



Winter Fuels Outlook: 2002-2003

Selected Table and Figure Updates Based on the February 2003 Short-Term Energy Outlook

Table WF1. Illustrative Consumer Prices and Expenditures for Heating Fuels During the Winter

	1999-2000 Actual	2000-2001 Actual	2001-2002 Actual	2002-2003 Base Forecast
Natural Gas (Midwest)				
Consumption (mcf)	81.7	99.1	81.3	90.6
Avg. Price (\$/mcf)	6.69	9.55	7.33	8.41
Expenditures (\$)	546	946	596	762
Heating Oil (Northeast)				
Consumption (gals)	644	731	584	733
Avg. Price (\$/gal)	1.16	1.37	1.10	1.33
Expenditures (\$)	751	999	643	975
Propane (Midwest)				
Consumption (gals)	807	979	803	896
Avg. Price (\$/gal)	1.02	1.37	1.10	1.23
Expenditures (\$)	824	1344	887	1101

Notes: Consumption based on typical per household use for regions noted.
 Prices shown are national average delivered-to-household prices.

Figure WF1. U.S. Winter Natural Gas Demand
 (Year-to-Year Percent Change)

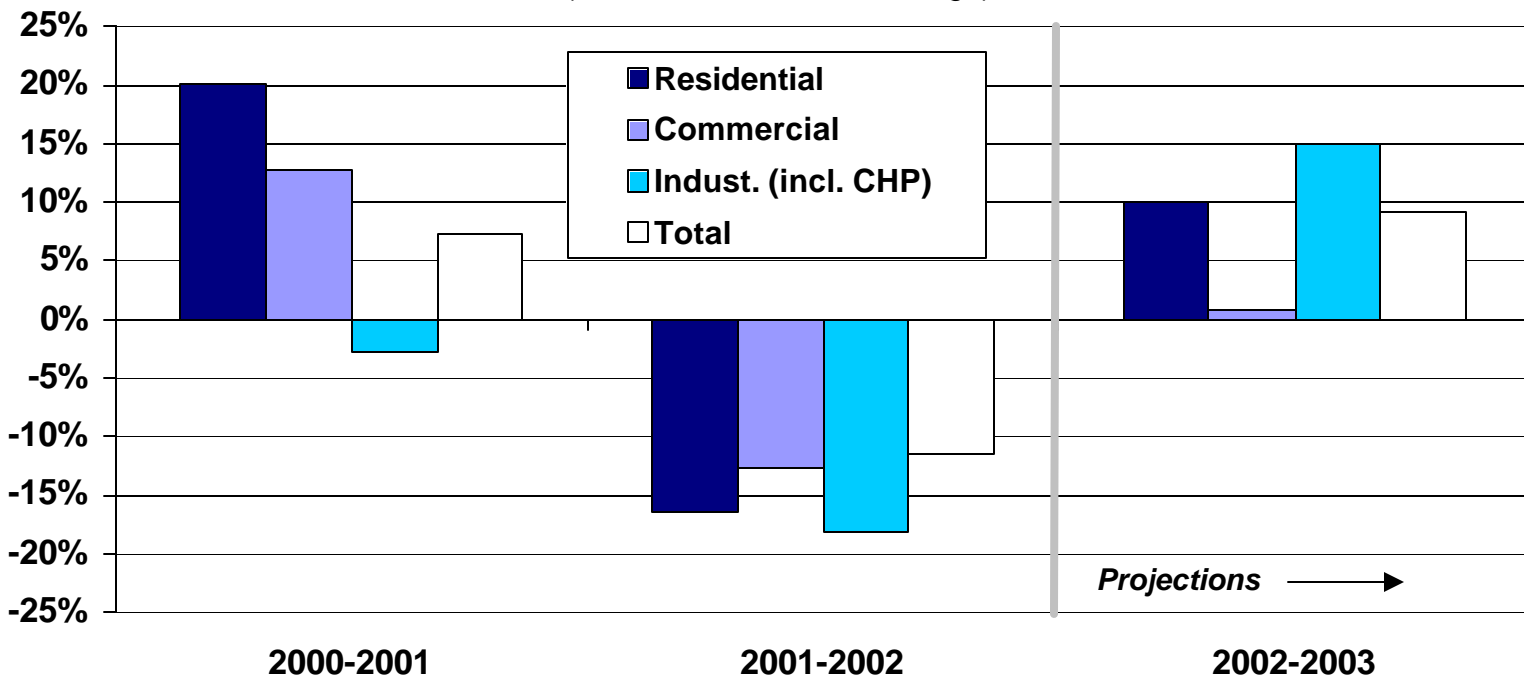


Figure WF3. Natural Gas Spot Wellhead Prices: Base Case and 95% Confidence Intervals

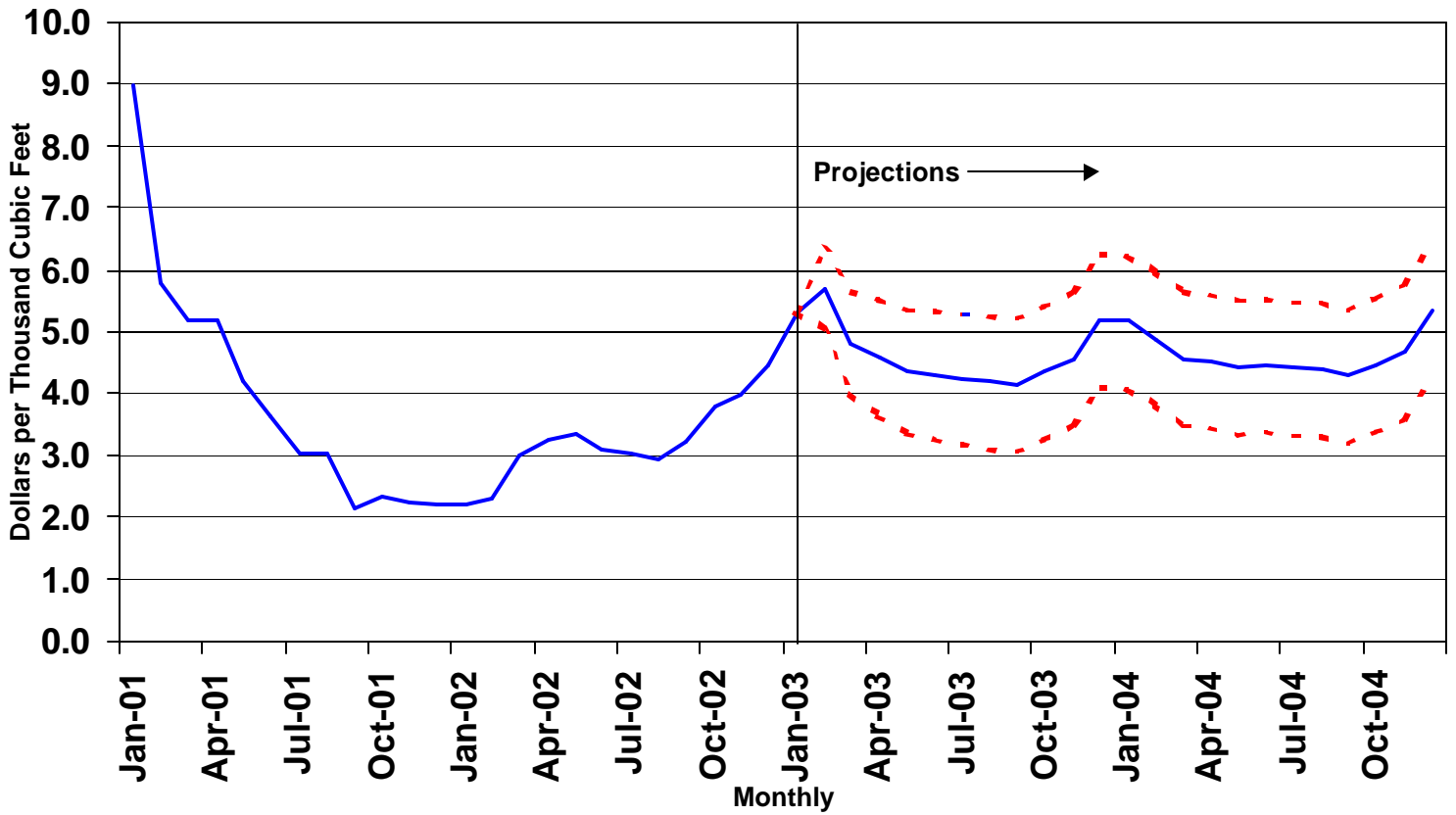
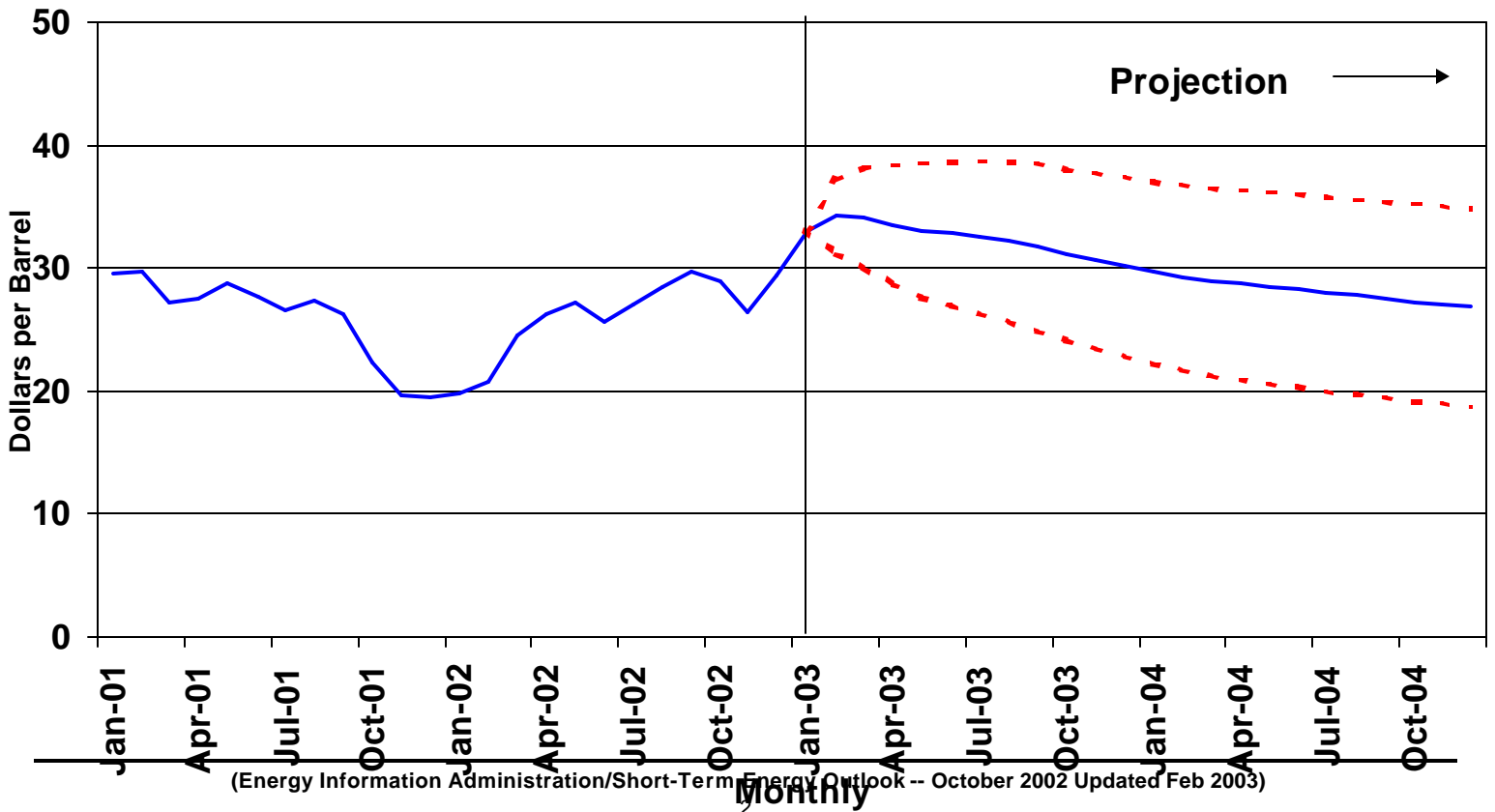


Figure WF5. WTI Crude Oil Price: Base Case and 95% Confidence Interval



(Energy Information Administration/Short-Term Energy Outlook -- October 2002 Updated Feb 2003)

Table WF3. 2002-2003 Winter Weather Scenarios: Warm, Normal (Base) and Cold Cases**(Illustrative Household Heating Demand and Costs)**

	Warm	Base	Cold	% Diff. From Warm	Base Cold
Natural Gas (Midwest)					
Consumption (mcf)	81.6	90.6	99.7	-10.0%	10.0%
Avg. Price (\$/mcf)	8.31	8.41	8.51	-1.2%	1.2%
Expenditures (\$)	678	762	849	-11.1%	11.3%
Heating Oil (Northeast)					
Consumption (gals)	659	733	806	-10.0%	10.0%
Avg. Price (\$/gal)	1.26	1.33	1.41	-5.6%	5.6%
Expenditures (\$)	828	975	1133	-15.0%	16.2%
Propane (Midwest)					
Consumption (gals)	806	896	985	-10.0%	10.0%
Avg. Price (\$/gal)	1.19	1.23	1.27	-3.6%	3.2%
Expenditures (\$)	955	1101	1250	-13.2%	13.5%

Note: Scenarios involve assumptions of 10% greater and 10% lower heating degree-days in all regions.