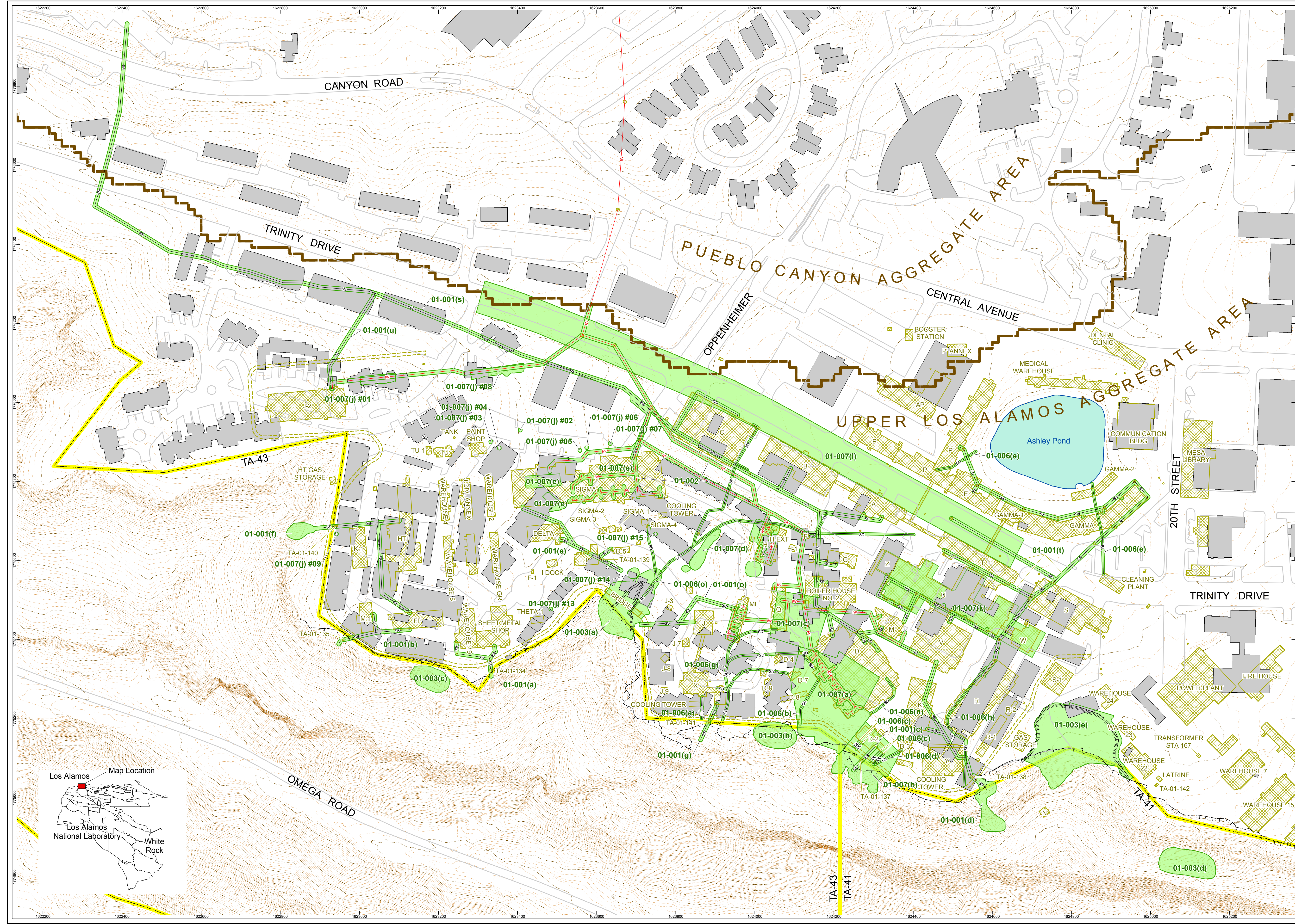


Plate 2. TA-01 site map

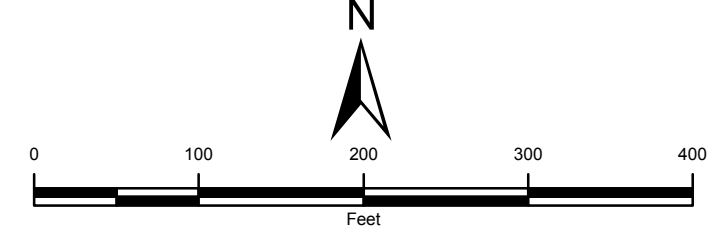


- SWMU/AOC
- Aggregate Area
- Contour (feet)
- Canyon rim (1990)
- Paved road
- Technical Area boundary
- Current structure
- Former building drain line
- Former industrial waste line
- Former sanitary sewer
- Former storm drain
- Canyon rim (circa 1963)
- Former patrol road
- Former structure (with id)

DATA SOURCES

ENVIRONMENTAL FEATURE DATA
 Former Location of the Canyon Rim, Townsite South Rim; ENV Environmental Remediation & Surveillance Program, Proposed feature class FRMRTA01_canyonrim_arc, PMR05046; 1:2,500 Scale Data; 21 June 2005.
 Former Acid Sewer (Industrial Waste) Features of Technical Area (TA) 01; ENV Environmental Remediation & Surveillance Program, Proposed feature class FRMRTA01_acidsewer_arc, PMR05046; 1:2,500 Scale Data; 20 September 2005.
 Former Building Drain Lines of Technical Area (TA) 01; ENV Environmental Remediation & Surveillance Program, Proposed feature class FRMRTA01_bldgdrainlines_arc, PMR05046; 1:2,500 Scale Data; 14 September 2005.
 Former Patrol Road, South Canyon Rim, Technical Area (TA) 01; ENV Environmental Remediation & Surveillance Program, Polygon Features, Not Controlled, ER_notcontrolled_poly_edition 2006-08; 1:2,500 Scale Data; 27 January 2006.
 Former Sanitary Sewer Features of Technical Area (TA) 01; ENV Environmental Remediation & Surveillance Program, Proposed feature class FRMRTA01_sanitarysewer_arc, PMR05046; 1:2,500 Scale Data; 20 September 2005.
 Former Storm Drain Features of Technical Area (TA) 01; ENV Environmental Remediation & Surveillance Program, Proposed feature class FRMRTA01_stormdrain_arc, PMR05046; 1:2,500 Scale Data; 19 September 2005.
 Former Structures of Technical Area (TA) 01; ENV Environmental Remediation & Surveillance Program, Proposed feature class FRMRTA01_structures_poly, PMR05046; 1:2,500 Scale Data; 21 June 2005.
 Location of the Canyon Rim, Townsite South Rim in 1991; ENV Environmental Remediation & Surveillance Program, Proposed feature class ER_TA01_canyonrim1991_arc, PMR05046; 1:2,500 Scale Data; 21 June 2005.
POTENTIAL RELEASE SITES
 Los Alamos National Laboratory, ENV Environmental Remediation and Surveillance Program, Draft Changes for GUID CC05007; 1:2,500 Scale Data; 21 June 2005.

INFRASTRUCTURE & CULTURAL FEATURE DATA
 Hypsography; 2, 10, 20 and 100 Foot Contour Intervals; Los Alamos National Laboratory, ENV Environmental Remediation and Surveillance Program; 1991.
 LANSI, Technical Areas; Los Alamos National Laboratory, KSL Site Support Services, Planning, Locating and Mapping Section; Development Edition of 05 January 2005.
 Paved Road Areas; Los Alamos National Laboratory, KSL Site Support Services, Planning, Locating and Mapping Section; Development Edition of 08 January 2005.
 Ponds; County of Los Alamos, Information Services; 07 September 2004.
 Structures; County of Los Alamos, Information Services; 08 September 2004.



1:1,400
 State Plane Coordinate System, New Mexico Central Zone, US Feet, NAD 83

LOS ALAMOS NATIONAL LABORATORY
 Los Alamos, New Mexico 87545
 22 February 2006

ENVIRONMENTAL REMEDIATION & SURVEILLANCE PROGRAM
 Map Number PMR05046ZS
 Created by Nicholas Planner
 ENV-ECR GIS Team

This map was created for work processes conducted by or for personnel of the Environmental Remediation and Surveillance Program. All other uses for this map are disclaimed.

Users are solely responsible to confirm data accuracy.
DISCLAIMER: Neither the United States Government nor the University of California nor any of their employees, makes any warranty, express or implied, including the warranties of merchantability and fitness for a particular purpose, or assumes any legal liability or responsibility for the accuracy, completeness, or usefulness of any information, apparatus, product, or process disclosed, or represents that its use would not infringe privately owned rights.

