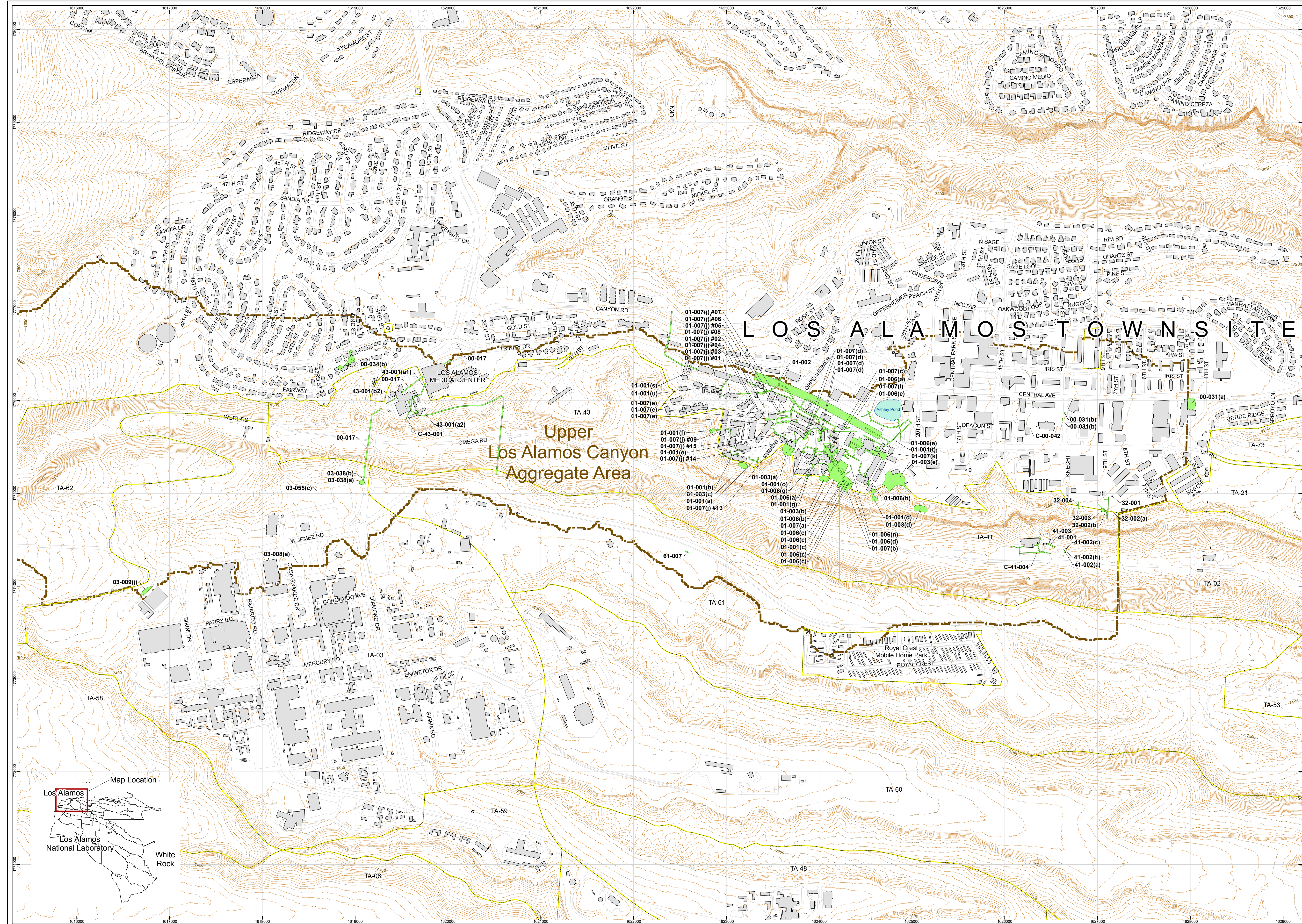


Plate 1. Upper Los Alamos Canyon Aggregate Area SWMUs and AOCs

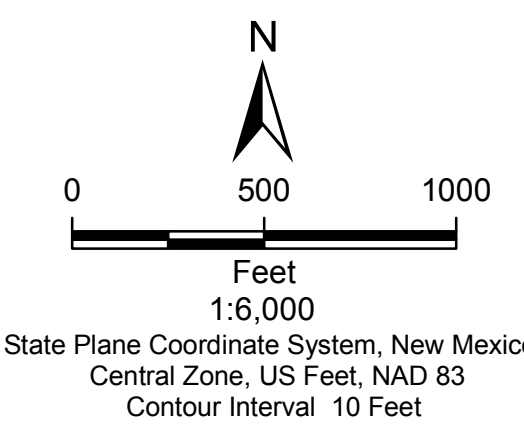


- SWMU/AOC
- Upper Los Alamos Canyon Aggregate Area
- Contour (feet)
- Paved road
- Technical area boundary
- Current structure

DATA SOURCES

ENVIRONMENTAL FEATURE DATA
 Aggregate Areas: Los Alamos National Laboratory, ENV Environmental Remediation & Surveillance Program, ER2005-0496; 1:2,500 Scale Date: 22 September 2005.
 Potential Release Sites: Los Alamos National Laboratory, ENV Environmental Remediation and Surveillance Program, ER2006-0114; 1:2,500 Scale Date: 09 February 2006; and, draft changes for change control; 1:2,500 Scale Date; in progress 23 February 2006.

INFRASTRUCTURE & CULTURAL FEATURE DATA
 Hypsography: 2, 10, 20 and 100 Foot Contour Intervals; Los Alamos National Laboratory, ENV Environmental Remediation and Surveillance Program; 1991.
 LANS: Technical Areas: Los Alamos National Laboratory, KSL Site Support Services, Planning, Locating and Mapping Section; Development Edition of 05 January 2005.
 Paved Road Area: Los Alamos National Laboratory, KSL Site Support Services, Planning, Locating and Mapping Section; Development Edition of 06 January 2005.
 Ponds: County of Los Alamos, Information Services; 07 September 2004.
 Structures: County of Los Alamos, Information Services; 08 September 2004.



LOS ALAMOS NATIONAL LABORATORY
 Los Alamos, New Mexico 87545
 29 March 2006

ENVIRONMENTAL REMEDIATION & SURVEILLANCE PROGRAM
 Map Number PMR05046YD
 Created by Nicholas Planner
 ENV-ECR GIS Team

This map was created for work processes conducted by or for personnel of the Environmental Remediation and Surveillance Program. All other uses for this map are disclaimed.

Users are solely responsible to confirm data accuracy.

DISCLAIMER: Neither the United States Government nor the University of California nor any of their employees, makes any warranty, express or implied, including the warranties of merchantability and fitness for a particular purpose, or assumes any legal liability or responsibility for the accuracy, completeness, or usefulness of any information, apparatus, product, or process disclosed, or represents that its use would not infringe privately owned rights.

