

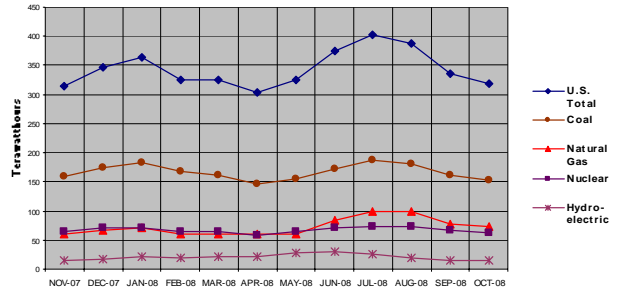
# Executive Summary

**Generation:** Net generation in the United States dropped by 4.2 percent from October 2007 to October 2008. This was the third consecutive month that net generation was down compared to the same calendar month in 2007. The Commerce Department reported that real gross domestic product decreased from the second quarter to the third quarter of 2008, and continuing this trend, total industrial production in October 2008 as reported by the Federal Reserve was 4.1 percent lower than it had been in October 2007. This was the fourth consecutive month that same-month industrial production in 2008 declined from 2007. Net generation declined even though data from the National Oceanic and Atmospheric Administration's (NOAA's) population-weighted Residential Energy Demand Temperature Index (REDTI) for October 2008 was 4.3 percent "above average consumption." October 2008 ranked as the forty-fourth coolest October on record; October 2007, in contrast, was the ninth warmest on record.

Most (69.4 percent) of the 12-month decline in October levels is attributable to the fall in coal-fired generation and 55.4 percent of the coal-fired decline can be attributed to lower coal-fired generation in five States – North Carolina, Georgia, West Virginia, Ohio, and Michigan. A decline in gas-fired generation accounted for 41.5 percent of the overall decline nationally, and two States – Texas and Florida – accounted for over half of the decline in national gas-fired generation. Nuclear generation in October 2008 was 1.8 percent higher than it was in October 2007. Net generation from conventional hydroelectric sources was 10.9 percent higher than it had been in October 2007. The largest hydroelectric generation increase was seen in Arkansas, as easing drought conditions contributed to generation that was 160.7 percent higher than it was in October 2007. The October 2008 wind-powered generation total was 36.2 percent higher than it was in October 2007. Increases due to new wind farms in Texas, Colorado, and Minnesota account for 76.4 percent of the national increase. Petroleum liquid-fired generation was 47.6 percent lower compared to a year ago, with its overall share of net generation still quite

small compared to coal, nuclear, natural gas-fired, and hydroelectric sources.

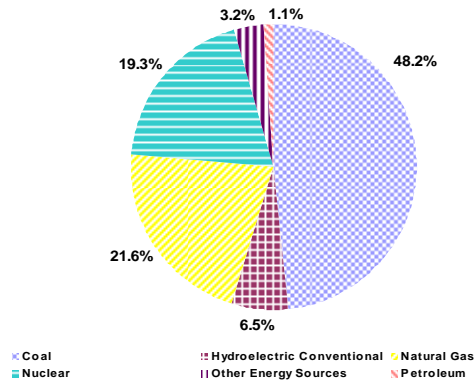
**Figure 1: Net Generation by Major Energy Source: Total (All Sectors), November 2007 through October 2008**



Year-to-date, net generation was down 1.1 percent from 2007 levels. Net generation attributable to coal-fired plants was down 1.0 percent. Nuclear generation was down slightly. Generation from petroleum liquids was down 41.9 percent, while natural gas-fired generation was down 2.6 percent. The October increase in conventional hydroelectric generation contributed to a year-to-date total that was up 5.6 percent. Even though wind generation totals were down in September, the rise in October wind generation contributed to a year-to-date wind generation total that was up 38.4 percent.

Coal-fired plants contributed 48.2 percent of the Nation's electric power, year-to-date. Nuclear plants contributed 19.3 percent, while 21.6 percent was generated at natural gas-fired plants. Of the 1.1 percent generated by petroleum-fired plants, petroleum liquids represented 0.8 percent, with the remainder from petroleum coke. Conventional hydroelectric power provided 6.5 percent of the total, while other renewables (primarily biomass, but also geothermal, solar, and wind) and other miscellaneous energy sources generated the remaining 3.4 percent of electric power (Figure 2).

**Figure 2: Net Generation Shares by Energy Source: Total (All Sectors), Year-to-Date through October, 2008**



**Consumption of Fuels:** Consumption of coal for power generation in October 2008 was down by 4.5 percent compared to October 2007. For the same time period, consumption of petroleum liquids and petroleum coke decreased by 47.7 percent and 0.6 percent, respectively, while the consumption of natural gas decreased by 13.7 percent.

Year-to-date, consumption of coal fell by 0.5 percent. Natural gas consumption decreased by 7.5 percent, while the consumption of petroleum liquids and petroleum coke fell by 42.5 percent and 14.9 percent, respectively.

### Fuel Stocks, Electric Power Sector, October 2008

Total electric power sector coal stocks increased between October 2007 and October 2008 by 6.4 million tons. Stocks of bituminous coal (including coal synfuel) decreased by 10.1 percent, or 7.1 million tons between October 2007 and October 2008 (from 70.0 to 62.9 million tons). Subbituminous coal stocks grew by 13.5 million tons between October 2007 and October 2008 (from 76.5 to 90.0 million tons).

Electric power sector liquid petroleum stocks totaled 40.1 million barrels at the end of October 2008, a decrease of 5.1 percent (2.2 million barrels) from October 2007. October 2008 stocks were 0.9 percent (0.4 million barrels) higher than at the end of September 2008.

### Fuel Receipts and Costs, All Sectors, October 2008

In October 2008, the price of coal to electricity generators maintained the August and September level, thereby breaking the recent upward trend. The downward trend in the prices of petroleum liquids and natural gas continued in October. Receipts of coal increased while receipts of petroleum liquids and natural gas declined from their September 2008 level and from their October 2007 level.

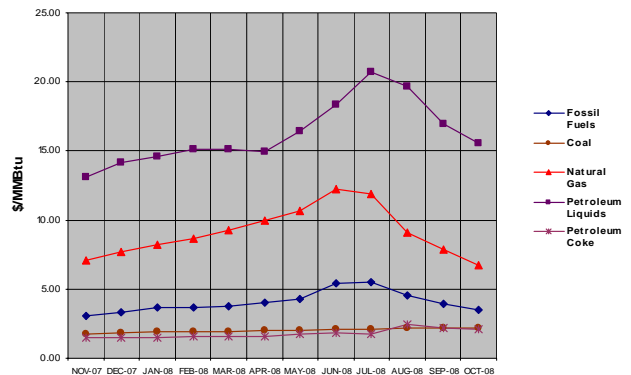
The average price paid for petroleum liquids decreased from \$16.98 per MMBtu in September 2008 to \$15.55 in October. This was an 8.4-percent decrease from September 2008 and a 28.8-percent increase from October 2007. Receipts of petroleum liquids in October 2008 were 3.7 million barrels, a 12.2-percent decrease from September 2008 and a 4.4-percent decrease from October 2007.

The average price paid for natural gas by electricity generators in October was \$6.76 per MMBtu, a 14.1-percent decrease from the September 2008 level of \$7.87. The October price was 0.9 percent lower than the October 2007 price of \$6.82 per MMBtu. Receipts of natural gas were 621.2 million Mcf, down 7.6 percent from September 2008 and down 3.9 percent from October 2007.

The average price paid for coal in October 2008 was \$2.18 per MMBtu, which was the same price paid in August and again in September. It was 22.5 percent higher when compared with the October 2007 price of \$1.78 per MMBtu. Receipts of coal were 92.7 million tons, up 4.0 percent when compared with September 2008 data and down 0.2 percent from October 2007. The overall price for fossil fuels was \$3.46 per MMBtu in October 2008, an 11.5-percent decrease from September 2008, and 8.8 percent higher than in October 2007.

Year-to-date (January through October) 2008 prices compared to the same period last year were up 35.9 percent for natural gas, 85.2 percent for petroleum liquids, and 15.8 percent for coal. Year-to-date 2008 receipts compared to the same period last year were up 3.4 percent for natural gas. Year-to-date receipts for petroleum liquids and coal were down 26.5 percent and 1.9 percent, respectively.

**Figure 3: Electric Power Industry Fuel Costs, November 2007 through October 2008**



### Sales, Revenue, and Average Retail Price, October 2008

The average retail price of electricity for October 2008 was 10.02 cents per kilowatt-hour (kWh), 2.8 percent lower than September 2008 when the average retail price of electricity was 10.31 cents per kWh, and 9.2 percent higher than October 2007, when the price was 9.18 cents per kWh.

The typical decrease in electricity demand due to more moderate temperatures at summer's end continuing into October led to lower prices than in September 2008 which was lower than August 2008. Retail sales between October 2007 and October 2008 decreased 4.5 percent due to the slowing economy and comparably less cooling demand than October 2007. The average price of residential electricity for October 2008 increased 1.05 cents to 11.86 cents per kWh from October 2007 and down slightly from 11.94 cents per kWh in September 2008 and down from 12.10 cents per kWh in August 2008 when cooling demand was higher. At 11.86 cents per kWh, the average residential price of electricity increased by 9.7 percent from October 2007. These increases in the retail electricity prices are influenced by the increases in fossil fuel prices for the same period.

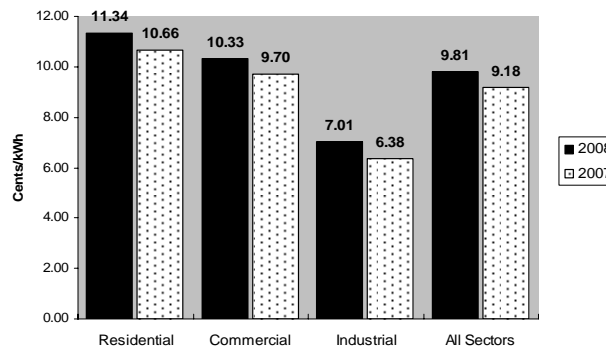
**Sales:** For October 2008, sales in the residential and industrial sectors decreased by 6.9 and 4.9 percent, respectively, while sales in the commercial sector decreased by 1.9 percent as compared to October 2007. For the month, total retail sales were 293.1 billion kWh, a decrease of 32.3 billion kWh from September 2008, and a decrease of 4.5 percent or 13.7 billion kWh from October 2007. Year-to-date 2008, sales were 3,165 billion kWh, corresponding to a 0.2 percent increase over the same period in 2007.

**Revenue:** Total retail revenues in October 2008 were \$29.4 billion, reflecting an increase in revenue of 4.3 percent from October 2007 and yet a \$4.2 billion decrease from September 2008 reflecting continued higher prices of fossil fuels and slowing demand, respectively. Simply stated, the revenue increase year over year was related to higher fuel costs while seasonality and a slowing economy influenced demand from month to month, August to October. For October 2008, residential sector retail revenues increased 2.2 percent from October 2007, while the commercial and industrial sector retail revenues increased by 5.2 and 6.8

percent, respectively, reflecting the changes in weather. They also affect the residential consumer while yet higher fossil fuel prices affect commercial and industrial users more than weather. Year-to-date 2008, retail revenue increased to \$310.6 billion, a 7.2-percent increase over the same period in 2007.

**Average Retail Price:** For the month, average residential retail prices slipped slightly to 11.86 cents per kWh from 11.94 cents per kWh in September 2008 although 9.7 percent higher than October 2007 when the price was 10.81 cents per kWh. The October 2008 average commercial retail price was 10.49 cents per kWh, a 7.2 percent increase from October 2007 and down slightly from 10.77 cents per kWh in September 2008. The average industrial retail price for October 2008 rose to 7.24 cents per kWh, a 12.4-percent increase over October 2007 and down slightly from 7.36 cents per kWh in September 2008. Year-to-date October 2008 residential prices have increased by 6.4 percent when compared to the same period last year and the year-to-date average retail prices for all sectors increased to 9.81 cents per kWh, or 6.9 percent over the same period. (Figure 4).

**Figure 4: Average Retail Price of Electricity to Ultimate Customers by End-Use Sector, Year-to-Date through October 2008 and 2007**



**Table ES1.A. Total Electric Power Industry Summary Statistics, 2008 and 2007**

October											
Net Generation and Consumption of Fuels											
Items	Total (All Sectors)			Electric Power Sector				Commercial		Industrial	
				Electric Utilities		Independent Power Producers					
	Oct 2008	Oct 2007	% Change	Oct 2008	Oct 2007	Oct 2008	Oct 2007	Oct 2008	Oct 2007	Oct 2008	Oct 2007
<b>Net Generation (thousand megawatthours)</b>											
Coal <sup>1</sup> .....	152,925	162,642	-6.0	110,694	120,142	40,715	40,971	105	106	1,411	1,423
Petroleum Liquids <sup>2</sup> .....	1,859	3,551	-47.6	1,427	2,813	335	589	6	9	91	139
Petroleum Coke.....	1,305	1,163	12.2	592	514	593	509	1	1	118	139
Natural Gas <sup>3</sup> .....	72,515	78,321	-7.4	26,657	28,375	39,302	43,027	349	392	6,207	6,526
Other Gases <sup>4</sup> .....	771	1,164	-33.8	*	9	215	292	--	1	556	861
Nuclear.....	62,793	61,690	1.8	32,630	32,752	30,163	28,938	--	--	--	--
Hydroelectric Conventional.....	16,436	14,826	10.9	15,102	13,548	1,252	1,159	2	3	79	117
Other Renewables.....	9,754	8,867	10.0	761	748	6,590	5,538	116	142	2,288	2,439
Wood <sup>5</sup> .....	3,001	3,223	-6.9	118	180	639	657	2	2	2,242	2,384
Waste <sup>6</sup> .....	1,291	1,261	2.4	92	89	1,039	976	114	140	46	56
Geothermal.....	1,242	1,278	-2.9	100	100	1,142	1,179	--	--	--	--
Solar/PV <sup>7</sup> .....	56	48	16.7	1	1	55	47	--	--	--	--
Wind.....	4,164	3,056	36.2	449	378	3,715	2,678	--	--	--	--
Hydroelectric Pumped Storage.....	-497	-786	36.8	-399	-487	-97	-299	--	--	--	--
Other Energy Sources <sup>8</sup> .....	751	1,171	-35.9	39	57	497	544	55	70	160	501
<b>All Energy Sources.....</b>	<b>318,613</b>	<b>332,609</b>	<b>-4.2</b>	<b>187,502</b>	<b>198,471</b>	<b>119,565</b>	<b>121,269</b>	<b>635</b>	<b>724</b>	<b>10,911</b>	<b>12,145</b>
<b>Consumption of Fossil Fuels for Electricity Generation</b>											
Coal (1000 tons) <sup>1</sup> .....	80,843	84,679	-4.5	57,572	61,109	22,520	22,801	29	64	721	705
Petroleum Liquids (1000 bbls) <sup>2</sup> .....	3,231	6,176	-47.7	2,509	4,788	602	1,087	9	17	112	284
Petroleum Coke (1000 tons).....	464	467	-6	196	199	236	216	*	1	32	51
Natural Gas (1000 Mcf) <sup>3</sup> .....	572,761	663,528	-13.7	226,582	252,009	294,227	343,477	2,885	4,294	49,066	63,749
<b>Consumption of Fossil Fuels for Useful Thermal Output</b>											
Coal (1000 tons) <sup>1</sup> .....	1,796	1,394	28.9	--	--	382	106	135	82	1,280	1,205
Petroleum Liquids (1000 bbls) <sup>2</sup> .....	418	614	-31.9	--	--	18	4	14	11	386	599
Petroleum Coke (1000 tons).....	96	90	6.7	--	--	13	*	1	1	81	89
Natural Gas (1000 Mcf) <sup>3</sup> .....	62,912	55,520	13.3	--	--	24,398	9,228	2,133	3,346	36,381	42,947
<b>Consumption of Fossil Fuels for Electricity Generation and Useful Thermal Output</b>											
Coal (1000 tons) <sup>1</sup> .....	82,639	86,073	-4.0	57,572	61,109	22,902	22,907	164	146	2,000	1,910
Petroleum Liquids (1000 bbls) <sup>2</sup> .....	3,649	6,789	-46.3	2,509	4,788	619	1,091	23	28	497	882
Petroleum Coke (1000 tons).....	560	557	.6	196	199	249	216	2	2	113	140
Natural Gas (1000 Mcf) <sup>3</sup> .....	635,673	719,049	-11.6	226,582	252,009	318,625	352,705	5,018	7,639	85,447	106,695
<b>Fuel Stocks (end-of-month)</b>											
Coal (1000 tons) <sup>9</sup> .....	160,242	153,814	4.2	124,552	120,182	33,000	30,959	324	405	2,365	2,267
Petroleum Liquids (1000 bbls) <sup>2</sup> .....	44,252	43,712	1.2	26,187	26,062	13,894	16,192	374	229	3,797	1,229
Petroleum Coke (1000 tons).....	1,101	655	68.0	434	261	326	284	*	*	341	109

**Retail Sales, Retail Revenue and Average Retail Price per Kilowatthour**

Items	Total U.S. Electric Power Industry								
	Retail Sales (Million kWh) <sup>10</sup>			Retail Revenue (Million Dollars)			Average Retail Price (Cents/kWh)		
	Oct 2008	Oct 2007	% Change	Oct 2008	Oct 2007	% Change	Oct 2008	Oct 2007	% Change
Residential.....	96,607	103,770	-6.9	11,458	11,214	2.2	11.86	10.81	9.7
Commercial <sup>11</sup> .....	112,892	115,095	-1.9	11,845	11,263	5.2	10.49	9.79	7.2
Industrial <sup>11</sup> .....	83,007	87,330	-4.9	6,010	5,628	6.8	7.24	6.44	12.4
Transportation <sup>11</sup> .....	628	617	1.9	69	64	6.3	10.91	10.46	4.3
All Sectors.....	293,134	306,812	-4.5	29,381	28,169	4.3	10.02	9.18	9.2

<sup>1</sup> Anthracite, bituminous, subbituminous, lignite, waste coal, and coal synfuel.

<sup>2</sup> Distillate fuel oil, residual fuel oil, jet fuel, and kerosene.

<sup>3</sup> Natural gas includes a small amount of supplemental gaseous fuels that cannot be identified separately.

<sup>4</sup> Blast furnace gas, propane gas, and other manufactured and waste gases derived from fossil fuels.

<sup>5</sup> Wood, black liquor, and other wood waste.

<sup>6</sup> Biogenic municipal solid waste, landfill gas, sludge waste, agriculture byproducts, and other biomass.

<sup>7</sup> Solar thermal and photovoltaic energy.

<sup>8</sup> Non-biogenic municipal solid waste, batteries, chemicals, hydrogen, pitch, purchased steam, sulfur, tire-derived fuel, and miscellaneous technologies.

<sup>9</sup> Anthracite, bituminous, subbituminous, coal synfuel, and lignite; excludes waste coal.

<sup>10</sup> Retail sales and net generation may not correspond exactly for a particular month for a variety of reasons (e.g., sales data may include imported electricity). Net generation is for the calendar month while retail sales and associated revenue accumulate from bills collected for periods of time (28 to 35 days) that vary dependent upon customer class and consumption occurring in and outside the calendar month.

<sup>11</sup> See Technical notes for additional information on the Commercial, Industrial, and Transportation sectors.

\* = Value is less than half of the smallest unit of measure (e.g., for values with no decimals, the smallest unit is "1" then values under 0.5 are shown as "\*\*").

Notes: • Beginning with the collection of Form EIA-923 in January 2008, the methodology to allocate total fuel consumption for electricity generation and consumption for useful thermal output was changed. See the technical notes (Appendix C) for further information. • Beginning with 2001 data, non-biogenic municipal solid waste and tire-derived fuels are reclassified as non-renewable energy sources and included in "Other". Biogenic municipal solid waste is included in "Other Renewables." • Values for 2007 and 2008 are preliminary and are estimates based on samples. - See Technical Notes for a discussion of the sample designs. • Totals may not equal sum of components because of independent rounding. • Percent difference is calculated before rounding. • Monetary values are expressed in nominal terms.

Sources: Energy Information Administration, Form EIA-826, "Monthly Electric Sales and Revenue With State Distributions Report;" Form EIA-906, "Power Plant Report;" Form EIA-920, "Combined Heat and Power Plant Report;" Beginning with 2008 data, the Form EIA-923, "Power Plant Operations Report," replaced the following: Form EIA-906, "Power Plant Report;" Form EIA-920, "Combined Heat and Power Plant Report;" Form EIA-423, "Monthly Cost and Quality of Fuels for Electric Plants Report;" and Federal Energy Regulatory Commission, FERC Form 423, "Monthly Report of Cost and Quality of Fuels for Electric Plants."

**Table ES1.B. Total Electric Power Industry Summary Statistics, Year-to-Date 2008 and 2007**

January through October											
Net Generation and Consumption of Fuels											
Items	Total (All Sectors)			Electric Power Sector				Commercial		Industrial	
				Electric Utilities		Independent Power Producers					
	2008	2007	% Change	2008	2007	2008	2007	2008	2007	2008	2007
<b>Net Generation (thousand megawatthours)</b>											
Coal <sup>1</sup> .....	1,669,136	1,686,356	-1.0	1,232,164	1,245,564	421,069	425,258	1,304	1,060	14,599	14,474
Petroleum Liquids <sup>2</sup> .....	26,293	45,222	-41.9	18,497	30,594	6,506	12,487	82	164	1,208	1,977
Petroleum Coke.....	11,525	13,294	-13.3	4,903	6,156	5,552	5,683	4	7	1,067	1,448
Natural Gas <sup>3</sup> .....	746,765	766,356	-2.6	268,447	268,711	412,918	431,733	3,612	3,793	61,788	62,120
Other Gases <sup>4</sup> .....	12,567	13,086	-4.0	19	62	4,081	3,189	--	17	8,467	9,818
Nuclear.....	669,283	669,536	.0	353,543	368,950	315,740	300,586	--	--	--	--
Hydroelectric Conventional.....	226,138	214,087	5.6	205,736	195,108	18,589	16,919	64	61	1,750	1,999
Other Renewables.....	95,192	85,433	11.4	7,559	7,106	62,827	53,103	1,378	1,364	23,429	23,861
Wood <sup>5</sup> .....	31,603	31,952	-1.1	1,533	1,686	7,223	6,920	16	16	22,832	23,330
Waste <sup>6</sup> .....	13,816	13,984	-1.2	934	983	10,922	11,122	1,363	1,348	597	531
Geothermal.....	12,209	12,339	-1.1	989	940	11,220	11,399	--	--	--	--
Solar/PV <sup>7</sup> .....	772	580	33.1	13	10	759	570	--	--	--	--
Wind.....	36,792	26,579	38.4	4,089	3,487	32,702	23,092	--	--	--	--
Hydroelectric Pumped Storage.....	-5,164	-5,708	9.5	-4,220	-4,386	-945	-1,322	--	--	--	--
Other Energy Sources <sup>8</sup> .....	9,027	11,559	-21.9	490	565	5,493	5,374	625	644	2,418	4,975
<b>All Energy Sources.....</b>	<b>3,460,762</b>	<b>3,499,222</b>	<b>-1.1</b>	<b>2,087,138</b>	<b>2,118,430</b>	<b>1,251,829</b>	<b>1,253,030</b>	<b>7,069</b>	<b>7,112</b>	<b>114,725</b>	<b>120,671</b>
<b>Consumption of Fossil Fuels for Electricity Generation</b>											
Coal (1000 tons) <sup>1</sup> .....	874,419	878,613	-.5	636,781	638,806	230,587	232,844	400	615	6,651	6,348
Petroleum Liquids (1000 bbls) <sup>2</sup> .....	45,176	78,576	-42.5	32,311	52,649	11,001	21,835	136	325	1,728	3,766
Petroleum Coke (1000 tons).....	4,462	5,240	-14.9	1,941	2,342	2,238	2,369	1	4	282	526
Natural Gas (1000 Mcf) <sup>3</sup> .....	5,968,830	6,453,590	-7.5	2,329,869	2,365,619	3,133,484	3,437,149	31,032	41,627	474,444	609,194
<b>Consumption of Fossil Fuels for Useful Thermal Output</b>											
Coal (1000 tons) <sup>1</sup> .....	18,033	15,014	20.1	--	--	3,617	1,195	1,385	956	13,030	12,863
Petroleum Liquids (1000 bbls) <sup>2</sup> .....	5,522	8,845	-37.6	--	--	622	159	199	301	4,701	8,384
Petroleum Coke (1000 tons).....	918	874	5.1	--	--	106	3	6	6	807	865
Natural Gas (1000 Mcf) <sup>3</sup> .....	650,576	556,155	17.0	--	--	254,152	128,930	21,144	28,725	375,280	398,500
<b>Consumption of Fossil Fuels for Electricity Generation and Useful Thermal Output</b>											
Coal (1000 tons) <sup>1</sup> .....	892,451	893,627	-1	636,781	638,806	234,204	234,039	1,786	1,571	19,681	19,211
Petroleum Liquids (1000 bbls) <sup>2</sup> .....	50,699	87,421	-42.0	32,311	52,649	11,624	21,994	335	627	6,429	12,151
Petroleum Coke (1000 tons).....	5,380	6,114	-12.0	1,941	2,342	2,343	2,372	7	9	1,088	1,391
Natural Gas (1000 Mcf) <sup>3</sup> .....	6,619,406	7,009,744	-5.6	2,329,869	2,365,619	3,387,636	3,566,079	52,177	70,352	849,724	1,007,694

**Retail Sales, Retail Revenue and Average Retail Price per Kilowatthour**

Items	Total U.S. Electric Power Industry								
	Retail Sales (Million kWh) <sup>9</sup>			Retail Revenue (Million Dollars)			Average Retail Price (Cents/kWh)		
	2008	2007	% Change	2008	2007	% Change	2008	2007	% Change
Residential.....	1,165,658	1,178,652	-1.1	132,129	125,670	5.1	11.34	10.66	6.4
Commercial <sup>10</sup> .....	1,144,620	1,131,697	1.1	118,252	109,714	7.8	10.33	9.70	6.5
Industrial <sup>10</sup> .....	848,492	840,621	.9	59,487	53,667	10.8	7.01	6.38	9.9
Transportation <sup>10</sup> .....	6,362	6,481	-1.8	727	682	6.6	11.43	10.53	8.5
All Sectors.....	3,165,132	3,157,451	.2	310,594	289,734	7.2	9.81	9.18	6.9

<sup>1</sup> Anthracite, bituminous, subbituminous, lignite, waste coal, and coal synfuel.

<sup>2</sup> Distillate fuel oil, residual fuel oil, jet fuel, kerosene, and waste oil.

<sup>3</sup> Natural gas includes a small amount of supplemental gaseous fuels that cannot be identified separately.

<sup>4</sup> Blast furnace gas, propane gas, and other manufactured and waste gases derived from fossil fuels.

<sup>5</sup> Wood, black liquor, and other wood waste.

<sup>6</sup> Biogenic municipal solid waste, landfill gas, sludge waste, agriculture byproducts, and other biomass.

<sup>7</sup> Solar thermal and photovoltaic energy.

<sup>8</sup> Non-biogenic municipal solid waste, batteries, chemicals, hydrogen, pitch, purchased steam, sulfur, tire-derived fuel, and miscellaneous technologies.

<sup>9</sup> Retail sales and net generation may not correspond exactly for a particular month for a variety of reasons (e.g., sales data may include imported electricity). Net generation is for the calendar month while retail sales and associated revenue accumulate from bills collected for periods of time (28 to 35 days) that vary dependent upon customer class and consumption occurring in and outside the calendar month.

<sup>10</sup> See Technical notes for additional information on the Commercial, Industrial, and Transportation sectors.

Notes: • Beginning with the collection of Form EIA-923 in January 2008, the methodology to allocate total fuel consumption for electricity generation and consumption for useful thermal output was changed. See the technical notes (Appendix C) for further information. • Beginning with 2001 data, non-biogenic municipal solid waste and tire-derived fuels are reclassified as non-renewable energy sources and included in "Other". Biogenic municipal solid waste is included in "Other Renewables." • Values for 2007 and 2008 are preliminary. Values for January through July 2007 are revised. Values from Forms EIA-826, EIA-906, and EIA-920 for 2007 and values from Form EIA-923 for 2008 are estimates based on samples - see Technical Notes for a discussion of the sample designs. • Totals may not equal sum of components because of independent rounding. • Percent difference is calculated before rounding.

Sources: Energy Information Administration, Form EIA-826, "Monthly Electric Sales and Revenue With State Distributions Report;" Form EIA-906, "Power Plant Report;" Form EIA-920, "Combined Heat and Power Plant Report;" Beginning with 2008 data, the Form EIA-923, "Power Plant Operations Report," replaced the following: Form EIA-906, "Power Plant Report;" Form EIA-920, "Combined Heat and Power Plant Report;" Form EIA-423, "Monthly Cost and Quality of Fuels for Electric Plants Report;" and Federal Energy Regulatory Commission, FERC Form 423, "Monthly Report of Cost and Quality of Fuels for Electric Plants."

**Table ES2.A. Summary Statistics: Receipts and Cost of Fossil Fuels for the Electric Power Industry by Sector, Physical Units, 2008 and 2007**

October										
Total (All Sectors)										
Items	Receipts (physical units)		Cost (dollars/ physical unit)		Number of Plants <sup>1</sup>		Year-to-Date			
							Receipts (physical units)		Cost (dollars/ physical unit)	
	Oct 2008	Oct 2007	Oct 2008	Oct 2007	Oct 2008	Oct 2007	Oct 2008	Oct 2007	Oct 2008	Oct 2007
Coal (1000 tons) <sup>2</sup> .....	92,650	92,817	43.45	35.56	485	483	879,832	896,888	40.77	35.62
Petroleum Liquids (1000 barrels) <sup>3</sup>	3,733	3,904	95.99	74.59	430	358	45,611	62,019	105.03	57.25
Petroleum Coke (1000 tons) .....	510	456	61.13	40.72	24	26	4,749	4,873	52.06	44.05
Natural Gas (1000 Mcf) <sup>4</sup> .....	621,196	646,442	6.94	7.00	1,055	884	6,462,772	6,253,104	9.83	7.25
Electric Utilities										
Items	Receipts (physical units)		Cost (dollars/ physical unit)		Number of Plants		Year-to-Date			
							Receipts (physical units)		Cost (dollars/ physical unit)	
	Oct 2008	Oct 2007	Oct 2008	Oct 2007	Oct 2008	Oct 2007	Oct 2008	Oct 2007	Oct 2008	Oct 2007
Coal (1000 tons) <sup>2</sup> .....	66,702	67,728	44.18	36.13	303	311	633,492	659,180	41.12	36.09
Petroleum Liquids (1000 barrels) <sup>3</sup>	2,142	2,256	103.80	68.27	231	221	31,326	39,721	104.31	55.77
Petroleum Coke (1000 tons) .....	285	165	63.37	48.38	9	12	2,349	2,138	58.59	50.90
Natural Gas (1000 Mcf) <sup>4</sup> .....	227,081	233,753	7.12	7.26	492	323	2,315,497	2,107,451	9.79	7.61
Independent Power Producers										
Items	Receipts (physical units)		Cost (dollars/ physical unit)		Number of Plants		Year-to-Date			
							Receipts (physical units)		Cost (dollars/ physical unit)	
	Oct 2008	Oct 2007	Oct 2008	Oct 2007	Oct 2008	Oct 2007	Oct 2008	Oct 2007	Oct 2008	Oct 2007
Coal (1000 tons) <sup>2</sup> .....	24,703	23,954	40.36	33.29	141	133	233,913	225,491	38.91	33.47
Petroleum Liquids (1000 barrels) <sup>3</sup>	1,320	1,316	87.67	87.95	157	108	10,571	17,652	111.20	62.62
Petroleum Coke (1000 tons) .....	161	248	42.35	32.15	12	9	1,856	2,167	35.63	34.54
Natural Gas (1000 Mcf) <sup>4</sup> .....	314,573	338,833	6.62	6.89	438	449	3,348,615	3,413,616	9.86	7.04
Commercial Sector										
Items	Receipts (physical units)		Cost (dollars/ physical unit)		Number of Plants		Year-to-Date			
							Receipts (physical units)		Cost (dollars/ physical unit)	
	Oct 2008	Oct 2007	Oct 2008	Oct 2007	Oct 2008	Oct 2007	Oct 2008	Oct 2007	Oct 2008	Oct 2007
Coal (1000 tons) <sup>2</sup> .....	36	41	84.43	64.71	3	3	408	455	72.97	62.87
Petroleum Liquids (1000 barrels) <sup>3</sup>	8	*	96.14	96.01	5	2	36	41	113.64	80.09
Petroleum Coke (1000 tons) .....	--	--	--	--	--	--	--	--	--	--
Natural Gas (1000 Mcf) <sup>4</sup> .....	1,854	1,730	8.84	7.51	8	8	17,906	17,966	10.13	8.14
Industrial Sector										
Items	Receipts (physical units)		Cost (dollars/ physical unit)		Number of Plants		Year-to-Date			
							Receipts (physical units)		Cost (dollars/ physical unit)	
	Oct 2008	Oct 2007	Oct 2008	Oct 2007	Oct 2008	Oct 2007	Oct 2008	Oct 2007	Oct 2008	Oct 2007
Coal (1000 tons) <sup>2</sup> .....	1,209	1,095	65.22	48.64	38	39	12,019	11,762	57.53	49.59
Petroleum Liquids (1000 barrels) <sup>3</sup>	263	332	74.23	64.53	37	30	3,679	4,605	93.31	49.23
Petroleum Coke (1000 tons) .....	63	44	99.09	60.27	3	5	544	568	79.98	54.54
Natural Gas (1000 Mcf) <sup>4</sup> .....	77,688	72,126	7.71	6.65	117	107	780,754	714,071	9.83	7.13

<sup>1</sup> Represents the number of plants for which receipts data were collected for this month. A plant using more than one fuel may be counted multiple times. The total numbers of electric power plants using coal, petroleum liquids, petroleum coke, and natural gas in the country as of January 1, 2007 are: 620; 1,542; 46; and 1,838 respectively.

<sup>2</sup> Anthracite, bituminous, subbituminous, lignite, waste coal, and coal synfuel.

<sup>3</sup> Distillate fuel oil, residual fuel oil, jet fuel, kerosene, and waste oil.

<sup>4</sup> Natural gas includes a small amount of supplemental gaseous fuels that cannot be identified separately.

\* = Value is less than half of the smallest unit of measure (e.g., for values with no decimals, the smallest unit is "1" then values under 0.5 are shown as "\*\*").

Notes: • Due to different reporting requirements between the Form EIA-923 and historical FERC Form 423, the receipts data from 2008 and on are not directly comparable to prior years. For more information, please see the Technical Notes in Appendix C. • Values for 2007 and 2008 are preliminary. Values for January through July 2007 are revised. • Mcf = thousand cubic feet.

Sources: Energy Information Administration, Form EIA-423, "Monthly Cost and Quality of Fuels for Electric Plants Report;" Federal Energy Regulatory Commission, FERC Form 423, "Monthly Report of Cost and Quality of Fuels for Electric Plants;" Beginning with 2008 data, the Form EIA-923, "Power Plant Operations Report," replaced the following: Form EIA-906, "Power Plant Report;" Form EIA-920, "Combined Heat and Power Plant Report;" Form EIA-423, "Monthly Cost and Quality of Fuels for Electric Plants Report;" and Federal Energy Regulatory Commission, FERC Form 423, "Monthly Report of Cost and Quality of Fuels for Electric Plants."

**Table ES2.B. Summary Statistics: Receipts and Cost of Fossil Fuels for the Electric Power Industry by Sector, Btus, 2008 and 2007**

October										
Total (All Sectors)										
Items	Receipts (billion Btu)		Cost (dollars/million Btu)		Number of Plants <sup>1</sup>		Year-to-Date			
							Receipts (billion Btu)		Cost (dollars/million Btu)	
	October 2008	October 2007	October 2008	October 2007	October 2008	October 2007	October 2008	October 2007	October 2008	October 2007
Coal <sup>2</sup> .....	1,845,020	1,859,131	2.18	1.78	485	483	17,491,733	18,049,715	2.05	1.77
Petroleum	23,048	24,130	15.55	12.07	430	358	282,937	388,608	16.93	9.14
Liquids <sup>3</sup> .....										
Petroleum Coke .....	14,551	12,912	2.14	1.44	24	26	134,994	138,576	1.83	1.55
Natural Gas <sup>4</sup> .....	637,764	663,734	6.76	6.82	1,055	884	6,635,860	6,425,024	9.58	7.05
Fossil Fuels.....	2,520,382	2,559,908	3.46	3.18	1,416	1,219	24,545,523	25,001,924	4.26	3.24

Electric Utilities										
Items	Receipts (billion Btu)		Cost (dollars/million Btu)		Number of Plants		Year-to-Date			
							Receipts (billion Btu)		Cost (dollars/million Btu)	
	October 2008	October 2007	October 2008	October 2007	October 2008	October 2007	October 2008	October 2007	October 2008	October 2007
Coal <sup>2</sup> .....	1,343,356	1,373,187	2.19	1.78	303	311	12,746,989	13,401,921	2.04	1.78
Petroleum	13,325	14,273	16.68	10.79	231	221	196,067	251,990	16.67	8.79
Liquids <sup>3</sup> .....										
Petroleum Coke .....	8,196	4,584	2.21	1.74	9	12	66,916	60,535	2.06	1.80
Natural Gas <sup>4</sup> .....	232,868	239,866	6.94	7.08	492	323	2,376,199	2,165,452	9.54	7.41
Fossil Fuels.....	1,597,745	1,631,910	3.01	2.64	708	525	15,386,172	15,879,899	3.39	2.65

Independent Power Producers										
Items	Receipts (billion Btu)		Cost (dollars/million Btu)		Number of Plants		Year-to-Date			
							Receipts (billion Btu)		Cost (dollars/million Btu)	
	October 2008	October 2007	October 2008	October 2007	October 2008	October 2007	October 2008	October 2007	October 2008	October 2007
Coal <sup>2</sup> .....	474,504	460,609	2.10	1.73	141	133	4,470,002	4,373,041	2.04	1.72
Petroleum	8,063	7,795	14.35	14.85	157	108	63,745	108,409	18.44	10.20
Liquids <sup>3</sup> .....										
Petroleum Coke .....	4,575	7,085	1.49	1.12	12	9	52,733	62,031	1.25	1.21
Natural Gas <sup>4</sup> .....	323,334	347,920	6.44	6.71	438	449	3,438,176	3,505,639	9.61	6.85
Fossil Fuels.....	810,477	823,408	3.95	3.95	568	568	8,024,656	8,049,120	5.41	4.07

Commercial Sector										
Items	Receipts (billion Btu)		Cost (dollars/million Btu)		Number of Plants		Year-to-Date			
							Receipts (billion Btu)		Cost (dollars/million Btu)	
	October 2008	October 2007	October 2008	October 2007	October 2008	October 2007	October 2008	October 2007	October 2008	October 2007
Coal <sup>2</sup> .....	882	952	3.48	2.76	3	3	9,693	10,655	3.07	2.68
Petroleum	47	2	16.56	16.40	5	2	209	237	19.56	13.72
Liquids <sup>3</sup> .....										
Petroleum Coke .....	--	--	--	--	--	--	--	--	--	--
Natural Gas <sup>4</sup> .....	1,895	1,768	8.65	7.35	8	8	18,382	18,412	9.87	7.94
Fossil Fuels.....	2,824	2,722	7.17	5.75	11	8	28,284	29,304	7.61	6.07

Industrial Sector										
Items	Receipts (billion Btu)		Cost (dollars/million Btu)		Number of Plants		Year-to-Date			
							Receipts (billion Btu)		Cost (dollars/million Btu)	
	October 2008	October 2007	October 2008	October 2007	October 2008	October 2007	October 2008	October 2007	October 2008	October 2007
Coal <sup>2</sup> .....	26,277	24,383	3.00	2.18	38	39	265,049	264,098	2.61	2.21
Petroleum	1,612	2,061	12.11	10.38	37	30	22,916	27,972	14.98	8.11
Liquids <sup>3</sup> .....										
Petroleum Coke .....	1,779	1,244	3.50	2.13	3	5	15,345	16,010	2.83	1.94
Natural Gas <sup>4</sup> .....	79,666	74,180	7.52	6.47	117	107	803,102	735,521	9.56	6.92
Fossil Fuels.....	109,335	101,867	6.44	5.47	129	124	1,106,412	1,043,601	7.91	5.68

<sup>1</sup> Represents the number of plants for which receipts data were collected for this month. The total number of fossil fuel plants is not a sum of the figures above it because a plant that receives two or more different fuels is only counted once. The total number of electric power plants using coal, petroleum liquids, petroleum coke, and natural gas in the country as of January 1, 2007 are: 620; 1,542; 46; and 1,838 respectively.

<sup>2</sup> Anthracite, bituminous, subbituminous, lignite, waste coal, and coal synfuel.

<sup>3</sup> Distillate fuel oil, residual fuel oil, jet fuel, kerosene, and waste oil.

<sup>4</sup> Natural gas includes a small amount of supplemental gaseous fuels that cannot be identified separately.

Notes: • Due to different reporting requirements between the Form EIA-923 and historical FERC Form 423, the receipts data from 2008 and on are not directly comparable to prior years. For more information, please see the Technical Notes in Appendix C. • Values for 2007 and 2008 are preliminary. Values for January through July 2007 are revised.

Sources: Energy Information Administration, Form EIA-423, "Monthly Cost and Quality of Fuels for Electric Plants Report;" Federal Energy Regulatory Commission, FERC Form 423, "Monthly Report of Cost and Quality of Fuels for Electric Plants;" Beginning with 2008 data, the Form EIA-923, "Power Plant Operations Report," replaced the

---

following: Form EIA-906, "Power Plant Report;" Form EIA-920, "Combined Heat and Power Plant Report;" Form EIA-423, "Monthly Cost and Quality of Fuels for Electric Plants Report;" and Federal Energy Regulatory Commission, FERC Form 423, "Monthly Report of Cost and Quality of Fuels for Electric Plants."



**Table ES3. New and Planned U.S. Electric Generating Units by Operating Company, Plant and Month, 2008 - 2009**

Year/Month/Company	Producer Type	Plant	State	Plant ID	Generating Unit ID	Net Summer Capacity (megawatts) <sup>1</sup>	Energy Source	Prime Mover
<b>New Units 2008</b>								
<b>January</b>								
Acciona Wind Energy USA LLC	IPP	Tatanka Wind Power LLC	ND	56669	TW1	180.0	WND	WT
BC Energy LLC	IPP	BC Energy LLC	MN	56624	1	4.0	WND	WT
Black Hills Power Inc	Elect. Utility	Wygen 2	WY	56319	1	89.0	SUB	ST
City of Columbus	Elect. Utility	Dodge Park 0007	OH	56423	7	2.0	DFO	IC
City of Columbus	Elect. Utility	ST- 1A 0006	OH	56422	6	1.3	DFO	IC
City of Columbus	Elect. Utility	ST-8 0005	OH	56421	5	2.0	DFO	IC
FPL Energy Oliver County Wind II LLC	IPP	FPL Energy Oliver Wind II LLC	ND	56573	2	48.0	WND	WT
Harvest Windfarm LLC	IPP	Harvest Windfarm LLC	MI	56635	1	52.8	WND	WT
Iberdrola Renewable Energies USA	IPP	Top of Iowa Windfarm II	IA	56383	TOI2	80.0	WND	WT
John Deere Wind 4 LLC	IPP	JD Wind 4 LLC	TX	56560	JDW4	79.8	WND	WT
K&D Energy LLC	IPP	K&D Energy LLC	MN	56626	1	4.0	WND	WT
KC Energy LLC	IPP	KC Energy LLC	MN	56625	1	4.0	WND	WT
KSS Turbines LLC	IPP	KSS Turbines LLC	MN	56627	1	4.0	WND	WT
Mint Farm Energy Center LLC	IPP	Mint Farm Generation LLC	WA	55700	1STG	114.4	NG	CA
Mint Farm Energy Center LLC	IPP	Mint Farm Generation LLC	WA	55700	CTG1	160.0	NG	CT
P P M Energy Inc	IPP	MinnDakota Wind LLC	SD	56459	2	150.0	WND	WT
PacificCorp	Elect. Utility	Marengo Wind Plant	WA	56466	2	70.2	WND	WT
Prairie Wind Power LLC	IPP	Prairie Wind Power LLC	MN	56628	1	4.0	WND	WT
Smoky Hills Wind Farm LLC	IPP	Smoky Hills Windfarm	KS	56488	1	100.8	WND	WT
Southwestern Bell Telephone Co.	Commercial	Southwestern Bell Telephone	MO	54858	E/G5	2.7	DFO	IC
US Geothermal Inc	IPP	Raft River Geothermal Power Plant	ID	56317	1	16.7	GEO	ST
Wind Capital Holdings LLC	IPP	Wind Capital Holdings LLC	MO	56555	1	56.7	WND	WT
<b>February</b>								
Airtricity Inc	IPP	Airtricity Champion Wind Farm LLC	TX	56592	CH1	126.5	WND	WT
Airtricity Inc	IPP	Airtricity Roscoe Wind Farm LLC	TX	56593	RO1	209.0	WND	WT
Idaho Power Co	Elect. Utility	Evander Andrews Power Complex	ID	7953	1	146.9	NG	GT
Industrial Power Generating Company LLC	IPP	Pine Grove	PA	56690	1	.3	LFG	IC
Industrial Power Generating Company LLC	IPP	Pine Grove	PA	56690	10	.3	LFG	IC
Industrial Power Generating Company LLC	IPP	Pine Grove	PA	56690	11	.3	LFG	IC
Industrial Power Generating Company LLC	IPP	Pine Grove	PA	56690	12	.3	LFG	IC
Industrial Power Generating Company LLC	IPP	Pine Grove	PA	56690	13	.3	LFG	IC
Industrial Power Generating Company LLC	IPP	Pine Grove	PA	56690	14	.3	LFG	IC
Industrial Power Generating Company LLC	IPP	Pine Grove	PA	56690	15	.3	LFG	IC
Industrial Power Generating Company LLC	IPP	Pine Grove	PA	56690	16	.3	LFG	IC
Industrial Power Generating Company LLC	IPP	Pine Grove	PA	56690	17	.3	LFG	IC
Industrial Power Generating Company LLC	IPP	Pine Grove	PA	56690	18	.3	LFG	IC
Industrial Power Generating Company LLC	IPP	Pine Grove	PA	56690	2	.3	LFG	IC
Industrial Power Generating Company LLC	IPP	Pine Grove	PA	56690	3	.3	LFG	IC
Industrial Power Generating Company LLC	IPP	Pine Grove	PA	56690	4	.3	LFG	IC
Industrial Power Generating Company LLC	IPP	Pine Grove	PA	56690	5	.3	LFG	IC
Industrial Power Generating Company LLC	IPP	Pine Grove	PA	56690	6	.3	LFG	IC
Industrial Power Generating Company LLC	IPP	Pine Grove	PA	56690	7	.3	LFG	IC
Industrial Power Generating Company LLC	IPP	Pine Grove	PA	56690	8	.3	LFG	IC
Industrial Power Generating Company LLC	IPP	Pine Grove	PA	56690	9	.3	LFG	IC
Invenergy Services LLC	IPP	Stanton Wind Energy LLC	TX	56644	1	120.0	WND	WT
Loess Hills Farm LLC	IPP	Loess Hills Wind Farm LLC	MO	56538	1	5.0	WND	WT
Madison Gas & Electric Co	Elect. Utility	Top of Iowa Windfarm III	IA	56386	TOI3	29.7	WND	WT
Old Trail Wind Farm LLC	CHP	Old Trail Wind Farm	IL	56614	2	198.0	WND	WT
Ormat Nevada Inc	IPP	Galena 3	NV	56541	GEN1	8.5	GEO	BT
Ormat Nevada Inc	IPP	Galena 3	NV	56541	GEN2	4.2	GEO	BT
Public Service Co of Oklahoma	Elect. Utility	Southwestern	OK	2964	4	73.5	NG	GT
Public Service Co of Oklahoma	Elect. Utility	Southwestern	OK	2964	5	73.5	NG	GT
WM Renewable Energy LLC	IPP	Bethel	VA	56531	GEN1	.8	LFG	IC
WM Renewable Energy LLC	IPP	Bethel	VA	56531	GEN2	.8	LFG	IC
WM Renewable Energy LLC	IPP	Bethel	VA	56531	GEN3	.8	LFG	IC
WM Renewable Energy LLC	IPP	Bethel	VA	56531	GEN4	.8	LFG	IC
WM Renewable Energy LLC	IPP	Bethel	VA	56531	GEN5	.8	LFG	IC
WM Renewable Energy LLC	IPP	Bethel	VA	56531	GEN6	.8	LFG	IC
WM Renewable Energy LLC	IPP	Five Oaks Gas Recovery	IL	56529	GEN1	.8	LFG	IC
WM Renewable Energy LLC	IPP	Five Oaks Gas Recovery	IL	56529	GEN2	.8	LFG	IC
WM Renewable Energy LLC	IPP	Five Oaks Gas Recovery	IL	56529	GEN3	.8	LFG	IC
WM Renewable Energy LLC	IPP	Five Oaks Gas Recovery	IL	56529	GEN4	.8	LFG	IC

**Table ES3. New and Planned U.S. Electric Generating Units by Operating Company, Plant and Month, 2008 - 2009**  
(Continued)

Year/Month/Company	Producer Type	Plant	State	Plant ID	Generating Unit ID	Net Summer Capacity (megawatts) <sup>1</sup>	Energy Source	Prime Mover
<b>New Units 2008</b>								
<b>March</b>								
Bethlehem Renewable Energy LLC .....	IPP	Bethlehem Renewable Energy LLC	PA	56572	1	4.7	LFG	GT
Bio-Energy Partners .....	IPP	High Acres Gas Recovery	NY	50568	GEN5	1.6	LFG	IC
Bio-Energy Partners .....	IPP	High Acres Gas Recovery	NY	50568	GEN6	1.6	LFG	IC
Bio-Energy Partners .....	IPP	High Acres Gas Recovery	NY	50568	GEN7	1.6	LFG	IC
Bio-Energy Partners .....	IPP	High Acres Gas Recovery	NY	50568	GEN8	1.6	LFG	IC
Shell Wind Energy Inc. ....	IPP	NedPower Mount Storm	WV	56495	MS1	164.0	WND	WT
<b>April</b>								
Capricorn Ridge Wind LLC .....	IPP	Capricorn Ridge Wind LLC	TX	56763	3	186.0	WND	WT
Cow Branch Wind Power LLC .....	IPP	Cow Branch Wind Power LLC	MO	56536	1	50.4	WND	WT
Edison Mission Energy .....	IPP	Forward Windpower LLC	PA	56699	1	29.4	WND	WT
Edison Mission Energy .....	IPP	Goat Wind LP	TX	56754	1	80.0	WND	WT
Invenergy Cannon Falls LLC .....	IPP	Cannon Falls Energy Center	MN	56241	UNT1	169.2	NG	GT
Invenergy Cannon Falls LLC .....	IPP	Cannon Falls Energy Center	MN	56241	UNT2	169.2	NG	GT
Madison Paper Industries Inc. ....	Industrial	Anson Abenaki Hydros	ME	10186	AB6	2.9	WAT	HY
MidAmerican Energy Co. ....	Elect. Utility	Charles City	IA	56677	CCWF	75.0	WND	WT
South Oak Hospital .....	Commercial	South Oaks Hospital	NY	50136	CG1	.2	NG	IC
South Oak Hospital .....	Commercial	South Oaks Hospital	NY	50136	CG2	.2	NG	IC
South Oak Hospital .....	Commercial	South Oaks Hospital	NY	50136	CG3	.2	NG	IC
South Oak Hospital .....	Commercial	South Oaks Hospital	NY	50136	CG4	.2	NG	IC
South Oak Hospital .....	Commercial	South Oaks Hospital	NY	50136	CG5	.2	NG	IC
<b>May</b>								
Capricorn Ridge Wind LLC .....	IPP	Capricorn Ridge Wind LLC	TX	56763	4	112.5	WND	WT
Edison Mission Energy .....	IPP	OWF Five LLC	MN	56759	1	2.5	WND	WT
Edison Mission Energy .....	IPP	OWF Four LLC	MN	56758	1	2.5	WND	WT
Edison Mission Energy .....	IPP	OWF Seven LLC	MN	56761	1	2.5	WND	WT
Edison Mission Energy .....	IPP	OWF Six LLC	MN	56760	1	2.5	WND	WT
Edison Mission Energy .....	IPP	OWF Two LLC	MN	56756	1	2.5	WND	WT
Edison Mission Energy .....	IPP	Odin Wind Farm	MN	56755	1	2.5	WND	WT
Florida Municipal Power Agency .....	Elect. Utility	Treasure Coast Energy Center	FL	56400	CC1	273.5	NG	CC
Invenergy LLC .....	Elect. Utility	Grays Harbor Energy Facility	WA	7999	CT1	150.5	NG	CT
Invenergy LLC .....	Elect. Utility	Grays Harbor Energy Facility	WA	7999	CT2	150.5	NG	CT
Invenergy LLC .....	Elect. Utility	Grays Harbor Energy Facility	WA	7999	ST1	258.0	NG	CA
Noble Wind Operations LLC .....	IPP	Noble Bliss Windpark LLC	NY	56620	1	100.5	WND	WT
Noble Wind Operations LLC .....	IPP	Noble Clinton Windpark LLC	NY	56618	1	100.5	WND	WT
Noble Wind Operations LLC .....	IPP	Noble Ellenburg Windpark LLC	NY	56619	1	81.0	WND	WT
Northern States Power Co. ....	Elect. Utility	High Bridge	MN	1912	7	169.2	NG	CC
Northern States Power Co. ....	Elect. Utility	High Bridge	MN	1912	8	169.2	NG	CC
Northern States Power Co. ....	Elect. Utility	High Bridge	MN	1912	9	215.0	NG	CC
Plains End Operating Services LLC .....	IPP	Plains End II LLC	CO	56516	2G01	5.6	NG	IC
Plains End Operating Services LLC .....	IPP	Plains End II LLC	CO	56516	2G02	5.6	NG	IC
Plains End Operating Services LLC .....	IPP	Plains End II LLC	CO	56516	2G03	5.6	NG	IC
Plains End Operating Services LLC .....	IPP	Plains End II LLC	CO	56516	2G04	5.6	NG	IC
Plains End Operating Services LLC .....	IPP	Plains End II LLC	CO	56516	2G05	5.6	NG	IC
Plains End Operating Services LLC .....	IPP	Plains End II LLC	CO	56516	2G06	5.6	NG	IC
Plains End Operating Services LLC .....	IPP	Plains End II LLC	CO	56516	2G07	5.6	NG	IC
Plains End Operating Services LLC .....	IPP	Plains End II LLC	CO	56516	2G08	5.6	NG	IC
Plains End Operating Services LLC .....	IPP	Plains End II LLC	CO	56516	2G09	5.6	NG	IC
Plains End Operating Services LLC .....	IPP	Plains End II LLC	CO	56516	2G10	5.6	NG	IC
Plains End Operating Services LLC .....	IPP	Plains End II LLC	CO	56516	2G11	5.6	NG	IC
Plains End Operating Services LLC .....	IPP	Plains End II LLC	CO	56516	2G12	5.6	NG	IC
Plains End Operating Services LLC .....	IPP	Plains End II LLC	CO	56516	2G13	5.6	NG	IC
Plains End Operating Services LLC .....	IPP	Plains End II LLC	CO	56516	2G14	5.6	NG	IC
Southern Power Co. ....	IPP	H Allen Franklin Combined Cycle	AL	7710	CT3A	174.7	NG	CT
Southern Power Co. ....	IPP	H Allen Franklin Combined Cycle	AL	7710	CT3B	174.7	NG	CT
Southern Power Co. ....	IPP	H Allen Franklin Combined Cycle	AL	7710	ST3	242.4	NG	CA
Unisource Energy Development Company .....	IPP	Black Mountain Generating Station	AZ	56482	1	40.8	NG	GT
Unisource Energy Development Company .....	IPP	Black Mountain Generating Station	AZ	56482	2	40.8	NG	GT
Valencia Power LLC .....	IPP	Valencia Energy Facility	NM	55802	CTG1	135.6	NG	GT
Westar Energy Inc. ....	Elect. Utility	Emporia Energy Center	KS	56502	3	34.0	NG	GT
Westar Energy Inc. ....	Elect. Utility	Emporia Energy Center	KS	56502	4	34.0	NG	GT
Wisconsin Electric Power Co. ....	Elect. Utility	Blue Sky Green Field Wind Project	WI	56391	1	145.2	WND	WT
Wisconsin Electric Power Co. ....	Elect. Utility	Port Washington Generating Station	WI	4040	1CT1	143.6	NG	CT

**Table ES3. New and Planned U.S. Electric Generating Units by Operating Company, Plant and Month, 2008 - 2009  
(Continued)**

Year/Month/Company	Producer Type	Plant	State	Plant ID	Generating Unit ID	Net Summer Capacity (megawatts) <sup>1</sup>	Energy Source	Prime Mover
<b>New Units 2008</b>								
Wisconsin Electric Power Co .....	Elect. Utility	Port Washington Generating Station	WI	4040	1CT2	143.6	NG	CT
Wisconsin Electric Power Co .....	Elect. Utility	Port Washington Generating Station	WI	4040	ST1	231.3	NG	CA
<b>Year-to-Date Capacity of New Units.....</b>	--	--	--	--	--	<b>6,587.3</b>	--	--
<b>Year-to-Date U.S. Capacity.....</b>	--	--	--	--	--	<b>1,005,424.7</b>	--	--
<b>Planned</b>								
<b>2008.</b>								
June .....	--	--	--	--	--	3,658		
July .....	--	--	--	--	--	612		
August .....	--	--	--	--	--	1,194		
September.....	--	--	--	--	--	163		
October.....	--	--	--	--	--	207		
November.....	--	--	--	--	--	110		
December .....	--	--	--	--	--	1,656		
<b>2009.</b>								
January .....	--	--	--	--	--	1,205		
February .....	--	--	--	--	--	42		
March .....	--	--	--	--	--	774		
April .....	--	--	--	--	--	1,837		

<sup>1</sup> Net summer capacity is estimated.

Notes: • See Glossary for definitions. • Totals may not equal sum of components because of independent rounding. • Descriptions for the Energy Source and Prime Mover codes listed in the table can be obtained from the Form EIA-860 instructions at the following link: <http://www.eia.doe.gov/cneaf/electricity/forms/eia860/eia860.pdf>

Source: Energy Information Administration, Form EIA-860, "Annual Electric Generator Report" and Form EIA-860M, "Monthly Update to the Annual Electric Generator Report."

**Table ES4. Plants Sold and Transferred in 2006, 2007 and 2008**

Seller	Plant	State	EIA Plant ID	Net Summer Capacity (Megawatts)		Transaction Closing Date	Buyer
				Plant Total	Sold or Transferred		
Cincinnati Gas & Electric Co .....	East Bend	KY	6018	600	414	January 01, 2006	Union Light Heat & Power
Cincinnati Gas & Electric Co .....	Miami Fort Unit 6	OH	2832	163	163	January 01, 2006	Union Light Heat & Power
Cincinnati Gas & Electric Co .....	Woodsdale	OH	7158	462	462	January 01, 2006	Union Light Heat & Power
Pinnacle West Capital .....	Silverhawk	NV	55841	570	428	January 10, 2006	Nevada Power
Interstate Power and Light .....	Duane Arnold	IA	1060	597	418	January 27, 2006	FPL Energy LLC
National Energy Group .....	Chula Vista	CA	55538	34	34	January 31, 2006	MMC Energy
National Energy Group .....	Escondido	CA	55540	34	34	January 31, 2006	MMC Energy
Texas GenCo Holdings .....	Cedar Bayou	TX	3460	2,258	2,258	February 02, 2006	NRG Energy, Inc.
Texas GenCo Holdings .....	Deepwater	TX	3461	174	174	February 02, 2006	NRG Energy, Inc.
Texas GenCo Holdings .....	Greens Bayou	TX	3464	760	760	February 02, 2006	NRG Energy, Inc.
Texas GenCo Holdings .....	HO Clarke	TX	3465	78	78	February 02, 2006	NRG Energy, Inc.
Texas GenCo Holdings .....	Limestone	TX	298	1,602	1,602	February 02, 2006	NRG Energy, Inc.
Texas GenCo Holdings .....	PH Robinson	TX	3466	2,211	2,211	February 02, 2006	NRG Energy, Inc.
Texas GenCo Holdings .....	Sam Bertron	TX	3468	844	844	February 02, 2006	NRG Energy, Inc.
Texas GenCo Holdings .....	San Jacinto	TX	7325	162	162	February 02, 2006	NRG Energy, Inc.
Texas GenCo Holdings .....	South Texas Project	TX	6251	2,560	1,126	February 02, 2006	NRG Energy, Inc.
Texas GenCo Holdings .....	TH Wharton	TX	3469	1,254	1,254	February 02, 2006	NRG Energy, Inc.
Texas GenCo Holdings .....	WA Parish	TX	3470	3,653	3,653	February 02, 2006	NRG Energy, Inc.
Texas GenCo Holdings .....	Webster	TX	3471	387	387	February 02, 2006	NRG Energy, Inc.
Reliant .....	Astoria	NY	8906	1,290	1,290	February 24, 2006	Madison Dearborn Partners & US Power Gen
Reliant .....	Gowanus	NY	2494	546	546	February 24, 2006	Madison Dearborn Partners & US Power Gen
Reliant .....	Narrows	NY	2499	279	279	February 24, 2006	Madison Dearborn Partners & US Power Gen
NRG Energy .....	Audrain	MO	55234	640	640	March 29, 2006	Ameren
Central Mississippi Generating Company .....	Attala	MS	55220	500	500	March 31, 2006	Entergy
North American Power Group .....	San Joaquin Cogen	CA	50062	46	46	April 19, 2006	MDU Resources Group
Duke Energy .....	Arlington Valley	AZ	55282	580	580	May 05, 2006	LS Power
Duke Energy .....	Bridgeport Energy	CT	55042	454	304	May 05, 2006	LS Power
Duke Energy .....	Griffith Energy	AZ	55124	588	294	May 05, 2006	LS Power
Duke Energy .....	Maine Independence	ME	55068	490	490	May 05, 2006	LS Power
Duke Energy .....	Morro Bay	CA	259	1,036	1,036	May 05, 2006	LS Power
Duke Energy .....	Moss Landing	CA	260	2,080	2,080	May 05, 2006	LS Power
Duke Energy .....	Oakland Power Plant	CA	6211	158	158	May 05, 2006	LS Power
Duke Energy .....	South Bay	CA	55185	707	707	May 05, 2006	LS Power
Mirant Wichita Falls LP .....	Mirant Wichita Falls LP	TX	50127	77	77	May 05, 2006	Signal Hill Power LLC
Peoples Energy .....	Southeast Chicago Energy Project	IL	55281	304	90	May 15, 2006	Exelon
Progress Ventures .....	DeSoto County Plant	FL	55422	313	313	June 01, 2006	Southern Power
PPL Corporation .....	Griffith Energy	AZ	55124	588	294	June 30, 2006	LS Power
Sempra Energy Partners .....	Barney M Davis	TX	4939	697	349	July 10, 2006	Carlyle/Riverstone Global Energy and Pow
Sempra Energy Partners .....	J L Bates	TX	3438	182	91	July 10, 2006	Carlyle/Riverstone Global Energy and Pow
Sempra Energy Partners .....	La Palma	TX	3442	255	128	July 10, 2006	Carlyle/Riverstone Global Energy and Pow
Sempra Energy Partners .....	Laredo	TX	3439	178	89	July 10, 2006	Carlyle/Riverstone Global Energy and Pow
Sempra Energy Partners .....	Lon C Hill	TX	3440	559	280	July 10, 2006	Carlyle/Riverstone Global Energy and Pow
Sempra Energy Partners .....	Nueces Bay	TX	3441	559	280	July 10, 2006	Carlyle/Riverstone Global Energy and Pow
Sempra Energy Partners .....	Victoria	TX	3443	491	246	July 10, 2006	Carlyle/Riverstone Global Energy and Pow
Sempra Energy Partners; Carlyle/Riversto .....	Coletto Creek	TX	6178	600	600	July 10, 2006	International Power PLC
Atlantic City Electric .....	Conemaugh	PA	3118	1,700	65	September 01, 2006	Duquesne Light Holdings
Atlantic City Electric .....	Keystone	PA	3136	1,700	42	September 01, 2006	Duquesne Light Holdings
Progress Ventures .....	Rowan	NC	7826	978	978	September 05, 2006	Southern Power
ONEOK .....	Spring Creek	OK	55651	280	280	October 31, 2006	Westar
Northeast Utilities .....	Bulls Ridge	CT	541	8	8	November 01, 2006	Energy Capital Partners
Northeast Utilities .....	Cabot	MA	1629	62	62	November 01, 2006	Energy Capital Partners
Northeast Utilities .....	Falls Village	CT	560	10	10	November 01, 2006	Energy Capital Partners
Northeast Utilities .....	Mt. Tom	MA	1606	144	144	November 01, 2006	Energy Capital Partners
Northeast Utilities .....	Northfield Mountain	MA	547	1,080	1,080	November 01, 2006	Energy Capital Partners
Northeast Utilities .....	Rocky River	CT	539	29	29	November 01, 2006	Energy Capital Partners
Northeast Utilities .....	Scotland	CT	551	2	2	November 01, 2006	Energy Capital Partners
Northeast Utilities .....	Shepaug	CT	552	42	42	November 01, 2006	Energy Capital Partners
Northeast Utilities .....	Stevenson	CT	553	28	28	November 01, 2006	Energy Capital Partners

**Table ES4. Plants Sold and Transferred in 2006, 2007 and 2008**

Seller	Plant	State	EIA Plant ID	Net Summer Capacity (Megawatts)		Transaction Closing Date	Buyer
				Plant Total	Sold or Transferred		
Northeast Utilities	Taftville	CT	554	2	2	November 01, 2006	Energy Capital Partners
Northeast Utilities	Tunnel	CT	557	17	17	November 01, 2006	Energy Capital Partners
Northeast Utilities	Turners Falls	MA	6388	6	6	November 01, 2006	Energy Capital Partners
Dynegy	Rockingham Power	NC	55116	775	775	November 10, 2006	Duke Energy Carolinas
Consumers Energy	Midland Cogeneration	MI	10745	1,833	641	November 21, 2006	GSO Capital Partners and Rockland Capital Energy Investments
American Electric Power	Plaquemine	LA	55419	844	844	December 01, 2006	Dow Chemical
Constellation Energy	Big Sandy	WV	55284	300	300	December 15, 2006	Tenaska
Constellation Energy	High Desert	CA	55518	780	780	December 15, 2006	Tenaska
Constellation Energy	Holland Energy	IL	55334	449	449	December 15, 2006	Tenaska
Constellation Energy	Rio Nogales	TX	55137	705	705	December 15, 2006	Tenaska
Constellation Energy	University Park	IL	55250	300	300	December 15, 2006	Tenaska
Constellation Energy	Wolf Hills	VA	55285	250	250	December 15, 2006	Tenaska
Gamesa	Mendota Hills	IL	56160	50	50	January 03, 2007	Babcock and Brown
NRG Energy	Chowchilla II	CA	56185	47	47	January 03, 2007	Wayzata Investment Partners
NRG Energy	Red Bluff	CA	56184	45	45	January 03, 2007	Wayzata Investment Partners
Calpine Corp	Aries Power Project	MO	55178	620	620	January 16, 2007	Kelson Holdings
Peoples Energy	Elwood	IL	55199	1,350	675	January 17, 2007	J-Power
WPS Energy Services	WPS Power Niagara	NY	50202	53	53	January 31, 2007	US Renewables Group
Atlantic City Electric	BL England	NJ	2378	447	447	February 09, 2007	Rockland Capital Energy Investments
American Electric Power	Oklaunion	TX	127	690	25	February 15, 2007	Brownsville Public Utility Board
Dominion Energy	Armstrong	PA	55347	584	584	March 05, 2007	Tenaska and Warburg Pincus
Dominion Energy	Pleasants	WV	55349	392	392	March 05, 2007	Tenaska and Warburg Pincus
Dominion Energy	Troy	OH	55348	584	584	March 05, 2007	Tenaska and Warburg Pincus
Calpine Corp	Goldendale Energy Center	WA	55482	220	220	March 21, 2007	Puget Sound Energy
Consumers Energy	Palisades	MI	1715	778	778	April 11, 2007	Entergy
DPL Energy	Darby	OH	55247	452	452	April 25, 2007	Columbus Southern Power
DPL Energy	Greenville Electric Generating Station	OH	55228	176	176	April 25, 2007	Buckeye Power
Mirant	Apex	NV	55514	494	494	May 01, 2007	LS Power
Mirant	Bosque	TX	55172	548	548	May 01, 2007	LS Power
Mirant	Shady Hills	FL	55414	468	468	May 01, 2007	LS Power
Mirant	Sugar Creek	IN	55364	521	521	May 01, 2007	LS Power
Mirant	West Georgia	GA	55267	762	762	May 01, 2007	LS Power
Mirant	Zealand	MI	55087	770	770	May 01, 2007	LS Power
PSEG	Lawrenceburg Energy Center	IN	55502	1,082	1,082	May 17, 2007	AEP
Algonquin Power	EKS Landfill	MN	54939	4	4	June 30, 2007	WM Renewable Energy
FirstEnergy	Bruce Mansfield	PA	6094	2,460	830	July 13, 2007	AIG Financial Products and Union Bank of California
KeySpan	EF Barrett	NY	2511	690	690	August 24, 2007	National Grid
KeySpan	East Hampton	NY	2512	24	24	August 24, 2007	National Grid
KeySpan	Far Rockaway	NY	2513	111	111	August 24, 2007	National Grid
KeySpan	Glenwood	NY	2514	339	339	August 24, 2007	National Grid
KeySpan	Holtsville	NY	8007	524	524	August 24, 2007	National Grid
KeySpan	Landing	NY	7869	94	94	August 24, 2007	National Grid
KeySpan	Montauk	NY	2515	5	5	August 24, 2007	National Grid
KeySpan	Northport	NY	2516	1,565	1,565	August 24, 2007	National Grid
KeySpan	Port Jefferson	NY	2517	559	559	August 24, 2007	National Grid
KeySpan	Ravenswood	NY	2500	2,324	2,324	August 24, 2007	National Grid
KeySpan	Shoreham	NY	2518	64	64	August 24, 2007	National Grid
KeySpan	South Hampton	NY	2519	7	7	August 24, 2007	National Grid
KeySpan	Southold	NY	2520	12	12	August 24, 2007	National Grid
KeySpan	Wading River	NY	7146	241	241	August 24, 2007	National Grid
KeySpan	West Babylon	NY	2521	49	49	August 24, 2007	National Grid
Calpine	Acadia	LA	55173	1,063	532	September 13, 2007	Cajun Gas Energy
American Electric Power	Sweeny	TX	55015	480	240	October 01, 2007	ConocoPhillips
Wisconsin Electric Power	Point Beach	WI	4046	1,041	1,041	October 01, 2007	FPL Energy LLC
City of Klamath Falls	Klamath Cogeneration Plant	OR	55103	470	470	December 05, 2007	PPM Energy
Algonquin Power	Colton Landfill	CA	56167	1	1	December 21, 2007	Fortistar
Algonquin Power	Mid Valley Landfill	CA	56170	3	3	December 21, 2007	Fortistar
Algonquin Power	Milliken Landfill	CA	56171	2	2	December 21, 2007	Fortistar
Algonquin Power	Prima Desheha Landfill	CA	55601	5	5	December 21, 2007	Fortistar
Algonquin Power	Tajiguas Landfill	CA	55603	3	3	December 21, 2007	Fortistar
Algonquin Power Income Fund	Four Hills Nashua Landfill	NH	55006	3	3	December 21, 2007	Fortistar
Duke Energy Indiana	Wabash River	IN	1010	950	274	January 01, 2008	Wabash Valley Power Association
Tenaska	Commonwealth Chesapeake	VA	55381	312	312	February 15, 2008	Tyr Energy
Dynegy	Calcasieu	LA	55165	310	310	April 01, 2008	Entergy Gulf States
Duke Energy	Brownsville Peaking Power	TN	55081	450	450	April 11, 2008	TVA
Jersey Central Power & Light	Forked River	NJ	7138	66	66	April 17, 2008	Maxim
GE Energy Financial Services	Birchwood Power	VA	54304	238	118	May 09, 2008	J-Power
Southaven Operating Services	Southaven Power	MS	55269	759	759	May 09, 2008	TVA

**Table ES4. Plants Sold and Transferred in 2006, 2007 and 2008**

Seller	Plant	State	EIA Plant ID	Net Summer Capacity (Megawatts)		Transaction Closing Date	Buyer
				Plant Total	Sold or Transferred		
SCS Energy .....	Astoria	NY	55375	312	95	May 26, 2008	Suez Energy International
LS Power .....	Sugar Creek Energy	IN	55364	521	521	June 23, 2008	Northern Indiana Public Service
NiSource .....	Whiting Clean Energy	IN	55259	547	547	July 01, 2008	BP Alternative Energy North America
Black Hills .....	Arapahoe Combustion Turbine Project	CO	55200	123	123	July 28, 2008	Hastings Funds management and IIF
Black Hills .....	Fountain Valley	CO	55453	234	234	July 28, 2008	BH Investment
Black Hills .....	Harbor Cogeneration	CA	50541	102	102	July 28, 2008	Hastings Funds Management and IIF
Black Hills .....	Las Vegas Cogeneration	NV	10761	50	50	July 28, 2008	BH Investment
Black Hills .....	Las Vegas Cogeneration II	NV	55952	220	220	July 28, 2008	Hastings Funds Management and IIF
Black Hills .....	Valmont Combustion Turbine Project	CO	55207	80	80	July 28, 2008	BH Investment
Sumas Cogeneration .....	Sumas Power Plant	WA	54476	126	126	July 28, 2008	Hastings Funds management and IIF
Tenaska .....	Armstrong	PA	55347	584	584	July 30, 2008	International Power
Tenaska .....	Calumet	IL	50166	329	329	July 30, 2008	International Power
Tenaska .....	Pleasants	WV	55349	292	292	July 30, 2008	International Power
Tenaska .....	Troy	OH	55348	584	584	July 30, 2008	International Power
Dynegy .....	Rolling Hills	OH	55401	825	825	August 01, 2008	Tenaska
Pittsfield Generating Company .....	Pittsfield Generating	MA	50002	141	141	August 06, 2008	Maxim
National Grid .....	Ravenswood	NY	2500	2,318	2,318	August 26, 2008	TransCanada
Suez Energy North America .....	Chehalis Generating Facility	WA	55662	495	495	September 16, 2008	PacifiCorp
Kelson Hodings .....	Redbud	OK	55463	1,144	1,144	September 29, 2008	Oklahoma Gas & Electric
GE Energy Services .....	Fox Energy Center	WI	56031	600	300	Pending	Tyr Energy
Black Hills .....	Wygen I	WY	55479	70	16	Pending	Municipal Energy Agency of Nebraska
Mach Gen LLC .....	Covert Generating Project	MI	55297	1,058	1,058	Pending	Tenaska
Reliant .....	Bighorn Generating Station	NV	55687	570	570	Pending	Nevada Power

Notes: • The "Transaction Closing Date" is estimated based on press reports and Security and Exchange Commission filings. • The "Capacity Sold or Transferred" values are based on a combination of capacity data in the EIA-860 data files, press reports and Security and Exchange Commission filings, and may not exactly match transaction values shown in other sources. • A power plant may appear more than once on this list due to involvement in multiple transactions, such as the sale of different shares of the plant at different points in time. • Data are preliminary. Final data for the year are to be released in the Form EIA-860 annual databases.

Source: Press reports; filings with the Security and Exchange Commission; Energy Information Administration, Form EIA-860 "Annual Electric Generator Report" data files.