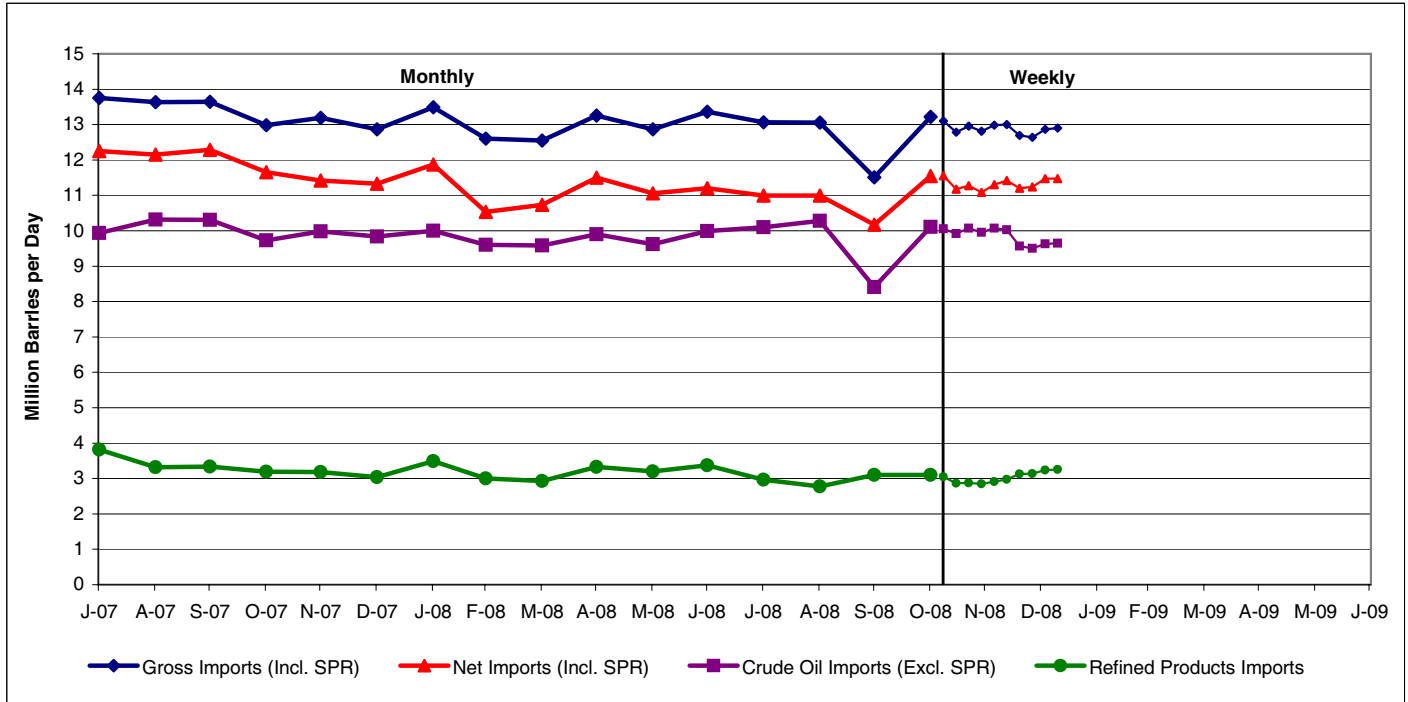


**Figure 8. U.S. Imports of Crude Oil and Petroleum Products, July 2007 to Present**



**Table 8. U.S. Imports of Crude Oil and Petroleum Products, January 2007 to Present**  
(Thousand Barrels per Day)

Year/Product	Jan	Feb	Mar	Apr	May	Jun	Jul	Aug	Sep	Oct	Nov	Dec
<b>2007</b>												
Crude Oil (Excl. SPR)	10,211	9,009	10,362	10,161	10,328	10,015	9,939	10,316	10,307	9,733	9,985	9,835
SPR	0	0	0	0	0	0	0	0	0	0	0	0
Refined Products	3,495	3,164	3,576	3,681	3,876	3,538	3,815	3,318	3,339	3,196	3,184	3,035
Gross Imports (Incl. SPR)	13,706	12,173	13,956	13,842	14,204	13,553	13,754	13,634	13,646	12,981	13,188	12,869
Total Exports <sup>1</sup>	1,446	1,350	1,274	1,360	1,441	1,331	1,506	1,483	1,361	1,325	1,767	1,542
Net Imports (Incl. SPR)	12,260	10,823	12,682	12,482	12,764	12,222	12,248	12,151	12,285	11,655	11,421	11,327
<b>2008</b>												
Crude Oil (Excl. SPR)	10,000	9,606	9,583	9,904	9,624	9,994	10,101	10,284	8,407	10,111		
SPR	0	0	0	0	0	0	0	0	0	0		
Refined Products	3,492	2,998	2,932	3,330	3,204	3,373	2,963	2,776	3,105	3,105		
Gross Imports (Incl. SPR)	13,493	12,604	12,550	13,252	12,862	13,367	13,064	13,060	11,512	13,217		
Total Exports <sup>1</sup>	1,623	2,072	1,823	1,754	1,806	2,165	2,069	2,068	1,338	1,669		
Net Imports (Incl. SPR)	11,869	10,531	10,728	11,498	11,056	11,202	10,995	10,992	10,174	11,548		
Average for Four-Week Period Ending:												
<b>2008 - 2009</b>												
Crude Oil (Excl. SPR)	10,311	10,218	10,053	9,921	10,076	9,959	10,073	10,024	9,564	9,500	9,631	9,645
SPR	0	0	0	0	0	0	0	0	0	0	0	0
Refined Products	3,432	3,277	3,045	2,863	2,879	2,851	2,909	2,978	3,132	3,138	3,238	3,254
Gross Imports (Incl. SPR)	13,743	13,494	13,098	12,784	12,956	12,811	12,982	13,002	12,695	12,638	12,869	12,899
Total Exports <sup>1</sup>	1,511	1,532	1,547	1,613	1,678	1,722	1,678	1,584	1,489	1,395	1,395	1,425
Net Imports (Incl. SPR)	12,232	11,962	11,551	11,171	11,278	11,089	11,305	11,419	11,206	11,243	11,474	11,474

<sup>1</sup> Includes exports of crude oil and refined petroleum products. Crude oil exports are restricted to (1) crude oil derived from fields under the State waters of Alaska's Cook Inlet, (2) certain domestically produced crude oil destined for Canada, and (3) shipments to U.S. territories.

Notes: Some data are estimates. See Sources for clarification of estimated data. Data may not add to total due to independent rounding.

Source: See page 33.