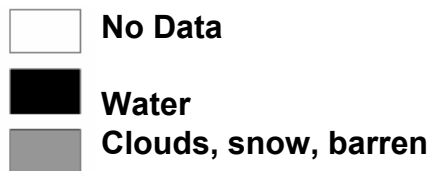
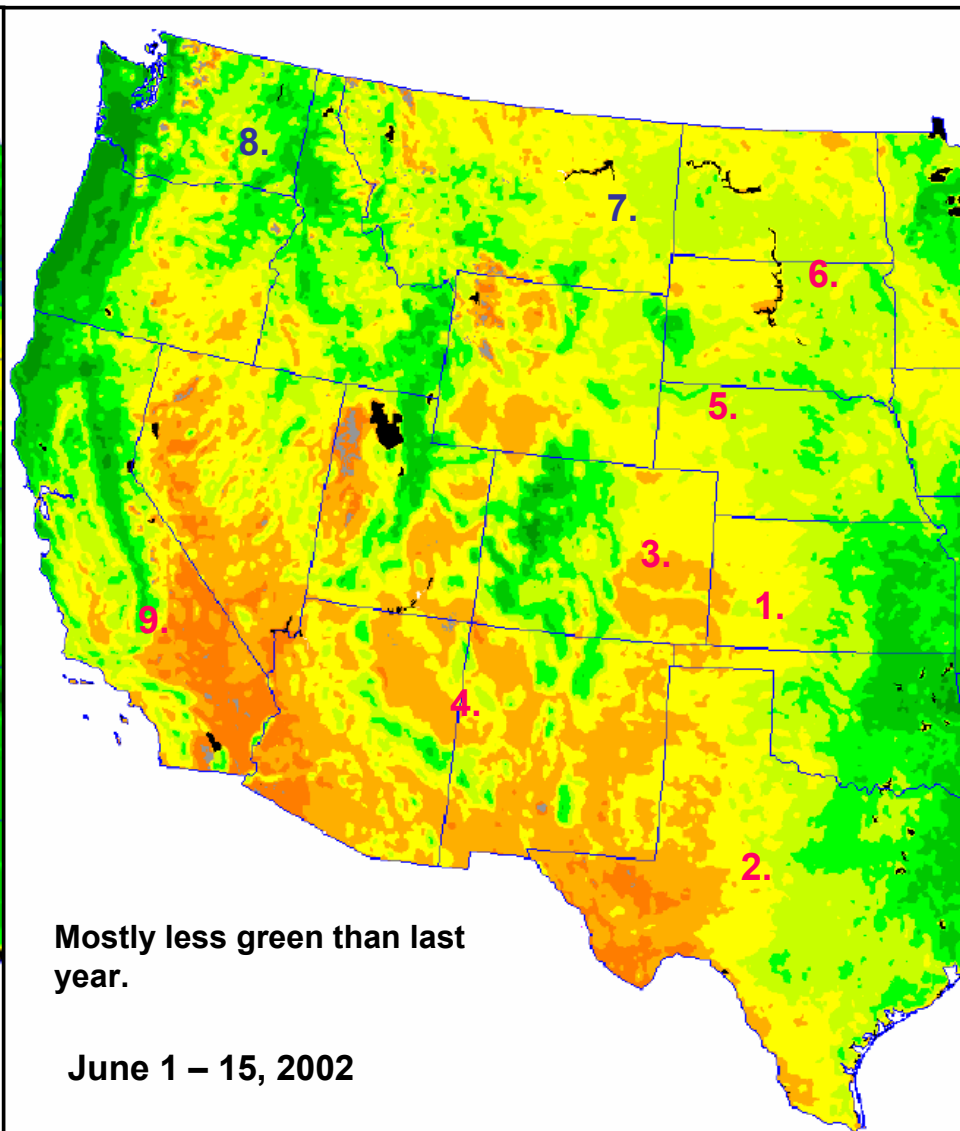
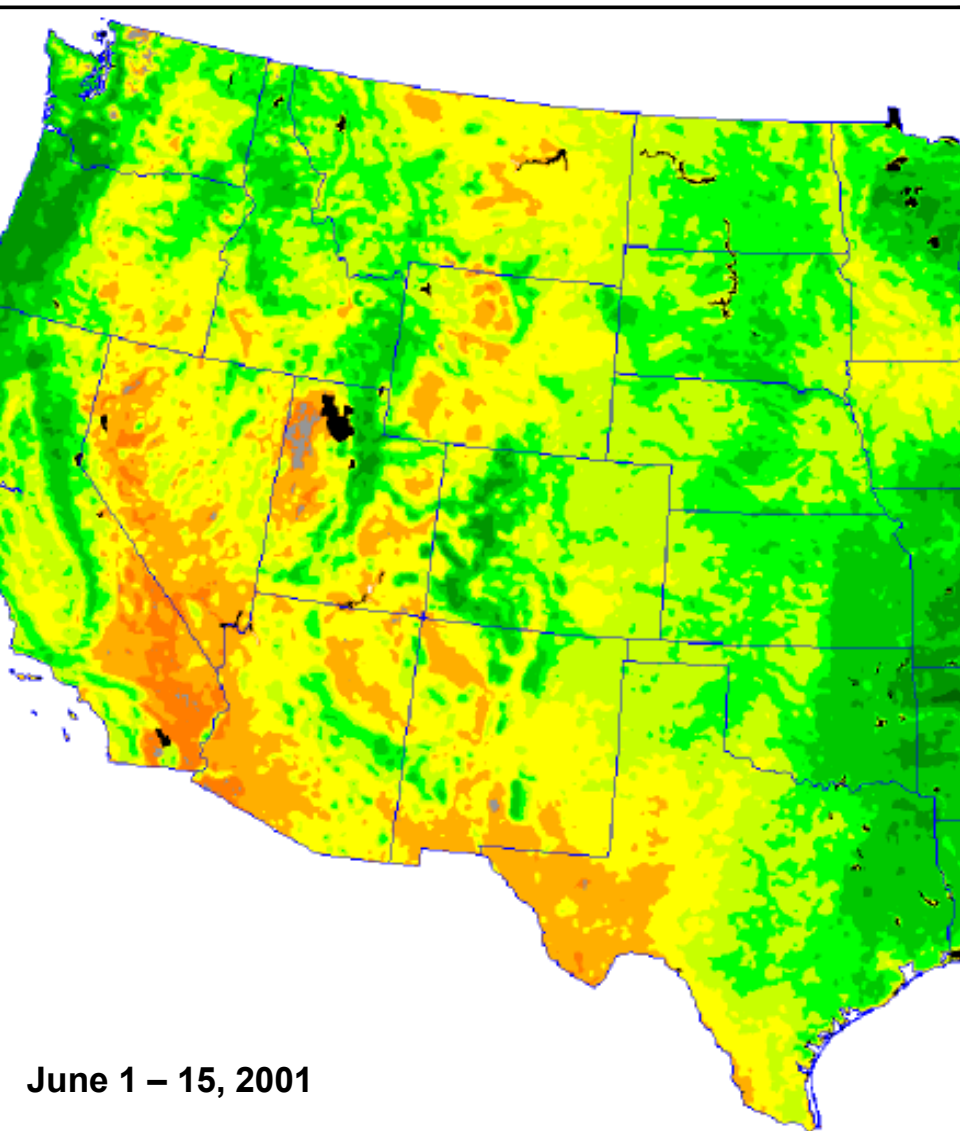
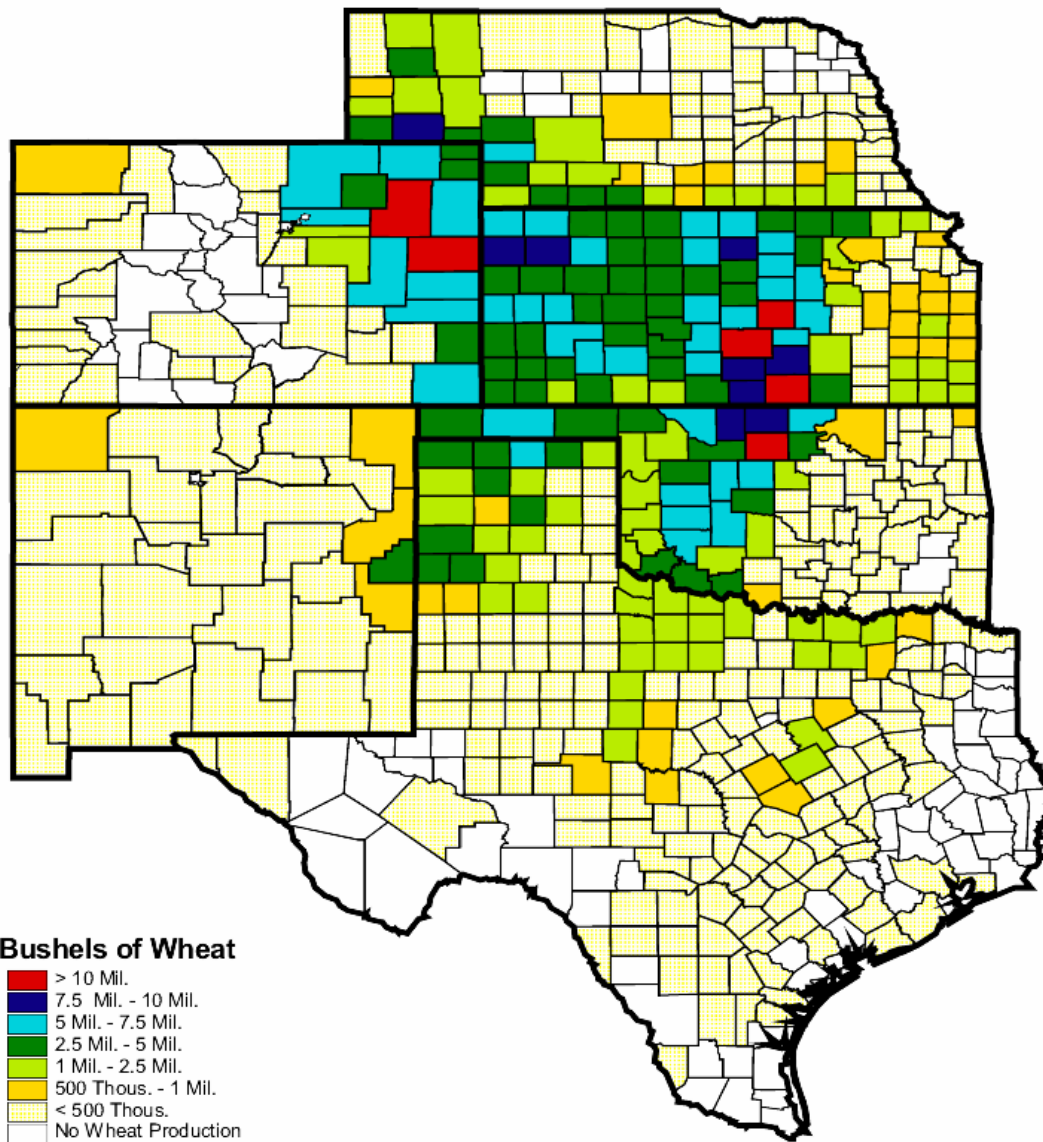


# Vegetative Index Map – June 2002



# Average County Wheat Production 1995 - 1999

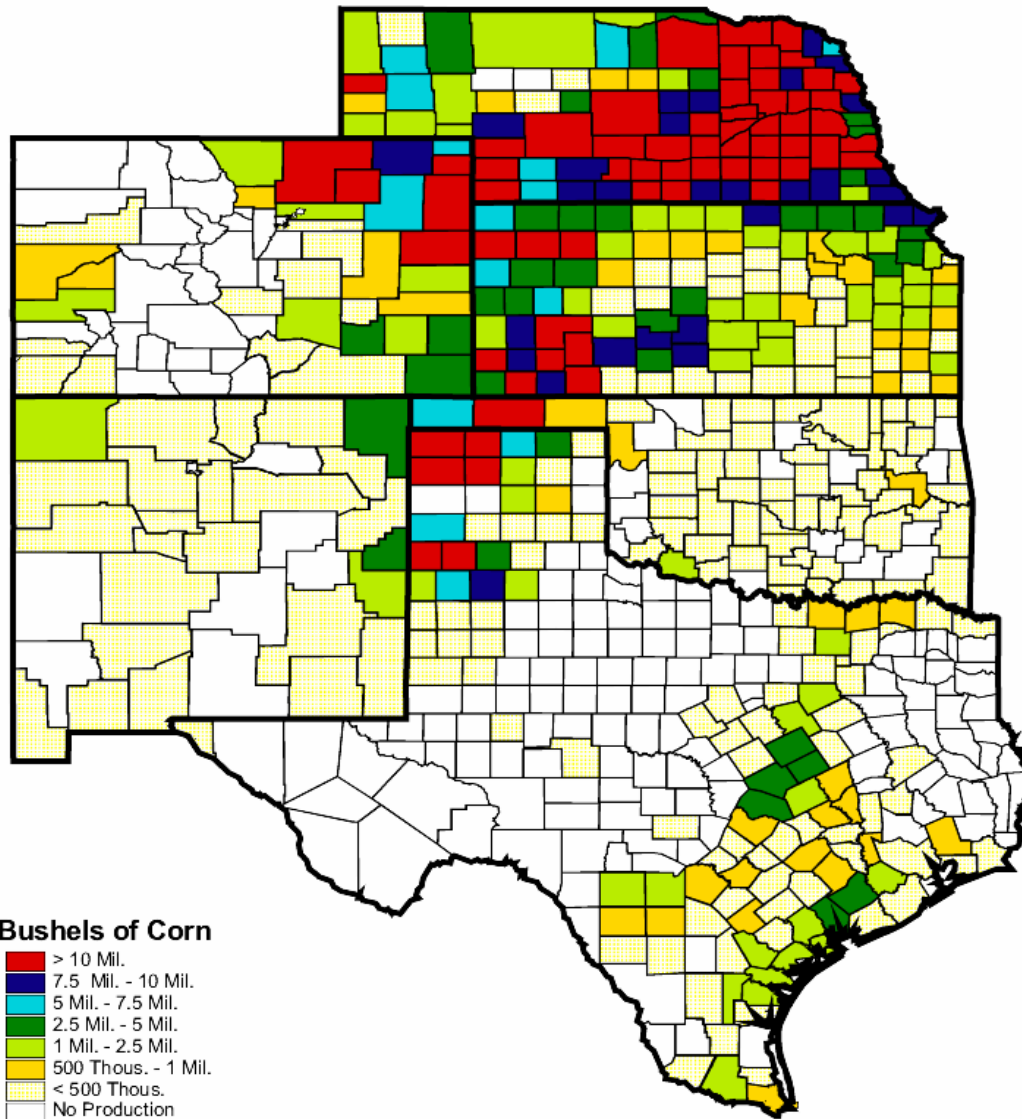


Data Source: USDA - NASS

GIS = Arcview 3.2



### Average County Corn Production 1995 - 1999



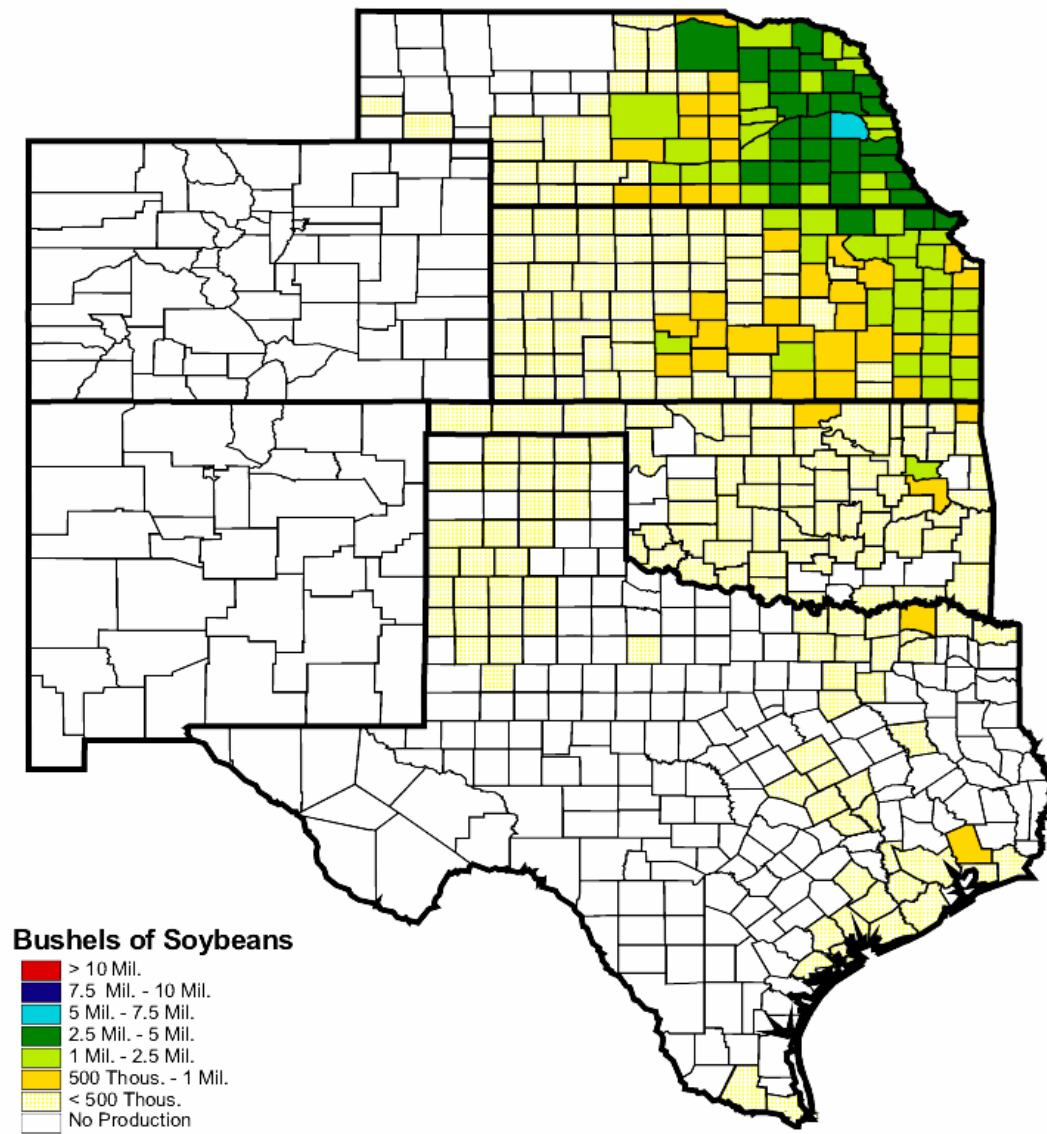
Data Source: USDA - NASS

GIS = Arcview 3.2



# Southern Plains Soybean Production

Average County Soybean Production 1995 - 1999

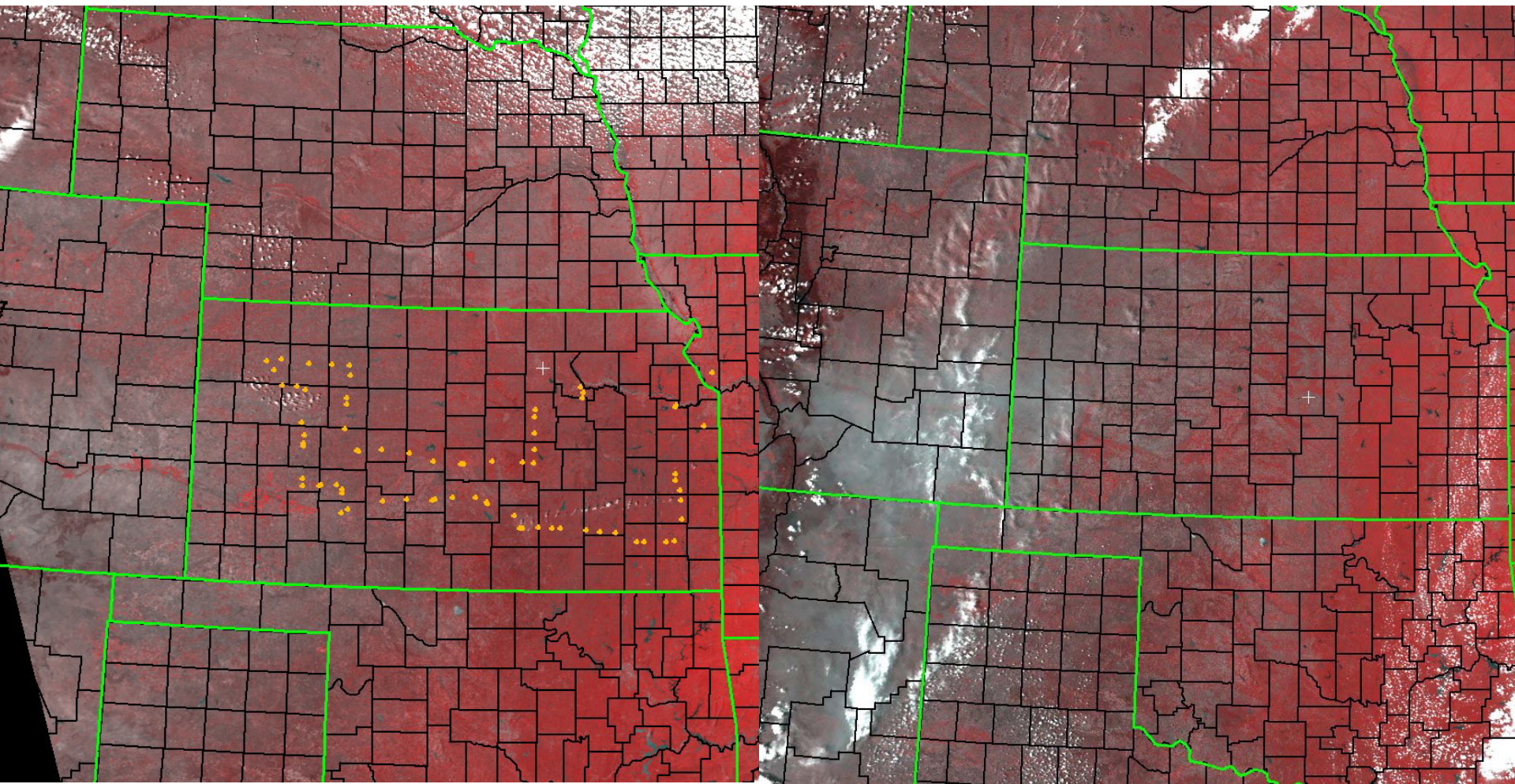


Data Source: USDA - NASS

GIS = Arcview 3.2



# NOAA 16 - Southern Plains



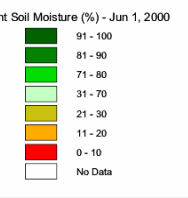
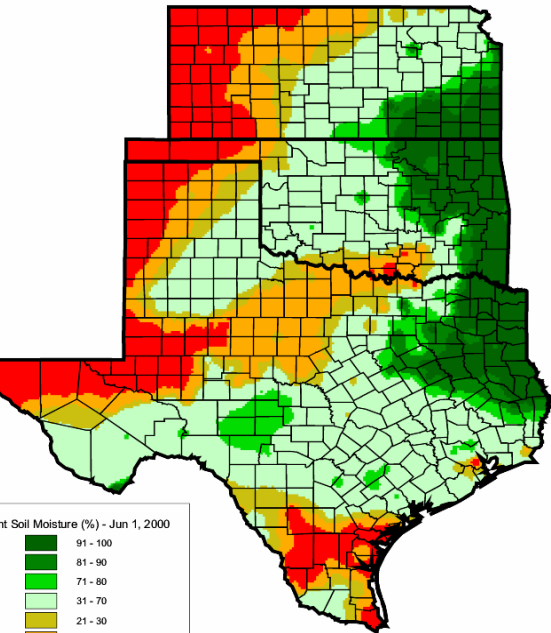
May 06, 2002

June 23, 2002

NOAA 16 Ch. 2, 1,1 = RGB

# Southern Plains

Soil Moisture - Percent Water Holding Capacity



June 24, 2000

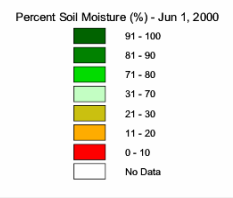
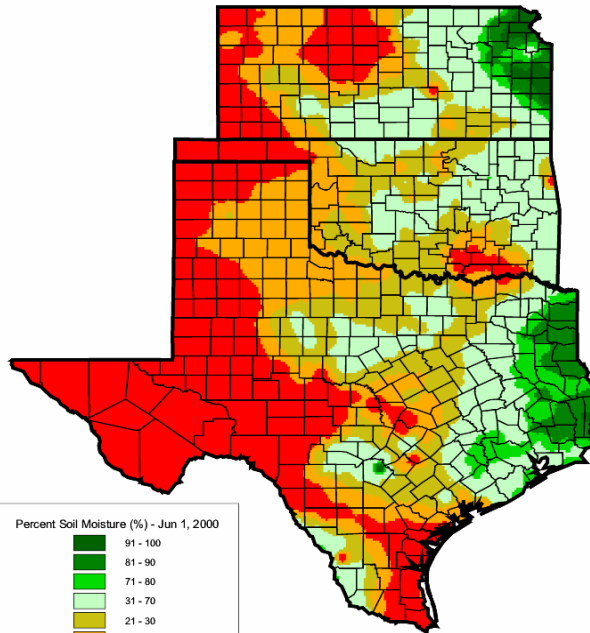
Data Source: U.S. Air Force Grid Cell System

GIS = ArcView 3.2



# Southern Plains

Soil Moisture - Percent Water Holding Capacity



June 24, 2001

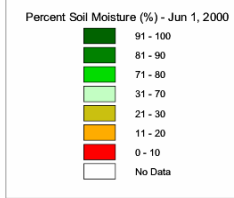
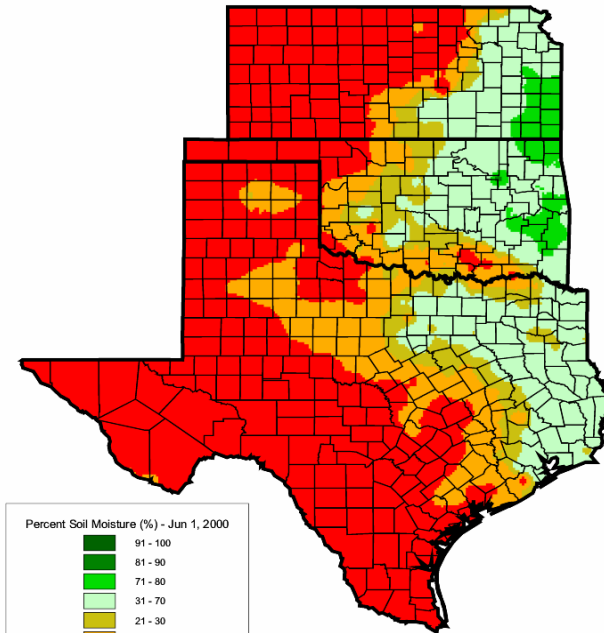
Data Source: U.S. Air Force Grid Cell System

GIS = ArcView 3.2



# Southern Plains

Soil Moisture - Percent Water Holding Capacity



June 24, 2002

Data Source: U.S. Air Force Grid Cell System

GIS = ArcView 3.2

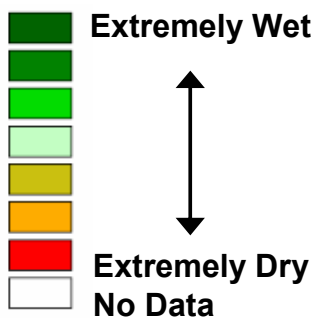


2000

2001

2002

## Soil Moisture Index

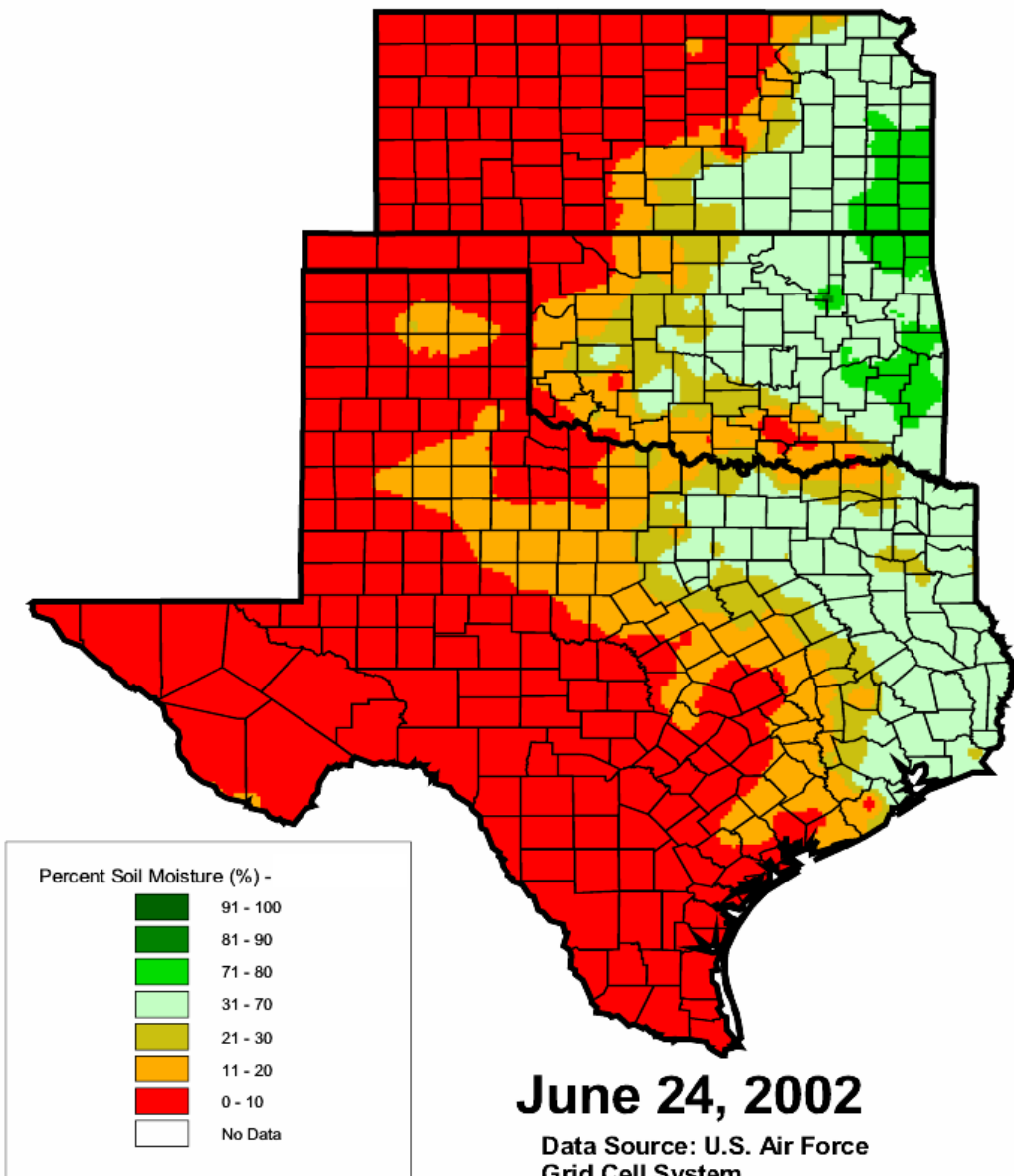


## Southern Plains Soil Moisture

Recent rainfall has helped stabilize crop conditions in South Central. However, a large portion of the state remains too dry. As of June 24, 2002, more of the region is too dry than has adequate to surplus soil moisture.

# Southern Plains

Soil Moisture - Percent Water Holding Capacity



**June 24, 2002**

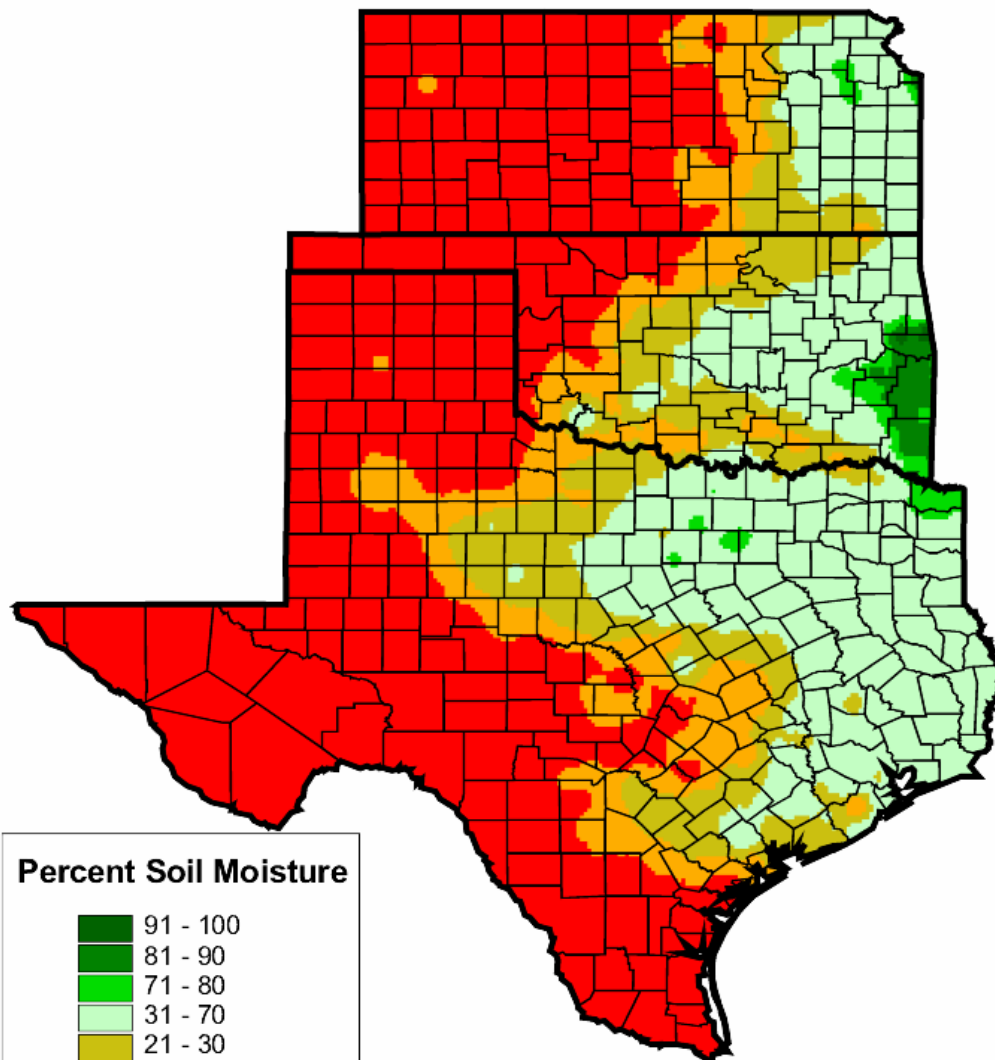
Data Source: U.S. Air Force  
Grid Cell System

GIS = ArcView 3.2

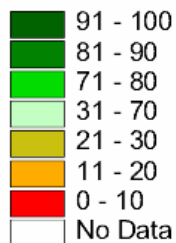


# Southern Plains

Soil Moisture - Percent Water Holding Capacity



## Percent Soil Moisture



**May 2, 2002**

Data Source: U.S. Air Force  
Grid Cell System

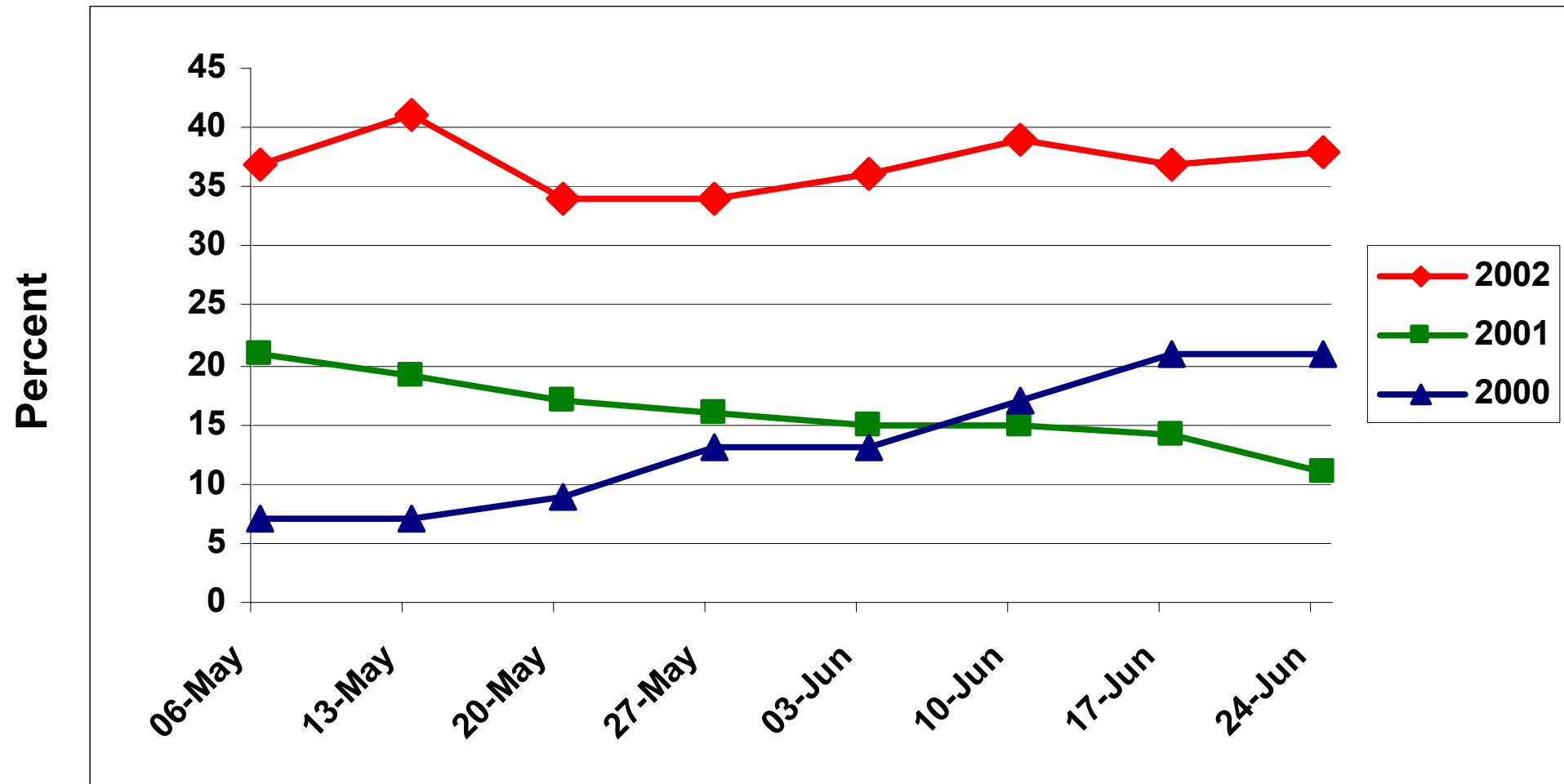
GIS = ArcView 3.2





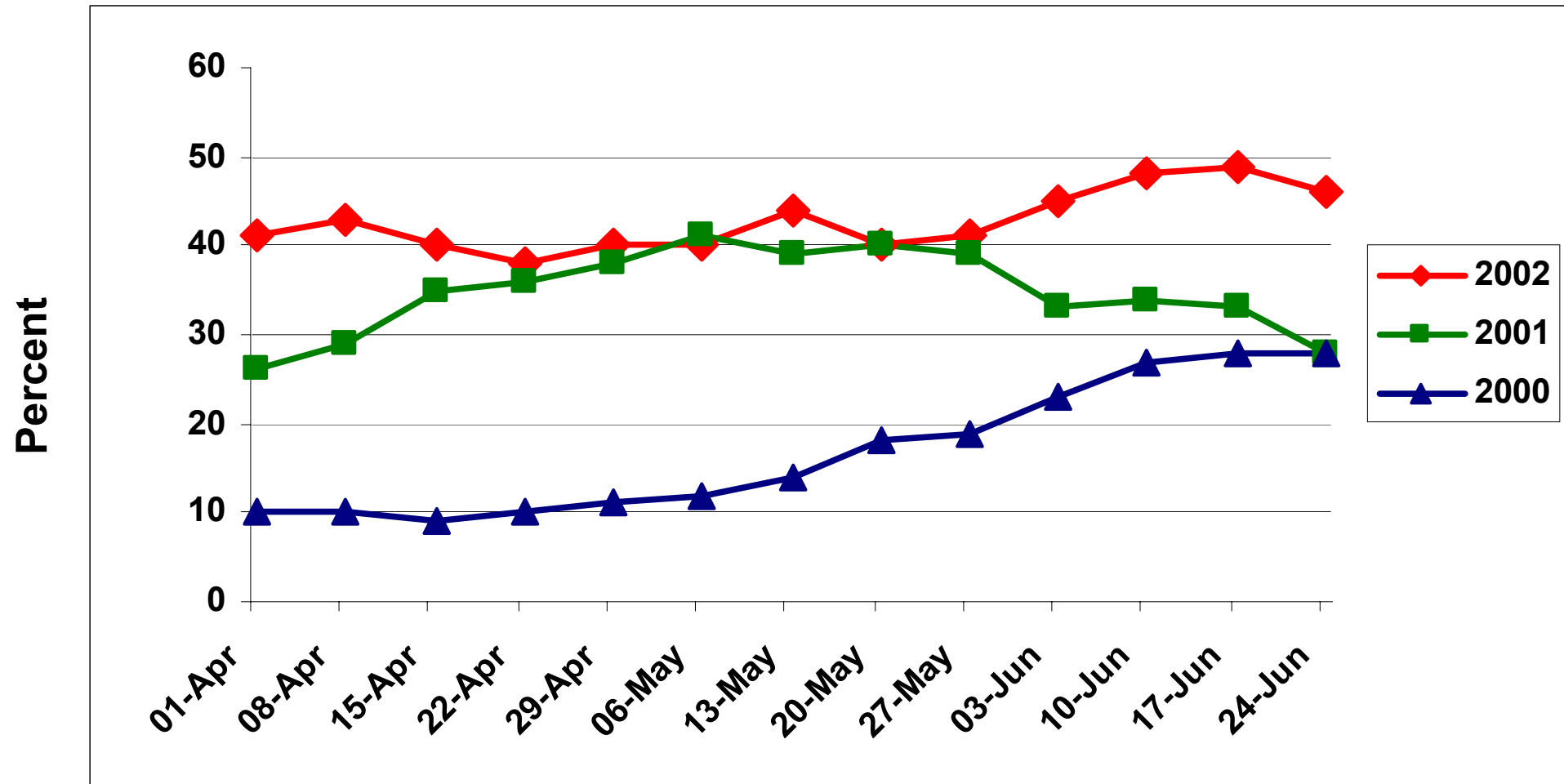
# Kansas Range & Pasture Condition

## Percent Rated Poor - Very Poor

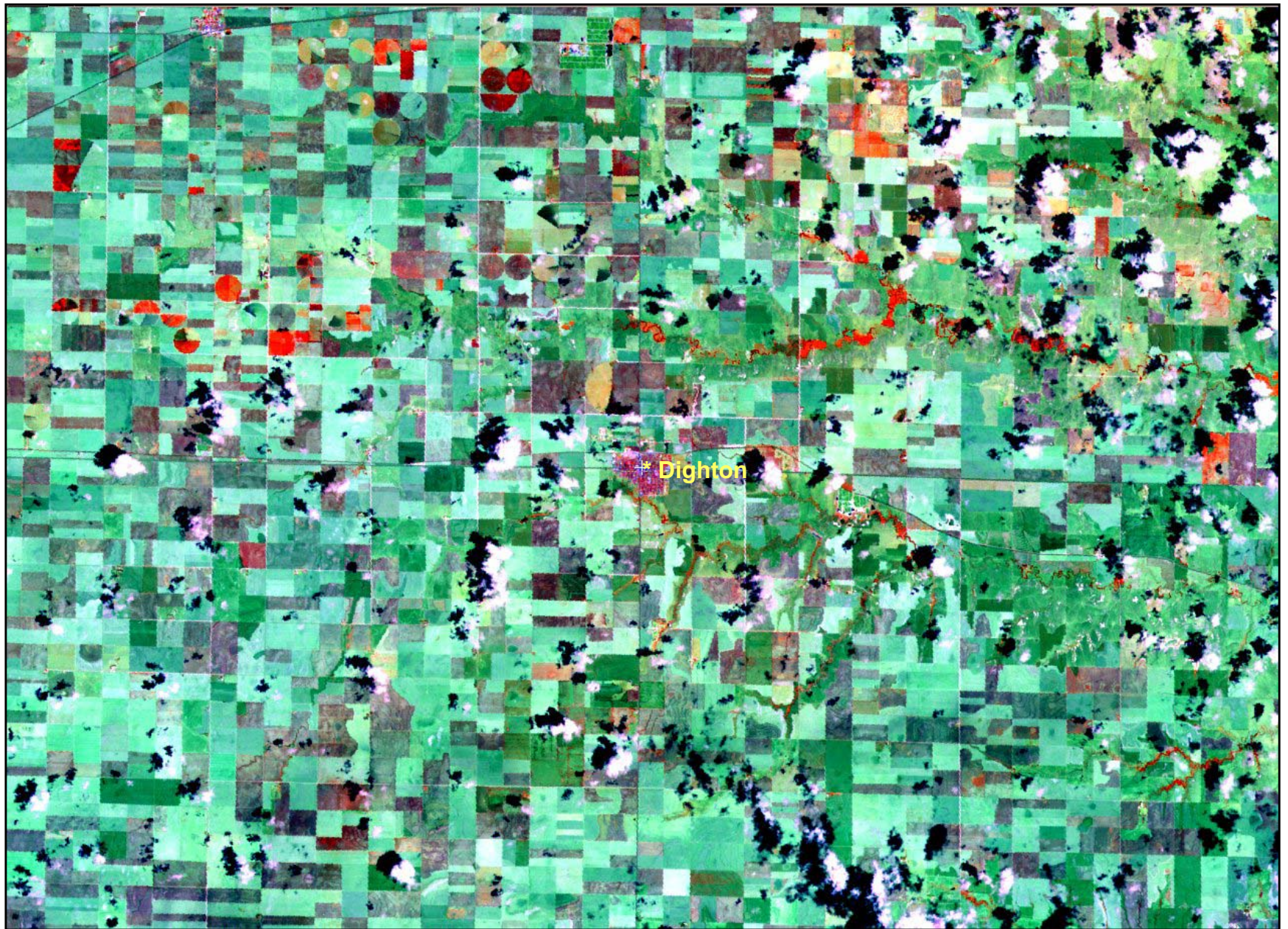


# Kansas Winter Wheat Condition

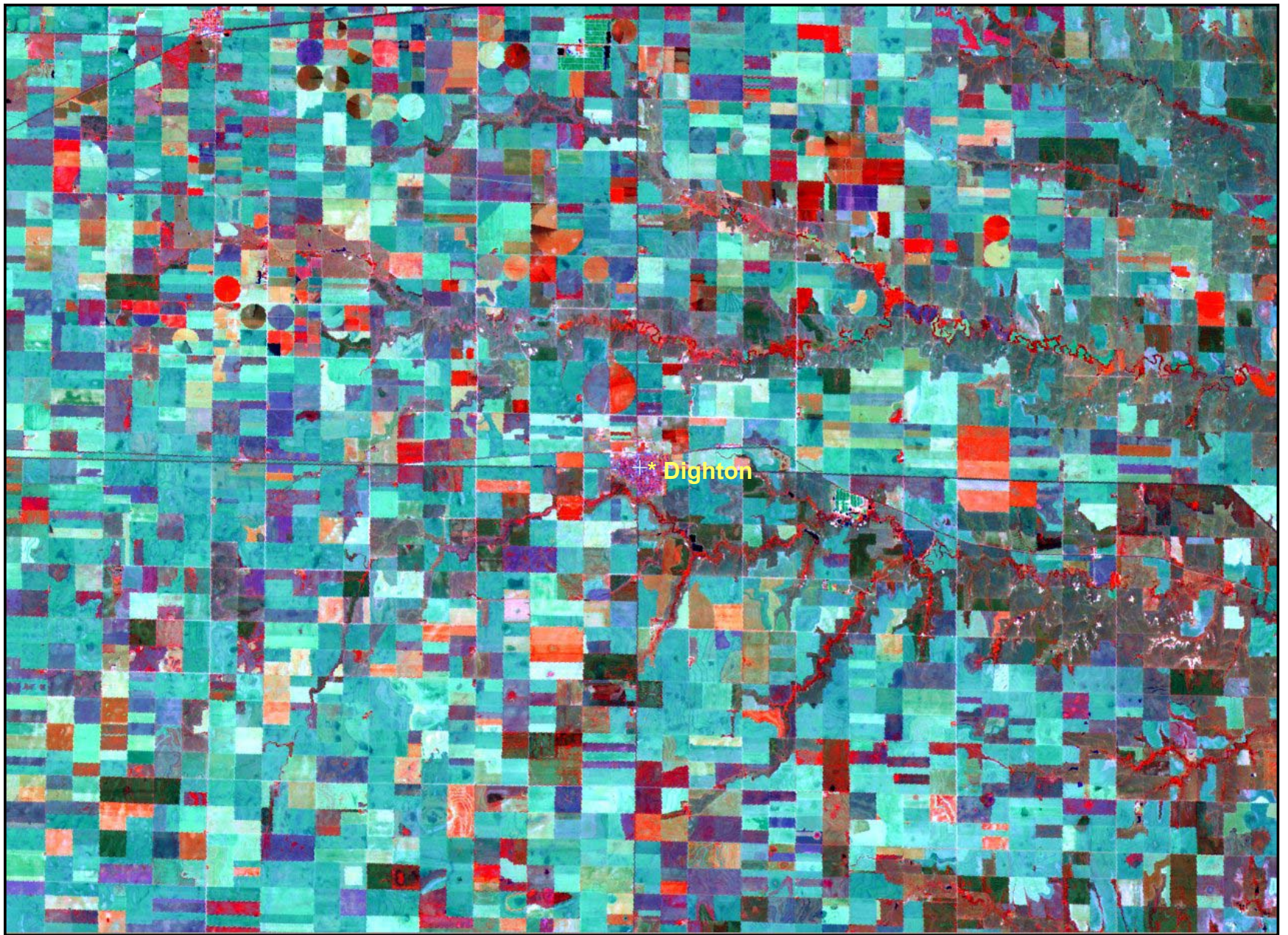
## Percent Rated Poor - Very Poor



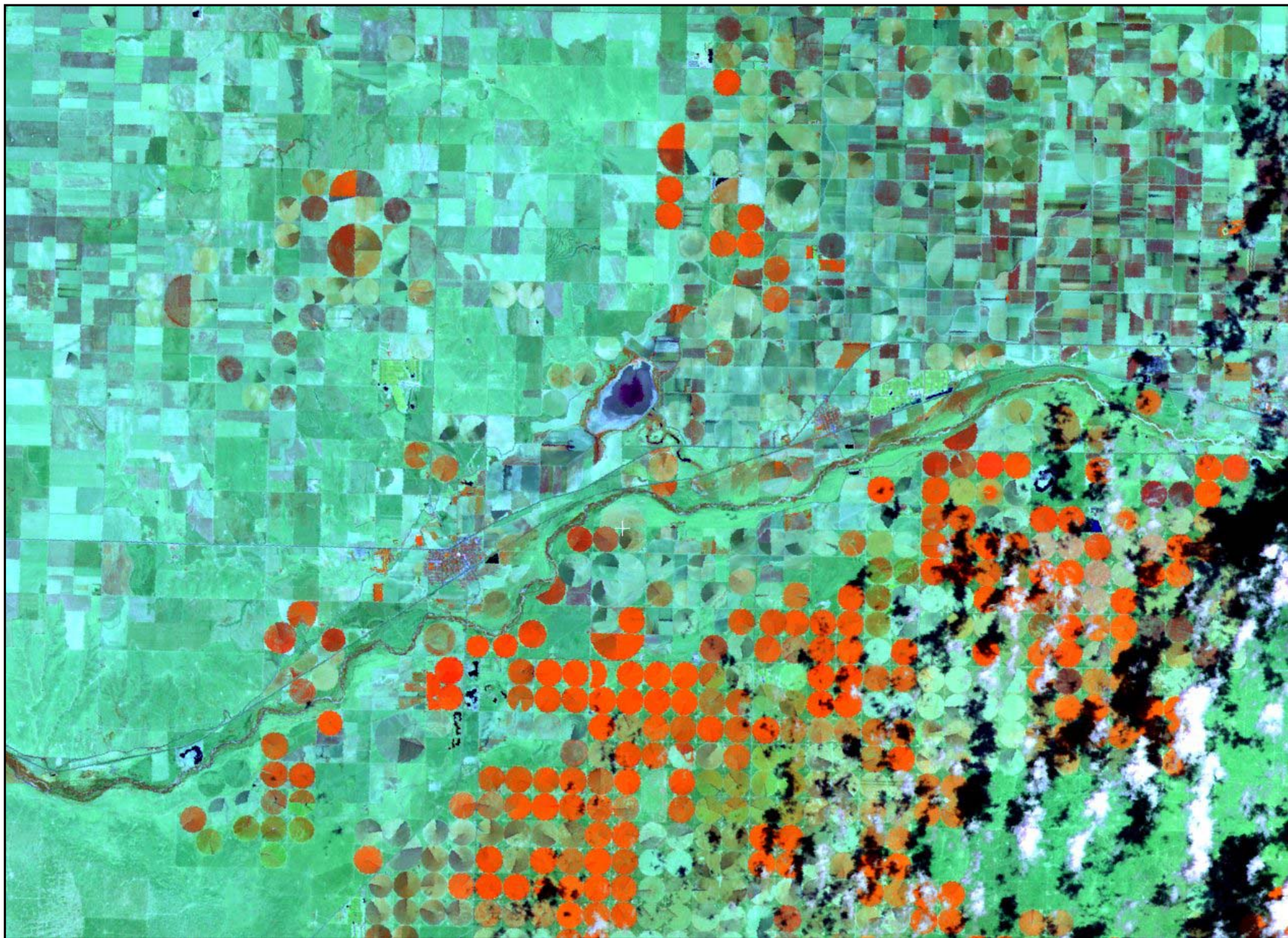
# Lane Co., Kansas



# Lane Co., Kansas



# Laklin, Kansas



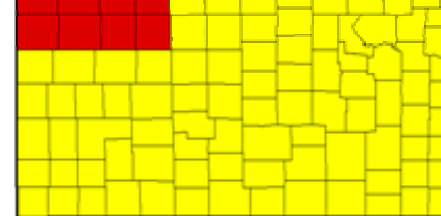
# Laklin, Kansas



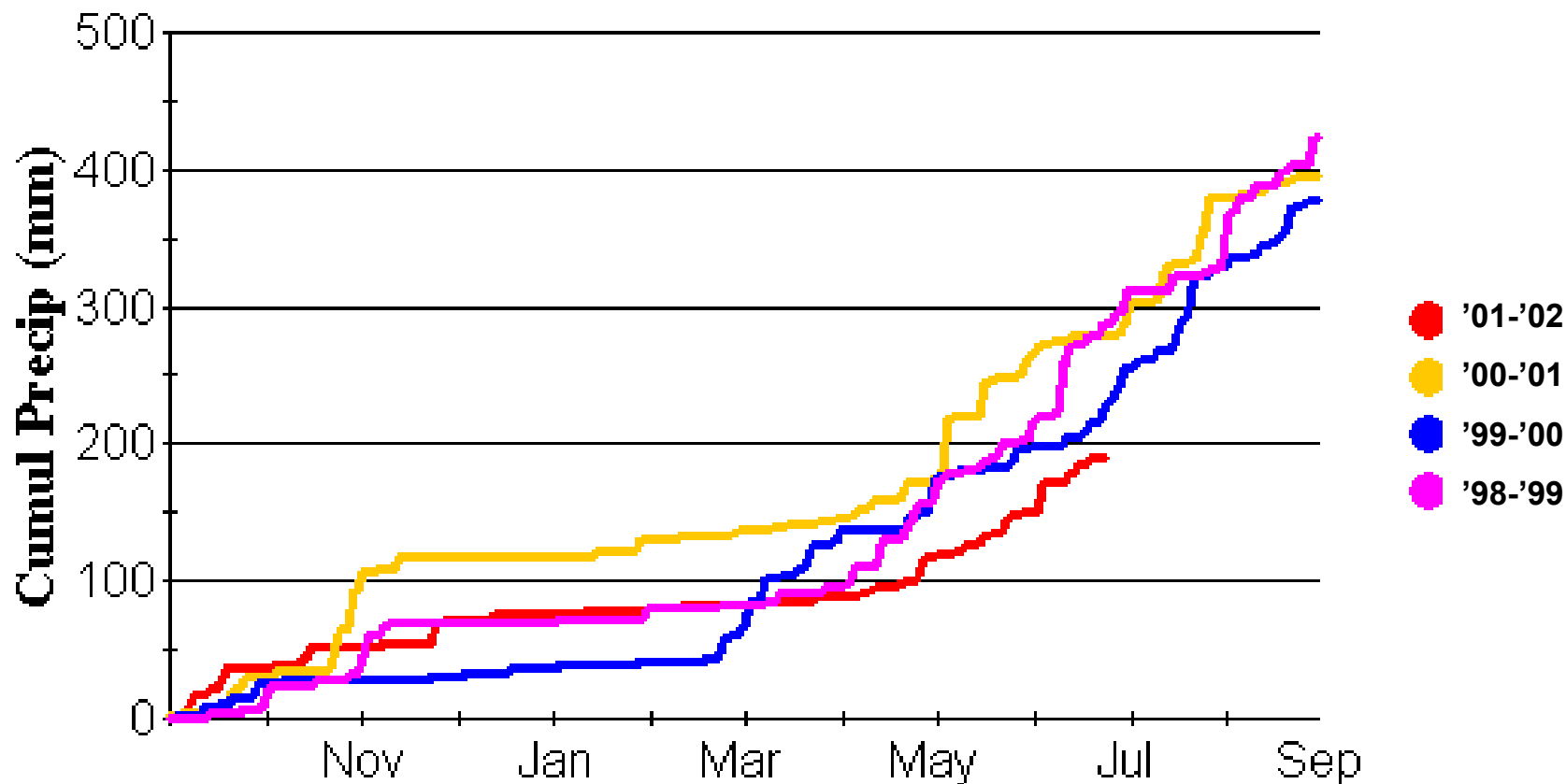
Landsat 7 TM – Ch. 4,5,3

June 15, 2001

# Northwest Kansas – Precipitation

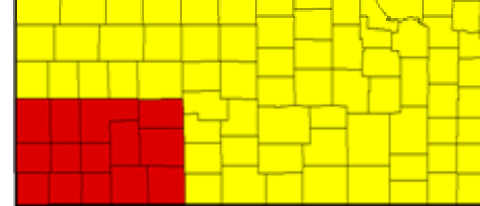


## Northwest Kansas

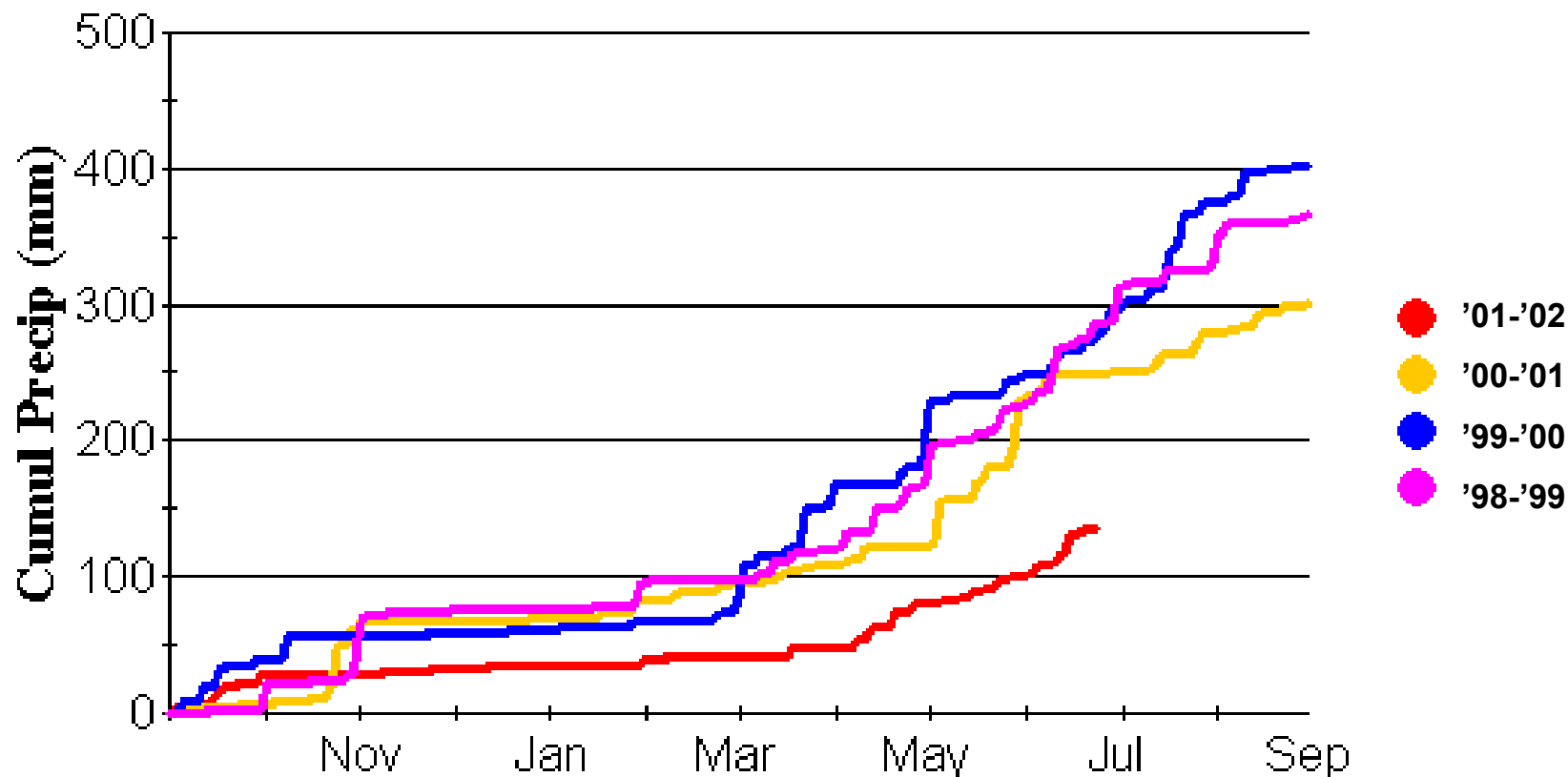


USDA-FAS-PECAD

# Southwest Kansas – Precipitation



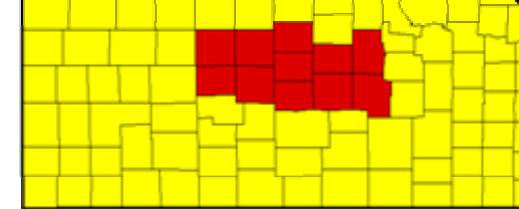
## Southwestern Kansas



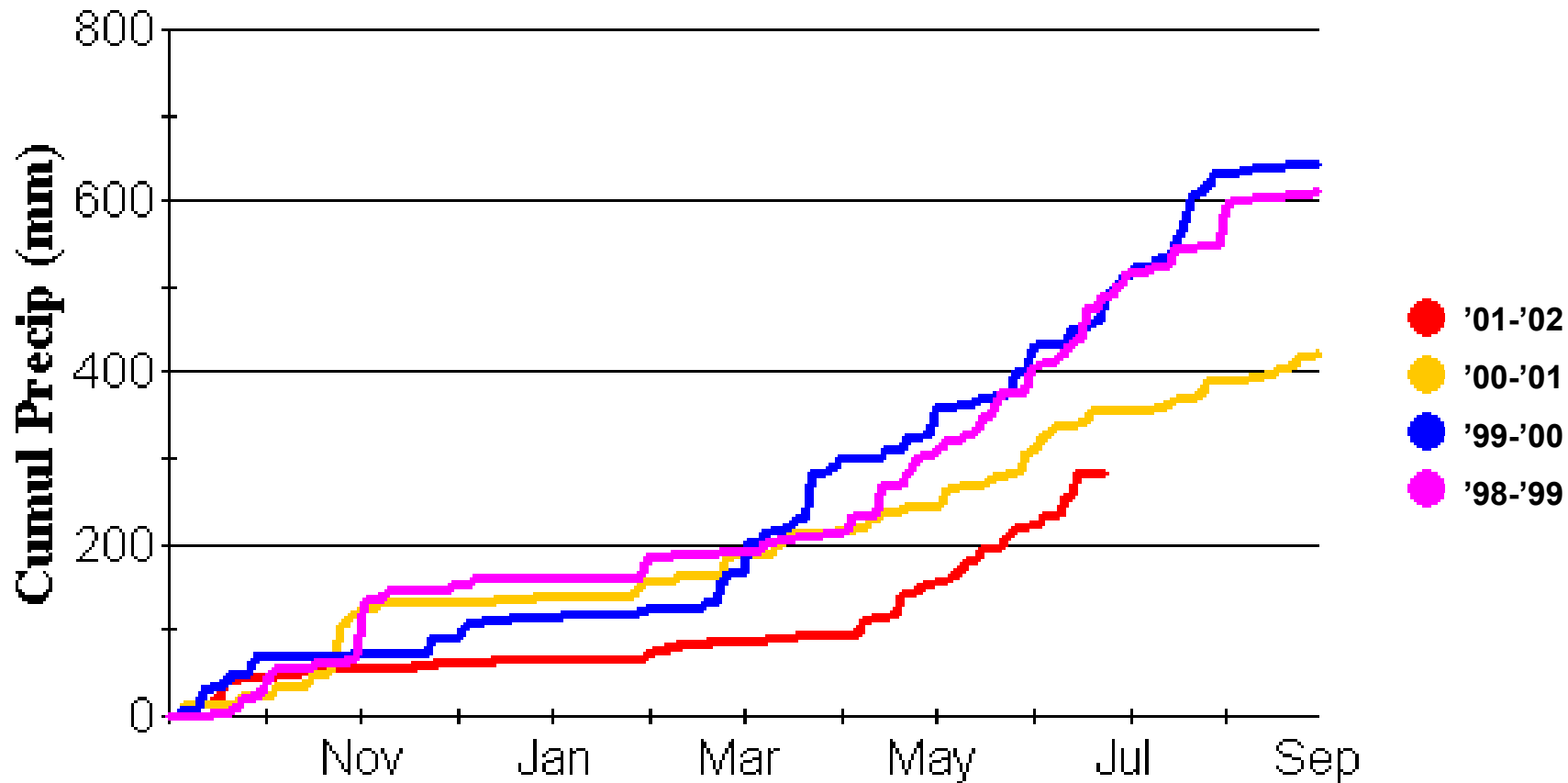
USDA-FAS-PECAD



# Central Kansas – Precipitation

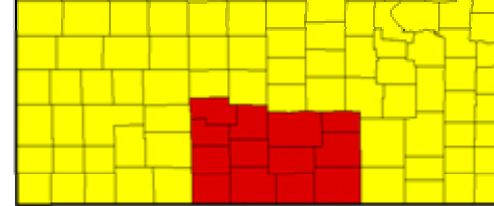


Central Kansas

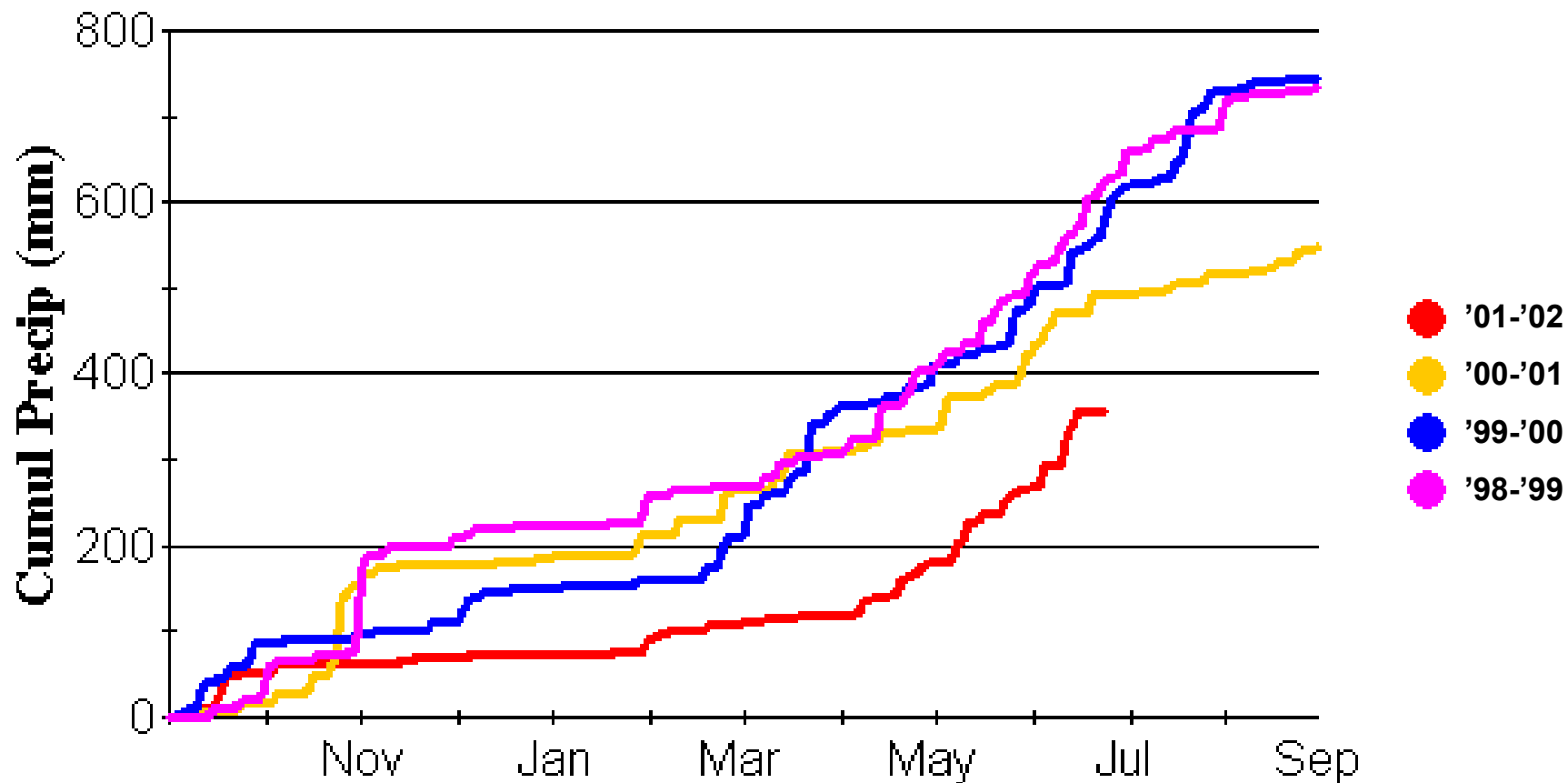


USDA-FAS-PECAD

# South-Central Kansas -Precipitation



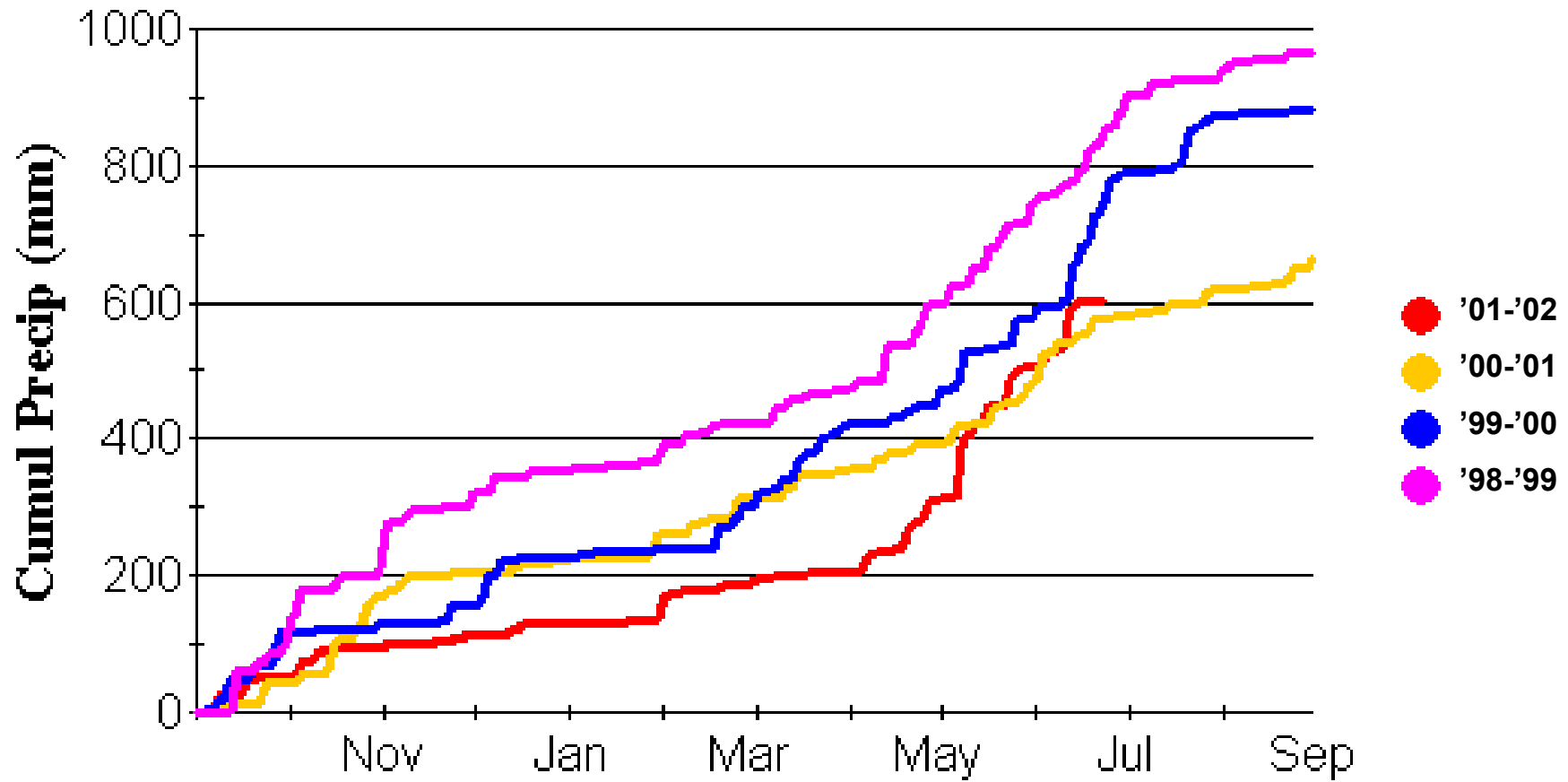
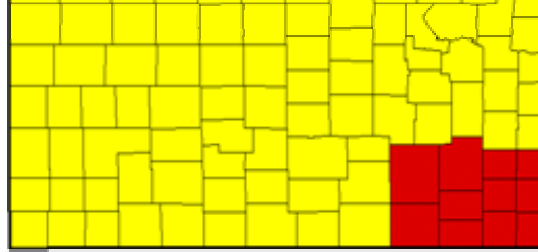
## South-Central Kansas



USDA-FAS-PECAD

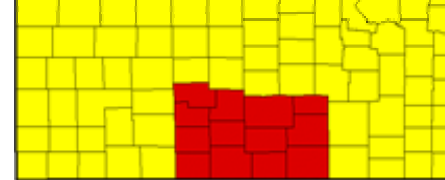
# Southeast Kansas -Precipitation

Southeast Kansas

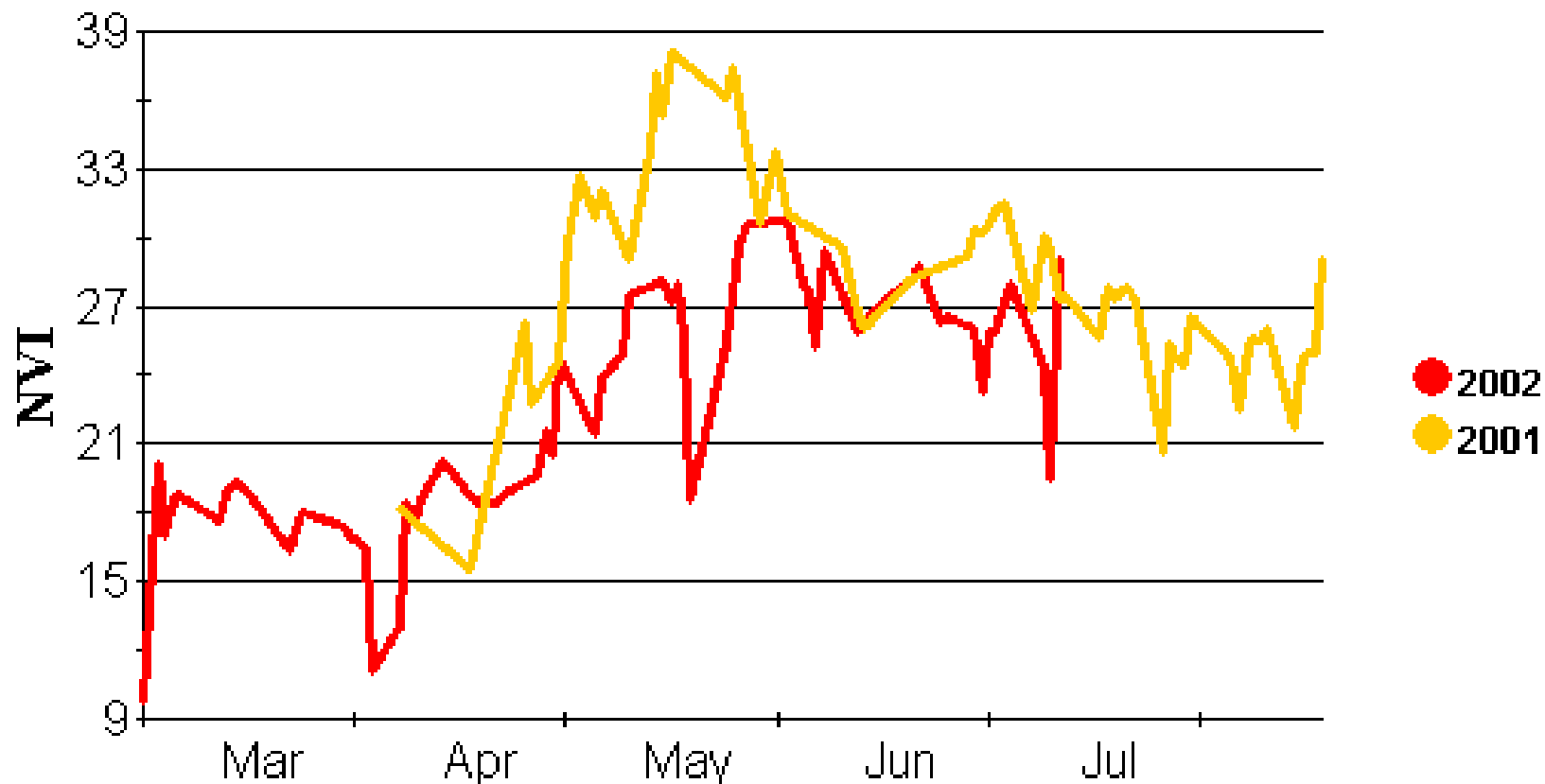


USDA-FAS-PECAD

# South Central Kansas – Vegetation



## South-Central Kansas

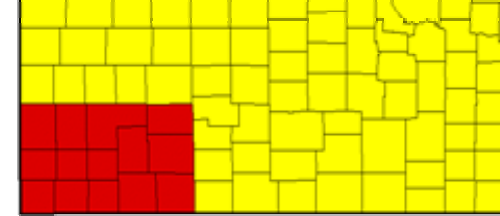


USDA-FAS-PECAD

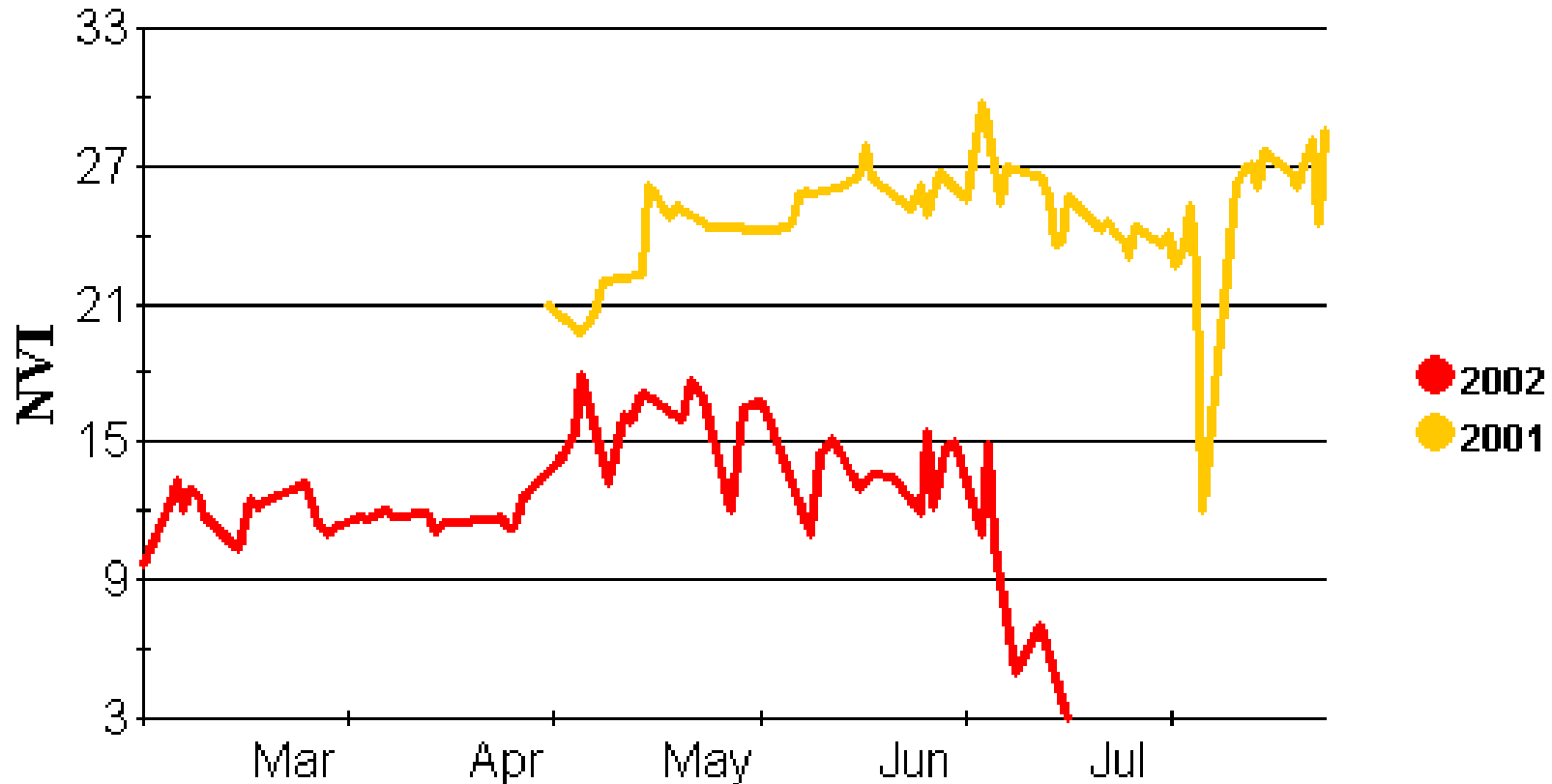
Source = NOAA 16  
EVI = Ch.2 - Ch. 1

Data through June 23, 2002.

# Southwest Kansas – Vegetation

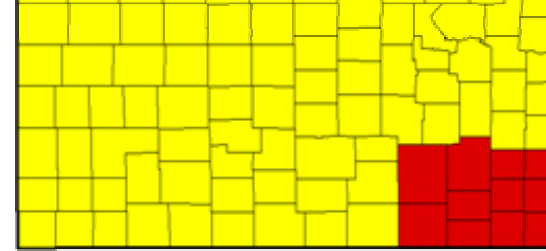


## Southwestern Kansas

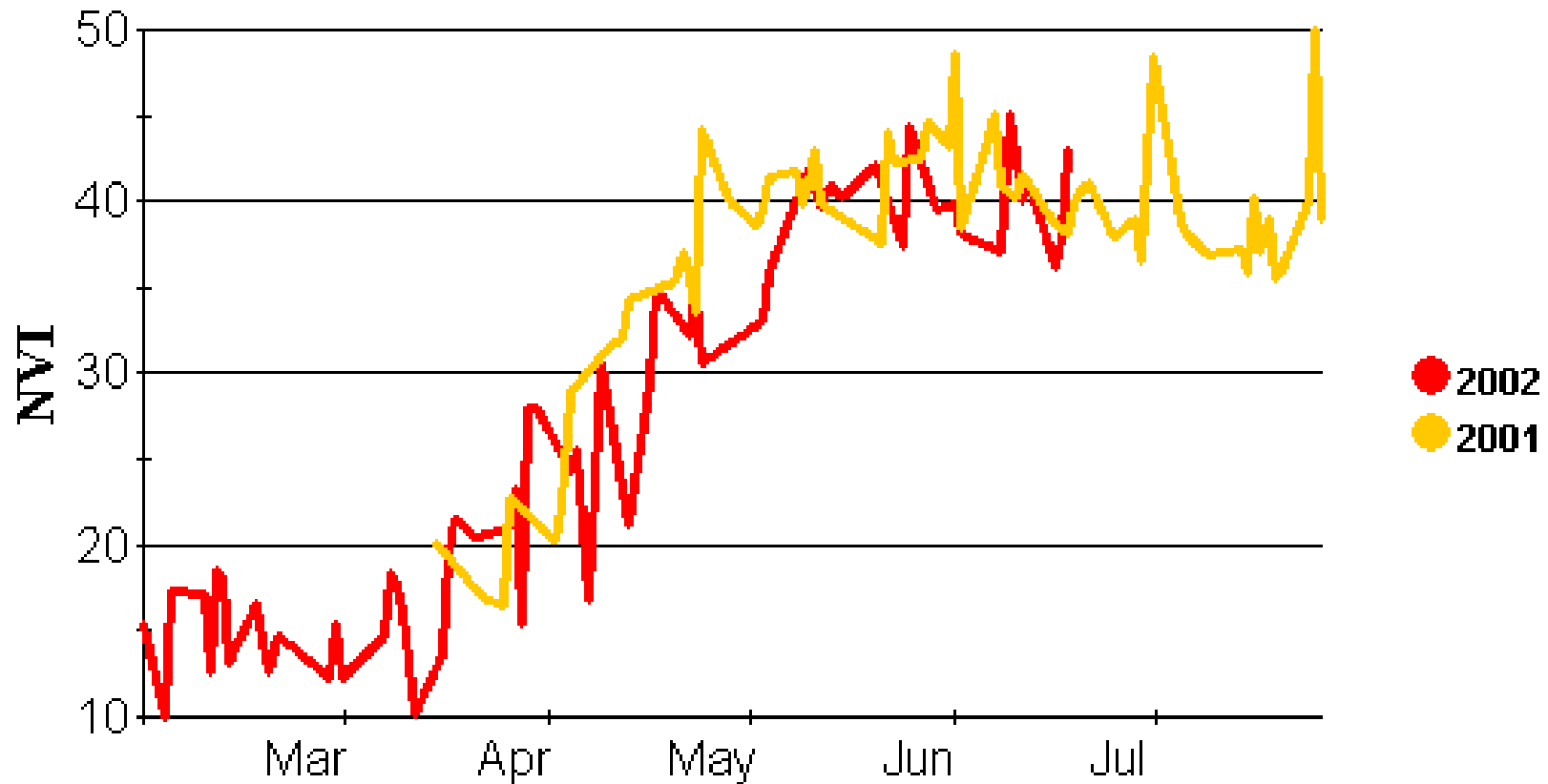


USDA-FAS-PECAD

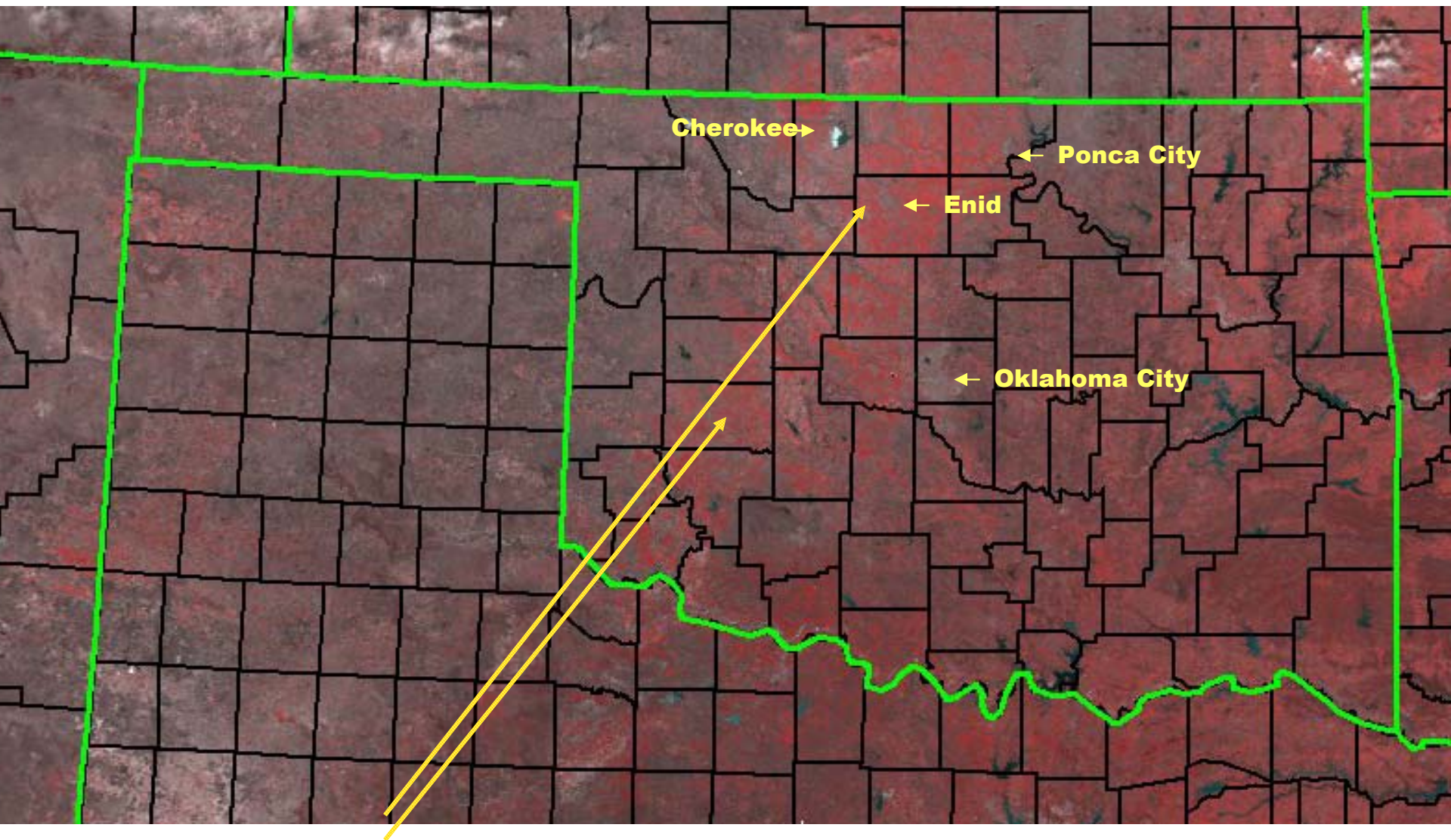
# Southeast Kansas – Vegetation



## Southeastern Kansas



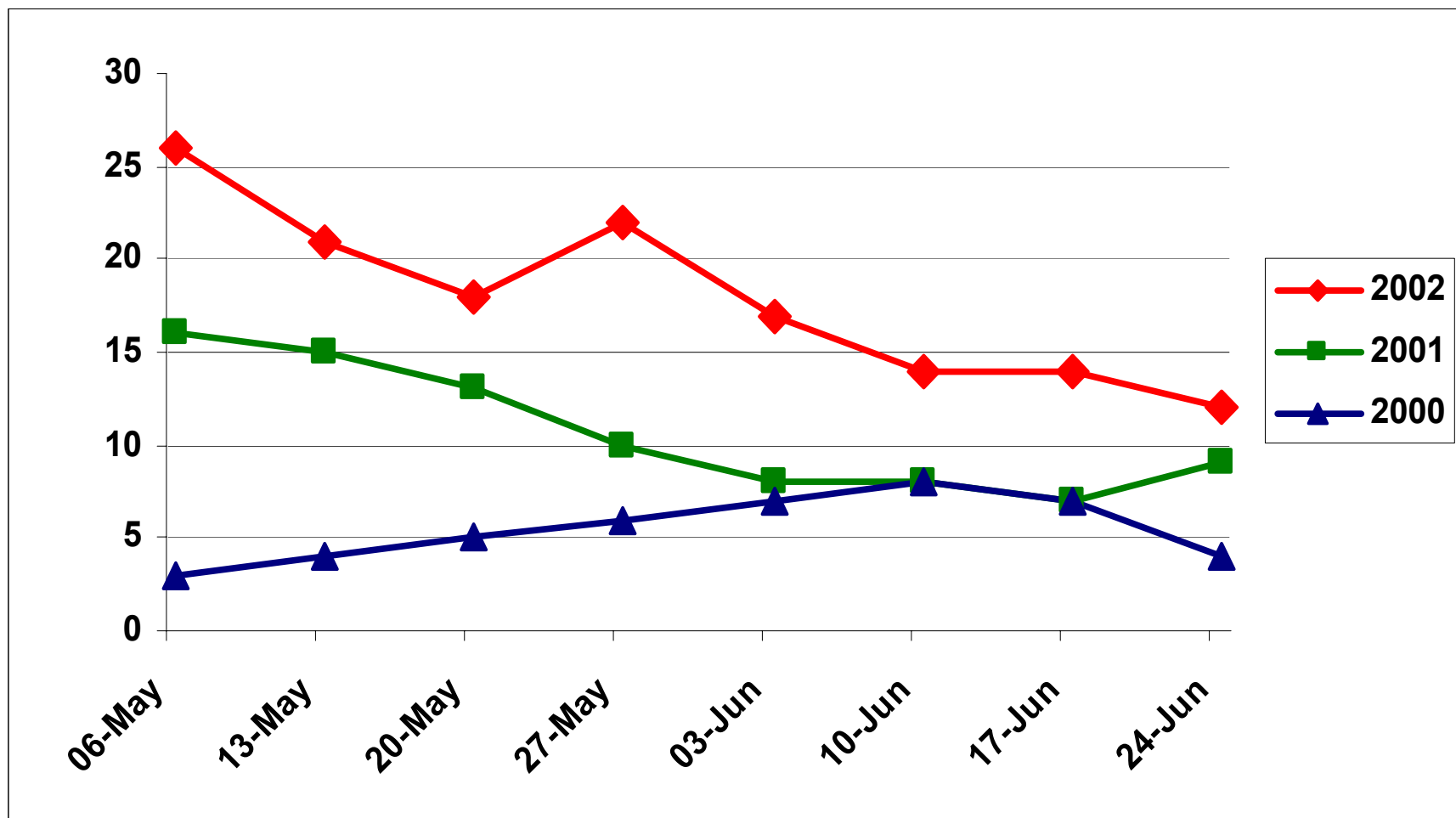
USDA-FAS-PECAD



Major Wheat Growing Area,  
The Red Is Predominately  
Winter Wheat.

# Oklahoma Range & Pasture Condition

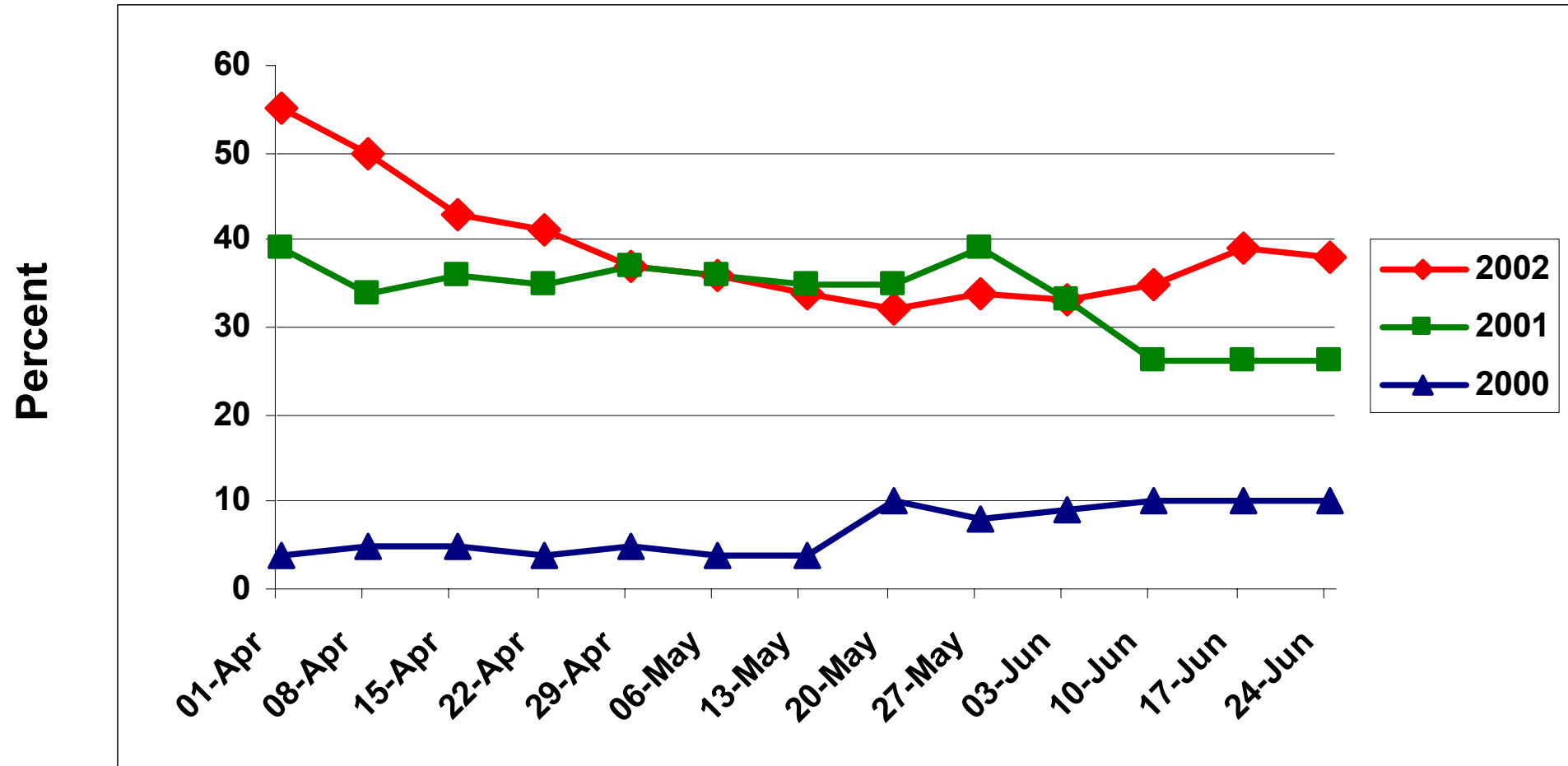
## Percent Rated Poor - Very Poor



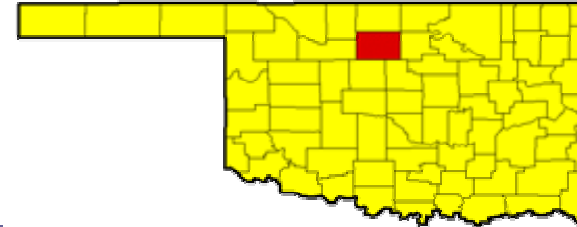


# Oklahoma Winter Wheat Condition

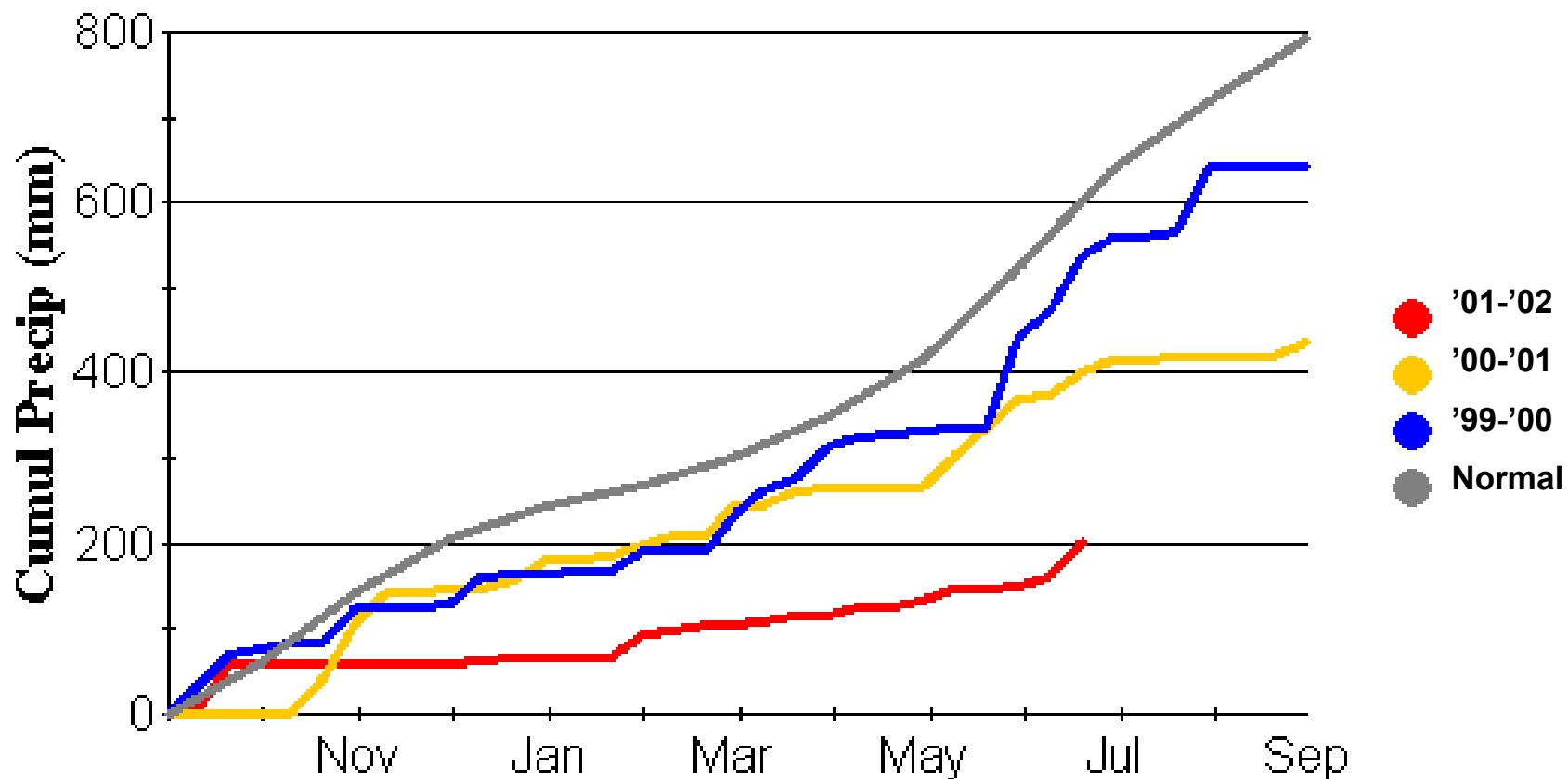
## Percent Rated Poor - Very Poor



# Enid, Oklahoma – Precipitation

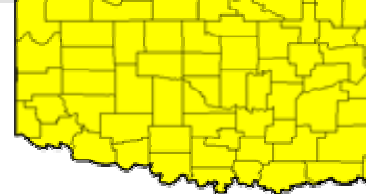


STATION:99999END ENID/VANCE AFB

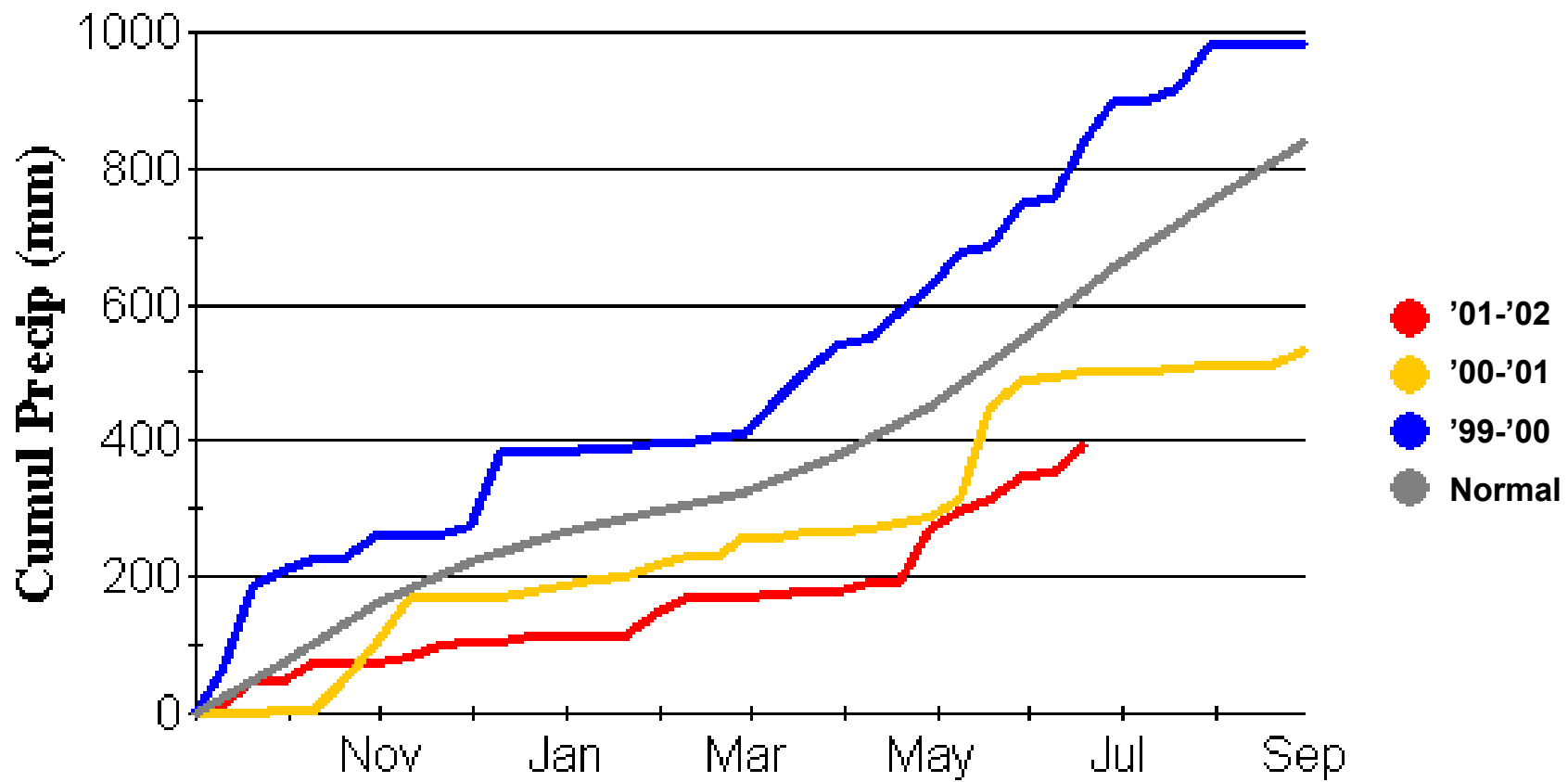


USDA-FAS-PECAD

# Ponca City, Oklahoma – Precipitation

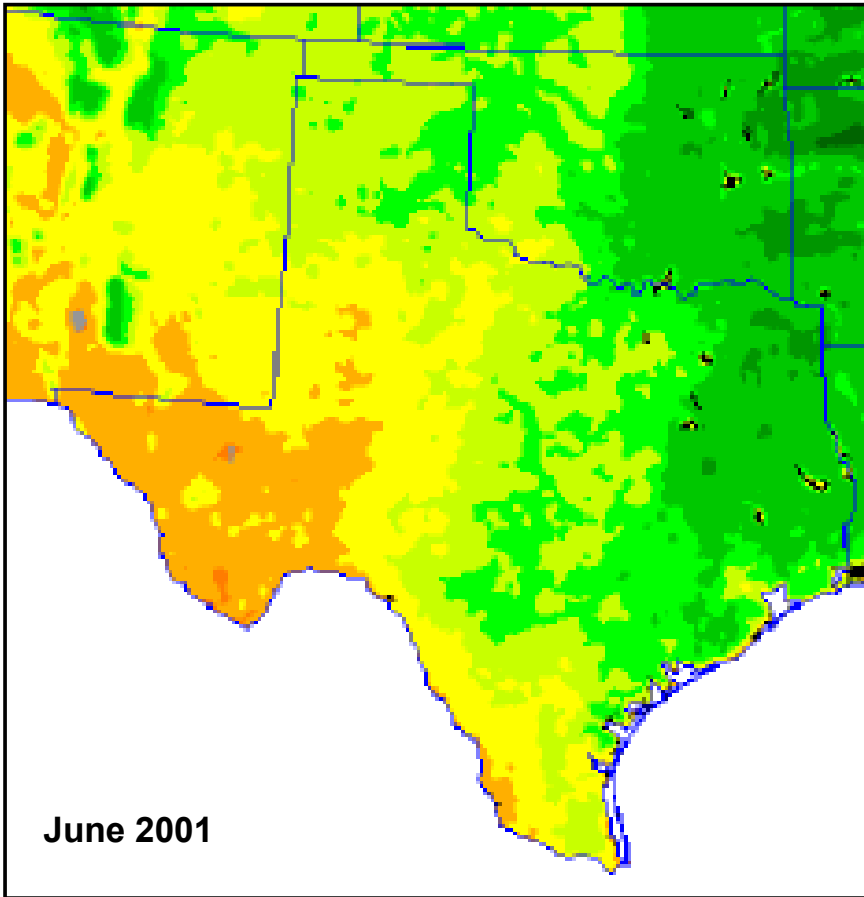


STATION:99999PNC PONCA CITY MUNI

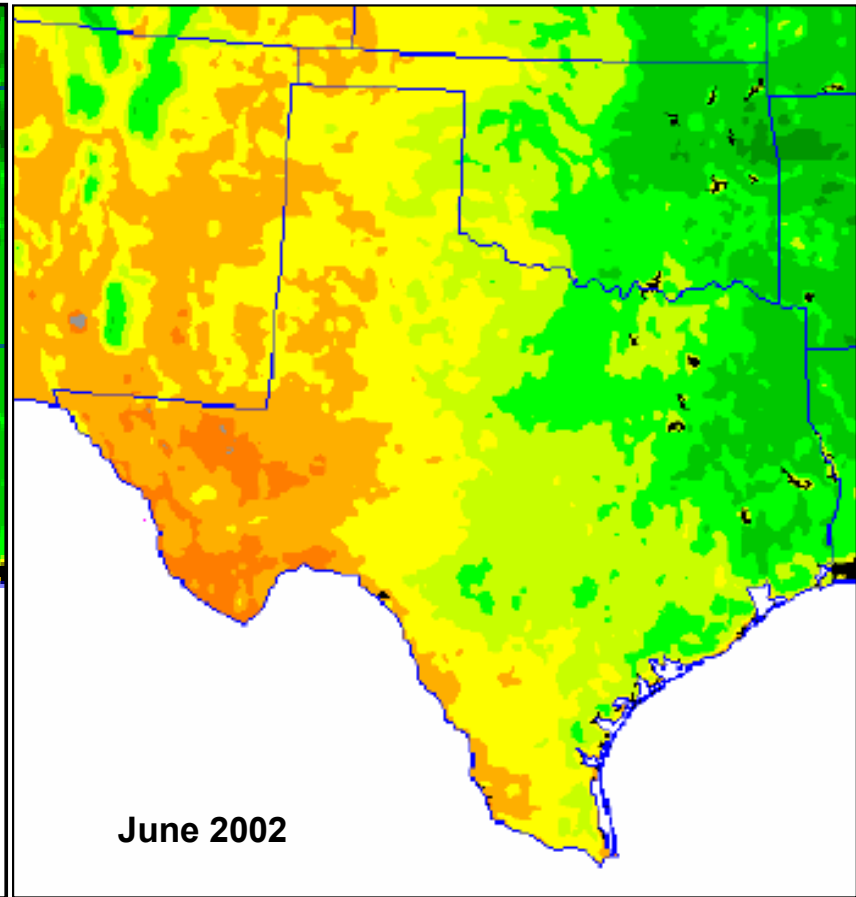


USDA-FAS-PECAD

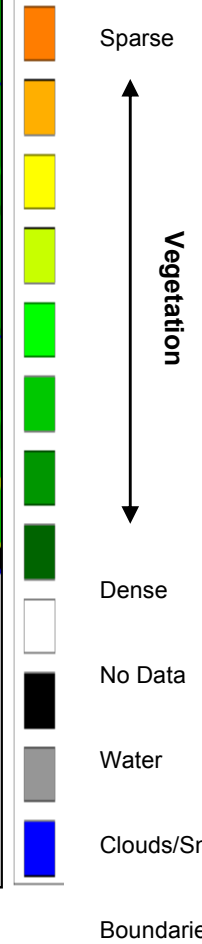
# Texas - Vegetation Comparison



NDVI Composite – June 1 - 15, 2001  
NOAA 16 Polar Orbiter

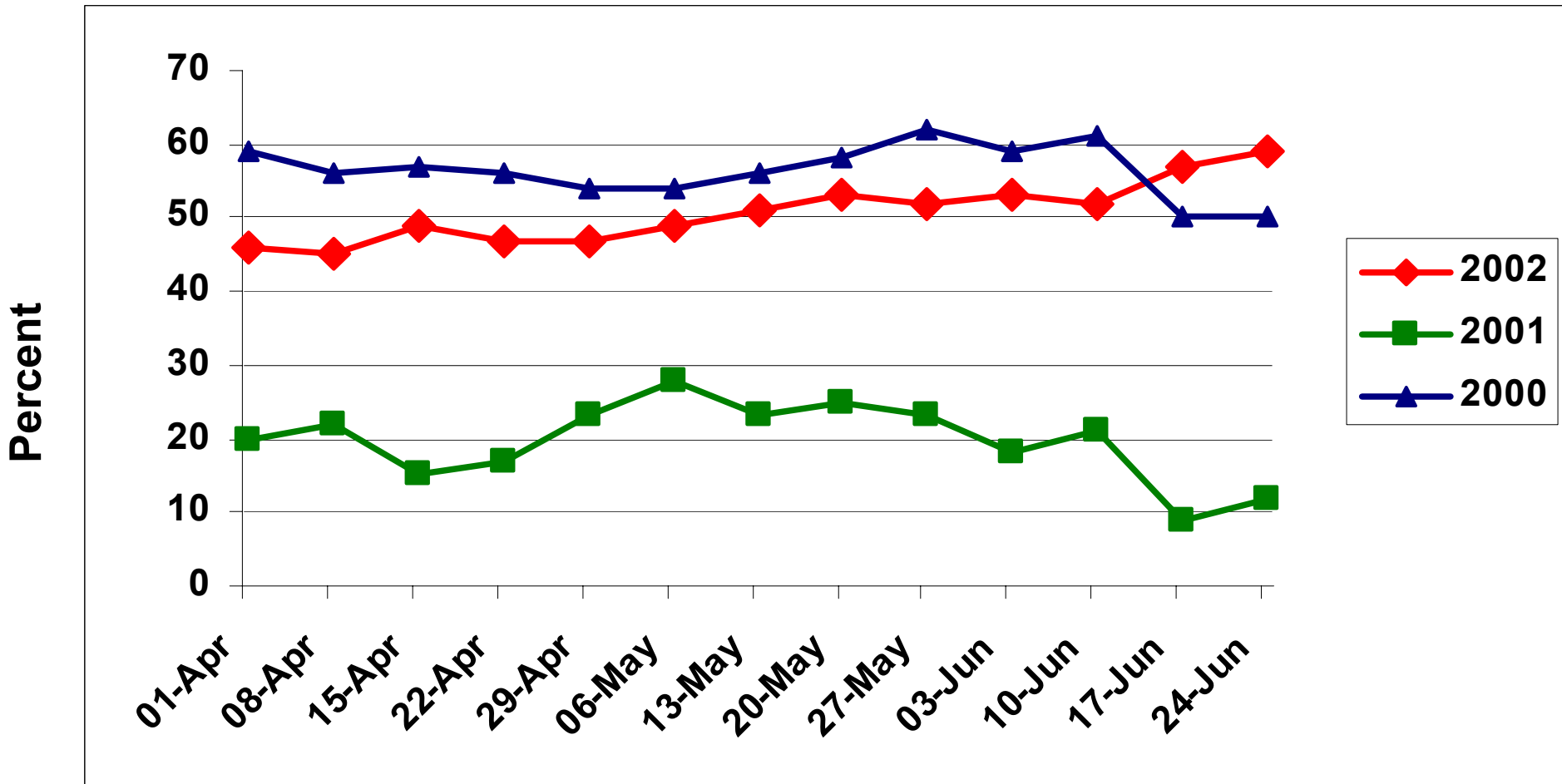


NDVI Composite – June 1 - 15, 2002  
NOAA 16 Polar Orbiter



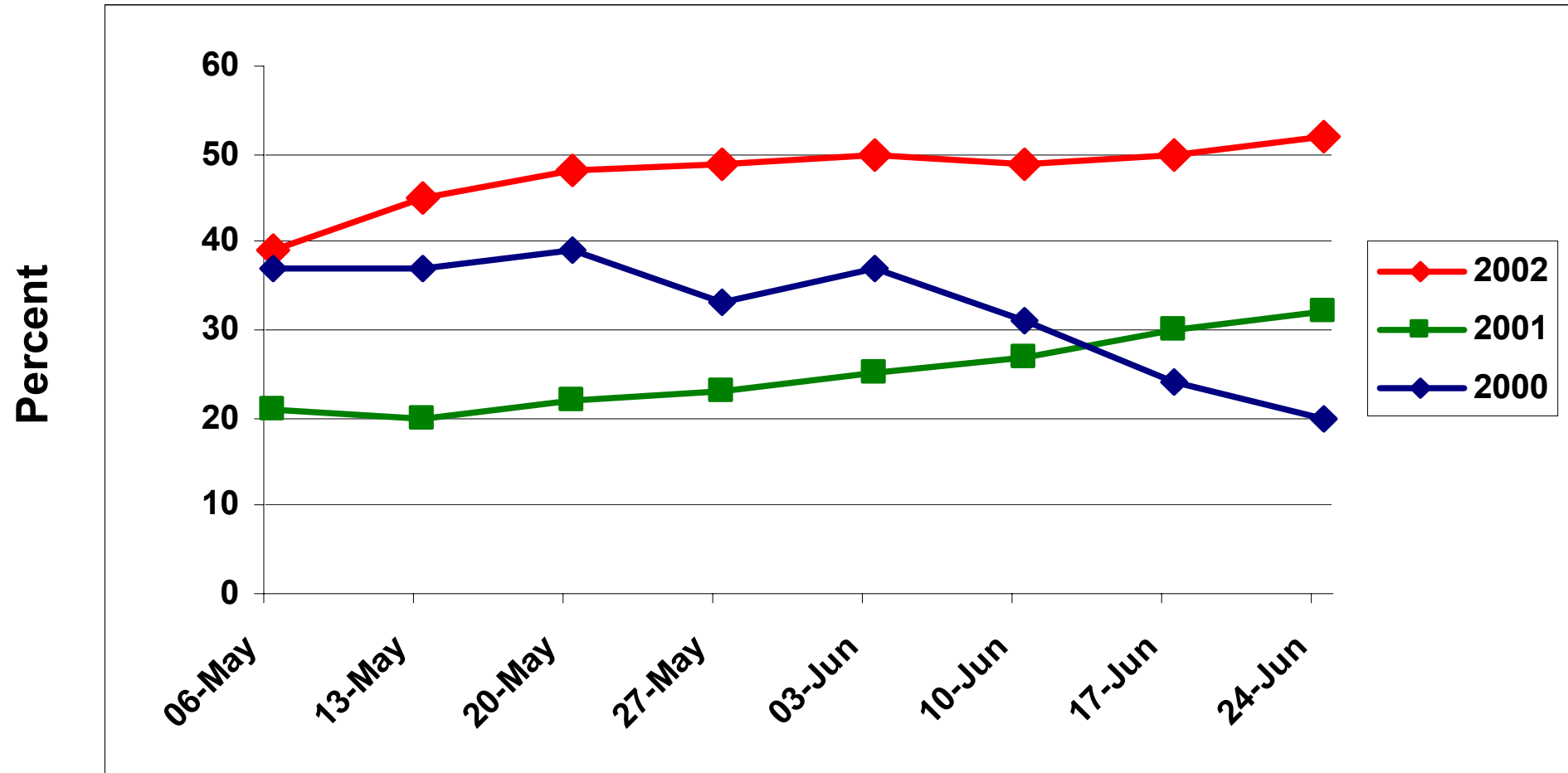
# Texas Winter Wheat Condition

## Percent Rated Poor - Very Poor

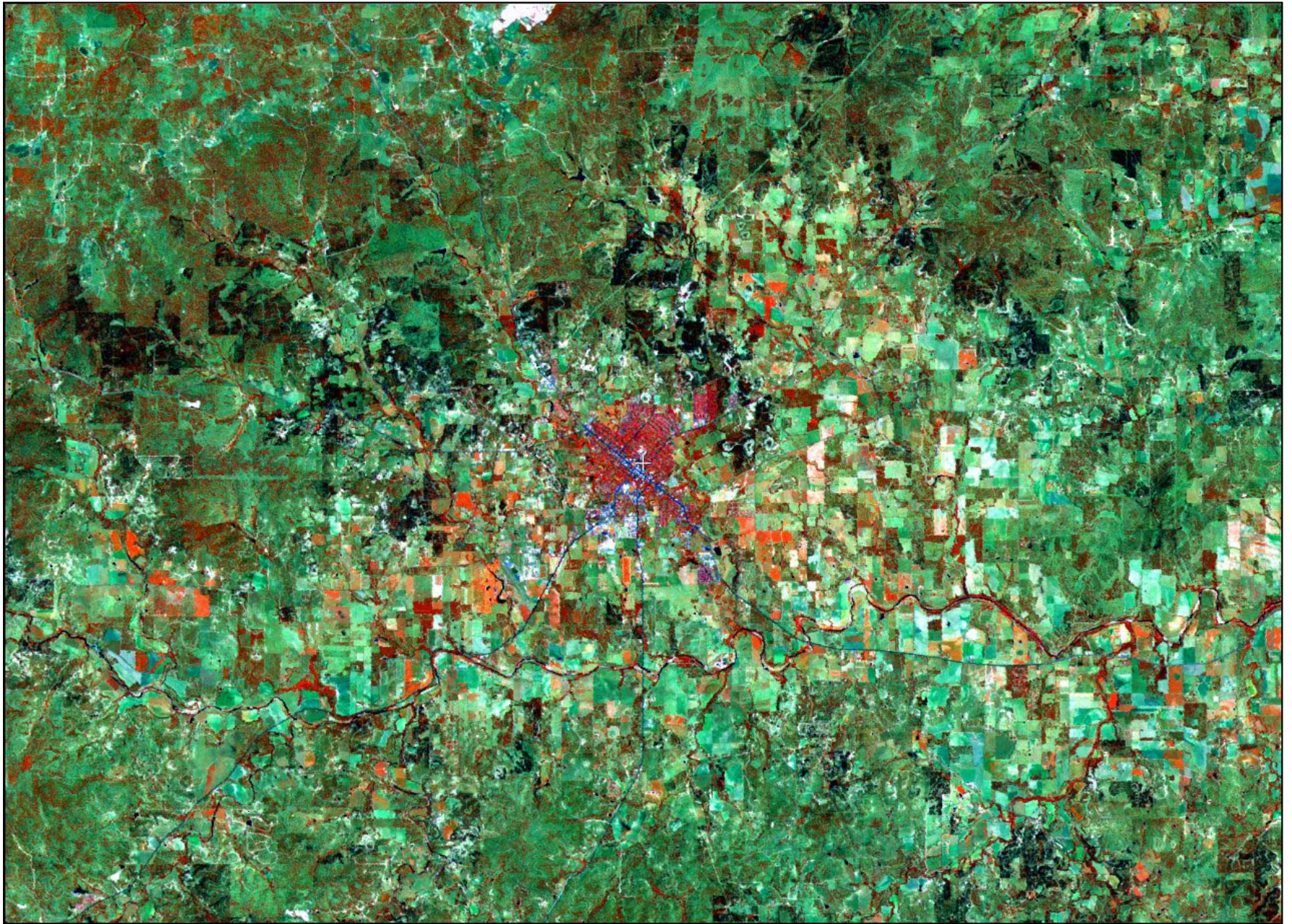


# Texas Range & Pasture Condition

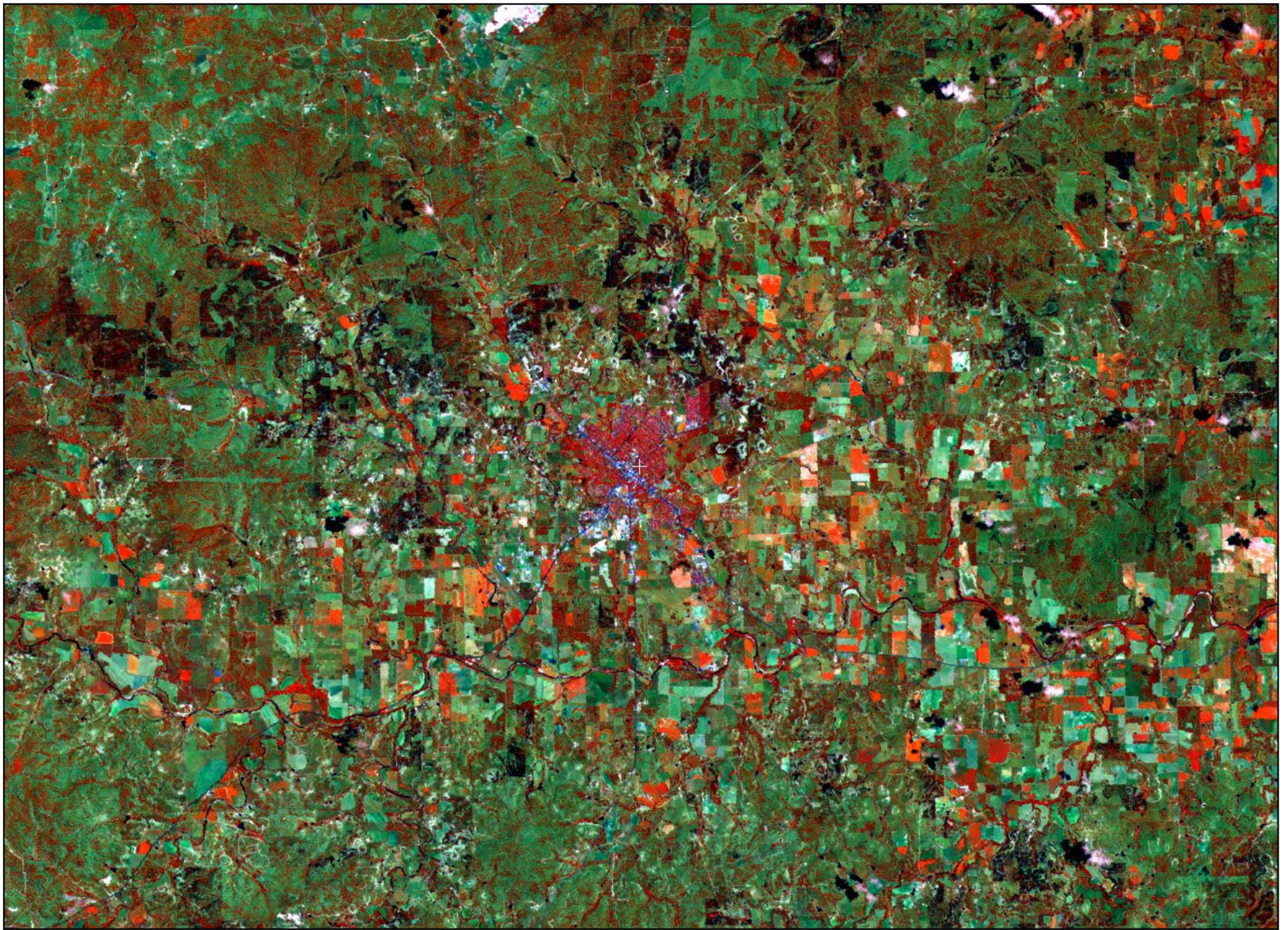
## Percent Rated Poor - Very Poor



# Fredericksburg, Texas



# Fredericksburg, Texas

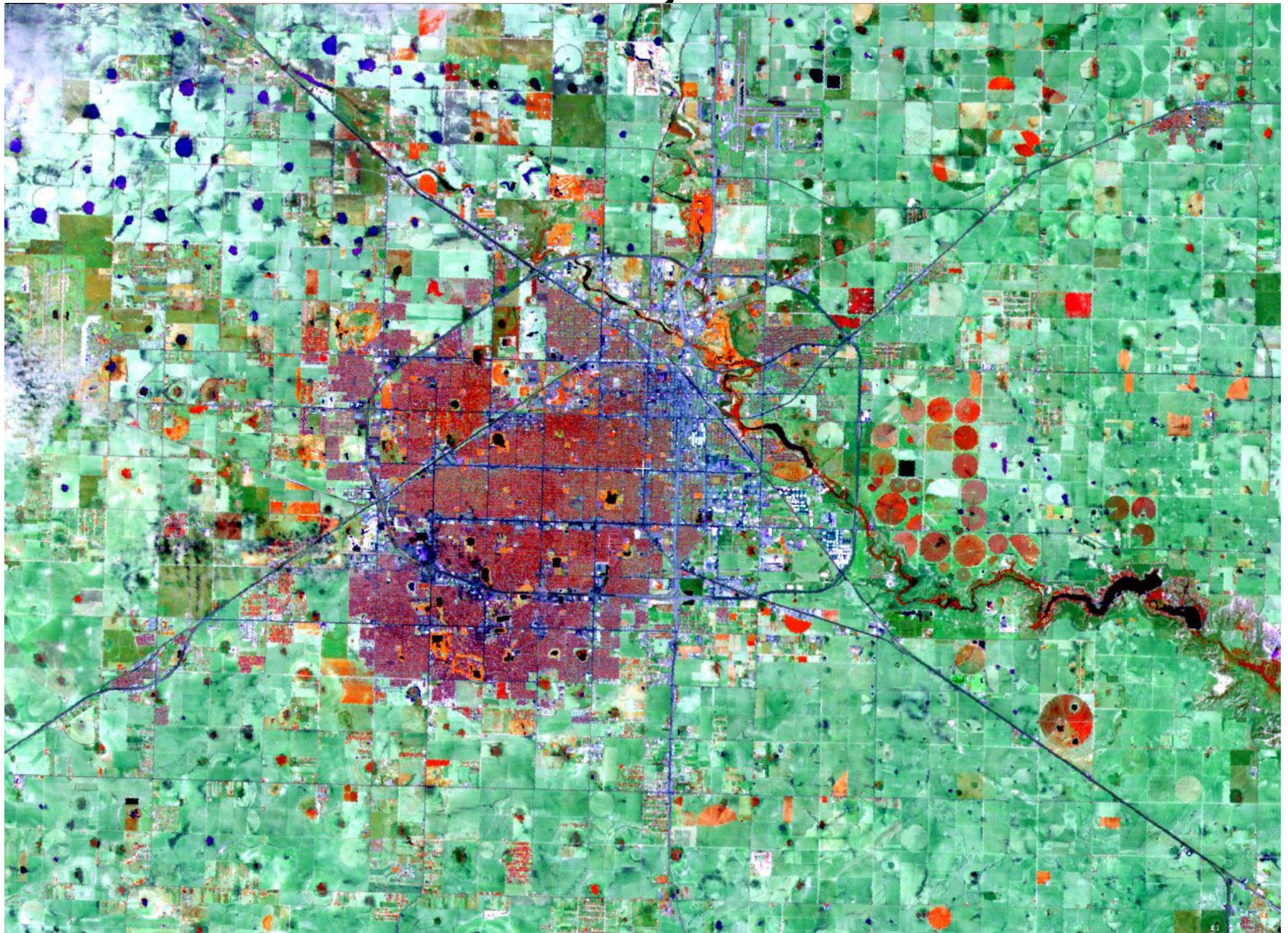


Landsat 7 TM – Ch. 4,5,3

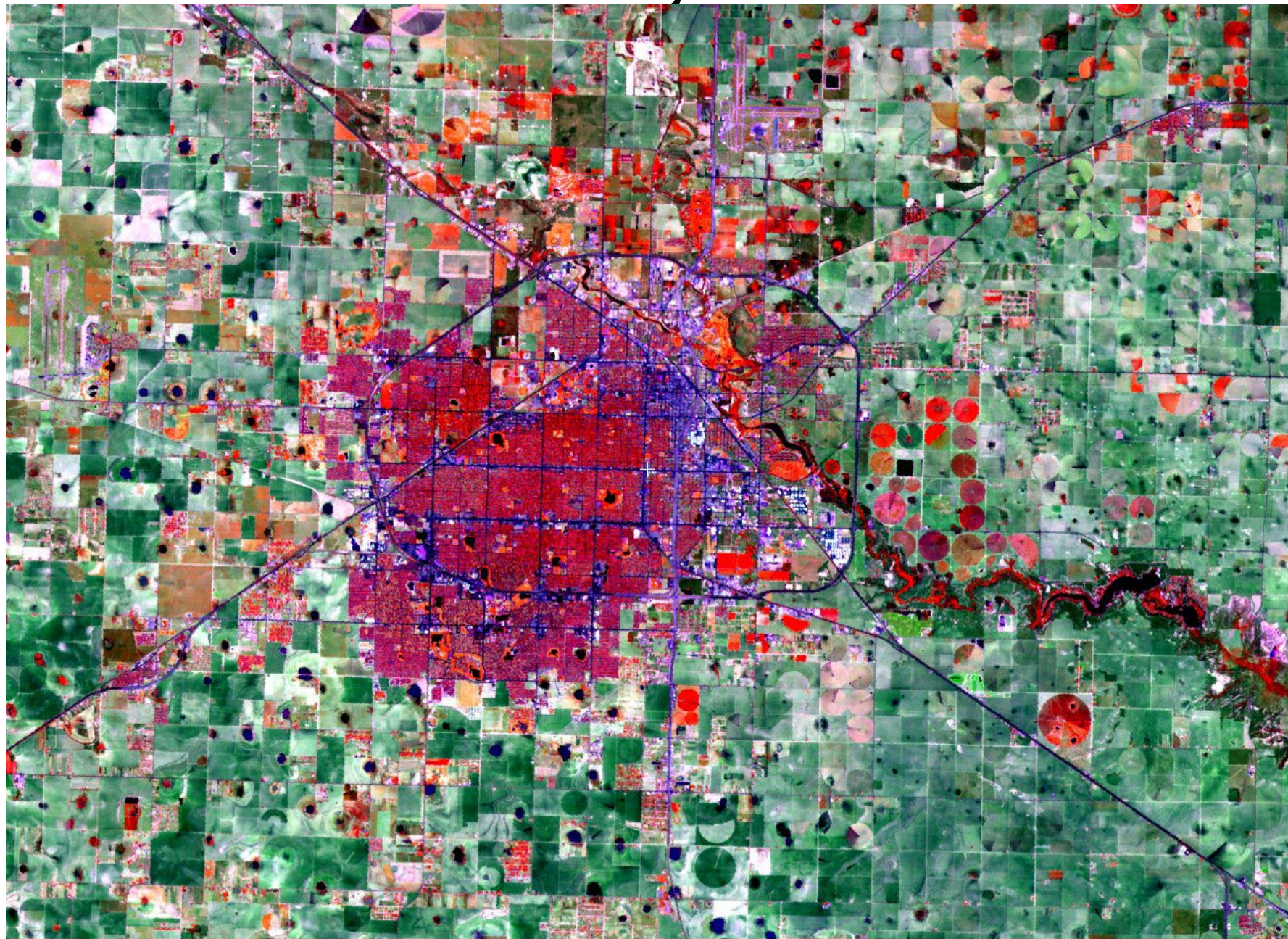
June 10, 2001



# Lubbock, Texas



# Lubbock, Texas

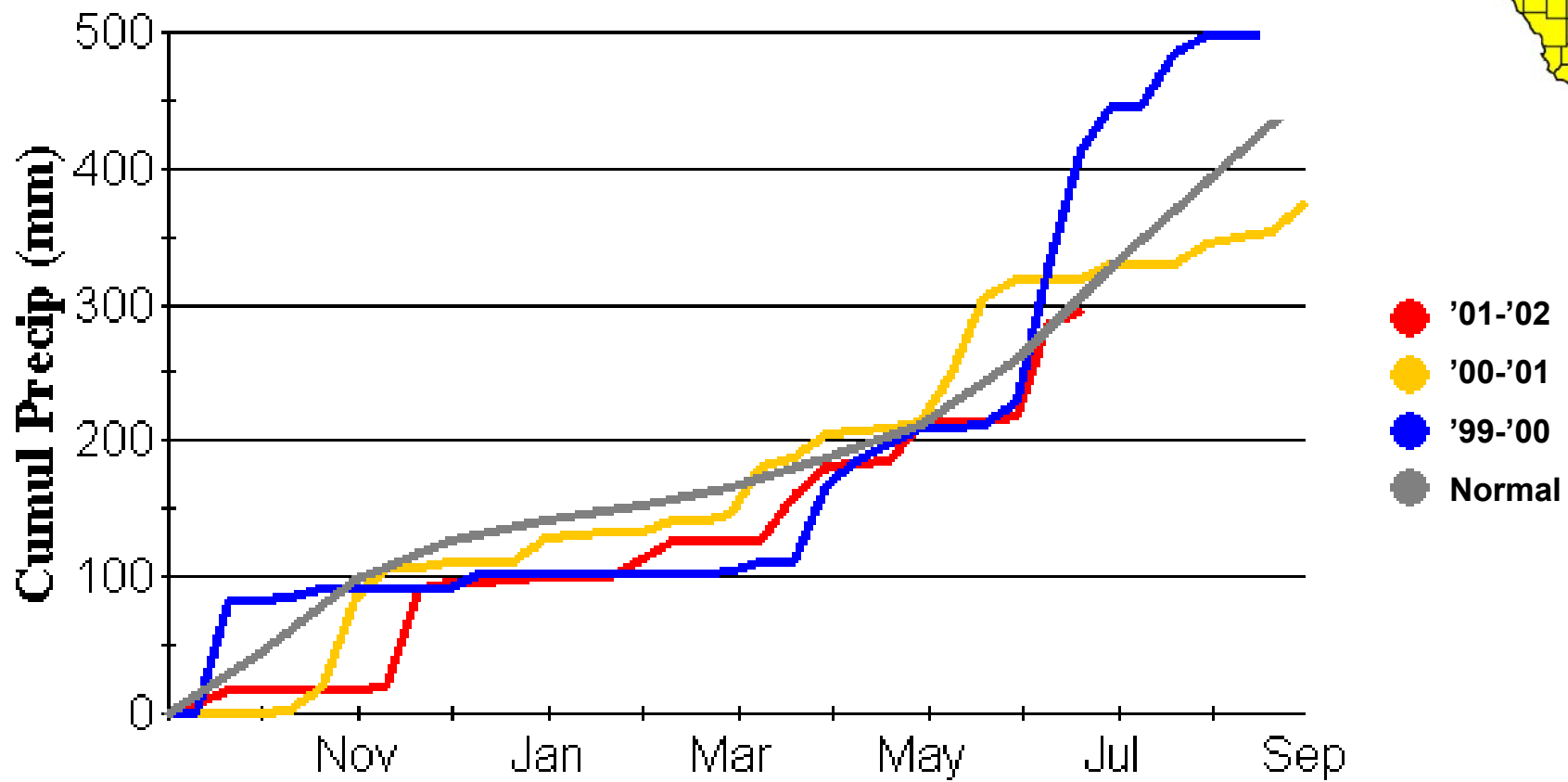
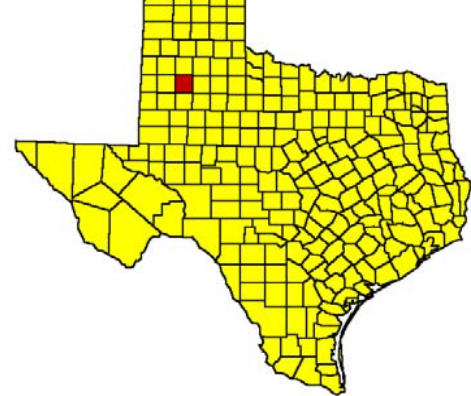


Landsat 7 TM – Ch. 4,5,3

June 16, 2001

# Lubbock, Texas – Precipitation

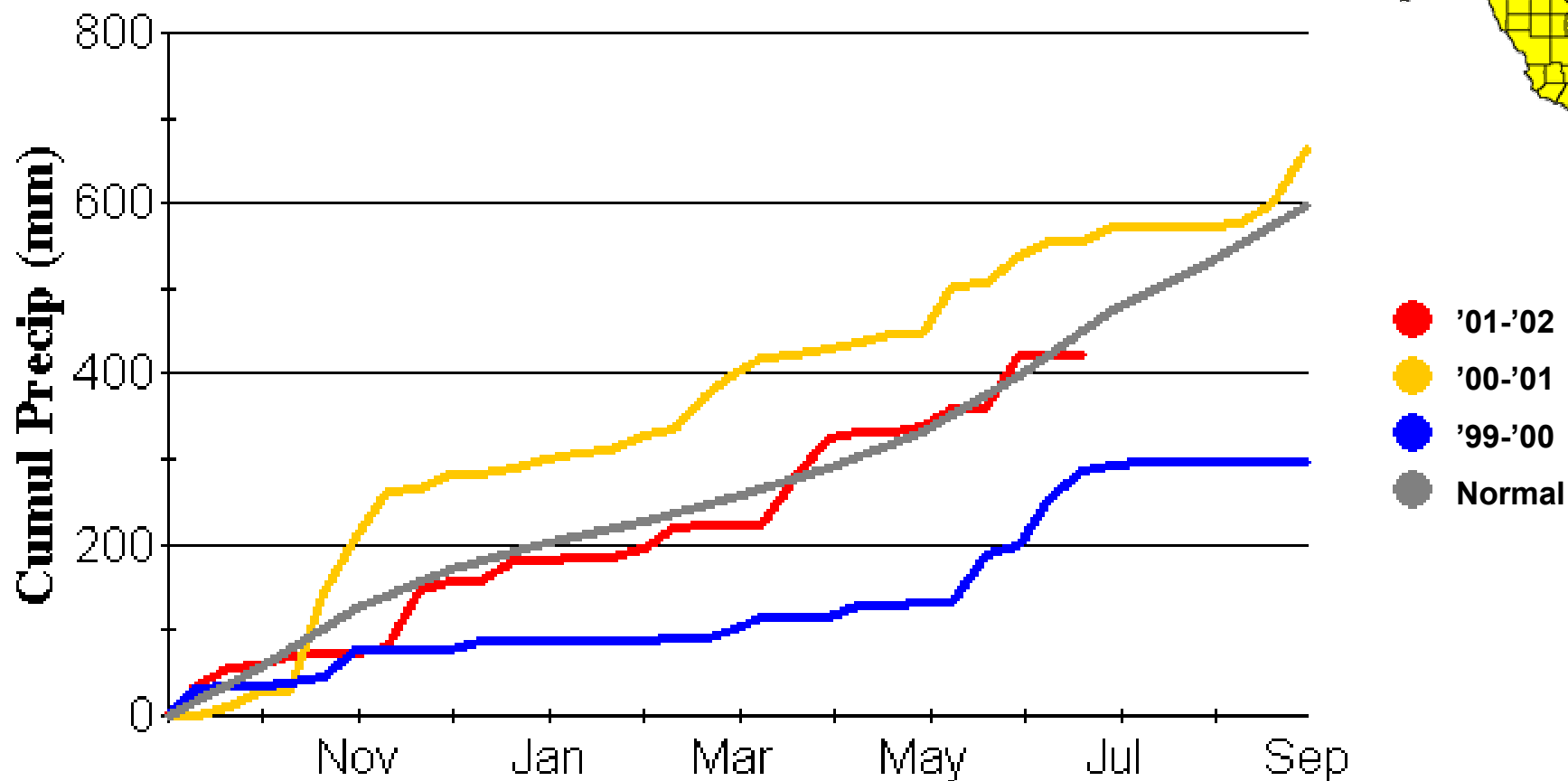
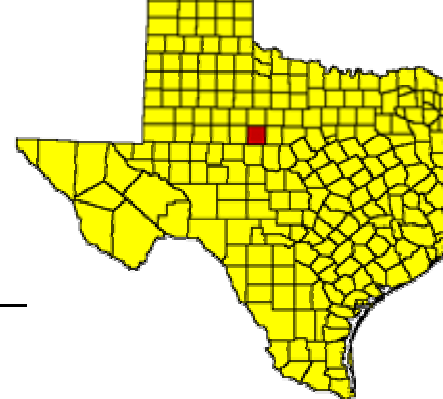
STATION:72267 LUBBOCK TEX.



USDA-FAS-PECAD

# Abilene, Texas – Precipitation

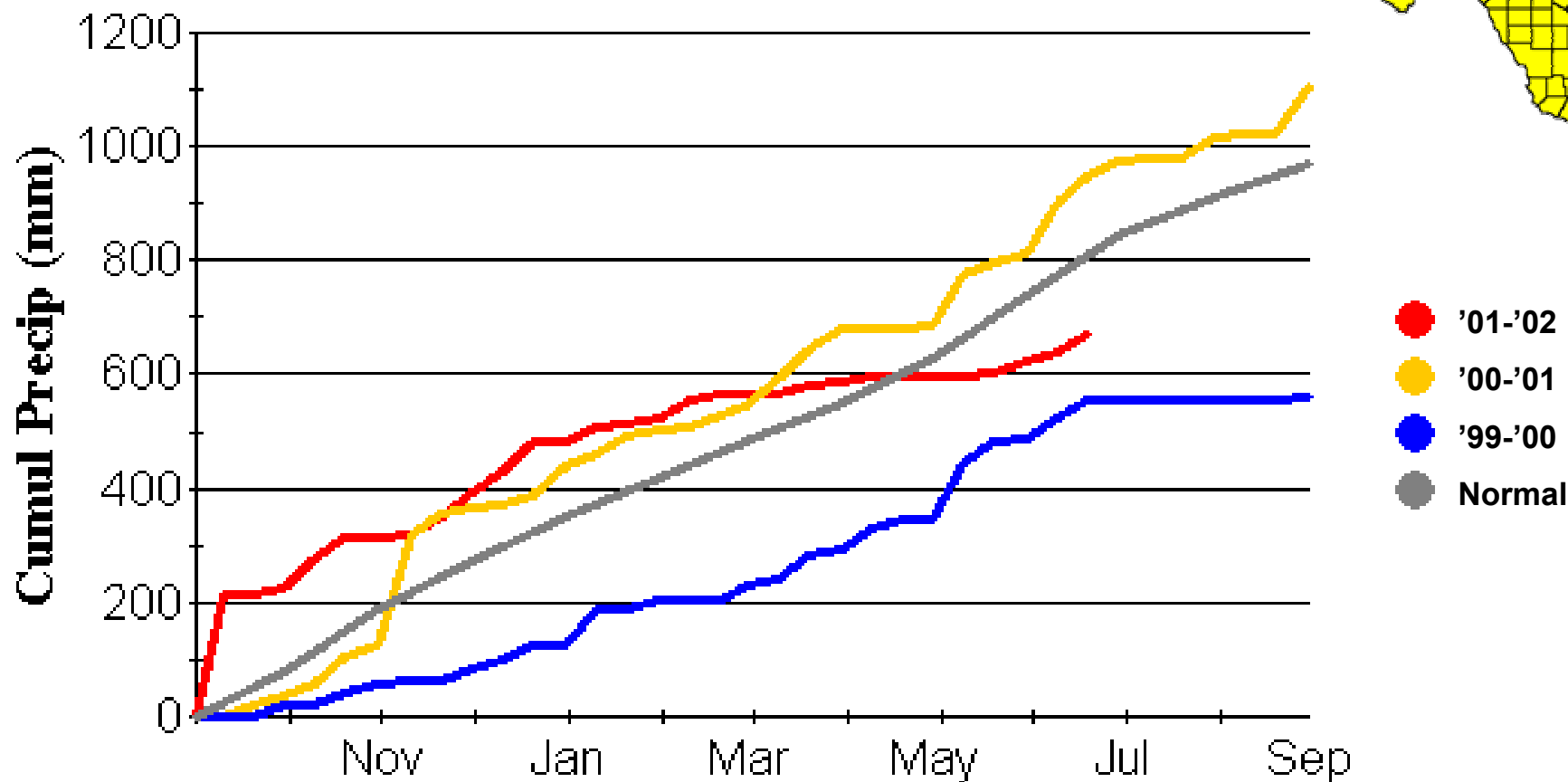
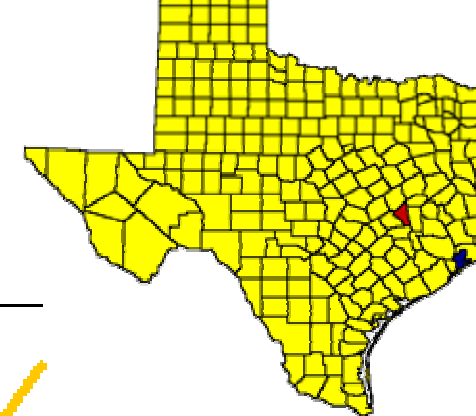
STATION:72266 ABILENE TEX.



USDA-FAS-PECAD

# College Station, Texas – Precipitation

STATION:99999CLL COLLEGE STATION



USDA-FAS-PECAD