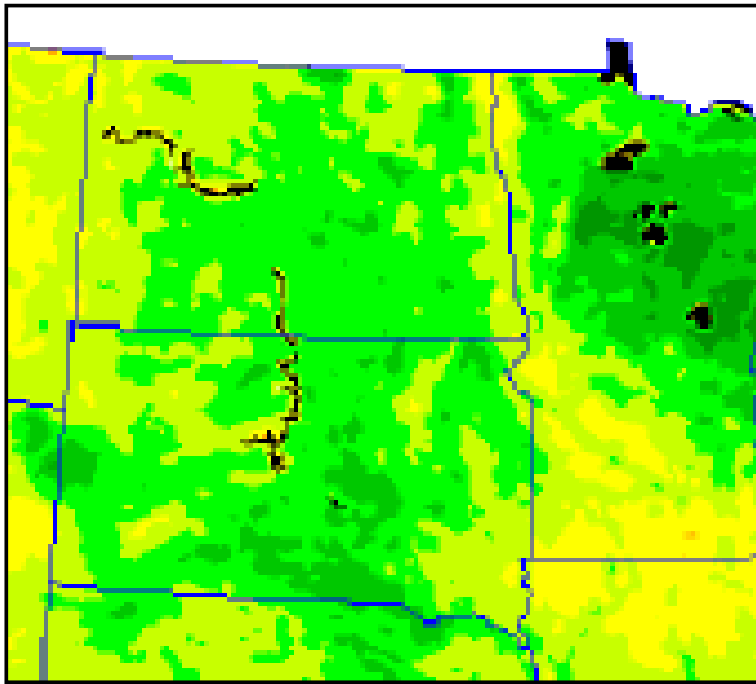
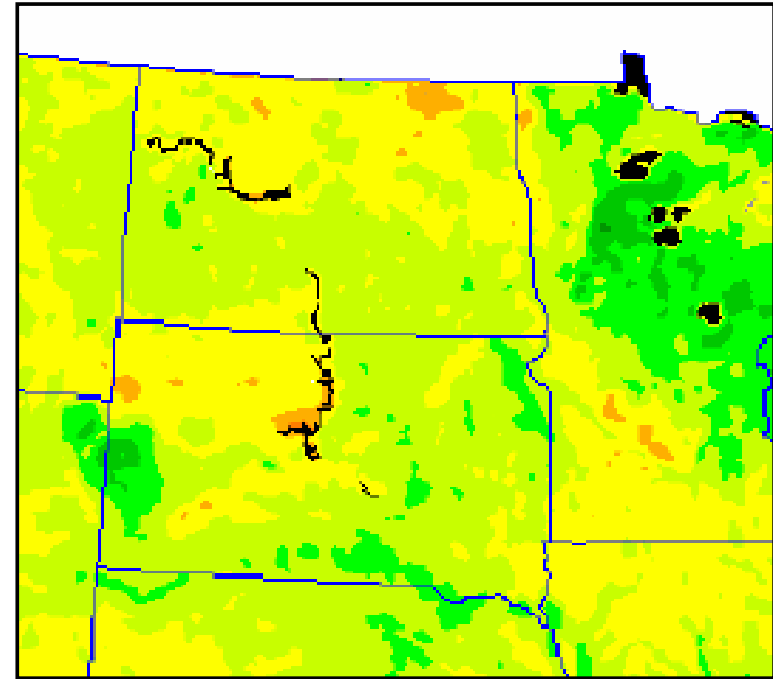


North Dakota & South Dakota Vegetation Comparison



June 2001

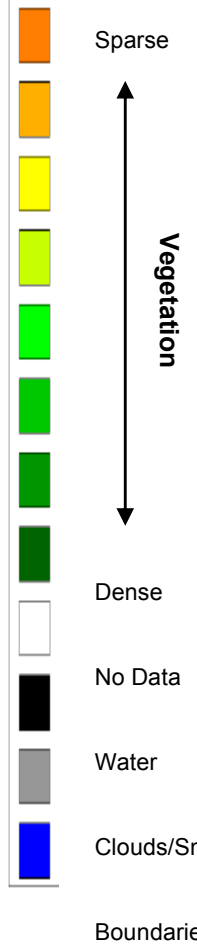
NDVI Composite – June 1 - 15, 2001
NOAA 16 Polar Orbiter



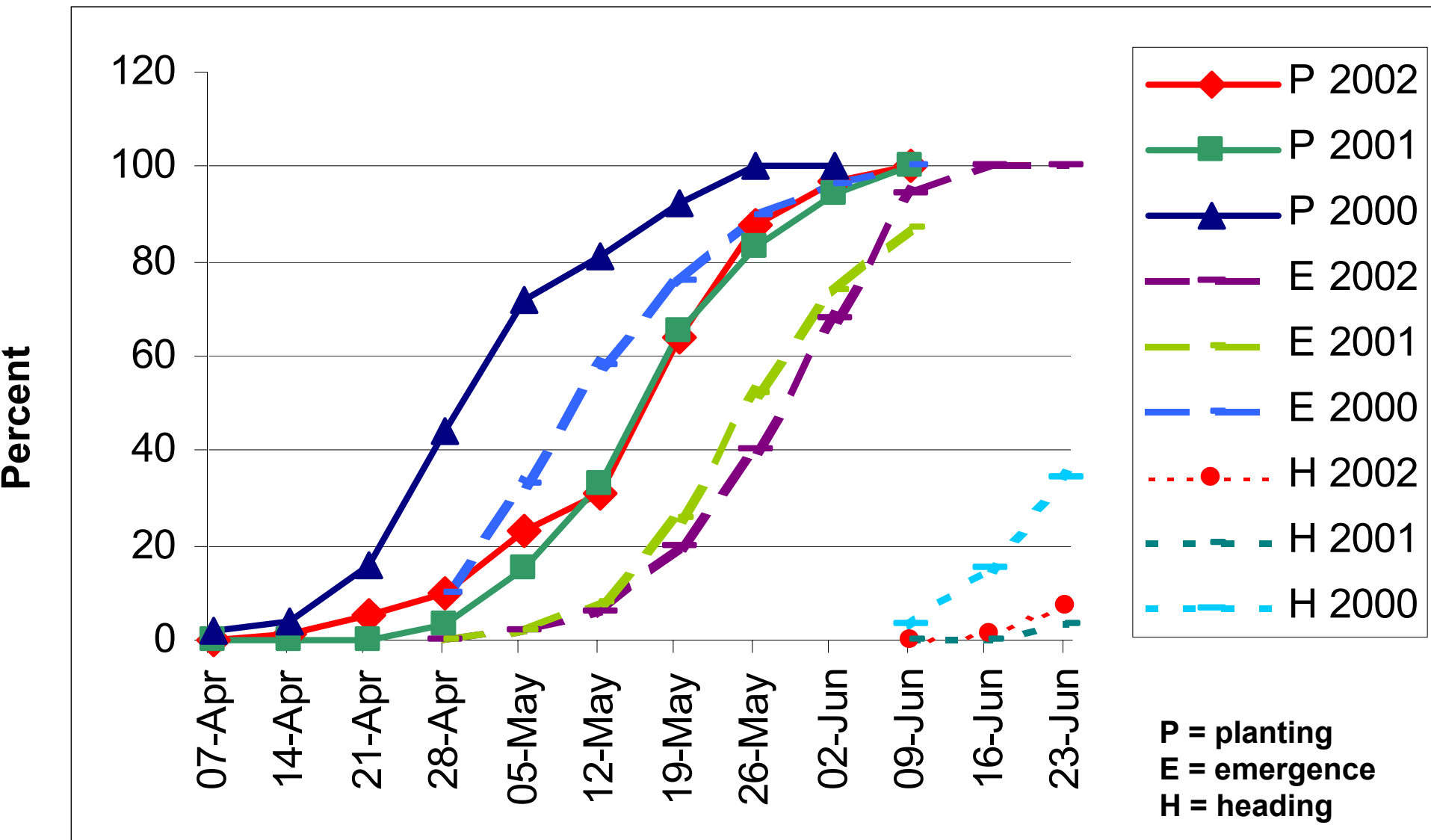
June 2002

NDVI Composite – June 1 - 15, 2002
NOAA 16 Polar Orbiter

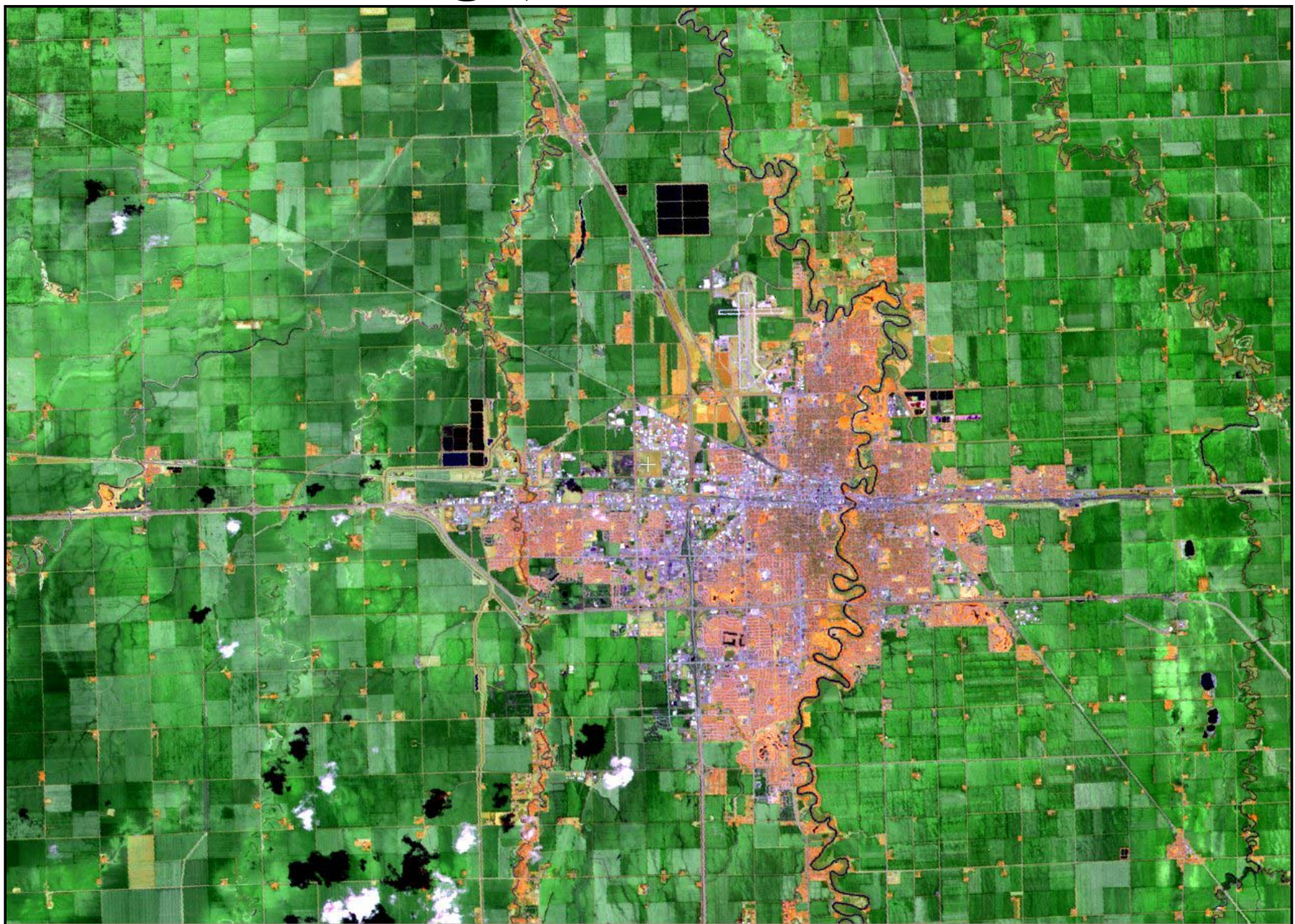
June 23, 2002 – ND 8% WHS P-VP
SD 61% WHS P-VP



North Dakota – Spring Wheat Crop Progress



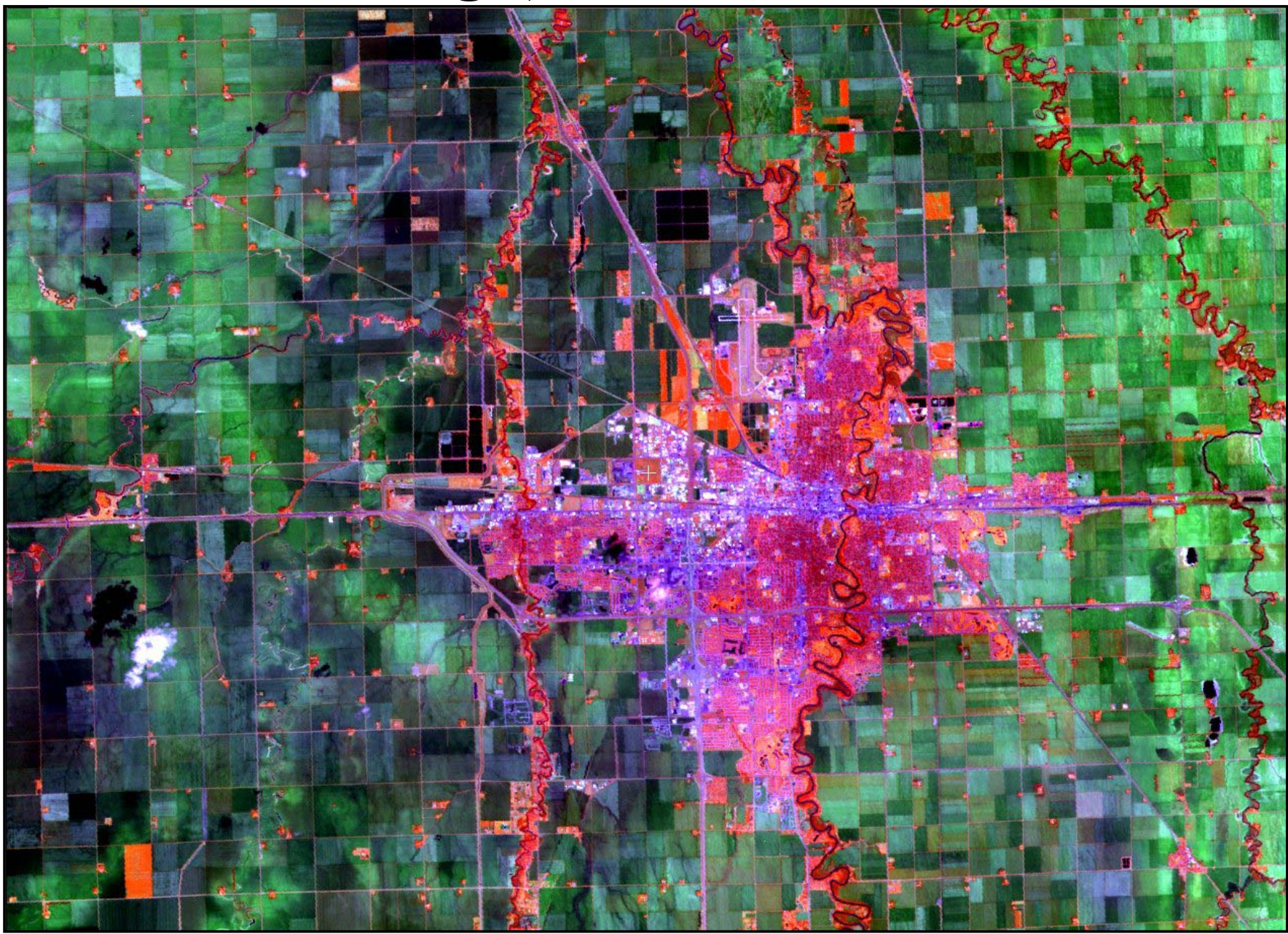
Fargo, North Dakota



Landsat 7 TM – Ch. 4,5,3

May 10, 2002

Fargo, North Dakota

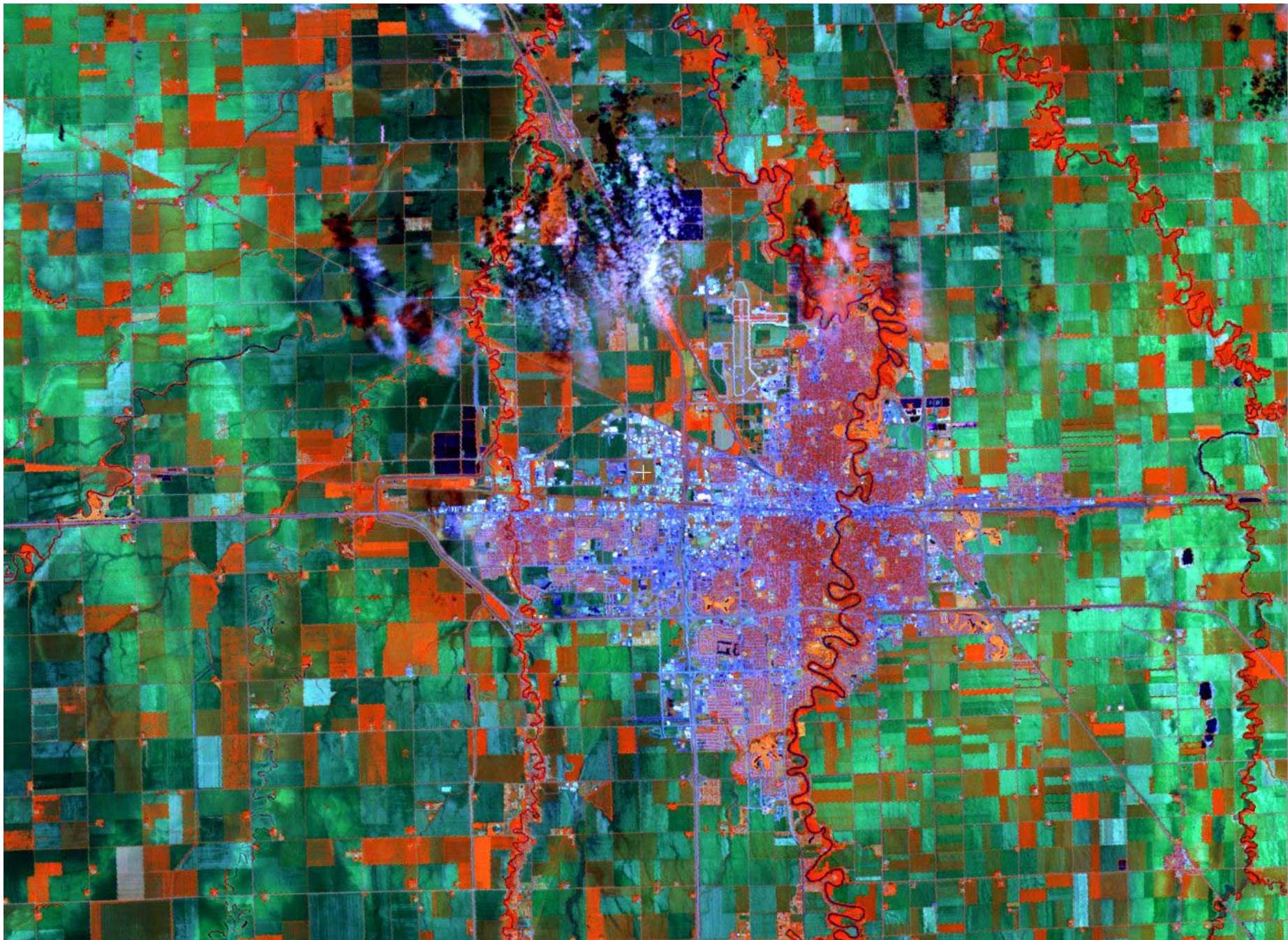


Landsat 7 TM – Ch. 4,5,3

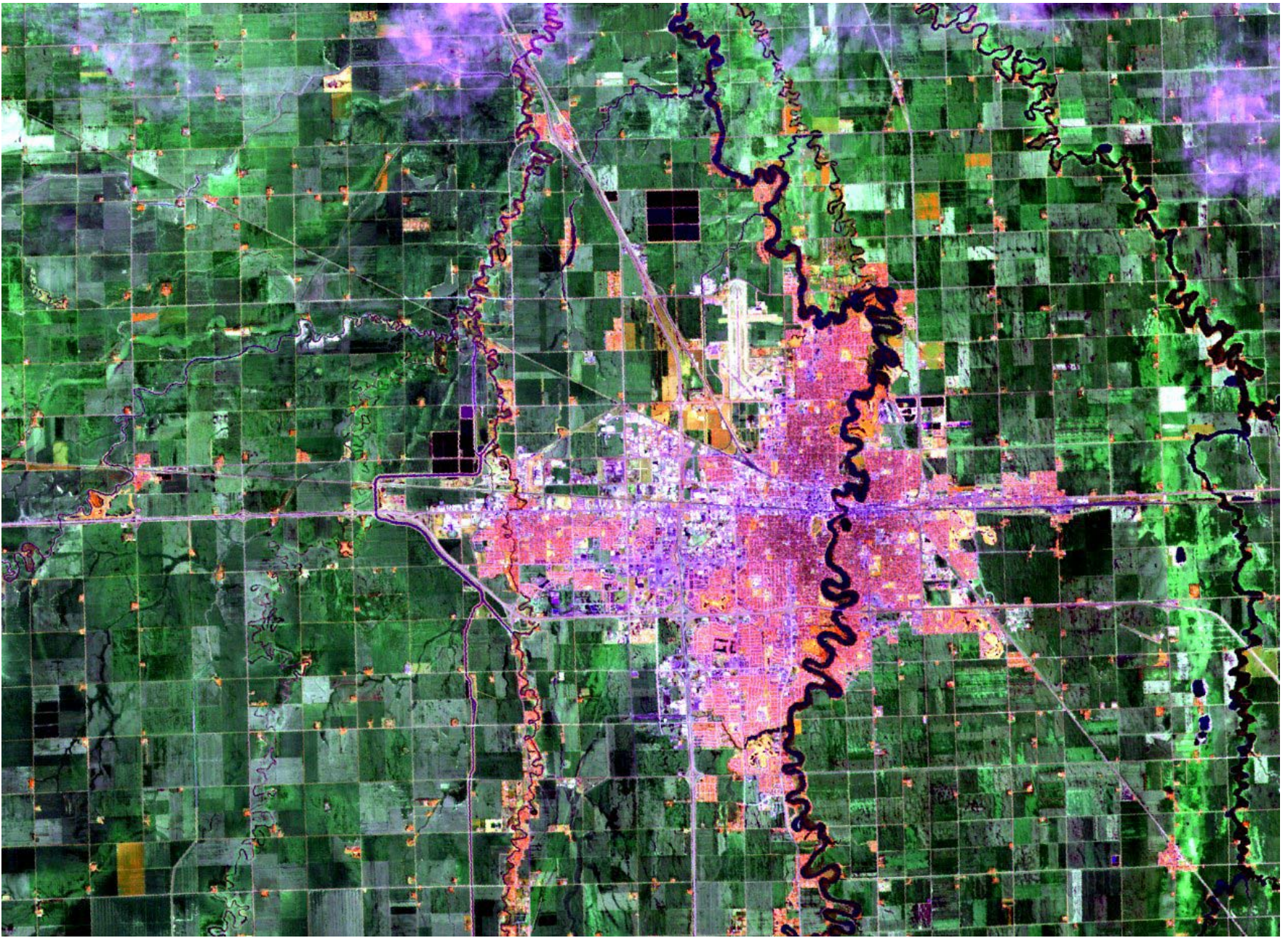
May 26, 2002

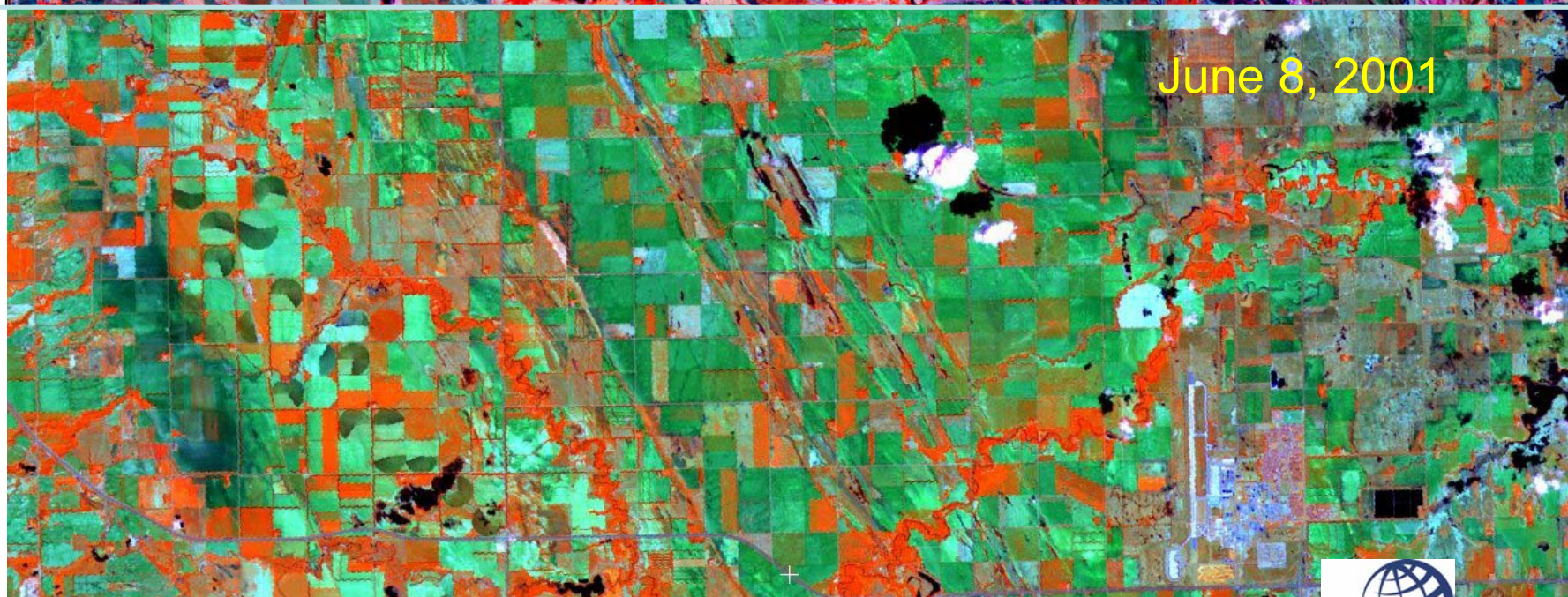
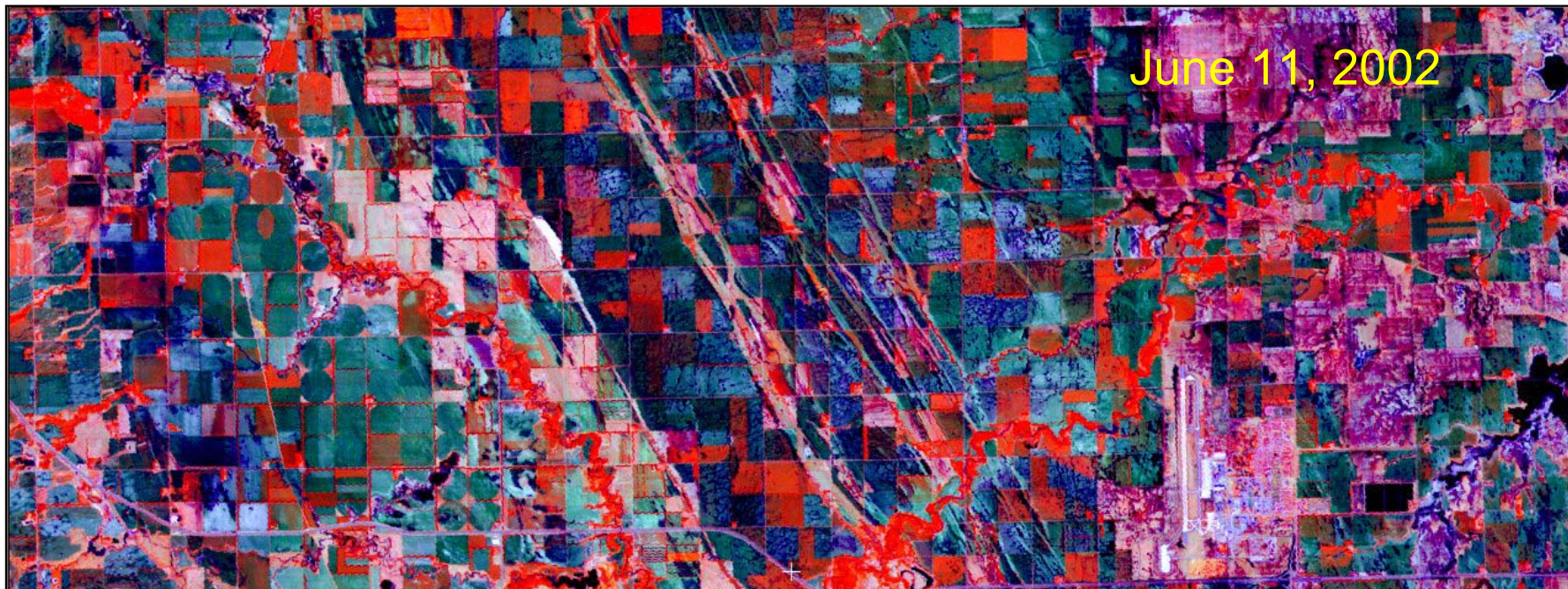
Fargo, North Dakota



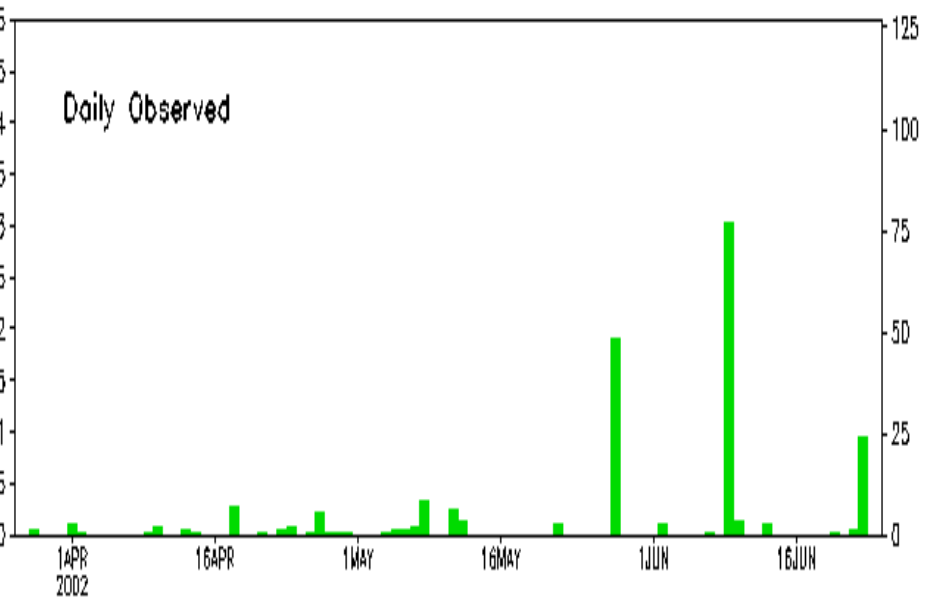
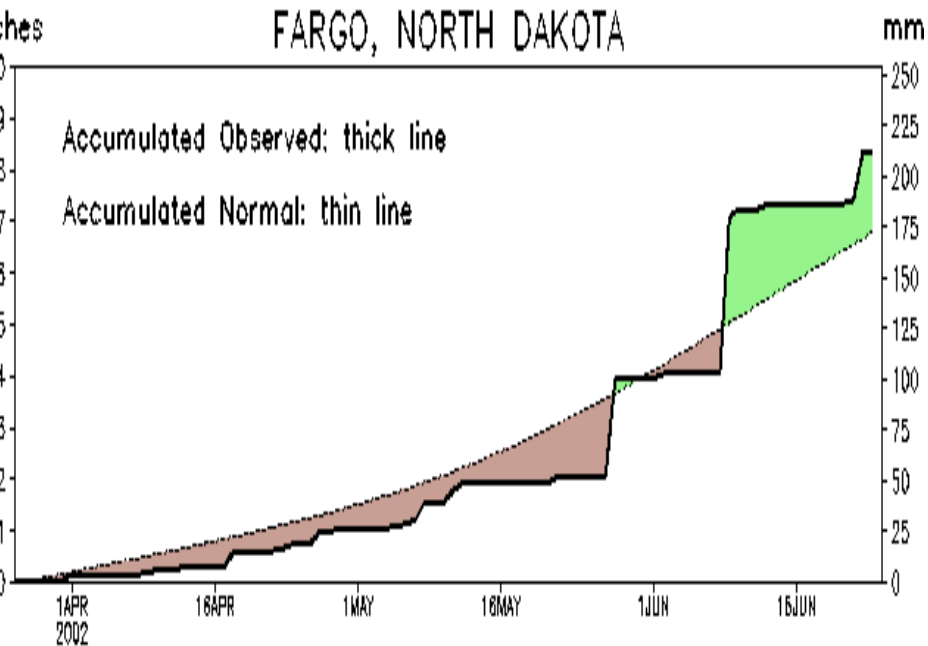


Fargo, North Dakota



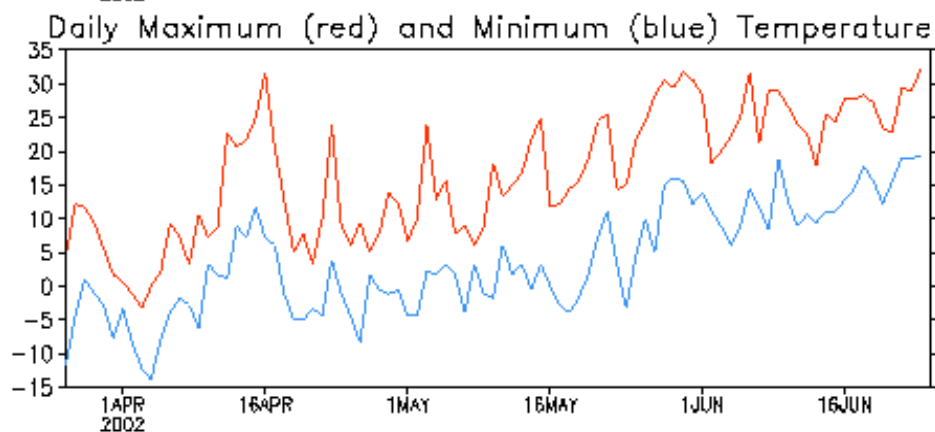
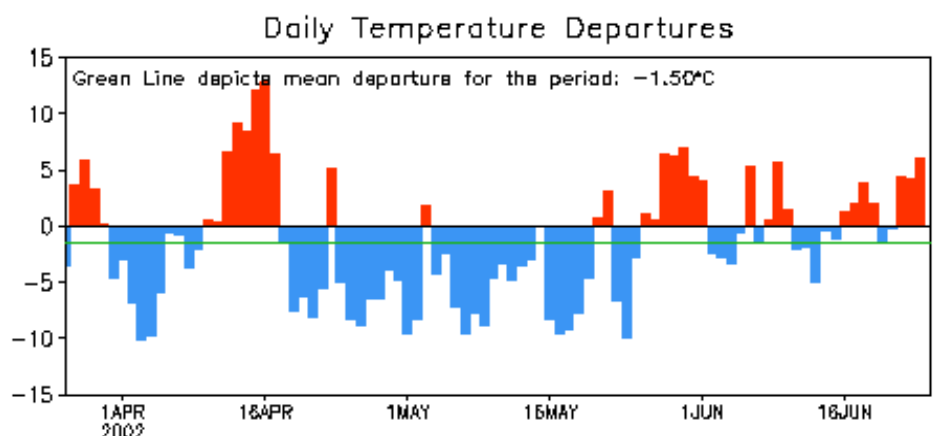
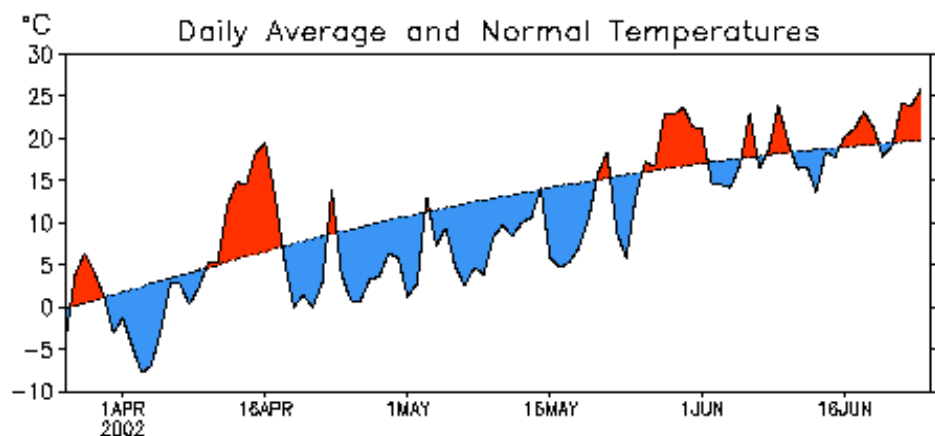


FARGO, NORTH DAKOTA



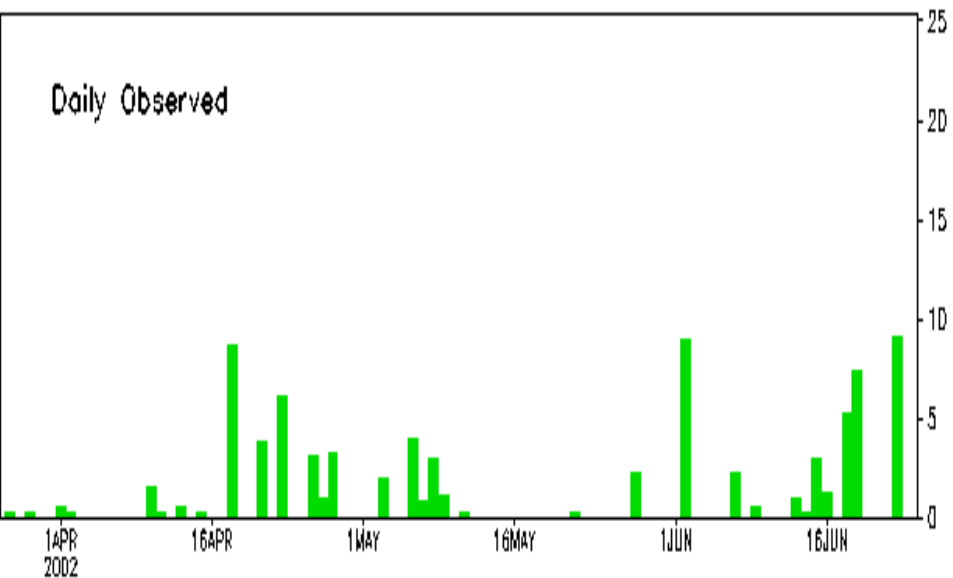
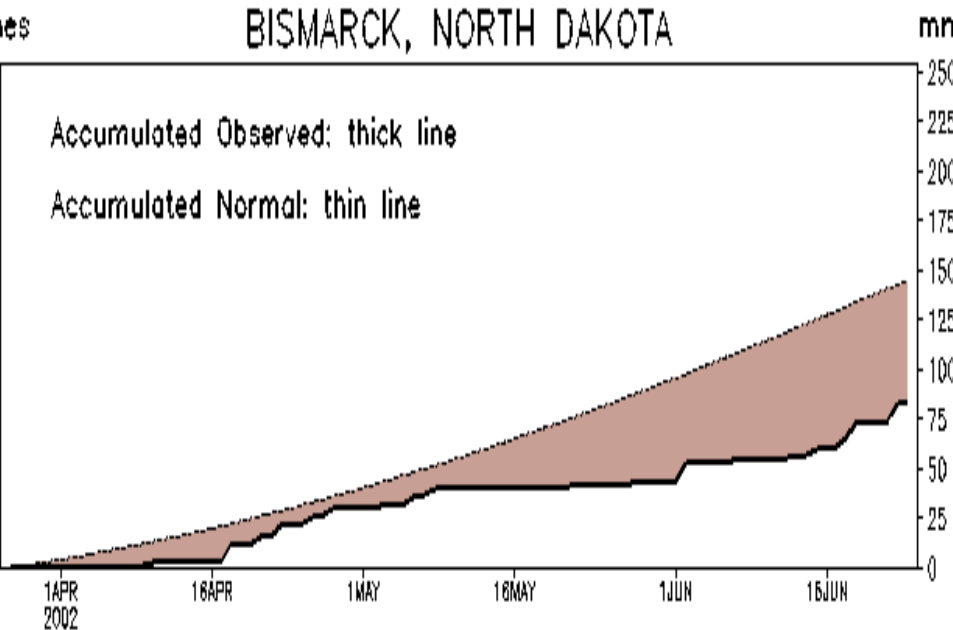
Data updated through 24 JUN 2002

FARGO, NORTH DAKOTA



Data updated through 24 JUN 2002

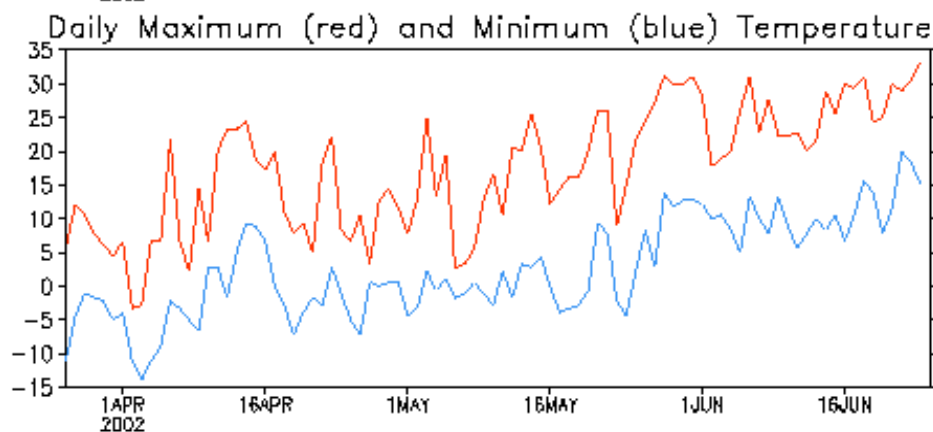
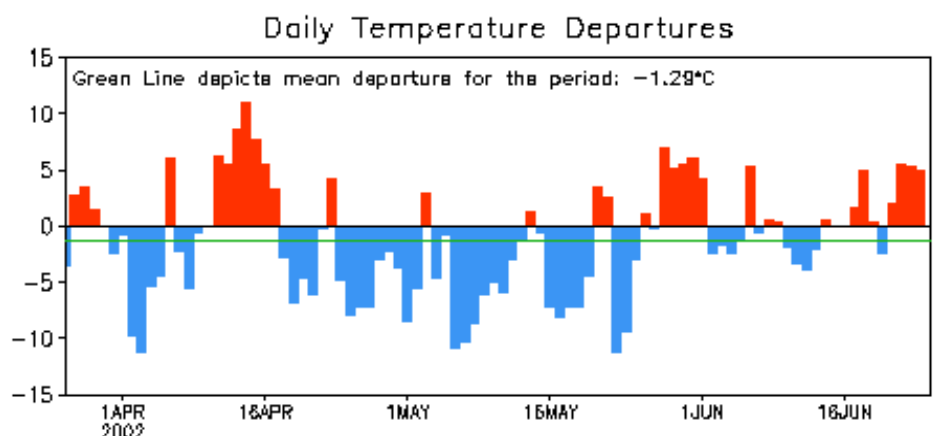
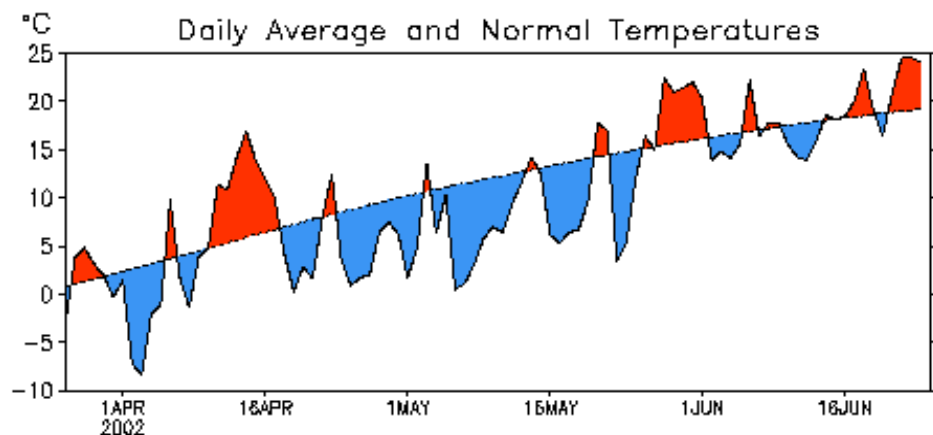
BISMARCK, NORTH DAKOTA



Data updated through 24 JUN 2002

CLIMATE PREDICTION CENTER/NCEP

BISMARCK, NORTH DAKOTA

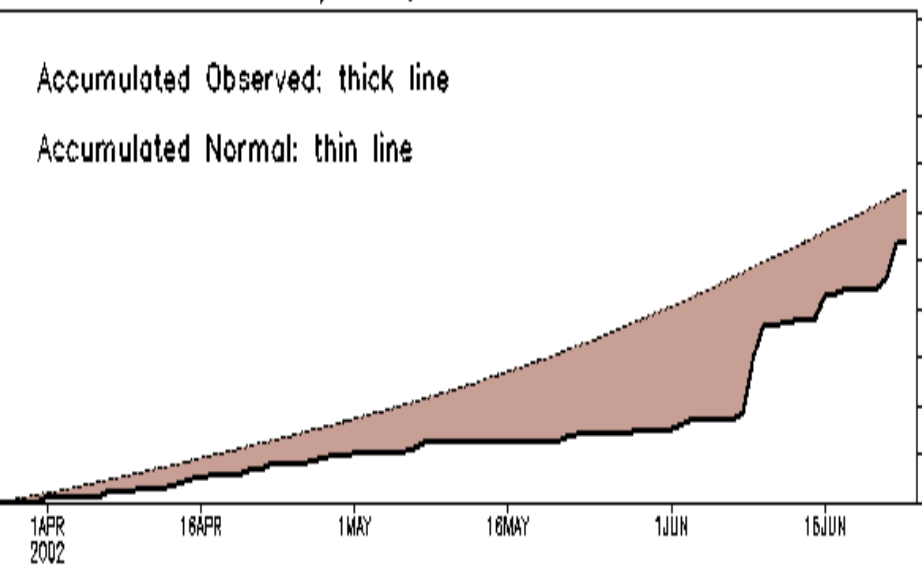


Data updated through 24 JUN 2002

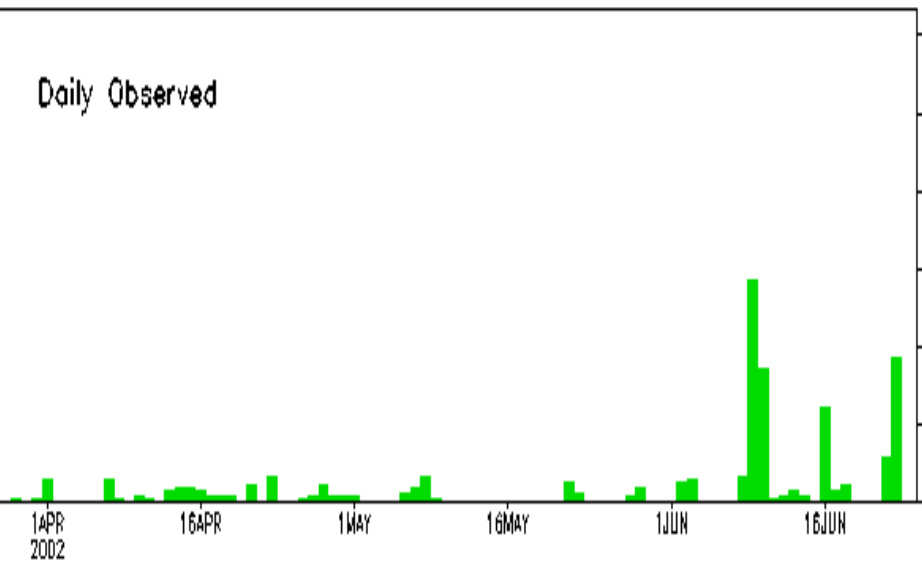
CLIMATE PREDICTION CENTER/NCEP

MINOT/INTL, NORTH DAKOTA

Accumulated Observed: thick line
Accumulated Normal: thin line



Daily Observed

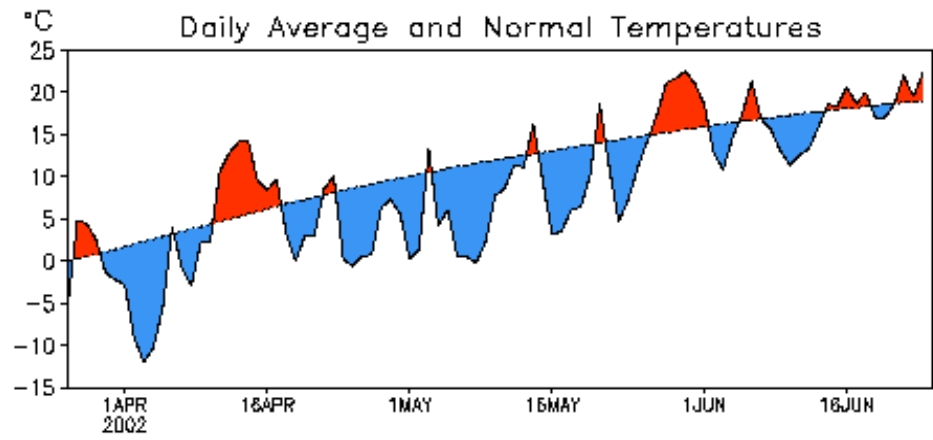


Data updated through 24 JUN 2002

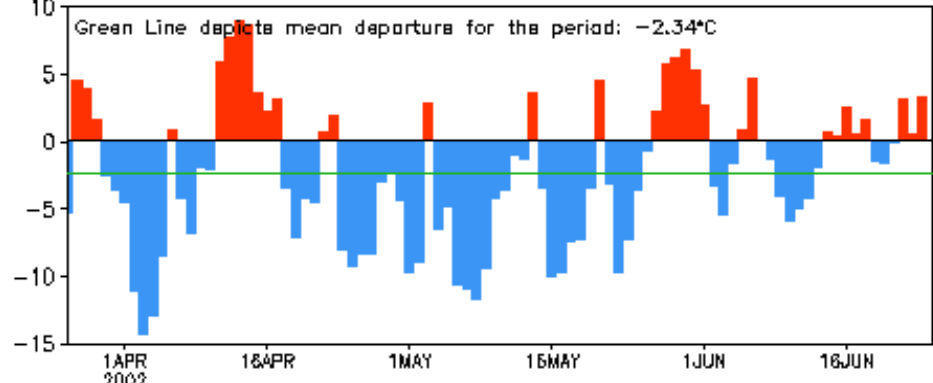
CLIMATE PREDICTION CENTER/NCEP

MINOT/INTL, NORTH DAKOTA

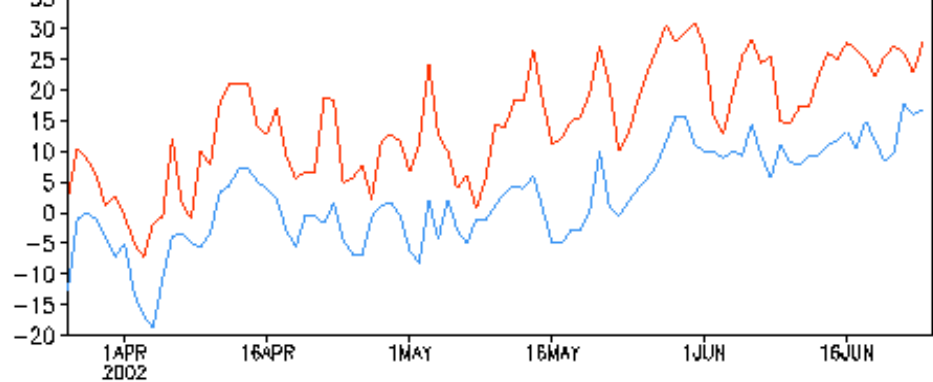
Daily Average and Normal Temperatures



Daily Temperature Departures



Daily Maximum (red) and Minimum (blue) Temperatures



Data updated through 24 JUN 2002

CLIMATE PREDICTION CENTER/NCEP