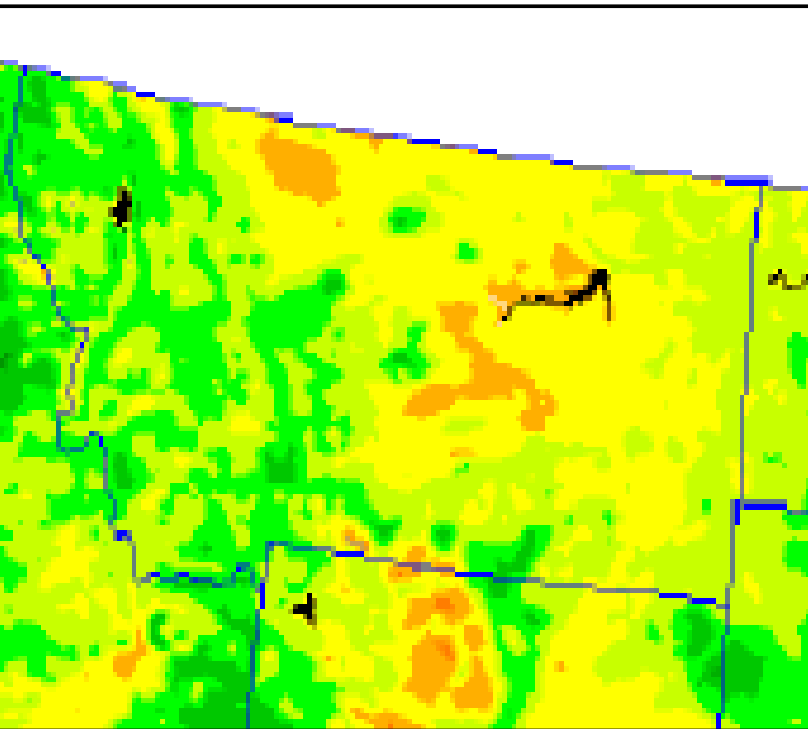
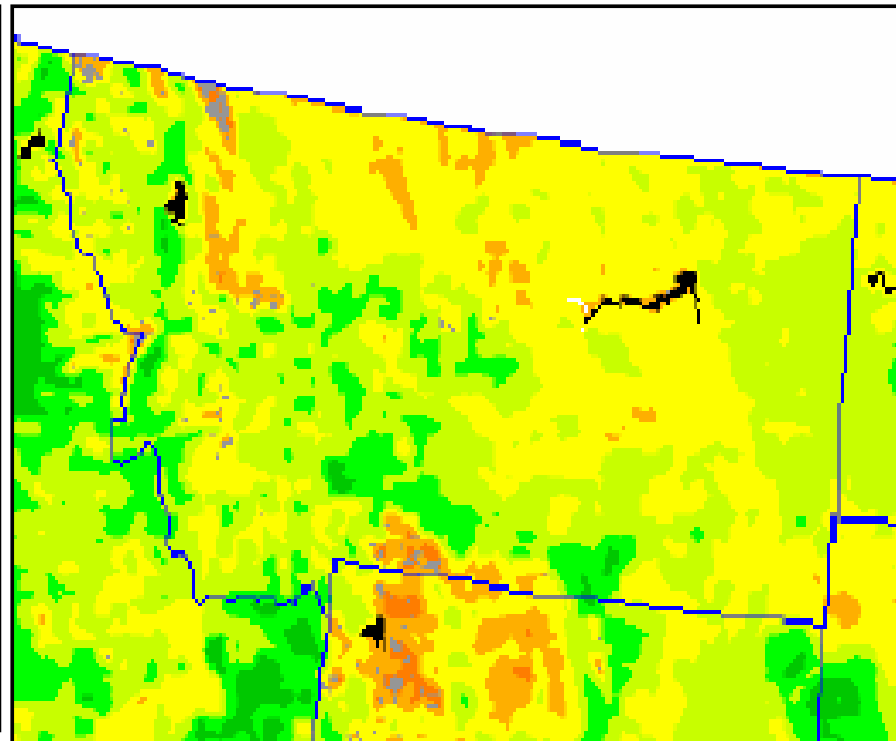


Montana Vegetation Comparison



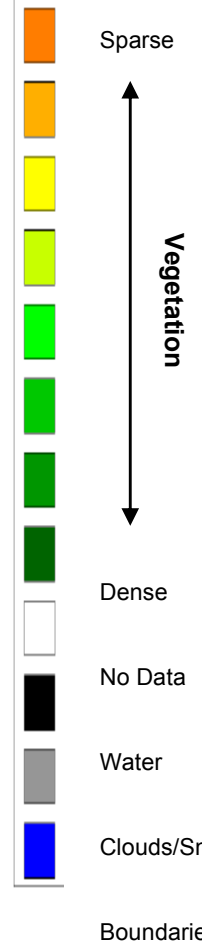
June 2001

NDVI Composite – June 1 - 15, 2001
NOAA 16 Polar Orbiter

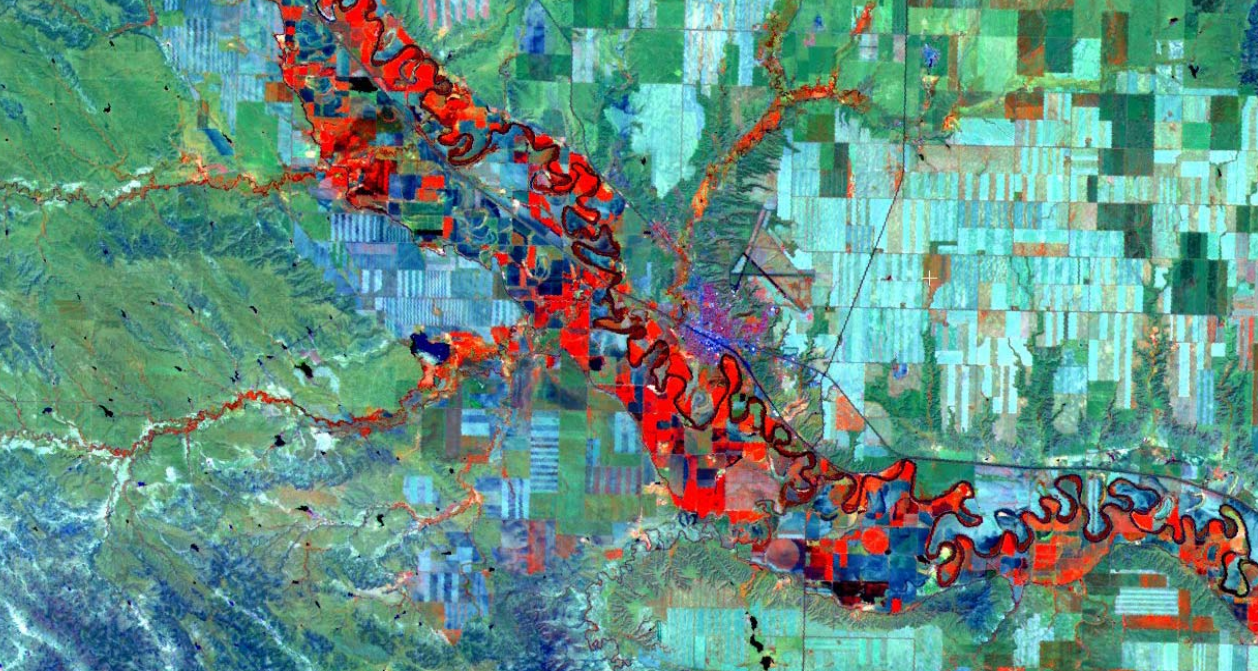


June 2002

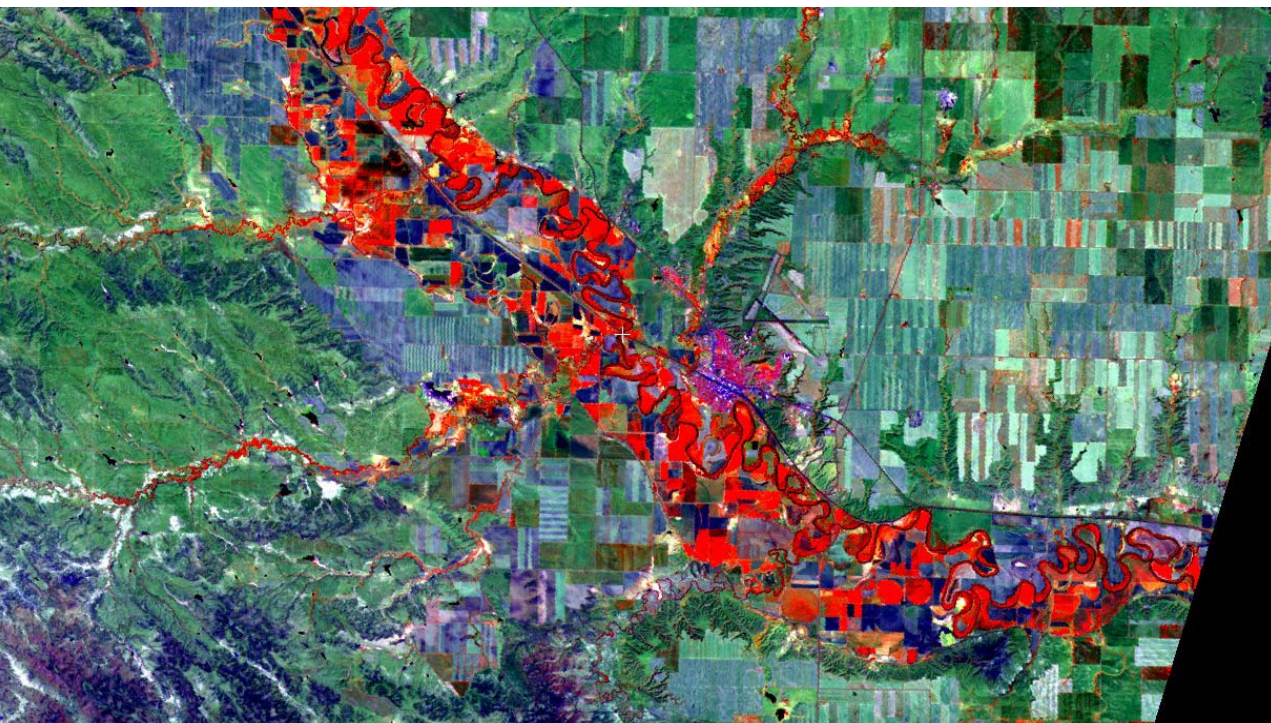
NDVI Composite – June 1 - 15, 2002
NOAA 16 Polar Orbiter



June 5, 2002

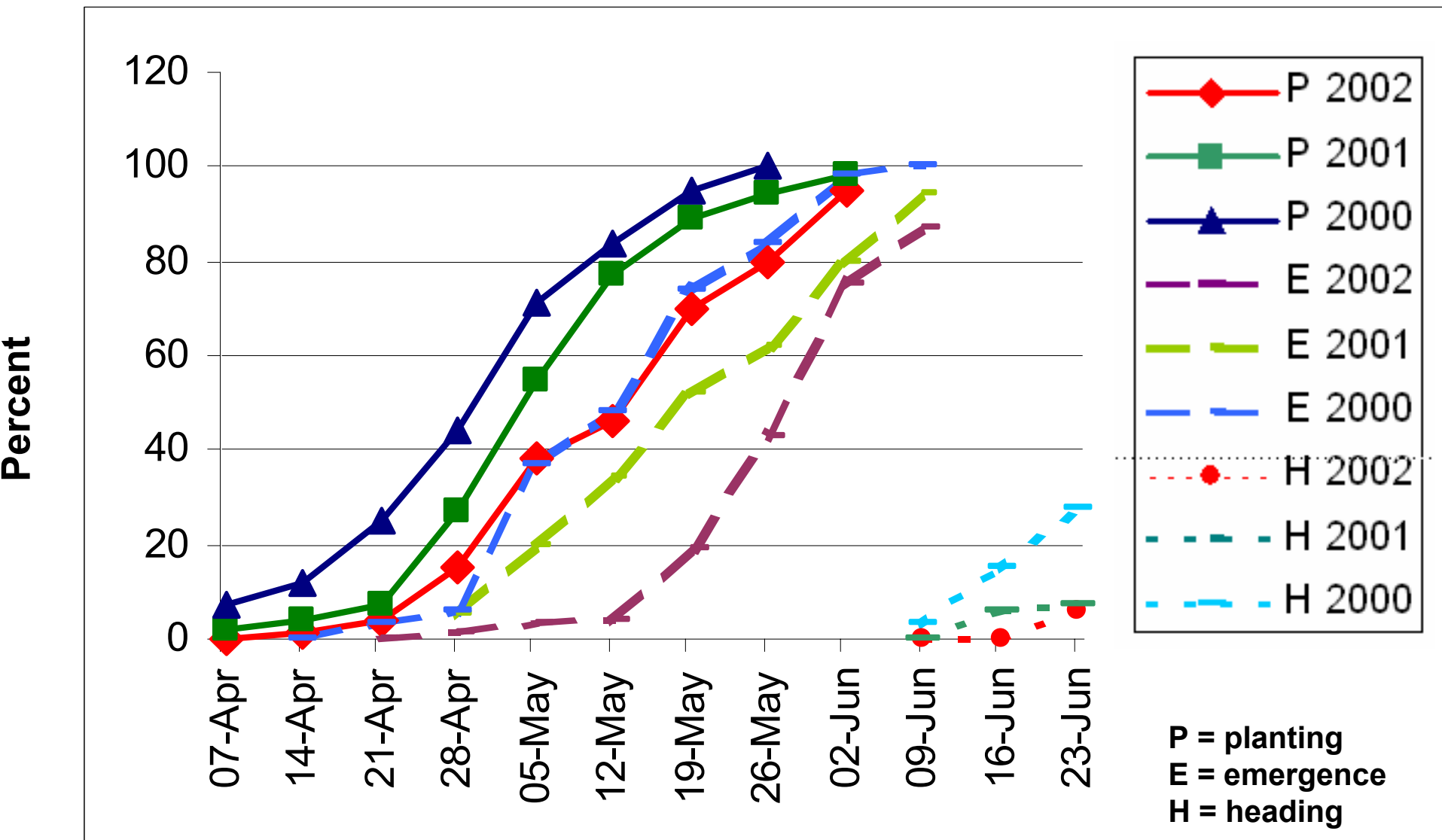


May 26, 2001



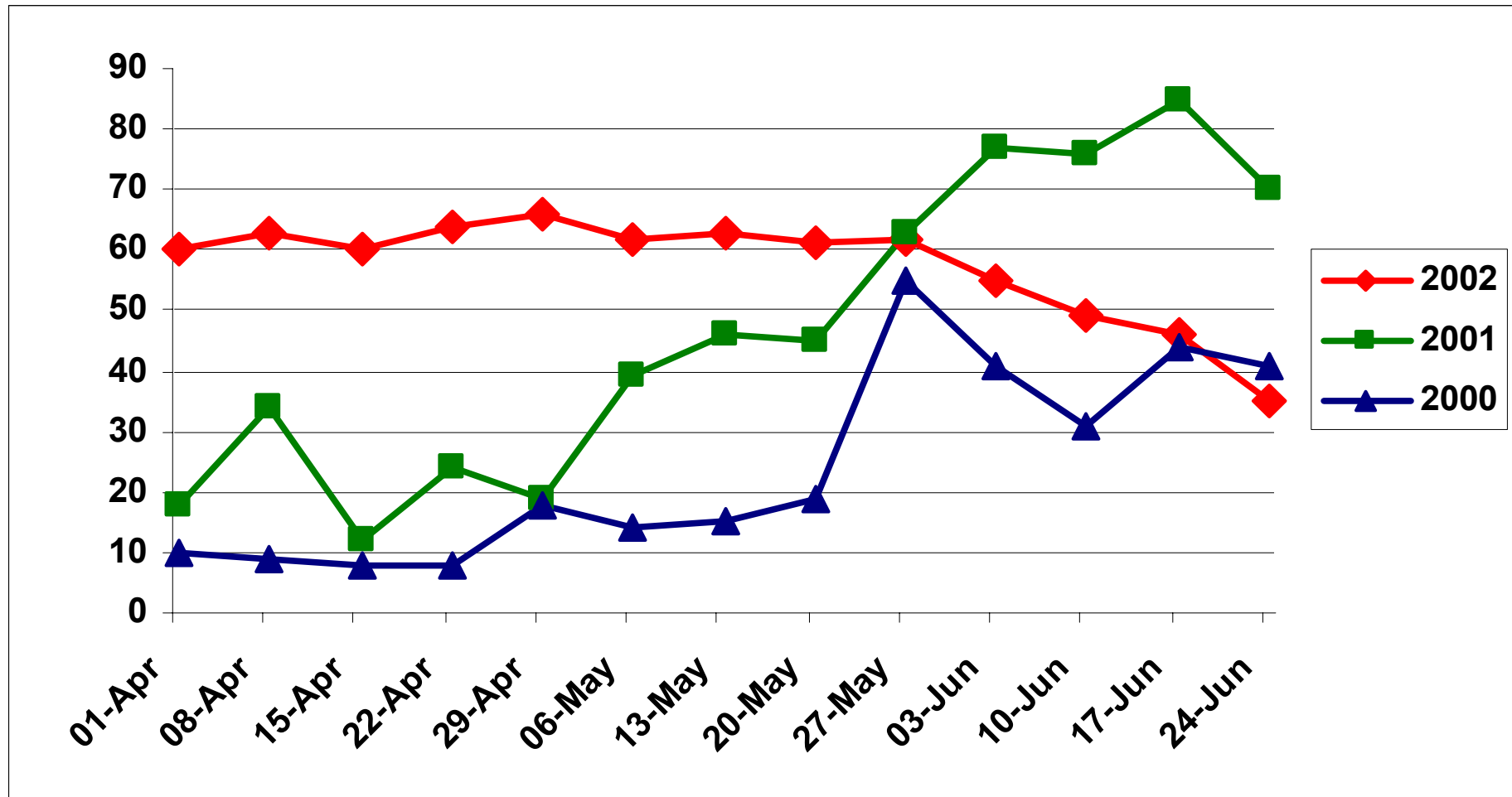
Landsat TM 7 Ch 4 5 3 = RGB

Montana – Spring Wheat Crop Progress



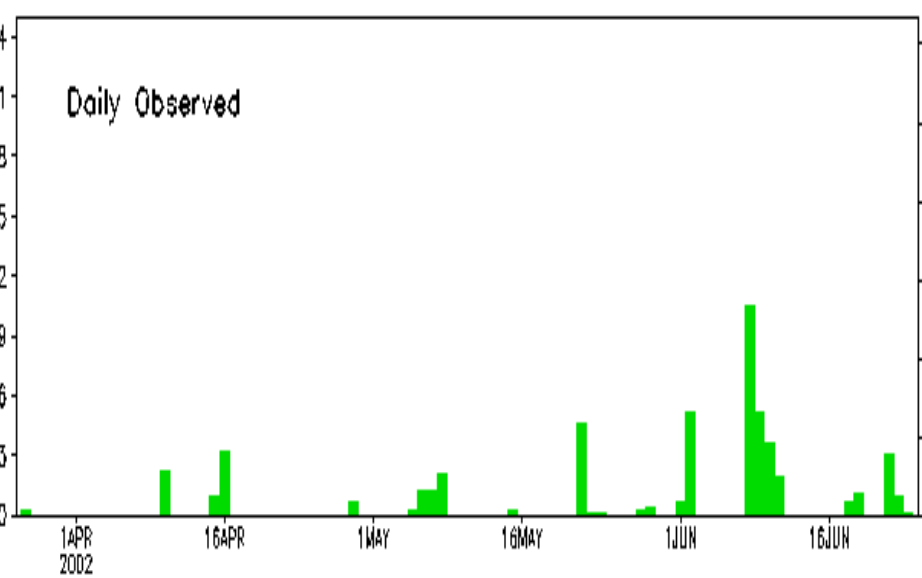
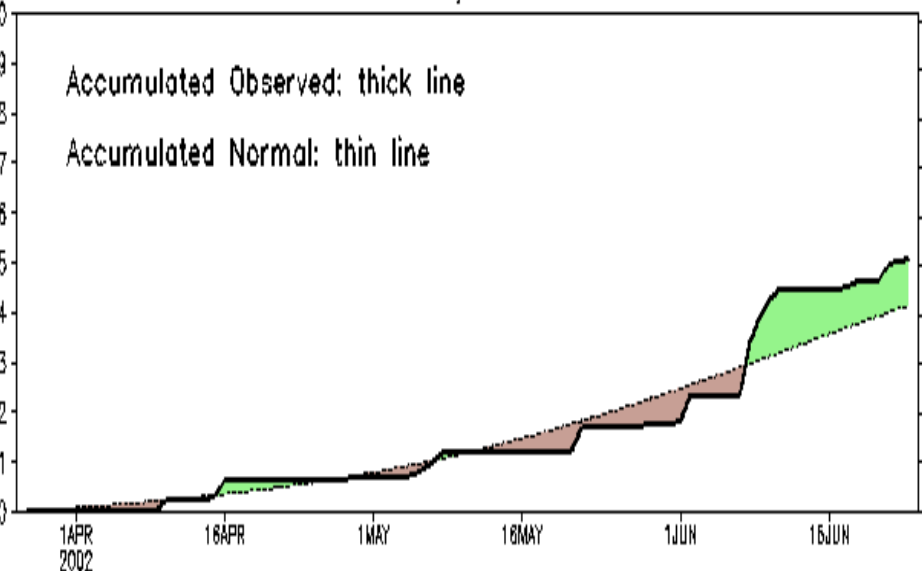
Montana Winter Wheat Condition

Percent Rated Poor - Very Poor



ches

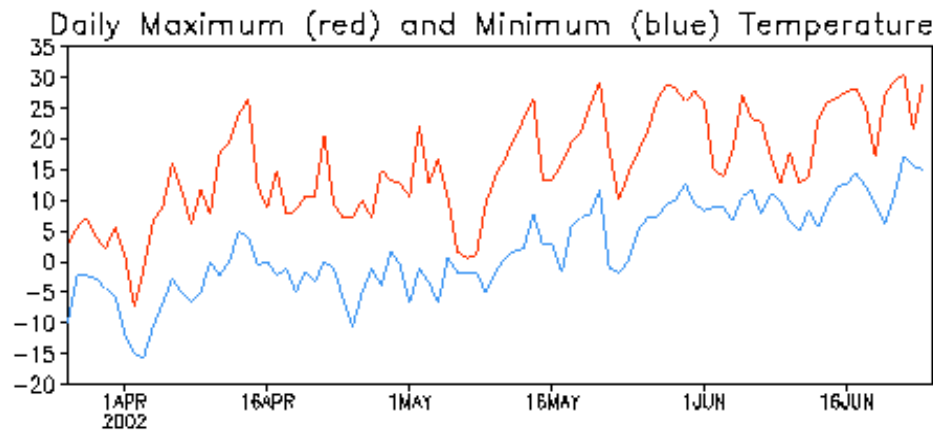
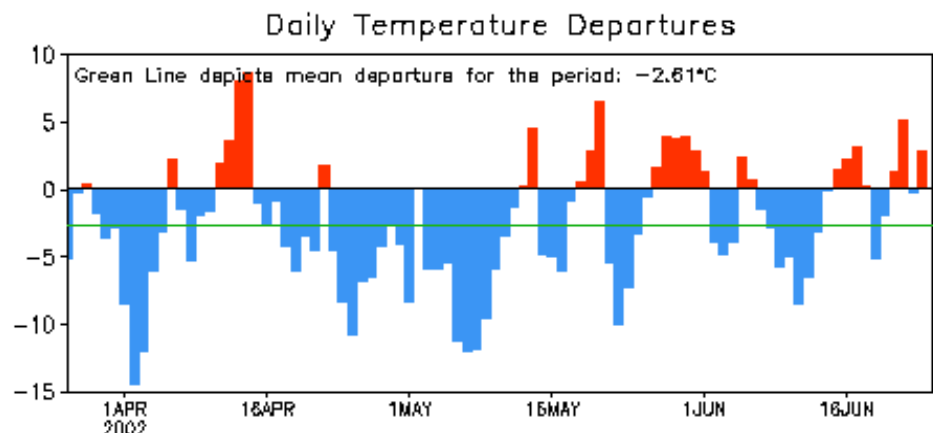
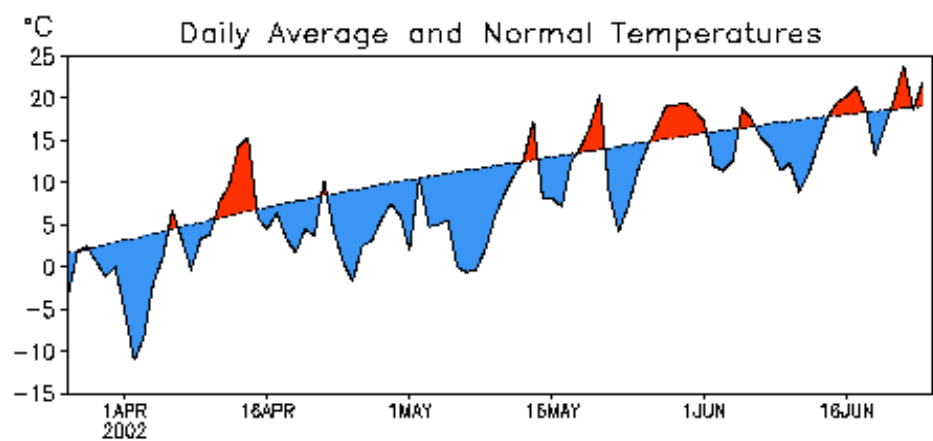
GLASGOW, MONTANA



Data updated through 24 JUN 2002

CLIMATE PREDICTION CENTER/NCEP

GLASGOW, MONTANA

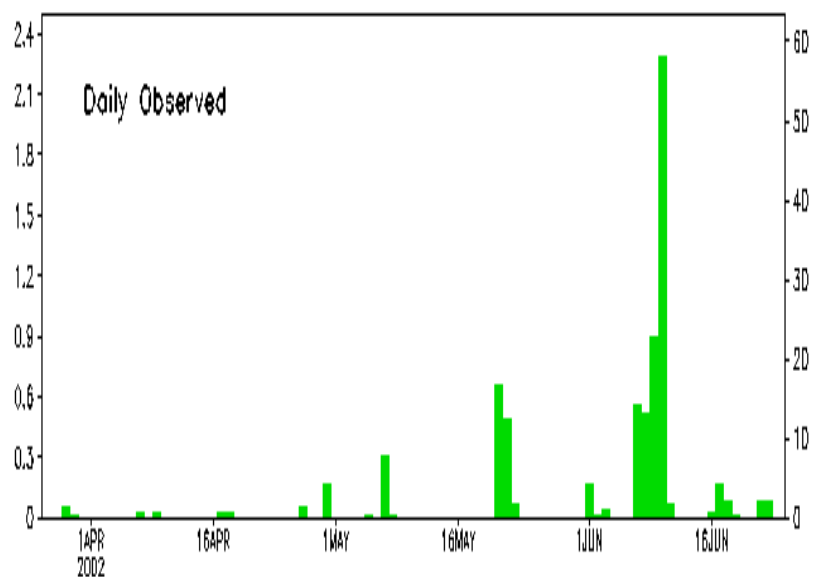
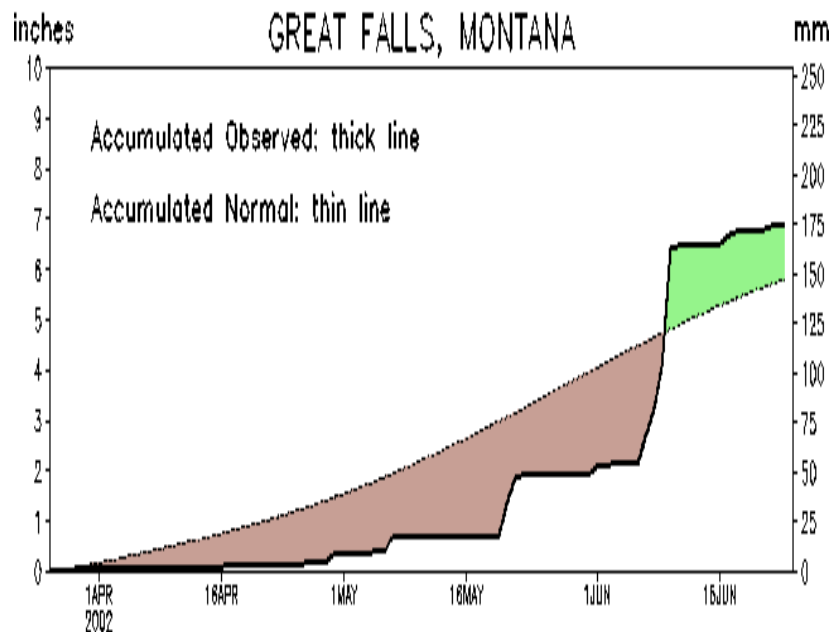


Data updated through 24 JUN 2002

CLIMATE PREDICTION CENTER/N

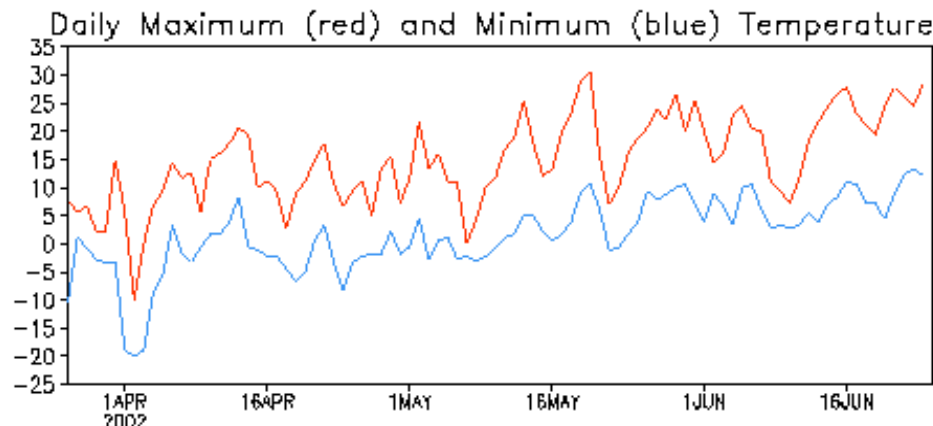
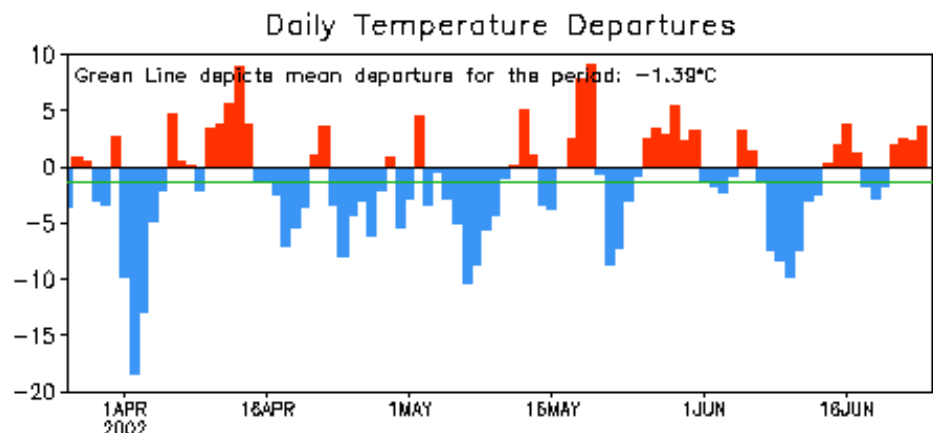
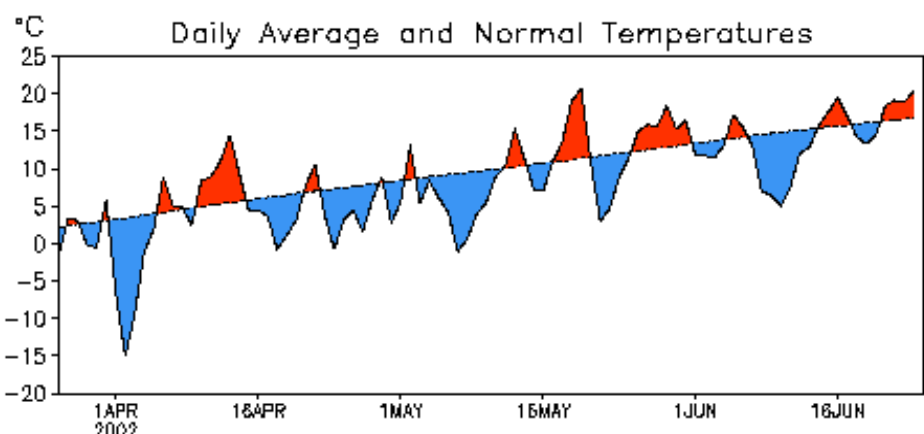
Precipitation

GREAT FALLS, MONTANA



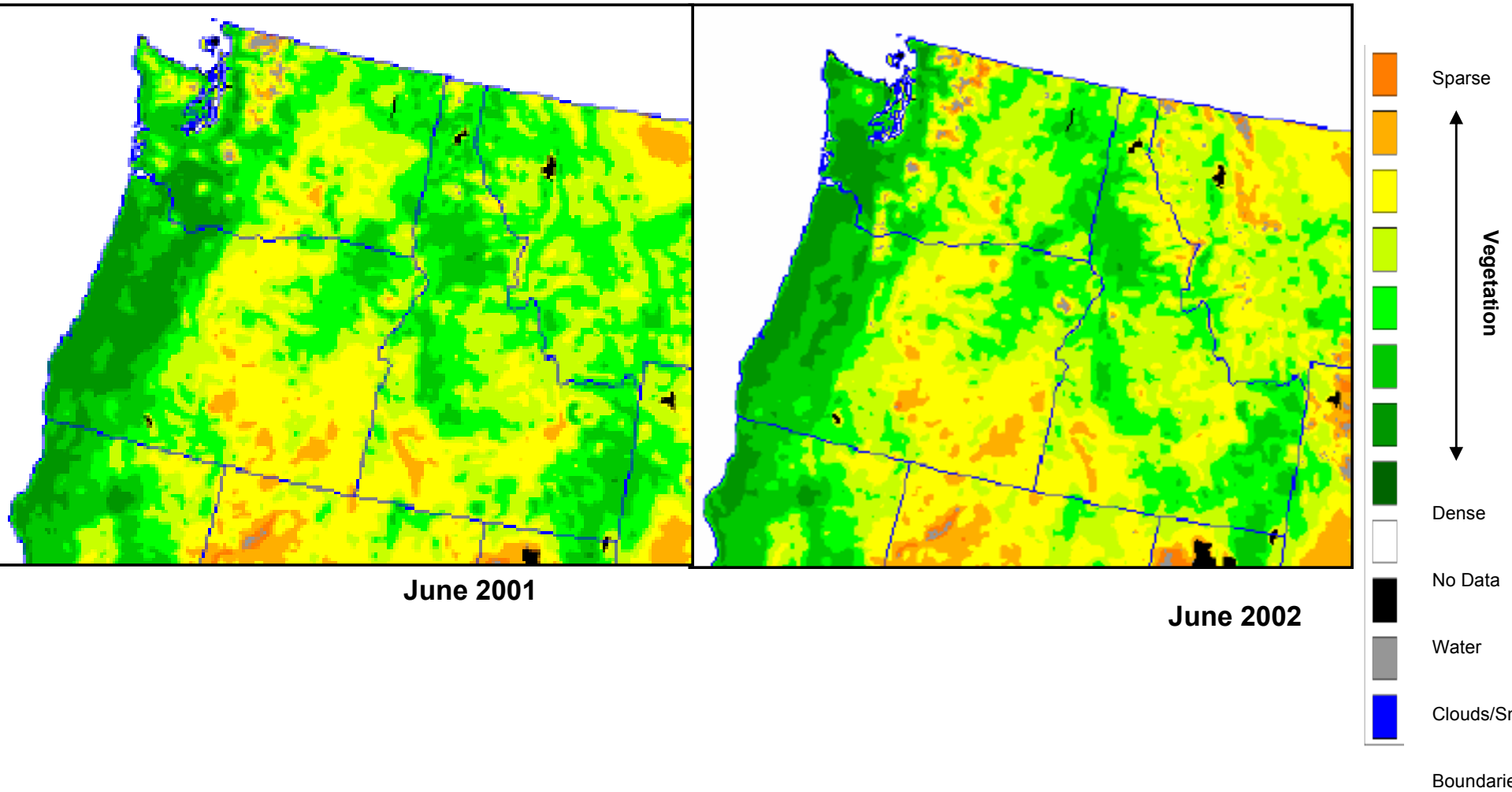
Data updated through 24 JUN 2002

GREAT FALLS, MONTANA



Data updated through 24 JUN 2002

PNW Vegetation Comparison



NDVI Composite – June 1 - 15, 2001
NOAA 16 Polar Orbiter

NDVI Composite – June 1 - 15, 2002
NOAA 16 Polar Orbiter