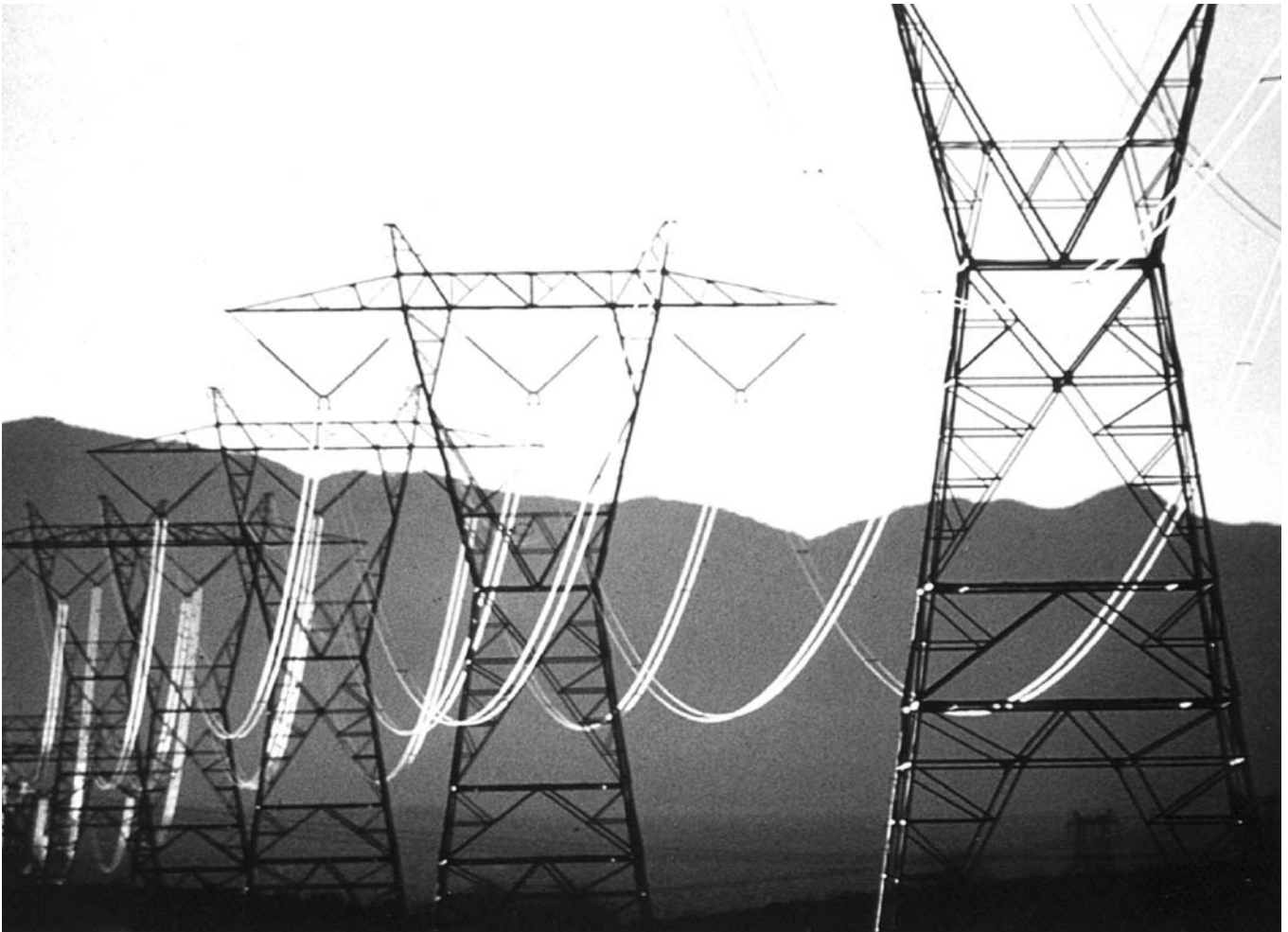


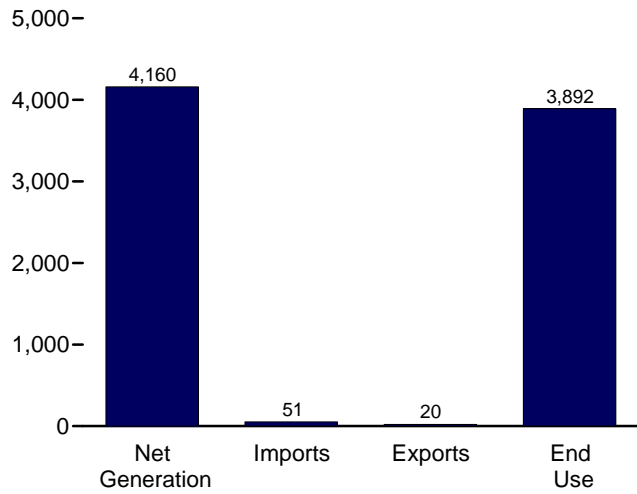
# Electricity



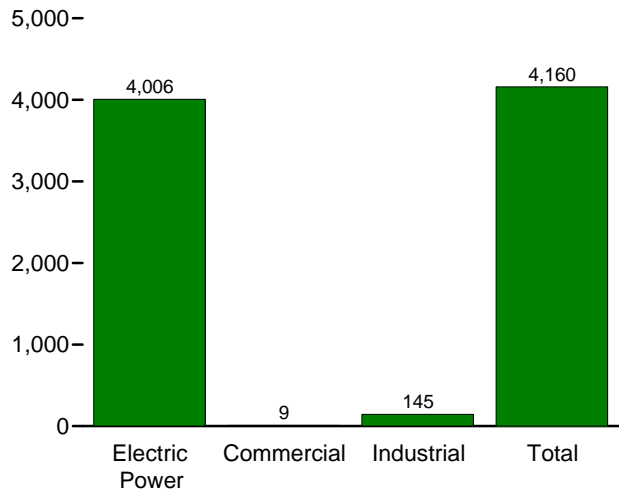
High-tension power lines and towers. Source: U.S. Department of Energy.

**Figure 7.1 Electricity Overview**  
(Billion Kilowatthours)

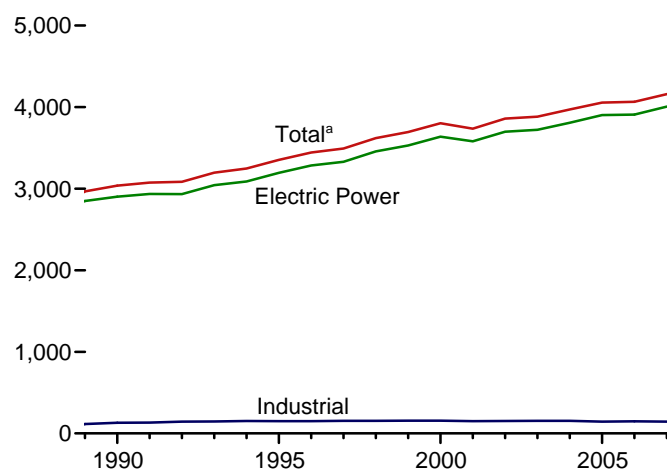
Overview, 2007



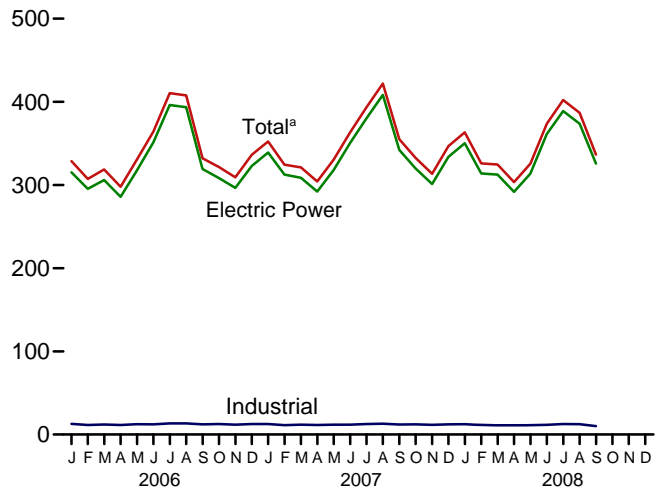
Net Generation, 2007



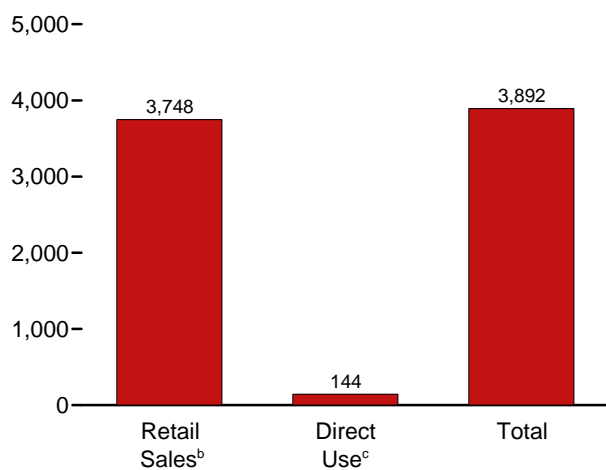
Net Generation by Sector, 1989-2007



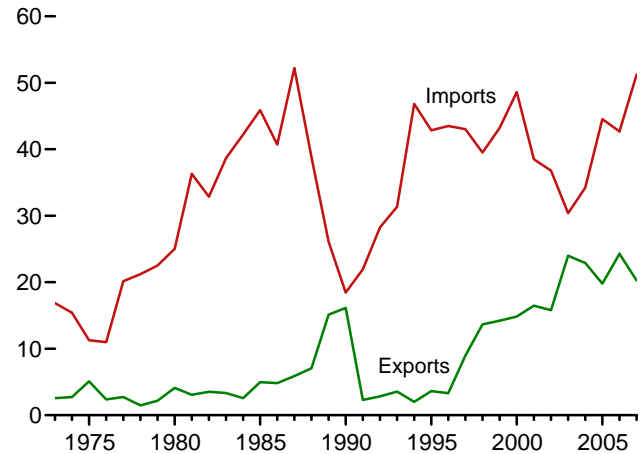
Net Generation by Sector, Monthly



End Use, 2007



Trade, 1973-2007



<sup>a</sup>Includes commercial sector.

<sup>b</sup>Electricity retail sales to ultimate customers reported by electric utilities and other energy service providers.

<sup>c</sup>See "Direct Use" in Glossary.

Note: Because vertical scales differ, graphs should not be compared.

Web Page: <http://www.eia.doe.gov/emeu/mer/elect.html>.

Source: Table 7.1.

**Table 7.1 Electricity Overview**  
(Billion Kilowatthours)

	Net Generation				Trade			T&D Losses <sup>e</sup> and Unaccounted for <sup>f</sup>	End Use		
	Electric Power Sector <sup>a</sup>	Com- mercial Sector <sup>b</sup>	Indus- trial <sup>c</sup>	Total	Imports <sup>d</sup>	Exports <sup>d</sup>	Net Imports <sup>d</sup>		Retail Sales <sup>g</sup>	Direct Use <sup>h</sup>	Total
1973 Total .....	1,861	NA	3	1,864	17	3	14	165	1,713	NA	1,713
1975 Total .....	1,918	NA	3	1,921	11	5	6	180	1,747	NA	1,747
1980 Total .....	2,286	NA	3	2,290	25	4	21	216	2,094	NA	2,094
1985 Total .....	2,470	NA	3	2,473	46	5	41	190	2,324	NA	2,324
1990 Total .....	2,901	6	131	3,038	18	16	2	203	2,713	125	2,837
1995 Total .....	3,194	8	151	3,353	43	4	39	229	3,013	151	3,164
1996 Total .....	3,284	9	151	3,444	43	3	40	231	3,101	153	3,254
1997 Total .....	3,329	9	154	3,492	43	9	34	224	3,146	156	3,302
1998 Total .....	3,457	9	154	3,620	40	14	26	221	3,264	161	3,425
1999 Total .....	3,530	9	156	3,695	43	14	29	240	3,312	172	3,484
2000 Total .....	3,638	8	157	3,802	49	15	34	244	3,421	171	3,592
2001 Total .....	3,580	7	149	3,737	39	16	22	202	3,394	163	3,557
2002 Total .....	3,698	7	153	3,858	37	16	21	248	3,465	166	3,632
2003 Total .....	3,721	7	155	3,883	30	24	6	228	3,494	168	3,662
2004 Total .....	3,808	8	154	3,971	34	23	11	266	3,547	168	3,716
2005 Total .....	3,902	8	145	4,055	45	20	25	269	3,661	150	3,811
2006 January .....	315	1	13	329	4	2	1	13	305	E 12	317
February .....	295	1	11	307	3	2	2	17	281	E 11	292
March .....	306	1	12	319	4	2	2	19	290	E 12	302
April .....	286	1	11	298	3	2	1	20	268	E 11	280
May .....	R 317	1	12	331	4	2	1	33	287	E 12	299
June .....	351	1	12	364	4	2	1	32	322	E 12	334
July .....	396	1	13	410	5	2	3	38	362	E 13	376
August .....	394	1	13	408	5	2	3	29	369	E 13	382
September .....	319	1	12	332	2	2	(s)	3	317	E 12	329
October .....	308	1	13	322	3	2	(s)	18	291	E 12	304
November .....	297	1	12	309	3	2	1	21	277	E 12	289
December .....	323	1	13	336	4	1	2	26	300	E 12	313
Total .....	3,908	8	148	4,065	43	24	18	266	3,670	144	3,817
2007 January .....	339	1	13	352	3	2	2	28	314	E 12	326
February .....	313	1	11	324	4	1	3	16	301	E 11	312
March .....	309	1	12	321	4	2	2	20	291	E 12	303
April .....	292	1	11	304	4	1	3	22	274	E 11	285
May .....	318	1	12	331	5	1	R 3	R 31	291	E 12	303
June .....	350	1	12	363	4	1	3	33	321	E 12	333
July .....	380	1	13	394	5	2	4	34	351	E 12	364
August .....	408	1	13	422	5	2	3	41	372	E 13	385
September .....	342	1	12	355	4	2	1	8	336	E 12	348
October .....	320	1	12	333	R 4	2	2	16	307	E 12	319
November .....	301	1	12	314	4	2	3	20	284	E 12	296
December .....	334	1	12	347	4	2	2	30	306	E 12	318
Total .....	4,006	9	145	4,160	51	20	31	299	3,748	E 144	3,892
2008 January .....	350	1	12	363	5	2	3	27	327	E 12	340
February .....	314	1	11	326	5	2	3	11	307	E 11	318
March .....	313	1	11	325	5	3	2	20	296	E 11	307
April .....	292	1	11	303	4	1	3	16	279	E 11	290
May .....	314	1	11	326	5	3	2	26	291	E 11	302
June .....	361	1	12	374	6	3	3	36	329	E 12	341
July .....	389	1	13	402	6	2	4	31	363	E 13	375
August .....	374	1	12	387	6	1	4	24	355	E 12	367
September .....	326	1	10	337	5	2	3	4	325	E 10	335
9-Month Total .....	3,032	6	104	3,142	47	19	28	195	2,872	E 103	2,975
2007 9-Month Total .....	3,052	6	109	3,167	39	15	24	233	2,851	E 108	2,958
2006 9-Month Total .....	2,980	6	111	3,098	33	18	15	201	2,801	E 110	2,912

<sup>a</sup> Electricity-only and combined-heat-and-power (CHP) plants within the NAICS 22 category whose primary business is to sell electricity, or electricity and heat, to the public. Through 1988, data are for electric utilities only; beginning in 1989, data are for electric utilities and independent power producers.

<sup>b</sup> Commercial combined-heat-and-power (CHP) and commercial electricity-only plants.

<sup>c</sup> Industrial combined-heat-and-power (CHP) and industrial electricity-only plants. Through 1988, data are for industrial hydroelectric power only.

<sup>d</sup> Electricity transmitted across U.S. borders. Net imports equal imports minus exports.

<sup>e</sup> Transmission and distribution losses (electricity losses that occur between the point of generation and delivery to the customer). See Note 2, "Electrical System Energy Losses," at end of Section 2.

<sup>f</sup> Data collection frame differences and nonsampling error.

<sup>g</sup> Electricity retail sales to ultimate customers by electric utilities and, beginning in 1996, other energy service providers.

<sup>h</sup> Use of electricity that is 1) self-generated, 2) produced by either the same entity that consumes the power or an affiliate, and 3) used in direct support of a service or industrial process located within the same facility or group of facilities that house the generating equipment. Direct use is exclusive of station use.

R=Revised. E=Estimate. NA=Not available. (s)=Less than 0.5 billion kilowatthours.

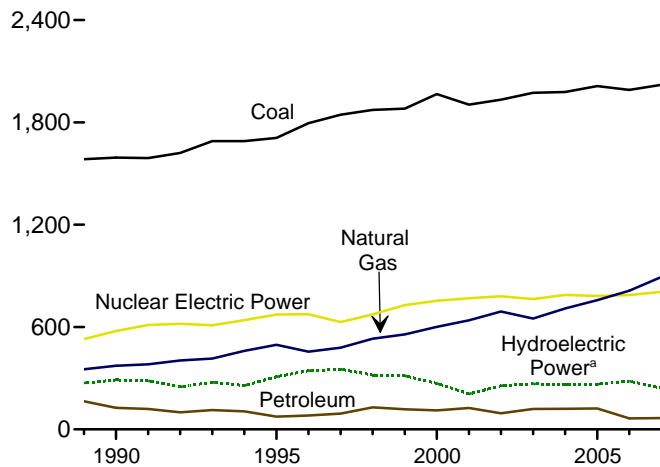
Notes: • See Note, "Classification of Power Plants Into Energy-Use Sectors," at end of section. • Totals may not equal sum of components due to independent rounding. • Geographic coverage is the 50 States and the District of Columbia.

Web Page: See <http://www.eia.doe.gov/emeu/mer/elect.html> for all available data beginning in 1973.

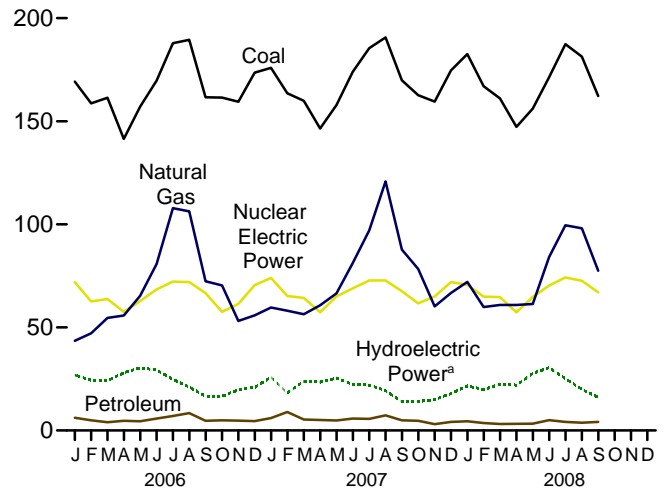
Sources: See end of section.

**Figure 7.2 Electricity Net Generation**  
(Billion Kilowatthours)

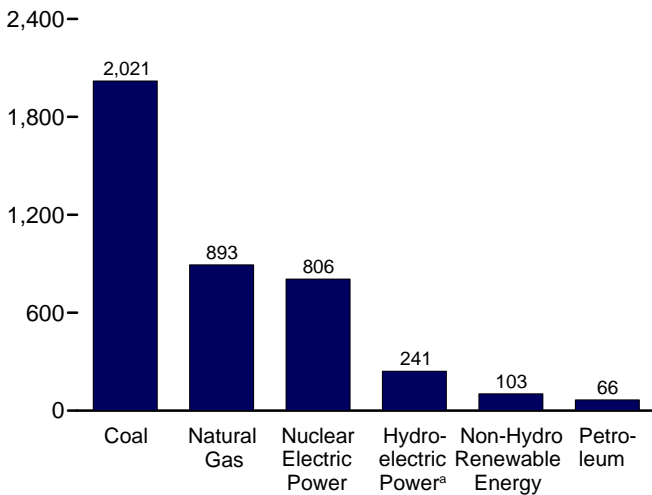
Total (All Sectors), Major Sources, 1989-2007



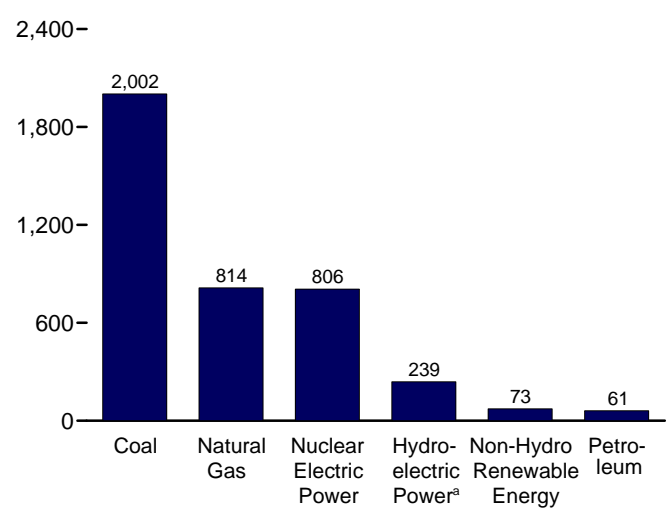
Total (All Sectors), Major Sources, Monthly



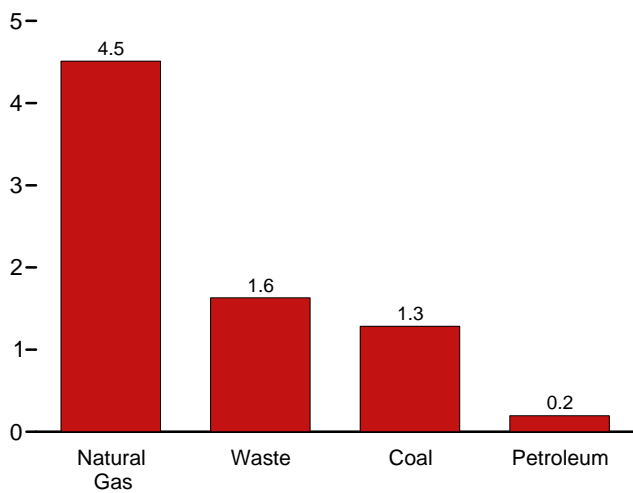
Total (All Sectors), Major Sources, 2007



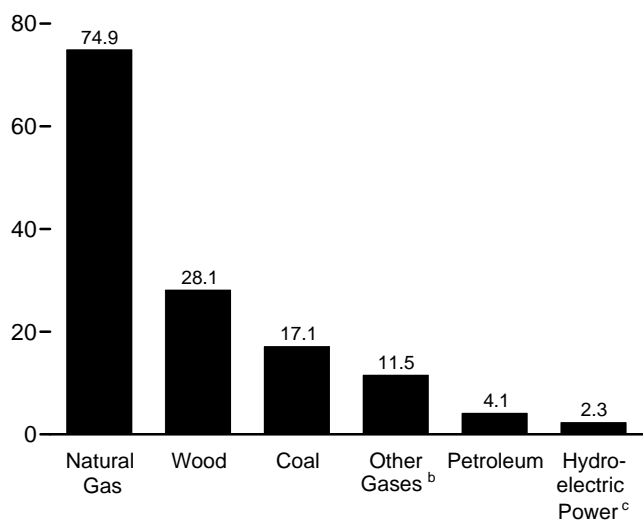
Electric Power Sector, Major Sources, 2007



Commercial Sector, Major Sources, 2007



Industrial Sector, Major Sources, 2007



<sup>a</sup>Conventional and pumped storage hydroelectric power.

<sup>b</sup>Blast furnace gas, propane gas, and other manufactured and waste gases derived from fossil fuels.

<sup>c</sup>Conventional hydroelectric power.

Note: Because vertical scales differ, graphs should not be compared.

Web Page: <http://www.eia.doe.gov/emeu/mer/elect.html>.

Sources: Tables 7.2a, 7.2b, and 7.2c.

**Table 7.2a Electricity Net Generation: Total (All Sectors)**

(Sum of Tables 7.2b and 7.2c; Million Kilowatthours)

	Fossil Fuels				Nuclear Electric Power	Hydro-electric Pumped Storage <sup>e</sup>	Renewable Energy						Total <sup>i</sup>
	Coal <sup>a</sup>	Petroleum <sup>b</sup>	Natural Gas <sup>c</sup>	Other Gases <sup>d</sup>			Conventional Hydro-electric Power	Biomass		Geo-thermal	Solar/PV <sup>h</sup>	Wind	
								Wood <sup>f</sup>	Waste <sup>g</sup>				
<b>1973 Total</b> .....	<b>847,651</b>	<b>314,343</b>	<b>340,858</b>	<b>NA</b>	<b>83,479</b>	(j)	<b>275,431</b>	<b>130</b>	<b>198</b>	<b>1,966</b>	<b>NA</b>	<b>NA</b>	<b>1,864,057</b>
<b>1975 Total</b> .....	<b>852,786</b>	<b>289,095</b>	<b>299,778</b>	<b>NA</b>	<b>172,505</b>	(j)	<b>303,153</b>	<b>18</b>	<b>174</b>	<b>3,246</b>	<b>NA</b>	<b>NA</b>	<b>1,920,755</b>
<b>1980 Total</b> .....	<b>1,161,562</b>	<b>245,994</b>	<b>346,240</b>	<b>NA</b>	<b>251,116</b>	(j)	<b>279,182</b>	<b>275</b>	<b>158</b>	<b>5,073</b>	<b>NA</b>	<b>NA</b>	<b>2,289,600</b>
<b>1985 Total</b> .....	<b>1,402,128</b>	<b>100,202</b>	<b>291,946</b>	<b>NA</b>	<b>383,691</b>	(j)	<b>284,311</b>	<b>743</b>	<b>640</b>	<b>9,325</b>	<b>11</b>	<b>6</b>	<b>2,473,002</b>
<b>1990 Total</b> <sup>k</sup> .....	<b>1,594,011</b>	<b>126,621</b>	<b>372,765</b>	<b>10,383</b>	<b>576,862</b>	-3,508	<b>292,866</b>	<b>32,522</b>	<b>13,260</b>	<b>15,434</b>	<b>367</b>	<b>2,789</b>	<b>3,037,988</b>
<b>1995 Total</b> .....	<b>1,709,426</b>	<b>74,554</b>	<b>496,058</b>	<b>13,870</b>	<b>673,402</b>	-2,725	<b>310,833</b>	<b>36,521</b>	<b>20,405</b>	<b>13,378</b>	<b>497</b>	<b>3,164</b>	<b>3,353,487</b>
<b>1996 Total</b> .....	<b>1,795,196</b>	<b>81,411</b>	<b>455,056</b>	<b>14,356</b>	<b>674,729</b>	-3,088	<b>347,162</b>	<b>36,800</b>	<b>20,911</b>	<b>14,329</b>	<b>521</b>	<b>3,234</b>	<b>3,444,188</b>
<b>1997 Total</b> .....	<b>1,845,016</b>	<b>92,555</b>	<b>479,399</b>	<b>13,351</b>	<b>628,644</b>	-4,040	<b>356,453</b>	<b>36,948</b>	<b>21,709</b>	<b>14,726</b>	<b>511</b>	<b>3,288</b>	<b>3,492,172</b>
<b>1998 Total</b> .....	<b>1,873,516</b>	<b>128,800</b>	<b>531,257</b>	<b>13,492</b>	<b>673,702</b>	-4,467	<b>323,336</b>	<b>36,338</b>	<b>22,448</b>	<b>14,774</b>	<b>502</b>	<b>3,026</b>	<b>3,620,295</b>
<b>1999 Total</b> .....	<b>1,881,087</b>	<b>118,061</b>	<b>556,396</b>	<b>14,126</b>	<b>728,254</b>	-6,097	<b>319,536</b>	<b>37,041</b>	<b>22,572</b>	<b>14,827</b>	<b>495</b>	<b>4,488</b>	<b>3,694,810</b>
<b>2000 Total</b> .....	<b>1,966,265</b>	<b>111,221</b>	<b>601,038</b>	<b>13,955</b>	<b>753,893</b>	-5,539	<b>275,573</b>	<b>37,595</b>	<b>23,131</b>	<b>14,093</b>	<b>493</b>	<b>5,593</b>	<b>3,802,105</b>
<b>2001 Total</b> .....	<b>1,903,956</b>	<b>124,880</b>	<b>639,129</b>	<b>9,039</b>	<b>768,826</b>	-8,823	<b>216,961</b>	<b>35,200</b>	<b>14,548</b>	<b>13,741</b>	<b>543</b>	<b>6,737</b>	<b>3,736,644</b>
<b>2002 Total</b> .....	<b>1,933,130</b>	<b>94,567</b>	<b>691,006</b>	<b>11,463</b>	<b>780,064</b>	-8,743	<b>264,329</b>	<b>38,665</b>	<b>15,044</b>	<b>14,491</b>	<b>555</b>	<b>10,354</b>	<b>3,858,452</b>
<b>2003 Total</b> .....	<b>1,973,737</b>	<b>119,406</b>	<b>649,908</b>	<b>15,600</b>	<b>763,733</b>	-8,535	<b>275,806</b>	<b>37,529</b>	<b>15,812</b>	<b>14,424</b>	<b>534</b>	<b>11,187</b>	<b>3,883,185</b>
<b>2004 Total</b> .....	<b>1,978,620</b>	<b>120,771</b>	<b>708,854</b>	<b>16,766</b>	<b>788,528</b>	-8,488	<b>268,417</b>	<b>37,576</b>	<b>15,497</b>	<b>14,811</b>	<b>575</b>	<b>14,144</b>	<b>3,970,555</b>
<b>2005 Total</b> .....	<b>2,013,179</b>	<b>122,522</b>	<b>757,974</b>	<b>16,317</b>	<b>781,986</b>	-6,558	<b>270,321</b>	<b>38,681</b>	<b>15,479</b>	<b>14,692</b>	<b>550</b>	<b>17,811</b>	<b>4,055,423</b>
<b>2006</b>													
<b>January</b> .....	169,258	6,144	43,529	1,326	71,912	-533	27,437	3,426	1,391	1,230	13	2,383	328,658
<b>February</b> .....	158,648	4,934	47,152	1,260	62,616	-447	24,762	3,044	1,273	1,111	20	1,922	307,333
<b>March</b> .....	161,355	4,035	54,585	1,421	63,721	-435	24,625	3,214	1,342	1,261	33	2,359	318,730
<b>April</b> .....	141,456	4,708	55,795	1,352	57,567	-587	28,556	2,968	1,228	1,129	52	2,472	297,858
<b>May</b> .....	157,051	4,440	65,302	1,440	62,776	-444	30,818	3,024	1,371	1,096	71	2,459	330,616
<b>June</b> .....	169,726	5,787	80,787	1,326	68,391	-423	29,757	3,126	1,328	1,199	70	2,052	364,260
<b>July</b> .....	187,860	7,024	107,862	1,374	72,186	-638	25,439	3,419	1,401	1,261	62	1,955	410,421
<b>August</b> .....	189,488	8,388	106,289	1,474	72,016	-695	21,728	3,466	1,388	1,289	83	1,655	407,763
<b>September</b> .....	161,630	4,661	72,402	1,299	66,642	-629	17,201	3,241	1,309	1,219	54	1,879	332,055
<b>October</b> .....	161,434	4,907	70,351	1,358	57,509	-507	17,055	3,193	1,336	1,275	32	2,442	321,567
<b>November</b> .....	159,472	4,760	53,161	1,216	61,392	-553	20,272	3,166	1,360	1,207	16	2,540	309,159
<b>December</b> .....	173,547	4,577	55,829	1,215	70,490	-667	21,596	3,360	1,385	1,290	3	2,472	336,283
<b>Total</b> .....	<b>1,990,926</b>	<b>64,364</b>	<b>813,044</b>	<b>16,060</b>	<b>787,219</b>	<b>-6,558</b>	<b>289,246</b>	<b>38,649</b>	<b>16,110</b>	<b>14,568</b>	<b>508</b>	<b>26,589</b>	<b>4,064,702</b>
<b>2007</b>													
<b>January</b> .....	175,919	5,986	59,653	1,322	74,006	-572	26,405	3,288	1,446	1,306	13	2,459	352,369
<b>February</b> .....	163,590	8,959	58,087	1,173	65,225	-447	18,648	3,046	1,320	1,193	19	2,541	324,415
<b>March</b> .....	159,904	5,333	56,363	1,419	64,305	-458	24,272	3,100	1,465	1,216	48	3,061	321,198
<b>April</b> .....	146,516	5,056	60,729	1,337	57,301	-374	23,854	3,043	1,283	1,165	54	3,194	304,309
<b>May</b> .....	157,841	4,882	66,469	1,341	65,025	-547	25,930	3,070	1,376	1,168	84	2,858	330,701
<b>June</b> .....	173,990	5,762	81,185	1,361	68,923	-523	22,860	3,204	1,449	1,250	84	2,395	363,084
<b>July</b> .....	185,433	5,593	97,046	1,366	72,729	-595	22,623	3,349	1,491	1,264	86	1,928	393,503
<b>August</b> .....	190,681	7,327	120,761	1,339	72,751	-651	20,002	3,382	1,461	1,267	75	2,446	422,053
<b>September</b> .....	169,839	4,904	87,741	1,266	67,582	-756	14,667	3,247	1,432	1,230	68	2,641	354,981
<b>October</b> .....	162,642	4,714	78,321	1,164	61,690	-786	14,826	3,223	1,261	1,278	48	3,056	332,609
<b>November</b> .....	159,525	3,042	60,159	1,168	64,969	-685	15,727	3,239	1,416	1,223	23	2,705	313,561
<b>December</b> .....	174,691	4,150	66,696	1,160	71,983	-601	18,498	3,324	1,485	1,278	3	2,859	346,731
<b>Total</b> .....	<b>2,020,572</b>	<b>65,708</b>	<b>893,211</b>	<b>15,414</b>	<b>806,487</b>	<b>-6,994</b>	<b>248,312</b>	<b>38,515</b>	<b>16,885</b>	<b>14,839</b>	<b>606</b>	<b>32,143</b>	<b>4,159,514</b>
<b>2008</b>													
<b>January</b> .....	182,579	4,449	72,090	1,249	70,686	-754	22,358	3,337	1,371	1,187	15	3,737	363,268
<b>February</b> .....	167,000	3,627	59,902	1,126	64,936	-375	20,234	3,075	1,220	1,075	33	3,275	325,906
<b>March</b> .....	161,102	3,111	60,904	1,611	64,683	-522	22,907	3,165	1,374	1,218	75	4,103	324,706
<b>April</b> .....	147,249	3,248	60,870	1,460	57,281	-98	22,106	2,940	1,465	1,200	87	4,487	303,455
<b>May</b> .....	156,098	3,264	61,350	1,358	64,794	-587	28,239	3,013	1,472	1,254	96	4,450	325,697
<b>June</b> .....	171,287	4,982	84,075	1,323	70,268	-372	30,803	3,166	1,462	1,261	120	4,349	373,632
<b>July</b> .....	187,377	4,132	99,535	1,437	74,266	-799	25,873	3,349	1,434	1,281	105	3,236	402,139
<b>August</b> .....	181,313	3,726	98,034	1,440	72,573	-648	20,651	3,390	1,425	1,267	99	2,599	386,760
<b>September</b> .....	162,207	4,114	77,490	791	67,003	-513	16,530	3,167	1,303	1,225	86	2,391	336,584
<b>9-Month Total</b> .....	<b>1,516,211</b>	<b>34,654</b>	<b>674,250</b>	<b>11,795</b>	<b>606,491</b>	<b>-4,668</b>	<b>209,702</b>	<b>28,602</b>	<b>12,525</b>	<b>10,967</b>	<b>717</b>	<b>32,627</b>	<b>3,142,149</b>
<b>2007 9-Month Total</b> .....	<b>1,523,714</b>	<b>53,802</b>	<b>688,035</b>	<b>11,923</b>	<b>607,846</b>	<b>-4,922</b>	<b>199,261</b>	<b>28,729</b>	<b>12,723</b>	<b>11,060</b>	<b>532</b>	<b>23,522</b>	<b>3,166,614</b>
<b>2006 9-Month Total</b> .....	<b>1,496,473</b>	<b>50,120</b>	<b>633,703</b>	<b>12,273</b>	<b>597,827</b>	<b>-4,831</b>	<b>230,324</b>	<b>28,929</b>	<b>12,029</b>	<b>10,795</b>	<b>457</b>	<b>19,135</b>	<b>3,097,693</b>

<sup>a</sup> Anthracite, bituminous coal, subbituminous coal, lignite, waste coal, and coal synfuel.

<sup>b</sup> Distillate fuel oil, residual fuel oil, petroleum coke, jet fuel, kerosene, other petroleum, and waste oil.

<sup>c</sup> Natural gas, plus a small amount of supplemental gaseous fuels.

<sup>d</sup> Blast furnace gas, propane gas, and other manufactured and waste gases derived from fossil fuels.

<sup>e</sup> Pumped storage facility production minus energy used for pumping.

<sup>f</sup> Wood and wood-derived fuels.

<sup>g</sup> Municipal solid waste from biogenic sources, landfill gas, sludge waste, agricultural byproducts, and other biomass. Through 2000, also includes non-renewable waste (municipal solid waste from non-biogenic sources, and tire-derived fuels).

<sup>h</sup> Solar thermal and photovoltaic energy.

<sup>i</sup> Includes batteries, chemicals, hydrogen, pitch, purchased steam, sulfur, miscellaneous technologies, and, beginning in 2001, non-renewable waste (municipal solid waste from non-biogenic sources, and tire-derived fuels).

<sup>j</sup> Included in "Conventional Hydroelectric Power."

<sup>k</sup> Through 1988, all data except hydroelectric are for electric utilities only; hydroelectric data through 1988 include industrial plants as well as electric utilities. Beginning in 1989, data are for electric utilities, independent power producers, commercial plants, and industrial plants.

NA=Not available.

Notes: • Totals may not equal sum of components due to independent rounding. • Geographic coverage is the 50 States and the District of Columbia.

Web Page: See <http://www.eia.doe.gov/emeu/mer/elect.html> for all available data beginning in 1973.

Sources: See sources for Tables 7.2b and 7.2c.

**Table 7.2b Electricity Net Generation: Electric Power Sector**

(Subset of Table 7.2a; Million Kilowatthours)

	Fossil Fuels				Nuclear Electric Power	Hydro-electric Pumped Storage <sup>e</sup>	Renewable Energy						Total <sup>i</sup>
	Coal <sup>a</sup>	Petroleum <sup>b</sup>	Natural Gas <sup>c</sup>	Other Gases <sup>d</sup>			Conventional Hydro-electric Power	Biomass		Geo-thermal	Solar/PV <sup>h</sup>	Wind	
								Wood <sup>f</sup>	Waste <sup>g</sup>				
<b>1973 Total</b> .....	847,651	314,343	340,858	NA	83,479	(j)	272,083	130	198	1,966	NA	NA	1,860,710
<b>1975 Total</b> .....	852,786	289,095	299,778	NA	172,505	(j)	300,047	18	174	3,246	NA	NA	1,917,649
<b>1980 Total</b> .....	1,161,562	245,994	346,240	NA	251,116	(j)	276,021	275	158	5,073	NA	NA	2,286,439
<b>1985 Total</b> .....	1,402,128	100,202	291,946	NA	383,691	(j)	281,149	743	640	9,325	11	6	2,469,841
<b>1990 Total<sup>k</sup></b> .....	1,572,109	118,864	309,486	621	576,862	-3,508	289,753	7,032	11,500	15,434	367	2,789	2,901,322
<b>1995 Total</b> .....	1,686,056	68,146	419,179	1,927	673,402	-2,725	305,410	7,597	17,986	13,378	497	3,164	3,194,230
<b>1996 Total</b> .....	1,771,973	74,783	378,757	1,341	674,729	-3,088	341,159	8,386	17,816	14,329	521	3,234	3,284,141
<b>1997 Total</b> .....	1,820,762	86,479	399,596	1,533	628,644	-4,040	350,648	8,680	18,485	14,726	511	3,288	3,329,375
<b>1998 Total</b> .....	1,850,193	122,211	449,293	2,315	673,702	-4,467	317,867	8,608	19,233	14,774	502	3,026	3,457,416
<b>1999 Total</b> .....	1,858,618	111,539	472,996	1,607	728,254	-6,097	314,663	8,961	19,493	14,827	495	4,488	3,529,982
<b>2000 Total</b> .....	1,943,111	105,192	517,978	2,028	753,893	-5,539	271,338	8,916	20,307	14,093	493	5,593	3,637,529
<b>2001 Total</b> .....	1,882,826	119,149	554,940	586	768,826	-8,823	213,749	8,294	12,944	13,741	543	6,737	3,580,053
<b>2002 Total</b> .....	1,910,613	89,733	607,683	1,970	780,064	-8,743	260,491	9,009	13,145	14,491	555	10,354	3,698,458
<b>2003 Total</b> .....	1,952,714	113,697	567,303	2,647	763,733	-8,535	271,512	9,528	13,808	14,424	534	11,187	3,721,159
<b>2004 Total</b> .....	1,957,194	114,692	627,394	3,026	788,528	-8,488	265,064	9,727	13,130	14,811	575	14,144	3,808,360
<b>2005 Total</b> .....	1,992,060	116,767	683,316	3,960	781,986	-6,558	267,040	10,568	13,039	14,692	550	17,811	3,902,192
<b>2006 January</b> .....	167,478	5,706	36,940	331	71,912	-533	27,067	925	1,194	1,230	13	2,383	315,254
February .....	157,019	4,539	41,285	283	62,616	-447	24,469	862	1,095	1,111	20	1,922	295,333
March .....	159,599	3,644	48,426	335	63,721	-435	24,402	899	1,188	1,261	33	2,359	306,041
April .....	139,729	4,365	50,051	324	57,567	-587	28,361	686	1,054	1,129	52	2,472	285,788
May .....	155,291	4,094	58,671	359	62,776	-444	30,628	760	1,171	1,096	71	2,459	317,522
June .....	167,907	5,447	74,192	347	68,391	-423	29,571	841	1,155	1,199	70	2,052	351,360
July .....	185,953	6,668	100,539	285	72,186	-638	25,216	919	1,217	1,261	62	1,955	396,263
August .....	187,578	7,994	98,893	394	72,016	-695	21,546	976	1,211	1,289	83	1,655	393,589
September .....	159,906	4,305	65,905	327	66,642	-629	16,996	866	1,135	1,219	54	1,879	319,181
October .....	159,684	4,605	63,526	324	57,509	-507	16,774	844	1,150	1,275	32	2,442	308,218
November .....	157,819	4,405	46,953	315	61,392	-553	19,903	852	1,173	1,207	16	2,540	296,571
December .....	171,812	4,154	49,062	317	70,490	-667	21,320	902	1,191	1,290	3	2,472	322,957
<b>Total</b> .....	<b>1,969,776</b>	<b>59,926</b>	<b>734,445</b>	<b>3,940</b>	<b>787,219</b>	<b>-6,558</b>	<b>286,254</b>	<b>10,332</b>	<b>13,934</b>	<b>14,568</b>	<b>508</b>	<b>26,589</b>	<b>3,908,077</b>
<b>2007 January</b> .....	174,363	5,581	52,809	354	74,006	-572	25,988	928	1,256	1,306	13	2,459	339,100
February .....	162,144	8,541	52,023	316	65,225	-447	18,433	891	1,153	1,193	19	2,541	312,564
March .....	158,293	4,923	50,151	338	64,305	-458	24,051	847	1,262	1,216	48	3,061	308,636
April .....	145,057	4,660	54,757	307	57,301	-374	23,645	711	1,135	1,165	54	3,194	292,179
May .....	156,280	4,493	60,109	305	65,025	-547	25,740	791	1,197	1,168	84	2,858	318,095
June .....	172,436	5,425	74,733	343	68,923	-523	22,637	888	1,252	1,250	84	2,395	350,467
July .....	183,806	5,259	90,115	331	72,729	-595	22,482	900	1,276	1,264	86	1,928	380,189
August .....	189,024	6,976	113,383	347	72,751	-651	19,783	942	1,266	1,267	75	2,446	408,235
September .....	168,307	4,636	80,961	310	67,582	-756	14,560	872	1,244	1,230	68	2,641	342,234
October .....	161,114	4,425	71,402	301	61,690	-786	14,707	838	1,065	1,278	48	3,056	319,740
November .....	158,102	2,726	53,606	315	64,969	-685	15,611	872	1,218	1,223	23	2,705	301,212
December .....	173,217	3,803	59,791	318	71,983	-601	18,335	903	1,286	1,278	3	2,859	333,830
<b>Total</b> .....	<b>2,002,141</b>	<b>61,449</b>	<b>813,840</b>	<b>3,884</b>	<b>806,487</b>	<b>-6,994</b>	<b>245,973</b>	<b>10,381</b>	<b>14,610</b>	<b>14,839</b>	<b>606</b>	<b>32,143</b>	<b>4,006,482</b>
<b>2008 January</b> .....	181,028	4,167	64,786	475	70,686	-754	22,101	968	1,186	1,187	15	3,737	350,160
February .....	165,575	3,392	53,263	400	64,936	-375	19,942	881	1,043	1,075	33	3,275	313,948
March .....	159,462	2,875	54,764	540	64,683	-522	22,611	910	1,193	1,218	75	4,103	312,571
April .....	145,680	3,018	55,010	475	57,281	-98	21,857	777	1,250	1,200	87	4,487	291,818
May .....	154,468	3,084	55,083	507	64,794	-587	28,003	758	1,254	1,254	96	4,450	313,748
June .....	169,699	4,734	77,466	414	70,268	-372	30,684	851	1,241	1,241	120	4,349	361,315
July .....	185,646	3,886	92,214	447	74,266	-799	25,771	952	1,219	1,281	105	3,236	388,813
August .....	179,666	3,499	90,835	440	72,573	-648	20,554	982	1,222	1,267	99	2,599	373,684
September .....	160,600	3,855	71,985	187	67,003	-513	16,447	920	1,117	1,225	86	2,391	325,842
<b>9-Month Total</b> .....	<b>1,501,824</b>	<b>32,510</b>	<b>615,406</b>	<b>3,884</b>	<b>606,491</b>	<b>-4,668</b>	<b>207,970</b>	<b>7,999</b>	<b>10,725</b>	<b>10,967</b>	<b>717</b>	<b>32,627</b>	<b>3,031,900</b>
<b>2007 9-Month Total</b> .....	<b>1,509,708</b>	<b>50,494</b>	<b>629,041</b>	<b>2,950</b>	<b>607,846</b>	<b>-4,922</b>	<b>197,320</b>	<b>7,768</b>	<b>11,040</b>	<b>11,060</b>	<b>532</b>	<b>23,522</b>	<b>3,051,700</b>
<b>2006 9-Month Total</b> .....	<b>1,480,461</b>	<b>46,761</b>	<b>574,904</b>	<b>2,984</b>	<b>597,827</b>	<b>-4,831</b>	<b>228,257</b>	<b>7,734</b>	<b>10,420</b>	<b>10,795</b>	<b>457</b>	<b>19,135</b>	<b>2,980,331</b>

<sup>a</sup> Anthracite, bituminous coal, subbituminous coal, lignite, waste coal, and coal synfuel.

<sup>b</sup> Distillate fuel oil, residual fuel oil, petroleum coke, jet fuel, kerosene, other petroleum, and waste oil.

<sup>c</sup> Natural gas, plus a small amount of supplemental gaseous fuels.

<sup>d</sup> Blast furnace gas, propane gas, and other manufactured and waste gases derived from fossil fuels.

<sup>e</sup> Pumped storage facility production minus energy used for pumping.

<sup>f</sup> Wood and wood-derived fuels.

<sup>g</sup> Municipal solid waste from biogenic sources, landfill gas, sludge waste, agricultural byproducts, and other biomass. Through 2000, also includes non-renewable waste (municipal solid waste from non-biogenic sources, and tire-derived fuels).

<sup>h</sup> Solar thermal and photovoltaic energy.

<sup>i</sup> Includes batteries, chemicals, hydrogen, pitch, purchased steam, sulfur,

miscellaneous technologies, and, beginning in 2001, non-renewable waste (municipal solid waste from non-biogenic sources, and tire-derived fuels).

<sup>j</sup> Included in "Conventional Hydroelectric Power."

<sup>k</sup> Through 1988, data are for electric utilities only. Beginning in 1989, data are for electric utilities and independent power producers.

NA=Not available.

Notes: • The electric power sector comprises electricity-only and combined-heat-and-power (CHP) plants within the NAICS 22 category whose primary business is to sell electricity, or electricity and heat, to the public. • Totals may not equal sum of components due to independent rounding. • Geographic coverage is the 50 States and the District of Columbia.

Web Page: See <http://www.eia.doe.gov/emeu/mer/elect.html> for all available data beginning in 1973.

Sources: See end of section.

**Table 7.2c Electricity Net Generation: Commercial and Industrial Sectors**  
(Subset of Table 7.2a; Million Kilowatthours)

	Commercial Sector <sup>a</sup>					Industrial Sector <sup>b</sup>							
	Coal <sup>c</sup>	Petroleum <sup>d</sup>	Natural Gas <sup>e</sup>	Biomass	Total <sup>g</sup>	Coal <sup>c</sup>	Petroleum <sup>d</sup>	Natural Gas <sup>e</sup>	Other Gases <sup>h</sup>	Hydroelectric Power <sup>i</sup>	Biomass		Total <sup>k</sup>
				Waste <sup>f</sup>							Wood <sup>j</sup>	Waste <sup>f</sup>	
<b>1973 Total</b> .....	NA	NA	NA	NA	NA	NA	NA	NA	NA	3,347	NA	NA	3,347
<b>1975 Total</b> .....	NA	NA	NA	NA	NA	NA	NA	NA	NA	3,106	NA	NA	3,106
<b>1980 Total</b> .....	NA	NA	NA	NA	NA	NA	NA	NA	NA	3,161	NA	NA	3,161
<b>1985 Total</b> .....	NA	NA	NA	NA	NA	NA	NA	NA	NA	3,161	NA	NA	3,161
<b>1990 Total</b> .....	796	589	3,272	812	5,837	21,107	7,169	60,007	9,641	2,975	25,379	949	130,830
<b>1995 Total</b> .....	998	379	5,162	1,519	8,232	22,372	6,030	71,717	11,943	5,304	28,868	900	151,025
<b>1996 Total</b> .....	1,051	369	5,249	2,176	9,030	22,172	6,260	71,049	13,015	5,878	28,354	919	151,017
<b>1997 Total</b> .....	1,040	427	4,725	2,342	8,701	23,214	5,649	75,078	11,814	5,685	28,225	882	154,097
<b>1998 Total</b> .....	985	383	4,879	2,335	8,748	22,337	6,206	77,085	11,170	5,349	27,693	880	154,132
<b>1999 Total</b> .....	995	434	4,607	2,393	8,563	21,474	6,088	78,793	12,519	4,758	28,060	686	156,264
<b>2000 Total</b> .....	1,097	432	4,262	1,985	7,903	22,056	5,597	78,798	11,927	4,135	28,652	839	156,673
<b>2001 Total</b> .....	995	438	4,434	1,007	7,416	20,135	5,293	79,755	8,454	3,145	26,888	596	149,175
<b>2002 Total</b> .....	992	431	4,310	1,053	7,415	21,525	4,403	79,013	9,493	3,825	29,643	846	152,580
<b>2003 Total</b> .....	1,206	423	3,899	1,289	7,496	19,817	5,285	78,705	12,953	4,222	27,988	715	154,530
<b>2004 Total</b> .....	1,323	469	4,051	1,527	8,270	20,103	5,610	77,409	13,740	3,248	27,835	840	153,925
<b>2005 Total</b> .....	1,329	375	4,279	1,650	8,492	19,791	5,380	70,380	12,356	3,195	28,098	789	144,739
<b>2006</b> January .....	117	26	322	139	684	1,664	411	6,266	994	357	2,500	57	12,720
February .....	112	29	298	128	643	1,516	366	5,568	975	281	2,180	49	11,357
March .....	99	32	333	111	643	1,656	359	5,825	1,084	210	2,313	43	12,046
April .....	86	24	306	129	625	1,641	319	5,438	1,026	185	2,281	45	11,445
May .....	98	17	363	147	713	1,662	329	6,269	1,079	182	2,262	52	12,380
June .....	113	15	381	129	724	1,706	326	6,213	977	177	2,284	44	12,176
July .....	123	18	439	130	783	1,784	338	6,884	1,087	220	2,498	54	13,375
August .....	127	17	437	129	780	1,784	376	6,959	1,078	182	2,488	49	13,394
September .....	100	13	369	127	682	1,624	343	6,128	971	202	2,374	46	12,193
October .....	95	11	392	133	704	1,655	291	6,433	1,032	279	2,348	54	12,645
November .....	108	15	347	134	682	1,545	339	5,862	898	358	2,312	53	11,906
December .....	111	24	358	138	709	1,625	398	6,410	896	266	2,457	55	12,617
<b>Total</b> .....	<b>1,289</b>	<b>242</b>	<b>4,345</b>	<b>1,574</b>	<b>8,371</b>	<b>19,861</b>	<b>4,197</b>	<b>74,255</b>	<b>12,096</b>	<b>2,899</b>	<b>28,296</b>	<b>601</b>	<b>148,254</b>
<b>2007</b> January .....	113	29	355	140	717	1,443	376	6,489	966	402	2,359	50	12,552
February .....	114	28	349	121	676	1,332	391	5,716	856	207	2,153	46	11,176
March .....	109	25	363	144	716	1,502	384	5,849	1,079	211	2,251	60	11,846
April .....	93	21	350	109	651	1,366	375	5,621	1,028	200	2,330	39	11,478
May .....	100	13	362	132	690	1,462	377	5,998	1,035	180	2,278	47	11,916
June .....	99	10	394	143	719	1,456	327	6,059	1,017	218	2,314	54	11,897
July .....	105	10	417	152	758	1,522	324	6,513	1,033	142	2,448	63	12,556
August .....	117	15	432	136	770	1,541	336	6,946	990	216	2,439	59	13,048
September .....	104	10	379	132	690	1,428	258	6,402	954	107	2,374	57	12,057
October .....	106	11	392	140	724	1,423	278	6,526	861	117	2,384	56	12,145
November .....	110	11	351	141	683	1,312	305	6,203	852	113	2,365	57	11,666
December .....	114	13	367	143	709	1,360	334	6,538	841	157	2,418	56	12,191
<b>Total</b> .....	<b>1,285</b>	<b>195</b>	<b>4,511</b>	<b>1,631</b>	<b>8,503</b>	<b>17,146</b>	<b>4,064</b>	<b>74,860</b>	<b>11,510</b>	<b>2,269</b>	<b>28,113</b>	<b>644</b>	<b>144,529</b>
<b>2008</b> January .....	170	14	407	128	787	1,380	268	6,898	775	251	2,368	57	12,321
February .....	141	11	381	112	708	1,284	224	6,257	726	285	2,192	66	11,251
March .....	122	7	380	126	680	1,518	230	5,760	1,071	285	2,254	55	11,455
April .....	143	4	324	153	704	1,426	225	5,535	985	234	2,161	62	10,933
May .....	147	4	313	152	702	1,483	176	5,954	851	226	2,254	66	11,247
June .....	114	11	331	155	695	1,474	238	6,279	909	113	2,313	65	11,622
July .....	128	12	383	146	745	1,602	234	6,938	991	97	2,395	69	12,582
August .....	121	8	391	144	736	1,525	220	6,808	1,000	97	2,407	58	12,340
September .....	112	8	352	133	678	1,494	251	5,153	604	82	2,245	52	10,064
<b>9-Month Total</b> .....	<b>1,199</b>	<b>79</b>	<b>3,263</b>	<b>1,248</b>	<b>6,435</b>	<b>13,188</b>	<b>2,065</b>	<b>55,581</b>	<b>7,911</b>	<b>1,671</b>	<b>20,590</b>	<b>551</b>	<b>103,815</b>
<b>2007 9-Month Total</b> .....	<b>954</b>	<b>161</b>	<b>3,400</b>	<b>1,208</b>	<b>6,388</b>	<b>13,051</b>	<b>3,147</b>	<b>55,594</b>	<b>8,956</b>	<b>1,882</b>	<b>20,946</b>	<b>475</b>	<b>108,526</b>
<b>2006 9-Month Total</b> .....	<b>975</b>	<b>191</b>	<b>3,248</b>	<b>1,170</b>	<b>6,276</b>	<b>15,037</b>	<b>3,168</b>	<b>55,551</b>	<b>9,270</b>	<b>1,996</b>	<b>21,179</b>	<b>439</b>	<b>111,087</b>

<sup>a</sup> Commercial combined-heat-and-power (CHP) and commercial electricity-only plants.

<sup>b</sup> Industrial combined-heat-and-power (CHP) and industrial electricity-only plants.

<sup>c</sup> Anthracite, bituminous coal, subbituminous coal, lignite, waste coal, and coal syfnfuel.

<sup>d</sup> Distillate fuel oil, residual fuel oil, petroleum coke, jet fuel, kerosene, other petroleum, and waste oil.

<sup>e</sup> Natural gas, plus a small amount of supplemental gaseous fuels.

<sup>f</sup> Municipal solid waste from biogenic sources, landfill gas, sludge waste, agricultural byproducts, and other biomass. Through 2000, also includes non-renewable waste (municipal solid waste from non-biogenic sources, and tire-derived fuels).

<sup>g</sup> Includes a small amount of conventional hydroelectric power, other gases, wood, and other, which are not separately displayed.

<sup>h</sup> Blast furnace gas, propane gas, and other manufactured and waste gases derived from fossil fuels.

<sup>i</sup> Conventional hydroelectric power.

<sup>j</sup> Wood and wood-derived fuels.

<sup>k</sup> Includes batteries, chemicals, hydrogen, pitch, purchased steam, sulfur, miscellaneous technologies, and, beginning in 2001, non-renewable waste (municipal solid waste from non-biogenic sources, and tire-derived fuels).

NA=Not available.

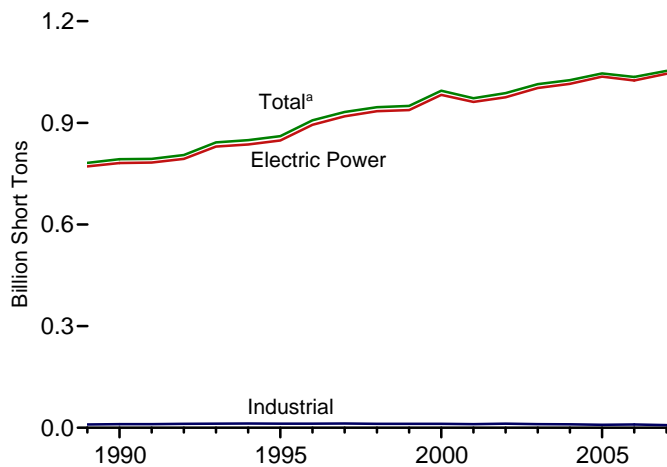
Notes: • See Note, "Classification of Power Plants Into Energy-Use Sectors," at end of section. • Totals may not equal sum of components due to independent rounding. • Geographic coverage is the 50 States and the District of Columbia.

Web Page: See <http://www.eia.doe.gov/emeu/mer/elect.html> for all available data beginning in 1973.

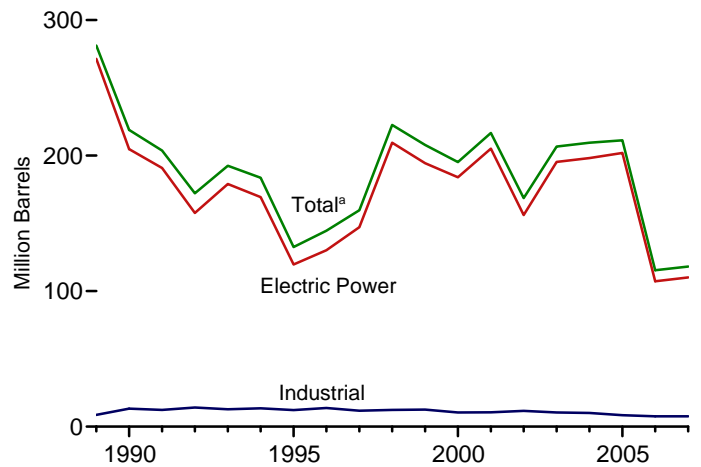
Sources: See end of section.

**Figure 7.3 Consumption of Selected Combustible Fuels for Electricity Generation**

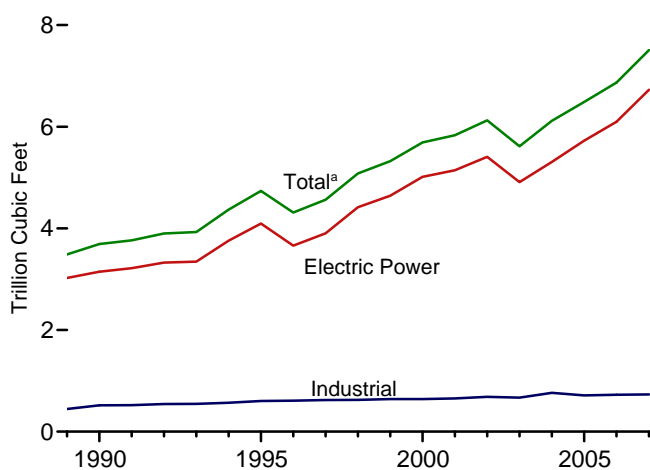
**Coal by Sector, 1989-2007**



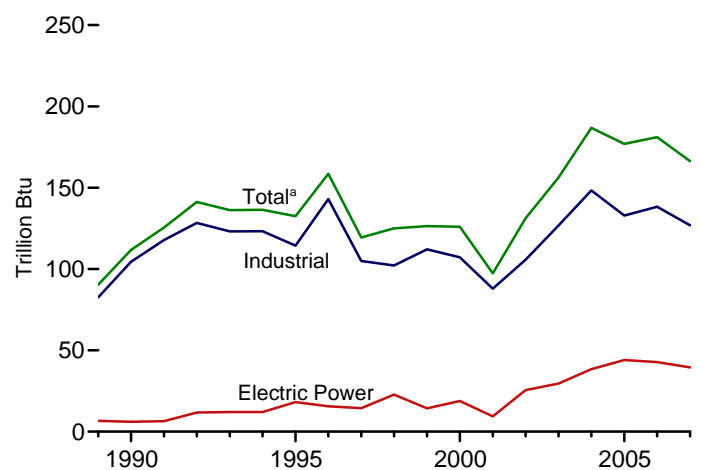
**Petroleum by Sector, 1989-2007**



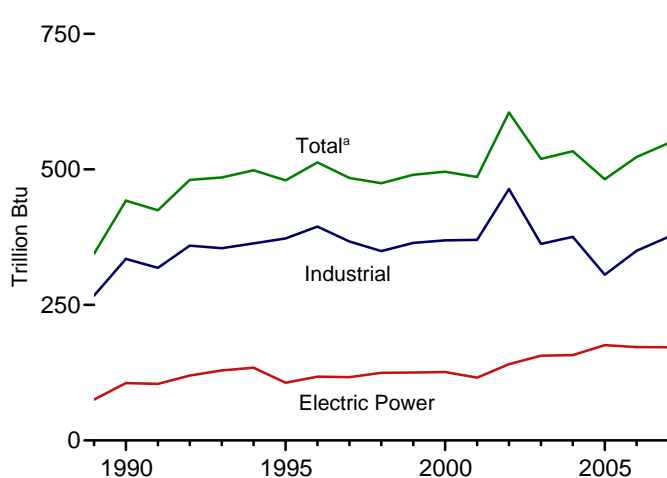
**Natural Gas by Sector, 1989-2007**



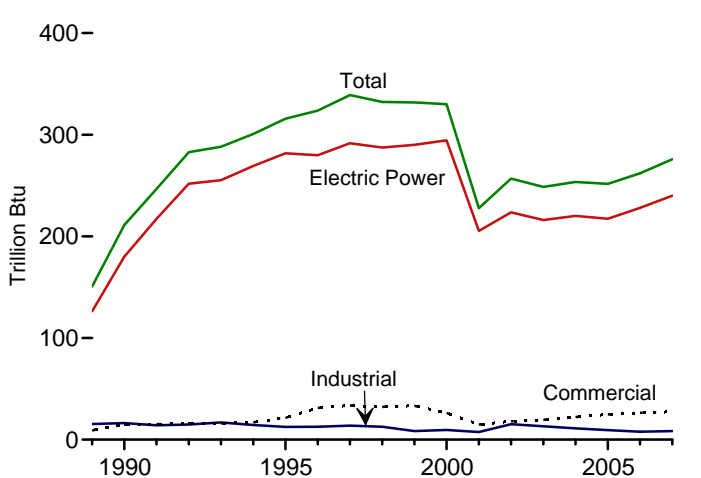
**Other Gases<sup>b</sup> by Sector, 1989-2007**



**Wood by Sector, 1989-2007**



**Waste by Sector, 1989-2007**



<sup>a</sup>Includes commercial sector.

<sup>b</sup>Blast furnace gas, propane gas, and other manufactured and waste gases derived from fossil fuels.

Note: Because vertical scales differ, graphs should not be compared.  
 Web Page: <http://www.eia.doe.gov/emeu/mer/elect.html>  
 Sources: Tables 7.3a, 7.3b, and 7.3c.



**Table 7.3a Consumption of Combustible Fuels for Electricity Generation:  
Total (All Sectors) (Sum of Tables 7.3b and 7.3c)**

	Coal <sup>a</sup>	Petroleum					Natural Gas <sup>f</sup>	Other Gases <sup>g</sup>	Biomass		Other <sup>i</sup>
		Distillate Fuel Oil <sup>b</sup>	Residual Fuel Oil <sup>c</sup>	Other Liquids <sup>d</sup>	Petroleum Coke <sup>e</sup>	Total <sup>e</sup>			Wood <sup>h</sup>	Waste <sup>i</sup>	
		Thousand Short Tons	Thousand Barrels			Thousand Short Tons			Thousand Barrels	Billion Cubic Feet	
<b>1973 Total</b> .....	<b>389,212</b>	<b>47,058</b>	<b>513,190</b>	<b>NA</b>	<b>507</b>	<b>562,781</b>	<b>3,660</b>	<b>NA</b>	<b>1</b>	<b>2</b>	<b>NA</b>
<b>1975 Total</b> .....	<b>405,962</b>	<b>38,907</b>	<b>467,221</b>	<b>NA</b>	<b>70</b>	<b>506,479</b>	<b>3,158</b>	<b>NA</b>	<b>(s)</b>	<b>2</b>	<b>NA</b>
<b>1980 Total</b> .....	<b>569,274</b>	<b>29,051</b>	<b>391,163</b>	<b>NA</b>	<b>179</b>	<b>421,110</b>	<b>3,682</b>	<b>NA</b>	<b>3</b>	<b>2</b>	<b>NA</b>
<b>1985 Total</b> .....	<b>693,841</b>	<b>14,635</b>	<b>158,779</b>	<b>NA</b>	<b>231</b>	<b>174,571</b>	<b>3,044</b>	<b>NA</b>	<b>8</b>	<b>7</b>	<b>NA</b>
<b>1990 Total</b> <sup>k</sup> .....	<b>792,457</b>	<b>18,143</b>	<b>190,849</b>	<b>437</b>	<b>1,914</b>	<b>218,997</b>	<b>3,692</b>	<b>112</b>	<b>442</b>	<b>211</b>	<b>36</b>
<b>1995 Total</b> .....	<b>860,594</b>	<b>19,615</b>	<b>95,507</b>	<b>680</b>	<b>3,355</b>	<b>132,578</b>	<b>4,738</b>	<b>133</b>	<b>480</b>	<b>316</b>	<b>42</b>
<b>1996 Total</b> .....	<b>907,209</b>	<b>20,252</b>	<b>106,055</b>	<b>1,712</b>	<b>3,322</b>	<b>144,626</b>	<b>4,312</b>	<b>159</b>	<b>513</b>	<b>324</b>	<b>37</b>
<b>1997 Total</b> .....	<b>931,949</b>	<b>20,309</b>	<b>118,741</b>	<b>237</b>	<b>4,086</b>	<b>159,715</b>	<b>4,565</b>	<b>119</b>	<b>484</b>	<b>339</b>	<b>36</b>
<b>1998 Total</b> .....	<b>946,295</b>	<b>25,062</b>	<b>172,728</b>	<b>549</b>	<b>4,860</b>	<b>222,640</b>	<b>5,081</b>	<b>125</b>	<b>475</b>	<b>322</b>	<b>36</b>
<b>1999 Total</b> .....	<b>949,802</b>	<b>25,951</b>	<b>158,187</b>	<b>974</b>	<b>4,552</b>	<b>207,871</b>	<b>5,322</b>	<b>126</b>	<b>490</b>	<b>332</b>	<b>41</b>
<b>2000 Total</b> .....	<b>994,933</b>	<b>31,675</b>	<b>143,381</b>	<b>1,450</b>	<b>3,744</b>	<b>195,228</b>	<b>5,691</b>	<b>126</b>	<b>496</b>	<b>330</b>	<b>46</b>
<b>2001 Total</b> .....	<b>972,691</b>	<b>31,150</b>	<b>165,312</b>	<b>855</b>	<b>3,871</b>	<b>216,672</b>	<b>5,832</b>	<b>97</b>	<b>486</b>	<b>228</b>	<b>160</b>
<b>2002 Total</b> .....	<b>987,583</b>	<b>23,286</b>	<b>109,235</b>	<b>1,894</b>	<b>6,836</b>	<b>168,597</b>	<b>6,126</b>	<b>131</b>	<b>605</b>	<b>257</b>	<b>191</b>
<b>2003 Total</b> .....	<b>1,014,058</b>	<b>29,672</b>	<b>142,518</b>	<b>2,947</b>	<b>6,303</b>	<b>206,653</b>	<b>5,616</b>	<b>156</b>	<b>519</b>	<b>249</b>	<b>193</b>
<b>2004 Total</b> .....	<b>1,026,018</b>	<b>20,669</b>	<b>145,171</b>	<b>3,959</b>	<b>7,942</b>	<b>209,508</b>	<b>6,117</b>	<b>187</b>	<b>534</b>	<b>254</b>	<b>176</b>
<b>2005 Total</b> .....	<b>1,045,878</b>	<b>21,163</b>	<b>144,234</b>	<b>3,303</b>	<b>8,511</b>	<b>211,256</b>	<b>6,487</b>	<b>177</b>	<b>482</b>	<b>252</b>	<b>161</b>
<b>2006</b>											
January .....	88,061	1,106	5,872	221	738	10,889	370	15	47	23	14
February .....	81,720	1,006	4,569	174	657	9,033	392	15	41	21	12
March .....	83,233	832	3,190	238	620	7,360	458	16	45	22	14
April .....	73,270	1,047	3,817	175	631	8,193	472	15	38	20	13
May .....	81,254	1,045	3,691	246	591	7,936	559	16	41	22	14
June .....	88,045	1,187	5,581	230	659	10,291	685	15	43	21	14
July .....	97,912	1,495	7,200	268	721	12,570	924	15	45	23	15
August .....	98,970	1,683	9,414	342	679	14,836	902	17	47	23	15
September .....	85,051	840	4,247	225	619	8,409	603	15	43	21	14
October .....	84,479	996	4,714	161	621	8,973	585	15	44	22	13
November .....	82,938	1,011	4,607	151	554	8,538	448	14	43	22	13
December .....	90,415	1,123	4,118	181	584	8,341	472	13	46	23	14
<b>Total</b> .....	<b>1,035,346</b>	<b>13,372</b>	<b>61,019</b>	<b>2,612</b>	<b>7,673</b>	<b>115,370</b>	<b>6,870</b>	<b>181</b>	<b>523</b>	<b>262</b>	<b>165</b>
<b>2007</b>											
January .....	92,245	1,465	6,057	241	605	10,790	500	14	46	24	14
February .....	84,496	2,609	10,041	578	484	15,650	478	11	44	22	12
March .....	82,300	1,230	5,544	280	492	9,514	469	15	43	24	14
April .....	76,357	973	5,257	331	471	8,915	507	14	41	21	13
May .....	81,774	1,096	4,665	307	520	8,667	561	13	41	23	14
June .....	90,592	1,375	5,748	308	597	10,417	682	15	42	23	14
July .....	97,419	1,388	5,798	307	528	10,136	819	14	44	24	14
August .....	99,944	2,131	7,860	439	558	13,221	1,038	15	44	24	14
September .....	88,807	1,066	5,063	243	517	8,958	736	15	51	23	14
October .....	84,679	1,169	4,782	225	467	8,510	664	14	51	21	15
November .....	82,928	932	2,376	210	439	5,712	501	13	50	23	13
December .....	91,805	1,170	3,511	230	543	7,626	553	13	52	24	16
<b>Total</b> .....	<b>1,053,346</b>	<b>16,605</b>	<b>66,701</b>	<b>3,699</b>	<b>6,222</b>	<b>118,115</b>	<b>7,507</b>	<b>166</b>	<b>548</b>	<b>276</b>	<b>169</b>
<b>2008</b>											
January .....	94,185	1,697	3,376	297	500	7,868	556	14	41	19	13
February .....	86,377	1,216	2,747	213	465	6,500	461	13	45	18	12
March .....	83,143	853	2,456	224	404	5,551	483	15	38	20	14
April .....	77,293	854	2,680	165	417	5,787	483	10	36	20	13
May .....	82,141	852	2,891	167	397	5,897	498	10	38	21	13
June .....	89,895	1,492	4,864	243	492	9,062	689	11	38	21	14
July .....	98,434	1,083	3,985	162	435	7,404	813	12	37	21	14
August .....	95,936	875	3,348	151	461	6,681	789	13	39	21	14
September .....	86,173	927	3,928	197	426	7,183	623	9	36	20	12
<b>9-Month Total</b> .....	<b>793,576</b>	<b>9,850</b>	<b>30,275</b>	<b>1,820</b>	<b>3,997</b>	<b>61,932</b>	<b>5,396</b>	<b>108</b>	<b>348</b>	<b>183</b>	<b>119</b>
<b>2007 9-Month Total</b> .....	<b>793,934</b>	<b>13,333</b>	<b>56,033</b>	<b>3,035</b>	<b>4,773</b>	<b>96,266</b>	<b>5,790</b>	<b>126</b>	<b>396</b>	<b>207</b>	<b>125</b>
<b>2006 9-Month Total</b> .....	<b>777,514</b>	<b>10,242</b>	<b>47,580</b>	<b>2,118</b>	<b>5,915</b>	<b>89,517</b>	<b>5,364</b>	<b>139</b>	<b>390</b>	<b>196</b>	<b>124</b>

<sup>a</sup> Anthracite, bituminous coal, subbituminous coal, lignite, waste coal, and coal synfuel.

<sup>b</sup> Fuel oil nos. 1, 2, and 4. For 1973-1979, data are for gas turbine and internal combustion plant use of petroleum. For 1980-2000, electric utility data also include small amounts of kerosene and jet fuel.

<sup>c</sup> Fuel oil nos. 5 and 6. For 1973-1979, data are for steam plant use of petroleum. For 1980-2000, electric utility data also include a small amount of fuel oil no. 4.

<sup>d</sup> Jet fuel, kerosene, other petroleum liquids, and waste oil.

<sup>e</sup> Petroleum coke is converted from short tons to barrels by multiplying by 5.

<sup>f</sup> Natural gas, plus a small amount of supplemental gaseous fuels.

<sup>g</sup> Blast furnace gas, propane gas, and other manufactured and waste gases derived from fossil fuels.

<sup>h</sup> Wood and wood-derived fuels.

<sup>i</sup> Municipal solid waste from biogenic sources, landfill gas, sludge waste, agricultural byproducts, and other biomass. Through 2000, also includes non-renewable waste (municipal solid waste from non-biogenic sources, and

tire-derived fuels).

<sup>j</sup> Batteries, chemicals, hydrogen, pitch, purchased steam, sulfur, miscellaneous technologies, and, beginning in 2001, non-renewable waste (municipal solid waste from non-biogenic sources, and tire-derived fuels).

<sup>k</sup> Through 1988, data are for electric utilities only. Beginning in 1989, data are for electric utilities, independent power producers, commercial plants, and industrial plants.

NA=Not available. (s)=Less than 0.5 trillion Btu.

Notes: • Data are for fuels consumed to produce electricity. Data also include fuels consumed to produce useful thermal output at a small number of electric utility combined-heat-and-power (CHP) plants. • Totals may not equal sum of components due to independent rounding. • Geographic coverage is the 50 States and the District of Columbia.

Web Page: See <http://www.eia.doe.gov/emeu/mer/elect.html> for all available data beginning in 1973.

Sources: See sources for Tables 7.3b and 7.3c.

**Table 7.3b Consumption of Combustible Fuels for Electricity Generation: Electric Power Sector** (Subset of Table 7.3a)

	Coal <sup>a</sup>	Petroleum					Natural Gas <sup>f</sup>	Other Gases <sup>g</sup>	Biomass		Other <sup>j</sup>
		Distillate Fuel Oil <sup>b</sup>	Residual Fuel Oil <sup>c</sup>	Other Liquids <sup>d</sup>	Petroleum Coke <sup>e</sup>	Total <sup>e</sup>			Wood <sup>h</sup>	Waste <sup>i</sup>	
		Thousand Short Tons	Thousand Barrels			Thousand Short Tons			Thousand Barrels	Billion Cubic Feet	
<b>1973 Total</b> .....	<b>389,212</b>	<b>47,058</b>	<b>513,190</b>	<b>NA</b>	<b>507</b>	<b>562,781</b>	<b>3,660</b>	<b>NA</b>	<b>1</b>	<b>2</b>	<b>NA</b>
<b>1975 Total</b> .....	<b>405,962</b>	<b>38,907</b>	<b>467,221</b>	<b>NA</b>	<b>70</b>	<b>506,479</b>	<b>3,158</b>	<b>NA</b>	<b>(s)</b>	<b>2</b>	<b>NA</b>
<b>1980 Total</b> .....	<b>569,274</b>	<b>29,051</b>	<b>391,163</b>	<b>NA</b>	<b>179</b>	<b>421,110</b>	<b>3,682</b>	<b>NA</b>	<b>3</b>	<b>2</b>	<b>NA</b>
<b>1985 Total</b> .....	<b>693,841</b>	<b>14,635</b>	<b>158,779</b>	<b>NA</b>	<b>231</b>	<b>174,571</b>	<b>3,044</b>	<b>NA</b>	<b>8</b>	<b>7</b>	<b>NA</b>
<b>1990 Total</b> <sup>k</sup> .....	<b>781,301</b>	<b>16,394</b>	<b>183,285</b>	<b>25</b>	<b>1,008</b>	<b>204,745</b>	<b>3,147</b>	<b>6</b>	<b>106</b>	<b>180</b>	<b>(s)</b>
<b>1995 Total</b> .....	<b>847,854</b>	<b>18,066</b>	<b>88,895</b>	<b>441</b>	<b>2,452</b>	<b>119,663</b>	<b>4,094</b>	<b>18</b>	<b>106</b>	<b>282</b>	<b>2</b>
<b>1996 Total</b> .....	<b>894,400</b>	<b>18,472</b>	<b>98,795</b>	<b>567</b>	<b>2,467</b>	<b>130,168</b>	<b>3,660</b>	<b>16</b>	<b>117</b>	<b>280</b>	<b>2</b>
<b>1997 Total</b> .....	<b>919,009</b>	<b>18,646</b>	<b>112,423</b>	<b>130</b>	<b>3,201</b>	<b>147,202</b>	<b>3,903</b>	<b>14</b>	<b>117</b>	<b>292</b>	<b>1</b>
<b>1998 Total</b> .....	<b>934,126</b>	<b>23,166</b>	<b>165,875</b>	<b>411</b>	<b>3,999</b>	<b>209,447</b>	<b>4,416</b>	<b>23</b>	<b>125</b>	<b>287</b>	<b>2</b>
<b>1999 Total</b> .....	<b>937,888</b>	<b>23,875</b>	<b>151,921</b>	<b>514</b>	<b>3,607</b>	<b>194,345</b>	<b>4,644</b>	<b>14</b>	<b>125</b>	<b>290</b>	<b>1</b>
<b>2000 Total</b> .....	<b>982,713</b>	<b>29,722</b>	<b>138,047</b>	<b>403</b>	<b>3,155</b>	<b>183,946</b>	<b>5,014</b>	<b>19</b>	<b>126</b>	<b>294</b>	<b>1</b>
<b>2001 Total</b> .....	<b>961,523</b>	<b>29,056</b>	<b>159,150</b>	<b>374</b>	<b>3,308</b>	<b>205,119</b>	<b>5,142</b>	<b>9</b>	<b>116</b>	<b>205</b>	<b>109</b>
<b>2002 Total</b> .....	<b>975,251</b>	<b>21,810</b>	<b>104,577</b>	<b>1,243</b>	<b>5,705</b>	<b>156,154</b>	<b>5,408</b>	<b>25</b>	<b>141</b>	<b>224</b>	<b>137</b>
<b>2003 Total</b> .....	<b>1,003,036</b>	<b>27,441</b>	<b>137,361</b>	<b>1,937</b>	<b>5,719</b>	<b>195,336</b>	<b>4,909</b>	<b>30</b>	<b>156</b>	<b>216</b>	<b>136</b>
<b>2004 Total</b> .....	<b>1,015,079</b>	<b>18,927</b>	<b>139,806</b>	<b>2,702</b>	<b>7,357</b>	<b>198,220</b>	<b>5,306</b>	<b>38</b>	<b>157</b>	<b>220</b>	<b>136</b>
<b>2005 Total</b> .....	<b>1,036,140</b>	<b>19,587</b>	<b>139,376</b>	<b>2,634</b>	<b>8,066</b>	<b>201,926</b>	<b>5,725</b>	<b>44</b>	<b>176</b>	<b>217</b>	<b>120</b>
<b>2006</b>											
January .....	87,182	1,043	5,430	163	685	10,060	307	4	16	20	10
February .....	80,920	930	4,182	127	605	8,266	336	3	15	18	9
March .....	82,376	738	2,820	184	572	6,601	396	4	15	19	10
April .....	72,432	981	3,522	129	585	7,558	415	4	11	17	10
May .....	80,397	988	3,426	167	545	7,304	494	4	13	19	10
June .....	87,184	1,128	5,342	154	610	9,672	620	4	14	19	10
July .....	96,995	1,429	6,951	183	673	11,928	852	3	15	20	11
August .....	98,053	1,625	9,162	218	633	14,172	829	4	16	20	11
September .....	84,208	798	3,987	142	572	7,785	539	3	15	19	10
October .....	83,616	950	4,469	121	579	8,434	517	3	14	19	10
November .....	82,142	947	4,293	113	508	7,895	387	3	14	19	10
December .....	89,602	1,056	3,739	143	525	7,562	405	3	15	20	10
<b>Total</b> .....	<b>1,025,107</b>	<b>12,613</b>	<b>57,322</b>	<b>1,844</b>	<b>7,092</b>	<b>107,238</b>	<b>6,097</b>	<b>43</b>	<b>172</b>	<b>228</b>	<b>121</b>
<b>2007</b>											
January .....	91,564	1,387	5,649	190	556	10,008	433	4	15	21	11
February .....	83,866	2,513	9,652	538	435	14,879	417	3	16	19	9
March .....	81,606	1,167	5,171	222	437	8,743	406	3	14	21	10
April .....	75,721	906	4,944	221	421	8,177	447	3	12	18	10
May .....	81,099	1,026	4,437	185	469	7,992	500	3	13	20	11
June .....	89,914	1,310	5,541	230	541	9,787	619	4	14	20	11
July .....	96,714	1,335	5,591	235	475	9,537	751	3	14	21	11
August .....	99,220	2,068	7,652	356	498	12,565	964	4	15	21	11
September .....	88,034	997	4,890	196	463	8,401	670	3	14	20	10
October .....	83,910	1,101	4,606	168	415	7,949	595	3	13	18	11
November .....	82,237	878	2,138	173	386	5,117	437	3	15	20	9
December .....	91,109	1,092	3,231	180	494	6,972	486	3	15	21	11
<b>Total</b> .....	<b>1,044,995</b>	<b>15,781</b>	<b>63,501</b>	<b>2,894</b>	<b>5,590</b>	<b>110,127</b>	<b>6,725</b>	<b>39</b>	<b>172</b>	<b>240</b>	<b>124</b>
<b>2008</b>											
January .....	93,520	1,642	3,189	269	472	7,458	500	3	15	17	10
February .....	85,846	1,171	2,530	193	439	6,090	409	3	14	16	9
March .....	82,438	823	2,332	175	380	5,228	437	4	15	18	11
April .....	76,580	834	2,599	136	383	5,485	436	3	12	18	10
May .....	81,365	827	2,818	139	374	5,654	449	4	12	19	10
June .....	89,173	1,451	4,757	213	461	8,727	640	3	13	19	10
July .....	97,664	1,024	3,878	146	407	7,080	758	3	14	19	10
August .....	95,218	830	3,263	133	432	6,387	734	3	14	19	10
September .....	85,472	843	3,830	158	399	6,826	580	2	13	18	9
<b>9-Month Total</b> .....	<b>787,275</b>	<b>9,444</b>	<b>29,196</b>	<b>1,562</b>	<b>3,747</b>	<b>58,936</b>	<b>4,943</b>	<b>27</b>	<b>122</b>	<b>163</b>	<b>90</b>
<b>2007 9-Month Total</b> .....	<b>787,739</b>	<b>12,710</b>	<b>53,527</b>	<b>2,373</b>	<b>4,296</b>	<b>90,089</b>	<b>5,207</b>	<b>30</b>	<b>129</b>	<b>181</b>	<b>93</b>
<b>2006 9-Month Total</b> .....	<b>769,747</b>	<b>9,661</b>	<b>44,822</b>	<b>1,467</b>	<b>5,480</b>	<b>83,347</b>	<b>4,787</b>	<b>33</b>	<b>129</b>	<b>170</b>	<b>91</b>

<sup>a</sup> Anthracite, bituminous coal, subbituminous coal, lignite, waste coal, and coal synfuel.

<sup>b</sup> Fuel oil nos. 1, 2, and 4. For 1973-1979, data are for gas turbine and internal combustion plant use of petroleum. For 1980-2000, electric utility data also include small amounts of kerosene and jet fuel.

<sup>c</sup> Fuel oil nos. 5 and 6. For 1973-1979, data are for steam plant use of petroleum. For 1980-2000, electric utility data also include a small amount of fuel oil no. 4.

<sup>d</sup> Jet fuel, kerosene, other petroleum liquids, and waste oil.

<sup>e</sup> Petroleum coke is converted from short tons to barrels by multiplying by 5.

<sup>f</sup> Natural gas, plus a small amount of supplemental gaseous fuels.

<sup>g</sup> Blast furnace gas, propane gas, and other manufactured and waste gases derived from fossil fuels.

<sup>h</sup> Wood and wood-derived fuels.

<sup>i</sup> Municipal solid waste from biogenic sources, landfill gas, sludge waste, agricultural byproducts, and other biomass. Through 2000, also includes non-renewable waste (municipal solid waste from non-biogenic sources, and

tire-derived fuels).

<sup>j</sup> Batteries, chemicals, hydrogen, pitch, purchased steam, sulfur, miscellaneous technologies, and, beginning in 2001, non-renewable waste (municipal solid waste from non-biogenic sources, and tire-derived fuels).

<sup>k</sup> Through 1988, data are for electric utilities only. Beginning in 1989, data are for electric utilities and independent power producers.

NA=Not available. (s)=Less than 0.5 trillion Btu.

Notes: • Data are for fuels consumed to produce electricity. Data also include fuels consumed to produce useful thermal output at a small number of electric utility combined-heat-and-power (CHP) plants. • The electric power sector comprises electricity-only and combined-heat-and-power (CHP) plants within the NAICS 22 category whose primary business is to sell electricity, or electricity and heat, to the public. • Totals may not equal sum of components due to independent rounding. • Geographic coverage is the 50 States and the District of Columbia.

Web Page: See <http://www.eia.doe.gov/emeu/mer/elect.html> for all available data beginning in 1973.

Sources: See end of section.

**Table 7.3c Consumption of Selected Combustible Fuels for Electricity Generation: Commercial and Industrial Sectors** (Subset of Table 7.3a)

	Commercial Sector <sup>a</sup>				Industrial Sector <sup>b</sup>						
	Coal <sup>c</sup>	Petroleum <sup>d</sup>	Natural Gas <sup>e</sup>	Biomass	Coal <sup>c</sup>	Petroleum <sup>d</sup>	Natural Gas <sup>e</sup>	Other Gases <sup>g</sup>	Biomass		Other <sup>i</sup>
				Waste <sup>f</sup>					Wood <sup>h</sup>	Waste <sup>f</sup>	
Thousand Short Tons	Thousand Barrels	Billion Cubic Feet	Trillion Btu	Thousand Short Tons	Thousand Barrels	Billion Cubic Feet	Trillion Btu				
<b>1989 Total</b> .....	<b>414</b>	<b>1,165</b>	<b>18</b>	<b>9</b>	<b>9,707</b>	<b>8,688</b>	<b>444</b>	<b>83</b>	<b>267</b>	<b>15</b>	<b>37</b>
<b>1990 Total</b> .....	<b>417</b>	<b>953</b>	<b>28</b>	<b>15</b>	<b>10,740</b>	<b>13,299</b>	<b>517</b>	<b>104</b>	<b>335</b>	<b>16</b>	<b>36</b>
<b>1995 Total</b> .....	<b>569</b>	<b>649</b>	<b>43</b>	<b>21</b>	<b>12,171</b>	<b>12,265</b>	<b>601</b>	<b>114</b>	<b>373</b>	<b>13</b>	<b>40</b>
<b>1996 Total</b> .....	<b>656</b>	<b>645</b>	<b>42</b>	<b>31</b>	<b>12,153</b>	<b>13,813</b>	<b>610</b>	<b>143</b>	<b>394</b>	<b>13</b>	<b>35</b>
<b>1997 Total</b> .....	<b>630</b>	<b>790</b>	<b>39</b>	<b>34</b>	<b>12,311</b>	<b>11,723</b>	<b>623</b>	<b>105</b>	<b>367</b>	<b>14</b>	<b>36</b>
<b>1998 Total</b> .....	<b>440</b>	<b>802</b>	<b>41</b>	<b>32</b>	<b>11,728</b>	<b>12,392</b>	<b>625</b>	<b>102</b>	<b>349</b>	<b>13</b>	<b>35</b>
<b>1999 Total</b> .....	<b>481</b>	<b>931</b>	<b>39</b>	<b>33</b>	<b>11,432</b>	<b>12,595</b>	<b>639</b>	<b>112</b>	<b>364</b>	<b>8</b>	<b>39</b>
<b>2000 Total</b> .....	<b>514</b>	<b>823</b>	<b>37</b>	<b>26</b>	<b>11,706</b>	<b>10,459</b>	<b>640</b>	<b>107</b>	<b>369</b>	<b>10</b>	<b>45</b>
<b>2001 Total</b> .....	<b>532</b>	<b>1,023</b>	<b>36</b>	<b>15</b>	<b>10,636</b>	<b>10,530</b>	<b>654</b>	<b>88</b>	<b>370</b>	<b>7</b>	<b>44</b>
<b>2002 Total</b> .....	<b>477</b>	<b>834</b>	<b>33</b>	<b>18</b>	<b>11,855</b>	<b>11,608</b>	<b>685</b>	<b>106</b>	<b>464</b>	<b>15</b>	<b>43</b>
<b>2003 Total</b> .....	<b>582</b>	<b>894</b>	<b>38</b>	<b>19</b>	<b>10,440</b>	<b>10,424</b>	<b>668</b>	<b>127</b>	<b>362</b>	<b>13</b>	<b>46</b>
<b>2004 Total</b> .....	<b>602</b>	<b>1,188</b>	<b>46</b>	<b>22</b>	<b>10,337</b>	<b>10,100</b>	<b>765</b>	<b>148</b>	<b>376</b>	<b>11</b>	<b>27</b>
<b>2005 Total</b> .....	<b>770</b>	<b>939</b>	<b>48</b>	<b>25</b>	<b>8,969</b>	<b>8,392</b>	<b>714</b>	<b>133</b>	<b>306</b>	<b>9</b>	<b>28</b>
<b>2006</b> January .....	70	53	4	2	810	776	59	12	32	1	2
February .....	64	62	3	2	735	705	53	12	27	1	2
March .....	60	67	4	2	798	691	58	12	30	1	3
April .....	51	48	3	2	787	587	54	12	27	1	2
May .....	60	31	4	2	797	600	61	12	28	1	3
June .....	63	30	4	2	797	590	61	11	28	1	2
July .....	67	32	5	2	849	611	67	13	30	1	3
August .....	69	33	5	2	848	630	68	12	31	1	3
September .....	57	25	4	2	786	598	60	11	29	1	3
October .....	54	22	4	2	809	517	64	12	30	1	3
November .....	62	29	4	2	733	615	57	10	29	1	3
December .....	66	48	4	2	747	731	62	10	30	1	3
<b>Total</b> .....	<b>743</b>	<b>481</b>	<b>48</b>	<b>26</b>	<b>9,496</b>	<b>7,651</b>	<b>724</b>	<b>138</b>	<b>350</b>	<b>8</b>	<b>31</b>
<b>2007</b> January .....	69	59	4	2	612	723	63	10	30	1	3
February .....	67	58	4	2	563	713	57	8	27	1	2
March .....	64	52	4	2	629	718	59	11	29	1	2
April .....	52	43	4	2	585	695	56	11	29	1	2
May .....	56	23	4	2	618	652	58	10	28	1	2
June .....	57	19	4	2	620	610	59	11	28	1	2
July .....	59	19	5	2	646	580	63	11	29	1	2
August .....	64	29	5	2	660	627	69	12	29	1	3
September .....	63	20	4	2	710	537	63	12	36	1	3
October .....	64	21	4	2	705	540	64	11	37	1	3
November .....	62	20	4	2	628	574	60	10	36	1	3
December .....	68	23	4	2	629	632	63	10	37	1	3
<b>Total</b> .....	<b>745</b>	<b>387</b>	<b>50</b>	<b>27</b>	<b>7,606</b>	<b>7,601</b>	<b>733</b>	<b>127</b>	<b>376</b>	<b>8</b>	<b>31</b>
<b>2008</b> January .....	53	22	4	2	612	388	53	11	26	(s)	2
February .....	50	17	3	2	480	393	49	10	31	1	2
March .....	41	12	4	2	664	310	43	11	24	(s)	2
April .....	44	9	3	2	669	294	45	7	24	(s)	3
May .....	46	9	3	2	730	233	46	7	26	(s)	3
June .....	33	20	3	2	689	314	47	8	25	1	2
July .....	37	18	3	2	734	306	52	9	23	(s)	3
August .....	35	12	3	2	683	282	52	9	24	(s)	2
September .....	33	12	3	2	669	345	39	7	23	(s)	2
<b>9-Month Total</b> .....	<b>371</b>	<b>130</b>	<b>28</b>	<b>16</b>	<b>5,930</b>	<b>2,865</b>	<b>425</b>	<b>80</b>	<b>226</b>	<b>4</b>	<b>21</b>
<b>2007 9-Month Total</b> .....	<b>551</b>	<b>323</b>	<b>37</b>	<b>20</b>	<b>5,643</b>	<b>5,854</b>	<b>545</b>	<b>97</b>	<b>266</b>	<b>6</b>	<b>22</b>
<b>2006 9-Month Total</b> .....	<b>561</b>	<b>382</b>	<b>36</b>	<b>20</b>	<b>7,207</b>	<b>5,788</b>	<b>541</b>	<b>107</b>	<b>261</b>	<b>6</b>	<b>22</b>

<sup>a</sup> Commercial combined-heat-and-power (CHP) and commercial electricity-only plants.

<sup>b</sup> Industrial combined-heat-and-power (CHP) and industrial electricity-only plants.

<sup>c</sup> Anthracite, bituminous coal, subbituminous coal, lignite, waste coal, and coal synfuel.

<sup>d</sup> Distillate fuel oil, residual fuel oil, petroleum coke, jet fuel, kerosene, other petroleum, and waste oil.

<sup>e</sup> Natural gas, plus a small amount of supplemental gaseous fuels.

<sup>f</sup> Municipal solid waste from biogenic sources, landfill gas, sludge waste, agricultural byproducts, and other biomass. Through 2000, also includes non-renewable waste (municipal solid waste from non-biogenic sources, and tire-derived fuels).

<sup>g</sup> Blast furnace gas, propane gas, and other manufactured and waste gases derived from fossil fuels.

<sup>h</sup> Wood and wood-derived fuels.

<sup>i</sup> Batteries, chemicals, hydrogen, pitch, purchased steam, sulfur, miscellaneous

technologies, and, beginning in 2001, non-renewable waste (municipal solid waste from non-biogenic sources, and tire-derived fuels).

(s)=Less than 0.5 trillion Btu.

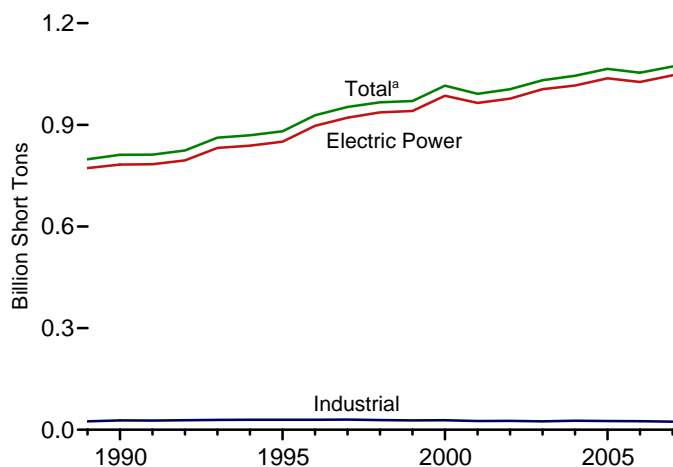
Notes: • Data are for fuels consumed to produce electricity. Through 1988, data are not available. • See Note, "Classification of Power Plants Into Energy-Use Sectors," at end of section. • Totals may not equal sum of components due to independent rounding. • Geographic coverage is the 50 States and the District of Columbia.

Web Page: See <http://www.eia.doe.gov/emeu/mer/elect.html> for all available data beginning in 1989.

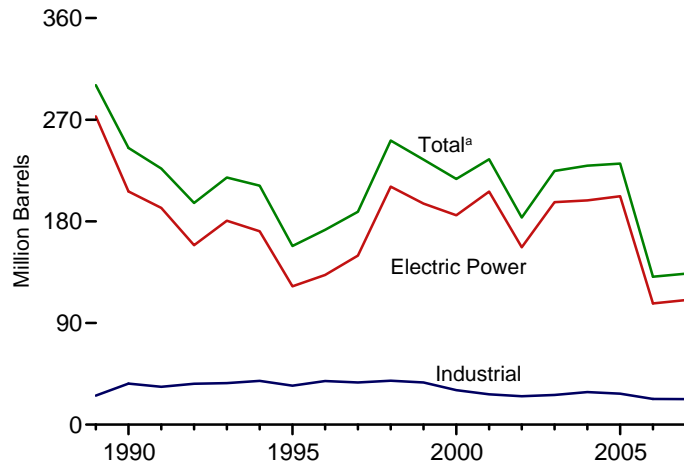
Sources: • **1989-1997:** Energy Information Administration (EIA), Form EIA-867, "Annual Nonutility Power Producer Report." • **1998-2000:** EIA, Form EIA-860B, "Annual Electric Generator Report—Nonutility." • **2001-2003:** EIA, Form EIA-906, "Power Plant Report." • **2004-2007:** EIA, Form EIA-906, "Power Plant Report," and Form EIA-920, "Combined Heat and Power Plant Report." • **2008:** EIA, Form EIA-923, "Power Plant Operations Report."

**Figure 7.4 Consumption of Selected Combustible Fuels for Electricity Generation and Useful Thermal Output**

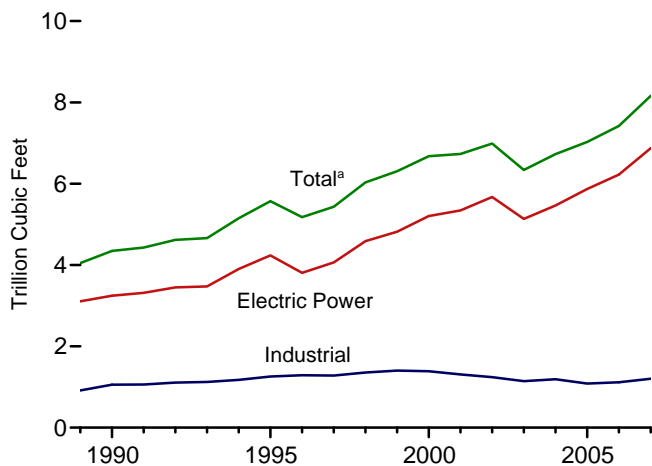
Coal by Sector, 1989-2007



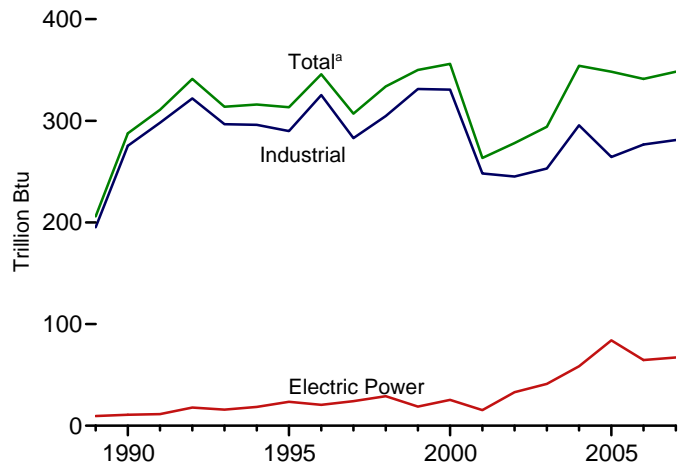
Petroleum by Sector, 1989-2007



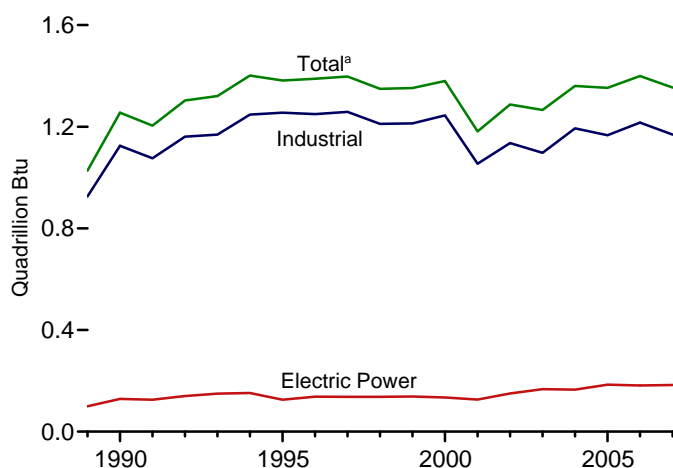
Natural Gas by Sector, 1989-2007



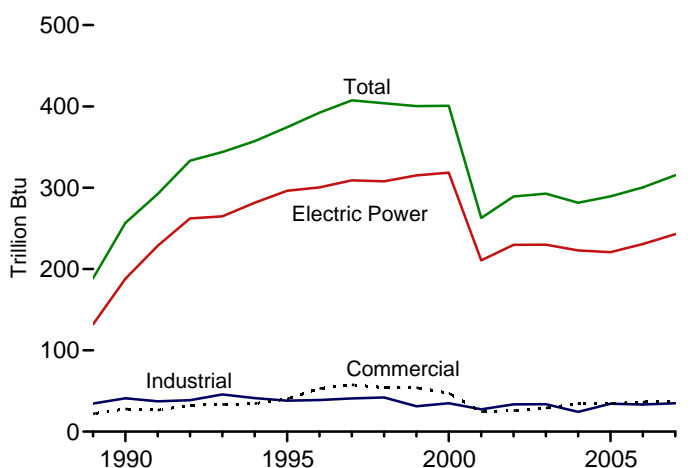
Other Gases<sup>b</sup> by Sector, 1989-2007



Wood by Sector, 1989-2007



Waste by Sector, 1989-2007



<sup>a</sup>Includes commercial sector.

<sup>b</sup>Blast furnace gas, propane gas, and other manufactured and waste gases derived from fossil fuels.

Note: Because vertical scales differ, graphs should not be compared.  
Web Page: <http://www.eia.doe.gov/emeu/mer/elect.html>  
Sources: Tables 7.4a, 7.4b, and 7.4c.

**Table 7.4a Consumption of Combustible Fuels for Electricity Generation and Useful Thermal Output: Total (All Sectors)** (Sum of Tables 7.4b and 7.4c)

	Coal <sup>a</sup>	Petroleum					Natural Gas <sup>i</sup>	Other Gases <sup>g</sup>	Biomass		Other <sup>j</sup>
		Distillate Fuel Oil <sup>b</sup>	Residual Fuel Oil <sup>c</sup>	Other Liquids <sup>d</sup>	Petroleum Coke <sup>e</sup>	Total <sup>e</sup>			Wood <sup>h</sup>	Waste <sup>i</sup>	
		Thousand Short Tons	Thousand Barrels			Thousand Short Tons			Thousand Barrels	Billion Cubic Feet	
<b>1973 Total</b> .....	<b>389,212</b>	<b>47,058</b>	<b>513,190</b>	<b>NA</b>	<b>507</b>	<b>562,781</b>	<b>3,660</b>	<b>NA</b>	<b>1</b>	<b>2</b>	<b>NA</b>
<b>1975 Total</b> .....	<b>405,962</b>	<b>38,907</b>	<b>467,221</b>	<b>NA</b>	<b>70</b>	<b>506,479</b>	<b>3,158</b>	<b>NA</b>	<b>0</b>	<b>2</b>	<b>NA</b>
<b>1980 Total</b> .....	<b>569,274</b>	<b>29,051</b>	<b>391,163</b>	<b>NA</b>	<b>179</b>	<b>421,110</b>	<b>3,682</b>	<b>NA</b>	<b>3</b>	<b>2</b>	<b>NA</b>
<b>1985 Total</b> .....	<b>693,841</b>	<b>14,635</b>	<b>158,779</b>	<b>NA</b>	<b>231</b>	<b>174,571</b>	<b>3,044</b>	<b>NA</b>	<b>8</b>	<b>7</b>	<b>NA</b>
<b>1990 Total</b> <sup>k</sup> .....	<b>811,538</b>	<b>20,194</b>	<b>209,314</b>	<b>1,332</b>	<b>2,832</b>	<b>244,998</b>	<b>4,346</b>	<b>288</b>	<b>1,256</b>	<b>257</b>	<b>86</b>
<b>1995 Total</b> .....	<b>881,012</b>	<b>21,697</b>	<b>112,168</b>	<b>1,322</b>	<b>4,590</b>	<b>158,140</b>	<b>5,572</b>	<b>313</b>	<b>1,382</b>	<b>374</b>	<b>97</b>
<b>1996 Total</b> .....	<b>928,015</b>	<b>22,444</b>	<b>124,607</b>	<b>2,468</b>	<b>4,596</b>	<b>172,499</b>	<b>5,178</b>	<b>346</b>	<b>1,389</b>	<b>392</b>	<b>91</b>
<b>1997 Total</b> .....	<b>952,955</b>	<b>22,893</b>	<b>134,623</b>	<b>526</b>	<b>6,095</b>	<b>188,517</b>	<b>5,433</b>	<b>307</b>	<b>1,397</b>	<b>407</b>	<b>103</b>
<b>1998 Total</b> .....	<b>966,615</b>	<b>30,006</b>	<b>189,267</b>	<b>1,230</b>	<b>6,196</b>	<b>251,486</b>	<b>6,030</b>	<b>334</b>	<b>1,349</b>	<b>404</b>	<b>95</b>
<b>1999 Total</b> .....	<b>970,175</b>	<b>30,616</b>	<b>172,319</b>	<b>1,812</b>	<b>5,989</b>	<b>234,694</b>	<b>6,305</b>	<b>350</b>	<b>1,352</b>	<b>400</b>	<b>101</b>
<b>2000 Total</b> .....	<b>1,015,398</b>	<b>34,572</b>	<b>156,673</b>	<b>2,904</b>	<b>4,669</b>	<b>217,494</b>	<b>6,677</b>	<b>356</b>	<b>1,380</b>	<b>401</b>	<b>109</b>
<b>2001 Total</b> .....	<b>991,635</b>	<b>33,724</b>	<b>177,137</b>	<b>1,418</b>	<b>4,532</b>	<b>234,940</b>	<b>6,731</b>	<b>263</b>	<b>1,182</b>	<b>263</b>	<b>229</b>
<b>2002 Total</b> .....	<b>1,005,144</b>	<b>24,749</b>	<b>118,637</b>	<b>3,257</b>	<b>7,353</b>	<b>183,409</b>	<b>6,986</b>	<b>278</b>	<b>1,287</b>	<b>289</b>	<b>252</b>
<b>2003 Total</b> .....	<b>1,031,778</b>	<b>31,825</b>	<b>152,859</b>	<b>4,576</b>	<b>7,067</b>	<b>224,593</b>	<b>6,337</b>	<b>294</b>	<b>1,266</b>	<b>293</b>	<b>262</b>
<b>2004 Total</b> .....	<b>1,044,798</b>	<b>23,520</b>	<b>157,478</b>	<b>4,764</b>	<b>8,721</b>	<b>229,364</b>	<b>6,727</b>	<b>354</b>	<b>1,360</b>	<b>281</b>	<b>226</b>
<b>2005 Total</b> .....	<b>1,065,281</b>	<b>24,446</b>	<b>156,915</b>	<b>4,270</b>	<b>9,113</b>	<b>231,193</b>	<b>7,028</b>	<b>348</b>	<b>1,353</b>	<b>289</b>	<b>213</b>
<b>2006</b>											
January .....	89,720	1,233	6,950	317	819	12,597	415	28	128	27	18
February .....	83,236	1,141	5,469	249	731	10,516	434	27	111	24	17
March .....	84,783	992	4,009	318	703	8,835	503	30	116	25	19
April .....	74,743	1,147	4,533	224	708	9,444	515	29	109	23	18
May .....	82,713	1,148	4,324	308	668	9,121	602	31	112	26	19
June .....	89,570	1,273	6,146	286	740	11,403	744	28	113	24	19
July .....	99,478	1,589	7,784	328	803	13,715	973	30	121	26	20
August .....	100,548	1,785	10,004	430	762	16,030	951	31	120	26	20
September .....	86,525	919	4,877	280	697	9,563	645	28	116	24	19
October .....	85,934	1,069	5,317	193	690	10,030	631	29	118	25	19
November .....	84,472	1,113	5,356	208	630	9,828	491	26	115	26	19
December .....	92,060	1,245	5,077	254	670	9,924	515	25	121	26	19
<b>Total</b> .....	<b>1,053,783</b>	<b>14,655</b>	<b>69,846</b>	<b>3,396</b>	<b>8,622</b>	<b>131,005</b>	<b>7,419</b>	<b>341</b>	<b>1,399</b>	<b>300</b>	<b>225</b>
<b>2007</b>											
January .....	93,925	1,643	6,987	331	689	12,407	544	30	117	28	19
February .....	86,068	2,943	10,994	675	558	17,404	522	23	109	25	17
March .....	83,881	1,365	6,483	355	572	11,062	512	29	112	27	19
April .....	77,792	1,104	6,065	431	550	10,351	548	31	113	24	19
May .....	83,254	1,305	5,287	418	599	10,003	603	30	111	26	20
June .....	92,090	1,492	6,251	378	695	11,596	733	30	110	27	18
July .....	98,917	1,475	6,242	376	625	11,218	880	30	115	28	19
August .....	101,500	2,262	8,300	523	665	14,412	1,152	30	113	27	20
September .....	90,126	1,164	5,501	282	604	9,966	796	28	110	26	18
October .....	86,073	1,271	5,244	274	557	9,572	719	31	114	24	19
November .....	84,304	1,030	2,845	253	526	6,757	543	28	113	27	17
December .....	94,499	1,347	4,067	280	645	8,920	607	29	117	28	20
<b>Total</b> .....	<b>1,072,430</b>	<b>18,401</b>	<b>74,265</b>	<b>4,577</b>	<b>7,285</b>	<b>133,668</b>	<b>8,160</b>	<b>348</b>	<b>1,354</b>	<b>315</b>	<b>226</b>
<b>2008</b>											
January .....	95,994	1,765	3,953	401	599	9,116	626	30	107	24	15
February .....	88,299	1,274	3,140	312	561	7,530	520	28	100	24	14
March .....	84,936	913	2,957	321	532	6,853	554	34	97	25	16
April .....	79,014	911	3,033	234	507	6,713	543	28	99	25	16
May .....	83,923	907	3,222	229	498	6,847	562	29	101	25	15
June .....	91,684	1,551	5,280	311	586	10,072	761	26	103	26	16
July .....	100,259	1,143	4,411	236	525	8,413	880	29	108	26	16
August .....	97,698	940	3,728	217	522	7,493	860	28	107	26	16
September .....	88,004	981	4,401	279	490	8,113	678	22	103	24	15
<b>9-Month Total</b> .....	<b>809,813</b>	<b>10,386</b>	<b>34,124</b>	<b>2,540</b>	<b>4,820</b>	<b>71,150</b>	<b>5,984</b>	<b>254</b>	<b>926</b>	<b>225</b>	<b>138</b>
<b>2007 9-Month Total</b> .....	<b>807,554</b>	<b>14,753</b>	<b>62,109</b>	<b>3,770</b>	<b>5,557</b>	<b>108,419</b>	<b>6,291</b>	<b>261</b>	<b>1,010</b>	<b>236</b>	<b>169</b>
<b>2006 9-Month Total</b> .....	<b>791,317</b>	<b>11,228</b>	<b>54,096</b>	<b>2,741</b>	<b>6,632</b>	<b>101,223</b>	<b>5,782</b>	<b>262</b>	<b>1,045</b>	<b>224</b>	<b>168</b>

<sup>a</sup> Anthracite, bituminous coal, subbituminous coal, lignite, waste coal, and coal synfuel.

<sup>b</sup> Fuel oil nos. 1, 2, and 4. Through 2000, electric utility data also include small amounts of kerosene and jet fuel.

<sup>c</sup> Fuel oil nos. 5 and 6. Through 2000, electric utility data also include a small amount of fuel oil no. 4.

<sup>d</sup> Jet fuel, kerosene, other petroleum liquids, and waste oil.

<sup>e</sup> Petroleum coke is converted from short tons to barrels by multiplying by 5.

<sup>f</sup> Natural gas, plus a small amount of supplemental gaseous fuels.

<sup>g</sup> Blast furnace gas, propane gas, and other manufactured and waste gases derived from fossil fuels.

<sup>h</sup> Wood and wood-derived fuels.

<sup>i</sup> Municipal solid waste from biogenic sources, landfill gas, sludge waste, agricultural byproducts, and other biomass. Through 2000, also includes non-renewable waste (municipal solid waste from non-biogenic sources, and

tire-derived fuels).

<sup>j</sup> Batteries, chemicals, hydrogen, pitch, purchased steam, sulfur, miscellaneous technologies, and, beginning in 2001, non-renewable waste (municipal solid waste from non-biogenic sources, and tire-derived fuels).

<sup>k</sup> Through 1988, data are for electric utilities only. Beginning in 1989, data are for electric utilities, independent power producers, commercial plants, and industrial plants.

NA=Not available.

Notes: • Data are for fuels consumed to produce electricity and useful thermal output. • Totals may not equal sum of components due to independent rounding.

• Geographic coverage is the 50 States and the District of Columbia.

Web Page: See <http://www.eia.doe.gov/emeu/mer/elect.html> for all available data beginning in 1973.

Sources: See sources for Tables 7.4b and 7.4c.

**Table 7.4b Consumption of Combustible Fuels for Electricity Generation and Useful Thermal Output: Electric Power Sector** (Subset of Table 7.4a)

	Coal <sup>a</sup> Thousand Short Tons	Petroleum					Natural Gas <sup>f</sup> Billion Cubic Feet	Other Gases <sup>g</sup>	Biomass		Other <sup>i</sup>
		Distillate Fuel Oil <sup>b</sup>	Residual Fuel Oil <sup>c</sup>	Other Liquids <sup>d</sup>	Petroleum Coke <sup>e</sup>	Total <sup>e</sup>			Wood <sup>h</sup>	Waste <sup>i</sup>	
<b>1973 Total</b> .....	<b>389,212</b>	<b>47,058</b>	<b>513,190</b>	<b>NA</b>	<b>507</b>	<b>562,781</b>	<b>3,660</b>	<b>NA</b>	<b>1</b>	<b>2</b>	<b>NA</b>
<b>1975 Total</b> .....	<b>405,962</b>	<b>38,907</b>	<b>467,221</b>	<b>NA</b>	<b>70</b>	<b>506,479</b>	<b>3,158</b>	<b>NA</b>	<b>(s)</b>	<b>2</b>	<b>NA</b>
<b>1980 Total</b> .....	<b>569,274</b>	<b>29,051</b>	<b>391,163</b>	<b>NA</b>	<b>179</b>	<b>421,110</b>	<b>3,682</b>	<b>NA</b>	<b>3</b>	<b>2</b>	<b>NA</b>
<b>1985 Total</b> .....	<b>693,841</b>	<b>14,635</b>	<b>158,779</b>	<b>NA</b>	<b>231</b>	<b>174,571</b>	<b>3,044</b>	<b>NA</b>	<b>8</b>	<b>7</b>	<b>NA</b>
<b>1990 Total</b> <sup>k</sup> .....	<b>782,567</b>	<b>16,567</b>	<b>184,915</b>	<b>26</b>	<b>1,008</b>	<b>206,550</b>	<b>3,245</b>	<b>11</b>	<b>129</b>	<b>188</b>	<b>(s)</b>
<b>1995 Total</b> .....	<b>850,230</b>	<b>18,553</b>	<b>90,023</b>	<b>499</b>	<b>2,674</b>	<b>122,447</b>	<b>4,237</b>	<b>24</b>	<b>125</b>	<b>296</b>	<b>2</b>
<b>1996 Total</b> .....	<b>896,921</b>	<b>18,780</b>	<b>99,951</b>	<b>653</b>	<b>2,642</b>	<b>132,593</b>	<b>3,807</b>	<b>20</b>	<b>138</b>	<b>300</b>	<b>2</b>
<b>1997 Total</b> .....	<b>921,364</b>	<b>18,989</b>	<b>113,669</b>	<b>152</b>	<b>3,372</b>	<b>149,668</b>	<b>4,065</b>	<b>24</b>	<b>137</b>	<b>309</b>	<b>1</b>
<b>1998 Total</b> .....	<b>936,619</b>	<b>23,300</b>	<b>166,528</b>	<b>431</b>	<b>4,102</b>	<b>210,769</b>	<b>4,588</b>	<b>29</b>	<b>137</b>	<b>308</b>	<b>2</b>
<b>1999 Total</b> .....	<b>940,922</b>	<b>24,058</b>	<b>152,493</b>	<b>544</b>	<b>3,735</b>	<b>195,769</b>	<b>4,820</b>	<b>19</b>	<b>138</b>	<b>315</b>	<b>1</b>
<b>2000 Total</b> .....	<b>985,821</b>	<b>30,016</b>	<b>138,513</b>	<b>454</b>	<b>3,275</b>	<b>185,358</b>	<b>5,206</b>	<b>25</b>	<b>134</b>	<b>318</b>	<b>1</b>
<b>2001 Total</b> .....	<b>964,433</b>	<b>29,274</b>	<b>159,504</b>	<b>377</b>	<b>3,427</b>	<b>206,291</b>	<b>5,342</b>	<b>15</b>	<b>126</b>	<b>211</b>	<b>113</b>
<b>2002 Total</b> .....	<b>977,507</b>	<b>21,876</b>	<b>104,773</b>	<b>1,267</b>	<b>5,816</b>	<b>156,996</b>	<b>5,672</b>	<b>33</b>	<b>150</b>	<b>230</b>	<b>143</b>
<b>2003 Total</b> .....	<b>1,005,116</b>	<b>27,632</b>	<b>138,279</b>	<b>2,026</b>	<b>5,799</b>	<b>196,932</b>	<b>5,135</b>	<b>41</b>	<b>167</b>	<b>230</b>	<b>140</b>
<b>2004 Total</b> .....	<b>1,016,268</b>	<b>19,107</b>	<b>139,816</b>	<b>2,713</b>	<b>7,372</b>	<b>198,498</b>	<b>5,464</b>	<b>59</b>	<b>165</b>	<b>223</b>	<b>138</b>
<b>2005 Total</b> .....	<b>1,037,485</b>	<b>19,675</b>	<b>139,409</b>	<b>2,685</b>	<b>8,083</b>	<b>202,184</b>	<b>5,869</b>	<b>84</b>	<b>185</b>	<b>221</b>	<b>123</b>
<b>2006</b>											
January .....	87,317	1,045	5,431	164	685	10,065	318	5	17	20	10
February .....	81,043	933	4,184	128	607	8,282	346	5	15	18	9
March .....	82,499	741	2,821	199	576	6,640	407	5	16	19	10
April .....	72,560	984	3,522	132	585	7,565	426	5	12	17	10
May .....	80,515	990	3,427	168	545	7,308	504	6	13	19	10
June .....	87,319	1,131	5,342	154	610	9,676	630	5	15	19	11
July .....	97,113	1,431	6,963	183	673	11,943	864	5	16	20	11
August .....	98,183	1,628	9,164	218	634	14,181	840	6	17	20	11
September .....	84,327	802	3,987	142	572	7,791	548	5	15	19	10
October .....	83,724	951	4,469	121	580	8,441	528	5	15	19	10
November .....	82,293	951	4,293	114	509	7,901	397	5	15	20	10
December .....	89,742	1,060	3,741	146	525	7,573	414	5	16	20	11
<b>Total</b> .....	<b>1,026,636</b>	<b>12,646</b>	<b>57,345</b>	<b>1,870</b>	<b>7,101</b>	<b>107,365</b>	<b>6,222</b>	<b>65</b>	<b>182</b>	<b>231</b>	<b>125</b>
<b>2007</b>											
January .....	91,704	1,390	5,651	195	557	10,018	442	6	16	21	11
February .....	83,988	2,529	9,656	564	435	14,925	427	5	17	19	10
March .....	81,742	1,178	5,174	224	437	8,760	417	5	15	21	11
April .....	75,815	915	4,946	224	421	8,191	457	5	15	19	10
May .....	81,221	1,029	4,441	188	469	8,002	508	5	14	20	11
June .....	90,047	1,312	5,543	232	541	9,793	627	6	15	21	11
July .....	96,826	1,336	5,592	236	476	9,546	762	6	15	21	11
August .....	99,341	2,070	7,655	360	498	12,575	1,007	6	16	21	11
September .....	88,144	1,036	4,891	198	465	8,448	679	5	15	20	10
October .....	84,016	1,103	4,607	168	415	7,953	605	6	14	18	11
November .....	82,344	880	2,140	173	386	5,123	446	5	15	21	10
December .....	91,235	1,096	3,232	181	494	6,979	496	6	16	22	12
<b>Total</b> .....	<b>1,046,424</b>	<b>15,874</b>	<b>63,529</b>	<b>2,943</b>	<b>5,594</b>	<b>110,314</b>	<b>6,874</b>	<b>67</b>	<b>184</b>	<b>243</b>	<b>128</b>
<b>2008</b>											
January .....	93,856	1,656	3,276	284	483	7,630	528	7	17	19	11
February .....	86,176	1,193	2,575	211	449	6,225	432	7	16	17	10
March .....	82,828	832	2,425	201	392	5,417	462	8	16	20	11
April .....	76,945	837	2,635	154	398	5,616	459	7	14	19	10
May .....	81,739	832	2,819	155	385	5,732	473	7	13	20	10
June .....	89,546	1,461	4,758	229	472	8,807	669	6	15	20	11
July .....	98,035	1,027	3,879	160	416	7,146	786	6	16	20	11
August .....	95,542	835	3,263	148	437	6,432	762	6	16	20	11
September .....	85,843	847	3,937	178	407	7,000	602	4	15	18	10
<b>9-Month Total</b> .....	<b>790,510</b>	<b>9,520</b>	<b>29,566</b>	<b>1,720</b>	<b>3,840</b>	<b>60,005</b>	<b>5,172</b>	<b>58</b>	<b>137</b>	<b>174</b>	<b>95</b>
<b>2007 9-Month Total</b> .....	<b>788,829</b>	<b>12,795</b>	<b>53,550</b>	<b>2,420</b>	<b>4,299</b>	<b>90,260</b>	<b>5,327</b>	<b>50</b>	<b>138</b>	<b>183</b>	<b>96</b>
<b>2006 9-Month Total</b> .....	<b>770,877</b>	<b>9,685</b>	<b>44,842</b>	<b>1,488</b>	<b>5,487</b>	<b>83,450</b>	<b>4,884</b>	<b>49</b>	<b>136</b>	<b>172</b>	<b>94</b>

<sup>a</sup> Anthracite, bituminous coal, subbituminous coal, lignite, waste coal, and coal synfuel.

<sup>b</sup> Fuel oil nos. 1, 2, and 4. Through 2000, electric utility data also include small amounts of kerosene and jet fuel.

<sup>c</sup> Fuel oil nos. 5 and 6. Through 2000, electric utility data also include a small amount of fuel oil no. 4.

<sup>d</sup> Jet fuel, kerosene, other petroleum liquids, and waste oil.

<sup>e</sup> Petroleum coke is converted from short tons to barrels by multiplying by 5.

<sup>f</sup> Natural gas, plus a small amount of supplemental gaseous fuels.

<sup>g</sup> Blast furnace gas, propane gas, and other manufactured and waste gases derived from fossil fuels.

<sup>h</sup> Wood and wood-derived fuels.

<sup>i</sup> Municipal solid waste from biogenic sources, landfill gas, sludge waste, agricultural byproducts, and other biomass. Through 2000, also includes non-renewable waste (municipal solid waste from non-biogenic sources, and tire-derived fuels).

<sup>j</sup> Batteries, chemicals, hydrogen, pitch, purchased steam, sulfur, miscellaneous technologies, and, beginning in 2001, non-renewable waste (municipal solid waste from non-biogenic sources, and tire-derived fuels).

<sup>k</sup> Through 1988, data are for electric utilities only. Beginning in 1989, data are for electric utilities and independent power producers.

NA=Not available. (s)=Less than 0.5 trillion Btu.

Notes: • Data are for fuels consumed to produce electricity and useful thermal output. • The electric power sector comprises electricity-only and combined-heat-and-power (CHP) plants within the NAICS 22 category whose primary business is to sell electricity, or electricity and heat, to the public. • Totals may not equal sum of components due to independent rounding. • Geographic coverage is the 50 States and the District of Columbia.

Web Page: See <http://www.eia.doe.gov/emeu/mer/elect.html> for all available data beginning in 1973.

Sources: See end of section.

**Table 7.4c Consumption of Selected Combustible Fuels for Electricity Generation and Useful Thermal Output: Commercial and Industrial Sectors** (Subset of Table 7.4a)

	Commercial Sector <sup>a</sup>				Industrial Sector <sup>b</sup>						
	Coal <sup>c</sup>	Petroleum <sup>d</sup>	Natural Gas <sup>e</sup>	Biomass	Coal <sup>c</sup>	Petroleum <sup>d</sup>	Natural Gas <sup>e</sup>	Other Gases <sup>g</sup>	Biomass		Other <sup>i</sup>
				Waste <sup>f</sup>					Wood <sup>h</sup>	Waste <sup>f</sup>	
Thousand Short Tons	Thousand Barrels	Billion Cubic Feet	Trillion Btu	Thousand Short Tons	Thousand Barrels	Billion Cubic Feet	Trillion Btu				
<b>1989 Total</b> .....	<b>1,125</b>	<b>1,967</b>	<b>30</b>	<b>22</b>	<b>24,867</b>	<b>25,685</b>	<b>914</b>	<b>195</b>	<b>926</b>	<b>35</b>	<b>85</b>
<b>1990 Total</b> .....	<b>1,191</b>	<b>2,056</b>	<b>46</b>	<b>28</b>	<b>27,781</b>	<b>36,392</b>	<b>1,055</b>	<b>275</b>	<b>1,125</b>	<b>41</b>	<b>86</b>
<b>1995 Total</b> .....	<b>1,419</b>	<b>1,245</b>	<b>78</b>	<b>40</b>	<b>29,363</b>	<b>34,448</b>	<b>1,258</b>	<b>290</b>	<b>1,255</b>	<b>38</b>	<b>95</b>
<b>1996 Total</b> .....	<b>1,660</b>	<b>1,246</b>	<b>82</b>	<b>53</b>	<b>29,434</b>	<b>38,661</b>	<b>1,289</b>	<b>325</b>	<b>1,249</b>	<b>39</b>	<b>89</b>
<b>1997 Total</b> .....	<b>1,738</b>	<b>1,584</b>	<b>87</b>	<b>58</b>	<b>29,853</b>	<b>37,265</b>	<b>1,282</b>	<b>283</b>	<b>1,259</b>	<b>41</b>	<b>102</b>
<b>1998 Total</b> .....	<b>1,443</b>	<b>1,807</b>	<b>87</b>	<b>54</b>	<b>28,553</b>	<b>38,910</b>	<b>1,355</b>	<b>305</b>	<b>1,211</b>	<b>42</b>	<b>93</b>
<b>1999 Total</b> .....	<b>1,490</b>	<b>1,613</b>	<b>84</b>	<b>54</b>	<b>27,763</b>	<b>37,312</b>	<b>1,401</b>	<b>331</b>	<b>1,213</b>	<b>31</b>	<b>99</b>
<b>2000 Total</b> .....	<b>1,547</b>	<b>1,615</b>	<b>85</b>	<b>47</b>	<b>28,031</b>	<b>30,520</b>	<b>1,386</b>	<b>331</b>	<b>1,244</b>	<b>35</b>	<b>108</b>
<b>2001 Total</b> .....	<b>1,448</b>	<b>1,832</b>	<b>79</b>	<b>25</b>	<b>25,755</b>	<b>26,817</b>	<b>1,310</b>	<b>248</b>	<b>1,054</b>	<b>27</b>	<b>101</b>
<b>2002 Total</b> .....	<b>1,405</b>	<b>1,250</b>	<b>74</b>	<b>26</b>	<b>26,232</b>	<b>25,163</b>	<b>1,240</b>	<b>245</b>	<b>1,136</b>	<b>34</b>	<b>92</b>
<b>2003 Total</b> .....	<b>1,816</b>	<b>1,449</b>	<b>58</b>	<b>29</b>	<b>24,846</b>	<b>26,212</b>	<b>1,144</b>	<b>253</b>	<b>1,097</b>	<b>34</b>	<b>103</b>
<b>2004 Total</b> .....	<b>1,917</b>	<b>2,009</b>	<b>72</b>	<b>34</b>	<b>26,613</b>	<b>28,857</b>	<b>1,191</b>	<b>296</b>	<b>1,193</b>	<b>24</b>	<b>67</b>
<b>2005 Total</b> .....	<b>1,922</b>	<b>1,630</b>	<b>75</b>	<b>34</b>	<b>25,875</b>	<b>27,380</b>	<b>1,084</b>	<b>264</b>	<b>1,166</b>	<b>34</b>	<b>70</b>
<b>2006</b> January .....	186	121	5	3	2,217	2,411	91	23	112	3	6
February .....	169	137	5	3	2,024	2,098	83	22	96	3	6
March .....	170	126	5	3	2,115	2,070	91	25	100	3	7
April .....	134	77	5	3	2,050	1,802	84	24	97	3	6
May .....	139	51	5	3	2,059	1,762	92	24	98	3	7
June .....	147	51	20	3	2,104	1,677	94	23	98	2	6
July .....	163	55	7	3	2,202	1,717	103	25	105	3	7
August .....	163	58	7	3	2,202	1,791	104	25	103	3	7
September .....	138	49	6	3	2,061	1,722	91	23	100	3	7
October .....	136	44	6	3	2,074	1,545	97	24	103	3	7
November .....	159	64	5	3	2,020	1,863	89	21	100	3	7
December .....	183	102	6	3	2,136	2,249	95	20	105	3	7
<b>Total</b> .....	<b>1,886</b>	<b>935</b>	<b>82</b>	<b>36</b>	<b>25,262</b>	<b>22,706</b>	<b>1,115</b>	<b>277</b>	<b>1,216</b>	<b>33</b>	<b>79</b>
<b>2007</b> January .....	192	126	6	3	2,030	2,262	97	24	100	3	7
February .....	185	132	7	3	1,895	2,347	88	18	92	3	6
March .....	171	111	6	3	1,968	2,192	89	24	97	3	7
April .....	145	81	5	3	1,832	2,078	86	26	99	2	7
May .....	144	41	5	3	1,889	1,960	90	25	97	3	7
June .....	137	33	7	3	1,906	1,770	99	24	95	3	6
July .....	149	31	9	3	1,942	1,641	109	24	100	3	6
August .....	160	44	10	3	1,999	1,793	135	24	97	3	7
September .....	143	37	8	3	1,839	1,481	109	23	95	3	6
October .....	146	37	8	3	1,910	1,582	107	25	99	3	7
November .....	170	45	6	3	1,790	1,590	91	23	97	3	6
December .....	183	56	7	3	3,081	1,886	103	23	101	3	7
<b>Total</b> .....	<b>1,924</b>	<b>774</b>	<b>83</b>	<b>37</b>	<b>24,082</b>	<b>22,580</b>	<b>1,202</b>	<b>281</b>	<b>1,169</b>	<b>35</b>	<b>78</b>
<b>2008</b> January .....	198	64	6	2	1,940	1,421	93	23	90	3	3
February .....	185	52	6	3	1,938	1,252	83	21	85	3	3
March .....	183	39	6	3	1,925	1,396	86	26	81	3	3
April .....	160	26	5	3	1,910	1,071	79	21	85	3	4
May .....	163	21	5	3	2,020	1,094	84	21	88	2	3
June .....	187	41	5	3	1,951	1,225	88	20	88	3	3
July .....	182	42	5	3	2,041	1,226	89	23	92	3	3
August .....	188	26	5	3	1,967	1,035	92	23	91	3	3
September .....	175	26	5	3	1,987	1,087	72	18	88	3	3
<b>9-Month Total</b> .....	<b>1,622</b>	<b>338</b>	<b>47</b>	<b>26</b>	<b>17,681</b>	<b>10,807</b>	<b>764</b>	<b>196</b>	<b>788</b>	<b>24</b>	<b>29</b>
<b>2007 9-Month Total</b> .....	<b>1,425</b>	<b>636</b>	<b>63</b>	<b>28</b>	<b>17,301</b>	<b>17,523</b>	<b>901</b>	<b>211</b>	<b>871</b>	<b>26</b>	<b>58</b>
<b>2006 9-Month Total</b> .....	<b>1,407</b>	<b>725</b>	<b>65</b>	<b>27</b>	<b>19,033</b>	<b>17,048</b>	<b>833</b>	<b>212</b>	<b>908</b>	<b>25</b>	<b>58</b>

<sup>a</sup> Commercial combined-heat-and-power (CHP) and commercial electricity-only plants.

<sup>b</sup> Industrial combined-heat-and-power (CHP) and industrial electricity-only plants.

<sup>c</sup> Anthracite, bituminous coal, subbituminous coal, lignite, waste coal, and coal synfuel.

<sup>d</sup> Distillate fuel oil, residual fuel oil, petroleum coke, jet fuel, kerosene, other petroleum, and waste oil.

<sup>e</sup> Natural gas, plus a small amount of supplemental gaseous fuels.

<sup>f</sup> Municipal solid waste from biogenic sources, landfill gas, sludge waste, agricultural byproducts, and other biomass. Through 2000, also includes non-renewable waste (municipal solid waste from non-biogenic sources, and tire-derived fuels).

<sup>g</sup> Blast furnace gas, propane gas, and other manufactured and waste gases derived from fossil fuels.

<sup>h</sup> Wood and wood-derived fuels.

<sup>i</sup> Batteries, chemicals, hydrogen, pitch, purchased steam, sulfur, miscellaneous technologies, and, beginning in 2001, non-renewable waste (municipal solid waste from non-biogenic sources, and tire-derived fuels).

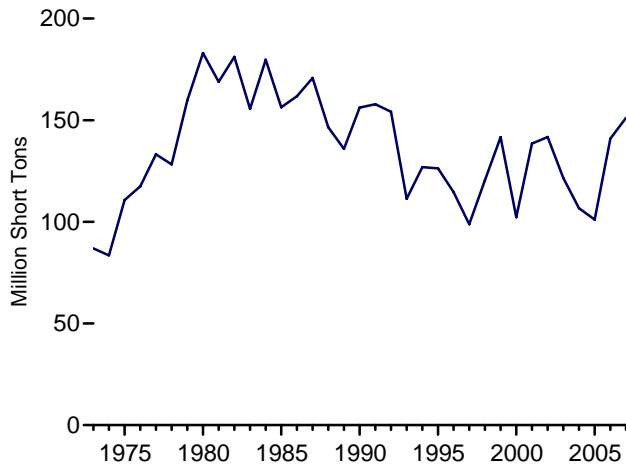
Notes: • Data are for fuels consumed to produce electricity and useful thermal output. Through 1988, data are not available. • See Note, "Classification of Power Plants Into Energy-Use Sectors," at end of section. • Totals may not equal sum of components due to independent rounding. • Geographic coverage is the 50 States and the District of Columbia.

Web Page: See <http://www.eia.doe.gov/emeu/mer/elect.html> for all available data beginning in 1989.

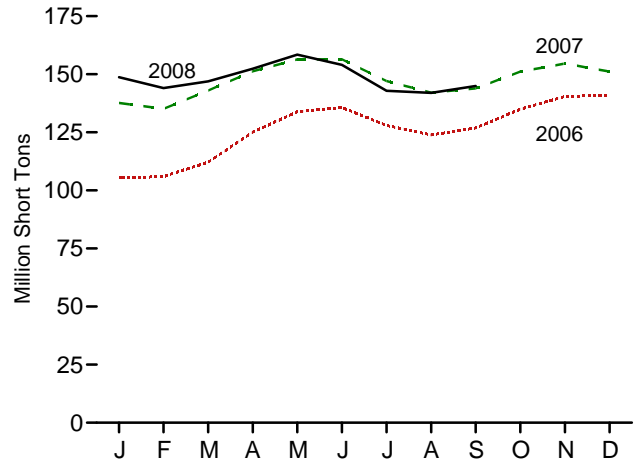
Sources: • **1989-1997:** Energy Information Administration (EIA), Form EIA-867, "Annual Nonutility Power Producer Report." • **1998-2000:** EIA, Form EIA-860B, "Annual Electric Generator Report—Nonutility." • **2001-2003:** EIA, Form EIA-906, "Power Plant Report." • **2004-2007:** EIA, Form EIA-906, "Power Plant Report," and Form EIA-920, "Combined Heat and Power Plant Report." • **2008:** EIA, Form EIA-923, "Power Plant Operations Report."

**Figure 7.5 Stocks of Coal and Petroleum: Electric Power Sector**

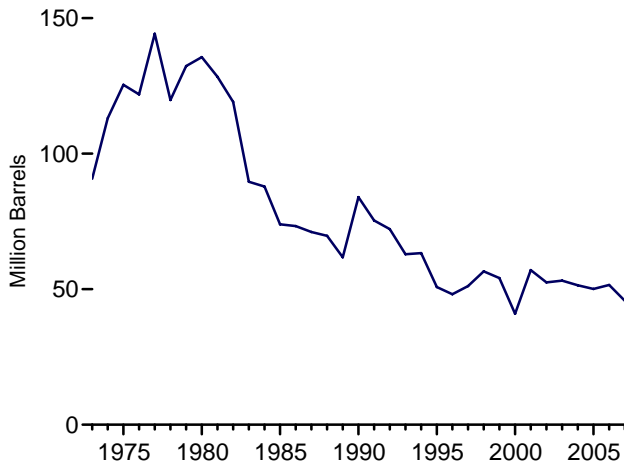
Coal, 1973-2007



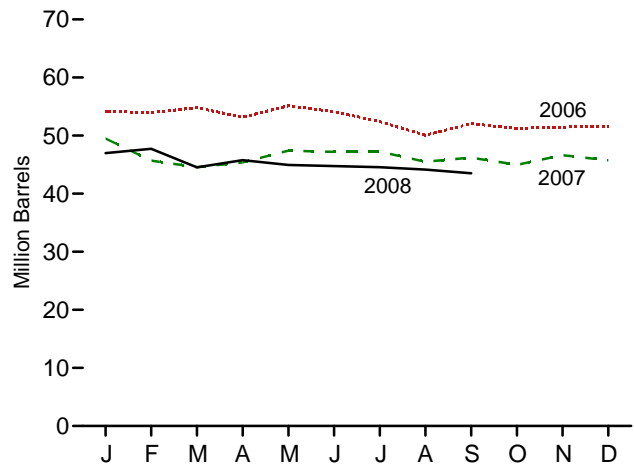
Coal, Monthly



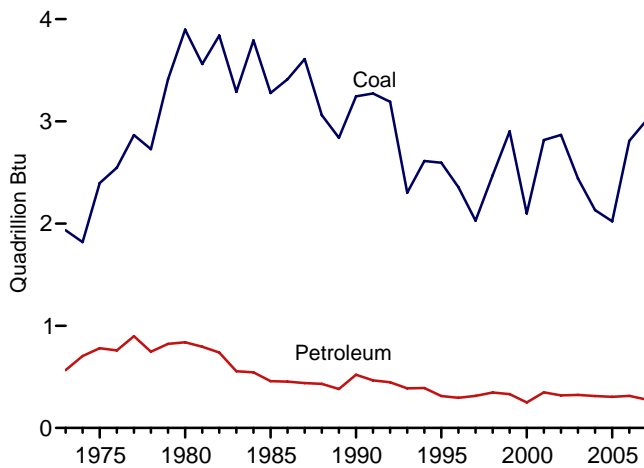
Total Petroleum, 1973-2007



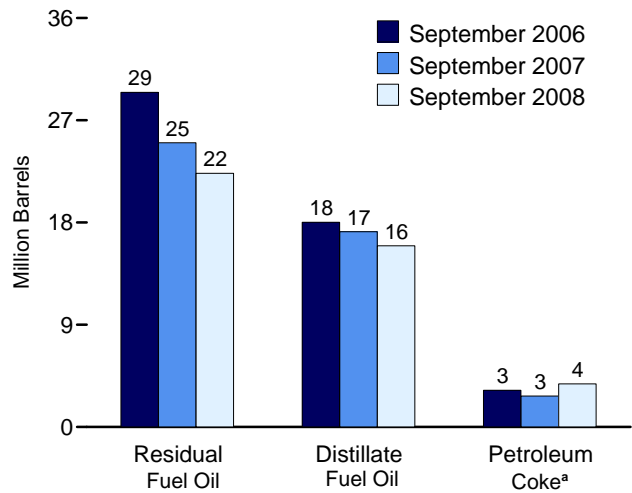
Total Petroleum, Monthly



Coal and Petroleum Stocks, 1973-2007



Petroleum by Major Type, End of Month



<sup>a</sup>Converted from short tons to barrels by multiplying by five.  
Note: Because vertical scales differ, graphs should not be compared.

Web Page: <http://www.eia.doe.gov/emeu/mer/elect.html>.  
Sources: Tables 7.5, A1, and A5 (column 6).



**Table 7.5 Stocks of Coal and Petroleum: Electric Power Sector**

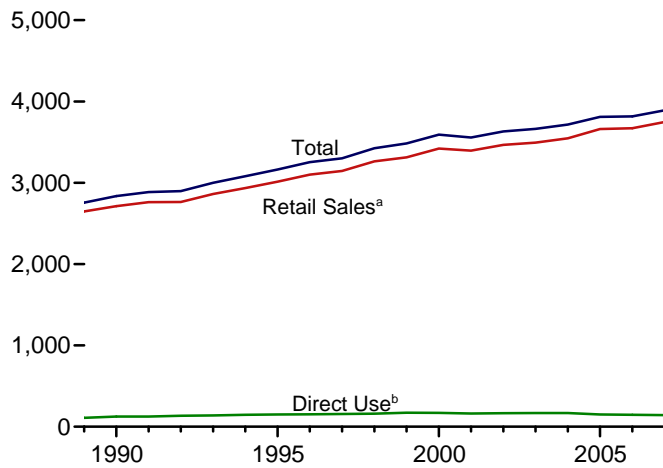
	Coal <sup>a</sup>	Petroleum				
		Distillate Fuel Oil <sup>b</sup>	Residual Fuel Oil <sup>c</sup>	Other Liquids <sup>d</sup>	Petroleum Coke <sup>e</sup>	Total <sup>e</sup>
	Thousand Short Tons	Thousand Barrels			Thousand Short Tons	Thousand Barrels
<b>1973 Year</b> .....	<b>86,967</b>	<b>10,095</b>	<b>79,121</b>	<b>NA</b>	<b>312</b>	<b>90,776</b>
<b>1975 Year</b> .....	<b>110,724</b>	<b>16,432</b>	<b>108,825</b>	<b>NA</b>	<b>31</b>	<b>125,413</b>
<b>1980 Year</b> .....	<b>183,010</b>	<b>30,023</b>	<b>105,351</b>	<b>NA</b>	<b>52</b>	<b>135,635</b>
<b>1985 Year</b> .....	<b>156,376</b>	<b>16,386</b>	<b>57,304</b>	<b>NA</b>	<b>49</b>	<b>73,933</b>
<b>1990 Year</b> .....	<b>156,166</b>	<b>16,471</b>	<b>67,030</b>	<b>NA</b>	<b>94</b>	<b>83,970</b>
<b>1995 Year</b> .....	<b>126,304</b>	<b>15,392</b>	<b>35,102</b>	<b>NA</b>	<b>65</b>	<b>50,821</b>
<b>1996 Year</b> .....	<b>114,623</b>	<b>15,216</b>	<b>32,473</b>	<b>NA</b>	<b>91</b>	<b>48,146</b>
<b>1997 Year</b> .....	<b>98,826</b>	<b>15,456</b>	<b>33,336</b>	<b>NA</b>	<b>469</b>	<b>51,138</b>
<b>1998 Year</b> .....	<b>120,501</b>	<b>16,343</b>	<b>37,451</b>	<b>NA</b>	<b>559</b>	<b>56,591</b>
<b>1999 Year</b> <sup>f</sup> .....	<b>141,604</b>	<b>17,995</b>	<b>34,256</b>	<b>NA</b>	<b>372</b>	<b>54,109</b>
<b>2000 Year</b> .....	<b>102,296</b>	<b>15,127</b>	<b>24,748</b>	<b>NA</b>	<b>211</b>	<b>40,932</b>
<b>2001 Year</b> .....	<b>138,496</b>	<b>20,486</b>	<b>34,594</b>	<b>NA</b>	<b>390</b>	<b>57,031</b>
<b>2002 Year</b> .....	<b>141,714</b>	<b>17,413</b>	<b>25,723</b>	<b>800</b>	<b>1,711</b>	<b>52,490</b>
<b>2003 Year</b> .....	<b>121,567</b>	<b>19,153</b>	<b>25,820</b>	<b>779</b>	<b>1,484</b>	<b>53,170</b>
<b>2004 Year</b> .....	<b>106,669</b>	<b>19,275</b>	<b>26,596</b>	<b>879</b>	<b>937</b>	<b>51,434</b>
<b>2005 Year</b> .....	<b>101,137</b>	<b>18,778</b>	<b>27,624</b>	<b>1,012</b>	<b>530</b>	<b>50,062</b>
<b>2006</b> January .....	105,401	18,413	31,748	1,058	587	54,151
February .....	105,986	18,393	31,335	1,075	633	53,966
March .....	112,141	18,346	31,881	1,087	700	54,813
April .....	125,097	18,156	30,641	1,101	650	53,148
May .....	133,841	18,156	32,462	1,094	684	55,132
June .....	135,734	18,199	31,503	1,082	665	54,110
July .....	127,894	18,044	30,198	1,081	615	52,401
August .....	123,884	18,093	27,979	1,082	580	50,056
September .....	126,872	18,024	29,456	1,343	647	52,059
October .....	134,941	17,852	28,367	1,330	736	51,228
November .....	140,442	17,987	28,292	1,336	771	51,472
<b>December</b> .....	<b>140,964</b>	<b>18,013</b>	<b>28,823</b>	<b>1,380</b>	<b>674</b>	<b>51,583</b>
<b>2007</b> January .....	137,606	17,465	27,107	1,390	703	49,477
February .....	135,096	17,137	23,569	1,342	730	45,697
March .....	142,986	16,875	23,145	1,303	649	44,569
April .....	151,296	16,721	23,935	1,309	683	45,381
May .....	156,354	16,739	25,980	1,327	668	47,385
June .....	156,412	16,943	26,178	1,322	552	47,201
July .....	147,047	17,020	25,503	1,316	677	47,223
August .....	142,067	16,944	24,342	1,302	582	45,496
September .....	143,890	17,184	25,024	1,288	546	46,224
October .....	151,141	17,673	23,274	1,308	545	44,981
November .....	154,551	17,629	24,632	1,305	610	46,619
<b>December</b> .....	<b>151,127</b>	<b>17,579</b>	<b>24,081</b>	<b>1,325</b>	<b>550</b>	<b>45,733</b>
<b>2008</b> January .....	148,707	18,927	23,674	1,422	590	46,973
February .....	144,011	19,593	23,926	1,459	551	47,730
March .....	146,952	16,851	22,893	1,412	676	44,537
April .....	152,349	16,355	24,238	1,449	744	45,761
May .....	158,422	16,229	23,336	1,446	787	44,945
June .....	154,041	15,663	23,866	1,449	755	44,754
July .....	142,863	15,955	23,068	1,445	818	44,558
August .....	141,957	15,851	22,917	1,445	786	44,145
September .....	144,948	15,949	22,325	1,436	760	43,509

<sup>a</sup> Anthracite, bituminous coal, subbituminous coal, and lignite.  
<sup>b</sup> Fuel oil nos. 1, 2 and 4. For 1973-1979, data are for gas turbine and internal combustion plant stocks of petroleum. For 1980-2000, electric utility data also include small amounts of kerosene and jet fuel.  
<sup>c</sup> Fuel oil nos. 5 and 6. For 1973-1979, data are for steam plant stocks of petroleum. For 1980-2000, electric utility data also include a small amount of fuel oil no. 4.  
<sup>d</sup> Jet fuel and kerosene. Through 2003, data also include a small amount of waste oil.  
<sup>e</sup> Petroleum coke is converted from short tons to barrels by multiplying by 5.  
<sup>f</sup> Through 1998, data are for electric utilities only. Beginning in 1999, data are for electric utilities and independent power producers.  
 NA=Not available.  
 Notes: • The electric power sector comprises electricity-only and combined-heat-and-power (CHP) plants within the NAICS 22 category whose primary business is to sell electricity, or electricity and heat, to the public. • Stocks

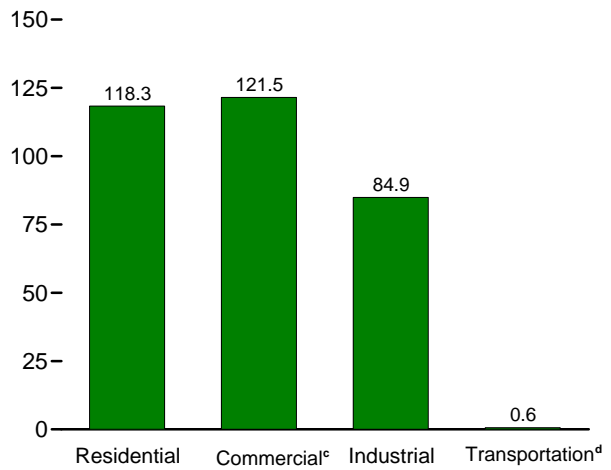
are at end of period. • Totals may not equal sum of components due to independent rounding. • Geographic coverage is the 50 States and the District of Columbia.  
 Web Page: See <http://www.eia.doe.gov/emeu/mer/elect.html> for all available data beginning in 1973.  
 Sources: • **1973-September 1977:** Federal Power Commission, Form FPC-4, "Monthly Power Plant Report." • **October 1977-1981:** Federal Energy Regulatory Commission, Form FPC-4, "Monthly Power Plant Report." • **1982-1988:** Energy Information Administration (EIA), Form EIA-759, "Monthly Power Plant Report." • **1989-1997:** EIA, Form EIA-759, "Monthly Power Plant Report," and Form EIA-867, "Annual Nonutility Power Producer Report." • **1998-2000:** EIA, Form EIA-759, "Monthly Power Plant Report," and Form EIA-860B, "Annual Electric Generator Report—Nonutility." • **2001-2003:** Form EIA-906, "Power Plant Report"; • **2004-2007:** EIA, Form EIA-906, "Power Plant Report," and Form EIA-920, "Combined Heat and Power Plant Report." • **2008:** EIA, Form EIA-923, "Power Plant Operations Report."

**Figure 7.6 Electricity End Use**  
(Billion Kilowatthours)

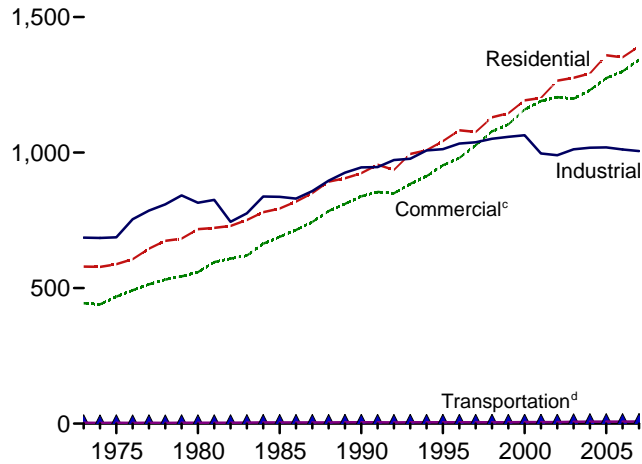
Electricity End Use Overview, 1989-2007



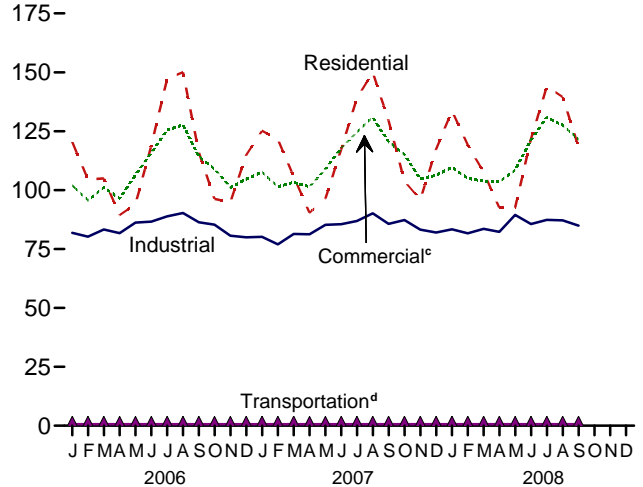
Retail Sales^a by Sector, September 2008



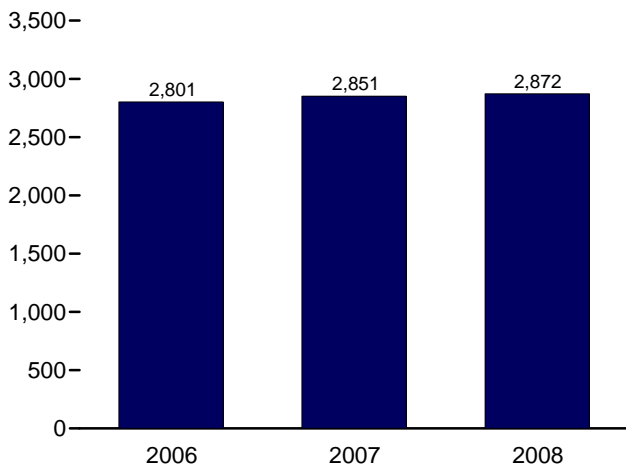
Retail Sales^a by Sector, 1973-2007



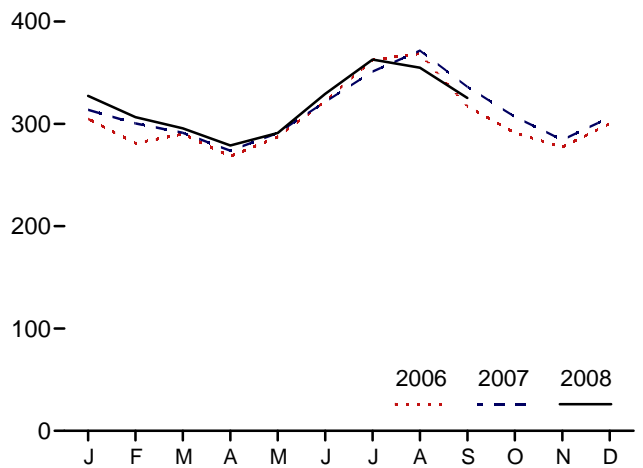
Retail Sales^a by Sector, Monthly



Retail Sales^a Total, January-September



Retail Sales^a Total, Monthly



<sup>a</sup>Electricity retail sales to ultimate customers reported by electric utilities and other energy service providers.

<sup>b</sup>See "Direct Use" in Glossary.

<sup>c</sup>Commercial sector, including public street and highway lighting, interdepartmental sales, and other sales to public authorities.

<sup>d</sup>Transportation sector, including sales to railroads and railways.

Note: Because vertical scales differ, graphs should not be compared.

Web Page: <http://www.eia.doe.gov/emeu/mer/elect.html>.

Source: Table 7.6.

**Table 7.6 Electricity End Use**  
(Million Kilowatthours)

	Retail Sales <sup>a</sup>					Direct Use <sup>f</sup>	Total End Use <sup>g</sup>	Discontinued Retail Sales Series	
	Residential	Commercial <sup>b</sup>	Industrial <sup>c</sup>	Transportation <sup>d</sup>	Total Retail Sales <sup>e</sup>			Commercial (Old) <sup>h</sup>	Other (Old) <sup>i</sup>
<b>1973 Total</b> .....	579,231	<sup>E</sup> 444,505	686,085	<sup>E</sup> 3,087	1,712,909	NA	1,712,909	388,266	59,326
<b>1975 Total</b> .....	588,140	<sup>E</sup> 468,296	687,680	<sup>E</sup> 2,974	1,747,091	NA	1,747,091	403,049	68,222
<b>1980 Total</b> .....	717,495	558,643	815,067	3,244	2,094,449	NA	2,094,449	488,155	73,732
<b>1985 Total</b> .....	793,934	689,121	836,772	4,147	2,323,974	NA	2,323,974	605,989	87,279
<b>1990 Total</b> .....	924,019	838,263	945,522	4,751	2,712,555	124,529	2,837,084	751,027	91,988
<b>1995 Total</b> .....	1,042,501	953,117	1,012,693	4,975	3,013,287	150,677	3,163,963	862,685	95,407
<b>1996 Total</b> .....	1,082,512	980,061	1,033,631	4,923	3,101,127	152,638	3,253,765	887,445	97,539
<b>1997 Total</b> .....	1,075,880	1,026,626	1,038,197	4,907	3,145,610	156,239	3,301,849	928,633	102,901
<b>1998 Total</b> .....	1,130,109	1,077,957	1,051,203	4,962	3,264,231	160,866	3,425,097	979,401	103,518
<b>1999 Total</b> .....	1,144,923	1,103,821	1,058,217	5,126	3,312,087	171,629	3,483,716	1,001,996	106,952
<b>2000 Total</b> .....	1,192,446	1,159,347	1,064,239	5,382	3,421,414	170,943	3,592,357	1,055,232	109,496
<b>2001 Total</b> .....	1,201,607	1,190,518	996,609	5,724	3,394,458	162,649	3,557,107	1,083,069	113,174
<b>2002 Total</b> .....	1,265,180	1,204,531	990,238	5,517	3,465,466	166,184	3,631,650	1,104,497	105,552
<b>2003 Total</b> .....	1,275,824	1,198,728	1,012,373	6,810	3,493,734	168,295	3,662,029	--	--
<b>2004 Total</b> .....	1,291,982	1,230,425	1,017,850	7,224	3,547,479	168,470	3,715,949	--	--
<b>2005 Total</b> .....	1,359,227	1,275,079	1,019,156	7,506	3,660,969	150,016	3,810,984	--	--
<b>2006</b>									
January .....	120,419	101,933	81,865	649	304,866	<sup>R</sup> 12,339	<sup>R</sup> 317,205	--	--
February .....	104,511	95,713	80,207	615	281,046	<sup>R</sup> 11,042	<sup>R</sup> 292,088	--	--
March .....	104,955	101,115	83,264	636	289,970	<sup>R</sup> 11,638	<sup>R</sup> 301,608	--	--
April .....	89,374	96,551	81,696	587	268,208	<sup>R</sup> 11,060	<sup>R</sup> 279,268	--	--
May .....	94,000	106,442	86,179	577	287,198	<sup>R</sup> 12,006	<sup>R</sup> 299,204	--	--
June .....	118,815	115,785	86,630	609	321,840	<sup>R</sup> 11,860	<sup>R</sup> 333,700	--	--
July .....	147,338	125,541	88,880	627	362,387	<sup>R</sup> 13,013	<sup>R</sup> 375,399	--	--
August .....	150,064	127,655	90,285	630	368,634	<sup>R</sup> 13,044	<sup>R</sup> 381,678	--	--
September .....	116,072	114,231	86,364	615	317,282	<sup>R</sup> 11,850	<sup>R</sup> 329,133	--	--
October .....	96,246	109,000	85,337	602	291,186	<sup>R</sup> 12,285	<sup>R</sup> 303,471	--	--
November .....	94,843	101,104	80,653	582	277,182	<sup>R</sup> 11,560	<sup>R</sup> 288,742	--	--
December .....	114,882	104,673	79,937	627	300,119	<sup>E</sup> 12,252	<sup>R</sup> 312,371	--	--
<b>Total</b> .....	<b>1,351,520</b>	<b>1,299,744</b>	<b>1,011,298</b>	<b>7,358</b>	<b>3,669,919</b>	<b>143,949</b>	<b><sup>R</sup> 3,813,868</b>	--	--
<b>2007</b>									
January .....	125,172	107,699	80,139	724	313,735	<sup>E</sup> 12,447	326,182	--	--
February .....	121,440	101,435	77,001	663	300,539	<sup>E</sup> 11,118	311,657	--	--
March .....	105,785	103,342	81,385	717	291,229	<sup>E</sup> 11,784	303,013	--	--
April .....	90,362	101,429	81,283	602	273,677	<sup>E</sup> 11,379	285,056	--	--
May .....	96,368	108,873	85,280	597	291,118	<sup>E</sup> 11,825	302,943	--	--
June .....	117,340	117,878	85,514	631	321,363	<sup>E</sup> 11,835	333,198	--	--
July .....	138,960	124,611	86,870	638	351,079	<sup>E</sup> 12,490	363,569	--	--
August .....	149,978	130,920	90,145	643	371,686	<sup>E</sup> 12,962	384,648	--	--
September .....	129,475	120,415	85,675	648	336,214	<sup>E</sup> 11,957	348,171	--	--
October .....	103,770	115,095	87,330	617	306,812	<sup>E</sup> 12,072	318,884	--	--
November .....	95,892	104,651	83,188	637	284,368	<sup>E</sup> 11,584	295,953	--	--
December .....	117,367	106,325	82,019	619	306,330	<sup>E</sup> 12,102	318,432	--	--
<b>Total</b> .....	<b>1,391,911</b>	<b>1,342,673</b>	<b>1,005,828</b>	<b>7,738</b>	<b>3,748,149</b>	<b><sup>E</sup> 143,556</b>	<b>3,891,705</b>	--	--
<b>2008</b>									
January .....	133,623	109,646	83,368	693	327,330	<sup>E</sup> 12,296	339,626	--	--
February .....	119,138	105,045	81,678	668	306,528	<sup>E</sup> 11,218	317,747	--	--
March .....	107,602	103,826	83,585	634	295,647	<sup>E</sup> 11,383	307,030	--	--
April .....	92,513	103,506	82,281	614	278,913	<sup>E</sup> 10,916	289,829	--	--
May .....	92,559	108,472	89,497	596	291,124	<sup>E</sup> 11,210	302,333	--	--
June .....	121,758	121,321	85,618	622	329,319	<sup>E</sup> 11,554	340,873	--	--
July .....	144,003	130,907	87,370	644	362,925	<sup>E</sup> 12,501	375,426	--	--
August .....	139,511	127,484	87,189	640	354,824	<sup>E</sup> 12,267	367,091	--	--
September .....	118,343	121,521	84,899	625	325,388	<sup>E</sup> 10,077	335,465	--	--
<b>9-Month Total</b> .....	<b>1,069,051</b>	<b>1,031,729</b>	<b>765,484</b>	<b>5,734</b>	<b>2,871,998</b>	<b><sup>E</sup> 103,423</b>	<b>2,975,420</b>	--	--
<b>2007 9-Month Total</b> .....	<b>1,074,882</b>	<b>1,016,602</b>	<b>753,291</b>	<b>5,865</b>	<b>2,850,639</b>	<b><sup>E</sup> 107,798</b>	<b>2,958,437</b>	--	--
<b>2006 9-Month Total</b> .....	<b>1,045,549</b>	<b>984,967</b>	<b>765,370</b>	<b>5,545</b>	<b>2,801,432</b>	<b><sup>E</sup> 110,095</b>	<b>2,911,527</b>	--	--

<sup>a</sup> Electricity retail sales to ultimate customers reported by electric utilities and, beginning in 1996, other energy service providers.

<sup>b</sup> Commercial sector, including public street and highway lighting, interdepartmental sales, and other sales to public authorities.

<sup>c</sup> Industrial sector. Through 2002, excludes agriculture and irrigation; beginning in 2003, includes agriculture and irrigation.

<sup>d</sup> Transportation sector, including sales to railroads and railways.

<sup>e</sup> The sum of "Residential," "Commercial," "Industrial," and "Transportation."

<sup>f</sup> Use of electricity that is 1) self-generated, 2) produced by either the same entity that consumes the power or an affiliate, and 3) used in direct support of a service or industrial process located within the same facility or group of facilities that house the generating equipment. Direct use is exclusive of station use.

<sup>g</sup> The sum of "Total Retail Sales" and "Direct Use."

<sup>h</sup> "Commercial (Old)" is a discontinued series—data are for the commercial sector, excluding public street and highway lighting, interdepartmental sales, and other sales to public authorities.

<sup>i</sup> "Other (Old)" is a discontinued series—data are for public street and highway lighting, interdepartmental sales, other sales to public authorities, agriculture and irrigation, and transportation including railroads and railways.

E=Estimate. NA=Not available. --=Not applicable.

Notes: • Totals may not equal sum of components due to independent rounding. • Geographic coverage is the 50 States and the District of Columbia.

Web Page: See <http://www.eia.doe.gov/emeu/mer/elect.html> for all available data beginning in 1973.

Sources: See end of section.

## Electricity

**Note. Classification of Power Plants Into Energy-Use Sectors.** The Energy Information Administration (EIA) classifies power plants (both electricity-only and combined-heat-and-power plants) into energy-use sectors based on the North American Industry Classification System (NAICS), which replaced the Standard Industrial Classification (SIC) system in 1997. Plants with a NAICS code of 22 are assigned to the Electric Power Sector. Those with NAICS codes beginning with 11 (agriculture, forestry, fishing, and hunting); 21 (mining, including oil and gas extraction); 23 (construction); 31–33 (manufacturing); 2212 (natural gas distribution); and 22131 (water supply and irrigation systems) are assigned to the Industrial Sector. Those with all other codes are assigned to the Commercial Sector. Form EIA-860, “Annual Electric Generator Report,” asks respondents to indicate the primary purpose of the facility by assigning a NAICS code from the list at:

<http://www.eia.doe.gov/cneaf/electricity/forms/eia860/eia860.doc>.

### Table 7.1 Sources

#### Net Generation, Electric Power Sector

Table 7.2b.

#### Net Generation, Commercial and Industrial Sectors

Table 7.2c.

#### Imports and Exports, Electricity Trade With Canada and Mexico, 1973–1989

1973–September 1977: Unpublished Federal Power Commission data.

October 1977–1980: Unpublished Economic Regulatory Administration (ERA) data.

1981: Department of Energy (DOE), Office of Energy Emergency Operations, “Report on Electric Energy Exchanges with Canada and Mexico for Calendar Year 1981,” April 1982 (revised June 1982).

1982 and 1983: DOE, ERA, *Electricity Exchanges Across International Borders*.

1984–1986: DOE, ERA, *Electricity Transactions Across International Borders*.

1987 and 1988: DOE, ERA, Form ERA-781R, “Annual Report of International Electrical Export/Import Data.”

1989: DOE, Fossil Energy, Form FE-781R, “Annual Report of International Electrical Export/Import Data.”

#### Imports and Exports, Electricity Trade with Canada, 1990 Forward

National Energy Board of Canada, data for total sales (firm and interruptible; which exclude non-revenue, inadvertent, and service) from Canada to the United States, and data for total purchases (which exclude non-revenue, inadvertent,

and service) by Canada from the United States.

#### Imports and Exports, Electricity Trade with Mexico, 1990 Forward

DOE, Fossil Energy, Office of Fuels Programs, Form FE-781R, “Annual Report of International Electrical Export/Import Data.” For 2001 forward, data from the California Independent System Operator were used in combination with the Form FE-781R values to estimate electricity trade with Mexico.

#### T&D Losses and Unaccounted for

Calculated as the sum of total net generation and imports minus end use and exports.

#### End Use

Table 7.6.

### Table 7.2b Sources

1973–September 1977: Federal Power Commission, Form FPC-4, “Monthly Power Plant Report.”

October 1977–1981: Federal Energy Regulatory Commission, Form FPC-4, “Monthly Power Plant Report.”

1982–1988: Energy Information Administration (EIA), Form EIA-759, “Monthly Power Plant Report.”

1989–1997: EIA, Form EIA-759, “Monthly Power Plant Report,” and Form EIA-867, “Annual Nonutility Power Producer Report.”

1998–2000: EIA, Form EIA-759, “Monthly Power Plant Report,” and Form EIA-860B, “Annual Electric Generator Report–Nonutility.”

2001–2003: EIA, Form EIA-906, “Power Plant Report.”

2004–2007: EIA, Form EIA-906, “Power Plant Report,” and Form EIA-920, “Combined Heat and Power Plant Report.”

2008: EIA, Form EIA-923, “Power Plant Operations Report.”

### Table 7.2c Sources

#### Industrial Sector, Hydroelectric Power, 1973–1988

1973–September 1977: Federal Power Commission (FPC), Form FPC-4, “Monthly Power Plant Report,” for plants with generating capacity exceeding 10 megawatts, and FPC, Form FPC-12C, “Industrial Electric Generating Capacity,” for all other plants.

October 1977–1978: Federal Energy Regulatory Commission (FERC), Form FPC-4, “Monthly Power Plant Report,” for plants with generating capacity exceeding 10 megawatts, and FERC, Form FPC-12C, “Industrial Electric Generating Capacity,” for all other plants.

1979: FERC, Form FPC-4, “Monthly Power Plant Report,” for plants with generating capacity exceeding 10 megawatts, and Energy Information Administration (EIA) estimates for all other plants.

1980–1988: Estimated by EIA as the average generation over the 6-year period of 1974–1979.

### All Data, 1989 Forward

1989–1997: EIA, Form EIA-867, “Annual Nonutility Power Producer Report.”

1998–2000: EIA, Form EIA-860B, “Annual Electric Generator Report—Nonutility.”

2001–2003: EIA, Form EIA-906, “Power Plant Report.”

2004–2007: EIA, Form EIA-906, “Power Plant Report,” and Form EIA-920, “Combined Heat and Power Plant Report.”

2008: EIA, Form EIA-923, “Power Plant Operations Report.”

### Table 7.3b Sources

1973–September 1977: Federal Power Commission, Form FPC-4, “Monthly Power Plant Report.”

October 1977–1981: Federal Energy Regulatory Commission, Form FPC-4, “Monthly Power Plant Report.”

1982–1988: Energy Information Administration (EIA), Form EIA-759, “Monthly Power Plant Report.”

1989–1997: EIA, Form EIA-759, “Monthly Power Plant Report,” and Form EIA-867, “Annual Nonutility Power Producer Report.”

1998–2000: EIA, Form EIA-759, “Monthly Power Plant Report,” and Form EIA-860B, “Annual Electric Generator Report—Nonutility.”

2001–2003: EIA, Form EIA-906, “Power Plant Report.”

2004–2007: EIA, Form EIA-906, “Power Plant Report,” and Form EIA-920, “Combined Heat and Power Plant Report.”

2008: EIA, Form EIA-923, “Power Plant Operations Report.”

### Table 7.4b Sources

1973–September 1977: Federal Power Commission, Form FPC-4, “Monthly Power Plant Report.”

October 1977–1981: Federal Energy Regulatory Commission, Form FPC-4, “Monthly Power Plant Report.”

1982–1988: Energy Information Administration (EIA), Form EIA-759, “Monthly Power Plant Report.”

1989–1997: EIA, Form EIA-759, “Monthly Power Plant Report,” and Form EIA-867, “Annual Nonutility Power Producer Report.”

1998–2000: EIA, Form EIA-759, “Monthly Power Plant Report,” and Form EIA-860B, “Annual Electric Generator Report—Nonutility.”

2001–2003: EIA, Form EIA-906, “Power Plant Report.”

2004–2007: EIA, Form EIA-906, “Power Plant Report,” and Form EIA-920, “Combined Heat and Power Plant Report.”

2008: EIA, Form EIA-923, “Power Plant Operations Report.”

### Table 7.6 Sources

#### Retail Sales, Residential and Industrial

1973–September 1977: Federal Power Commission, Form FPC-5, “Monthly Statement of Electric Operating Revenue and Income.”

October 1977–February 1980: Federal Energy Regulatory Commission (FERC), Form FPC-5, “Monthly Statement of Electric Operating Revenue and Income.”

March 1980–1982: FERC, Form FPC-5, “Electric Utility Company Monthly Statement.”

1983: Energy Information Administration (EIA), Form EIA-826, “Electric Utility Company Monthly Statement.”

1984–1993: EIA, Form EIA-861, “Annual Electric Utility Report.”

1994 forward: EIA, *Electric Power Monthly*, December 2008, Table 5.1.

#### Retail Sales, Commercial

1973–2002: Estimated by EIA as the sum of “Commercial (Old)” and the non-transportation portion of “Other (Old).” See estimation methodology at

[http://www.eia.doe.gov/emeu/states/sep\\_use/notes/use\\_elec.pdf](http://www.eia.doe.gov/emeu/states/sep_use/notes/use_elec.pdf).

2003 forward: EIA, *Electric Power Monthly*, December 2008, Table 5.1.

#### Retail Sales, Transportation

1973–2002: Estimated by EIA as the transportation portion of “Other (Old).” See estimation methodology at

[http://www.eia.doe.gov/emeu/states/sep\\_use/notes/use\\_elec.pdf](http://www.eia.doe.gov/emeu/states/sep_use/notes/use_elec.pdf).

2003 forward: EIA, *Electric Power Monthly*, December 2008, Table 5.1.

#### Direct Use, Annual

1989–1994: EIA, Form EIA-867, “Annual Nonutility Power Producer Report.”

1995–2006: EIA, *Electric Power Annual 2006*, October 2007, Table 7.2.

2007: Sum of monthly estimates.

#### Direct Use, Monthly

Annual shares are calculated as annual direct use divided by annual commercial and industrial net generation (on Table 7.1). Then monthly direct use estimates are calculated as the annual share multiplied by the monthly commercial and industrial net generation values. For 2007 and 2008, the 2006 annual share is used.

**Discontinued Retail Sales Series Commercial (Old) and Other (Old)** 1973–2002: See sources for “Residential” and “Industrial.”