

Table V-1  
CERVIX UTERI CANCER (Invasive)

TRENDS IN SEER INCIDENCE<sup>a</sup> AND U.S. MORTALITY<sup>b</sup> USING THE JOINPOINT REGRESSION PROGRAM, 1975-2003  
WITH UP TO THREE JOINPOINTS BY RACE AND AGE

		<u>Joinpoint Segment 1</u>		<u>Joinpoint Segment 2</u>		<u>Joinpoint Segment 3</u>		<u>Joinpoint Segment 4</u>	
		<u>Year</u>	<u>APC</u>	<u>Year</u>	<u>APC</u>	<u>Year</u>	<u>APC</u>	<u>Year</u>	<u>APC</u>
<u>SEER Cancer Incidence<sup>a</sup></u>									
All Races	All Ages	1975-1981	-4.5*	1981-1997	-1.2*	1997-2003	-4.5*		
All Races	Under 50	1975-1981	-3.7*	1981-1997	-0.5	1997-2003	-4.6*		
All Races	50 and Over	1975-1983	-4.9*	1983-1991	-0.9	1991-2003	-3.4*		
White	All Ages	1975-1982	-4.8*	1982-1990	0.5	1990-2003	-2.6*		
White	Under 50	1975-1981	-4.6*	1981-1989	1.3	1989-1998	-1.3	1998-2003	-4.2*
White	50 and Over	1975-1985	-4.6*	1985-1991	0.2	1991-2003	-3.6*		
Black	All Ages	1975-2003	-3.8*						
Black	Under 50	1975-2003	-3.4*						
Black	50 and Over	1975-2003	-4.0*						
<u>SEER Delay-Adjusted Incidence<sup>a</sup></u>									
All Races	All Ages	1975-1981	-4.6*	1981-1997	-1.1*	1997-2003	-4.3*		
All Races	Under 50	1975-1981	-3.7*	1981-1997	-0.4	1997-2003	-4.3*		
All Races	50 and Over	1975-1983	-4.9*	1983-1991	-0.9	1991-2003	-3.2*		
White	All Ages	1975-1982	-4.8*	1982-1990	0.5	1990-2003	-2.5*		
White	Under 50	1975-1982	-4.0*	1982-1989	2.1	1989-2003	-1.9*		
White	50 and Over	1975-1985	-4.6*	1985-1991	0.2	1991-2003	-3.4*		
Black	All Ages	1975-2003	-3.7*						
Black	Under 50	1975-2003	-3.3*						
Black	50 and Over	1975-2003	-3.9*						
<u>U.S. Cancer Mortality<sup>b</sup></u>									
All Races	All Ages	1975-1982	-4.3*	1982-1996	-1.6*	1996-2003	-3.8*		
All Races	Under 50	1975-1981	-3.8*	1981-1996	-0.7*	1996-2003	-4.0*		
All Races	50 and Over	1975-1984	-4.3*	1984-1994	-1.8*	1994-2003	-3.4*		
White	All Ages	1975-1983	-4.2*	1983-1996	-1.3*	1996-2003	-3.5*		
White	Under 50	1975-1979	-5.0*	1979-1997	-0.4*	1997-2003	-3.8*		
White	50 and Over	1975-1984	-4.6*	1984-1996	-1.8*	1996-2003	-3.5*		
Black	All Ages	1975-1981	-4.8*	1981-1993	-2.4*	1993-2003	-4.7*		
Black	Under 50	1975-2003	-3.3*						
Black	50 and Over	1975-1993	-3.0*	1993-2003	-4.3*				

Joinpoint Regression Program Version 3.1, April 2006, National Cancer Institute. (<http://srab.cancer.gov/joinpoint/>).

The APC is the Annual Percent Change based on rates age-adjusted to the 2000 US Std Population (19 age groups - Census P25-1130).

<sup>a</sup> Trends are from the SEER 9 areas (San Francisco, Connecticut, Detroit, Hawaii, Iowa, New Mexico, Seattle, Utah, and Atlanta).

<sup>b</sup> Trends are from the NCHS public use data file for the total US.

\* The APC is significantly different from zero (p<.05).

Table V-2  
CERVIX UTERI CANCER (Invasive)

AGE-ADJUSTED SEER INCIDENCE<sup>a</sup> RATES BY YEAR, RACE AND AGE

	<u>All Races, Females</u>			<u>White Females</u>			<u>Black Females</u>		
	<u>All</u>	<u>&lt;50</u>	<u>50+</u>	<u>All</u>	<u>&lt;50</u>	<u>50+</u>	<u>All</u>	<u>&lt;50</u>	<u>50+</u>
<u>SEER INCIDENCE RATES</u>									
<u>YEAR OF DIAGNOSIS:</u>									
1975	14.8	9.7	28.2	13.3	8.9	24.8	33.0	17.6	73.4
1976	14.2	9.5	26.7	12.9	8.8	23.7	29.3	15.8	64.4
1977	13.0	8.4	25.0	11.7	7.5	22.5	28.2	15.9	60.4
1978	12.5	8.3	23.6	11.4	7.8	20.9	24.1	12.4	55.0
1979	12.7	8.7	23.4	11.0	7.6	19.9	28.8	16.0	62.4
1980	12.2	8.1	23.0	11.0	7.3	20.6	23.5	13.6	49.4
1981	10.8	7.4	19.7	9.6	6.6	17.3	23.9	13.6	50.8
1982	10.6	7.1	19.8	9.4	6.7	16.5	21.8	10.2	52.4
1983	10.5	7.3	18.8	9.6	6.8	17.0	18.8	11.9	37.0
1984	11.0	8.0	19.0	10.0	7.4	16.7	21.0	12.4	43.3
1985	10.2	7.1	18.5	9.1	6.7	15.4	19.0	9.5	43.8
1986	10.8	7.9	18.6	9.7	7.3	16.0	18.4	10.7	38.5
1987	10.0	7.1	17.6	9.0	6.9	14.6	18.7	8.7	45.0
1988	10.6	7.9	17.7	9.5	7.4	15.0	19.0	10.4	41.3
1989	10.7	7.9	18.0	10.0	7.9	15.7	15.7	8.0	35.9
1990	10.6	8.0	17.5	9.9	7.7	15.8	16.7	9.6	35.2
1991	10.0	7.0	17.9	9.2	6.8	15.6	16.3	9.2	34.9
1992	9.9	7.5	16.4	9.4	7.2	15.2	13.9	9.9	24.5
1993	9.6	7.1	16.4	9.2	7.0	14.8	13.7	8.9	26.5
1994	9.4	6.9	16.1	8.7	6.8	13.7	14.0	6.9	32.6
1995	8.8	6.7	14.3	7.9	6.5	11.7	13.5	7.7	28.5
1996	9.6	7.3	15.5	8.7	7.1	13.0	14.1	8.0	30.0
1997	9.2	7.1	14.7	8.3	6.8	12.2	13.6	8.2	27.8
1998	9.1	7.1	14.4	8.4	6.8	12.5	12.9	8.9	23.6
1999	8.2	6.4	12.8	7.8	6.5	11.1	13.4	8.0	27.3
2000	7.7	5.8	12.5	7.4	5.9	11.3	10.1	6.3	20.1
2001	7.9	5.8	13.3	7.4	5.7	11.6	11.1	5.0	27.0
2002	7.3	5.6	11.8	6.9	5.6	10.3	10.3	6.4	20.7
2003	7.1	5.6	11.1	6.6	5.5	9.6	10.5	6.1	22.1
1975-2003	10.1	7.2	17.5	9.3	6.9	15.4	16.8	9.4	36.2

<sup>a</sup> SEER 9 areas (San Francisco, Connecticut, Detroit, Hawaii, Iowa, New Mexico, Seattle, Utah, and Atlanta). Rates are per 100,000 and are age-adjusted to the 2000 US Std Population (19 age groups - Census P25-1130).

- Statistic not shown. Rate based on less than 16 cases for the time interval.

Table V-3  
CERVIX UTERI CANCER (Invasive)

AGE-ADJUSTED U.S. DEATH<sup>a</sup> RATES BY YEAR, RACE AND AGE

	<u>All Races, Females</u>			<u>White Females</u>			<u>Black Females</u>		
	All	<50	50+	All	<50	50+	All	<50	50+
<u>U.S. DEATH RATES</u>									
YEAR OF DEATH:									
1975	5.6	2.4	13.9	4.7	1.9	12.1	13.3	5.7	33.3
1976	5.4	2.2	13.9	4.7	1.9	12.1	12.9	4.9	33.7
1977	5.0	2.0	12.7	4.2	1.6	11.0	12.2	5.0	31.1
1978	4.8	2.1	12.0	4.2	1.8	10.4	11.6	4.8	29.6
1979	4.6	1.9	11.6	3.9	1.6	10.2	10.6	4.5	26.7
1980	4.5	2.0	11.0	3.8	1.6	9.5	10.8	4.6	26.9
1981	4.3	1.8	10.9	3.7	1.6	9.4	9.9	3.7	26.0
1982	4.1	1.8	10.2	3.5	1.5	8.7	9.8	3.6	25.9
1983	4.0	1.8	9.9	3.4	1.5	8.4	9.8	3.9	25.2
1984	3.9	1.8	9.5	3.4	1.5	8.1	9.3	3.9	23.3
1985	3.8	1.7	9.4	3.3	1.5	7.9	9.0	3.4	23.7
1986	3.8	1.8	9.2	3.2	1.5	7.8	9.2	4.0	22.9
1987	3.6	1.7	8.6	3.1	1.5	7.4	8.2	3.6	20.3
1988	3.6	1.7	8.6	3.1	1.5	7.2	8.2	3.0	21.7
1989	3.6	1.7	8.5	3.0	1.5	7.1	8.6	3.3	22.6
1990	3.7	1.8	8.6	3.2	1.6	7.4	7.8	3.4	19.2
1991	3.5	1.7	8.2	3.0	1.5	7.0	7.6	3.2	19.4
1992	3.5	1.7	8.2	3.0	1.5	6.9	8.1	3.4	20.4
1993	3.4	1.7	8.0	2.9	1.5	6.8	7.7	3.1	19.6
1994	3.4	1.7	7.9	3.0	1.5	6.9	6.7	2.8	16.8
1995	3.2	1.6	7.5	2.8	1.5	6.4	7.0	3.0	17.5
1996	3.2	1.6	7.5	2.9	1.5	6.5	6.2	2.5	15.8
1997	3.1	1.6	7.2	2.8	1.4	6.2	6.5	2.8	16.0
1998	3.0	1.6	6.7	2.6	1.5	5.8	5.9	2.5	14.7
1999	2.8	1.4	6.7	2.6	1.3	5.8	5.4	1.9	14.6
2000	2.8	1.4	6.5	2.5	1.2	5.7	5.4	2.2	14.0
2001	2.7	1.4	6.1	2.4	1.3	5.4	4.8	1.9	12.4
2002	2.6	1.3	5.9	2.3	1.2	5.1	5.0	2.1	12.6
2003	2.5	1.2	5.7	2.2	1.2	5.1	4.7	1.9	11.8
1975-2003	3.6	1.7	8.7	3.2	1.5	7.5	7.9	3.2	20.3

<sup>a</sup> NCHS public use data file for the total US. Rates are per 100,000 and are age-adjusted to the 2000 US Std Population (19 age groups - Census P25-1130).

- Statistic not shown. Rate based on less than 16 cases for the time interval.

Table V-4  
CERVIX UTERI CANCER (Invasive)

SEER INCIDENCE<sup>a</sup> AND U.S. DEATH<sup>b</sup> RATES, AGE-ADJUSTED AND AGE-SPECIFIC RATES, BY RACE

	Incidence <sup>a</sup>			US Death <sup>b</sup>		
	All Races, Females	White Females	Black Females	All Races, Females	White Females	Black Females
<u>AGE-ADJUSTED RATES, 2000-2003</u>						
AGE AT DIAGNOSIS/DEATH:						
All ages	8.8	8.5	11.5	2.6	2.4	5.0
Under 65	8.1	8.1	9.3	2.0	1.8	3.2
65 and over	13.5	11.8	26.7	7.0	5.9	16.8
All ages(IARC world std) <sup>c</sup>	6.9	6.8	8.7	1.9	1.7	3.5
<u>AGE-SPECIFIC RATES, 2000-2003</u>						
AGE AT DIAGNOSIS/DEATH:						
<1	-	-	-	-	-	-
1-4	-	-	-	-	-	-
5-9	-	-	-	-	-	-
10-14	-	-	-	-	-	-
15-19	-	-	-	-	-	-
20-24	1.5	1.5	1.7	0.1	0.1	-
25-29	6.3	6.8	6.1	0.6	0.6	1.0
30-34	11.4	12.4	9.6	1.5	1.4	2.3
35-39	13.6	14.4	13.7	2.5	2.4	3.8
40-44	16.1	16.1	17.1	3.5	3.2	5.4
45-49	15.5	15.0	18.1	4.2	3.9	6.6
50-54	14.5	14.0	18.1	4.9	4.4	8.2
55-59	14.6	13.8	18.3	5.4	5.0	9.1
60-64	15.3	13.4	27.7	5.7	5.0	10.9
65-69	15.6	13.8	26.4	6.0	5.1	14.1
70-74	13.5	12.0	24.0	6.3	5.3	14.6
75-79	12.5	10.7	25.8	6.8	5.8	16.5
80-84	12.9	11.2	29.6	8.2	7.1	19.9
85+	11.6	9.6	31.0	9.4	8.0	24.3

<sup>a</sup> SEER 17 areas. Rates are per 100,000 and are age-adjusted to the 2000 US Std Population (19 age groups - Census P25-1130), unless noted.

<sup>b</sup> NCHS public use data file for the total US. Rates are per 100,000 and are age-adjusted to the 2000 US Std Population (19 age groups - Census P25-1130), unless noted.

<sup>c</sup> Rates are per 100,000 and are age-adjusted to the IARC world standard population.

- Statistic not shown. Rate based on less than 16 cases for the time interval.

Table V-5  
CERVIX UTERI CANCER (Invasive)

## SURVIVAL RATES, BY RACE, DIAGNOSIS YEAR, STAGE AND AGE

	All Races, Females			White Females			Black Females		
	All	<50	50+	All	<50	50+	All	<50	50+
<u>5-YR RELATIVE SURVIVAL RATES</u>									
YEAR OF DIAGNOSIS:									
1960-1963 <sup>a</sup>	-	-	-	58	-	-	47	-	-
1970-1973 <sup>a</sup>	-	-	-	64	-	-	61	-	-
1975-1977 <sup>b</sup>	69.8	82.3	58.5	70.6	83.8	58.9	64.8	75.4	54.9
1978-1980 <sup>b</sup>	68.4	78.3	58.9	69.2	79.8	59.4	61.7	70.6	52.7
1981-1983 <sup>b</sup>	68.2	79.4	56.5	68.9	80.7	56.3	61.6	73.7	49.4
1984-1986 <sup>b</sup>	67.9	77.6	56.3	70.0	79.6	57.7	58.4	67.7	48.7
1987-1989 <sup>b</sup>	70.9	79.4	59.4	73.6	82.6	59.9	58.4	63.8	53.1
1990-1992 <sup>b</sup>	70.3	78.6	58.4	71.9	81.1	58.1	58.6	63.0	52.4
1993-1995 <sup>b</sup>	73.1	81.6	60.5	74.7	83.5	60.5	64.3	70.6	55.7
1996-2002 <sup>b</sup>	73.3 <sup>e</sup>	81.9	60.0	74.6 <sup>e</sup>	83.9	59.0	66.3	70.4	60.4
<u>5-YR PERIOD SURVIVAL RATES<sup>cd</sup></u>									
YEAR OF DIAGNOSIS:									
1996-2002	71.6	79.9	59.4	72.7	81.4	59.0	63.2	68.8	56.1
<u>STAGE DISTRIBUTION (%) 1996-2002<sup>c</sup></u>									
All Stages									
Number of cases	16,192	9,231	6,961	12,380	7,305	5,075	2,103	1,120	983
Percent	100%	100%	100%	100%	100%	100%	100%	100%	100%
Localized	52	63	38	53	64	38	45	53	35
Regional	34	27	43	33	26	43	38	33	43
Distant	9	7	13	9	6	13	10	8	13
Unstaged	5	4	6	5	4	6	7	6	9
<u>5-YR RELATIVE SURVIVAL RATES, 1996-2002<sup>c</sup></u>									
AGE AT DIAGNOSIS:									
<45	81.5	-	-	83.1	-	-	70.4	-	-
45-54	70.1	-	-	71.2	-	-	58.8	-	-
55-64	62.7	-	-	61.5	-	-	59.9	-	-
65-74	59.9	-	-	59.0	-	-	53.8	-	-
75+	43.0	-	-	40.5	-	-	45.3 <sup>f</sup>	-	-
Under 65	75.1	-	-	76.5	-	-	65.3	-	-
65 and over	53.4	-	-	52.2	-	-	51.3	-	-
STAGE:									
All Stages	71.6	79.6	59.9	72.8	81.2	59.3	62.6	67.5	56.1
Localized	92.0	93.4	88.4	92.6	94.2	88.1	86.4	87.0	85.2
Regional	55.5	61.5	50.1	56.0	63.0	49.2	47.6	49.6	45.4
Distant	14.6	20.7	10.2	15.5	24.2	8.9	6.8	6.9	7.5
Unstaged	59.1	70.5	47.3	61.2	72.1	47.3	55.9 <sup>f</sup>	64.6 <sup>f</sup>	49.0 <sup>f</sup>

<sup>a</sup> Rates are based on End Results data from a series of hospital registries and one population-based registry.

<sup>b</sup> Rates are from the SEER 9 areas (San Francisco, Connecticut, Detroit, Hawaii, Iowa, New Mexico, Seattle, Utah, Atlanta).

Rates are based on follow-up of patients into 2003.

<sup>c</sup> Rates are from the SEER 17 areas (San Francisco, Connecticut, Detroit, Hawaii, Iowa, New Mexico, Seattle, Utah, Atlanta, San Jose-Monterey, Los Angeles, Alaska Native Registry, Rural Georgia, California excluding SF/SJM/LA, Kentucky, Louisiana and New Jersey). California excluding SF/SJM/LA, Kentucky, Louisiana, and New Jersey contribute cases for diagnosis years 2000-2002. The remaining 13 SEER Areas contribute cases for the entire period 1996-2002. Rates are based on follow-up of patients into 2003.

<sup>d</sup> Period survival provides a more up-to-date estimate of survival by piecing together the most recent conditional survival estimates from several cohorts. It is computed here using three calendar year blocks (2000-2002: 0-1 year survival), (1999-2001: 1-2 year survival), (1998-2000: 2-3 year survival), (1997-1999: 3-4 year survival), (1996-1998: 4-5 years survival).

<sup>e</sup> The difference in rates between 1975-1977 and 1996-2002 is statistically significant ( $p < .05$ ).

<sup>f</sup> The standard error of the survival rate is between 5 and 10 percentage points.

<sup>g</sup> The standard error of the survival rate is greater than 10 percentage points.

- Statistic could not be calculated due to fewer than 16 cases during the time period.

Table V-6  
CERVIX UTERI CANCER (Invasive)

SURVIVAL RATES<sup>a</sup>

By Year of Diagnosis

All Races, Females

Year of Diagnosis

	1975- 1979	1980- 1984	1985	1986	1987	1988	1989	1990	1991	1992	1993	1994	1995	1996	1997	1998	1999	2000	2001	2002
Relative Survival Rates (SEER <sup>b</sup> )																				
1-year	87.1	87.7	87.1	86.1	87.5	87.5	89.3	88.4	88.9	87.5	89.3	87.9	89.7	88.9	89.3	88.6	90.2	88.7	86.1	87.9
2-year	78.3	77.7	76.2	76.9	77.9	79.3	81.1	80.0	79.9	78.6	80.0	80.7	82.2	82.0	80.7	81.5	83.4	81.4	79.7	
3-year	73.6	73.3	71.5	71.8	72.7	75.7	76.3	75.9	74.7	74.6	75.9	76.9	78.8	77.8	76.0	77.0	79.0	76.5		
4-year	70.9	70.4	69.0	69.1	69.8	73.9	73.6	73.7	71.4	71.0	73.3	74.5	76.2	74.8	73.3	74.5	76.9			
5-year	69.1	68.7	67.2	66.8	67.7	73.1	71.8	72.7	69.4	68.8	71.4	73.1	75.0	74.0	72.2	73.0				
6-year	68.1	67.0	66.3	66.2	67.0	71.3	70.5	71.4	67.9	67.6	71.1	71.6	73.8	73.5	70.7					
7-year	67.3	65.5	65.2	65.1	66.3	70.4	69.6	70.7	67.4	66.9	70.4	70.5	72.6	72.8						
8-year	66.6	64.4	64.1	64.4	66.1	69.7	68.5	69.9	66.4	66.4	69.9	69.8	72.0							
9-year	66.1	64.0	63.3	64.4	65.6	69.4	67.8	68.1	65.8	66.1	69.6	69.6								
10-year	65.2	63.6	62.6	64.2	65.6	68.5	67.2	66.9	65.7	66.1	69.4									
11-year	64.7	63.3	62.5	63.8	65.4	68.5	66.6	66.7	65.6	65.5										
12-year	64.3	62.7	61.8	63.6	64.9	67.7	66.0	66.6	65.6											
13-year	64.0	62.5	61.5	63.6	64.3	67.2	65.7	66.4												
14-year	63.7	61.9	61.5	63.6	63.3	67.1	65.1													
15-year	63.3	61.4	61.4	63.1	63.1	66.4														
16-year	63.1	61.1	61.1	63.1	62.0															
17-year	62.8	60.5	60.8	62.6																
18-year	62.6	59.9	60.6																	
19-year	62.1	59.7																		
20-year	61.8																			

<sup>a</sup> Survival rates are relative rates expressed as percents.

<sup>b</sup> Rates are from the SEER 9 areas (San Francisco, Connecticut, Detroit, Hawaii, Iowa, New Mexico, Seattle, Utah, and Atlanta).

Table V-7  
CERVIX UTERI CANCER (Invasive)

Percent Diagnosed With Cancer In 10, 20 and 30 Years and In Remaining Lifetime,  
 Given Cancer Free At Current Age By Race

Lifetime Risk (Percent) of Being Diagnosed (17 SEER Areas) With Cancer and  
 Lifetime Risk (Percent) of Dying (Total U.S.) From Cancer

2001-2003

<u>Race/Ethnicity</u>	<u>Current Age</u>	<u>+10 yrs</u>	<u>+20 yrs</u>	<u>+30 yrs</u>	<u>Eventually</u>
All Races	0	0.00	0.00	0.04	0.73
	10	0.00	0.04	0.16	0.73
	20	0.04	0.16	0.31	0.73
	30	0.12	0.27	0.41	0.70
	40	0.15	0.29	0.42	0.58
	50	0.14	0.28	0.37	0.44
	60	0.14	0.25	0.30	0.32
White	0	0.00	0.00	0.04	0.69
	10	0.00	0.04	0.17	0.70
	20	0.04	0.17	0.31	0.70
	30	0.13	0.27	0.40	0.66
	40	0.15	0.28	0.40	0.54
	50	0.13	0.25	0.34	0.40
	60	0.13	0.22	0.26	0.28
Black	0	0.00	0.00	0.04	0.94
	10	0.00	0.04	0.15	0.96
	20	0.04	0.15	0.31	0.96
	30	0.11	0.27	0.44	0.93
	40	0.17	0.34	0.55	0.84
	50	0.18	0.40	0.56	0.70
	60	0.24	0.41	0.53	0.57
Asian/Pacific Islander	0	0.00	0.00	0.02	0.82
	10	0.00	0.02	0.09	0.83
	20	0.02	0.09	0.23	0.83
	30	0.07	0.21	0.37	0.82
	40	0.14	0.30	0.48	0.75
	50	0.16	0.34	0.49	0.61
	60	0.19	0.33	0.43	0.46
Hispanic <sup>a</sup>	0	0.00	0.00	0.04	1.22
	10	0.00	0.04	0.19	1.23
	20	0.04	0.19	0.43	1.23
	30	0.15	0.40	0.64	1.20
	40	0.25	0.50	0.75	1.06
	50	0.25	0.51	0.70	0.82
	60	0.27	0.47	0.56	0.59

<u>Race/Ethnicity</u>	<u>Lifetime Risk of Developing</u>	<u>Lifetime Risk of Dying</u>
All Races	0.73%	0.25%
White	0.69%	0.22%
Black	0.94%	0.44%
Asian/Pacific Islander	0.82%	0.32%
Hispanic <sup>a</sup>	1.22%	0.36%

Devcan Version 6.1.0, April 2006, National Cancer Institute (<http://srab.cancer.gov/devcan/>).

Source: Incidence data are from the SEER 17 areas (San Francisco, Connecticut, Detroit, Hawaii, Iowa, New Mexico, Seattle, Utah, Atlanta, San Jose-Monterey, Los Angeles, Alaska Native Registry, Rural Georgia, California excluding SF/SJM/LA, Kentucky, Louisiana and New Jersey). Mortality data are from the NCHS public use data file for the total US.

<sup>a</sup> Hispanic is not mutually exclusive from Whites, Blacks, Asian/Pacific Islanders, and American Indians/Alaska Natives. Underlying incidence data for Hispanics are based on NHIA and exclude cases from Hawaii, Seattle, Alaska Native Registry and Kentucky. Underlying mortality data for Hispanics exclude deaths from Minnesota, New Hampshire and North Dakota.

Table V-8  
CERVIX UTERI CANCER (Invasive)

SEER INCIDENCE AND U.S. MORTALITY  
AGE-ADJUSTED RATES AND TRENDS<sup>a</sup>  
 By Race/Ethnicity

SEER Incidence

RACE/ETHNICITY	Rate 2000-2003 <sup>b</sup>	Trend 1994-2003 <sup>c</sup>
	Rate per 100,000 persons	APC (%)
	Females	Females
All Races	8.8	-3.1*
White	8.5	-2.4*
White Hispanic <sup>d</sup>	14.6	-3.6*
White Non-Hispanic <sup>d</sup>	7.3	-2.5*
Black	11.5	-4.4*
Asian/Pacific Islander	8.2	-6.3*
Amer Ind/Alaska Nat <sup>e</sup>	7.2	-
Hispanic <sup>d</sup>	14.2	-3.5*

U.S. Mortality<sup>f</sup>

RACE/ETHNICITY	Rate 2000-2003	Trend 1994-2003
	Rate per 100,000 persons	APC (%)
	Females	Females
All Races	2.6	-3.4*
White	2.4	-3.2*
White Hispanic <sup>d</sup>	3.5	-4.1*
White Non-Hispanic <sup>d</sup>	2.3	-3.1*
Black	5.0	-4.5*
Asian/Pacific Islander	2.5	-4.0*
Amer Ind/Alaska Nat	2.8	-4.0
Hispanic <sup>d</sup>	3.4	-3.9*

- The APC is the Annual Percent Change over the time interval.
- Statistic not shown. Rate based on less than 16 cases for the time interval. Trend based on less than 10 cases for at least one year within the time interval.
- <sup>a</sup> Rates are age-adjusted to the 2000 US Std Population (19 age groups - Census P25-1130). Trends are based on rates age-adjusted to the 2000 US Std Population (19 age groups - Census P25-1130).
- <sup>b</sup> Incidence data used in calculating the rates are from the 17 SEER areas (San Francisco, Connecticut, Detroit, Hawaii, Iowa, New Mexico, Seattle, Utah, Atlanta, San Jose-Monterey, Los Angeles, Alaska Native Registry, Rural Georgia, California excluding SF/SJM/LA, Kentucky, Louisiana and New Jersey).
- <sup>c</sup> Incidence data used in calculating the trends are from the 13 SEER areas (San Francisco, Connecticut, Detroit, Hawaii, Iowa, New Mexico, Seattle, Utah, Atlanta, San Jose-Monterey, Los Angeles, Alaska Native Registry and Rural Georgia).
- <sup>d</sup> Hispanic and Non-Hispanic are not mutually exclusive from Whites, Blacks, Asian/Pacific Islanders, and American Indians/Alaska Natives. Incidence data for Hispanics and Non-Hispanics are based on NHIA and exclude cases from Hawaii, Seattle, Alaska Native Registry and Kentucky. The 2000-2003 Hispanic and Non-Hispanic death rates exclude deaths from Minnesota, New Hampshire and North Dakota. The 1994-2003 Hispanic and Non-Hispanic mortality trends exclude deaths from Maine, Minnesota, New Hampshire, North Dakota, and Oklahoma.
- <sup>e</sup> Incidence data for American Indians/Alaska Natives include cases from Connecticut, Detroit, Iowa, New Mexico, Seattle, Utah, Atlanta, and the Alaska Native Registry. Incidence rates are for diagnosis years 1999-2002. Incidence trends are for diagnosis years 1994-2002.
- <sup>f</sup> Mortality data are analyzed from a public use file provided by the National Center for Health Statistics (NCHS).
- \* The APC is significantly different from zero (p<.05).



Table V-9  
CERVIX UTERI CANCER (Invasive)

AGE-ADJUSTED SEER INCIDENCE RATES<sup>a</sup>  
 By Registry, Race/Ethnicity and Age

	All Races			Whites	Blacks	Asian/Pacific Islanders	Hispanics <sup>b</sup>
	All Ages	Ages <50	Ages 50+	All Ages	All Ages	All Ages	All Ages
<u>SEER INCIDENCE RATES<sup>a</sup>, 2000-2003</u>							
REGISTRY							
17 SEER Areas <sup>c</sup>	8.8	6.7	14.2	8.5	11.5	8.2	14.2
13 SEER Areas <sup>c</sup>	8.4	6.3	13.9	8.3	10.2	8.2	15.0
11 SEER Areas <sup>c</sup>	8.4	6.3	13.9	8.3	10.2	8.2	15.0
9 SEER Areas <sup>c</sup>	7.5	5.7	12.2	7.1	10.5	7.8	10.4
San Francisco-Oakland	6.6	5.0	10.9	6.4	8.6	6.3	10.0
Connecticut	6.6	4.5	12.1	6.2	11.6	-	14.5
Metropolitan Detroit	8.9	6.4	15.5	7.9	12.3	-	12.5
Hawaii	8.7	7.2	12.6	8.3	-	8.7	-
Iowa	7.7	6.4	11.1	7.7	-	-	-
New Mexico	8.3	6.6	12.8	8.4	-	-	8.4
Seattle-Puget Sound	7.0	5.9	9.8	6.7	8.6	10.0	-
Utah	6.3	5.2	9.0	6.2	-	-	11.2
Metropolitan Atlanta	8.3	5.5	15.7	7.4	10.5	12.6	14.5
San Jose-Monterey	7.2	5.5	11.6	7.4	-	7.1	12.7
Los Angeles	11.6	8.4	19.9	12.4	9.3	9.6	18.1
Rural Georgia	9.4	-	-	-	-	-	-
California exclud. SF/SJM/LA	8.5	6.7	13.1	8.6	7.3	8.6	13.0
Kentucky	10.5	8.5	15.8	10.0	15.0	-	-
Louisiana	10.1	8.2	15.1	8.4	14.4	-	-
New Jersey	9.6	7.1	16.3	9.0	14.6	6.0	15.0

<sup>a</sup> Rates are per 100,000 and are age-adjusted to the 2000 US Std Population (19 age groups - Census P25-1130)

<sup>b</sup> Hispanic is not mutually exclusive from Whites, Blacks, Asian/Pacific Islanders, and American Indians/Alaska Natives. Incidence data for Hispanics are based on NHIA and exclude cases from Hawaii, Seattle, Alaska Native Registry and Kentucky.

<sup>c</sup> The SEER 9 areas are San Francisco, Connecticut, Detroit, Hawaii, Iowa, New Mexico, Seattle, Utah and Atlanta.

The SEER 11 areas comprise the SEER 9 areas plus San Jose-Monterey and Los Angeles.

The SEER 13 areas comprise the SEER 11 areas plus the Alaska Native Registry and Rural Georgia.

The SEER 17 areas comprise the SEER 13 areas plus California excluding SF/SJM/LA, Kentucky, Louisiana and New Jersey

- Statistic not shown. Rate based on less than 16 cases for the time interval.

Table V-10  
CERVIX UTERI CANCER (Invasive)

AGE-ADJUSTED SEER DEATH RATES<sup>a</sup>  
By Registry, Race/Ethnicity and Age

	All Races			Whites	Blacks	Asian/Pacific Islanders	Hispanics <sup>b</sup>
	All Ages	Ages <50	Ages 50+	All Ages	All Ages	All Ages	All Ages
<u>SEER DEATH RATES<sup>a</sup>, 2000-2003</u>							
REGISTRY							
17 SEER Areas <sup>c</sup>	2.5	1.2	5.9	2.3	4.4	2.6	3.4
13 SEER Areas <sup>c</sup>	2.4	1.1	5.8	2.2	3.9	2.4	3.6
11 SEER Areas <sup>c</sup>	2.4	1.1	5.8	2.2	3.9	2.5	3.6
9 SEER Areas <sup>c</sup>	2.1	0.9	5.1	1.9	3.5	2.3	2.2
San Francisco-Oakland	1.8	0.8	4.3	1.6	3.8	1.7	-
Connecticut	1.8	0.7	4.8	1.7	2.9	-	-
Metropolitan Detroit	2.4	1.1	6.1	2.1	3.7	-	-
Hawaii	2.4	1.3	5.3	-	-	2.6	-
Iowa	2.5	1.3	5.5	2.4	-	-	-
New Mexico	2.3	1.0	5.6	2.1	-	-	2.1
Seattle-Puget Sound	1.8	0.8	4.6	1.6	-	3.8	-
Utah	1.8	1.0	3.7	1.8	-	-	-
Metropolitan Atlanta	2.4	0.9	6.2	1.9	3.1	-	-
San Jose-Monterey	1.6	0.8	3.8	1.5	-	2.1	1.8
Los Angeles	3.5	1.6	8.5	3.5	5.0	2.9	4.7
Rural Georgia	-	-	-	-	-	-	-
California exclud. SF/SJM/LA	2.4	1.2	5.6	2.4	3.1	3.0	3.3
Kentucky	3.1	1.6	6.8	2.9	6.2	-	-
Louisiana	2.9	1.7	6.1	1.9	5.5	-	-
New Jersey	2.7	1.3	6.4	2.5	5.4	2.1	2.8
Total U.S.	2.6	1.3	6.0	2.4	5.0	2.5	3.4

<sup>a</sup> NCHS public use data file for the total US. Rates are per 100,000 and are age-adjusted to the 2000 US Std Population (19 age groups - Census P25-1130).

<sup>b</sup> Hispanic is not mutually exclusive from Whites, Blacks, Asian/Pacific Islanders, and American Indians/Alaska Natives. The 2000-2003 Hispanic death rates do not include deaths from Minnesota, New Hampshire and North Dakota.

<sup>c</sup> The SEER 9 areas are San Francisco, Connecticut, Detroit, Hawaii, Iowa, New Mexico, Seattle, Utah and Atlanta.

The SEER 11 areas comprise the SEER 9 areas plus San Jose-Monterey and Los Angeles.

The SEER 13 areas comprise the SEER 11 areas plus the Alaska Native Registry and Rural Georgia.

The SEER 17 areas comprise the SEER 13 areas plus California excluding SF/SJM/LA, Kentucky, Louisiana and New Jersey

- Statistic not shown. Rate based on less than 16 cases for the time interval.

Table V-11  
CERVIX UTERI CANCER (Invasive)

AVERAGE ANNUAL AGE-ADJUSTED CANCER DEATH<sup>a</sup> RATES BY STATE, ALL RACES, 2000-2003

Females

State	Rate	SE	Rank	PD	State	Rate	SE	Rank	PD
TOTAL U.S.	2.6	0.02							
High Five States									
District of Columbia	3.9 <sup>b</sup>	0.56	(01)	50.0					
West Virginia	3.7 <sup>bc</sup>	0.30	(02)	42.3					
Arkansas	3.5 <sup>bc</sup>	0.25	(03)	34.6					
Mississippi	3.5 <sup>bc</sup>	0.24	(04)	34.6					
Texas	3.4 <sup>bc</sup>	0.09	(05)	30.8					
Low Five States									
Washington	1.8 <sup>bc</sup>	0.12	(47)	-30.8					
Wisconsin	1.8 <sup>bc</sup>	0.12	(48)	-30.8					
Utah	1.8 <sup>bc</sup>	0.22	(49)	-30.8					
Massachusetts	1.6 <sup>bc</sup>	0.11	(50)	-38.5					
Minnesota	1.5 <sup>bc</sup>	0.12	(51)	-42.3					
Alabama	3.3 <sup>bc</sup>	0.18	(07)	26.9	Montana	2.0 <sup>d</sup>	0.31	(42)	-23.1
Alaska	2.1 <sup>b</sup>	0.49	(40)	-19.2	Nebraska	2.1 <sup>b</sup>	0.24	(41)	-19.2
Arizona	2.6	0.16	(19)	0.0	Nevada	2.8	0.26	(16)	7.7
Arkansas	3.5 <sup>bc</sup>	0.25	(03)	34.6	New Hampshire	2.4	0.29	(31)	-7.7
California	2.6	0.06	(23)	0.0	New Jersey	2.7	0.12	(17)	3.8
Colorado	1.8 <sup>bc</sup>	0.15	(44)	-30.8	New Mexico	2.3	0.24	(36)	-11.5
Connecticut	1.8 <sup>bc</sup>	0.15	(46)	-30.8	New York	2.7	0.08	(18)	3.8
Delaware	3.1 <sup>b</sup>	0.42	(08)	19.2	North Carolina	2.6	0.12	(22)	0.0
District of Columbia	3.9 <sup>b</sup>	0.56	(01)	50.0	North Dakota	1.9 <sup>b</sup>	0.37	(43)	-26.9
Florida	3.0 <sup>bc</sup>	0.09	(12)	15.4	Ohio	2.6	0.10	(20)	0.0
Georgia	2.8	0.13	(15)	7.7	Oklahoma	2.9	0.20	(14)	11.5
Hawaii	2.4	0.30	(28)	-7.7	Oregon	2.3	0.18	(34)	-11.5
Idaho	2.3	0.30	(33)	-11.5	Pennsylvania	2.4	0.09	(27)	-7.7
Illinois	3.0 <sup>b</sup>	0.11	(11)	15.4	Rhode Island	2.1 <sup>b</sup>	0.30	(39)	-19.2
Indiana	2.6	0.14	(21)	0.0	South Carolina	3.0 <sup>b</sup>	0.18	(10)	15.4
Iowa	2.5	0.19	(25)	-3.8	South Dakota	2.2 <sup>b</sup>	0.38	(37)	-15.4
Kansas	2.4	0.20	(30)	-7.7	Tennessee	3.3 <sup>bc</sup>	0.16	(06)	26.9
Kentucky	3.1 <sup>b</sup>	0.19	(09)	19.2	Texas	3.4 <sup>bc</sup>	0.09	(05)	30.8
Louisiana	2.9	0.18	(13)	11.5	Utah	1.8 <sup>bc</sup>	0.22	(49)	-30.8
Maine	1.8 <sup>b</sup>	0.24	(45)	-30.8	Vermont	2.3	0.41	(32)	-11.5
Maryland	2.4	0.14	(29)	-7.7	Virginia	2.4	0.13	(26)	-7.7
Massachusetts	1.6 <sup>bc</sup>	0.11	(50)	-38.5	Washington	1.8 <sup>bc</sup>	0.12	(47)	-30.8
Michigan	2.2 <sup>bc</sup>	0.10	(38)	-15.4	West Virginia	3.7 <sup>bc</sup>	0.30	(02)	42.3
Minnesota	1.5 <sup>bc</sup>	0.12	(51)	-42.3	Wisconsin	1.8 <sup>bc</sup>	0.12	(48)	-30.8
Mississippi	3.5 <sup>bc</sup>	0.24	(04)	34.6	Wyoming	2.3	0.47	(35)	-11.5
Missouri	2.5	0.14	(24)	-3.8					

<sup>a</sup> NCHS public use data file. Rates are per 100,000 and are age-adjusted to the 2000 US Std Population (19 age groups - Census P25-1130).

<sup>b</sup> Absolute percent difference between state rate and total U.S. rate is 15% or more.

<sup>c</sup> Difference between state rate and total U.S. rate is statistically significant ( $p \leq .0002$ ).

SE Standard error of the rate.

PD Percent difference between state rate and total U.S. rate.

Table V-12  
CERVIX UTERI CANCER (Invasive)

Estimated United States Cancer Prevalence Counts<sup>a</sup> on January 1, 2003  
By Race/Ethnicity and Years Since Diagnosis

Years Since Diagnosis	0 to <5	5 to <10	10 to <15	15 to <20	20 to <25	0 to <13 <sup>e</sup>	0 to <28 <sup>e</sup>	>=28 <sup>g</sup>	Complete <sup>h</sup>
<u>Race</u>									
All Races <sup>b</sup>	43,374	39,886	35,352	27,575	23,494	104,742	183,935	69,846	253,781
White <sup>b</sup>	34,102	31,874	29,343	22,930	19,214	83,766	149,163	58,118	207,281
Black <sup>b</sup>	6,519	5,160	4,102	3,370	3,258	14,208	24,512	+	+
Asian/Pacific Islander <sup>c</sup>	1,969	1,732	+	+	+	4,466	+	+	+
Hispanic <sup>d</sup>	8,038	6,101	+	+	+	17,529	+	+	+

Estimated prevalence percent<sup>a</sup> on January 1, 2003, of the SEER 11 population diagnosed in the previous 10 years  
By Age at Prevalence and Race/Ethnicity

Age at Prevalence	All Ages	Age Specific (Crude)									Age-Adjusted <sup>f</sup>	
		0-9	10-19	20-29	30-39	40-49	50-59	60-69	70-79	80+	All Ages	
<u>Race</u>												
All Races <sup>c</sup>	0.0611%	-	-	0.0103%	0.0767%	0.1223%	0.1166%	0.1094%	0.0937%	0.0606%	0.0605%	
White <sup>c</sup>	0.0611%	-	-	0.0114%	0.0855%	0.1274%	0.1121%	0.0963%	0.0806%	0.0460%	0.0601%	
Black <sup>c</sup>	0.0576%	-	-	0.0093%	0.0637%	0.1080%	0.1184%	0.1416%	0.1358%	0.1607%	0.0646%	
Asian/Pacific Islander <sup>c</sup>	0.0608%	-	-	0.0034%	0.0337%	0.0962%	0.1362%	0.1614%	0.1498%	0.1176%	0.0601%	
Hispanic <sup>d</sup>	0.0758%	-	-	0.0115%	0.0906%	0.2025%	0.2212%	0.2069%	0.2338%	0.1217%	0.1046%	

- <sup>a</sup> US 2003 cancer prevalence counts are based on 2003 cancer prevalence proportions from the SEER registries and 1/1/2003 US population estimates based on the average of 2002 and 2003 population estimates from the US Bureau of the Census. Prevalence was calculated using the First Malignant Primary Only for a person.
- <sup>b c d</sup> Statistics based on (b) SEER 9 Areas (c) SEER 11 Areas and Rural Georgia (d) NHIA for Hispanic for SEER 11 Areas and Rural Georgia excluding Hawaii and Seattle.
- <sup>e</sup> Maximum limited-duration prevalence: 28 years for 1975-2003 SEER 9 data; 13 years for 1990-2003 SEER 11 data (used to calculate prevalence for Hispanics and Asian Pacific Islanders).
- <sup>f</sup> Percentages are age-adjusted to the 2000 US standard population by 5-year age groups.
- <sup>g h i</sup> (g) Cases diagnosed more than 28 years ago were estimated using the completeness index method (Capocaccia et. al. 1997, Merrill et. al. 2000). (h) Complete prevalence is obtained by summing 0 to <28 and >=28. (i) Age-specific completeness index was approximated using empirical data from historical Connecticut tumor registry.
- Statistic not shown. Statistic based on fewer than 5 cases estimated alive in SEER for the time interval.
- + Not available.

# SEER Incidence, Delay Adjusted Incidence and US Death Rates+ Cervix Uteri Cancer, by Race

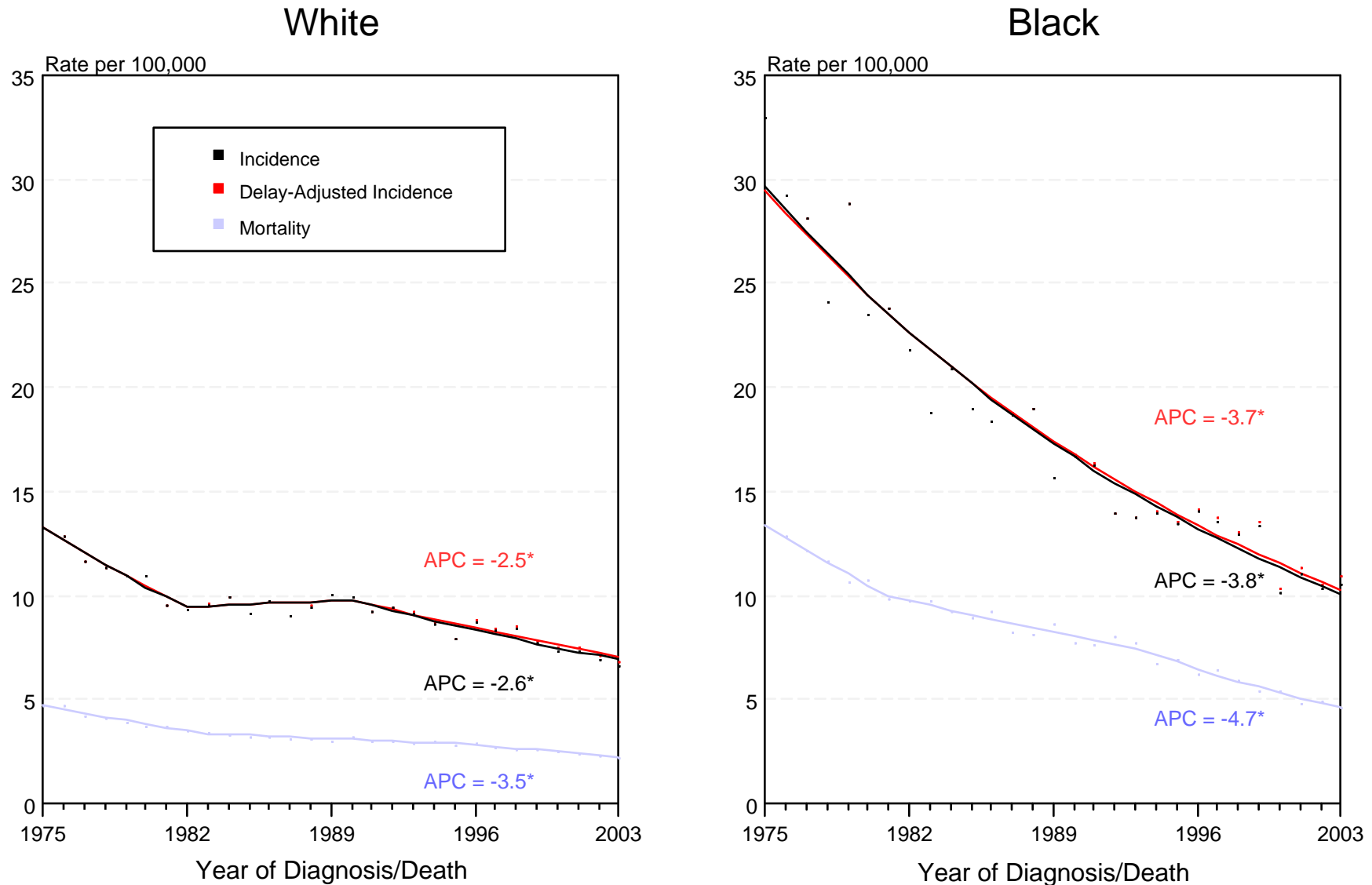


Figure V-1

+ Source: SEER 9 areas and NCHS public use data file for the total US. Rates are age-adjusted to the 2000 US Std Population (19 age groups - Census P25-1103). Regression lines and APCs are calculated using the Joinpoint Regression Program Version 3.1, April 2006, National Cancer Institute.

The APC is the Annual Percent Change for the regression line segments. The APC shown on the graph is for the most recent trend.

\* The APC is significantly different from zero ( $p < 0.05$ ).

# SEER Incidence, Delay Adjusted Incidence and US Death Rates+ Cervix Uteri Cancer, by Age and Race

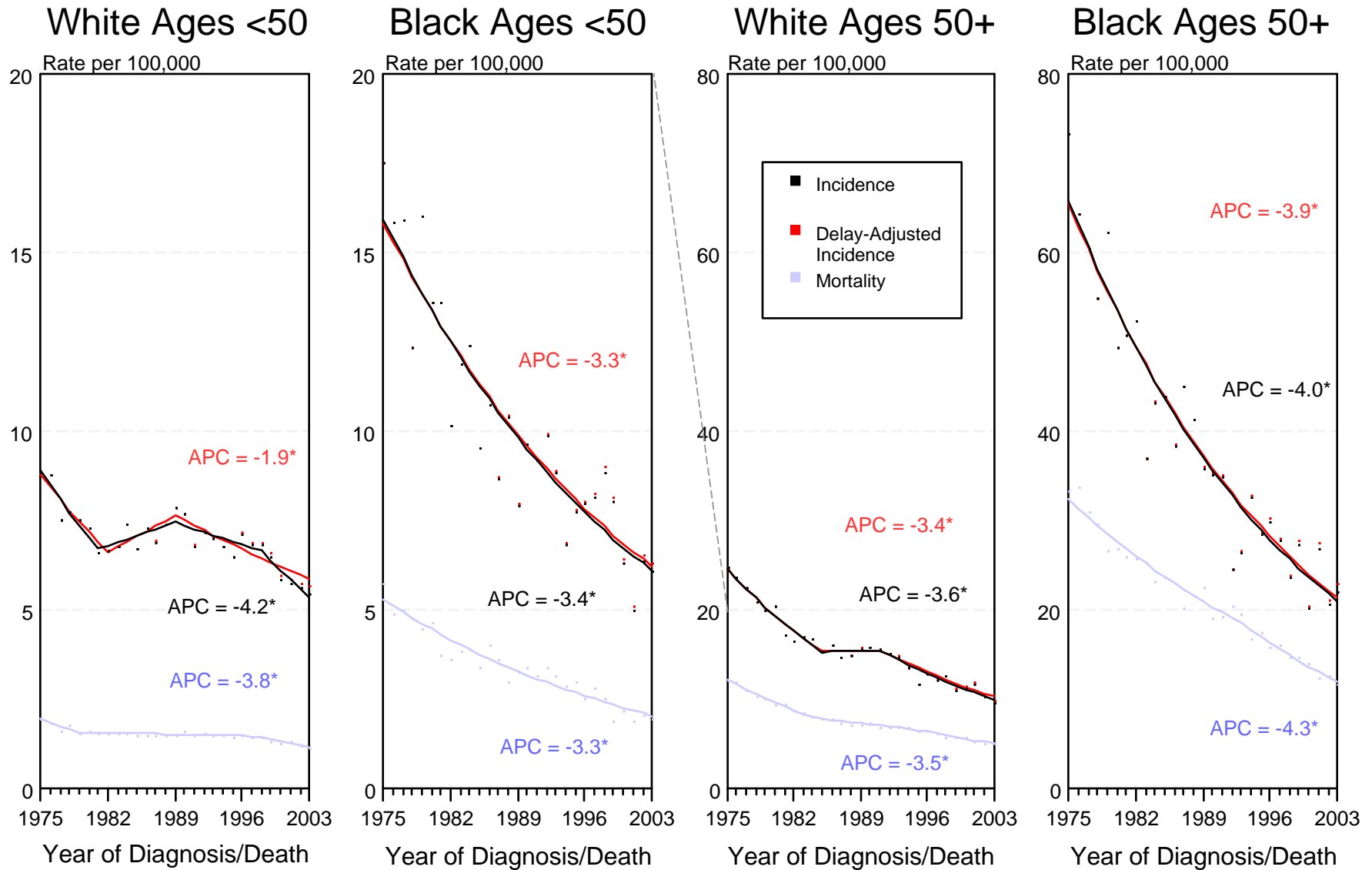


Figure V-2

+ Source: SEER 9 areas and NCHS public use data file for the total US. Rates are age-adjusted to the 2000 US Std Population (19 age groups - Census P25-1103). Regression lines and APCs are calculated using the Joinpoint Regression Program Version 3.1, April 2006, National Cancer Institute.

The APC is the Annual Percent Change for the regression line segments. The APC shown on the graph is for the most recent trend.

\* The APC is significantly different from zero ( $p < 0.05$ ).

# SEER Incidence and US Death Rates\* Cervix Uteri Cancer

Joinpoint Analyses for Whites and Blacks from 1975-2003  
and for Asian/Pacific Islanders, American Indians/Alaska Natives and Hispanics from 1992-2003

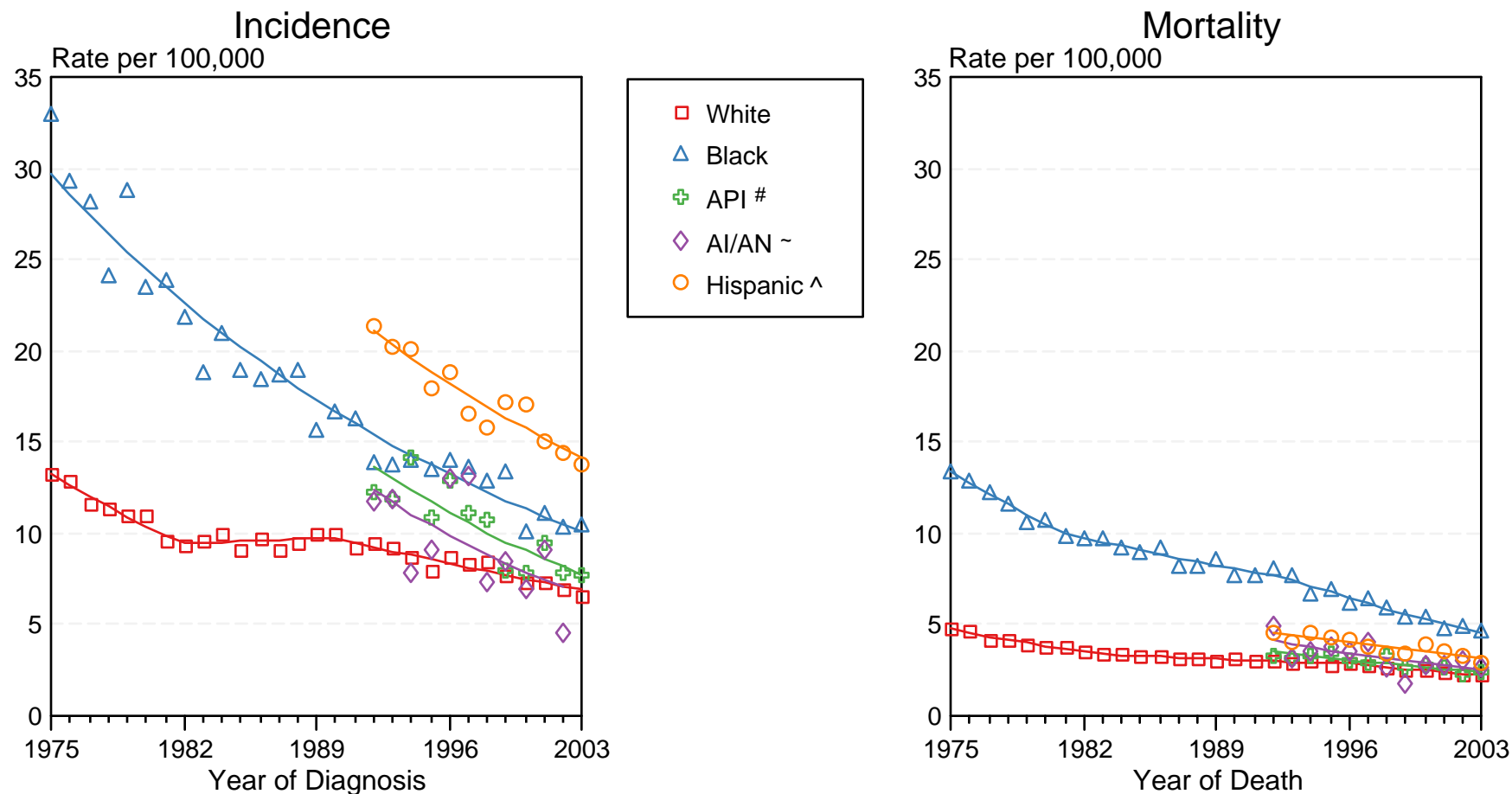


Figure V-3

Source: Incidence data for Whites and Blacks are from the SEER 9 areas (San Francisco, Connecticut, Detroit, Hawaii, Iowa, New Mexico, Seattle, Utah, Atlanta). Incidence data for Asian/Pacific Islanders and Hispanics are from the SEER 13 Areas (SEER 9 Areas, San Jose-Monterey, Los Angeles, Alaska Native Registry and Rural Georgia). Mortality data are from NCHS public use data file for the total US.

\* Rates are age-adjusted to the 2000 US Std Population (19 age groups - Census P25-1103).

Regression lines are calculated using the Joinpoint Regression Program Version 3.1, April 2006, National Cancer Institute.

# API = Asian/Pacific Islander.

~ AI/AN = American Indian/Alaska Native. Incidence data for AI/AN include cases from Connecticut, Detroit, Iowa, New Mexico, Seattle, Utah, Atlanta and the Alaska Native Registry for the time period 1992-2002. Mortality data are from the entire US for the time period 1992-2003.

^ Hispanic is not mutually exclusive from Whites, Blacks, Asian/Pacific Islanders, and American Indians/Alaska Natives. Incidence data for Hispanics are based on NHIA and exclude cases from Hawaii, Seattle, and the Alaska Native Registry. Mortality data for Hispanics exclude cases from Connecticut, Maine, Maryland, Minnesota, New Hampshire, New York, North Dakota, Oklahoma, and Vermont.