

Summer 2002

New Ground

News of the Gifford Pinchot National Forest

Gifford Pinchot
National Forest

Forest Employees and Partners Receive National Awards For Fisheries Management

Employees of the Gifford Pinchot and Mt. Hood National Forests, along with a number of local community partners, received national [recognition](#) for their efforts in [Fisheries Management](#) at a conference this spring in Washington, D.C. Realizing that the number of wild steelhead returning to the Wind River had dropped to perilously low levels, and that watershed conditions needed to be improved, agency members and local partners worked together to restore fish habitat.

Members of the Wind River Restoration Team, and Mt. Adams District Ranger Greg Cox were all honored for their outstanding efforts to protect and enhance fish habitat along the Wind River. Partners with the Gifford Pinchot National Forest in this effort were: The [Bonneville Power Administration](#), Portland Public Schools/[Wolf Tree](#), Underwood Conversation District, [US Fish and Wildlife Service](#), [US Geological Survey-Columbia River Research Lab](#), [Washington Dept. of Fish and Wildlife](#), Wind River Watershed Council, and Yakama Nation.

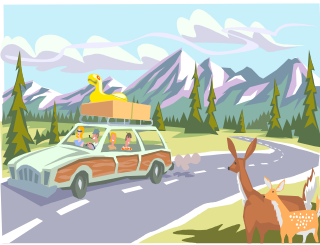
Workshops, Seminar Present Yacolt Burn History, and Home Safety Information



“As Dark As Night,” read the headlines of the Seattle Times, on September 12, 1902. This described the sky in the city of Tacoma, Wash. that fall as one of the biggest forest fires in the history of the state of Washington raced across the landscape of Southwest Washington. Over the next year a number of events are planned to provide information and education about this event. Several adult education seminars will be offered in Southwest Washington starting in September. The seminars will be held on Thursday,

September 5 at the Fire District 3 fire station in Hockinson, Wash. starting at 7 p.m., Yacolt Elementary School in Yacolt, Wash. on Thursday, September 26 from 7 p.m. –9 p.m., and on Sunday, September 29 at the Columbia Gorge Interpretive Center in Stevenson, Wash. starting at 3 p.m. Come learn more about the Yacolt Burn and [protecting your home from fire](#). Other planned events are an evening seminar at WSU-Vancouver on Thursday October 3 from 6:30 p.m. – 8:30 p.m., teacher workshops targeting elementary and middle schools, a newspaper informational insert, a self-guided driving tour, and a larger exhibit at the Columbia Gorge Interpretive Center in the spring of 2003.

Results of Forest Roads Analysis Presented at Meetings



The Gifford Pinchot National Forest recently held a series of meetings explaining the results of the Gifford Pinchot National Forest roads analysis process. This analysis helps identify an affordable roads system that meets public and resource needs, and reduces adverse environmental effects. The meetings were held to explain the results of the Roads Analysis process, which started last winter. This analysis will not result in any immediate closure or decommissioning of Forest roads. For more

Information, visit the [Roads Analysis](#) section on the Forest web site.

“Pick Up the Pinchot” for National Public Lands Day

This year’s event will be held on Saturday, September 28, 2002. This 4th annual event encourages volunteers to help improve their national forest. “Pick Up the Pinchot” will offer volunteers the opportunity to help cleanup their national forest. The Cowlitz Valley Ranger District will host a litter pick up, Mount St. Helens NVM is sponsoring a clean up at Sunset Campground area, and the Mt. Adams Ranger District will host a Tread Lightly workshop in Stevenson, Wash. Contact: Dave Olson, FH, 360-891-5210; Tom Linde, MARD, (509) 427-3200; Hans Castren at MSH (360) 449-7800; or Steve Hoecker CVRD, (360) 497-1100.



Forest Road 23 will be closed north of the junction with Forest Road 90 from September 9 through September 22, for replacement of a culvert, at milepost 33, between Randle and Trout Lake, Wash.

How to reach us:

**Gifford Pinchot National Forest
Forest Headquarters**
10600 NE 51st Circle
Vancouver, WA 98682
24-hr. recording (360) 891-5009
(360) 891-5001
FAX: (360) 891-5045
TTY: (360) 891-5003

Cowlitz Valley Ranger District
10024 U.S. Hwy 12
P.O. Box 670
Randle, WA 98377
(360) 497-1100
FAX: (360) 497-1102
TTY: (360) 497-1101

**Packwood Work and
Information Center**
13068 U.S. Hwy 12
Packwood, WA 98361
(360) 494-1172
FAX: (360) 497-1102
TTY: (360) 497-1101

Mt. Adams Ranger District
2455 Highway 141
Trout Lake, WA 98650
(509) 395-3400
FAX: (509) 395-3424
TTY: (509) 395-3422

**Wind River Work and
Information Center**
1262 Hemlock Road
Carson, WA 98610
(509) 427-3200
FAX: (509) 427-3215
TTY: (509) 427-4541

**Mount St. Helens National
Volcanic Monument**
42218 NE Yale Bridge Road
Amboy, WA 98601
(360) 449-7800
FAX: (360) 449-7801
TTY: (360) 449-7802

**Mount St. Helens
Visitor Center: Silver Lake**
3029 Spirit Lake Highway
Castle Rock, WA 98611
24-hr. recording (360) 274-2103
(360) 274-2100
FAX: (360) 274-2101
TTY: (360) 274-2102

Coldwater Ridge Visitor Center
Located at MP 43
(360) 274-2114
FAX: (360) 274-2129
TTY: (360) 274-2102

Johnston Ridge Observatory
Located at MP 52
(360) 274-2140

Internet:

www.fs.fed.us/gpnf/

Your Recreation Fees Are Making A Difference



On the Gifford Pinchot National Forest, money collected from the Recreation Fee Demonstration Program funded a wide range of visitor services during the past year. One of the key elements of this program is making sure that the funds collected pay for improvements where they were collected. Projects accomplished with the [Northwest Forest Pass](#)

and Cascade Volcano Pass fees are listed in the enclosed [report](#).

People Asked To Camp In Designated Sites in Indian Heaven

Gifford Pinchot Forest managers are asking visitors to help reduce impacts to the Indian Heaven Wilderness by camping in designated campsites. The lakeshore areas around Thomas Lake and Blue Lake are very popular, especially in the late summer and fall. In order to address these increasing physical impacts within Wilderness, the Forest Service is asking people to camp only in designated sites in the vicinity of Thomas and Blue Lake. For more information, call the Mt. Adams Ranger District or visit the Gifford Pinchot web site.

Government Mineral Springs Cabin Re-dedication

The [Government Mineral Springs Guard Station](#), a newly restored Forest Guard cabin built in 1937 by the Civilian Conservation Corps and nestled in a grove of towering old-growth firs, will be re-dedicated at 1 p.m. on Sunday, September 29. The cabin has two bedrooms, a kitchen, and living room with fireplace. It is ideally located near Trapper Creek Wilderness trailheads and close to Sno-Parks for winter recreation access. Re-dedication of the Guard Station will take place this fall. Contact: Rick McClure, MARD, (509) 395-3399. To reserve a night call (509) 427-3200.

Summer Activities on Your National Forest

Mount St. Helens Summer seminar series. The Mount St. Helens Institute is sponsoring a series of [field seminars](#) between now and September 14. Participants will explore the wonders of Northwest volcanic landscapes guided by specialists in geology, biology, or the arts. Catalog and registration information is available online at the [Mount St. Helens Institute web site](#) or send your name and mailing address to: mshi@teleport.com, or fax (360) 891-5045, or contact: Sue Ripp, Partnership Coordinator (360) 891-5207, or kday_mshi@hotmail.com

Huckleberry Hotspots. Huckleberry season is here. If you would like to know the latest information on where to find those elusive huckleberries, visit the [Huckleberry Hotspot](#) page on the Forest web site for the latest information on where to find these ripe and juicy treats.

Fire Information: Gifford Pinchot employees are lending their support to the fire fighting effort. Currently more than 80 employees are assisting with fires in Oregon and Washington. If you would like to keep abreast of current fire activity in the Pacific Northwest visit: www.or.blm.gov/nwcc/

Return Address:

Gifford Pinchot National Forest
10600 NE 51st Circle
Vancouver, WA 98682