

The following White Papers and Technical Papers provide additional detail about defining dispatch locations for an owning team.

- [Understanding Dispatch Logic in the Initial Response Simulation \(IRS\) Module](#)

Before Managing Dispatch Locations

FPU's need the following information to manage dispatch locations:

- FPU/FMU/FWAs information already available in the system,
- Existing or potential dispatch location name,
- Latitude and longitude of existing or potential dispatch location,
- Unit ID for the FPU agency which owns the dispatch location, and
- Callback Delay time (in minutes) for the dispatch location.

In This Chapter

This chapter discusses:

- [Managing Dispatch Locations](#)
 - [Adding a Dispatch Location](#)
 - [Removing a Dispatch Location](#)
- [Viewing Dispatch Locations for Resources Borrowed From Other Teams](#)

FPA Users Guide

Managing Dispatch Locations

Dispatch Locations are physical locations that house resources such as equipment and crews. Like resources, FPU teams own and manage dispatch locations.

The FPA system uses the concept of a “library” for Dispatch Locations. The library is nationwide in scope and contains all the dispatch locations entered by the FPUs in the previous version of FPA, and national dispatch locations for national resources (airtankers, type 1 and 2 helicopters, smokejumper bases and hotshot crew bases). All national Dispatch Locations are identified with a unit identifier (Unit ID) that begins with “NA_.” International dispatch locations are identified with a Unit ID that begins with “IN_.” The nationwide dispatch location library is available to all FPUs, allowing an FPU to borrow a resource from another FPU from the dispatch location where the resource is assigned by its owner.

Each FPU team’s database automatically populates with the dispatch locations imported from the previous FPA system. Revisions and additions the FPU team makes to dispatch locations will apply to all analyses for that FPU team. Only Dispatch Locations owned by the FPU (as indicated by the Unit ID field) may be edited, copied, added, or deleted. When borrowing a resource from another FPU, you cannot edit the Dispatch Location assignment of the resource.

Use this page to create and modify Dispatch Locations.

Managing Dispatch Locations


Adding a Dispatch Location

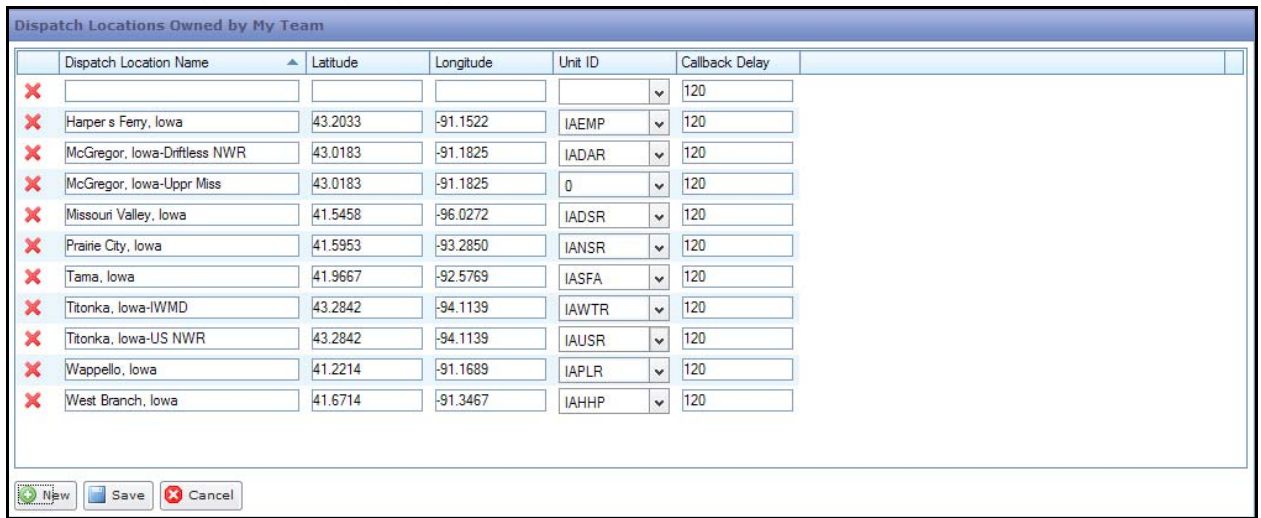
1. Click **Input Data > Define Dispatch Locations.**

Displays the Dispatch Locations Owned by My Team table.

2. Click .

Displays the Dispatch Locations Owned by My Team edit dialog box.

3. Click  to add a new Dispatch Location.



	Dispatch Location Name	Latitude	Longitude	Unit ID	Callback Delay
X					120
X	Harper s Ferry, Iowa	43.2033	-91.1522	IAEMP	120
X	McGregor, Iowa-Driftless NWR	43.0183	-91.1825	IADAR	120
X	McGregor, Iowa-Uppr Miss	43.0183	-91.1825	0	120
X	Missouri Valley, Iowa	41.5458	-96.0272	IADSR	120
X	Prairie City, Iowa	41.5953	-93.2850	IANSR	120
X	Tama, Iowa	41.9667	-92.5769	IASFA	120
X	Titonka, Iowa-IWMD	43.2842	-94.1139	IAWTR	120
X	Titonka, Iowa-US NWR	43.2842	-94.1139	IAUSR	120
X	Wappello, Iowa	41.2214	-91.1689	IAPLR	120
X	West Branch, Iowa	41.6714	-91.3467	IAHHP	120

A new line displays at the top of the page.

4. Enter new information as required.

5. Click  to save the new Dispatch Location and update the database.

Users return to the Dispatch Locations Owned by My Team table.

Click  to return to the Dispatch Locations Owned by My Team table. No database updates occur.

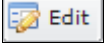
Column Title Definitions:

- **Name:** The common name used for the dispatch location. The name may not exceed 30 alphanumeric characters.
- **Latitude:** The latitude of the dispatch location entered in NAD 83 decimal degree format. The system accepts latitude to the sixth decimal place.
- **Longitude:** The longitude of the dispatch location entered in NAD 83 decimal degree format. The system accepts longitude to the sixth decimal place.
- **Unit ID:** The Unit ID drop-down list for the agency unit that owns the dispatch location. Initially only dispatch locations owned by the FPU team display in the drop-down list.
- **Callback Delay:** Enter in minutes the time it takes resources to be staffed during non-duty hours. This setting applies to all resources at the dispatch location regardless of agency ownership.

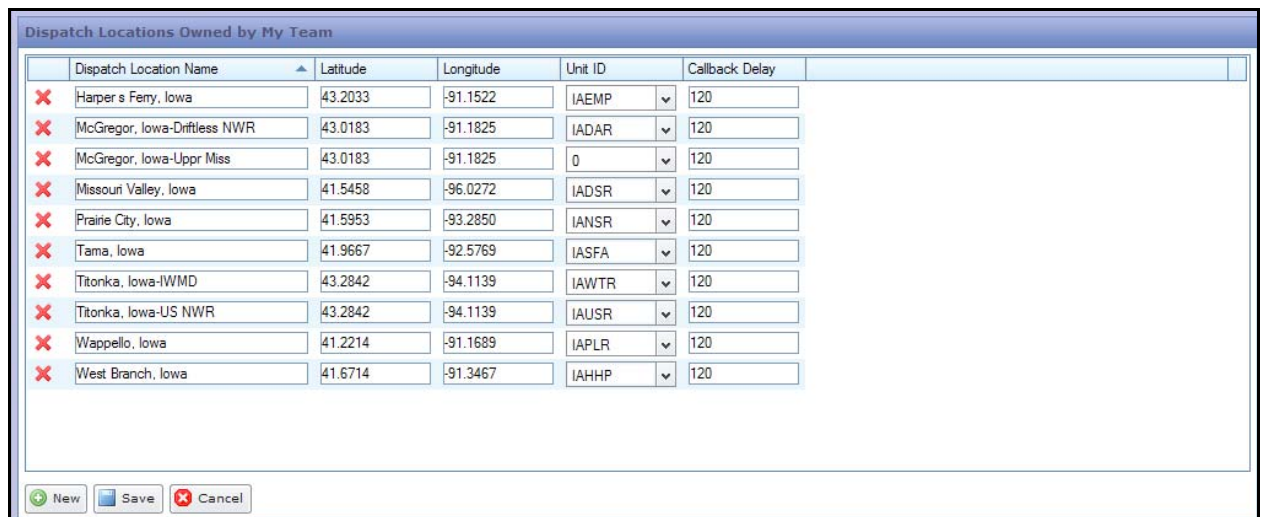
Editing a Dispatch Location

1. Click **Input Data > Define Dispatch Locations.**

Displays the Dispatch Locations Owned by My Team table.

2. Click .


Displays the Dispatch Locations Owned by My Team edit dialog box.



	Dispatch Location Name	Latitude	Longitude	Unit ID	Callback Delay
X	Harper s Ferry, Iowa	43.2033	-91.1522	IAEMP	120
X	McGregor, Iowa-Driftless NWR	43.0183	-91.1825	IADAR	120
X	McGregor, Iowa-Uppr Miss	43.0183	-91.1825	0	120
X	Missouri Valley, Iowa	41.5458	-96.0272	IADSR	120
X	Prairie City, Iowa	41.5953	-93.2850	IANSR	120
X	Tama, Iowa	41.9667	-92.5769	IASFA	120
X	Titonka, Iowa-IWMD	43.2842	-94.1139	IAWTR	120
X	Titonka, Iowa-US NWR	43.2842	-94.1139	IAUSR	120
X	Wappello, Iowa	41.2214	-91.1689	IAPLR	120
X	West Branch, Iowa	41.6714	-91.3467	IAHHP	120

FPA Users Guide

Managing Dispatch Locations

3. Enter new information as required.
4. Click  to save edit(s) and update the nationwide library.

The updated information displays in the Dispatch Locations Available to My Team table.

Users return to the Dispatch Locations Available to My Team table.

Click  to return to the Dispatch Locations Owned by My Team table. No database updates occur.

Removing a Dispatch Location

Consideration

- This action removes a previously associated dispatch location from your FPU teams' list of dispatch locations. Recognize that this is a removal, **not a deletion**. The system prevents users from deleting dispatch locations from the dispatch location nationwide library because other FPUs may rely on that dispatch location for their own resources and it is very unusual for a dispatch location to be abandoned. When this occurs, the owning FPU team should notify the FPA office to have the dispatch location permanently removed from the system.

1. Click **Input Data > Define Dispatch Locations**.

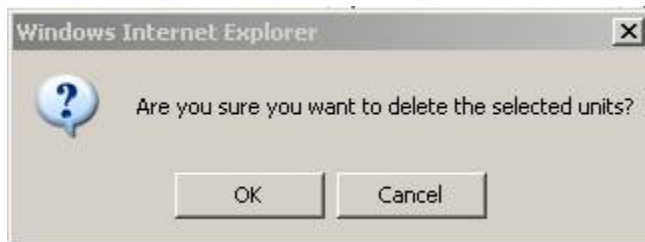
Displays the Dispatch Locations Owned by My Team table.

2. Click .

Displays the Dispatch Locations Owned by My Team edit dialog box.

3. Click to highlight the appropriate Dispatch Location row.
4. Click .

Displays the delete confirmation dialog box.



5. Click  to remove the Dispatch Location and update the database.

Users return to the Dispatch Locations Available to My Team table.

Click  to return to the Dispatch Locations Available to My Team table. No Dispatch locations are removed.

Viewing Dispatch Locations for Resources Borrowed From Other Teams

Dispatch Locations for borrowed Other Team's Resources table.



Owning Team	Name	Latitude	Longitude	Unit ID	Callback Delay
GB_UT_002	Mt. View	41.7275	-111.8544	UTDIF	120

This table initially is empty. As FPU's borrow resources using the **Input Data > Define Resources > Available Resources Owned by Other Teams** table, the Dispatch Locations for borrowed Other Team's Resources is populated. This table is read-only and provided for your reference.