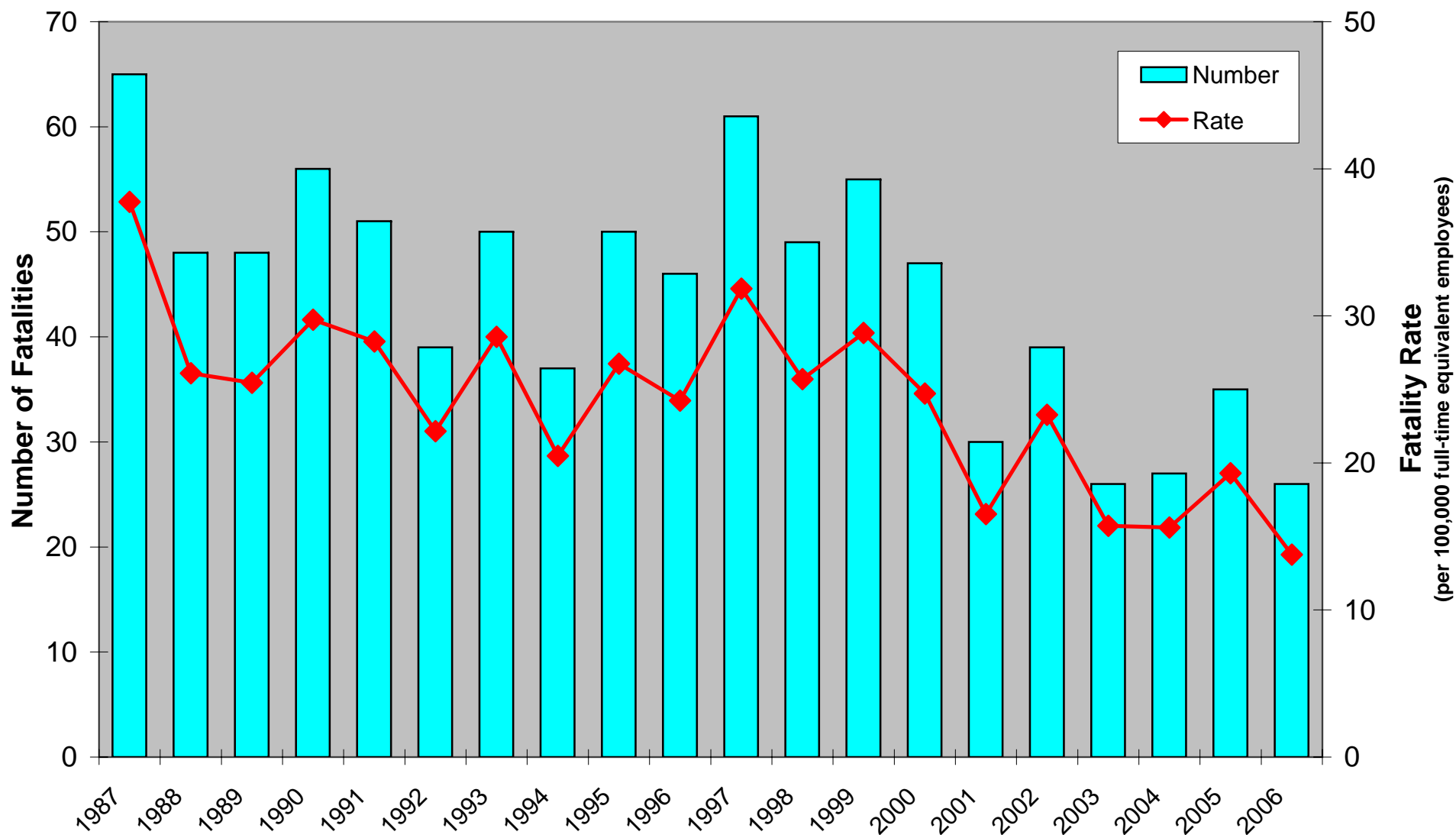


Number and Rate of Occupational Metal/Nonmetal Mining Fatalities by Year, 1987-2006



Data source: MSHA

NOTES: (1) Excludes office employees. (2) Analyses of occupational fatalities exclude all individuals under 17 years of age. (3) Prior to the 2006 data, fatalities of individuals who were not classified as employees of either a mine operator or independent contractor were excluded. Beginning with the 2006 data, such fatality cases were examined to determine their inclusion as occupational fatalities. (4) Full-time equivalent (FTE) employees were computed using reported employee hours (2,000 hr = 1 FTE). (5) "Metal/Nonmetal" includes metal, nonmetal, stone, and sand and gravel.