

Significant Pest Bulletin

Red Palm Mite

Pest of Significance

Raoiella indica – Red Palm Mite



Figure 1- Adult Mite (This pest is macroscopic)

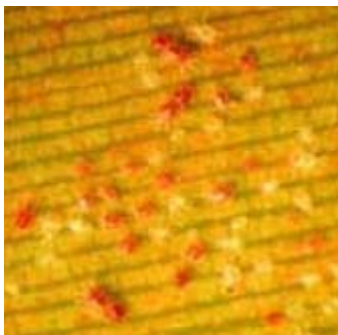


Figure 2 – Mass infestation of Red Palm Mite



Figure 3 – Mass infestation on a palm

Distribution

The Red Palm Mite has been confirmed in several of the Caribbean islands. It also occurs in India, Pakistan, Sri Lanka, Israel, Egypt, Iran, Sudan, and the Philippines.



Affected Commodities

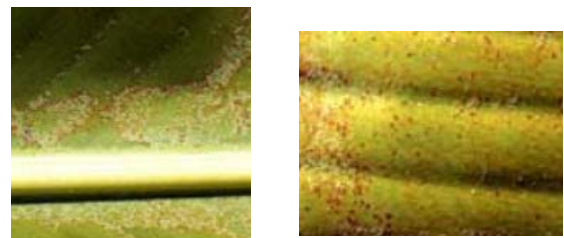
Primarily species of *Arecaceae* are host to this pest with the addition of *Musa sp.* (*Musaceae*). The products most likely to be affected entering through a port of entry will be:

- Woven Palm Hats
- Woven Palm Tote Bags
- Loose Palm leaves
- Other products made of green palm leaves



Figures 5,6,and 7 – Examples of woven palm frond products

Commodity Damage



Figures 8 and 9 – Example of damage found on a frond

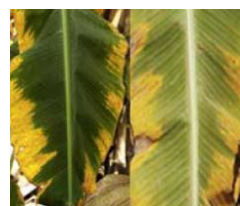


Figure 10 – Example of damage to a banana leaf

Port Inspections

The Red Palm Mite could be an economic threat to the ornamental palm industry as well as banana, coconut, and date production. Agriculture Specialists in all Ports of Entry should take extra precautions when inspecting air and sea passengers arriving from any Caribbean island. If an Agriculture Specialist finds a woven palm product that appears to have the above symptoms thoroughly inspect the goods for the Red Palm Mite. If an Agriculture Specialist has a concern over a fresh palm frond product, contact the first line Port Supervisor.