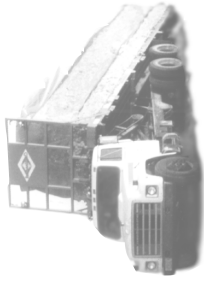


Your cotton industry, common sense, and State law make it important to keep weevils out of the **BLUE** areas shown on the map on this card.

Call your State plant protection official (below) for an inspection for boll weevils if you intend to move **used cotton equipment**:

ment:

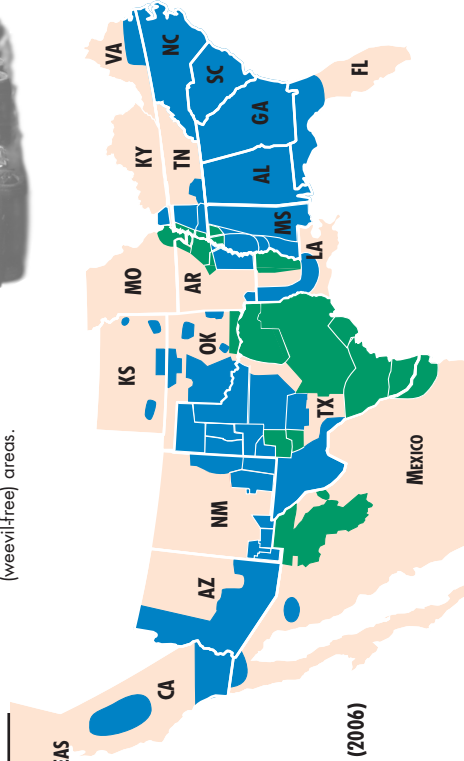
From or through the **GREEN** (eradication) areas into the **BLUE** (weevil-free) areas.



BOLL WEEVIL PROGRAM AREAS

 COMPLETED

 ERADICATION (2006)



STATE PLANT PROTECTION OFFICIALS (COTTON STATES)

ALABAMA

Dept. of Agriculture and Industries
(334) 240-7225

KANSAS

Dept. of Agriculture
(785) 862-2180

ARIZONA

Dept. of Agriculture
(602) 542-0996

LOUISIANA

Dept. of Agriculture and Forestry
(225) 925-3770

ARKANSAS

State Plant Board
(501) 225-1598

KENTUCKY

Dept. of Agriculture
(859) 257-5838

CALIFORNIA

Dept. of Food and Agriculture
(916) 654-1022

MISSISSIPPI

Dept. of Agriculture
(662) 325-3390

FLORIDA

Dept. of Agriculture and Consumer Services
(352) 372-3505

MISSOURI

Dept. of Agriculture
(573) 751-5505

GEORGIA

Dept. of Agriculture
(404) 651-9486

NEW MEXICO

Dept. of Agriculture
(505) 646-3207

NORTH CAROLINA

Dept. of Agriculture
(919) 733-6930

OKLAHOMA

Dept. of Agriculture
(405) 521-3864

SOUTH CAROLINA

Dept. of Plant Industry
(864) 646-2130

TENNESSEE

Dept. of Agriculture
(615) 837-5338

TEXAS

Dept. of Agriculture
(512) 463-1145

VIRGINIA

Dept. of Agriculture and Consumer Services
(804) 786-3515

MOVING THE FOLLOWING IS REGULATED BY STATE LAW:

- used cotton equipment;
- the boll weevil, *Anthonomus grandis* Boheman, in any living form;
- cotton plants or plant parts;
- seed cotton; and
- gin trash.

Call your State office (numbers inside)
before you move any of these items.



United States Department of Agriculture
Animal and Plant Health Inspection Service
Issued September 1996
Slightly revised July 2006

The U.S. Department of Agriculture (USDA) prohibits discrimination in all its programs and activities on the basis of race, color, national origin, age, disability, and where applicable, sex, marital status, familial status, parental status, religion, sexual orientation, genetic information, political beliefs, reprisal, or because all or part of an individual's income is derived from any public assistance program. (Not all prohibited bases apply to all programs.) Persons with disabilities who require alternative means for communication of program information (Braille, large print, audiotape, etc.) should contact USDA's TARGET Center at (202) 720-2600 (voice and TDD). To file a complaint of discrimination, write to USDA, Director, Office of Civil Rights, 1400 Independence Avenue, S.W., Washington, D.C. 20250-9410, or call (800) 795-3272 (voice) or (202) 720-6382 (TDD). USDA is an equal opportunity provider and employer.

DELIVER US FROM WEEVIL



**Don't Move
Boll Weevils
Back Into
Eradicated
Areas**