



2008 National CSFP Association Conference

USDA Food and Nutrition Service
Commodity Supplemental Food Program (CSFP)
General Session Update

Date: February 11, 2008

Location: New Orleans, Louisiana



Agenda

Program Overview,
Farm Bill & Policy

Dana Rasmussen

Commodity Initiatives

Sheldon Gordon

Program Resources &
Caseload

Laura Castro

Commodity Outlook &
Food Ordering

Peggy Cantfil



Program Overview, Farm Bill & Policy

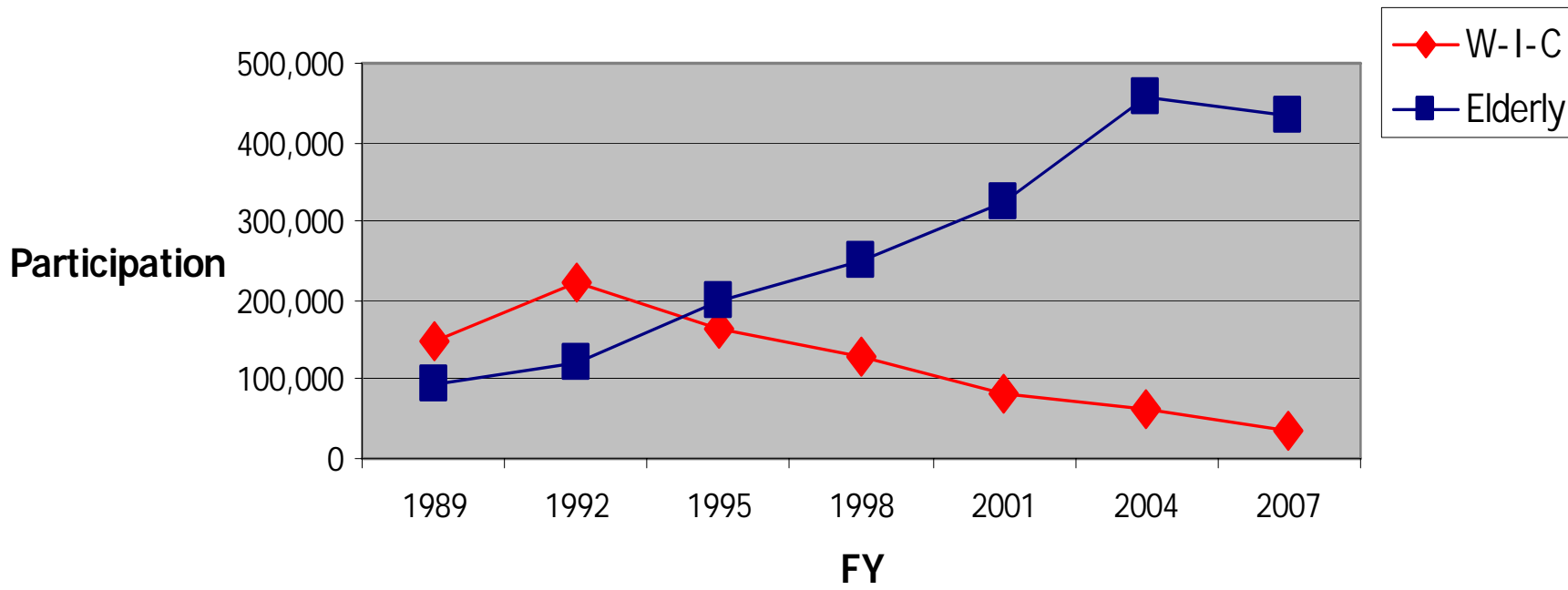
Dana Rasmussen
Program Analyst
Policy Branch
Food Distribution Division

Program Overview



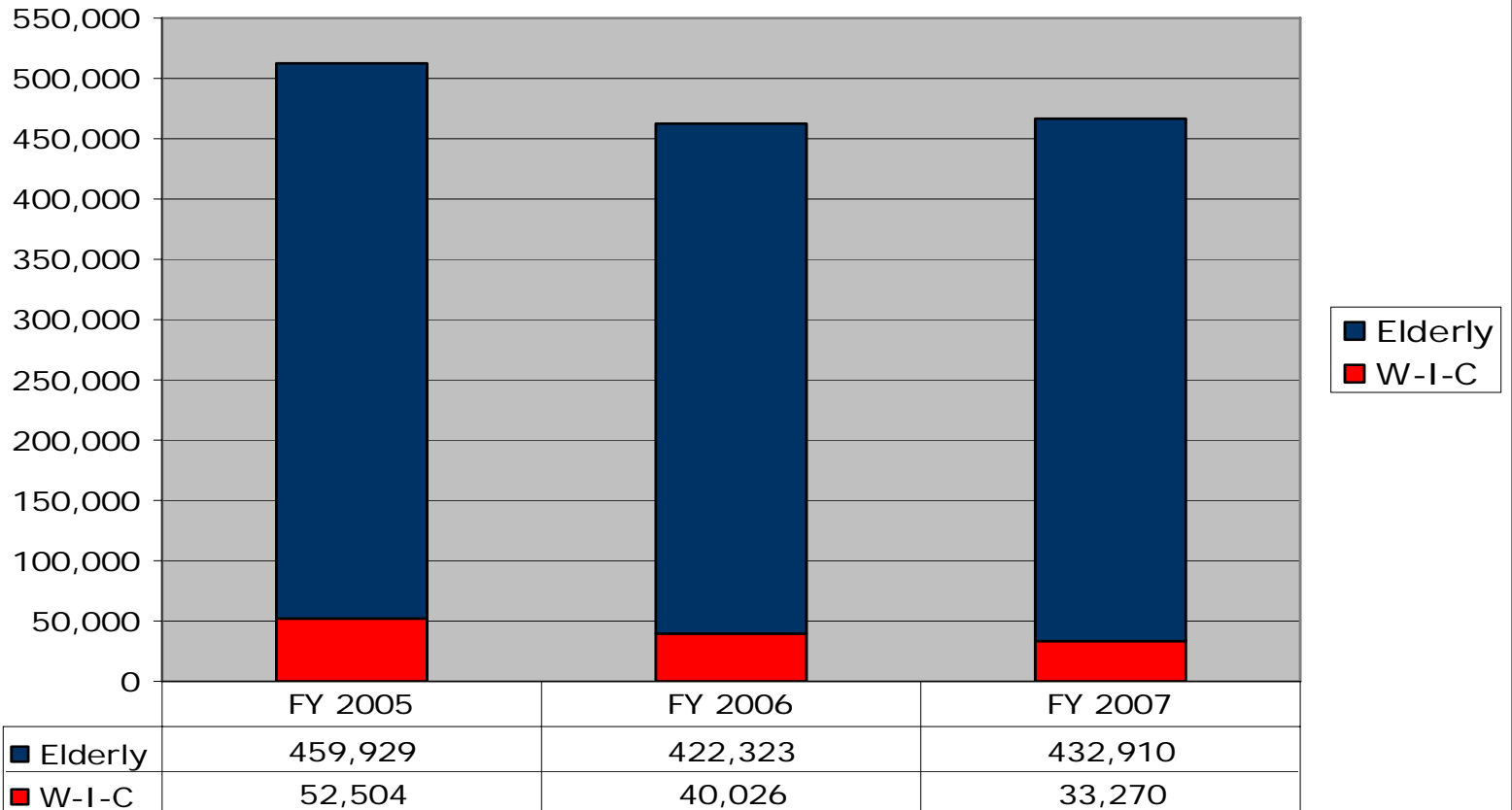
Program Overview

CSFP Average Monthly Participation
Women-Infants-Children (W-I-C) vs. Elderly
Fiscal Year (FY) 1989 - FY 2007



Program Overview

**CSFP Average Monthly Participation
FY 2005 - FY 2007**





Farm Bill

- Both House and Senate have passed their versions of the Farm Bill
- Currently in conference
- Both House and Senate versions would reauthorize the program



Farm Bill - Priority Groups

Current law gives CSFP priority to women, infants, and children (w-i-c).

House

Eliminates the current w-i-c priority requirement.

Senate

Eliminates the current priority requirement and prohibits the Secretary from requiring State or local agencies to prioritize assistance to a particular group.



Farm Bill - Income Standards

Currently, FNS has the discretion to set CSFP income limits.

House

Requires Secretary to set max. income elig. standards, not to exceed 185% of poverty. Standards must be the same for both w-i-c and elderly.

Senate

Allows Secretary to permit States to set max. income elig. standards for elderly not to exceed 185% of poverty, but only if funds sufficient to support all States seeking to participate.



Policy Update - Food Items

- FD-032 (Re-Issued 12/19/07): Maximum Monthly Distribution Rates for Powdered Infant Formula
- Discontinuation of Soy-Based Formula
- NDM Distribution Rates - Effective March 1, extra distributions discontinued due to declining surplus
- Chili Added



Policy Update: Temporary Food Package Changes

June 7, 2007: FNS announced continuation of the policy which temporarily eliminates more expensive choices within categories.

- Reduces food package cost, while still offering a complete food package and variety to participants
- Generates savings for the program, maximizing program resources



Policy Update: Temporary Food Package Changes

Items temporarily eliminated:

- Grape Juice, Carton
- Cranapple Juice
- Dehydrated Potatoes
- Dry Blackeye Beans
- Pumpkin
- Canned pineapple unavailable regardless of cost

Subsequently, Egg Mix temporarily eliminated due to cost.



Policy Update - Memoranda

- FD-066: Continuation of Commodity Assistance During a Human Pandemic
- FD-071: Setting Aside the Commodity Acceptability Reporting Requirement



Commodity Initiatives

Sheldon E. Gordon, MS, RD, LD
Nutritionist
Program Support Branch
Food Distribution Division



What's New?

- **Food Package Improvements**
- **Commodity Fact Sheets**
- **New USDA Labels for Canned Fruits and Vegetables**
- **Commodity Image Initiative**



Commodity Improvements

- Lower Sodium
 - Canned Tomato Products
 - Canned Dry Beans
- Lower Fat
 - Canned Chicken
- Whole Grains
- Reduce Added Sugar





Commodity Fact Sheets

- New Design
- Updated Recipes
- User-Friendly
- Food Safety
- Helpful Links





Commercial Labels

USDA Group A Commodities

- 90% of juices are in USDA labels
- 70% of canned fruits and vegetables are in USDA labels (small vendors without a brand label)

USDA Group B Commodities

- All vendors are using their commercial label



Commercial Labels

- Why some vendors use USDA labels:
 - Small Businesses - No label of their own
 - Product not on the commercial market
 - USDA has different specifications than some commercial lines of food
 - The USDA label can be cheaper



New Commodity Labels

- Canned Fruits & Vegetables
 - New Feel
 - Branded Name “America’s Finest”
 - Commercial-Like Appearance
 - Eliminate negative stigma



New Commodity Labels

- So What's New?
 - New Images (Photos)
 - Actual pictures of fruits and veggies
 - Bold New Colors
 - Old 2 colors vs. new 4 colors
 - High gloss paper

Common Commercial Brands





Old Label

HALVES
Apricots
 LIGHT SYRUP



Distributed by USDA in cooperation with State and local or tribal governments for domestic food assistance programs.

NOT TO BE SOLD OR EXCHANGED
 Inspected by the U.S. Department of Agriculture

NET WEIGHT 1.5 OUNCES (42.5 GRAMS)



MyPyramid.gov
 STEPS TO A HEALTHIER YOU

CARE OF PRODUCT

- Store unopened can in a cool, dry place.
- Refrigerate after opening. Use within 3 days.
- Chill before serving.

CONTENTS About 1 1/2 cups

INGREDIENTS apricots, sugar, citric acid, potassium bitartrate, sodium citrate, natural apricot flavor, potassium sorbate, sodium benzoate, ascorbic acid, calcium ascorbate



To receive a copy of a nutrition education program, visit the Food and Nutrition Assistance website, Regional Nutrition Program, 3101 Park Center Drive, Alexandria, VA, 22304

Nutrition Facts panel
 Abbrev. simplified

UPC Code



New Label

AMERICA'S FINEST

Apricot Halves



Nutrition Facts

Serving Size 0 cup (000g)
Servings Per Container 0

Amount Per Serving

Calories 000 Calories from Fat 000

% Daily Value*

Total Fat 00g 00%

Saturated Fat 0g 00%

Cholesterol 00mg 00%

Sodium 000mg 00%

Total Carbohydrate 00g 00%

Dietary Fiber 0g 0%

Sugars 00g

Protein 00g

Vitamin A 0% • Vitamin C 0%

Calcium 00% • Iron 0%

Percent Daily Values are based on a 2,000 calorie diet. Your daily values may be higher or lower depending on your calorie needs:

	Calories	2,000	2,500
Total Fat	Less than	65g	80g
*Sati Fat	Less than	20g	25g
Cholesterol	Less than	300mg	300mg
Sodium	Less than	2,400mg	2,400mg
Total Carbohydrate		300g	375g
Dietary Fiber		25g	30g

INGREDIENTS: PREPARED YELLOW CORN, WATER, SALT, AND SODIUM BISULFITE (TO PROMOTE COLOR RETENTION).

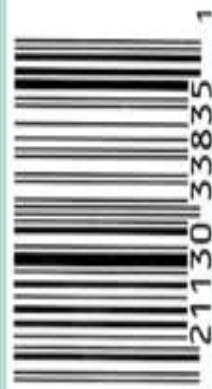
Distributed by:

XXXXX XXXXXXXX
 XXXXXXXX XXXXX XX
 XXXXXXXXXXXXXXXX
 XXXX
 XXXXXXX XXXX XX

Care of product

- Store unopened can in a cool, dry place.
- Refrigerate after opening.
- Use within 3 days after opening
- Heat before serving.

RD 05202



MyPyramid.gov
STEPS TO A HEALTHIER YOU

Eating fruits and vegetables provides health benefits. For more information, visit www.MyPyramid.gov to find a personal eating plan with foods and amounts that are right for you.





Commodity Image Initiative

- Commodity Perception
 - Dispel Myths;
 - Emphasize Facts; and,
 - Increase Awareness



2008 CSFP Resources & Caseload

Laura Castro, Branch Chief
Policy Branch
Food Distribution Division



2008 Resources & Caseload

- On December 26, President Bush signed the Consolidated Appropriations Act, 2008.

Program Appropriation	\$ 140.700 Million
- Rescission	0.985
+ Cash Carry-in	0.115
<u>Total Cash Resource</u>	<u>\$ 139.830</u>
- Commodity Admin. Costs	\$ 0.661

Total Remaining \$139.169 Million



2008 Resources & Caseload

- FY 2008 appropriation was significantly higher than FY 2007
- However, there was a 2.5% reduction in nationwide caseload

2007 Caseload: 485,614

2008 Caseload: 473,473

- Why?



2008 Resources & Caseload

Contributing Factors:

1. An increase in the legislatively-mandated administrative grant per assigned caseload slot
 - FY 2007: \$59.71
 - FY 2008: \$62.67
2. Anticipated significant increases in food costs & less free foods
3. No expected excess inventory to drawdown



President's FY 2009 Budget Request

- FY 2009 budget proposes to cease CSFP operations.
- Includes \$2 million for Food Stamp State agencies in States operating the CSFP to provide outreach and to assist individuals to enroll in FSP.
- Includes \$20 million for transitional benefits to qualified seniors.



Commodity Outlook & Food Ordering

Peggy Cantfil, Branch Chief
Operations Branch
Food Distribution Division



Commodity Outlook & Food Ordering

- Funding Issues
- Commodity Outlook & Purchase Update
- Long-Term Contracting & Ordering



Funding

- 4TH QUARTER FY 07
- 1ST QUARTER FY 08
- 4TH QUARTER FY 08
- 1ST QUARTER FY 09



Commodity Outlook

- VEGETABLES
- FRUIT CANNED & JUICE
- BEANS – DRIED



Commodity Outlook Cont'd...

- MEAT & POULTRY
- DAIRY
- GRAIN



Food Ordering & Long-Term Contracts

- Fruit canned IDIQ July-June
 - Indefinite quantity indefinite delivery
 - Apricots, peaches, pears, mixed fruit

- Low sodium vegetables Crop Year Ordering
 - July 08 thru Sept 09

- CHEESE – Moving to a calendar year
 - ALL ORDERS DUE MARCH 1
FOR DELIVERIES JULY 07- JUNE 09
 - June 08 ORDERS DUE
FOR JAN 09 – DEC 09

Questions





CSFP Information On-Line



www.commodityfoods.usda.gov