

Marine Life Protection Act Update

- April 13, 2007 Commission meeting in Bodega Bay
- Commissioners Rogers, Gustafson, Kellogg, Hanna
- Public testimony from 68 speakers
- Preferred Central Coast MPA alternative adopted by unanimous vote

Preferred Alternative

- 29 MPAs totaling 204 square miles
- Approx. 18% of state waters
- 13 State Marine Reserves
- SMRs total 85 square miles



Options Adopted

- Allow kelp harvest by hand at Año Nuevo SMCA
- Allow harvest of pelagic finfish only at Soquel Canyon and Portuguese Ledge SMCAs
- Allow recreational finfish fishing at Ed Ricketts SMCA, which includes Breakwater
- Allow commercial kelp harvest by hand at White Rock (Cambria) SMCA
- Adopt Cambria SMP as SMCA first

Department's Primary Focus

- Public outreach and education
- Signage and brochures with maps

Potential Fishing Impacts within and outside Sanctuary waters

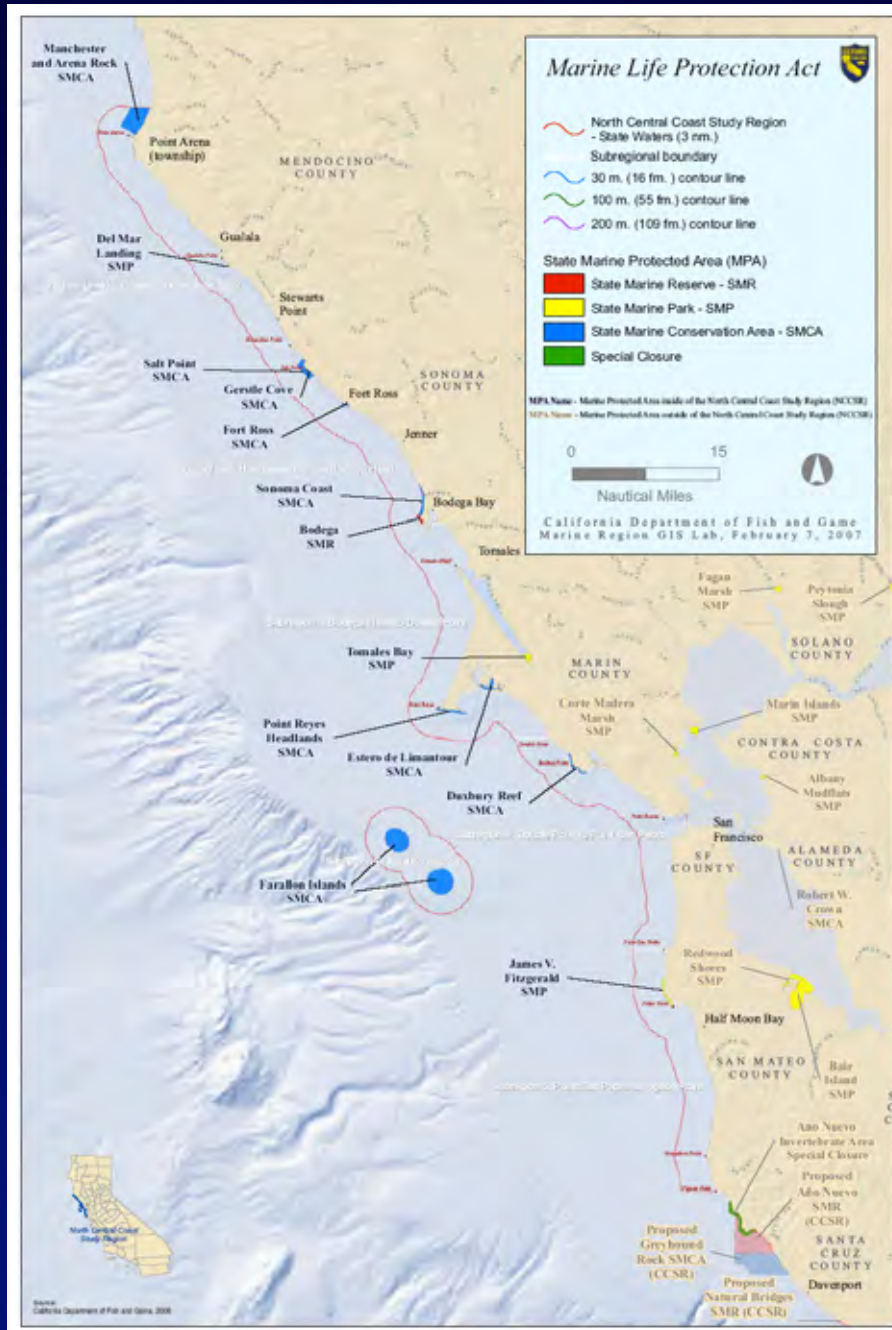
- Asilomar SMR
- Año Nuevo SMCA
- Soquel Canyon SMCA
- Pt. Sur SMR/SMCA
- Piedras Blancas SMR/SMCA
- Pt. Buchon SMR/SMCA

Additional MPA Protection in Non-consumptive Diving Areas

- Lovers Point SMR
- Asilomar SMR
- Carmel Pinnacles SMR
- Pt. Lobos SMR

North Central Coast Study Region

- Study Region
 - Pigeon Point to Alder Creek



North Central Coast Study Region

- Regional Workshops

Held in late March

- Introduced the MLPA process to the public
- Informed the public about opportunities to participate in the process
- Discussed “lessons learned” from the CCR process

North Central Coast Study Region

- Regional Workshops
 - Locations
 - Gualala
 - San Rafael
 - Bodega Bay
 - Half Moon Bay
 - San Francisco

North Central Coast Study Region

- Blue Ribbon Task Force
 - Members were announced in February, 2007
 - First meeting was held in Sacramento at the end of March
 - Items presented:
 - The Charge of the Task Force
 - Lessons learned from the CCR
 - Introduction of the NCCSR

North Central Coast Study Region

- Regional Stakeholder Group (RSG)
 - Nominations to the RSG were received
 - Appointments to the RSG will be announced soon
 - First meeting is scheduled for May 22 and 23, 2007

North Central Coast Study Region

- Science Advisory Team (SAT)
 - Nominations to the SAT were received
 - Appointments to the SAT will be announced soon
 - First meeting is tentatively scheduled for early June

North Central Coast Study Region

- EcoTrust Study
 - Location based commercial fishing data
 - Similar to study done for CCR
 - Will be enhanced from the CCR study
 - Lessons learned from the CCR
 - Department input
 - Met with representatives from the commercial fishing community before the contract was granted