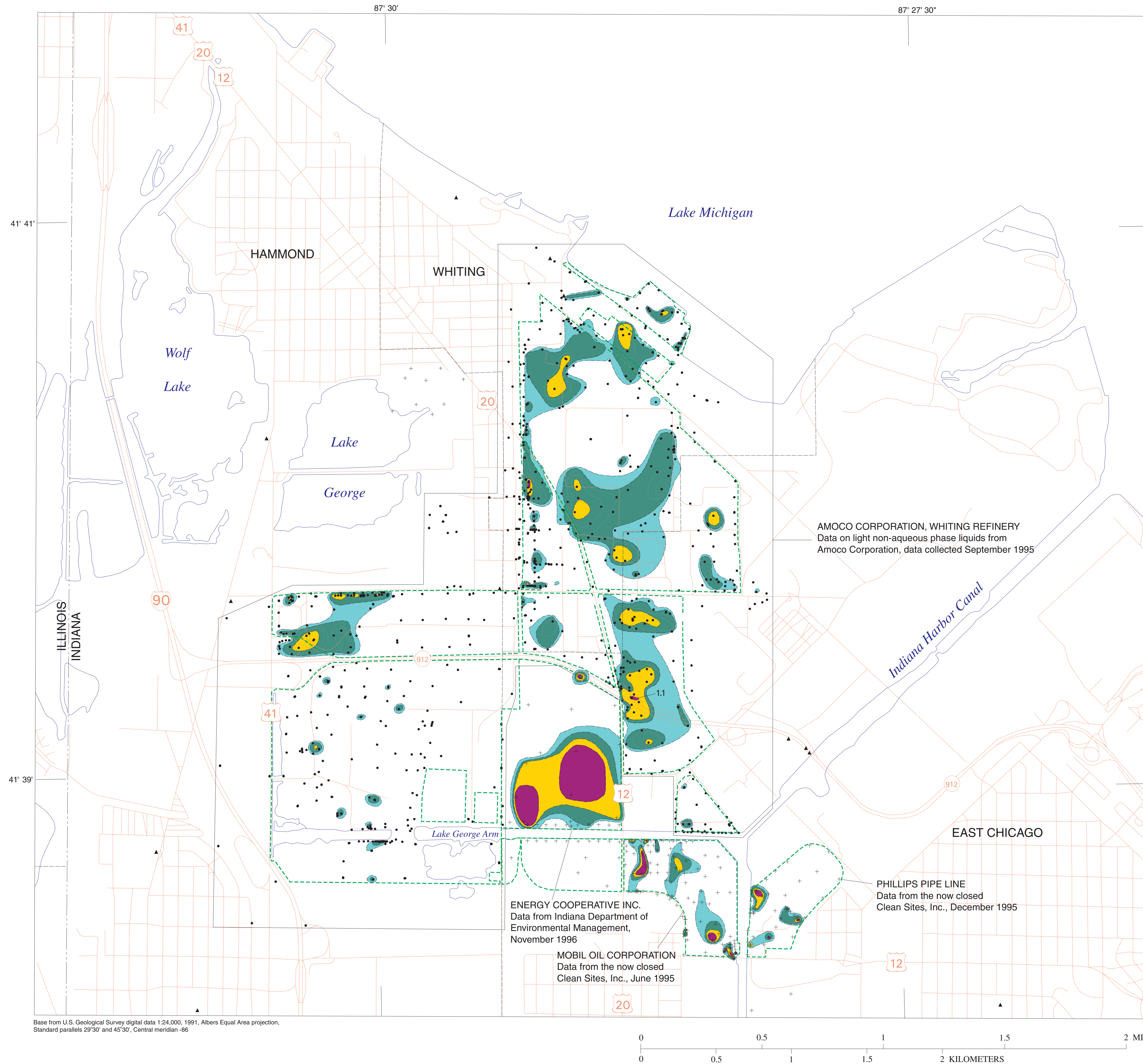


Cohen, D.A., Greeman, T.K., and Buszka, P.M., 2002, Surface-Water and Ground-Water Hydrology and Contaminant Detections in Ground Water for a Natural Resource Damage Assessment of the Indiana Harbor Canal and Nearshore Lake Michigan Watersheds, Northwestern Indiana

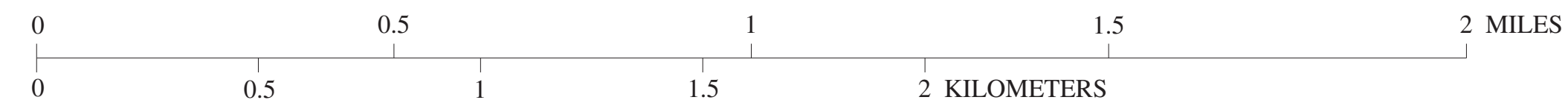


**EXPLANATION**

- THICKNESS OF LIGHT, NON-AQUEOUS PHASE LIQUIDS**
- LESS THAN 0.1 FEET
  - 0.1 TO 0.49 FEET
  - 0.5 TO 0.99 FEET
  - GREATER THAN 1.0 FEET
- FACILITY BOUNDARY
  - LOCATION OF AMOCO CORPORATION MONITORING WELL
  - LOCATION OF U.S. GEOLOGICAL SURVEY MONITORING WELL
  - LOCATION OF OTHER MONITORING WELL



Base from U.S. Geological Survey digital data 1:24,000, 1991, Albers Equal Area projection, Standard parallels 29°30' and 45°30', Central meridian -86



**THICKNESS OF LIGHT NON-AQUEOUS PHASE LIQUIDS ON GROUND WATER NEAR THE INDIANA HARBOR CANAL, NATURAL RESOURCE DAMAGE ASSESSMENT AREA, NORTHWESTERN INDIANA**