
Figures

Chapter 9 - West Branch of the Grand Calumet River - II

Figure 9.1. Location of sampling stations for surficial sediment chemistry in the WBGCR-II.

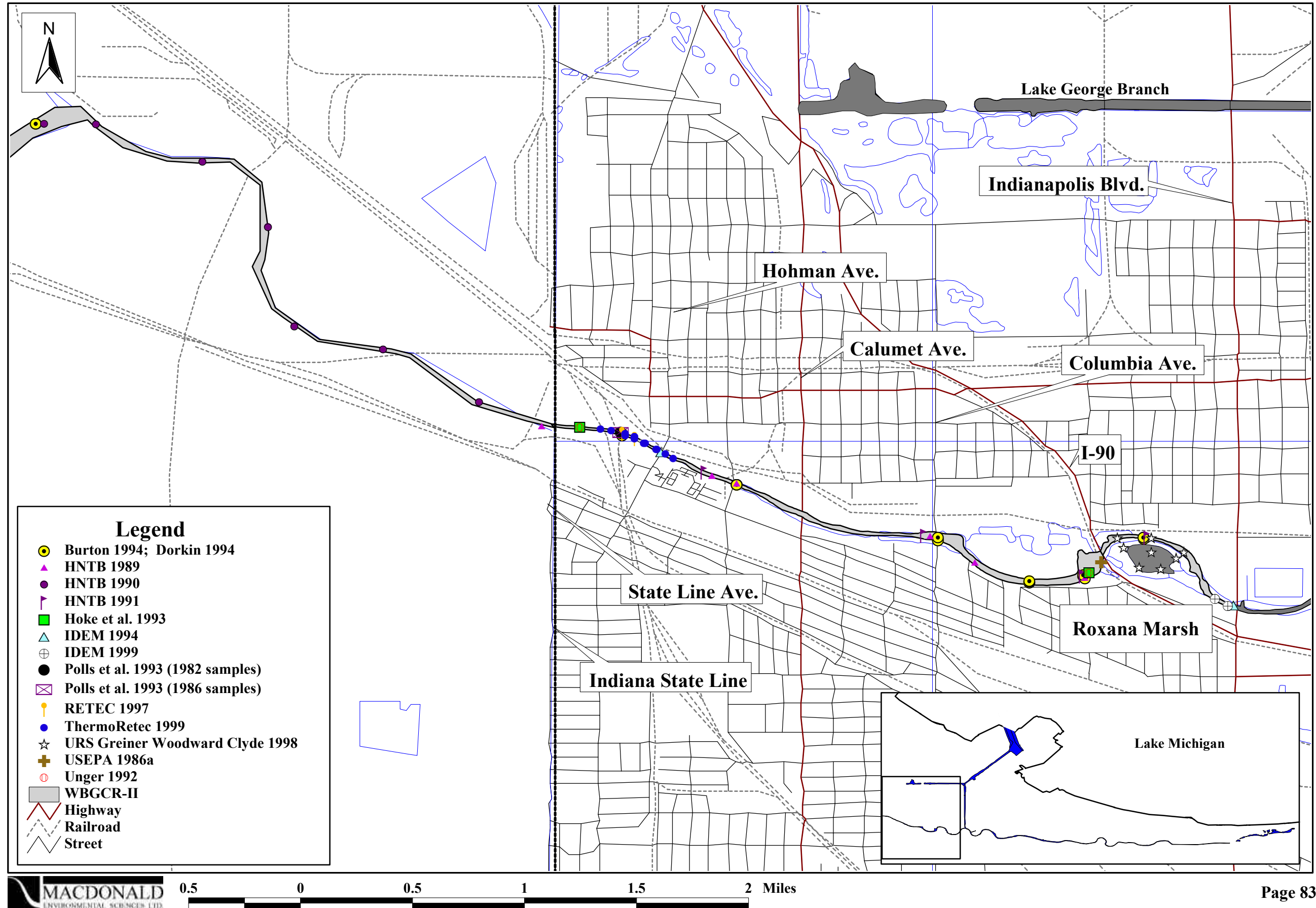


Figure 9.2. Location of sampling stations for sub-surface sediment chemistry in the WBGCR-II.

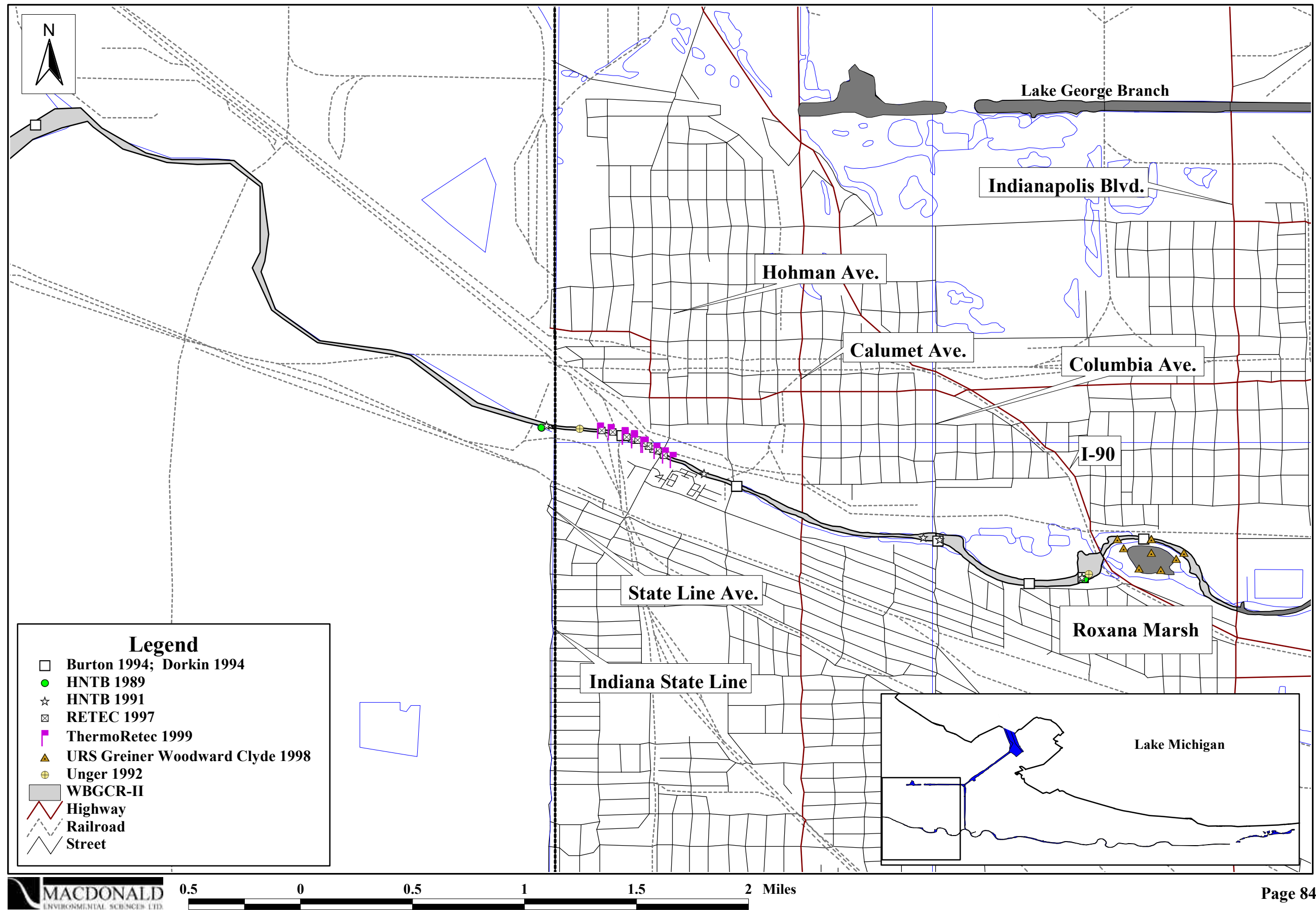


Figure 9.3. Location of sampling stations for sediment toxicity testing in the WBGCR-II.

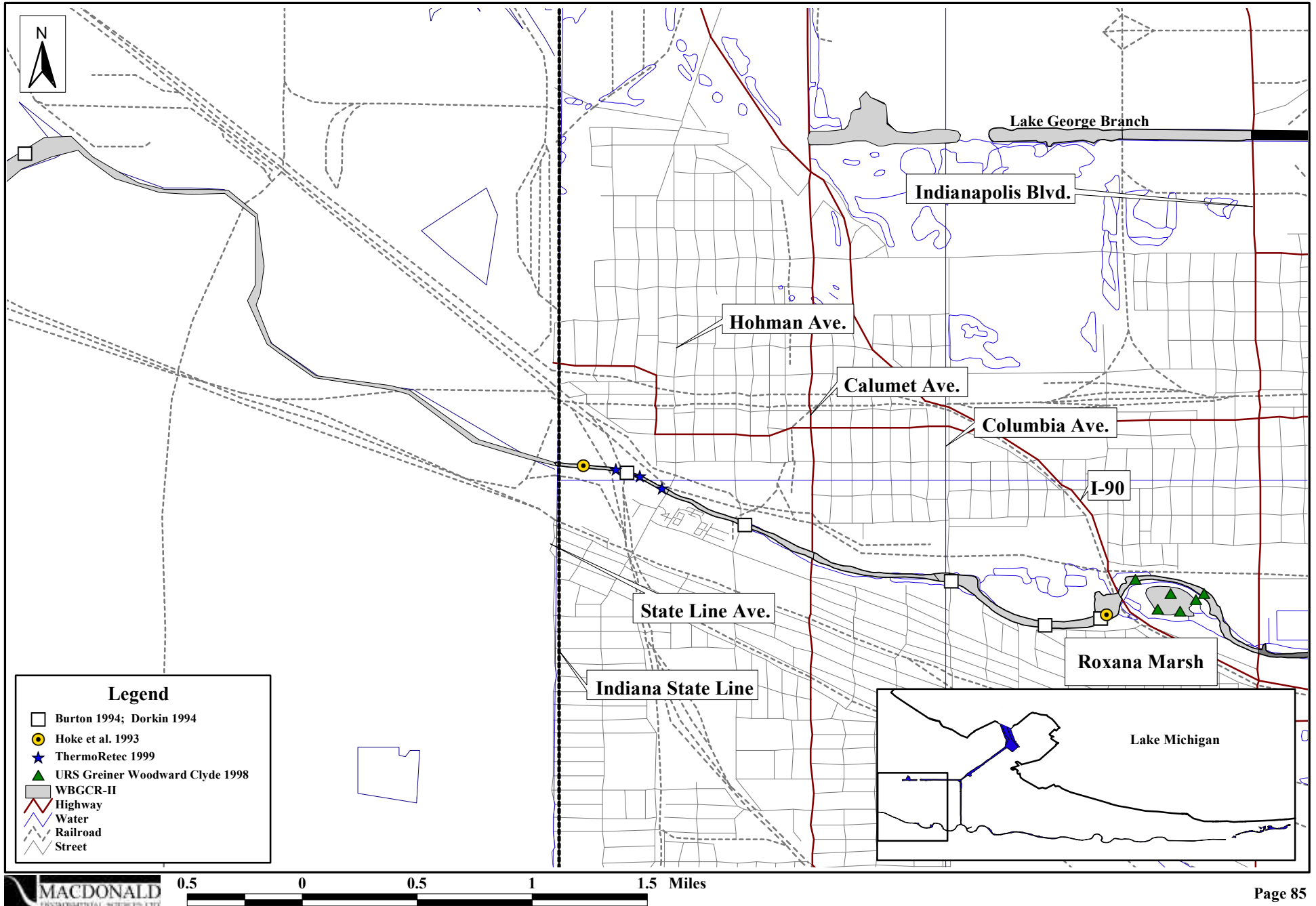


Figure 9.4. Areal extent of altered and unaltered benthic invertebrate communities in the WBGCR-II.

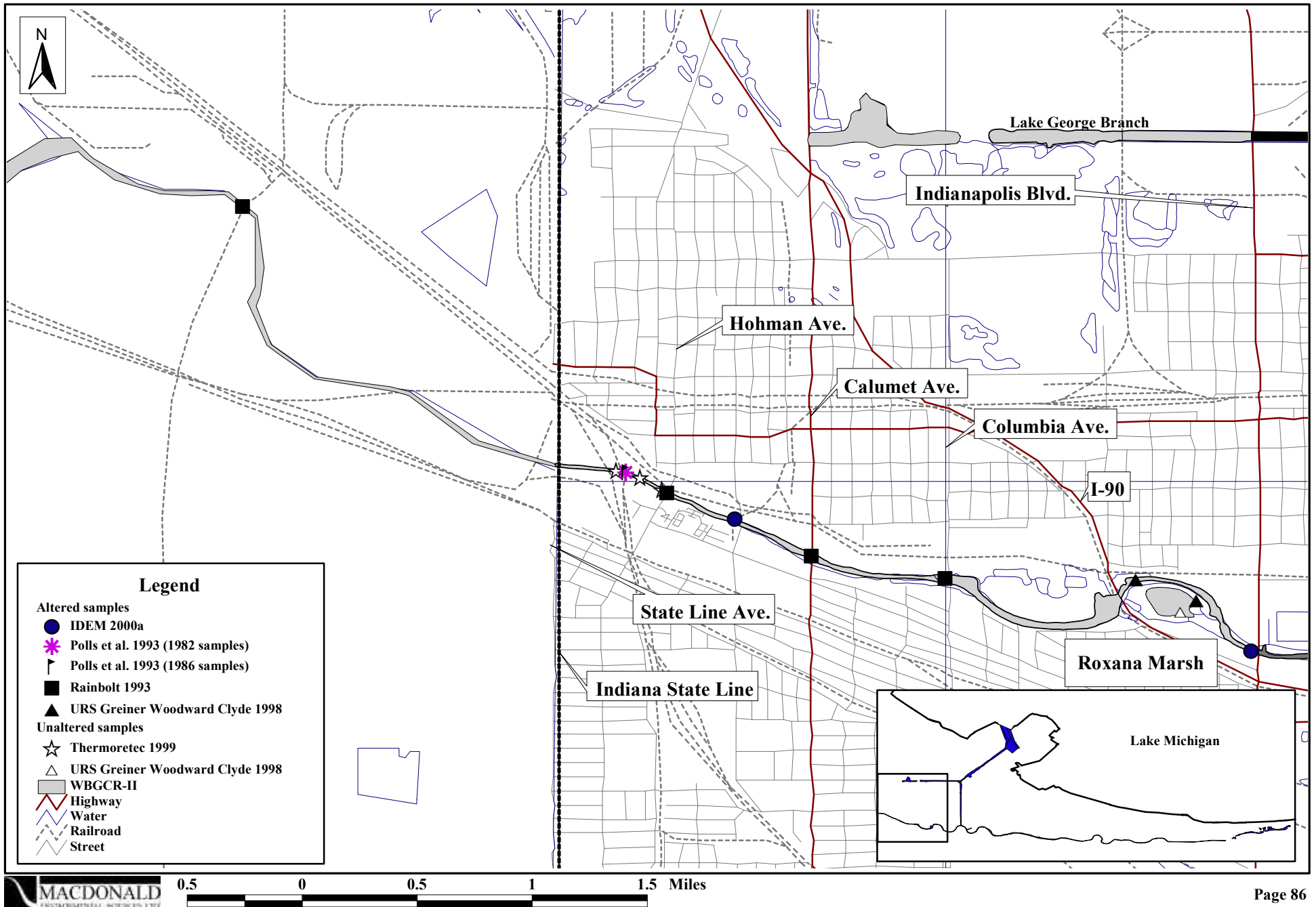


Figure 9.5. Location of sampling stations for tissue chemistry in the WBGCR-II.

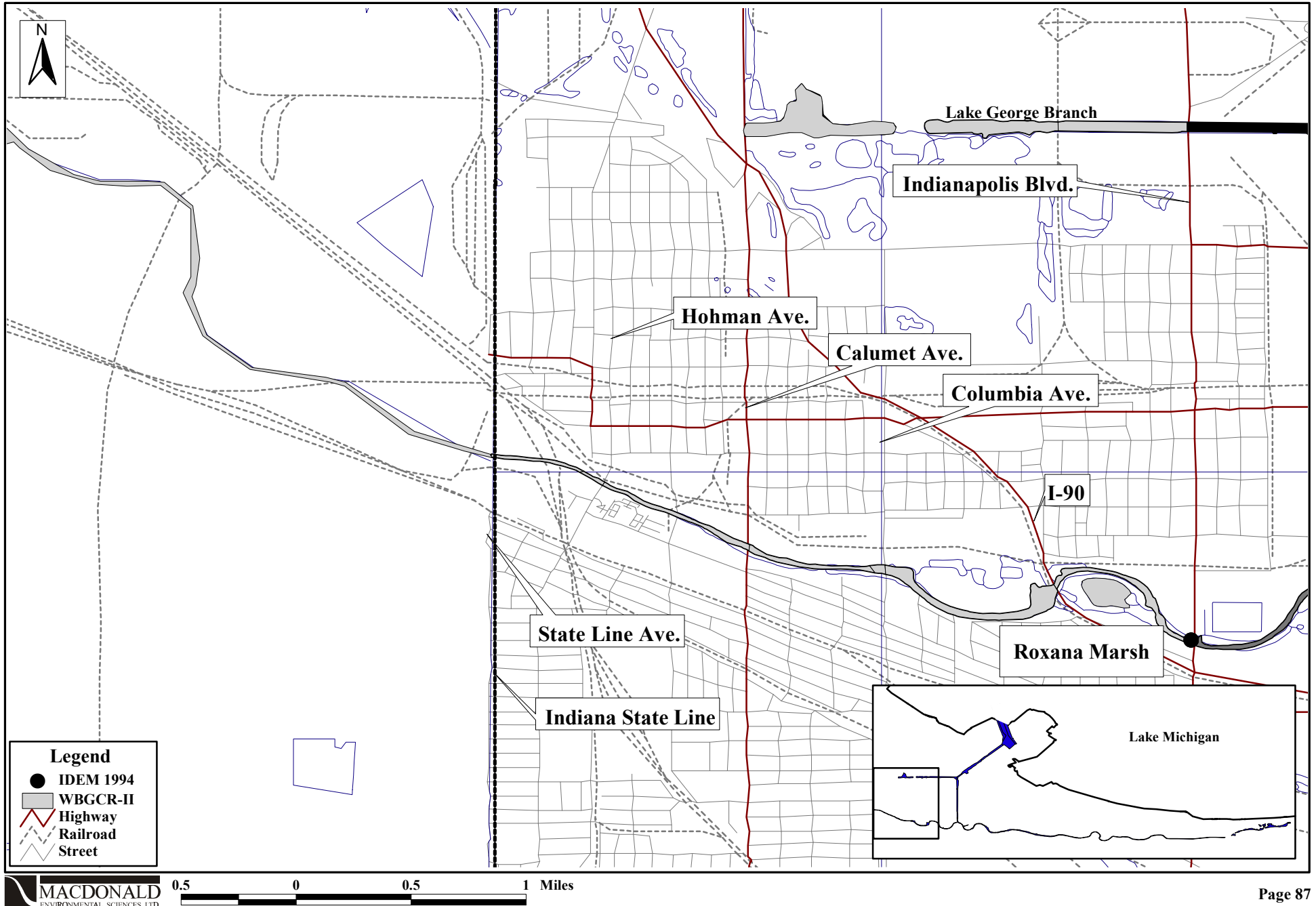


Figure 9.6. Spatial distribution of mean PEC-Qs in surficial sediments within the WBGCR-II.

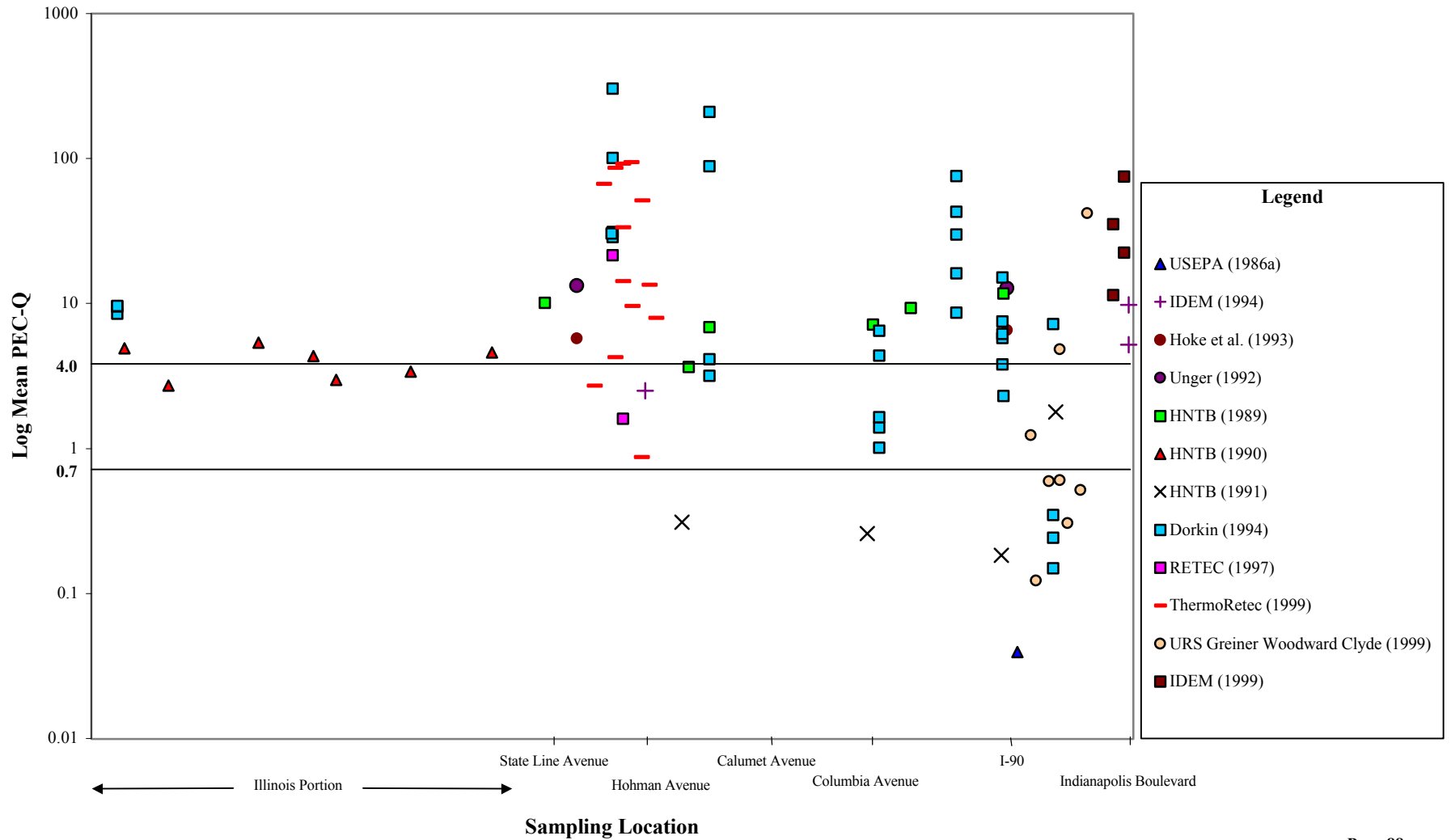


Figure 9.7. Areal extent of injury to surficial sediments in the WBGCR-II.

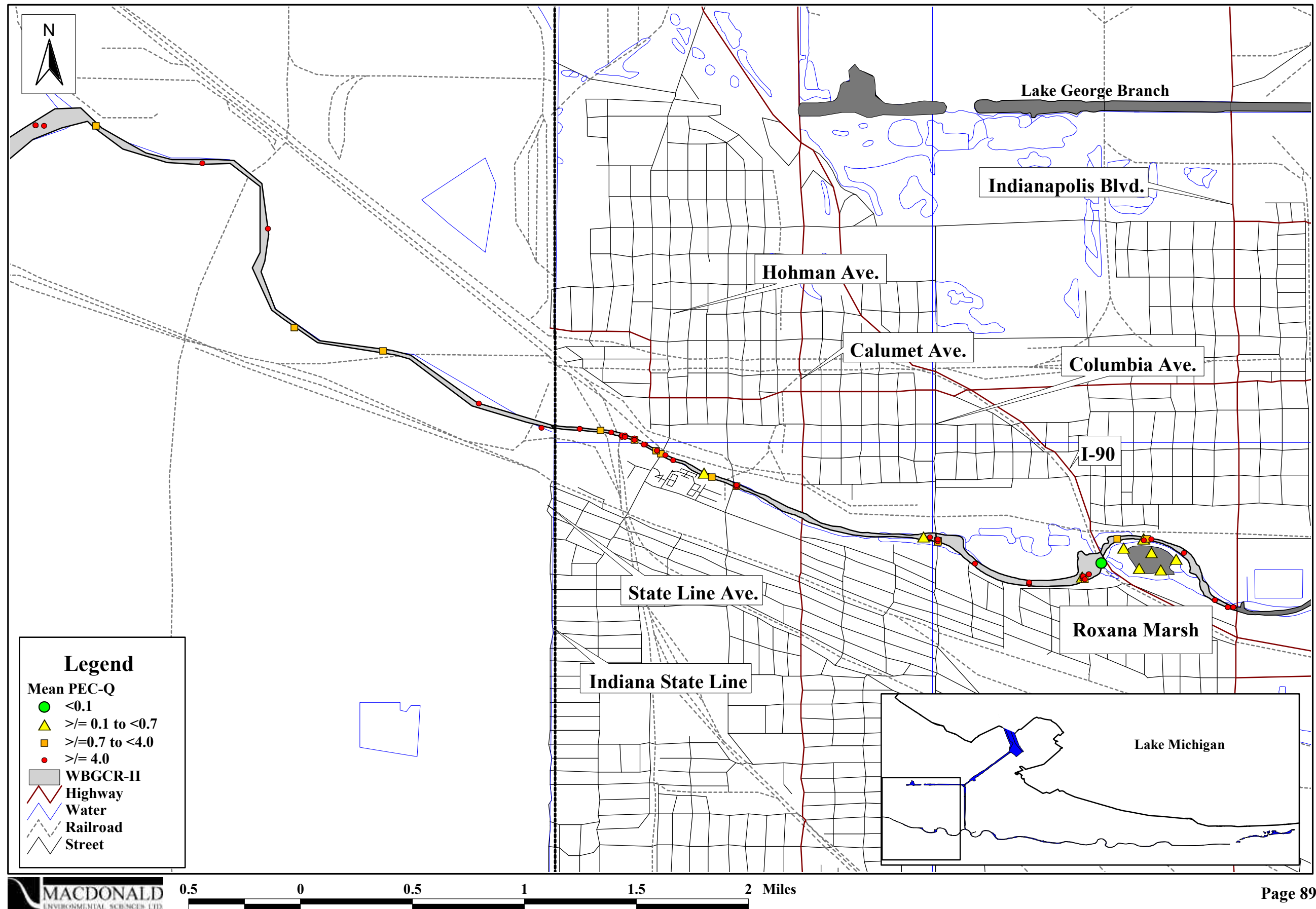


Figure 9.9. Areal extent of injury to sub-surface sediments in the WBGCR-II.

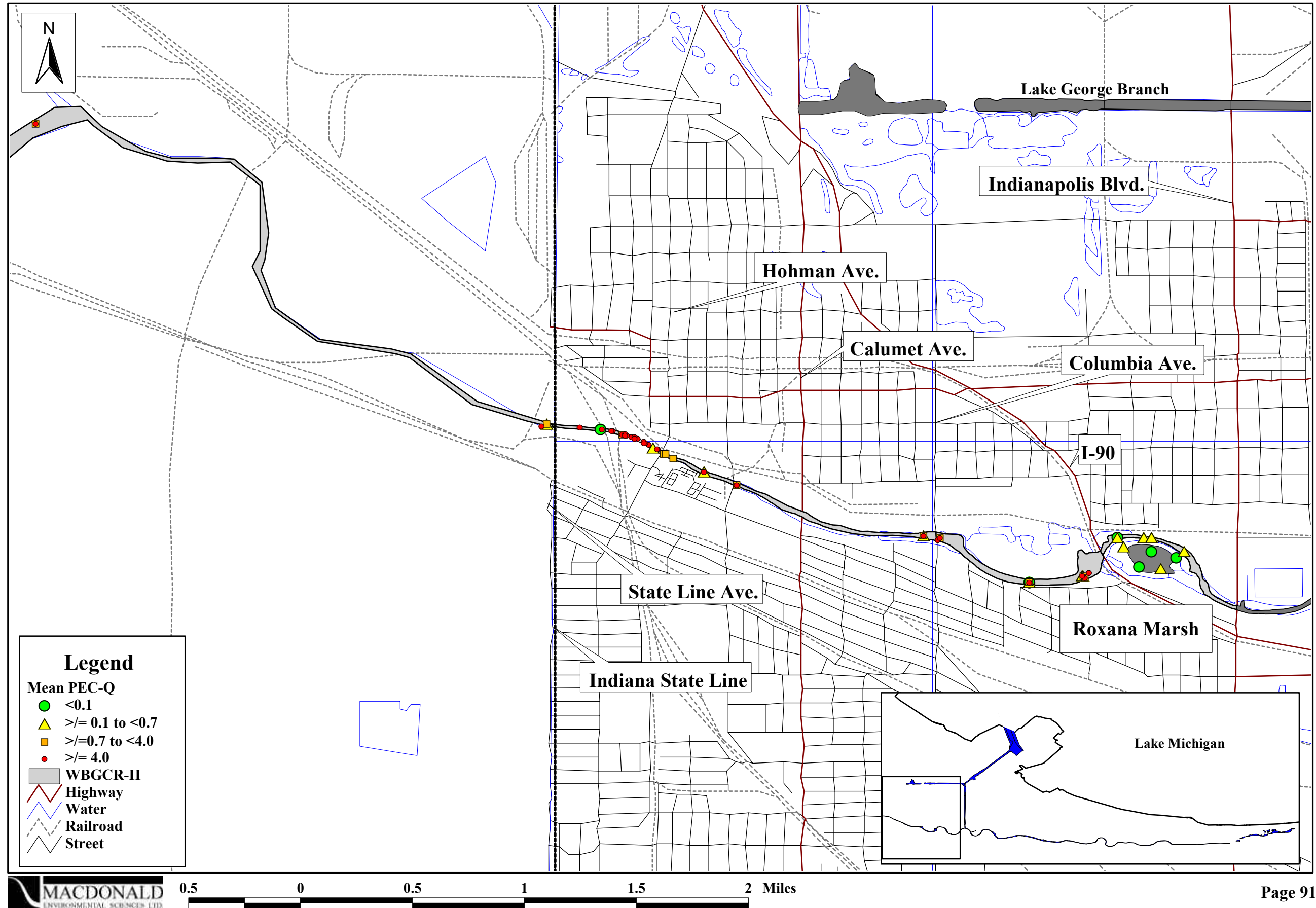


Figure 9.10. Areal extent of sediment toxicity in the WBGCR-II.

