

---

# **Figures**

## **Chapter 4 - Existing Information on SQ Conditions in the Assessment Area**

---

Figure 4.1. Location of sediment sampling stations for Lucas and Steinfeld (1972).

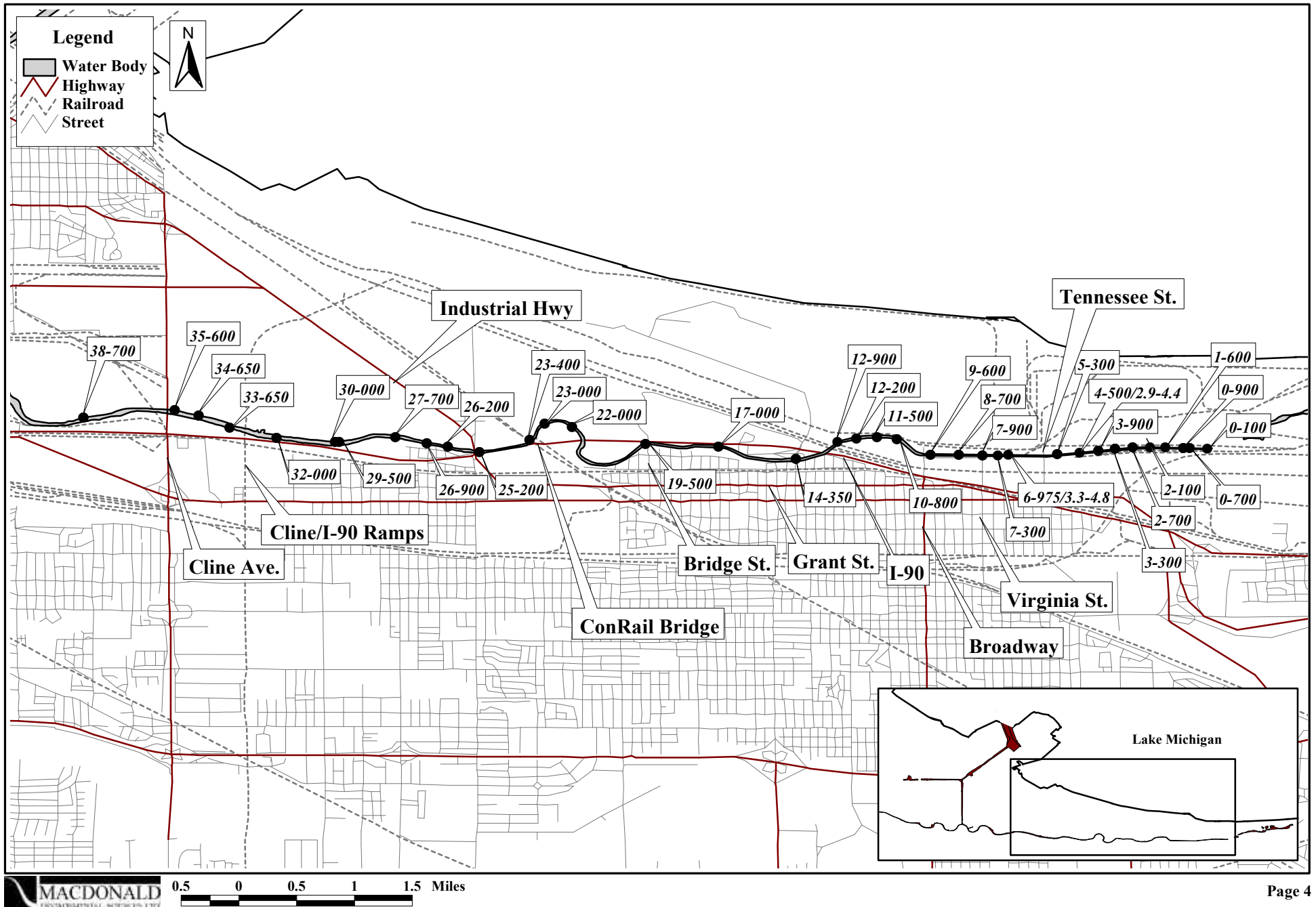


Figure 4.2. Location of sediment sampling stations for USACE (1980a).

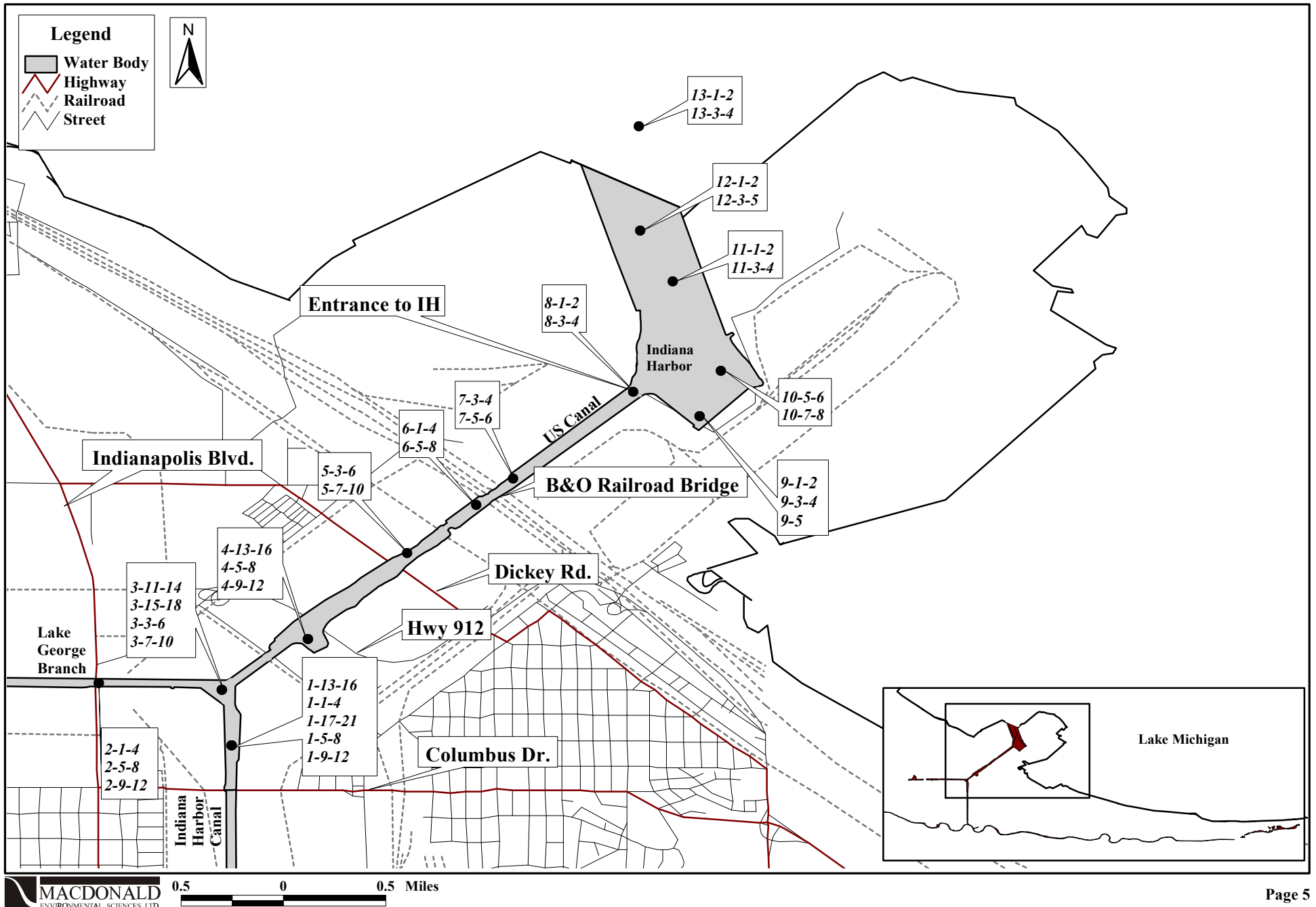


Figure 4.3. Location of sediment sampling stations for USACE (1980b).

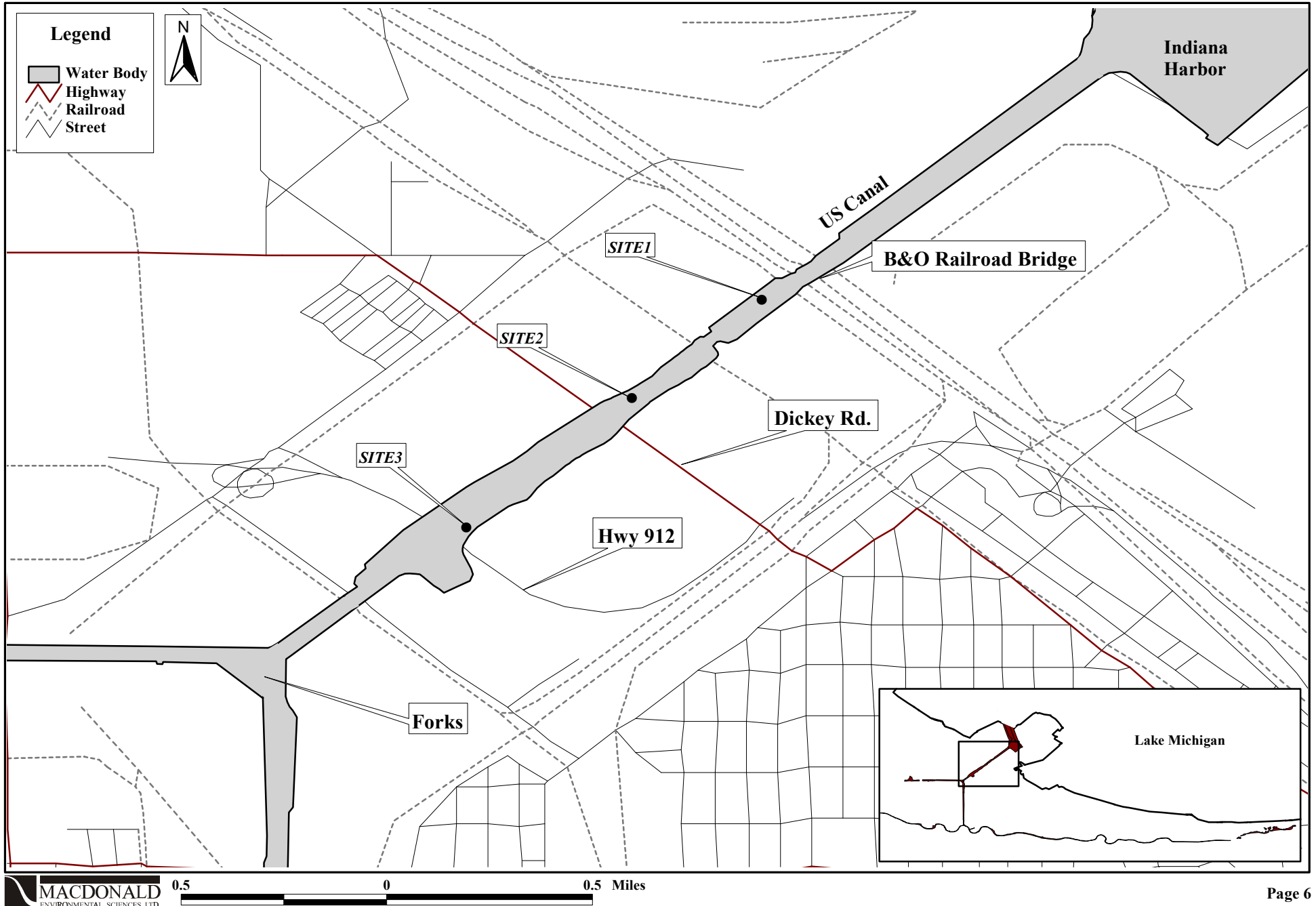


Figure 4.4. Location of sediment and benthic macroinvertebrate sampling stations for Polls et al. (1993), 1982 and 1986 sample dates.

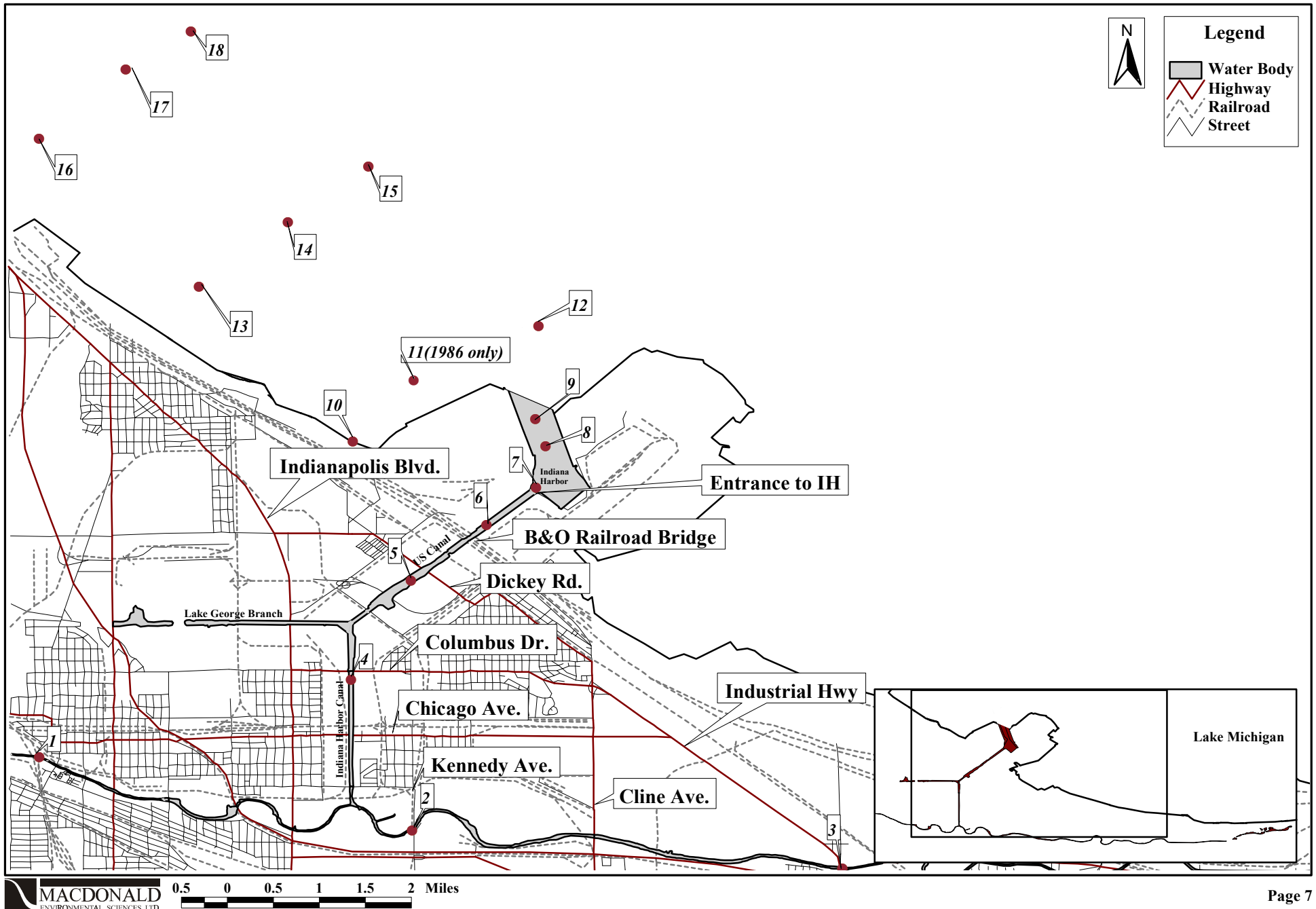


Figure 4.5. Location of sediment sampling stations for USACE (1983).

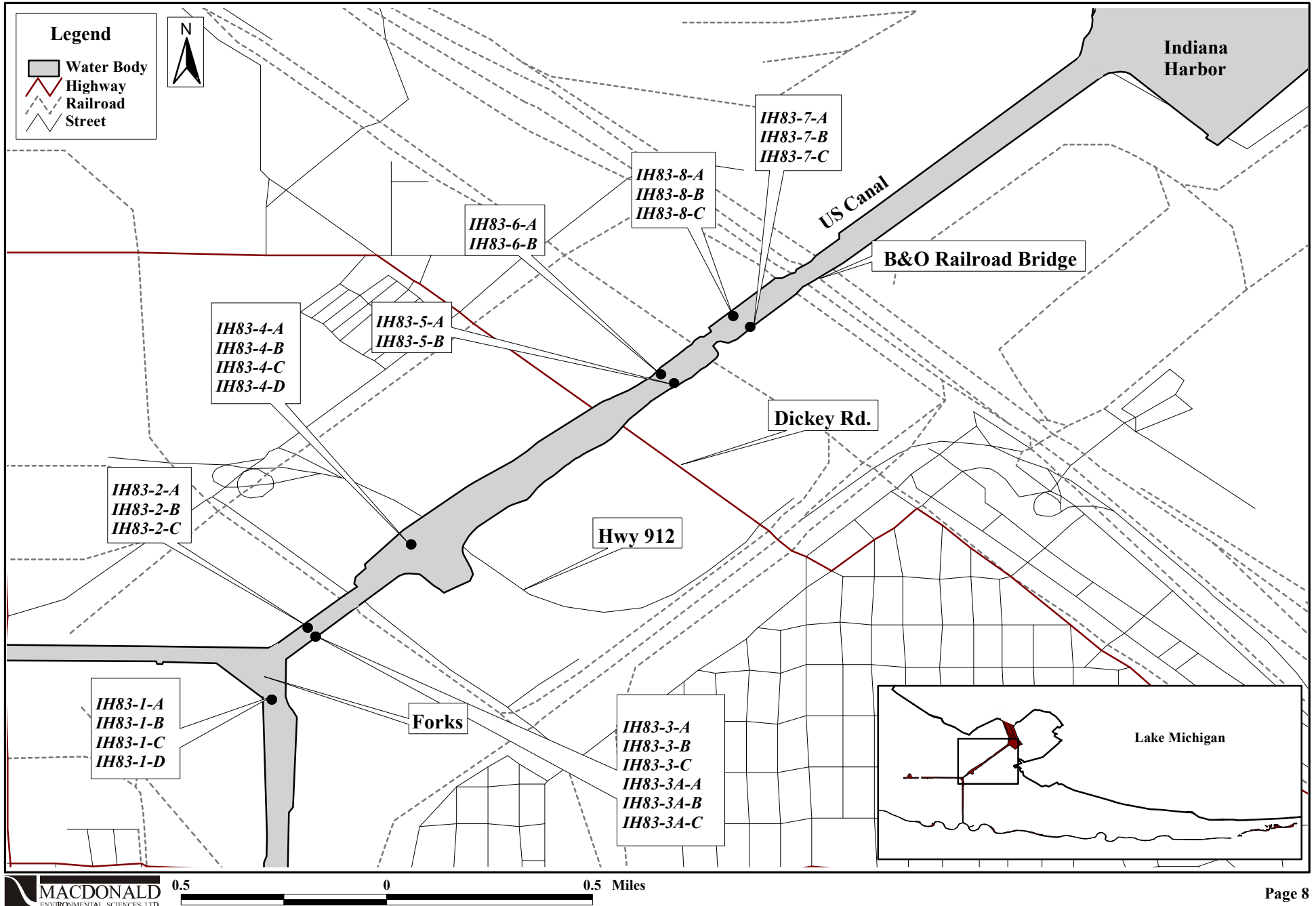


Figure 4.6. Location of benthic macroinvertebrate sampling stations for Polls and Dennison (1984).

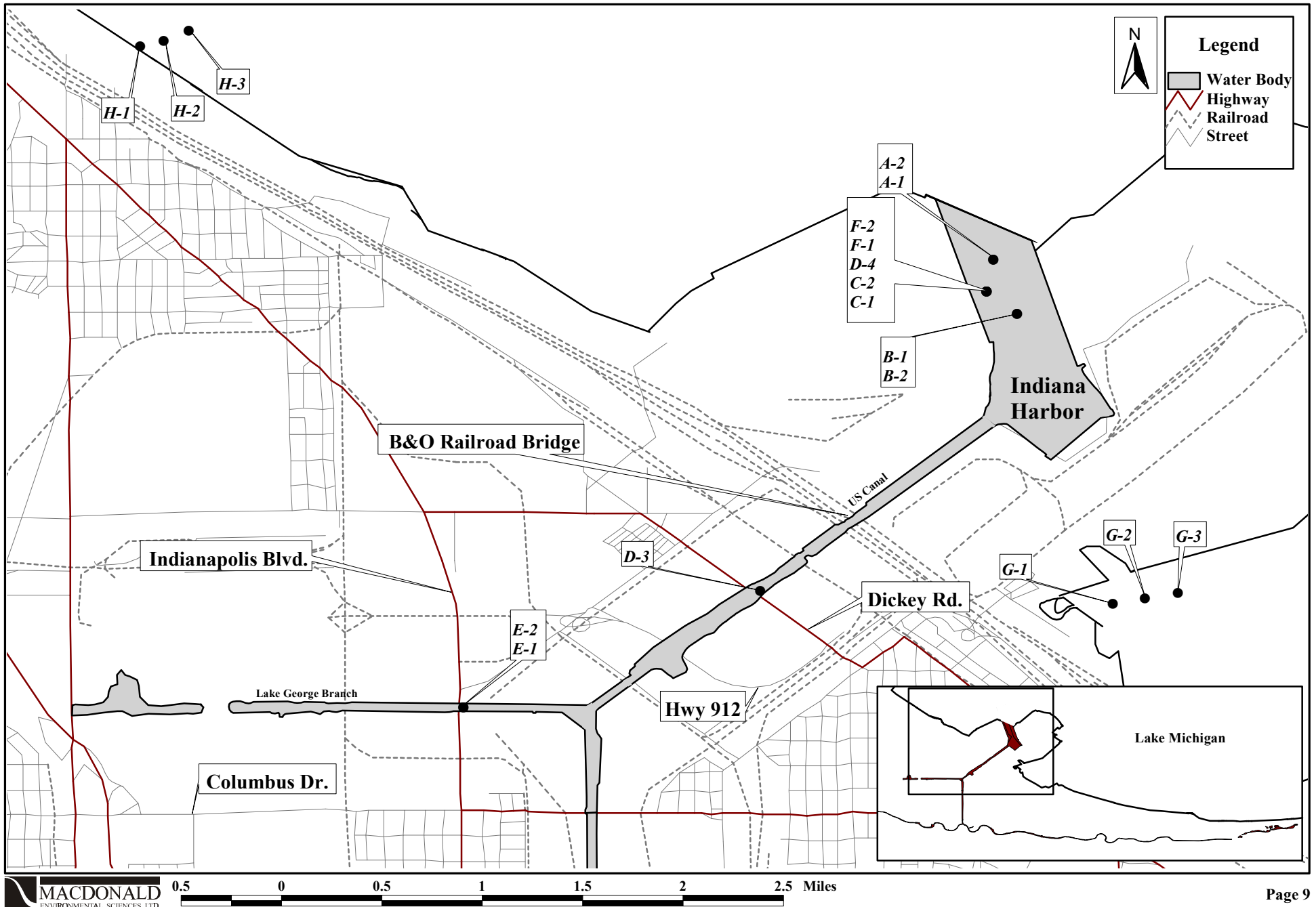


Figure 4.7. Location of sediment and benthic macroinvertebrate sampling stations for LTI (1984).

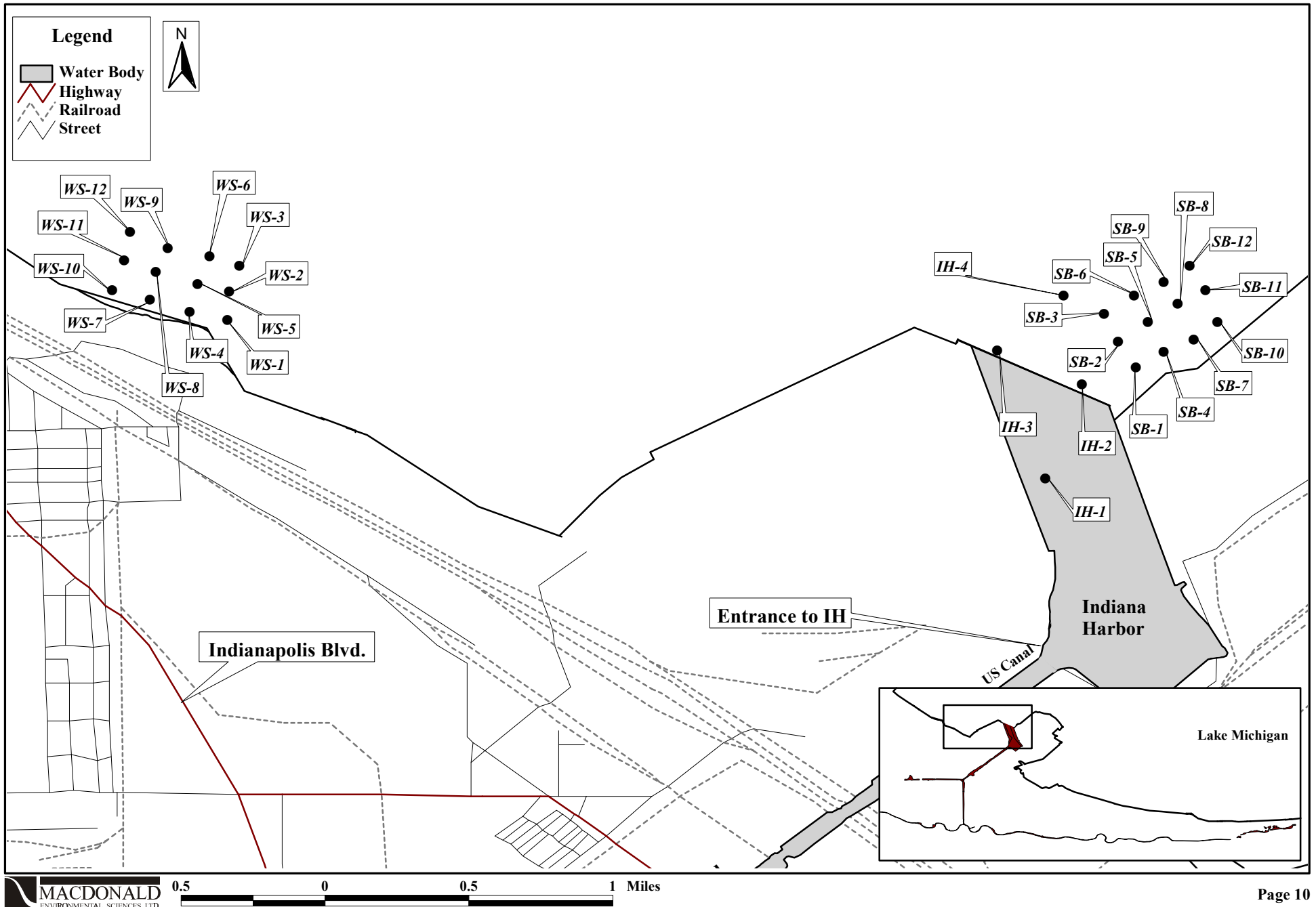




Figure 4.8. Location of sediment sampling stations for USEPA (1986a).

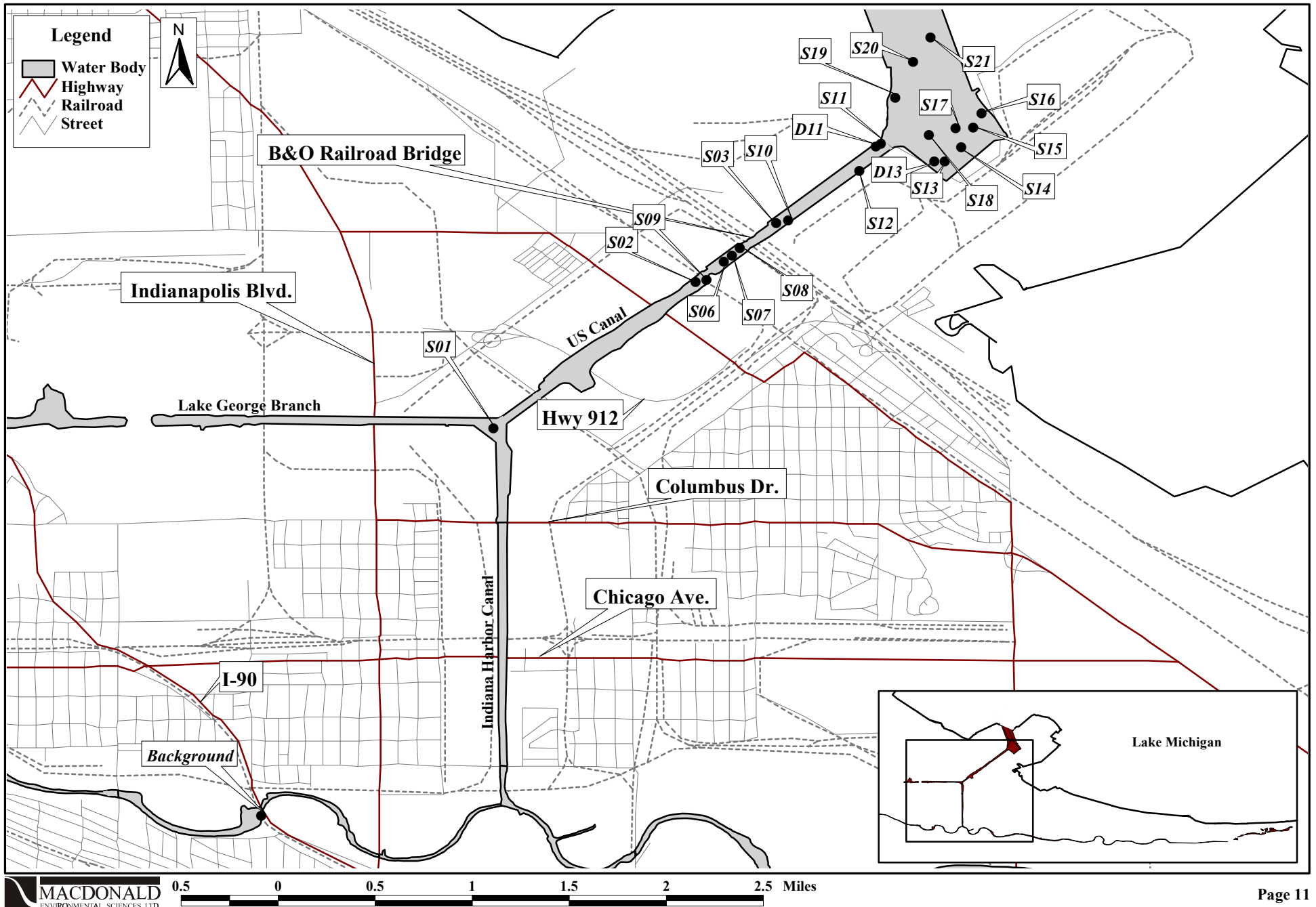


Figure 4.9. Location of sediment sampling stations for Polls (1988).

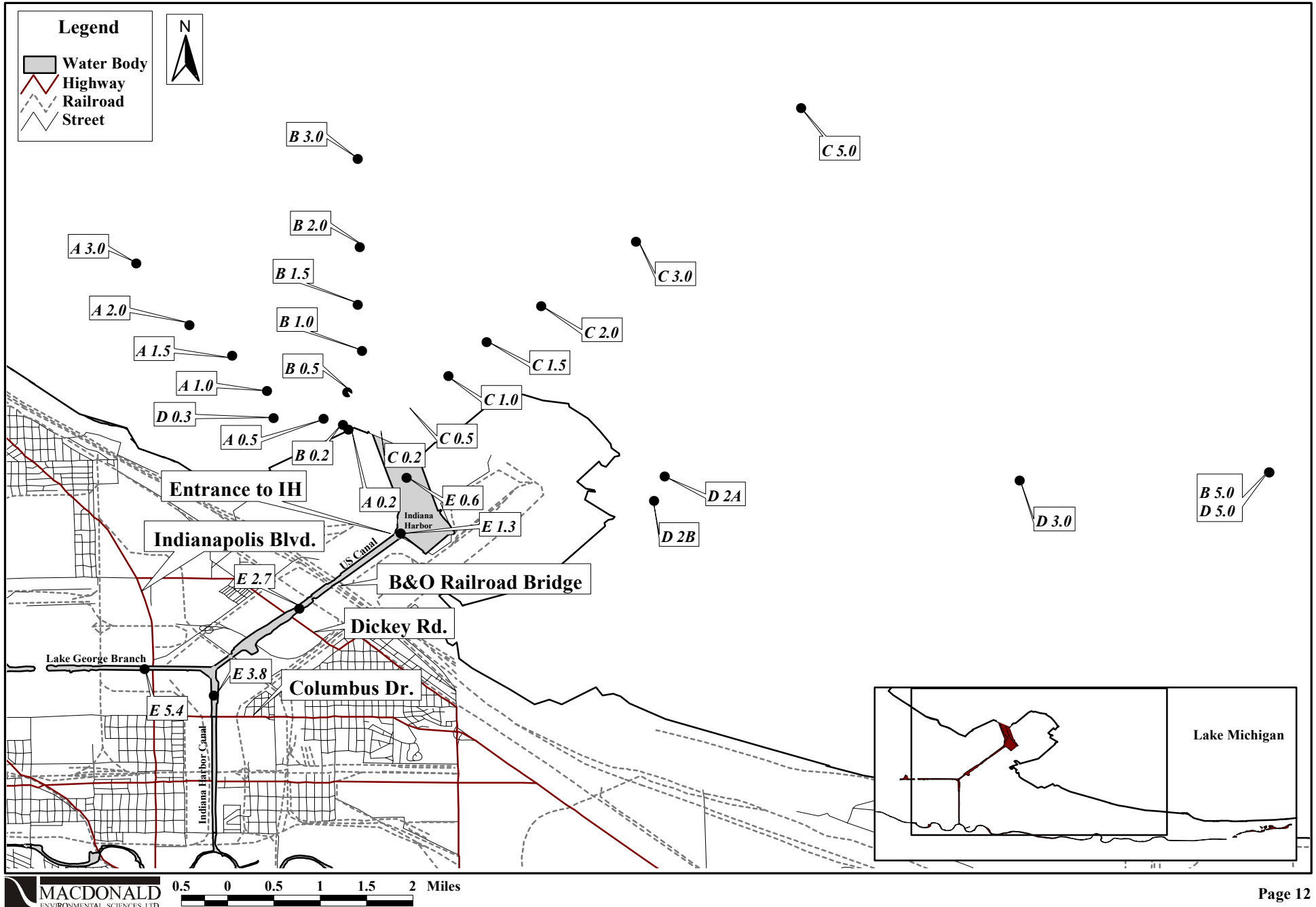


Figure 4.10. Location of sediment sampling stations for IDEM (1994).

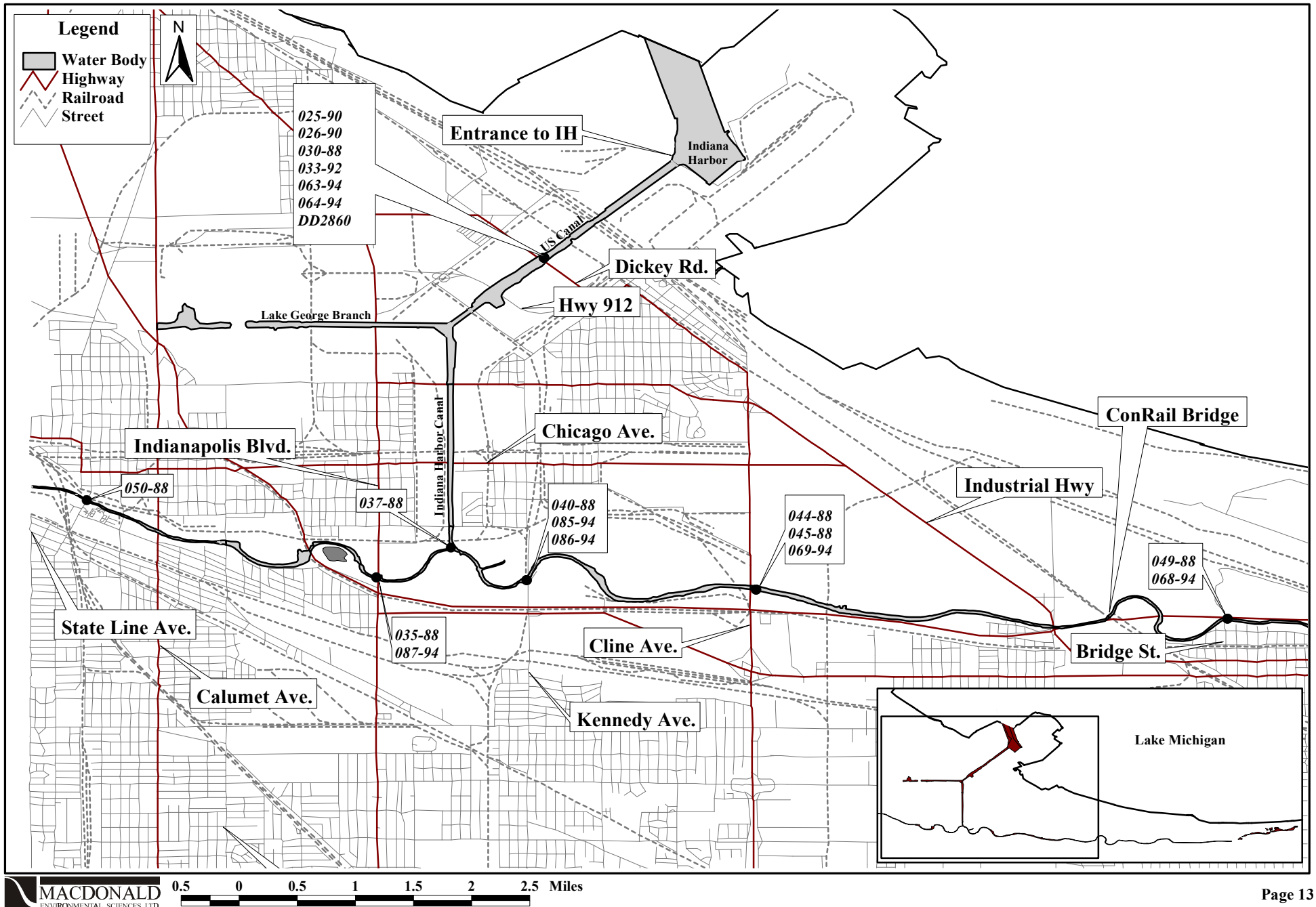


Figure 4.11. Location of sediment sampling stations for Hoke et al. (1993).

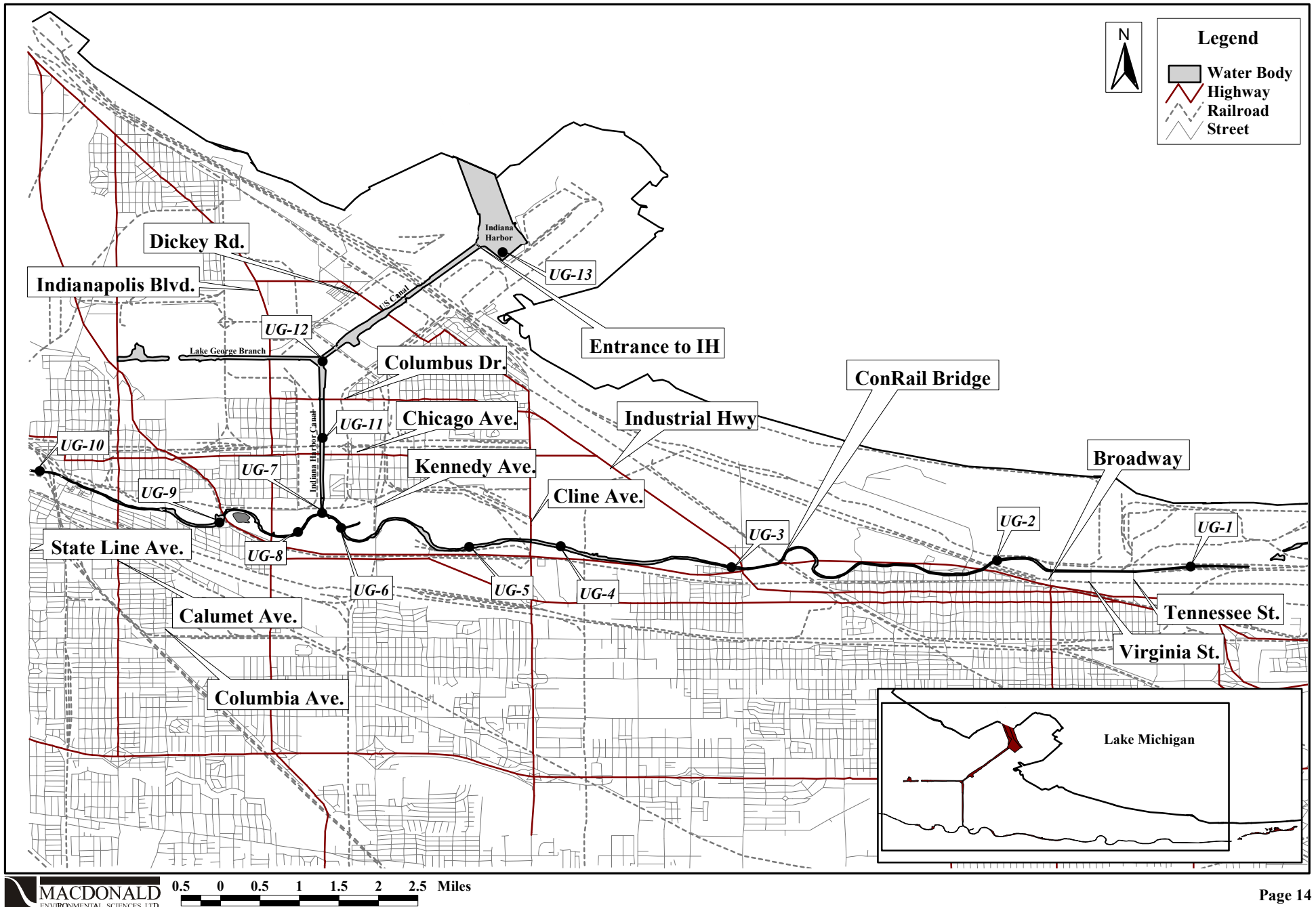


Figure 4.12. Location of sediment sampling stations for Unger (1992).

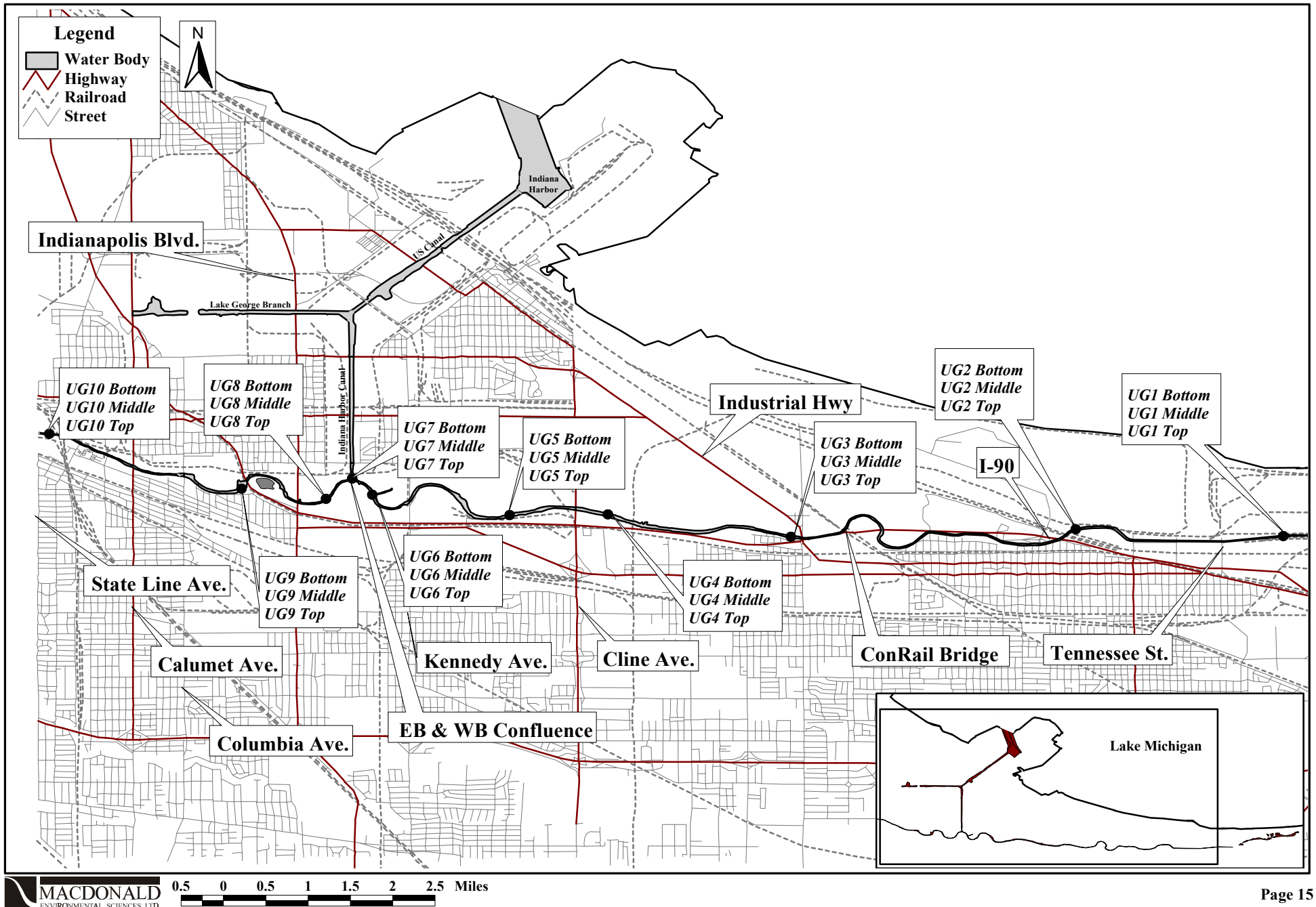




Figure 4.13. Location of sediment and benthic macroinvertebrate sampling stations for USEPA (1996a).

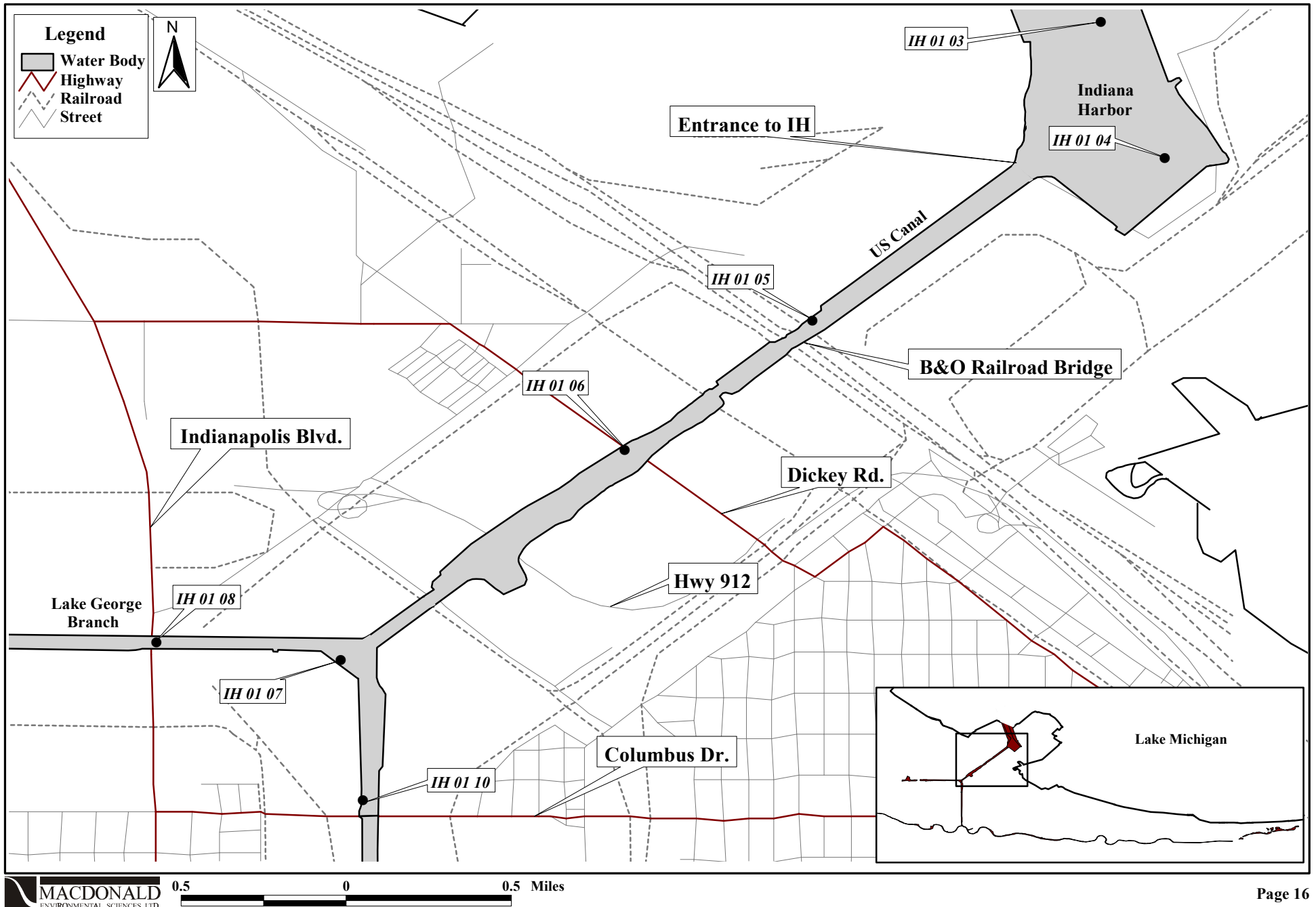


Figure 4.14. Location of sediment and benthic macroinvertebrate sampling stations for Risatti and Ross (1989).

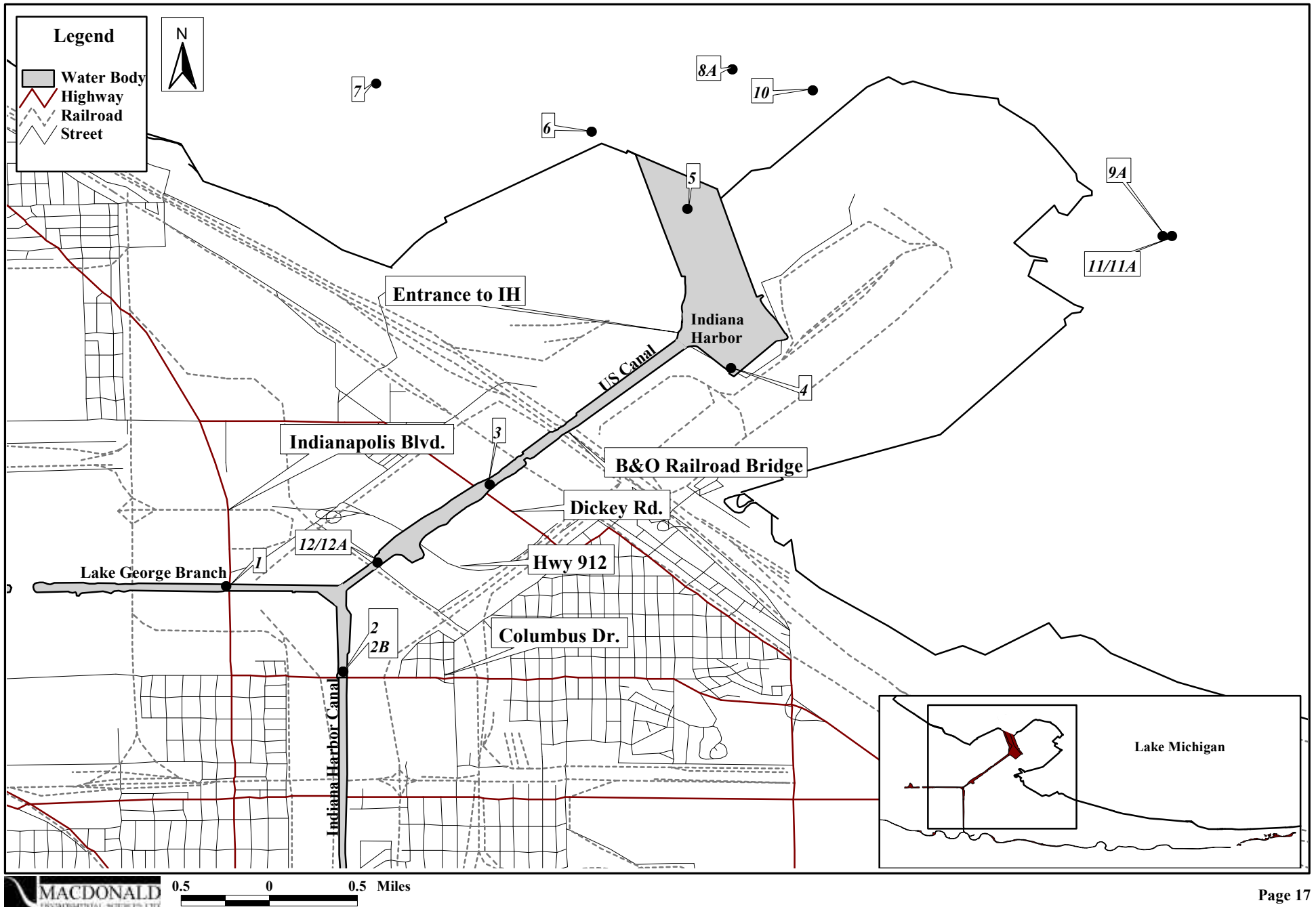


Figure 4.15. Location of sediment sampling stations for HNTB (1989).

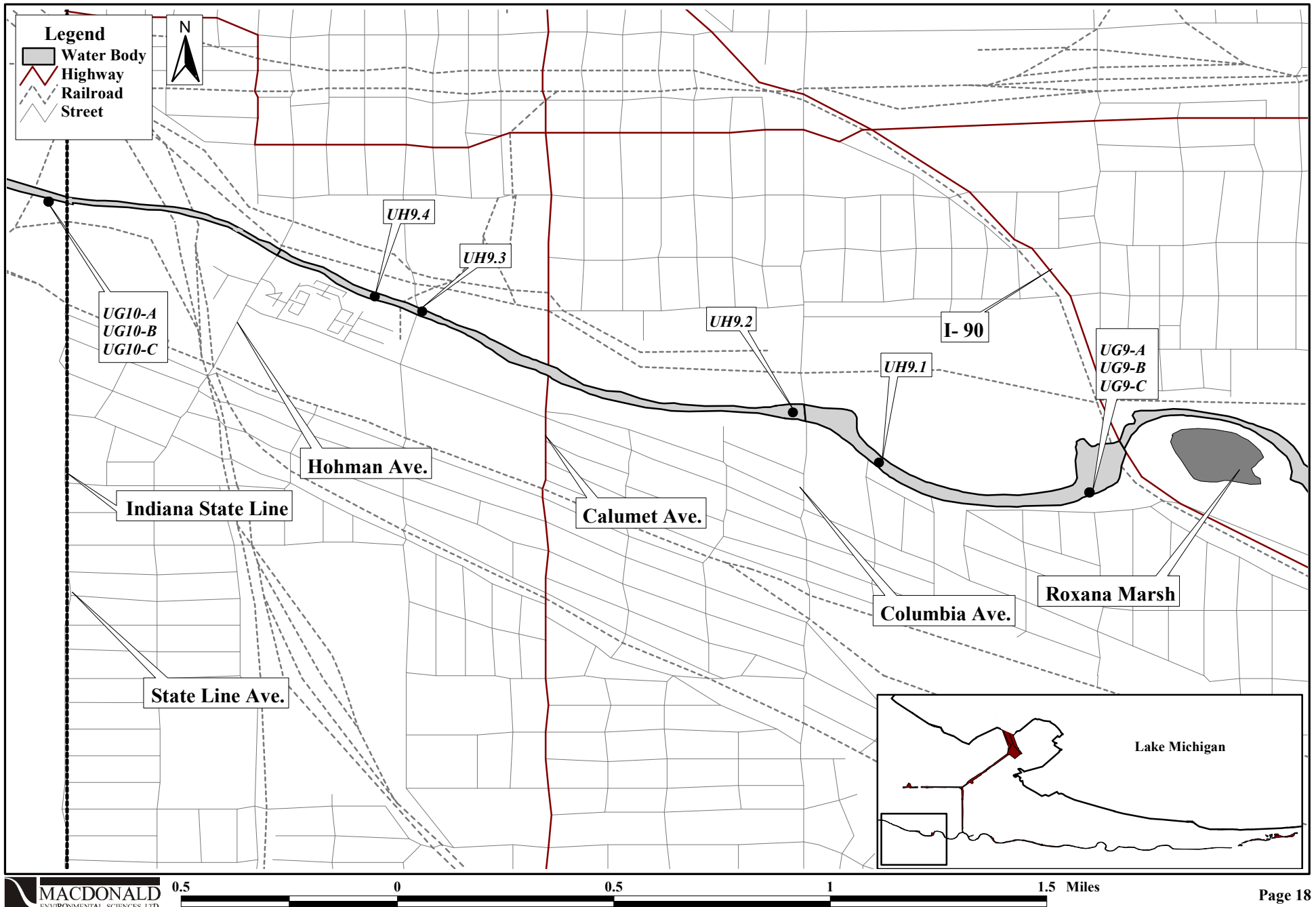




Figure 4.16. Location of sediment sampling stations for HNTB (1990).

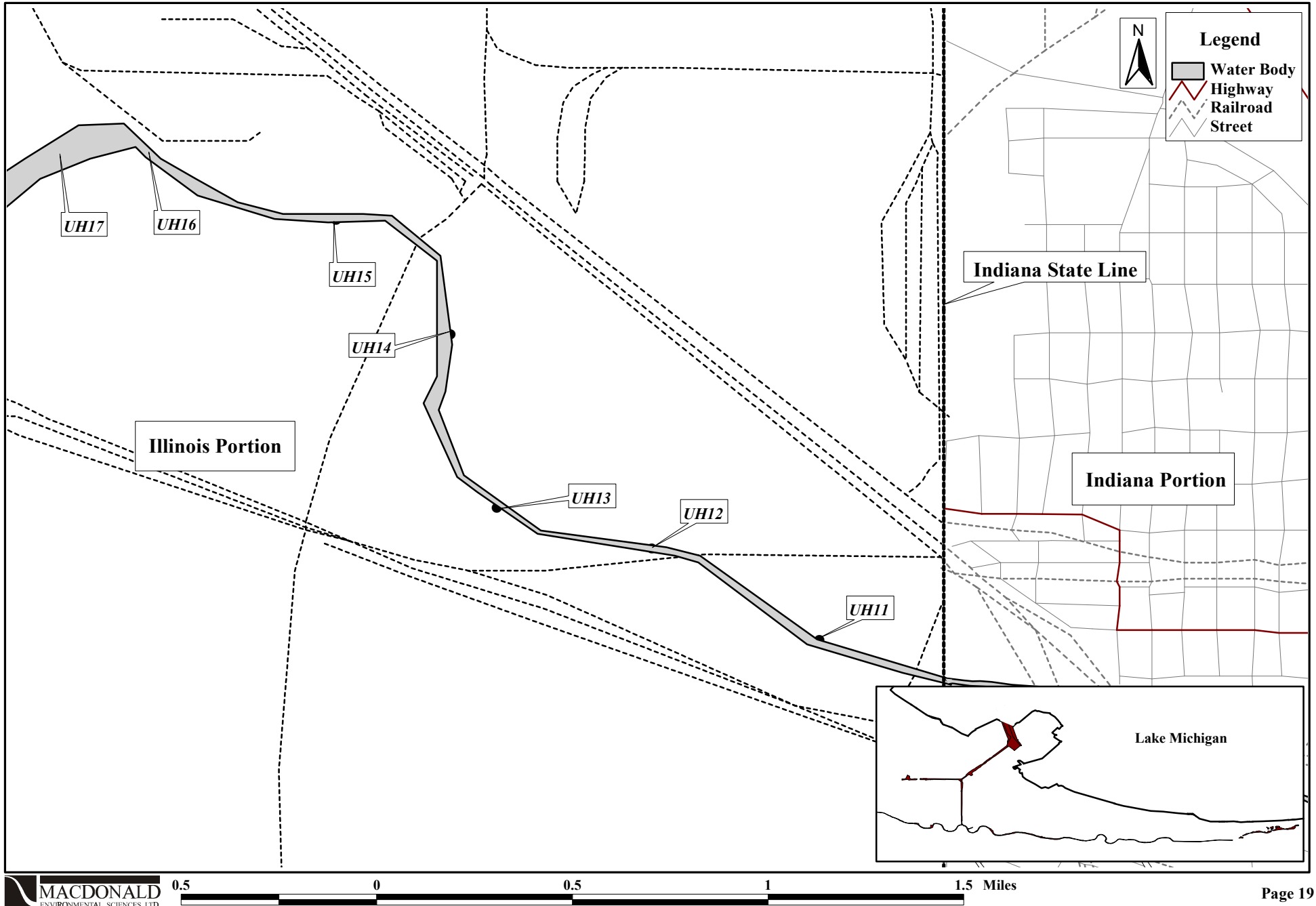


Figure 4.17. Location of sediment sampling stations for HNTB (1991).

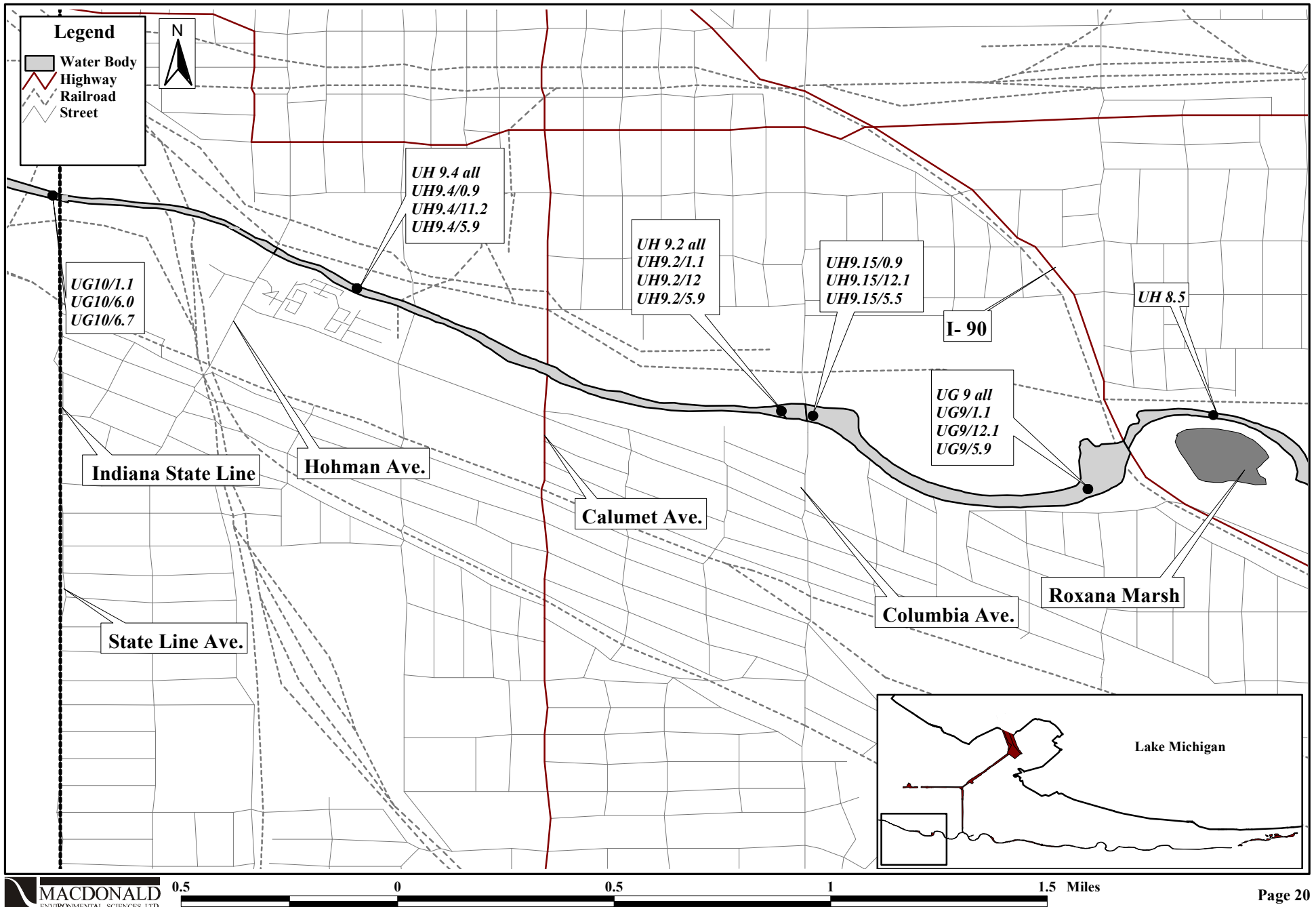


Figure 4.18. Location of sediment sampling stations for USEPA (1990).

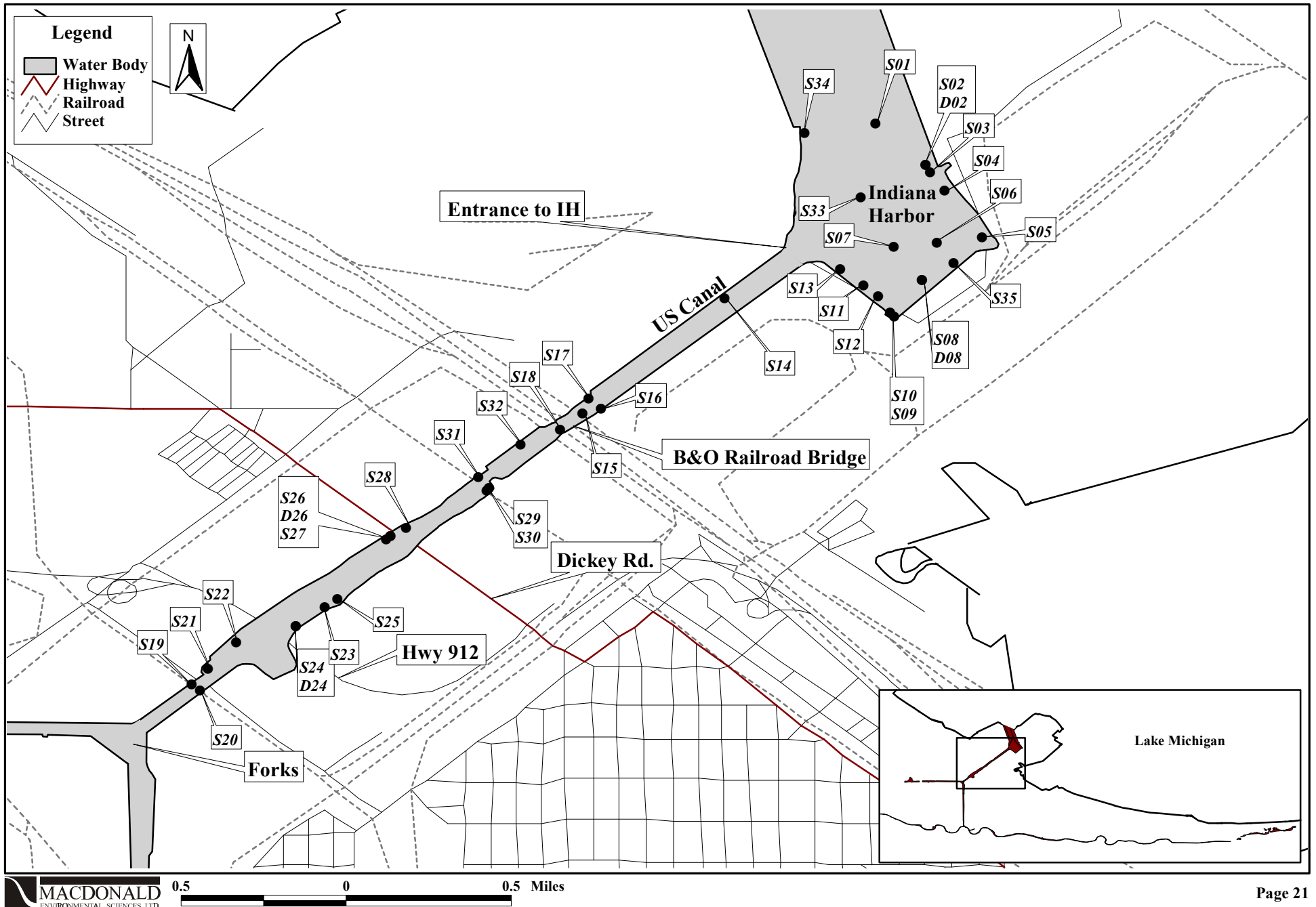


Figure 4.19. Location of sediment sampling stations for USEPA (1996b).

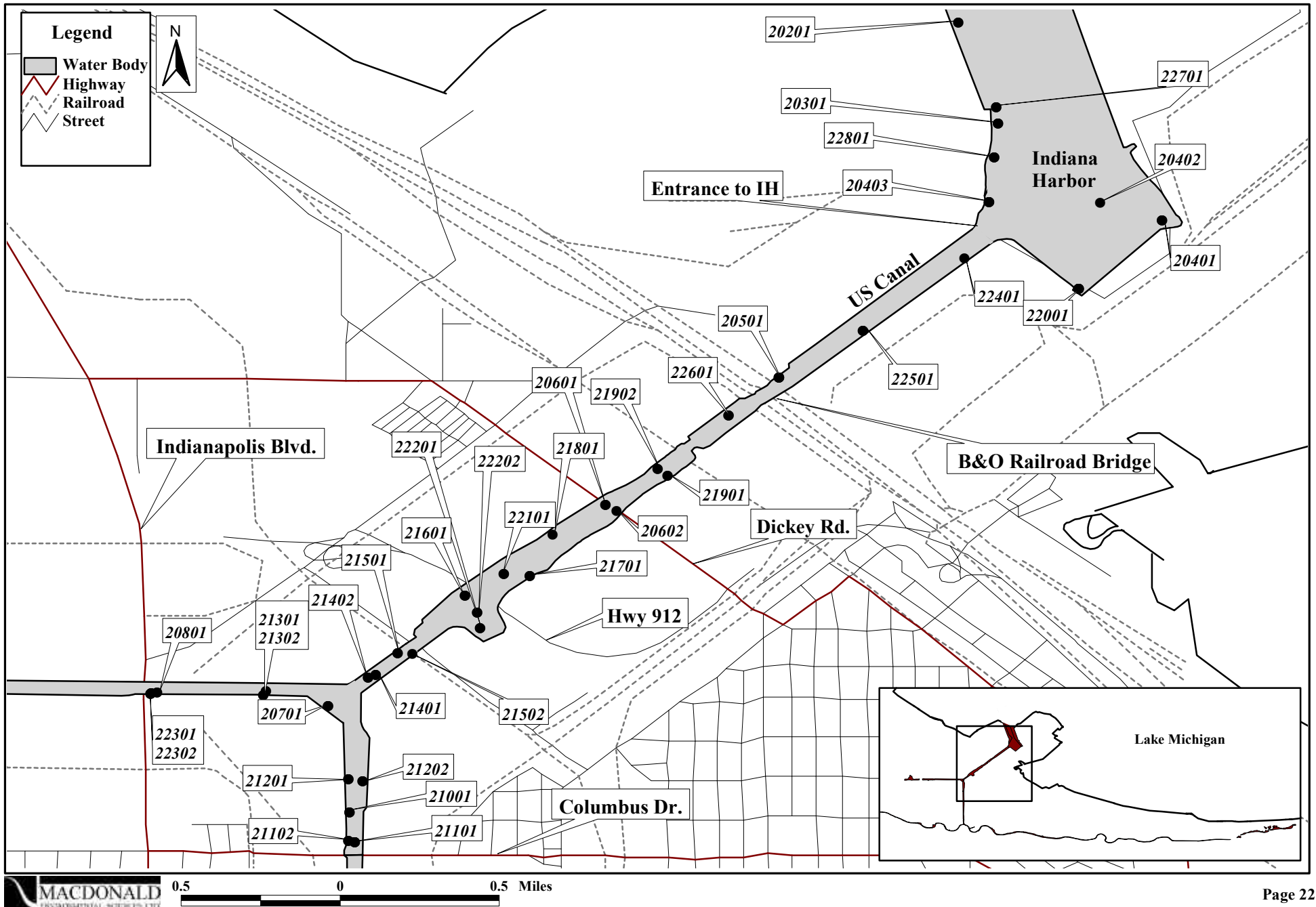


Figure 4.20. Location of sediment sampling stations for Floyd-Browne (1993).

