
Figures

Chapter 13 - Indiana Harbor

Figure 13.1a. Location of sampling stations for surficial sediment chemistry in the IH.

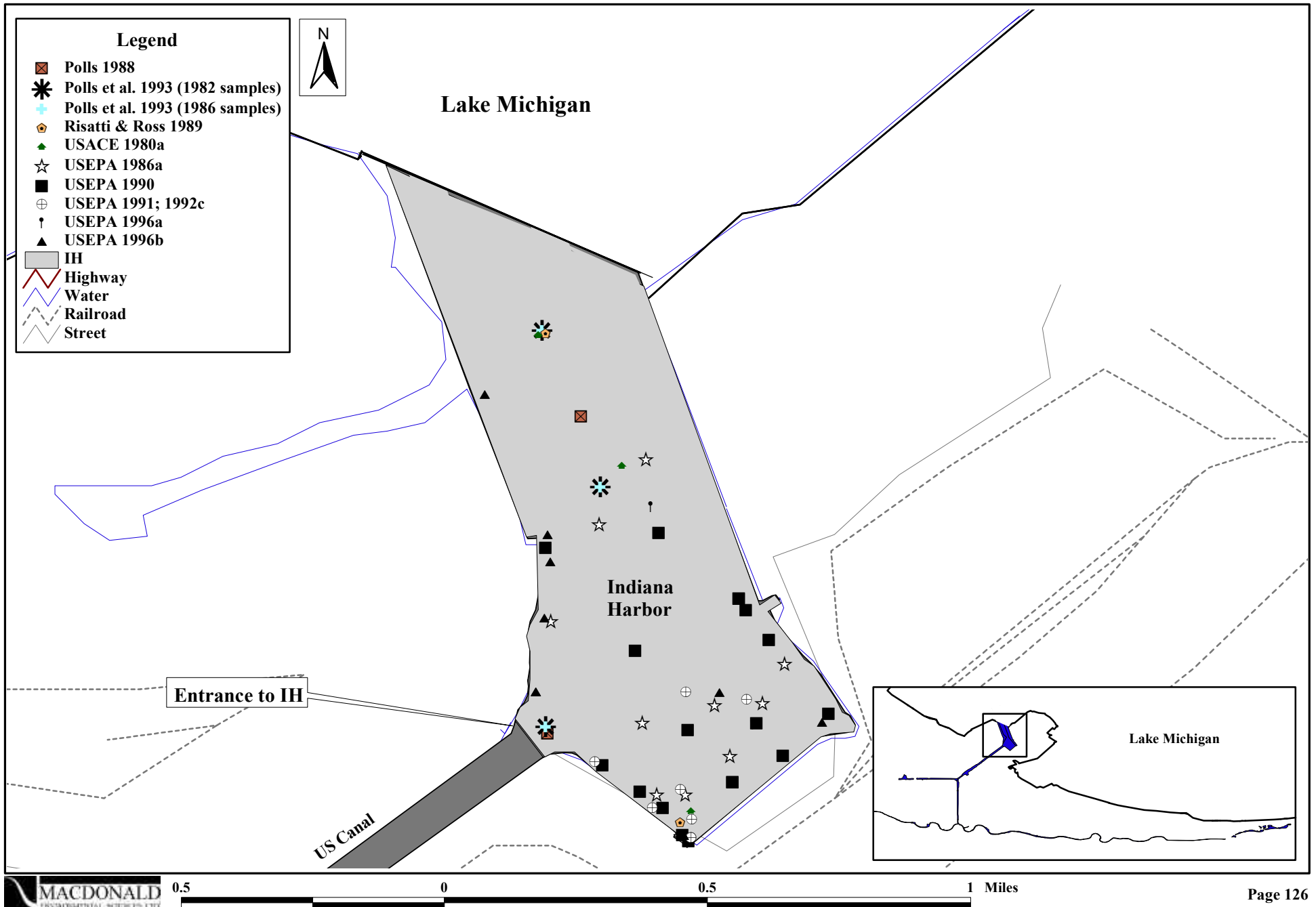


Figure 13.1b. Location of sampling stations for surficial sediment chemistry within the nearshore areas of Lake Michigan.

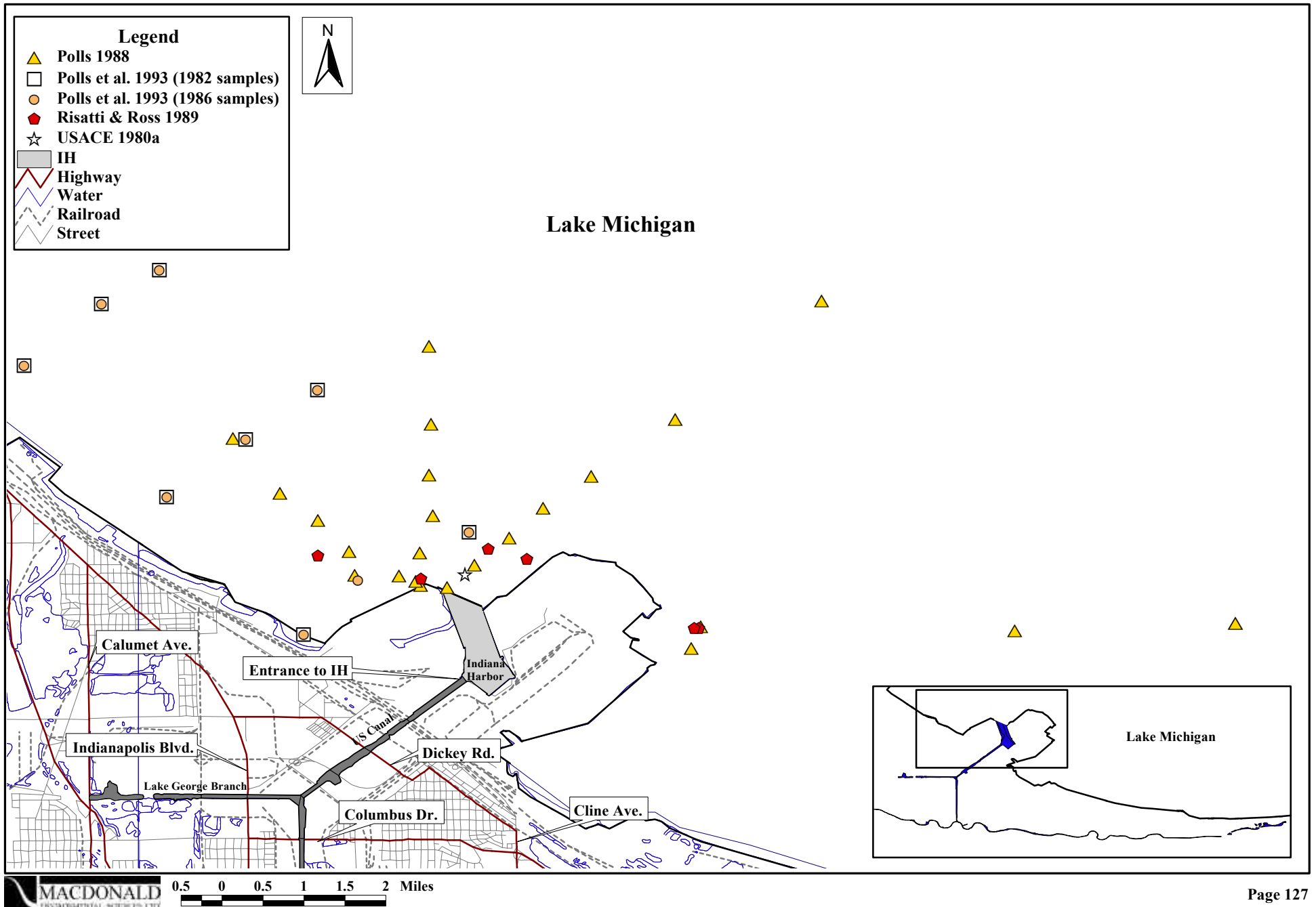


Figure 13.2. Location of sampling stations for sub-surface sediment chemistry in the IH and nearshore areas of Lake Michigan.

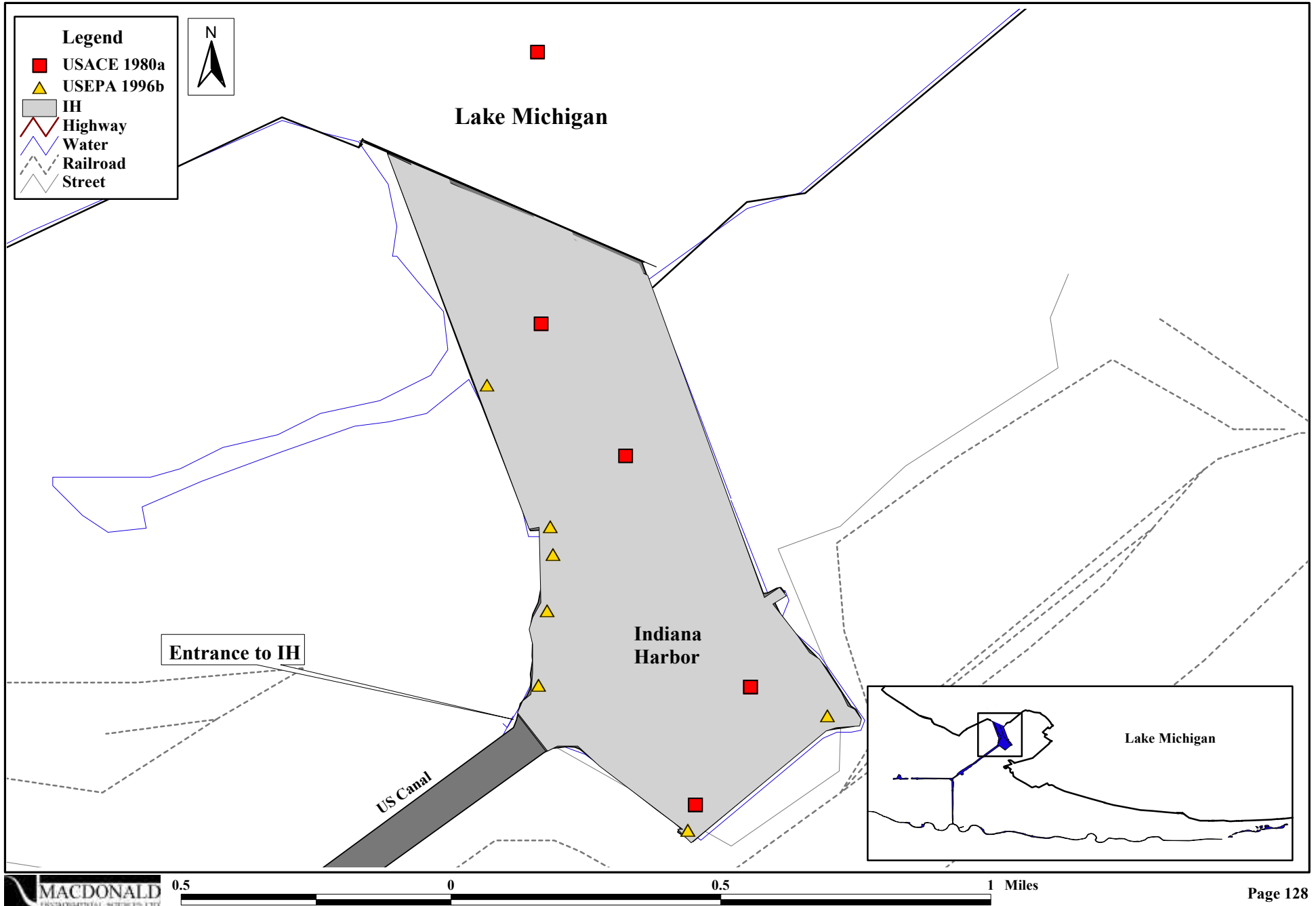


Figure 13.3. Location of sampling stations for sediment toxicity testing in the IH and nearshore areas of Lake Michigan.

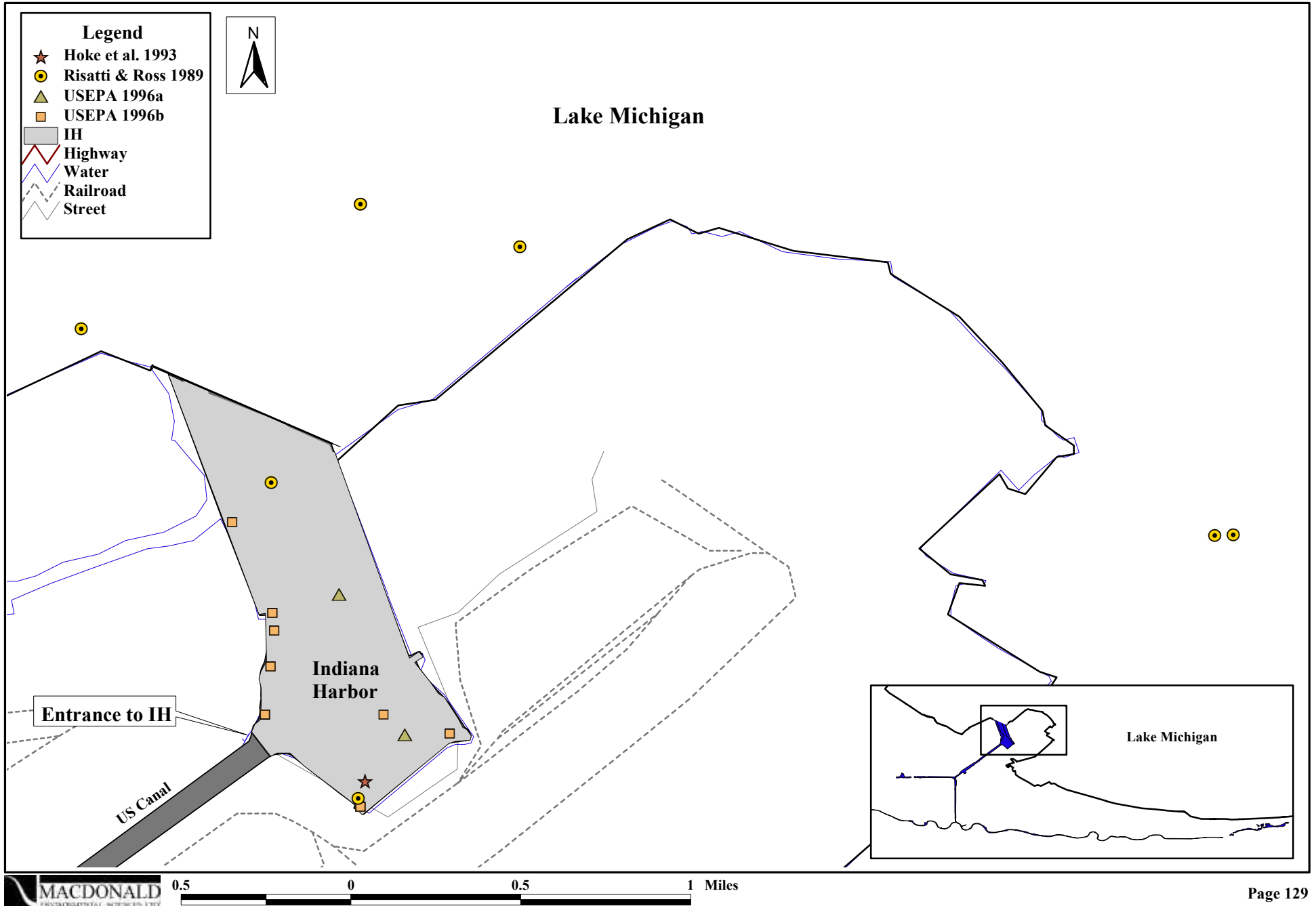


Figure 13.4a. Areal extent of altered and unaltered benthic invertebrate communities in the IH.

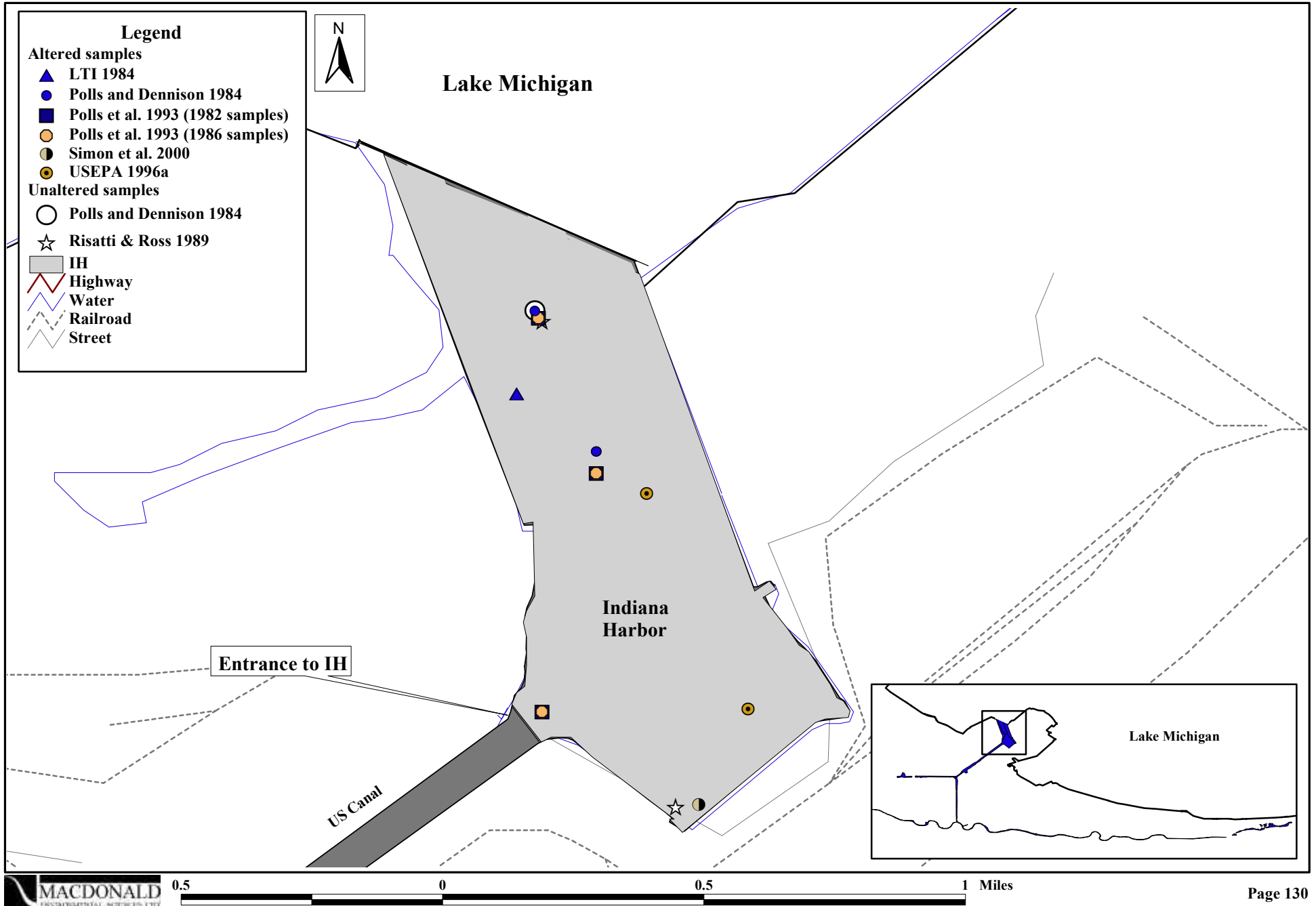


Figure 13.4b. Areal extent of altered benthic invertebrate communities within the nearshore areas of Lake Michigan.

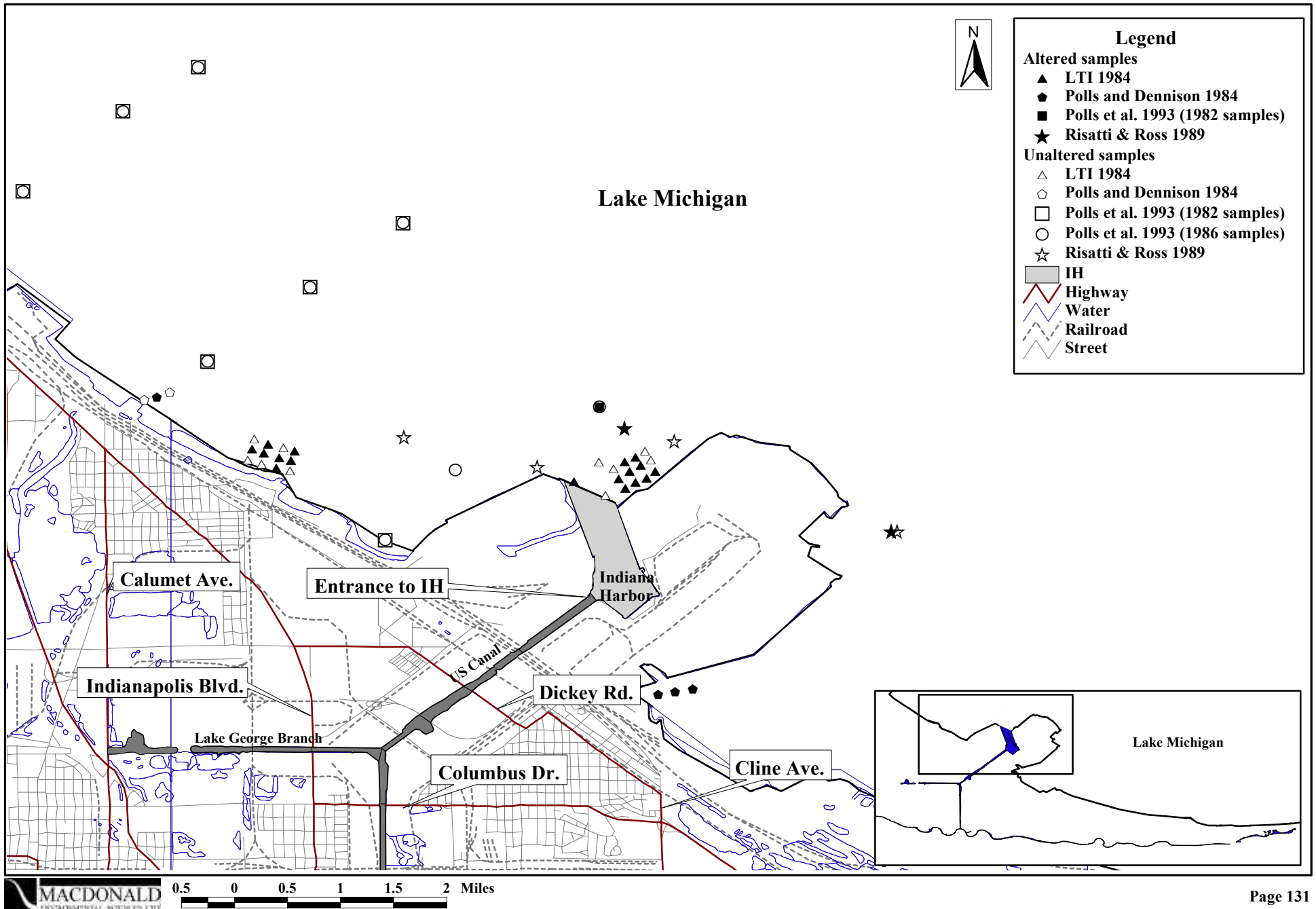


Figure 13.5. Location of sampling stations for tissue chemistry in the IH and nearshore areas of Lake Michigan.

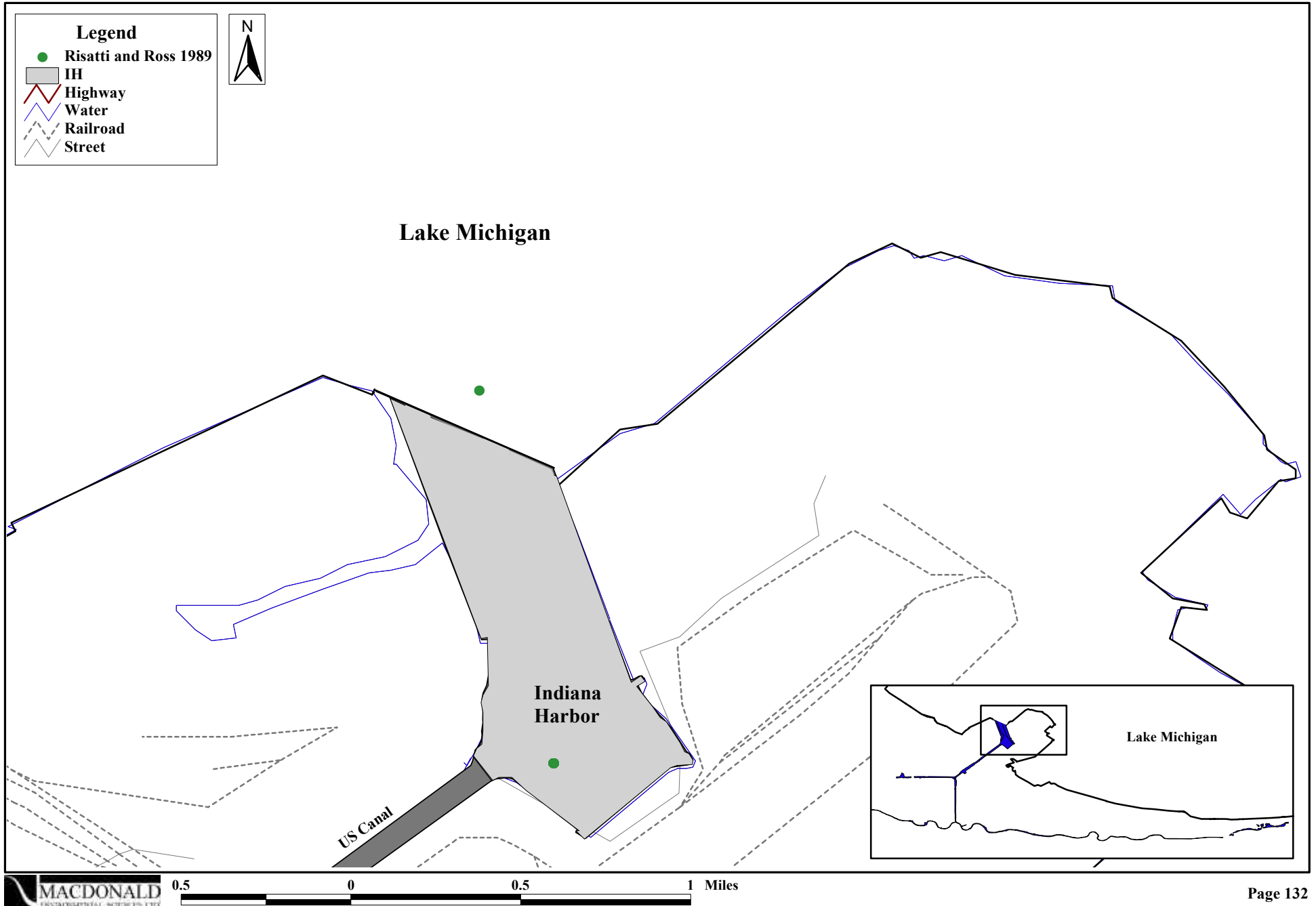


Figure 13.6a. Spatial distribution of mean PEC-Qs in surficial sediments within the IH.

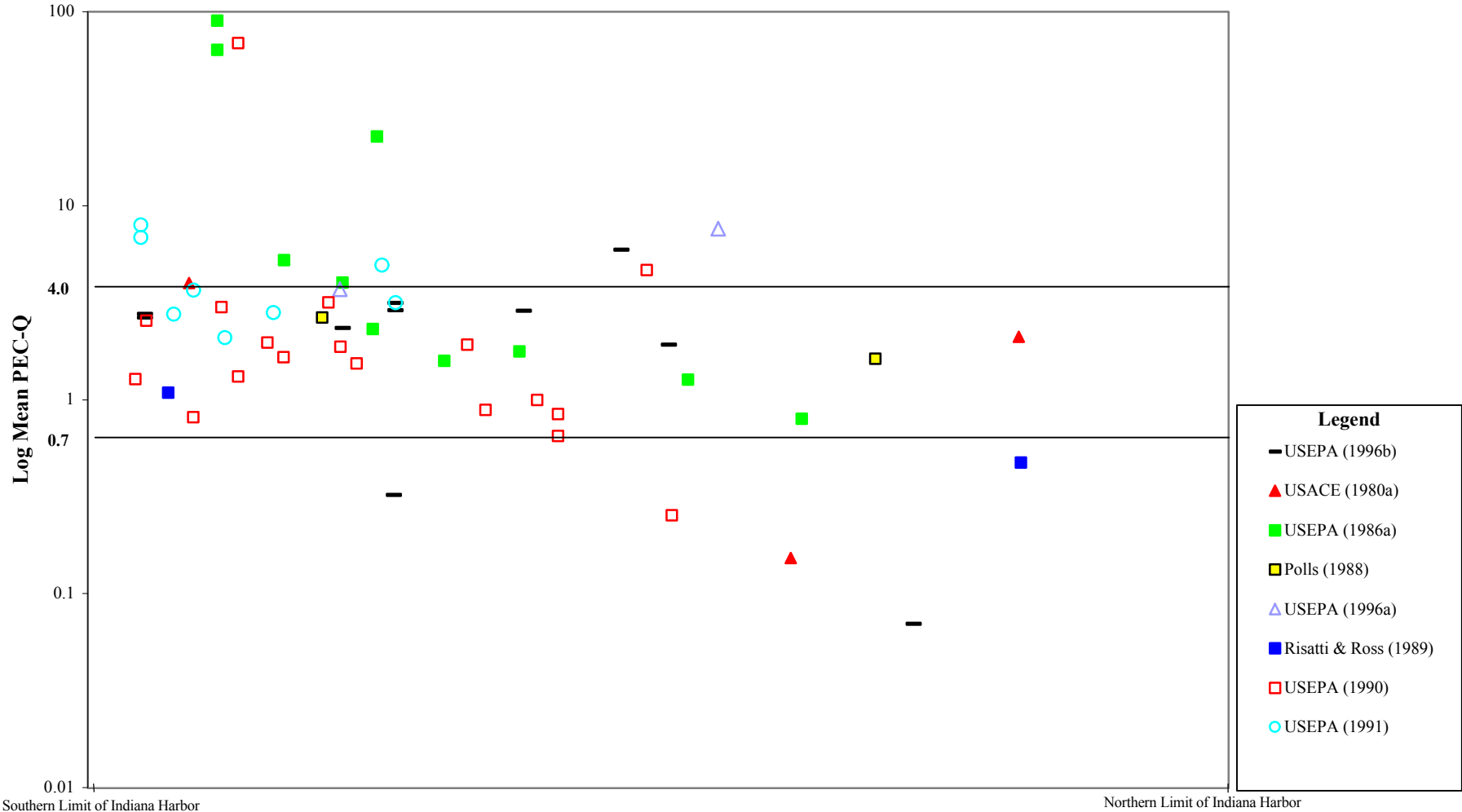


Figure 13.6b. Spatial distribution of mean PEC-Qs in surficial sediments within the eastern section of the nearshore areas of Lake Michigan.

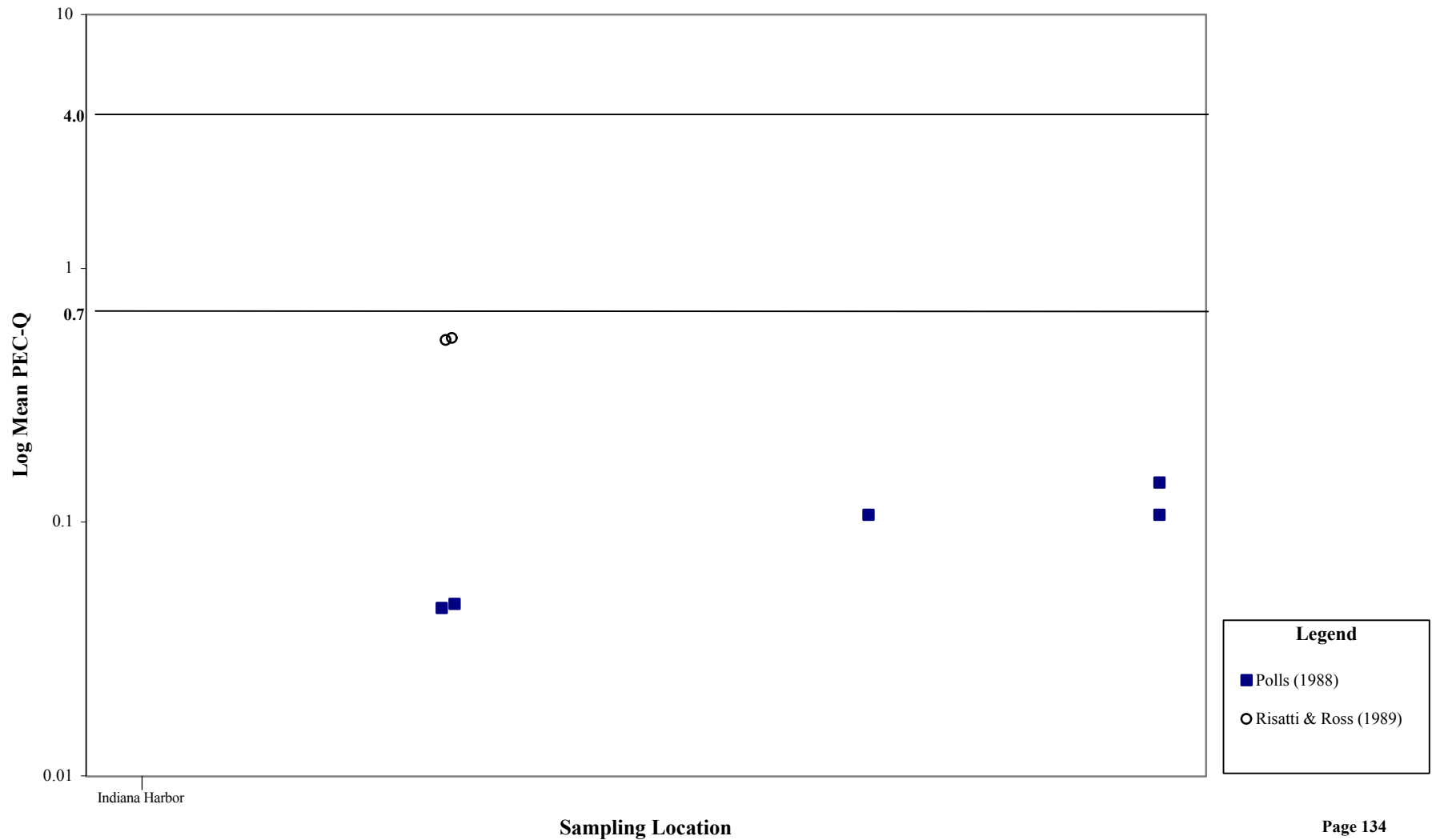


Figure 13.6c. Spatial distribution of mean PEC-Qs in surficial sediment within the northern section of the nearshore areas of Lake Michigan.

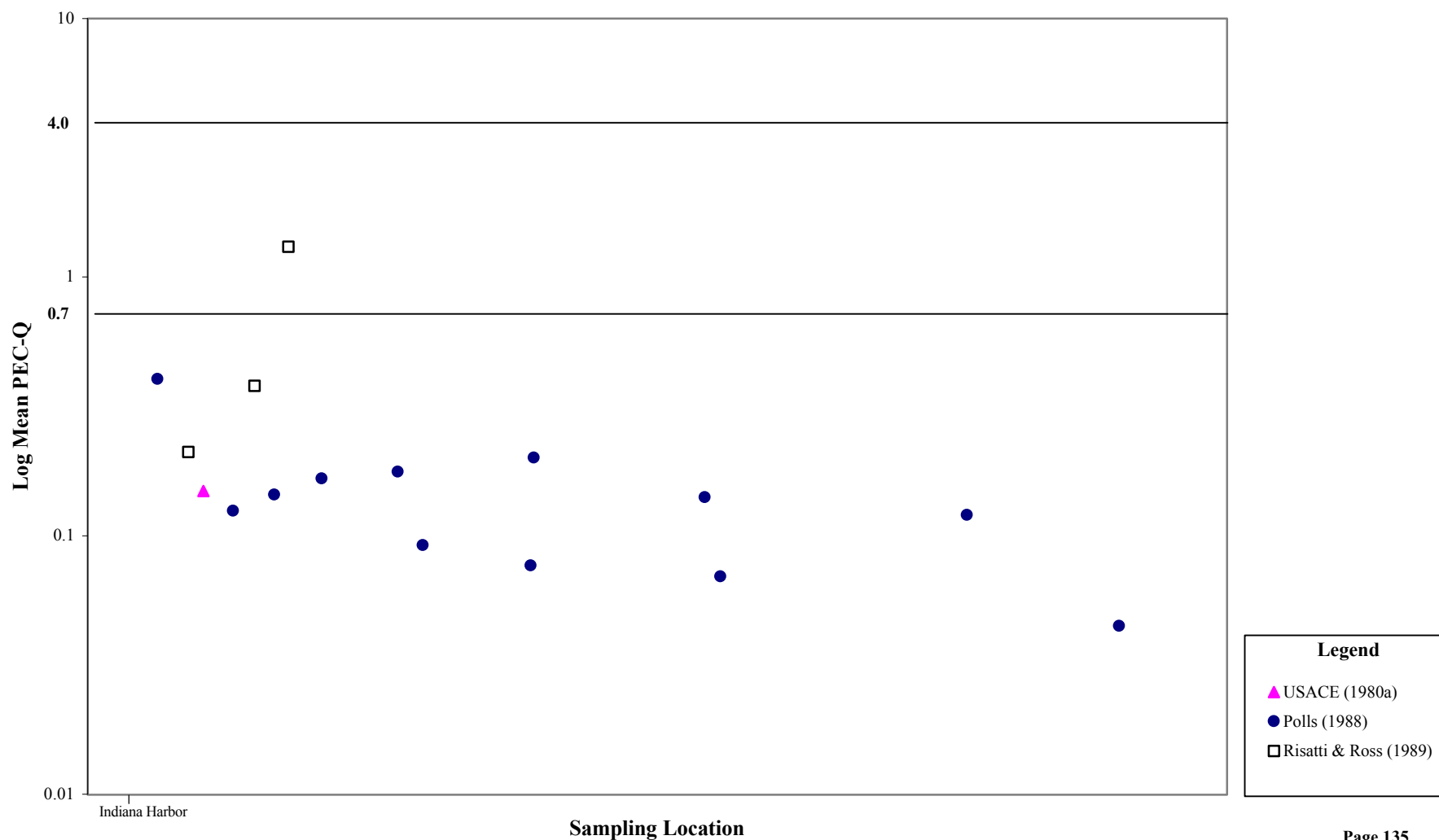


Figure 13.6d. Spatial distribution of mean PEC-Qs in surficial sediments within the western section of the nearshore areas of Lake Michigan.

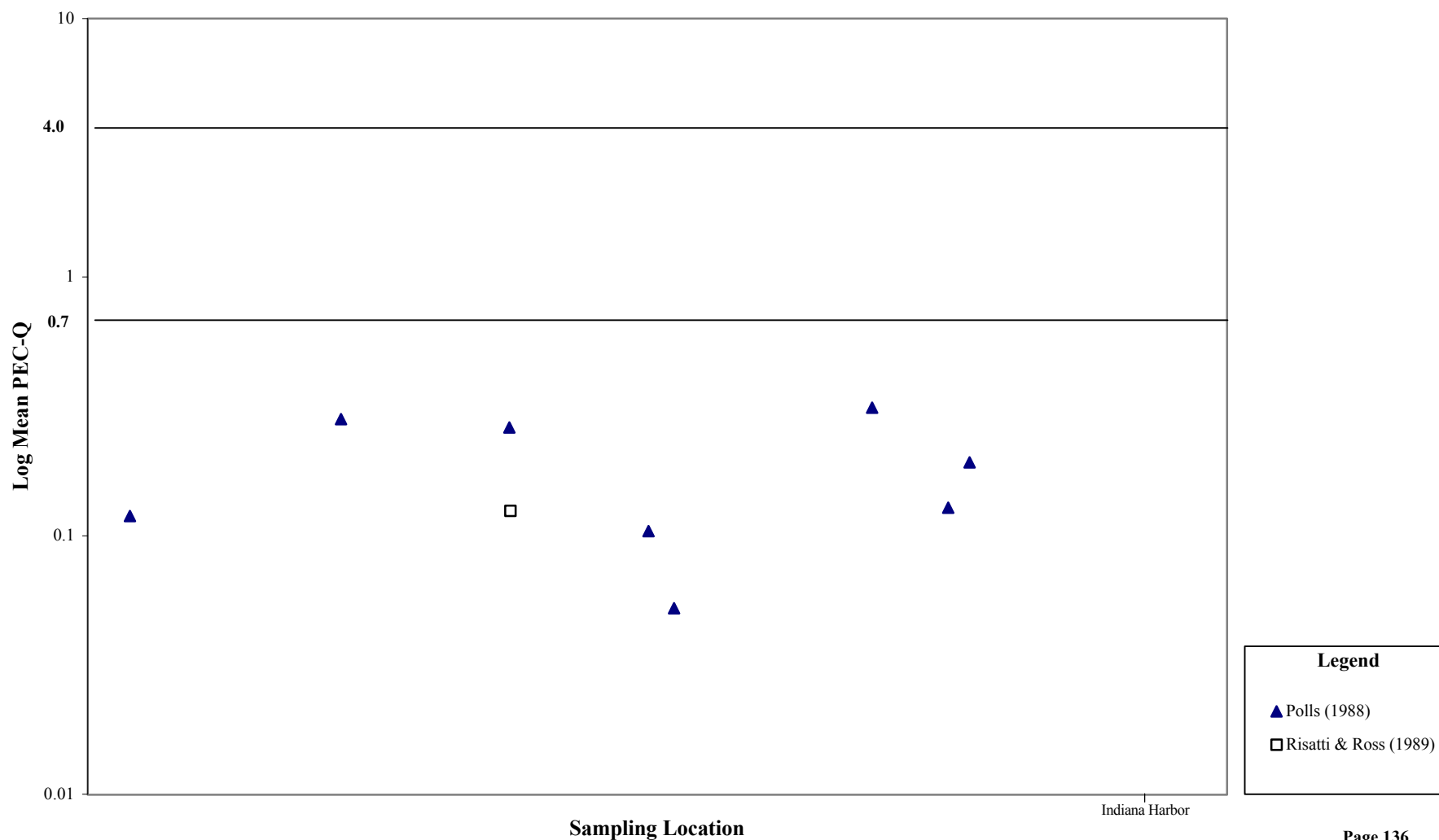


Figure 13.7a. Areal extent of injury to surficial sediments in the IH.

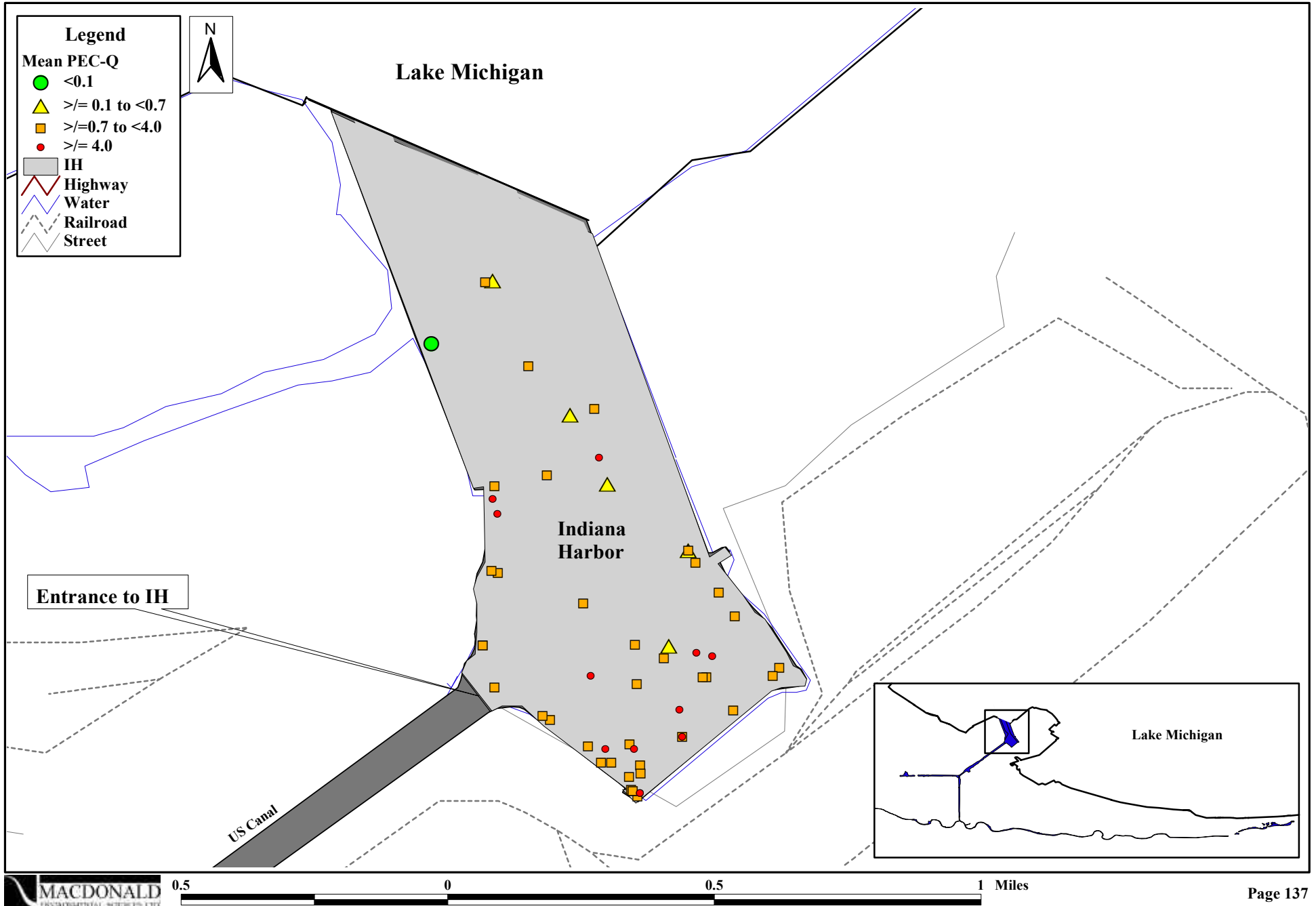


Figure 13.7b. Areal extent of injury to surficial sediments within the nearshore areas of Lake Michigan.

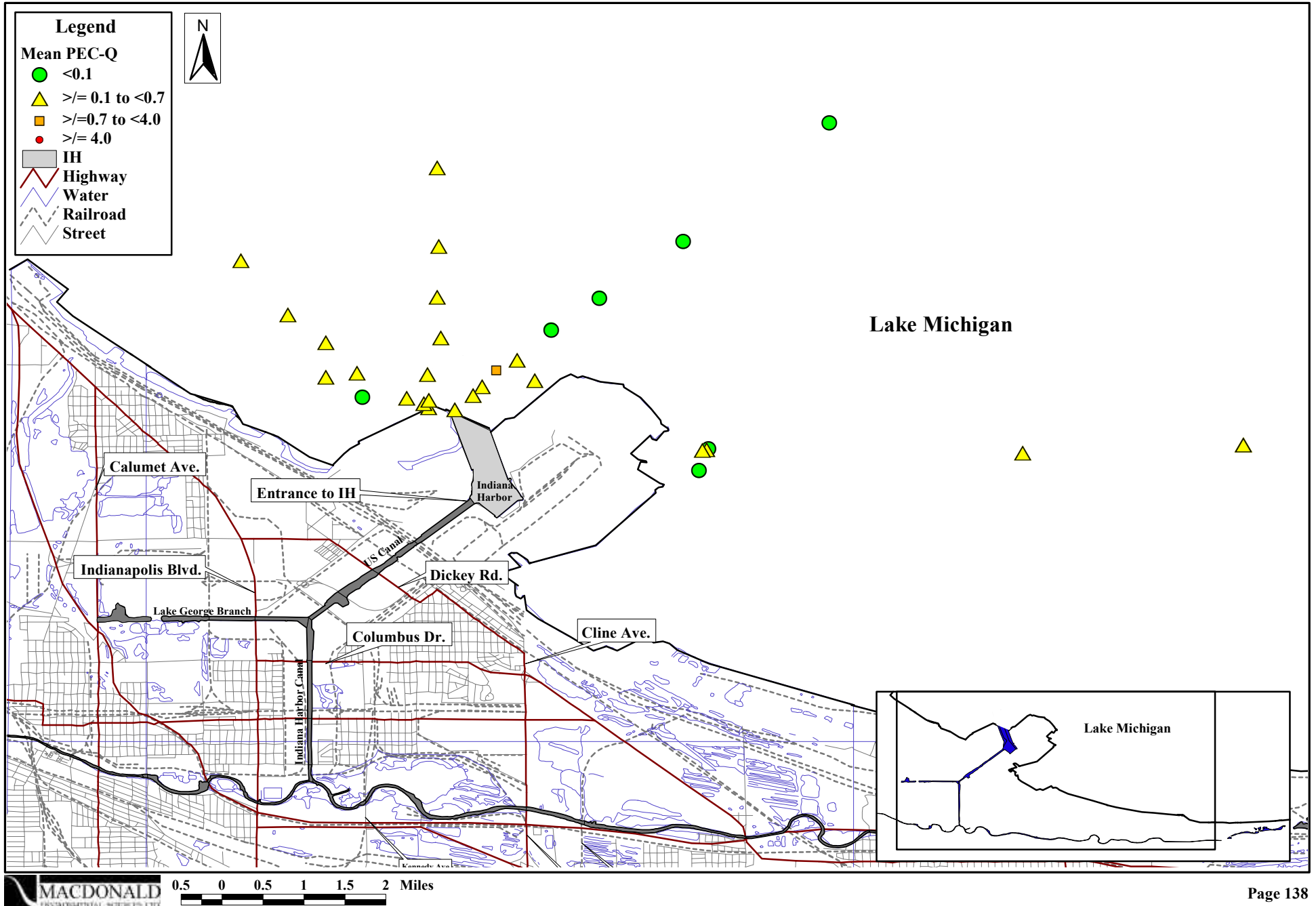


Figure 13.8. Spatial distribution of mean PEC-Qs in sub-surface sediments within the IH and nearshore areas of Lake Michigan.

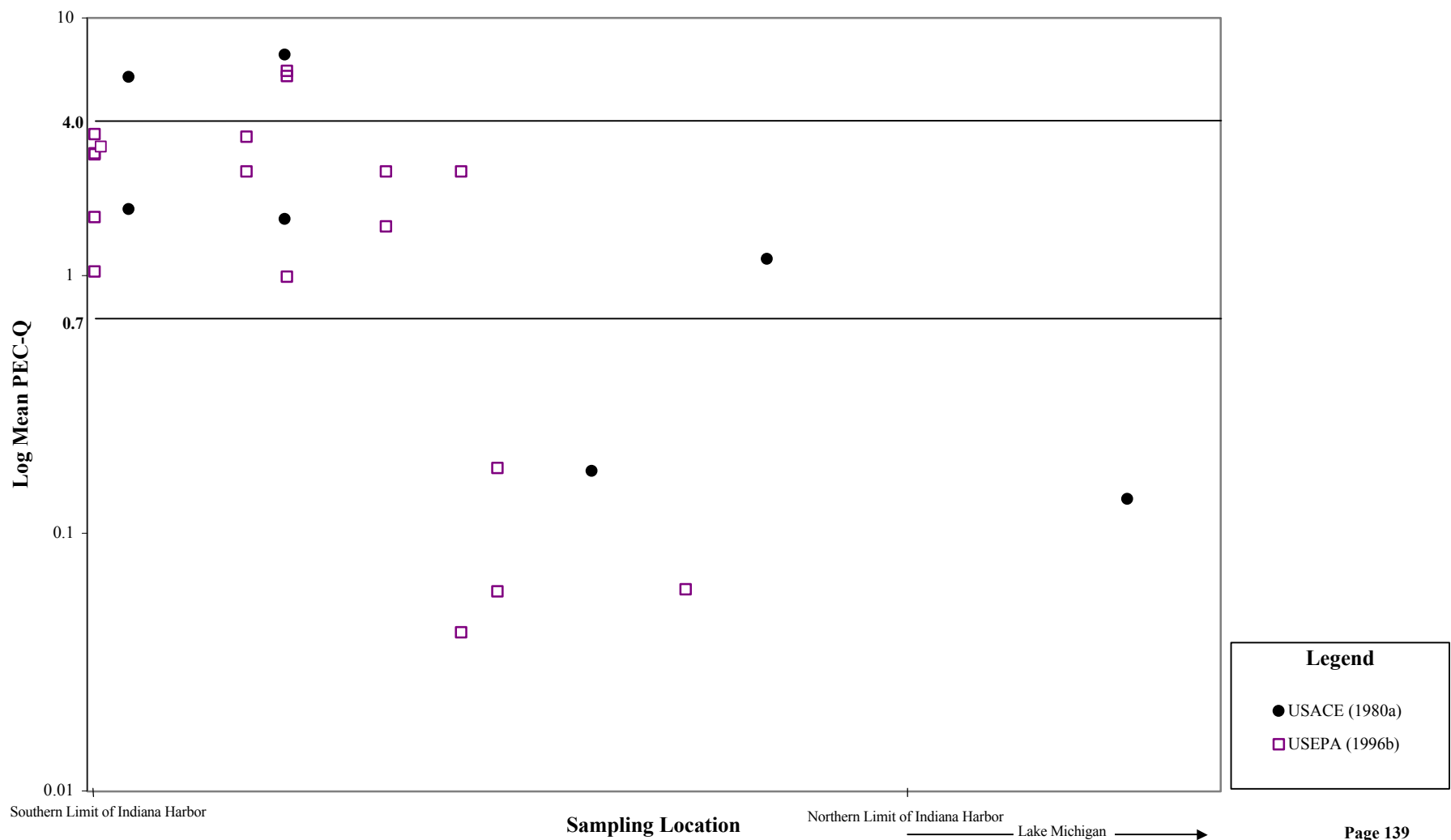


Figure 13.9. Areal extent of injury to sub-surface sediments in the IH and nearshore areas of Lake Michigan.

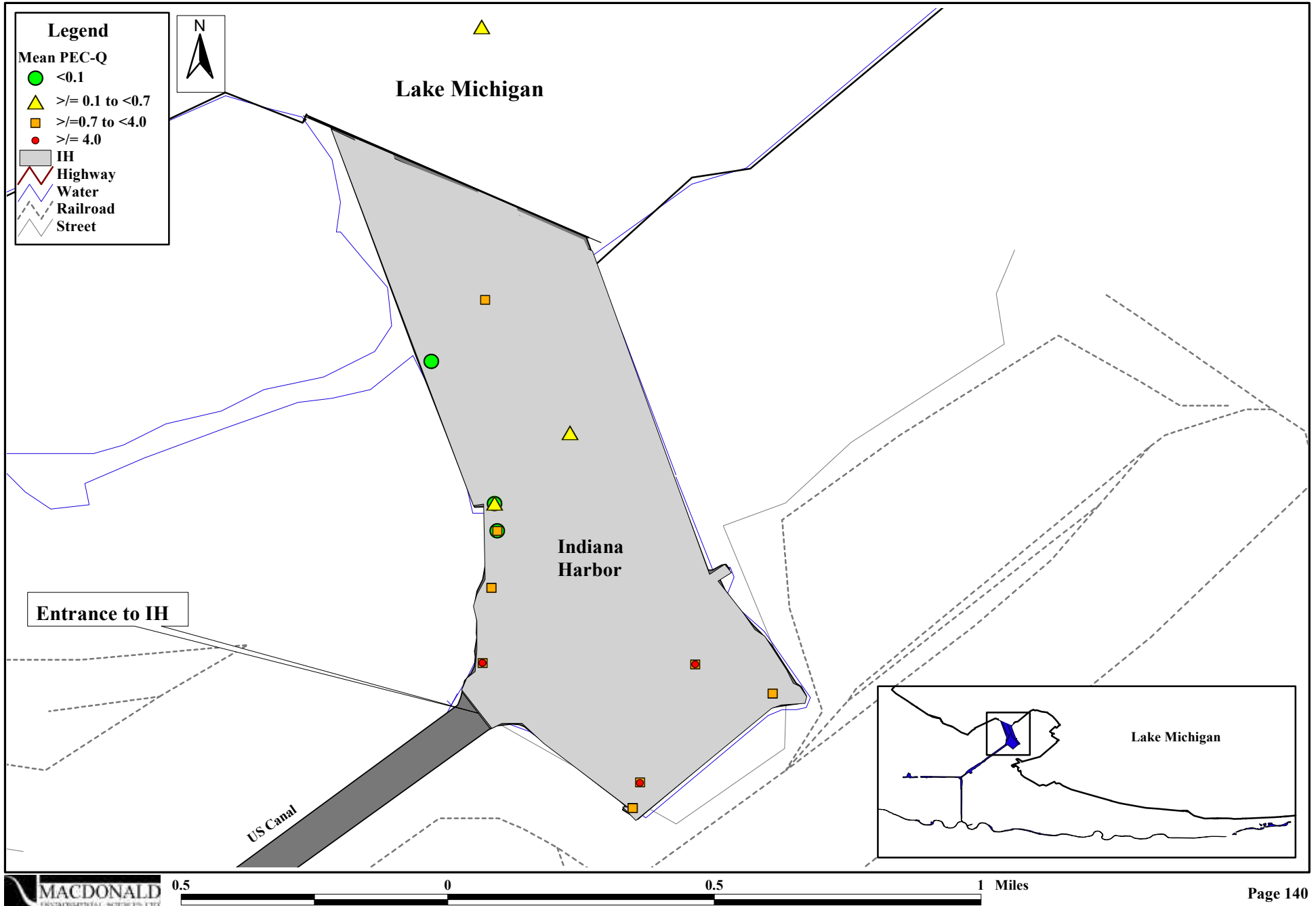


Figure 13.10. Areal extent of sediment toxicity in the IH and nearshore areas of Lake Michigan.

