
Figures

Chapter 10 - Indiana Harbor Canal

Figure 10.1. Location of sampling stations for surficial sediment chemistry in the IHC.

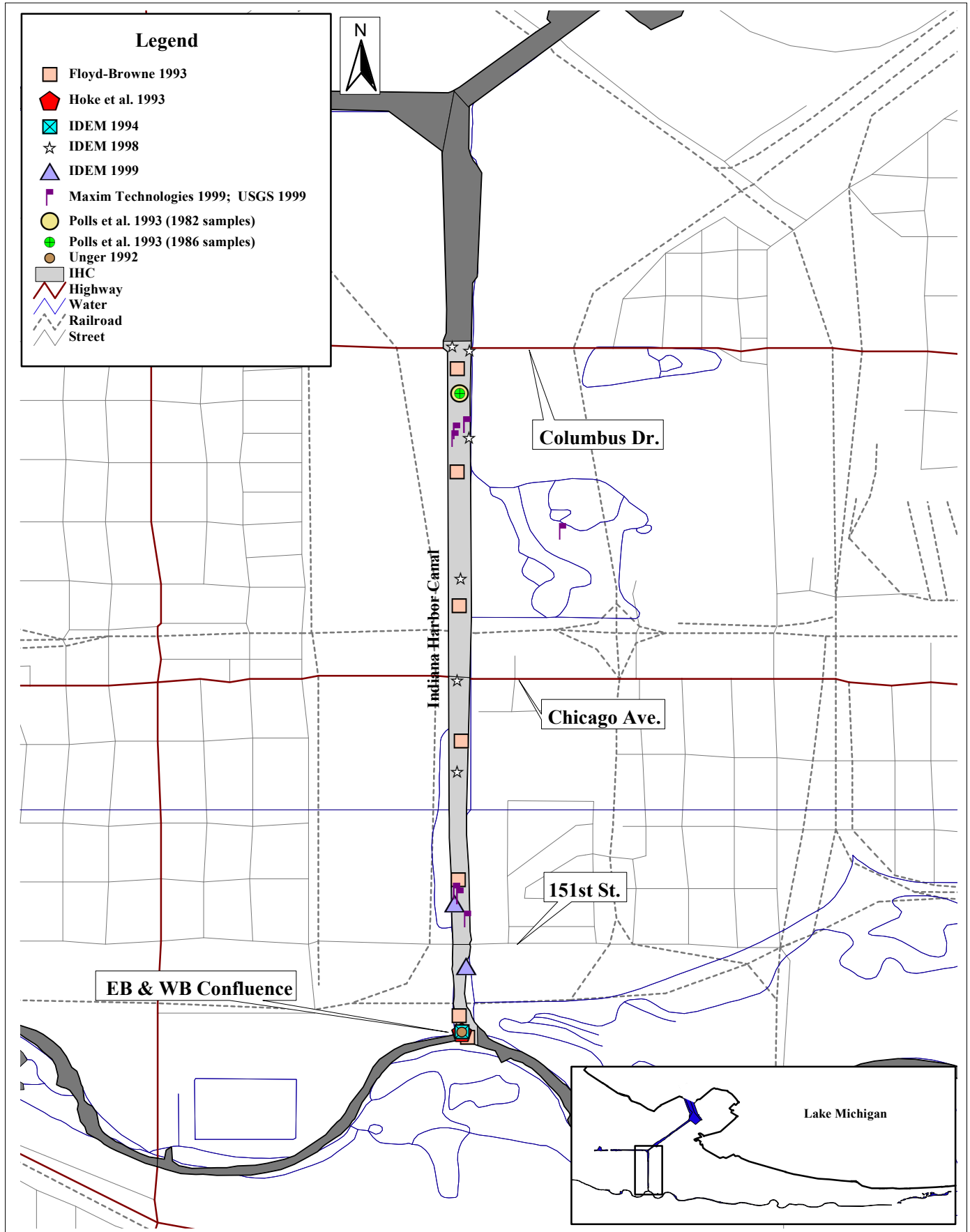


Figure 10.2. Location of sampling stations for sub-surface sediment chemistry in the IHC.

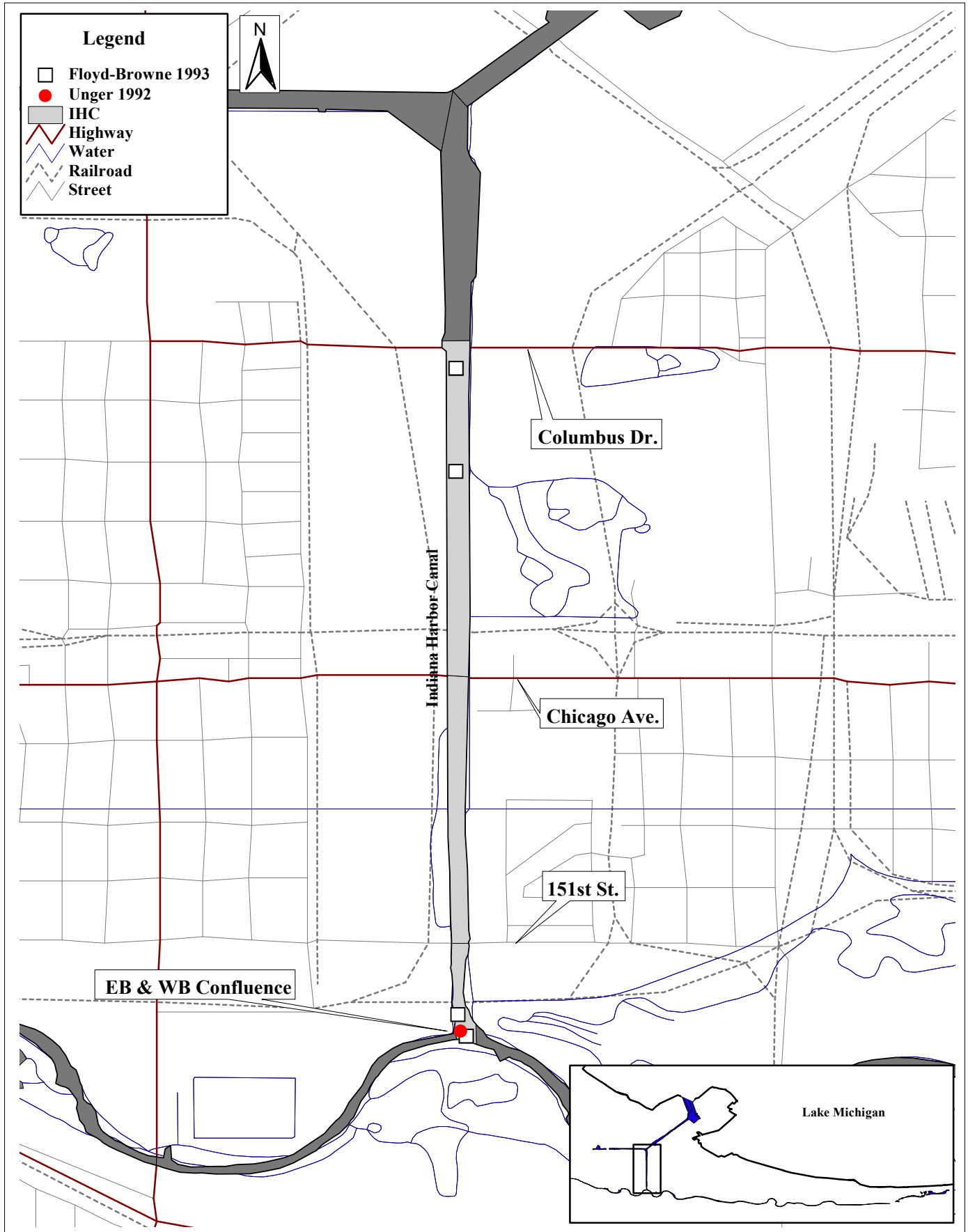


Figure 10.3. Location of sampling stations for sediment toxicity testing in the IHC.

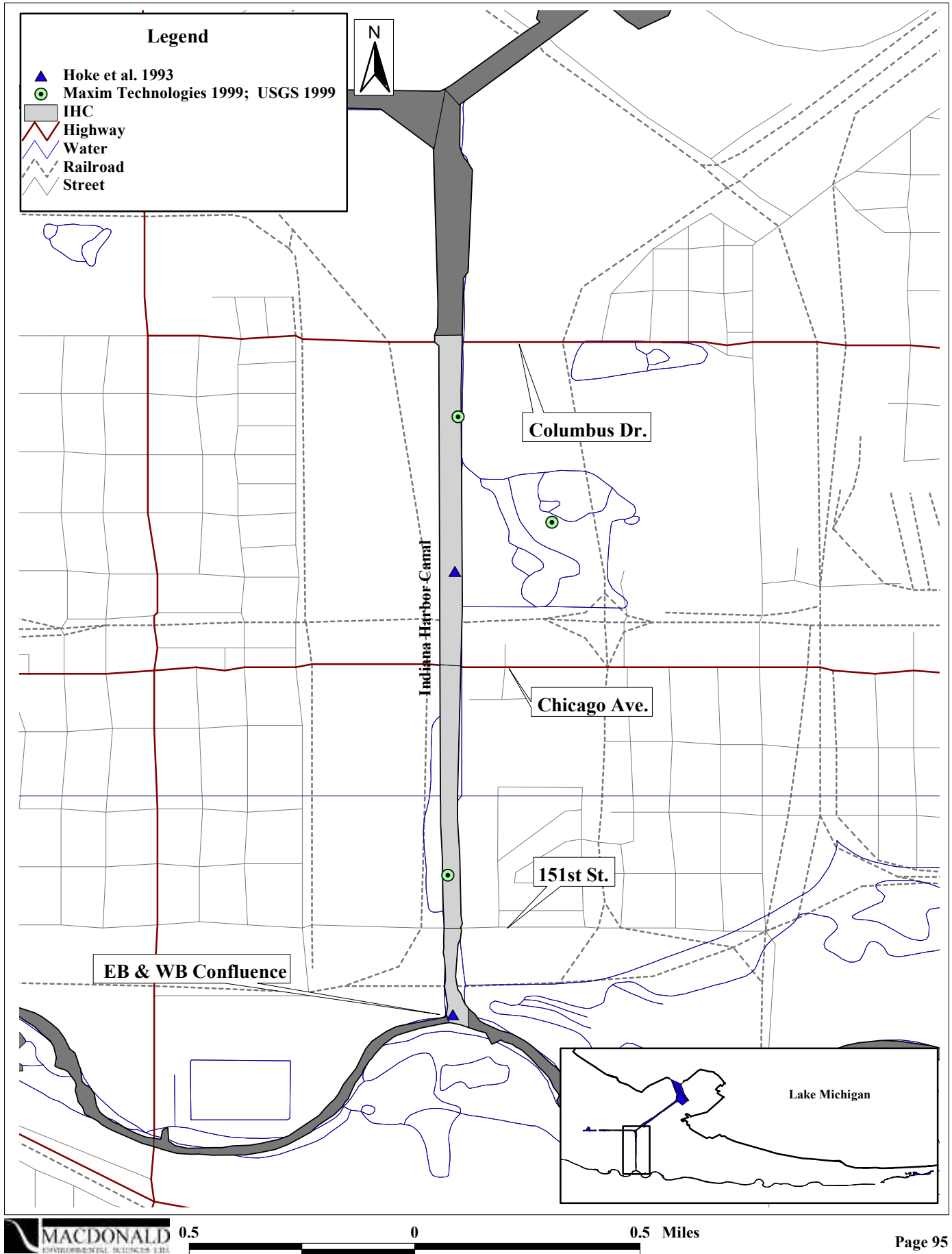


Figure 10.4. Areal extent of altered benthic invertebrate communities in the IHC.

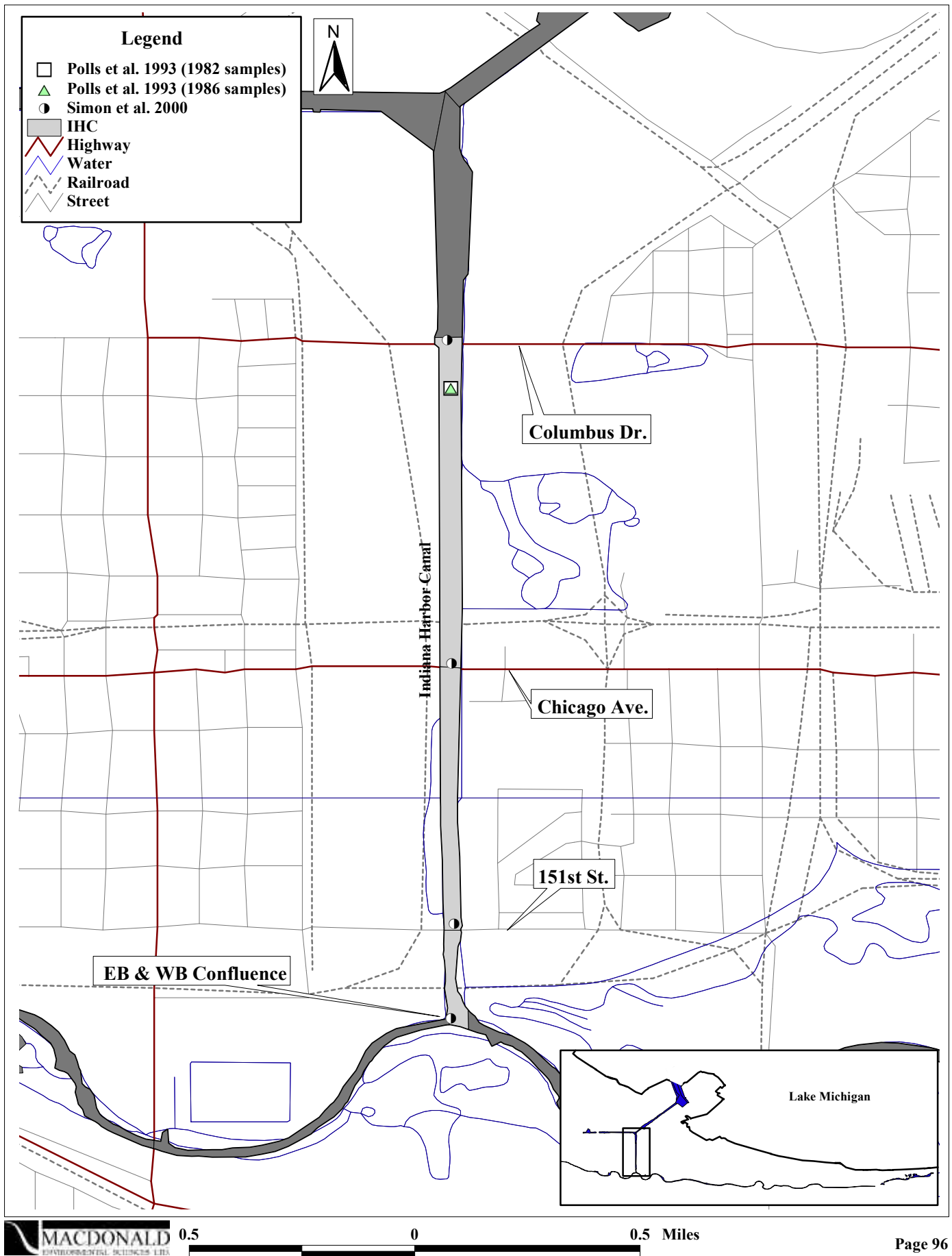


Figure 10.5. Location of sampling stations for tissue chemistry in the IHC.

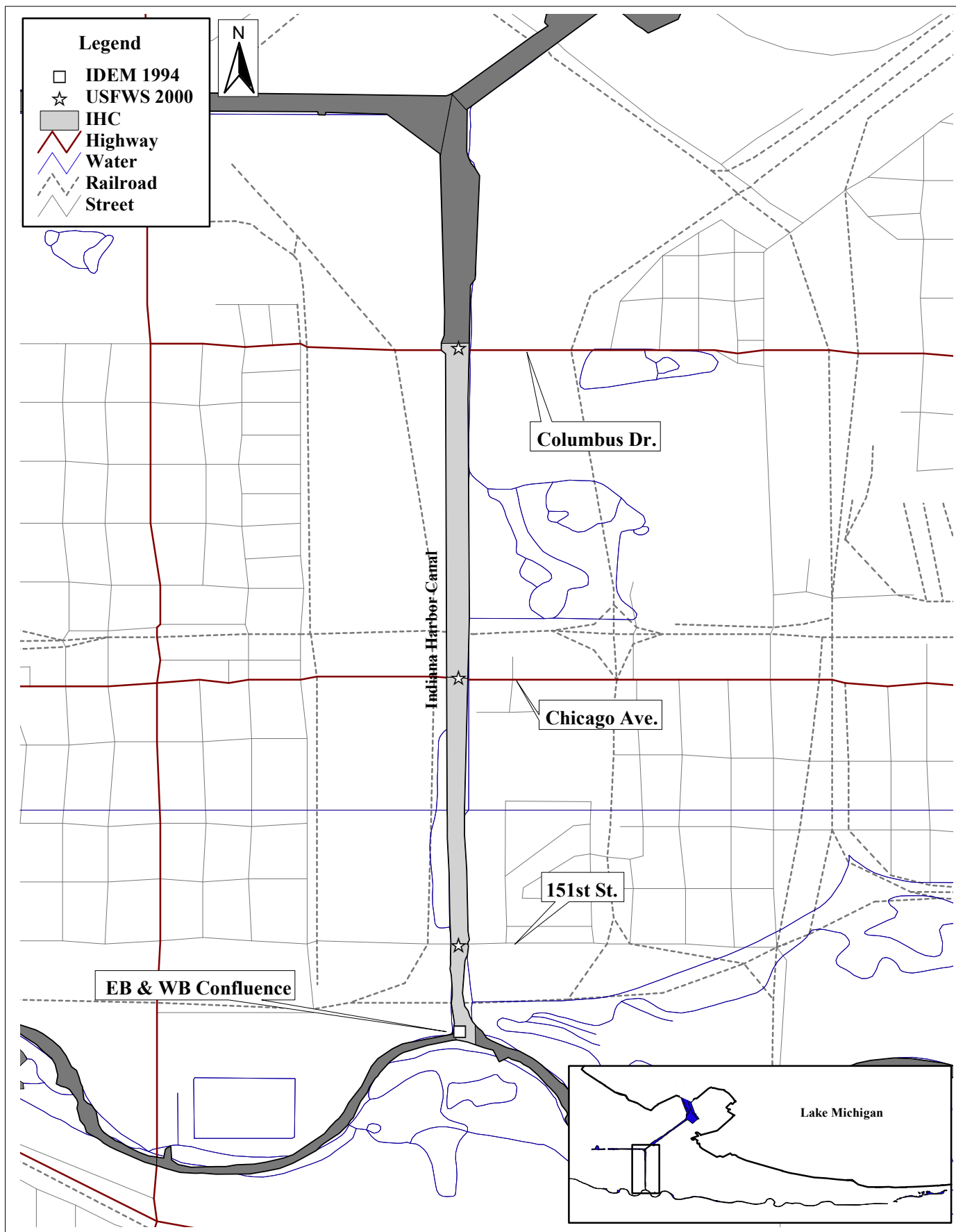


Figure 10.6. Spatial distribution of mean PEC-Qs in surficial sediments within the IHC.

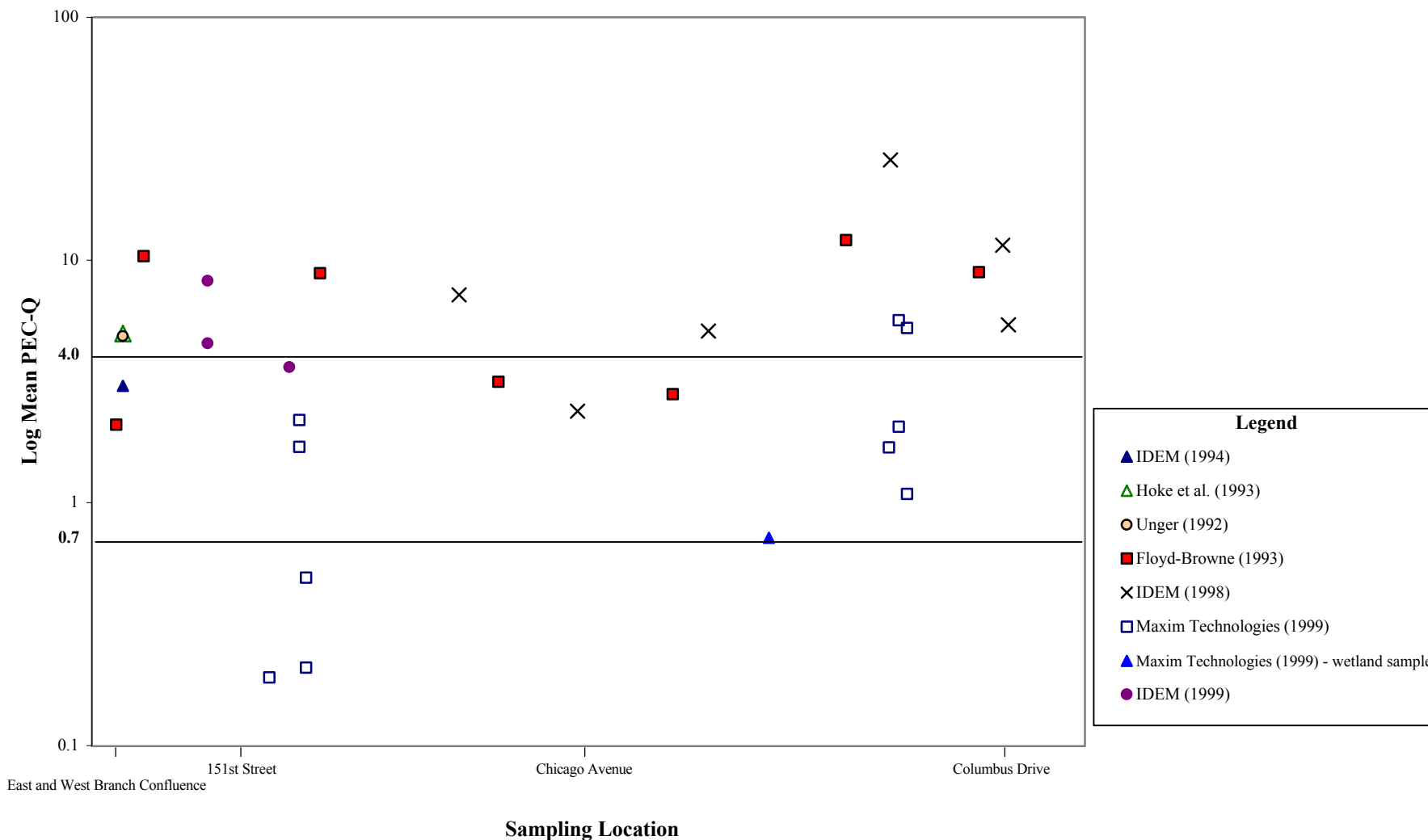


Figure 10.7. Areal extent of injury to surficial sediments in the IHC.

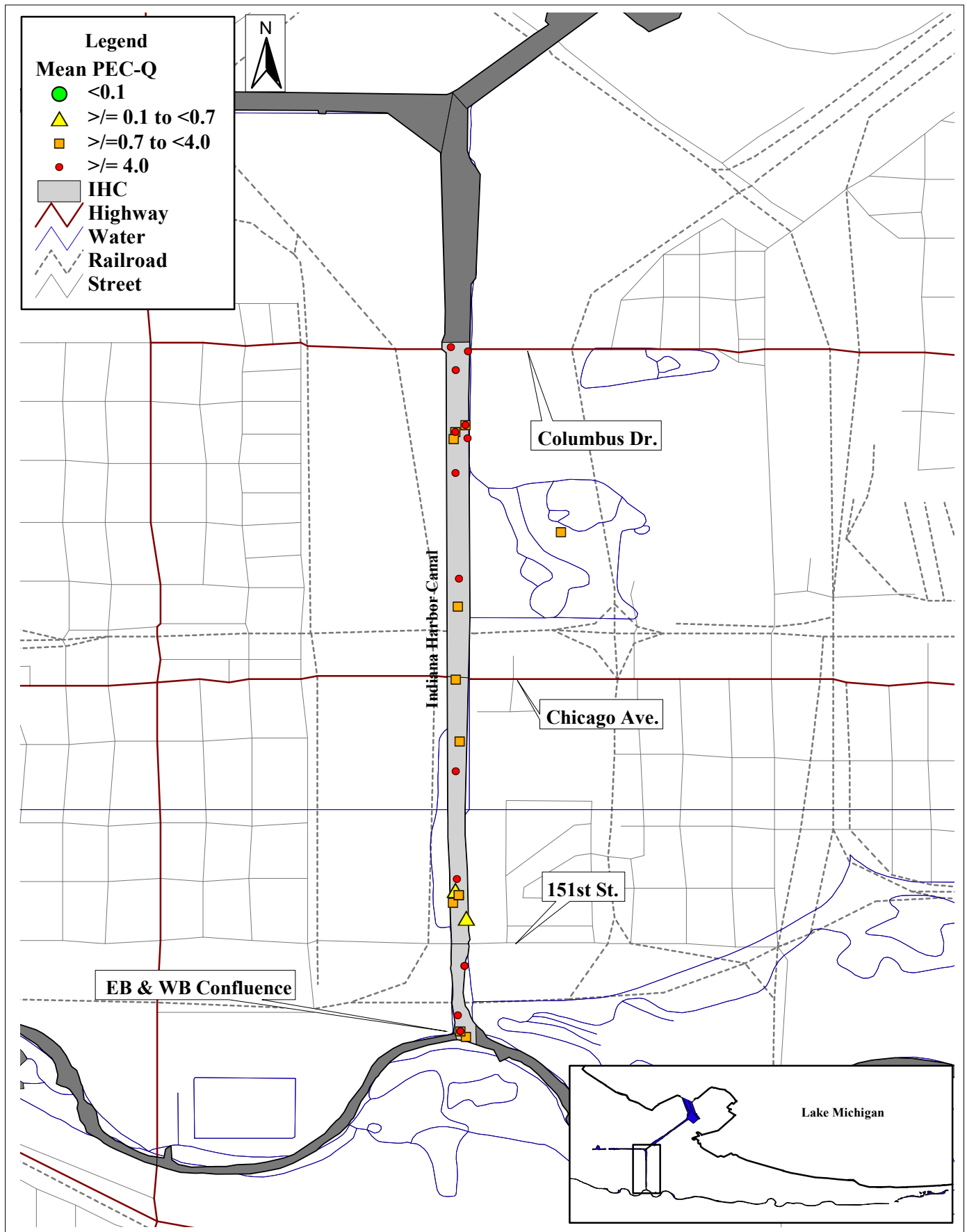


Figure 10.8. Spatial distribution of mean PEC-Qs in sub-surface sediments within the IHC.



Figure 10.9. Areal extent of injury to sub-surface sediments in the IHC.

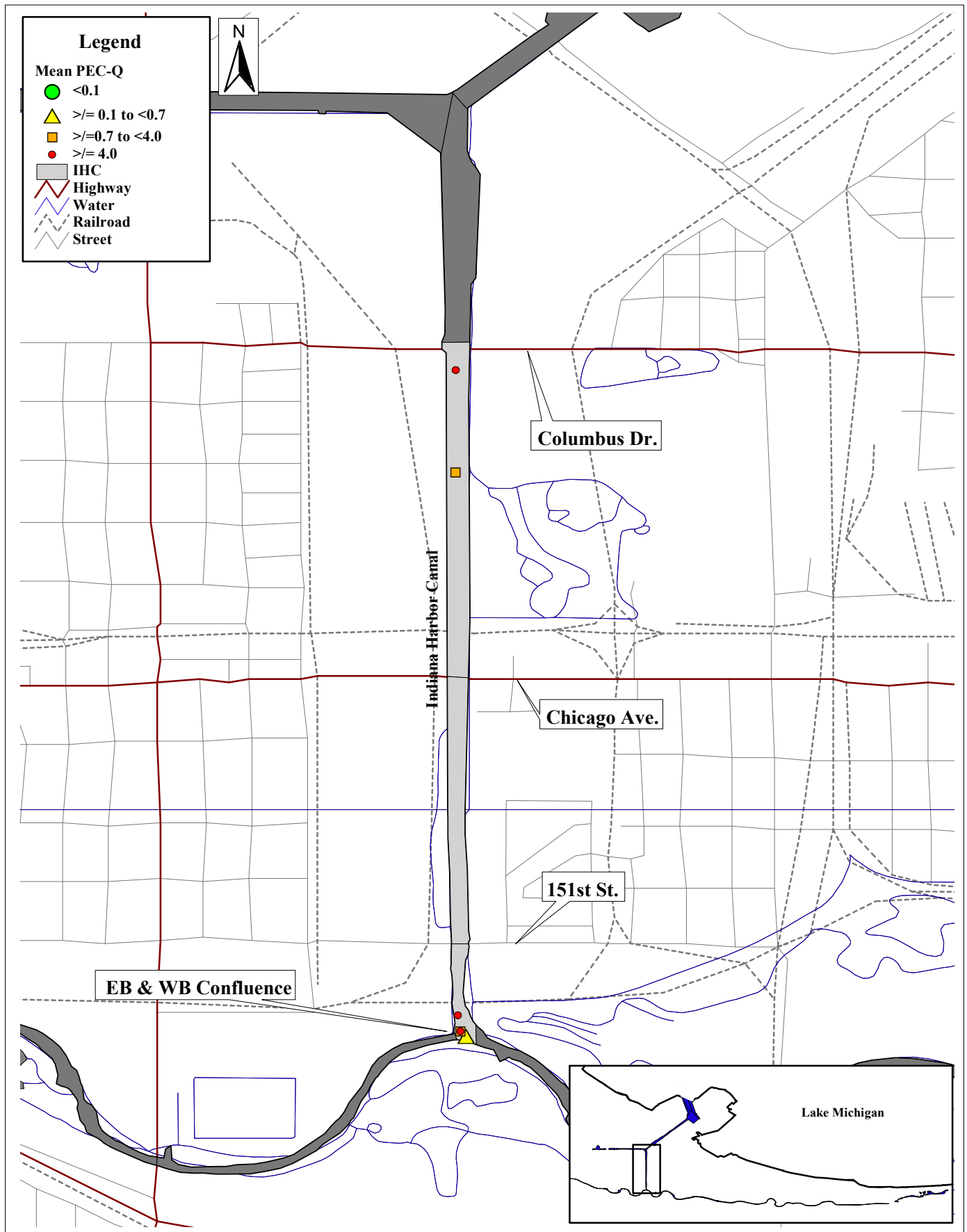


Figure 10.10. Areal extent of sediment toxicity in the IHC.

