

Table 5. *Escherichia coli* (Biotype I) Distribution on Raw Pork Carcass Surface Samples

Range, cfu/cm²	Number of Samples	Percent of Total	Cumulative Number	Cumulative Percent
<1 ¹	1,458	69.0	1,458	69.0
1 - 10	232	11.0	1,690	80.0
11 - 100	185	8.8	1,875	88.8
101 - 1,000	136	6.4	2,011	95.2
1,001 - 10,000	68	3.2	2,079	98.4
10,001 - 100,000	28	1.3	2,107	99.8
100,001 - 1,000,000	5	0.2	2,112	100.0
TOTAL	2,112	100.0	-	-

¹ Negative by method.

Source: Nationwide Pork Microbiological Baseline Data Collection Program: Market Hogs (April 1995 - March 1996).

Table 6. *Clostridium perfringens* Distribution on Raw Pork Carcass Surface Samples

Range, cfu/cm²	Number of Samples	Percent of Total	Cumulative Number	Cumulative Percent
<1 ¹	1,892	89.6	1,892	89.6
1 - 10	48	2.3	1,940	91.9
11 - 100	86	4.1	2,026	95.9
101 - 1,000	70	3.3	2,096	99.2
1,001 -10,000	11	0.5	2,107	99.8
10,001 - 100,000	5	0.2	2,112	100.0
TOTAL	2,112	100.0	-	-

¹ Negative by method.

Source: Nationwide Pork Microbiological Baseline Data Collection Program: Market Hogs (April 1995 - March 1996).

Table 7. *Staphylococcus aureus* Distribution on Raw Pork Carcass Surface Samples

Range, cfu/cm²	Number of Samples	Percent of Total	Cumulative Number	Cumulative Percent
<1 ¹	1,775	84.0	1,775	84.0
1 - 10	90	4.3	1,865	88.3
11 - 100	118	5.6	1,983	93.9
101 - 1,000	85	4.0	2,068	97.9
1,001 - 10,000	34	1.6	2,102	99.5
10,001 - 100,000	8	0.4	2,110	99.9
100,001 - 1,000,000	2	0.1	2,112	100.0
TOTAL	2,112	100.0	-	-

¹ Negative by method.

Source: Nationwide Pork Microbiological Baseline Data Collection Program: Market Hogs (April 1995 - March 1996).

Table 8. *Listeria monocytogenes* Distribution on Enumerated Positive Raw Pork Carcass Surface Samples

Range, MPN/cm²	Number of Samples	Percent of Total	Cumulative Number	Cumulative Percent
<0.03 ¹	77	52.0	77	52.0
0.03 - 0.30	39	26.4	116	78.4
0.31 - 3.0	22	14.9	138	93.2
3.1 - 30.0	9	6.1	147	99.3
>30.0 ²	1	0.7	148	100.0
TOTAL	148	100.0	-	-

¹ Negative by quantitative MPN method.

² Maximum level detected = 46.0 MPN/cm².

Source: Nationwide Pork Microbiological Baseline Data Collection Program: Market Hogs (April 1995 - March 1996).

Table 9. *Campylobacter jejuni/coli* Distribution on Enumerated Positive Raw Pork Carcass Surface Samples

Range, MPN/cm²	Number of Samples	Percent of Total	Cumulative Number	Cumulative Percent
<0.03 ¹	508	79.5	508	79.5
0.03 - 0.30	113	17.7	621	97.2
0.31 - 3.0	13	2.0	634	99.2
3.1 - 30.0	4	0.6	638	99.8
>30.0 ²	1	0.2	639	100.0
TOTAL	639	100.0	-	-

¹ Negative by quantitative MPN method.

² Maximum level detected = 46.0 MPN/cm²

Source: Nationwide Pork Microbiological Baseline Data Collection Program: Market Hogs (April 1995 - March 1996).

Table 10. *Salmonella* Distribution on Enumerated Positive Raw Pork Carcass Surface Samples

Range (MPN/cm²)	Number of Samples	Percent of Total	Cumulative Number	Cumulative Percent
<0.03 ¹	92	54.4	92	54.4
0.03 - 0.30	53	31.4	145	85.8
0.31 - 3.0	16	9.5	161	95.3
3.1 - 30.0 ²	8	4.7	169	100.0
TOTAL	169	100.0	-	-

¹ Negative by quantitative MPN method.

² Maximum level detected = 23.0 MPN/cm²

Source: Nationwide Pork Microbiological Baseline Data Collection Program: Market Hogs (April 1995 - March 1996).

Table 11: Number of Raw Pork Samples Containing One or More Species of Pathogenic Bacteria ¹

Number of Pathogens	Number of Samples	Cumulative Number of Samples	Cumulative Percent
0 ²	1,006	1,006	47.6
1	754	1,760	83.3
2	265	2,025	95.9
3	70	2,095	99.2
4	15	2,110	99.9
5	2	2,112	100.0

¹ *C. perfringens*, *S. aureus*, *L. monocytogenes*, *C. jejuni/coli*, *E. coli* O157:H7, *Salmonella* spp.

² Negative by method.

Source: Nationwide Pork Microbiological Baseline Data Collection Program: Market Hogs (April 1995 - March 1996).

FIGURES

Figure 1. Prevalence of Selected Microorganisms on Raw Pork Carcass Surface Samples

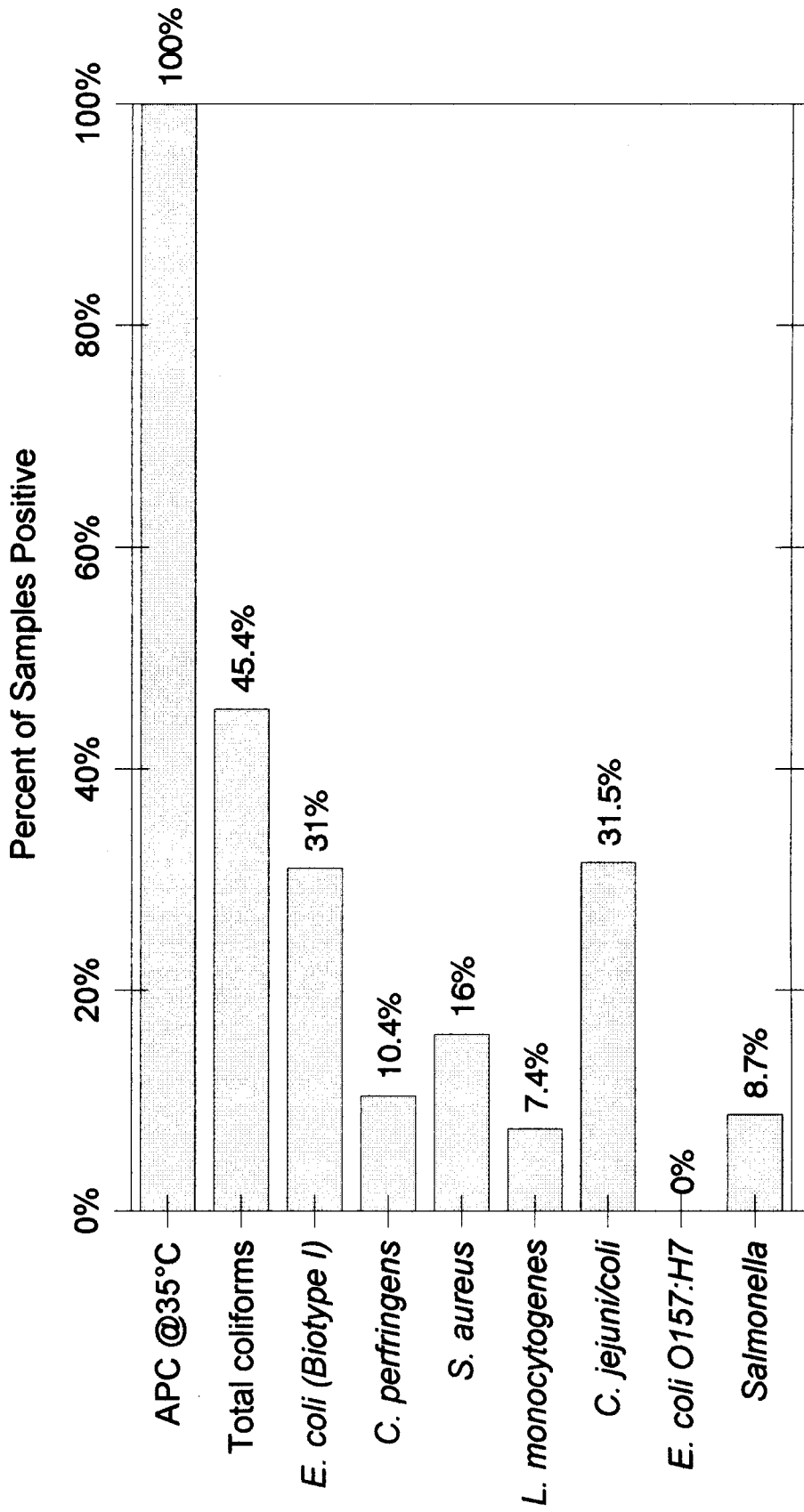


Figure 2. Mean Level of Selected Microorganisms per Square Centimeter on Raw Pork Carcass Surface Samples

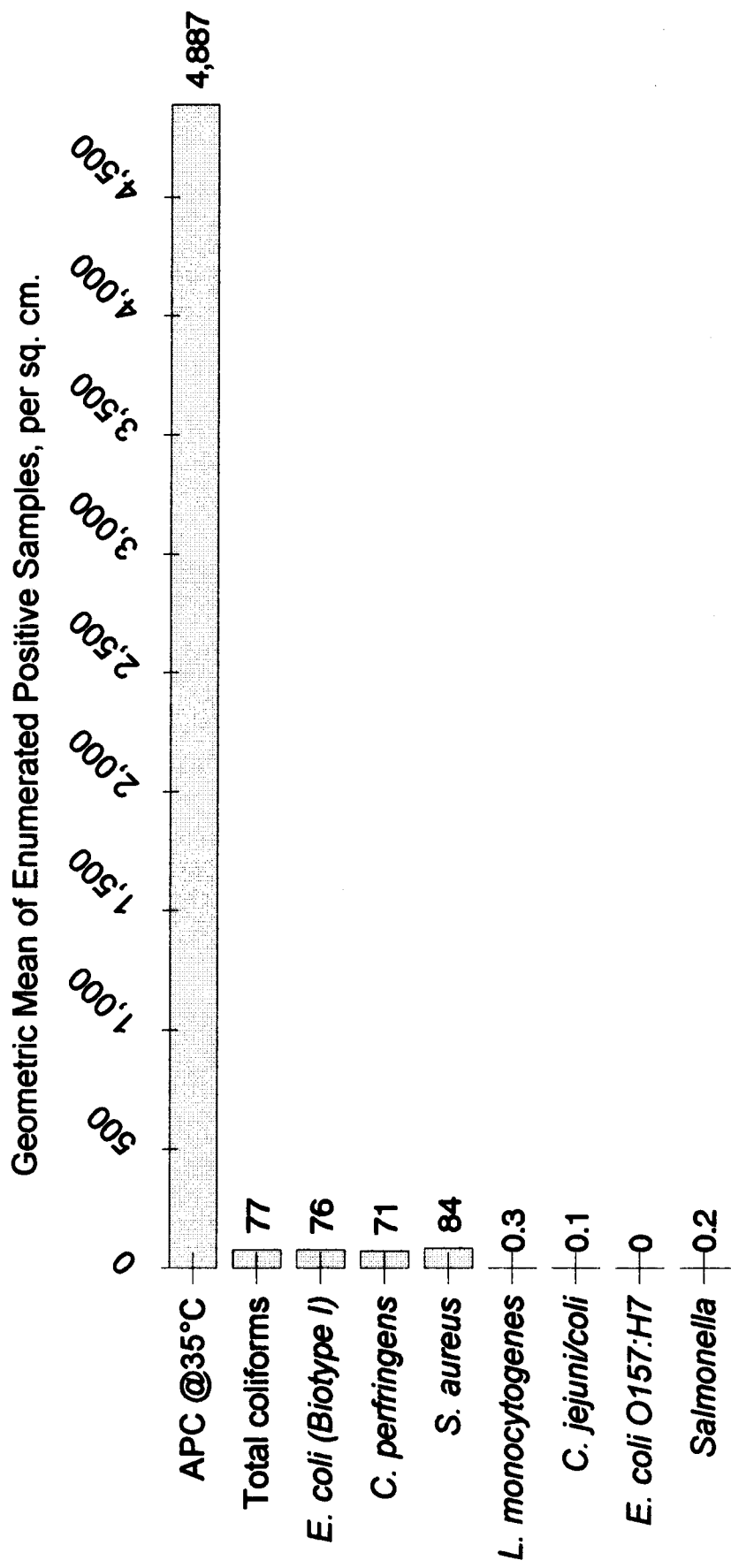


Figure 3. Aerobic Plate Count @35°C Distribution on Raw Pork Carcass Surface Samples

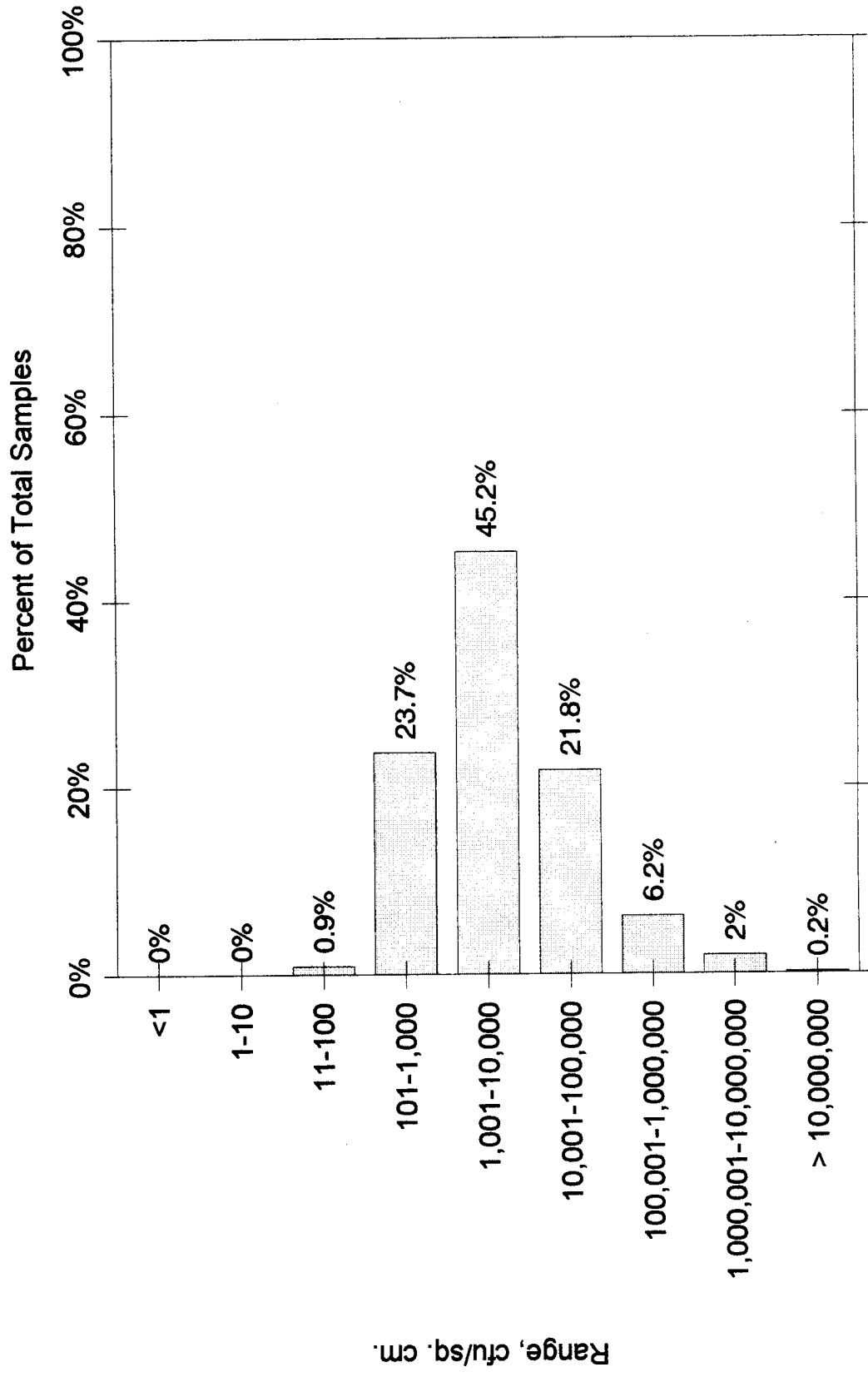


Figure 4. Total Coliform Distribution on Raw Pork Carcass Surface Samples

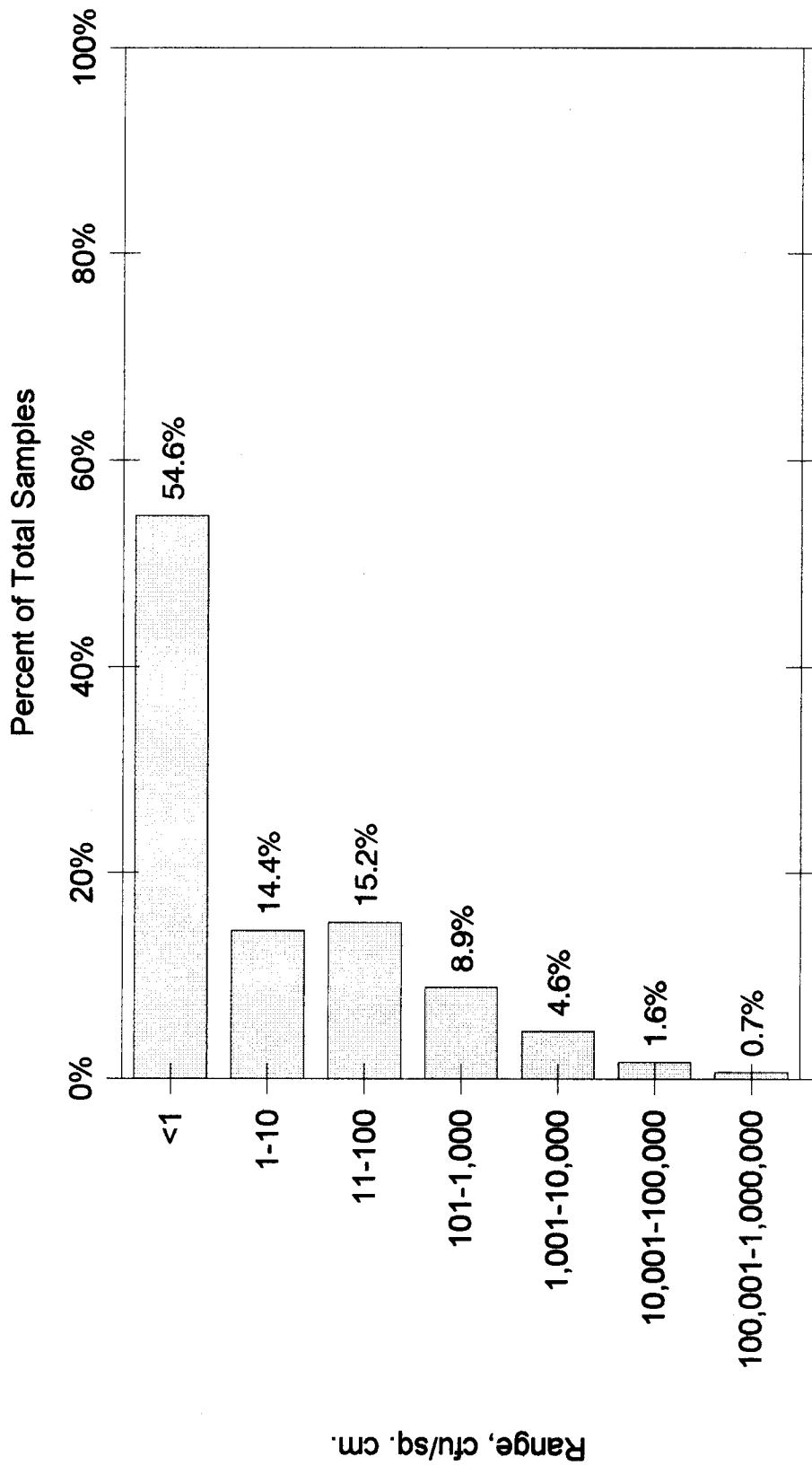


Figure 5. *Escherichia coli* (Biotype I) Distribution on Raw Pork Carcass Surface Samples

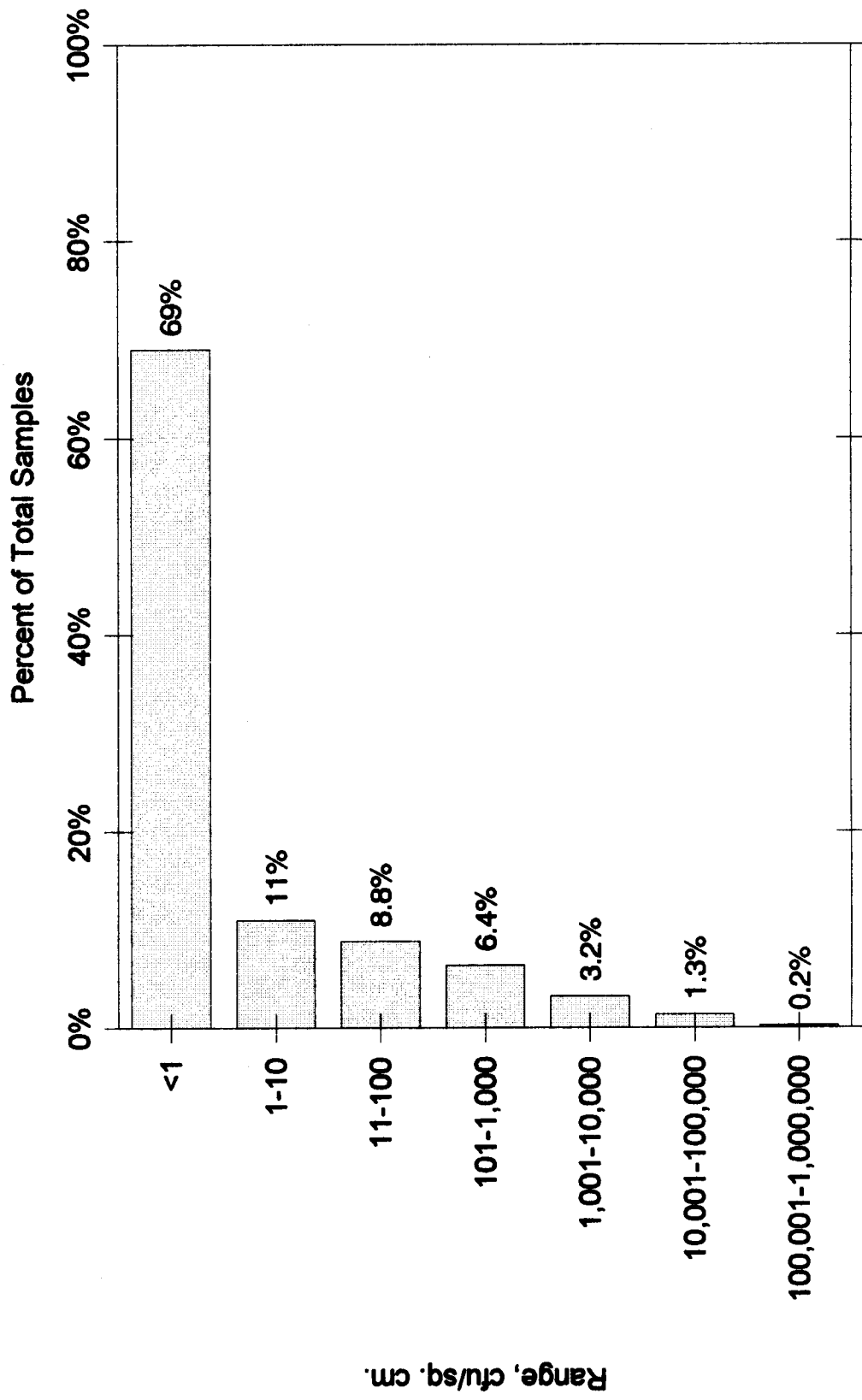


Figure 6. *Clostridium perfringens* Distribution on Raw Pork Carcass Surface Samples

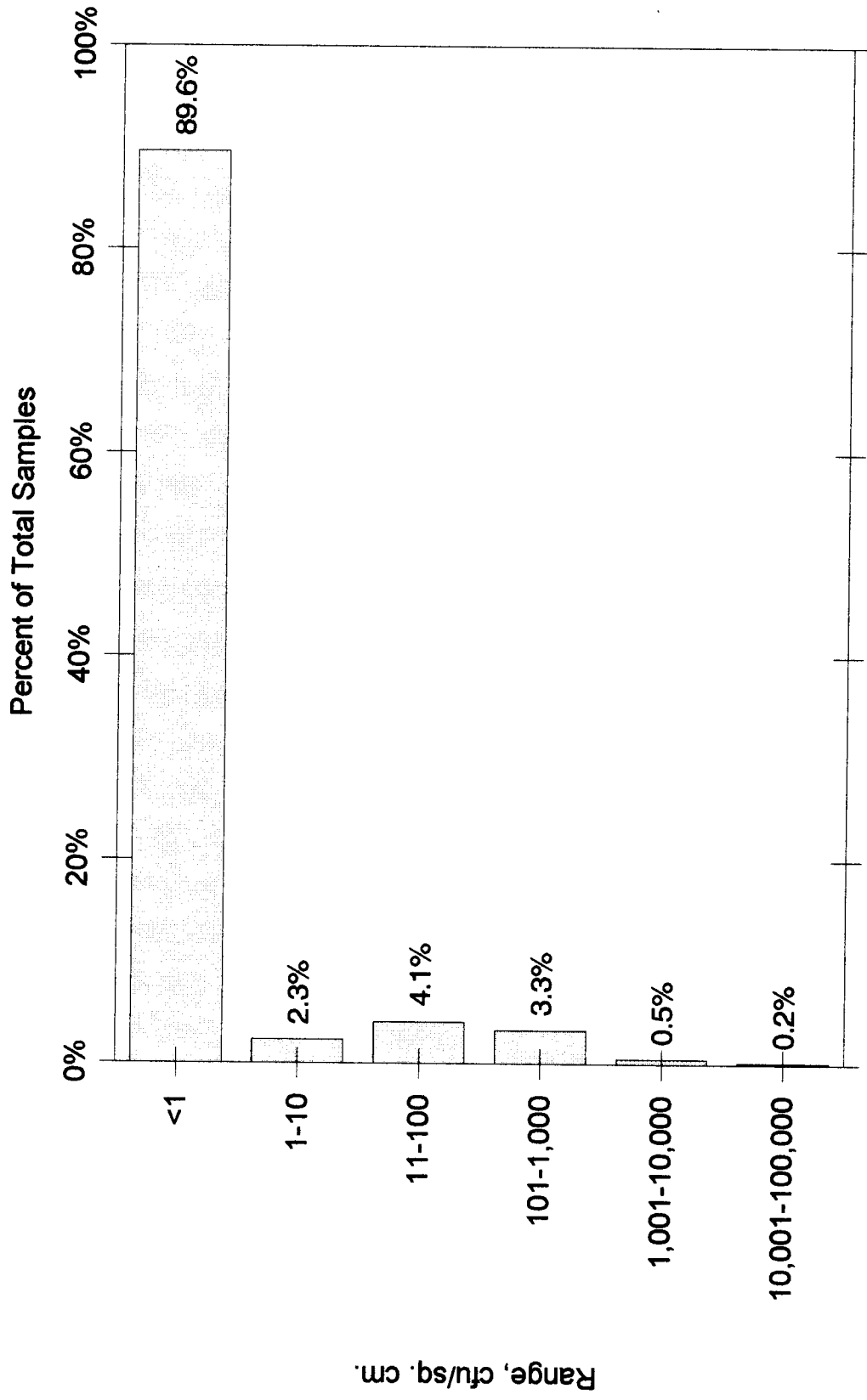


Figure 7. *Staphylococcus aureus* Distribution on Raw Pork Carcass Surface Samples

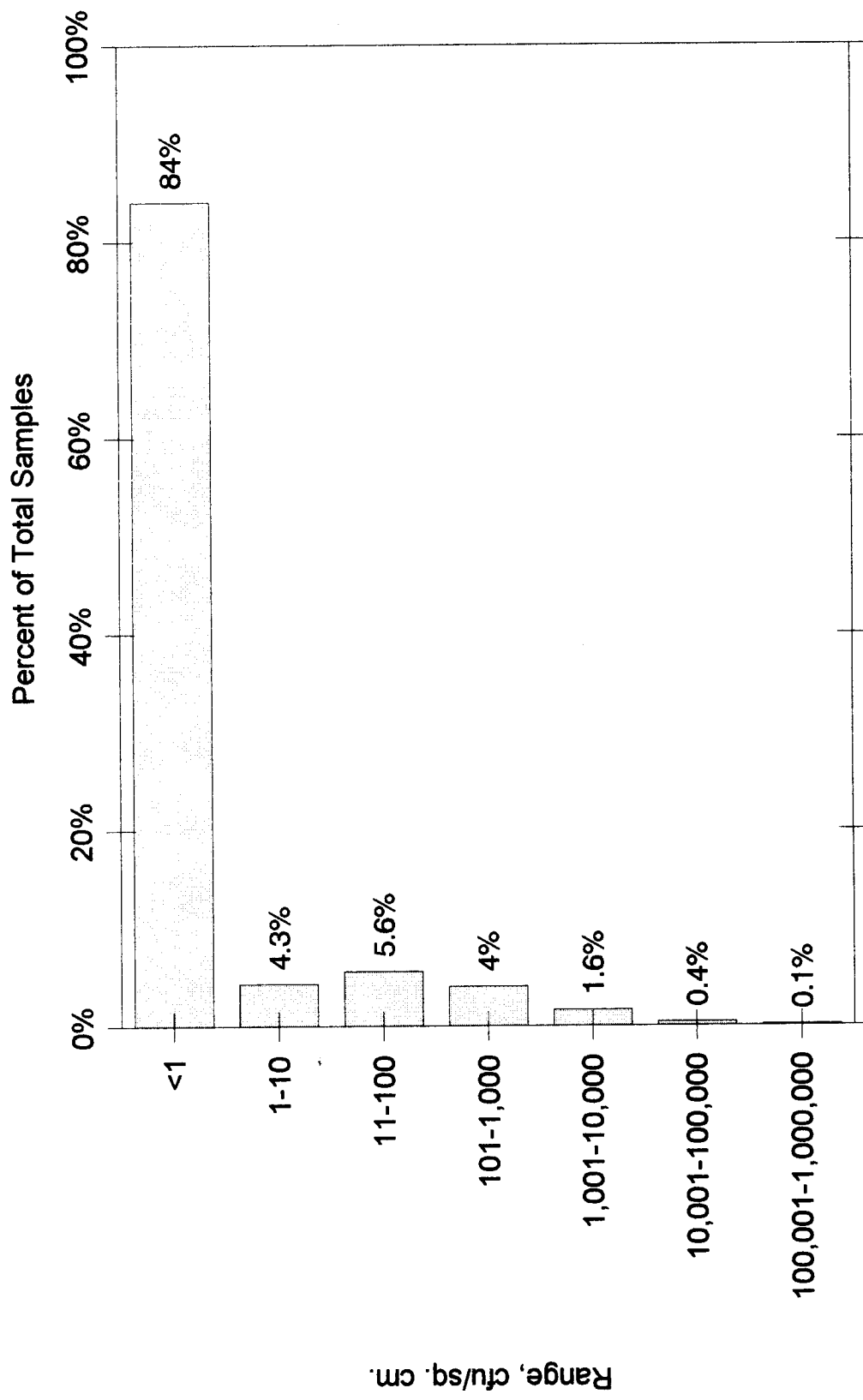


Figure 8. *Listeria monocytogenes* Distribution on Enumerated Positive Raw Pork Carcass Surface Samples

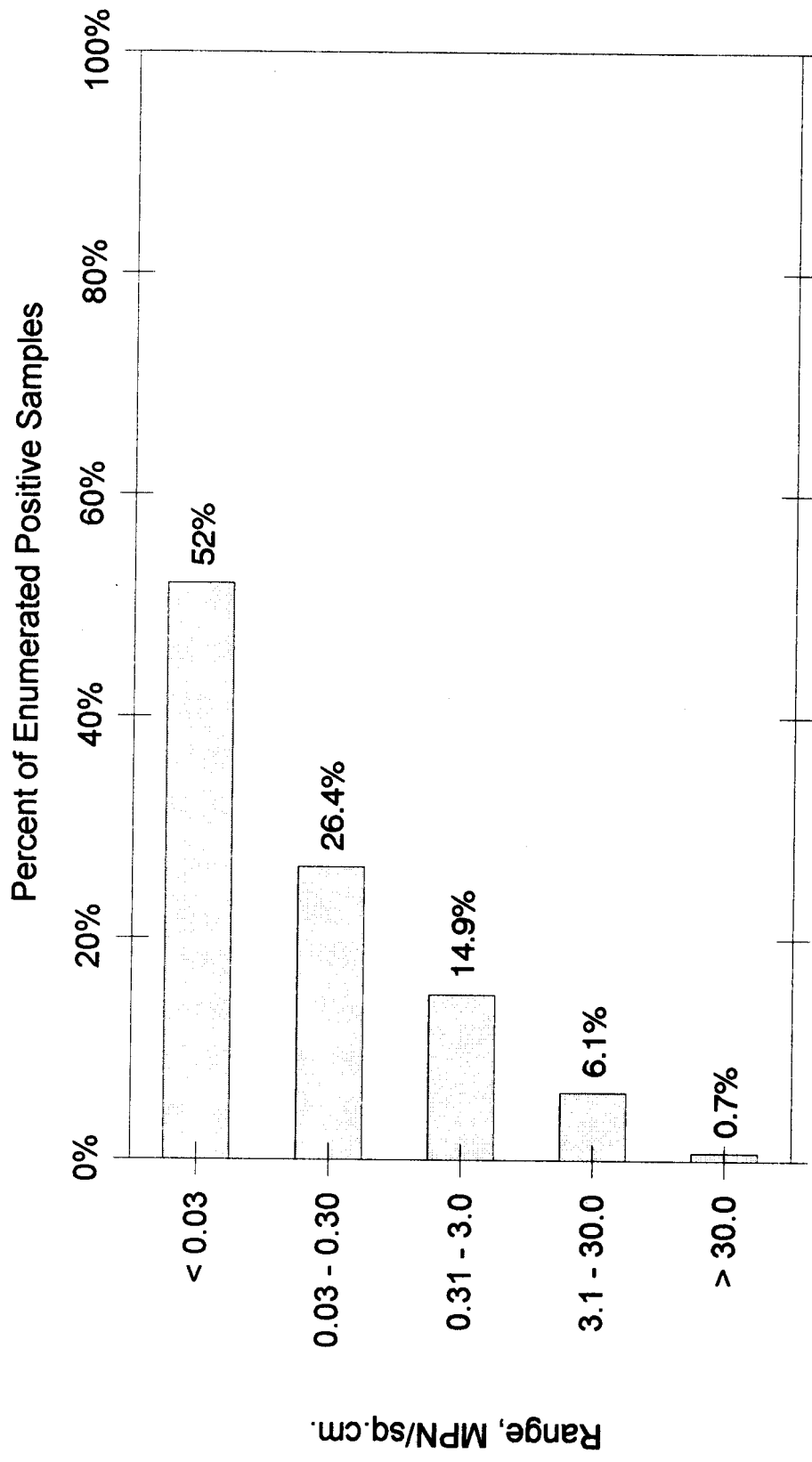


Figure 9. *Campylobacter jejuni/coli* Distribution on Enumerated Positive Raw Pork Carcass Surface Samples

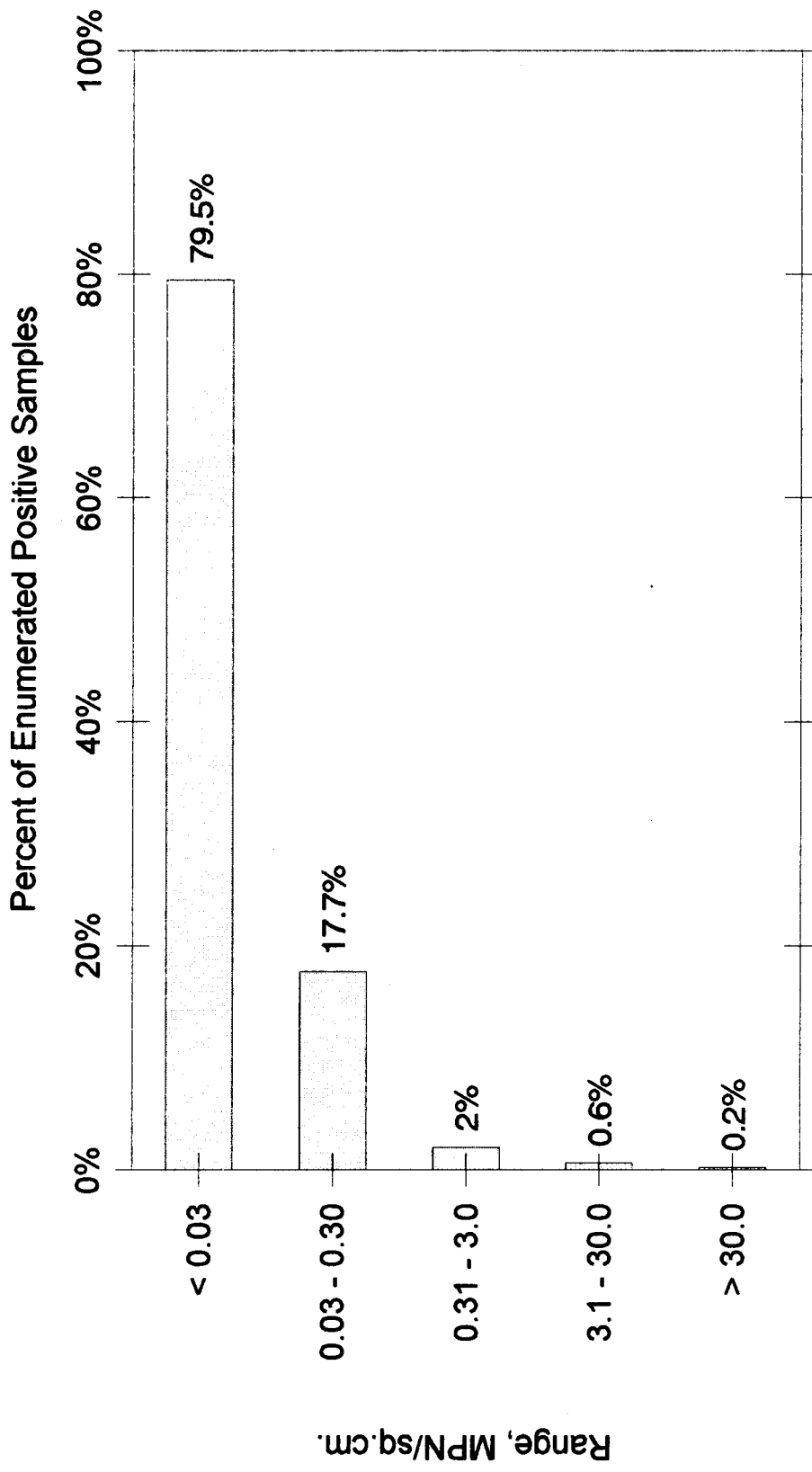


Figure 10. Salmonella Distribution on Enumerated Positive Raw Pork Carcass Surface Samples

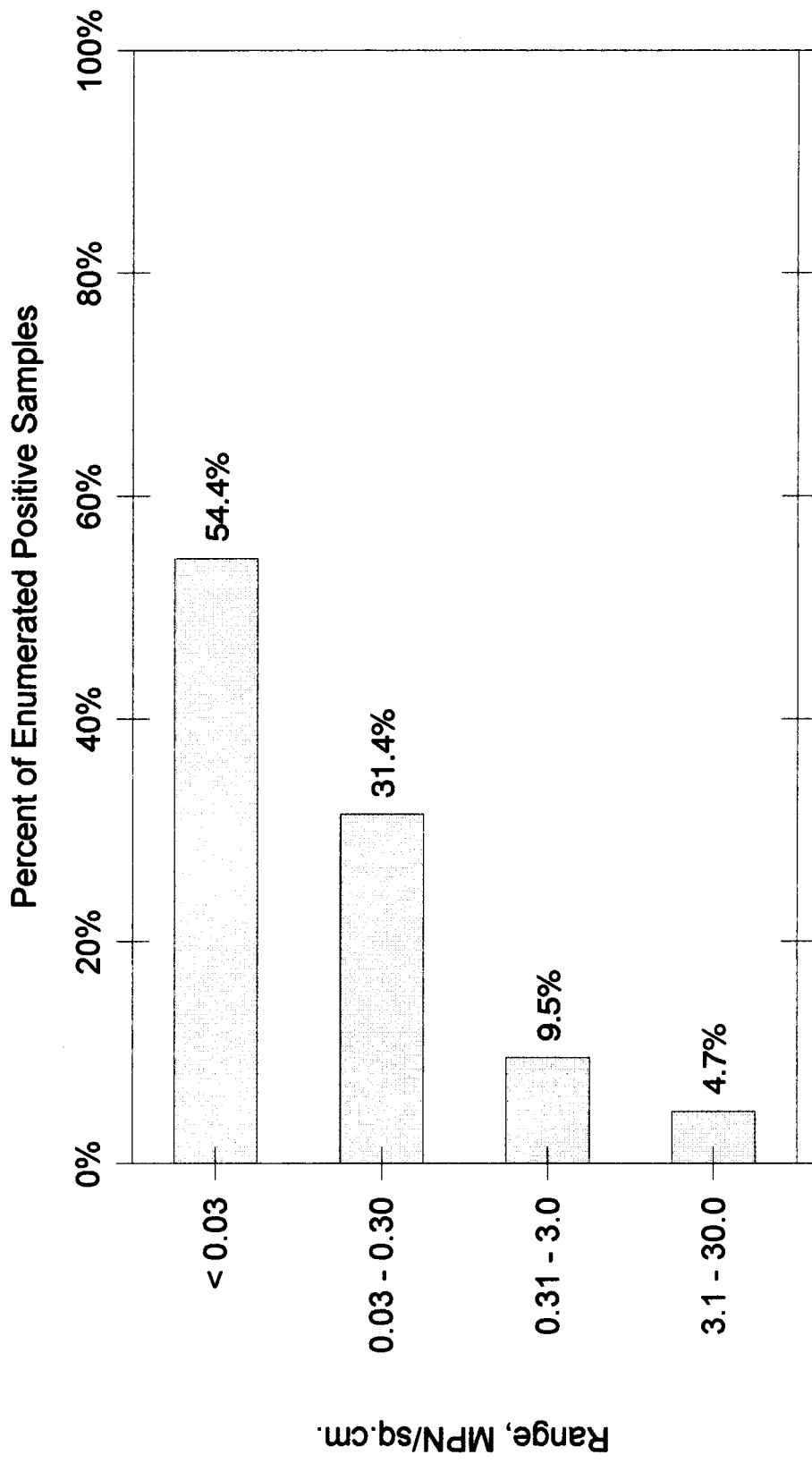
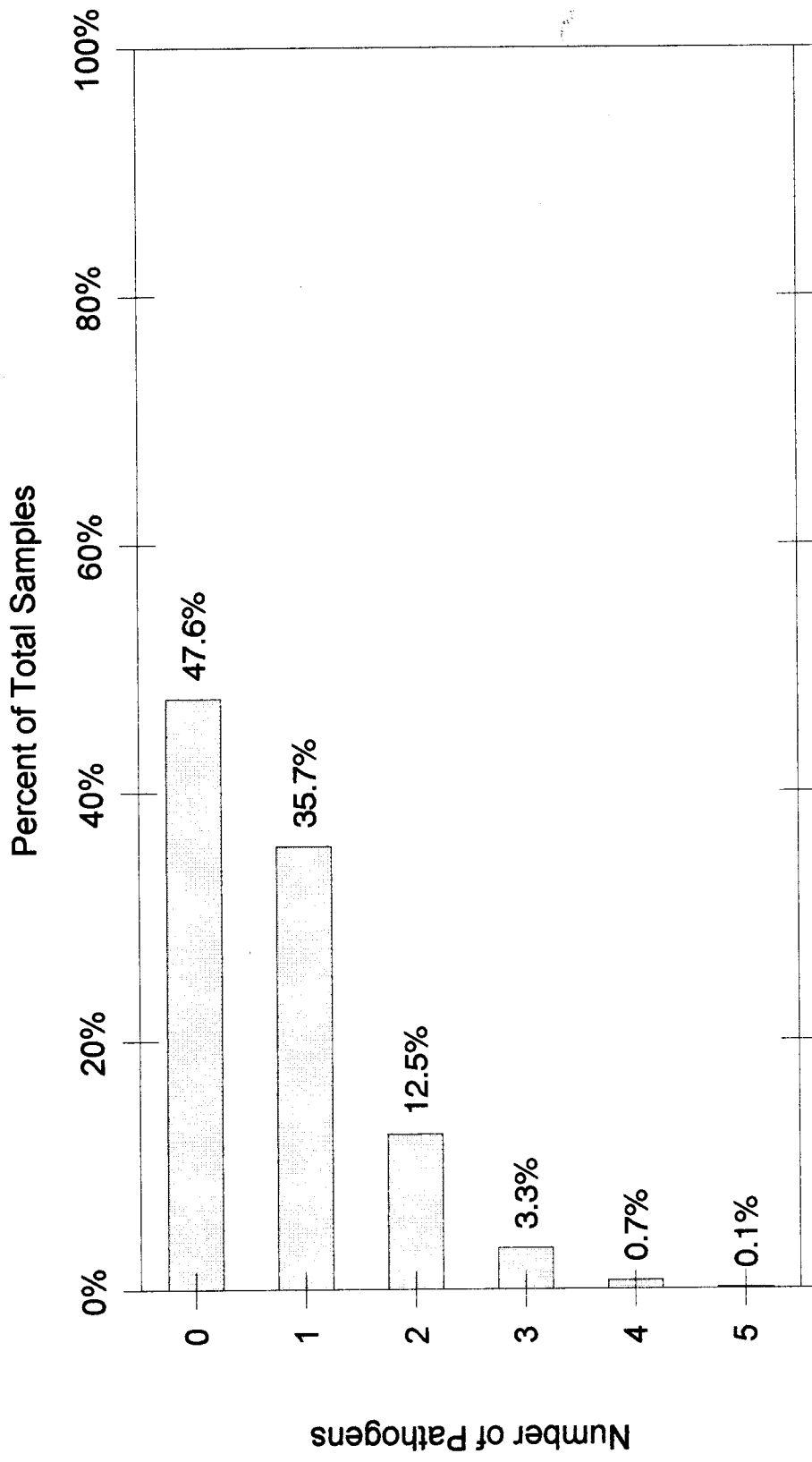


Figure 11. Percent of Raw Pork Samples Containing One or More Species of Identified Pathogenic Bacteria



REFERENCES

1. Food Safety and Inspection Service. 1994. Nationwide Beef Microbiological Data Collection Program: Steers and Heifers. U.S. Department of Agriculture, Washington, DC.
2. Food Safety and Inspection Service. 1996. Nationwide Beef Microbiological Data Collection Program: Cows and Bulls. U.S. Department of Agriculture, Washington, DC.
3. Ingram, M. and T. A. Roberts. 1976. The Microbiology of the Red Meat Carcass and the Slaughterhouse. *Royal Society of Health Journal*. 96:270-276.
4. Gill, C. O. and J. Bryant. 1992. The contamination of Pork with Spoilage Bacteria during Commercial Dressing, Chilling and Cutting of Pig Carcasses. *Int. J. Food Microbiol.* 16:51-62.
5. Johanson, L., B. Underdal, K. Grosland, O. P. Whelehan and T. A. Roberts. 1983. A Survey of the Hygienic Quality of Beef and Pork Carcasses in Norway. *Acta Vet. Scand.* 24:1-13.
6. Subcommittee on Microbiological Criteria, Committee on Food Protection, Food and Nutrition Board, National Research Council. 1985. An Evaluation of the Role of Microbiological Criteria for Foods and Food Ingredients. National Academy Press, Washington, DC.
7. Bean, N.H. and P.M. Griffin. 1990. Foodborne Disease Outbreaks in the United States, 1973-1987. *J. Food Protection.* 53:804-817.