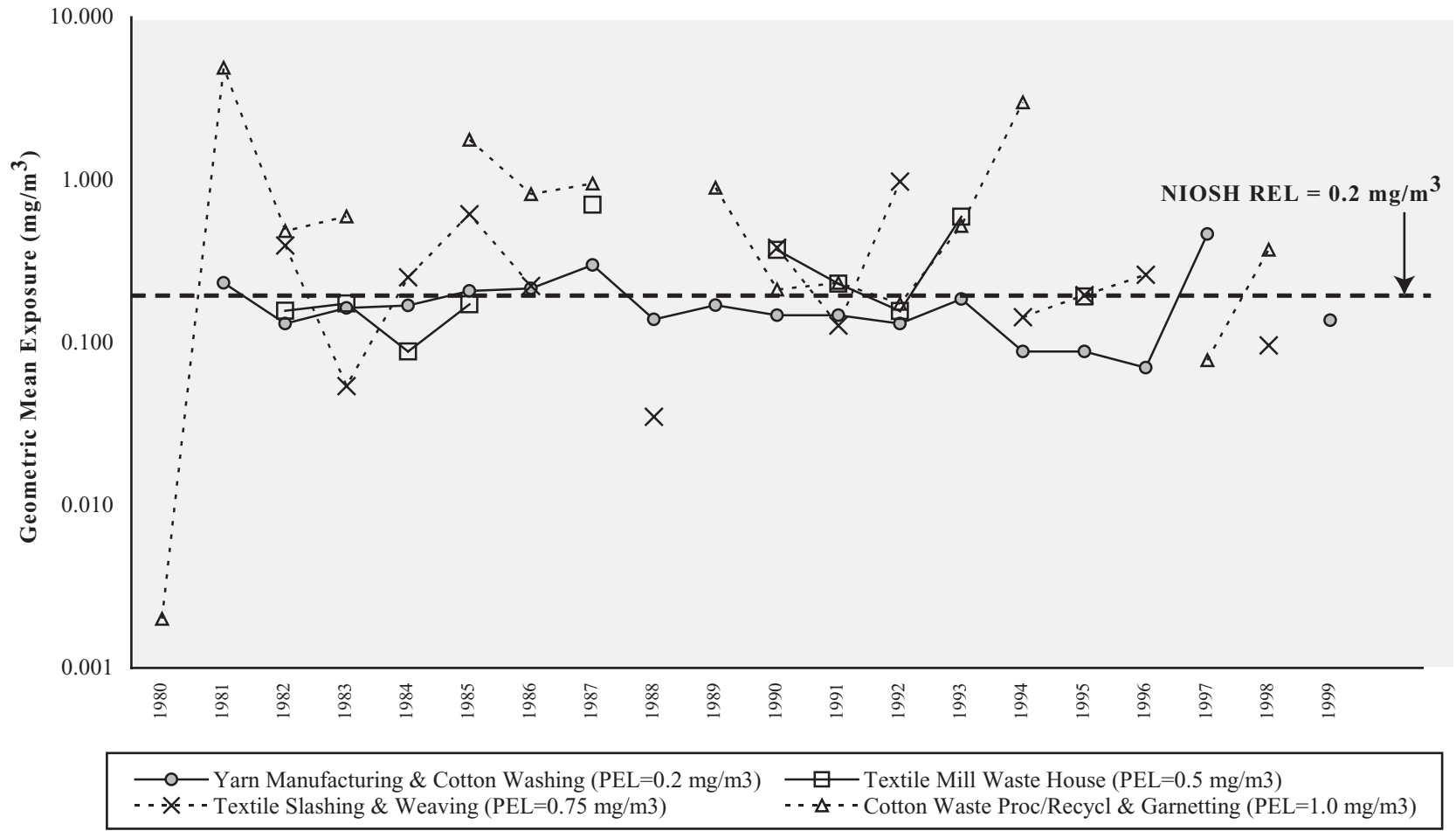


**Figure 4-4. Cotton dust: Geometric mean exposures by cotton process, OSHA samples, 1980-1999**



PEL - permissible exposure limit      REL - recommended exposure limit      mg/m³ - milligrams per cubic meter  
 NOTE: The OSHA PEL is 0.2 mg/m³ for yarn manufacturing and cotton washing operations, 0.5 mg/m³ for textile mill waste house operations or for dust from lower grade washed cotton used during yarn manufacturing, 0.75 mg/m³ for textile slashing and weaving operations, and 1.0 mg/m³ for cotton waste processing operations or waste recycling (i.e., sorting, blending, cleaning, and willowing) and garnetting. See appendices for source description, methods, and agents.  
 SOURCE: Occupational Safety and Health Administration (OSHA) Integrated Management Information System.