



get
growing!

spring-summer | 09

Classes and tours
for youth, adults,
and families.

classes at:

Missouri Botanical Garden

Shaw Nature Reserve

EarthWays Center

Butterfly House



index

Gardening Blitz2 Butterfly House32
 MBG Adult Education.....3 Youth & Family Programs33
 Shaw Nature Reserve 22 Calendar of Classes38
 EarthWays Center 30 *See pages 38-39 for complete list of classes*

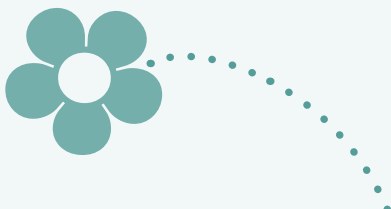
Gardening Blitz



A full weekend of expert gardening advice and resources.

Saturday and Sunday, February 21–22, 2009

Select from an a-la-carte menu of our most popular full-length classes and create your own custom-fit educational program. You can register for just one class or several!



index

Saturday, February 21

Page

10 a.m. to noon

GT57A Climatron and Temperate House Tour with Deb Lalumondier . . 11
 GP46A Organic Lawn Care with William Sadler 5
 NS14A Birds and Birding in St. Louis with Bill Rowe 12
 FD29A A Spring Floral Arrangement with Jennifer Smith 14
 GP43A Pruning and Timing with Carlos Flores and Carol Eder..... 5
 PC53A Perennials for Saturday Gardeners with June Hutson..... 8

1 to 3 p.m.

LA31A Planting for Screening and Privacy with Randy Mardis 7
 GP62A Adding Color to Your Garden with Mike Miller 5
 PH21A Garden Photography Workshop with Scott Avetta 16
 AR23A A Taste of Watercolor with Judy Seyfert 13
 CK42A Cake Decorating for Beginners with Cynthia Sciaroni 18
 GP21A Divide and Multiply Your Perennials with Ann Case 5

Sunday, February 22

10 a.m. to noon

GP63A Gardener’s First Steps with Cindy Gilberg 5
 HD59A Shady Characters with Chip Tynan 4
 GP36A Growing Roses in St. Louis with Diane Brueckman 5
 GP64A Spring Lawn Care with Glennon Kraemer 5
 SG14A Container Gardening with Jill Schroer 7

1 to 3 p.m.

IP35A Behind the Scenes—The Research Greenhouse with Emily Colletti . 9
 IP16A Growing Orchids with Babs Wagner 9
 GP51A Organic Gardening Basics with Cheryl Rafert 6

Green for 150 Years: The Missouri Botanical Garden Celebrates Sustainability for the Future

The Missouri Botanical Garden opened to the public on June 15, 1859, making it the oldest botanical garden in continuous operation in the nation. In 2009, the Garden observes our 150th anniversary, or sesquicentennial. Join us throughout the year as we celebrate our heritage and look forward to the next 150 years.

In 2009, "Shaw's Garden" will pay tribute to both its Victorian and St. Louis roots with a **floral clock**. First developed in Edinburgh, working floral clocks rocketed to popularity with the 1904 World's Fair, when St. Louis displayed a magnificent example. In 2009, from April through October, the Garden will feature a new floral clock near the historic reflecting pools. Twenty feet across and highlighting seasonal flowers of all varieties, the clock will feature a working cuckoo chirping every quarter hour.

The William T. Kemper Center for Home Gardening will display **heirloom vegetables** from the second half of the 19th century in the Family Vegetable Garden.

Shaw kept handwritten journals of his European travels in the 1840s, documenting the places he saw, foods he ate, books he read, and more. These never-before-seen travelogs are one of the few personal documents written by Shaw that exist today, and will be made public for the first time in 2009. Read **Travels with Henry** throughout the year on the Garden's website, www.mobot.org. When you visit, take the cell phone **history audio tour** to hear what Shaw might say about his beloved Garden today.

Pledge to "**Grow Green with the Garden**" by resolving to make sustainable lifestyle choices. In spring 2009, pick up a pledge card on-site or visit www.mobot.org to select one or more environmentally-friendly choices to benefit the earth.

Learn more about sustainable living at the **Green Living Expo**. Visitors to the Brookings Interpretive Center from May 1 through October 31 can peruse goods, services, and information designed to help you grow green.

all day classes

Gardening 101 Seminar

This intensive, interactive course will acquaint you with the fundamentals of home gardening. In the morning, Cindy will talk about plant choices, planting and maintenance in your garden. In the second half, she will lead a guided garden tour highlighting landscape design ideas, plant groups and include an informal question and answer session. Bring your home gardening questions. Be prepared for an hour lunch on your own.

GP10A

Cindy Gilberg

Wednesday, March 18

10 a.m. to 3:30 p.m.

MBG - Kemper Center Classroom

\$60 member, \$70 nonmember

GP10B

Cindy Gilberg

Wednesday, April 22

10 a.m. to 3:30 p.m.

MBG - Kemper Center Classroom

\$60 member, \$70 nonmember

Complete Container Gardening

Tired of planting the same old geraniums and marigolds in your containers? Jill will teach you basic container care and needs to make your potted plants last all summer. She will demonstrate planting a sphagnum moss container. And with years of experience, she will show you a variety of different plants to combine for sun or shade. After your lunch break, Jill will take you on a guided tour of the Kemper Center containers. You will receive the detailed list of plants to take home. An hour and half lunch is on you own.

HD32A

Thursday, June 19

10 a.m. to 3 p.m.

Jill Schroer

MBG - Kemper Center Classroom

\$60 member, \$70 nonmember

3 APLD CEUs



To arrange for all-day classes for your Garden Club or other groups, call (314) 577-5148 for dates and fees.

classes for professionals

and advanced gardeners

Shady Characters

NEW!

Many gardeners find gardening in the shade difficult. Chip Tynan the Garden's Answer Man says the reason is that gardeners just aren't selecting the proper shady characters! Come and learn what herbaceous plants and shrubs grow best in the St. Louis area. This class is geared towards advanced gardeners. Special attention will be paid to plants that have variegated foliage and several seasons of interest.

HD59A

Chip Tynan

Sunday, February 22

10 a.m. to noon

MBG - Ridgway Center

\$30 member, \$35 nonmember

1.5 APLD CEUs



New Thoughts and Practices for Planting Trees and Shrubs

NEW!

Stem-girdling roots and potbound plants coming from production nurseries are serious threats to the longterm survival of plants in the landscape. In this class, Paul will share what the latest research says on how we need to adjust our planting practices that will enable our new plants to not just survive but to thrive.

HD72A

Paul Roberts

Wednesday, February 25

7 to 9 p.m.

MBG - Missouri Room

\$30 member, \$35 nonmember

1.5 APLD CEUs

Made for the Shade

NEW!

Go way beyond hostas and learn all the possibilities for herbaceous plants and shrubs to grow in the St. Louis area. This class is geared towards advanced gardeners and will cover plants that add interest to shady areas with variegated foliage, colorful berries, and interesting bark. Enliven the shade with more than you thought possible.

HD38A

Cindy Gilberg

Wednesday, March 11

7 to 9 p.m.

MBG - Botanical Room

\$25 member, \$30 nonmember

1.5 APLD CEUs

Stopping the Global Invasion Starts in your Backyard!!

NEW!

Is there danger lurking in your yard? Something uninvited? Come find out about locally invasive plants and how to have a "safe" sustainable yard. We will learn the difference between invasive plants and weeds and what to use in their place. And find out what it would take to have your yard be a "Sustainable Site™," a standard being developed to help homeowners and managers of large landscapes keep their carbon footprint down while increasing the ecosystem services values of the site.

HD31A

Valerie Vartanian

Monday, March 30

7 to 9 p.m.

MBG - Missouri Room

\$30 member, \$35 nonmember

Colorize your Garden to Go

NEW!

If your time is precious and you love colorful landscapes, this is the class for you! Angie will present a list of low-maintenance perennial plants and shrubs and show you through live demonstration how to prune your plants. She will discuss and demonstrate how to care for these plants to gain the most impact in your landscape. Great color in the landscape doesn't have to be complicated!

HD12A

Angie Eckert

Thursday, April 23

7 to 9 p.m.

MBG - Botanical Room

\$30 member, \$35 nonmember

1.5 APLD CEUs

Tough Plants for Clay Soils

When you are faced with un-improved clay soil, and it is not in the budget or the back to create wonderful, loose, friable soil, where do you turn? Debbie suggests you turn to Missouri natives or other plants found growing in similar conditions elsewhere in the world. Through an on-grounds walk, Debbie Ladd will familiarize you with these favorites and discuss how they can help solve your problems. You will receive printed notes on each of the plants discussed as well as a copy of the Kemper fact sheet she has authored on the topic.

HD13A

Deborah Ladd

Monday, June 8

5 to 7 p.m.

MBG - meet in Kemper Classroom

\$30 member, \$35 nonmember

APLD

The Missouri Botanical Garden is registered with the Association of Professional Landscape Designers as a provider of Continuing Professional Education. Classes approved for CE units are noted with APLD CEU and the approved credits.

gardening practices

Pruning and Timing

This class will cover the proper techniques and timing for pruning and cutting back specific types of plants. We will also cover maintenance and proper use of pruning shears and pruners. Techniques and timing to use pruning to extend bloom in the perennial garden will also be discussed.

GP43A

Carol Eder and Carlos Flores

Saturday, February 21

10 a.m. to noon

MBG - Ridgway Center

\$25 member, \$30 nonmember



Divide and Multiply Your Perennials

One of the most economical ways to fill your garden with choice plants and to share them with fellow gardeners is to divide them. In this class you will learn which perennials take well to dividing, which need regular dividing, and when and how to divide your plants.

GP21A

Ann Case

Saturday, February 21

1 to 3 p.m.

MBG - Ridgway Center

\$25 member, \$30 nonmember



Selecting, Planting, and Pruning Roses

Would you like to know the best shrub and tea roses for the St. Louis area? Diane will tell her favorite rose picks for our climate from her many years of experience of caring for the Garden's roses. She will also cover soil preparation, planting, and fertilizing which are important first steps in growing perfect roses. Proper pruning to keep your roses growing great will also be addressed.

GP36A

Diane Brueckman

Sunday, February 22

10 a.m. to noon

MBG - Ridgway Center

\$25 member, \$30 nonmember



Spring Lawn Care

Cool-season lawns of bluegrass and fescue varieties are best for St. Louis. In this class, Glenn will focus on seeding, renovating, fertilizing, and watering. He will also discuss weed, disease, and pest control challenges. You'll come away with a complete picture of the steps necessary to maintain your cool-season lawn.

GP64A

Glennon Kraemer

Sunday, February 22

10 a.m. to noon

MBG - Ridgway Center

\$25 member, \$30 nonmember



Organic Lawn Care

Learn how to maintain your lawn without the use of traditional chemicals that can have an impact on wildlife, pets, and family members. The class will be a comprehensive overview of the organic products available for lawn use and the cultural methods you can use to reduce or eliminate pesticides in your lawn. Dr. Sadler will explain the role of organic soil improvement and amendments, how to manage insect pests and diseases organically, and best practices for watering and mowing. Dr. Sadler has spent over 6 years developing organic products and programs. Now is the time to go organic in your lawn.

GP46A

Dr. William C. Sadler

Saturday, February 21

10 a.m. to noon

MBG - Ridgway Center

\$25 member, \$30 nonmember



GP46B

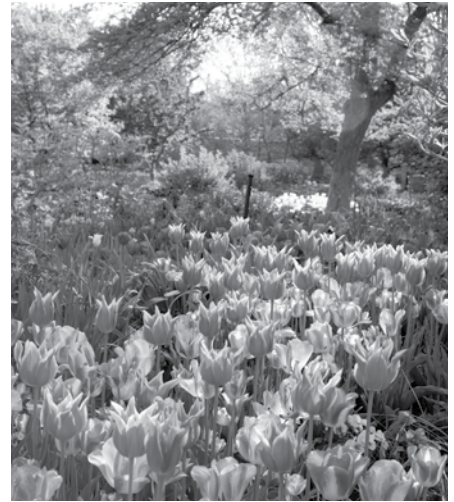
Dr. William C. Sadler

Saturday, April 4

9 to 11 a.m.

STLCC - Wildwood Campus; Rm 304

\$25 member, \$30 nonmember



Adding Color to Your Garden



Join the host of KMOX 'Garden Hotline' and author of the Missouri Gardener's Guide and Month by Month Gardening in Missouri as he highlights plants that can add splashes of color to your garden. With years of experience of designing gardens his selections and ideas will brighten up your garden. He will cover a range of plant material plus other inspired ideas.

GP62A

Mike Miller

Saturday, February 21

1 to 3 p.m.

MBG - Ridgway Center

\$25 member, \$30 nonmember

1.5 APLD CEUs



A Gardener's First Steps



This class is designed for the beginning gardener who wants to get off on the right foot. Topics covered will be soil preparation, watering, fertilizing, and the best plant choices for our area. This is the place to start if you always wanted to become a gardener but just weren't quite sure where to begin.

GP63A

Cindy Gilberg

Sunday, February 22

10 a.m. to noon

MBG - Ridgway Center

\$25 member, \$30 nonmember



gardening practices

Organic Gardening Basics

With increasing concern over the adverse effects of chemical pesticides in the environment, concerned gardeners are looking for effective alternatives. Organic gardening is where many of these ecologically minded gardeners are turning. In this class, Cheryl will explain the basic principles of organic gardening which can provide a conservative and economical approach to gardening. Organic approaches to soil preparation, pest control, and plant care will be covered.

GP51A

Cheryl Rafert

Sunday, February 22

1 to 3 p.m.

MBG - Ridgway Center

\$25 member, \$30 nonmember



GP51B

Cheryl Rafert

Saturday, April 25

9:30 to 11:30 a.m.

STLCC - Wildwood Campus; Rm 304

\$25 member, \$30 nonmember

Gardening for Spanish Speakers

This class will be taught in Spanish and is designed to provide the Spanish speaking horticulture professional with a good understanding of gardening practices for the St. Louis area. Emphasis will be on plant care practices such as planting, watering, fertilizing, pruning and insect and disease control. This class would be a great in-service training class for any professional who would benefit from attending such a class taught in Spanish.

GP65A

Carol Eder and Carlos Flores

Tuesday, February 24

7 to 9 p.m.

MBG - Missouri Room

\$25 member, \$30 nonmember

Pruning Basics

Pruning is often needed to control plant size, enhance beauty, correct damage from pests or breakage, and increase flower and fruit production. In this class, you will learn when and how to prune trees, shrubs, and evergreens to maximize these beneficial effects. The selection and care of equipment will also be discussed.

GP31A

Ben Chu

Tuesday, March 10

7 to 9 p.m.

MBG - Missouri Room

\$25 member, \$30 nonmember

Heirloom Vegetables

You have heard of heirloom tomatoes, but what is an heirloom? In this interactive class, we will define heirloom vegetables, which ones grow well in this area, and where to find them. This class is not limited to tomatoes, but will include a variety of vegetables and plants, as well as their interesting stories. Each student will receive a heirloom seedling to try in their garden.

GP57A

Cheryl Rafert and Tammy Palmier

Tuesday, March 31

7 to 9 p.m.

MBG - Kemper Classroom

\$25 member, \$30 nonmember

Zoysia Lawn Care

Zoysia has different cultural requirements than cool season grasses. In this class, specific information and schedules for fertilizing, watering, and weed control will be presented. Learn how to make your zoysia lawn the best on the block with a minimum of effort.

GP42A

Glennon Kraemer

Saturday, April 18

9 to 11 a.m.

MBG - CBEC room 129

\$25 member, \$30 nonmember

Composting

Composting is a practical and convenient way to transform grass, leaves, and other yard wastes into 'Black Gold' for your borders and beds. Learn what materials to use, which ones to avoid, and accelerated and passive methods of composting. AI will identify simple and advanced composting structures and suggest how to use your compost to improve plant growth.

GP14A

Al Hirson

Saturday, April 25

2:30 to 4:30 p.m.

Daniel Boone Library, Ellisville

\$25 member, \$30 nonmember

Heirloom Roses: Old Garden Roses

The roses of our grandmothers and great grandmothers have a place in the modern garden. Discover the fragrance, beauty and ease of growing the roses our grandmothers loved. Many originated in France in the 1800's and were brought to this country by early settlers. Rosarians like Graham Thomas and Gregg Lowery have dedicated their lives to finding and preserving these wonderful roses.

GP40A

Diane Breuckman

Tuesday, April 28

7 to 9 p.m.

MBG - Missouri Room

\$25 member, \$30 nonmember

1.5 APLD CEUs

NEW!

specialty gardening

Container Gardening

Tired of planting the same old geraniums and marigolds in your containers? Jill will include basic container care and needs plus give you some new ideas for combining plants that will add some pizzazz to your yard. Combinations will include plants for sun and shade.

SG14A

Jill Schroer

Sunday, February 22

10 a.m. to noon

MBG - Ridgway Center

\$25 member, \$30 nonmember

1.5 APLD CEUs



SG14B

Jill Schroer

Wednesday, April 22

7 to 9 p.m.

MBG - Garden Room

\$25 member, \$30 nonmember

1.5 APLD CEUs

Water Gardening

Discover the pleasures of water gardening, still one of the hottest trends in gardening. In this class you will learn how to start and maintain small tub and in-ground pools. Greg will discuss plant selection, planting, and winterizing, as well as fish culture and common maintenance problems.

SG10A

Greg Cadice

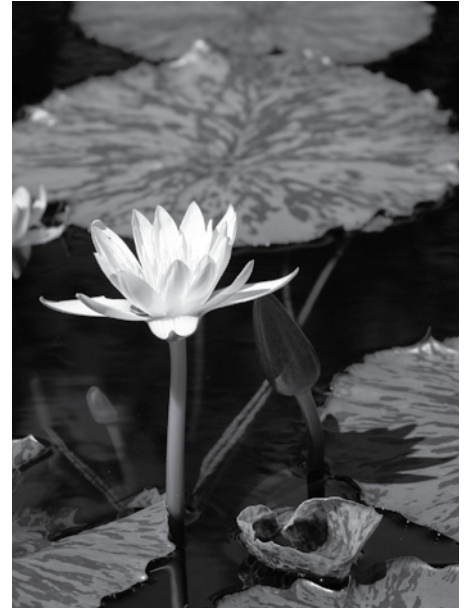
Tuesday, May 19

7 to 9 p.m.

MBG - Garden Room

\$25 member, \$30 nonmember

1.5 APLD CEUs



landscaping

Planting for Screening and Privacy

Plantings can limit access, change a view, seclude an area, create a backdrop for a perennial border, or provide a sanctuary for birds and wildlife. Randy will discuss selection, establishment, culture, and care of a broad selection of hedge and screen plants that can solve your privacy and screening problems.

LA31A

Randy Mardis

Saturday, February 21

1 to 3 p.m.

MBG - Ridgway Center

\$25 member, \$30 nonmember



Home Landscape Design

This course is specifically designed to help gardeners design their residential properties. Beginning with the basics of design, you will learn about front plantings, private areas, energy conservation, and plant selection for your site. You will be encouraged to develop a landscape plan for your own yard or garden, and to study plant material independently. You are invited to bring photos of your yard to the first session during which class supplies will also be discussed.

LA10A

Randy Mardis

5 Wednesdays: March 11, 18, 25; April 1, 8

7 to 9 p.m.

MBG - Missouri Room

\$120 member, \$140 nonmember

LA10B

John Bell

5 Tuesdays: April 14, 21, 28; May 5, 12

7 to 9 p.m.

MBG - Garden Room

\$120 member, \$140 nonmember

Redo Design

Sometimes an existing landscape needs some new ideas or a new direction. Terry will teach you what key areas to look for in your current landscape and how to renovate your yard using principles of design. Looking at form, texture, and color your landscape will have a new life.

LA46A

Terry Milne

Saturday, March 7

9 to 11 a.m.

STLCC - Wildwood; RM 304

\$25 member, \$30 nonmember

1.5 APLD CEUs

LA46B

Terry Milne

Wednesday, April 29

7 to 9 p.m.

MBG - Missouri Room

\$25 member, \$30 nonmember

1.5 APLD CEUs

NEW!

plant care



Perennials for Saturday Gardeners

Are you looking for great perennials that are easier to take care of and look great all season long? This class is for you. June Hutson, MBG Kemper Center Supervisor, will highlight low-maintenance perennials that make your garden look gorgeous without long hours of deadheading or staking. Through this wonderful slide presentation, she will show many perennials to choose from, including Russian sage, sedums, and heliopsis.

PC53A
June Hutson
Saturday, February 21
10 a.m. to noon
MBG - Ridgway Center
\$25 member, \$30 nonmember



Rain Gardens Demystified

Rain gardens are fast becoming a popular way to help alleviate the problems of storm water runoff and wet soil areas on your property. Learn what a rain garden is and how to implement the design into your landscape. An in-depth discussion of plants and installation techniques will be covered.

PC63A
Cindy Gilberg
Saturday, March 28
9 to 11 a.m.
STLCC - Wildwood; RM 304
\$25 member, \$30 nonmember

For more classes on this topic, see page 32

Four Seasons of Color with Shade Natives



Our woodland native plants are abundant with beauty and provide interest in different seasons. From delightful wildflowers to fall color to bright berries in winter, you are bound to find something that appeals. Both herbaceous plants and shrubs will be included in the discussion. Learn which ones add appeal and create a gratifying, four season native garden.

PC65A
Cindy Gilberg
Tuesday, April 14
7 to 9 p.m.
MBG - Missouri Room
\$25 member, \$30 nonmember
1.5 APLD CEUs

Growing and Using Herbs

This spring the St. Louis Herb Society returns to give you the very best instruction on how to grow herbs in St. Louis. Learn how to propagate, transplant, grow, and use some favorite culinary herbs, including basil, oregano, thyme, rosemary, and sage. As usual, you will sample herbal delights and receive starter herbs to take home.

PC12A
St. Louis Herb Society
Monday, May 18
9:30 a.m. to noon
MBG - Kemper Center Classroom
\$35 member, \$40 nonmember
1.5 APLD CEUs

Don't Kill Your Perennials

Some information about perennial maintenance in books is inappropriate for the Midwest perennial garden. In this hour and half walking tour in Kemper Center Gardens, June Hutson, MBG Kemper Center Supervisor, will highlight what to do this season and what not to do for the most commonly grown perennials. Tips will include pruning timing, common mistakes, mulching, and getting ready for the most roller coaster of all seasons Saint Louis winters. You will see first hand how to take care of perennials from our areas' top perennial expert.

PC64A
June Hutson
Monday, May 11
5:30 to 7 p.m.
MBG - Kemper Classroom
\$25 member, \$30 nonmember

PC64B
June Hutson
Tuesday, June 30
5:30 to 7 p.m.
MBG - Kemper Classroom
\$25 member, \$30 nonmember

Four Seasons of Color with Sun Natives



Our hardiest and showiest flowering native plants are right at home in the hot sun. Cindy will highlight both herbaceous plants and shrubs to plant in your sunny garden. From early spring through fall and into the winter, she will give many choice natives that will make your garden bountifully in bloom and always with seasonal interest.

PC66A
Cindy Gilberg
Thursday, May 14
7 to 9 p.m.
MBG - Botanical Room
\$25 member, \$30 nonmember



Growing Orchids

Have you resisted buying that intriguing orchid or are you unsure on how to encourage best bloom performance? Come and learn about light, temperature, and water requirements and maintenance practices such as fertilizing, dividing and repotting, identifying and controlling insects. This course is appropriate for both orchid novices and enthusiasts.

IP16A
Babs Wagner
Sunday, February 22
1 to 3 p.m.
MBG - Ridgway Center
\$25 member, \$30 nonmember



Terra-cotta Wind Chimes

Add music to your garden or patio with a wind chime made with your own two hands. In this fun workshop, you will get your hands dirty with terra-cotta clay. Using leaves for decorations, you will construct your wind chimes using simple hand-building techniques. We will provide all materials. No clay experience needed. Fired and stained pieces will be ready for pick up at the Kemper Center on May 20.

CR51A
Monday, May 4
7 to 9 p.m.
Mary Henderson
MBG - Botanical Room
\$40 member, \$50 nonmember

Behind the Scenes: The Research Greenhouse

Step into the greenhouse that few have the chance to see, the research greenhouse. Emily Colletti will give you a personal tour highlighting the Garden's comprehensive Aroid collection. A majority of the plants were collected from the tropical rainforests of South and Central America over the past four decades. This greenhouse is an important part of the Garden's conservation efforts. You will also have opportunity to plant a seedling from the Garden's own collection to take home and add to your collection.

IP35A
Emily Colletti
Sunday, February 22
1:30 to 3:00 p.m.
MBG - Meet at Ticket Counter
\$20 member, \$25 nonmember



Indoor Bonsai

Gain an understanding of the basic principles in this hands-on workshop on bonsai. Jack will guide you through the steps for creating an indoor bonsai plant. Styling, pruning, wiring, and overwintering, as well as plant selection and routine maintenance, will be presented. All materials will be provided.

IP19A
Jack Bacus
Saturday, March 14
9 a.m. to noon
MBG - Garden Room
\$55 member, \$65 nonmember

Behind the Scenes: the Orchid Range

Don't miss this opportunity to view the orchids the way few have seen. Babs Wagner will give you a guided tour of the orchid range in the Garden's main greenhouses. As you walk through the range, you will learn helpful tips on how she grows and cares for the Garden's outstanding orchid collection. Sign up early! Space is very limited.

IP22A
Babs Wagner
Wednesday, May 13
6 to 7:30 p.m.
MBG - meet at Ticket Counter
\$20 member, \$25 nonmember

Orchid Repotting Workshop

Are you concerned about repotting your overgrown orchid? Bring your orchid to class and Babs will show you the proper way to give your orchid more room. She will also talk about sterile pruning practices, culture information, and more. Please bring your own pruners. Soil and pots will be provided.

IP23A
Babs Wagner
Wednesday, May 20
7 to 9 p.m.
MBG - Garden Room
\$30 member, \$35 nonmember

behind-the-scenes



Behind the Scenes: Orchid Show

NEW!

Have you visited the Garden's orchid show and want to know how did they do that? Here is your special opportunity to hear from Pat Scace who designs and collaborates to produce the show. It takes over a year to produce and thousands of hours of hard work. Take a tour of the back room where props are made and learn about tussie mussies made during the Victorian Era then make your own to take home. Space is limited so register early to reserve your place.

GT56A
Pat Scace
Wednesday, March 4
1:30 to 3 p.m.
MBG - meet at the Ticket Counter
\$30 member, \$35 nonmember

Behind the Scenes: Sugar Creek Gardens

Are you looking for a unique perennial to make a corner of your garden stand out? Then look no further and come visit Sugar Creek Gardens. They specialize in rare and unusual plants. Take a behind the scenes tour and see their plant growing operation in progress. Learn how to pot up bare root plants and be the first to see what exceptional new perennials they are offering this spring. Hear Peggy Hoelting's top selections of low-maintenance perennials and shrubs for the St. Louis area. They also carry a great assortment of roses, vines, tropicals, and annuals. Let the experts at Sugar Creek Gardens show you how to have a beautiful and successful garden this year and for years to come.

GF30A
Peggy Hoelting
Saturday, March 14
10 to 11:30 a.m.
Meet at Sugar Creek Gardens, Kirkwood, MO
\$20 member, \$25 nonmember

Behind the Scenes: Fahr Greenhouse

Sustainability and great plants go hand in hand at Fahr Greenhouses, Inc. Take a tour to find what they use to make their soil mix more sustainable, what they use to heat their greenhouses, and how they grow great plants in their facilities. Hear Pat's top 10 plants to grow in the St. Louis region and tips on growing plants for all seasons.

GF33A
Pat Belrose
Saturday, March 28
10 to 11:30 a.m.
Meet at Fahr Greenhouses, MO
\$20 member, \$25 nonmember



Behind the Scenes: Floral Clock

NEW!

To celebrate the Garden's 150th anniversary, our horticulture staff has constructed a spectacular floral clock inspired by the Victorian Era. David Middleton will explain the process of designing the clock, show you the construction of the clock and painstaking maintenance while it is planted, and give you a sneak peak of what plants will be used for the next two seasons. Space is limited so register early to reserve your place.

GT41A
David Middleton
Tuesday, May 5
6 to 7:30 p.m.
MBG - Missouri Room
\$20 member, \$25 nonmember

Behind the Scenes: Bowood Farms

Take a behind scenes tour of the gardening jewel of the city; Bowood Farms Nursery. See first hand their sustainable practices including a walk around their green roof where they grow herbs for their cafe, tour the vegetable garden with fresh, seasonal produce, and see the first phases of their new Plants of Merit garden. This is a unique opportunity to see the workings of a nursery that strives to grow the best plants this side of the Mississippi River. Space is limited so sign up early.

GF32A
Ellen Barredo and Lizzy Rickard
Saturday, June 13
10 to 11:30 a.m.
Meet at Bowood Farms, MO
\$20 member, \$25 nonmember

garden tours

The Basics of Fair Trade with Tastings

Learn how Fair Trade works and how it can help create a greener environment, develop sustainability, and lead to greater social justice. In this series of classes we will explore the workings of Fair Trade and sample a selection of Fair Trade products. In the first session social entrepreneur Kellee K. Sikes will explain the basics of Fair Trade and we will sample exquisite chocolate from around the world. In the second class, chef, commodities broker, and coffee entrepreneur David Hilgeman will take us from coffee bush to cup on a journey of a coffee bean. You will learn and taste what makes coffee the world's most complex drink through aromas, flavors, and a coffee tasting. David will also instruct us on how professionals conduct a coffee cupping. We will conclude the series with Lori Allen a green boutique owner and green fashion guru as we learn the differences in social and environmental costs between conventional and green fashion and how Fair Trade clothing is helping to change the world. You will see, feel, and marvel at some of the luxurious and surprising clothing being made from sustainably grown bamboo, recycled, postconsumer plastic bottles, and other materials. We will sample some of the many fine Fair Trade teas available in St. Louis.

MI81A

Kellee Sikes and David Hilgeman
and Lori Allen
3 Wednesdays: April 22, 29; May 6
7 to 9 p.m.

MBG - Kemper Center Classroom
\$40 member, \$50 nonmember

Climatron and Temperate House Tour

NEW!

In the dead of winter join the curator of our world famous Climatron as she takes you on a personal tour of the Climatron pointing out its unique features and interesting plants and wildlife. From giant palms to delicate ferns, from coffee and cacao to flashy orchids and heliconias the sights and fragrances will enthrall. We will conclude our tour with a stop in the Shoeberg Temperate house to catch the early Mediterranean bloom.

GT57A

Deb Lalumondier

Saturday, February 21

10 a.m. to noon

MBG - meet at the Ticket Counter

\$25 member, \$30 nonmember



Drought-tolerant Shrubs and Perennials

NEW!

Start planting your yard and garden now so erratic rainfall and rising water prices don't leave you high and dry. In this educational walk Alan, author of the Garden's PlantFinder, will show you some of the best perennials and shrubs that can tolerate drought and still look great. Both choice native and nonnative plants will be covered as well as plants for sunny and shady locations. Learn to help conserve one of our most precious natural resources—water—by making wise plant choices.

GT14A

Alan Stentz

Wednesday, May 20

6 to 8 p.m.

MBG - Kemper Center Classroom

\$25 member, \$30 nonmember

Evening Stroll through the Woodland Garden

Enjoy a picturesque early evening walk through the English Woodland Garden. Learn about the many new plants and features as well as the tried and true plants for woodland gardens. Trial of a hardy camelia, landscaping with dogwoods, and a wealth of woodland perennials will be discussed. Identification and basic culture will also be covered.

GW17A

Larry Enjoki

Tuesday, April 7

5:30 to 7 p.m.

MBG - meet at Ticket Counter

\$20 member, \$25 nonmember



Historic and Important Trees of the Garden

NEW!

Over the past year Alan Stenz has been researching and writing descriptions of historic and important trees in the Garden for the Garden's online PlantFinder. In this walk he will point out those trees, which we believe were planted during the life of Henry Shaw and provide a wealth of fascinating facts about the origins of several of the interesting and important trees growing in the Garden. A true delight for the tree lover!

GW38A

Alan Stentz

Monday, June 15

7 to 9 p.m.

MBG - Kemper Center Classroom

\$25 member, \$30 nonmember

nature study

Birds and Birding in St. Louis

This class will be an introduction to bird study in the St. Louis area, and a preview of the regular spring and fall birding classes offered at the Garden. It will include (a) an overview of the birds themselves, focusing especially on about 20 local species that illustrate some of the fascinating aspects of birds, and (b) a discussion of birding as an activity: books, binoculars, techniques, organizations, places to go, and much more.

NS14A

William Rowe

Saturday, February 21

10 a.m. to noon



MBG - Ridgway Center

\$25 member, \$30 nonmember



Basics of Birding

If you enjoy the outdoors and want to learn more about finding, observing, and identifying birds, this course is for you. Though primarily aimed at beginners, it can also be a refresher course for those who have had some experience. The four evening classes will be devoted mainly to learning the local birds, including songs and calls, as well as visual marks. Some time will also be spent discussing field guides, binoculars, organizations, and where to go birding around St. Louis. The field trips will visit two good areas with a great diversity of spring birds. Participants supply their own transportation and lunch and should expect hikes of up to two miles. (Fieldtrip dates are subject to change.)

NS10A

William Rowe

4 Mondays: April 6, 13, 20, 27

7 to 9 p.m.

2 Field trips: Sunday, April 19 and

Saturday, May 2

Approximately 7 a.m. to 2 p.m.

MBG - Garden Room

\$170 member, \$190 nonmember

Birding by Ear

Whether you're wanting to expand upon your birding skills, naturalist skills, or creatively looking for ways to make use of your musically inclined ears in an outdoorsy way, 'Birding by Ear' will connect you to hidden rewards. Bird songs beautify our outdoor urban environment, especially during spring migration and summer. Being able to recognize individual birdsongs joins us to the songster sometimes visually and sometimes only with its song. Either way, familiarity with the songs expands our intimacy with nature. This class will assist you in providing some practical guidance to help you recognize and recall individual birdsongs. The first session will provide the classroom learning tools (at the Garden); the second session will meet at Forest Park for first-hand field experience.

NS32A

Bob Bailey

2 Tuesdays: April 21, 28

7 to 9 p.m.

MBG - Botanical Room

\$50 member, \$60 nonmember

Exploring Nature in the Garden and Forest Park

One need not head out of the city to find nature. Come, experience, and learn about the sights and sounds of nature in the Garden and in Forest Park. In this two-session course you will be guided in developing observation skills that will allow them to recognize and distinguish by sight and sound any wildlife that comes within our path, such as birds, frogs, toads, butterflies, dragonflies, damselflies, katydids, cicadas, and crickets. It is recommended that participants bring binoculars, a magnifying glass, and something to record their field notes. Our first adventure will be at the Garden and our second trip will be at Forest Park.

NS30A

Bob Bailey

2 Mondays: May 11, 18

7 to 9 p.m.

MBG - Botanical Room

\$50 member, \$60 nonmember

Recognizing the Songs of Insects

It's hard to imagine St. Louis summers without the buzzes of insects, but most of us fail to notice the subtle beauty and differentiated songs of these veiled songsters. Whether you're wanting to expand upon your naturalist skills or creatively looking for ways to make use of your musically inclined ears in an outdoorsy way, 'Recognizing the Songs of Insects' will connect you to this hidden world of urban wildlife. This class will provide some practical guidance to help you recognize and recall particular insect songs common to this area. The first half of the session will provide the classroom learning tools; the second half of the session will be in the Garden for first-hand field experience.

NS31A

Bob Bailey

2 Tuesdays: June 9, 16

7 to 9 p.m.

MBG - Botanical Room

\$50 member, \$60 nonmember

A Taste of Watercolor

Join with other students who want to recharge their creative batteries through watercolor. Judy will demonstrate simple techniques guiding students to complete their own painting. For beginning watercolorist this mini workshop will give a taste of the watercolor experience. Experienced students will find this a time to stimulate their creativity and strengthen their skills. Paints and paper will be provided. A materials list for other materials will be sent with your confirmation.

AR23A

Judy Seyfert

Saturday, February 21
1 to 3:30 p.m.

MBG - Kemper Center Classroom

\$40 member, \$50 nonmember



Watercolor In Bloom

Using the free flowing, spontaneous nature of watercolor, students will translate the beauty of spring into expressive, vibrant and colorful paintings. Techniques to be presented include painting wet into wet, glazing, negative and positive shape making. Students will also learn to make "painterly" paintings through design and the use of decisive, expressive brushstrokes. The focus of the class is to have fun while exploring impressions of spring through the medium of watercolor. All levels welcome.

AR20A

Judy Seyfert

8 Fridays: March 6, 13, 20, 27;

April 3, 10, 17; May 1

9:30 a.m. to noon

MBG - Kemper Center Classroom

\$170 member, \$190 nonmember

Botanical Illustration

During this course, students will complete a botanical illustration based on live herbarium material or photographs. You will design your own page, which will include the complete plant habit along with fruits and flowers. The final illustration will be in black and white using technical rapidographs and India ink. Participants should have some basic drawing skills. A materials list will be sent with your registration confirmation.

AR12A

Alba Arbelaez

6 Saturdays: March 14, 21, 28,

April 4, 18, 25

9:30 to noon

MBG - Monsanto Center

\$150 member, \$160 nonmember

Chinese Brush Painting Workshop

Chinese brush painting has a rich history of expressive strokes and capturing the essence of nature. In this introductory class, you will learn how to hold the brush properly, use the special implements, and how to use the various brush strokes. Both students who have never painted, as well as those who wish to take full advantage of the mediums potential are welcome to join. All supplies will be provided.

AR28A

Grace Lin

Saturday, March 14

9:30 a.m. to 12:30 p.m.

MBG - Kemper Center Classroom

\$75 member, \$85 nonmember

The Garden in Watercolor

Capture the beauty of the Garden in watercolor while you learn new techniques and composition skills. Through demonstrations and critiques, you will receive individual and group instruction. Beginning and advanced students are welcome. A materials list will be sent with your registration confirmation.

AR10A

Mary Dee Schmidt

8 Tuesdays: March 31; April 7, 14, 21, 28;

May 5, 12, 19,

9:30 a.m. to noon

MBG - Kemper Classroom

\$170 member, \$190 nonmember

Sketching the Garden

Sketching is a wonderful skill to learn whether you travel or want to record a flower in your garden. Working in the Garden, Jaclyn will teach you how to take a pencil or pen and capture what you see. With simple composition tips, shading techniques, and noting highlights, you will learn how easy and fun drawing can be when you relax and don't sweat the unneeded details. In event of inclement weather, the class will sketch from live plant still lifes in the classroom. A materials list will be sent with your confirmation.

AR74A

Jaclyn Lawson

8 Wednesdays: April 1, 8, 15, 29;

May 6, 13, 20, 27

9:30 am to noon

MBG - Kemper Center Classroom

\$170 member, \$190 nonmember

Fruits, Flowers, and Insects

This indoor drawing and painting workshop focused on the realistic portrayal of fruit, flowers, insects, and nature's curiosities. International natural science illustrator Cynthia Padilla, teaches the principles of accurate observation, mixing colors to match, graceful brushstroke, and purposeful composition; all in a relaxed encouraging manner. Demonstrations are in wax based colored pencil and aqueous media but other mediums are welcome. A supply list will be sent with your confirmation. No refunds given after April 24.

AR25A

Cynthia Padilla

MBG - Kemper Classroom

Friday, May 8 and Saturday, May 9

9:30 a.m. to 3:30 p.m.

\$210 member, \$258 nonmember

Hands-on

Exploring Watercolor

Take time to have some creative fun and explore the dynamic, expressive world of watercolor. Through group and individual instruction, Judy will demonstrate classic watercolor tricks and techniques for making impressive paintings. Topics covered will include applying a wash, working wet on wet, paint-to-water ratio, textures, and mixing color. As the class progresses, students will learn how to simplify and design their own composition. Beginning and experienced students will find this a wonderful and exciting journey into creativity. All levels welcome.

AR73A

Judy Seyfert

4 Saturdays; May 30; June 6, 13, 20

9:30 a.m. to 12:15 p.m.

MBG - Kemper Center Classroom

\$115 member, \$130 nonmember

Hands-on

Gourd Birdhouse

Bring native songbirds into your garden by making a gourd birdhouse. As a nesting box, the gourd is perfect...lightweight and durable, slick, rainproof outer shell, and thermalinsulated walls. One need only cut a doorway and drain holes. In our birdhouse class, you will add some refinements to enhance the comfort of the occupants and longevity of the house. Various techniques for decorating will be covered and finishing methods will be discussed. All tools and supplies for preparing the basic birdhouse will be provided. A materials list for suggested decoration will be sent with your confirmation.

CR68A

Lynne Slack

Saturday, March 7

2:30 to 4:30 p.m.

MBG - Garden Room

\$40 member, \$45 nonmember

Hands-on

floral design

A Spring Floral Arrangement

Come and make a wonderful arrangement of spring flowers for a party, to give as a gift, or to just enjoy in your own home! Learn about color, texture, line and other elements of floral design. We will also discuss the tools of the trade and basic techniques. All materials will be provided to make this wonderful spring arrangement.

FD29A

Jennifer Smith

Saturday, February 21

10 a.m. to noon

MBG - Ridgway Center

\$45 member, \$50 nonmember

 **Blitz**
Hands-on

Country Flower Arranging

Learn about some easy-to-grow perennials and annuals that are perfect for a cutting garden you can enjoy throughout the season. Handouts will be provided with lists of flowers and techniques for cutting and arranging. Try your hand at creating a take home floral arrangement from a variety of country flowers and greenery picked from Heinz Gardens. By using focus flowers, filler material, and accents, you can design a one-of-a-kind arrangement to beautify your home for a week. All materials are provided.

FD31A

Sue Heinz

Tuesday, June 30

7 to 9 p.m.

MBG - Botanical Room

\$45 member, \$50 nonmember

Hands-on

A Spring Wreath Techniques Class

Learn the basic techniques used in making dried wreaths while creating a stunning spring wreath for use on your door or indoors. Carol will show you the various techniques used in attaching materials to a grapevine wreath, such as wiring, hot gluing, using florist tape, and bowmaking. Using the techniques taught, you will make your own wreath to take home. All materials supplied. Feel free to bring any special items you have that you would like to include on your wreath.

CR45A

Carol Valenta

Thursday, March 19

7 to 9 p.m.

MBG - Botanical Room

\$40 member, \$45 nonmember

Hands-on

Handmade Papermaking

Transform garden plants into beautiful sheets of paper! Using hosta, daylily, and other plant fibers, you will learn simple techniques you can use at home to turn your garden plants into unique sheets of paper for stationery, cards, and book arts. Beginning with processing the plants from harvest, to cooking, to macerating the fibers, you will learn how to pull sheets of paper from a watery vat of plant fibers with a mould and deckle in this hands-on class. You will make several sheets of paper in class to take home. All materials provided.

CR25A

Elizabeth Adams Marks

Saturday, March 21

9:30 a.m. to 12:30 p.m.

MBG - Kemper Center Classroom

\$48 member, \$58 nonmember

Hands-on

Silver Leaf Pendant

Transform a garden leaf into a beautiful pure silver pendant. This wearable piece of nature is accomplished using the paste form of Precious Metal Clay. Instructor Claire Taylor will guide you in applying this unique paste to your choice of a real leaf. After instructor firing in class, you will finish your piece to wear home. No experience needed. Materials includes enough silver clay for you to make one to three pendants depending upon size. Please bring a bagged lunch. All other materials supplied. Registration deadline is Friday, March 27.

CR49A

Claire Taylor

Saturday, April 4

10 a.m. to 2 p.m.

MBG - Kemper Center Classroom

\$65 member, \$75 nonmember

Hands-on

Carving Shells and Scrolls

Learn the basic wood carving of shells and scrolls from master woodcarver Boris Khechoyan. In a creative mixture of lecture, demonstrations and hands-on carving you will learn the anatomy of wood, the various tools and how to use them; and the steps of creating proper perspective, proportion and proper symmetry. By the end of this all-day class you will come away with a beautiful handcrafted work of art made by your own hands under the guidance of a world renowned master woodcarver. Wood for the project will be provided. Bring your own carving tools if you have them or you may rent them from the instructor for \$70, which may be applied to their purchase at the end of the day if you wish. (Sets cost between \$310-350.) A recommended tools list will be sent with your registration confirmation but if you do not currently have tools, the instructor recommends you rent or purchase tools in class.

CR77A

Boris Khechoyan

Saturday, May 2

8 a.m. to 4:30 p.m.

MBG - Garden Room

\$100 member, \$125 nonmember

Hands-on

Spring Chip-carving Basics

Spring flowers, greens and grasses from our garden make fine, easy subjects for linear cuts of chip-carving. A sharp chip knife will be provided for use to make all your chip cuts in the basswood. No experience necessary. All materials provided. Bonnie will teach you how to keep the chip knife sharp for a clean cut. *Space is very limited.*

CR53A

Bonnie Rasmussen

Tuesday, March 24

6 to 9 p.m.

MBG - Missouri Room

\$70 member, \$80 nonmember

Hands-on

DIY: Knitted Market Bag

Make a reusable knitted market bag just in time for farmers' market season. Suzanne will teach you the basic knit and purl stitches, how to pick up stitches and do yarn overs plus read a pattern. With her troubleshooting expertise, you will completed your bag and have the confidence to make other projects. For experienced knitters, you can knit along at your own pace with help at hand. A material list will be sent with your confirmation.

CR62A

Suzanne Hirth

3 Mondays: May 4, 11, 18

7 to 9 p.m.

MBG - Garden Room

\$75 member, \$85 nonmember

Hands-on

DIY: Crocheted Market Bag

Learn a new skill or refresh an old one while saving the world from another plastic bag. Suzanne will teach you how to read a pattern, the basic crochet stitches, and how to pick up stitches. With hands-on help and trouble shooting expertise, you will completed your bag and have the confidence to make other projects. For experienced crocheters, you can crochet along and get a refresher on basic skills. A material list will be sent with your confirmation.

CR63A

Suzanne Hirth

3 Saturdays: June 6, 13, 20

9 to 11 a.m.

MBG - Garden Room

\$75 member, \$85 nonmember

Hands-on

photography

Garden Photography Workshop

If you are looking to add a little more snap to your snapshot then this class is for you. From children to vacation photos and everything in between, changing a few little things make a big difference. Scott Avetta will highlight things to include and to exclude in the frame to give your images a 'WOW' factor. He will touch on composition, lighting, color, and more. From point and shoot to digital, this introductory class will focus on some easy tricks to improve your photography.

PH21A

Scott Avetta

Saturday, February 21

1 to 3 p.m.

MBG - Ridgway Center

\$25 member, \$30 nonmember



Basic Photography

In this multi-session, hands-on course you will have the opportunity to develop the skills of a photographer and explore the functions of your camera. You will learn about composition, lighting, shutter speed, aperture (f-stops), depth-of-field, and terminology; all are crucial to taking exceptional pictures. The course will be appropriate for both novice and intermediate students. Participants should bring a 35mm camera (either film or digital) to the first session.

PH10A

Scott Avetta

6 Wednesdays: April 1, 8, 15, 22, 29; May 6

7 to 9 p.m.

Photo Shoot: Sunday, April 19

7 to 11 a.m.

MBG - Botanical Room

\$170 member, \$190 nonmember

Close-up Photography

In this intermediate course we will discuss subject selection and explore its many possibilities for dramatic results using a 35mm camera. Learn to maximize your equipment and to utilize other close up options (close-up rings, extension tubes, etc) to improve your photographs. The critical element of light and options to create a scene with reflectors and/or diffusers will be included. The use of a tripod and cable releases is highly recommended.

PH20A

Scott Avetta

3 Mondays: April 27, May 4, 11

7 to 9 p.m.

Photo Shoot: Sunday, May 3

7 to 11 a.m.

MBG - Botanical Room

\$125 member, \$145 nonmember

Tai Chi/ Chi Gong

Learn to access the harmony and vibrancy of nature through the gentle movement and breathing techniques of Tai Chi and Chi Gong. These ancient Chinese arts have been used for centuries to channel the body's inner force called "Chi" to enhance vitality and promote selfhealing. Practiced in the natural beauty of the Garden grounds, participants will develop a higher sense of awareness, relaxation, and inner vitality. Hun Yuan Tai Chi and Chi Gong's focus on gentle movement and relaxation makes it suitable for young and old alike. Please wear loose, comfortable clothing appropriate for outdoor practice.

MI61A

J. Justin Meehan

4 Sundays: May 3, 10, 17, 31:

10:30 a.m. to noon and

Tuesday, May 26; 6:30 to 8 p.m.

MBG - Garden Room

\$110 member, \$130 nonmember

Digital Photography: Beginner's Next Step

In this beginner's course, Dave will cover basic digital photography techniques to get the most out of your camera. He will also cover composing a picture and making adjustments for different lighting situations. To round out the class, Dave will demonstrate Adobe Elements software for photo editing.

PH25A

Dave McWhirter

5 Thursdays: April 2, 9, 16, 23, 30

7 to 9 p.m.

MBG - Missouri Room

\$125 member, \$145 nonmember

Intermediate Photography III

In this multi-session, hands-on course, you will have the opportunity to develop the skills of a professional photographer. You will learn about seeing and creativity through lecture and a Garden field trip. We will spend time on setups and interactive critiques. Participants should know the basic functions of a 35mm system. The use of a tripod is highly recommended.

PH13A

Scott Avetta

4 Mondays: May 13, 20, 27 and June 3

7 to 9 p.m.

Photo Shoots: May 17 and 24

7 to 11 a.m.

MBG - Botanical Room

\$170 member, \$190 nonmember



Photography Workshop with Visiting Artist Stewart Halperin

For almost 40 years St. Louis based photographer Stewart D. Halperin has traveled the world with his cameras. His work has taken him to all corners of the globe, spanning over ninety countries. While nature photography will be an element in this workshop the main focus will be gaining an understanding of what constitutes composition in photography. The two-day workshop will include lecture, audiovisuals, critiques of work submitted prior to the start of the workshop, as well as shooting during the course of workshop. Shooting assignments will be both within the Garden as well as other locations. Halperin's goal is to inspire each person to develop their own vision of the world around them and to form images through thoughtful composition. A working knowledge of your camera is required. No refund given after May 10.

PH32A
Stewart Halperin
MBG - Kemper Classroom
8 a.m. to 4 p.m.
Saturday, May 16 and Sunday, May 17
\$210 member, \$258 nonmember



Photography Workshop with Visiting Artist Linda Rutenberg

Experience a rare opportunity to have the Climatron® as your "studio" after dark, with international photographer and educator Linda Rutenberg. Linda will demonstrate her unique lighting techniques and will assist you in learning about the unique and mysterious world of photographing flowers at night. Don't miss this extraordinary course. This exclusive workshop is limited to ten participants, so register early. Experience with photography is required. A tripod and camping flashlight (non LED) are needed for the course. No refund given after March 1.

PH31A
Linda Rutenberg
Friday, March 6, 6 to 10 p.m. and
Saturday, March 7, 1 to 4 p.m.
MBG - Kemper Classroom
\$210 member, \$258 nonmember

NEW!

What is that Particular Flavor?

What exactly do leather or tobacco or black currants smell like or taste like in a red wine? People use these terms to describe certain red wines but how do you learn to pick out these and other specific flavors in wines. In this class we will become acquainted with a variety of flavors found in red and white wines, one by one, individually in wine samples. Sniff the sample then see if you can pick out the flavor in commercial wine.

WB25A
Hank Johnson
Wednesday, April 1
7 to 9 p.m.
MBG - Kemper Center Classroom
\$40 member, \$45 nonmember

Fine Wines for \$10 or less

Discover the wonderful world of inexpensive wines. Tom will talk about his favorites and the variety of inexpensive wines available. Taste and believe for yourself that wine can have rich flavor for not much money.

WB90A
Thomas VanSchaik
Tuesday, April 7
7 to 9 p.m.
MBG - Kemper Center Classroom
\$40 member, \$45 nonmember

Tour of American Wines

How does a Chardonnay from Long Island differ from one from Lubbock or Albuquerque or Yakima? With wine now being produced in all fifty states, what are the regional differences? What effect does this thing wine people call "Terroir" have on the taste of wine from different parts of the country? Come, taste and compare award winning wines from the US - North, South, East and West.

WB30A
Hank Johnson
Tuesday, April 21
7 to 9 p.m.
MBG - Kemper Center Classroom
\$40 member, \$45 nonmember

NEW!

cooking

Cake Decorating for Beginners

Learn the basic techniques of cake decorating demonstrated in this fun class for beginners. You will learn how to ice and smooth a cake, add a simple border, and make a buttercream rose. Also covered will be the tools of the trade, how to decorate cookies, fill a cupcake, and decorate with figure piping. This class will get you off to great adventures in decorating!

CK42A
Cynthia Sciaroni
Saturday, February 21
1 to 3 p.m.

MBG - Ridgway Center
\$30 member, \$35 nonmember



Knife Skills

Learn how efficient cutting techniques and knife use can make the art of food preparation safer and more enjoyable. The instructors will cover a range of topics, including knife selection, care, sharpening, cutting techniques, and safety. Ample time will be allowed for you to practice the skills of slicing, dicing, julienning, chopping, and mincing. Bring a paring knife, a chef's knife (if you have one) and an apron, if you wish.

CK19A
Linda Whitten and Glenn Kopp
Monday, March 16
7 to 9:30 p.m.

MBG - Kemper Center Classroom
\$35 member, \$40 nonmember

Scents of Spring

Incorporate fresh spring flavors and aromas into your budgetminded menus. Learn new ways to use spring greens, asparagus, strawberries, rhubarb, and other seasonal ingredients while watching your pennies.

CK34A
Linda Whitten
Monday, March 30
7 to 9 p.m.

MBG - Kemper Center Classroom
\$35 member, \$40 nonmember

Natural History of Chocolate

Calling all chocoholics! Learn about the history of chocolate, how this decadent treat is made, and the various types of chocolate. A variety of chocolate will be sampled throughout the program, plus each participant receives treats to take home. Door prizes will be given throughout the class. For the true chocolate lover in everyone!

CK90A
Kim Petzing
Monday, March 30
7 to 9 p.m.

MBG - Botanical Room
\$35 member, \$40 nonmember

Spring Farmer's Market

Learn ways to use the every growing abundance of fresh local spring goods available at local farmer's markets in a variety of recipes that will add fresh, local flavor to your spring menu. Lana will feature local cracker breads, goat cheese, honey, and fresh beef and pork products with seasonal berries, greens, and staples. She will explore quick and easy salads, wraps, and dressings along with pointer on how to grill and roast these products to perfection for perfect spring meals.

CK65A
Lana Shepek
Monday, April 20
7 to 9 p.m.

MBG - Kemper Center Classroom
\$35 member, \$40 nonmember

Rub, Rub, Yum! Grilling Secrets

Juicy chicken, succulent seafood, and more can be made on a grill with a few tips on rubs and sauces. Lynn Heermann, head chef of the Garden's Sassafras cafe, will share with you his favorite rub recipes and wonderful sauces to make your grilling sizzle this season. No need to heat up the house this summer, he will even show you how to make grilled bread and fresh fruit to complement your meal.

CK56A
Lynn Heermann
Tuesday, April 28
7 to 9 p.m.
MBG - Kemper Center Classroom
\$35 member, \$40 nonmember

Sharing Dinner with Mom

Enjoy an evening with your mother while learning new recipes to celebrate the spring. Vicki will start with a simple yet satisfying appetizer candied pecans which can be made ahead and set out. Then she'll show you how to make a sophisticated stuffed chicken breast with roasted asparagus and wild rice salad incorporating strawberries and a lovely fruit vinaigrette. She will end the menu with beautiful phyllo cups with strawberry mousse. Priced for two.

CK41A
Vicki Bensinger
Wednesday, May 13
7 to 9:30 p.m.
MBG - Kemper Center Classroom
\$70 member, \$80 nonmember

Summer Grilling Sampler

Learn the finer points of turning grilling into a gourmet occasion. Bryan will share his technique for grilling fish perfectly and arouse your taste buds with tasty chicken and beef kabobs. We will round out the meal with a spring salad and grilled seasonal fruits for dessert. Come prepared to sample!

CK82A
Bryan Young
Tuesday, May 19
7 to 9 p.m.
MBG - Kemper Center Classroom
\$35 member, \$40 nonmember

Make Your Own Herbal Infusion

All the top chefs use herb infused oils and vinegars so why not make your own. In this hands-on class you will make your own herbal blends in distilled vinegars and olive oil with Chef D'Aun Carrell. She will also highlight how to make wine vinegar from left over wine. As your mixtures steep, sample herb combinations dipped in french bread. All materials will be supplied for you to make two half pints to take home.

CK89A
D'Aun Carrell
Monday, June 29
7 to 9 p.m.
MBG - Kemper Center Classroom
\$40 member, \$45 nonmember

THE DIABETIC GOURMET

What do you get when you team up a CIA trained chef with two registered dietitians? It's obvious gourmet food for people with diabetes!

In this class Gerard Campione, executive chef at St. John's Mercy Medical Center and former executive chef at Sunset Country Club, is teaming up with the Medical Center's community dietitians Mary Ellen Idstein and Marjorie Clever to create a fabulous meal appropriate for someone with diabetes. For inspiration Chef Campione will be drawing upon the creative recipes of noted chefs such as Charlie Trotter and others to create a gourmet meal using common and "exotic" foods. Throughout the class Mary Ellen and Marjorie will explain the basics of sound nutrition and how a person with diabetes can learn to adapt or select appropriate gourmet recipes without having to rely upon a special "diabetic" cookbook. Your specific cooking, nutrition, and diabetes questions will be answered. Since current dietary recommendations for controlling diabetes (and maybe even helping to preventing it) follows the same basic guidelines as for a healthy menu (with a few special modifications) this class will also be appropriate for someone who currently doesn't have diabetes but wants to learn how to eat healthy.

Don't miss this wonderful opportunity to discover some great "new" foods and healthy recipes and learn the guidelines you should follow to eat well and prosper even if you have diabetes!

CK95A
Gerard Campione, Mary Ellen Idstein, and Marjorie Clever
Tuesday, March 24
7 to 9 p.m.
MBG - Kemper Center Classroom
\$35 member, \$40 nonmember

ethnic cuisine

Making Sushi

Whether serving for appetizers or as a theme for a dinner party, sushi is the perfect food. Learn to make wonderful sushi in just two hours. Vicki will teach you techniques for making the perfect rice and several different types of sushi rolls in this fun, hands-on class. If you are unsure about eating raw fish but still want to enjoy sushi, this class is for you as we will be using cooked fish and fresh vegetables.

EC11A
Vicki Bensinger
Wednesday, April 15
7 to 9 p.m.
MBG - Kemper Center Classroom
\$40 member, \$45 nonmember

Dim Sum

Start a new tradition at your home by serving Dim Sum. Translated to heart touchers, these wonderful, small dishes are typically served with tea on weekends starting in the late morning to lunch. Theresa will explain the tradition and demonstrate the preparation of crispy shrimp balls, four seasons dumpling, curry beef puffs, pot stickers, and spring rolls.

EC29A
Theresa Liu
Sunday, April 19
1 to 3 p.m.
MBG - Kemper Center Classroom
\$35 member, \$40 nonmember

Best of Punjabi Home Cooking

NEW!

In the fifth class of this series, Aman Aulakh will demonstrate how to cook several classic dishes from the north Indian province of Punjab. Learn how to prepare the main entrée, *Anda Curry* (eggs with spicy curry sauce), and several side dishes including *Aloo Palak* (potatoes and spinach), *Gagar Matar* (carrots with peas), and chawal (Basmati rice). *Kheer* (rice pudding) with a cup of hot chai is the perfect dessert combo to end this delicious Punjabi meal.

EC33A
Aman Aulakh
Saturday, March 28
10 a.m. to noon
MBG - Kemper Center Classroom
\$35 member, \$40 nonmember

special classes

An Introduction to the History of Printing and Books

This class will use the extraordinary collection of rare books held by the Missouri Botanical Garden Library to teach how books were made between the years 1500 and 1800. The Missouri Botanical Garden owns several thousand books and illustrations created during these first three centuries of printing. This class will take an extended, hands-on look at examples from this collection to learn about paper making, printing presses and type, illustration processes and book binding. Lunch provided.

MI43A
Doug Holland
Saturday, April 18
10 a.m. to 4 p.m.
MBG - Monsanto Center
\$65 member, \$75 nonmember

Forest Park, from Park Creation to Now

From glaciers establishing the region's topography to present day renovations, you will learn many facts and see amazing pictures of history and flora of Forest Park. This class will span many decades including how the park was established and dedicated, see photos of Worlds' Fair of 1904 preparations and event and what lead to the decline of park in the mid 20th century. Finally the class will wrap up with the renaissance and what is going on today including Government Hill and World's Fair Pavilion, Jewel Box, and Pagoda Circle.

MI36A
Jack Lane
Monday, April 20
7 to 9 p.m.
MBG - Missouri Room
\$25 member, \$30 nonmember

A Day of Chinese Culture

Join us for an extraordinary day of Chinese culture; our day will begin with unique insights from the curator of the Saint Louis Art Museum's exhibition Power and Glory the Court Arts of China's Ming Dynasty, then on the bus with a stop for lunch and conversation before proceeding to the Missouri Botanical Garden for a viewing with the curator of The Margaret Grigg Nanjing Friendship Garden. Missouri Botanical Garden and Saint Louis Art Museum members enjoy the same discount. Lunch is included.

Tour size is limited to 25 participants.
Saturday, April 18
10 am to 4 pm
Meet at Saint Louis Art Museum
\$60 member, \$80 nonmember
Call the Saint Louis Art Museum at
(314) 655-5298 to register.

registration information

Missouri Botanical Garden Adult Education • Spring 2009

Registration

Registration can be completed by using any of our easy methods:

- Mail the completed registration form with a check made payable to Missouri Botanical Garden or with your credit card information.
- Fax the completed registration form to (314) 577-9444.
- Phone us at (314) 577-9441 with your registration information Monday–Friday, 9 a.m. to 5 p.m.
- Register online at www.gardeninghelp.org

Note

Payment for fax, phone, and online registrations is by Visa, Discover, or MasterCard only.

Location

Classroom or outreach locations are listed with each course description. The Kemper Center classroom is a five-minute walk from the Ridgway Center through the Garden. See map on back for location of outreach sites.

Conveniently located off I-44, the Garden is easily accessible from the major highways in the area, even during the scheduled construction on I-64/40 in 2008–2009. Visit: www.thenewi64.org for up-to-date construction details.

Parking

Limited free parking is available on Garden grounds. Additional free parking is available 2 blocks west of the Garden in lots at the corner of Shaw and Vandeventer.

Accessibility

With advance notice, assistive listening devices for the hearing impaired are available for use in all education courses at the Garden. To guarantee availability, please call (314) 577-9441 five days prior to class.

Inclement Weather

Classes are held rain or shine. If in doubt, call (314) 577-0231. After 5 p.m., call (314) 577-0212.

Cancellations and Refunds

For a full refund or transfer you must notify us at least 4 days before the first class meeting; or, you may choose to send an alternate participant if you are unable to attend. For notifications received less than 4 days but prior to 5 p.m. on the business day (Monday to Friday) before the first class meeting, a 50% credit will be issued. A credit or refund cannot be issued for missed classes. In the event MBG must cancel a class, you will be notified by phone and receive a full refund.



at the Shaw Nature Reserve

Hwy 100 & I-44 (exit 253) • P.O. Box 38 • Gray Summit, MO 63039 • (636) 451-3512 • www.shawnature.org

Lunch or Dinner Tour of Shaw Nature Reserve

Gather 8 to 10 friends and schedule a luncheon or dinner tour of the Nature Reserve. Travel by the wilderness wagon for this progressive dinner. Hors d'oeuvres are on the terrace overlooking the Whitmire Wildflower Garden, dinner is by candlelight within strolling distance of the wetland and dessert is near the prairie. Luncheons occur in the midst of what's in bloom. For adults only.

Call Helen McCallie to schedule a lunch or dinner tour
(636) 451-3512 ext. 6075
Dinner tour for group is \$850
Luncheon tour for group is \$700
There is no discount for fewer people.

Basic Yoga

This 6-session class is an introduction to the practice of Hatha Yoga, teaching students to be aware of their bodies, breathing and thoughts, while improving alignment, muscle strength and flexibility, and balance in mind and body.

6 sessions: Wednesday, March 4 through April 8 or Wednesday, April 22 through May 27
6 to 7:30 p.m.
Rebecca Jones
Meet at the Carriage House
(Behind the Bascom House)
\$35 member, \$40 nonmember
(per 6-week session)

Tea and Daffodils

If nature cooperates, you will see thousands of fragrant daffodils while enjoying afternoon tea and sweets in the Nature Reserve's Carriage House. You will have the option to take a leisurely stroll through the daffodils and/or Whitmire Wildflower Garden with horticulturist Terri Brandt. Tables are assigned; please designate who will be at your table. Singles will be grouped together. For adults only.

Saturday, March 28
2 to 4 p.m.
Barb Troutman, Terri Brandt, and volunteers
Meet at the Carriage House
(Behind the Bascom House)
\$30 member, \$35 nonmember

Wednesday Walkers

Each Wednesday, sign in at the Visitor Center and pick up your map for the day. The walk averages 1½ to 2 hours, allowing time to stop, look, listen, and converse. At the end of 9 weeks you will have hiked most of the trails and made new friends. The final walk will be "Reward Wednesday". No reservations taken. Pay each time on arrival. For adults only.

Wednesday, April 1 through May 27
10 to 11:30 a.m.
Barb Troutman, Helen McCallie
Meet at the Visitor Center
\$1 member, \$4 nonmember,
\$3 nonmember senior

Arbor Day Tree Walk

Celebrate Arbor Day by learning more about some of Missouri's trees. Pick up your Brush Creek Trail Native Tree Guide and Shaw Nature Reserve Trail Map in the Visitor Center. Walk Brush Creek Trail seeking out the 18 tree species labeled there that correspond to those described in the guide. Self-guided. No reservations needed.

Missouri State Arbor Day, Friday, April 3 or
National Arbor Day, Friday, April 24
Any time between 8 a.m. and 4:30 p.m.
Start from the Visitor Center
\$1 member, \$4 nonmember

Spring Wildflower Walks

Join these informal, educational walks through the colorful spring season. The Nature Reserve's excellent trail system, winding through upland and bottomland forest, is an ideal place to enjoy the ephemeral spring wildflowers and other natural wonders. Bring a sack lunch. No reservations taken; pay on arrival.

6 Individual Tuesdays: April 7, 14, 21, 28,
May 5 and 12
Dick and Susan Russell, James Trager
9:30 a.m. to 1:30 p.m.
(option to leave at noon)
Meet at the Visitor Center
\$8 member, \$12 nonmember

Morning Bird Walks

In the early morning and during the height of spring migration, see and learn about the many bird species at Shaw Nature Reserve. Both beginning and intermediate birders are welcome. Bring binoculars and dress for moderate hiking. Sign up for any or all. Each will be different.

Three Individual Thursdays: April 16, 23, and 30
8 to 10:30 a.m.
Donald Hays
Meet at the Visitor Center
\$15 member, \$18 nonmember
(Register and pay for individual sessions by date)

adult classes

at the Shaw Nature Reserve



Bountiful Bluebells

In the Reserve's Meramec River bottomland a sea of Virginia bluebells blooms each spring. They are off the beaten path, but we will provide guides and transportation to get you as close as possible. You will still have to walk ¼ to 1 mile depending on road conditions. Wear sturdy shoes. Complimentary refreshments provided. Pay on arrival. Call now or at least a week ahead to reserve a spot. (636) 451-3512 ext. 6075

Friday, April 17

12:30 to 3 p.m.

SNR staff and volunteers

Meet at the Visitor Center

\$8 member, \$10 nonmember

Fly Fishing for Beginners

Join members of the Ozark Fly Fishers for one of these beginner classes. Learn about equipment needed to get started and basic fly tying and rod casting skills. Practice catch and release at Pinetum Lake where fishing is not normally allowed. All equipment provided. Bring a hat and eye protection such as sunglasses. This class is for men and women 16 years and up.

Sunday, April 19

8:30 a.m. to 12:30 p.m. or 1 to 5 p.m.

Wallis Warren and Ozark Fly Fishers

Meet at the Carriage House

(Behind the Bascom House)

\$21 member, \$24 nonmember

Basket Making

Create your own basket by learning basic weaving techniques and using natural materials. By early April, you will need to choose between making an Amy's, hearth, picnic, or round-bottomed basket (pictures will be available via email or land mail). Bring a sack lunch, wire cutters, or heavy scissors, awl, a dozen spring-type clothespins, a large towel, cloth (flexible) tape measure, pencil, and a container for soaking reed. All other materials provided.

Saturday, April 25

9 a.m. to 3 p.m.

Linda Brown

Meet at the Carriage House

(Behind the Bascom House)

\$40 member, \$46 nonmember

Hands-on

Wildflower Identification and Ecology

This course will focus on identification, relationships and habitats of wildflowers and native grasses of the season. Beginners, as well as serious students of wildflowers, will increase their knowledge and appreciation of the rich floral diversity of the Nature Reserve's woods, prairie and wetland. Come ready for moderate hiking with notebook in hand! Sign up for any or all sessions.

Saturday, April 25, May 23, June 20

9:30 a.m. to noon

Saturday, July 25, August 22,

6 to 8:30 p.m.

James Trager

Meet at the Visitor Center

\$18 member, \$21 nonmember

Tea on the Terrace

May is the perfect time to enjoy the beautiful Whitmire Wildflower Garden. Gather for tea and delectable desserts on the Carriage House Terrace overlooking the Whitmire Wildflower Garden. Tea will be followed by an optional guided garden tour. Tables are assigned so designate who will be in your group. Singles will be seated with other singles. For adults only.

Saturday, May 2

2 to 4 p.m.

Barb Troutman, Terri Brandt, and volunteers

Meet at Carriage House Terrace

(Behind the Bascom House)

\$30 member, \$35 nonmember

Mushrooms: From Backyard to Table

What is the difference between a mushroom and a toadstool? Where do they grow? Which ones can you safely eat? Through an open discussion, a brief lecture, followed by a session of collecting and identifying, participants will solve some of these mysteries. Bring a container for collecting and a mushroom from home to identify (optional). For adults only.

Sunday, May 3

1 to 4 p.m.

Ken Gilberg

Meet at the Visitor Center

\$17 member, \$20 nonmember

adult classes

at the Shaw Nature Reserve

Plein Air Landscape Painting

Come paint in the lovely Whitmire Wildflower Garden area. Lecture followed by individual instruction. Bring sketchbook, drawing pencils, eraser, stretched canvas, acrylic or oil paints, or secured paper on board for your watercolors, plus supplies for clean up. Easel recommended. In case of rain, you will work under cover of garden structures. For adults at any level of experience.

Saturday, May 16

1 to 4 p.m.

Mary Keilty

Carriage House (Behind the Bascom House)

\$25 member, \$28 nonmember

Trees of Missouri

Shaw Nature Reserve is blessed with a great variety of trees. This outdoor program will emphasize the native trees of Missouri, their identification by leaf, fruit, and bark characteristics, and their typical habitats. During this three-mile hike we will also search out some of the giant trees of the Reserve. Adults only.

Saturday, June 6

9 a.m. to noon

James Trager

Meet at the Visitor Center

\$18 member, \$21 nonmember



Native Plant School is a year-round series of mostly outdoor learning sessions in the Whitmire Wildflower Garden at Shaw Nature Reserve. They will cover various aspects of native home landscaping and prairie/savanna/wetland reestablishment. Please bring your questions, comments, photos, drawings, plant specimens, etc. for these three-hour discussion sessions. Scott Woodbury and guest experts will lead the discussions, hands-on tours and demonstrations. Participation from the audience is encouraged.



2009 Schedule

1 to 4 p.m.

All classes meet in classroom behind

Joseph H. Bascom House unless

otherwise noted

\$8 members, \$12 nonmembers

RSVP is required. Call Shaw Nature Reserve

at (636) 451-3512.

Fees paid at the Shaw Nature Reserve

Visitor Center upon arrival.

Native Landscaping / Part 1:

Planning and Design

Thursday, Feb. 12

Native Plant Propagation from Seed

Thursday, March 12

meet in the Green House

Native Landscaping / Part 2:

Planting and Maintenance

Thursday, April 9

Native Perennials and Grasses for

Landscaping / Part 1:

Spring Blooming

Thursday, April 16

Common Garden Weeds:

Control and ID

Thursday, May 14

Managing your Land for Quail and

other Grassland Birds

Friday, May 22, 8-10 a.m.

Rain Gardening and

Storm Water Runoff

Thursday, June 11

Native Perennials and Grasses for

Landscaping / Part 2: Summer Blooming

Thursday, July 9

Prairie & Savanna Reconstruction / Part 1: Site Prep and Seed Collecting

Thursday, Aug. 13

RSVP to Shaw Nature Reserve at (636) 451-3512 ext. 0. If we need to schedule an overflow day it will be the next day (Friday). Please pay at the Visitor Center the day of the class: \$8 MBG and SNR member, \$12 nonmember

adult & family classes

at the Shaw Nature Reserve

On the Wagon

Enjoy the spring wildflowers with a narrated 3-mile tour aboard Shaw Nature Reserve's comfy Wilderness Wagon. Disembark at the Crescent Knoll scenic overlook and the historic Bascom House and Whitmire Wildflower Garden areas for guided walking tours. Then, "all aboard" for the return trip to your vehicle. Limited seating. Must pre-register.

Tuesday, May 19 or Tuesday, May 26
1 to 3 p.m.

SNR staff and volunteers
Meet at the Visitor Center
\$5 member, \$6 nonmember
(each adult or child)

Spring Peeper Musical

The Reserve's wetland attracts 1000's of frogs during the mating season. The thunderous chorus must be heard to be believed. Join a guide for this frantic frog festival of song. Bring flashlight to view frogs' light-reflecting throat sacks used to produce distinctive songs. Phone (636) 451-3512 ext. 6075 or email Helen. McCallie@mobot.org to get your name on the call list. For families with children 5 years and up.

Evenings, usually late February thru mid-March (It's up to the frogs and toads)
Meet at the Visitor Center
\$5 member, \$7 nonmember
(each child or adult)

Wilderness Wagon and Bus Tours

Enjoy the beauty of spring with a guided tour of Shaw Nature Reserve for your group. Reserve the Wilderness Wagon, an open-sided vehicle accommodating 28 people, or arrange for a tour on your bus. A naturalist will accompany you on a 3-mile ride through the Reserve and, if you wish, lead you on a short walk along one of the scenic trails. Our roads can accommodate buses with or without a guide. Fees vary. Call for prices. The wagon is available for the general public without reservations on Saturday and Sunday afternoons, May through June. Wagon and bus tours leave from the Visitor Center.

1-hour group tour
Weekdays or Saturday mornings
\$6 each (\$75 minimum)
45-minute general public tours
Saturday and Sunday afternoons
May 2 through June 28
1, 2, and 3 p.m.
\$1 plus general admission

Backyard Wildlife Habitat Building Project

Work in our woodshop assembling your choice of 3 out of 5 projects. Choose from Bluebird House, Squirrel Den, Wren House, Bird Feeder, or Butterfly House. Information provided for where to best place your completed projects. (Bring cordless drill if you have one) Indicate your 3 project choices on the registration form. For families with children 8 years and up.

Saturday, March 21
9 a.m. to noon
Jeff Smith
Meet at the Visitor Center
\$75 member per family (3 kits total),
\$85 nonmember
Additional kits available, \$15 each

Tale Travelers

Kids, gather your family, walking shoes, water bottle and backpack for an adventure-filled day at the Shaw Nature Reserve! Listen to nature stories, create cool crafts and explore the outdoors as "Tale Travelers." Come for an hour or stay all day. Activities are designed for children ages 3 to 12 but can be enjoyed by all.

Saturday, April 18
10 a.m. to 2 p.m.
Dana Brown Overnight Center area
Free, members and children ages 12 and under
\$3 adults, \$2 seniors, nonmembers
RSVP at least one week in advance by calling (636) 451-3512 ext. 6075

Rustic Garden Bench Workshop

Assemble your own rustic garden bench, based on environmentalist Aldo Leopold's design. Tools and materials provided. Bench pieces will be pre-cut and ready to sand and assemble with a cordless drill. Take home a free copy of the bench plans. For adults or families with children 10 years and up. If possible, bring a cordless drill.

Saturday, May 9
9 a.m. to noon
Jeff Smith
Meet at the Visitor Center
\$115 member, \$130 nonmember
(one bench per 1-2 persons)

family classes

at the Shaw Nature Reserve

ANTS— “Bugs” with Family Values

Join entomologist Dr. James Trager for an introduction to world and Missouri ant diversity and natural history, a discussion of invasive species, and outdoor observation of ants in their natural habitats. You may wish to bring a good hand lens (jeweler's loupe) if you have one. For adults and families with children age 12 and up.

Thursday, May 28
4 to 6:30 p.m.
James Trager
Meet at the Visitor Center
\$12 member, \$14 nonmember
(each adult or child)

First Time Fishing for Kids

Fishing is not normally allowed at the Reserve, but the Missouri Department of Conservation is teaming up with Shaw Nature Reserve to provide a special fishing experience for first time or inexperienced young anglers 6 to 12 years old. Equipment, bait and assistance will be provided. **At least one adult should attend for every two children. Fishing is for kids only.** Refreshments provided.

Saturday, June 6
9 to 11:30 a.m.
SNR and MDC
Meet at the Visitor Center
\$10 member's child,
\$12 nonmember's child
No charge for accompanying adults

Tom Sawyer Adventure Hike

Come spend the morning at Shaw Nature Reserve pretending to be Tom Sawyer. We will build a cane pole fishing rod, catch frogs, and hear stories about Tom Sawyer's adventures. Bib overalls and straw hats are optional. (Becky Thatcher is also invited). For families with children 8 years and up.

Saturday, June 6
9:30 a.m. to 12:30 p.m.
Tim Slape
Meet at the Visitor Center \$10 members,
\$12 nonmembers (each adult or child)

Nighttime Insect Safari

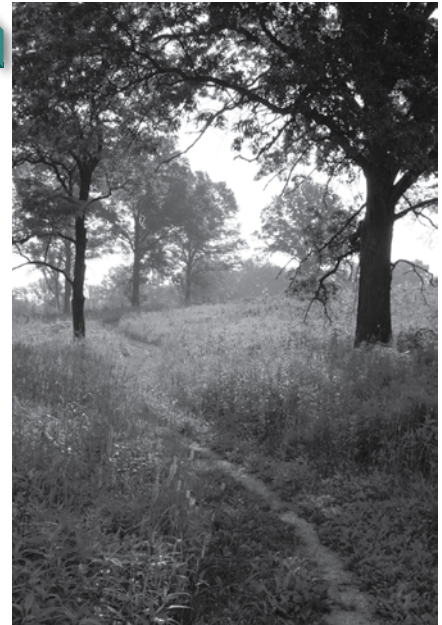
Explore the fascinating world of night-flying insects. Marvel at their diversity and adaptations as we lure these mysterious creatures with black lights. **This class is for adults and families with children 8 years and older.** Come prepared for moderate hiking and wear dark clothing.

Saturday, June 13
8:30 to 11 p.m.
James Trager
Meet at the Visitor Center
\$10 member, \$12 nonmember
(each adult or child)

Dog-Days Butterfly Ramble

The time to see the most butterflies is the hot summer days of July and August. Join entomologist Dr. James Trager in some of the best butterfly habitat at Shaw Nature Reserve. Learn about their relationships to their favorite flowers, the food plants of their caterpillars, their amazing migrations, and what happens during the winter to those that don't migrate. **For families with children 8 years and older.**

Saturday, July 25
8:30 to 11 a.m.
James Trager
Meet at the Visitor Center
\$10 member, \$12 nonmember



family self-guided opportunities at SNR

For those wanting to explore the Nature Reserve with your family using self-guided activities designed to enhance your visit, we offer a variety of trail activity guides, backpacks and adventure maps that can be picked up at the Visitor Center. Some fees may apply.

- Nature Explore Classroom (for ages 2–10)
- Little Acorn Trail (for ages 3–6)
- Wet and Wild, a lake study field guide (for ages 7–12)
- Family backpacks on birds
- Various trail guides and adventure maps

family classes

at the Shaw Nature Reserve

MDC DISCOVER nature FAMILIES

During your visit to Shaw Nature Reserve join us for some short informal activities that will be conducted between 9:30 a.m. and noon on the third Saturday during March, April, and May. Spend 5 minutes or a half hour with us. A program of the Missouri Department Conservation.

Looking for Spring in the Whitmire Wildflower Garden

Go on a scavenger hunt, look for signs of spring, see what nature babies you might find in the garden. Get directions at the Visitor Center.

Saturday, March 21
9:30 a.m. to noon

Tale Traveler

See page 25 for more information.

Saturday, April 18
10 a.m. to 2 p.m.

Wetlands are Wonderful

May is wetland month. Have you discovered the wetlands at Shaw Nature Reserve? Get directions at the Visitor Center.

Saturday, May 16
9:30 a.m. to noon



Garden Buds at Shaw Nature Reserve (ages 3–5)

Introduce your child to the wonder of Shaw Nature Reserve. Each 2½ hour class will include hands-on activities, a story, snack, and a craft. Sessions are limited to 10 children. To ensure the highest quality experience for all participants, each child must be accompanied by an adult, and children under the age limit will not be admitted.

9:30 a.m. to noon
Karen Bryan
Meet at Visitor Center

Three class series: \$50 (\$45 for members)
Individual Class: \$18 (\$16 for members)
Advance registration is required.

It Looks Like Spilled Milk

Spring weather can be a little crazy. Come join us as we look and learn about weather. We will take a look at different clouds and the wacky weather that is around us in the spring.

Tuesday, March 3

Tree Hokey-Pokey

Come and join us as we explore the trees here at Shaw Nature Reserve. We will discover the different parts of trees in a fun hands-on way.

Tuesday, April 7

Blooming Fun!

Journey along with us, as we explore the Whitmire Wildflower Garden. We will look for signs of spring and all the fun changes that take place in the Garden. You will be able to take a little bit of spring home with you.

Tuesday, May 5

snr registration

Please use registration form on page 37.
For questions, call (636) 451-3512.

overnight classes

at the Shaw Nature Reserve

GPS Your Way through Shaw Nature Reserve History

NEW!

Learn to use a GPS (global positioning system) to locate landmarks and explore the Reserve's rich and diverse history. Bring your GPS unit or use one of ours to follow a set of way points. Accommodations dormitory style in historic log lodges. Breakfast included. (1 adult per 1 child) for children ages 8 and up. Map and list of what to bring sent prior to overnight.

Friday, March 27, 7 p.m.
to Saturday, March 28, 11 a.m.
Aileen Abbott
Dana Brown Overnight Center
\$ 50 member, \$57 nonmember
(each adult or child)

Father and Son Fish 'n' Float

Saturday, learn to maneuver and cast from a canoe. Sunday, ride a shuttle to Robertsville State Park for a guided canoe float and fishing trip down the Meramec River. Take out and shuttle back from Nature Reserve gravel bar. Sixteen years and up must have valid Missouri State Fishing License. **For fathers with sons 10 years to adult.** Lodging, equipment and meals provided. Map and personal needs list sent prior to program.

Saturday, May 16, 1 p.m. to
Sunday, May 17, 3 p.m.
Tim Slape
Dana Brown Overnight Center
\$55 member, \$65 nonmember
(each adult or child)

Nature Photography Workshop with Scott Avetta

This intermediate workshop includes: classroom time, critiques, field work, set-ups, subject selection, and visual presentation with before and after images. Accommodations are dormitory style. Meals included. Bring camera, camera bag with equipment you normally use, and tripod. Map and list of personal items to bring sent prior to overnight. Class size limited to 14 adults.

Saturday, June 6, 12:30 p.m.
to Sunday, June 7, 2 p.m.
Scott Avetta
Dana Brown Overnight Education Center
\$150 member, \$170 nonmember

My First Overnight

NEW!

Never been to an overnight at Shaw Nature Reserve? Now is your chance to come and join in the fun. We will check out the frogs at the wetland, look for signs of spring, and make some garden ornaments. Accommodations are dormitory style in historic log lodges. Breakfast included. **For ages 4-7.** Each child must be accompanied by one or more adults.

Friday, March 27, 7 p.m.
to Saturday, March 28, 11 a.m.
Karen Bryan
Dana Brown Overnight Center
\$55 member, \$63 nonmember
(each adult or child)



"Discover Nature-Women" offers the opportunity to participate in a variety of outdoor activities led by knowledgeable instructors. **Women age 14 and older (14 to 17 years must be accompanied by an adult)** can learn, improve, or practice their choice of three different outdoor skills. Approximately 15 different sessions will be offered from archery, canoeing, or fly fishing, to landscaping with native plants and nature crafts. The more science-minded might enjoy geology or wildflower identification and ecology. If you like to cook, how about dutch oven cooking? Optional evening activities might include a night hike, star gazing, nature scrapbooking, or sitting around the camp fire. Go to www.shawnature.org or call (636) 451-3512 for a complete list of activities and special registration form. Registration must be received by May 15. Confirmation letters and maps will be sent after the May 15 deadline. Accommodations are dormitory-style in historic log lodges. Five meals included. No partial day sign ups.

Friday, May 29, 6 p.m. (check in 4 to 6 p.m.) to Sunday, May 31, noon
Dana Brown Overnight Education Center
Overnight package: \$150 member, \$175 nonmember
Commuters: \$95 member, \$105 nonmember



at the Butterfly House

15193 Olive Blvd. • Chesterfield, MO 63017 • (636) 530-0076 • www.butterflyhouse.org

Bed Bugs

Bring the kids for a quiet evening stroll through the Tropical Conservatory, followed by a critter craft, snack, and bedtime story. For four to eight year olds with an adult. Reservations required, please call (636) 733-2339.

Fridays, April 3, 10, 17, and 24
6:30 to 7:30 p.m.

\$20 includes one child and one adult;
additional family members \$5 each

Butterfly Pinning

Do you love the artistry of butterflies? Learn to display them as a permanent reminder of the beauty. Learn how to mount butterflies for display. On June 10, you'll prepare a butterfly for mounting. On June 17, you'll mount the display. Pre-registration required.

Wednesdays: June 10 and 17
10 to 11 a.m.

\$12 members, \$15 nonmember

Creepy Crawlers

Inspect the wide world of insects. Most bugs are harmless and many have important jobs that benefit humans. But some insects can really BUG our beloved pets. Get up close and personal with these pesky, creepy crawlers. Join The Butterfly House and the Humane Society of Missouri for the crash course in entomology. Designed for ages 9 and up.

Thursday, July 16
10 am to noon
Donna Dupske, Chris Hartley,
and JoEllyn Klepacki
\$17 per person



The Butterfly House's BUZZ classes are springing up on Sundays again. Each class is approximately 90 minutes. Class size is limited to 20 participants.

BUZZ: Arthropod Warriors

How did the small insects become so successful? Find out the ferocious facts that let these tiny warriors rise to the top. Students learn adaptations and defenses of one invertebrate group and build their own model. At the end of class, they "battle" their models against dangers found in the wild. Pre-registration required. Fee includes one child and one adult.

Sundays, March 29, April 5, 19, 26
1 to 2:30 p.m.

Four class series:
\$43 member, \$55 nonmember
Individual classes:
\$12 member, \$15 nonmember

BUZZ: Lifestyles of the Six-Legged

What kind of animals can swim, jump, dig, and fly? That's right, it's the insects! Find out how they can be found in so many different habitats. Pre-registration required. Fee includes one child and one adult.

Sundays, June 28 and July 5, 12, 19, 26
1 to 2:30 p.m.

Five-class series:
\$65 member, \$70 nonmember
Individual classes:
\$12 member, \$15 nonmember



Nature's Recycled Alphabet

The Butterfly House's preschool program, Camp Bugaloo, designed for kids with a parent or guardian. Each ninety-minute, nature-themed program is packed with science, math, plants, insects, and other animals. Pre-registration required. Fee includes one child and one adult.

ages 4-5

Fridays, June 5 or 12
9:30 to 11 a.m.

Sundays, June 7 or 14
12:30 to 2 p.m.

ages 2-3

Fridays, August 21 or 28
9:30 to 11 a.m.

Sundays, August 23 or 30
12:30 to 2 p.m.

Donna Dupske

Two-class series:

\$19 member, \$25 nonmember
Individual classes:

\$12 member, \$15 nonmember

Xeriscaping **adult class**

Design your garden to withstand drought conditions. You can have a beautifully landscaped yard that requires very little or no water by implementing the techniques of xeriscaping.

Wednesday, July 24

10 a.m. to noon

Catherine Wittmer

\$12 member, \$15 nonmember


bh registration

Please use registration form on page 37.
For questions, call (636) 530-0076 ext. 13.



at the EarthWays Center

3617 Grandel Square • St. Louis, MO 63108 • (314) 577-0220 • www.earthwayscenter.org

Celebrate the sesquicentennial with EarthWays! In honor of the Missouri Botanical Garden's "Green for 150 Years" celebration, the EarthWays staff has planned new and expanded programs for one and all. Look for programs marked with a sunflower icon (noted with  designating them as a Sesquicentennial Celebration! program).

Tour the EarthWays Center

The easiest way to learn about low-cost, sustainable living options is to take a guided tour of the EarthWays Center—a Victorian home restored as a model of energy and resource efficiency. From repainting a room to rehabbing or building a new house—ideas abound! **EWC is open to the public on the 3rd Saturday and Sunday of every month.** No reservations needed for public tour weekends. Group tours for adults or youth require advance booking.

Tours run at 11 a.m., noon, 1, and 2 p.m. each tour day
FREE for members and children age 12 and under, \$3 nonmember

Greening Your Small Business

Discussion will help problem-solve sustainable practices for YOUR business. Topics include recycling, indoor air quality, purchasing policies, building energy efficiency, and generating a positive marketing message. Discover many ways that small business owners and employees can go green at work!

Thursday, February 5
6:30 to 8 p.m.
Jean Ponzi
\$12 member, \$15 nonmember

Cashing In on Home Comfort

Learn how to make your existing home energy efficient, healthy, and comfortable while saving money at the same time! We'll discuss simple things you can do as well as the benefits of a comprehensive whole-house energy assessment. The Greater St. Louis Home Performance with ENERGY STAR program will also be explained. Pizza and drinks provided. Program is offered five times, need only attend one.

Tuesday, February 17; Thursday, March 19;
Thursday, May 21; Tuesday, July 14 and
Thursday, August 20
6:30 to 8 p.m.
Korey Hart
\$12 member, \$15 nonmember

Planning Your New Green Home—No "Greenwashing" Allowed!

Ready to build your dream home? Maximize your investment by building green! You will leave this intensive workshop an informed consumer of nationally-established rating systems, able to apply eco-logic to your planning and construction processes, and avoid unsubstantiated green claims. Print resources cover many specific homebuilding elements. Pizza and beverages provided. Program is offered two times, need only attend one.

Thursday, March 26 or Thursday, May 14
5:30 to 9 p.m.
Jean Ponzi
\$16 member, \$20 nonmember
(includes pizza)

To learn more about greening the built environment, visit the U.S. Green Building Council-St. Louis Chapter's Web site <http://chapters.usgbc.org/stlouis/>. Congratulations to the chapter for winning a "Hero of the Planet" award this past fall!

What Makes a Home Green?

This overview of sustainable homebuilding and home improvement options will focus on integrating high performance building elements and balancing the "triple bottom line" of people-planet-profit—with a brief introduction to green home certification systems. A must for anyone considering a major home investment! Program is offered two times, need only attend one.

Thursday, April 9 or Thursday, June 18
6:30 to 8 p.m.
Jean Ponzi
\$12 member, \$15 nonmember

Small-Scale Renewable Energy for Homeowners

Want to power your home with sun, earth, or wind? Local experts will answer your questions about requirements and costs in addition to currently-available and newly-developing technologies to integrate renewable energy systems into your home.

Thursday, May 28
6:30 to 8 p.m.
Jean Ponzi and guest speakers
\$12 member, \$15 nonmember

Great Green Gizmos & Gadgets

Do you know what works better than a compact fluorescent light bulb? What gadget can help save up to \$0.12 per gallon of gasoline? Discover the newest and future gadgets designed to help you save energy and go green in and around your home. Each participant will receive a few samples to take home!

Tuesday, June 30
6:30 to 8 p.m.
Korey Hart and Kim Petzing
\$16 member, \$20 nonmember

adult classes

at the EarthWays Center

Cordwood Building Workshop

The Missouri Botanical Garden is proud to co-host Rob and Jaki Roy, renowned instructors and innovators in the field of cordwood construction, for a four-day intensive course. This particular type of construction encourages the creative process, community involvement, and innovative reuse of materials. According to Roy, “if properly built, a cordwood structure provides a natural, fire-retardant, mortgage-free shelter, is easy to build and will last at least a hundred years.”

In addition to the basic principles of this ancient building technique, participants will learn about the possible kinds of wood and mortar mixes, as well as the details of installing windows, doors, and masonry special effects. Half of the day will be spent on cordwood theory, slide presentations, and discussion of different styles, while the other half will be spent outside building a studio space 20 miles southwest of Fenton.

Please contact the EarthWays Center for more information about this unique opportunity. Lodging, scholarship, and extended learning opportunities may be available. Lunch, gloves, tools, and instructional materials will be provided.

Thursday, June 4 through Sunday, June 7
7:30 a.m. to 5:30 p.m.

Hands-on

Rob and Jaki Roy, Melanie Daniels, and Katy Mike Smaistrila
\$400 member, \$450 nonmember

green homes and gardens series

Find out how to go green both inside and outside your home.

Rain Water Harvesting

Capturing rain water for re-use is not only good for the environment, but will also save you money! Learn how simple tricks around the yard, such as rain barrels and rain gardens, will reduce your consumption of treated water (shrinking your water bills!), decrease flow into stormwater drains, and cut back on potential pollutants getting into the water table.

This class will take place at the Kemper Center at the Missouri Botanical Garden.

Monday, May 4
7 to 9 p.m.
Kim Petzing

\$12 member, \$15 nonmember

For more classes on this topic, see page 8.

Preserving the Harvest

Deliver the healthful wealth of your garden to your family's table all year long! Leasburg, Missouri Master Gardener, teacher, and veteran preserver Laura Friz will demonstrate basics and share expert tips covering canning, drying, and freezing all types of fresh produce—and she'll whip up a batch of microwave pickles!

This class will take place at the Kemper Center at the Missouri Botanical Garden.

Thursday, July 9 or August 6
7 to 9 p.m.

Jean Ponzi and Laura Friz
\$20 member, \$25 nonmember

Environmentally Ever After...

Bring the family for an eco-friendly cookout in the EarthWays Center backyard. Afterwards, we'll settle in for some environmentally-themed stories around the fire and cap off the evening with roasting marshmallows and making s'mores!

Friday, July 31
6 to 7:30 p.m.

Kim Petzing
\$12 member, \$15 nonmember
(each adult or child)

Green Kitchens

Your kitchen is often the hub of activity, but did you know it is also one of the most energy-intensive rooms? Participants will be treated to supper and some “kitchen talk” while we learn about energy-saving appliances, non-toxic cleaners, and suggestions for a variety of eco-friendly kitchenware. Each participant will make their own clean-air all-purpose cleaner to take home.

Tuesday, August 25
6:30 to 8 p.m.

Kim Petzing
\$20 member, \$25 nonmember

adult classes

at the EarthWays Center

reduce, reuse, recycle!

Composting Completely

If you've ever considered composting, but weren't sure where to start, this is the workshop! We'll begin with the very first step: picking a bin that works for you. Covering a complete assortment of bin types and structures, we'll discuss pros and cons as well as the basics. Each participant will leave with a simple outdoor bin and enough information to begin composting right away. Program is offered two times, need only attend one.

Saturday, March 28 or Saturday, April 11
1 to 3:30 p.m.

Katy Mike Smaistrila and
Hwei-Yiing Johnson

Lincoln University Cooperative Extension
\$24 member, \$30 nonmember

For more classes on this topic, see page 6.

Upcycling: Materials and Fabrication

Take "reuse" to another level and embark on "upcycling." Using art processes to give objects more value than their original meaning, we will construct something completely new out of trash and found items. Explore a variety of reused materials, such as "plarn," with a focus on fabrication and assembly techniques, including spinning, weaving, quilting, and felting. Materials will be provided, although participants are encouraged to bring their own supplies and ideas. Although each session will be similar in nature, participants are welcome to attend one or all.

Thursday, May 7; Wednesday, May 13;
or Wednesday, May 27
6 to 8 p.m.

Katy Mike Smaistrila and South City Open
Studio & Art Gallery instructors
\$16 member, \$20 nonmember

For more classes on this topic, see page 15.

eco-friendly field trips

Each trip will begin at the EarthWays Center, and participants will carpool to the field trip destination. Please arrive ready for your adventure, dressed for the weather, and closed-toed shoes!

Field Trip: Where Is "Away": Leaving For the Landfill

In this popular adult outing, we'll take a trip to see where it actually goes when you throw your trash "away." We'll tour a local landfill and see one of the biggest compost heaps in town. Morning munchies will be provided.

Saturday, March 28
8:30 to 11:30 a.m.

Katy Mike Smaistrila
\$12 member, \$15 nonmember

Field Trip: Small-Scale Renewable Energy Systems

See local installations of solar and wind power and talk with building owners about the capability and maintenance needs of their systems.

Saturday, April 4
9:30 a.m. to noon

Jean Ponzi
\$12 member, \$15 nonmember

Field Trip: MRF

Curious about where your recyclables actually go? If you've ever wondered if they really do get recycled, this is the tour for you! We'll tour a "MRF"—materials recovery facility—and see for ourselves how the recycling is sorted, stored, and then shipped off to be made in to useful items again. Morning munchies will be provided.

Friday, May 22
2 to 4 p.m.

Katy Mike Smaistrila
\$12 member, \$15 nonmember

Field Trip: Biomass Generation Plant

How can energy production co-exist within a residential area? It can if it's clean and green! We'll visit the Kirkwood Green Generation Facility to tour this self-contained energy generation facility fueled by biomass from local yard waste.

Saturday, June 13
9 to 11 a.m.

Kim Petzing
\$12 member, \$15 nonmember

Field Trip: Let's Go Out to Dinner and See a Farm

Urban farms are helping revitalize neighborhoods throughout the country. We will tour a local farm and learn more about community supported agriculture and local farmers markets. Following the tour, we'll eat dinner on the farm, featuring fresh, seasonal fare.

Monday, August 3
6 to 9 p.m.

Kim Petzing
\$40 member, \$45 nonmember

sustainability 101

How do we ensure that our actions and decisions have a simultaneous, positive impact on the environment and the people living in our communities, and make economic sense? Join this quarterly discussion forum focusing on various sustainability topics. Each session topic stands alone while also building on previous and future Sustainability 101 classes.

Water Conservation— Even with Spring Rains

Conservation and efficiency aren't associated only with energy—we need to conserve water, too. Even with spring rains! Considerable work goes into drinking water and systems to carry waste water away. Some areas struggle to have enough drinking/cooking water, much less water for lawns and pools. Let's talk water conservation!

Wednesday, February 11
6 to 8 p.m.
Glenda Abney and guest speaker
\$12 members, \$15 nonmember



Green Bins in St. Louis?

You've heard about blue bins, but what about green bins? "Green bin" programs provide residents with a way to compost without setting up a real bin—they simply put their food scraps out on the curb with their recyclables! Join local composting and recycling experts as we discuss what a program might look like and if such a thing is possible in St. Louis.

Wednesday, March 11
6 to 7:30 p.m.
Katy Mike Smaistrila and guest speakers
Free

Sustainability: Hot Topics and Trends

Participants in this quarterly class will discuss recent topics, trends, and updates on sustainability issues. We'll talk legislative updates; what's new in sustainable business; new benefits for homeowners and communities; national trends towards sustainability, and more. Come prepared to share—together we'll keep up-to-date on Sustainability 101!

Tuesday, April 7
6 to 8 p.m.
Glenda Abney
\$12 members, \$15 nonmembers

ewc registration

Please use registration form on page 37.
For questions, call (314) 577-0220

youth & family programs

at the Missouri Botanical Garden

Youth and Family Programs Spring 2009. Join us with your child or grandchild to learn about plants and the Garden. Each session includes indoor, hands-on activities, songs, stories, snacks, and a walk in the Garden. Children must be accompanied by an adult. Registered participants only, please. Registration and payment must be done prior to day of the class. Please call (314) 577-9506 with questions.



Spring

As flowers begin to brighten the Garden, we will learn about the parts of plants each week. Participants will learn about a new type of flower and a specific plant part (like seeds, flowers, leaves, or roots) during each class.

Seven week series starting Monday, April 6, Tuesday, April 7, or Wednesday, April 8 10 to 11:30 a.m.

Jessica Kester
\$112 member, \$126 nonmember

Summer

We will explore a new Garden habitat each week. Children will learn about what plants and animals make native forests, ponds, and prairies so special.

Four week series starting Wednesday, June 3 or Thursday, June 4 10 to 11:30 a.m.

Jessica Kester
\$64 members, \$72 nonmembers



Discover the amazing world of plants with your preschooler in Garden Buds. We'll taste, touch, smell, listen, and look as we learn about botanical wonders indoors and out.

Participants can enroll for the series or individual classes.

Thursday classes: 10 to 11:30 a.m.

Sunday classes: 1:30 to 3 p.m.

Jessica Kester

Individual classes:

\$16 members, \$18 nonmembers

7-class series:

\$112 members, \$126 nonmembers

Climbers and Creepers

Do plants move? They have roots, but they grow up, down and all around to find the sunlight they need. Take home a creepy, crawly, climbing planter of your own!

Sunday, March 8 or Thursday, March 12

Cherry Blossom Time

When the brave cherry blossom blooms, spring has surely sprung! Celebrate in Japanese style by making a sakura (cherry blossom) picture. We'll also stop to feed the koi (fish)!

Sunday, March 22 or Thursday, March 26

Budding Buddies

A bud is a blanket around a baby flower or leaf. Let's find these fuzzy friends on our way to the Chinese Garden. We'll look for other signs of spring and you'll get a flower bud to brighten your room!

Sunday, April 5 and Thursday, April 9

Bloomin' Bulbs

Tulips, daffodils, crocus, and hyacinths! Join us as we learn the names of these spring treasures and how they grow. You'll take home a bloomin' bulb of your own.

Sunday, April 19 or Thursday, April 23

The Rainbow Garden

There are so many colors to discover in the Garden. We'll count how many colors we can find on our walk to the iris garden, which will be bursting with color! You'll even take home a colorful plant!

Sunday, May 3 or Thursday, May 7

Swinging through the Rainforest

Who might be hanging from a banana plant? Discover which animals and plants live in the layers in the rainforest. Take home a rainforest plant to start your own jungle.

Sunday, May 17 or Thursday, May 21

WOW, That Smells Good!

The Garden fills with sweet smells as flowers and spring plants pop up. We'll visit the best smelling places in the Garden and you'll take home an herb garden.

Sunday, May 31 or Thursday, May 28



Workout at the Garden with trained fitness instructors! Strollerobics is a fun workout for all fitness levels. This eight-week course is for parents and their children in strollers. Participants push strollers along the Garden's mostly flat paths, stopping to do cardio and toning exercises. Participants need to bring a towel or thin mat for ground exercises and an exercise tube to enhance the workout. Your children will enjoy the sights and sounds of the Garden, while you get a great workout!

Classes begin the week of March 16 and are offered Monday through Friday from 9:30 to 10:30 a.m. and Tuesday evenings from 6 to 7 p.m.

*Eight class session:
\$56 member/\$64 nonmember*

Class size is limited to 12 adult participants, so register today!

youth & family programs

at the Missouri Botanical Garden



at the Garden | grades 4-6

(In collaboration with COCA)

During the spring, the Garden is bursting with color. Now, your youngsters in grades 4-6 can creatively capture those colors on canvas! While visiting various locations in the Garden, students will use traditional and non-traditional water-based media techniques. At the end of the session, student's artwork will be displayed at the COCA Student Gallery. No experience necessary. Class takes place at the Missouri Botanical Garden.

Sundays March, 8, 15, 22, 29, and April 5 and 19

1:30 to 3 p.m.

COCA Instructor

Six-class series:

\$96 MBG or COCA member

\$108 nonmember, plus \$15 supply fee

To register, please call COCA at (314) 725-6555

or visit their website: www.cocastl.org



ages 6-12

The Oaks and Acorns Program is especially for seniors and their favorite young person. Participants will learn about a plant, its history, and uses. They will also complete a take-home project together.

10 to 11:30 a.m.

Jessica Kester and Kelly Wehrheim

\$16 members, \$18 nonmembers

Flowers Forever

Save this year's blooms with your own flower press. You will make a flower press with recycled materials and complete a fun project using pressed flowers.

Saturday, March 7

mbg registration

Please use registration form on page 37. For questions, call (314) 577-9506

I Love Trees

Learn to identify some of the Garden's magnificent trees. We'll also create a feeder and house for the winged residents of your backyard.

Saturday, April 4

Fresh from the Garden!

Plant a Pizza Garden after visiting the herb and vegetable gardens. You'll also take home a recipe box (made with recycled materials) to save the secrets to your favorite treats.

Saturday, May 2



Calling all teens!

Do you love plants and nature? Do you need to complete service hours or gain positive experiences to put on your college application? Then check out the Garden's SAGE Service Program! www.mobot.org/education/sageservice

Children's garden

Come grow with us!



a missouri adventure
the doris i. schuck children's garden
MISSOURI BOTANICAL GARDEN

Hey Kids! The Children's Garden reopens for the season April 1st. We have planned a variety of fun and exciting activities that are waiting just for you. Bring your family and explore just how much we've grown.

Great Green Adventures -- All new in 2009!

Explore a special part of the Garden with us each month. Learn about plants, nature, and sustainability through hands-on activities, journaling, stories, and games. Meet Education staff at the Children's Garden Ticket Fort for a special hour-long adventure on the Garden grounds.

Recommended for 6-12 years old, with an adult
Free members, \$3 non-members (per child under 12)
Third Saturday of each month
10:30 a.m. or 1:30 p.m.
Meet and pay at the Children's Garden Ticket Fort,
Pre-registration not required.

March 21 - Signs of Spring
April 18 - Blooming Bulbs
May 16 - Ponds Come to Life
June 20 - Getting to Know Trees
July 18 - Discovering Missouri Natives
August 15 - Exploring the Chinese Garden

Germination Stations

Come explore the power of plants with staff in the Children's Garden.

Learn about some of the plants you eat.

Discover how pioneers grew and prepared their food.

Explore what's so neat about trees.

Uncover what's been living inside our cave.

Pretend to be a steamboat captain on a journey down the mighty Mississippi.

Search the swamp for wetland wildlife.

Observe pollinators and find out why they are important.

Visit www.mobot.org/finn for hours, admission rates, and more information about activities and events happening through October 31, 2009!

registration information

Shaw Nature Reserve, EarthWays Center, Butterfly House, Garden Early Childhood

Spring 2009

Registration

Please use the mail-in form on page 37 to register for programs at SNR, EWC, BH, and Garden Youth & Family Programs.

For more detailed information on classes or to check on availability, please call the specific sites.

- Shaw Nature Reserve classes, call (636) 451-3512 ext. 0 (toll free from St. Louis).
- EarthWays Center classes, call (314) 577-0220.
- Butterfly House classes, call (636) 530-0076 ext. 13.
- Garden Youth & Family Programs, call (314) 577-9506.

Class Fees and Payment

Advance reservation is required. Most classes have limited registration. Walk-in students will not be accepted. Payment is due prior to class, unless otherwise noted.

Confirmation

A registration confirmation with program details will be sent to you by mail or e-mail.

Cancellations and Refunds

If after you've registered you need to cancel, please notify the contact on your registration confirmation as soon as possible.

For cancellations 5 or more business days prior to the class, a full refund (minus a \$5 processing fee) will be issued.

Refunds cannot be issued for cancellations less than 5 business days or missed classes.

Many programs will allow you to send an alternate participant if you are unable to attend. Please check with the contact on your registration confirmation.

For SNR overnight program refunds, cancellations must be made at least 2 weeks prior to the program.

In the event that the SNR, EWC, BH, and Garden must cancel a class, you will be notified and receive a full refund.

Location

- Shaw Nature Reserve is located in Gray Summit, Missouri in eastern Franklin County.
- EarthWays Center is located at 3617 Grandel Square in St. Louis, just North of the Fox Theatre.
- Butterfly House is located in Chesterfield, Missouri within Faust Park.
- Missouri Botanical Garden is located off I-44 and is easily accessible from the major highways in the area, even during the scheduled construction on I-64/40 in 2009. See page 20 for more information or visit: www.thenewi64.org for up-to-date construction details.

Inclement Weather

Participants should come dressed for the weather as programs are usually held rain or shine. If in doubt, please refer to your registration confirmation for contact information.

Missouri Botanical Garden is an Equal Opportunity/Affirmative Action Employer.

© 2009 Missouri Botanical Garden

Photos by: Lisa Francis, Jack Jennings, Lauren Kirkwood, Glenn Kopp, Cindy Lancaster, Heather Marie Osborn, Tammy Palmier, Karen Strobach, Laila Wessel, Kevin Wolf

Floral clock illustration by: Dave Buck



sustainability

The Missouri Botanical Garden strives to make the most sustainable choices for the future of people, plants, and the planet. This publication is printed on paper containing 100% post-consumer recycled content. We hope that you will recycle it when finished or pass it along to a friend.



registration form

Spring 2009

Shaw Nature Reserve, EarthWays Center, Butterfly House, Garden Early Childhood

Name: _____

Child's Name and Birth Date: _____
(if applicable)

Address: _____ City: _____ State: _____ Zip: _____

Home Phone: _____ Work Phone: _____ E-mail: _____

Payment options

Please check one: Member Nonmember Staff Volunteer

Remittance: Check Visa MasterCard Discover

Card number: _____ Exp.: _____ Signature: _____

3-digit verification code: _____

Courses

Course name	Location	Date	Fee

Total

Mail to:

Missouri Botanical Garden
Education Division
P.O. Box 299
Saint Louis, MO 63166

Notice: classes may be photographed and/or recorded for use by the Garden in its communications efforts. Students wishing not to be photographed or recorded should inform the photographer.

calendar

february

s	m	t	w	t	f	s
1	2	3	4	5	6	7
8	9	10	11	12	13	14
15	16	17	18	19	20	21
22	23	24	25	26	27	28

march

s	m	t	w	t	f	s
1	2	3	4	5	6	7
8	9	10	11	12	13	14
15	16	17	18	19	20	21
22	23	24	25	26	27	28
29	30	31				

april

s	m	t	w	t	f	s
			1	2	3	4
5	6	7	8	9	10	11
12	13	14	15	16	17	18
19	20	21	22	23	24	25
26	27	28	29	30		

get
growing!

spring-summer | 09

For more information, to look at classes, or to print your own copy of the calendar, visit our website at www.gardeninghelp.org and click on "classes."

MBG = Missouri Botanical Garden

SNR = Shaw Nature Reserve

EWC = EarthWays Center

BH = Butterfly House

DBL = Daniel Boone Library

WW = Wildwood Campus

MC = Monsanto Center
(Corner of Vandeventer and Shaw Blvd.)

CBEC = Commerce Bank
Education Center
(Corner of Kingshighway and Shaw Blvd.)

OFF = Offsite

DAY DATE CLASS LOCATION PAGE

February

Thurs	5	Greening Your Small Business	EWC	30
Thurs	12	Native Landscaping: Part 1	SNR	24
Tues	17	Cashing In on Home Comfort	EWC	30
Sat	21	A Taste of Watercolor AR23A	MBG	13
Sat	21	Cake Decorating for Beginners CK42A	MBG	18
Sat	21	A Spring Floral Arrangement FD29A	MBG	14
Sat	21	Divide and Multiply Your Perennials GP21A	MBG	5
Sat	21	Pruning and Timing GP43A	MBG	5
Sat	21	Organic Lawn Care GP46A	MBG	5
Sat	21	Adding Color to Your Garden GP62A	MBG	5
Sat	21	Climatron and Temperate House Tour GT57A	MBG	11
Sat	21	Planting for Screening and Privacy LA31A	MBG	7
Sat	21	Birds and Birding in St. Louis NS14A	MBG	12
Sat	21	Perennials for Saturday Gardeners PC53A	MBG	8
Sat	21	Garden Photography Workshop PH21A	MBG	16
Sun	22	Selecting, Planting and Pruning Roses GP36A	MBG	5
Sun	22	Organic Gardening Basics GP51A	MBG	6
Sun	22	A Gardener's First Steps GP63A	MBG	5
Sun	22	Spring Lawn Care GP64A	MBG	5
Sun	22	Shady Characters HD59A	MBG	4
Sun	22	Growing Orchids IP16A	MBG	9
Sun	22	Behind the Scenes- The Research Greenhouse IP35A	MBG	9
Sun	22	Container Gardening SG14A	MBG	7
Tue	24	Gardening for Spanish Speakers GP65A	MBG	6
Wed	25	New Thoughts and Practices for Planting Trees and Shrubs HD72A	MBG	4

March

Tues	3	Garden Buds: It Looks Like Spilled Milk	SNR	27
Wed	4	Basic Yoga (6 sessions)	SNR	22
Wed	4	Behind the Scenes: Orchid Show GT56A	MBG	10
Fri	6	Watercolor In Bloom AR20A	MBG	13
Fri	6	Photography Workshop with Visiting Artist Linda Rutenberg PH31A	MBG	17
Sat	7	Oaks and Acorns: Flowers Forever	MBG	35
Sat	7	Gourd Birdhouse CR68A	MBG	14
Sat	7	Redo Design LA46A	WW	7
Sun	8	Garden Buds: Climbers and Creepers	MBG	34
Sun	8	Youth Watercolor (Six class series)	MBG	35
Tue	10	Pruning Basics GP31A	MBG	6
Wed	11	Made for the Shade HD38A	MBG	4
Wed	11	Home Landscape Design LA10A	MBG	7
Thurs	12	Garden Buds: Climbers and Creepers	MBG	34
Thurs	12	Native Plant Propagation from Seed	SNR	24
Sat	14	Botanical Illustration AR12A	MC	13
Sat	14	Chinese Brush Painting Workshop AR28A	MBG	13
Sat	14	Behind the Scenes: Sugar Creek Gardens GF30A	OFF	10
Sat	14	Indoor Bonsai IP19A	MBG	9
Mon	16	Strollerobics (Monday Series)	MBG	34
Mon	16	Knife Skills CK19A	MBG	18
Tues	17	Strollerobics (Tuesday Day & Evening Series)	MBG	34
Wed	18	Strollerobics (Wednesday Series)	MBG	34

DAY DATE CLASS LOCATION PAGE

Wed	18	Gardening 101 Seminar GP10A	MBG	3
Thurs	19	Strollerobics (Thursday Series)	MBG	34
Thurs	19	Cashing In on Home Comfort	EWC	30
Thurs	19	A Spring Wreath Techniques Class CR45A	MBG	14
Fri	20	Strollerobics (Friday Series)	MBG	34
Sat	21	Backyard Wildlife Habitat Building Project	SNR	25
Sat	21	Looking for Spring in the Witmire Wildflower Garden	SNR	27
Sat	21	Handmade Papermaking CR25A	MBG	15
Sun	22	Garden Buds: Cherry Blossom Time	MBG	34
Tue	24	The Diabetic Gourmet CK95A	MBG	19
Tue	24	Spring Chipcarving Basics CR53A	MBG	15
Thurs	26	Garden Buds: Cherry Blossom Time	MBG	34
Thurs	26	Planning Your New Green Home: No "Greenwashing" Allowed!	EWC	30
Fri	27	GPS Your Way through Shaw Nature Reserve History	SNR	28
Fri	27	My First Overnight	SNR	28
Sat	28	Tea and Daffodils	SNR	22
Sat	28	Reduce, Reuse, Recycle: Composting Completely	EWC	32
Sat	28	Field Trip: Where Is "Away" Leaving For the Landfill	EWC	32
Sat	28	Best of Punjabi Home Cooking V EC33A	MBG	19
Sat	28	Behind the Scenes: Fahr Greenhouse GF33A	OFF	10
Sat	28	Rain Gardens Demystified PC63A	WW	8
Sun	29	BUZZ: Arthropod Warriors	BH	29
Mon	30	Scents of Spring CK34A	MBG	18
Mon	30	Natural History of Chocolate CK90A	MBG	18
Mon	30	Stopping the Global Invasion Starts in your Backyard!! HD31A	MBG	4
Tue	31	The Garden in Watercolor AR10A	MBG	13
Tue	31	Heirloom Vegetables GP57A	MBG	6

April

Wed	1	Sketching the Garden AR74A	MBG	13
Wed	1	Basic Photography PH10A	MBG	16
Wed	1	What is that Particular Flavor? WB25A	MBG	17
Thurs	2	Digital Photography: Beginner's Next Step PH25A	MBG	16
Fri	3	Arbor Day Tree Walk	SNR	22
Fri	3	Bed Bugs	BH	29
Sat	4	Field Trip: Small-Scale Renewable Energy Systems	EWC	32
Sat	4	Oaks and Acorns: I Love Trees	MBG	35
Sat	4	Silver Leaf Pendant CR49A	MBG	15
Sat	4	Organic Lawn Care GP46B	WW	5
Sun	5	BUZZ: Arthropod Warriors	BH	29
Sun	5	Garden Buds: Budding Buddies	MBG	34
Mon	6	Little Sprouts: Spring Monday Series	MBG	34
Mon	6	Basics of Birding NS10A	MBG	12
Tues	7	Little Sprouts: Spring Tuesday Series	MBG	34
Tues	7	Spring Wildflower Walks	SNR	22
Tues	7	Garden Buds: Tree Hokey-Pokey	SNR	27
Tue	7	Evening Stroll through Woodland Garden GW17A	MBG	11
Tue	7	Fine Wines for \$10 or less WB90A	MBG	17
Wed	8	Little Sprouts: Spring Wednesday Series	MBG	34
Thurs	9	Garden Buds: Budding Buddies	MBG	34
Thurs	9	What Makes a Home Green?	EWC	30
Thurs	9	Native Landscaping: Part 2	SNR	24
Fri	10	Bed Bugs	BH	29
Sat	11	Reduce, Reuse, Recycle: Composting Completely	EWC	32
Tues	14	Spring Wildflower Walks	SNR	22
Tue	14	Home Landscape Design LA10B	MBG	7
Tue	14	Four Seasons of Color with Shade Natives PC65A	MBG	8
Wed	15	Making Sushi EC11A	MBG	19
Thurs	16	Morning Bird Walks	SNR	22
Thurs	16	Native Perennials and Grasses for Landscaping: Part 1	SNR	24
Fri	17	Bountiful Bluebells	SNR	23
Fri	17	Bed Bugs	BH	29
Sat	18	Tale Travelers	SNR	25
Sat	18	Zoysia Lawn Care GP42A	CBEC	6
Sat	18	A Day of Chinese Culture MI00	OFF	20
Sat	18	An Introduction to the History of Printing and Books MI43A	MC	20
Sun	19	Fly Fishing for Beginners	SNR	23

may

s	m	t	w	t	f	s
					1	2
3	4	5	6	7	8	9
10	11	12	13	14	15	16
17	18	19	20	21	22	23
24	25	26	27	28	29	30

june

s	m	t	w	t	f	s
	1	2	3	4	5	6
7	8	9	10	11	12	13
14	15	16	17	18	19	20
21	22	23	24	25	26	27
28	29	30				

july

s	m	t	w	t	f	s
			1	2	3	4
5	6	7	8	9	10	11
12	13	14	15	16	17	18
19	20	21	22	23	24	25
26	27	28	29	30	31	

calendar

DAY	DATE	CLASS	LOCATION	PAGE
Sun	19	BUZZ: Arthropod Warriors	BH	29
Sun	19	Garden Buds: Bloomin' Bulbs	MBG	34
Sun	19	Dim Sum EC29A	MBG	19
Mon	20	Spring Farmers' Market CK65A	MBG	18
Mon	20	Forest Park, from Park Creation to Now MI36A	MBG	20
Tues	21	Spring Wildflower Walks	SNR	22
Tue	21	Birding by Ear NS32A	MBG	12
Tue	21	Tour of American Wines WB30A	MBG	17
Wed	22	Basic Yoga (6 sessions)	SNR	22
Wed	22	Gardening 101 Seminar GP10B	MBG	3
Wed	22	The Basics of Fair Trade with Tastings MI81A	MBG	11
Wed	22	Container Gardening SG14B	MBG	7
Thurs	23	Morning Bird Walks	SNR	22
Thurs	23	Garden Buds: Bloomin' Bulbs	MBG	34
Thur	23	Colorize your Garden to Go HD12A	MBG	4
Fri	24	Arbor Day Tree Walk	SNR	22
Fri	24	Bed Bugs	BH	29
Sat	25	Basket Making	SNR	23
Sat	25	Wildflower Identification and Ecology	SNR	23
Sat	25	Composting GP14A	DBL	6
Sat	25	Organic Gardening Basics GP51B	WWV	6
Sun	26	BUZZ: Arthropod Warriors	BH	29
Mon	27	Close up Photography PH20A	MBG	16
Tues	28	Spring Wildflower Walks	SNR	22
Tue	28	Rub, Rub, Yum! Grilling Secrets CK56A	MBG	18
Tue	28	Heirloom Roses: Old Garden Roses GP40A	MBG	6
Wed	29	Redo Design LA46B	MBG	7
Thurs	30	Morning Bird Walks	SNR	22

May

Sat	2	Tea on the Terrace	SNR	23
Sat	2	Oaks and Acorns: Fresh from the Garden!	MBG	35
Sat	2	Carving Shells and Scrolls CR77A	MBG	15
Sun	3	Mushrooms: From Backyard to Table	SNR	23
Sun	3	Garden Buds: The Rainbow Garden	MBG	34
Sun	3	Tai Chi/ Chi Gong MI61A	MBG	16
Mon	4	Green Homes and Gardens: Rain Water Harvesting	EWC	31
Mon	4	DIY: Knitted Market Bag CR62A	MBG	15
Mon	4	Terra-cotta Wind Chimes CR51A	MBG	9
Tues	5	Spring Wildflower Walks	SNR	22
Tues	5	Garden Buds: Blooming Fun!	SNR	27
Tue	5	Behind the Scenes: Floral Clock GT41A	MBG	10
Thurs	7	Reduce, Reuse, Recycle: Upcycling - Materials & Fabrication	EWC	32
Thurs	7	Garden Buds: The Rainbow Garden	MBG	34
Fri	8	Fruits, Flowers and Insects AR25	MBG	14
Sat	9	Rustic Garden Bench Workshop	SNR	25
Mon	11	Exploring Nature in the Garden and Forest Park NS30A	MBG	12
Mon	11	Don't Kill your Perennials PC64A	MBG	8
Tues	12	Spring Wildflower Walks	SNR	22
Wed	13	Reduce, Reuse, Recycle: Upcycling - Materials & Fabrication	EWC	32
Wed	13	Sharing Dinner with Mom CK41A	MBG	18
Wed	13	Behind the Scenes: the Orchid Range IP22A	MBG	9
Wed	13	Intermediate Photography III PH13A	MBG	16
Thurs	14	Common Garden Weeds: Control and ID	SNR	24
Thurs	14	Planning Your New Green Home: No "Greenwashing" Allowed!	EWC	30
Thur	14	Four Seasons of Color with Sun Natives PC66A	MBG	8
Sat	16	Plein Air Landscape Painting	SNR	24
Sat	16	Wetlands are Wonderful	SNR	27
Sat	16	Father and Son Fish 'n' Float	SNR	28
Sat	16	Photography Workshop with Visiting Artist Stewart Halperin PH32A	MBG	17
Sun	17	Garden Buds: Swinging through the Rainforest	MBG	34
Mon	18	Growing and Using Herbs PC12A	MBG	8
Tues	19	On the Wagon	SNR	25
Tue	19	Summer Grilling Sampler CK82A	MBG	18
Tue	19	Water Gardening SG10A	MBG	7
Wed	20	Drought-tolerant Shrubs and Perennials GT14A	MBG	11
Wed	20	Orchid Repotting Workshop IP23A	MBG	9

DAY	DATE	CLASS	LOCATION	PAGE
Thurs	21	Cashing In on Home Comfort	EWC	30
Thurs	21	Garden Buds: Swinging through the Rainforest	MBG	34
Fri	22	Managing your Land for Quail and other grassland birds	SNR	24
Sat	23	Wildflower Identification and Ecology	SNR	23
Sat	23	Field Trip: MRF	EWC	32
Tues	26	On the Wagon	SNR	25
Wed	27	Reduce, Reuse, Recycle: Upcycling - Materials & Fabrication	EWC	32
Thurs	28	Ants: "Bugs" with Family Values	SNR	26
Thurs	28	Small-Scale Renewable Energy for Homeowners	EWC	30
Thurs	28	Garden Buds: WOW, That Smells Good!	MBG	34
Sat	29	Discover Nature-Women	SNR	28
Sat	30	Exploring Watercolor AR73A	MBG	14
Sun	31	Garden Buds: WOW, That Smells Good!	MBG	34

June

Wed	3	Little Sprouts: Summer Wednesday Series	MBG	34
Thurs	4	Little Sprouts: Summer Thursday Series	MBG	34
Thurs	4	Cordwood Building Workshop	EWC	31
Fri	5	Camp Bugaloo: Nature's Recycled Alphabet	BH	29
Sat	6	Trees of Missouri	SNR	24
Sat	6	First Time Fishing for Kids	SNR	26
Sat	6	Tom Sawyer Adventure Hike	SNR	26
Sat	6	Nature Photography Workshop with Scott Avetta	SNR	28
Sat	6	DIY: Crocheted Market Bag CR63A	MBG	15
Sun	7	Camp Bugaloo: Nature's Recycled Alphabet	BH	29
Mon	8	Tough Plants for Clay Soils HD13A	MBG	4
Tue	9	Recognizing the Songs of Insects NS31A	MBG	12
Wed	10	Butterfly Pinning (2 class series)	BH	29
Thurs	11	Rain Gardening and Storm Water Runoff	SNR	24
Fri	12	Camp Bugaloo: Nature's Recycled Alphabet	BH	29
Sat	13	Nighttime Insect Safari	SNR	26
Sat	13	Behind the Scenes: Bowood Farms GF32A	OFF	10
Sun	14	Camp Bugaloo: Nature's Recycled Alphabet	BH	29
Sat	14	Field Trip: Biomass Generation Plant	EWC	32
Mon	15	Historic and Important Trees of the Garden GW38A	MBG	11
Thurs	18	What Makes a Home Green?	EWC	30
Fri	19	Complete Container Gardening HD32A	MBG	3
Sat	20	Wildflower Identification and Ecology	SNR	23
Sun	28	BUZZ: Lifestyles of the Six-Legged	BH	29
Mon	29	Make Your Own Herbal Infusion CK89A	MBG	19
Tues	30	Great Green Gizmos and Gadgets	EWC	30
Tue	30	Country Flower Arranging FD31A	MBG	14
Tue	30	Don't Kill your Perennials PC64B	MBG	8

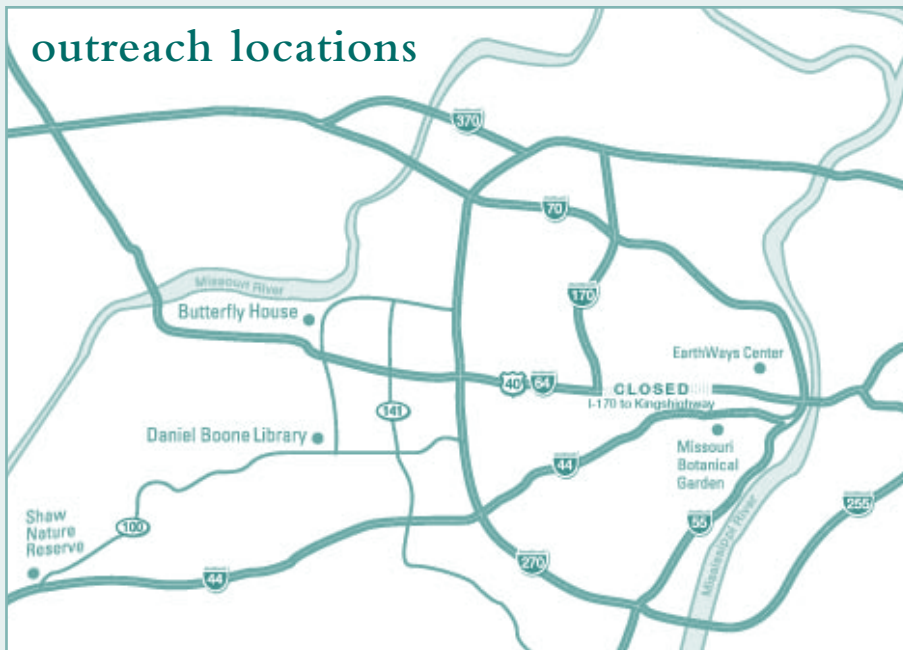
July

Sun	5	BUZZ: Lifestyles of the Six-Legged	BH	29
Thurs	9	Native Perennials and Grasses for Landscaping: Part 2	SNR	24
Thurs	9	Home Plate: Preserving the Harvest	EWC	31
Sun	12	BUZZ: Lifestyles of the Six-Legged	BH	29
Tues	14	Cashing In on Home Comfort	EWC	30
Sun	19	BUZZ: Lifestyles of the Six-Legged	BH	29
Sat	25	Wildflower Identification and Ecology	SNR	23
Sat	25	Dog-Days Butterfly Ramble	SNR	26
Sun	26	BUZZ: Lifestyles of the Six-Legged	BH	29
Wed	24	Xeriscaping	BH	29
Fri	31	Reduce, Reuse, Recycle: Environmentally Every After	EWC	32

August

Thurs	6	Home Plate: Preserving the Harvest	EWC	31
Thurs	13	Prairie & Savanna Reconstruction: Part 1	SNR	24
Tues	20	Cashing In on Home Comfort	EWC	30
Fri	21	Camp Bugaloo: Nature's Recycled Alphabet	BH	29
Sat	22	Wildflower Identification and Ecology	SNR	23
Sun	23	Camp Bugaloo: Nature's Recycled Alphabet	BH	29
Tues	25	Green Homes and Gardens: Green Kitchens	EWC	31
Fri	28	Camp Bugaloo: Nature's Recycled Alphabet	BH	29
Sun	30	Camp Bugaloo: Nature's Recycled Alphabet	BH	29

outreach locations



In addition to the Garden, you can attend classes at these outreach locations:

Shaw Nature Reserve

Hwy 100 at I-44 (exit 253)
P.O. Box 38
Gray Summit, MO 63039
(636) 451-3512

Sophia M. Sachs Butterfly House

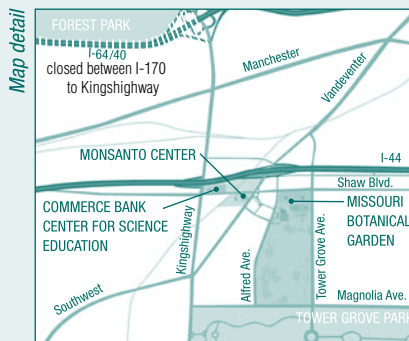
15193 Olive Blvd., Faust Park
Chesterfield, MO 63017
(636) 530-0076

EarthWays Center

3617 Grandel Square
St. Louis, MO 63108
(314) 577-0220

St. Louis County Library, Daniel Boone Branch

300 Clarkson Rd., Ellisville, MO 63011
(636) 227-9630



For up-to-date construction information during the I-64/Hwy 40 reconstruction, visit www.thenewi64.org.

Worried about highway construction?
The Garden is...



For latest directions, visit www.mobot.org.

horticultural training program at st. louis community college

Kemper Center for Home Gardening of Missouri Botanical Garden with St. Louis Community College at Meramec

Certificate of Specialization in Landscapes and Gardening

The Horticulture Department at St. Louis Community College – Meramec has modified its popular Gardener Training certificate and is now titled Landscapes and Gardening. To earn your certificate you must complete 9 credit hours of instruction. Each course is 1 credit hour. After taking the basic pre-requisite, Fundamentals of Horticulture, students may then sign up for the remaining 8 courses. Classes will meet for 2 hours per week for 8 weeks and will meet on the Meramec campus or at the Garden in the evening. One of our new classes, Selected Topics in Gardening, is a course that will enable students to take classes offered by the Garden and receive credit in the certificate program. This greatly increases course/topic choices for students.

If you have been enrolled in the Gardener Training Program, your credits will be transferred into the Landscapes and Gardening Program. Whether you are a new student or have taken classes in the past, call Paul Roberts at (314) 984-7714 for a complete brochure on the new program.

 MISSOURI BOTANICAL GARDEN
4344 Shaw Boulevard • Saint Louis, Missouri 63110

NON-PROFIT ORG.
U.S. POSTAGE PAID
ST. LOUIS, MO
PERMIT NO. 1325