

# New Mexico, 2005

## Primary and secondary syphilis

- **CASES:** New Mexico reported 56 cases in 2005.
- **RATES:** New Mexico ranked 16 among 50 states + DC + 3 territories: 2.9 cases per 100,000 population compared to the U.S. rate of 3.0 cases per 100,000 population.

## Male-female rates of primary and secondary syphilis

- In New Mexico, the rate among males was 4.3 per 100,000 population compared to the U.S. male rate of 5.1 per 100,000.
- The rate among females was 1.7 per 100,000 compared to the U.S. female rate of 0.9 per 100,000.

## Racial disparities of primary and secondary syphilis

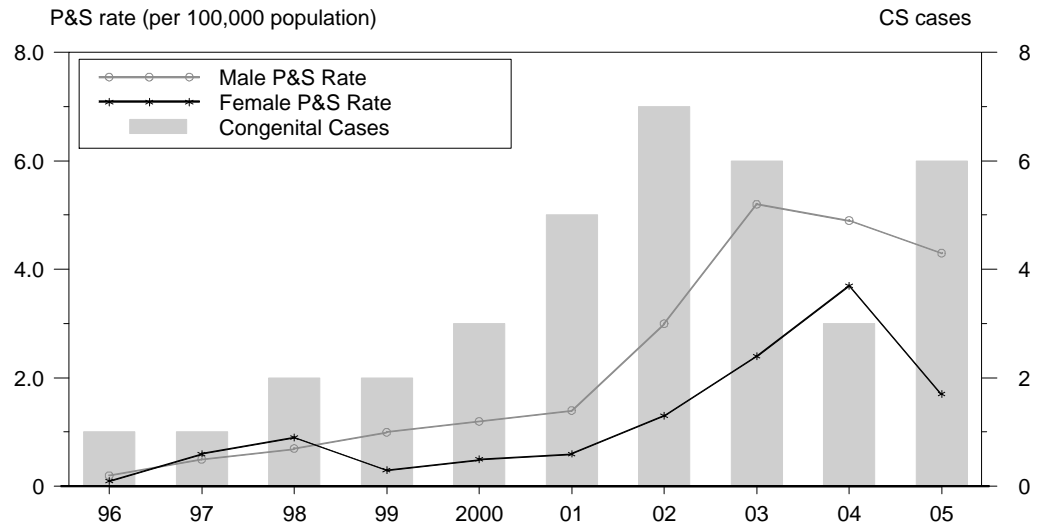
In New Mexico, the race/ethnicity adjusted rates per 100,000 population were 1.2 among whites, 5.2 among blacks, 2.3 among Hispanics, 0.0 among Asian/Pacific Islanders, and 13.3 among American Indians/Alaska Natives.

- The rate among blacks was 4.3 times that of whites.
- The rate among Hispanics was 1.9 times that of whites.
- The rate among American Indians/Alaska Natives was 11.1 times that of whites.

## Congenital syphilis

- **CASES:** New Mexico reported 6 cases in 2005.
- **RATES:** New Mexico ranked 4 among 28 states + 2 territories reporting at least one congenital syphilis case: 21.6 cases per 100,000 live births compared to the U.S. rate of 8.0 cases per 100,000.

## Syphilis: P&S Rates and Congenital Cases, New Mexico, 1996-2005



## Total P&S Syphilis Rates by County, New Mexico, 2005

