

# INTEGRATED SAFETY MANAGEMENT (ISM) & JOB HAZARDS ANALYSIS (JHA)



Environmental Energy  
Technologies Division



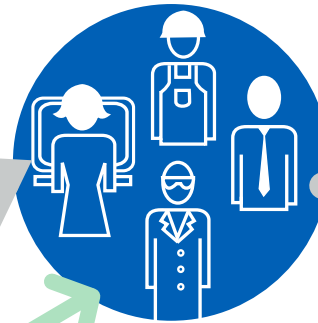
## 1. DEFINE WORK

Examples:

Office: *I work on a PC several hours a day*

Lab: *I do organic chemistry synthesis*

Complete your Job Hazards Analysis (JHA)



## 2. ANALYZE HAZARDS

Ergonomic Injuries

*Handling toxic, flammable  
chemicals*



## 3. DEVELOP CONTROLS

Do an ergonomic  
self-assessment

*Fume hood, safety glasses,  
gloves, lab coat*

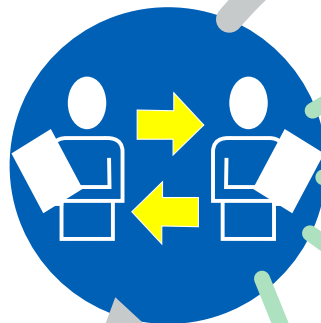


## 4. PERFORM WORK

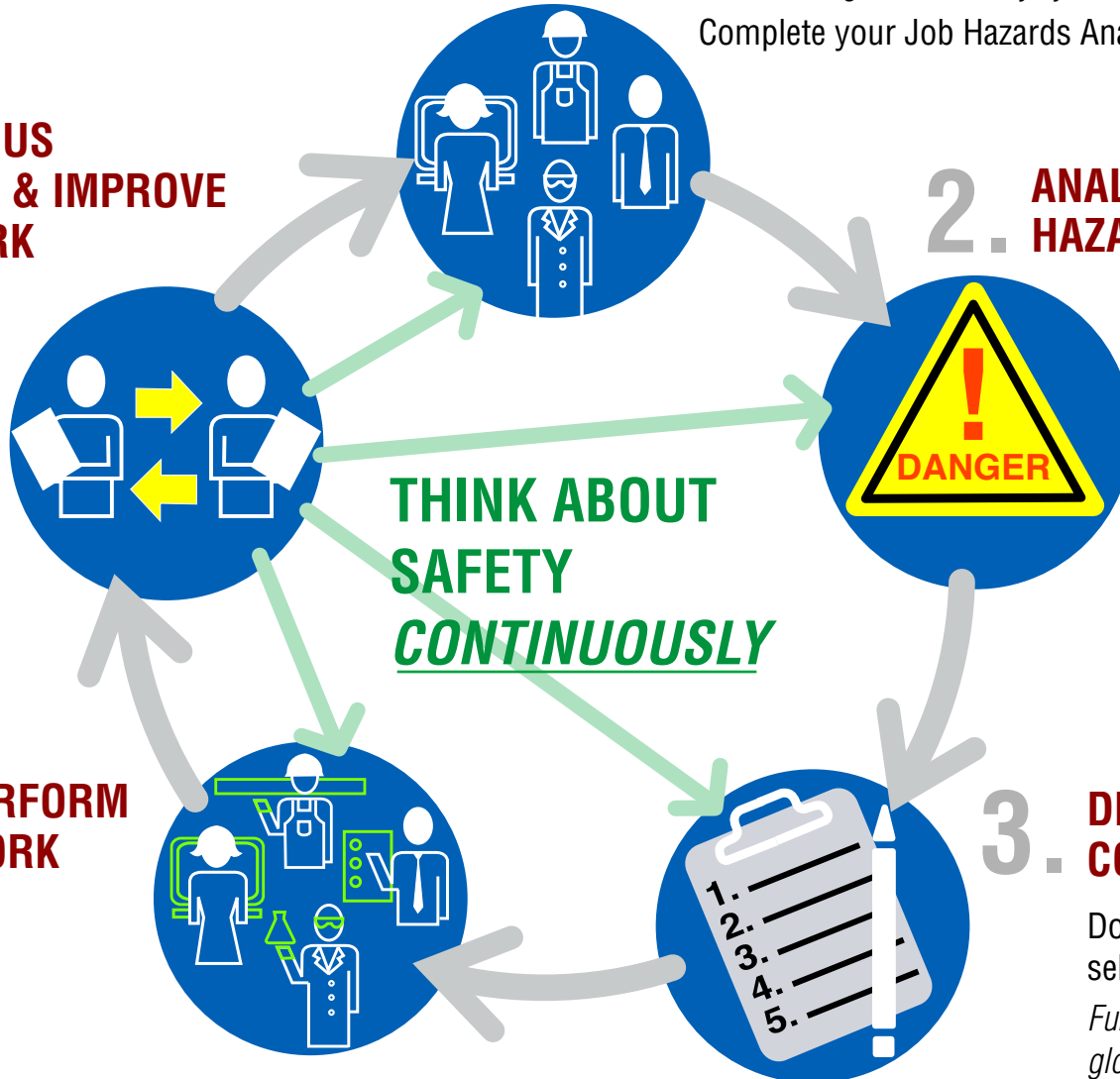


## 5. CONTINUOUS FEEDBACK & IMPROVE PLAN/WORK

- Review work whenever there are changes
- Do safety walkthrough
- Get feedback: self, others, Lab-wide



**THINK ABOUT  
SAFETY  
CONTINUOUSLY**



# Key Contacts • How You Fit In • Your Responsibilities



## Environmental Energy Technologies Division

### Your Supervisor's Responsibilities:

- Discuss your work with you
- Assign you to the appropriate work group(s)
- Review your Job Hazards Analysis (JHA) and approve
- As appropriate, modify individual employee JHA profiles

<p><b>Your Supervisor:</b></p> <hr/> <hr/>	<p><b>Your Work Lead:</b></p> <hr/> <hr/>
--	---

### Your Work Lead's Responsibilities:

- Discuss your work with you
- Assign you to the appropriate work group(s)
- Review your Job Hazards Analysis (JHA) and approve
- Develop work group hazard and training profile



**Your Division Director:**

*Arun Majumdar*

x7784  
AMajumdar@lbl.gov

- ### Your Division Director's Responsibilities:
- Provide leadership and oversight of all division safety matters
  - Enforce safety accountability with all EETD staff and guests

**Your Work Group(s):**

---



---

**You:**

---

- ### Your Responsibilities as a Worker:
- Incorporate safety into every aspect of your work
  - Take Job Hazards Analysis (JHA) to define your work, identify hazards and controls
  - Apply Integrated Safety Management (ISM) steps to all of your work
  - Take all training needed to do your work safely

**Your Safety Coordinator and Assistant Division Director for EH&S:**

*Robert KostECKi*  
x6002  
R\_KostECKi@lbl.gov

*Guy Kelley*  
x4703  
GOKelley@lbl.gov

- ### Your Division EH&S's Responsibilities:
- Direct and monitor division safety programs
  - Provide technical advice and support on all safety matters
  - Manage significant safety incidents

