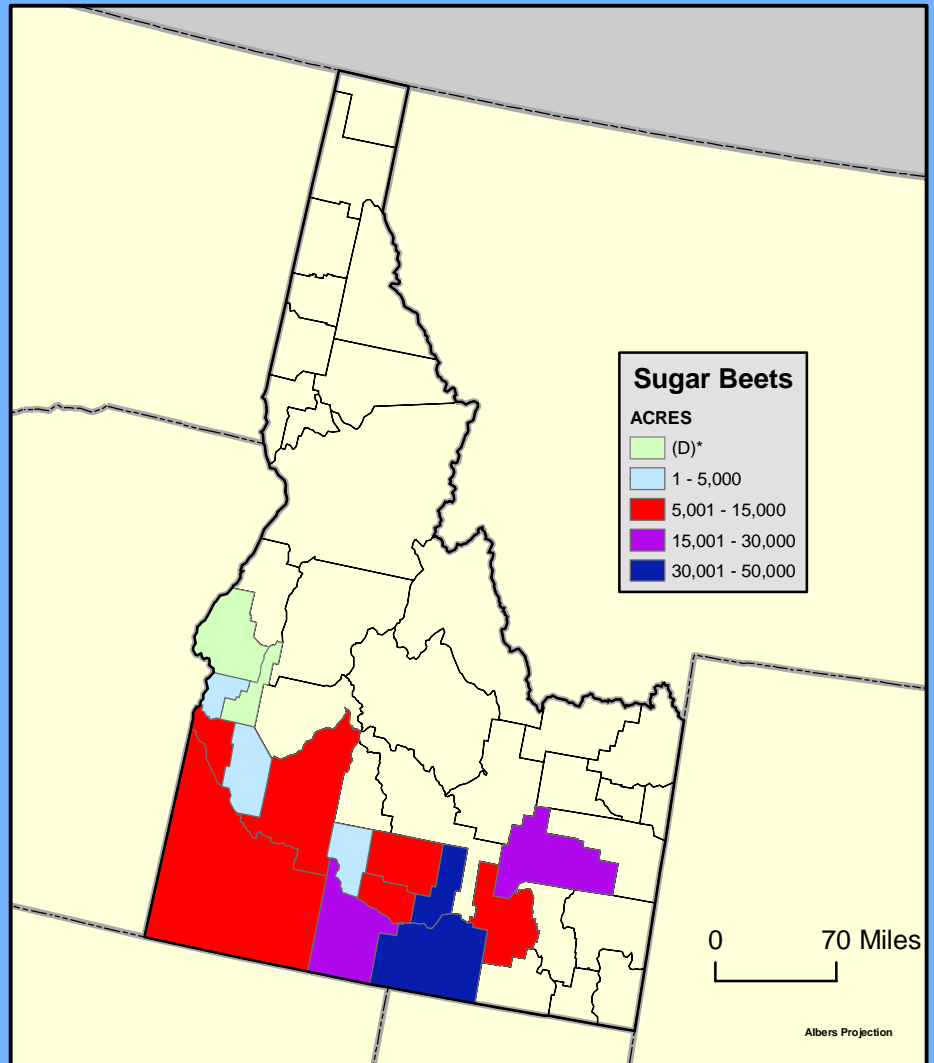


Sugar Contributes 5.4 percent to Idaho's \$4 billion Farm Income

2003 Leading commodities for cash receipts in ID	Value of receipts 1000	Percent of total receipts
All commodities	3,953,243	100
Livestock and products	2,177,350	55.1
Crops	1,775,893	44.9
1 Cattle and calves	1,062,063	26.9
2 Dairy products	1,004,985	25.4
3 Potatoes	560,006	14.2
4 Wheat	279,760	7.1
5 Hay	244,137	6.2
6 Sugar beets	212,285	5.4
7 Barley	148,007	3.7
8 Greenhouse/nursery	71,265	1.8
9 Onions	69,322	1.8
10 Dry beans	32,394	0.8
11 Aquaculture	30,012	0.8
12 Sheep and lambs	20,645	0.5
13 Mint	16,625	0.4
14 Corn	15,125	0.4
15 Chicken eggs	14,519	0.4
16 Apples	14,460	0.4
17 Lentils	11,035	0.3
18 Dry peas	8,978	0.2
19 Hops	8,531	0.2
20 Corn, sweet	7,295	0.2
21 Honey	6,210	0.2
22 Hogs	6,046	0.2
23 Peaches	4,491	0.1
24 Cherries	4,057	0.1



* (D) Withheld to avoid disclosing data for individual farms. (USDA-NASS)

Source: NASS 2002 Census of Agriculture - Volume 1 Geographic Area Series Census, State - County Data