



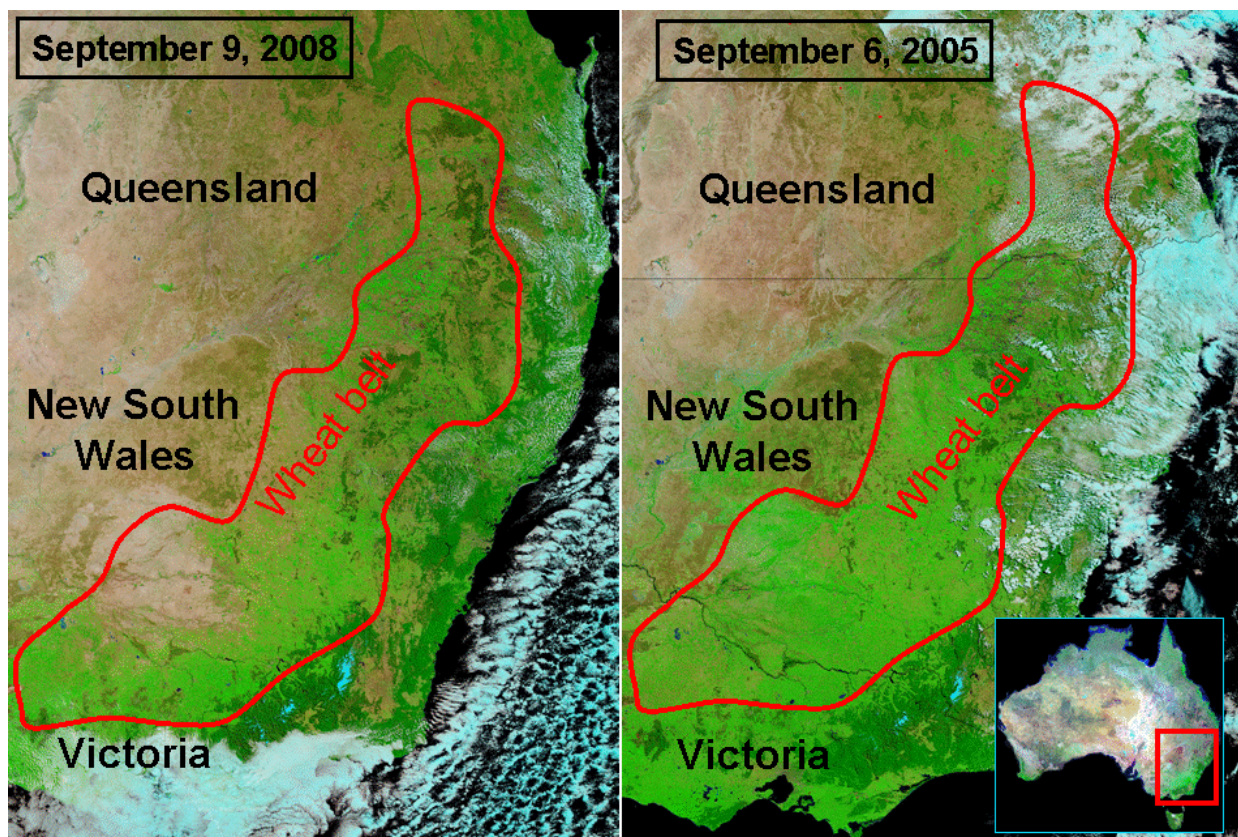
United States  
Department of  
Agriculture

Foreign  
Agricultural  
Service

Circular Series  
WAP 09-08  
September 2008

# World Agricultural Production

MODIS satellite imagery over the eastern Australia wheat belt extending from Queensland, New South Wales and Victoria. In this scene, the 2008 current conditions of the wheat belt are compared to 2005 (a more typical season). As of early September, vegetation condition in the wheat area is noticeably lower than in 2005.



## Australia: Estimated Wheat Production Decreased

Australia wheat production for 2008/09 is forecast at 22.0 million tons, down 3.0 million or 12 percent from last month, but up 9.0 million or 69 percent from last year. Area is estimated at 14.0 million hectares, unchanged from last month but up 1.7 million or 13 percent from last year. Seasonal weather conditions have been variable across the major cropping regions of Australia. Since major sowing operations commenced in May, periods of dryness have affected significant areas of the Australia wheat producing states at varying times. In the two largest wheat

Approved by the World Agricultural Outlook Board

producing states of New South Wales (30%) and Western Australia (37%), an unusually dry August reduced potential yield. In the southern producing states of Victoria (12%) and South Australia (17%) conditions have been marginally better but more rains are needed to maintain crop prospects. September precipitation is critical in determining Australia wheat yield. The maximum value of the normalized difference vegetation index (NDVI) for the entire season occurs during September in most growing areas and corresponds to the wheat crop at the flowering and reproductive stage. An historical analysis of satellite-derived September vegetation indices and Australia wheat yield reveal strong correlations (r-square 0.80 to 0.82) for the major wheat producing states of New South Wales, Victoria, South Australia and West Australia. Assuming normal crop development through September, the NDVI model indicates yield at 1.57 tons per hectare. Australia's five year average wheat yield is about 1.5 tons per hectare. *(For more information, contact Dath Mita at 202-720-1071)*

### **Kazakhstan: Estimated Wheat Output Down Nearly 30 Percent from Last Year**

The USDA estimates Kazakhstan wheat production for 2008/09 at 12.7 million tons, down 0.8 million or 6 percent from last month and down 3.9 million or 23 percent from last year. Area is estimated at 13.3 million hectares against 12.8 million last year. The grain harvest was about 60 percent complete as of September 4, and preliminary yield data indicate sharp yield decreases in all three major wheat-production territories of north-central Kazakhstan: Kostanai, Akmola, and North Kazakhstan. The reduction in yield is attributed chiefly to persistent dryness, especially in Akmola where yield is likely to drop by about 35 percent from last year. Note, however, that the year-to-year decreases are exaggerated somewhat by last year's unusually high harvest, and that estimated wheat production for 2008/09 is actually 0.2 million tons above the 5-year average. *(For more information, contact Mark Lindeman at 202-690-0143.)*

### **Ukraine Wheat and Barley: Production Soars But Quality Drops**

The USDA estimates Ukraine wheat production for 2008/09 at 24.5 million tons, up 2.5 million or 11 percent from last month and up 10.6 million or 76 percent from last year. Area is estimated at 7.0 million hectares, up 1.1 million from last year. Barley output is estimated at 12.5 million tons, up 0.5 million or 4 percent from last month and up 6.5 million or 108 percent from last year, when severe drought slashed yields of early spring crops. Estimated barley area is unchanged from last year at 4.1 million hectares. Harvest-progress reports from the Ministry of Agriculture cite year-to-year yield increases of approximately 50 percent for wheat and 100 percent for barley as of late August. Furthermore, the threat of significant flood-related harvest losses in western Ukraine never materialized: 99 percent of the sown area of both wheat and barley was harvested.

The abundant rain that boosted yield also contributed to a reduction in grain quality. Usually, but not always, wheat quality is lower in years of high yield, and a shortage of suitable grain-storage facilities for this year's wheat crop – the highest in nearly 20 years – will likely exacerbate the problem. According to preliminary data from the Ministry of Agricultural Policy of Ukraine, the share of food-quality wheat (which typically consists of 1<sup>st</sup>- through 3<sup>rd</sup>-class wheat) dropped from 40 percent in 2007/08 to 11 percent this year, while the share of 6<sup>th</sup> class wheat increased from 20 to 54 percent. *(For more information, contact Mark Lindeman at 202-690-0143.)*

## **European Union Wheat: Record Area and Record Production**

The USDA estimates European Union (EU) wheat production for 2008/09 at a record 147.2 million tons, up 4.0 million or 3 percent from last month and up 27.8 million or 23 percent from last year. Area is estimated at a record 26.7 million hectares, boosted by the EU's decision to suspend the set-aside requirement for 2008/09 and by the high market price of wheat at planting. Yield is forecast at 5.51 tons per hectare, compared to 4.83 tons per hectare last year and the five-year average of 5.05 tons per hectare. Winter wheat in southeast Europe benefitted from both above-normal spring rainfall and dry harvest weather. A prolonged, wet harvest is now complete in both France and Germany and output was higher than expected, particularly in Germany where dryness had been a serious concern. Poland's wheat crop also dodged a drought-related yield reduction. Currently, the areas of greatest uncertainty for wheat are the United Kingdom and Ireland, where persistent rainfall has delayed harvest and much of the crop remains uncut. Quality has declined in northern Europe and likely will continue dropping because of the wet weather that has soaked the region during harvest. *(For more information, please contact Bryan Purcell at 202-690-0138.)*

## **Russia: Estimated Wheat Production for 2008/09 Continues to Climb**

The USDA estimates Russia wheat production for 2008/09 at 60.0 million tons, up 3.0 million or 5 percent from last month and up 10.6 million or 21 percent from last year. The month-to-month increase in estimated production is based on harvest progress reports from the State Statistical Committee indicating remarkably high yields in European Russia. The estimated yield of 2.26 tons per hectare exceeds the previous record (set in 1990) by 10 percent. Total wheat area is estimated at 26.6 million hectares against 24.5 million last year. Winter wheat is grown in European Russia and typically comprises about 40 percent of Russia's total wheat area and 60 percent of production, although the share of winter wheat is likely to be higher than average this season due to a year-to-year increase in planted area combined with outstanding yields. Localized dryness has reduced yields in parts of the Siberian and Ural Districts, which account for a large share of Russia's spring wheat production. Drought was most severe in the Altai territory of western Siberia, which typically accounts for nearly 15 percent of the country's spring wheat output. The Siberian harvest was roughly 40 percent complete as of September 9.

Russia's barley crop benefitted as well from the favorable weather in European Russia. Production for 2008/09 is estimated at 21.0 million tons, up 3.0 million from last month and up 5.4 million from last year. Area is estimated at 9.6 million hectares, down 0.2 million from last year, and yield is estimated at a record 2.19 tons per hectare. With harvest about 80 percent complete, reports indicate a 34-percent year-to-year increase in yield, including an astonishing 57-percent jump in the Central District, which produces 25 to 30 percent of Russia's barley. *(For more information, contact Mark Lindeman at 202-690-0143.)*

### **Argentina: Wheat Area Limited by Dry Conditions**

The USDA forecasts Argentine wheat production for 2008/2009 at 12.5 million tons, down 3.5 million tons or 22 percent from last year and down 1 million tons or 7 percent from last month. Area is estimated at 4.5 million hectares, down 1.18 million hectares from last year and down 0.2 million hectares from last month, and the lowest level in 12 years. Due to the low estimated area, forecast production is also the lowest in 12 years. Yield is forecast at 2.78 tons per hectare, compared to the record high of 2.90 tons per hectare seen in 2005/2006 and the five-year average of 2.75 tons per hectare. Continued dry conditions this winter has not only hindered wheat planting but has now placed about one-third of the crop at jeopardy during the sensitive early stages of crop emergence and early growth. Temperatures were above normal during much of the winter, but recent cold weather may have resulted in frost damage in many parts of the wheat growing area, especially in late-planted fields. *(For more information, please call Denise McWilliams at 202-720-0107.)*

### **Europe Corn: Balkan Crop Suffers From Dryness**

The USDA estimates European Union corn production for 2008/09 at 58.1 million tons, 0.5 million lower than last month but 10.8 million or 22.9 percent higher than last year. Area is estimated at 8.7 million hectares, up nominally from last month but up 0.4 million or 4 percent from last year. Yield is estimated at 6.65 tons per hectare, compared to 6.73 tons per hectare last month and 5.65 tons per hectare last year. Estimated production was decreased significantly in the Balkan countries because summer dryness significantly reduced potential yield. Total August precipitation was particularly low across southeast Europe, drawing down soil moisture levels. Romania's corn crop was lowered 0.7 million tons from last month to 7.5 million tons. Bulgaria was lowered 0.2 million tons to 1.2 million tons, and Greece was lowered 0.1 million tons to 1.5 million tons. Serbia, a Balkan country but a non-member of the EU, also experienced dryness, and estimated corn output was lowered 0.5 million from last month to 6.0 million tons. Meanwhile, a larger-than-expected crop in Germany helped mitigate the Balkan corn losses. USDA estimates German production at 4.9 million tons, up 1.1 million from last year, and area at 0.5 million hectares, based on official statistics indicating record production and area. Area increased significantly in 2008/09 due largely to the EU's late autumn announcement of suspending the set-aside requirement, making further winter wheat planting in Germany nearly impossible, thereby forcing farmers to increase spring-sown crops, particularly corn. *(For more information, please contact Bryan Purcell at 202-690-0138.)*

### **China Corn: Record Production in 2008/09 Due to Higher Yield**

China's 2008/09 corn production is estimated at a record 156.0 million tons, up 3.0 million or 2 percent from last month and up 4.2 million or 3 percent from last year as higher estimated yield offset lower planted area. Corn area is estimated at 27.8 million hectares, unchanged from last month but down 0.2 million from last year. Farmers shifted from corn to soybeans in 2008 in response to higher relative profits for soybeans after the poor 2007/08 soybean harvest. The estimated yield of 5.61 tons per hectare is up 3.5 percent from last year and above the previous record set in 2006/07.

Very good growing conditions were reported in nearly every corn-producing province this season. Bumper crops are expected on the North China Plain, which experienced beneficial rainfall, seasonable temperatures, few extreme weather events, and only minor flooding/lodging problems in 2008. Record yield and production are expected in Northeast China, where drought conditions cut yields in 2007/08. Officials in Jilin, Liaoning, and Inner Mongolia reported that the crop benefitted from timely and abundant rainfall this year, while a recent crop survey in Heilongjiang revealed generally favorable growing conditions and higher yields than last year despite below-normal rainfall in August. *(For more information, contact Paulette Sandene at (202) 690-0133).*

### **Mexico: Favorable Weather Boosts Estimated Corn Output**

The USDA forecasts Mexican corn production for 2008/09 at 24.0 million tons, up 6 percent from last year. The year-to-year increase is attributed to higher forecast yields, a slight increase in harvested area, and ideal weather. According to the U.S. agricultural attaché in Mexico, farmers are using better seed varieties and higher sowing density to improve yields. In addition, the country is receiving normal to above-normal monsoon rains. Last year, the country was impacted by numerous tropical storms and hurricanes which caused substantial agricultural damage. *(For more information contact, Arnella Trent at 202-720-0881)*

### **China Soybeans: Higher Area and Production Expected in 2008/09**

China's 2008/09 soybean production is estimated at 16.5 million tons, up 0.5 million or 3 percent from last month and up 3.0 million or 22 percent from last year's drought-reduced crop. Soybean area is estimated at 9.4 million hectares, unchanged from last month but up 0.7 million or 8 percent from last year. High returns after the disappointing 2007/08 harvest and government policies that encouraged oilseed production led to the increase in planted area. The estimated yield of 1.76 tons per hectare is up 13 percent from last year and above the 5-year average of 1.68 tons per hectare.

Heilongjiang is China's most important soybean growing province, accounting for 37 to 40 percent of China's total soybean output. A recent crop survey in Heilongjiang revealed significantly higher planted area, very good growing conditions, and higher prospective yields than last year despite a significant rainfall deficit in August in parts of the province. Other important soybean growing provinces in northern and central China experienced generally favorable weather throughout the season, and normal yields are expected in these areas. *(For more information, contact Paulette Sandene at (202) 690-0133).*

### **Argentina: Soybean Area Forecast to Increase Again in 2008/2009**

The USDA forecasts Argentine soybean production for 2008/2009 at a record 50.5 million tons, up 1.0 million or 2 percent from last month and up 4 million or 9 percent from last year. Area is estimated at a record 18.0 million hectares, up 0.3 million from last month and up 1.63 million from last year. Yield is forecast at 2.80 tons per hectare, compared to the 2.99 tons-per-hectare record high in 2006/2007 and the five-year average of 2.71 tons per hectare. Incentive to plant continues to escalate due in part to increasing fertilizer prices, higher seed costs, and greater fuel expenses which favors soybeans over alternative crops. Continued dry weather in many areas of

Argentina has also limited wheat planting and stimulated farmers to plan for first-crop soybeans in the spring. Planting full-season soybeans, as compared to second-crop soybeans following wheat, can boost yield up to 20 percent, implying an expected yield for soybeans in the new production year of 2.80 metric tons per hectare. *(For more information, please call Denise McWilliams at 202-720-0107.)*

### **Argentina: Corn Area Forecast to Decrease for 2008/09**

The USDA forecasts Argentine corn production for 2008/2009 at 19.0 million tons, down 1.5 million tons or 7 percent from last year and down 3.0 million or 14 percent from last month. Area is estimated at 2.70 million hectares, down 0.30 million hectares from last month and down 0.51 million from last year. Yield is forecast at 7.04 tons per hectare, compared to the record high 8.04 tons per hectare in 2006/2007 and the five-year average of 6.96 tons per hectare. Several factors are likely to contribute to the forecast reduction in planted area: high export taxes during the first half of 2008, halts on corn exports, and higher input costs. Some seed orders are already being refused delivery by farmers as they consider switching some area from corn to oilseed crops. High production costs as well as market and harvest uncertainties have caused farmers in Argentina to consider planting crops requiring less fertilizer, pesticides, and labor than corn. In areas where dairies are located, farmers will plant enough corn to satisfy feed demands, but limited incentive to increase production beyond local demand will likely limit corn area for 2008/09. *(For more information, please call Denise McWilliams at 202-720-0107.)*

### **India: Cotton Production Forecast Increased**

India's 2008/09 cotton production is forecast at 24.5 million bales, up 0.5 million or 2 percent from last month, and down 0.1 million from last year. Area is forecast at 9.2 million hectares, up 0.1 million from last month, and down 0.35 million or 4 percent from last year. The *kharif* season (June-November) for 2008/09 cotton planting in India is almost complete. Planting is normally over by mid-August in the central states (Gujarat, Maharashtra, and Madhya Pradesh) and by the end of August in most southern states (Andhra Pradesh, Karnataka, Tamil Nadu). The major cotton growing areas experienced significantly below normal rainfall from July through mid-August. The rainfall situation improved considerably in late August and provided a boost to cotton planting progress. Despite delayed planting, yield prospects remain favorable due to a relatively higher proportion of Bt cotton varieties and absence of major pests and diseases. September rainfall is needed to maintain crop prospects in the southern growing states. *(For more information, contact Dath Mita at 202-720-1071.)*

### **Pakistan: Poor Monsoon Rains Reduce Estimated Cotton Production**

Pakistan cotton production for 2008/09 is forecast at 9.0 million bales, down 0.4 million from last month, but up 0.1 million from last year. Area is estimated at 2.9 million hectares, down 0.2 million from last month, and down 0.1 million from last year. Late planting, resulting from insufficient monsoon rainfall in key cotton growing areas, is the major cause for the reduced area and production estimates. Eighty percent of the cotton crop is grown in the state of Punjab and 20% in Sindh. *(For more information, contact Dath Mita at 202-720-1071)*



This report uses information from the Foreign Agricultural Service's (FAS) global network of agricultural attachés and counselors, official statistics of foreign governments and other foreign source materials, and the analysis of economic data and satellite imagery. Estimates of foreign area, yield, and production are from the International Production Assessment Division, FAS, and are reviewed by USDA's Inter-Agency Commodity Estimates Committee. Estimates of U.S. area, yield, and production are from USDA's National Agricultural Statistics Service. Numbers within the report may not add to totals because of rounding. This report reflects official USDA estimates released in the World Agricultural Supply and Demand Estimates (WASDE-462) September 12, 2008.

**Printed copies are available from the National Technical Information Service. Download an order form at [http://www.ntis.gov/products/specialty/usda/fas\\_a-g.asp](http://www.ntis.gov/products/specialty/usda/fas_a-g.asp), or call NTIS at 1-800-363-2068.**

The FAS International Production Assessment Branch prepared this report. The next issue of World Agricultural Production will be released after 9:30 a.m. Eastern Time, October 10, 2008.

### Conversion Table

#### Metric tons to bushels

Wheat, soybeans	=	MT * 36.7437
Corn, sorghum, rye	=	MT * 39.36825
Barley	=	MT * 45.929625
Oats	=	MT * 68.894438

#### Metric tons to 480-lb bales

Cotton	=	MT * 4.592917
--------	---	---------------

#### Metric tons to hundredweight

Rice	=	MT * 22.04622
------	---	---------------

#### Area & weight

1 hectare	=	2.471044 acres
1 kilogram	=	2.204622 pounds

For further information, contact:  
U.S. Department of Agriculture  
Foreign Agricultural Service  
Office of Global Analysis  
International Production Assessment Division  
Ag Box 1045, Room 6541, South Building  
Washington, DC 20250-1045  
Telephone: (202) 720-0888 Fax: (202) 720-8880

---

#### GENERAL INFORMATION

Division Director	Brad Doorn	202-690-0131 brad.doorn@fas.usda.gov
Deputy Director	Tom St. Clair	202-720-2974 tom.stclair@fas.usda.gov
Remote Sensing Specialist	Brad Doorn	202-690-0131 doorn@fas.usda.gov
USDA Remote Sensing Advisor	Glenn Bethel	202-720-1280 bethel@fas.usda.gov
Program Analyst	Mary Jackson	202-720-0886 jacksonma@fas.usda.gov
Agricultural Economist	Paul Provance	202-720-0873 paul.provance@fas.usda.gov

#### COUNTRY- AND REGION-SPECIFIC INFORMATION

South America	Denise McWilliams	202-720-0107 denise.mcwilliams@fas.usda.gov
Europe and North Africa	Bryan Purcell	202-690-0138 bryan.purcell@usda.gov
FSU-12, Argentina	Mark Lindeman	202-690-0143 lindeman@fas.usda.gov
Canada, Mexico, Central America, Caribbean	Arnella Trent	202-720-0881 arnella.trent@fas.usda.gov
China, East Asia	Paulette Sandene	202-690-0133 sandene@fas.usda.gov
Other South America		
South Asia, Indonesia, Australia & New Zealand	Dath Mita	202-720-1071 mita.dath@fas.usda.gov
Sub-Saharan Africa, Brazil Middle East and South East Asia	Curt Reynolds	202-690-0134 reynoldsc@fas.usda.gov
Eastern United States	Michael Shean	202-720-7366 shean@fas.usda.gov
Western United States	William Baker	202-690-0136 william.baker@fas.usda.gov
	Jim Crutchfield	202-690-0135 crutchfield@fas.usda.gov

---



**Table 01 World Crop Production Summary**  
1000 Metric Tons

Commodity	World -	Total Foreign	North America			EU-27 -	Former Soviet		Asia (WAP)					South America		Selected Other			All Others
			United States	Canada -	Mexico -		Russia -	Ukraine -	China -	India -	Indonesia	Pakistan	Thailand	Argentina	Brazil -	Australia	South Africa	Turkey -	
---Million metric tons---																			
<b>Wheat</b>																			
2006/07	596.3	547.0	49.3	25.3	3.2	124.9	44.9	14.0	108.5	69.4	nr	21.3	nr	15.2	2.2	10.8	2.1	17.5	87.8
2007/08 prel.	610.9	554.6	56.2	20.1	3.6	119.4	49.4	13.9	109.9	75.8	nr	23.3	nr	16.0	3.8	13.0	1.8	15.5	89.1
2008/09 proj.																			
Aug	670.8	603.7	67.0	25.0	3.9	143.2	57.0	22.0	114.0	78.4	nr	21.5	nr	13.5	5.0	25.0	2.0	16.5	76.8
Sep	676.3	609.3	67.0	25.4	3.9	147.2	60.0	24.5	114.0	78.4	nr	21.5	nr	12.5	5.4	22.0	2.0	16.5	76.0
<b>Coarse Grains</b>																			
2006/07	988.8	708.7	280.1	23.1	29.1	137.4	30.2	19.2	159.1	33.8	6.7	3.6	3.9	27.5	53.2	6.6	7.8	10.9	156.5
2007/08 prel.	1,076.4	725.3	351.1	27.8	29.7	136.2	29.3	14.6	159.0	40.8	7.5	3.6	3.9	25.4	61.0	9.9	13.0	9.5	153.8
2008/09 proj.																			
Aug	1,089.1	760.3	328.8	24.2	30.2	154.1	33.8	23.5	160.5	37.9	7.8	3.6	4.0	28.9	59.9	12.5	12.0	10.6	157.0
Sep	1,086.7	763.0	323.7	25.4	31.2	153.3	36.8	23.5	163.7	37.9	7.8	3.6	4.0	25.9	59.9	11.4	12.0	10.6	156.1
<b>Rice, Milled</b>																			
2006/07	419.9	413.6	6.2	nr	0.2	1.7	0.4	0.1	127.2	93.4	35.3	5.2	18.3	0.7	7.7	0.2	nr	0.4	123.0
2007/08 prel.	429.5	423.2	6.3	nr	0.2	1.7	0.5	0.1	129.8	96.4	35.5	5.5	19.3	0.8	8.4	0.0	nr	0.4	124.6
2008/09 proj.																			
Aug	430.8	424.2	6.6	nr	0.2	1.6	0.5	0.1	130.6	96.0	36.3	5.6	18.8	0.9	8.5	0.2	nr	0.4	124.6
Sep	432.0	425.4	6.6	nr	0.2	1.6	0.5	0.1	130.6	97.0	36.3	5.8	19.5	0.9	8.5	0.2	nr	0.4	123.9
<b>Total Grains</b>																			
2006/07	2,005.0	1,669.3	335.7	48.4	32.6	264.0	75.5	33.2	394.8	196.5	42.0	30.1	22.1	43.4	63.1	17.6	9.9	28.9	367.3
2007/08 prel.	2,116.7	1,703.1	413.6	47.9	33.5	257.3	79.2	28.6	398.7	213.1	43.0	32.4	23.2	42.2	73.2	23.0	14.9	25.4	367.6
2008/09 proj.																			
Aug	2,190.6	1,788.3	402.3	49.2	34.3	298.9	91.3	45.5	405.1	212.3	44.0	30.7	22.8	43.3	73.4	37.6	14.0	27.6	358.3
Sep	2,195.0	1,797.6	397.3	50.8	35.3	302.1	97.3	48.0	408.3	213.3	44.0	30.9	23.5	39.3	73.8	33.5	14.0	27.6	356.0
<b>Oilseeds</b>																			
2006/07	403.3	306.7	96.6	12.6	0.6	24.3	8.1	6.8	54.3	29.9	7.9	5.3	0.6	53.2	62.0	1.1	0.6	2.3	37.2
2007/08 prel.	388.7	308.7	80.0	12.4	0.6	24.4	6.9	6.0	52.6	33.9	8.2	4.6	0.6	52.0	64.0	1.4	1.3	2.0	37.8
2008/09 proj.																			
Aug	416.1	327.0	89.1	13.0	0.6	26.2	8.1	8.9	55.8	33.8	9.0	5.1	0.6	55.4	65.3	2.1	1.4	1.9	39.8
Sep	417.8	329.6	88.2	13.6	0.6	26.3	8.1	8.9	56.5	33.9	9.0	4.9	0.6	56.4	65.3	2.1	1.3	1.9	40.0
<b>Cotton</b>																			
2006/07	122.0	100.4	21.6	nr	0.7	1.6	nr	nr	35.5	21.8	0.0	9.9	0.0	0.8	7.0	1.4	0.1	3.8	17.9
2007/08 prel.	120.4	101.1	19.2	nr	0.6	1.5	nr	nr	37.0	24.6	0.0	8.9	0.0	0.7	7.2	0.6	0.1	3.1	16.8
2008/09 proj.																			
Aug	112.2	98.4	13.8	nr	0.7	1.3	nr	nr	35.5	24.0	0.0	9.4	0.0	0.8	6.4	1.2	0.1	2.3	16.7
Sep	112.2	98.3	13.8	nr	0.7	1.3	nr	nr	35.5	24.5	0.0	9.0	0.0	0.9	6.4	1.2	0.1	2.3	16.5

1/ Includes wheat, coarse grains, and rice (milled) shown above.

**Table 02 Wheat Area, Yield, and Production**  
**1000 Metric Tons**

Country / Region	Area (Million hectares)				Yield (Metric tons per hectare)				Production (Million metric tons)				Change in Production			
	Prel.		2008/09 Proj.		Prel.		2008/09 Proj.		Prel.		2008/09 Proj.		From last month		From last year	
	2006/07	2007/08	Aug	Sep	2006/07	2007/08	Aug	Sep	2006/07	2007/08	Aug	Sep	MMT	Percent	MMT	Percent
<b>World</b>	212.33	217.53	223.93	224.76	2.81	2.81	3.00	3.01	596.30	610.87	670.75	676.28	5.53	0.82	65.41	10.71
<b>United States</b>	18.94	20.64	22.90	22.90	2.60	2.72	2.93	2.93	49.32	56.25	67.02	67.02	0.00	0.00	10.77	19.15
<b>Total Foreign</b>	193.39	196.89	201.03	201.86	2.83	2.82	3.00	3.02	546.99	554.63	603.74	609.27	5.53	0.92	54.64	9.85
<b>China, Peoples</b>	22.96	23.10	23.40	23.40	4.72	4.76	4.87	4.87	108.47	109.86	114.00	114.00	0.00	0.00	4.14	3.77
<b>South Asia</b>																
India	26.40	28.00	28.00	28.00	2.63	2.71	2.80	2.80	69.35	75.81	78.40	78.40	0.00	0.00	2.59	3.42
Pakistan	8.36	8.40	8.20	8.20	2.55	2.77	2.62	2.62	21.28	23.30	21.50	21.50	0.00	0.00	-1.80	-7.73
Afghanistan	2.19	2.20	1.60	1.60	1.46	1.73	0.94	0.94	3.20	3.80	1.50	1.50	0.00	0.00	-2.30	-60.53
<b>Former Soviet Union</b>																
Russian Federation	23.70	24.50	26.10	26.60	1.89	2.02	2.18	2.26	44.90	49.40	57.00	60.00	3.00	5.26	10.60	21.46
Ukraine	5.50	5.95	6.70	7.00	2.55	2.34	3.28	3.50	14.00	13.90	22.00	24.50	2.50	11.36	10.60	76.26
Kazakhstan, Republic	12.40	12.75	13.00	13.30	1.09	1.30	1.04	0.95	13.50	16.60	13.50	12.70	-0.80	-5.93	-3.90	-23.49
Uzbekistan, Republic	1.30	1.30	1.30	1.30	4.50	4.77	4.62	4.62	5.85	6.20	6.00	6.00	0.00	0.00	-0.20	-3.23
<b>EU-27</b>																
France	5.24	5.23	5.50	5.50	6.75	6.25	7.16	7.16	35.39	32.74	39.40	39.40	0.00	0.00	6.66	20.36
Germany	3.12	3.01	3.19	3.20	7.20	6.96	7.49	8.11	22.43	20.93	23.90	25.95	2.05	8.58	5.02	24.00
United Kingdom	1.83	1.82	2.08	2.08	8.04	7.29	7.90	7.90	14.74	13.24	16.40	16.40	0.00	0.00	3.16	23.90
Poland	2.18	2.11	2.18	2.18	3.24	3.94	3.85	3.85	7.06	8.32	8.40	8.40	0.00	0.00	0.08	1.00
Spain	1.96	1.83	2.03	2.03	2.85	3.47	3.38	3.38	5.58	6.35	6.84	6.84	0.00	0.00	0.49	7.70
Italy	1.77	2.10	2.45	2.45	3.72	3.40	3.80	3.88	6.59	7.13	9.30	9.50	0.20	2.15	2.37	33.18
Denmark	0.68	0.68	0.67	0.67	7.04	6.63	7.01	7.01	4.77	4.49	4.70	4.70	0.00	0.00	0.21	4.68
Hungary	1.08	1.11	1.13	1.13	4.06	3.59	4.61	4.79	4.38	3.99	5.20	5.40	0.20	3.85	1.41	35.41
Romania	1.80	1.85	2.11	2.11	2.64	1.62	3.32	3.55	4.75	3.00	7.00	7.50	0.50	7.14	4.50	150.00
Bulgaria	0.92	1.04	1.03	1.10	3.45	2.30	3.61	3.91	3.18	2.39	3.70	4.30	0.60	16.22	1.91	79.84
<b>Canada</b>	9.68	8.64	10.00	10.00	2.61	2.32	2.50	2.54	25.27	20.05	25.00	25.40	0.40	1.60	5.35	26.68
<b>Australia</b>	11.80	12.35	14.00	14.00	0.92	1.06	1.79	1.57	10.82	13.04	25.00	22.00	-3.00	-12.00	8.96	68.72
<b>Middle East</b>																
Turkey	8.60	8.60	8.60	8.60	2.03	1.80	1.92	1.92	17.50	15.50	16.50	16.50	0.00	0.00	1.00	6.45
Iran	6.50	6.90	5.85	5.85	2.23	2.17	1.71	1.71	14.50	15.00	10.00	10.00	0.00	0.00	-5.00	-33.33
Syria	1.70	1.70	0.80	0.80	2.47	2.35	2.50	2.50	4.20	4.00	2.00	2.00	0.00	0.00	-2.00	-50.00
<b>North Africa</b>																
Egypt	1.29	1.29	1.29	1.29	6.43	6.43	6.43	6.43	8.27	8.28	8.30	8.30	0.00	0.00	0.03	0.30
Morocco	3.11	2.57	2.80	2.80	2.04	0.62	1.25	1.25	6.33	1.58	3.50	3.50	0.00	0.00	1.92	121.10
<b>Argentina</b>	5.29	5.68	4.70	4.50	2.88	2.82	2.87	2.78	15.20	16.00	13.50	12.50	-1.00	-7.41	-3.50	-21.88
<b>Others</b>	22.05	22.20	22.33	22.18	2.52	2.69	2.74	2.80	55.50	59.74	61.20	62.08	0.88	1.44	2.34	3.91

World and Selected Countries and Regions

9/12/2008 9:33:24 AM

**Table 03 Total Coarse Grain Area, Yield, and Production**  
**1000 Metric Tons**

Country / Region	Area (Million hectares)				Yield (Metric tons per hectare)				Production (Million metric tons)				Change in Production			
	Prel. 2006/07	2008/09 2007/08	2008/09 Aug	Proj. 2008/09 Sep	Prel. 2006/07	2008/09 2007/08	2008/09 Aug	Proj. 2008/09 Sep	Prel. 2006/07	2008/09 2007/08	2008/09 Aug	Proj. 2008/09 Sep	From last month MMT	Percent	From last year MMT	Percent
<b>World</b>	305.37	316.93	312.95	312.58	3.24	3.40	3.48	3.48	988.84	1,076.3	1,089.1	1,086.70	-2.41	-0.22	10.34	0.96
<b>United States</b>	32.53	39.92	36.86	36.86	8.61	8.79	8.92	8.78	280.11	351.06	328.78	323.70	-5.08	-1.55	-27.37	-7.80
<b>Total Foreign</b>	272.84	277.00	276.09	275.72	2.60	2.62	2.75	2.77	708.73	725.29	760.33	763.00	2.67	0.35	37.71	5.20
<b>China, Peoples</b>	30.76	30.90	30.66	30.66	5.17	5.15	5.23	5.34	159.10	159.02	160.50	163.70	3.20	1.99	4.69	2.95
<b>South America</b>																
Brazil	15.15	15.89	16.34	16.14	3.51	3.84	3.66	3.71	53.18	61.04	59.86	59.86	0.00	0.00	-1.19	-1.94
Argentina	4.07	4.51	4.74	4.44	6.77	5.63	6.10	5.84	27.54	25.40	28.92	25.92	-3.00	-10.37	0.52	2.05
<b>EU-27</b>																
France	3.75	3.78	3.93	3.93	6.97	6.98	7.27	7.27	26.13	26.37	28.59	28.59	0.00	0.00	2.22	8.41
Germany	3.59	3.58	3.84	3.84	5.87	5.53	6.19	6.25	21.05	19.80	23.75	24.00	0.25	1.03	4.19	21.17
Poland	6.13	6.18	5.90	5.90	2.39	3.05	2.93	2.93	14.66	18.82	17.30	17.30	0.00	0.00	-1.52	-8.10
Spain	4.24	4.27	4.55	4.55	3.07	3.95	3.42	3.42	13.00	16.85	15.58	15.58	0.00	0.00	-1.27	-7.52
Italy	1.60	1.54	1.58	1.58	7.09	7.31	7.52	7.52	11.32	11.26	11.89	11.89	0.00	0.00	0.62	5.51
Hungary	1.75	1.67	1.77	1.77	5.66	3.38	5.88	5.88	9.87	5.64	10.37	10.37	0.00	0.00	4.73	83.77
United Kingdom	1.02	1.05	1.15	1.15	5.93	5.60	5.94	5.94	6.07	5.90	6.83	6.83	0.00	0.00	0.93	15.84
Romania	3.11	3.15	3.13	3.13	3.10	1.50	3.11	2.89	9.64	4.74	9.73	9.03	-0.70	-7.19	4.29	90.51
<b>Former Soviet Union</b>																
Russian Federation	17.10	17.40	17.50	17.50	1.77	1.69	1.93	2.10	30.20	29.33	33.75	36.75	3.00	8.89	7.43	25.32
Ukraine	7.82	6.79	7.45	7.35	2.45	2.15	3.15	3.19	19.18	14.59	23.48	23.48	0.00	0.00	8.90	60.99
Kazakhstan, Republic	2.17	2.18	2.18	2.18	1.12	1.38	1.15	1.06	2.42	3.02	2.52	2.32	-0.20	-7.95	-0.70	-23.22
<b>Africa</b>																
Nigeria	17.95	17.25	17.95	17.95	1.45	1.39	1.44	1.44	26.00	24.00	25.80	25.80	0.00	0.00	1.80	7.50
South Africa, Republic	3.78	4.18	4.28	4.28	2.05	3.11	2.80	2.80	7.76	13.01	11.98	11.98	0.00	0.00	-1.03	-7.92
Ethiopia	5.85	5.96	5.98	5.98	1.89	2.00	1.86	1.86	11.08	11.93	11.10	11.10	0.00	0.00	-0.83	-6.96
Egypt	0.93	0.93	0.94	0.94	7.78	7.78	7.74	7.74	7.21	7.23	7.24	7.24	0.00	0.00	0.00	0.01
<b>India</b>	27.31	28.27	27.55	27.55	1.24	1.44	1.38	1.38	33.81	40.83	37.90	37.90	0.00	0.00	-2.93	-7.18
<b>Southeast Asia</b>																
Indonesia	3.30	3.56	3.70	3.70	2.03	2.11	2.09	2.09	6.70	7.50	7.75	7.75	0.00	0.00	0.25	3.33
Philippines	2.61	2.65	2.70	2.60	2.39	2.74	2.70	2.50	6.23	7.25	7.30	6.50	-0.80	-10.96	-0.75	-10.34
Thailand	1.03	1.04	1.05	1.05	3.74	3.79	3.85	3.85	3.87	3.92	4.02	4.02	0.00	0.00	0.10	2.55
<b>Mexico</b>	9.38	9.62	9.61	9.61	3.11	3.09	3.14	3.24	29.14	29.73	30.18	31.18	1.00	3.31	1.45	4.88
<b>Canada</b>	6.12	7.39	5.96	6.29	3.78	3.77	4.06	4.04	23.15	27.84	24.22	25.42	1.20	4.95	-2.42	-8.69
<b>Australia</b>	5.92	6.24	6.44	6.44	1.11	1.59	1.93	1.76	6.58	9.90	12.46	11.36	-1.10	-8.83	1.46	14.75
<b>Turkey</b>	4.43	4.46	4.36	4.36	2.47	2.14	2.44	2.44	10.95	9.55	10.65	10.65	0.00	0.00	1.10	11.52
<b>Others</b>	82.02	82.58	80.87	80.87	1.62	1.58	1.69	1.69	132.91	130.83	136.68	136.50	-0.18	-0.13	5.68	4.34

World and Selected Countries and Regions

9/12/2008 9:33:46 AM

**Table 04 Corn Area, Yield, and Production**  
**1000 Metric Tons**

Country / Region	Area (Million hectares)				Yield (Metric tons per hectare)				Production (Million metric tons)				Change in Production			
	2006/07	Prel. 2007/08	2008/09 Aug	Proj. Sep	2006/07	Prel. 2007/08	2008/09 Aug	Proj. Sep	2006/07	Prel. 2007/08	2008/09 Aug	Proj. Sep	From last month MMT	Percent	From last year MMT	Percent
<b>World</b>	149.22	158.85	157.99	157.35	4.77	4.97	5.00	4.98	712.23	790.24	789.58	782.96	-6.62	-0.84	-7.28	-0.92
<b>United States</b>	28.59	35.02	32.09	32.09	9.36	9.48	9.73	9.56	267.60	332.09	312.13	306.65	-5.47	-1.75	-25.44	-7.66
<b>Total Foreign</b>	120.63	123.82	125.90	125.26	3.69	3.70	3.79	3.80	444.64	458.15	477.46	476.31	-1.15	-0.24	18.16	3.96
<b>China, Peoples</b>	27.90	28.00	27.80	27.80	5.43	5.42	5.50	5.61	151.60	151.83	153.00	156.00	3.00	1.96	4.17	2.75
<b>South America</b>																
Brazil	14.00	14.70	15.00	14.80	3.64	3.99	3.80	3.85	51.00	58.60	57.00	57.00	0.00	0.00	-1.60	-2.73
Argentina	2.80	3.21	3.00	2.70	8.04	6.39	7.33	7.04	22.50	20.50	22.00	19.00	-3.00	-13.64	-1.50	-7.32
<b>Mexico</b>	7.38	7.35	7.45	7.45	3.03	3.08	3.09	3.22	22.35	22.65	23.00	24.00	1.00	4.35	1.35	5.96
<b>EU-27</b>																
France	1.47	1.48	1.57	1.57	8.70	9.67	8.92	8.92	12.78	14.29	14.00	14.00	0.00	0.00	-0.29	-2.03
Italy	1.06	1.01	1.06	1.06	8.87	9.41	9.43	9.43	9.40	9.50	10.00	10.00	0.00	0.00	0.50	5.26
Hungary	1.22	1.12	1.20	1.20	6.64	3.60	7.00	7.00	8.10	4.03	8.40	8.40	0.00	0.00	4.37	108.44
Romania	2.56	2.55	2.50	2.50	3.32	1.54	3.28	3.00	8.50	3.93	8.20	7.50	-0.70	-8.54	3.57	90.99
Poland	0.31	0.26	0.32	0.32	4.08	6.49	5.31	5.31	1.26	1.70	1.70	1.70	0.00	0.00	0.00	0.00
<b>India</b>	7.80	8.30	8.30	8.30	1.94	2.33	2.17	2.17	15.10	19.31	18.00	18.00	0.00	0.00	-1.31	-6.78
<b>Canada</b>	1.06	1.37	1.16	1.18	8.47	8.50	8.36	8.39	8.99	11.65	9.70	9.90	0.20	2.06	-1.75	-15.02
<b>Indonesia</b>	3.30	3.56	3.70	3.70	2.03	2.11	2.09	2.09	6.70	7.50	7.75	7.75	0.00	0.00	0.25	3.33
<b>Ukraine</b>	1.70	1.90	2.30	2.20	3.76	3.89	4.13	4.09	6.40	7.40	9.50	9.00	-0.50	-5.26	1.60	21.62
<b>Serbia</b>	1.17	1.21	1.30	1.30	5.48	3.36	5.00	4.62	6.42	4.05	6.50	6.00	-0.50	-7.69	1.95	48.00
<b>Egypt</b>	0.72	0.72	0.73	0.73	8.58	8.58	8.52	8.52	6.15	6.17	6.18	6.18	0.00	0.00	0.00	0.02
<b>Philippines</b>	2.61	2.65	2.70	2.60	2.39	2.74	2.70	2.50	6.23	7.25	7.30	6.50	-0.80	-10.96	-0.75	-10.34
<b>Vietnam</b>	1.07	1.15	1.20	1.20	3.96	4.00	4.17	4.17	4.25	4.60	5.00	5.00	0.00	0.00	0.40	8.70
<b>Thailand</b>	1.00	1.00	1.01	1.01	3.80	3.85	3.91	3.91	3.80	3.85	3.95	3.95	0.00	0.00	0.10	2.60
<b>Russian Federation</b>	1.00	1.30	1.60	1.60	3.60	3.04	3.63	3.63	3.60	3.95	5.80	5.80	0.00	0.00	1.85	46.84
<b>Sub-Saharan Africa</b>																
South Africa, Republic	2.90	3.30	3.40	3.40	2.52	3.79	3.38	3.38	7.30	12.50	11.50	11.50	0.00	0.00	-1.00	-8.00
Nigeria	4.70	4.00	4.70	4.70	1.66	1.63	1.66	1.66	7.80	6.50	7.80	7.80	0.00	0.00	1.30	20.00
Ethiopia	2.18	2.32	2.30	2.30	2.30	2.41	2.22	2.22	5.00	5.60	5.10	5.10	0.00	0.00	-0.50	-8.93
Zimbabwe	1.25	1.30	1.30	1.30	0.56	0.37	0.65	0.65	0.70	0.48	0.85	0.85	0.00	0.00	0.38	78.95
<b>Turkey</b>	0.43	0.45	0.55	0.55	6.59	6.44	7.27	7.27	2.80	2.90	4.00	4.00	0.00	0.00	1.10	37.93
<b>Others</b>	29.06	29.62	29.75	29.79	2.27	2.28	2.39	2.40	65.91	67.41	71.23	71.38	0.15	0.21	3.98	5.90

World and Selected Countries and Regions

9/12/2008 9:33:26 AM

**Table 05 Barley Area, Yield, and Production**  
**1000 Metric Tons**

Country / Region	Area (Million hectares)				Yield (Metric tons per hectare)				Production (Million metric tons)				Change in Production			
	Prel. 2006/07	2008/09 2007/08	2008/09 Aug	Proj. Sep	Prel. 2006/07	2008/09 2007/08	2008/09 Aug	Proj. Sep	Prel. 2006/07	2008/09 2007/08	2008/09 Aug	Proj. Sep	From last month MMT	Percent	From last year MMT	Percent
<b>World</b>	57.44	57.52	55.24	55.30	2.39	2.32	2.66	2.71	137.42	133.16	146.83	149.90	3.07	2.09	16.74	12.57
<b>United States</b>	1.19	1.42	1.47	1.47	3.29	3.25	3.22	3.22	3.92	4.61	4.75	4.75	0.00	0.00	0.13	2.91
<b>Total Foreign</b>	56.25	56.10	53.77	53.83	2.37	2.29	2.64	2.70	133.50	128.55	142.08	145.15	3.07	2.16	16.61	12.92
<b>Russian Federation</b>	10.00	9.80	9.60	9.60	1.81	1.60	1.88	2.19	18.10	15.65	18.00	21.00	3.00	16.67	5.35	34.19
<b>EU-27</b>																
Germany	2.03	1.92	2.00	1.97	5.91	5.42	6.00	6.12	11.97	10.38	12.00	12.05	0.05	0.42	1.67	16.04
France	1.67	1.70	1.77	1.77	6.24	5.57	6.60	6.60	10.40	9.47	11.65	11.65	0.00	0.00	2.18	23.07
Spain	3.23	3.22	3.47	3.47	2.58	3.60	3.05	3.05	8.32	11.60	10.61	10.61	0.00	0.00	-0.99	-8.53
United Kingdom	0.88	0.90	0.99	0.99	5.95	5.66	5.96	5.96	5.24	5.08	5.90	5.90	0.00	0.00	0.82	16.16
Denmark	0.67	0.63	0.65	0.65	4.83	4.91	5.00	5.00	3.25	3.09	3.25	3.25	0.00	0.00	0.17	5.35
Poland	1.22	1.23	1.20	1.20	2.59	3.25	2.83	2.83	3.16	4.01	3.40	3.40	0.00	0.00	-0.61	-15.17
Czech Republic	0.53	0.50	0.48	0.48	3.59	3.80	4.45	4.45	1.90	1.89	2.14	2.14	0.00	0.00	0.24	12.78
Finland	0.56	0.53	0.62	0.62	3.50	3.72	3.58	3.33	1.97	1.98	2.20	2.05	-0.15	-6.82	0.07	3.33
Sweden	0.31	0.32	0.33	0.33	3.63	4.48	4.15	4.15	1.11	1.44	1.35	1.35	0.00	0.00	-0.09	-6.18
Italy	0.33	0.34	0.34	0.34	3.89	3.53	3.99	3.99	1.30	1.20	1.35	1.35	0.00	0.00	0.15	12.69
Hungary	0.29	0.32	0.33	0.33	3.68	3.21	3.81	3.81	1.08	1.04	1.25	1.25	0.00	0.00	0.21	20.08
Austria	0.21	0.19	0.19	0.19	4.44	4.20	4.29	4.21	0.91	0.81	0.82	0.80	-0.02	-1.84	-0.01	-1.36
<b>Ukraine</b>	5.20	4.10	4.10	4.10	2.18	1.46	2.93	3.05	11.35	6.00	12.00	12.50	0.50	4.17	6.50	108.33
<b>Canada</b>	3.22	4.00	3.30	3.40	2.97	2.75	3.18	3.21	9.57	11.00	10.50	10.90	0.40	3.81	-0.10	-0.91
<b>Australia</b>	4.18	4.41	4.50	4.50	1.02	1.34	1.89	1.67	4.26	5.92	8.50	7.50	-1.00	-11.76	1.58	26.69
<b>Turkey</b>	3.60	3.60	3.40	3.40	2.08	1.67	1.76	1.76	7.50	6.00	6.00	6.00	0.00	0.00	0.00	0.00
<b>China, Peoples</b>	0.92	0.95	0.96	0.96	3.61	3.35	3.65	3.65	3.30	3.19	3.50	3.50	0.00	0.00	0.32	9.89
<b>Iran</b>	1.70	1.70	1.30	1.30	1.76	1.76	1.54	1.54	3.00	3.00	2.00	2.00	0.00	0.00	-1.00	-33.33
<b>Morocco</b>	2.19	1.99	2.05	2.05	1.16	0.38	0.59	0.59	2.54	0.76	1.20	1.20	0.00	0.00	0.44	57.27
<b>Kazakhstan,</b>	1.80	1.80	1.80	1.80	1.06	1.39	1.11	1.00	1.90	2.50	2.00	1.80	-0.20	-10.00	-0.70	-28.00
<b>Ethiopia</b>	1.33	1.33	1.30	1.30	1.60	1.89	1.62	1.62	2.13	2.50	2.10	2.10	0.00	0.00	-0.40	-16.00
<b>Belarus</b>	0.55	0.65	0.55	0.55	2.45	2.62	2.73	3.27	1.35	1.70	1.50	1.80	0.30	20.00	0.10	5.88
<b>India</b>	0.70	0.77	0.75	0.75	1.74	1.73	1.87	1.87	1.22	1.33	1.40	1.40	0.00	0.00	0.07	5.26
<b>Argentina</b>	0.34	0.41	0.60	0.60	3.76	3.54	3.42	3.42	1.27	1.46	2.05	2.05	0.00	0.00	0.59	40.41
<b>Mexico</b>	0.35	0.35	0.35	0.35	2.57	2.57	2.57	2.57	0.90	0.90	0.90	0.90	0.00	0.00	0.00	0.00
<b>Iraq</b>	1.41	1.44	0.50	0.50	0.89	0.74	0.90	0.90	1.25	1.06	0.45	0.45	0.00	0.00	-0.61	-57.55
<b>Algeria</b>	0.70	0.70	0.70	0.70	1.00	1.00	1.00	1.00	0.70	0.70	0.70	0.70	0.00	0.00	0.00	0.00
<b>Others</b>	6.15	6.30	5.66	5.65	2.05	2.05	2.36	2.40	12.57	12.89	13.37	13.56	0.19	1.38	0.67	5.16

World and Selected Countries and Regions

9/12/2008 9:33:26 AM

**Table 06 Oats Area, Yield, and Production**  
**1000 Metric Tons**

Country / Region	Area (Million hectares)				Yield (Metric tons per hectare)				Production (Million metric tons)				Change in Production			
	Prel. 2006/07	2007/08	2008/09 Aug	Proj. Sep	Prel. 2006/07	2007/08	2008/09 Aug	Proj. Sep	Prel. 2006/07	2007/08	2008/09 Aug	Proj. Sep	From last month MMT	Percent	From last year MMT	Percent
<b>World</b>	13.02	13.24	12.65	12.84	1.78	1.94	1.97	1.98	23.17	25.63	24.93	25.48	0.55	2.21	-0.15	-0.59
<b>United States</b>	0.63	0.61	0.58	0.58	2.14	2.18	2.23	2.23	1.36	1.33	1.31	1.31	0.00	0.00	-0.03	-1.88
<b>Total Foreign</b>	12.38	12.63	12.07	12.26	1.76	1.92	1.96	1.97	21.81	24.30	23.62	24.17	0.55	2.33	-0.13	-0.51
<b>Russian Federation</b>	3.60	3.70	3.40	3.40	1.36	1.46	1.47	1.47	4.90	5.40	5.00	5.00	0.00	0.00	-0.40	-7.41
<b>Canada</b>	1.54	1.81	1.30	1.50	2.51	2.60	2.69	2.73	3.85	4.70	3.50	4.10	0.60	17.14	-0.60	-12.77
<b>EU-27</b>																
Poland	0.54	0.59	0.56	0.56	1.92	2.55	2.14	2.14	1.04	1.49	1.20	1.20	0.00	0.00	-0.29	-19.46
Finland	0.35	0.35	0.36	0.36	2.92	3.52	3.33	3.13	1.03	1.22	1.20	1.13	-0.08	-6.25	-0.10	-7.94
Spain	0.50	0.53	0.55	0.55	1.84	2.47	2.06	2.06	0.92	1.30	1.12	1.12	0.00	0.00	-0.18	-13.75
Germany	0.18	0.18	0.19	0.18	4.51	4.09	4.47	4.58	0.83	0.73	0.85	0.83	-0.03	-2.94	0.10	13.32
Sweden	0.20	0.20	0.23	0.23	3.18	4.37	3.91	3.91	0.64	0.89	0.90	0.90	0.00	0.00	0.01	0.90
United Kingdom	0.12	0.13	0.14	0.14	6.02	5.48	6.00	6.00	0.73	0.71	0.81	0.81	0.00	0.00	0.10	13.76
France	0.11	0.11	0.11	0.11	4.44	3.90	4.57	4.57	0.48	0.41	0.48	0.48	0.00	0.00	0.07	16.22
Italy	0.16	0.16	0.15	0.15	2.45	2.33	2.33	2.33	0.40	0.36	0.35	0.35	0.00	0.00	-0.01	-3.05
Denmark	0.07	0.06	0.07	0.07	3.97	4.73	4.69	4.69	0.27	0.30	0.31	0.31	0.00	0.00	0.01	2.35
Romania	0.20	0.21	0.21	0.21	1.71	1.19	1.64	1.64	0.35	0.25	0.35	0.35	0.00	0.00	0.10	38.34
Czech Republic	0.06	0.06	0.05	0.05	2.67	2.74	3.18	3.18	0.16	0.16	0.16	0.16	0.00	0.00	0.00	-1.89
Hungary	0.06	0.06	0.06	0.06	2.56	2.07	2.42	2.42	0.15	0.12	0.15	0.15	0.00	0.00	0.02	18.85
Austria	0.04	0.03	0.03	0.03	3.74	3.00	3.50	3.50	0.13	0.09	0.11	0.11	0.00	0.00	0.01	12.90
Ireland	0.02	0.02	0.02	0.02	7.35	7.94	7.94	7.94	0.13	0.14	0.14	0.14	0.00	0.00	0.00	0.00
Lithuania	0.06	0.09	0.06	0.06	1.07	2.09	2.03	2.03	0.06	0.18	0.13	0.13	0.00	0.00	-0.05	-27.78
<b>Australia</b>	1.00	0.90	1.00	1.00	0.75	0.94	1.50	1.40	0.75	0.84	1.50	1.40	-0.10	-6.67	0.56	66.07
<b>Ukraine</b>	0.44	0.35	0.45	0.45	1.59	1.57	1.78	1.78	0.70	0.55	0.80	0.80	0.00	0.00	0.25	45.45
<b>China, Peoples</b>	0.50	0.50	0.50	0.50	1.20	1.20	1.20	1.20	0.60	0.60	0.60	0.60	0.00	0.00	0.00	0.00
<b>Belarus</b>	0.25	0.25	0.25	0.25	2.20	2.40	2.60	3.20	0.55	0.60	0.65	0.80	0.15	23.08	0.20	33.33
<b>Brazil</b>	0.35	0.35	0.35	0.35	1.36	1.36	1.36	1.36	0.48	0.48	0.48	0.48	0.00	0.00	0.00	0.00
<b>Argentina</b>	0.25	0.22	0.26	0.26	1.60	2.10	1.96	1.96	0.40	0.47	0.50	0.50	0.00	0.00	0.03	6.38
<b>Chile</b>	0.08	0.08	0.08	0.08	4.75	4.75	4.75	4.75	0.38	0.38	0.38	0.38	0.00	0.00	0.00	0.00
<b>Norway</b>	0.09	0.09	0.09	0.09	4.19	4.19	4.19	4.19	0.36	0.36	0.36	0.36	0.00	0.00	0.00	0.00
<b>Turkey</b>	0.16	0.16	0.16	0.16	1.87	1.87	1.87	1.87	0.29	0.29	0.29	0.29	0.00	0.00	0.00	0.00
<b>Kazakhstan,</b>	0.14	0.16	0.16	0.16	1.00	1.00	1.00	1.00	0.14	0.16	0.16	0.16	0.00	0.00	0.00	0.00
<b>Serbia</b>	0.07	0.07	0.07	0.07	1.85	1.85	1.85	1.85	0.12	0.12	0.12	0.12	0.00	0.00	0.00	0.00
<b>Others</b>	1.26	1.25	1.25	1.25	0.79	0.80	0.84	0.84	0.99	0.99	1.05	1.05	0.00	0.10	0.06	5.95

World and Selected Countries and Regions

9/12/2008 9:33:27 AM

**Table 07 Rye Area, Yield, and Production**  
**1000 Metric Tons**

Country / Region	Area (Million hectares)				Yield (Metric tons per hectare)				Production (Million metric tons)				Change in Production			
	Prel.		2008/09 Proj.		Prel.		2008/09 Proj.		Prel.		2008/09 Proj.		From last month		From last year	
	2006/07	2007/08	Aug	Sep	2006/07	2007/08	Aug	Sep	2006/07	2007/08	Aug	Sep	MMT	Percent	MMT	Percent
<b>World</b>	5.69	6.22	6.53	6.53	2.18	2.30	2.55	2.53	12.38	14.29	16.63	16.50	-0.13	-0.76	2.22	15.51
<b>United States</b>	0.11	0.12	0.11	0.11	1.65	1.72	1.69	1.69	0.18	0.20	0.18	0.18	0.00	0.00	-0.02	-8.96
<b>Total Foreign</b>	5.58	6.11	6.43	6.43	2.19	2.31	2.56	2.54	12.20	14.09	16.45	16.32	-0.13	-0.77	2.23	15.86
<b>EU-27</b>																
Poland	1.32	1.32	1.32	1.32	1.99	2.36	2.42	2.42	2.62	3.13	3.20	3.20	0.00	0.00	0.07	2.37
Germany	0.54	0.67	0.75	0.74	4.91	4.02	5.51	5.00	2.64	2.70	4.13	3.70	-0.43	-10.41	1.00	37.14
Spain	0.10	0.11	0.12	0.12	1.61	2.33	2.17	2.17	0.16	0.26	0.25	0.25	0.00	0.00	-0.01	-3.47
Lithuania	0.05	0.07	0.08	0.08	1.76	2.40	2.38	2.38	0.09	0.18	0.18	0.18	0.00	0.00	0.01	3.43
Latvia	0.04	0.06	0.05	0.05	2.72	3.12	2.65	2.65	0.12	0.18	0.14	0.14	0.00	0.00	-0.04	-20.99
France	0.03	0.03	0.03	0.03	4.65	4.33	4.50	4.50	0.12	0.12	0.12	0.12	0.00	0.00	0.00	0.00
Denmark	0.03	0.03	0.02	0.02	4.64	4.93	4.75	4.75	0.13	0.14	0.10	0.10	0.00	0.00	-0.04	-31.16
Czech Republic	0.02	0.04	0.04	0.04	3.41	4.78	4.49	4.49	0.08	0.18	0.19	0.19	0.00	0.00	0.02	9.04
Austria	0.03	0.05	0.05	0.05	3.48	4.02	4.50	4.50	0.09	0.19	0.23	0.23	0.00	0.00	0.04	19.05
Sweden	0.02	0.03	0.03	0.03	4.92	5.52	5.00	5.00	0.12	0.14	0.15	0.15	0.00	0.00	0.01	8.70
Hungary	0.04	0.04	0.04	0.04	2.54	1.97	2.16	2.16	0.10	0.08	0.10	0.10	0.00	0.00	0.02	23.38
Slovakia	0.01	0.02	0.03	0.03	2.38	2.57	3.00	3.15	0.03	0.05	0.08	0.08	0.00	5.13	0.03	51.85
Finland	0.02	0.03	0.04	0.04	2.32	2.72	2.29	2.29	0.05	0.09	0.08	0.08	0.00	0.00	-0.01	-8.05
United Kingdom	0.01	0.01	0.01	0.01	6.14	6.00	6.67	6.67	0.04	0.04	0.04	0.04	0.00	0.00	0.00	11.11
Romania	0.02	0.01	0.01	0.01	1.94	1.69	2.14	2.14	0.03	0.02	0.03	0.03	0.00	0.00	0.01	36.36
Greece	0.01	0.02	0.02	0.02	1.79	1.87	1.83	1.83	0.03	0.03	0.03	0.03	0.00	0.00	0.01	17.86
Portugal	0.02	0.02	0.02	0.02	1.04	1.05	0.95	0.95	0.02	0.02	0.02	0.02	0.00	0.00	0.00	-9.09
<b>Russian Federation</b>	1.80	2.10	2.30	2.30	1.67	1.86	1.91	1.91	3.00	3.90	4.40	4.40	0.00	0.00	0.50	12.82
<b>Belarus</b>	0.55	0.60	0.50	0.50	2.18	2.17	2.20	2.80	1.20	1.30	1.10	1.40	0.30	27.27	0.10	7.69
<b>Ukraine</b>	0.36	0.35	0.45	0.45	1.67	1.57	2.22	2.22	0.60	0.55	1.00	1.00	0.00	0.00	0.45	81.82
<b>Canada</b>	0.16	0.11	0.12	0.13	2.34	2.09	2.42	2.23	0.38	0.23	0.29	0.29	0.00	0.00	0.06	26.09
<b>Turkey</b>	0.15	0.15	0.15	0.15	1.60	1.60	1.60	1.60	0.24	0.24	0.24	0.24	0.00	0.00	0.00	0.00
<b>Argentina</b>	0.05	0.05	0.05	0.05	1.15	1.15	1.15	1.15	0.06	0.06	0.06	0.06	0.00	0.00	0.00	0.00
<b>Kazakhstan,</b>	0.07	0.07	0.07	0.07	0.71	0.71	0.71	0.71	0.05	0.05	0.05	0.05	0.00	0.00	0.00	0.00
<b>Australia</b>	0.04	0.04	0.04	0.04	0.57	0.57	0.57	0.57	0.02	0.02	0.02	0.02	0.00	0.00	0.00	0.00
<b>Switzerland</b>	0.00	0.00	0.00	0.00	6.67	6.67	6.67	6.67	0.02	0.02	0.02	0.02	0.00	0.00	0.00	0.00
<b>Others</b>	0.08	0.09	0.10	0.10	1.87	2.18	2.08	2.08	0.16	0.20	0.21	0.21	0.00	0.00	0.01	7.07

World and Selected Countries and Regions

9/12/2008 9:33:27 AM



**Table 08 Sorghum Area, Yield, and Production**  
**1000 Metric Tons**

Country / Region	Area (Million hectares)				Yield (Metric tons per hectare)				Production (Million metric tons)				Change in Production			
	2006/07	Prel. 2007/08	2008/09 Aug	Proj. Sep	2006/07	Prel. 2007/08	2008/09 Aug	Proj. Sep	2006/07	Prel. 2007/08	2008/09 Aug	Proj. Sep	From last month MMT	Percent	From last year MMT	Percent
<b>World</b>	39.41	40.30	39.53	39.54	1.45	1.57	1.55	1.57	56.96	63.37	61.43	62.06	0.64	1.04	-1.31	-2.07
<b>United States</b>	2.00	2.75	2.61	2.61	3.53	4.66	4.00	4.15	7.05	12.83	10.42	10.81	0.39	3.76	-2.02	-15.72
<b>Total Foreign</b>	37.42	37.54	36.92	36.93	1.33	1.35	1.38	1.39	49.91	50.55	51.01	51.25	0.25	0.48	0.71	1.39
<b>Sub-Saharan Africa</b>																
Nigeria	7.40	7.40	7.40	7.40	1.42	1.35	1.42	1.42	10.50	10.00	10.50	10.50	0.00	0.00	0.50	5.00
Sudan	6.75	6.60	6.60	6.60	0.77	0.68	0.71	0.71	5.20	4.50	4.70	4.70	0.00	0.00	0.20	4.44
Ethiopia	1.88	1.84	1.88	1.88	1.77	1.76	1.76	1.76	3.33	3.23	3.30	3.30	0.00	0.00	0.07	2.17
Burkina	1.45	1.45	1.45	1.45	1.24	1.24	1.24	1.24	1.80	1.80	1.80	1.80	0.00	0.00	0.00	0.00
Tanzania, United	0.89	0.90	0.90	0.90	0.96	1.00	1.00	1.00	0.85	0.90	0.90	0.90	0.00	0.00	0.00	0.00
Niger	1.50	1.50	1.50	1.50	0.53	0.53	0.53	0.53	0.80	0.80	0.80	0.80	0.00	0.00	0.00	0.00
Uganda	0.31	0.31	0.31	0.31	1.58	1.58	1.58	1.58	0.49	0.49	0.49	0.49	0.00	0.00	0.00	0.00
Mozambique	0.50	0.50	0.50	0.50	0.70	0.70	0.70	0.70	0.35	0.35	0.35	0.35	0.00	0.00	0.00	0.00
Ghana	0.34	0.34	0.34	0.34	1.18	1.03	1.03	1.03	0.40	0.35	0.35	0.35	0.00	0.00	0.00	0.00
South Africa, Republic	0.07	0.09	0.09	0.09	2.51	2.89	2.56	2.56	0.18	0.26	0.23	0.23	0.00	0.00	-0.03	-11.54
<b>South Asia</b>																
India	8.51	8.40	7.50	7.50	0.84	0.93	0.87	0.87	7.15	7.78	6.50	6.50	0.00	0.00	-1.28	-16.45
Pakistan	0.26	0.25	0.24	0.24	0.61	0.60	0.60	0.60	0.16	0.15	0.15	0.15	0.00	0.00	-0.01	-3.97
<b>Mexico</b>	1.60	1.86	1.75	1.75	3.64	3.29	3.54	3.54	5.81	6.10	6.20	6.20	0.00	0.00	0.10	1.64
<b>China, Peoples</b>	0.57	0.55	0.50	0.50	3.53	3.45	3.60	4.00	2.00	1.90	1.80	2.00	0.20	11.11	0.10	5.26
<b>Australia</b>	0.61	0.80	0.80	0.80	2.09	3.36	2.50	2.50	1.28	2.69	2.00	2.00	0.00	0.00	-0.69	-25.68
<b>Egypt</b>	0.16	0.16	0.16	0.16	5.63	5.63	5.63	5.63	0.90	0.90	0.90	0.90	0.00	0.00	0.00	0.00
<b>EU-27</b>																
France	0.06	0.05	0.05	0.05	5.56	5.88	4.81	4.81	0.31	0.29	0.26	0.26	0.00	0.00	-0.03	-11.56
Italy	0.04	0.03	0.03	0.03	5.67	5.74	5.83	5.83	0.22	0.20	0.18	0.18	0.00	0.00	-0.02	-10.26
<b>Others</b>	4.54	4.51	4.92	4.93	1.80	1.74	1.95	1.96	8.19	7.86	9.61	9.65	0.05	0.47	1.80	22.86

World and Selected Countries and Regions

9/12/2008 9:33:26 AM

**Table 09 Rice Area, Yield, and Production**  
**1000 Metric Tons**

Country / Region	Area (Million hectares)				Yield (Metric tons per hectare)				Production (Million metric tons)				Change in Production			
	Prel. 2006/07	2007/08	2008/09 Aug	Proj. Sep	Prel. 2006/07	2007/08	2008/09 Aug	Proj. Sep	Prel. 2006/07	2007/08	2008/09 Aug	Proj. Sep	From last month MMT	Percent	From last year MMT	Percent
<b>World</b>	153.74	154.49	155.18	155.89	4.07	4.15	4.14	4.13	419.85	429.47	430.75	431.98	1.23	0.29	2.51	0.58
<b>United States</b>	1.14	1.11	1.17	1.18	7.69	8.05	7.98	7.93	6.24	6.31	6.55	6.62	0.07	0.99	0.30	4.80
<b>Total Foreign</b>	152.60	153.38	154.01	154.70	4.05	4.12	4.11	4.10	413.62	423.16	424.20	425.36	1.17	0.27	2.21	0.52
<b>East Asia</b>																
China, Peoples	29.30	29.60	29.75	29.75	6.20	6.27	6.27	6.27	127.20	129.84	130.55	130.55	0.00	0.00	0.71	0.55
Japan	1.69	1.67	1.65	1.67	6.34	6.51	6.58	6.58	7.79	7.93	7.90	8.00	0.10	1.27	0.07	0.88
Korea, Republic of	0.96	0.95	0.94	0.94	6.62	6.28	6.45	6.50	4.68	4.41	4.50	4.50	0.00	0.00	0.09	2.09
Korea, Democratic	0.60	0.60	0.59	0.59	4.89	3.94	4.21	4.21	1.90	1.53	1.60	1.60	0.00	0.00	0.07	4.78
<b>South Asia</b>																
India	44.00	44.00	44.50	45.00	3.18	3.29	3.24	3.23	93.35	96.43	96.00	97.00	1.00	1.04	0.57	0.59
Bangladesh	11.20	11.00	11.30	11.30	3.88	3.90	3.90	3.90	29.00	28.60	29.40	29.40	0.00	0.00	0.80	2.80
Pakistan	2.58	2.55	2.60	2.60	3.03	3.24	3.23	3.35	5.20	5.50	5.60	5.80	0.20	3.57	0.30	5.45
<b>Southeast Asia</b>																
Indonesia	11.90	11.90	11.90	11.90	4.60	4.63	4.72	4.72	35.30	35.50	36.25	36.25	0.00	0.00	0.75	2.11
Vietnam	7.20	7.36	7.36	7.36	4.82	4.97	4.88	4.88	22.92	24.13	23.70	23.70	0.00	0.00	-0.43	-1.76
Thailand	10.27	10.60	10.50	10.70	2.69	2.76	2.71	2.76	18.25	19.30	18.80	19.50	0.70	3.72	0.20	1.04
Burma, Union of	7.00	7.09	6.39	6.39	2.61	2.61	2.54	2.54	10.60	10.73	9.40	9.40	0.00	0.00	-1.33	-12.40
Philippines	4.19	4.25	4.30	4.30	3.70	3.76	3.94	3.77	9.78	10.08	11.00	10.20	-0.80	-7.27	0.12	1.19
Cambodia	2.52	2.53	2.60	2.60	2.49	2.56	2.58	2.58	3.95	4.08	4.23	4.23	0.00	0.00	0.15	3.68
Laos	0.76	0.76	0.78	0.78	3.50	3.49	3.53	3.53	1.60	1.59	1.65	1.65	0.00	0.00	0.06	3.77
Malaysia	0.65	0.66	0.68	0.68	3.30	3.45	3.46	3.46	1.39	1.48	1.52	1.52	0.00	0.00	0.04	2.70
<b>South America</b>																
Brazil	2.97	2.89	3.10	3.10	3.81	4.25	4.03	4.03	7.70	8.35	8.50	8.50	0.00	0.00	0.15	1.76
Peru	0.35	0.35	0.35	0.35	6.63	7.04	7.04	7.04	1.60	1.70	1.70	1.70	0.00	0.00	0.00	0.00
<b>Sub-Saharan Africa</b>																
Nigeria	2.05	2.20	2.30	2.30	2.36	2.27	2.25	2.25	2.90	3.00	3.10	3.10	0.00	0.00	0.10	3.33
Madagascar	1.35	1.35	1.33	1.33	2.59	2.67	2.72	2.72	2.24	2.30	2.30	2.30	0.00	0.00	0.00	0.00
<b>EU-27</b>																
Italy	0.23	0.23	0.23	0.23	6.28	6.28	6.28	6.28	0.87	0.87	0.87	0.87	0.00	0.00	0.00	0.00
Spain	0.11	0.10	0.10	0.10	7.04	7.23	6.83	6.83	0.52	0.52	0.45	0.45	0.00	0.00	-0.06	-12.02
<b>Egypt</b>	0.67	0.67	0.67	0.67	10.08	10.07	10.04	10.04	4.38	4.39	4.39	4.39	0.00	0.00	0.00	0.05
<b>Iran</b>	0.62	0.63	0.58	0.58	4.84	5.24	3.95	3.95	1.98	2.18	1.50	1.50	0.00	0.00	-0.68	-31.13
<b>Others</b>	9.46	9.45	9.55	9.52	3.01	3.05	3.11	3.11	18.54	18.74	19.29	19.25	-0.04	-0.18	0.52	2.76

World and Selected Countries and Regions  
Yield is on a rough basis, before the milling process  
Production is on a milled basis, after the milling process

9/12/2008 9:33:26 AM

**Table 10 5-Major Oilseeds; Area, Yield, and Production 1/  
1000 Metric Tons**

Country / Region	Area (Million hectares)				Yield (Metric tons per hectare)				Production (Million metric tons)				Change in Production			
	Prel. 2006/07	2007/08	2008/09 Aug	Proj. Sep	Prel. 2006/07	2007/08	2008/09 Aug	Proj. Sep	Prel. 2006/07	2007/08	2008/09 Aug	Proj. Sep	From last month MMT	Percent	From last year MMT	Percent
<b>World</b>	198.41	193.58	203.80	204.07	1.95	1.92	1.96	1.96	387.89	371.90	398.43	400.15	1.72	0.43	28.24	7.59
<b>United States</b>	36.96	31.44	34.66	34.69	2.61	2.54	2.57	2.54	96.61	80.00	89.08	88.17	-0.90	-1.01	8.17	10.21
<b>Total Foreign</b>	161.45	162.15	169.14	169.39	1.80	1.80	1.83	1.84	291.28	291.90	309.35	311.97	2.62	0.85	20.07	6.88
<b>South America</b>																
Brazil	21.99	22.58	23.17	23.17	2.82	2.84	2.82	2.82	61.98	64.01	65.23	65.23	0.00	0.00	1.22	1.91
Argentina	19.30	19.48	21.15	21.47	2.75	2.67	2.62	2.63	53.16	51.98	55.40	56.43	1.03	1.86	4.45	8.56
Paraguay	2.75	2.98	3.15	3.15	2.41	2.44	2.46	2.46	6.61	7.28	7.74	7.74	0.00	0.00	0.46	6.32
Bolivia	1.01	0.87	0.86	0.86	1.80	1.36	2.07	2.07	1.82	1.18	1.78	1.78	0.00	0.00	0.60	50.85
Uruguay	0.41	0.45	0.61	0.61	2.11	2.00	2.00	2.00	0.86	0.90	1.22	1.22	0.00	0.00	0.31	34.70
<b>China, Peoples</b>	25.75	25.20	26.15	26.15	2.11	2.09	2.13	2.16	54.31	52.64	55.81	56.51	0.70	1.25	3.87	7.35
<b>South Asia</b>																
India	31.98	32.30	33.40	33.50	0.92	1.03	0.99	0.99	29.28	33.17	33.10	33.20	0.10	0.30	0.03	0.10
Pakistan	4.01	4.00	3.88	3.73	1.31	1.14	1.32	1.32	5.25	4.57	5.11	4.91	-0.20	-3.92	0.34	7.37
<b>Former Soviet Union</b>																
Russian Federation	7.16	6.24	7.20	7.20	1.13	1.11	1.13	1.13	8.08	6.93	8.10	8.10	0.00	0.00	1.17	16.82
Ukraine	5.00	4.93	6.05	6.05	1.36	1.21	1.47	1.47	6.79	5.95	8.90	8.90	0.00	0.00	2.95	49.58
Uzbekistan, Republic	1.43	1.45	1.42	1.42	1.61	1.66	1.62	1.62	2.30	2.40	2.30	2.30	0.00	0.00	-0.10	-4.17
<b>Canada</b>	6.52	7.48	7.57	7.60	1.94	1.65	1.71	1.80	12.61	12.35	12.96	13.64	0.69	5.29	1.29	10.46
<b>EU-27</b>																
France	2.10	2.16	2.07	2.11	2.69	2.78	2.99	3.04	5.63	6.02	6.18	6.43	0.25	4.11	0.41	6.86
Germany	1.46	1.57	1.45	1.40	3.70	3.43	3.60	3.71	5.40	5.37	5.21	5.19	-0.02	-0.40	-0.19	-3.44
United Kingdom	0.58	0.68	0.65	0.65	3.29	3.10	3.08	3.08	1.89	2.11	2.00	2.00	0.00	0.00	-0.11	-5.12
Romania	1.34	1.25	1.28	1.28	1.52	0.82	1.69	1.57	2.05	1.02	2.16	2.01	-0.16	-7.18	0.98	96.18
Czech Republic	0.35	0.39	0.39	0.36	2.86	2.96	2.99	2.95	1.00	1.15	1.17	1.07	-0.09	-8.07	-0.08	-6.71
Hungary	0.71	0.76	0.84	0.84	2.25	2.07	2.29	2.29	1.60	1.58	1.91	1.91	0.00	0.00	0.33	21.15
Poland	0.63	0.80	0.76	0.76	2.63	2.66	2.66	2.66	1.66	2.13	2.01	2.01	0.00	0.00	-0.12	-5.77
Italy	0.33	0.26	0.23	0.24	2.64	2.67	2.74	2.71	0.86	0.70	0.63	0.65	0.02	3.20	-0.06	-8.12
<b>Australia</b>	1.26	1.23	1.44	1.44	0.85	1.14	1.47	1.47	1.08	1.41	2.12	2.12	0.00	0.00	0.71	50.75
<b>Turkey</b>	1.16	1.05	0.99	0.99	1.95	1.85	1.88	1.88	2.26	1.95	1.86	1.86	0.00	0.00	-0.09	-4.62
<b>Sub-Saharan Africa</b>																
Nigeria	2.05	2.08	2.08	2.08	1.04	1.05	1.05	1.05	2.13	2.19	2.19	2.19	0.00	0.00	0.00	0.00
South Africa, Republic	0.55	0.80	0.87	0.87	1.11	1.66	1.57	1.52	0.62	1.33	1.36	1.31	-0.05	-3.31	-0.02	-1.35
<b>Southeast Asia</b>																
Indonesia	1.38	1.33	1.38	1.38	1.47	1.46	1.50	1.50	2.03	1.94	2.06	2.06	0.00	0.00	0.12	6.12
<b>Others</b>	20.26	19.82	20.13	20.10	0.99	0.99	1.04	1.05	20.02	19.63	20.86	21.20	0.34	1.65	1.57	8.01

World and Selected Countries and Regions  
1/ (soybeans, sunflowerseed, rapeseed, cottonseed, and peanuts)

9/12/2008 9:33:34 AM

**Table 11 Soybean Area, Yield, and Production**  
**1000 Metric Tons**

Country / Region	Area (Million hectares)				Yield (Metric tons per hectare)				Production (Million metric tons)				Change in Production			
	Prel. 2006/07	2007/08	2008/09 Aug	Proj. Sep	Prel. 2006/07	2007/08	2008/09 Aug	Proj. Sep	Prel. 2006/07	2007/08	2008/09 Aug	Proj. Sep	From last month MMT	Percent	From last year MMT	Percent
<b>World</b>	94.11	90.06	97.95	98.36	2.51	2.42	2.42	2.42	236.56	218.22	237.36	237.99	0.64	0.27	19.77	9.06
<b>United States</b>	30.19	25.42	29.68	29.68	2.87	2.77	2.73	2.69	86.77	70.36	80.90	79.85	-1.05	-1.30	9.49	13.49
<b>Total Foreign</b>	63.92	64.64	68.27	68.68	2.34	2.29	2.29	2.30	149.79	147.87	156.46	158.15	1.69	1.08	10.28	6.95
<b>South America</b>																
Brazil	20.70	21.30	22.00	22.00	2.85	2.86	2.84	2.84	59.00	61.00	62.50	62.50	0.00	0.00	1.50	2.46
Argentina	16.30	16.37	17.70	18.00	2.99	2.84	2.80	2.81	48.80	46.50	49.50	50.50	1.00	2.02	4.00	8.60
Paraguay	2.40	2.60	2.75	2.75	2.58	2.62	2.62	2.62	6.20	6.80	7.20	7.20	0.00	0.00	0.40	5.88
Bolivia	0.85	0.73	0.72	0.72	1.94	1.44	2.29	2.29	1.65	1.05	1.65	1.65	0.00	0.00	0.60	57.14
Uruguay	0.37	0.42	0.55	0.55	2.24	2.00	2.00	2.00	0.82	0.83	1.10	1.10	0.00	0.00	0.27	32.53
<b>East Asia</b>																
China, Peoples	9.10	8.70	9.40	9.40	1.67	1.55	1.70	1.76	15.20	13.50	16.00	16.50	0.50	3.13	3.00	22.22
Korea, Republic of	0.09	0.08	0.09	0.09	1.73	1.50	1.59	1.59	0.16	0.11	0.14	0.14	0.00	0.00	0.02	18.42
Korea, Democratic	0.14	0.14	0.14	0.14	1.19	1.19	1.19	1.19	0.16	0.16	0.16	0.16	0.00	0.00	0.00	0.00
Japan	0.14	0.14	0.14	0.14	1.58	1.63	1.63	1.63	0.23	0.23	0.23	0.23	0.00	0.00	0.00	0.00
<b>India</b>	8.12	8.80	9.50	9.60	0.95	1.06	0.96	0.96	7.69	9.30	9.10	9.20	0.10	1.10	-0.10	-1.08
<b>Canada</b>	1.20	1.17	1.21	1.21	2.88	2.31	2.53	2.62	3.46	2.70	3.06	3.17	0.11	3.59	0.47	17.41
<b>Former Soviet Union</b>																
Ukraine	0.71	0.63	0.55	0.55	1.25	1.03	1.27	1.27	0.89	0.65	0.70	0.70	0.00	0.00	0.05	7.69
Russian Federation	0.82	0.71	0.73	0.73	0.99	0.92	0.97	0.97	0.81	0.65	0.70	0.70	0.00	0.00	0.05	7.36
<b>Southeast Asia</b>																
Indonesia	0.62	0.60	0.62	0.62	1.31	1.30	1.29	1.29	0.82	0.78	0.80	0.80	0.00	0.00	0.02	2.56
Vietnam	0.21	0.28	0.28	0.28	1.47	1.46	1.46	1.46	0.31	0.41	0.41	0.41	0.00	0.00	0.00	0.00
Thailand	0.15	0.14	0.12	0.12	1.45	1.50	1.50	1.50	0.21	0.21	0.18	0.18	0.00	0.00	-0.03	-14.29
Burma, Union of	0.15	0.15	0.15	0.15	1.17	1.17	1.17	1.17	0.18	0.18	0.18	0.18	0.00	0.00	0.00	0.00
<b>EU-27</b>																
Italy	0.18	0.13	0.10	0.11	3.10	3.14	3.20	3.09	0.55	0.41	0.32	0.34	0.02	6.25	-0.07	-16.67
France	0.05	0.03	0.03	0.03	2.73	2.75	2.67	2.33	0.12	0.09	0.08	0.07	-0.01	-12.50	-0.02	-20.45
<b>Sub-Saharan Africa</b>																
South Africa, Republic	0.18	0.17	0.20	0.20	1.13	1.87	1.75	1.75	0.21	0.31	0.35	0.35	0.00	0.00	0.04	13.64
Nigeria	0.43	0.44	0.44	0.44	1.02	1.02	1.02	1.02	0.44	0.45	0.45	0.45	0.00	0.00	0.00	0.00
Uganda	0.15	0.15	0.15	0.15	1.10	1.10	1.10	1.10	0.17	0.17	0.17	0.17	0.00	0.00	0.00	0.00
<b>Serbia</b>	0.17	0.15	0.13	0.13	2.12	2.20	2.55	2.55	0.35	0.33	0.34	0.34	0.00	0.00	0.01	2.12
<b>Mexico</b>	0.05	0.05	0.07	0.07	1.48	1.43	1.54	1.54	0.08	0.08	0.10	0.10	0.00	0.00	0.02	31.58
<b>Iran</b>	0.10	0.10	0.11	0.11	2.40	2.40	2.36	2.36	0.24	0.24	0.26	0.26	0.00	0.00	0.02	8.33
<b>Others</b>	0.57	0.47	0.41	0.41	1.90	1.58	1.93	1.87	1.08	0.74	0.80	0.77	-0.03	-3.76	0.02	3.23

World and Selected Countries and Regions

9/12/2008 9:33:21 AM

**Table 12 Cottonseed Area, Yield, and Production**  
**1000 Metric Tons**

Country / Region	Area (Million hectares)				Yield (Metric tons per hectare)				Production (Million metric tons)				Change in Production			
	Prel. 2006/07	2007/08	2008/09 Aug	Proj. Sep	Prel. 2006/07	2007/08	2008/09 Aug	Proj. Sep	Prel. 2006/07	2007/08	2008/09 Aug	Proj. Sep	From last month MMT	Percent	From last year MMT	Percent
<b>World</b>	33.79	32.66	30.81	30.55	1.36	1.41	1.41	1.42	45.83	45.99	43.51	43.28	-0.23	-0.53	-2.71	-5.89
<b>United States</b>	5.15	4.25	3.18	3.17	1.29	1.41	1.34	1.35	6.67	5.98	4.25	4.28	0.03	0.64	-1.70	-28.46
<b>Total Foreign</b>	28.64	28.42	27.63	27.38	1.37	1.41	1.42	1.42	39.16	40.01	39.26	39.00	-0.26	-0.66	-1.01	-2.52
<b>China, Peoples</b>	6.00	6.20	6.00	6.00	2.32	2.34	2.32	2.32	13.91	14.50	13.91	13.91	0.00	0.00	-0.59	-4.07
<b>South Asia</b>																
India	9.17	9.50	9.20	9.20	1.00	1.12	1.13	1.13	9.13	10.60	10.40	10.40	0.00	0.00	-0.20	-1.89
Pakistan	3.25	3.25	3.05	2.90	1.33	1.14	1.34	1.34	4.32	3.70	4.10	3.90	-0.20	-4.88	0.20	5.41
<b>Former Soviet Union</b>																
Uzbekistan, Republic	1.43	1.45	1.42	1.42	1.61	1.66	1.62	1.62	2.30	2.40	2.30	2.30	0.00	0.00	-0.10	-4.17
Turkmenistan	0.60	0.60	0.60	0.60	0.78	0.85	0.83	0.83	0.47	0.51	0.50	0.50	0.00	0.00	-0.01	-1.96
Tajikistan, Republic of	0.26	0.25	0.24	0.24	1.00	0.90	0.85	0.85	0.26	0.23	0.21	0.21	0.00	0.00	-0.02	-8.89
Kazakhstan, Republic	0.20	0.20	0.16	0.16	1.26	1.23	1.25	1.25	0.25	0.25	0.20	0.20	0.00	0.00	-0.05	-18.37
<b>South America</b>																
Brazil	1.09	1.09	0.98	0.98	2.38	2.44	2.43	2.43	2.61	2.66	2.38	2.38	0.00	0.00	-0.28	-10.48
Argentina	0.40	0.31	0.38	0.40	0.71	0.76	0.68	0.73	0.29	0.24	0.26	0.29	0.03	12.40	0.05	22.36
<b>Middle East</b>																
Turkey	0.64	0.55	0.45	0.45	2.05	2.09	2.00	2.00	1.31	1.15	0.90	0.90	0.00	0.00	-0.25	-21.74
Syria	0.21	0.20	0.18	0.18	2.10	2.76	2.78	2.78	0.45	0.55	0.50	0.50	0.00	0.00	-0.05	-9.26
Iran	0.12	0.12	0.12	0.12	1.02	0.98	0.98	0.98	0.12	0.12	0.12	0.12	0.00	0.00	0.00	0.00
<b>Australia</b>	0.15	0.08	0.15	0.15	2.90	2.55	2.47	2.47	0.42	0.19	0.37	0.37	0.00	0.00	0.18	93.72
<b>EU-27</b>																
Greece	0.33	0.32	0.25	0.25	1.37	1.36	1.42	1.42	0.45	0.43	0.36	0.36	0.00	0.00	-0.07	-17.02
Spain	0.05	0.05	0.06	0.05	1.27	1.06	0.89	0.86	0.07	0.06	0.05	0.04	-0.01	-12.24	-0.01	-24.56
<b>Sub-Saharan Africa</b>																
Burkina	0.70	0.40	0.50	0.50	0.51	0.47	0.52	0.52	0.36	0.19	0.26	0.26	0.00	0.00	0.08	40.86
Mali	0.46	0.28	0.29	0.25	0.49	0.45	0.49	0.52	0.22	0.13	0.14	0.13	-0.01	-8.45	0.00	2.36
Cameroon	0.20	0.14	0.16	0.16	0.91	0.80	0.94	0.94	0.18	0.11	0.15	0.15	0.00	0.00	0.04	33.93
Sudan	0.16	0.06	0.16	0.08	0.72	0.93	0.96	1.03	0.12	0.06	0.15	0.08	-0.07	-46.75	0.03	46.43
Zimbabwe	0.35	0.40	0.40	0.40	0.54	0.52	0.55	0.55	0.19	0.21	0.22	0.22	0.00	0.00	0.01	4.31
Nigeria	0.38	0.40	0.40	0.40	0.46	0.49	0.49	0.49	0.17	0.19	0.19	0.19	0.00	0.00	0.00	0.00
Benin	0.23	0.23	0.26	0.26	0.68	0.71	0.73	0.73	0.16	0.17	0.19	0.19	0.00	0.00	0.03	15.15
Uganda	0.27	0.27	0.27	0.27	0.31	0.19	0.32	0.32	0.08	0.05	0.09	0.09	0.00	0.00	0.04	67.31
<b>Egypt</b>	0.25	0.25	0.14	0.14	1.28	1.36	1.50	1.50	0.32	0.34	0.20	0.20	0.00	0.00	-0.14	-40.59
<b>Mexico</b>	0.12	0.12	0.12	0.12	1.89	1.85	1.85	1.85	0.22	0.23	0.23	0.23	0.00	0.00	0.00	0.00
<b>Burma, Union of</b>	0.30	0.30	0.30	0.30	0.53	0.53	0.53	0.53	0.16	0.16	0.16	0.16	0.00	0.00	0.00	0.00
<b>Others</b>	1.34	1.39	1.40	1.40	0.49	0.43	0.51	0.51	0.65	0.60	0.72	0.72	0.00	0.00	0.12	19.57

World and Selected Countries and Regions

9/12/2008 9:33:23 AM

**Table 13 Peanut Area, Yield, and Production**  
**1000 Metric Tons**

Country / Region	Area (Million hectares)				Yield (Metric tons per hectare)				Production (Million metric tons)				Change in Production			
	Prel. 2006/07	2007/08	2008/09 Aug	Proj. Sep	Prel. 2006/07	2007/08	2008/09 Aug	Proj. Sep	Prel. 2006/07	2007/08	2008/09 Aug	Proj. Sep	From last month MMT	Percent	From last year MMT	Percent
<b>World</b>	20.27	20.83	20.96	20.99	1.51	1.55	1.57	1.59	30.53	32.27	32.97	33.29	0.32	0.98	1.03	3.18
<b>United States</b>	0.49	0.48	0.58	0.61	3.21	3.51	3.53	3.57	1.57	1.70	2.04	2.16	0.12	5.99	0.46	27.28
<b>Total Foreign</b>	19.78	20.34	20.39	20.39	1.46	1.50	1.52	1.53	28.95	30.57	30.93	31.13	0.20	0.65	0.56	1.85
<b>China, Peoples</b>	3.80	3.80	3.90	3.90	3.35	3.43	3.44	3.49	12.74	13.02	13.40	13.60	0.20	1.49	0.58	4.49
<b>South Asia</b>																
India	5.91	6.40	6.30	6.30	0.91	1.03	1.02	1.02	5.39	6.60	6.40	6.40	0.00	0.00	-0.20	-3.03
Pakistan	0.11	0.11	0.11	0.11	0.90	0.90	0.90	0.90	0.10	0.10	0.10	0.10	0.00	0.00	0.00	0.00
<b>Sub-Saharan Africa</b>																
Nigeria	1.24	1.25	1.25	1.25	1.23	1.25	1.25	1.25	1.52	1.55	1.55	1.55	0.00	0.00	0.00	0.00
Senegal	0.59	0.65	0.65	0.65	0.77	0.65	0.72	0.72	0.46	0.42	0.47	0.47	0.00	0.00	0.05	11.90
Chad	0.48	0.50	0.50	0.50	0.94	0.94	0.94	0.94	0.45	0.47	0.47	0.47	0.00	0.00	0.00	0.00
Ghana	0.47	0.47	0.47	0.47	0.94	0.94	0.94	0.94	0.44	0.44	0.44	0.44	0.00	0.00	0.00	0.00
Sudan	1.00	1.00	1.00	1.00	0.85	0.85	0.85	0.85	0.85	0.85	0.85	0.85	0.00	0.00	0.00	0.00
Congo, Democratic	0.48	0.48	0.48	0.48	0.78	0.78	0.78	0.78	0.37	0.37	0.37	0.37	0.00	0.00	0.00	0.00
Burkina	0.35	0.35	0.35	0.35	0.99	1.01	1.01	1.01	0.34	0.35	0.35	0.35	0.00	0.00	0.00	0.00
Guinea	0.21	0.21	0.21	0.21	1.24	1.24	1.24	1.24	0.26	0.26	0.26	0.26	0.00	0.00	0.00	0.00
Cameroon	0.31	0.31	0.31	0.31	0.76	0.77	0.77	0.77	0.24	0.24	0.24	0.24	0.00	0.00	0.00	0.00
Mali	0.25	0.25	0.25	0.25	1.10	1.10	1.10	1.10	0.28	0.28	0.28	0.28	0.00	0.00	0.00	0.00
Malawi	0.22	0.22	0.22	0.22	0.93	1.20	1.20	1.20	0.20	0.27	0.27	0.27	0.00	0.00	0.00	0.00
Cote d'Ivoire	0.15	0.15	0.15	0.15	1.00	1.00	1.00	1.00	0.15	0.15	0.15	0.15	0.00	0.00	0.00	0.00
Uganda	0.21	0.21	0.21	0.21	0.70	0.70	0.70	0.70	0.15	0.15	0.15	0.15	0.00	0.00	0.00	0.00
Central African	0.13	0.13	0.13	0.13	1.12	1.12	1.12	1.12	0.14	0.14	0.14	0.14	0.00	0.00	0.00	0.00
Benin	0.16	0.16	0.16	0.16	0.81	0.81	0.81	0.81	0.13	0.13	0.13	0.13	0.00	0.00	0.00	0.00
Mozambique	0.29	0.29	0.29	0.29	0.38	0.38	0.38	0.38	0.11	0.11	0.11	0.11	0.00	0.00	0.00	0.00
Niger	0.26	0.26	0.26	0.26	0.42	0.42	0.42	0.42	0.11	0.11	0.11	0.11	0.00	0.00	0.00	0.00
South Africa, Republic	0.04	0.06	0.05	0.05	1.93	2.09	2.00	2.00	0.08	0.12	0.10	0.10	0.00	0.00	-0.02	-13.04
<b>Southeast Asia</b>																
Indonesia	0.75	0.72	0.75	0.75	1.60	1.60	1.67	1.67	1.20	1.15	1.25	1.25	0.00	0.00	0.10	8.70
Burma, Union of	0.80	0.80	0.80	0.80	1.10	1.10	1.10	1.10	0.88	0.88	0.88	0.88	0.00	0.00	0.00	0.00
Vietnam	0.26	0.26	0.26	0.26	1.77	1.77	1.77	1.77	0.46	0.46	0.46	0.46	0.00	0.00	0.00	0.00
Thailand	0.07	0.07	0.07	0.07	1.77	1.77	1.77	1.77	0.12	0.12	0.12	0.12	0.00	0.00	0.00	0.00
<b>South America</b>																
Argentina	0.20	0.22	0.23	0.23	2.88	2.77	2.80	2.80	0.58	0.62	0.64	0.64	0.00	0.00	0.03	4.72
Brazil	0.12	0.12	0.12	0.12	2.17	2.17	2.17	2.17	0.25	0.25	0.25	0.25	0.00	0.00	0.00	0.00
<b>Egypt</b>	0.06	0.06	0.06	0.06	3.17	3.17	3.17	3.17	0.19	0.19	0.19	0.19	0.00	0.00	0.00	0.00
<b>Mexico</b>	0.05	0.04	0.05	0.05	1.56	1.69	1.56	1.56	0.07	0.07	0.07	0.07	0.00	0.00	0.00	6.06
<b>Others</b>	0.84	0.83	0.84	0.84	0.87	0.89	0.90	0.90	0.73	0.74	0.75	0.75	0.00	0.00	0.01	1.63

World and Selected Countries and Regions

9/12/2008 9:33:21 AM

**Table 14 Sunflowerseed Area, Yield, and Production**  
**1000 Metric Tons**

Country / Region	Area (Million hectares)				Yield (Metric tons per hectare)				Production (Million metric tons)				Change in Production			
	Prel. 2006/07	2008/09 2007/08	2008/09 Aug	Proj. 24.57 Sep	Prel. 2006/07	2008/09 2007/08	2008/09 Aug	Proj. 24.57 Sep	Prel. 2006/07	2008/09 2007/08	2008/09 Aug	Proj. 32.22 Sep	From last month MMT	Percent	From last year MMT	Percent
<b>World</b>	23.70	21.83	24.55	24.57	1.26	1.25	1.32	1.31	29.81	27.20	32.47	32.22	-0.25	-0.78	5.02	18.46
<b>United States</b>	0.72	0.81	0.84	0.84	1.36	1.61	1.52	1.52	0.97	1.31	1.27	1.27	0.00	0.00	-0.05	-3.44
<b>Total Foreign</b>	22.99	21.02	23.71	23.73	1.25	1.23	1.32	1.30	28.84	25.89	31.21	30.95	-0.25	-0.81	5.07	19.57
<b>Former Soviet Union</b>																
Russian Federation	5.90	5.00	5.90	5.90	1.14	1.13	1.14	1.14	6.75	5.65	6.70	6.70	0.00	0.00	1.05	18.58
Ukraine	3.90	3.40	4.10	4.10	1.36	1.24	1.32	1.32	5.30	4.20	5.40	5.40	0.00	0.00	1.20	28.57
Moldova, Republic of	0.25	0.24	0.23	0.23	1.52	0.67	1.56	1.56	0.38	0.16	0.35	0.35	0.00	0.00	0.19	118.75
Kazakhstan, Republic	0.43	0.35	0.43	0.43	0.63	0.64	0.62	0.62	0.27	0.23	0.27	0.27	0.00	0.00	0.04	17.78
<b>South America</b>																
Argentina	2.40	2.58	2.84	2.84	1.46	1.80	1.76	1.76	3.50	4.63	5.00	5.00	0.00	0.00	0.37	7.99
Uruguay	0.04	0.04	0.06	0.06	1.02	2.00	1.98	1.98	0.04	0.07	0.12	0.12	0.00	0.00	0.04	59.72
Bolivia	0.16	0.14	0.14	0.14	1.06	0.93	0.93	0.93	0.17	0.13	0.13	0.13	0.00	0.00	0.00	0.00
<b>China, Peoples</b>	0.85	0.80	0.85	0.85	1.76	1.56	1.76	1.76	1.50	1.25	1.50	1.50	0.00	0.00	0.25	20.00
<b>EU-27</b>																
France	0.64	0.52	0.55	0.56	2.16	2.52	2.45	2.48	1.39	1.30	1.35	1.39	0.04	2.96	0.09	6.92
Hungary	0.54	0.51	0.56	0.56	2.20	2.04	2.14	2.14	1.18	1.04	1.20	1.20	0.00	0.00	0.16	15.05
Spain	0.63	0.60	0.68	0.69	0.96	1.17	1.18	1.28	0.61	0.70	0.80	0.89	0.09	10.63	0.18	25.89
Italy	0.15	0.13	0.12	0.12	2.12	2.21	2.43	2.43	0.31	0.28	0.28	0.28	0.00	0.00	0.00	0.36
Slovakia	0.11	0.07	0.07	0.07	2.12	2.05	2.08	2.08	0.23	0.13	0.14	0.14	0.00	0.00	0.00	1.50
<b>South Asia</b>																
India	2.15	1.90	2.20	2.20	0.60	0.64	0.64	0.64	1.28	1.22	1.40	1.40	0.00	0.00	0.18	15.13
Pakistan	0.41	0.38	0.45	0.45	1.28	1.52	1.52	1.52	0.52	0.58	0.69	0.69	0.00	0.00	0.10	17.50
<b>Turkey</b>	0.48	0.47	0.50	0.50	1.77	1.49	1.70	1.70	0.85	0.70	0.85	0.85	0.00	0.00	0.15	21.43
<b>South Africa,</b>	0.32	0.57	0.60	0.60	0.98	1.57	1.48	1.40	0.31	0.89	0.89	0.84	-0.05	-5.08	-0.05	-5.08
<b>Burma, Union of</b>	0.97	0.97	0.97	0.97	0.36	0.36	0.36	0.36	0.35	0.35	0.35	0.35	0.00	0.00	0.00	0.00
<b>Serbia</b>	0.21	0.13	0.19	0.18	1.90	2.00	2.11	2.00	0.40	0.26	0.40	0.36	-0.04	-10.00	0.10	38.46
<b>Canada</b>	0.08	0.08	0.06	0.06	2.00	1.58	1.59	1.59	0.15	0.12	0.10	0.10	0.00	0.00	-0.03	-20.49
<b>Australia</b>	0.02	0.05	0.05	0.05	1.06	1.54	1.11	1.11	0.02	0.07	0.05	0.05	0.00	0.00	-0.02	-32.43
<b>Others</b>	2.38	2.12	2.19	2.19	1.41	0.91	1.49	1.35	3.34	1.92	3.27	2.97	-0.29	-9.00	1.05	54.50

World and Selected Countries and Regions

9/12/2008 9:33:22 AM



**Table 15 Rapeseed Area, Yield, and Production**  
1000 Metric Tons

Country / Region	Area (Million hectares)				Yield (Metric tons per hectare)				Production (Million metric tons)				Change in Production			
	Prel. 2006/07	2008/09 2007/08	2008/09 Aug	Proj. 2008/09 Sep	Prel. 2006/07	2008/09 2007/08	2008/09 Aug	Proj. 2008/09 Sep	Prel. 2006/07	2008/09 2007/08	2008/09 Aug	Proj. 2008/09 Sep	From last month MMT	Percent	From last year MMT	Percent
<b>World</b>	26.54	28.20	29.53	29.60	1.70	1.71	1.77	1.80	45.16	48.23	52.12	53.37	1.24	2.38	5.13	10.64
<b>United States</b>	0.41	0.47	0.40	0.40	1.53	1.40	1.57	1.57	0.63	0.66	0.62	0.62	0.00	0.00	-0.04	-5.76
<b>Total Foreign</b>	26.12	27.73	29.13	29.21	1.70	1.72	1.77	1.81	44.53	47.57	51.50	52.74	1.24	2.41	5.17	10.87
<b>EU-27</b>																
Germany	1.43	1.55	1.43	1.37	3.73	3.44	3.61	3.73	5.34	5.32	5.15	5.13	-0.02	-0.45	-0.19	-3.65
France	1.41	1.62	1.49	1.52	2.93	2.87	3.20	3.27	4.12	4.63	4.75	4.97	0.22	4.72	0.34	7.36
United Kingdom	0.58	0.68	0.65	0.65	3.29	3.10	3.08	3.08	1.89	2.11	2.00	2.00	0.00	0.00	-0.11	-5.12
Poland	0.62	0.80	0.75	0.75	2.65	2.67	2.67	2.67	1.65	2.13	2.00	2.00	0.00	0.00	-0.13	-5.88
Czech Republic	0.29	0.36	0.36	0.33	3.01	3.01	3.08	3.03	0.88	1.07	1.10	1.00	-0.10	-9.09	-0.07	-6.54
Denmark	0.13	0.18	0.18	0.18	3.48	3.28	3.39	3.47	0.44	0.58	0.60	0.62	0.02	2.50	0.03	5.85
Hungary	0.14	0.22	0.25	0.25	2.43	2.25	2.60	2.60	0.34	0.49	0.65	0.65	0.00	0.00	0.16	31.58
Romania	0.10	0.34	0.39	0.39	1.68	1.10	1.69	1.87	0.18	0.38	0.65	0.72	0.07	10.77	0.35	92.00
Slovakia	0.12	0.15	0.16	0.18	2.11	2.08	2.16	2.22	0.26	0.32	0.35	0.40	0.05	15.27	0.08	24.61
Sweden	0.09	0.09	0.10	0.10	2.45	2.53	2.53	2.49	0.22	0.22	0.24	0.24	0.00	-1.25	0.01	6.28
Lithuania	0.15	0.17	0.20	0.20	1.13	1.90	1.75	1.75	0.17	0.33	0.35	0.35	0.00	0.00	0.02	6.06
Latvia	0.08	0.10	0.10	0.10	1.45	2.14	2.20	2.20	0.12	0.21	0.22	0.22	0.00	0.00	0.01	3.77
Austria	0.04	0.05	0.04	0.06	3.26	3.00	2.84	3.29	0.14	0.14	0.13	0.18	0.06	47.20	0.04	27.78
Finland	0.11	0.09	0.10	0.07	1.38	1.27	1.26	1.38	0.15	0.11	0.12	0.09	-0.03	-25.00	-0.02	-21.05
Estonia	0.06	0.07	0.08	0.08	1.35	1.49	1.50	1.50	0.09	0.11	0.12	0.12	0.00	0.00	0.01	10.09
<b>China, Peoples</b>	6.00	5.70	6.00	6.00	1.83	1.82	1.83	1.83	10.97	10.38	11.00	11.00	0.00	0.00	0.63	6.02
<b>South Asia</b>																
India	6.64	5.70	6.20	6.20	0.87	0.96	0.94	0.94	5.80	5.45	5.80	5.80	0.00	0.00	0.35	6.42
Pakistan	0.25	0.26	0.27	0.27	1.30	0.75	0.83	0.83	0.32	0.19	0.23	0.23	0.00	0.00	0.04	18.42
Bangladesh	0.31	0.30	0.30	0.30	0.76	0.71	0.73	0.73	0.24	0.21	0.22	0.22	0.00	0.00	0.01	4.76
<b>Canada</b>	5.24	6.23	6.30	6.32	1.72	1.53	1.56	1.64	9.00	9.53	9.80	10.38	0.58	5.87	0.85	8.89
<b>Australia</b>	1.05	1.06	1.20	1.20	0.54	1.00	1.33	1.33	0.57	1.07	1.60	1.60	0.00	0.00	0.54	50.23
<b>Former Soviet Union</b>																
Ukraine	0.39	0.90	1.40	1.40	1.54	1.22	2.00	2.00	0.60	1.10	2.80	2.80	0.00	0.00	1.70	154.55
Russian Federation	0.45	0.54	0.58	0.58	1.16	1.18	1.22	1.22	0.52	0.63	0.70	0.70	0.00	0.00	0.07	10.76
Belarus	0.11	0.15	0.15	0.24	1.07	1.67	1.23	2.29	0.12	0.25	0.19	0.55	0.37	197.30	0.30	120.00
<b>Paraguay</b>	0.10	0.10	0.10	0.10	1.50	1.50	1.80	1.80	0.15	0.15	0.18	0.18	0.00	0.00	0.03	20.00
<b>Others</b>	0.23	0.34	0.38	0.38	1.19	1.35	1.50	1.58	0.27	0.46	0.57	0.61	0.04	6.50	0.14	31.17

World and Selected Countries and Regions

9/12/2008 9:33:24 AM

**Table 16 Copra, Palm Kernel, and Palm Oil Production**  
**1000 Metric Tons**

Country / Region	Production (Million metric tons)				Change in Production			
	2006/07	Prel. 2007/08	2008/09 Proj.		From last month		From last year	
			Aug	Sep	MMT	Percent	MMT	Percent
<b>Oilseed, Copra</b>								
Philippines	2.20	2.50	2.60	2.60	0.00	0.00	0.10	0.04
Indonesia	1.44	1.50	1.60	1.60	0.00	0.00	0.10	0.07
India	0.62	0.70	0.74	0.74	0.00	0.00	0.04	0.06
Vietnam	0.24	0.24	0.24	0.24	0.00	0.00	0.00	0.00
Mexico	0.23	0.23	0.23	0.23	0.00	0.00	0.00	0.00
Papua New Guinea	0.11	0.11	0.11	0.11	0.00	0.00	0.00	0.00
Thailand	0.07	0.07	0.07	0.07	0.00	0.00	0.00	0.00
Sri Lanka	0.06	0.07	0.07	0.07	0.00	0.00	0.00	0.00
Mozambique	0.05	0.05	0.05	0.05	0.00	0.00	0.00	0.00
Cote d'Ivoire	0.05	0.05	0.05	0.05	0.00	0.00	0.00	0.00
World	5.26	5.70	5.94	5.94	0.00	0.00	0.24	0.04
<b>Oilseed, Palm Kernel</b>								
Indonesia	4.45	4.79	5.35	5.35	0.00	0.00	0.56	0.12
Malaysia	3.94	4.47	4.47	4.47	0.00	0.00	0.00	0.00
Nigeria	0.67	0.67	0.67	0.67	0.00	0.00	0.00	0.00
Thailand	0.23	0.21	0.28	0.28	0.00	0.00	0.07	0.33
Colombia	0.17	0.17	0.17	0.17	0.00	0.00	0.00	0.00
Papua New Guinea	0.10	0.11	0.12	0.12	0.00	0.00	0.01	0.09
Cote d'Ivoire	0.08	0.08	0.08	0.08	0.00	0.00	0.00	0.00
Cameroon	0.07	0.07	0.07	0.07	0.00	0.00	0.00	0.00
Ecuador	0.06	0.06	0.06	0.06	0.00	0.00	0.00	0.00
Congo, Democratic Rep of	0.06	0.06	0.06	0.06	0.00	0.00	0.00	0.00
World	10.19	11.05	11.69	11.69	0.00	0.00	0.64	0.06
<b>Oil, Palm</b>								
Indonesia	16.60	18.30	19.70	19.70	0.00	0.00	1.40	0.08
Malaysia	15.29	17.70	17.40	17.70	0.30	0.02	0.00	0.00
Thailand	1.17	1.05	1.40	1.40	0.00	0.00	0.35	0.33
Colombia	0.77	0.83	0.83	0.83	0.00	0.00	0.00	0.00
Nigeria	0.81	0.82	0.82	0.82	0.00	0.00	0.00	0.00
Papua New Guinea	0.38	0.40	0.43	0.43	0.00	0.00	0.02	0.05
Ecuador	0.34	0.34	0.34	0.34	0.00	0.00	0.00	0.00
Cote d'Ivoire	0.32	0.32	0.32	0.32	0.00	0.00	0.00	0.00
Costa Rica	0.29	0.29	0.29	0.29	0.00	0.00	0.00	0.00
Congo, Democratic Rep of	0.18	0.18	0.18	0.18	0.00	0.00	0.00	0.00
World	37.34	41.42	42.90	43.20	0.30	0.01	1.78	0.04

World and Selected Countries and Regions

9/12/2008 9:33:24 AM

**Table 17 Cotton Area, Yield, and Production**  
**1000 480 lb. Bales**

Country / Region	Area (Million hectares)				Yield (Kilograms per hectare)				Production (Million 480 lb. bales)				Change in Production			
	2006/07	Prel. 2007/08	2008/09 Aug	Proj. Sep	2006/07	Prel. 2007/08	2008/09 Aug	Proj. Sep	2006/07	Prel. 2007/08	2008/09 Aug	Proj. Sep	From last month MBales	Percent	From last year MBales	Percent
<b>World</b>	34.694	33.247	31.512	31.340	765.000	788.000	775.000	779.000	121.974	120.355	112.161	112.170	0.009	0.008	-8.185	-6.801
<b>United States</b>	5.152	4.245	3.176	3.169	912.000	985.000	944.000	951.000	21.588	19.207	13.767	13.846	0.079	0.574	-5.361	-27.912
<b>Total Foreign</b>	29.542	29.002	28.336	28.171	740.000	759.000	756.000	760.000	100.386	101.148	98.394	98.324	-0.070	-0.071	-2.824	-2.792
<b>China, Peoples</b>	6.000	6.200	6.000	6.000	1,288.0	1,299.0	1,288.0	1,288.0	35.500	37.000	35.500	35.500	0.000	0.000	-1.500	-4.054
<b>South Asia</b>																
India	9.166	9.550	9.100	9.200	518.000	561.000	574.000	580.000	21.800	24.600	24.000	24.500	0.500	2.083	-0.100	-0.407
Pakistan	3.250	3.000	3.050	2.900	663.000	646.000	671.000	676.000	9.900	8.900	9.400	9.000	-0.400	-4.255	0.100	1.124
<b>Former Soviet Union</b>																
Uzbekistan, Republic	1.430	1.450	1.420	1.420	815.000	826.000	782.000	782.000	5.350	5.500	5.100	5.100	0.000	0.000	-0.400	-7.273
Turkmenistan	0.600	0.600	0.600	0.600	435.000	472.000	472.000	472.000	1.200	1.300	1.300	1.300	0.000	0.000	0.000	0.000
Tajikistan, Republic of	0.255	0.250	0.230	0.230	551.000	523.000	497.000	497.000	0.645	0.600	0.525	0.525	0.000	0.000	-0.075	-12.500
Kazakhstan, Republic	0.195	0.200	0.160	0.160	698.000	680.000	633.000	633.000	0.625	0.625	0.465	0.465	0.000	0.000	-0.160	-25.600
<b>Sub-Saharan Africa</b>																
Burkina	0.700	0.400	0.500	0.500	404.000	367.000	414.000	414.000	1.300	0.675	0.950	0.950	0.000	0.000	0.275	40.741
Mali	0.460	0.284	0.290	0.250	375.000	345.000	375.000	401.000	0.792	0.450	0.500	0.460	-0.040	-8.000	0.010	2.222
Zimbabwe	0.350	0.400	0.400	0.400	311.000	299.000	313.000	313.000	0.500	0.550	0.575	0.575	0.000	0.000	0.025	4.545
Benin	0.231	0.234	0.260	0.260	448.000	465.000	482.000	482.000	0.475	0.500	0.575	0.575	0.000	0.000	0.075	15.000
Cote d'Ivoire	0.214	0.200	0.190	0.190	317.000	245.000	286.000	286.000	0.312	0.225	0.250	0.250	0.000	0.000	0.025	11.111
Cameroon	0.200	0.140	0.160	0.160	397.000	350.000	408.000	408.000	0.365	0.225	0.300	0.300	0.000	0.000	0.075	33.333
Nigeria	0.380	0.395	0.395	0.395	229.000	248.000	248.000	248.000	0.400	0.450	0.450	0.450	0.000	0.000	0.000	0.000
Sudan	0.160	0.060	0.160	0.080	306.000	399.000	408.000	435.000	0.225	0.110	0.300	0.160	-0.140	-46.667	0.050	45.455
<b>South America</b>																
Brazil	1.094	1.090	0.980	0.980	1,393.0	1,428.0	1,422.0	1,422.0	7.000	7.150	6.400	6.400	0.000	0.000	-0.750	-10.490
Argentina	0.400	0.311	0.380	0.400	435.000	490.000	458.000	463.000	0.800	0.700	0.800	0.850	0.050	6.250	0.150	21.429
Paraguay	0.125	0.060	0.090	0.090	279.000	363.000	290.000	290.000	0.160	0.100	0.120	0.120	0.000	0.000	0.020	20.000
<b>Middle East</b>																
Turkey	0.630	0.520	0.380	0.380	1,313.0	1,298.0	1,318.0	1,318.0	3.800	3.100	2.300	2.300	0.000	0.000	-0.800	-25.806
Syria	0.214	0.200	0.180	0.180	1,038.0	1,252.0	1,210.0	1,210.0	1.020	1.150	1.000	1.000	0.000	0.000	-0.150	-13.043
Iran	0.115	0.120	0.120	0.120	757.000	726.000	726.000	726.000	0.400	0.400	0.400	0.400	0.000	0.000	0.000	0.000
<b>Australia</b>	0.145	0.065	0.150	0.150	2,027.0	2,077.0	1,742.0	1,742.0	1.350	0.620	1.200	1.200	0.000	0.000	0.580	93.548
<b>EU-27</b>																
Greece	0.330	0.315	0.250	0.250	924.000	916.000	958.000	958.000	1.400	1.325	1.100	1.100	0.000	0.000	-0.225	-16.981
Spain	0.052	0.054	0.055	0.050	892.000	746.000	633.000	610.000	0.213	0.185	0.160	0.140	-0.020	-12.500	-0.045	-24.324
<b>Egypt</b>	0.246	0.240	0.135	0.135	863.000	907.000	927.000	927.000	0.975	1.000	0.575	0.575	0.000	0.000	-0.425	-42.500
<b>Mexico</b>	0.115	0.110	0.115	0.115	1,231.0	1,227.0	1,287.0	1,287.0	0.650	0.620	0.680	0.680	0.000	0.000	0.060	9.677
<b>Others</b>	2.485	2.554	2.586	2.576	283.000	263.000	292.000	292.000	3.229	3.088	3.469	3.449	-0.020	-0.577	0.361	11.690

World and Selected Countries and Regions

9/12/2008 9:33:27 AM

**TABLE 18**

The table below presents a 27-year record of the differences between the September projection and the final estimate. Using world wheat production as an example, changes between the September projection and the final estimate have averaged 9.3 million tons (1.7 percent) and ranged from -30.7 to 13.1 million tons. The September projection has been below the final 16 times and above the final 11 times.

**RELIABILITY OF PRODUCTION PROJECTIONS**

COMMODITY AND REGION	PROJECTION AND FINAL ESTIMATES, 1981/82 - 2007/08 1/					
	Difference		Lowest	Highest	Below	Above
	Average	Average	Difference		Final	Final
	Percent	---Million metric tons---			Number of years 2/	
<b>WHEAT</b>						
World	1.7	9.3	-30.7	13.1	16	11
U.S.	1.4	0.9	-1.4	2.5	10	17
Foreign	1.9	9.2	-30.9	12.0	17	10
<b>COARSE GRAINS 3/</b>						
World	1.8	15.8	-50.6	24.9	21	6
U.S.	3.6	8.7	-21.5	26.0	18	9
Foreign	2.0	12.4	-29.6	13.9	19	8
<b>RICE (Milled)</b>						
World	1.9	6.6	-24.1	3.4	22	5
U.S.	4.0	0.2	-0.5	0.5	16	10
Foreign	1.9	6.6	-24.4	3.6	22	5
<b>SOYBEANS</b>						
World	3.0	6.8	-14.2	8.7	2	2
U.S.	5.2	4.4	-8.3	0.9	3	1
Foreign	6.4	8.8	-11.6	17.0	1	3
	---Million 480-lb. bales---					
<b>COTTON</b>						
World	3.3	3.0	-12.6	9.5	18	9
U.S.	5.2	0.9	-2.3	2.4	16	10
Foreign	3.6	2.7	-11.2	9.8	18	9
<b>UNITED STATES</b>	-----Million bushels-----					
<b>CORN</b>	3.9	328	-846	885	18	9
<b>SORGHUM</b>	4.6	27	-69	81	12	14
<b>BARLEY</b>	3.4	12	-29	36	10	17
<b>OATS</b>	7.3	14	-19	44	4	22

1/ The final estimate for 1981/82-2006/07 is defined as the first November estimate following the marketing year.

2/ May not total 27 if projection was the same as the final.

3/ Includes corn, sorghum, barley, oats, rye, millet, and mixed grain.