



## Inderide<sup>®</sup>

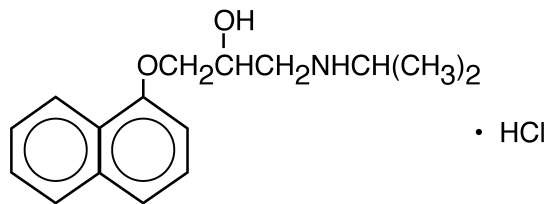
(propranolol hydrochloride [Inderal<sup>®</sup>]  
and hydrochlorothiazide)

**R<sub>x</sub>** only

### DESCRIPTION

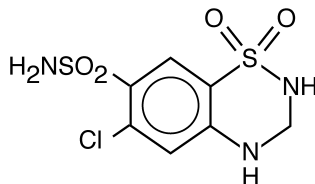
Inderide Tablets for oral administration combine two antihypertensive agents: Inderal (propranolol hydrochloride), a beta-adrenergic blocking agent, and hydrochlorothiazide, a thiazide diuretic-antihypertensive. Inderide 40/25 Tablets contain 40 mg propranolol hydrochloride and 25 mg hydrochlorothiazide; Inderide 80/25 Tablets contain 80 mg propranolol hydrochloride and 25 mg hydrochlorothiazide.

Inderal (propranolol hydrochloride) is a synthetic beta-adrenergic receptor-blocking agent chemically described as 1-(Isopropylamino)-3-(1-naphthyloxy)-2-propanol hydrochloride. Its structural formula is:



Propranolol hydrochloride is a stable, white, crystalline solid which is readily soluble in water and ethanol. Its molecular weight is 295.81.

Hydrochlorothiazide is a white, or practically white, practically odorless, crystalline powder. It is slightly soluble in water; freely soluble in sodium hydroxide solution; sparingly soluble in methanol; insoluble in ether, chloroform, benzene, and dilute mineral acids. Its chemical name is: 6-Chloro-3,4-dihydro-2H-1,2,4-benzothiadiazine-7-sulfonamide 1,1-dioxide. Its structural formula is:



The inactive ingredients contained in Inderide Tablets are lactose, magnesium stearate, microcrystalline cellulose, stearic acid, and yellow ferric oxide.

## **CLINICAL PHARMACOLOGY**

### **Propranolol hydrochloride (Inderal®)**

Propranolol hydrochloride is a nonselective beta-adrenergic receptor blocking agent possessing no other autonomic nervous system activity. It specifically competes with beta-adrenergic receptor stimulating agents for available receptor sites. When access to beta-receptor sites is blocked by propranolol, the chronotropic, inotropic, and vasodilator responses to beta-adrenergic stimulation are decreased proportionately.

Propranolol is almost completely absorbed from the gastrointestinal tract, but a portion is immediately metabolized by the liver on its first pass through the portal circulation.

Peak effect occurs in one to one-and-one-half hours. The biologic half-life is approximately four hours. Propranolol is not significantly dialyzable. There is no simple correlation between dose or plasma level and therapeutic effect, and the dose-sensitivity range, as observed in clinical practice, is wide. The principal reason for this is that sympathetic tone varies widely between individuals. Since there is no reliable test to estimate sympathetic tone or to determine whether total beta blockade has been achieved, proper dosage requires titration.

The mechanism of the antihypertensive effect of propranolol has not been established. Among the factors that may be involved in contributing to the antihypertensive action are (1) decreased cardiac output, (2) inhibition of renin release by the kidneys, and (3) diminution of tonic sympathetic nerve outflow from vasomotor centers in the brain. Although total peripheral resistance may increase initially, it readjusts to, or below, the pretreatment level with chronic use. Effects on plasma volume appear to be minor and somewhat variable. Propranolol has been shown to cause a small increase in serum potassium concentration when used in the treatment of hypertensive patients. Propranolol hydrochloride decreases heart rate, cardiac output, and blood pressure.

Beta-receptor blockade can be useful in conditions in which, because of pathologic or functional changes, sympathetic activity is detrimental to the patient. But there are also situations in which sympathetic stimulation is vital. For example, in patients with severely damaged hearts, adequate ventricular function is maintained by virtue of sympathetic drive, which should be preserved. In the presence of AV block greater than first degree, beta blockade may prevent the necessary facilitating effect of sympathetic activity on conduction. Beta blockade results in bronchial constriction by interfering with adrenergic bronchodilator activity, which should be preserved in patients subject to bronchospasm.

The proper objective of beta-blockade therapy is to decrease adverse sympathetic stimulation, but not to the degree that may impair necessary sympathetic support.

### **Hydrochlorothiazide**

Hydrochlorothiazide is a benzothiadiazine (thiazide) diuretic closely related to chlorothiazide. The mechanism of the antihypertensive effect of the thiazides is unknown. Thiazides do not affect normal blood pressure.

Thiazides affect the renal tubular mechanism of electrolyte reabsorption. At maximal therapeutic dosage, all thiazides are approximately equal in their diuretic potency.

Thiazides increase excretion of sodium and chloride in approximately equivalent amounts. Natriuresis causes a secondary loss of potassium and bicarbonate. Onset of diuretic action of hydrochlorothiazide occurs in two hours, and the peak effect in about four hours. Its action persists for approximately six to 12 hours. Thiazides are eliminated rapidly by the kidney.

## INDICATIONS AND USAGE

Inderide is indicated in the management of hypertension.

**This fixed combination is not indicated for initial therapy of hypertension. Hypertension requires therapy titrated to the individual patient. If the fixed combination represents the dosage so determined, its use may be more convenient in patient management.**

## CONTRAINDICATIONS

### Propranolol hydrochloride (Inderal®)

Propranolol is contraindicated in 1) cardiogenic shock; 2) sinus bradycardia and greater than first-degree block; 3) bronchial asthma; 4) congestive heart failure (see “**WARNINGS**”) unless the failure is secondary to a tachyarrhythmia treatable with propranolol.

### Hydrochlorothiazide

Hydrochlorothiazide is contraindicated in patients with anuria or hypersensitivity to this or other sulfonamide-derived drugs.

## WARNINGS

### Propranolol hydrochloride (Inderal®)

Hypersensitivity reactions, including anaphylactic/anaphylactoid reactions, have been associated with the administration of propranolol (see “**ADVERSE REACTIONS**”).

**Cardiac Failure:** Sympathetic stimulation is a vital component supporting circulatory function in congestive heart failure, and inhibition with beta blockade always carries the potential hazard of further depressing myocardial contractility and precipitating cardiac failure. Propranolol acts selectively without abolishing the inotropic action of digitalis on the heart muscle (i.e., that of supporting the strength of myocardial contractions). In patients already receiving digitalis, the positive inotropic action of digitalis may be reduced by propranolol's negative inotropic effect. The effects of propranolol and digitalis are additive in depressing AV conduction.

**Patients Without a History of Heart Failure:** Continued depression of the myocardium over a period of time can, in some cases, lead to cardiac failure. In rare instances, this has been observed during propranolol therapy. Therefore, at the first sign or symptom of impending cardiac failure, patients should be fully digitalized and/or given additional diuretic, and the response observed closely: a) if cardiac failure continues, despite adequate digitalization and diuretic therapy, propranolol therapy should be withdrawn (gradually, if possible); b) if tachyarrhythmia is being controlled, patients should be maintained on combined therapy and the patient closely followed until threat of cardiac failure is over.

**Angina Pectoris:** There have been reports of exacerbation of angina and, in some cases, myocardial infarction following *abrupt* discontinuation of propranolol therapy. Therefore, when discontinuance of propranolol is planned, the dosage should be gradually reduced and the patient should be carefully monitored. In addition, when propranolol is prescribed for angina pectoris, the patient should be cautioned against interruption or cessation of therapy without the physician's advice. If propranolol therapy is interrupted and exacerbation of angina occurs, it usually is advisable to reinstitute propranolol therapy and take other measures appropriate for the management of unstable angina pectoris. Since coronary artery disease may be unrecognized, it may be prudent to follow the above advice in patients considered at risk of having occult atherosclerotic heart disease, who are given propranolol for other indications.

**Nonallergic Bronchospasm** (e.g., chronic bronchitis, emphysema): PATIENTS WITH BRONCHOSPASTIC DISEASES SHOULD, IN GENERAL, NOT RECEIVE BETA BLOCKERS. Propranolol should be administered with caution since it may block bronchodilation produced by endogenous and exogenous catecholamine stimulation of beta receptors.

**Major Surgery:** The necessity or desirability of withdrawal of beta-blocking therapy prior to major surgery is controversial. It should be noted, however, that the impaired ability of the heart to respond to reflex adrenergic stimuli may augment the risks of general anesthesia and surgical procedures.

Propranolol, like other beta blockers, is a competitive inhibitor of beta-receptor agonists, and its effects can be reversed by administration of such agents, e.g., dobutamine or isoproterenol. However, such patients may be subject to protracted severe hypotension. Difficulty in starting and maintaining the heartbeat has also been reported with beta blockers.

**Diabetes and Hypoglycemia:** Beta-adrenergic blockade may prevent the appearance of certain premonitory signs and symptoms (pulse rate and pressure changes) of acute hypoglycemia in labile insulin-dependent diabetes. In these patients, it may be more difficult to adjust the dosage of insulin. Hypoglycemic attack may be accompanied by a precipitous elevation of blood pressure in patients on propranolol.

Propranolol therapy, particularly in infants and children, diabetic or not, has been associated with hypoglycemia especially during fasting as in preparation for surgery. Hypoglycemia also has been found after this type of drug therapy and prolonged physical exertion and has occurred in renal insufficiency, both during dialysis and sporadically, in patients on propranolol.

Acute increases in blood pressure have occurred after insulin-induced hypoglycemia in patients on propranolol.

**Thyrotoxicosis:** Beta blockade may mask certain clinical signs of hyperthyroidism. Therefore, abrupt withdrawal of propranolol may be followed by an exacerbation of symptoms of hyperthyroidism, including thyroid storm. Propranolol may change thyroid-function tests, increasing T<sub>4</sub> and reverse T<sub>3</sub>, and decreasing T<sub>3</sub>.

**Wolff-Parkinson-White Syndrome:** Several cases have been reported in which, after propranolol, the tachycardia was replaced by a severe bradycardia requiring a demand pacemaker. In one case this resulted after an initial dose of 5 mg propranolol.

**Skin Reactions:** Cutaneous reactions, including Stevens-Johnson Syndrome, toxic epidermal necrolysis, exfoliative dermatitis, erythema multiforme, and urticaria, have been reported with use of propranolol (see “**ADVERSE REACTIONS**”).

### **Hydrochlorothiazide**

Thiazides should be used with caution in severe renal disease. In patients with renal disease, thiazides may precipitate azotemia. In patients with impaired renal function, cumulative effects of the drug may develop.

Thiazides should also be used with caution in patients with impaired hepatic function or progressive liver disease, since minor alterations of fluid and electrolyte balance may precipitate hepatic coma.

Thiazides may add to or potentiate the action of other antihypertensive drugs. Potentiation occurs with ganglionic or peripheral adrenergic-blocking drugs.

Sensitivity reactions may occur in patients with a history of allergy or bronchial asthma. The possibility of exacerbation or activation of systemic lupus erythematosus has been reported.

## **PRECAUTIONS**

### **General**

#### **Propranolol hydrochloride (Inderal®)**

Propranolol should be used with caution in patients with impaired hepatic or renal function. Inderide is not indicated for the treatment of hypertensive emergencies.

*Risk of anaphylactic reaction.* While taking beta blockers, patients with a history of severe anaphylactic reaction to a variety of allergens may be more reactive to repeated challenge, either accidental, diagnostic, or therapeutic. Such patients may be unresponsive to the usual doses of epinephrine used to treat allergic reaction.

### **Hydrochlorothiazide**

All patients receiving thiazide therapy should be observed for clinical signs of fluid or electrolyte imbalance, namely hyponatremia, hypochloremic alkalosis, and hypokalemia. Serum and urine electrolyte determinations are particularly important when the patient is vomiting excessively or receiving parenteral fluids. Medication such as digitalis may also influence serum electrolytes. Warning signs, irrespective of cause, are: dryness of mouth, thirst, weakness, lethargy, drowsiness, restlessness, muscle pains or cramps, muscular fatigue, hypotension, oliguria, tachycardia, and gastrointestinal disturbances such as nausea and vomiting.

Hypokalemia may develop, especially with brisk diuresis or when severe cirrhosis is present.

Interference with adequate oral electrolyte intake will also contribute to hypokalemia. Hypokalemia can sensitize or exaggerate the response of the heart to the toxic effects of digitalis (e.g., increased ventricular irritability).

Hypokalemia may be avoided or treated by use of potassium supplements or foods with a high potassium content.

Any chloride deficit is generally mild, and usually does not require specific treatment except under extraordinary circumstances (as in liver or renal disease). Dilutional hyponatremia may occur in edematous patients in hot weather; appropriate therapy is water restriction rather than administration of salt, except in rare instances when the hyponatremia is life-threatening. In actual salt depletion, appropriate replacement is the therapy of choice.

Hyperuricemia may occur or frank gout may be precipitated in certain patients receiving thiazide therapy.

Diabetes mellitus which has been latent may become manifest during thiazide administration.

The antihypertensive effects of the drug may be enhanced in the postsympathectomy patient.

If progressive renal impairment becomes evident, consider withholding or discontinuing diuretic therapy.

Calcium excretion is decreased by thiazides. Pathologic changes in the parathyroid gland with hypercalcemia and hypophosphatemia have been observed in a few patients on prolonged thiazide therapy. The common complications of hyperparathyroidism, such as renal lithiasis, bone resorption, and peptic ulceration, have not been seen.

### **Information for Patients**

Beta-adrenoreceptor blockade can cause reduction of intraocular pressure. Patients should be told that Inderide may interfere with the glaucoma screening test. Withdrawal may lead to a return of increased intraocular pressure.

### **Laboratory Tests**

#### **Propranolol hydrochloride (Inderal®)**

Elevated blood urea levels in patients with severe heart disease, elevated serum transaminase, alkaline phosphatase, lactate dehydrogenase.

#### **Hydrochlorothiazide**

Periodic determination of serum electrolytes to detect possible electrolyte imbalance should be performed at appropriate intervals.

### **Drug/Drug Interactions**

#### **Propranolol hydrochloride (Inderal®)**

Patients receiving catecholamine-depleting drugs such as reserpine should be closely observed if Inderide is administered. The added catecholamine-blocking action may produce an excessive reduction of resting sympathetic nervous activity, which may result in hypotension, marked bradycardia, vertigo, syncopal attacks, or orthostatic hypotension.

Caution should be exercised when patients receiving a beta blocker are administered a calcium-channel blocking drug, especially intravenous verapamil, for both agents may depress myocardial contractility or atrioventricular conduction. On rare occasions, the concomitant intravenous use of a beta blocker and verapamil has resulted in serious adverse reactions, especially in patients with severe cardiomyopathy, congestive heart failure, or recent myocardial infarction.

Blunting of the antihypertensive effect of beta-adrenoceptor blocking agents by nonsteroidal anti-inflammatory drugs has been reported.

Hypotension and cardiac arrest have been reported with the concomitant use of propranolol and haloperidol.

*Aluminum hydroxide* gel greatly reduces intestinal absorption of propranolol.

*Ethanol* slows the rate of absorption of propranolol.

*Phenytoin*, *phenobarbitone*, and *rifampin* accelerate propranolol clearance.

*Chlorpromazine*, when used concomitantly with propranolol, results in increased plasma levels of both drugs.

*Antipyrine* and *lidocaine* have reduced clearance when used concomitantly with propranolol.

*Thyroxine* may result in a lower than expected T<sub>3</sub> concentration when used concomitantly with propranolol.

*Cimetidine* decreases the hepatic metabolism of propranolol, delaying elimination and increasing blood levels.

*Theophylline* clearance is reduced when used concomitantly with propranolol.

### **Hydrochlorothiazide**

Thiazide drugs may increase the responsiveness to tubocurarine.

Thiazides may decrease arterial responsiveness to norepinephrine. This diminution is not sufficient to preclude effectiveness of the pressor agent for therapeutic use.

Insulin requirements in diabetic patients may be increased, decreased, or unchanged.

Hypokalemia may develop during concomitant use of corticosteroids or ACTH.

### **Drug/Laboratory Test Interactions**

#### **Hydrochlorothiazide**

Thiazides may decrease serum PBI levels without signs of thyroid disturbance.

Thiazides should be discontinued before carrying out tests for parathyroid function (see “PRECAUTIONS—**General**”).

### **Carcinogenesis, Mutagenesis, Impairment of Fertility**

Combinations of propranolol and hydrochlorothiazide have not been evaluated for carcinogenic or mutagenic potential or for potential to adversely affect fertility.

#### **Propranolol hydrochloride (Inderal®)**

In dietary administration studies in which mice and rats were treated with propranolol for up to 18 months at doses of up to 150 mg/kg/day, there was no evidence of drug-related tumorigenesis. In a study in which both male and female rats were exposed to propranolol in their diets at concentrations of up to 0.05%, from 60 days prior to mating and throughout pregnancy and lactation for two generations, there were no effects on fertility. Based on differing results from Ames Tests performed by different laboratories, there is equivocal evidence for a genotoxic effect of propranolol in bacteria (*S.typhimurium* strain TA 1538).

#### **Hydrochlorothiazide**

Two-year feeding studies in mice and rats conducted under the auspices of the National Toxicology Program (NTP) uncovered no evidence of a carcinogenic potential of hydrochlorothiazide in female mice (at doses of up to approximately 600 mg/kg/day) or in male and female rats (at doses of up to approximately 100 mg/kg/day). The NTP, however, found equivocal evidence for hepatocarcinogenicity in male mice.

Hydrochlorothiazide was not genotoxic *in vitro* in the Ames bacterial mutagen assay (*S.typhimurium* strains TA 98, TA 100, TA 1535, TA 1537 and TA 1538) or in the Chinese Hamster Ovary (CHO) test for chromosomal aberrations. Nor was it genotoxic *in vivo* in assays using mouse germinal cell chromosomes, Chinese hamster bone marrow chromosomes, and the *Drosophila* sex-linked recessive lethal trait gene. Positive test results were obtained in the *in vitro* CHO Sister Chromatid Exchange (clastogenicity), Mouse Lymphoma Cell (mutagenicity) and *Aspergillus nidulans* non-disjunction assays.

Hydrochlorothiazide had no adverse effects on the fertility of mice and rats of either sex in studies wherein these species were exposed, via their diet, to doses of up to 100 mg/kg and 4 mg/kg, respectively, prior to mating and throughout gestation.

#### **Pregnancy: Pregnancy Category C**

Combinations of propranolol and hydrochlorothiazide have not been evaluated for effects on pregnancy in animals. Nor are there adequate and well-controlled studies of propranolol, hydrochlorothiazide, or Inderide in pregnant women. Inderide should be used during pregnancy only if the potential benefit justifies the potential risk to the fetus.



### **Propranolol hydrochloride (Inderal®)**

In a series of reproduction and developmental toxicology studies, propranolol was given to rats by gavage or in the diet throughout pregnancy and lactation. At doses of 150 mg/kg/day (>30 times the dose of propranolol contained in the maximum recommended human daily dose of Inderide), but not at doses of 80 mg/kg/day, treatment was associated with embryotoxicity (reduced litter size and increased resorption sites) as well as neonatal toxicity (deaths). Propranolol also was administered (in the feed) to rabbits (throughout pregnancy and lactation) at doses as high as 150 mg/kg/day (>45 times the dose of propranolol contained in the maximum recommended daily human dose of Inderide). No evidence of embryo or neonatal toxicity was noted. Intrauterine growth retardation has been reported in human neonates whose mothers received propranolol during pregnancy. Neonates whose mothers received propranolol at parturition have exhibited bradycardia, hypoglycemia and respiratory depression. Adequate facilities for monitoring these infants at birth should be available.

### **Hydrochlorothiazide**

Studies in which hydrochlorothiazide was orally administered to pregnant mice and rats at doses of up to 3000 and 1000 mg/kg/day, respectively, provided no evidence of harm to the fetus.

Thiazides cross the placental barrier and appear in cord blood. The use of thiazides in pregnant women requires that the anticipated benefit be weighed against possible hazards to the fetus. These hazards include fetal or neonatal jaundice, thrombocytopenia, and possibly other adverse reactions that have occurred in the adult.

### **Nursing Mothers**

#### **Propranolol hydrochloride (Inderal®)**

Propranolol is excreted in human milk. Caution should be exercised when Inderide is administered to a nursing woman.

#### **Hydrochlorothiazide**

Thiazides appear in breast milk. If the use of drug is deemed essential, the patient should stop nursing.

### **Pediatric Use**

Safety and effectiveness in pediatric patients have not been established.

### **Geriatric Use**

Clinical studies of Inderide did not include sufficient numbers of subjects aged 65 and over to determine whether they respond differently from younger subjects. Other reported clinical experience has not identified differences in responses between the elderly and younger patients.

In general, dose selection for an elderly patient should be cautious, usually starting at the low end of the dosing range, reflecting the greater frequency of decreased hepatic, renal, or cardiac function, and of concomitant disease or other drug therapy.

## **ADVERSE REACTIONS**

The following adverse reactions have been observed, but there is not enough systematic collection of data to support an estimate of their frequency. Within each category, adverse reactions are listed in decreasing order of severity. Although many side effects are mild and transient, some require discontinuation of therapy.

### **Propranolol hydrochloride (Inderal®)**

*Cardiovascular:* Congestive heart failure; hypotension; intensification of AV block; bradycardia; thrombocytopenic purpura; arterial insufficiency, usually of the Raynaud type; paresthesia of hands.

*Central Nervous System:* Reversible mental depression progressing to catatonia; mental depression manifested by insomnia, lassitude, weakness, fatigue; an acute reversible syndrome characterized by disorientation for time and place, short-term memory loss, emotional lability, slightly clouded sensorium, decreased performance on neuropsychometrics; hallucinations; visual disturbances; vivid dreams; light-headedness. Total daily doses above 160 mg (when administered as divided doses of greater than 80 mg each) may be associated with an increased incidence of fatigue, lethargy, and vivid dreams.

*Gastrointestinal:* Mesenteric arterial thrombosis; ischemic colitis; nausea, vomiting, epigastric distress, abdominal cramping, diarrhea, constipation.

*Allergic:* Hypersensitivity reactions, including anaphylactic/anaphylactoid reactions; laryngospasm and respiratory distress; pharyngitis and agranulocytosis; fever combined with aching and sore throat; erythematous rash.

*Respiratory:* Bronchospasm.

*Hematologic:* Agranulocytosis; nonthrombocytopenic purpura; thrombocytopenic purpura.

*Autoimmune:* In extremely rare instances, systemic lupus erythematosus has been reported.

*Miscellaneous:* Male impotence. Alopecia, LE-like reactions, psoriasiform rashes, dry eyes, and Peyronie's disease have been reported rarely. Oculomucocutaneous reactions involving the skin, serous membranes, and conjunctivae reported for a beta blocker (practolol) have not been associated with propranolol.

*Skin:* Stevens-Johnson Syndrome; toxic epidermal necrolysis; exfoliative dermatitis; erythema multiforme; urticaria.

### **Hydrochlorothiazide**

*Cardiovascular:* Orthostatic hypotension (may be aggravated by alcohol, barbiturates or narcotics).

*Central Nervous System:* Dizziness, vertigo, headache, xanthopsia, paresthesias.

*Gastrointestinal:* Pancreatitis; jaundice (intrahepatic cholestatic jaundice); sialadenitis; anorexia, nausea, vomiting, gastric irritation, cramping, diarrhea, constipation.

*Hypersensitivity:* Anaphylactic reactions; necrotizing angitis (vasculitis, cutaneous vasculitis); respiratory distress including pneumonitis; fever; urticaria, rash, purpura, photosensitivity.

*Hematologic:* Aplastic anemia, agranulocytosis, leukopenia, thrombocytopenia.

*Miscellaneous:* Hyperglycemia, glycosuria; hyperuricemia; muscle spasm; weakness; restlessness; transient blurred vision.

Whenever adverse reactions are moderate or severe, thiazide dosage should be reduced or therapy withdrawn.

## **OVERDOSAGE**

The propranolol hydrochloride component may cause bradycardia, cardiac failure, hypotension, or bronchospasm. Propranolol is not significantly dialyzable.

The hydrochlorothiazide component can be expected to cause diuresis. Lethargy of varying degree may appear and may progress to coma within a few hours, with minimal depression of respiration and cardiovascular function, and in the absence of significant serum electrolyte changes or dehydration. The mechanism of central nervous system depression with thiazide overdosage is unknown. Gastrointestinal irritation and hypermotility can occur, temporary elevation of BUN has been reported, and serum electrolyte changes could occur, especially in patients with impairment of renal function.

The oral LD<sub>50</sub> dosages in rats and mice for propranolol, hydrochlorothiazide, and combined propranolol/hydrochlorothiazide (40/25, 80/25) are 364 to 533 mg/kg, greater than 2,750 to 5,000 mg/kg, and 538 to 845 mg/kg, respectively.

## **Treatment**

The following measures should be employed:

General—If ingestion is, or may have been, recent, evacuate gastric contents, taking care to prevent pulmonary aspiration.

Bradycardia—Administer atropine (0.25 to 1.0 mg). If there is no response to vagal blockade, administer isoproterenol cautiously.

Cardiac Failure—Digitalization and diuretics.

Hypotension—Vasopressors, e.g., levarterenol or epinephrine.

Bronchospasm—Administer isoproterenol and aminophylline.

Stupor or Coma—Administer supportive therapy as clinically warranted.

Gastrointestinal Effects—Though usually of short duration, these may require symptomatic treatment.

Abnormalities in BUN and/or Serum Electrolytes—Monitor serum electrolyte levels and renal function; institute supportive measures as required individually to maintain hydration, electrolyte balance, respiration, and cardiovascular-renal function.

## **DOSAGE AND ADMINISTRATION**

The dosage must be determined by individual titration.

Hydrochlorothiazide can be given at doses of 12.5 to 50 mg per day when used alone. The initial dose of propranolol is 80 mg daily, and it may be increased gradually until optimal blood pressure control is achieved. The usual effective dose when used alone is 160 to 480 mg per day.

One Inderide Tablet twice daily can be used to administer up to 160 mg of propranolol and 50 mg of hydrochlorothiazide. For doses of propranolol greater than 160 mg the combination products are not appropriate, because their use would lead to an excessive dose of the thiazide component.

When necessary, another antihypertensive agent may be added gradually beginning with 50 percent of the usual recommended starting dose to avoid an excessive fall in blood pressure.

## **HOW SUPPLIED**

### **Inderide 40/25**

Each hexagonal-shaped, off-white, scored tablet, embossed with an “I” and imprinted with “INDERIDE 40/25,” contains 40 mg propranolol hydrochloride (Inderal<sup>®</sup>) and 25 mg hydrochlorothiazide, in bottles of 100 (NDC 0046-0484-81) and 1,000 (NDC 0046-0484-91).

### **Inderide 80/25**


Each hexagonal-shaped, off-white, scored tablet, embossed with an “I” and imprinted with “INDERIDE 80/25,” contains 80 mg propranolol hydrochloride (Inderal<sup>®</sup>) and 25 mg hydrochlorothiazide, in bottles of 100 (NDC 0046-0488-81).

**Store at room temperature (approximately 25° C).**

**Protect from moisture, freezing, and excessive heat.**

**Dispense in a well-closed container as defined in the USP.**

The appearance of these tablets is a registered trademark of Wyeth-Ayerst Laboratories.

 Ayerst Laboratories  
A Wyeth-Ayerst Company  
Philadelphia, PA 19101

W10487C001  
ET02  
Rev 11/03