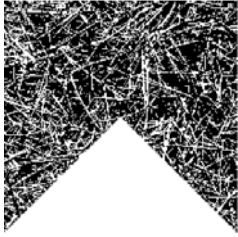


IPM



Homeowner Lawns

Chemical Weed Control Recommendations for 2008

There is nothing simple, automatic, or easy about controlling weeds in home lawns. Each lawn or home situation is different. There are different lawn grasses, different soils, different ornamental plants, and different weed problems. Also, different degrees of management will be used in maintaining the lawn. All of these factors must be considered when attempting to control weeds.

The first step in any weed control program is to identify the weed or weeds that are a problem. Often, a homeowner cannot identify the different weeds. Personnel in the county Extension office, local nurseries, and lawn and garden centers can provide the necessary identification. Once problem weeds have been identified, it is then important to select the appropriate herbicide product for the situation and target weeds. No single product will control all the weeds, and no single product can be used in all lawn grasses or in all situations.

Herbicide products available to homeowners are packaged in small containers—typically in pints and quarts. These products are manufactured in diluted forms for ease of application and for safety as well as to reduce the overall cost. Each product contains one or more different herbicides. Although several products sold by different companies contain the same herbicides, they may differ in concentration of herbicides, ratios, and/or chemical form. Selecting the herbicide product to use is made more difficult by the fact that lawn grasses behave or respond differently to each herbicide. Some herbicide products will have different rates for different lawn grasses. The applicator should abide by these rates when making the application.

The product label is the best source of information as to which lawn grasses can be treated with the particular product. Read the label carefully before purchase and use the information to ensure safety to the applicator as well as the home lawn setting.

There are several terms that are used throughout this section on weed control which should be defined.

Preemergence herbicide: A herbicide that is applied to the lawn grass surface before problem weeds germinate and emerge from the ground. These herbicides must be applied before a weed problem develops. Usually, preemergence herbicides are ineffective when applied to emerged weeds.

Postemergence herbicide: A herbicide that is applied after weeds have emerged, but while they are small and actively

growing. This type of herbicide is applied to the leaf and stem tissue of the problem weeds. Generally, postemergence herbicides will not control weeds that germinate and emerge after the application.

Non-selective herbicide: A herbicide that kills all vegetation treated. Typically, these products are applied to the foliage of the weeds. This type herbicide will also severely injure or kill desirable plants. The non-selective herbicide products listed in this publication do not have any soil activity; that is, they are not soil sterilants.

RTU: An abbreviation that stands for “Ready To Use.” It is used to designate the products that are manufactured in a ready-to-use state. In other words, the product requires no additional water or handling and is typically available in a spray- or applicator-type container.

“Green-up” period (transition period): A short period of time in the spring and/or fall when desirable lawn grass is emerging from its dormant state. It is during this period that grasses are most sensitive to herbicides and, in many cases, the herbicide labels prohibit their use.

Granular herbicide forms can be applied with a drop-type fertilizer spreader. Herbicide products available in a liquid form must be mixed with water prior to use and applied in some type of applicator which will provide uniform application. Homeowners typically use devices such as hose-end sprayers, pressure- or pump-type sprayers, or the more sophisticated backpack sprayers. Generally, equipment used for applying herbicides should no longer be used for treating desirable plants. It is difficult to remove all traces of herbicides from spray applicators. It is possible that herbicide contamination could cause problems on desirable shrubs, flowers, or trees.

The volume of water or spray solution to use when making a herbicide application is suggested on the herbicide container label. Generally, when pump-up sprayers are to be used, most herbicide labels suggest that 2 to 4 gallons of herbicide spray mix be applied per 1000 square feet of lawn surface. However, when hose-end sprayers are used, many herbicide labels suggest that 4 to 6 gallons of herbicide spray mix be applied per 1000 square feet of lawn surface. Read the label carefully to determine the spray volume as well as the other necessary application instructions before using the herbicide. Following is a list of herbicides currently recommended for use on home lawns.

Table 1. Herbicides Recommended for Controlling Weeds on Home Lawns

Herbicide and Trade Name Examples	Application Rate: Product Amount per 1000 Sq. Ft.	Lawn Grass Type	Comments
Preemergence			
atrazine			
IMAGE HERBICIDE FOR ST. AUGUSTINEGRASS AND CENTIPEDEGRASS WITH ATRAZINE (4%)	8.8 fl.oz.	Centipedegrass, St. Augustinegrass	Provides preemergence and postemergence control of broadleaf weeds and annual bluegrass. Control of summer annual grasses is weak. Atrazine may be applied anytime to St. Augustine and centipede grasses except during “green up.” Best results occur when application is made before weeds emerge or when still small. Two applications of atrazine during a single year may be needed to control some hardy weeds. See label for appropriate rate and times of application. DO NOT apply to cool-season grasses such as fescue, ryegrass, or bluegrass. DO NOT reseed for 4 months before or 6 months after herbicide application. Some fertilizer- atrazine combination products permit use on zoysiagrass lawns. Use these products on zoysiagrass only as an early spring application. Rain or irrigation is needed within 7 days after application for consistent control. See label for additional application instructions.
ORTHO WEED-B-GON SPOT WEED KILLER FOR ST. AUGUSTINE LAWNS (0.6%)	RTU	St. Augustinegrass	
SA-50 BRAND ATRAZINE ST. AUGUSTINE WEED KILLER (4%)	8.6 fl. oz.	Centipedegrass, St. Augustinegrass	
SCOTT'S BONUS SOUTHERN WEED & FEED (29-3-4) (1.055%)	4.2 lb.	Centipedegrass, St. Augustinegrass, Zoysiagrass	
STA-GREEN ST. AUGUSTINE WEED & FEED (27-3-8) +Fe	4 lb.	Centipedegrass, St. Augustinegrass, Zoysiagrass	
STA-GREEN CENTIPEDE WEED & FEED (15-0-15) +Fe	4 lb.	Centipedegrass, St. Augustinegrass, Zoysiagrass	
VIGORO ULTRA TURF ST. AUGUSTINE WEED & FEED WITH ATRAZINE (29-3-5)	4 lb.	Centipedegrass, St. Augustinegrass, Zoysiagrass	
benefin + trifluralin			
GREEN LIGHT CRABGRASS PREVENTER 2G	2.8 lb.	Bermudagrass, Centipedegrass, Kentucky bluegrass, St. Augustinegrass, Tall fescue, Zoysiagrass	Provides preemergence control of annual grasses and several broadleaf weeds. Irrigate treated area after application to activate herbicide. DO NOT apply to newly sprigged areas. DO NOT reseed treated areas.
HI-YIELD CRABGRASS CONTROL 2G	2.25-3.5 lb.	Bermudagrass, Centipedegrass, Kentucky bluegrass, Ryegrass, St. Augustinegrass, Tall fescue, Zoysiagrass	
SA BRAND TEAM 2G	1.75-3.5 lb.	Bermudagrass, Centipedegrass, Kentucky bluegrass, St. Augustinegrass, Tall fescue, Zoysiagrass	
bensulide			
HI-YIELD BETASAN CRABGRASS AND WEED PREVENTER (3.6 %)	4.8-8 lb.	Bermudagrass, Centipedegrass, St. Augustinegrass, Tall fescue, Zoysiagrass	Provides preemergence control of annual grasses and several broadleaf weeds. Also provides control of annual bluegrass (see label for appropriate rate and time of application). Lightly irrigate treated area after application to activate the herbicide. DO NOT make application to newly sprigged lawns. DO NOT reseed treated areas for 4 months after treatment.

Herbicide and Trade Name Examples	Application Rate: Product Amount per 1000 Sq. Ft.	Lawn Grass Type	Comments
Preemergence (cont.)			
dithiopyr			
HI-YIELD T/O WEED AND GRASS STOPPER (0.125%)	3.5-4.7 lb.	Bermudagrass, Centipede-grass, St. Augustinegrass, Tall fescue, Zoysiagrass	Provides preemergence control of annual grasses such as crabgrass and foxtails and some small-seeded broadleaf weeds such as spurge. Will provide postemergence control of small crabgrass less than 4 weeks old.
STA-GREEN CRAB-EX CRABGRASS PREVENTER	3.4 lb.	Bermudagrass, Centipede-grass, St. Augustinegrass, Tall fescue, Zoysiagrass	
PREEN LAWN CRABGRASS PREVENTER	3.4-4.5 lb.	Bermudagrass, Centipede-grass, Kentucky bluegrass, St. Augustinegrass, Tall fescue, Zoysiagrass	
isoxaben			
GREEN LIGHT PORTRAIT BROADLEAF WEED PREVENTER (0.38%G)	4.6-5.7 lb.	Bermudagrass, Centipede-grass, Kentucky bluegrass, St. Augustinegrass, Tall fescue, Zoysiagrass	Provides preemergence control of winter annual broadleaf weeds when applied in early fall. Rainfall or irrigation needed for activation. DO NOT reseed for 4 months.
pendimethalin			
SCOTT'S HALTS CRABGRASS PREVENTER (1.71%G)	2 lb.	Bermudagrass, Centipede-grass, Kentucky bluegrass, St. Augustinegrass, Tall fescue, Zoysiagrass	Provides preemergence control of summer grasses. Application should be made in early spring before weed seeds germinate. For goosegrass control in the spring, a second application or treatment should be made 8 weeks after the first application. Can be applied in late August or early September for annual bluegrass and chickweed control. DO NOT apply within 5 months after sprigging grass in lawn; DO NOT reseed area for 4 months after application. DO NOT use on newly seeded areas until after the fourth mowing.
Postemergence			
2,4-D			
HI-YIELD 2,4-D AMINE NO. 4	0.75-1.5 fl. oz.	Bermudagrass, Zoysiagrass	Provides postemergence control of many broadleaf weeds, wild garlic, and wild onion. Best results are obtained when weeds are small and actively growing. A second treatment in 10 to 14 days may be needed to control hardy weeds. Spray only when air is calm to avoid drift to sensitive plants. DO NOT water lawn for 24 hours after applying. DO NOT apply herbicide within the dripline of trees, shrubs, and flowers. Use half the recommended rate on St. Augustinegrass or on newly seeded lawns. DO NOT use when temperatures are above 85°F. For wild onion or garlic control, treat in November or December and again in February. Repeat program for 3 consecutive years. Treat ONLY if day temperature is above 60°F for several days before treatment.
SA BRAND 2,4-D AMINE WEED KILLER	1-1.5 fl.oz.	Bermudagrass, Tall fescue, Zoysiagrass	

Herbicide and Trade Name Examples	Application Rate: Product Amount per 1000 Sq. Ft.	Lawn Grass Type	Comments
Postemergence (cont.)			
2,4-D + MCPP + dicamba ACE LAWN WEED KILLER	2-4 fl. oz.	Bermudagrass, Centipede-grass, St. Augustinegrass, Tall fescue, Zoysiagrass	Provides the broadest spectrum of broadleaf weed control. Best results are obtained when weeds are small and actively growing. To ensure actively growing weeds, water 2 to 3 days prior to spraying. This combination works faster when applied at temperatures above 70°F. Use the low rate on St. Augustine and centipede grasses and the high rates on zoysia, bluegrass, and fescue lawns. Some of the products listed permit only spot treatment on St. Augustine and centipede lawns to reduce overall injury. DO NOT water for 24 hours after application. DO NOT apply when air temperature is expected to exceed 85°F. DO NOT spray within the dripline or root zone of desirable trees, shrubs, flowers, or vegetables. DO NOT reseed treated areas for 3 to 4 weeks after use. Make application in the spring when weeds are small and actively growing. Hard-to-control weeds may require a second treatment 3 to 4 weeks later. Apply when air is calm to avoid spray drift to desirable ornamental plants. DO NOT apply when air temperature is above 85°F. DO NOT water for 48 hours after use. Water regularly thereafter to maintain a quality lawn. On newly established lawns, DO NOT use until grass has been mowed three or four times. DO NOT reseed sod or sprig treated areas for 3 weeks after use.
BAYER SOUTHERN WEED KILLER FOR LAWNS	RTU	Bermudagrass, Centipede-grass, St. Augustinegrass, Tall fescue, Zoysiagrass	
BAYER SOUTHERN WEED KILLER FOR LAWN CONCENTRATE	2-4 fl.oz.	Bermudagrass, Centipede-grass, St. Augustinegrass, Tall fescue, Zoysiagrass	
BONIDE WEED BEATER LAWN SPOT WEEDER	RTU	Bermudagrass, Centipede-grass, Kentucky bluegrass, St. Augustinegrass, Tall fescue, Zoysiagrass	
BONIDE WEED BEATER LAWN WEED KILLER CONCENTRATE	2-4 fl.oz.	Bermudagrass, Centipede-grass, Kentucky bluegrass, St. Augustinegrass, Tall fescue, Zoysiagrass	
BONIDE WEED BEATER LAWN WEED KILLER READY-TO-SPRAY	See label Hose-end	Bermudagrass, Centipede-grass, Kentucky bluegrass, St. Augustinegrass, Tall Fescue, Zoysiagrass	
ENFORCER WEED SHOT LAWN WEED KILLER	RTU	Bermudagrass, Centipede-grass, St. Augustinegrass, Tall fescue, Zoysiagrass	
ENFORCER WEED SHOT LAWN WEED KILLER CONCENTRATE	4-8 fl.oz. Hose-end	Bermudagrass, Centipede-grass, Ryegrass, St. Augustinegrass, Tall fescue, Zoysiagrass	
ENFORCER WEED SHOT WEED KILLER	2.6-5.3 fl.oz.	Bermudagrass, Ryegrass, Tall fescue, Zoysiagrass	
FERTI-LOME WEED-OUT LAWN WEED KILLER CONCENTRATE	2-4 fl. oz.	Bermudagrass, Centipede-grass, Kentucky bluegrass, St. Augustinegrass, Tall fescue, Zoysiagrass	
GORDON'S TRIMEC LAWN WEED KILLER	2-4 fl.oz.	Bermudagrass, Centipede-grass, Ryegrass, St. Augustinegrass, Tall fescue, Zoysiagrass	

Herbicide and Trade Name Examples	Application Rate: Product Amount per 1000 Sq. Ft.	Lawn Grass Type	Comments
Postemergence (cont.)			
2,4-D + MCPP + dicamba (cont.) GREEN LIGHT WIPE-OUT BROADLEAF WEED KILLER	3.33-5 fl.oz.	Bermudagrass, Centipede-grass, Ryegrass, St. Augustinegrass, Tall fescue, Zoysiagrass	Provides the broadest spectrum of broadleaf weed control. Best results are obtained when weeds are small and actively growing. To ensure actively growing weeds, water 2 to 3 days prior to spraying. This combination works faster when applied at temperatures above 70°F. Use the low rate on St. Augustine and centipede grasses and the high rates on zoysia, bluegrass, and fescue lawns. Some of the products listed permit only spot treatment on St. Augustine and centipede lawns to reduce overall injury. DO NOT water for 24 hours after application. DO NOT apply when air temperature is expected to exceed 85°F.
GREEN LIGHT WIPE-OUT BROADLEAF WEED KILLER	RTU	Bermudagrass, Centipede-grass, Kentucky bluegrass, St. Augustine-grass, Tall fescue, Zoysiagrass	DO NOT spray within the dripline or root zone of desirable trees, shrubs, flowers, or vegetables. DO NOT reseed treated areas for 3 to 4 weeks after use. Make application in the spring when weeds are small and actively growing. Hard-to-control weeds may require a second treatment 3 to 4 weeks later. Apply when air is calm to avoid spray drift to desirable ornamental plants. DO NOT apply when air temperature is above 85°F. DO NOT water for 48 hours after use. Water regularly thereafter to maintain a quality lawn. On newly established lawns, DO NOT use until grass has been mowed three or four times. DO NOT reseed sod or sprig treated areas for 3 weeks after use.
MAXIDE DANDELION AND LAWN WEED KILLER CONCENTRATE	2.6-5.3 fl.oz.	Bermudagrass, Centipede-grass, St. Augustinegrass, Tall fescue, Zoysiagrass	
MAXIDE DANDELION AND BROADLEAF WEED KILLER	RTU	Bermudagrass, Tall fescue, Zoysiagrass	
ORTHO WEED-B-GON MAX WEED KILLER FOR LAWNS READY TO USE	RTU	Bermudagrass, Centipede-grass, Tall fescue, Zoysiagrass	
PREEN LAWN WEED KILLER CONCENTRATE	3.2-6.3 fl. oz.	Bermudagrass, Centipede-grass, Fescue, St. Augustinegrass, Kentucky bluegrass, Zoysiagrass	
SA BRAND LAWN WEED KILLER WITH TRIMEC	2.5-3.75 fl.oz.	Bermudagrass, Centipede-grass, St. Augustinegrass, Tall fescue, Kentucky bluegrass	
SPECTRACIDE WEED STOP WEED KILLER FOR LAWNS CONCENTRATE	1.5-4 fl.oz.	Bermudagrass, Centipede-grass, Kentucky bluegrass, Ryegrass, St. Augustine-grass, Tall fescue, Zoysiagrass	
SPECTRACIDE WEED STOP WEED KILLER FOR LAWNS	RTU	Bermudagrass, Centipede-grass, St. Augustinegrass, Tall fescue, Zoysiagrass	
SPECTRACIDE WEED STOP WEED KILLER FOR LAWNS CONCENTRATE READY TO SPRAY	1.5-4 fl.oz Hose-end	Bermudagrass, Centipede-grass, St. Augustinegrass, Tall fescue, Zoysiagrass	

Herbicide and Trade Name Examples	Application Rate: Product Amount per 1000 Sq. Ft.	Lawn Grass Type	Comments
Postemergence (cont.)			
2,4-D + MCPP + dicamba + carfentrazone			
FERTI-LOME WEED-FREE ZONE	0.75-2 fl. oz.	Bermudagrass, Centipede-grass, Kentucky bluegrass, St. Augustinegrass, Tall fescue, Zoysiagrass	Provides broadest spectrum of postemergence broadleaf weed control. Apply to small, actively growing weeds. Do not apply during "spring transition." Treatment is effective in controlling a number of winter weeds. DO NOT apply when day temperature is above 90°F. See label for appropriate use rate. RTU products are available.
GORDON'S SPEED-ZONE LAWN WEED KILLER	1.1-1.5 fl. oz.	Bermudagrass, Kentucky bluegrass, Tall fescue, Zoysiagrass	
2,4-D + triclopyr + dicamba WEED-B-GON MAX CONCENTRATE	2-4 fl. oz.	Bermudagrass, Kentucky bluegrass, Tall fescue, Zoysiagrass	Provides broad spectrum weed control. Use low rate on bermudagrass and zoysia and high rate on fescue and bluegrass. DO NOT apply to centipede or St. Augustinegrass.
WEED-B-GON MAX READY TO SPRAY	RTU	Bermudagrass, Kentucky bluegrass, Tall fescue, Zoysiagrass	
bentazon BASAGRAN T/O	0.75 fl.oz.	Bermudagrass, Centipede-grass, Kentucky bluegrass, Ryegrass, St. Augustine-grass, Tall fescue, Zoysia-grass	Apply when yellow nutsedge is actively growing under good moisture conditions. Apply at 10- to 14-day intervals until nutsedge is controlled. DO NOT make more than three applications in a single growing season. Avoid spraying adjacent trees, shrubs, and flowers. DO NOT mow 3 to 5 days before or after application. Purple nutsedge will not be controlled by this herbicide. See label for recommendations about adding crop oil concentrate for control of some weeds, including yellow nutsedge.
HI-YIELD BASAGRAN	0.75 fl.oz.	Bermudagrass, Centipede-grass, Kentucky bluegrass, Ryegrass, St. Augustine-grass, Tall fescue, Zoysia-grass	
SA BRAND SEDGEHAMMER (contains BASAGRAN)	0.75 fl.oz.	Bermudagrass, Centipede-grass, Kentucky bluegrass, Ryegrass, St. Augustine-grass, Tall fescue, Zoysia-grass	
halosulfuron SEDEHAMMER 75DF	0.9 gram	Bermudagrass, Centipede-grass, St. Augustinegrass, Tall fescue, Zoysiagrass.	Controls yellow and purple nutsedge and suppresses green kyllinga. Follow label directions for mixing and use. Apply to nutsedge with three to eight leaves. A second application may be needed 6 to 10 weeks after the first. DO NOT mow for 2 days before or after application. DO NOT apply in vegetable or flower gardens. Add a non-ionic surfactant at 2 teaspoons per gallon of spray mix.

Herbicide and Trade Name Examples	Application Rate: Product Amount per 1000 Sq. Ft.	Lawn Grass Type	Comments
Postemergence (cont.)			
imazaquin IMAGE HERBICIDE CONSUMER CONCENTRATE (3.3%) KILLS NUTSEDGE	3.75 fl. oz.	Bermudagrass, Centipede-grass, St. Augustinegrass, Zoysiagrass	To control summer weeds, including nutsedge, apply after turf “green-up” in spring when weeds are small and actively growing. Irrigate treated area 1 to 7 days after applying. To control winter weeds, including wild garlic, treat in the fall after first frost when weeds are small and actively growing. Mowing 1 to 2 weeks after treatment will improve appearance and control. DO NOT apply on newly seeded, sprigged, or sodded turfgrass. DO NOT apply to St. Augustinegrass in the fall for winter weed control or on any labeled grass that does not go dormant.
sethoxydim HI-YIELD VANTAGE GRASS KILLER	0.5 fl.oz.	Centipedegrass	Controls annual grasses and suppresses bahiagrass growth. DO NOT make application within 3 weeks after “green up.”
POAST	0.375-0.5 fl.oz.	Centipedegrass	The low rate can be used on newly planted centipede when 3 inches of stolon growth has occurred. Two applications of Vantage or Poast can be made to established
SA BRAND VANTAGE	0.5-1 fl.oz.	Centipedegrass	centipedegrass for bahiagrass suppression.
VANTAGE	0.5-0.75 fl.oz.	Centipedegrass	Time the second application 10 to 14 days after the first application. DO NOT mow the centipede lawn for 7 days before or after application. DO NOT mix Vantage or Poast with any other herbicide or pesticide product. Will not control nutgrass or any broadleaf weeds. Add 1.5 tablespoons of crop oil concentrate per 1000 square feet when applying Poast or Hi-Yield product.

Herbicide and Trade Name Examples	Application Rate: Product Amount per 1000 Sq. Ft.	Lawn Grass Type	Comments
NOTE: The organic arsenical herbicides (MSMA, DSMA, CAMA, and cacodylic acid) are currently in the final stages of reregistration review by the Environmental Protection Agency (EPA). There is a likelihood that one or more of these herbicides will have their uses cancelled for turf. The products listed below contain an organic arsenical herbicide and may have their label cancelled by the 2008 use season.			
Postemergence			
MSMA, DSMA, CAMA BONIDE MSMA CRABGRASS KILLER	1 fl.oz.	Bermudagrass, Kentucky bluegrass, Zoysiagrass	Provides good postemergence control of annual grasses, dallisgrass, bahiagrass, and nutsedge. Grasses must be actively growing and small for consistent control. Grasses must not be under temperature or moisture stress at time of treatment. Water before applying, if necessary. DO NOT water for 24 hours after application. For best results, apply in the morning after the dew has dried and use the highest listed rate for control of dallisgrass, nutgrass, and bahiagrass. Treat again at 7- to 14-day intervals. Each brand listed has different application instructions, labeled lawn grasses, and times of application. DO NOT USE ON ST. AUGUSTINE OR CENTIPEDE GRASSES. DO NOT apply to new turf until after the third mowing. DO NOT apply at temperatures above 85°F or temporary discoloration may occur. Zoysiagrass cultivars vary in tolerance to these herbicides. Meyer is more tolerant to these chemicals than Emerald or Matrella.
ENFORCER CRABGRASS KILLER (MSMA)	4 oz.	Bermudagrass, Zoysiagrass	
FERTI-LOME CRABGRASS, NUTGRASS, AND DALLISGRASS KILLER (MSMA)	5 oz.	Bermudagrass, Zoysiagrass	
GORDON'S CRABGRASS AND NUTGRASS KILLER (MSMA)	4 fl.oz.	Bermudagrass, Zoysiagrass	
GREEN LIGHT MSMA CRABGRASS KILLER	1-2 fl.oz.	Bermudagrass, Zoysiagrass	
HI-YIELD 529 MSMA WEED KILLER	2 fl.oz.	Bermudagrass, Kentucky bluegrass, Zoysiagrass	
ORTHO WEED-B-GON CRABGRASS KILLER FOR LAWNS (CAMA)	7.5-15 fl.oz.	Bermudagrass, Zoysiagrass	
ORTHO WEED-B-GON CRABGRASS KILLER FOR LAWNS (CAMA)	RTU	Bermudagrass, Zoysiagrass	
2,4-D + MCPP + dicamba + MSMA BAYER ALL-IN-ONE WEED KILLER FOR LAWNS	3-7 fl.oz.	Bermudagrass, Kentucky bluegrass, Tall fescue, Zoysiagrass	Provides broadest spectrum of broadleaf and grass postemergence weed control. Apply when weeds are small and actively growing. Apply when temperatures are above 70°F. Use low rate and apply to fescue and Kentucky bluegrass before temperatures exceed 80°F. DO NOT apply to bermuda and zoysia under drought conditions or when temperatures are above 90°F.
BONIDE WEED BEATER PLUS CRABGRASS & BROADLEAF WEED KILLER	3-4 fl.oz.	Bermudagrass, Kentucky bluegrass, Tall fescue, Zoysiagrass	
BONIDE WEED BEATER PLUS CRABGRASS & NUTGRASS KILLER	RTU Hose-end	Bermudagrass, Kentucky bluegrass, Tall fescue, Zoysiagrass	
GORDON'S TRIMEC PLUS	RTU	Bermudagrass, Kentucky bluegrass, Tall fescue, Zoysiagrass	
GORDON'S TRIMEC PLUS CONCENTRATE	3-4 fl. oz.	Bermudagrass, Kentucky bluegrass, Tall fescue, Zoysiagrass	

Table 2. Effectiveness of Selected Herbicides on Common Lawngrass Weeds

Weeds	Preemergence					
	atrazine	benefin	bensulide	dithiopyr	pendimethalin	simazine
Annual bluegrass	X	X	X	X	X	X
Annual lespedeza	X	--	--	--	--	X
Bahiagrass	--	--	--	--	--	--
Bittercress	--	--	--	--	--	--
Common chickweed	X	X	--	X	X	X
Common greenbrier	--	--	--	--	--	--
Common woodsorrel	X	--	--	X	--	X
Cudweed	--	--	--	--	--	--
Dandelion	X	--	--	--	--	--
Dichondra	X	--	--	--	--	--
False dandelion	X	--	--	--	--	--
Florida betony	X	--	--	--	--	--
Goosegrass	--	--	X	X	X	X
Gripeweed	X	--	--	X	--	--
Henbit	X	X	X	X	X	X
Large crabgrass	X	X	X	X	X	X
Lawn burweed	X	--	--	--	--	X
Pennywort	X	--	--	--	--	--
Prostrate spurge	X	--	--	X	X	X
Purple nutsedge	--	--	--	--	--	--
Virginia buttonweed	--	--	--	--	--	--
Wild garlic	--	--	--	--	--	--
Wild violets	--	--	--	--	--	--
Yellow nutsedge	--	--	--	--	--	--

Weeds	Postemergence							
	bentazon	dicamba	imazaquin	MCPP	MSMA	sethoxydim	2,4-D	2,4-DP
Annual bluegrass	--	--	--	--	--	--	--	--
Annual lespedeza	--	X	--	X	--	--	--	X
Bahiagrass	--	--	--	--	X	X*	--	--
Bittercress	--	X	--	X	--	--	X	X
Common chickweed	X	X	X	X	--	--	--	--
Common greenbrier	--	--	--	--	--	--	--	--
Common woodsorrel	--	X	--	X	X	--	--	X
Cudweed	--	X	--	X	--	--	X	X
Dandelion	--	X	--	X	--	--	X	X
Dichondra	--	X	--	X	--	--	X	X
False dandelion	--	X	--	X	--	--	X	X
Florida betony	--	X	--	--	--	--	--	X
Goosegrass	--	--	--	--	X	X	--	--
Gripeweed	--	--	--	--	--	--	X	X
Henbit	--	X	--	X	--	--	X	X
Large crabgrass	--	--	--	--	X	X	--	--
Lawn burweed	X	X	X	X	--	--	X	X
Pennywort	--	X	--	--	--	--	X	X
Prostrate spurge	--	X	--	X	X	--	X	X
Purple nutsedge	--	--	X	--	X	--	--	--
Virginia buttonweed	--	X*	--	--	--	--	--	X*
Wild garlic	--	X	X	--	--	--	X	X
Wild violets	--	X*	--	--	--	--	--	X*
Yellow nutsedge	X	--	X	--	X	--	--	--

X = Weed controlled by herbicide. * = Suppression only. -- = No control.

Table 3. Landscape Maintenance Herbicides for Home Lawns

CHEMICAL EDGERS AND TOTAL VEGETATION CONTROL PRODUCTS			
Herbicide Trade Name Examples	Application Rate	Site	
BONIDE KLEENUP PLUS FENCE AND YARD EDGER (glyphosate + oxyfluofen)	Ready-to-Use	Non-selective	
ELIMINATOR LIQUID EDGER (cacodylic acid + sodium cacodylate)	Ready-to-Use	Non-selective	
GORDON'S WEED & GRASS KILLER (cacodylic acid + sodium cacodylate)	Ready-to-Use	Non-selective; curbs, sidewalks	
GREEN LIGHT GRASS & WEED KILLER (cacodylic acid + sodium cacodylate)	Ready-to-Use	Non-selective	
GREEN LIGHT LIQUID EDGER (cacodylic acid + sodium cacodylate)	Ready-to-Use	Non-selective	
HI-YIELD LIQUID EDGER (cacodylic acid + sodium cacodylate)	Ready-to-Use	Non-selective; curbs, sidewalks	
ORTHO GROUND CLEAR SUPER PLUS (glyphosate + oxyfluofen)	Ready-to-Use	Non-selective	
ORTHO GROUND CLEAR COMPLETE VEGETATION KILLER (glyphosate + imazapyr)	1 qt./gal./75 sq.ft.	Non-selective	
ORTHO SEASON-LONG GRASS AND WEED KILLER (glyphosate + oxyfluofen)	Ready-to-Use	Non-selective	
NON-SELECTIVE LANDSCAPE MAINTENANCE			
Herbicide Trade Name Examples	Application Rate		
2,4-D + 2,4-DP			
BONIDE BRUSH KILLER, BK 32	3.2 fl.oz./gal. water		
BONIDE BRUSH KILLER, BK 32	RTU		
HI-YIELD BRUSH, VINE, AND POISON IVY KILLER	16 fl. oz./5 gal. water		
diquat + fluazifop + dicamba			
SPECTRACIDE TRIPLE STRIKE GRASS & WEED ROOT KILLER	RTU		
SPECTRACIDE TRIPLE STRIKE GRASS & WEED ROOT KILLER CONCENTRATE	10 fl.oz./gal. water		

continued

NON-SELECTIVE LANDSCAPE MAINTENANCE (cont.)

Herbicide Trade Name Examples	Application Rate
fluazifop	
FERTI-LOME OVER-THE-TOP GRASS KILLER (1.7%)	10 fl.oz./gal./1000 sq.ft.
GORDON'S OVER-THE-TOP GRASS KILLER (1.7%)	10 fl.oz./gal./1000 sq.ft.
GREEN LIGHT BERMUDAGRASS KILLER (1.7%)	10 fl.oz./gal./1000 sq.ft.
ORTHO GRASS-B-GON (0.48%)	RTU
glufosinate-ammonium	
BAYER POWER FORCE GRASS & WEED KILLER CONCENTRATE (5.78%)	3-8 fl.oz./gal. water
BAYER POWER FORCE GRASS & WEED KILLER CONCENTRATE (11.33%)	1.5-4 fl. oz/gal. water
BAYER POWER FORCE GRASS & WEED KILLER (2%)	RTU
glyphosate	
ACE WEED AND GRASS KILLER (1.92%)	RTU
BONIDE KLEENUP SYSTEMIC WEED AND GRASS CONCENTRATE (41%)	1.5-2.5 fl.oz./gal. water
BONIDE KLEENUP WEED & GRASS KILLER (1.92%)	RTU
ELIMINATOR WEED & GRASS KILLER SUPER CONCENTRATE (41%)	1.5-2.5 fl.oz./gal. water/300 sq.ft.
ENFORCER ROOTS AND ALL ULTIMATE LAWN WEED KILLER WITH GLYPHOSATE (1.92%)	RTU
ENFORCER ROOTS AND ALL ULTIMATE CONCENTRATE (27%)	See label.
ENFORCER ROOTS AND ALL ULTIMATE SUPER CONCENTRATE (41%)	1.5-2.5 fl. oz/gal. water
GORDON'S PRONTO FAST-ACTING BRUSH KILLER (32.3%)	3-9 fl. oz/gal. water
GORDON'S PRONTO FAST-ACTING SUPER CONCENTRATE WEED AND GRASS KILLER (50%)	2-3 fl. oz/gal. water
GREEN LIGHT COM-PLEET SYSTEMIC GRASS & WEED KILLER (41%)	1.5-2.5 fl.oz./gal. water
HI-YIELD KILLZALL WEED & GRASS KILLER CONCENTRATE (10%)	4 fl.oz./gal. water
HI-YIELD SUPER CONCENTRATE KILLZALL WEED & GRASS KILLER (41%)	2.5-5 oz./gal. water
MAXIDE WEED AND GRASS KILLER (0.75%)	RTU

continued

NON-SELECTIVE LANDSCAPE MAINTENANCE (cont.)

Herbicide Trade Name Examples	Application Rate
glyphosate (cont.)	
MAXIDE WEED AND GRASS KILLER SUPER CONCENTRATE (41%)	1.5-2.5 fl. oz./gal. water
ROUNDUP POISON IVY & TOUGH BRUSH KILLER (glyphosate 1% and triclopyr 1%)	RTU
ROUNDUP POISON IVY & TOUGH BRUSH KILLER PLUS CONCENTRATE (glyphosate 18% and triclopyr 2%)	6 fl.oz./gal. water
ROUNDUP PRO (41%)	2.5 fl.oz./gal. water
ROUNDUP PRO DRY	1.5 oz./gal. water
ROUNDUP QUICK STIK	See label
ROUNDUP READY-TO-USE WEED & GRASS KILLER (0.96%)	RTU
ROUNDUP SURE SHOT FOAM (0.96%)	RTU
ROUNDUP WEED & GRASS KILLER CONCENTRATE (18%) PLUS DIQUAT	6 fl.oz./gal. water
ROUNDUP WEED & GRASS KILLER SUPER CONCENTRATE (50.2%)	2.5 fl.oz./gal. water
prometon	
BONIDE TOTAL VEGETATION KILLER (2.2%)	1 gal./500 sq.ft.
DRAGON TOTAL VEGETATION KILLER FORMULA II (3.75%)	1 qt./300 sq.ft.
ENFORCER SCORCHER DRY	32 oz./570 sq.ft.
ENFORCER SCORCHER TOTAL VEGETATION KILLER	1 gal./500 sq.ft.
FERTI-LOME PERMA-KILL TOTAL VEGETATION KILLER	1 qt./5 gal water/100 sq.ft.
MAXIDE TOTAL VEGETATION KILLER	1 gal./800 sq. ft.
SPECTRACIDE TOTAL VEGETATION KILLER CONCEN- TRATE (2.5%)	1.25-5 gal./20 gal. water/1000 sq.ft.
sodium chlorate	
FERTI-LOME LIQUID VEGETATION KILLER (25%)	32 fl.oz./gal. water/100 sq.ft.

continued

NON-SELECTIVE LANDSCAPE MAINTENANCE (cont.)

Herbicide Trade Name Examples	Application Rate
triclopyr	
BAYER BRUSH KILLER PLUS CONCENTRATE (8.8%)	8 fl. oz./2 gal. water
BAYER BRUSH KILLER PLUS	RTU
ENFORCER BRUSH KILLER CONCENTRATE (8.8%)	4-8 fl.oz./gal. water
FERTI-LOME BRUSH KILLER/STUMP KILLER (8.8%)	4-8 fl.oz./gal. water
GREEN LIGHT CUT VINE AND STUMP KILLER	RTU
ORTHO BRUSH-B-GON POISON IVY KILLER (8%)	4 fl.oz./gal. water
ORTHO BRUSH-B-GON READY-TO-USE (0.7%)	RTU
SA BRAND BRUSH KILLER (8.8%)	4-8 fl.oz./gal. water
VINE-X VINE AND BRUSH CONTROL (13.6%)	RTU

Table 4. Relative Tolerance of Selected Lawn Grasses to Herbicides

Herbicide	Bermudagrass	Centipedegrass	St. Augustinegrass	Tall fescue	Zoysiagrass
2,4-D amine	Yes	Yes*	Yes*	Yes	Yes
2,4-DP	Yes	Yes*	Yes*	No	Yes
atrazine	Yes*	Yes	Yes	No	Yes*
benefin	Yes	Yes	Yes	No*	Yes
bensulide	Yes	Yes	Yes	Yes	Yes
bentazon	Yes	Yes	Yes	Yes	Yes
dicamba	Yes	Yes*	Yes*	Yes	Yes
dithiopyr	Yes	Yes	Yes	Yes	Yes
glyphosate	No	No	No	No	No
halosulfuron	Yes	Yes	Yes	Yes	Yes
imazaquin	Yes	Yes	Yes	No	Yes
isoxaben	Yes	Yes	Yes	Yes	Yes
MCPP	Yes	Yes	Yes	Yes	Yes
MSMA	Yes	No	No	Yes*	Yes
pendimethalin	Yes	Yes	Yes	No*	Yes
proflaminate	Yes	Yes	Yes	Yes	Yes
sethoxydim	No	Yes	No	No	No
siduron	No	No	No	Yes	No
simazine	No*	Yes	Yes	No	No*

* See label for specific application instructions, rates, and/or timing.

Turf Herbicide Manufacturers and Suppliers

Bayer Advanced LLC
1500 Urban Center Dr.
Birmingham, AL 35242
1-887-229-3724
www.advancedlawn.com/

Bonide Products, Inc.
6301 Sutliff Road
Oriskany, NY 13424
315-736-8231
www.bonideproducts.com/

Enforcer Products Inc.
P.O. Box 1060
Cartersville, GA 30120
770-386-0801
www.enforcer.com/

Green Light Company
P.O. Box 17985
San Antonio, TX 78216
210-494-3481
www.greenlightco.com/

Monsanto Company
Lawn & Garden Products
P.O. Box 1750
Columbus, OH 43216-1750
1-888-295-4120
www.roundup.com/

Ortho Consumer Service
P.O. Box 190
Marysville, OH 43040
1-888-295-0671
www.ortho.com/

PBI/Gordon Corporation
1217 West 12th Street
Kansas City, MO 64101
1-800-821-7925
www.pbigordon.com/

Pennington Seed
P.O. Box 290
Madison, GA 30650
1-800-285-7333
www.penningtonseed.com/
(Eliminator and Maxide brands)

Scotts Consumer Service
14111 Scottslawn Road
Maryville, OH 93041
1-888-270-3714
www.scotts.com/

Southern Ag Insecticides, Inc.
P.O. Box 218
Palmetto, FL 34221
941-722-3285
www.southernag.com/

Spectrum Group
Div. of United Industries Corp.
P.O. Box 15842
St. Louis, MO 63114-0842
1-800-332-5553
www.spectracide.com/

VPG, Inc.
P.O. Box 460
Bonham, TX 75418-5000
903-583-5501
www.v-p-g.com/
(Fertilome, Hi-Yield, and American brands)

“Homeowner Lawns: Chemical Weed Control” prepared by John W. Everest, former *Extension Weed Scientist*, Professor Emeritus and Visiting Professor, Agronomy and Soils, Auburn University; and Michael G. Patterson, *Extension Weed Scientist*, Professor, Agronomy and Soils, Auburn University.

2008IPM-590

For more information, call your county Extension office. It is listed in your telephone directory under your county's name.

Use pesticides **only** according to the directions on the label. Follow all directions, precautions, and restrictions that are listed. Do not use pesticides on plants that are not listed on the label.

The pesticide rates in this publication are recommended **only** if they are registered with the Environmental Protection Agency or the Alabama Department of Agriculture and Industries. If a registration is changed or cancelled, the rate listed here is no longer recommended. Before you apply **any** pesticide, check with your county Extension agent for the latest information.

Trade names are used **only** to give specific information. The Alabama Cooperative Extension System does not endorse or guarantee any product and does not recommend one product instead of another that might be similar.

Issued in furtherance of Cooperative Extension work in agriculture and home economics, Acts of May 8 and June 30, 1914, and other related acts, in cooperation with the U.S. Department of Agriculture. The Alabama Cooperative Extension System (Alabama A&M University and Auburn University) offers educational programs, materials, and equal opportunity employment to all people without regard to race, color, national origin, religion, sex, age, veteran status, or disability.

