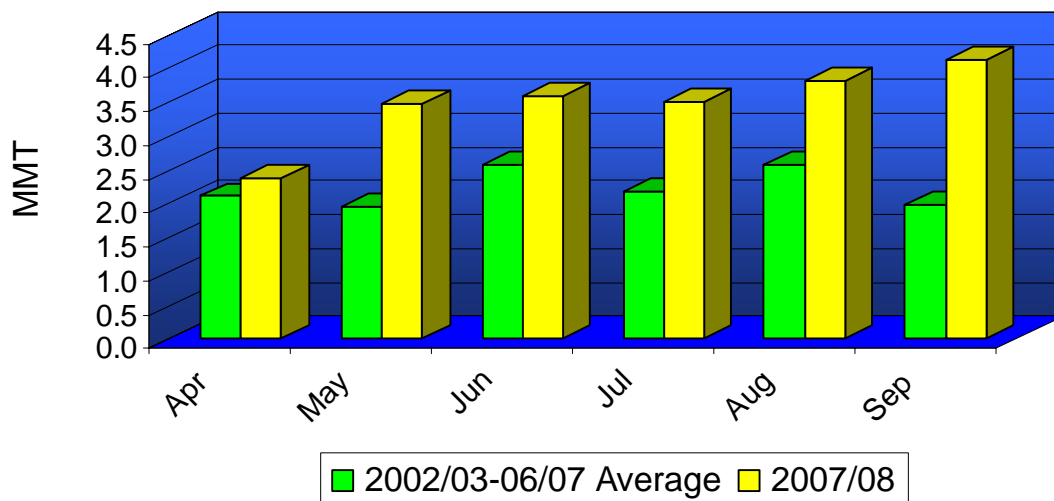




# Oilseeds: World Markets and Trade

## Late Season Buying Surge Results in Record Monthly Chinese Soybean Imports



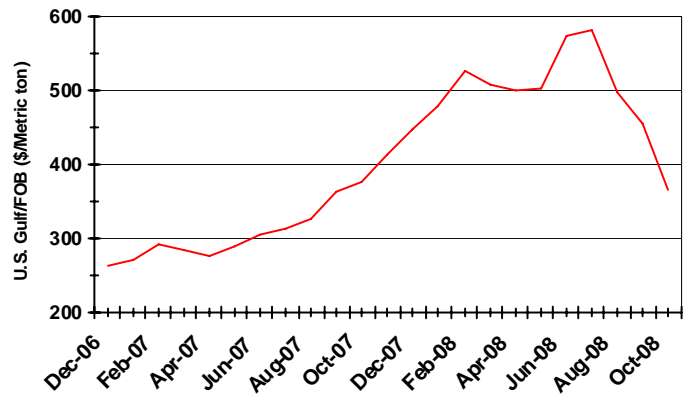
Record soybean imports by China are a product of erratic international prices and a perceived need to expand food security stocks. As a result, imports ended the year at a historic 37.8 million tons, nearly one-third higher than the previous year. Furthermore, there are indications that this late-season surge will carry over into the coming months. For example, the November 4, U.S. Export Sales Report showed China's commitments are already running 25 percent ahead of last year. However, this aggressive pace is expected to slacken later in the year as potentially limited soybean production in South America reduces available supplies.

## **PRICES**

The October U.S. soybean export bids, FOB Gulf, averaged \$366 per ton, down \$88 from September. The sharp drop is attributed to pressure from financial market uncertainty and declining petroleum prices.

U.S. soybean exports for the first 2 months of the current marketing year are strong. The Export Sales report for the week ending October 30 shows total commitments (Outstanding sales plus Accumulated exports) at 15.1 million tons, compared with 13.1 million the same period last year.

## **U.S. Gulf Soybean Export Bids**



## **TRADE CHANGES IN 2008/09**

- Brazil soybean exports are lowered 1.5 million tons to 25.7 million due to a smaller crop prospect. Soybean meal exports are also lowered 300,000 tons to 12.5 million.
- Argentina soybean exports are raised 800,000 tons to 15.2 million in response to lower Brazilian production. Meal exports are reduced as beans are diverted from crush.
- India soybean meal exports are lowered 250,000 tons to 4.5 million due to a larger domestic use.
- EU 27 soybean meal imports are lowered 200,000 tons to 22.8 million due to expected larger supplies of feed grains in the region.
- Argentina soybean oil exports are lowered 155,000 tons to 5.8 million due to a smaller crush prospect.
- EU 27 sunflowerseed exports are lowered 400,000 tons to 325,000 due to abundant supplies in major trading partner countries.
- Ukraine sunflowerseed meal exports are raised 125,000 tons to 1.6 million supported by a record crop and crush.
- U.S. palm oil imports are raised 130,000 tons to 1.1 million tons due to a projected increase in food use.

**Table 01: Major Oilseeds: World Supply and Distribution (Commodity View)**

Million Metric Tons

	2004/05	2005/06	2006/07	2007/08	Oct 2008/09	Nov 2008/09
<b>Production</b>						
Oilseed, Copra	5.59	5.59	5.26	5.70	5.94	5.94
Oilseed, Cottonseed	45.45	43.44	45.83	46.05	43.65	43.37
Oilseed, Palm Kernel	9.54	9.97	10.19	11.11	11.79	11.79
Oilseed, Peanut	33.61	33.07	30.67	31.96	33.37	33.45
Oilseed, Rapeseed	46.09	48.50	45.16	48.43	54.09	54.39
Oilseed, Soybean	215.76	220.53	237.33	220.89	238.21	235.74
Oilseed, Sunflowerseed	25.45	30.04	29.81	27.22	32.07	33.17
<b>Total</b>	<b>381.47</b>	<b>391.13</b>	<b>404.25</b>	<b>391.35</b>	<b>419.11</b>	<b>417.84</b>
<b>Imports</b>						
Oilseed, Copra	0.13	0.07	0.11	0.08	0.08	0.08
Oilseed, Cottonseed	1.00	1.07	0.88	0.80	0.74	0.74
Oilseed, Palm Kernel	0.12	0.15	0.13	0.14	0.13	0.13
Oilseed, Peanut	1.82	1.94	1.96	2.03	1.95	1.92
Oilseed, Rapeseed	5.02	6.71	6.92	7.67	9.15	9.14
Oilseed, Soybean	63.48	64.08	69.05	78.86	77.15	77.11
Oilseed, Sunflowerseed	1.13	1.30	1.68	1.16	1.24	1.17
<b>Total</b>	<b>72.70</b>	<b>75.31</b>	<b>80.73</b>	<b>90.73</b>	<b>90.43</b>	<b>90.29</b>
<b>Exports</b>						
Oilseed, Copra	0.15	0.11	0.12	0.10	0.11	0.11
Oilseed, Cottonseed	1.00	0.99	0.97	0.94	0.69	0.68
Oilseed, Palm Kernel	0.10	0.14	0.13	0.14	0.17	0.17
Oilseed, Peanut	2.31	2.25	2.48	2.38	2.46	2.29
Oilseed, Rapeseed	4.87	6.99	6.64	8.27	9.82	9.67
Oilseed, Soybean	64.79	63.78	71.50	79.43	78.53	77.87
Oilseed, Sunflowerseed	1.22	1.50	1.89	1.48	2.07	1.72
<b>Total</b>	<b>74.44</b>	<b>75.75</b>	<b>83.72</b>	<b>92.74</b>	<b>93.85</b>	<b>92.51</b>
<b>Crush</b>						
Oilseed, Copra	5.54	5.57	5.22	5.58	5.83	5.83
Oilseed, Cottonseed	33.25	32.04	33.91	34.42	34.26	34.15
Oilseed, Palm Kernel	9.48	9.93	10.07	10.88	11.54	11.54
Oilseed, Peanut	15.78	15.37	14.00	14.93	15.28	15.40
Oilseed, Rapeseed	40.60	44.63	43.83	46.44	49.13	49.47
Oilseed, Soybean	175.74	185.21	195.90	201.96	204.88	203.60
Oilseed, Sunflowerseed	22.46	25.93	26.07	24.38	28.00	28.59
<b>Total</b>	<b>302.85</b>	<b>318.69</b>	<b>328.98</b>	<b>338.58</b>	<b>348.92</b>	<b>348.56</b>
<b>Ending Stocks</b>						
Oilseed, Copra	0.09	0.04	0.04	0.11	0.17	0.17
Oilseed, Cottonseed	0.95	1.28	1.10	1.31	0.78	0.82
Oilseed, Palm Kernel	0.18	0.15	0.17	0.25	0.31	0.31
Oilseed, Peanut	1.63	1.83	1.30	0.99	0.97	1.22
Oilseed, Rapeseed	4.75	5.51	4.41	3.24	4.84	4.68
Oilseed, Soybean	47.43	53.08	62.68	53.04	54.34	54.06
Oilseed, Sunflowerseed	2.52	2.83	3.04	2.63	2.69	3.32
<b>Total</b>	<b>57.54</b>	<b>64.71</b>	<b>72.74</b>	<b>61.57</b>	<b>64.10</b>	<b>64.57</b>

Totals may not add due to rounding

**Table 02: Major Protein Meals: World Supply and Distribution (Commodity View)**

Million Metric Tons

	2004/05	2005/06	2006/07	2007/08	Oct 2008/09	Nov 2008/09
<b>Production</b>						
Meal, Copra	1.81	1.82	1.71	1.83	1.90	1.90
Meal, Cottonseed	15.12	14.56	15.43	15.71	15.59	15.54
Meal, Fish	5.70	4.94	5.06	5.10	5.15	5.15
Meal, Palm Kernel	5.00	5.24	5.31	5.76	6.10	6.10
Meal, Peanut	6.09	5.94	5.43	5.81	5.96	6.03
Meal, Rapeseed	24.24	26.50	26.02	27.47	29.08	29.26
Meal, Soybean	138.99	145.86	153.78	158.30	161.58	160.10
Meal, Sunflowerseed	10.02	11.50	11.52	10.72	12.30	12.55
<b>Total</b>	<b>206.97</b>	<b>216.37</b>	<b>224.25</b>	<b>230.69</b>	<b>237.66</b>	<b>236.63</b>
<b>Imports</b>						
Meal, Copra	0.73	0.68	0.62	0.83	0.77	0.77
Meal, Cottonseed	0.40	0.42	0.38	0.39	0.39	0.40
Meal, Fish	3.62	2.92	2.68	2.94	3.14	3.15
Meal, Palm Kernel	3.67	3.77	3.88	4.26	4.12	4.12
Meal, Peanut	0.12	0.20	0.15	0.21	0.16	0.16
Meal, Rapeseed	2.30	2.56	3.04	3.53	3.36	3.45
Meal, Soybean	45.93	51.18	52.49	54.94	55.51	55.13
Meal, Sunflowerseed	2.55	3.23	3.31	3.10	3.35	3.38
<b>Total</b>	<b>59.32</b>	<b>64.95</b>	<b>66.54</b>	<b>70.19</b>	<b>70.80</b>	<b>70.56</b>
<b>Exports</b>						
Meal, Copra	0.74	0.78	0.73	0.77	0.82	0.82
Meal, Cottonseed	0.42	0.40	0.35	0.39	0.38	0.37
Meal, Fish	3.65	2.73	2.59	2.72	2.71	2.71
Meal, Palm Kernel	3.50	3.60	3.89	4.14	4.20	4.20
Meal, Peanut	0.15	0.23	0.17	0.26	0.30	0.27
Meal, Rapeseed	2.51	2.78	2.90	3.78	3.65	3.64
Meal, Soybean	47.21	51.88	54.27	55.31	57.45	56.15
Meal, Sunflowerseed	2.78	3.52	3.48	3.46	3.85	3.98
<b>Total</b>	<b>60.96</b>	<b>65.93</b>	<b>68.38</b>	<b>70.81</b>	<b>73.36</b>	<b>72.13</b>
<b>Domestic Consumption</b>						
Meal, Copra	1.78	1.69	1.62	1.86	1.83	1.83
Meal, Cottonseed	14.99	14.53	15.50	15.79	15.60	15.57
Meal, Fish	5.70	5.13	5.07	5.31	5.55	5.56
Meal, Palm Kernel	5.13	5.30	5.48	5.90	5.90	5.89
Meal, Peanut	6.09	5.91	5.41	5.77	5.82	5.93
Meal, Rapeseed	24.19	26.19	26.37	27.25	28.76	29.05
Meal, Soybean	136.75	145.50	151.82	157.49	159.94	159.39
Meal, Sunflowerseed	9.81	11.12	11.38	10.42	11.76	11.80
<b>Total</b>	<b>204.44</b>	<b>215.37</b>	<b>222.66</b>	<b>229.79</b>	<b>235.14</b>	<b>235.00</b>
<b>Ending Stocks</b>						
Meal, Copra	0.16	0.18	0.16	0.18	0.20	0.20
Meal, Cottonseed	0.20	0.25	0.21	0.13	0.13	0.13
Meal, Fish	0.15	0.15	0.24	0.25	0.28	0.28
Meal, Palm Kernel	0.27	0.38	0.21	0.19	0.29	0.31
Meal, Peanut	0.02	0.01	0.01	0.01	0.01	0.01
Meal, Rapeseed	0.49	0.57	0.35	0.31	0.34	0.35
Meal, Soybean	6.44	6.10	6.28	6.72	6.30	6.42
Meal, Sunflowerseed	0.17	0.26	0.23	0.17	0.17	0.33
<b>Total</b>	<b>7.90</b>	<b>7.92</b>	<b>7.68</b>	<b>7.96</b>	<b>7.72</b>	<b>8.02</b>

Totals may not add due to rounding

**Table 03: Major Vegetable Oils: World Supply and Distribution (Commodity View)**

Million Metric Tons

	2004/05	2005/06	2006/07	2007/08	Oct 2008/09	Nov 2008/09
<b>Production</b>						
Oil, Coconut	3.45	3.47	3.25	3.48	3.62	3.64
Oil, Cottonseed	4.78	4.62	4.86	4.99	4.94	4.92
Oil, Olive	2.96	2.66	2.91	2.84	2.97	2.97
Oil, Palm	33.52	35.97	37.34	41.29	43.20	43.20
Oil, Palm Kernel	4.15	4.38	4.45	4.81	5.10	5.10
Oil, Peanut	5.08	4.95	4.50	4.82	4.93	5.00
Oil, Rapeseed	15.69	17.27	17.14	18.27	19.38	19.38
Oil, Soybean	32.60	34.60	36.32	37.50	38.11	37.81
Oil, Sunflowerseed	9.19	10.56	10.60	9.99	11.45	11.68
<b>Total</b>	<b>111.42</b>	<b>118.47</b>	<b>121.35</b>	<b>127.98</b>	<b>133.71</b>	<b>133.70</b>
<b>Imports</b>						
Oil, Coconut	1.87	1.99	1.89	1.86	1.96	1.95
Oil, Cottonseed	0.10	0.09	0.11	0.10	0.12	0.12
Oil, Olive	0.57	0.58	0.66	0.62	0.70	0.70
Oil, Palm	23.94	26.17	27.40	29.56	30.80	31.11
Oil, Palm Kernel	1.58	1.74	2.08	1.95	2.07	2.04
Oil, Peanut	0.17	0.16	0.18	0.16	0.17	0.17
Oil, Rapeseed	1.20	1.47	2.20	1.95	2.03	2.03
Oil, Soybean	8.91	9.04	9.78	10.34	10.04	9.94
Oil, Sunflowerseed	2.16	3.26	3.33	2.76	3.27	3.38
<b>Total</b>	<b>40.50</b>	<b>44.49</b>	<b>47.61</b>	<b>49.31</b>	<b>51.16</b>	<b>51.44</b>
<b>Exports</b>						
Oil, Coconut	2.04	1.99	1.82	2.03	2.01	1.99
Oil, Cottonseed	0.12	0.11	0.16	0.19	0.15	0.15
Oil, Olive	0.63	0.61	0.70	0.69	0.75	0.75
Oil, Palm	24.55	26.87	26.91	30.37	31.60	31.60
Oil, Palm Kernel	1.92	1.98	2.38	2.39	2.45	2.45
Oil, Peanut	0.18	0.20	0.16	0.18	0.20	0.20
Oil, Rapeseed	1.30	1.74	1.94	1.92	2.10	2.10
Oil, Soybean	9.12	9.83	10.57	10.79	10.52	10.32
Oil, Sunflowerseed	2.63	3.92	3.86	3.54	4.11	4.13
<b>Total</b>	<b>42.49</b>	<b>47.23</b>	<b>48.50</b>	<b>52.08</b>	<b>53.88</b>	<b>53.69</b>
<b>Domestic Consumption</b>						
Oil, Coconut	3.33	3.48	3.35	3.36	3.57	3.59
Oil, Cottonseed	4.66	4.62	4.80	4.95	4.95	4.93
Oil, Olive	2.78	2.71	2.83	2.89	2.92	2.92
Oil, Palm	32.47	35.34	37.70	39.98	41.97	42.15
Oil, Palm Kernel	3.80	4.03	4.31	4.31	4.62	4.59
Oil, Peanut	5.07	4.99	4.59	4.80	4.90	4.97
Oil, Rapeseed	15.52	16.88	17.52	18.34	19.29	19.29
Oil, Soybean	31.70	33.55	35.67	37.43	37.84	37.75
Oil, Sunflowerseed	8.54	9.83	10.36	9.23	10.57	10.56
<b>Total</b>	<b>107.86</b>	<b>115.42</b>	<b>121.13</b>	<b>125.29</b>	<b>130.63</b>	<b>130.74</b>
<b>Ending Stocks</b>						
Oil, Coconut	0.36	0.36	0.33	0.28	0.28	0.29
Oil, Cottonseed	0.21	0.19	0.20	0.16	0.11	0.11
Oil, Olive	1.23	1.15	1.18	1.06	1.06	1.06
Oil, Palm	3.55	3.48	3.61	4.11	4.55	4.67
Oil, Palm Kernel	0.40	0.50	0.34	0.40	0.50	0.50
Oil, Peanut	0.22	0.14	0.06	0.07	0.07	0.08
Oil, Rapeseed	0.46	0.58	0.46	0.42	0.43	0.44
Oil, Soybean	3.10	3.37	3.22	2.85	2.48	2.53
Oil, Sunflowerseed	0.75	0.81	0.51	0.49	0.47	0.86
<b>Total</b>	<b>10.27</b>	<b>10.58</b>	<b>9.92</b>	<b>9.83</b>	<b>9.95</b>	<b>10.53</b>

Totals may not add due to rounding

**Table 04: Major Oilseeds: World Supply and Distribution (Country View)**

Million Metric Tons

	2004/05	2005/06	2006/07	2007/08	Oct 2008/09	Nov 2008/09
<b>Production</b>						
United States	95.94	95.53	96.61	82.44	88.68	88.17
Brazil	55.58	59.13	62.01	64.12	65.27	62.71
China, Peoples Republic	58.35	56.80	55.23	53.35	56.90	57.50
Argentina	43.43	45.03	53.16	51.70	55.86	55.86
India	29.40	30.70	29.92	33.88	33.95	33.95
Other	98.77	103.93	107.32	105.86	118.46	119.66
<b>Total</b>	<b>381.47</b>	<b>391.13</b>	<b>404.25</b>	<b>391.35</b>	<b>419.11</b>	<b>417.84</b>
<b>Imports</b>						
China, Peoples Republic	26.12	29.00	29.70	38.63	36.71	36.66
EU-27	16.00	15.92	17.18	17.02	17.28	17.26
Japan	6.82	6.55	6.54	6.52	6.64	6.62
Mexico	5.11	5.48	5.42	5.37	5.27	5.22
Argentina	0.71	0.61	2.01	3.02	3.37	3.42
Taiwan	2.27	2.51	2.44	2.31	2.36	2.36
Turkey	1.53	1.62	1.74	2.04	2.02	2.03
Thailand	1.56	1.52	1.58	1.66	1.69	1.71
Indonesia	1.26	1.38	1.52	1.44	1.48	1.47
Korea, Republic of	1.41	1.37	1.41	1.38	1.41	1.41
Other	9.91	9.37	11.19	11.35	12.21	12.15
<b>Total</b>	<b>72.70</b>	<b>75.31</b>	<b>80.73</b>	<b>90.73</b>	<b>90.43</b>	<b>90.29</b>
<b>Exports</b>						
United States	30.71	26.61	31.65	33.12	28.97	28.97
Brazil	20.24	25.99	23.65	25.54	27.37	25.87
Argentina	10.08	7.83	10.23	14.47	15.00	15.81
Canada	4.65	6.78	7.26	7.63	7.17	7.15
Paraguay	2.91	2.37	4.56	5.26	5.62	5.62
Ukraine	0.13	0.63	1.24	1.17	2.83	2.83
China, Peoples Republic	1.55	1.26	1.44	1.32	1.27	1.30
Other	4.18	4.29	3.69	4.24	5.63	4.97
<b>Total</b>	<b>74.44</b>	<b>75.75</b>	<b>83.72</b>	<b>92.74</b>	<b>93.85</b>	<b>92.51</b>
<b>Crush</b>						
China, Peoples Republic	60.54	64.97	65.28	68.47	70.99	71.43
United States	50.17	51.90	53.48	53.44	52.26	51.83
Argentina	31.41	35.93	36.95	39.43	41.87	41.06
EU-27	33.38	34.23	36.35	38.07	38.86	39.09
Brazil	31.34	30.01	33.47	34.46	34.87	34.43
India	23.57	25.10	24.62	27.52	27.97	27.97
Russian Federation	5.15	6.51	7.16	6.64	7.57	7.72
Indonesia	5.15	5.58	5.74	6.09	6.69	6.69
Ukraine	3.34	4.98	5.39	4.69	5.81	6.21
Canada	4.58	4.92	5.10	5.41	5.69	5.69
Mexico	5.51	5.85	5.75	5.70	5.60	5.60
Japan	5.42	5.12	5.17	5.17	5.18	5.18
Pakistan	5.41	5.08	5.51	4.54	5.17	5.17
Malaysia	4.65	4.73	4.41	4.90	4.96	4.96
Turkey	2.87	2.84	3.08	3.12	2.97	2.99
Other	30.38	30.95	31.54	30.95	32.47	32.55
<b>Total</b>	<b>302.85</b>	<b>318.69</b>	<b>328.98</b>	<b>338.58</b>	<b>348.92</b>	<b>348.56</b>
<b>Ending Stocks</b>						
Argentina	17.69	18.02	24.40	23.57	24.52	24.28
Brazil	16.68	16.67	18.32	19.23	19.01	18.44
United States	8.29	14.20	17.02	6.91	6.93	6.97
China, Peoples Republic	4.70	4.57	2.70	4.24	3.89	4.72
Canada	2.25	2.69	2.50	1.61	2.85	2.75
Other	7.92	8.55	7.79	6.01	6.90	7.41
<b>Total</b>	<b>57.54</b>	<b>64.71</b>	<b>72.74</b>	<b>61.57</b>	<b>64.10</b>	<b>64.57</b>

Major Oilseeds includes Copra, Cottonseed, Palm Kernel, Peanut, Rapeseed, Soybeans and Sunflowerseeds.

**Table 05: Major Protein Meals: World Supply and Distribution (Country View)**

Million Metric Tons

	2004/05	2005/06	2006/07	2007/08	Oct 2008/09	Nov 2008/09
<b>Production</b>						
China, Peoples Republic	39.69	43.18	43.18	45.68	47.83	47.81
United States	39.27	39.95	41.52	40.85	40.43	40.11
Argentina	23.35	26.75	27.51	29.13	31.12	30.38
Brazil	23.71	22.76	25.26	26.02	26.35	26.02
EU-27	22.48	22.85	24.30	25.37	25.52	25.68
Other	58.47	60.87	62.50	63.65	66.41	66.64
<b>Total</b>	206.97	216.37	224.25	230.69	237.66	236.63
<b>Imports</b>						
EU-27	27.29	28.30	26.97	28.52	27.81	27.71
Korea, Republic of	2.70	2.95	3.11	3.34	3.36	3.33
Vietnam	1.34	1.92	2.62	2.75	3.01	2.91
Thailand	2.09	2.44	2.72	2.39	2.70	2.70
Indonesia	2.02	2.24	2.41	2.61	2.66	2.67
Japan	1.95	2.06	2.19	2.20	2.22	2.22
United States	1.53	1.65	1.70	2.02	2.07	2.07
Other	20.41	23.40	24.83	26.36	26.97	26.95
<b>Total</b>	59.32	64.95	66.54	70.19	70.80	70.56
<b>Exports</b>						
Argentina	21.79	25.20	26.41	27.73	29.70	28.94
Brazil	14.26	12.91	12.72	12.14	12.80	12.50
United States	6.95	7.61	8.26	8.69	8.13	8.13
India	2.72	4.69	4.44	6.10	5.67	5.42
Indonesia	1.84	1.99	2.10	2.24	2.40	2.40
Malaysia	1.93	1.82	2.01	2.12	2.07	2.07
Canada	1.50	1.63	1.63	2.00	2.07	2.07
Other	9.98	10.08	10.81	9.80	10.53	10.60
<b>Total</b>	60.96	65.93	68.38	70.81	73.36	72.13
<b>Domestic Consumption</b>						
EU-27	48.83	49.98	50.41	52.88	52.48	52.57
China, Peoples Republic	40.67	44.81	43.58	46.70	48.84	48.82
United States	33.90	33.85	34.93	34.24	34.37	34.04
Brazil	9.93	10.15	12.27	13.26	13.97	13.94
India	9.60	9.82	10.07	10.10	10.42	10.63
Japan	6.00	5.90	6.02	6.05	6.04	6.04
Mexico	5.32	6.01	6.05	5.67	5.75	5.75
Thailand	3.79	4.06	4.34	4.12	4.38	4.38
Korea, Republic of	3.49	3.64	3.95	4.15	4.15	4.13
Russian Federation	2.40	2.70	3.11	3.28	3.45	3.46
Other	40.51	44.45	47.92	49.35	51.30	51.25
<b>Total</b>	204.44	215.37	222.66	229.79	235.14	235.00
<b>SME</b>						
EU-27	44.85	45.79	46.39	48.42	47.80	47.89
China, Peoples Republic	38.75	42.56	41.40	44.73	46.94	46.87
United States	33.23	33.15	34.25	33.46	33.59	33.26
Brazil	9.76	10.00	12.06	13.04	13.76	13.73
India	8.34	8.47	8.67	8.85	9.01	9.22
Japan	5.91	5.82	5.93	5.96	5.95	5.95
Mexico	5.05	5.68	5.76	5.35	5.43	5.43
Other	47.19	51.63	55.52	56.80	59.14	59.07
<b>Total</b>	193.07	203.11	209.98	216.61	221.62	221.42
<b>Ending Stocks</b>						
Brazil	1.58	1.48	1.93	2.73	2.50	2.49
Argentina	1.47	1.80	1.61	1.64	1.70	1.64
EU-27	1.09	1.11	1.06	1.26	1.05	1.25
United States	0.22	0.36	0.39	0.33	0.33	0.33
Malaysia	0.30	0.43	0.26	0.19	0.25	0.27
Other	3.25	2.73	2.44	1.81	1.90	2.04
<b>Total</b>	7.90	7.92	7.68	7.96	7.72	8.02

Major Protein Meals include Copra, Cottonseed, Fish, Palm Kernel, Peanut, Rapeseed, Soybean, and Sunflower Meal.

**Table 06: Major Vegetable Oils: World Supply and Distribution (Country View)**

Million Metric Tons

	2004/05	2005/06	2006/07	2007/08	Oct 2008/09	Nov 2008/09
<b>Production</b>						
Indonesia	16.05	18.26	19.37	21.24	22.92	22.92
Malaysia	17.15	17.50	17.20	19.70	19.86	19.86
China, Peoples Republic	13.81	14.76	14.17	14.59	15.30	15.29
EU-27	12.61	12.80	13.67	14.28	15.03	15.09
United States	9.76	10.39	10.41	10.51	10.28	10.19
Argentina	6.81	7.63	7.71	8.57	9.02	8.86
India	6.47	6.80	6.43	6.99	7.10	7.10
Other	28.77	30.34	32.38	32.10	34.21	34.40
<b>Total</b>	<b>111.42</b>	<b>118.47</b>	<b>121.35</b>	<b>127.98</b>	<b>133.71</b>	<b>133.70</b>
<b>Imports</b>						
China, Peoples Republic	6.69	6.96	8.50	8.76	9.32	9.19
EU-27	6.80	8.21	9.00	7.88	7.92	7.92
India	5.67	4.91	5.53	5.39	5.76	5.76
United States	1.83	2.39	2.53	3.13	3.28	3.41
Pakistan	1.63	1.72	2.25	2.47	2.55	2.55
Egypt	0.99	1.23	1.21	1.39	1.55	1.53
Bangladesh	0.99	1.12	1.29	1.36	1.45	1.45
Iran	1.16	1.19	1.23	1.28	1.34	1.37
Malaysia	0.76	1.24	0.86	1.01	0.96	0.96
Russian Federation	0.96	0.87	0.84	1.18	0.91	0.91
Other	13.01	14.67	14.39	15.47	16.13	16.40
<b>Total</b>	<b>40.50</b>	<b>44.49</b>	<b>47.61</b>	<b>49.31</b>	<b>51.16</b>	<b>51.44</b>
<b>Exports</b>						
Indonesia	11.41	13.35	13.48	15.63	16.75	16.75
Malaysia	13.68	13.90	14.10	15.35	15.30	15.28
Argentina	5.99	6.89	6.87	7.20	7.40	7.25
Brazil	2.55	2.55	2.52	2.46	2.36	2.35
Ukraine	0.74	1.61	1.89	1.35	1.65	1.65
Canada	0.98	1.12	1.29	1.38	1.43	1.43
United States	0.84	0.90	1.34	1.68	1.35	1.33
Other	6.30	6.92	7.00	7.04	7.65	7.67
<b>Total</b>	<b>42.49</b>	<b>47.23</b>	<b>48.50</b>	<b>52.08</b>	<b>53.88</b>	<b>53.69</b>
<b>Domestic Consumption</b>						
China, Peoples Republic	20.53	21.51	22.47	23.25	24.47	24.33
EU-27	17.92	20.13	21.72	21.43	21.82	21.73
India	11.57	12.11	11.96	12.48	12.77	12.77
United States	10.45	11.16	11.68	12.19	12.41	12.53
Indonesia	4.98	5.37	5.45	5.62	6.03	6.03
Malaysia	4.01	4.35	4.62	4.74	5.21	5.23
Brazil	3.60	3.67	4.23	4.59	4.76	4.77
Pakistan	2.44	2.58	3.32	3.43	3.66	3.65
Russian Federation	2.70	2.71	2.83	3.16	3.20	3.20
Japan	2.26	2.19	2.19	2.23	2.27	2.25
Mexico	1.91	1.99	2.01	2.11	2.12	2.12
Turkey	1.54	1.82	1.60	1.72	1.86	1.87
Egypt	1.18	1.39	1.52	1.51	1.80	1.69
Bangladesh	1.14	1.23	1.44	1.53	1.63	1.63
Argentina	0.77	0.80	1.00	1.40	1.59	1.59
Other	20.85	22.44	23.10	23.90	25.04	25.35
<b>Total</b>	<b>107.86</b>	<b>115.42</b>	<b>121.13</b>	<b>125.29</b>	<b>130.63</b>	<b>130.74</b>
<b>Ending Stocks</b>						
Malaysia	1.79	2.27	1.60	2.23	2.53	2.53
EU-27	2.03	1.96	1.88	1.47	1.52	1.65
Indonesia	1.11	0.72	1.22	1.25	1.42	1.44
United States	1.09	1.82	1.74	1.51	1.27	1.26
Argentina	0.64	0.58	0.42	0.39	0.42	0.42
Other	3.61	3.24	3.06	2.98	2.78	3.23
<b>Total</b>	<b>10.27</b>	<b>10.58</b>	<b>9.92</b>	<b>9.83</b>	<b>9.95</b>	<b>10.53</b>

Major Vegetable Oils includes Coconut, Cottonseed, Olive, Palm, Palm Kernel, Peanut, Rapeseed, Soybean, and Sunflowerseed oil.



**Table 07: Soybeans: World Supply and Distribution**  
**Thousand Metric Tons**

	2004/05	2005/06	2006/07	2007/08	Oct 2008/09	Nov 2008/09
<b>Production</b>						
United States	85,013	83,368	86,770	72,824	79,968	79,486
Brazil	53,000	57,000	59,000	61,000	62,500	60,000
Argentina	39,000	40,500	48,800	46,200	50,500	50,500
China, Peoples Republic	17,400	16,350	15,967	14,000	16,500	16,800
India	5,850	7,000	7,690	9,300	9,200	9,200
Paraguay	4,040	3,640	6,200	6,800	7,200	7,200
Canada	3,042	3,161	3,460	2,700	3,240	3,240
Other	8,413	9,512	9,441	8,066	9,105	9,315
<b>Total</b>	<b>215,758</b>	<b>220,531</b>	<b>237,328</b>	<b>220,890</b>	<b>238,213</b>	<b>235,741</b>
<b>Imports</b>						
China, Peoples Republic	25,802	28,317	28,726	37,812	36,000	36,000
EU-27	14,539	13,937	15,291	15,100	14,150	14,150
Japan	4,295	3,962	4,094	4,013	4,050	4,050
Mexico	3,640	3,667	3,844	3,650	3,635	3,585
Argentina	692	584	1,986	3,000	3,350	3,400
Taiwan	2,256	2,498	2,436	2,300	2,350	2,350
Thailand	1,517	1,473	1,532	1,600	1,650	1,650
Indonesia	1,112	1,187	1,309	1,200	1,300	1,300
Korea, Republic of	1,240	1,190	1,231	1,231	1,260	1,260
Egypt	762	776	1,325	1,150	1,250	1,250
Other	7,629	6,489	7,280	7,803	8,158	8,113
<b>Total</b>	<b>63,484</b>	<b>64,080</b>	<b>69,054</b>	<b>78,859</b>	<b>77,153</b>	<b>77,108</b>
<b>Exports</b>						
United States	29,860	25,579	30,386	31,598	27,760	27,760
Brazil	20,137	25,911	23,485	25,364	27,200	25,700
Argentina	9,568	7,249	9,559	13,782	14,400	15,200
Paraguay	2,888	2,315	4,500	5,080	5,400	5,400
Canada	1,124	1,318	1,683	1,775	1,790	1,790
Other	1,210	1,408	1,889	1,827	1,976	2,021
<b>Total</b>	<b>64,787</b>	<b>63,780</b>	<b>71,502</b>	<b>79,426</b>	<b>78,526</b>	<b>77,871</b>
<b>Crush</b>						
United States	46,160	47,324	49,198	49,024	47,900	47,491
China, Peoples Republic	30,362	34,500	35,970	39,518	41,220	41,474
Argentina	27,313	31,888	33,586	34,607	37,000	36,200
Brazil	29,344	28,285	31,109	32,016	32,500	32,100
EU-27	14,350	13,670	14,670	14,870	13,550	13,650
India	5,030	5,990	6,615	7,998	7,900	7,900
Mexico	3,729	3,823	3,900	3,700	3,700	3,700
Japan	3,149	2,820	2,925	2,890	2,840	2,840
Taiwan	2,013	2,190	2,161	2,050	2,075	2,075
Paraguay	979	1,220	1,550	1,610	1,650	1,650
Canada	1,545	1,497	1,524	1,410	1,500	1,500
Thailand	1,500	1,413	1,406	1,390	1,400	1,400
Bolivia	1,815	1,843	1,670	1,050	1,350	1,350
Egypt	721	800	1,250	1,200	1,250	1,250
Iran	1,129	1,254	1,000	1,250	1,250	1,250
Other	6,600	6,695	7,364	7,378	7,792	7,769
<b>Total</b>	<b>175,739</b>	<b>185,212</b>	<b>195,898</b>	<b>201,961</b>	<b>204,877</b>	<b>203,599</b>
<b>Ending Stocks</b>						
Argentina	15,976	16,473	22,606	21,861	23,052	22,773
Brazil	16,658	16,641	18,190	19,000	18,950	18,350
United States	6,960	12,229	15,617	5,580	5,583	5,577
China, Peoples Republic	4,700	4,573	2,700	4,244	3,886	4,720
EU-27	757	733	1,118	796	1,046	806
Other	2,376	2,428	2,445	1,561	1,825	1,837
<b>Total</b>	<b>47,427</b>	<b>53,077</b>	<b>62,676</b>	<b>53,042</b>	<b>54,342</b>	<b>54,063</b>

Most countries are on an October/September Marketing Year (MY). The United States, Mexico, and Thailand are on a September/August MY. Canada is on an August/July MY. Paraguay is on a March/February MY and Turkey is on an March/February MY.

**Table 08: Soybean Meal: World Supply and Distribution**

Thousand Metric Tons

	2004/05	2005/06	2006/07	2007/08	Oct 2008/09	Nov 2008/09
<b>Production</b>						
United States	36,936	37,416	39,058	38,322	37,952	37,640
China, Peoples Republic	24,026	27,296	28,090	30,860	32,600	32,390
Argentina	21,601	25,012	26,061	27,070	29,045	28,310
Brazil	22,740	21,920	24,110	24,820	25,190	24,880
EU-27	11,300	10,760	11,550	11,715	10,670	10,750
India	4,015	4,782	5,280	6,385	6,305	6,305
Mexico	2,958	3,030	3,095	2,935	2,935	2,935
Other	15,415	15,645	16,540	16,188	16,887	16,892
<b>Total</b>	<b>138,991</b>	<b>145,861</b>	<b>153,784</b>	<b>158,295</b>	<b>161,584</b>	<b>160,102</b>
<b>Imports</b>						
EU-27	21,910	22,829	22,176	23,900	23,000	22,800
Vietnam	1,152	1,722	2,273	2,400	2,600	2,550
Indonesia	1,849	2,071	2,237	2,400	2,450	2,450
Thailand	1,779	2,052	2,275	1,917	2,200	2,200
Korea, Republic of	1,462	1,773	1,870	1,760	1,850	1,800
Japan	1,503	1,601	1,737	1,747	1,760	1,760
Mexico	1,251	1,728	1,780	1,475	1,600	1,600
Canada	1,160	1,353	1,453	1,510	1,560	1,560
Philippines	1,377	1,374	1,357	1,450	1,500	1,500
Malaysia	677	779	899	930	1,035	1,035
Other	11,805	13,900	14,437	15,447	15,956	15,879
<b>Total</b>	<b>45,925</b>	<b>51,182</b>	<b>52,494</b>	<b>54,936</b>	<b>55,511</b>	<b>55,134</b>
<b>Exports</b>						
Argentina	20,650	24,197	25,625	26,420	28,400	27,660
Brazil	14,256	12,895	12,715	12,138	12,800	12,500
United States	6,659	7,301	7,987	8,346	7,802	7,802
India	1,794	3,679	3,461	4,790	4,700	4,450
Paraguay	644	797	1,128	1,112	1,147	1,147
Other	3,210	3,015	3,357	2,499	2,597	2,589
<b>Total</b>	<b>47,213</b>	<b>51,884</b>	<b>54,273</b>	<b>55,305</b>	<b>57,446</b>	<b>56,148</b>
<b>Domestic Consumption</b>						
EU-27	32,680	32,875	33,192	34,992	33,342	33,315
China, Peoples Republic	23,437	27,776	27,255	30,429	32,200	31,990
United States	30,446	30,114	31,184	30,150	30,300	29,983
Brazil	8,960	9,328	11,118	12,050	12,800	12,790
Mexico	4,208	4,751	4,871	4,400	4,525	4,525
Japan	3,978	3,846	3,992	4,007	3,976	3,976
Thailand	2,985	3,196	3,352	3,117	3,310	3,310
Canada	2,318	2,400	2,479	2,521	2,590	2,590
Vietnam	1,152	1,722	2,273	2,400	2,600	2,550
Korea, Republic of	2,196	2,381	2,661	2,515	2,585	2,536
Indonesia	1,839	2,085	2,236	2,390	2,443	2,443
Iran	1,113	1,504	1,612	1,874	1,924	1,894
India	1,426	1,525	1,852	1,920	1,627	1,840
Taiwan	1,705	1,800	1,750	1,618	1,640	1,640
Philippines	1,407	1,500	1,503	1,541	1,592	1,592
Other	16,898	18,700	20,494	21,568	22,483	22,414
<b>Total</b>	<b>136,748</b>	<b>145,503</b>	<b>151,824</b>	<b>157,492</b>	<b>159,937</b>	<b>159,388</b>
<b>Ending Stocks</b>						
Brazil	1,577	1,469	1,913	2,718	2,488	2,483
Argentina	1,423	1,672	1,517	1,547	1,615	1,545
EU-27	859	872	859	1,065	834	950
United States	156	285	314	267	272	272
Korea, Republic of	188	275	203	180	180	180
Other	2,241	1,527	1,475	938	912	985
<b>Total</b>	<b>6,444</b>	<b>6,100</b>	<b>6,281</b>	<b>6,715</b>	<b>6,301</b>	<b>6,415</b>

Most countries are on an October/September Marketing Year (MY). The Mexico and Thailand are on a September/August MY. Canada is on an August/July MY. Paraguay is on a March/February MY. Vietnam and the Philippines are on a January/December MY and Bolivia is on a March/February MY.

**Table 09: Soybean Oil: World Supply and Distribution**  
**Thousand Metric Tons**

	2004/05	2005/06	2006/07	2007/08	Oct 2008/09	Nov 2008/09
<b>Production</b>						
United States	8,782	9,248	9,294	9,329	9,101	9,024
China, Peoples Republic	5,421	6,149	6,340	6,966	7,355	7,355
Argentina	5,128	5,998	6,424	6,627	7,075	6,920
Brazil	5,630	5,430	5,970	6,150	6,240	6,160
EU-27	2,575	2,460	2,640	2,667	2,435	2,456
India	900	1,070	1,180	1,426	1,410	1,410
Mexico	635	657	685	650	645	645
Other	3,531	3,591	3,785	3,688	3,853	3,838
<b>Total</b>	<b>32,602</b>	<b>34,603</b>	<b>36,318</b>	<b>37,503</b>	<b>38,114</b>	<b>37,808</b>
<b>Imports</b>						
China, Peoples Republic	1,728	1,516	2,404	2,726	2,500	2,500
India	2,026	1,727	1,403	700	900	900
EU-27	181	717	977	950	720	720
Iran	741	600	606	660	670	670
Morocco	318	372	360	420	425	425
Venezuela	247	285	351	370	380	380
Bangladesh	228	262	327	347	367	367
Algeria	299	293	271	350	325	325
Korea, Republic of	244	265	302	296	310	310
Peru	263	302	300	305	310	310
Other	2,632	2,704	2,474	3,218	3,136	3,036
<b>Total</b>	<b>8,907</b>	<b>9,043</b>	<b>9,775</b>	<b>10,342</b>	<b>10,043</b>	<b>9,943</b>
<b>Exports</b>						
Argentina	4,757	5,597	5,970	5,670	5,900	5,750
Brazil	2,414	2,466	2,462	2,388	2,300	2,300
United States	600	523	851	1,349	1,066	1,043
Paraguay	112	195	258	262	265	265
EU-27	525	269	243	340	250	250
Bolivia	238	244	230	170	174	174
Iran	90	75	85	80	80	80
Other	380	460	471	527	483	462
<b>Total</b>	<b>9,116</b>	<b>9,829</b>	<b>10,570</b>	<b>10,786</b>	<b>10,518</b>	<b>10,324</b>
<b>Domestic Consumption</b>						
China, Peoples Republic	7,203	7,607	8,600	9,613	9,735	9,735
United States	7,911	8,147	8,426	8,288	8,210	8,210
Brazil	3,130	3,133	3,510	3,802	4,012	3,962
EU-27	2,210	2,915	3,368	3,287	2,942	2,963
India	2,627	2,938	2,598	2,236	2,300	2,300
Argentina	396	397	569	982	1,152	1,150
Mexico	781	779	820	875	873	873
Iran	804	775	725	800	820	820
Japan	639	573	577	573	588	574
Egypt	303	351	384	510	576	511
Morocco	429	444	446	490	510	510
Korea, Republic of	406	418	448	459	477	476
Taiwan	405	396	395	410	415	415
Bangladesh	275	276	342	374	394	394
Venezuela	249	295	355	376	385	385
Other	3,927	4,108	4,106	4,352	4,448	4,469
<b>Total</b>	<b>31,695</b>	<b>33,552</b>	<b>35,669</b>	<b>37,427</b>	<b>37,837</b>	<b>37,747</b>
<b>Ending Stocks</b>						
United States	771	1,365	1,399	1,120	925	914
Argentina	486	490	375	350	372	370
Brazil	454	313	315	345	343	313
China, Peoples Republic	247	200	250	227	277	277
EU-27	201	194	200	190	153	153
Other	942	804	681	620	409	505
<b>Total</b>	<b>3,101</b>	<b>3,366</b>	<b>3,220</b>	<b>2,852</b>	<b>2,479</b>	<b>2,532</b>

Most countries are on an October/September Marketing Year (MY). Mexico is on a September/August MY. Peru is on an January/December MY and Paraguay and Bolivia are on a March/February MY.

**Table 10: Soybeans and Products: World Trade**  
**Thousand Metric Tons**

Marketing Year	Meal, Soybean			Oil, Soybean			Oilseed, Soybean			
	2006/07	2007/08	2008/09	2006/07	2007/08	2008/09	2006/07	2007/08	2008/09	
<b>Exports</b>										
North America		8,129	8,494	7,961	875	1,399	1,068	32,069	33,373	29,550
Canada	(Aug-Jul)	137	140	150	24	50	25	1,683	1,775	1,790
United States	(Sep-Aug)	7,987	8,346	7,802	851	1,349	1,043	30,386	31,598	27,760
South America		40,787	40,500	42,322	8,927	8,498	8,494	38,445	45,305	47,538
Argentina	(Oct-Sep)	25,625	26,420	27,660	5,970	5,670	5,750	9,559	13,782	15,200
Brazil	(Oct-Sep)	12,715	12,138	12,500	2,462	2,388	2,300	23,485	25,364	25,700
Paraguay	(Mar-Feb)	1,128	1,112	1,147	258	262	265	4,500	5,080	5,400
South Asia		3,462	4,791	4,450	10	10	10	0	5	5
India	(Oct-Sep)	3,461	4,790	4,450	10	10	10	7	5	5
Other		1,895	1,520	1,415	758	879	752	988	743	778
<b>World Total</b>		<b>54,273</b>	<b>55,305</b>	<b>56,148</b>	<b>10,570</b>	<b>10,786</b>	<b>10,324</b>	<b>71,502</b>	<b>79,426</b>	<b>77,871</b>
<b>Imports</b>										
European Union		0	23,900	22,800	0	950	720	0	15,100	14,150
East Asia		3,716	3,742	3,793	2,871	3,203	3,030	36,529	45,396	43,705
China, Peoples Republic of	(Oct-Sep)	32	203	200	2,404	2,726	2,500	28,726	37,812	36,000
Japan	(Oct-Sep)	1,737	1,747	1,760	50	42	55	4,094	4,013	4,050
Korea, Republic of	(Oct-Sep)	1,870	1,760	1,800	302	296	310	1,231	1,231	1,260
Taiwan	(Oct-Sep)	67	26	25	11	50	60	2,436	2,300	2,350
Southeast Asia		9,060	9,117	9,756	241	253	267	3,545	3,500	3,740
Indonesia	(Oct-Sep)	2,237	2,400	2,450	18	18	17	1,309	1,200	1,300
Malaysia	(Oct-Sep)	899	930	1,035	112	120	125	444	470	520
Philippines	(Jan-Dec)	1,357	1,450	1,500	12	5	7	167	100	130
Thailand	(Sep-Aug)	2,275	1,917	2,200	0	0	0	1,532	1,600	1,650
Vietnam	(Jan-Dec)	2,273	2,400	2,550	64	75	80	74	110	120
North America		3,375	3,112	3,310	233	339	330	4,324	4,224	4,126
Canada	(Aug-Jul)	1,453	1,510	1,560	79	80	82	234	305	350
Mexico	(Sep-Aug)	1,780	1,475	1,600	137	230	225	3,844	3,650	3,585
South America		3,862	4,212	4,380	970	1,076	1,095	2,929	4,057	4,438
Brazil	(Oct-Sep)	167	173	175	4	70	70	53	145	150
Colombia	(Oct-Sep)	741	850	875	177	190	190	338	320	375
Central America		819	868	885	174	160	180	0	269	304
Caribbean		828	880	875	263	287	293	0	152	175
Middle East		2,520	2,993	3,001	4	783	816	3,371	3,475	3,680
Iran	(Oct-Sep)	817	880	900	606	660	670	792	1,050	1,050
Israel	(Oct-Sep)	70	130	110	15	13	15	450	500	550
Syria	(Jan-Dec)	365	410	411	3	3	4	383	425	430
Turkey	(Nov-Oct)	339	385	400	20	40	45	1,172	1,200	1,200
North Africa		1,781	1,740	1,895	890	1,410	1,200	1,769	1,550	1,700
Egypt	(Oct-Sep)	423	300	400	124	440	250	1,325	1,150	1,250
Other		26,533	4,372	4,439	4,129	1,881	2,012	16,587	1,136	1,090
<b>World Total</b>		<b>52,494</b>	<b>54,936</b>	<b>55,134</b>	<b>9,775</b>	<b>10,342</b>	<b>9,943</b>	<b>69,054</b>	<b>78,859</b>	<b>77,108</b>

**Table 11: Palm Oil: World Supply and Distribution**

Thousand Metric Tons

	2004/05	2005/06	2006/07	2007/08	Oct 2008/09	Nov 2008/09
<b>Production</b>						
Indonesia	13,560	15,560	16,600	18,300	19,700	19,700
Malaysia	15,194	15,485	15,290	17,567	17,700	17,700
Thailand	820	784	1,170	1,050	1,400	1,400
Colombia	647	690	770	830	830	830
Nigeria	790	800	810	820	820	820
Other	2,509	2,652	2,697	2,722	2,752	2,752
<b>Total</b>	<b>33,520</b>	<b>35,971</b>	<b>37,337</b>	<b>41,289</b>	<b>43,202</b>	<b>43,202</b>
<b>Imports</b>						
China, Peoples Republic	4,363	4,975	5,139	5,228	5,900	5,800
India	3,525	2,899	3,800	4,532	4,600	4,600
EU-27	4,028	4,272	4,347	4,000	3,950	3,950
Pakistan	1,565	1,703	2,218	2,420	2,500	2,500
United States	345	600	700	985	960	1,090
Bangladesh	757	847	950	1,000	1,070	1,070
Egypt	616	754	767	700	925	925
Vietnam	198	358	440	575	650	650
Russian Federation	594	546	524	725	640	640
Iran	351	485	388	500	550	550
Other	7,593	8,735	8,123	8,897	9,056	9,336
<b>Total</b>	<b>23,935</b>	<b>26,174</b>	<b>27,396</b>	<b>29,562</b>	<b>30,801</b>	<b>31,111</b>
<b>Exports</b>						
Indonesia	9,631	11,696	11,450	13,505	14,600	14,600
Malaysia	12,684	12,931	12,900	14,217	14,260	14,260
Thailand	81	205	283	383	500	500
Papua New Guinea	327	330	360	380	405	405
Jordan	333	265	280	300	300	300
Other	1,495	1,443	1,636	1,584	1,530	1,536
<b>Total</b>	<b>24,551</b>	<b>26,870</b>	<b>26,909</b>	<b>30,369</b>	<b>31,595</b>	<b>31,601</b>
<b>Domestic Consumption</b>						
China, Peoples Republic	4,363	4,975	5,139	5,228	5,900	5,800
Indonesia	4,015	4,361	4,641	4,801	4,950	4,950
India	3,406	3,125	3,769	4,612	4,625	4,625
EU-27	3,916	4,151	4,256	3,860	3,780	3,780
Malaysia	2,659	2,926	3,171	3,225	3,601	3,601
Pakistan	1,560	1,708	2,218	2,420	2,500	2,500
United States	324	568	661	969	965	1,090
Bangladesh	747	821	950	1,015	1,085	1,085
Nigeria	985	1,005	1,010	1,020	1,020	1,020
Thailand	776	601	751	747	900	915
Egypt	616	754	767	700	925	800
Russian Federation	584	535	528	705	640	640
Vietnam	193	338	420	567	640	640
Iran	351	485	388	500	550	550
Japan	492	499	521	551	550	550
Colombia	437	492	483	520	540	540
Turkey	419	432	421	420	520	520
Burma, Union of	278	304	330	365	375	375
Mexico	307	351	357	362	362	362
South Africa, Republic of	273	283	296	323	348	348
Other	5,770	6,624	6,618	7,073	7,196	7,460
<b>Total</b>	<b>32,471</b>	<b>35,338</b>	<b>37,695</b>	<b>39,983</b>	<b>41,972</b>	<b>42,151</b>
<b>Ending Stocks</b>						
Malaysia	1,507	1,881	1,400	1,975	2,214	2,214
Indonesia	1,053	596	1,127	1,141	1,311	1,311
Thailand	105	84	221	171	186	186
EU-27	200	220	144	144	174	174
Egypt	0	0	0	0	0	125
Other	680	701	719	679	666	661
<b>Total</b>	<b>3,545</b>	<b>3,482</b>	<b>3,611</b>	<b>4,110</b>	<b>4,551</b>	<b>4,671</b>

**Table 11: Palm Oil: World Supply and Distribution (Continued)****Thousand Metric Tons**

<b>2004/05</b>	<b>2005/06</b>	<b>2006/07</b>	<b>2007/08</b>	<b>Oct 2008/09</b>	<b>Nov 2008/09</b>
----------------	----------------	----------------	----------------	------------------------	------------------------

Most countries are based on a October/September Marketing Year (MY). EU-25, Philippines, and Thailand are on an January/December MY and Turkey is on a November/October MY.

**Table 12: Rapeseed and Products: World Supply and Distribution**  
**Thousand Metric Tons**

		Meal, Rapeseed			Oil, Rapeseed			Oilseed, Rapeseed		
Marketing Year		2006/07	2007/08	2008/09	2006/07	2007/08	2008/09	2006/07	2007/08	2008/09
<b>Production</b>										
China, Peoples Republic of	(Oct-Sep)	7,205	6,856	7,230	4,067	3,870	3,970	10,966	10,573	11,500
India	(Oct-Sep)	3,410	3,150	3,187	2,135	1,968	1,990	5,800	5,450	5,800
Canada	(Aug-Jul)	2,055	2,300	2,410	1,500	1,675	1,750	9,000	9,528	10,900
Japan	(Oct-Sep)	1,255	1,275	1,305	890	902	925	1	1	1
EU-27	(Jul-Jun)	9,050	10,500	11,280	6,520	7,575	8,140	16,092	18,406	19,200
Other		3,043	3,385	3,851	2,028	2,281	2,605	3,304	4,472	6,985
<b>World Total</b>		<b>26,018</b>	<b>27,466</b>	<b>29,263</b>	<b>17,140</b>	<b>18,271</b>	<b>19,380</b>	<b>45,163</b>	<b>48,430</b>	<b>54,386</b>
<b>Imports</b>										
China, Peoples Republic of	(Oct-Sep)	328	301	200	330	277	330	961	805	650
India	(Oct-Sep)	0	0	0	0	0	0	25	25	100
Canada	(Aug-Jul)	2	3	3	136	36	50	209	177	200
Japan	(Oct-Sep)	64	29	40	18	17	12	2,165	2,257	2,300
EU-27	(Jul-Jun)	106	106	80	727	296	175	432	686	1,850
Other		2,535	3,086	3,129	989	1,322	1,462	3,128	3,721	4,040
<b>World Total</b>		<b>3,035</b>	<b>3,525</b>	<b>3,452</b>	<b>2,200</b>	<b>1,948</b>	<b>2,029</b>	<b>6,920</b>	<b>7,671</b>	<b>9,140</b>
<b>Exports</b>										
China, Peoples Republic of	(Oct-Sep)	54	89	100	54	8	10	1	1	1
India	(Oct-Sep)	910	1,143	800	2	1	1	5	4	4
Canada	(Aug-Jul)	1,482	1,845	1,905	1,265	1,330	1,400	5,450	5,767	5,300
Japan	(Oct-Sep)	0	0	0	0	0	0	0	0	0
EU-27	(Jul-Jun)	64	182	200	51	132	150	75	391	400
Other		393	519	631	571	452	539	1,104	2,106	3,963
<b>World Total</b>		<b>2,903</b>	<b>3,778</b>	<b>3,636</b>	<b>1,943</b>	<b>1,923</b>	<b>2,100</b>	<b>6,635</b>	<b>8,269</b>	<b>9,668</b>
<b>Domestic Consumption</b>										
China, Peoples Republic of	(Oct-Sep)	7,479	7,068	7,330	4,343	4,139	4,290	11,926	11,377	12,149
India	(Oct-Sep)	2,800	2,012	2,387	2,133	1,967	1,989	6,449	5,866	5,946
Canada	(Aug-Jul)	473	507	510	373	380	400	3,966	4,354	4,716
Japan	(Oct-Sep)	1,330	1,307	1,331	918	926	937	2,215	2,250	2,305
EU-27	(Jul-Jun)	9,100	10,410	11,135	7,198	7,774	8,137	16,608	19,128	20,484
Other		5,190	5,947	6,353	2,556	3,153	3,535	5,381	6,023	6,822
<b>World Total</b>		<b>26,372</b>	<b>27,251</b>	<b>29,046</b>	<b>17,521</b>	<b>18,339</b>	<b>19,288</b>	<b>46,545</b>	<b>48,998</b>	<b>52,422</b>
<b>Ending Stocks</b>										
China, Peoples Republic of	(Oct-Sep)	0	0	0	0	0	0	0	0	0
India	(Oct-Sep)	50	45	45	0	0	0	495	100	50
Canada	(Aug-Jul)	116	67	65	47	48	48	1,809	1,393	2,477
Japan	(Oct-Sep)	29	26	40	38	31	31	132	140	136
EU-27	(Jul-Jun)	87	101	126	211	176	204	1,441	1,014	1,180
Other		68	73	69	162	160	153	532	596	836
<b>World Total</b>		<b>350</b>	<b>312</b>	<b>345</b>	<b>458</b>	<b>415</b>	<b>436</b>	<b>4,409</b>	<b>3,243</b>	<b>4,679</b>

**Table 13: Sunflowerseed and Products World Supply and Distribution**  
**Thousand Metric Tons**

		Oilseed, Sunflowerseed			Meal, Sunflowerseed			Oil, Sunflowerseed		
Marketing Year		2006/07	2007/08	2008/09	2006/07	2007/08	2008/09	2006/07	2007/08	2008/09
<b>Production</b>										
Argentina	(Mar-Feb)	3,500	4,650	4,400	1,285	1,900	1,895	1,202	1,855	1,850
Russian Federation	(Sep-Aug)	6,750	5,650	7,000	2,220	1,917	2,300	2,465	2,130	2,553
Turkey	(Sep-Aug)	850	700	850	472	470	505	525	523	570
Ukraine	(Sep-Aug)	5,300	4,200	6,000	2,025	1,700	2,240	2,050	1,726	2,280
EU-27	(Oct-Sep)	6,502	4,771	6,500	3,000	2,445	2,950	2,200	1,773	2,147
Other		6,910	7,246	8,415	2,513	2,290	2,662	2,154	1,980	2,278
<b>World Total</b>		29,812	27,217	33,165	11,515	10,722	12,552	10,596	9,987	11,678
<b>Imports</b>										
Argentina	(Mar-Feb)	26	20	20	0	0	0	2	0	0
Russian Federation	(Sep-Aug)	10	11	10	30	20	20	115	130	30
Turkey	(Sep-Aug)	439	530	500	396	406	300	113	300	300
Ukraine	(Sep-Aug)	6	8	5	0	0	0	0	1	0
EU-27	(Oct-Sep)	570	320	350	1,774	1,560	1,750	1,193	1,100	1,370
Other		633	272	283	1,108	1,113	1,312	1,903	1,228	1,676
<b>World Total</b>		1,684	1,161	1,168	3,308	3,099	3,382	3,326	2,759	3,376
<b>Exports</b>										
Argentina	(Mar-Feb)	59	100	95	766	1,280	1,260	853	1,475	1,450
Russian Federation	(Sep-Aug)	162	40	180	866	660	800	711	320	670
Turkey	(Sep-Aug)	2	3	3	0	0	0	9	4	10
Ukraine	(Sep-Aug)	336	75	350	1,483	1,273	1,600	1,867	1,325	1,580
EU-27	(Oct-Sep)	749	515	325	146	60	148	149	120	125
Other		581	750	771	215	182	169	266	296	293
<b>World Total</b>		1,889	1,483	1,724	3,476	3,455	3,977	3,855	3,540	4,128
<b>Domestic Consumption</b>										
Argentina	(Mar-Feb)	3,083	4,553	4,538	559	621	630	389	382	392
Russian Federation	(Sep-Aug)	6,530	5,648	6,767	1,370	1,312	1,485	1,854	1,890	1,923
Turkey	(Sep-Aug)	1,249	1,247	1,340	868	876	805	729	773	842
Ukraine	(Sep-Aug)	4,903	4,133	5,459	542	427	600	334	373	501
EU-27	(Oct-Sep)	6,355	4,990	6,077	4,648	3,967	4,477	3,287	2,907	3,238
Other		7,270	6,740	7,737	3,396	3,221	3,805	3,770	2,907	3,660
<b>World Total</b>		29,390	27,311	31,918	11,383	10,424	11,802	10,363	9,232	10,556
<b>Ending Stocks</b>										
Argentina	(Mar-Feb)	1,655	1,672	1,459	81	80	85	36	34	42
Russian Federation	(Sep-Aug)	314	287	350	39	4	39	110	160	150
Turkey	(Sep-Aug)	56	36	43	0	0	0	40	86	104
Ukraine	(Sep-Aug)	75	75	271	5	5	45	13	42	241
EU-27	(Oct-Sep)	630	216	664	87	65	140	240	86	240
Other		313	341	531	16	16	16	75	80	81
<b>World Total</b>		3,043	2,627	3,318	228	170	325	514	488	858



**Table 14: Minor Vegetable Oil Supply and Distribution**  
**Thousand Metric Tons**

Marketing Year		Oil, Peanut			Oil, Cottonseed			Oil, Olive		
		2006/07	2007/08	2008/09	2006/07	2007/08	2008/09	2006/07	2007/08	2008/09
<b>Production</b>										
China, Peoples Republic of	(Oct-Sep)	2,007	2,020	2,165	1,525	1,595	1,565	nr	nr	nr
India	(Oct-Sep)	1,315	1,625	1,580	942	1,088	1,149	nr	nr	nr
Turkey	(Nov-Oct)	4	4	4	210	190	147	175	170	175
United States	(Aug-Jul)	72	73	87	385	392	372	1	2	1
EU-27	(Oct-Sep)	16	16	16	56	60	54	2,210	2,170	2,250
Other		1,081	1,078	1,151	1,738	1,664	1,632	521	497	542
<b>World Total</b>		4,495	4,816	5,003	4,856	4,989	4,919	2,907	2,839	2,968
<b>Imports</b>										
China, Peoples Republic of	(Oct-Sep)	11	10	6	0	0	0	nr	nr	nr
India	(Oct-Sep)	0	0	0	0	0	0	nr	nr	nr
Turkey	(Nov-Oct)	0	0	0	2	4	4	0	0	0
United States	(Aug-Jul)	47	34	50	1	0	0	267	279	289
EU-27	(Oct-Sep)	103	92	96	8	3	5	221	175	235
Other		21	26	20	94	96	108	170	168	173
<b>World Total</b>		182	162	172	105	103	117	658	622	697
<b>Exports</b>										
China, Peoples Republic of	(Oct-Sep)	11	10	10	2	4	8	nr	nr	nr
India	(Oct-Sep)	0	25	30	0	0	0	nr	nr	nr
Turkey	(Nov-Oct)	0	0	0	6	1	1	36	80	85
United States	(Aug-Jul)	5	6	6	63	84	59	4	4	4
EU-27	(Oct-Sep)	3	2	2	1	1	1	408	400	412
Other		141	132	156	84	97	79	256	207	247
<b>World Total</b>		160	175	204	156	187	148	704	691	748
<b>Domestic Consumption</b>										
China, Peoples Republic of	(Oct-Sep)	2,007	2,020	2,161	1,523	1,591	1,557	nr	nr	nr
India	(Oct-Sep)	1,370	1,570	1,550	947	1,110	1,142	nr	nr	nr
Turkey	(Nov-Oct)	4	4	4	191	193	165	80	85	90
United States	(Aug-Jul)	115	100	131	324	290	338	264	277	286
EU-27	(Oct-Sep)	112	110	110	63	63	57	2,030	2,060	2,070
Other		985	991	1,011	1,747	1,704	1,672	458	467	475
<b>World Total</b>		4,593	4,795	4,967	4,795	4,951	4,931	2,832	2,889	2,921
<b>Ending Stocks</b>										
China, Peoples Republic of	(Oct-Sep)	0	0	0	0	0	0	nr	nr	nr
India	(Oct-Sep)	15	45	45	55	33	40	nr	nr	nr
Turkey	(Nov-Oct)	0	0	0	15	15	0	84	89	89
United States	(Aug-Jul)	10	11	11	45	63	38	0	0	0
EU-27	(Oct-Sep)	9	5	5	3	2	3	943	828	831
Other		29	10	14	83	42	31	155	146	139
<b>World Total</b>		63	71	75	201	155	112	1,182	1,063	1,059

**Table 14: Minor Vegetable Oil Supply and Distribution (Continued)**  
**Thousand Metric Tons**

Marketing Year	Oil, Peanut			Oil, Cottonseed			Oil, Olive		
	2006/07	2007/08	2008/09	2006/07	2007/08	2008/09	2006/07	2007/08	2008/09

Turkey's Cottonseed Oil Marketing Year (MY) is October/September. China and India are not included in the Olive Oil database. The EU-25's Olive Oil MY is November/October and the U.S. MY for Olive Oil is October/September.

**Table 15: World Oilseeds and Products Supply and Distribution**

Million Metric Tons

	Area Harvested	Beginning Stocks	Production	Imports	Total Supply	Exports	Food Use Dom.	Domestic Consumpti	Ending Stocks
<b>Major Oilseeds</b>									
1995/96	174.08	29.12	257.63	41.95	328.69	41.53	22.00	262.86	24.30
1996/97	169.96	24.30	261.36	45.12	330.78	46.06	22.32	263.63	21.09
1997/98	177.25	21.09	286.75	48.00	355.84	49.20	22.17	275.28	31.36
1998/99	184.76	31.36	294.57	51.87	377.80	51.02	24.43	292.07	34.71
1999/00	188.48	34.71	304.26	59.20	398.17	59.36	25.51	300.21	38.60
2000/01	188.60	38.60	313.94	65.59	418.13	66.94	26.79	311.00	40.20
2001/02	188.55	40.20	324.82	63.67	428.69	62.30	27.52	323.93	42.46
2002/03	187.15	42.46	331.74	71.04	445.23	69.71	27.69	326.51	49.02
2003/04	199.79	49.02	335.85	64.15	449.02	66.97	27.92	336.85	45.20
2004/05	210.10	45.20	381.47	72.70	499.37	74.44	29.31	367.39	57.54
2005/06	211.37	57.54	391.13	75.31	523.98	75.75	29.81	383.52	64.71
2006/07	211.61	64.71	404.25	80.73	549.69	83.72	30.36	393.22	72.74
2007/08	207.44	72.74	391.35	90.73	554.82	92.74	30.46	400.51	61.57
2008/09	217.00	61.57	417.84	90.29	569.70	92.51	31.23	412.62	64.57
<b>Major Protein Meals</b>									
1995/96	nr	8.24	146.28	42.06	196.59	43.91	0.30	144.77	7.91
1996/97	nr	7.91	146.97	43.55	198.42	44.22	0.33	147.29	6.91
1997/98	nr	6.91	153.20	45.53	205.64	44.32	0.35	153.43	7.90
1998/99	nr	7.90	163.39	47.04	218.33	47.22	0.40	162.60	8.51
1999/00	nr	8.48	167.85	47.26	223.59	46.64	0.42	169.05	7.90
2000/01	nr	7.90	174.76	48.07	230.73	48.43	0.41	175.14	7.16
2001/02	nr	7.16	182.69	51.38	241.22	52.76	0.42	180.91	7.55
2002/03	nr	7.55	186.05	53.55	247.16	53.74	0.42	186.27	7.15
2003/04	nr	7.15	190.58	57.72	255.45	58.67	0.51	189.77	7.00
2004/05	nr	7.00	206.97	59.32	273.29	60.96	0.55	204.44	7.90
2005/06	nr	7.90	216.37	64.95	289.22	65.93	0.55	215.37	7.92
2006/07	nr	7.92	224.25	66.54	298.72	68.38	0.54	222.66	7.68
2007/08	nr	7.68	230.69	70.19	308.56	70.81	0.54	229.79	7.96
2008/09	nr	7.96	236.63	70.56	315.15	72.13	0.54	235.00	8.02
<b>Major Vegetable Oils</b>									
1995/96	9.97	6.57	71.23	21.96	99.76	22.80	62.07	69.27	7.69
1996/97	10.36	7.69	73.79	24.63	106.11	26.00	65.25	72.90	7.22
1997/98	7.69	7.22	75.19	24.68	107.08	26.28	66.31	73.74	7.06
1998/99	7.95	7.06	80.38	26.91	114.36	27.78	70.79	78.64	7.94
1999/00	8.33	7.79	85.96	26.57	120.32	28.74	74.62	82.67	8.91
2000/01	10.23	8.91	89.78	30.26	128.95	30.93	79.04	88.64	9.38
2001/02	10.50	9.38	92.74	31.42	133.54	33.04	81.12	91.61	8.89
2002/03	4.55	8.89	95.94	34.90	139.74	35.77	83.61	95.57	8.40
2003/04	4.42	8.40	102.52	37.02	147.93	38.83	86.66	100.40	8.70
2004/05	8.12	8.70	111.42	40.50	160.61	42.49	91.33	107.86	10.27
2005/06	8.22	10.27	118.47	44.49	173.24	47.23	94.96	115.42	10.58
2006/07	8.29	10.58	121.35	47.61	179.54	48.50	97.43	121.13	9.92
2007/08	7.33	9.92	127.98	49.31	187.20	52.08	100.94	125.29	9.83
2008/09	7.33	9.83	133.70	51.44	194.96	53.69	104.93	130.74	10.53

Based on the aggregate of different marketing years

**Table 16: World: Soybeans and Products Supply and Distribution**

Million Metric Tons

	Area Harvested	Beginning Stocks	Production	Imports	Total Supply	Exports	Crush	Domestic Consumpti	Ending Stocks
<b>Oilseed, Soybean</b>									
1995/96	61.07	25.10	124.74	32.46	182.30	31.64	112.09	131.66	19.00
1996/97	62.44	19.00	131.95	35.63	186.58	36.76	113.67	133.87	15.94
1997/98	68.53	15.94	157.95	38.16	212.06	39.28	123.21	145.15	27.63
1998/99	71.30	27.63	159.83	38.53	225.99	37.93	134.64	158.81	29.25
1999/00	71.92	29.25	160.35	45.57	235.17	45.62	135.10	159.35	30.20
2000/01	75.44	30.20	175.76	53.05	259.01	53.76	146.60	171.56	33.70
2001/02	79.47	33.70	184.82	54.39	272.90	52.90	158.02	184.48	35.53
2002/03	82.31	35.53	196.86	62.92	295.30	60.98	165.63	191.46	42.86
2003/04	88.40	42.86	186.62	54.00	283.48	56.20	163.77	189.45	37.83
2004/05	93.18	37.83	215.76	63.48	317.07	64.79	175.74	204.85	47.43
2005/06	92.92	47.43	220.53	64.08	332.04	63.78	185.21	215.18	53.08
2006/07	94.29	53.08	237.33	69.05	359.46	71.50	195.90	225.28	62.68
2007/08	90.82	62.68	220.89	78.86	362.43	79.43	201.96	229.96	53.04
2008/09	98.24	53.04	235.74	77.11	365.89	77.87	203.60	233.96	54.06
<b>Meal, Soybean</b>									
1995/96	nr	6.21	88.83	29.35	124.39	30.57	112.14	88.41	5.41
1996/97	nr	5.41	90.12	30.64	126.16	30.25	113.71	91.07	4.84
1997/98	nr	4.84	98.00	34.02	136.86	32.63	123.35	98.43	5.80
1998/99	nr	5.80	106.38	35.76	147.95	35.38	134.69	106.01	6.55
1999/00	nr	6.55	107.17	34.90	148.62	34.10	135.13	108.62	5.90
2000/01	nr	5.90	116.15	35.93	157.98	36.25	146.63	116.04	5.70
2001/02	nr	5.70	125.07	40.39	171.16	41.69	158.12	123.62	5.85
2002/03	nr	5.85	130.65	42.47	178.96	42.78	165.64	130.16	6.03
2003/04	nr	6.03	128.67	44.94	179.64	45.65	163.77	128.50	5.49
2004/05	nr	5.49	138.99	45.93	190.41	47.21	175.74	136.75	6.44
2005/06	nr	6.44	145.86	51.18	203.49	51.88	185.22	145.50	6.10
2006/07	nr	6.10	153.78	52.49	212.38	54.27	195.90	151.82	6.28
2007/08	nr	6.28	158.30	54.94	219.51	55.31	201.96	157.49	6.72
2008/09	nr	6.72	160.10	55.13	221.95	56.15	203.60	159.39	6.42
<b>Oil, Soybean</b>									
1995/96	nr	2.82	20.28	4.74	27.84	4.90	112.09	19.62	3.32
1996/97	nr	3.32	20.43	5.21	28.95	5.71	113.68	20.61	2.64
1997/98	nr	2.64	22.41	6.23	31.28	6.41	123.22	22.16	2.71
1998/99	nr	2.71	24.43	7.23	34.37	7.50	134.67	24.39	2.47
1999/00	nr	2.47	24.49	6.06	33.03	6.22	135.14	23.94	2.87
2000/01	nr	2.87	26.74	6.95	36.55	7.05	146.63	26.37	3.13
2001/02	nr	3.13	28.90	7.74	39.77	8.35	158.12	28.30	3.12
2002/03	nr	3.12	30.58	8.27	41.97	9.03	165.63	30.17	2.77
2003/04	nr	2.77	30.18	8.33	41.29	8.80	163.77	30.08	2.40
2004/05	nr	2.40	32.60	8.91	43.91	9.12	175.74	31.70	3.10
2005/06	nr	3.10	34.60	9.04	46.75	9.83	185.21	33.55	3.37
2006/07	nr	3.37	36.32	9.78	49.46	10.57	195.90	35.67	3.22
2007/08	nr	3.22	37.50	10.34	51.07	10.79	201.96	37.43	2.85
2008/09	nr	2.85	37.81	9.94	50.60	10.32	203.60	37.75	2.53

Based on the aggregate of different marketing years, primarily October through September.

**Table 17: World: Rapeseed and Products Supply and Distribution**

Million Metric Tons

	Area Harvested	Beginning Stocks	Production	Imports	Total Supply	Exports	Food Use Dom.	Domestic Consumpti	Ending Stocks
<b>Oilseed, Rapeseed</b>									
1995/96	24.17	1.00	34.31	3.87	39.18	4.17	0.40	33.34	1.67
1996/97	21.91	1.67	31.46	3.84	36.97	3.60	0.35	31.34	2.04
1997/98	23.50	2.04	33.12	4.30	39.46	4.26	0.36	34.13	1.07
1998/99	25.41	1.07	35.76	7.04	43.87	6.84	0.28	34.80	2.23
1999/00	26.75	2.23	42.48	8.20	52.92	8.21	0.39	40.46	4.25
2000/01	24.69	4.25	37.33	6.99	48.57	7.18	0.38	38.70	2.69
2001/02	23.29	2.69	36.01	4.95	43.65	4.90	0.44	35.98	2.78
2002/03	22.10	2.78	33.26	4.03	40.07	4.13	0.38	33.77	2.17
2003/04	25.47	2.17	39.43	5.15	46.74	5.48	0.62	39.16	2.10
2004/05	26.68	2.10	46.09	5.02	53.20	4.87	0.63	43.58	4.75
2005/06	27.26	4.75	48.50	6.71	59.96	6.99	0.30	47.46	5.51
2006/07	26.52	5.51	45.16	6.92	57.59	6.64	0.53	46.55	4.41
2007/08	28.14	4.41	48.43	7.67	60.51	8.27	0.46	49.00	3.24
2008/09	29.89	3.24	54.39	9.14	66.77	9.67	0.47	52.42	4.68
<b>Meal, Rapeseed</b>									
1995/96	nr	0.47	18.40	2.69	21.56	2.96	0.00	18.02	0.58
1996/97	nr	0.58	17.53	2.66	20.77	2.91	0.00	17.35	0.51
1997/98	nr	0.51	18.82	2.82	22.15	2.86	0.00	18.85	0.44
1998/99	nr	0.44	19.21	2.12	21.77	2.04	0.00	19.36	0.37
1999/00	nr	0.34	22.07	2.26	24.66	2.32	0.00	21.96	0.38
2000/01	nr	0.38	21.13	1.92	23.43	1.83	0.00	21.31	0.29
2001/02	nr	0.29	19.94	1.54	21.77	1.51	0.00	19.95	0.30
2002/03	nr	0.30	18.81	1.73	20.84	1.62	0.00	18.95	0.28
2003/04	nr	0.28	21.86	2.49	24.63	2.46	0.00	21.52	0.65
2004/05	nr	0.65	24.24	2.30	27.19	2.51	0.00	24.19	0.49
2005/06	nr	0.49	26.50	2.56	29.54	2.78	0.00	26.19	0.57
2006/07	nr	0.57	26.02	3.04	29.63	2.90	0.00	26.37	0.35
2007/08	nr	0.35	27.47	3.53	31.34	3.78	0.00	27.25	0.31
2008/09	nr	0.31	29.26	3.45	33.03	3.64	0.00	29.05	0.35
<b>Oil, Rapeseed</b>									
1995/96	nr	0.33	11.08	1.76	13.16	1.69	10.01	11.02	0.45
1996/97	nr	0.45	10.52	1.61	12.58	1.71	9.46	10.48	0.39
1997/98	nr	0.39	11.41	2.02	13.81	2.00	10.37	11.36	0.46
1998/99	nr	0.46	11.81	1.64	13.90	1.81	10.72	11.60	0.49
1999/00	nr	0.45	13.96	1.73	16.15	1.73	13.02	13.73	0.69
2000/01	nr	0.69	13.31	1.34	15.34	1.20	12.23	13.36	0.77
2001/02	nr	0.77	13.06	1.12	14.95	1.03	12.07	13.25	0.67
2002/03	nr	0.67	12.25	0.89	13.81	0.91	11.01	12.34	0.56
2003/04	nr	0.56	14.08	1.36	16.00	1.33	12.40	14.28	0.40
2004/05	nr	0.40	15.69	1.20	17.29	1.30	12.83	15.52	0.46
2005/06	nr	0.46	17.27	1.47	19.20	1.74	13.02	16.88	0.58
2006/07	nr	0.58	17.14	2.20	19.92	1.94	12.61	17.52	0.46
2007/08	nr	0.46	18.27	1.95	20.68	1.92	13.26	18.34	0.42
2008/09	nr	0.42	19.38	2.03	21.82	2.10	13.47	19.29	0.44

Based on the aggregate of different marketing years.

**Table 18: World: Sunflower and Products Supply and Distribution****Million Metric Tons**

	<b>Area Harvested</b>	<b>Beginning Stocks</b>	<b>Production</b>	<b>Imports</b>	<b>Exports</b>	<b>Domestic Consumpti</b>	<b>Ending Stocks</b>
<b>Oilseed, Sunflowerseed</b>							
1995/96	20.45	1.32	25.75	3.40	3.10	25.36	2.01
1996/97	19.03	2.01	23.86	3.21	3.24	24.41	1.43
1997/98	19.15	1.43	23.30	3.17	3.00	24.10	0.81
1998/99	21.46	0.81	26.65	3.76	3.63	26.20	1.40
1999/00	23.06	1.40	27.18	2.07	2.10	26.31	2.23
2000/01	19.92	2.23	23.08	2.23	2.52	23.28	1.74
2001/02	18.83	1.74	21.41	1.11	1.19	21.36	1.71
2002/03	20.17	1.71	24.04	1.37	1.52	23.38	2.23
2003/04	23.27	2.23	26.93	2.19	2.27	26.10	2.97
2004/05	21.40	2.97	25.45	1.13	1.22	25.81	2.52
2005/06	23.12	2.52	30.04	1.30	1.50	29.53	2.83
2006/07	23.70	2.83	29.81	1.68	1.89	29.39	3.04
2007/08	21.88	3.04	27.22	1.16	1.48	27.31	2.63
2008/09	24.43	2.63	33.17	1.17	1.72	31.92	3.32
<b>Meal, Sunflowerseed</b>							
1995/96	nr	0.30	10.32	2.16	2.26	10.02	0.49
1996/97	nr	0.49	10.12	2.25	2.39	10.20	0.28
1997/98	nr	0.28	9.80	2.32	2.39	9.65	0.36
1998/99	nr	0.36	10.59	2.57	2.85	10.29	0.39
1999/00	nr	0.39	10.57	2.54	2.34	10.77	0.39
2000/01	nr	0.39	9.33	2.23	2.00	9.64	0.31
2001/02	nr	0.31	8.33	1.91	2.11	8.21	0.23
2002/03	nr	0.23	9.04	2.20	2.31	9.00	0.17
2003/04	nr	0.17	10.23	2.62	2.86	9.96	0.19
2004/05	nr	0.19	10.02	2.55	2.78	9.81	0.17
2005/06	nr	0.17	11.50	3.23	3.52	11.12	0.26
2006/07	nr	0.26	11.52	3.31	3.48	11.38	0.23
2007/08	nr	0.23	10.72	3.10	3.46	10.42	0.17
2008/09	nr	0.17	12.55	3.38	3.98	11.80	0.33
<b>Oil, Sunflowerseed</b>							
1995/96	nr	0.65	9.07	2.53	2.57	8.53	1.15
1996/97	nr	1.15	8.65	3.08	3.27	8.86	0.75
1997/98	nr	0.75	8.47	2.68	3.07	8.20	0.63
1998/99	nr	0.63	9.31	2.94	3.14	8.87	0.87
1999/00	nr	0.83	9.27	2.45	2.90	8.74	0.90
2000/01	nr	0.90	8.18	2.01	2.24	8.18	0.68
2001/02	nr	0.68	7.42	1.76	1.92	7.48	0.46
2002/03	nr	0.46	8.14	2.00	2.26	7.85	0.49
2003/04	nr	0.49	9.20	1.92	2.67	8.38	0.57
2004/05	nr	0.57	9.19	2.16	2.63	8.54	0.75
2005/06	nr	0.75	10.56	3.26	3.92	9.83	0.81
2006/07	nr	0.81	10.60	3.33	3.86	10.36	0.51
2007/08	nr	0.51	9.99	2.76	3.54	9.23	0.49
2008/09	nr	0.49	11.68	3.38	4.13	10.56	0.86

Based on the aggregate of different marketing years, primarily September through August.

**Table 19: World: Palm Oil, Coconut Oil, and Fish Meal Supply and Distribution**

Million Metric Tons

	Beginning Stocks	Production	Imports	Total Supply	Exports	Industrial Dom.	Food Use Dom.	Domestic Consumpti	Ending Stocks
<b>Oil, Palm</b>									
1995/96	1.36	16.21	10.03	27.59	10.52	2.68	12.46	15.35	1.72
1996/97	1.72	17.67	11.56	30.95	11.85	2.78	14.14	17.18	1.91
1997/98	1.91	16.94	10.36	29.22	10.79	2.69	13.88	16.78	1.65
1998/99	1.65	19.21	12.02	32.87	12.34	2.81	14.94	17.98	2.56
1999/00	2.52	21.78	13.13	37.42	14.02	2.80	17.43	20.51	2.89
2000/01	2.89	24.30	16.25	43.43	16.47	3.29	20.37	24.11	2.86
2001/02	2.86	25.32	16.93	45.11	17.63	3.74	20.57	24.89	2.60
2002/03	2.60	27.64	19.61	49.85	19.61	4.79	22.23	27.62	2.62
2003/04	2.62	30.00	21.32	53.94	21.61	5.80	22.82	29.21	3.11
2004/05	3.11	33.52	23.94	60.57	24.55	7.02	24.76	32.47	3.55
2005/06	3.55	35.97	26.17	65.69	26.87	7.82	26.86	35.34	3.48
2006/07	3.48	37.34	27.40	68.22	26.91	8.49	28.54	37.70	3.61
2007/08	3.61	41.29	29.56	74.46	30.37	8.27	31.03	39.98	4.11
2008/09	4.11	43.20	31.11	78.42	31.60	8.67	32.79	42.15	4.67
<b>Oil, Coconut</b>									
1995/96	0.31	3.09	1.32	4.73	1.49	0.91	2.00	3.06	0.18
1996/97	0.18	3.74	1.48	5.41	1.66	0.99	2.20	3.36	0.39
1997/98	0.39	3.37	1.73	5.49	2.06	1.07	1.88	3.12	0.31
1998/99	0.31	2.72	1.23	4.26	1.11	1.00	1.75	2.93	0.22
1999/00	0.19	3.37	1.48	5.04	1.96	1.09	1.69	2.91	0.17
2000/01	0.17	3.59	1.77	5.53	1.83	1.19	2.05	3.38	0.33
2001/02	0.33	3.17	1.83	5.33	1.79	1.24	1.81	3.20	0.34
2002/03	0.34	3.14	1.89	5.37	1.74	1.23	1.83	3.17	0.46
2003/04	0.46	3.29	1.68	5.43	1.79	1.27	1.84	3.24	0.41
2004/05	0.41	3.45	1.87	5.73	2.04	1.38	1.84	3.33	0.36
2005/06	0.36	3.47	1.99	5.82	1.99	1.48	1.88	3.48	0.36
2006/07	0.36	3.25	1.89	5.50	1.82	1.46	1.77	3.35	0.33
2007/08	0.33	3.48	1.86	5.67	2.03	1.46	1.81	3.36	0.28
2008/09	0.28	3.64	1.95	5.87	1.99	1.54	1.96	3.59	0.29
<b>Meal, Fish</b>									
1995/96	0.74	6.37	3.55	10.66	3.55	0.09	0.00	6.27	0.84
1996/97	0.84	6.64	3.49	10.97	4.06	0.09	0.00	6.26	0.65
1997/98	0.65	4.97	2.28	7.90	2.26	0.09	0.00	4.98	0.66
1998/99	0.66	5.81	2.78	9.24	3.09	0.08	0.00	5.49	0.67
1999/00	0.67	6.33	3.70	10.69	3.67	0.08	0.00	6.38	0.65
2000/01	0.65	5.93	3.48	10.05	3.47	0.08	0.00	6.18	0.40
2001/02	0.40	5.84	3.25	9.49	3.06	0.08	0.00	5.74	0.69
2002/03	0.69	4.84	2.84	8.37	2.87	0.08	0.00	5.19	0.31
2003/04	0.31	5.33	3.11	8.74	3.21	0.07	0.00	5.36	0.18
2004/05	0.18	5.70	3.62	9.50	3.65	0.05	0.00	5.70	0.15
2005/06	0.15	4.94	2.92	8.01	2.73	0.05	0.00	5.13	0.15
2006/07	0.15	5.06	2.68	7.90	2.59	0.05	0.00	5.07	0.24
2007/08	0.24	5.10	2.94	8.28	2.72	0.05	0.00	5.31	0.25
2008/09	0.25	5.15	3.15	8.55	2.71	0.05	0.00	5.56	0.28

Based on the aggregate of different marketing years.

**Table 20: United States Oilseeds and Products Supply and Distribution Local Marketing Year****Thousand Metric Tons**

	<b>Area Harvested</b>	<b>Beginning Stocks</b>	<b>Production</b>	<b>Imports</b>	<b>Total Supply</b>	<b>Exports</b>	<b>Crush</b>	<b>Domestic Consumpti</b>	<b>Ending Stocks</b>
<b>Major Oilseeds</b>									
1995/96	33,536	10,273	69,026	466	79,765	23,872	42,572	49,842	6,051
1996/97	32,555	6,051	74,755	594	81,400	24,746	44,135	52,000	4,654
1997/98	35,351	4,654	83,095	670	88,419	24,519	48,889	57,455	6,445
1998/99	35,275	6,445	84,365	684	91,494	22,721	47,814	57,993	10,780
1999/00	37,149	10,780	82,315	759	93,854	27,395	47,891	57,474	8,985
2000/01	36,805	8,985	84,891	817	94,693	27,976	49,066	58,897	7,820
2001/02	37,323	7,820	89,832	653	98,305	29,966	50,622	61,466	6,873
2002/03	36,284	6,873	83,935	550	91,358	29,433	47,495	56,090	5,835
2003/04	36,041	5,835	76,599	504	82,938	25,159	45,529	53,627	4,152
2004/05	36,808	4,152	95,938	681	100,771	30,708	50,167	61,774	8,289
2005/06	36,587	8,289	95,532	664	104,485	26,611	51,897	63,673	14,201
2006/07	36,962	14,201	96,612	1,033	111,846	31,647	53,483	63,177	17,022
2007/08	31,970	17,022	82,437	1,266	100,725	33,115	53,436	60,701	6,909
2008/09	35,205	6,909	88,167	1,068	96,144	28,969	51,834	60,201	6,974
<b>Major Protien Meals</b>									
1995/96	nr	262	32,294	1,048	33,604	5,765	42,572	27,587	252
1996/97	nr	252	33,772	1,025	35,049	6,705	44,135	28,115	229
1997/98	nr	229	37,422	1,355	39,006	8,958	48,889	29,749	299
1998/99	nr	299	36,799	1,206	38,304	7,234	47,814	30,737	333
1999/00	nr	333	36,700	1,224	38,257	7,138	47,891	30,822	297
2000/01	nr	297	38,219	1,166	39,682	7,605	49,066	31,681	396
2001/02	nr	396	38,892	1,059	40,347	7,521	50,622	32,540	286
2002/03	nr	286	36,614	1,194	38,094	5,924	47,495	31,924	246
2003/04	nr	246	35,218	1,835	37,299	4,944	45,529	32,081	274
2004/05	nr	274	39,265	1,529	41,068	6,954	50,167	33,899	215
2005/06	nr	215	39,950	1,653	41,818	7,608	51,897	33,849	361
2006/07	nr	361	41,521	1,699	43,581	8,263	53,483	34,930	388
2007/08	nr	388	40,847	2,022	43,257	8,687	53,436	34,240	330
2008/09	nr	330	40,110	2,070	42,510	8,134	51,834	34,042	334
<b>Major Vegetable Oils</b>									
1995/96	0	739	8,169	1,279	10,187	977	42,572	8,059	1,151
1996/97	0	1,151	8,333	1,553	11,037	1,515	44,135	8,579	943
1997/98	0	943	9,505	1,644	12,092	2,044	48,889	9,064	984
1998/99	0	984	9,430	1,436	11,850	1,634	47,814	9,217	999
1999/00	0	999	9,371	1,527	11,897	1,126	47,891	9,554	1,217
2000/01	0	1,217	9,509	1,683	12,409	1,047	49,066	9,722	1,640
2001/02	0	1,640	9,645	1,627	12,912	1,549	50,622	10,058	1,305
2002/03	0	1,305	9,187	1,536	12,028	1,237	47,495	9,870	921
2003/04	0	921	8,771	1,914	11,606	739	45,529	10,073	794
2004/05	0	794	9,758	1,833	12,385	840	50,167	10,452	1,093
2005/06	0	1,093	10,392	2,385	13,870	895	51,897	11,157	1,818
2006/07	0	1,818	10,412	2,525	14,755	1,336	53,483	11,678	1,741
2007/08	0	1,741	10,510	3,125	15,376	1,678	53,436	12,189	1,509
2008/09	0	1,509	10,192	3,414	15,115	1,327	51,834	12,529	1,259

Based on the aggregate of different marketing years



**Table 21: United States Soybeans and Products Supply and Distribution Local Marketing Years****Thousand Metric Tons**

	<b>Area Harvested</b>	<b>Beginning Stocks</b>	<b>Production</b>	<b>Imports</b>	<b>Total Supply</b>	<b>Exports</b>	<b>Crush</b>	<b>Domestic Consumpti</b>	<b>Ending Stocks</b>
<b>Oilseed, Soybean</b>									
1995/96	24,906	9,112	59,174	121	68,407	23,108	37,273	40,306	4,993
1996/97	25,637	4,993	64,780	242	70,015	24,110	39,080	42,317	3,588
1997/98	27,968	3,588	73,176	135	76,899	23,760	43,464	47,701	5,438
1998/99	28,507	5,438	74,598	82	80,118	21,898	43,262	48,736	9,484
1999/00	29,318	9,484	72,224	114	81,822	26,537	42,927	47,388	7,897
2000/01	29,303	7,897	75,055	97	83,049	27,103	44,625	49,203	6,743
2001/02	29,532	6,743	78,672	63	85,478	28,948	46,259	50,867	5,663
2002/03	29,339	5,663	75,010	127	80,800	28,423	43,948	47,524	4,853
2003/04	29,330	4,853	66,778	151	71,782	24,128	41,632	44,595	3,059
2004/05	29,930	3,059	85,013	152	88,224	29,860	46,160	51,404	6,960
2005/06	28,834	6,960	83,368	92	90,420	25,579	47,324	52,612	12,229
2006/07	30,190	12,229	86,770	246	99,245	30,386	49,198	53,242	15,617
2007/08	25,957	15,617	72,824	269	88,710	31,598	49,024	51,532	5,580
2008/09	30,098	5,580	79,486	191	85,257	27,760	47,491	51,920	5,577
<b>Meal, Soybean</b>									
1995/96	nr	203	29,508	68	29,779	5,524	37,273	24,062	193
1996/97	nr	193	31,035	92	31,320	6,451	39,080	24,678	191
1997/98	nr	191	34,633	51	34,875	8,722	43,464	25,955	198
1998/99	nr	198	34,285	90	34,573	6,979	43,262	27,294	300
1999/00	nr	300	34,102	45	34,447	6,912	42,927	27,269	266
2000/01	nr	266	35,730	46	36,042	7,335	44,625	28,359	348
2001/02	nr	348	36,552	130	37,030	7,271	46,259	29,541	218
2002/03	nr	218	34,649	157	35,024	5,728	43,948	29,096	200
2003/04	nr	200	32,953	258	33,411	4,690	41,632	28,530	191
2004/05	nr	191	36,936	134	37,261	6,659	46,160	30,446	156
2005/06	nr	156	37,416	128	37,700	7,301	47,324	30,114	285
2006/07	nr	285	39,058	142	39,485	7,987	49,198	31,184	314
2007/08	nr	314	38,322	127	38,763	8,346	49,024	30,150	267
2008/09	nr	267	37,640	150	38,057	7,802	47,491	29,983	272
<b>Oil, Soybean</b>									
1995/96	nr	516	6,913	43	7,472	450	37,273	6,108	914
1996/97	nr	914	7,145	24	8,083	922	39,080	6,471	690
1997/98	nr	690	8,229	27	8,946	1,397	43,464	6,922	627
1998/99	nr	627	8,202	37	8,866	1,076	43,262	7,101	689
1999/00	nr	689	8,085	37	8,811	624	42,927	7,283	904
2000/01	nr	904	8,355	33	9,292	636	44,625	7,401	1,255
2001/02	nr	1,255	8,572	21	9,848	1,143	46,259	7,635	1,070
2002/03	nr	1,070	8,360	21	9,451	1,027	43,948	7,748	676
2003/04	nr	676	7,748	139	8,563	425	41,632	7,650	488
2004/05	nr	488	8,782	12	9,282	600	46,160	7,911	771
2005/06	nr	771	9,248	16	10,035	523	47,324	8,147	1,365
2006/07	nr	1,365	9,294	17	10,676	851	49,198	8,426	1,399
2007/08	nr	1,399	9,329	29	10,757	1,349	49,024	8,288	1,120
2008/09	nr	1,120	9,024	23	10,167	1,043	47,491	8,210	914

Data based on Local Marketing Year (MY). Soybeans are on a September/August MY, and Soybean Meal and Oil are on an October/September MY.

**Table 22: Brazil Soybeans and Products Supply and Distribution Local Marketing Years****Thousand Metric Tons**

	<b>Area Harvested</b>	<b>Beginning Stocks</b>	<b>Production</b>	<b>Imports</b>	<b>Total Supply</b>	<b>Exports</b>	<b>Crush</b>	<b>Domestic Consumpti</b>	<b>Ending Stocks</b>
<b>Oilseed, Soybean (Local)</b>									
1995/96	10,950	648	24,150	1,300	26,098	3,633	20,083	21,631	834
1996/97	11,800	834	27,300	1,450	29,584	8,327	18,944	20,658	599
1997/98	13,000	599	32,500	634	33,733	9,325	21,832	23,586	822
1998/99	12,900	822	31,300	616	32,738	8,912	21,645	23,423	403
1999/00	13,600	403	34,700	794	35,897	11,779	21,578	23,502	616
2000/01	13,934	616	39,500	854	40,970	15,521	22,773	24,992	457
2001/02	16,350	457	43,500	1,100	45,057	16,074	25,843	28,302	681
2002/03	18,448	681	52,000	1,124	53,805	19,987	27,796	30,520	3,298
2003/04	21,476	3,298	51,000	364	54,662	19,257	28,914	31,807	3,598
2004/05	22,800	3,598	53,000	352	56,950	22,799	29,730	32,515	1,636
2005/06	22,229	1,636	57,000	40	58,676	24,770	28,754	31,654	2,252
2006/07	20,700	2,252	59,000	108	61,360	23,805	31,511	34,445	3,110
2007/08	21,300	3,110	61,000	150	64,260	25,555	32,220	35,195	3,510
2008/09	21,500	3,510	60,000	150	63,660	25,450	32,000	35,025	3,185
<b>Meal, Soybean (Local)</b>									
1995/96	nr	646	15,835	109	16,590	10,900	20,083	5,242	448
1996/97	nr	448	14,863	305	15,616	9,841	18,944	5,350	425
1997/98	nr	425	17,235	157	17,817	10,861	21,832	6,435	521
1998/99	nr	521	17,000	75	17,596	10,132	21,645	6,870	594
1999/00	nr	594	16,831	119	17,544	9,876	21,578	7,068	600
2000/01	nr	600	17,753	230	18,583	11,110	22,773	7,171	302
2001/02	nr	302	20,392	388	21,082	12,783	25,843	7,596	703
2002/03	nr	703	21,773	337	22,813	13,542	27,796	8,292	979
2003/04	nr	979	22,330	227	23,536	14,596	28,914	8,099	841
2004/05	nr	841	23,040	244	24,125	14,256	29,730	9,133	736
2005/06	nr	736	22,280	214	23,230	12,287	28,754	10,080	863
2006/07	nr	863	24,420	146	25,429	12,346	31,511	11,520	1,563
2007/08	nr	1,563	25,000	175	26,738	12,070	32,220	12,230	2,438
2008/09	nr	2,438	24,800	175	27,413	12,410	32,000	12,800	2,203
<b>Oil, Soybean (Local)</b>									
1995/96	nr	224	3,776	175	4,175	1,323	20,083	2,664	188
1996/97	nr	188	3,527	178	3,893	1,077	18,944	2,662	154
1997/98	nr	154	4,083	197	4,434	1,413	21,832	2,795	226
1998/99	nr	226	4,048	243	4,517	1,519	21,645	2,762	236
1999/00	nr	236	4,036	111	4,383	1,134	21,578	2,971	278
2000/01	nr	278	4,370	87	4,735	1,616	22,773	2,937	182
2001/02	nr	182	4,905	140	5,227	2,100	25,843	2,936	191
2002/03	nr	191	5,349	47	5,587	2,405	27,796	2,897	285
2003/04	nr	285	5,579	14	5,878	2,531	28,914	3,054	293
2004/05	nr	293	5,710	3	6,006	2,697	29,730	3,061	248
2005/06	nr	248	5,520	18	5,786	2,315	28,754	3,171	300
2006/07	nr	300	6,050	62	6,412	2,521	31,511	3,550	341
2007/08	nr	341	6,180	70	6,591	2,370	32,220	3,885	336
2008/09	nr	336	6,140	70	6,546	2,260	32,000	3,968	318

Data based on Brazil's local February/January Marketing Year (MY).  
Where February 2006 - January 2007 is the 2005/06 MY.

**Table 23: Argentina Soybeans and Products Supply and Distribution Local Marketing Years****Thousand Metric Tons**

	<b>Area Harvested</b>	<b>Beginning Stocks</b>	<b>Production</b>	<b>Imports</b>	<b>Total Supply</b>	<b>Exports</b>	<b>Crush</b>	<b>Domestic Consumpti</b>	<b>Ending Stocks</b>
<b>Oilseed, Soybean (Local)</b>									
1995/96	5,980	931	12,480	101	13,512	2,013	9,945	10,535	964
1996/97	6,200	964	11,200	997	13,161	489	10,423	11,055	1,617
1997/98	6,954	1,617	19,500	289	21,406	2,855	16,742	17,499	1,052
1998/99	8,165	1,052	20,000	251	21,303	3,097	17,108	17,933	273
1999/00	8,583	273	21,200	301	21,774	4,109	16,514	17,449	216
2000/01	10,401	216	27,800	291	28,307	7,377	19,507	20,587	343
2001/02	11,400	343	30,000	297	30,640	6,221	22,397	23,597	822
2002/03	12,600	822	35,500	377	36,699	8,809	24,815	26,140	1,750
2003/04	14,000	1,750	33,000	719	35,469	6,799	25,072	26,509	2,161
2004/05	14,400	2,161	39,000	709	41,870	10,686	29,560	31,010	174
2005/06	15,200	174	40,500	1,013	41,687	7,130	32,748	34,223	334
2006/07	16,300	334	48,800	2,336	51,470	12,132	35,962	37,462	1,876
2007/08	16,600	1,876	46,200	3,375	51,451	13,800	35,450	36,971	680
2008/09	18,000	680	50,500	3,450	54,630	15,300	37,000	38,550	780
<b>Meal, Soybean (Local)</b>									
1995/96	nr	2,015	7,955	0	9,970	7,772	9,945	328	1,870
1996/97	nr	1,870	8,390	0	10,260	8,033	10,423	337	1,890
1997/98	nr	1,890	13,440	0	15,330	12,689	16,742	343	2,298
1998/99	nr	2,298	13,438	0	15,736	12,761	17,108	342	2,633
1999/00	nr	2,633	13,113	0	15,746	12,854	16,514	350	2,542
2000/01	nr	2,542	15,492	0	18,034	15,979	19,507	374	1,681
2001/02	nr	1,681	17,762	0	19,443	17,572	22,397	423	1,448
2002/03	nr	1,448	19,667	0	21,115	19,162	24,815	500	1,453
2003/04	nr	1,453	19,741	2	21,196	19,078	25,072	530	1,588
2004/05	nr	1,588	23,350	1	24,939	22,703	29,560	550	1,686
2005/06	nr	1,686	25,582	0	27,268	24,691	32,748	574	2,003
2006/07	nr	2,003	27,856	2	29,861	28,098	35,962	619	1,144
2007/08	nr	1,144	27,820	3	28,967	26,700	35,450	635	1,632
2008/09	nr	1,632	28,935	3	30,570	28,200	37,000	670	1,700
<b>Oil, Soybean (Local)</b>									
1995/96	nr	689	1,758	0	2,447	1,694	9,945	189	564
1996/97	nr	564	1,859	0	2,423	1,770	10,423	208	445
1997/98	nr	445	2,953	0	3,398	2,544	16,742	217	637
1998/99	nr	637	3,118	0	3,755	3,085	17,108	230	440
1999/00	nr	440	3,017	0	3,457	2,837	16,514	242	378
2000/01	nr	378	3,630	0	4,008	3,510	19,507	287	211
2001/02	nr	211	4,165	0	4,376	3,639	22,397	357	380
2002/03	nr	380	4,672	0	5,052	4,245	24,815	389	418
2003/04	nr	418	4,724	0	5,142	4,446	25,072	392	304
2004/05	nr	304	5,558	0	5,862	5,082	29,560	395	385
2005/06	nr	385	6,169	0	6,554	5,665	32,748	402	487
2006/07	nr	487	6,917	0	7,404	6,514	35,962	580	310
2007/08	nr	310	6,761	0	7,071	5,720	35,450	1,045	306
2008/09	nr	306	7,050	0	7,356	5,840	37,000	1,167	349

Data based on Argentina's Local April/March Marketing Year (MY).  
Where April 2006 - March 2007 is the 2005/06 MY.

**Table 24: South East Asia: Oilseeds and Products Supply and Distribution**

Thousand Metric Tons

	2004/05	2005/06	2006/07	2007/08	Oct 2008/09	Nov 2008/09
<b>Production</b>						
Oilseed, Copra	4,200	4,189	3,988	4,347	4,546	4,546
Oilseed, Palm Kernel	8,067	8,456	8,639	9,543	10,219	10,219
Oilseed, Soybean	1,453	1,540	1,510	1,576	1,566	1,566
Other	3,220	3,096	3,210	3,159	3,258	3,258
<b>Total</b>	<b>16,940</b>	<b>17,281</b>	<b>17,347</b>	<b>18,625</b>	<b>19,589</b>	<b>19,589</b>
<b>Imports</b>						
Meal, Fish	157	158	112	123	128	128
Meal, Rapeseed	214	272	380	424	425	435
Meal, Soybean	6,850	8,017	9,060	9,117	9,806	9,756
Other	357	395	561	570	655	605
<b>Total</b>	<b>7,578</b>	<b>8,842</b>	<b>10,113</b>	<b>10,234</b>	<b>11,014</b>	<b>10,924</b>
<b>Imports</b>						
Oil, Palm	1,398	1,970	1,448	1,835	1,870	1,885
Oil, Rapeseed	0	0	0	0	0	0
Oil, Soybean	151	220	241	253	267	267
Oil, Sunflowerseed	0	0	0	0	0	0
Other	408	485	518	515	503	503
<b>Total</b>	<b>1,957</b>	<b>2,675</b>	<b>2,207</b>	<b>2,603</b>	<b>2,640</b>	<b>2,655</b>
<b>Domestic Consumption</b>						
Meal, Fish	572	554	524	541	551	551
Meal, Rapeseed	214	272	380	424	425	435
Meal, Soybean	8,435	9,640	10,516	10,657	11,203	11,153
Other	2,248	2,299	2,532	2,571	2,766	2,737
<b>Total</b>	<b>11,469</b>	<b>12,765</b>	<b>13,952</b>	<b>14,193</b>	<b>14,945</b>	<b>14,876</b>
<b>Domestic Consumption</b>						
Oil, Palm	8,275	8,896	9,545	9,970	10,751	10,766
Oil, Rapeseed	0	0	0	0	0	0
Oil, Soybean	409	456	463	452	467	488
Oil, Sunflowerseed	80	78	78	78	78	78
Other	3,172	3,307	3,250	3,322	3,643	3,681
<b>Total</b>	<b>11,936</b>	<b>12,737</b>	<b>13,336</b>	<b>13,822</b>	<b>14,939</b>	<b>15,013</b>
<b>Industrial Dom. Cons.</b>						
Oil, Palm	2,553	2,807	3,101	3,175	3,566	3,566
Oil, Rapeseed	0	0	0	0	0	0
Oil, Soybean	68	71	69	70	71	71
Oil, Sunflowerseed	0	0	0	0	0	0
Other	2,081	2,252	2,228	2,302	2,488	2,506
<b>Total</b>	<b>4,702</b>	<b>5,130</b>	<b>5,398</b>	<b>5,547</b>	<b>6,125</b>	<b>6,143</b>
<b>Food Use Dom. Cons.</b>						
Oil, Palm	5,370	5,733	6,040	6,395	6,800	6,800
Oil, Rapeseed	0	0	0	0	0	0
Oil, Soybean	341	385	394	382	396	417
Oil, Sunflowerseed	80	78	78	78	78	78
Other	1,073	1,041	1,002	1,005	1,140	1,160
<b>Total</b>	<b>6,864</b>	<b>7,237</b>	<b>7,514</b>	<b>7,860</b>	<b>8,414</b>	<b>8,455</b>
<b>SME</b>						
Meal, Fish	827	801	757	782	796	796
Meal, Rapeseed	152	194	270	302	302	310
Meal, Soybean	8,435	9,640	10,516	10,657	11,203	11,153
Other	1,214	1,211	1,291	1,313	1,371	1,380
<b>Total</b>	<b>10,627</b>	<b>11,845</b>	<b>12,834</b>	<b>13,054</b>	<b>13,672</b>	<b>13,639</b>

Southeast Asia includes Brunei, Burma, Cambodia, Indonesia, Laos, Malaysia, Philippines, Singapore, Thailand, and Vietnam.  
SME - 44 Percent Protein Soybean Meal Equivalent

**Table 25: Middle East Oilseeds and Products Supply and Distribution**  
**Thousand Metric Tons**

	2004/05	2005/06	2006/07	2007/08	Oct 2008/09	Nov 2008/09
<b>Production</b>						
Oilseed, Cottonseed	2,147	2,012	1,877	1,818	1,525	1,525
Oilseed, Rapeseed	0	0	0	0	0	0
Oilseed, Soybean	227	239	269	265	284	284
Oilseed, Sunflowerseed	750	853	954	804	955	955
Other	80	85	77	80	90	90
<b>Total</b>	<b>3,204</b>	<b>3,189</b>	<b>3,177</b>	<b>2,967</b>	<b>2,854</b>	<b>2,854</b>
<b>Imports</b>						
Meal, Fish	47	43	47	50	52	52
Meal, Rapeseed	18	17	6	40	20	50
Meal, Soybean	2,299	2,195	2,520	2,993	3,021	3,001
Other	474	563	693	612	701	631
<b>Total</b>	<b>2,838</b>	<b>2,818</b>	<b>3,266</b>	<b>3,695</b>	<b>3,794</b>	<b>3,734</b>
<b>Imports</b>						
Oil, Palm	2,186	2,410	2,253	2,420	2,637	2,637
Oil, Rapeseed	9	16	6	8	3	7
Oil, Soybean	962	943	706	783	816	816
Oil, Sunflowerseed	238	730	398	448	598	493
Other	71	45	64	71	73	73
<b>Total</b>	<b>3,466</b>	<b>4,144</b>	<b>3,427</b>	<b>3,730</b>	<b>4,127</b>	<b>4,026</b>
<b>Domestic Consumption</b>						
Meal, Fish	52	48	52	55	57	57
Meal, Rapeseed	20	83	78	213	176	230
Meal, Soybean	3,974	4,223	4,560	5,194	5,401	5,372
Other	1,787	1,827	1,957	1,832	1,875	1,780
<b>Total</b>	<b>5,833</b>	<b>6,181</b>	<b>6,647</b>	<b>7,294</b>	<b>7,509</b>	<b>7,439</b>
<b>Domestic Consumption</b>						
Oil, Palm	1,659	1,926	1,781	1,884	2,101	2,101
Oil, Rapeseed	7	63	50	118	111	126
Oil, Soybean	1,218	1,320	1,122	1,218	1,260	1,260
Oil, Sunflowerseed	726	1,027	1,035	940	1,110	1,055
Other	590	566	561	572	557	552
<b>Total</b>	<b>4,200</b>	<b>4,902</b>	<b>4,549</b>	<b>4,732</b>	<b>5,139</b>	<b>5,094</b>
<b>Industrial Dom. Cons.</b>						
Oil, Palm	123	165	179	169	169	169
Oil, Rapeseed	0	48	31	35	25	40
Oil, Soybean	119	236	76	81	87	87
Oil, Sunflowerseed	17	21	22	22	22	22
Other	39	53	61	59	55	55
<b>Total</b>	<b>298</b>	<b>523</b>	<b>369</b>	<b>366</b>	<b>358</b>	<b>373</b>
<b>Food Use Dom. Cons.</b>						
Oil, Palm	1,536	1,761	1,602	1,715	1,932	1,932
Oil, Rapeseed	7	15	19	83	86	86
Oil, Soybean	1,073	1,061	1,023	1,115	1,151	1,151
Oil, Sunflowerseed	693	986	993	896	1,066	1,011
Other	551	513	500	513	502	497
<b>Total</b>	<b>3,860</b>	<b>4,336</b>	<b>4,137</b>	<b>4,322</b>	<b>4,737</b>	<b>4,677</b>
<b>SME</b>						
Meal, Fish	75	69	75	79	82	82
Meal, Rapeseed	14	59	55	152	125	164
Meal, Soybean	3,974	4,223	4,560	5,194	5,401	5,372
Other	1,568	1,612	1,739	1,627	1,681	1,593
<b>Total</b>	<b>5,631</b>	<b>5,963</b>	<b>6,430</b>	<b>7,052</b>	<b>7,290</b>	<b>7,211</b>

Middle East includes Bahrain, Gaza Strip, Iran, Iraq, Israel, Jordan, Kuwait, Lebanon, Oman, Qatar, Saudi Arabia, Syria, Turkey, United Arab Emirates, West Banks, and Yemen.

SME - 44 Percent Protein Soybean Meal Equivalent

**Table 26: European Union (27): Oilseeds and Products Supply and Distribution****Thousand Metric Tons**

	2004/05	2005/06	2006/07	2007/08	Oct 2008/09	Nov 2008/09
<b>Production</b>						
Oilseed, Rapeseed	15,432	15,523	16,092	18,406	19,200	19,200
Oilseed, Soybean	1,086	1,174	1,228	728	650	750
Oilseed, Sunflowerseed	6,463	5,958	6,502	4,771	6,300	6,500
Other	739	803	519	486	399	399
<b>Total</b>	<b>23,720</b>	<b>23,458</b>	<b>24,341</b>	<b>24,391</b>	<b>26,549</b>	<b>26,849</b>
<b>Imports</b>						
Meal, Fish	648	570	527	470	550	550
Meal, Rapeseed	109	84	106	106	80	80
Meal, Soybean	21,910	22,829	22,176	23,900	23,000	22,800
Other	4,623	4,816	4,156	4,040	4,180	4,280
<b>Total</b>	<b>27,290</b>	<b>28,299</b>	<b>26,965</b>	<b>28,516</b>	<b>27,810</b>	<b>27,710</b>
<b>Imports</b>						
Oil, Palm	4,028	4,272	4,347	4,000	3,950	3,950
Oil, Rapeseed	34	316	727	296	175	175
Oil, Soybean	181	717	977	950	720	720
Oil, Sunflowerseed	862	1,235	1,193	1,100	1,370	1,370
Other	1,696	1,665	1,756	1,535	1,709	1,701
<b>Total</b>	<b>6,801</b>	<b>8,205</b>	<b>9,000</b>	<b>7,881</b>	<b>7,924</b>	<b>7,916</b>
<b>Domestic Consumption</b>						
Meal, Fish	893	867	885	822	918	918
Meal, Rapeseed	7,493	8,496	9,100	10,410	11,135	11,135
Meal, Soybean	32,680	32,875	33,192	34,992	33,342	33,315
Other	7,762	7,746	7,235	6,656	7,082	7,201
<b>Total</b>	<b>48,828</b>	<b>49,984</b>	<b>50,412</b>	<b>52,880</b>	<b>52,477</b>	<b>52,569</b>
<b>Domestic Consumption</b>						
Oil, Palm	3,916	4,151	4,256	3,860	3,780	3,780
Oil, Rapeseed	5,247	6,328	7,198	7,774	8,137	8,137
Oil, Soybean	2,210	2,915	3,368	3,287	2,942	2,963
Oil, Sunflowerseed	2,900	3,194	3,287	2,907	3,350	3,238
Other	3,651	3,541	3,606	3,601	3,610	3,609
<b>Total</b>	<b>17,924</b>	<b>20,129</b>	<b>21,715</b>	<b>21,429</b>	<b>21,819</b>	<b>21,727</b>
<b>Industrial Dom. Cons.</b>						
Oil, Palm	1,035	1,265	1,400	950	805	805
Oil, Rapeseed	2,588	3,709	4,768	4,919	5,650	5,650
Oil, Soybean	410	1,122	1,563	1,502	1,175	1,175
Oil, Sunflowerseed	154	192	215	242	253	253
Other	407	411	418	412	420	416
<b>Total</b>	<b>4,594</b>	<b>6,699</b>	<b>8,364</b>	<b>8,025</b>	<b>8,303</b>	<b>8,299</b>
<b>Food Use Dom. Cons.</b>						
Oil, Palm	2,620	2,646	2,656	2,690	2,750	2,750
Oil, Rapeseed	2,653	2,614	2,425	2,850	2,482	2,482
Oil, Soybean	1,670	1,663	1,675	1,655	1,637	1,658
Oil, Sunflowerseed	2,743	3,000	3,069	2,663	3,095	2,983
Other	3,208	3,093	3,152	3,163	3,164	3,167
<b>Total</b>	<b>12,894</b>	<b>13,016</b>	<b>12,977</b>	<b>13,021</b>	<b>13,128</b>	<b>13,040</b>
<b>SME</b>						
Meal, Fish	1,290	1,253	1,279	1,188	1,327	1,327
Meal, Rapeseed	5,331	6,045	6,475	7,407	7,923	7,923
Meal, Soybean	32,680	32,875	33,192	34,992	33,342	33,315
Other	5,545	5,618	5,447	4,834	5,211	5,321
<b>Total</b>	<b>44,846</b>	<b>45,791</b>	<b>46,393</b>	<b>48,421</b>	<b>47,802</b>	<b>47,885</b>

EU-25 includes Austria, Belgium, Bulgaria, Cyprus, Czech Republic, Denmark, Estonia, Finland, France, Germany, Hungary, Ireland, Italy, Latvia, Lithuania, Luxembourg, Malta, Netherlands, Poland, Portugal, Romania, Slovakia, Slovenia, Spain, Sweden, and United Kingdom  
SME - 44 Percent Protein Soybean Meal Equivalent

**Table 27: China Oilseeds and Products Supply and Distribution**

Thousand Metric Tons

	2004/05	2005/06	2006/07	2007/08	Oct 2008/09	Nov 2008/09
<b>Production</b>						
Oilseed, Peanut	14,340	14,340	12,887	13,027	13,600	13,400
Oilseed, Rapeseed	13,182	13,052	10,966	10,573	11,000	11,500
Oilseed, Soybean	17,400	16,350	15,967	14,000	16,500	16,800
Oilseed, Sunflowerseed	1,552	1,927	1,500	1,250	1,500	1,500
Other	11,875	11,130	13,910	14,500	14,300	14,300
<b>Total</b>	<b>58,349</b>	<b>56,799</b>	<b>55,230</b>	<b>53,350</b>	<b>56,900</b>	<b>57,500</b>
<b>Imports</b>						
Meal, Fish	1,582	983	970	1,200	1,325	1,325
Meal, Rapeseed	90	182	328	301	175	200
Meal, Soybean	69	837	32	203	200	200
Other	56	114	51	111	60	60
<b>Total</b>	<b>1,797</b>	<b>2,116</b>	<b>1,381</b>	<b>1,815</b>	<b>1,760</b>	<b>1,785</b>
<b>Imports</b>						
Oil, Palm	4,363	4,975	5,139	5,228	5,900	5,800
Oil, Peanut	0	0	11	10	6	6
Oil, Rapeseed	209	44	330	277	330	330
Oil, Soybean	1,728	1,516	2,404	2,726	2,500	2,500
Oil, Sunflowerseed	36	11	94	2	15	15
Other	357	418	524	519	570	540
<b>Total</b>	<b>6,693</b>	<b>6,964</b>	<b>8,502</b>	<b>8,762</b>	<b>9,321</b>	<b>9,191</b>
<b>Domestic Consumption</b>						
Meal, Fish	1,886	1,265	1,258	1,490	1,628	1,628
Meal, Rapeseed	8,093	8,320	7,479	7,068	7,135	7,330
Meal, Soybean	23,437	27,776	27,255	30,429	32,200	31,990
Other	7,257	7,450	7,584	7,716	7,875	7,875
<b>Total</b>	<b>40,673</b>	<b>44,811</b>	<b>43,576</b>	<b>46,703</b>	<b>48,838</b>	<b>48,823</b>
<b>Domestic Consumption</b>						
Oil, Palm	4,363	4,975	5,139	5,228	5,900	5,800
Oil, Peanut	2,222	2,256	2,007	2,020	2,161	2,161
Oil, Rapeseed	4,756	4,545	4,343	4,139	4,300	4,290
Oil, Soybean	7,203	7,607	8,600	9,613	9,735	9,735
Oil, Sunflowerseed	282	386	329	144	245	245
Other	1,702	1,737	2,047	2,110	2,125	2,097
<b>Total</b>	<b>20,528</b>	<b>21,506</b>	<b>22,465</b>	<b>23,254</b>	<b>24,466</b>	<b>24,328</b>
<b>Food Use Dom. Cons.</b>						
Oil, Palm	2,719	3,075	3,189	3,228	3,800	3,750
Oil, Peanut	2,222	2,256	2,007	2,020	2,161	2,161
Oil, Rapeseed	4,756	4,545	4,343	4,139	4,300	4,290
Oil, Soybean	7,203	7,607	8,600	9,613	9,735	9,735
Oil, Sunflowerseed	282	386	329	144	245	245
Other	1,477	1,490	1,656	1,745	1,715	1,717
<b>Total</b>	<b>18,659</b>	<b>19,359</b>	<b>20,124</b>	<b>20,889</b>	<b>21,956</b>	<b>21,898</b>
<b>SME</b>						
Meal, Fish	2,725	1,828	1,818	2,153	2,352	2,352
Meal, Rapeseed	5,758	5,920	5,321	5,029	5,077	5,215
Meal, Soybean	23,437	27,776	27,255	30,429	32,200	31,990
Other	6,825	7,035	7,007	7,120	7,309	7,309
<b>Total</b>	<b>38,745</b>	<b>42,559</b>	<b>41,401</b>	<b>44,731</b>	<b>46,938</b>	<b>46,867</b>

SME - 44 Percent Protein Soybean Meal Equivalent

**Table 28: India Oilseeds and Products Supply and Distribution**

Thousand Metric Tons

	2004/05	2005/06	2006/07	2007/08	Oct 2008/09	Nov 2008/09
<b>Production</b>						
Oilseed, Cottonseed	8,067	8,088	9,128	10,600	10,400	10,400
Oilseed, Peanut	7,000	6,300	5,385	6,600	6,400	6,400
Oilseed, Rapeseed	6,500	7,000	5,800	5,450	5,800	5,800
Oilseed, Soybean	5,850	7,000	7,690	9,300	9,200	9,200
Oilseed, Sunflowerseed	1,224	1,550	1,280	1,216	1,400	1,400
Other	763	763	633	713	749	749
<b>Total</b>	<b>29,404</b>	<b>30,701</b>	<b>29,916</b>	<b>33,879</b>	<b>33,949</b>	<b>33,949</b>
<b>Imports</b>						
Oil, Cottonseed	0	0	0	0	0	0
Oil, Palm	3,525	2,899	3,800	4,532	4,600	4,600
Oil, Peanut	0	0	0	0	0	0
Oil, Rapeseed	0	0	0	0	0	0
Oil, Soybean	2,026	1,727	1,403	700	900	900
Oil, Sunflowerseed	3	113	152	25	110	110
Other	119	166	175	130	145	145
<b>Total</b>	<b>5,673</b>	<b>4,905</b>	<b>5,530</b>	<b>5,387</b>	<b>5,755</b>	<b>5,755</b>
<b>Domestic Consumption</b>						
Meal, Cottonseed	2,771	2,800	3,090	3,568	3,761	3,761
Meal, Peanut	1,961	1,686	1,477	1,750	1,695	1,695
Meal, Rapeseed	2,577	2,792	2,800	2,012	2,387	2,387
Meal, Soybean	1,426	1,525	1,852	1,920	1,627	1,840
Meal, Sunflowerseed	494	684	558	528	618	618
Other	369	335	294	322	332	332
<b>Total</b>	<b>9,598</b>	<b>9,822</b>	<b>10,071</b>	<b>10,100</b>	<b>10,420</b>	<b>10,633</b>
<b>Domestic Consumption</b>						
Oil, Cottonseed	775	895	947	1,110	1,142	1,142
Oil, Palm	3,406	3,125	3,769	4,612	4,625	4,625
Oil, Peanut	1,726	1,592	1,370	1,570	1,550	1,550
Oil, Rapeseed	2,067	2,296	2,133	1,967	1,989	1,989
Oil, Soybean	2,627	2,938	2,598	2,236	2,300	2,300
Oil, Sunflowerseed	400	625	569	413	563	563
Other	573	635	573	567	601	604
<b>Total</b>	<b>11,574</b>	<b>12,106</b>	<b>11,959</b>	<b>12,475</b>	<b>12,770</b>	<b>12,773</b>
<b>Food Use Dom. Cons.</b>						
Oil, Cottonseed	750	865	915	1,077	1,104	1,104
Oil, Palm	3,196	3,015	3,599	4,432	4,425	4,425
Oil, Peanut	1,700	1,577	1,357	1,555	1,535	1,535
Oil, Rapeseed	2,067	2,296	2,133	1,967	1,989	1,989
Oil, Soybean	2,627	2,938	2,598	2,236	2,300	2,300
Oil, Sunflowerseed	400	625	569	413	563	563
Other	264	279	243	272	276	279
<b>Total</b>	<b>11,004</b>	<b>11,595</b>	<b>11,414</b>	<b>11,952</b>	<b>12,192</b>	<b>12,195</b>
<b>SME</b>						
Meal, Cottonseed	2,245	2,269	2,504	2,891	3,048	3,048
Meal, Peanut	2,204	1,895	1,660	1,967	1,905	1,905
Meal, Rapeseed	1,834	1,987	1,992	1,432	1,698	1,698
Meal, Soybean	1,426	1,525	1,852	1,920	1,627	1,840
Meal, Sunflowerseed	466	646	527	499	584	584
Other	166	150	132	145	149	149
<b>Total</b>	<b>8,341</b>	<b>8,472</b>	<b>8,667</b>	<b>8,853</b>	<b>9,011</b>	<b>9,224</b>

SME - 44 Percent Protein Soybean Meal Equivalent



**Table 29: Oilseed Prices**  
**U.S. Dollars per Metric Ton**

Year Beg Oct 1	Soybean					Peanut		Sunseed		apeseed	Copra
	U.S. 1/	U.S. 2/	Brz 3/	Arg 4/	Rott 5/	U.S. 6/	Rott 7/	U.S. 8/	Rott 9/	Hamb 10/	Rott 11/
<b>Oct - Sep Average</b>											
97/98-06/07	209	213	220	218	256	467	915	252	290	267	374
1997/98	230	233	240	231	259	578	1,055	256	309	296	398
1998/99	176	177	184	179	225	563	847	223	257	227	468
1999/00	173	175	183	180	208	544	820	168	214	190	357
2000/01	167	169	180	175	200	582	888	167	219	202	208
2001/02	170	174	183	179	203	389	700	238	287	220	245
2002/03	209	232	217	221	267	415	963	265	286	285	287
2003/04	291	294	277	285	323	425	976	282	321	317	424
2004/05	217	214	232	228	277	402	915	316	313	262	431
2005/06	205	202	228	227	261	383	857	261	291	292	387
2006/07	254	264	279	279	335	394	1,128	343	401	375	537
<b>2007/08</b>											
Oct	307	340	385	372	450	472	1,415	392	693	521	658
Nov	346	374	411	403	489	478	1,628	406	712	562	748
Dec	367	407	421	437	515	470	1,700	423	711	597	765
Jan	366	440	465	471	541	481	1,700	419	772	643	848
Feb	430	488	494	512	572	463	1,563	534	826	693	921
Mar	423	473	473	514	575	456	1,795	578	922	754	972
Apr	441	465	468	459	558	441	1,795	551	928	704	963
May	445	476	473	461	575	450	1,795	606	749	719	1014
Jun	485	550	550	528	622	443	1,823	622	767	725	1063
Jul	489	521	567	551	634	465	1,850	624	763	682	946
Aug	470	469	492	475	556	417	1,630	611	589	591	780
Sep	393	419	464	446	509	465	1,564	622	511	532	724
<b>Average</b>	414	452	472	469	550	458	1,688	532	745	644	867
<b>2008/09</b>											
*Oct	318	322	368	362	394	437	1,444	511	389	439	585
Nov											
Dec											
Jan											
Feb											
Mar											
Apr											
May											
Jun											
Jul											
Aug											
Sep											
<b>Average</b>	318	322	368	362	394	437	1,444	511	389	439	585

1/ U.S. Farm Price; USDA. 2/ U.S. NO.1 Yellow Cash Central Illinois; Wall Street Journal.  
3/ Rio Grande, Brazil FOB; Safras & Mercado or FOB Paranagua Reuters 4/ Argentina FOB B.Aires;  
Safras & Mercado. or FOB Up River; Reuters 5/ Rotterdam CIF; U.S.; Oil World.  
6/ U.S. Farm Price Inshell USDA. 7/ Rotterdam CIF; US Runners 40/50%, Shelled Basis, Oil World.  
8/ U.S. Farm Price; USDA. 9/ Rotterdam CIF; EC Lower Rhine (Beginning Sep 93) U.S./Canada Prior;  
Oil World. 10/Hamburg CIF; Europe "00" Oil; Oil World.  
11/ Rotterdam CIF; Phillipines/Indonesia; Oil World

\* Preliminary

**Table 30: Protein Meal Prices**  
**U.S. Dollars per Metric Ton**

Year Beg Oct 1	Soybean				Cottonseed U.S. 5/	Sunseed		Peanut U.S. 8/	Fish Hamb 9/	Rapeseed Hamb 10/	Corn Gluten 11/
	U.S. 1/	Brz 2/	Arg 3/	Hamb 4/		U.S. 6/	Rott 7/				
<b>Oct - Sep Average</b>											
97/98-06/07	202	182	162	208	155	96	118	141	678	140	116
1997/98	204	201	174	197	159	93	103	231	686	139	99
1998/99	153	150	130	150	121	72	76	110	442	105	96
1999/00	185	182	159	180	141	83	102	122	407	124	91
2000/01	191	187	168	188	158	100	118	134	459	141	95
2001/02	180	174	157	174	146	95	110	122	592	129	92
2002/03	200	163	152	197	161	101	106	140	598	139	108
2003/04	282	211	188	273	202	122	149	197	649	178	142
2004/05	202	172	157	231	137	94	120	127	665	131	122
2005/06	192	176	158	215	159	85	122	118	1060	129	128
2006/07	226	199	181	276	166	116	178	109	1220	184	190
<b>2007/08</b>											
Oct	287	280	250	400	202	153	289	NA	1,068	272	NA
Nov	309	286	255	414	194	147	280	NA	1,069	260	184
Dec	347	302	277	443	217	175	283	NA	1,088	272	201
Jan	365	349	291	454	302	234	314	NA	1,103	308	212
Feb	381	354	304	469	322	249	326	NA	1,114	345	NA
Mar	365	338	294	489	270	222	330	NA	1,161	359	NA
Apr	364	334	302	541	254	180	317	NA	1,168	327	NA
May	359	339	302	512	265	170	308	NA	1,187	354	NA
Jun	431	406	346	520	323	177	325	NA	1,201	332	NA
Jul	454	395	363	515	367	210	307	NA	1,232	295	NA
Aug	392	338	306	458	320	172	277	NA	1,188	247	NA
Sep	389	326	294	411	322	198	224	NA	1,173	200	NA
<b>Average</b>	370	337	299	469	280	191	298	NA	1,146	298	199
<b>2008/09</b>											
*Oct	287	279	247	358	263	178	152	NA	1,051	156	NA
Nov											
Dec											
Jan											
Feb											
Mar											
Apr											
May											
Jun											
Jul											
Aug											
Sep											
<b>Average</b>	287	279	247	358	263	178	152	NA	1,051	156	NA

1/ Decatur, Average Wholesale 48% Protein; USDA. 2/ Rio Grande, Brazil FOB; Bulk Rate 45-46% Protein Safras & Mercado or Reuters. 3/ Argentina Pellets, FOB B.Aires; Safras & Mercado or FOB Argentina Reuters. 4/ Hamburg FOB Ex-Mill; Oil World. 5/ Memphis FOB; 41% Protein Solvent Extraction; USDA. 6/ Minneapolis FOB; 32% Protein; USDA. 7/ Rotterdam CIF; Argentina-Uruguay Pellet 37-38%; Oil World. 8/ Southeast Mills FOB. 9/ Bremen (Hamburg prior to Mar 2006) 64-65% Protein; Oil World. 10/ Hamburg FOB; Ex-Mill 34% Protein; Oil World. 11/ Rotterdam CIF; Pellets 23-24% Protein; Oil World.  
\* Preliminary  
11/17/2008 7:59:32 AM

**Table 31: Vegetable Oil Prices**  
**U.S. Dollars per Metric Ton**

Year Begin Oct 1	Soybean				Cottonseed		Sunseed		Peanut		Palm	Canola	Coconut	Corn
	U.S. 1/	Brz 2/	Arg 3/	Rott 4/	U.S. 5/	Rott 6/	U.S. 7/	Rott 8/	U.S. 9/	Rott 10/	Malay 11/	Rott 12/	Rott 13/	U.S. 14/
<b>Oct - Sep Average</b>														
97/98-06/07	488	473	471	528	603	635	687	616	998	942	432	584	573	543
1997/98	569	608	614	633	636	693	595	730	1,080	964	601	637	625	638
1998/99	438	452	453	483	602	632	444	560	876	801	486	482	748	558
1999/00	344	328	332	356	474	496	365	413	780	744	309	359	539	393
2000/01	311	295	295	336	352	428	350	428	768	685	235	372	323	299
2001/02	363	376	376	412	396	445	513	587	716	659	329	451	388	422
2002/03	486	489	491	534	832	883	731	592	1,034	1,139	421	588	449	621
2003/04	661	567	542	633	688	752	738	663	1,317	1,178	481	670	630	625
2004/05	507	466	471	545	609	649	962	703	1,171	1,102	392	660	636	614
2005/06	516	474	467	573	649	669	896	635	981	931	416	770	583	555
2006/07	684	673	667	771	787	702	1,279	846	1,253	1,219	655	852	812	701
<b>2007/08</b>														
Oct	840	896	832	1,012	1,151	NA	1,620	1,358	1,692	1,463	848	1,195	1,010	1,157
Nov	941	1,020	1,080	1,138	1,402	NA	1,870	1,401	2,055	1,691	935	1,273	1,131	1,242
Dec	996	1,045	1,105	1,164	1,469	NA	1,907	1,469	2,172	1,777	948	1,386	1,153	1,311
Jan	1,097	1,177	1,160	1,276	1,580	NA	1,984	1,709	2,146	1,861	1,053	1,428	1,285	1,404
Feb	1,250	1,354	1,496	1,400	1,733	NA	2,116	1,839	2,183	1,958	1,192	1,434	1,382	1,651
Mar	1,263	1,346	1,401	1,476	1,740	NA	2,133	1,863	2,205	2,203	1,291	1,519	1,471	1,842
Apr	1,247	1,320	1,388	1,425	1,758	NA	2,050	1,838	2,301	2,200	1,247	1,469	1,443	1,920
May	1,285	1,322	1,240	1,436	1,824	NA	2,147	1,962	2,310	2,318	1,250	1,510	1,502	1,924
Jun	1,376	1,382	1,243	1,537	1,930	NA	2,194	2,045	2,359	NA	1,199	1,577	1,551	1,815
Jul	1,335	1,326	1,273	1,511	1,897	NA	2,150	1,692	2,425	NA	1,115	1,540	1,436	1,690
Aug	1,120	1,110	877	1,322	1,599	NA	2,015	1,319	2,425	2,372	879	1,355	1,193	1,323
Sep	1,016	987	712	1,226	1,377	NA	1,929	1,176	2,425	2,341	743	1,238	1,110	1,074
<b>Average</b>	1147	1190	1151	1327	1622	NA	2,010	1,639	2,225	2,018	1,058	1,410	1,306	1,529
<b>2008/09</b>														
*Oct	783	769	662	928	1,039	NA	1,664	950	2,177	2,118	564	1,053	856	766
Nov														
Dec														
Jan														
Feb														
Mar														
Apr														
May														
Jun														
Jul														
Aug														
Sep														
<b>Average</b>	783	769	662	928	1039	NA	1,664	950	2,177	2,118	564	1,053	856	766

1/ Decatur; Average Wholesale Tank Crude; USDA. 2/ Brazil FOB; Bulk Rate; Safras & Mercado and Reuters  
3/ Argentina FOB; Safras & Mercado and Reuters 4/ Dutch FOB; Ex-Mill; Oil World.  
5/ Valley Points FOB. Tank Cars Crude; USDA. 6/ Rotterdam CIF/FOB Gulf since 1994; US PBSY; Oil World  
7/ Minneapolis FOB; USDA. 8/ EU FOB NW Euro Ports; Oil World. 9/ South East Mills FOB; Tank Cars Crude; USDA.  
10/ Rotterdam CIF; Any Origin; Oil World. 11/ Malaysia FOB;RBD; Porla & Oil World  
12/ Rotterdam, Dutch, FOB Ex-Mill; Oilworld. 13/ Rotterdam CIF; Philippines/Indonesia; Oil World  
14/ Decatur; Crude; AMS and Wall Street Journal.

\* Preliminary