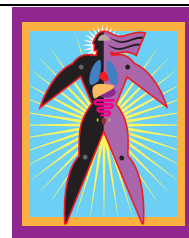


## Expanding the frontiers of women's health research — US style

*Sex analyses in studies can have clinical implications*



IN THE PAST DECADE, biomedical and behavioural research has provided evidential credibility for the field popularly known as “women's health”.<sup>1, 2</sup> During this time, heightened interest and increased resources were given to the study of “conditions unique to women”,<sup>3</sup> and to sex and gender differences in health.<sup>4</sup> These efforts have increased our understanding of the aetiology, prevention, management and health outcomes of many conditions that affect women.<sup>5</sup> In doing so, this research has progressively widened its focus from reproductive conditions to concepts of health throughout women's lives. It has also influenced the culture of science and the paradigms by which scientific studies are now designed and conducted.<sup>1, 6</sup>

Policies for research supported by the US National Institutes of Health (NIH) now mandate the involvement of sufficient numbers of women in studies to determine whether sex/gender differences exist. The US Institute of Medicine of the National Academy of Sciences has recommended that researchers should disclose the sex of origin of cell and tissue cultures used in research; and biomedical journals are beginning to recommend that investigators report analysis of data by sex.<sup>7</sup>

Research continues to document many sex/gender health differences (Box 1 and Box 2) and is beginning to define gender-specific preventive measures, risk factors, or treatments. For example, different clinical manifestations of heart disease in women have been noted,<sup>8</sup> as have potentially fatal sex-based arrhythmias for women in response to some cardiac drugs.<sup>9</sup> Another example of how results from sex analyses in studies can have clinical implications is the demonstration that women are more likely to have a lower threshold for pain and may be more responsive to some analgesics such as kappa-opioids.<sup>10</sup>

In the United States, the drive for dedicated women's health research came from public policy and grassroots activists.<sup>11</sup> In response, the NIH established the Office of Research on Women's Health (ORWH) within the Office of the NIH Director in 1990.<sup>12, 13</sup> The ORWH advises the NIH Director and staff on women's health research matters; ensures that NIH-supported research adequately addresses women's health issues; ensures that women are appropriately represented in biomedical or behavioural research; and, develops opportunities for and supports the involvement and advancement of women in biomedical careers. Other agencies within the US Department of Health and Human Services address aspects of women's health that fall within their mission, including healthcare services, drug regulation, or health policy.<sup>14</sup>

It was subsequent to the initial research agenda on women's health in 1992,<sup>15</sup> that the ORWH emphasised research that encompassed the totality of factors influencing women's health across the life span. Since 1999, with the eight-volume Agenda for research on women's health for the 21st century,<sup>16</sup> increased emphasis is now given to interdisciplinary research, disease prevention, analysis of research

### 1: Definitions

**Sex:** refers to being male or female according to reproductive organs and functions assigned by chromosomal complement

**Gender:** refers to socially defined and derived expectations and roles rooted in biology and shaped by environment and experience

data by sex/gender and the inclusion of diverse populations of women in studies. This is to enable the exploration of factors that contribute to differences in health outcomes and in responses to therapeutic interventions. Research priorities are directed to: the relationships between early life activities and health or ill health in later life; the role of personal behaviours and lifestyle choices in the health and ageing processes (focusing on such issues as obesity, exercise, addiction, and smoking cessation); and many other delineated areas. These include multisystem disorders, mental health and addiction, complementary and alternative medicines, violence and quality of life.

A January 2003 workshop sponsored by the ORWH in Washington, DC, “Science meets reality: recruitment and retention of women in clinical studies and the critical role of relevance”, examined the lessons we have learned from the past decade such as:

- ways to recruit and retain women in clinical studies;
- the importance of community participation in the design and planning of a study to facilitate recruitment of participants from that community;
- how investigators can better communicate with potential volunteers, show respect for vulnerable people and avoid the use of coercive recruitment tactics; and
- the means to ensure that clinical research is relevant and targets questions important to public health.

The workshop also identified emerging ethical and policy issues including:

- the need to appreciate how sex differences should be taken into account in the design of clinical research;
- the shift from the ethics of protectionism (that often resulted in exclusion of women, especially pregnant women or women of childbearing age, from research to “protect” them from harm) to the ethics of inclusion (recognising the need to include women of all ages in studies as long as the potential results would not cause harm);
- concepts of justice in research, such that potentially beneficial research would not just be offered to one group of volunteers or patients, and that all populations subject to a disease or condition have the right to be studied — a concept embodied in the NIH policies requiring the inclusion of women (and minorities) in human subject research; and,
- the differences between clinical care and clinical research.

Finally, one of the most critically important issues is the translation of clinical research into practice, which becomes

## 2: Known sex/gender health differences

**Heart disease:** presentation, outcomes, and responses to intervention

**HIV/AIDS:** manifestations and progression

**Pain:** response to pain and pain therapies

**Depression:** clinical features and management

**Diabetes:** prevalence and care, especially type 2 diabetes

**Musculoskeletal diseases:** incidence and effect; eg, of osteoarthritis, osteoporosis and sports injuries

**Autoimmune diseases:** mortality

especially apparent when research outcomes contradict established clinical practice.<sup>17</sup> This happened in 2002 when the outcomes of the oestrogen/progestin postmenopausal hormone therapy arm of the NIH-funded Women's Health Initiative randomised controlled trial became available.<sup>18,19</sup> The study provided definitive evidence that long-term therapy with combination oestrogen and progestin does not reduce cardiovascular disease in postmenopausal women (as had long been thought), but rather had unexpected results — showing an increased risk for cardiovascular disease as well as an increase in risk for breast cancer. Such studies provide strong justification for continuing research to document risks versus benefits of common, but unproven, approaches to disease prevention and treatment of women. At present, efforts focusing on translating research findings into healthcare include the Specialized Centers of Research on Sex and Gender Factors Affecting Women's Health, an innovative initiative which supports both basic and clinical projects related to research priorities that can advance scientific discoveries from "bench to bedside".<sup>20</sup>

Research on women's health and sex and gender factors is providing the data with which to better arm the physician for possible variations in approaches, drug dosages, or diagnostic practices for not only women but also men. This new knowledge is creating new challenges to ensure that future physicians possess a full understanding of how to better provide gender-appropriate healthcare.<sup>21-23</sup>

### Vivian W Pinn

Associate Director for Research on Women's Health and Director, Office of Research on Women's Health  
National Institutes of Health, US Department of Health and Human Services  
Bethesda, Maryland, USA.  
ORWH-Research@od.nih.gov

**Reprints:** Dr Vivian W Pinn, Office of Research on Women's Health, US Department of Health and Human Services, Building 1, Room 201, National Institutes of Health, Bethesda, MD 20892, USA.

1. Wizemann TM, Pardue M-L, editors. Institute of Medicine Committee on Understanding the Biology of Sex and Gender Differences. Exploring the biological contributions to human health: does sex matter? Washington, DC: National Academy Press, 2001.
2. Pinn VW. Sex and gender factors in medical studies: implications for health and clinical practice. *JAMA* 2003; 289: 397-399.
3. US Department of Health and Human Services, Public Health Service. Women's Health: report of the Public Health Service Task Force on Women's Health Issues, Volume II. DHHS Pub. No. (PHS) 88-5026. Washington, DC: US Government Printing Office, 1987.
4. Fishman JR, Wick JG, Koenig BA. The use of "sex" and "gender" to define and characterize meaningful differences between men and women. Agenda for

- Research on Women's Health for the 21st Century: a report of the Task Force on the NIH Women's Health Research Agenda for the 21st Century. Vol. 2. NIH Pub. No. 99-4386. Bethesda, Md: National Institutes of Health, 1999.
5. Torpy JM, Lynn C, Glass RM. Men and women are different. *JAMA* 2003; 289: 510.
6. Mastroianni AC, Faden R, Federman D, editors. Women and health research: ethical and legal issues of including women in clinical studies. 2 vols. Institute of Medicine. Washington, DC: National Academy Press, 1994.
7. Information for authors. *J Natl Cancer Inst* 2003; 95: 85-88.
8. Shlipak MG, Elmouchi DA, Herrington DM, et al. The incidence of unrecognized myocardial infarction in women with coronary heart disease. *Ann Intern Med* 2001; 134: 1043-1047.
9. Benton RE, Sale M, Glockhart, DA, Woosley RJ. Greater guanidine-induced QTc interval prolongation in women. *Clin Pharmacol Ther* 2000; 67: 413-418.
10. Gear RW, Miaskowski C, Gordon NC, et al. Kappa-opioids produce significantly greater analgesia in women than in men. *Nat Med* 1996; 2: 1248-1250.
11. Pinn VW. Women's health research: progress and future directions. *Acad Med* 1999; 74: 1104-1105.
12. National Institutes of Health Revitalization Act of 1993 (Public Law 103-43), 107, Stat. 22 (codified at 42 U.S.C. 289.a-1), June 10, 1993, at 486(d) (4) (D).
13. US Department of Health and Human Services. National Institutes of Health. NIH Guidelines on the Inclusion of Women and Minorities as Subjects in Clinical Research; Notice. Federal Register, 59: 14508-15413 (March 28, 1994).
14. Pinn VW, Chunko MT. NIH Office of Research on Women's Health and its DHHS partners: meeting challenges in women's health. *J Am Med Women's Assoc* 1999; 54: 15-19.
15. National Institutes of Health, Office of Research on Women's Health. Report of the National Institutes of Health: opportunities for research on women's health. NIH Pub. no. 92-3457. Bethesda, Md: National Institutes of Health, Office of Research on Women's Health, September 1992.
16. National Institutes of Health, Office of Research on Women's Health. A report of the Task Force on the NIH Women's Health Research Agenda for the 21st Century. Vol. 1-8. NIH Pub. No. 99-4386. Bethesda, Md: NIH, 1999.
17. Grunberg SM, Cefalu WT. The integral role of clinical research in clinical care. *N Engl J Med* 2003; 348: 1386-1388.
18. Rossouw JE, Anderson GL, Prentice RL, et al. Risks and benefits of estrogen plus progestin in healthy postmenopausal women: principal results from the Women's Health Initiative randomized controlled trial. *JAMA* 2002; 288: 321-333.
19. Fletcher SW, Colditz GA. Failure of estrogen plus progestin therapy for prevention. *JAMA* 2002; 288: 366-368.
20. National Institutes of Health news release. 11 Institutions to establish Specialized Centers of Research (SCOR) on Sex and Gender Factors Affecting Women's Health. Available at: <http://www.nih.gov/news/pr/oct2002/od-28.htm> (accessed May 2003).
21. Sumaya CV, Pinn VW, Blumenthal SJ. Women's Health in the Medical School Curriculum: report of a survey and recommendations. HRSA-A-OEA-96-1. Rockville, Md: Health Resources and Services Administration, National Institutes of Health, Department of Health and Human Services, 1996.
22. Silverton S, Sinkford J, Inglehart M, et al. Women's Health in the Dental School Curriculum. Women's Health: report of a survey and recommendations. NIH Pub. No. 99-4399. Bethesda, Md: National Institutes of Health, 1999.
23. Health Resources and Services Administration, National Institutes of Health. Women's Health in the Baccalaureate Nursing School Curriculum: report of a survey and recommendations. BHPR-98-0584(P). Rockville, Md: Health Resources and Services Administration, National Institutes of Health, 1998. □

**MJA Reprints • Colour and B/W**  
Make your handouts stand out from the crowd.

Distribute the latest health information to colleagues, students and the media.

Authorised articles printed in the MJA are available as reprints and carry the official MJA logo. Colour reprints are produced on high quality gloss stock.

For more information contact the Editorial Administrator, MJA. Ph: (02) 9562 6666  
Fax: (02) 9562 6662 • Email: [editorial@ampco.com.au](mailto:editorial@ampco.com.au)

