

Transcriptional Control of ADH Genes in the Xylose-Fermenting Yeast *Pichia stipitis*

JAE-YONG CHO† AND THOMAS W. JEFFRIES*

Forest Products Laboratory, U.S. Department of Agriculture, Forest Service, Madison, Wisconsin 53705, and
Department of Bacteriology, University of Wisconsin, Madison, Wisconsin 53706

Received 15 December 1998/Accepted 5 April 1999

The studied the expression of the genes encoding group I alcohol dehydrogenases (*PsADH1* and *PsADH2*) in the xylose-fermenting yeast *Pichia stipitis* CBS 6054. The cells expressed *PsADH1* approximately 10 times higher under oxygen-limited conditions than under fully aerobic conditions when cultivated on xylose. Transcripts of *PsADH2* were not detectable under either aeration condition. We used a *PsADH1:lacZ* fusion to monitor *PsADH1* expression and found that expression increased as oxygen decreased. The level of *PsADH1* transcript was repressed about 10-fold in cells grown in the presence of heme under oxygen-limited conditions. Concomitantly with the induction of *PsADH1*, *PsCYC1* expression was repressed. These results indicate that oxygen availability regulates *PsADH1* expression and that regulation may be mediated by heme. The regulation of *PsADH2* expression was also examined in other genetic backgrounds. Disruption of *PsADH1* dramatically increased *PsADH2* expression on nonfermentable carbon sources under fully aerobic conditions, indicating that the expression of *PsADH2* is subject to feedback regulation under these conditions.

The fundamental mechanisms by which fermentation is regulated appear to differ profoundly in the glucose-fermenting yeast *Saccharomyces cerevisiae* and the xylose-fermenting yeast *Pichia stipitis* (22, 44). Even though the *P. stipitis* structural genes encoding alcohol dehydrogenase (ADH) and pyruvate decarboxylase (PDC) show significant sequence conservation with those of *S. cerevisiae* (9, 28, 32), their regulatory patterns differ. Oxygen availability is largely irrelevant to fermentative metabolism when *S. cerevisiae* is provided with excess glucose (24). Glucose induces high levels of fermentative *S. cerevisiae* ADH (*ADH1*) and represses oxidative ADH (*ADH2*), leading to ethanol production (3). In contrast, glucose does not induce fermentation in the Crabtree-negative yeast *P. stipitis* (6, 38). Efficient conversion of xylose to ethanol requires a limited amount of oxygen (12, 40), but ethanol accumulation does not occur when oxygen is freely available (15, 26, 39). As oxygen becomes limiting, *P. stipitis* PDC and ADH activities increase (16, 31), and malate dehydrogenase activity decreases (39).

The induction of fermentative enzymes by oxygen limitation also is observed in plants. Transcriptional regulation is implicated in the hypoxic synthesis of arabidopsis, barley, and maize ADH (1, 2, 8, 41). Similarly, in the filamentous fungus *Aspergillus nidulans*, *ADH3* is specifically induced in response to periods of anaerobic stress, and its expression is regulated largely at the posttranscriptional level (23). Similar mechanisms may function in *P. stipitis*, because its primary phenomenological response to a lowered aeration rate is to increase fermentative enzymes. The mechanism and extent of this regulation, however, remain obscure, and the means by which its fermentation is regulated by oxygen have not been characterized in detail at the molecular level.

In a previous paper, (9) we described the isolation of two

cytoplasmic ADH (*PsADH*) genes from *P. stipitis*. The results from gene disruption studies suggested that *PsADH1* had both fermentative and respirative functions. However, the simultaneous presence of ethanol-producing and ethanol-oxidizing activities in the cytoplasm could result in a futile cycle. We hypothesized that oxygen-dependent regulation of *PsADH* expression could avoid futile cycling if respirative enzyme activities were repressed and fermentative enzyme activities were induced under oxygen-limited conditions.

Our objective in the present research was to elucidate the physiological signals regulating the expression of the *PsADH* gene(s). Transcription of *PsADH1* appeared to involve regulation by oxygen. If *P. stipitis* requires oxygen for heme synthesis, as in other yeasts (48), the oxygen effect on transcription could be transduced through heme-dependent transcription factors (49). Because heme acts as a regulatory cofactor in the induction and repression of aerobic and hypoxic genes in *S. cerevisiae* (50), we hypothesized that it could be responsible for the repression of the fermentative gene, *PsADH1*. The results reported here show that heme represses expression of *PsADH1* under fermentative conditions. Previous studies had shown that disruption of *PsADH1* increased xylitol production on xylose, so we wanted to know how its disruption affected the levels of *PsADH2* mRNA. Our results showed that *PsADH2* transcription increases significantly in the *Psadh1* disruptant. While posttranscriptional mechanisms possibly affect *PsADH2* expression, feedback regulation of *PsADH2* at the transcriptional level is most likely.

MATERIALS AND METHODS

Strains. *P. stipitis* CBS 6054 was the ultimate origin of all yeast strains. *P. stipitis* PLU20 (*ura3-3/ura3-3 Psleu2Δ-1/Psleu2Δ-1*) was used as a recipient strain for transformations. *Escherichia coli* DH5α (Gibco BRL Gaithersburg, Md.) [*F*⁻ *recA1 endA1 hsdR17* (r, m, -) *supE44 thi-1 gvrA relA1*] was used for all recombinant DNA experiments that required a bacterial host.

Media and culture conditions. Yeasts were routinely grown in yeast-peptone-dextrose (YPD) medium consisting of yeast extract (10 g/liter), peptone (20 g/liter), and glucose (20 g/liter). For cultivation of *ura3* and *leu2* auxotrophs, media were supplemented with 100 mg of uridine and 100 mg of leucine per liter, respectively. Induction studies were carried out in 1.7 g of yeast nitrogen base per liter without ammonium sulfate or amino acids (YNB; Difco, Detroit, Mich.), which was supplemented with Bacto Peptone (6.6 g/liter) plus urea (2.3 g/liter)

* Corresponding author. Mailing address institute for Microbial and Biochemical Technology, Forest Products Laboratory, One Gifford Pinchot Dr., Madison, WI 53705. Phone: (608) 231-9453. Fax: (608) 231-9262. E-mail: twjeffri@facstaff.wisc.edu.

† Present address: Gene Regulation and Chromosome Biology Laboratory, NCI-Frederick Cancer Research and Development Center, ABL-Basic Research Program, Frederick, MD 21702-1201.

(2× nitrogen) and 80 g of D-xylose or glucose per liter, plus leucine, as needed. *P. stipitis* CBS 6054 was grown in fermentative medium containing either 8% xylose or glucose under fully aerobic conditions (200 rpm in a baffled flask) until the cells reached an optical density at 600 nm (OD_{600}) of between 0.8 and 1.0. Oxygen was then limited by centrifuging the cells and inoculating them at a density of 2.4 mg (dry wt)/ml in 50 ml of medium in a 125-ml Erlenmeyer flask shaken at 100 rpm. Cultures were incubated at 25°C. After the shift to oxygen-limited conditions, samples were harvested at various times to monitor the activity of ADH and the level of its mRNA. Comparisons made between samples by Northern blotting, zymogram analysis, and ADH activity were performed with samples prepared at the same time. Yeast transformants were selected on YBN plus 20 g of glucose per liter, without uracil or leucine, when *URA3* or *LEU2* was used as the selectable marker, respectively. For solid media, 20 g of agar per liter was added. *E. coli* cells were grown in Luria-Bertani medium (35) with 50 µg of ampicillin per ml in liquid media or 100 µg of ampicillin per ml in solid media.

Northern analyses. Total RNA was extracted by lysing cells with glass beads in the presence of phenol and sodium dodecyl sulfate. Comparisons between samples by Northern analyses were performed with RNA samples prepared at the same time. Approximately 20 µg of total RNA from each sample was loaded in triplicate onto a 2.2 M formaldehyde-1.2% agarose gel and electrophoresed. After blotting to the positively charged nylon membrane, the blot was cut into two identical pieces and hybridized with radiolabeled *PsADH1*-, *PsADH2*-, and *PsCYC1*-specific oligonucleotides as probes *PsADH1*, 5'-CTCGTCGGAGTGC TGGCAGAAT-3'; *PsADH2*, 5'-TTCGTGAGCAGTGACACAGTAC-3'; and *PsCYC1*, 5'-CITGACCGGACTTTCTGCCCATG-3'. Oligonucleotide probes were γ -³²P-end-labeled with T4 polynucleotide kinase (New England Biolabs., Beverly, Mass.) and purified with a Microspin G-25 column (Pharmacia Biotech, Piscataway, N.J.) to remove unincorporated radionucleotides. RNA concentrations were measured by OD_{260} . Hybridizations were performed with excess probes. We normalized the amount of total RNA loaded into each lane by measuring the relative abundance of rRNA. rRNA levels were analyzed with a Macintosh One scanner with the public domain NIH image program V 1.61 (42). The mRNA levels in cells grown under different growth conditions were measured with a PhosphorImager system (Molecular Dynamics, Sunnyvale, Calif.) relative to those of the rRNAs.

Zymogram analysis. Enzyme activity was visualized essentially as described by Dewey and Conklin (14). Cell extracts were prepared by vortexing cells with glass beads. Protein concentrations were determined by the method of Bradford (5) with the Bio-Rad protein assay as specified by the manufacturer. Proteins were separated on a 5% stacking gel and 10% separating gel by using Tris-HCl buffer (pH 8.3) in the gel and Tris-glycine buffer (pH 8.8) in the electrophoresis vessels, with an applied current of 20 mA/gel at 4°C overnight. Following electrophoresis, ADH enzyme activity was visualized by staining the gel for enzyme activity with a solution of 4.0 mg of phenazine methosulfate, 10.0 mg of nitroblue tetrazolium, 50 mg of NAD⁺, and 0.05 ml of ethanol dissolved in 50 ml of 0.1 M Tris-HCl buffer (pH 8.5). Controls were run in which ethanol or protein was omitted from the aforementioned procedure to test for nonspecific reduction of the tetrazolium dye.

Enzyme assays. ADH activity was assayed according to the method of Bergmeyer (4). The reaction mixture contained 100 mM Tris-HCl buffer (pH 8.3), 2 mM NAD⁺, cell extract (100 to 200 µg of protein), and 0.8 M ethanol, in a total volume of 1 ml. The reaction was started by ethanol addition, and reduction of NAD⁺ was monitored by measuring the increase in OD_{340} . The specific activity was expressed as micromoles of NADH produced per minute per milligram of protein at 25°C.

Plasmids and plasmid constructions. Plasmids pBluescript KSII + (Stratagene, La Jolla, Calif.) and pUC19 were used for cloning DNA fragments. As a reporter gene in *P. stipitis*, we used the *lacZ* gene of *E. coli* from pFusionator (43). The *PsADH1* promoter-*lacZ* fusion gene was constructed as follows. The *KpnI* site in pUC19 was destroyed by treatment with T4 DNA polymerase and ligation reactions to form pUC19-kpn. A 3.0-kbp *BamHI*-*BamHI* fragment containing the *lacZ* gene was excised from pFusionator and cloned into the *BamHI* site of pUC19-kpn to form pGAL. The 598-bp *PsADH1* promoter region and 10 codons of the *PsADH1* coding region were amplified with restriction enzyme-tailed primers (top, *PstI*, 5'-AAACTGCAGAACCGATCCGAGGGGAAAAA CCGGG-3'; bottom, *KpnI*, 5'-CGGGGTACCCGACAACAGCCTTTTGGAGT GG-3') and cut with *PstI* and *KpnI* to be cloned into the corresponding sites of pGAL to form pAB. In the resulting construct, the *BamHI* site in front of the *lacZ* gene was destroyed. As a result, the *PsADH1* promoter and 10 codons of *PsADH1* coding region are fused in frame with the *lacZ* coding sequence. The desired fusion was verified by restriction enzyme digests and sequenced by using a specific oligonucleotide primer from the *lacZ* coding region. A 750-bp *Bgl*/*XbaI* fragment containing the 3' end of the *PsADH2* gene was excised from pJY158 (9) and cloned into the unique *BamHI* site of pAB to form pABA. A 4.35-kbp *PstI*-*XbaI* (blunt) fragment containing the *PsADH1* promoter-*lacZ*-*PsADH2* transcription terminator fusion gene was isolated from pABA constructs and cloned into the *XbaI* (blunt) site of pJM6 (46), an autonomously replicating plasmid, to form pFUS. The resulting plasmid was digested with *SmaI*, and the linker (5'-TGCTCTAGAGCA-3') containing an *XbaI* site was inserted to create an appropriate 5'-overhang restriction site in front of the *PsADH1* promoter sequences for the nested deletions with exonuclease III (New

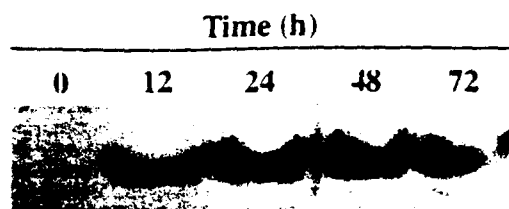


FIG. 1. Zymogram analysis of ADH isozymes from *P. stipitis* CBS 6054 grown on 8% xylose under fully aerobic conditions (0 h) and after shifting to oxygen-limited conditions (12 to 72 h).

England Biolabs). Oligonucleotides were synthesized by Genosys Biotechnologies, Inc. (The Woodlands, Tex.).

Yeast transformation. Lithium acetate transformation of *P. stipitis* PLU20 (*ura3-3/ura3-3 leu2Δ-1/leu2Δ-1*) (29) were performed according to the method described by Ito et al. (21).

β-Galactosidase assays. Expression of the *PsADH1::lacZ* fusion gene was monitored with an *o*-nitrophenyl-β-D-galactopyranoside (ONPG) assay of β-galactosidase activity. Transformed yeast strains were grown in the appropriate selective medium with 8% xylose under fully aerobic conditions and harvest at an OD_{600} of 1.0. One-half of the culture was collected and stored frozen at -70°C. The remaining half was washed once in water and suspended in 50 ml of minimal medium lacking uracil and containing 8% xylose with a starting OD_{600} of 1.0 (≈2.4 g of cells [dry wt]/liter). These cultures were grown for another 4 h at 25°C under oxygen-limited conditions and then collected and frozen at -70°C. Cells grown under aerobic and oxygen-limited conditions were thawed, suspended in 300 µl of Z buffer (60 mM Na₂HPO₄, 40 mM NaH₂PO₄, 10 mM KCl, 1 mM MgSO₄, 50 mM β-mercaptoethanol), and disrupted with glass beads (10). A 50-µl aliquot of extract was assayed with a reaction mixture containing 1 ml of Z buffer and 100 µl of ONPG (4 mg/ml; Sima, St. Louis, Mo). Assays were performed at 25°C. One β-galactosidase unit is defined as the amount of enzyme necessary to cause a change of [1.0 OD_{600} min⁻¹ mg of total protein⁻¹] × 1,000 (27). The total protein concentration was determined as described above. A minimum of four independent transformants were assayed for the fusion construct, and the values are the means of independent determinations from three different assays. The copy number of plasmids in transformants was determined by measuring the relative intensities of plasmid-borne and genomic DNA fragments in southern blots with *LacZ* gene- or *PsADH2* gene-specific oligonucleotides as probes respectively. Radioactive signals were measured with the PhosphorImager system. The plasmid copy number in transformants was found to be constant under the different growth conditions employed in this study (standard errors were <20% [data not shown]).

RESULTS

***PsADH* expression.** We analyzed the expression of the *PsADH* gene(s) in CBS 6054 following growth of the cells under fully aerobic and oxygen-limited conditions. A crude extract of cells grown on xylose under aerobic conditions and shifted to oxygen limitation showed a single major ADH activity in a zymogram analysis. Only one isozyme band was detectable in cells grown on xylose under oxygen-limited conditions (Fig. 1), even after xylose was exhausted from the medium and ethanol had begun to be utilized (72 h). Surprisingly, *PsADH* activity was not detectable when cells were grown on xylose under aerobic conditions, suggesting a negative effect of aerobiosis on the expression of the *PsADH* gene(s).

Regulation of *PsADH1* expression and dependence on oxygen limitation. Total RNA was isolated from cells grown on xylose or glucose at various times following a shift from aerobic to oxygen-limited conditions. The levels of *PsADH1* or *PsADH2* mRNA relative to rRNAs were measured by quantitative Northern analyses with *PsADH1*- or *PsADH2*-specific oligonucleotides as probes. *PsADH1* mRNA was induced following a shift to oxygen limitation (Fig. 2), which induced the ADH activity. No corresponding signals were detectable with the *PsADH2* probe (data not shown). This difference is evidence that the induced ADH activity is *PsADH1*. No (or very low) *PsADH* activity was induced when we maintained cultures under fully aerobic conditions with either xylose or glucose as the carbon

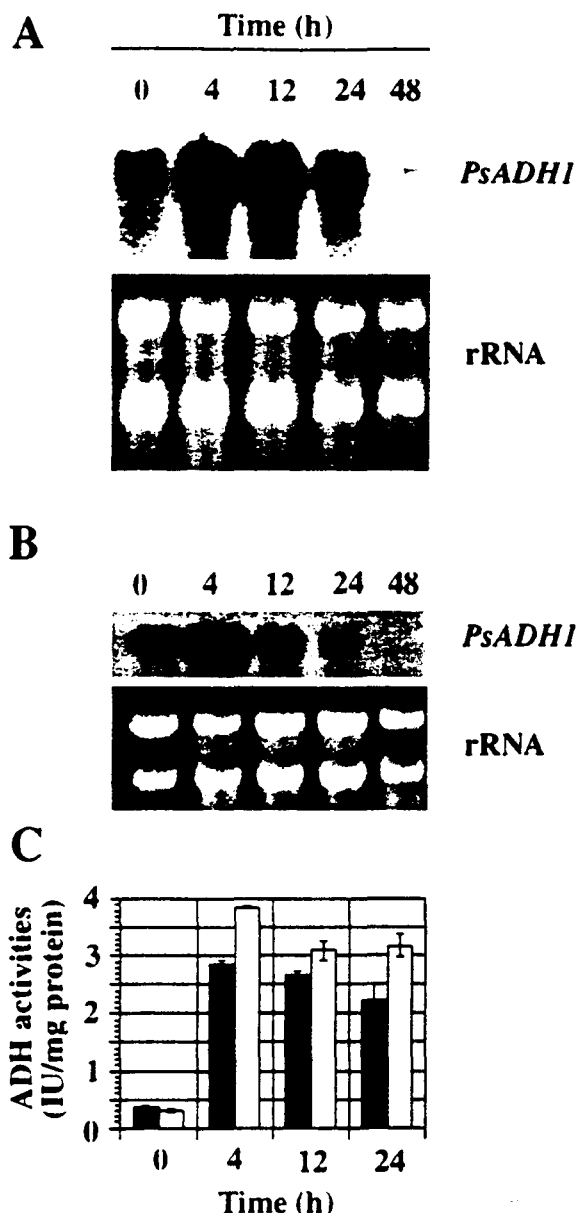


FIG. 2. Induction of *PsADHI* mRNA following a shift to oxygen-limited conditions. CBS 6054 cells were grown in either xyloae (A) or glucose (B) under fully aerobic conditions and shifted to oxygen-limited conditions. Aliquots of cells were harvested at the indicated times, and total RNA was prepared for Northern analysis. Blots were probed with *PsADHI*. The positions of rRNA and *PsADHI* mRNA are indicated. ADH activity (C) was also measured on samples prepared at the same time, as indicated. ■, xylose; □, glucose.

source. To maintain fully aerobic conditions, we kept cell densities low (less than 0.5 g/liter) and agitated the cells in baffled flasks at high speed (200 rpm). Even under such conditions, oxygen became limiting as cell densities increased, and ADH activity was induced. Small, but statistically significant, differences were noted in the titers of ADH activity in cells induced under oxygen limitation on xylose and glucose. Slightly higher levels of ADH activity were observed in cells grown on glucose (Fig. 2C). No statistically significant difference in the transcript levels could be observed with cells grown on these two carbon sources, but under both conditions, the transcript level of *PsADHI* declined while ADH activity remained high. In a

separate experiment, we studied the time course of induction of *PsADHI* mRNA on xylose after shifting to oxygen limitation. The level of *PsADHI* mRNA increased significantly within 30 min after shifting to oxygen limitation and continued to increase steadily up to 4 h (Fig. 3).

As is the case with *PsADHI* mRNA ADH-specific activities relative to cells grown on xylose or glucose under aerobic conditions were approximately 9- to 10-fold higher under oxygen-limited conditions than under fully aerobic conditions. However, the ADH-specific activity remained at induced levels, even after the *PsADHI* mRNA level decreased (cf. Fig. 1 and 2).

We determined the level of β -galactosidase expressed from a *PsADHI::lacZ* fusion gene in order to compare the level of bona fide *PsADHI* mRNA with the level of *PMDHI* gene expression in cells grown on xylose following a shift from aerobic to oxygen-limited conditions. A fusion was constructed between the 598-bp *PsADHI* promoter plus the coding region for the first 10 amino acids of *PsADHI* and the coding region of the *lacZ* gene. The β -galactosidase activity reflects the transcriptional activity of the 598-bp *PsADHI* promoter. The β -galactosidase activity was 2.5 ± 0.15 U under aerobic conditions and 25 ± 0.84 U under oxygen-limited conditions. Activity increased when the level of *PsADHI* mRNA increased, suggesting that the oxygen-dependent regulation of *PsADHI* involves control at the level of transcription. Because β -galactosidase is equally stable under aerobic and anaerobic conditions (18), the increased level of β -galactosidase following a shift to oxygen limitation reflects the transcriptional regulation of *PsADHI*.

Effect of heme addition on *ADHI* expression in oxygen-limited cells. The regulation of *PsADHI* transcription by oxygen could be direct or indirect. To determine whether heme affected the level of *PsADHI* transcript, *P. stipitis* CBS 6054 was grown on xylose under fully aerobic conditions. Because the level of *PsADHI* mRNA reached its maximum within 4 h after the shift to oxygen-limited conditions, we carried out a Northern blot analysis of the *PsADHI* gene 4 h after adding heme and shifting the culture to oxygen-limited conditions. The transcription of *PsADHI* was induced in untreated, oxygen-limited cells (Fig. 4, lane 2), but significantly less *PsADHI* mRNA accumulated in oxygen-limited cells grown in the presence of heme (Fig. 4, lane 4). This result suggests that heme could be a negative cofactor of *PsADHI* transcription. How-

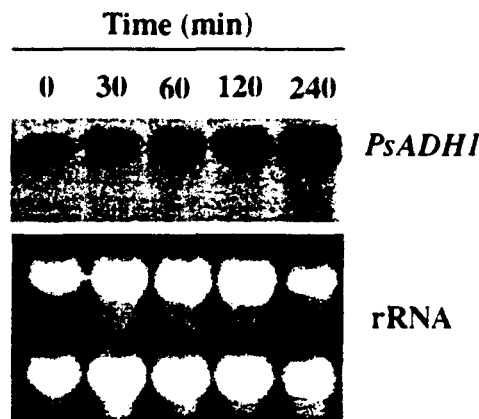


FIG. 3. Kinetics of induction of *PsADHI* mRNA level upon shift to oxygen-limited conditions. Cells were grown on xylose under aerobic conditions (repressed state) until they reached an OD_{600} of 1.0, collected by centrifugation, and shifted to oxygen-limited conditions by suspension in the same medium. Aliquots of cells were taken at the indicated times, and total RNA was prepared for Northern analysis. Blots were probed with *PsADHI*.

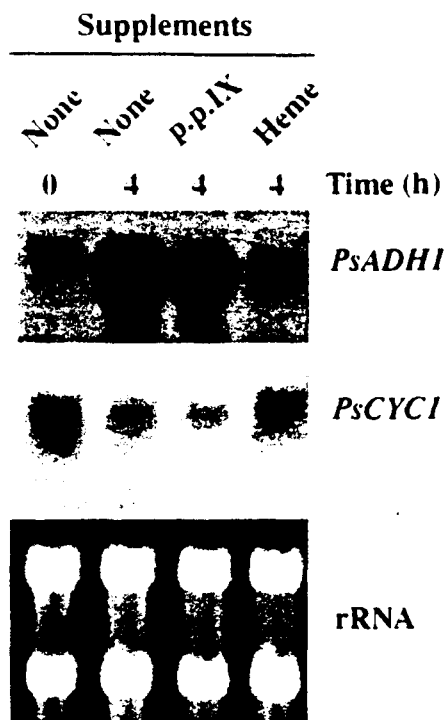


FIG. 4. Effect of heme addition on *PsADH1* and *PsCYC1* expression in aerobic cells. Cells were grown aerobically on xylose until they reached an OD_{600} of 1.0, collected by centrifugation, and shifted to oxygen-limited conditions by suspension in the same medium. After the cells had been shifted to oxygen limitation, heme (50 $\mu\text{g}/\text{ml}$) or protoporphyrin IX (p.p. IX [50 $\mu\text{g}/\text{ml}$]) was added as indicated, and growth was continued under oxygen-limited conditions for 4 h. The RNA blot was hybridized with *PsADH1*- or *PsCYC1*- specific oligonucleotides as probes.

ever, it is possible that heme depressed general mRNA synthesis. Therefore, as a control, we also analyzed the transcriptional level of *PsCYC1*, the *P. stipitis* gene that encodes cytochrome *c*, in the expectation that it would be induced under aerobic conditions (7, 17, 18, 20). The *PsCYC1* transcript, which was repressed after the shift to the oxygen-limited conditions, was clearly present 4 h after the addition of heme (Fig. 4). This result showed that the addition of heme could maintain the transcription of *PsCYC1* during this period and that heme was not toxic to the cells.

A possible effect of heme precursors (protoporphyrin IX) was also tested because heme synthesis requires oxygen only at the penultimate step in the pathway (33), and several porphyrin precursors may occur in oxygen-limited cells and function as activators. Heme precursors (protoporphyrin IX) did not appear to function either as inhibitor or as activator. Therefore, it appears that heme is sufficient to inhibit transcription of *PsADH1* under aerobic conditions.

Effect of *PsADH1* disruption on *PsADH2* expression. The *PsADH2* gene was not, or at best was only poorly, expressed in the wild-type strain when it was grown under either fermentative or respirative conditions. To determine if a *PsADH1* disruption affected the expression of *PsADH2*, we performed Northern analysis of PSU218, a strain in which *Psadh1* is disrupted and in which xylose fermentation is impaired (9). The cells were grown on nonfermentable carbon sources under fully aerobic conditions to the early stationary phase and harvested for RNA preparation.

Disruption of *PsADH1* caused a dramatic increase in *PsADH2* expression in cells grown on a nonfermentable carbon source

under aerobic conditions. *PsADH2* was poorly expressed in wild-type yeast grown on either 2% ethanol or 3% glycerol (Fig. 5), but was expressed at high levels in PSU218 (*psadh1/psadh1*), suggesting that the expression of *PsADH2* compensates at least in part for the missing *PsADH1* activity under these conditions. PSU218 showed no apparent differences in its growth rate on nonfermentable carbon sources when compared with the parental strain (9).

DISCUSSION

ADH activity is induced in *P. stipitis* under oxygen-limited conditions, and this activity corresponds to the product of *PsADH1*. The *PsADH1* gene encodes a functional ADH protein and is inducible by oxygen limitation on xylose or glucose, and this induction is prevented by the addition of heme. This behavior markedly contrasts with that of the corresponding genes in *S. cerevisiae* (13) and *Kluyveromyces lactis* (30, 34, 37), but is itself not surprising levels of various fermentative enzymes in *P. stipitis* were induced by growth on a fermentable carbon source under oxygen-limited conditions (31, 32, 38). Conditions that induce ADH activity also induce the transcription of *PsADH1*. Like the *PsADH1* mRNA, ADH-specific activity relative to cells grown under aerobic conditions was approximately 10-fold higher under oxygen-limited conditions. These results are consistent with the hypothesis that the expression of *PsADH1* is regulated at the transcriptional level. The ADH assay does not distinguish between *PsADH1* and *PsADH2*, but because *PsADH2* mRNA is not observed in the cells grown on xylose under oxygen-limited conditions, enzyme activity largely represents the translation product of *PsADH1*.

Regulation of *PsADH1* transcript levels and of PsADH enzyme titers during oxygen-limited conditions is likely to be complex and there is no a priori reason to expect them to change in parallel. As expected, the *PsADH1* transcript levels rose initially, leading to enhanced synthesis of PsADH protein, which did not decline as rapidly as the corresponding transcript level. Presumably, this is because of its longer half-

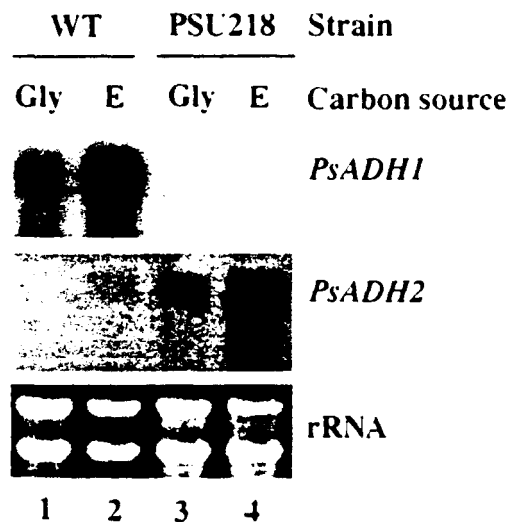


FIG. 5. Effect of *PsADH1* disruption on expression of the *PsADH2* gene during batch growth on nonfermentable carbon sources under fully aerobic conditions. Wild-type (WT) cells (lanes 1 and 2) and cells from PSU218 (lanes 3 and 4) carrying two disrupted *Psadh1* alleles were grown in either glycerol (Gly [lanes 1 and 3]) or ethanol (E [lanes 2 and 4]) medium under aerobic conditions. Total RNA was extracted from these cultures for Northern analysis with *PsADH1*- or *PsADH2*- specific oligonucleotides as probes.

life or because of a delay between mRNA release and accumulation of active enzyme following protein synthesis. Note, however, that the existence of multiple, differentially expressed *PsADH* loci could account for the lack of an exact correlation between the *PsADH1* mRNA level and ADH activities under the conditions employed. In our previously published studies, Southern blot analysis of *P. stipitis* genomic DNA revealed at least three loci with homology to *S. cerevisiae ADH2* (9). Furthermore, the *PsADH* double disruptant, PLU1209, produces residual amount of ethanol from xylose under oxygen-limited conditions, raising the possibility that a third *PsADH* gene is expressed under these conditions.

The results observed through Northern analysis of *PsADH1* expression agreed with the findings with the gene fusion construct. This similarity suggests that transcription plays an important role in regulating the expression of *PsADH1*. Therefore, *PsADH1* expression appears to be responding to oxygen limitation, and it is regulated at the transcriptional level. However, it is not possible to rule out posttranscriptional mechanisms. It is not surprising to see the presence of *PsADH1* mRNA in cells grown on glycerol under fully aerobic conditions, because the transcript level strongly increased in the presence of ethanol (Fig. 5) and *PsADH1* has both fermentative and respirative functions (9).

Heme serves as the prosthetic group in oxygen-binding proteins such as catalases and cytochromes. Its function is intimately entwined with molecular oxygen, and its biosynthesis requires oxygen (49). Heme plays a regulatory role in many different processes in a wide variety of organisms, so it is not surprising that it serves as an intermediate in the signaling mechanism for oxygen levels in yeast cells. Because heme acts as a regulatory coeffecter in the induction and repression of aerobic genes (45, 47), it is likely responsible for the simultaneous repression of the hypoxic gene *PsADH1*. A role for heme in transcriptional regulation of *PsADH1* can be inferred from the observation that there were opposite concomitant changes in the level of *PsCYC1* and *PsADH1* transcripts when heme was added to the culture under oxygen-limited conditions.

Transcripts of *PsADH2* were undetectable in cells grown on xylose under oxygen-limited conditions. Unexpectedly, the disruption of *PsADH1* resulted in elevated expression of *PsADH2* in mutant cells grown on either ethanol or glycerol. On the other hand, such an activation of *PsADH2* expression did not seem to occur in cells grown on xylose under oxygen-limited conditions because the *Psadh1* disruptant strain was not able to utilize xylose to produce ethanol or to contribute significantly to growth (9). Rather, the mutant produced large amounts of xylitol. At present, the role of *PsADH2* and the basis for the physiological response of the cells are not completely understood. However, the mutational effect of *Psadh1* on *PsADH2* expression is reminiscent of feedback regulation of *PDC* expression in *S. cerevisiae* (19, 25, 36). In that instance, a signal for a *PDC5* mRNA is only detectable in the *pdcl* deletion mutant but not in the wild-type cells. Thus, in addition to oxygen-dependent regulation of *PsADH1*, expression of *PsADH2* is subject to feedback regulation. The sharp increase of the *PsADH2* transcript levels in the *Psadh1* disruption mutant suggests that such regulation may occur at the transcriptional level. Alternatively, a posttranscriptional regulation similar to the mechanism described for the autoregulation of tubulin synthesis (11) may function.

Passoth et al. (32) recently reported cloning two genes for ADH from *P. stipitis* CBS 5774 by complementation of an *S. cerevisiae* Adh⁻ mutant. The two genes that they described are virtually identical to the ones we reported earlier (9). However, Passoth et al. numbered them in the opposite order.

PsADH1 in our nomenclature system codes for the principal ADH of *P. stipitis*. It is responsible for ethanol production under oxygen limitation. In this sense, it corresponds to the *ADH1* of *S. cerevisiae*. Passoth et al. (32) also reported preliminary results showing that expression of only one of the two ADH genes could be detected under fermentative conditions. They detected expression of the gene corresponding to our *PsADH2* only under aerobic conditions, and then only at a very low level. Our earlier investigations (9) showed that deletion of *PsADH1* results in xylitol production under oxygen-limited conditions. Our present report shows that expression of *PADH2* increases significantly in the $\Delta adh1$ strain. We infer that *PsADH1* has a higher affinity for NADH than *PsADH2*, but this hypothesis needs to be tested by assessing the biochemical properties of the native proteins.

Further investigations of the promoter region of *PsADH1*, along with site-specific base substitution and promoter reconstruction experiments, will help elucidate the mechanism of transcriptional regulation seen in *P. stipitis*. Because the physiological response of *P. stipitis* to oxygen has been well characterized in fermentation studies, the discovery that it has a system for regulating gene expression in response to oxygen will allow comparative studies of glycolytic regulation between *P. stipitis* and *S. cerevisiae*.

ACKNOWLEDGMENTS

We thank M. Culbertson for providing a pFusionator plasmid and B. Davis for cloning the *PsCYC* gene of *P. stipitis*.

This research was supported by National Renewable Energy Laboratory subcontract XAU-4-11193-02 and by USDA NRICGP grant no. 96-35500-3172.

REFERENCES

- Andrews, D. L., M. C. Drew, J. R. Johnson, and B. G. Cobb. 1994. The response of maize seedlings of different ages to hypoxic and anoxic stress. *Plant Physiol.* **105**:53–60.
- Bailey-Serres, J., and M. Freeling. 1990. Hypoxic stress-induced changes in ribosomes of maize seedling roots. *Plant Physiol.* **94**:1237–1243.
- Bennetzen, J. L., and B. D. Hall. 1982. The primary structure of the *Saccharomyces cerevisiae* gene for alcohol dehydrogenase I. *J. Biol. Chem.* **257**:3018–3025.
- Bergmeyer, H. U. 1983. *Methods of enzymatic analysis*, p. 139. vol. 11, 3rd ed. Verlag Chemie, Weinheim, Germany.
- Bradford, M. M. 1976. A rapid and sensitive method for the quantitation of microgram quantities of protein utilizing the principle of protein-dye binding. *Anal. Biochem.* **72**:248–254.
- Bruinenberg, P. M., P. H. M. de Bot, J. P. van Dijken, and W. A. Scheffers. 1984. NADH-linked aldose reductase: a key to anaerobic alcoholic fermentation of xylose by yeasts. *Appl. Microbiol. Biotechnol.* **19**:256–260.
- Cerdan, M. E., and R. S. Zitomer. 1988. Oxygen-dependent upstream activation sites of *Saccharomyces cerevisiae* cytochrome *c* genes are related forms of the same sequence. *Mol. Cell. Biol.* **8**:2275–2279.
- Chang, C., and E. M. Meyerowitz. 1986. Molecular cloning and DNA sequence of *Arabidopsis thaliana* alcohol dehydrogenase gene. *Proc. Natl. Acad. Sci. USA* **83**:1408–1412.
- Cho, J.-Y., and T. W. Jeffries. 1998. *Pichia stipitis* genes for alcohol dehydrogenase with fermentative and respirative functions. *Appl. Environ. Microbiol.* **64**:1350–1358.
- Ciriacy, M. 1975. Genetics of alcohol dehydrogenase in *Saccharomyces cerevisiae*. *Mutat. Res.* **29**:315–326.
- Cleveland, D. W. 1988. Autoregulated instability of tubulin mRNAs: a novel eukaryotic regulatory mechanism. *Trends Biochem. Sci.* **13**:339–343.
- Delgenes, J. P., R. Moletta, and J. M. Navarro. 1986. The effect of aeration on D-xylose fermentation by *Pachysolen tannophilus*, *Pichia stipitis*, *Kluyveromyces marxianus* and *Candida shehatae*. *Biotechnol. Lett.* **8**:897–900.
- Denis, C. L., J. Ferguson, and E. T. Young. 1983. mRNA levels for the fermentative alcohol dehydrogenase of *Saccharomyces cerevisiae* decrease upon growth on a nonfermentable carbon source. *J. Biol. Chem.* **258**:1165–1171.
- Dewey, N. N., and J. L. Conklin. 1960. Starch gel electrophoresis of lactic dehydrogenase from rat kidney. *Proc. Soc. Exp. Biol. Med.* **105**:492–494.
- du Preez, J. C. 1994. Process parameters and environmental factors affecting D-xylose fermentation by yeasts. *Enzyme Microb. Technol.* **16**:944–956.
- du Preez, J. C., B. van Driessel, and B. A. Prior. 1989. Effect of aerobiosis on

- fermentation and key enzyme levels during growth of *Pichia stipitis*, *Candida shehatae* and *Candida tenuis* on D-xylose. Arch. Microbiol. 152:143-147.
17. Freire-Picos, M. A., C. P. Hollenberg, K. D. Breunig, and M. E. Cerdan. 1995. Regulation of cytochrome *c* expression in the aerobic respiratory yeast *Kluyveromyces lactis*. FEBS Lett. 360:39-42.
 18. Guarente, L., and T. Mason. 1983. Heme regulates transcription of the *CYC1* gene of *Saccharomyces cerevisiae* via an upstream activation site. Cell 32:1279-1286.
 19. Hohmann, S., and H. Cederberg. 1990. Autoregulation may control the expression of yeast pyruvate decarboxylase structural genes *PDC1* and *PDC5*. Eur. J. Biochem. 188:615-621.
 20. Hörtnner, H. G., E. Ammerer, B. Hartter, J. Hamilton, T. Rytka, and H. Billinski Ruis. 1982. Regulation of synthesis of catalase and iso-1-cytochrome *c* in *Saccharomyces cerevisiae* by glucose, oxygen and heme. Eur. J. Biochem. 128:179-184.
 21. Ito, H., Y. Fukuda, K. Murata, and A. Kimura. 1983. Transformation of intact yeast cells treated with alkali cations. J. Bacteriol. 153:163-168.
 22. Jeffries, T. W. 1983. Utilization of xylose by bacteria, yeasts, and fungi. Adv. Biochem. Eng. Biotechnol. 27:1-32.
 23. Kelly, J. M., M. R. Drysdale, H. M. Sealy-Lewis, I. G. Jones, and R. A. Lockington. 1990. Alcohol dehydrogenase III in *Aspergillus nidulans* is anaerobically induced and post-transcriptionally regulated. Mol. Gen. Genet. 222:323-328.
 24. Lagunas, R. 1986. Misconceptions about the energy metabolism of *Saccharomyces cerevisiae*. Yeast 2:221-228.
 25. Liesen, T., C. P. Hollenberg, and J. J. Heinisch. 1996. *ERA*, a novel *cis*-acting element required for autoregulation and ethanol repression of *PDC1* transcription in *Saccharomyces cerevisiae*. Mol. Microbiol. 21:621-632.
 26. Lighthouse, M. E., B. A. Prior, and J. C. du Preez. 1988. The oxygen requirements of yeasts for the fermentation of D-xylose and D-glucose to ethanol. Appl. Microbiol. Biotechnol. 28:63-68.
 27. Lopes, J. M., J. P. Hirsch, D. A. Chorgo, K. L. Schulze, and S. A. Henry. 1991. Analysis of sequences in the *INO1* promoter that are involved in its regulation by phospholipid precursors. Nucleic Acids Res. 19:1687-1693.
 28. Lu, P., B. P. Davis, and T. W. Jeffries. 1998. Cloning and characterization of two pyruvate decarboxylase genes from *Pichia stipitis* CBS 6054. Appl. Environ. Microbiol. 64:94-97.
 29. Lu, P., J. Hendrick, B. P. Davis, and T. W. Jeffries. 1998. Disruption of the β -isopropylmalate dehydrogenase gene *LEU2* of *Pichia stipitis* with *URA3* and recovery of the double auxotroph. Appl. Microbiol. Biotechnol. 49:141-146.
 30. Mazzoni, C., M. Saliola, and C. Falcone. 1992. Ethanol-induced and glucose-insensitive alcohol dehydrogenase activity in the yeast *Kluyveromyces lactis*. Mol. Microbiol. 6:2279-2286.
 31. Passoth, V., M. Zimmermann, and U. Klinner. 1996. Peculiarities of the regulation of fermentation and respiration in the Crabtree-negative, xylose-fermenting yeast *Pichia stipitis*. Appl. Biochem. Biotechnol. 57/58:201-212.
 32. Passoth, V., B. Schäfer, B. Liebel, T. Weierstall, and U. Klinner. 1998. Molecular cloning of alcohol dehydrogenase genes of the yeast *Pichia stipitis* and identification of the fermentative ADH. Yeast 14:1311-1325.
 33. Richter, K., G. Ammerer, E. Hartter, and H. Ruis. 1980. The effect of δ -aminolevulinic acid on catalase T-messenger RNA levels in δ -aminolevulinic acid synthase-defective mutants of *Saccharomyces cerevisiae*. J. Biol. Chem. 255:8019-8022.
 34. Saliola, M., J. R. Shuster, and C. Falcone. 1990. The alcohol dehydrogenase system in the yeast *Kluyveromyces lactis*. Yeast 6:193-204.
 35. Sambrook, J., E. F. Fritsch, and T. Maniatis. 1989. Molecular cloning: a laboratory manual, 2nd ed. Cold Spring Harbor Laboratory Press, Cold Spring Harbor, N.Y.
 36. Schaff, L., J. B. A. Green, D. Gozalbo, and S. Hohmann. 1989. A deletion of the *PDC1* gene for pyruvate decarboxylase of yeast causes a different phenotype than previously isolated point mutations. Curr. Genet. 15:75-81.
 37. Shain, D. H., C. Salvadore, and C. L. Denis. 1992. Evolution of the alcohol dehydrogenase *ADH* genes in yeast: characterization of a fourth *ADH* in *Kluyveromyces lactis*. Mol. Gen. Genet. 232:479-488.
 38. Skoog, K., and B. Hahn-Hägerdal. 1990. Effect of oxygenation on xylose fermentation by *Pichia stipitis*. Appl. Environ. Microbiol. 56:3389-3394.
 39. Skoog, K., H. Jeppsson, and B. Hahn-Hägerdal. 1992. The effect of oxygenation on glucose fermentation with *Pichia stipitis*. Appl. Biochem. Biotechnol. 34/35:369-375.
 40. Slininger, P. J., R. J. Bothast, M. R. Okos, and M. R. Ladisch. 1985. Comparative evaluation of ethanol production by xylose-fermenting yeasts presented high xylose concentrations. Biotechnol. Lett. 7:431-436.
 41. Trick, M., E. S. Dennis, K. J. R. Edwards, and W. J. Peacock. 1988. Molecular analysis of the alcohol dehydrogenase family of barley. Plant Mol. Biol. 21:147-160.
 42. United States National Institutes of Health. 20 December 1996, posting date. [Online.] Image software V 1.61. <http://rsb.info.nih.gov/nih-image/>. [18 to 19 March 1999, last date accessed.]
 43. Ursic, D., D. J. DeMarini, and M. R. Culbertson. 1995. Inactivation of the yeast *Sen1* protein affects the localization of nucleolar proteins. Mol. Gen. Genet. 249:571-584.
 44. van Urk, H., W. S. L. Voll, W. A. Scheffers, and J. P. van Dijken. 1990. Transient-state analysis of metabolic fluxes in Crabtree-positive and Crabtree-negative yeasts. Appl. Environ. Microbiol. 56:281-287.
 45. Verdieri, J., M. Gaisne, and R. Labbe-Bois. 1991. *CYP1 HAP1* is a determinant effector of alternative expression of heme-dependent transcription in yeast. Mol. Gen. Genet. 228:300-306.
 46. Yang, V. W., J. A. Marks, B. P. Davis, and T. W. Jeffries. 1994. High-efficiency transformation of *Pichia stipitis* based on its *URA3* gene and a homologous autonomous replication sequence. ARS2. Appl. Environ. Microbiol. 60:4245-4254.
 47. Zagorec, M., J. M. Buhler, I. Treich, T. Keng, L. Guarente, and R. Labbe-Bois. 1988. Isolation, sequence and regulation by oxygen of the yeast *HEM13* gene coding for coproporphyrinogen oxidase. J. Biol. Chem. 263:9718-9724.
 48. Zagorec, M., and R. Labbe-Bois. 1986. Negative control of yeast coproporphyrinogen oxidase synthesis by heme and oxygen. J. Biol. Chem. 261:2506-2509.
 49. Zitomer, R. S., and C. V. Lowry. 1992. Regulation of gene expression by oxygen in *Saccharomyces cerevisiae*. Microbiol. Rev. 56:1-11.
 50. Zitomer, R. S., J. W. Sellers, D. W. McCarter, G. A. Hastings, P. Wick, and C. V. Lowry. 1987. Elements involved in oxygen regulation of the *Saccharomyces cerevisiae* *CYC7* gene. Mol. Cell. Biol. 7:2212-2220.