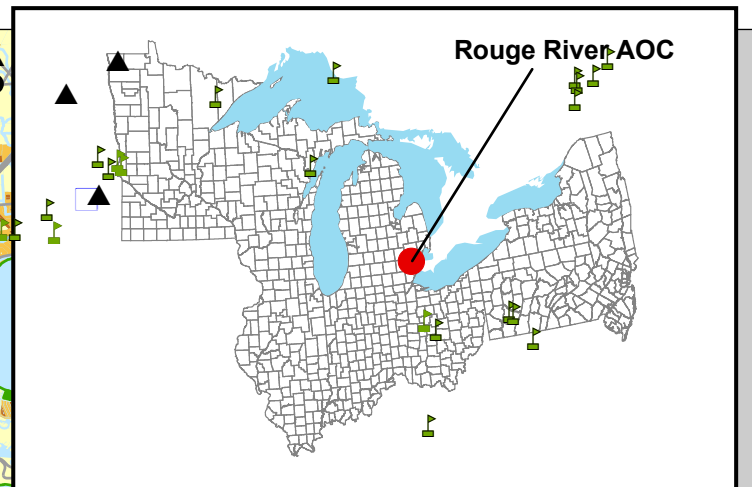
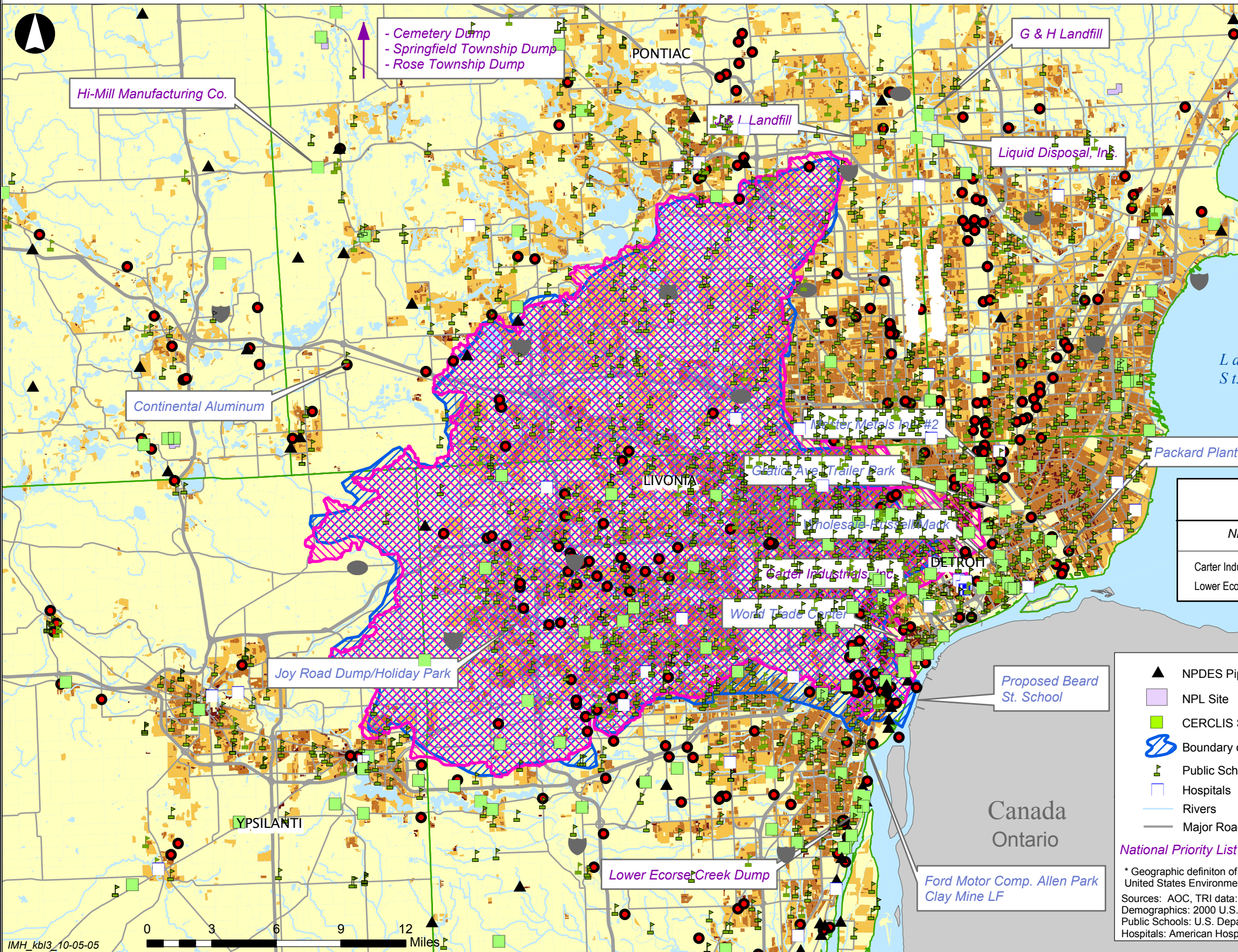


Rouge River Area of Concern Wayne and Oakland Counties, Michigan

Great Lakes
Areas of Concern



County Demographic Profile

Children 6 Years and Younger	113971	219731
Females Aged 15 - 44	261556	454698
Adults 65 Years and Older	134969	248982

Demographic Profiles:
1 Mile Radius from NPL Site

NPL Site	Children 6 Year and Younger	Females Aged 15 - 44	Adults 65 Year and Older
Carter Industries	1444	3199	173
Lower Ecorse Creek Dump	1685	3967	2501

▲ NPDES Pipeline Location
 ■ NPL Site
 ■ CERCLIS Site
 B Boundary of AOC*
 P Public Schools
 H Hospitals
 R Rivers
 M Major Roads

● 2000 TRI Chemical Release Information (in pounds)
 ● 0 - 99,999
 ● 100,000 - 999,999
 ● 1,000,000 - 25,000,000

■ Population Density by Census Block (persons / sq. mile)
 ■ 0 - 1500
 ■ 1501 - 5000
 ■ 5001 - 15000
 ■ 15001 - 40000

B Revised EPA Boundary of AOC (2007)

National Priority List (NPL) Sites Non-NPL Sites having 1, 2, or 3 Hazard Category Code
 * Geographic definition of AOC based on description from the United States Environmental Protection Agency, (USEPA). Final version pending.
 Sources: AOC, TRI data: United States Environmental Protection Agency;
 Demographics: 2000 U.S. Census Bureau;
 Public Schools: U.S. Department of Education, 1999 - 2000;
 Hospitals: American Hospital Association, 2001.

