

# Motor Vehicle Use Map

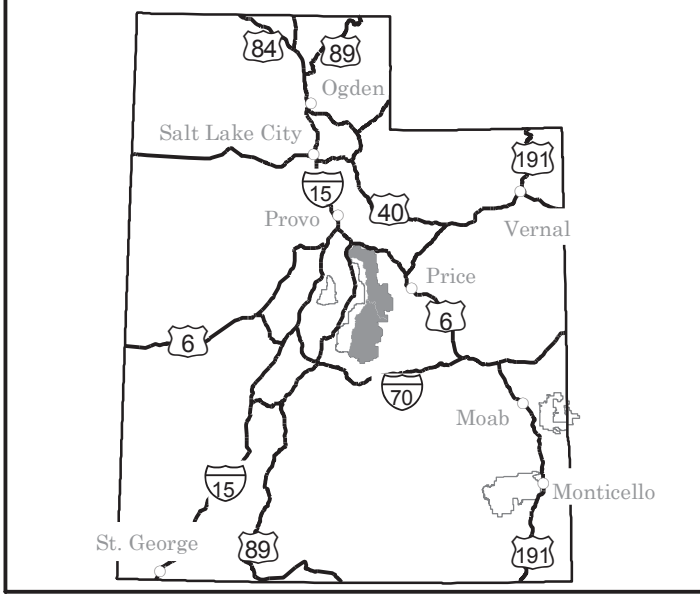
## Manti-La Sal National Forest

### Ferron Price Ranger District



America's Great Outdoors  
Utah 2008  
Forest Service  
United States Department of Agriculture

#### VICINITY MAP



#### INFORMATION SOURCES

Manti-La Sal National Forest  
Supervisor's Office  
599 West Price River Drive  
Price, UT 84501  
435-637-2817

Sanpete Ranger District Moab Office  
540 North Main Street 62 East 100 North  
Ephraim, UT 84627 Moab, UT 84532  
435-283-4151 435-259-7155

Ferron-Price Ranger District Monticello Office  
115 West Canyon Road Monticello, UT 84535  
Ferron, UT 84523 435-587-2041  
435-384-6372

For Specific Road and Trail Opening Dates check  
<http://www.fs.fed.us/mantisal/>

For Emergency Services  
Dial 911



Travel and recreate with minimum impact.  
Respect the environment and the rights of others.  
Educate yourself, plan and prepare before you go.  
Allow for future use of the outdoors by leaving it better than you found it.  
Discover the rewards of responsible recreation.  
For more information on Tread Lightly!, go to [www.treadlightly.org](http://www.treadlightly.org) or call 1-800-956-9900.

#### PURPOSE AND CONTENTS OF THIS MAP

This map dated 03/27/2008 shows the National Forest System roads, National Forest System trails, and the areas on National Forest System lands in the Manti-La Sal National Forest that are designated for motor vehicle use pursuant to 36 CFR 212.51. The map also contains a list of those designated roads, trails, and areas that enumerate the types of vehicles that are allowed on each route and in each area and any seasonal restrictions that apply on those routes and in those areas.

Designation of a road, trail, or area for motor vehicle use by a particular class of vehicle under 36 CFR 212.51 should not be interpreted as encouraging or inviting use, or to imply that the road, trail, or area is passable, actively maintained, or safe for travel. Motor vehicle designations include parking along designated routes and at facilities associated with designated roads and trails impassable for extended periods. Seasonal weather conditions and natural events may render designated roads and trails impassable for extended periods. Designated areas may contain dangerous or impassable terrain. Many designated roads and trails may be passable only by high-clearance vehicles or four-wheel drive vehicles. Maintenance of designated roads and trails will depend on available resources, and many may receive little maintenance.

This motor vehicle use map identifies those roads, trails, and areas designated for the motor vehicle use under 36 CFR 212.51 for the purpose of enforcing the prohibition at 36 CFR 261.13. This is a limited purpose. Other public roads are shown for information and navigation purposes only and are not subject to designation under the Forest Service travel management regulation.

**These designations apply only to National Forest System roads, National Forest System trails, and areas on National Forest System lands.**

#### PROHIBITIONS

It is prohibited to possess or operate a motor vehicle on National Forest System lands on the Manti-La Sal National Forest other than in accordance with these designations (36 CFR 261.13).

Violations of 36 CFR 261.13 are subject to a fine of up to \$5,000 or imprisonment for up to 6 months or both (18 U.S.C. 3571(e)). This prohibition applies regardless of the presence or absence of signs.

This map does not display nonmotorized uses, over-snow uses, or other facilities and attractions on the Manti-La Sal National Forest. Obtain a forest visitor map for more complete information.

Designated roads, trails, and areas may also be subject to temporary, emergency closures, and visitors must comply with signs notifying them of such restrictions. A national forest may issue an order to close a road, trail, or area on a temporary basis to protect the life, health or safety of forest visitors or the natural or cultural resources in these areas. Such a temporary and/or emergency closure is consistent with the Travel Management Rule (36 CFR 212.52 (b); 36 CFR 261 (subpart B)).

The designator "road or trail open to all motor vehicles" does not supersede vehicle size or weight limits imposed through State traffic law.

#### OPERATOR RESPONSIBILITIES

Operating a motor vehicle on National Forest System roads, National Forest System trails, and in areas on National Forest System lands carries a greater responsibility than operating that vehicle in a city or other developed setting. Not only must the motor vehicle operators know and follow all applicable traffic laws, but they need to show concern for the environment as well as other forest users. The misuse of motor vehicles can lead to the temporary or permanent closure of any designated road, trail, or area. Operators of motor vehicles are subject to State traffic law, including State requirements for licensing, registration, and operation of the vehicle in question.

Motor vehicle use, especially off-highway vehicle use, involves inherent risks that may cause property damage, serious injury, and possibly death to participants. Riders should drive cautiously and anticipate rough surfaces and features, such as snow, mud, vegetation, and water crossings common to remote driving conditions. Participants voluntarily assume full responsibility for these damages, risks, and dangers. Motor vehicle operators should take care at all times to protect themselves and those under their responsibility.

Much of the Manti-La Sal National Forest is remote, and medical assistance may not be readily available. Cellular telephones do not work in many areas of the Manti-La Sal National Forest. Operators should take adequate food, water, first aid supplies, and other equipment appropriate for the conditions and expected weather.

**ALWAYS REMEMBER TO RESPECT PRIVATE LAND!**  
**PROTECT YOUR PRIVILEGE. STAY ON DESIGNATED ROADS AND TRAILS AND IN DESIGNATED AREAS.**

Read and understand this map in its entirety. If you have questions please contact the Manti-La Sal National Forest for clarification.

Road, trail, and area users must comply with this map, as well as all Federal, State, and local laws and regulations. Compliance with these rules is the responsibility of the user.

#### EXPLANATION OF LEGEND ITEMS

**Roads Open to Highway Legal Vehicle Only:**  
These roads are open only to motor vehicles licensed under State law for general operation on all public roads within the State.

**Roads Open to All Vehicles:**  
These roads are open to all motor vehicles, including smaller off-highway vehicles that may not be licensed for highway use (but not to oversized or overweight vehicles under State traffic law).

**Trails Open to All Vehicles:**  
These trails are open to all motor vehicles, including both highway legal and non-highway legal vehicles.

**Trails Open to Vehicles 50' or Less in Width:**  
These trails are open only to motor vehicles less than 50 inches in width at the widest point on the vehicle.

**Trails Open to Motorcycles Only:**  
These trails are open only to motorcycles. Sidecars are not permitted.

**Seasonal Designation:**  
This symbol, used in conjunction with one of the other road or trail symbols, indicates that the road or trail is open only during certain portions of the year. Refer to the Seasonal and Special Designation Table for further instructions.

**Motorized Trail Access:**  
This symbol indicates a trail head for access to a motorized route. Not all motorized routes have trail heads and those that do may range from primitive to developed.

**LEGEND**

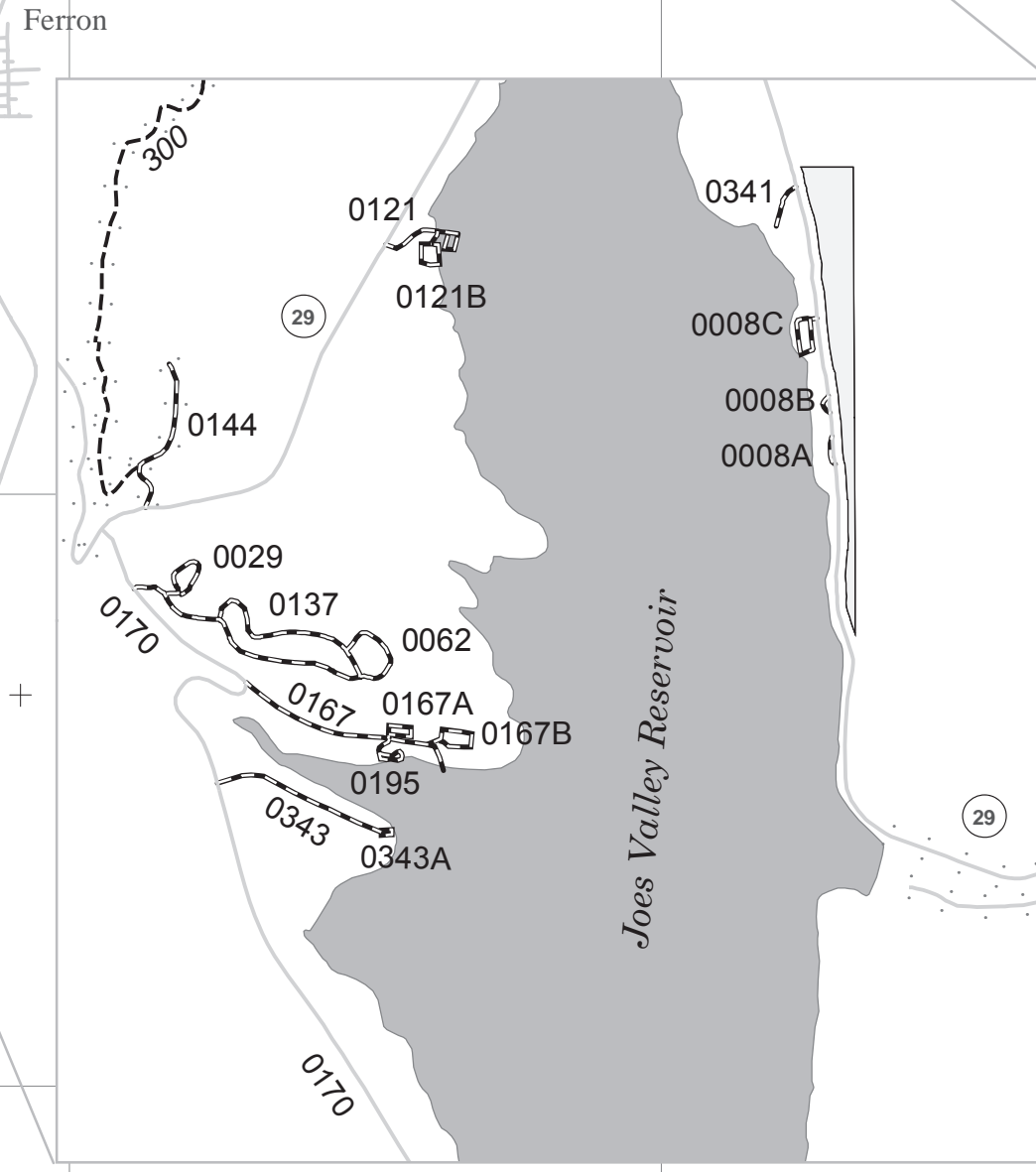
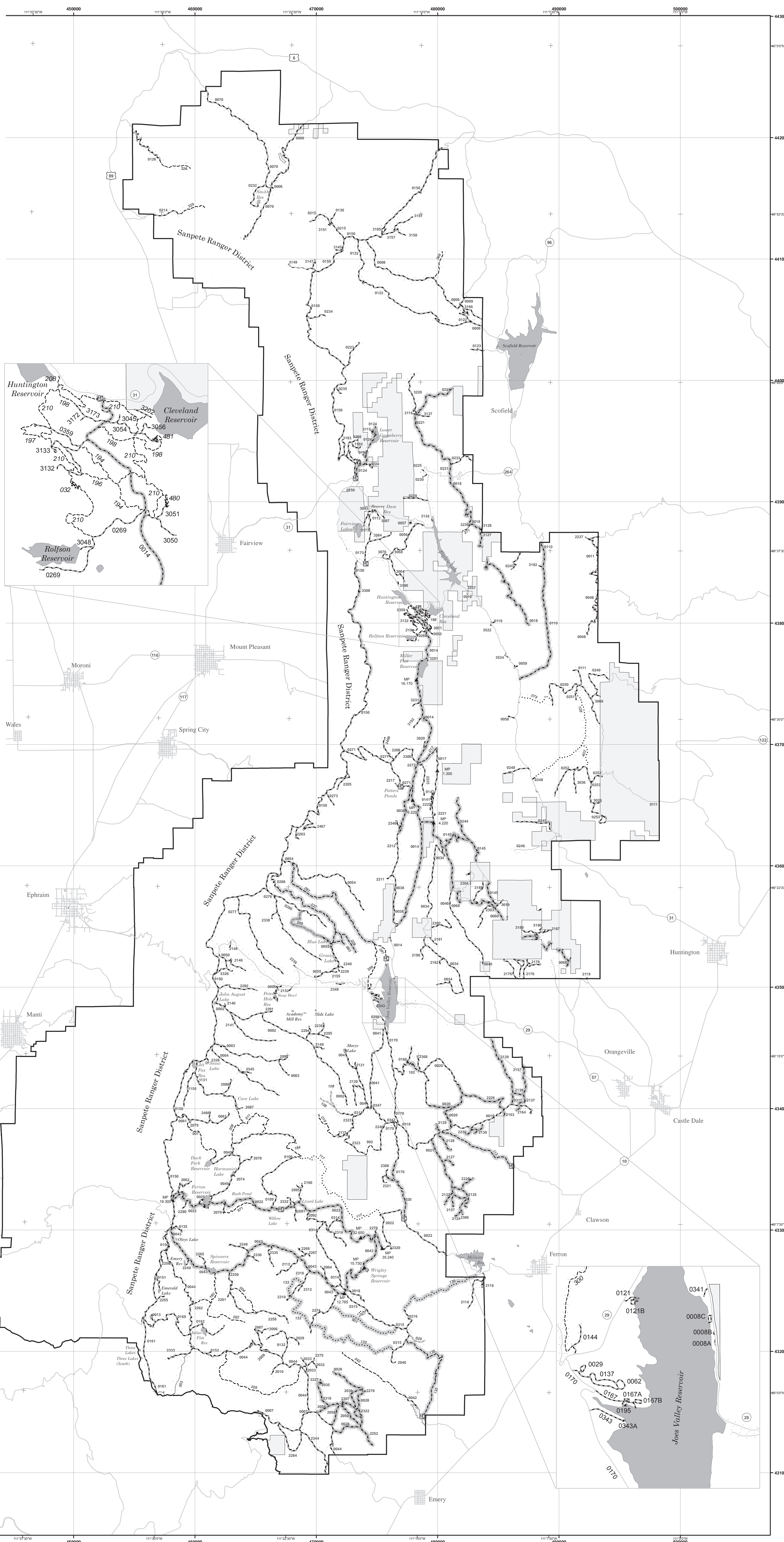
- Roads Open to Highway Legal Vehicle Only
- Roads Open to All Vehicles
- Trails Open to All Vehicles
- Trails Open to Vehicles 50' or Less in Width
- Trails Open to Motorcycles Only
- Dispersed Camping - 150' from the centerline of designated road or trail (Use along with road and trail symbols listed above)
- Special Designation, Yearlong (See Table)
- Seasonal Designation (See Table) (Use along with road and trail symbols above)
- Other Public Roads
- Motorized Trail Access
- Forest or Unit Boundary
- Non-National Forest System Lands within this National Forest
- Lakes

Scale: 0 1 2 3 4 5 Miles  
1:128,720

**BLANKET STATEMENTS FOR TRAVEL MANAGEMENT**

Motor vehicle use off of designated roads and trails for the purpose of dispersed camping is permitted for up to 150 feet from the centerline of the road or trail from the period 01/01 to 12/31, where designated on the Motor Vehicle Use Map.

The U.S. Department of Agriculture (USDA) prohibits discrimination in all its programs and activities on the basis of race, color, national origin, age, disability, and where applicable, sex, marital status, familial status, parental status, religion, sexual orientation, genetic information, political beliefs, reprisal, or because all or part of an individual's income is derived from any public assistance program. (Not all prohibited bases apply to all programs.) Persons with disabilities who require alternative means for communication of program information (Braille, large print, audiotape, etc.) should contact USDA's TARGET Center at (202) 720-2600 (voice and TDD). To file a complaint of discrimination, write to USDA, Director, Office of Civil Rights, 1400 Independence Avenue, S.W., Washington, D.C. 20250-9410, or call (800) 795-3272 (voice) or (202) 720-6382 (TDD). USDA is an equal opportunity provider and employer.



North American Datum of 1983 (NAD 83)  
Universal Transverse Mercator, zone 12