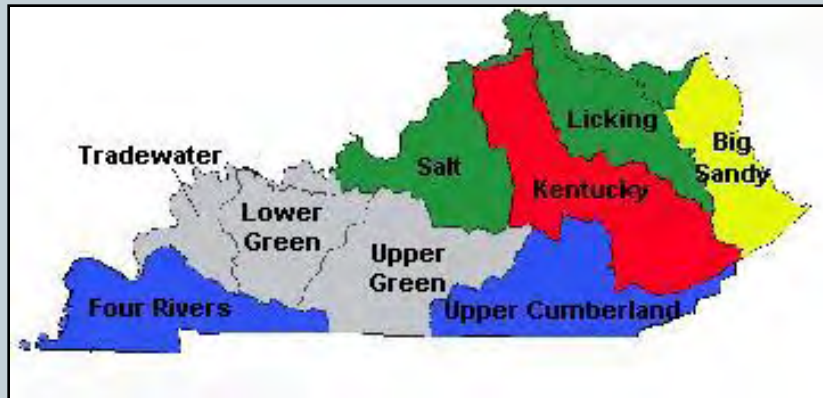


Extension's Role in Developing Watersheds



STEPHANIE JENKINS
DOUG MCLAREN
ASHLEY OSBORNE
MARTHA YOUNT



University of Kentucky
College of Agriculture

Kentucky Facts



- Approximately ½ Forested
- 89,000+ Miles of Streams and Rivers
- 637,000 Acres of Wetlands
- 40-50 Inches of Rainfall Per Year
- 1.8 million Acres are Affected by Surface Mining



Water Pioneers Program



Goals of Water Pioneers Program

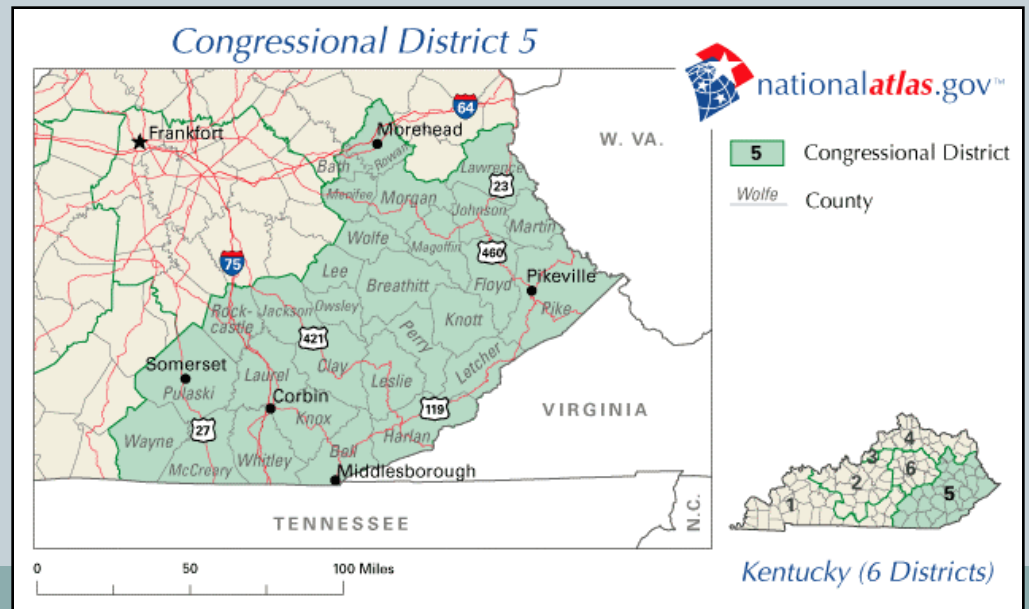


- Increasing awareness of pollution in small Appalachian communities;
- Improving regional education about water quality and pathogen problems;
- Partnering with government, non-profit, and local groups to increase awareness of water quality issues;
- Potentially changing behaviors in focused areas;
- Potentially impacting 3,000-5,000 Eastern Kentucky citizens; and
- Improving Water Quality

Water Pioneers Partnerships



- UK Robinson Scholars Program
- Eastern Kentucky PRIDE
- UK ENRI Task Force
- UK Cooperative Extension Service
- UK Kentucky Water Resources Research Institute
- Copperhead Consulting



Water Pioneers Instructional Program



- Watershed Investigation
 - Understanding the components of a watershed
 - Human Effects
 - Watershed Remediation
 - Biological Indicators/
Field Studies
- Leadership and Outreach Activities





Water Pioneers Community Service Projects



- Students will investigate the needs of a local watershed in their county
- Students will partner with Eastern Kentucky PRIDE Coordinator, Solid Waste Coordinator, Water Watch Volunteer, and others
- The students will participate and provide some leadership in organizing an event or project to improve water quality in their counties

Water Pioneers Community Service Projects



- Tanner Stevens: *Carter Cave Water Testing Project*
- Kenny Craft: *Hindman Elementary Workshop for 5th and 6th graders*
- Regina Rice: *Rockcastle Middle School 8th Grade Presentation*
- Miranda Lindsey: *Wallens Middle School Presentation*

Water Pioneers Summit



- Students will provide an educational opportunity to increase awareness of Best Management Practices for water quality in their respective counties
- Audience will include local officials, school administrators, interest groups, and parents

Kentucky Forest Leadership Program



Kentucky Forest Leadership Program



Kentucky Forest Leadership Program

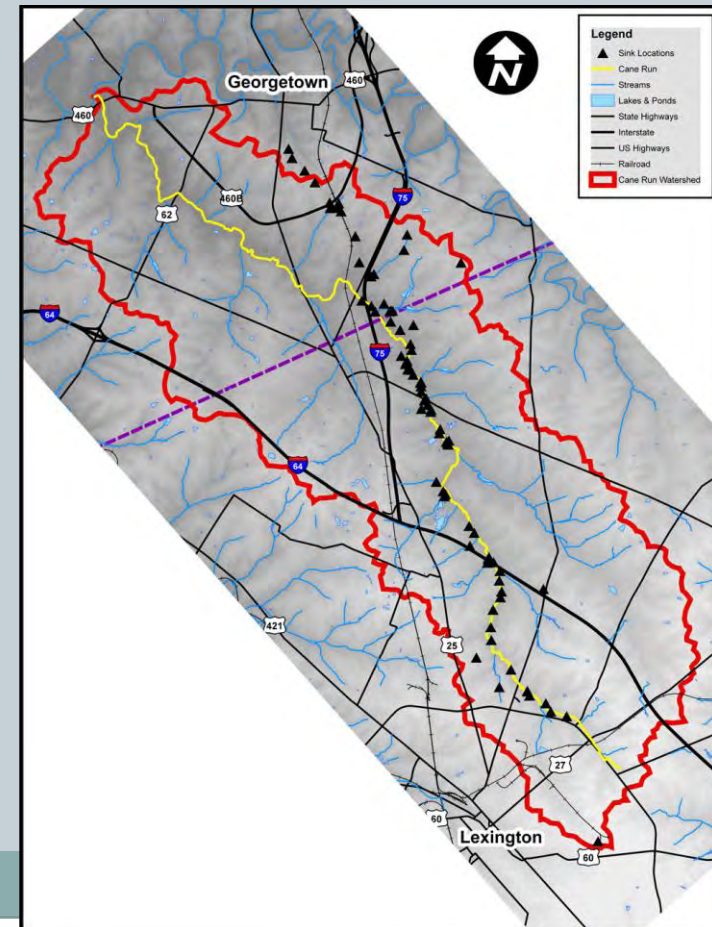




***Cane Run
Watershed***

Cane Run Watershed Project

- Selected as one of five priority watersheds in KY for Restoration and Management
- Majority of watershed recharges the Royal Spring aquifer
 - Water supply for city of Georgetown
- Listed as Impaired
 - Sediment
 - Pathogens
 - Nutrients



Cane Run Watershed Project



Cane Run Watershed Project



Cane Run Watershed Project



Cane Run Watershed Project



CANE RUN WATERSHED

Bluegrass Partnership Green Community

Kentucky American Water

UK UNIVERSITY OF KENTUCKY College of Agriculture

What is a Watershed?
A watershed is a land area that drains water to a common lake or stream.

Breathitt County Watershed Programs











Creek Study Robinson Forest 2007



Breathitt County Watershed Programs Cy-Bend Group Picture



Questions?

