

- Location: 630 W. Broadway Idaho Falls, ID 83402
 - Hours: 8:00-5:00
 - Saturdays (Summer only): 9:00-3:00



Eastern Idaho Visitor's Center

Three Agencies To Help Serve You.

•Forest Service
(208) 523-3278



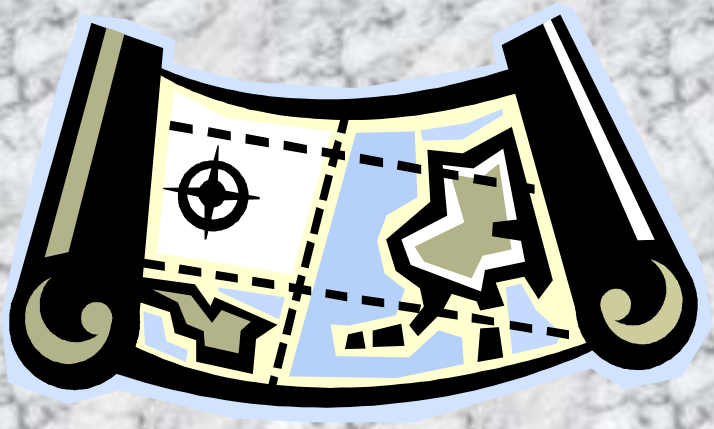
•Chamber of Commerce
(208) 523-1010

•BLM
(208) 523-1012



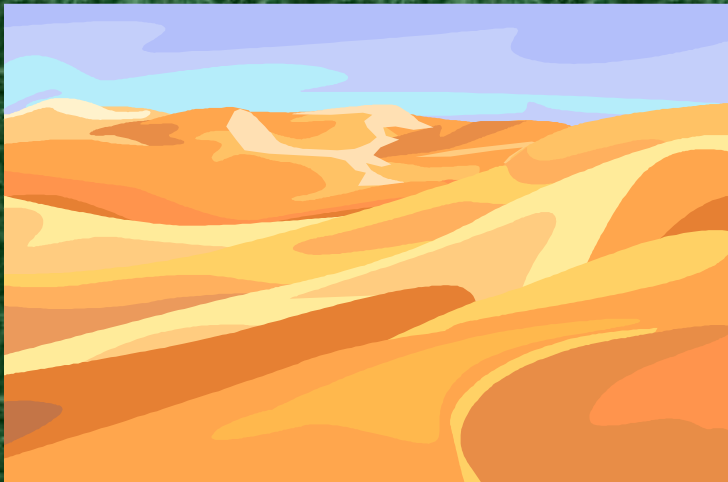
Map Room

- The EIVC has a large supply of various maps for your needs.



BLM

- BLM surface management maps for the entire state.



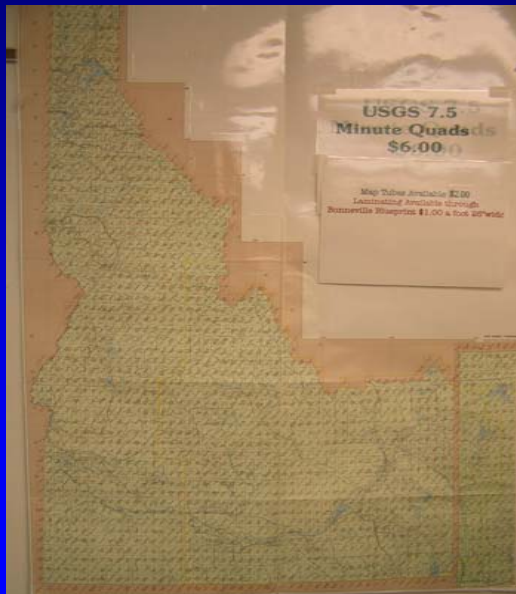
Forest Service

- Forest Service maps covering areas in Idaho, Montana, Wyoming, and Utah.



USGS Topo quads

- We have 816
7.5 minute quads
covering 48% of
Idaho plus 98 in
Western Wyoming.



DOT

- Department of Transportation maps that cover Idaho and include game hunting units.



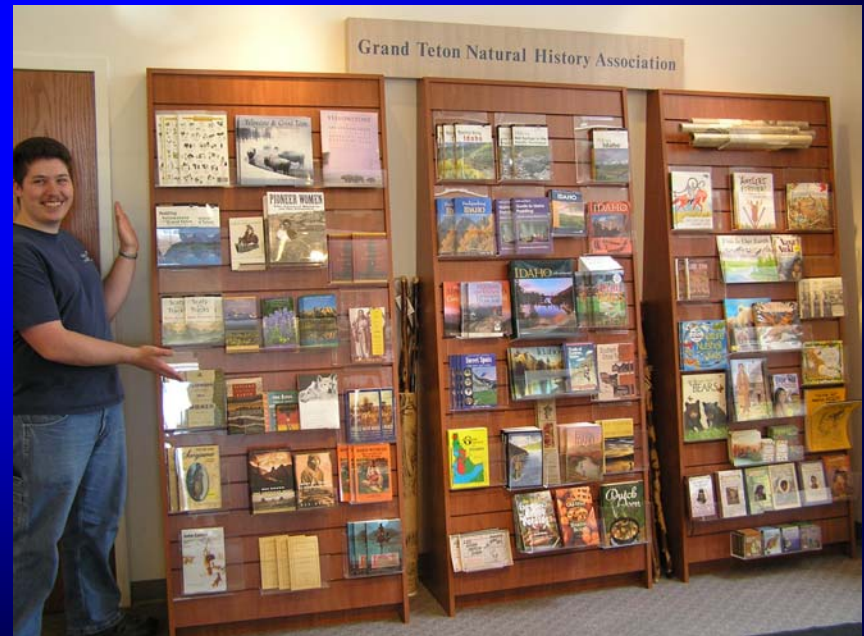
Brochures!

The EIVC supplies visitor's with a wealth of information about Idaho Falls and surrounding recreational opportunities.



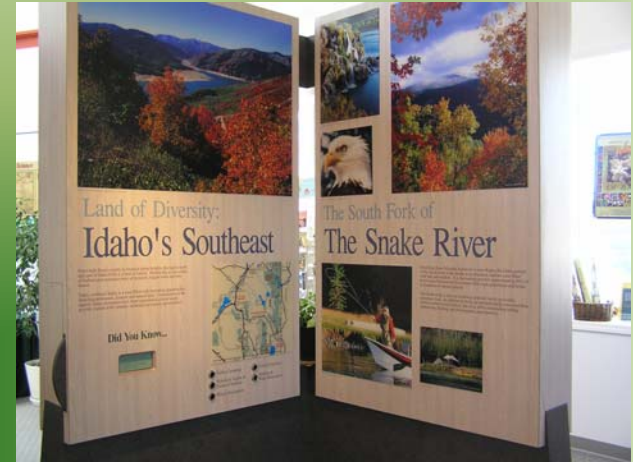
Grand Teton Natural History Association

We have books that range from natural history to field guides to children's books.



Displays

The Visitors Center's exhibits showcase the natural beauty of eastern Idaho from the Continental Divide to the Utah border.



THE END