



United States  
Department  
of Agriculture

VGS-328

Aug. 27, 2008



A Report from the Economic Research Service

[www.ers.usda.gov](http://www.ers.usda.gov)

# Vegetables and Melons Outlook

Gary Lucier and Rachael L. Dettmann

## Potato Acreage Down, Prices Up

Total 2008 U.S. potato acreage is estimated to be down 8 percent from a year earlier due partly to competition for acreage with crops such as sugar beets or wheat in Idaho and corn or wheat in other growing areas. Fall-season area planted was the lowest since 1951. With lower acreage and tight storage supplies for both fresh and processing varieties, prices are expected to remain strong into early fall. The average farm price for all U.S. potatoes in July was 11.4 cents per pound—up 35 percent from a year earlier.

The first estimate of 2008 contract production for processing green peas indicated a 2-percent decline from a year earlier to 426,830 short tons. With a late spring and hot dry conditions stressing the crop in places such as Washington, U.S. per-acre yields were expected to decline 5 percent from last year's record high 2.1 tons. Minnesota, the top producer, is expected to account for 28 percent of the 2008 crop. U.S. per capita domestic use of green peas for canning has trended steadily lower from 3.2 pounds in 1970 to a projected 1.1 pound in 2008.

The popularity of chile (pungent) peppers has increased over the past 2 decades and imports of fresh chiles have grown along with domestic demand. In 2007, a record 563 million pounds of fresh-market chile peppers were imported—up 72 percent since 2000 and 188 percent since 1995. Through June, chile pepper imports were up 28 percent from a year earlier in 2008. About 98 percent of U.S. fresh-market chile pepper imports come from Mexico. For all chile peppers (fresh and processed), imports accounted for about 76 percent of U.S. consumption in 2007. In 2007, per capita use of chile peppers (on a fresh-weight basis) totaled 6.1 pounds—up nearly 1 pound from 2000.

The first estimate of the 2008 dry bean crop indicated a 5-percent reduction from a year earlier. Although acreage was down, yield may reach a record-high 17.9 hundredweight (cwt) per acre—4 percent above a year earlier. Prices will likely remain strong over the next year given limited stocks for most classes, steady domestic demand, strong export demand, and the need to remain competitive with high-priced alternative field crops.

The farm value of all mushroom sales during the 2007/08 crop year (July-June), totaled a record \$964 million, up less than 1 percent from the previous year. Total U.S. mushroom sales volume declined 2 percent to 809 million pounds.

### Contents

[Industry Overview](#)  
[Fresh-Market Vegetables](#)  
[Melons](#)  
[Processing Vegetables](#)  
[Potatoes](#)  
[Mushrooms](#)  
[Dry Edible Beans](#)  
[Dry Peas & Lentils](#)  
[Contacts & Links](#)  
[Appendix Tables](#)

### Web Sites

[Veg. & Melons](#)  
[Potatoes](#)  
[Tomatoes](#)  
[Dry Beans](#)  
[U.S. Trade Data](#)  
[Market News](#)  
[NASS Statistics](#)  
[Organics](#)  
[Transportation](#)

-----  
The next release is  
October 23, 2008.  
-----

Approved by the  
World Agricultural  
Outlook Board.

## Industry Overview

**Fresh vegetables:** Expected reductions in yield and area harvested for summer storage onions (the primary source of onions during the fall and winter) will combine to reduce production moderately from the 57.3 million hundredweight (cwt) of 2007. This crop will transition from the summer nonstorage onion crop, which is expected to total 10.4 million cwt—down 9 percent from a year earlier. Following a spring featuring relatively weak prices, fresh dry-bulb onion prices have slowly begun to strengthen this summer and are expected to average well above the lows of a year earlier into next spring. This summer, given lower area for harvest, fresh vegetable prices are expected to average slightly above the highs of a year ago despite relatively weak demand caused by the slowing economy.

**Melons:** This summer (largely July-September), area for harvest of the three leading melon crops was estimated to be 109,900 acres—8 percent below a year earlier. Area is expected to be lower for each of the three melon crops. With area down 11 percent in Georgia due partly to drought, watermelon area is expected to drop 9 percent from a year earlier. With reduced market volume for all melons, prices have remained above a year earlier, with July wholesale prices for all melons averaging 42 percent higher.

**Processing vegetables:** Processors of the five leading vegetables (tomatoes, sweet corn, snap beans, green peas, and cucumbers for pickles) have contracted 1.2 million acres in 2007—down slightly from a year earlier. Contracts covered 98 percent of the acreage for the five leading processing vegetables last year. Contract area for tomatoes, the single largest processing vegetable in terms of output, is expected to be 7 percent less than a year ago due to larger carryover stocks, strong prices for competing crops, and reduced water availability in California. Although some acreage in California may not yield well due to lack of water, conditions appear to favor good yields in fields that have adequate irrigation water.

**Potatoes:** The 2008 fall potato crop was planted on 929,100 acres, down 8 percent from a year earlier and the smallest fall area since 1951. Acreage was up in just 4 of the 19 fall-crop States. Many Idaho growers favored other crops this year, cutting potato acreage 14 percent to the lowest since 1968. Across all four seasons in 2008, harvested area is projected to total 1.04 million acres—8 percent less than a year earlier. Reflecting dwindling supplies, reported June prices for fresh-market potatoes averaged the highest on record at \$18.61 per hundredweight (cwt).

**Dry edible beans:** U.S. dry bean area for harvest was estimated to be down 8 percent to 1.35 million acres. Given August acreage estimates by class and expectations for average yields, production could increase for Great Northern, navy, small red, dark red kidney, and large lima beans, while declining for most other bean classes. With a smaller crop and continued pressure from competing crop prices, the 2008/09 all dry bean price is expected to average at least 25 percent above the \$26.40/cwt of 2007/08.

**Dry peas and lentils:** According to USDA estimates, projected harvested area for dry peas is down less than 1 percent from a year earlier, while lentil harvested area is expected to drop 8 percent. Given low carryover stocks and good export demand, dry pea and lentil prices are expected to remain strong in 2008/09.

**Mushrooms:** Intended agaricus bed and tray production area for the 2008/09 season is forecast to remain about even with a year earlier at 140 million square feet. Assuming average yields, 2008/09 mushroom output is expected to increase.

Table 1--U.S. vegetable industry at a glance, 2005-08

| Item                  | Unit      | 2005   | 2006   | 2007   | 2008 1/ |
|-----------------------|-----------|--------|--------|--------|---------|
| <i>Area harvested</i> | 1,000 ac. | 7,128  | 7,264  | 7,020  | 6,764   |
| <i>Vegetables:</i>    |           |        |        |        |         |
| Fresh & melons        | 1,000 ac. | 1,916  | 1,944  | 1,943  | 1,928   |
| Processing            | 1,000 ac. | 1,270  | 1,257  | 1,251  | 1,250   |
| Potatoes              | 1,000 ac. | 1,087  | 1,122  | 1,130  | 1,040   |
| Dry beans             | 1,000 ac. | 1,534  | 1,538  | 1,479  | 1,354   |
| Other 2/              | 1,000 ac. | 1,321  | 1,404  | 1,218  | 1,193   |
| <i>Production</i>     | Mil. cw t | 1,281  | 1,308  | 1,369  | 1,316   |
| <i>Vegetables:</i>    |           |        |        |        |         |
| Fresh & melons        | Mil. cw t | 472    | 483    | 494    | 490     |
| Processing            | Mil. cw t | 314    | 318    | 355    | 345     |
| Potatoes              | Mil. cw t | 424    | 441    | 449    | 412     |
| Dry beans             | Mil. cw t | 27     | 24     | 25     | 24      |
| Other 2/              | Mil. cw t | 44     | 41     | 46     | 44      |
| <i>Crop value</i>     | \$ mil.   | 15,906 | 17,162 | 17,967 | 18,617  |
| <i>Vegetables:</i>    |           |        |        |        |         |
| Fresh & melons        | \$ mil.   | 9,829  | 10,726 | 10,910 | 11,075  |
| Processing            | \$ mil.   | 1,255  | 1,341  | 1,605  | 1,755   |
| Potatoes              | \$ mil.   | 2,991  | 3,226  | 3,198  | 3,400   |
| Dry beans             | \$ mil.   | 516    | 556    | 677    | 773     |
| Mushrooms             | \$ mil.   | 909    | 889    | 961    | 964     |
| Other 2/              | \$ mil.   | 406    | 424    | 616    | 650     |
| <i>Unit value 3/</i>  | \$/cw t   | 12.42  | 13.12  | 13.12  | 14.15   |
| <i>Vegetables:</i>    |           |        |        |        |         |
| Fresh & melons        | \$/cw t   | 20.82  | 22.23  | 22.10  | 22.60   |
| Processing            | \$/cw t   | 3.99   | 4.21   | 4.52   | 5.09    |
| Potatoes              | \$/cw t   | 7.06   | 7.33   | 7.12   | 8.25    |
| Dry beans             | \$/cw t   | 18.50  | 22.10  | 26.40  | 32.00   |
| Other 2/              | \$/cw t   | 9.29   | 10.23  | 13.39  | 14.65   |
| <i>Trade</i>          |           |        |        |        |         |
| <i>Imports</i>        | \$ mil.   | 6,607  | 7,284  | 7,873  | 8,545   |
| <i>Vegetables:</i>    |           |        |        |        |         |
| Fresh & melons        | \$ mil.   | 3,668  | 4,091  | 4,377  | 4,670   |
| Processing 4/         | \$ mil.   | 1,587  | 1,746  | 1,920  | 2,165   |
| Potatoes & products   | \$ mil.   | 787    | 856    | 908    | 955     |
| Dry beans             | \$ mil.   | 82     | 84     | 107    | 155     |
| Other 5/              | \$ mil.   | 483    | 507    | 560    | 600     |
| <i>Exports</i>        | \$ mil.   | 3,899  | 4,234  | 4,555  | 5,265   |
| <i>Vegetables:</i>    |           |        |        |        |         |
| Fresh & melons        | \$ mil.   | 1,515  | 1,625  | 1,741  | 1,800   |
| Processing 4/         | \$ mil.   | 828    | 861    | 943    | 1,225   |
| Potatoes & products   | \$ mil.   | 841    | 950    | 1,042  | 1,200   |
| Dry beans             | \$ mil.   | 160    | 211    | 199    | 250     |
| Other 5/              | \$ mil.   | 555    | 588    | 629    | 790     |
| <i>Per capita use</i> | Pounds    | 441    | 434    | 444    | 443     |
| <i>Vegetables:</i>    |           |        |        |        |         |
| Fresh & melons        | Pounds    | 174    | 179    | 183    | 182     |
| Processing            | Pounds    | 126    | 116    | 118    | 120     |
| Potatoes & products   | Pounds    | 126    | 123    | 126    | 125     |
| Dry beans             | Pounds    | 6      | 6      | 7      | 7       |
| Other 2/              | Pounds    | 9      | 10     | 10     | 10      |

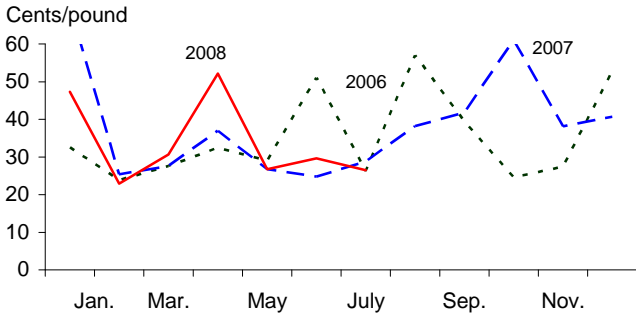
1/ ERS forecasts. 2/ Includes sweet potatoes, dry peas, lentils, and mushrooms (except for crop value). 3/ Ratio of total value to total production. 4/ Includes canned, frozen, and dried. Excludes potatoes, pulses, and mushrooms. 5/ Other includes mushrooms, dry peas, lentils, sweet potatoes, and vegetable seed. All trade data are on a calendar-year basis.

Sources: Derived by ERS from data of USDA, National Agricultural Statistics Service, *Crop Production, Acreage, Agricultural Prices, Crop Values, Mushrooms, and Potatoes*; and from U.S. trade data of the U.S. Dept. of Commerce, U.S. Census Bureau.

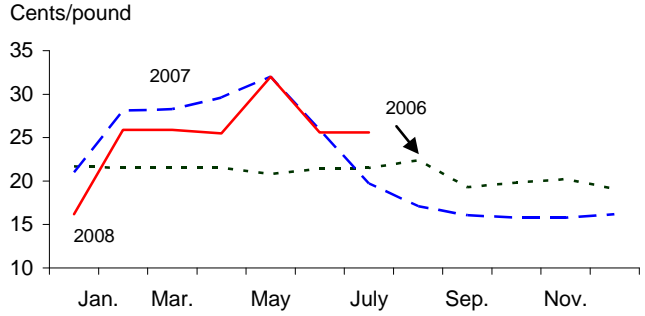
Figure 1

**Point-of-first-sale (farm) price for fresh-market vegetables**

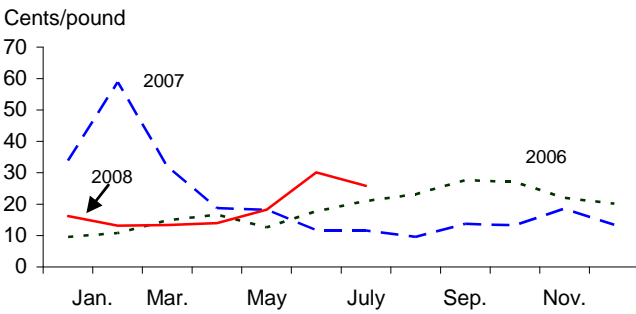
**Broccoli**



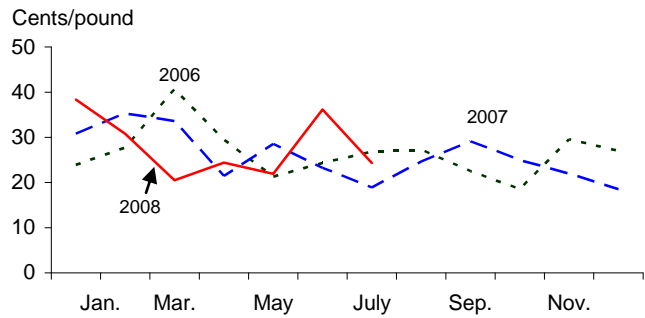
**Carrots**



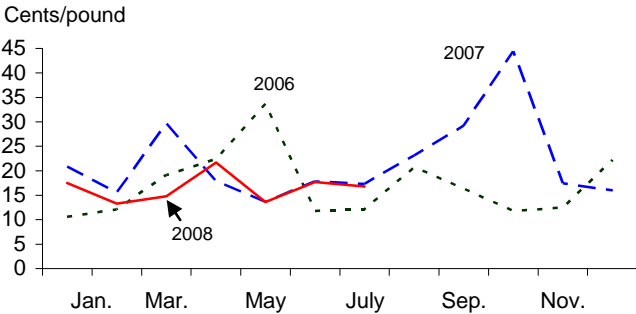
**Celery**



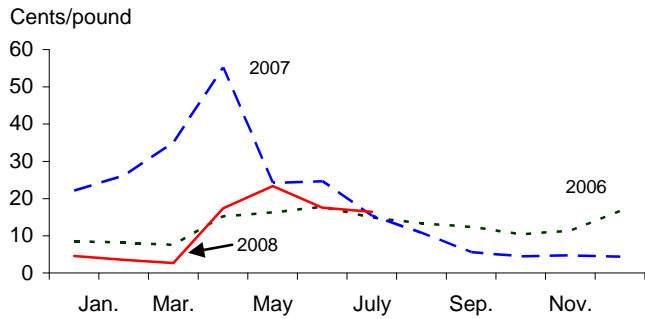
**Cucumbers**



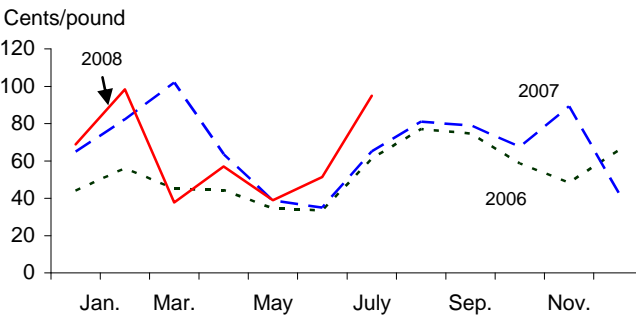
**Head lettuce**



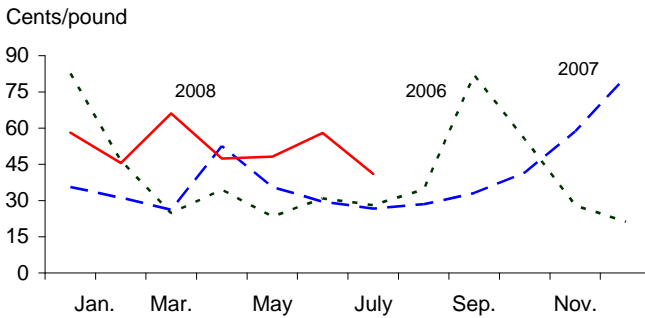
**Onions**



**Snap beans**



**Tomatoes**



Source: USDA, National Agricultural Statistics Service, *Agricultural Prices*.



In 2007, New York growers planted 86,200 acres of fresh-market vegetables (excluding potatoes and dry beans) with a farm value of \$383 million. New York vegetable farms produce a wide variety of fresh-market vegetables but only a few major crops are reported in NASS quarterly surveys. In addition to major crops such as sweet corn, onions, cabbage, snap beans, and tomatoes, New York is also an important producer of pumpkins, squash, and cucumbers. The State also plants smaller acreages (generally less than 1,000 acres) of bell peppers, cauliflower, eggplant, endive/escarole, spinach, and other miscellaneous crops.

After a spring that saw grower prices rise 1 percent from the highs of a year earlier, summer fresh market vegetable prices measured at the point of first sale (largely grower or f.o.b. shipping-point) are expected to average modestly above a year earlier. Higher average prices will likely reflect the impact of reduced acreage, higher production costs, and stronger export demand. Assuming average weather, these upward factors are expected to outweigh the effects of above average yields and sluggish domestic demand. During the summer quarter of 2007 (July-September), prices fell 1 percent from the drought-fed record high of a year earlier.

### ***Mexican Jalapeno and Serrano Peppers Implicated***

In mid-July, the focus of the U.S. Food and Drug Administration (FDA) investigation into the late spring/early summer outbreak of salmonellosis (*Salmonella* serotype *Saintpaul*, an uncommon type of *Salmonella*) turned away from tomatoes and toward fresh-market jalapeno and serrano peppers. Since April,

Table 4--Selected U.S. fresh-market vegetable shipments 1/

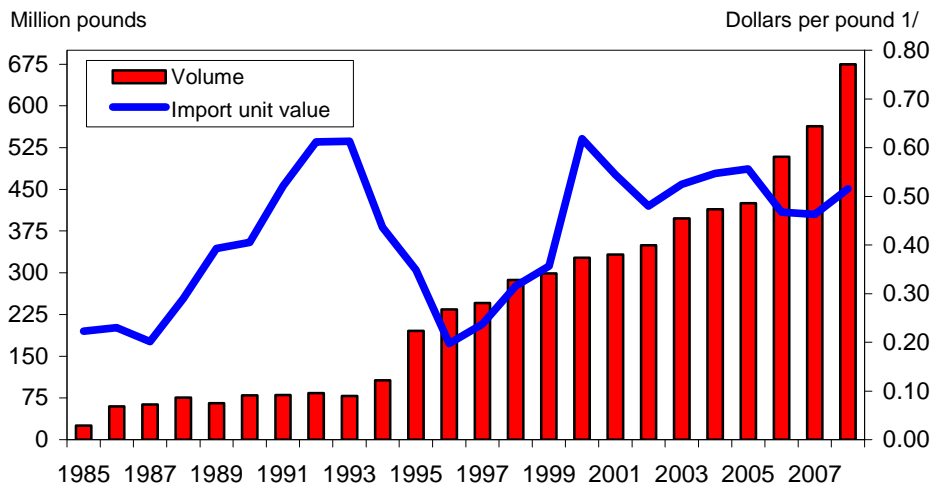
| Item                  | Annual<br>2007 | June<br>2008  | July          |               | Change previous: 2/ |          |
|-----------------------|----------------|---------------|---------------|---------------|---------------------|----------|
|                       |                |               | 2007          | 2008          | Month               | Year     |
| -----1,000 cwt-----   |                |               |               |               | Percent             |          |
| Asparagus             | 3,621          | 233           | 183           | 193           | -17                 | 5        |
| Snap beans            | 3,343          | 230           | 124           | 122           | -47                 | -2       |
| Broccoli              | 9,538          | 710           | 709           | 828           | 17                  | 17       |
| Cabbage               | 12,707         | 491           | 600           | 622           | 27                  | 4        |
| Cantaloup             | 28,284         | 4,057         | 3,639         | 4,210         | 4                   | 16       |
| Carrots               | 9,762          | 735           | 696           | 918           | 25                  | 32       |
| Cauliflower           | 3,944          | 277           | 319           | 276           | 0                   | -13      |
| Celery                | 16,487         | 1,195         | 1,164         | 1,221         | 2                   | 5        |
| Sweet corn            | 11,262         | 2,382         | 566           | 965           | -59                 | 70       |
| Cucumbers             | 15,876         | 904           | 974           | 872           | -4                  | -10      |
| Greens                | 2,391          | 183           | 97            | 102           | -44                 | 5        |
| Head lettuce          | 34,969         | 2,729         | 2,940         | 3,152         | 16                  | 7        |
| Romaine               | 15,455         | 1,226         | 1,253         | 1,383         | 13                  | 10       |
| Leaf lettuce          | 4,215          | 258           | 328           | 304           | 18                  | -7       |
| Onions, dry bulb      | 48,320         | 3,409         | 3,498         | 3,771         | 11                  | 8        |
| Onions, green         | 2,931          | 253           | 141           | 228           | -10                 | 62       |
| Peppers, bell         | 17,860         | 1,155         | 1,242         | 1,178         | 2                   | -5       |
| Peppers, chile        | 6,094          | 405           | 439           | 494           | 22                  | 13       |
| Squash                | 7,008          | 408           | 294           | 265           | -35                 | -10      |
| Tomato, round         | 28,293         | 1,969         | 2,596         | 2,252         | 14                  | -13      |
| Tomato, roma          | 11,849         | 504           | 677           | 737           | 46                  | 9        |
| Tomato, ghouse 3/     | 10,720         | 1,311         | 906           | 1,150         | -12                 | 27       |
| Tomato, small 4/      | 4,601          | 315           | 318           | 310           | -2                  | -3       |
| Watermelon            | 39,909         | 8,859         | 7,294         | 7,988         | -10                 | 10       |
| <b>Selected total</b> | <b>349,439</b> | <b>34,198</b> | <b>30,997</b> | <b>33,541</b> | <b>-2</b>           | <b>8</b> |

1/ Data for 2008 are preliminary. Includes domestic and imported product. 2/ Change in July 2008. 3/ Includes all types of tomatoes produced under cover. 4/ Includes cherry and grape.

Source: USDA, Agricultural Marketing Service, *Fruit and Vegetable Market News*.

Figure 2

**Fresh chile peppers: U.S. annual import volume and unit value**



1/ Import value divided by import volume.

Source: Prepared by ERS from data of U.S. Dept. of Commerce, U.S. Census Bureau.

1,401 people have been infected with *Salmonella Saintpaul* in 43 States, the District of Columbia, and Canada. After tracing a contaminated jalapeno from a small importer in Texas to a chile pepper farm in Northeastern Mexico (where a contaminated Serrano pepper and contaminated irrigation water were found), the FDA quickly cleared U.S.-grown jalapeno and serrano peppers. Also, commercially canned, pickled, and cooked jalapeño and serrano peppers from any geographic location are not connected with the current *Salmonella Saintpaul* outbreak and are deemed safe. According to the 2002 Census of Agriculture, 54 percent of chile acreage in the United States is devoted to processing (canned, dehydrated, frozen).

The popularity of chile peppers (all varieties) has increased over the past 2 decades and imports of fresh chiles have grown along with domestic demand (figure 2). In 2007, a record 563 million pounds of fresh-market chile peppers were imported—up 72 percent since 2000 and 188 percent since 1995. Through June, chile pepper imports were up 28 percent from a year earlier in 2008. About 98 percent of fresh-market chile pepper imports come from Mexico. For all chile peppers (fresh and processed), imports accounted for about 76 percent of U.S. consumption in 2007. In 2007, per capita use of chile peppers (on a fresh-weight basis) totaled 6.1 pounds—up nearly 1 pound from 2000.

Because of a lack of data, it is difficult to estimate the relative market shares among the various types of chile peppers. According to USDA *Market News* movement data, about half of the fresh jalapeno shipment volume this July was sourced from domestic growing areas such as North Carolina and the Rio Grande Valley of Texas, with the remainder imported from Mexico. The largest category shown in the “other pepper (non-bell)” shipment data does not disclose variety and accounted for 93 percent of fresh chile shipments in July. Among the disclosed varieties, jalapeno accounted for 58 percent of volume, followed by Cubanelles and Anaheim.

***Storage Onion Crop To Decline***

Harvested area for all bulb onions is expected to total 148,750 acres in 2008—7 percent below a year earlier. Harvested area for the spring crop was down 6 percent, while area in summer nonstorage onions was off 5 percent. Area expected to be



Table 5--Fresh vegetables: Consumer and producer price indexes

| Item   | 2007              | 2008  |       | Change previous:  |       |
|--|-------------------|-------|-------|-------------------|-------|
|  | July              | June  | July  | Month             | Year  |
|  | ----- Index ----- |       |       | ---- Percent ---- |       |
| <b>Consumer Price Indexes (1982/84=100)</b>    |                   |       |       |                   |       |
| Fresh vegetables                               | 280.1             | 307.2 | 313.8 | 2.1               | 12.0  |
| Potatoes                                       | 294.5             | 311.3 | 347.0 | 11.5              | 17.8  |
| Tomatoes, all                                  | 278.7             | 346.3 | 330.7 | -4.5              | 18.7  |
| Lettuce, all                                   | 254.7             | 269.6 | 276.6 | 2.6               | 8.6   |
| Other vegetables                               | 287.7             | 307.9 | 312.0 | 1.3               | 8.4   |
| <b>Producer Price Indexes (Dec. 1991 =100)</b> |                   |       |       |                   |       |
| Fresh vegetables (excl. potatoes) 1/           | 146.0             | 191.7 | 168.3 | -12.2             | 15.3  |
| Beets  | 118.0             | 97.5  | 131.8 | 35.2              | 11.7  |
| Cabbage  | 156.1             | 202.4 | 218.9 | 8.2               | 40.2  |
| Eggplant                                       | 195.8             | 269.1 | 227.7 | -15.4             | 16.3  |
| Greens   | 155.0             | 144.1 | 162.6 | 12.8              | 4.9   |
| Green peas                                     | 86.4              | 79.5  | 127.2 | 60.0              | 47.2  |
| Onions, green                                  | 241.3             | 274.3 | 296.7 | 8.2               | 23.0  |
| Onions, dry bulb 1/                            | 255.4             | 176.8 | 157.9 | -10.7             | -38.2 |
| Peppers, green                                 | 188.9             | 432.7 | 388.4 | -10.2             | 105.6 |
| Radishes                                       | 288.0             | --    | 305.6 | --                | 6.1   |
| Spinach  | 313.8             | 342.4 | 533.9 | 55.9              | 70.1  |
| Squash   | 135.4             | 161.7 | 156.1 | -3.5              | 15.3  |
| Tomatoes 1/                                    | 135.6             | 297.8 | 160.7 | -46.0             | 18.5  |

1/ Index base is 1982=100.

Source: U.S. Dept. of Labor, Bureau of Labor Statistics (<http://www.bls.gov/data/home.htm>).

Harvested for summer/fall storage onions is down 7 percent from a year ago. Yield for the 2008 spring crop was up 15 percent, while yield for the summer non-storage crop was down 3 percent. A year ago, the yield for summer storage onions nearly exceeded the 2004 record. After a slow start, growing conditions have generally been favorable in most areas this year but the national yield is not expected to be as strong as a year ago. Thus, with reduced area and slightly lower yields, production of storage onions for the fresh market (excluding California) could decline about a sixth from the 44.3 million cwt of a year ago. Assuming crop quality is high (preventing excessive inventory shrinkage) and export demand is average, 2007/08 fresh dry bulb onion supplies may be tighter this fall and winter. This in turn will support higher market prices and improved grower returns following the extreme lows of the past year.

During the second quarter (April-June), fresh-market bulb onion prices measured at the point of first-sale averaged \$19.43 per cwt, down 44 percent from the record high of the previous spring. Although well below a year earlier, onion prices were the second highest of the past 5 spring seasons (despite carryover from the storage crop) due to a smaller spring crop and sharply reduced imports. Since peaking in May, prices have trended lower seasonally with marketings from the spring and summer nonstorage crops. With a smaller storage crop in prospect, monthly fresh bulb onion prices should easily remain above year-earlier-levels into next spring.

The market situation for lettuce and tomatoes compared with a year earlier was as follows:

#### Head lettuce

- Area for harvest in California during July-September is down 7 percent from a year earlier to 40,000 acres.



- Area this fall may decline due to limited water supplies in central California, with any market impacts expected from mid-October to late November.
- *Market News* shipment volume during June-July was down 1 percent from a year earlier as improved yields apparently offset much of the drop in area.
- Prices at the point of first sale (largely grower or f.o.b. shipping point) averaged 17.3 cents per pound during June and July—down 2 percent from a year earlier.
- *Market News* retail prices during June and July averaged \$1.00 per head, with romaine selling for \$1.09 per head.
- January-June all lettuce import volume was up 25 percent from a year earlier to a record high 140 million pounds.
- January-June head lettuce export volume was down 6 percent from a year earlier with other lettuce exports up 3 percent.
- Per capita use is projected to be 20.1 pounds in 2008, down 1 percent from 2007.

#### Tomatoes, all (excluding grape/cherry)

- Shipment volume during June-July was down 4 percent from a year earlier due to the cool, wet Spring and the impact of the salmonellosis outbreak.
- Market volume of greenhouse tomatoes increased 12 percent during June-July.
- Prices at the point of first sale (largely grower or shipping point) averaged 49.5 cents per pound during June and July—up 76 percent from a year earlier.
- *Market News* retail prices for field-grown round tomatoes during June and July averaged \$1.53 per pound, with organic selling for \$2.90 per pound.
- January-June import volume was up 2 percent from a year earlier to a record high 1.58 billion pounds, led by greenhouse tomato volume (up 18 percent).
- January-June export volume was up 7 percent from a year earlier.
- Per capita use is projected to be 20.2 pounds in 2008, down slightly from 2007.

Table 6--Selected fresh-market vegetable trade volume, 2006-08 1/

| Item                   | 2007   | January - June |        |        | Change  |
|------------------------|--------|----------------|--------|--------|---------|
|                        | Annual | 2006           | 2007   | 2008   | 2007-08 |
|                        |        | --1,000 cwt--  |        |        | Percent |
| <b>Exports, fresh:</b> |        |                |        |        |         |
| Onions, dry bulb       | 5,508  | 2,649          | 2,297  | 2,156  | -6      |
| Lettuce, other         | 4,534  | 2,084          | 2,300  | 2,378  | 3       |
| Tomatoes               | 3,557  | 1,491          | 1,630  | 1,740  | 7       |
| Carrots                | 2,575  | 1,582          | 1,553  | 1,656  | 7       |
| Broccoli               | 3,110  | 1,758          | 1,727  | 1,746  | 1       |
| Lettuce, head          | 3,532  | 2,084          | 1,712  | 1,609  | -6      |
| Celery                 | 2,597  | 1,463          | 1,509  | 1,455  | -4      |
| Other                  | 10,783 | 7,219          | 6,320  | 6,924  | 10      |
| Total                  | 36,195 | 20,330         | 19,049 | 19,663 | 3       |
| <b>Imports, fresh:</b> |        |                |        |        |         |
| Tomatoes, all          | 23,611 | 14,321         | 15,498 | 15,794 | 2       |
| Cucumbers              | 10,122 | 5,816          | 6,335  | 6,896  | 9       |
| Onions, dry bulb       | 9,025  | 3,226          | 5,450  | 3,762  | -31     |
| Peppers, sweet         | 7,264  | 4,730          | 4,464  | 4,601  | 3       |
| Squash 2/              | 5,658  | 3,154          | 3,490  | 3,358  | -4      |
| Peppers, chile         | 5,634  | 2,454          | 2,424  | 3,112  | 28      |
| Asparagus, all         | 2,735  | 1,215          | 1,300  | 1,509  | 16      |
| Other                  | 23,550 | 11,019         | 12,257 | 12,800 | 4       |
| Total                  | 87,599 | 45,935         | 51,217 | 51,832 | 1       |

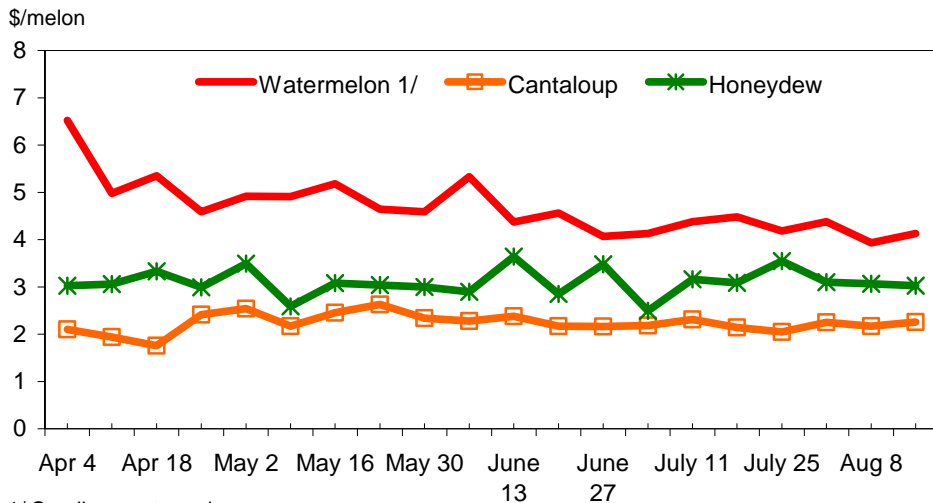
1/ Excludes melons, potatoes, mushrooms, and dry pulses. 2/ Excludes chayote.

Source: Prepared by ERS using data from U.S. Department of Commerce, U.S. Census Bureau.



During May-July of 2008, the producer price index for all melons averaged 9 percent above that of a year earlier. With lower acreage and delayed crop development, prices averaged higher than a year ago for all three melon crops. According to USDA's Market News Service, U.S. average advertised retail prices for cantaloups have declined seasonally each month since May, averaging \$2.18 each during the first 3 weeks of August. Average retail prices for seedless watermelon have declined monthly since peaking at the start of the domestic season at \$5.27 each—falling to \$4.20 in August. Small “personal” watermelon prices have not varied as much, averaging \$3.01 per melon in August—down from a March peak of \$3.45. Honeydew melon retail prices have also shown little variation, dropping from \$3.43 per melon in March to \$3.06 in August.

Figure 4  
**Melons: U.S. weekly advertised retail price, April-August, 2008**



1/ Seedless watermelon.

Source: USDA, AMS, Market News Service, *Weekly Fruit and Vegetable Retail Price Report*.

Table 8--U.S. fresh-market melons: Trade volume, January - June

| Item             | Annual | January - June |        |        | Change  |
|------------------|--------|----------------|--------|--------|---------|
|                  | 2007   | 2006           | 2007   | 2008   | 2007-08 |
|                  |        | --1,000 cwt--  |        |        | Percent |
| <i>Exports:</i>  |        |                |        |        |         |
| Watermelon       | 2,860  | 1,364          | 1,345  | 1,406  | 5       |
| Cantaloups       | 1,579  | 419            | 482    | 457    | -5      |
| Honeydew & other | 992    | 249            | 246    | 241    | -2      |
| Total            | 5,431  | 2,032          | 2,074  | 2,104  | 1       |
| <i>Imports:</i>  |        |                |        |        |         |
| Cantaloups       | 10,082 | 8,004          | 8,256  | 7,529  | -9      |
| Watermelon, all  | 9,027  | 6,646          | 7,330  | 8,743  | 19      |
| Seedless         | 7,310  | 5,681          | 5,905  | 7,539  | 28      |
| Honeydew & other | 4,244  | 3,183          | 2,929  | 2,918  | 0       |
| Total            | 23,353 | 17,833         | 18,515 | 19,190 | 4       |

Source: Prepared by ERS using data from U.S. Department of Commerce, U.S. Census Bureau.

## Processing Vegetables

### *Area for Harvest Down Slightly*

In 2008, contract area for harvest of the five major processing vegetables (tomatoes, sweet corn, snap beans, green peas, and cucumbers) is expected to total 1.2 million acres—down less than 1 percent from a year ago. Contract production accounted for 98 percent of the output of the five leading processing vegetables last year. This year, area devoted to canning vegetables declined 3 percent, as increases for sweet corn and pickling cucumbers were outweighed by reductions in tomatoes, snap beans, and green peas. Processors responded to shrinking inventories of sweet corn and green peas and stronger wholesale prices by increasing area devoted to vegetables for freezing 5 percent—the second consecutive increase of this magnitude. With an anticipated reduction in the processing tomato crop and yields that at least match the average of the past 3 years for other crops, total output of the five leading processing vegetables could total between 16 and 17 million tons—down from 17.3 million tons a year earlier but up from the 2005-07 average of 15.9 million tons. July wholesale prices for canned vegetables (including juices) were running 6 percent above a year ago, while frozen vegetables were selling for 7 percent more.

U.S. processors increased sweet corn contract area 4 percent, with area for canning up 2 percent and freezing up 6 percent. Processors generally purchase very little sweet corn on the open market (for the second consecutive year, none was reported last year). Despite a late start again (last year was also late) in most areas due to a cool, wet early spring, few problems have been noted in this year's crop. However, with crop progress behind schedule in most of the Midwest, there is concern an early frost could reduce production potential. In mid-August, harvest in Minnesota (which accounts for more than half of the area) was running well behind both last year (35 percent) and the 5-year average (22 percent), with less than a tenth of the crop delivered to plants. Given contract acreage and current crop conditions, output of processing sweet corn could be 3 to 7 percent above a year ago, totaling around 3.1 million short tons—equal to the 2005-07 average.

Table 9--Processing vegetables: Consumer and producer price indexes

| Item                                      | 2007              | 2008  |       | Change previous:    |      |
|---|-------------------|-------|-------|---------------------|------|
|   | July              | June  | July  | Month               | Year |
|   | ----- Index ----- |       |       | ----- Percent ----- |      |
| <b>Consumer Price Indexes (12/97=100)</b> |                   |       |       |                     |      |
| Processed fruits and vegetables           | 129.0             | 138.7 | 140.5 | 1.3                 | 8.9  |
| Canned vegetables                         | 131.2             | 144.5 | 148.1 | 2.5                 | 12.9 |
| Frozen vegetables (1982-84=100)           | 182.6             | 192.6 | 193.1 | 0.3                 | 5.8  |
| Dry beans, peas, lentils                  | 134.6             | 160.0 | 162.6 | 1.6                 | 20.8 |
| Olives, pickles, relishes                 | 121.2             | 124.7 | 126.0 | 1.0                 | 4.0  |
| <b>Producer Price Indexes (1982=100)</b>  |                   |       |       |                     |      |
| Canned vegetables and juices              | 143.1             | 152.5 | 153.6 | 0.7                 | 7.3  |
| Pickles and products                      | 194.8             | 202.8 | 204.1 | 0.6                 | 4.8  |
| Tomato catsup and sauces 1/               | 137.2             | 144.8 | 144.6 | -0.1                | 5.4  |
| Canned dry beans                          | 134.4             | 142.0 | 143.1 | 0.8                 | 6.5  |
| Vegetable juices 1/                       | 116.6             | 119.0 | 118.6 | -0.3                | 1.7  |
| Frozen vegetables                         | 148.2             | 156.5 | 158.3 | 1.2                 | 6.8  |
| Frozen vegetable combinations             | 109.4             | 112.6 | 113.9 | 1.2                 | 4.1  |
| Dried/dehy. fruit & vegetables            | 179.8             | 188.4 | 194.4 | 3.2                 | 8.1  |

1/ Index base year is 1987.

Source: U.S. Dept. of Labor, Bureau of Labor Statistics (<http://www.bls.gov/data/home.htm>).

## Tomato Crop Behind 2007

With a 7-percent reduction in contract area expected to be partly offset by above average yields, contract production of U.S. processing tomatoes was projected by NASS to decline 3 percent to 12.2 million short tons—still the third largest on record. Although variable, yields generally appear to be averaging above earlier expectations despite impacts from a late frost, a dry-windy spring, and severe irrigation water shortages. Because the production process has been a bit uneven this season due largely to water availability issues, to meet the lofty July production forecast, California yields will have to reach record or near record highs. Through August 23, the California Processing Tomato Advisory Board reported 4.4 million tons had been processed this year, down 1.1 million tons from a year earlier. Unless weekly tonnage continues to peak at a higher level than last year or runs longer and stronger into the fall, California processors may be hard-pressed to reach the projected 11.7 million tons.

Although this year's crop is not complete, there is considerable concern over the 2009 season given rising input costs and the California drought. Another winter of below-normal precipitation in California could force processors to contract more of their tomatoes outside of traditional areas next year—possibly resulting in higher tomato contract and/or transport costs. Thus, given uncertainty in the current crop, potential cropping challenges in 2009, and continued good export demand, it is likely that wholesale prices will remain strong for tomato products through next year.

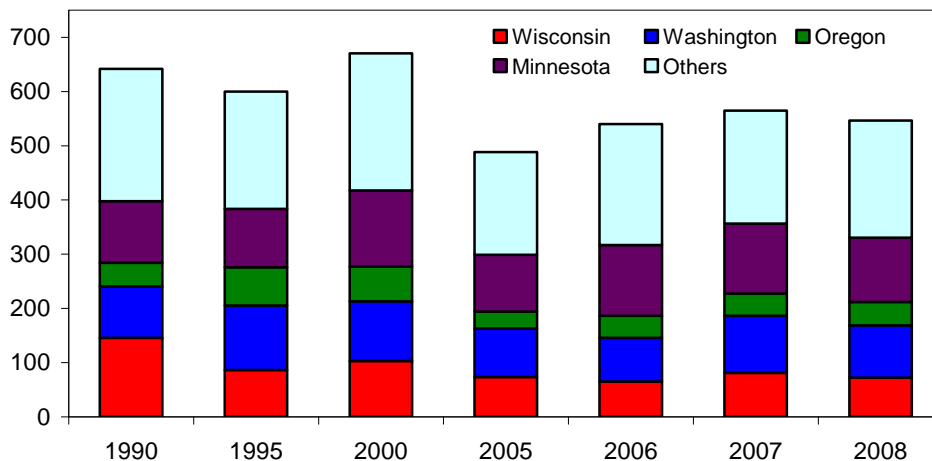
## Green Pea Output Down

The first estimate of 2008 contract production for processing green peas indicated a 2-percent decline from a year earlier to 426,830 short tons. Estimated contract area for harvest was up 3 percent from a year earlier, with virtually all the crop expected to be produced under contract. Processors planned for an increase in the pack of frozen peas, contracting for 8 percent more acres for freezing this spring, while contracting for 1 percent fewer acres for canning. Per capita disappearance of green

Figure 4

### U.S. green peas for processing: Production, 1990-2008

1,000 tons



Source: USDA, National Agricultural Statistics Service, *Vegetables* (2008 contract only).

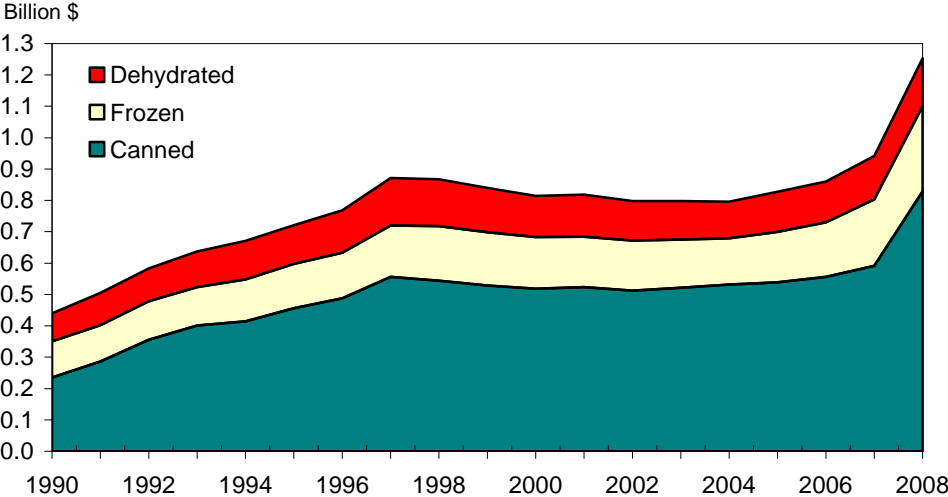
peas used in frozen products is expected to remain flat in 2008 at around 1.9 pounds. Since 1960, domestic use of green peas for freezing has averaged 1.95 pounds per person annually. During the 2000s, per capita domestic use has been variable, averaging 1.84 pounds—down 10 percent from the 1990s and about even with use in the 1980s. At the same time per capita domestic use of green peas for canning has trended steadily lower from 3.2 pounds in 1970 to a projected 1.1 pound in 2008.

With a late spring and hot dry conditions stressing the crop in places such as Washington, U.S. per-acre yields were expected to decline 5 percent from last year's record high 2.1 tons. Minnesota, the top producer, is expected to account for 28 percent of the 2008 crop. However, with green pea yields projected to be down 6 percent from a year ago and area harvested down 1 percent, Minnesota's crop is expected to decline 7 percent. Washington, the second leading producer, was expected to pack 9 percent fewer green peas this year. Processors in Washington had initially budgeted for a larger pack, but a 16 percent reduction in yield prevented that from happening. The next production estimate for green peas and other processing vegetables is scheduled to be released in the September 4 *Vegetables* report from USDA's National Agricultural Statistics Service.

**Processed Exports Soar**

Driven by the weak dollar and strong wholesale prices, the value of processed vegetable exports (excluding potatoes, mushrooms, and pulses) jumped 33 percent to \$579 million during the first half of 2008. Canada (32 percent of value), Japan (12 percent), Italy (7 percent), Mexico (7 percent), and Hong Kong (5 percent) were the top five foreign markets for U.S. canned, frozen, and dehydrated vegetables. Italy usually imports very few processed vegetables from the United States—less than \$1 million in most years. In years (such as 2008) when U.S. exports to Italy suddenly rise, it usually is because of a shortage of available tomato paste in Italy. Almost all of the \$39 million in processed products shipped to Italy so far this year

Figure 5  
**U.S. processed vegetables: Calendar year export value, 1990-2008 1/**



1/ Excludes potatoes, mushrooms, and dry pulse crops. ERS forecast for 2008.  
 Source: Derived by USDA, ERS from data of U.S. Dept. of Commerce, U.S. Census Bureau.

consisted of tomato paste. Largely because of strong worldwide demand for tomato paste and other tomato products, the value of canned vegetable exports jumped 40 percent this year.

Excluding potatoes, U.S. exports of frozen vegetables were up 29 percent during January-June. If this percentage gain is maintained for the entire year, it would mark the largest annual increase on record. Canada (25 percent of export value), Japan (23 percent), and Hong Kong (19 percent) have been the top three foreign markets so far in 2008. Although nearly all product categories are running ahead of a year earlier (benefiting from the weaker dollar), most of the surge so far this year is due to a 77 percent leap in mixed vegetable exports (HS 2004908580). The majority of the gain in this category was due to a sevenfold increase in the value of shipments to Hong Kong.

Table 10--Value of processed vegetable trade 1/

| Item                        | 2007   | January - June |      |      | Change  |
|-----------------------------|--------|----------------|------|------|---------|
|                             | Annual | 2006           | 2007 | 2008 | 2007-08 |
| ----- Million dollars ----- |        |                |      |      |         |
| <b>Imports:</b>             |        |                |      |      | Percent |
| Canned                      | 899    | 407            | 437  | 471  | 8       |
| Frozen                      | 630    | 266            | 298  | 377  | 26      |
| Dehydrated 2/               | 391    | 170            | 197  | 210  | 7       |
| <b>Exports:</b>             |        |                |      |      |         |
| Canned                      | 592    | 272            | 269  | 378  | 40      |
| Frozen                      | 212    | 85             | 100  | 128  | 29      |
| Dehydrated 2/               | 139    | 63             | 66   | 73   | 10      |

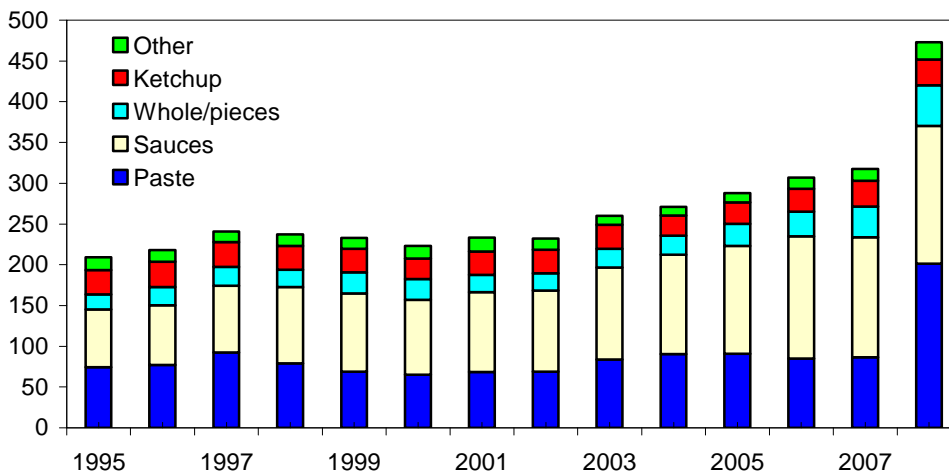
1/ Excludes potatoes and mushrooms. 2/ Includes dried vegetables except dry pulses.

Source: Derived by ERS from data of the U.S. Department of Commerce, U.S. Census Bureau.

Figure 6

**U.S. processed tomatoes: Calendar year export value, 1995-2008 1/**

Million \$



1/ Excludes frozen and dried/dehydrated. ERS forecast for 2008.

Source: Derived by USDA, ERS from data of U.S. Dept. of Commerce, U.S. Census Bureau.



## Potatoes

### *Delayed Harvests and Decreased Acreage Makes for Interesting 2008*

Total 2008 U.S. potato acreage is estimated to be down 8 percent from last year, with summer and fall plantings experiencing the greatest decreases. Acreage loss is partly attributable to competing crops such as sugar beets or wheat in Idaho and corn or wheat plantings in other growing areas. A cool wet spring delayed plantings in most growing areas, causing some concern of timely crop development. Summer harvested area is expected to decrease 11 percent from 2007 to 45.5 thousand acres, and with lower yields, summer production is expected to be down 14 percent to 14.6 million cwt (hundredweight).

In Texas, the largest summer-potato State, growers reported disappointing yields and delayed harvests. Yields fell 6 percent to 370 cwt per acre, while production dropped 9 percent to 1.9 million cwt. Although California's yield estimates were up 4 percent from 2007 to 375 cwt, the 14 percent drop in harvested acreage is expected to leave production down 11 percent to 2.3 million cwt. Colorado has shown promising summer production, benefiting from healthy irrigation water supplies compared with 2007. Although Colorado growers expressed concern over early June frosts and delayed plantings, summer harvested acreage was up 43 percent to 4,000 acres. With yields estimated to be up slightly to 360 cwt, potato production is projected to be up 47 percent from a year earlier to 1.4 million cwt.

Posting the lowest area planted since 1951, fall potato acreage was estimated to be down 8 percent to 929.1 thousand acres. Poor spring weather has pushed Idaho's crop development back by at least one week. However many industry sources are hopeful that favorable summer weather will beef up size profiles for the crop, making up for the 14 percent drop in plantings.

Table 11--Potatoes by season and selected State: Area, yield, and production

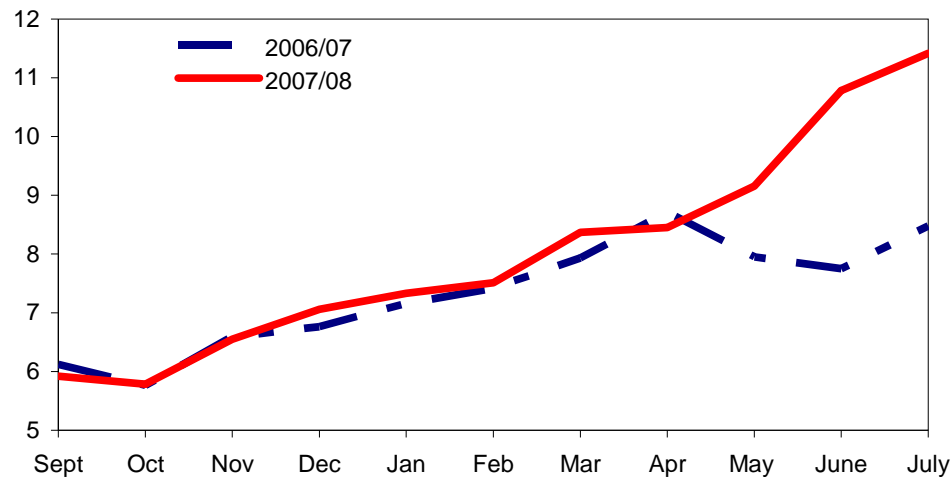
| Season &<br>State | Area              |       |           |       | Yield     |      | Production      |        |
|-------------------|-------------------|-------|-----------|-------|-----------|------|-----------------|--------|
|                   | Planted           |       | Harvested |       | 2007      | 2008 | 2007            | 2008   |
|                   | 2007              | 2008  | 2007      | 2008  |           |      |                 |        |
|                   | ---1,000 acres--- |       |           |       | ---Cwt--- |      | ---1,000 Cwt--- |        |
| <b>Summer</b>     |                   |       |           |       |           |      |                 |        |
| CA                | 7.0               | 6.0   | 7.0       | 6.0   | 360       | 375  | 2,520           | 2,250  |
| CO                | 3.0               | 4.4   | 2.8       | 4.0   | 350       | 360  | 980             | 1,440  |
| KS                | 5.0               | 5.0   | 4.9       | 4.8   | 365       | 330  | 1,789           | 1,584  |
| TX                | 11.2              | 10.3  | 9.8       | 9.5   | 395       | 370  | 3,871           | 3,515  |
| VA                | 5.6               | 5.9   | 5.4       | 5.7   | 210       | 230  | 1,134           | 1,311  |
| U.S.              | 53.7              | 48.0  | 51.3      | 45.5  | 332       | 321  | 17,032          | 14,627 |
| <b>Fall</b>       |                   |       |           |       |           |      |                 |        |
| CO                | 59.2              | 57.0  | 59.1      | 56.7  | 355       |      | 20,981          |        |
| ID                | 350.0             | 300.0 | 349.0     | 299.0 | 377       |      | 131,650         |        |
| ME                | 57.1              | 55.0  | 57.0      | 54.5  | 290       |      | 16,530          |        |
| MI                | 42.5              | 44.5  | 42.0      | 44.0  | 350       |      | 14,700          |        |
| OR                | 36.5              | 35.5  | 36.5      | 35.5  | 554       |      | 20,238          |        |
| WA                | 165.0             | 155.0 | 165.0     | 155.0 | 620       |      | 102,300         |        |
| WI                | 64.5              | 64.5  | 64.0      | 63.0  | 440       |      | 28,160          |        |
| U.S.              | 1,010.6           | 929.1 | 996.7     | 916.2 | 410       |      | 409,082         |        |

Source: USDA National Agricultural Statistics Service, *Crop Production*.

Figure 7

**U.S. potatoes: Average price received by month**

\$ per cwt



Source: USDA, National Agricultural Statistics Service, *Agricultural Prices*.

Washington is expected to harvest 155 thousand acres, a 6 percent drop from 2007. With late spring planting and strong demand for both fresh and processing potatoes, it will be interesting to see whether growers harvest according to historic schedules, or whether they keep the crop in the ground longer to allow full crop maturity.

Wisconsin has experienced a tumultuous crop year. Delayed plantings, hail damage in some areas, and summer flooding in the southern growing region, has caused some loss in potato acreage. Harvested area is expected to decrease by 2 percent and the 2008 harvest is expected to get off to a slow start. Motivated by strong demand from the chipping industry and for fresh table supplies, Michigan potato acreage increased 5 percent from 2007 to 45 thousand acres. Late plantings and strong demand from chip plants to start processing the 2008 crop may sacrifice part of Michigan’s potential yield.

***Shipments and Prices Remain Strong Through Summer***

Fresh tablestock shipments are expected to be tight given the delay in summer and fall harvests. June and July tablestock shipments reflected a 7 to 8 percent decrease from a year earlier with 8.5 million cwt shipping in June and 7.3 million cwt shipping in July. Shipments from Idaho have remained stable throughout 2008, despite industry supply concerns with an average 1 percent increase in shipments between January and July; July’s shipping rate posted a 5 percent increase of 2.7 million cwt.

Crop year-to-date shipments (September-July) in chipping potatoes of 41 million cwt are 11 percent behind the previous year. July was a particularly slow month in shipments of potatoes for chipping, with 2.1 million cwt moved into the market—a 35 percent decrease from last year, reflecting a short supply for chipping manufacturers. With decreases in 2008 acreage, and tight storage supply for both fresh and processing varieties, prices are expected to remain strong through summer and early fall. Throughout the United States, the average price received for potatoes in July was \$11.42 per cwt, a 35 percent increase from July 2007. Idaho’s average price received for all potatoes was \$8.80 per cwt, compared to \$5.80 the previous July—a 6-percent increase from June of this year.

Table 12--U.S. potatoes: Monthly shipments 1/

| Item/year             | May                   | June   | July   | Crop year to date 2/ |
|-----------------------|-----------------------|--------|--------|----------------------|
|                       | ----- 1,000 cwt ----- |        |        |                      |
| <b>Idaho</b>          |                       |        |        |                      |
| 2006                  | 2,715                 | 2,695  | 2,453  | 28,654               |
| 2007                  | 2,718                 | 2,616  | 2,616  | 28,720               |
| 2008                  | 2,615                 | 2,602  | 2,749  | 29,104               |
| % change              | -3.8                  | 5.1    | 5.1    | 1.3                  |
| <b>Fresh market</b>   |                       |        |        |                      |
| 2006                  | 9,495                 | 9,391  | 8,030  | 97,887               |
| 2007                  | 9,330                 | 9,115  | 7,974  | 96,198               |
| 2008                  | 9,785                 | 8,512  | 7,326  | 97,278               |
| % change              | 4.9                   | -6.6   | -8.1   | 1.1                  |
| <b>Total potatoes</b> |                       |        |        |                      |
| 2006                  | 16,458                | 13,035 | 12,817 | 156,189              |
| 2007                  | 16,242                | 14,143 | 11,239 | 155,438              |
| 2008                  | 18,123                | 12,512 | 9,447  | 153,766              |
| % change              | 11.6                  | -11.5  | -15.9  | -1.1                 |

1/ Domestic shipments plus net exports. 2/ Crop year-to-date is September-July.

Sources: Derived by ERS from data of USDA, Agricultural Marketing Service, *Market News* and U.S. Department of Commerce, U.S. Census Bureau.

Fresh potatoes shipped from Idaho sold for \$11.00 per cwt in June, compared with \$6.40 the previous year, and a 64 percent increase in price compared with May. California potato growers received an average price of \$18.90 per cwt July, reflecting strong market demand. California has exhibited strong demand since May, with prices increasing from \$8.90 per cwt in April to \$18.90 per cwt in July.

French fry cold storage stocks seem to have reacted to industry reports of fryer price increases in June aimed at balancing demand with anticipated short supplies through the end of the summer. While June stocks increased 10 percent from May to 952,000 cwt, July stocks were up 10 percent from a year earlier at 858,000 cwt. Year-to-date totals (January-July) for frozen potatoes in storage were 6.2 million cwt—up 5 percent from the previous year.

### ***Solid Demand for U.S. Exports***

U.S. potato exports continued a strong trend through early summer, with June volume totaling 255 thousand cwt. Year-to-date (September-June) totals of \$932 million are 10 percent above the previous year. Frozen french fry export volume was strong through the spring, but slowed in June to 138 thousand cwt, still well above June 2007 totals of 123 thousand cwt. Although french fry exports have been healthy this year, export growth has been limited due to tight domestic supplies.

Chip exports also exhibited healthy export demand in June with 11.8 thousand cwt, bringing year-to-date totals to 114 thousand cwt, a 10 percent increase from the previous year. The dehydration sector still lagged in export demand in June, with 9.6 thousand cwt being shipped out of the country. The year-to-date total of 102 thousand cwt was 10 percent below the average of the last three years.

Imports were up in all potato categories for May and June, reflecting strong U.S. demand and limited domestic supply. Frozen fries were the largest potato import by volume, with 279 thousand cwt reported in May/June—just below May/June fry exports of 281 thousand cwt. Net export value (exports minus imports) remained healthy at \$26 million during June. Year-to-date net export value stands at \$157 million, 63 percent above a year earlier.

# Mushrooms

## Production Down, Value Up

The farm value of all mushroom (*Agaricus* and others) sales during the 2007/08 crop year (July-June), totaled a record \$964 million, up slightly from last year's \$961 million. Total U.S. mushroom sales volume declined 2 percent to 809 million pounds. A 5-percent decrease in total area filled with *Agaricus* mushrooms was partly offset by a 2-percent increase in yield. In the two top-producing States, *Agaricus* yield was up 7 percent in Pennsylvania at 6.36 pounds per square foot, while declining 1 percent in California to 4.72 pounds.

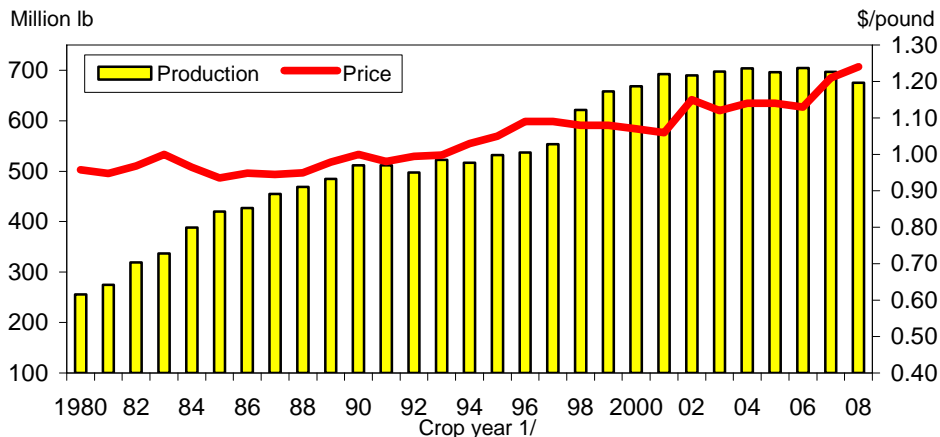
Sales volume of fresh *Agaricus* mushrooms declined 3 percent to 675 million pounds. Fresh-market volume accounts for about 85 percent of all *Agaricus* sales. On the processing side, *Agaricus* volume rose slightly from a year earlier to 118 million pounds. As a result, imports, an important component of the processed mushroom market, remained relatively flat compared with a year earlier. Although demand for fresh-market mushrooms has been relatively lackluster, average prices rose 2 percent to a nominal dollar record \$1.24 per pound. Meanwhile, reflecting reduced mushroom supplies, the unit value of mushrooms available for processing jumped 1 percent to \$0.65 cents per pound. In line with reduced production, per capita disappearance (use) of all mushrooms decreased 4 percent to 3.88 pounds in 2007/08. Fresh-market use dropped 4 percent to 2.45 pounds per person, but processing use decreased 3 percent to 1.43 pounds per capita. According to data provided by the U.S. Census Bureau, fresh-market imports of mushrooms declined 3 percent to 67 million pounds in 2007/08.

The sales volume of specialty mushrooms (excluding brown *Agaricus*), most of which are sold in the fresh market, rose 14 percent to 16 million pounds, with the largest gain in Shiitake mushrooms (up 42 percent). Volume of oyster mushrooms dropped 16 percent to 4.2 million pounds. After declining a year earlier, the volume of brown *Agaricus* mushrooms (including Portabello and Crimini) reversed course in 2007/08, increasing 6 percent to 104.9 million pounds. These varieties now account for 16 percent of *Agaricus* sales value, up 1 percent from a year earlier.

The volume of mushrooms sold as certified organic increased 51 percent to 13.3 million pounds in 2007/08. Specialty (non-*agaricus*) mushrooms accounted for 16

Figure 8

### U.S. fresh-market *Agaricus* mushrooms: Sales volume & producer price



1/ Crop year ends with year listed (e.g., 1980 = 1979/80).

Source: USDA, National Agricultural Statistics Service, *Mushrooms*.

percent of certified organic sales, with the remainder Agaricus. The share of mushroom sales volume consisting of certified organic products increased to 4.9 percent in 2007/08, up from 4.4 percent a year earlier.

Intended Agaricus bed and tray production area for the 2008/09 season is expected to remain about the same as a year earlier at 140 million square feet. Production of specialty mushrooms (excluding brown Agaricus) is expected to increase slightly to 17 million pounds in 2008/09, fueled largely by gains in both Shiitake and Oyster mushrooms. Assuming modest changes in trade volume, per capita use of all mushrooms is expected to remain relatively steady during the coming year.

Table 13--U.S. agaricus mushrooms: Sales, price, and value, selected States

| State         | Volume of sales |         | Price             |         | Value of sales |         |
|---------------|-----------------|---------|-------------------|---------|----------------|---------|
|               | 2006/07         | 2007/08 | 2006/07           | 2007/08 | 2006/07        | 2007/08 |
|               | 1,000 pounds    |         | Dollars per pound |         | 1,000 dollars  |         |
| Pennsylvania  | 496,566         | 496,721 | 0.891             | 0.912   | 442,292        | 453,013 |
| California    | 117,851         | 114,318 | 1.590             | 1.620   | 187,473        | 185,662 |
| Other States  | 199,432         | 181,807 | 1.433             | 1.510   | 285,796        | 274,911 |
| United States | 813,849         | 792,846 | 1.120             | 1.500   | 915,561        | 913,586 |

Source: USDA, National Agricultural Statistics Service, *Mushrooms*.

Table 14--U.S. brown agaricus & specialty mushrooms: Sales, price, and value

| State         | Volume of sales |         | Price             |         | Value of sales |         |
|---------------|-----------------|---------|-------------------|---------|----------------|---------|
|               | 2006/07         | 2007/08 | 2006/07           | 2007/08 | 2006/07        | 2007/08 |
|               | 1,000 pounds    |         | Dollars per pound |         | 1,000 dollars  |         |
| Brown 1/      | 99,189          | 104,862 | 1.41              | 1.37    | 139,899        | 143,435 |
| All specialty | 14,153          | 16,188  | 2.86              | 3.08    | 40,438         | 49,936  |
| Shiitake      | 6,985           | 9,890   | 3.22              | 2.81    | 22,508         | 27,794  |
| Oyster        | 5,055           | 4,253   | 2.26              | 2.87    | 11,424         | 12,206  |
| Other         | 2,113           | 2,045   | 3.08              | 4.86    | 6,506          | 9,936   |
| Total         | 113,342         | 121,050 | 1.59              | 1.60    | 180,337        | 193,371 |

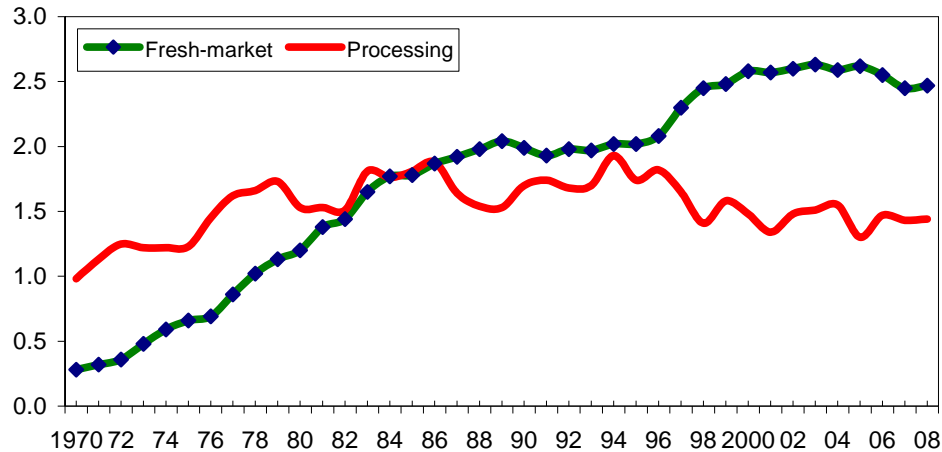
1/ Includes Portobello and Crimini.

Source: USDA, National Agricultural Statistics Service, *Mushrooms*.

Figure 9

**U.S. mushrooms: Per capita net domestic disappearance, 1970-2008**

Lbs/person



Source: Calculated by USDA, ERS.

## Dry Beans

### Record Yields Temper Production Decline

The first estimate of the 2008 dry bean crop indicated a 5-percent reduction from a year earlier (table 15). This was a little better than initially projected due to a second consecutive year of above average yields. However, in order to attain these projected yields, some growing areas will require the cooperation of Mother Nature. Although harvest had begun in the Northwest, crop maturity was a week or so later than average in other growing regions. As a result, some growers may need a late summer and early fall devoid of frost and heavy rain to get a quality crop into the bin. The initial crop estimate indicated national yields in 2008 could average 17.86 cwt per acre—4 percent above a year earlier and, if realized, would be a record high (figure 10). Record-high yields are projected for North Dakota and Wyoming. New York expects its best yields of the past 5 years, while Wisconsin may see its first increase in dry bean yields since the 2004 record high.

Table 15--U.S. dry beans: Production, 2005-2008

| Item          | 2005          | 2006   | 2007   | 2008 p | Percent change |
|---------------|---------------|--------|--------|--------|----------------|
|               | --1,000 cwt-- |        |        |        | Percent        |
| North Dakota  | 8,588         | 7,680  | 10,574 | 9,488  | -10.3          |
| Michigan      | 3,910         | 4,085  | 3,120  | 3,053  | -2.1           |
| Nebraska      | 3,870         | 2,728  | 2,418  | 2,530  | 4.6            |
| Minnesota     | 2,430         | 2,228  | 2,610  | 2,520  | -3.4           |
| Idaho         | 1,862         | 1,906  | 1,602  | 1,521  | -5.1           |
| California    | 1,385         | 1,209  | 1,212  | 1,071  | -11.6          |
| Colorado      | 1,320         | 1,140  | 736    | 1,020  | 38.6           |
| Washington    | 792           | 968    | 1,020  | 850    | -16.7          |
| Wyoming       | 776           | 590    | 555    | 708    | 27.6           |
| Others        | 1,839         | 1,713  | 1,524  | 1,411  | -7.4           |
| United States | 26,772        | 24,247 | 25,371 | 24,172 | -4.7           |

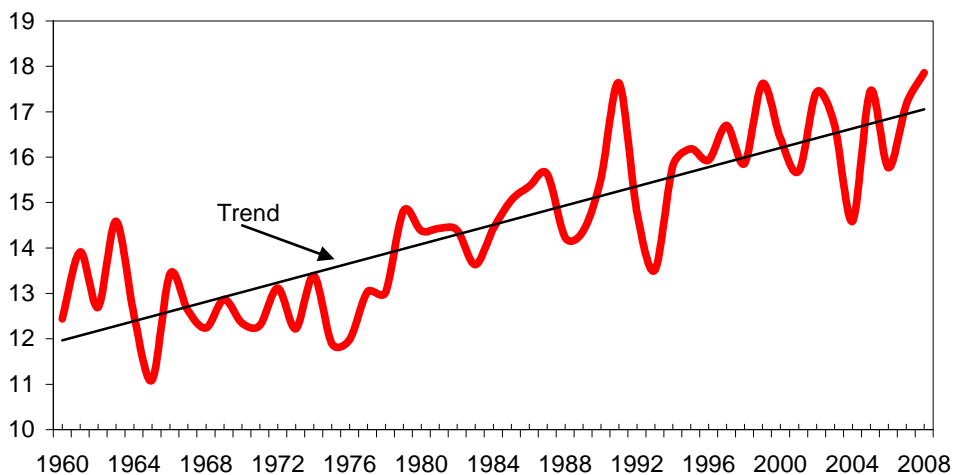
p = NASS preliminary August estimate.

Source: USDA, National Agricultural Statistics Service, *Crop Production*.

Figure 10

### U.S. dry beans, all: Average yield per acre, 1960-2008 1/

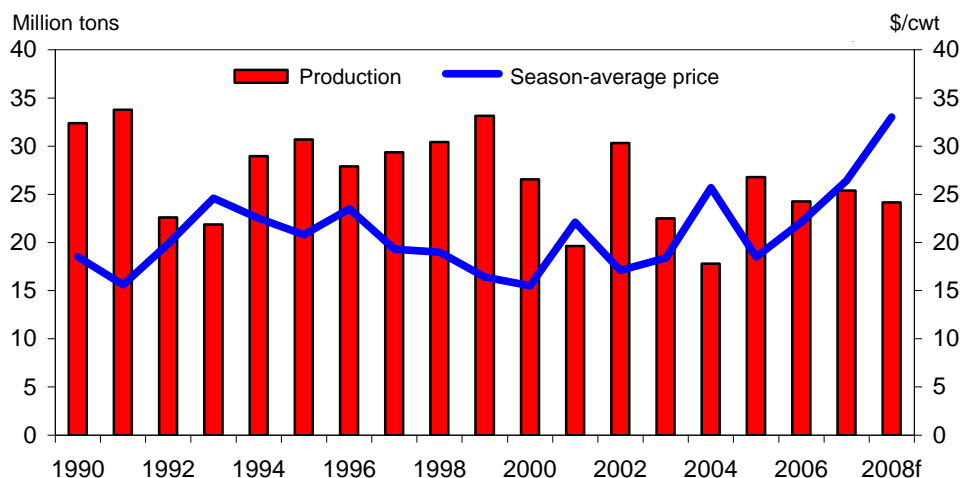
Cwt/acre 1/



1/ Cwt = 100 pound units.

Source: USDA, National Agricultural Statistics Service, *Crop Production*.

Figure 11

**U.S. dry edible beans: Production & season-average price**

f = forecast.

Source: USDA, National Agricultural Statistics Service, *Crop Production, Agricultural Prices*.

Table 16--U.S. dry beans: Area planted by class, 2005-08

| Item                 | 2005           | 2006           | 2007           | 2008 p         | Percent change |
|----------------------|----------------|----------------|----------------|----------------|----------------|
| --1,000 acres --     |                |                |                |                |                |
| Pinto                | 784.8          | 690.9          | 694.1          | 573.8          | -17.3          |
| Navy                 | 236.4          | 280.7          | 221.9          | 247.4          | 11.5           |
| Black                | 111.6          | 167.4          | 175.7          | 159.0          | -9.5           |
| Large chickpeas 1/   | 79.3           | 119.4          | 114.4          | 75.8           | -33.7          |
| Light red kidney     | 71.4           | 43.4           | 47.4           | 47.1           | -0.6           |
| Great Northern       | 72.8           | 69.7           | 59.5           | 74.7           | 25.5           |
| Dark red kidney      | 60.7           | 48.8           | 40.2           | 49.6           | 23.4           |
| Small red            | 50.9           | 35.5           | 30.6           | 39.5           | 29.1           |
| Pink                 | 37.9           | 45.3           | 30.8           | 26.7           | -13.3          |
| Blackeye             | 23.0           | 31.4           | 27.8           | 21.1           | -24.1          |
| Babylima             | 16.7           | 13.5           | 16.0           | 11.7           | -26.9          |
| Large lima           | 15.1           | 12.9           | 13.9           | 15.5           | 11.5           |
| Cranberry            | 12.4           | 9.8            | 8.6            | 8.4            | -2.3           |
| Others 2/            | 57.0           | 61.1           | 46.0           | 51.6           | 12.2           |
| <b>United States</b> | <b>1,630.0</b> | <b>1,629.8</b> | <b>1,526.9</b> | <b>1,401.9</b> | <b>-8.2</b>    |

p = NASS preliminary August estimate. 1/ Excludes small chickpeas. 2/ Includes small chickpeas, small white, and other miscellaneous classes.

Source: USDA, National Agricultural Statistics Service, *Crop Production*.

U.S. dry bean growers ultimately reduced planted area 8 percent due mostly to strong competition with other field crops. As a result, estimated area available for harvest is also forecast to decline 8 percent to 1.35 million acres. In 11 of the 18 surveyed States harvested area was expected to be down. North Dakota, which accounted for 42 percent of U.S. dry bean seeded area (down from 45 percent in 2007), expects to harvest 14 percent fewer acres in 2008, with increases in navy and black beans being outweighed by declining pinto, garbanzo, and pink bean area. Harvested area in Michigan, the second-leading producing State, is expected to drop 5 percent in 2008, with reduced acreage for black and light-red kidney beans outweighing increases in navy and small red beans.



With lower acreage outweighing strong yields, production is expected to decline in 11 of the 18 States included in the USDA dry bean survey. The largest reductions are expected in Washington, California, and North Dakota. If realized, the 2008 North Dakota dry bean crop would be the fourth largest on record and comes after last year's sizeable output—the second-largest on record. Growers in Michigan, the second-leading producer, initially anticipated below-average yields due to excessive rain early in the growing season. However, crop conditions have improved somewhat in the State since the August estimate was released. Thus, with good fall weather, yields could improve enough to push Michigan's production above last year's level.

Because harvested area and yield are moving in opposite directions this year, making an early estimate on which classes will see larger production and which will decline is a bit tenuous. Based on planted area estimates released in August (table 16) and yield patterns in major States, it appears that production could be lower for about half of the of the estimated classes including pinto, black, garbanzo, baby lima, blackeye, cranberry, and pink beans—with the majority of the decline in pintos. Increased output is expected for navy, Great Northern, dark red kidney, large lima, small red, and miscellaneous beans—classes which account for about a third of the U.S. dry bean crop. USDA will release the first official estimate of production by class in the December 11 *Crop Production* report.

### ***Prices Higher in 2007/08, Likely To Stay Strong in 2008/09***

During the first 11 months of 2007/08, grower prices across all classes of dry beans averaged \$30.67—31 percent above a year ago. With the exception of California, grower prices averaged above a year earlier in every major dry bean State. The greatest year-over-year increase was in Michigan, where September-July prices averaged 59 percent higher to \$35.99 per cwt. The next closest state was Nebraska where grower prices averaged 42 percent above a year earlier through July. In Michigan, the market has been supported mostly by strong navy bean and kidney bean prices, while Great Northern and pinto bean prices have given Nebraska's dry bean market a boost.

For the most part, dry bean prices over the next year are expected to remain relatively strong given the annual hand-to-mouth nature of the current market. Prices will likely remain under pressure given limited stock buffers for most classes, steady domestic demand, strong export demand, and the need to remain competitive with alternative field crops. During the 2008/09 season, prices and per-acre returns for the major field crops (wheat, corn, soybeans) are expected to average above those of the previous year. This will also play a role in the dry bean market as prices will need to be competitive early next year when growers are making their cropping decisions. The current price outlook for the 2009/10 season is less certain, but with world stocks of many field crops improving, some weakening of average prices (back to the 2007/08 averages) is projected.

During June and July of 2008, the Producer Price Index for canned dry beans began to reflect higher ingredient costs, rising 6 percent from a year earlier after remaining largely unchanged over the first 5 months of the year. During June and July of 2008, the retail price for dry packaged beans averaged 21 percent above a year earlier and 11 percent above the average of the first 5 months of the year. In July, consumers paid an average of \$1.23 per pound for packaged dry beans, up 2 percent from June, but up 27 percent from a year ago and 47 percent above 2 years ago.

## Export Volume Strong

Continued food aid demand plus the moderating effect of the weaker U.S. dollar on high domestic dry bean prices helped push the volume of dry bean exports up 22 percent from a year ago over first 10 months of 2007/08 (September-June).

Limited world supplies plus the weaker dollar helped support gains in exports for several bean classes (table 17). Shipment volume has risen despite higher prices—unit export value increased 14 percent to 32.8 cents per pound through June.

While export movement improved to Canada (up 40 percent) and the Dominican Republic (up 50 percent), less volume was shipped to Mexico (down 18 percent), Japan (down 4 percent), and Haiti (down 5 percent). Export sales to the United Kingdom increased 53 percent, led by navy and dark red kidney beans. Greater volume was also shipped to Italy, Turkey (largely Great Northern), India, and Zimbabwe (largely pinto and dark red kidney).

In calendar 2007, the United States exported about 17 percent of its dry bean supplies (production, stocks, and imports), compared with 20 percent a year earlier. During the first 6 months of 2008, despite dwindling supplies and higher prices stemming from last year's modest crop, export movement was strong. Even if the current pace were to slow through the end of the year, U.S. dry bean export volume would likely still be the largest this decade and the greatest since 1998.

Table 17--U.S. dry beans: Crop year export volume to date

| Item                         | Crop year<br>2006/07 | September - June |         | Change<br>2006-07 |         |
|------------------------------|----------------------|------------------|---------|-------------------|---------|
|                              |                      | 2005/06          | 2006/07 |                   | 2007/08 |
| ----- 1,000 cwt (bags) ----- |                      |                  |         | Percent           |         |
| Pinto                        | 1,915                | 2,198            | 1,602   | 1,734             | 8       |
| Navy                         | 1,217                | 981              | 1,065   | 1,348             | 27      |
| Black                        | 1,186                | 613              | 909     | 782               | -14     |
| Garbanzo                     | 455                  | 358              | 391     | 471               | 20      |
| Great Northern               | 366                  | 802              | 341     | 719               | 111     |
| Baby lima                    | 251                  | 225              | 235     | 209               | -11     |
| Light red kidney             | 181                  | 133              | 169     | 161               | -5      |
| Dark red kidney              | 158                  | 234              | 124     | 255               | 105     |
| Cranberry                    | 132                  | 72               | 93      | 80                | -14     |
| Large lima                   | 103                  | 127              | 96      | 72                | -25     |
| Small red                    | 99                   | 157              | 78      | 70                | -10     |
| Mung & urd                   | 27                   | 22               | 26      | 19                | -26     |
| Blackeye                     | 19                   | 30               | 15      | 20                | 34      |
| Pink                         | 15                   | 51               | 15      | 55                | 282     |
| Other                        | 718                  | 665              | 548     | 951               | 73      |
| Total                        | 6,841                | 6,667            | 5,707   | 6,946             | 22      |

Source: Compiled by ERS from data of the U.S. Department of Commerce, U.S. Census Bureau.

Table 18--U.S. dry beans: Crop year import volume to date

| Item                         | Crop year<br>2006/07 | September - June |         | Change<br>2006-07 |         |
|------------------------------|----------------------|------------------|---------|-------------------|---------|
|                              |                      | 2005/06          | 2006/07 |                   | 2007/08 |
| ----- 1,000 cwt (bags) ----- |                      |                  |         | Percent           |         |
| Black                        | 499                  | 220              | 410     | 392               | -4      |
| Garbanzo, all                | 295                  | 202              | 240     | 305               | 27      |
| Other                        | 1,979                | 1,421            | 1,676   | 1,952             | 16      |
| Total                        | 2,772                | 1,843            | 2,326   | 2,648             | 14      |

Source: Compiled by ERS from data of the U.S. Department of Commerce, U.S. Census Bureau.

## Dry Peas and Lentils

### Area Down, Production Expected Lower

U.S. dry pea and lentil harvested acreage is forecast to decline 3 percent from a year earlier to 1.1 million acres. The greatest decline is expected to occur in large chickpeas (down 36 percent) in part because prices were not competitive with alternative crops this spring. Because of 2 consecutive strong U.S. and Canadian crops in 2006 and 2007, chickpea prices and returns started the year at a lower level than most other crops, putting this already more challenging crop at a competitive disadvantage relative to most others. For example, April prices for most pulse crops were about double those of a year earlier, while chickpeas were running just 17 percent above the relatively pedestrian levels of 2007. For all chickpeas, grower prices are expected to average well above a year earlier given lower world supplies and smaller output in both the United States and Canada.

On the other hand, returns for dry edible peas remained competitive with wheat and other alternative crops. As a result, growers expect to harvest only slightly less dry pea area this year. Although June 1 stocks of dry peas were reported to be up 33

Table 19--Drypeas and lentils: Harvested area 1/

| Item                 | 2005                    | 2006           | 2007           | 2008 f         | Change<br>2007-08 2/ |
|----------------------|-------------------------|----------------|----------------|----------------|----------------------|
|                      | ----- 1,000 acres ----- |                |                |                | Percent              |
| Dry peas             | 765.9                   | 884.1          | 811.3          | 807.8          | 0                    |
| Austrian winter peas | 24.5                    | 22.5           | 11.0           | 8.8            | -20                  |
| Lentils, all         | 439.0                   | 407.0          | 295.0          | 272.0          | -8                   |
| Small chickpeas 1/   | 10.5                    | 17.4           | 11.1           | 10.7           | -4                   |
| Large chickpeas 1/   | 79.3                    | 119.4          | 114.4          | 73.5           | -36                  |
| <b>Total</b>         | <b>1,239.9</b>          | <b>1,331.0</b> | <b>1,128.4</b> | <b>1,099.3</b> | <b>-3</b>            |

f = NASS forecast. 1/ ERS forecast for 2008 based on NASS area planted.

Source: USDA, National Agricultural Statistics Service, *Crop Production*.

Table 20--U.S. dry peas and lentils: Monthly prices by class, 2007-08

| Commodity             | 2007                    |       | 2008  |         | Chg. prev. year: |      |
|-----------------------|-------------------------|-------|-------|---------|------------------|------|
|                       | July                    | Aug.  | July  | Aug. 1/ | Nov.             | Dec. |
|                       | --- Cents per pound --- |       |       |         | --- Percent ---  |      |
| <i>Dealer prices:</i> |                         |       |       |         |                  |      |
| Green peas, whole     | 15.20                   | 15.31 | 27.50 | 27.50   | 80.9             | 79.6 |
| Yellow peas, whole    | 14.25                   | 14.25 | 26.50 | 25.50   | 86.0             | 78.9 |
| Green peas, split     | 19.50                   | 19.50 | 31.40 | 31.50   | 61.0             | 61.5 |
| Yellow peas, split    | 18.45                   | 18.75 | 30.25 | --      | 64.0             | --   |
| Lentils, brewer       | 19.75                   | 22.25 | 40.50 | --      | 105.1            | --   |
| Lentils, pardina      | 25.50                   | 26.25 | 41.00 | --      | 60.8             | --   |
| Chickpeas             | 36.50                   | 36.00 | 51.30 | 52.17   | 40.5             | 44.9 |
| <i>Grower prices:</i> |                         |       |       |         |                  |      |
| Green peas, whole     | 10.63                   | 10.72 | 18.90 | 18.25   | 77.8             | 70.2 |
| Yellow peas, whole    | 9.60                    | 9.75  | 17.63 | 15.07   | 83.6             | 54.6 |
| Lentils, brewer       | 15.25                   | 18.00 | 34.20 | 34.50   | 124.3            | 91.7 |
| Lentils, pardina      | 19.35                   | 20.00 | 34.20 | --      | 76.7             | --   |
| Chickpeas             | 29.50                   | 29.00 | 40.50 | 42.00   | 37.3             | 44.8 |

-- = not available. 1/ August 2008 are partial-month averages. All prices are ID/WA No. 1 grade.

Source: Adapted by ERS from weekly data provided by USDA, AMS, *Bean Market News*.

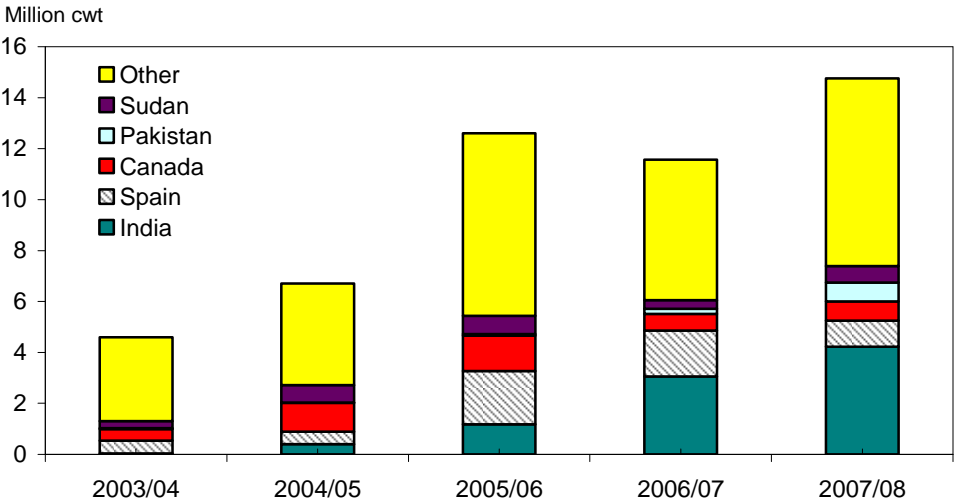
percent from the relatively low level of the previous year, little impact was noted in a market continuing to enjoy good demand. With average yields expected, U.S. production of dry peas is expected to decline 5 to 10 percent from the 15.9 million cwt of 2007. Some recent harvest period weakness in yellow peas has been noted, but with Canadian and world dry pea supplies projected to be somewhat higher, prices for all dry peas could weaken but should remain above year-earlier levels until late winter.

Competing in world lentil markets has been more difficult for U.S. shippers, with harvested area expected to decline 8 percent this year—the third consecutive annual decline since area peaked in 2005. Mirroring world lentil supplies, June 1 stocks were down 9 percent from a year earlier and were low relative to historical levels. As a result, lentil grower prices continue to run at more than twice the relatively strong levels of a year earlier. Even with average to above-average yields, U.S. lentil production is expected to decline 10 to 15 percent from the 3.4 million cwt of 2007. With little change (or even a small drop) in world supplies and good world commercial and food aid demand, lentil prices are likely to maintain their strength over the coming marketing year. The first production estimate for 2008 dry peas and lentils will be released in the November 10 *Crop Production* report.

**Exports Surge in 2007/08**

During the 2007/08 marketing year (July-June), U.S. export volume for dry peas and lentils surged 28 percent to 14.8 million cwt, valued at a record \$272 million. With the exception of Austrian winter peas, volume was higher for every product class, led by split peas and miscellaneous dry peas. For the second consecutive year, production shortfalls compelled India to increase pulse crop imports from the United States. India accounted for 29 percent of 2007/08 U.S. dry pea and lentil export volume—up from 26 percent a year earlier. In 2005/06 when Spain was the top foreign market, India was third with 9 percent of volume. About 43 percent of the volume shipped to India in 2007/08 consisted of green peas and 32 percent was miscellaneous peas. Rounding out the top three foreign destinations in 2007/08 were Spain (7 percent of the total) and Canada (5 percent).

Figure 12  
**U.S. dry pea and lentil exports to selected destinations, 2003/04-07/08 1/**



1/ Includes all dry peas, lentils, and chickpeas.  
 Source: Derived by ERS from data of U.S. Dept. of Commerce, U.S. Census Bureau.

## Contacts and Links

### Contact Information

#### Gary Lucier

Tel: (202) 694-5253 Fax: (202) 694-5820 Email: [Glucier@ers.usda.gov](mailto:Glucier@ers.usda.gov)

#### Rachael Dettmann

Tel: (202) 694-5266 Fax: (202) 694-5286 Email: [RDettmann@ers.usda.gov](mailto:RDettmann@ers.usda.gov)

Covers potatoes and sweet potatoes.

### Subscription Information

Subscribe to ERS' e-mail notification service <http://www.ers.usda.gov/updates/> to receive timely notification of newsletter availability. Printed copies may be purchased from the USDA Order Desk by calling 1-800-999-6779 (specify the issue number or series SUB-VGS-4039).

### E-mail Notification

Readers of ERS outlook reports have two ways they can receive an e-mail notice about release of reports and associated data.

- Receive timely notification (soon after the report is posted on the web) via USDA's Economics, Statistics and Market Information System (which is housed at Cornell University's Mann Library). Go to <http://usda.mannlib.cornell.edu/MannUsda/aboutEmailService.do> and follow the instructions to receive e-mail notices about ERS, Agricultural Marketing Service, National Agricultural Statistics Service, and World Agricultural Outlook Board products.

- Receive weekly notification (on Friday afternoon) via the ERS website. Go to <http://www.ers.usda.gov/Updates/> and follow the instructions to receive notices about ERS outlook reports, *Amber Waves* magazine, and other reports and data products on specific topics. ERS also offers RSS (really simple syndication) feeds for all ERS products. Go to <http://www.ers.usda.gov/rss/> to get started.

### Articles

The following are links to articles released on subjects directly related to the vegetable and melon industry. These articles are in Adobe Acrobat (.pdf) format:

#### **1. Profile of Hired Farmworkers, A 2008 Update**

<http://www.ers.usda.gov/Publications/ERR60/>

This report presents an economic profile of hired farmworkers, which make up a third of the total agricultural labor force and are critical to U.S. agricultural production, particularly in labor-intensive sectors such as fruits and vegetables.

#### **2. Effects of Marketing Loans on U.S. Dry Peas and Lentils: Supply Response and World Trade**

<http://www.ers.usda.gov/Publications/ERR58/>

Acreage for dry peas and lentils has increased since passage of the 2002 Farm Act. This report examines the role of marketing loans in the acreage increase and the impact on international trade.

#### **3. Price Trends Are Similar for Fruits, Vegetables, and Snack Foods**

<http://www.ers.usda.gov/Publications/err55/>

For commonly consumed fresh fruits and vegetables for which quality has remained fairly constant, analysis of price trends reveals a price decline similar to that of dessert and snack foods. This price trend evidence suggests that the price of a healthy diet has not changed relative to an unhealthy one.

#### **4. Fruit and Vegetable Background**

<http://www.ers.usda.gov/Publications/vgs/apr06/VGS31301/>

*Fruit and Vegetable Background* describes the economic characteristics of the U.S. fruit and vegetable industry, providing supply, demand, and policy background for an industry that accounts for nearly a third of U.S. crop cash receipts and a fifth of U.S. agricultural exports. A variety of challenges face this complex and diverse industry in both domestic and international markets, ranging from immigration reform and its effects on labor availability, to international competitiveness.

## **5. Factors Affecting Carrot Consumption in the United States**

<http://www.ers.usda.gov/publications/vgs/2007/03Mar/VGS31901/>

Examines the consumption distribution of fresh-market (including fresh-cut) and processed carrots in the United States. The majority of carrots are purchased at retail and consumed at home, with at-home per capita consumption of fresh baby/cut carrots greatest in the central and eastern regions. Non-Hispanic Whites and Asians were found to consume the most carrots.

## **Data Tables**

The following links provide the most recent data on vegetables and melons. You may choose links for Adobe Acrobat (.pdf) table compilations or the original Excel workbook (spreadsheet) tables:

### **1. Per capita availability (a.k.a. domestic use or consumption)**

PDF file: <http://www.ers.usda.gov/publications/vgs/tables/percap.pdf>

Excel file: <http://www.ers.usda.gov/publications/vgs/tables/percap.xls>

### **2. Vegetable prices**

PDF file: <http://www.ers.usda.gov/publications/vgs/tables/price.pdf>

Excel file: <http://www.ers.usda.gov/publications/vgs/tables/price.xls>

### **3. Fresh vegetables and melons**

PDF file: <http://www.ers.usda.gov/publications/vgs/tables/fresh.pdf>

Excel file: <http://www.ers.usda.gov/publications/vgs/tables/fresh.xls>

### **4. Processing vegetables**

PDF file: <http://www.ers.usda.gov/publications/vgs/tables/proc.pdf>

Excel file: <http://www.ers.usda.gov/publications/vgs/tables/proc.xls>

### **5. Potatoes**

PDF file: <http://www.ers.usda.gov/publications/vgs/tables/potat.pdf>

Excel file: <http://www.ers.usda.gov/publications/vgs/tables/potat.xls>

### **6. Sweet potatoes**

PDF file: <http://www.ers.usda.gov/publications/vgs/tables/swpot.pdf>

Excel file: <http://www.ers.usda.gov/publications/vgs/tables/swpot.xls>

### **7. Dry edible beans**

PDF file: <http://www.ers.usda.gov/publications/vgs/tables/drybn.pdf>

Excel file: <http://www.ers.usda.gov/publications/vgs/tables/drybn.xls>

### **8. Mushrooms**

PDF file: <http://www.ers.usda.gov/publications/vgs/tables/mush.pdf>

Excel file: <http://www.ers.usda.gov/publications/vgs/tables/mush.xls>

### **9. Vegetable and melon trade**

PDF file: <http://www.ers.usda.gov/publications/vgs/tables/trade.pdf>

Excel file: <http://www.ers.usda.gov/publications/vgs/tables/trade.xls>

### **10. Dry peas and lentils**

PDF file: <http://www.ers.usda.gov/publications/vgs/tables/drypea.pdf>

Excel file: <http://www.ers.usda.gov/publications/vgs/tables/drypea.xls>

### **11. World vegetable production and harvested area**

PDF file: <http://www.ers.usda.gov/publications/vgs/tables/world.pdf>

Excel file: <http://www.ers.usda.gov/publications/vgs/tables/world.xls>

## 12. Mexican and Canadian vegetable production

PDF file: <http://www.ers.usda.gov/publications/vgs/tables/Mexcan.pdf>

Excel file: <http://www.ers.usda.gov/publications/vgs/tables/Mexcan.xls>

## 13. U.S. farm cash receipts and cost indicators

PDF file: <http://www.ers.usda.gov/publications/vgs/tables/Receipt.pdf>

Excel file: <http://www.ers.usda.gov/publications/vgs/tables/Receipt.xls>

## Web Sites

**A. U.S. Trade Data—FASonline:** This relatively simple, yet powerful online application allows the user to freely access and download detailed U.S. export and import data.

<http://www.fas.usda.gov/ustrade/>

**B. Vegetables and Melons:** ERS' Vegetables and Melons Briefing Room contains special articles, data sets, and links (the tomato background page is found here).

<http://www.ers.usda.gov/briefing/vegetables/>

**C. Potatoes:** ERS' Potato Briefing Room contains special articles, data, and links.

<http://www.ers.usda.gov/briefing/potatoes/>

**D. Dry Beans, Peas, and Lentils:** ERS' Dry Bean Briefing Room contains special articles, data, and links.

<http://www.ers.usda.gov/briefing/drybeans/>

**E. USDA Market News:** Agricultural Marketing Service's web site containing fresh shipments, f.o.b. and terminal market prices, weekly truck rates, annual reports, and more.

<http://www.marketnews.usda.gov/portal/fv>

**F. NASS Vegetables:** Links to USDA, National Agricultural Statistics Service's annual and quarterly reports on vegetables & melons.

<http://usda.mannlib.cornell.edu/MannUsda/viewDocumentInfo.do?documentID=1177>

**G. Refrigerated Truck Quarterly:** USDA, Agricultural Marketing Service's quarterly newsletter detailing refrigerated truck movement, rates, and issues.

<http://www.ams.usda.gov/AMSV1.0/getfile?dDocName=STELPRDC5069457&acct=atgeninfo>

**I. Organic Farming and Marketing:** USDA, ERS Briefing Room contains articles, data, graphics, and links.

<http://www.ers.usda.gov/Briefing/Organic/>

**J. FAS Fruit and Vegetable Page:** USDA, Foreign Agricultural Services page with special articles, country horticultural reports, presentation and charts, data, and links.

[http://www.fas.usda.gov/http/fruit\\_veg.asp](http://www.fas.usda.gov/http/fruit_veg.asp)

The U.S. Department of Agriculture (USDA) prohibits discrimination in all its programs and activities on the basis of race, color, national origin, age, disability, and, where applicable, sex, marital status, familial status, parental status, religion, sexual orientation, genetic information, political beliefs, reprisal, or because all or a part of an individual's income is derived from any public assistance program. (Not all prohibited bases apply to all programs.) Persons with disabilities who require alternative means for communication of program information (Braille, large print, audiotope, etc.) should contact USDA's TARGET Center at (202) 720-2600 (voice and TDD). To file a complaint of discrimination write to USDA, Director, Office of Civil Rights, 1400 Independence Avenue, S.W., Washington, D.C. 20250-9410 or call (800) 795-3272 (voice) or (202) 720-6382 (TDD). USDA is an equal opportunity provider and employer.



**Price table 1—Commercial vegetables and potatoes: Indexes of prices received by U.S. growers, by month, 1997-2008 1/**

| Item                     | Year  | Jan.  | Feb.  | Mar.  | Apr.  | May   | June  | July | Aug.  | Sep.  | Oct.  | Nov.  | Dec.  | Annual |
|--------------------------|-------|-------|-------|-------|-------|-------|-------|------|-------|-------|-------|-------|-------|--------|
| ----- 1910-14=100 -----  |       |       |       |       |       |       |       |      |       |       |       |       |       |        |
| Commercial vegetables 2/ | 1997  | 740   | 700   | 789   | 754   | 710   | 751   | 747  | 817   | 794   | 971   | 817   | 911   | 792    |
|                          | 1998  | 816   | 775   | 837   | 1,042 | 859   | 736   | 806  | 764   | 760   | 886   | 756   | 779   | 818    |
|                          | 1999  | 702   | 749   | 806   | 870   | 786   | 732   | 696  | 709   | 700   | 650   | 654   | 776   | 736    |
|                          | 2000  | 656   | 572   | 719   | 907   | 874   | 785   | 795  | 862   | 958   | 835   | 964   | 768   | 808    |
|                          | 2001  | 810   | 980   | 923   | 916   | 964   | 805   | 837  | 968   | 894   | 688   | 731   | 1,144 | 888    |
|                          | 2002  | 1,054 | 1,283 | 1,816 | 803   | 770   | 731   | 771  | 807   | 795   | 704   | 735   | 694   | 914    |
|                          | 2003  | 752   | 755   | 824   | 865   | 924   | 1,015 | 797  | 920   | 964   | 959   | 1,201 | 1,059 | 920    |
|                          | 2004  | 852   | 936   | 741   | 848   | 722   | 712   | 666  | 852   | 864   | 1,037 | 1,055 | 792   | 840    |
|                          | 2005  | 620   | 785   | 1,100 | 1,212 | 900   | 923   | 749  | 789   | 849   | 756   | 758   | 1,017 | 872    |
|                          | 2006  | 855   | 768   | 890   | 1,007 | 1,040 | 877   | 794  | 1,018 | 1,066 | 825   | 793   | 1,001 | 911    |
| 2007                     | 1,186 | 1,103 | 1,286 | 1,210 | 963   | 887   | 839   | 979  | 1,039 | 1,312 | 930   | 924   | 1,055 |        |
| 2008                     | 930   | 799   | 904   | 1,099 | 975   | 1,026 | 988   |      |       |       |       |       |       |        |
| Potatoes 3/              | 1997  | 426   | 431   | 433   | 433   | 477   | 431   | 499  | 544   | 440   | 433   | 457   | 477   | 457    |
|                          | 1998  | 491   | 524   | 554   | 546   | 559   | 539   | 517  | 481   | 449   | 415   | 450   | 475   | 500    |
|                          | 1999  | 489   | 497   | 520   | 546   | 532   | 557   | 610  | 517   | 451   | 429   | 474   | 463   | 507    |
|                          | 2000  | 475   | 496   | 519   | 545   | 529   | 511   | 559  | 464   | 406   | 384   | 383   | 395   | 472    |
|                          | 2001  | 409   | 450   | 437   | 466   | 453   | 486   | 532  | 632   | 516   | 461   | 538   | 578   | 497    |
|                          | 2002  | 620   | 645   | 715   | 699   | 748   | 806   | 884  | 651   | 520   | 466   | 524   | 547   | 652    |
|                          | 2003  | 533   | 554   | 567   | 592   | 590   | 559   | 570  | 483   | 458   | 443   | 479   | 493   | 527    |
|                          | 2004  | 488   | 504   | 530   | 568   | 558   | 558   | 552  | 495   | 485   | 444   | 477   | 506   | 514    |
|                          | 2005  | 534   | 535   | 578   | 566   | 576   | 573   | 622  | 574   | 491   | 472   | 539   | 578   | 553    |
|                          | 2006  | 596   | 571   | 706   | 700   | 661   | 702   | 808  | 652   | 526   | 503   | 578   | 600   | 634    |
| 2007                     | 619   | 649   | 689   | 745   | 686   | 670   | 740   | 605  | 540   | 532   | 603   | 631   | 642   |        |
| 2008                     | 654   | 680   | 743   | 756   | 814   | 929   | 996   |      |       |       |       |       |       |        |
| ----- 1990-92=100 -----  |       |       |       |       |       |       |       |      |       |       |       |       |       |        |
| Commercial vegetables 2/ | 1997  | 111   | 105   | 118   | 113   | 106   | 112   | 112  | 122   | 119   | 145   | 122   | 136   | 118    |
|                          | 1998  | 122   | 116   | 125   | 156   | 129   | 110   | 121  | 114   | 114   | 133   | 113   | 117   | 123    |
|                          | 1999  | 105   | 112   | 121   | 130   | 118   | 110   | 104  | 106   | 105   | 97    | 98    | 116   | 110    |
|                          | 2000  | 98    | 86    | 108   | 136   | 131   | 117   | 119  | 129   | 143   | 125   | 144   | 115   | 121    |
|                          | 2001  | 121   | 147   | 138   | 137   | 144   | 120   | 125  | 145   | 134   | 103   | 109   | 171   | 133    |
|                          | 2002  | 158   | 192   | 272   | 120   | 115   | 109   | 115  | 121   | 119   | 105   | 110   | 104   | 137    |
|                          | 2003  | 112   | 113   | 123   | 129   | 138   | 152   | 119  | 138   | 144   | 143   | 180   | 159   | 138    |
|                          | 2004  | 127   | 140   | 111   | 127   | 108   | 107   | 100  | 127   | 129   | 155   | 158   | 119   | 126    |
|                          | 2005  | 93    | 117   | 165   | 181   | 135   | 138   | 112  | 118   | 127   | 113   | 113   | 152   | 130    |
|                          | 2006  | 128   | 115   | 133   | 151   | 156   | 131   | 119  | 152   | 160   | 123   | 119   | 150   | 136    |
| 2007                     | 177   | 165   | 192   | 181   | 144   | 133   | 126   | 147  | 155   | 196   | 139   | 138   | 158   |        |
| 2008                     | 139   | 120   | 135   | 164   | 146   | 154   | 148   |      |       |       |       |       |       |        |
| Potatoes 3/              | 1997  | 84    | 85    | 86    | 85    | 94    | 85    | 99   | 107   | 87    | 85    | 90    | 94    | 90     |
|                          | 1998  | 97    | 104   | 109   | 108   | 111   | 106   | 102  | 95    | 89    | 82    | 89    | 94    | 99     |
|                          | 1999  | 97    | 98    | 103   | 108   | 105   | 110   | 121  | 102   | 89    | 85    | 94    | 91    | 100    |
|                          | 2000  | 94    | 98    | 103   | 108   | 105   | 101   | 110  | 92    | 80    | 76    | 76    | 78    | 93     |
|                          | 2001  | 81    | 89    | 86    | 92    | 90    | 96    | 105  | 125   | 102   | 91    | 106   | 114   | 98     |
|                          | 2002  | 123   | 127   | 141   | 138   | 148   | 159   | 175  | 129   | 103   | 92    | 104   | 108   | 129    |
|                          | 2003  | 105   | 110   | 112   | 117   | 117   | 110   | 113  | 96    | 90    | 87    | 95    | 97    | 104    |
|                          | 2004  | 96    | 100   | 105   | 112   | 110   | 110   | 109  | 98    | 96    | 88    | 94    | 100   | 102    |
|                          | 2005  | 106   | 106   | 114   | 112   | 114   | 113   | 123  | 113   | 97    | 93    | 106   | 114   | 109    |
|                          | 2006  | 118   | 113   | 139   | 138   | 131   | 139   | 160  | 129   | 104   | 99    | 113   | 116   | 125    |
| 2007                     | 122   | 128   | 136   | 147   | 136   | 132   | 146   | 120  | 107   | 105   | 119   | 125   | 127   |        |
| 2008                     | 129   | 134   | 147   | 149   | 161   | 184   | 197   |      |       |       |       |       |       |        |

1/ Prices for 2008 are preliminary. 2/ Includes fresh and processing vegetables. 3/ Includes fresh potatoes and dry edible beans.

For longer historical price series, see the *Vegetables and Melons Situation and Outlook Yearbook* at:

<http://usda.mannlib.cornell.edu/MannUsda/viewDocumentInfo.do?documentID=1212>

Source: USDA, National Agricultural Statistics Service, *Agricultural Prices*.

**Price table 2--Fresh vegetables: U.S. monthly and season-average f.o.b. shipping-point prices, 2004-08 1/**

| Commodity               | Year | Jan.  | Feb.   | Mar.   | Apr.   | May   | June  | July   | Aug.   | Sep.   | Oct.   | Nov.   | Dec.  | Season average | Prct change | Prct change |
|-------------------------|------|-------|--------|--------|--------|-------|-------|--------|--------|--------|--------|--------|-------|----------------|-------------|-------------|
|                         |      |       |        |        |        |       |       |        |        |        |        |        |       |                | July-July   | 2nd quarter |
| <i>Dollars per cwt</i>  |      |       |        |        |        |       |       |        |        |        |        |        |       |                | Percent     | Percent     |
| <b>Asparagus</b>        | 2004 | --    | 171.00 | 76.50  | 81.70  | 74.30 | 64.60 | 146.00 | 138.00 | 129.00 | 127.00 | --     | --    | 81.30          | --          | --          |
|                         | 2005 | --    | --     | 88.60  | 103.00 | 68.70 | 73.50 | 143.00 | 150.00 | 162.00 | 162.00 | --     | --    | 87.40          | -2.1        | 11.2        |
|                         | 2006 | --    | 122.00 | 133.00 | 110.00 | 72.70 | 94.10 | 105.00 | 162.00 | 122.00 | 127.00 | --     | --    | 88.90          | -26.6       | 12.9        |
|                         | 2007 | --    | --     | 107.00 | 106.00 | 91.90 | 87.70 | --     | --     | --     | --     | --     | --    | 99.10          | --          | 3.2         |
|                         | 2008 | --    | --     | 84.80  | 97.60  | 94.70 | 83.10 | 106.00 |        |        |        |        |       |                | --          | -3.6        |
| <b>Broccoli</b>         | 2004 | 33.60 | 28.50  | 21.60  | 24.00  | 27.20 | 28.70 | 24.20  | 29.70  | 57.00  | 43.90  | 43.70  | 38.50 | 33.20          | --          | --          |
|                         | 2005 | 22.60 | 33.30  | 42.60  | 39.80  | 22.40 | 39.70 | 22.40  | 30.50  | 27.70  | 22.40  | 20.40  | 34.10 | 28.50          | -7.4        | 27.5        |
|                         | 2006 | 32.50 | 23.80  | 27.60  | 32.40  | 29.00 | 51.10 | 26.20  | 56.90  | 39.40  | 24.60  | 27.40  | 52.80 | 33.70          | 17.0        | 10.4        |
|                         | 2007 | 69.80 | 25.40  | 27.60  | 36.90  | 26.70 | 24.80 | 28.80  | 38.20  | 41.80  | 61.00  | 38.10  | 40.70 | 36.70          | 9.9         | -21.4       |
|                         | 2008 | 47.30 | 22.90  | 30.60  | 52.20  | 26.70 | 29.60 | 26.50  |        |        |        |        |       |                | -8.0        | 22.7        |
| <b>Cantaloups</b>       | 2004 | --    | --     | --     | --     | 15.30 | 12.10 | 11.00  | 14.30  | 15.50  | 14.80  | 18.30  | 33.80 | 14.70          | --          | --          |
|                         | 2005 | --    | --     | --     | --     | 22.60 | 18.10 | 13.80  | 10.70  | 14.90  | 14.40  | 15.60  | --    | 15.90          | 25.5        | 48.5        |
|                         | 2006 | --    | --     | --     | --     | 29.20 | 18.40 | 16.00  | 20.70  | 10.40  | 16.10  | 28.20  | --    | 17.20          | 15.9        | 17.0        |
|                         | 2007 | --    | --     | --     | --     | 28.20 | 12.60 | 12.00  | 13.30  | 13.10  | 30.50  | 38.50  | --    | 14.80          | -25.0       | -14.3       |
|                         | 2008 | --    | --     | --     | --     | 25.90 | 17.90 | 17.50  |        |        |        |        |       |                | 45.8        | 7.4         |
| <b>Carrots</b>          | 2004 | 24.50 | 24.90  | 24.60  | 24.20  | 24.90 | 22.50 | 20.20  | 18.00  | 16.70  | 16.20  | 17.30  | 17.00 | 20.20          | --          | --          |
|                         | 2005 | 20.30 | 21.00  | 21.00  | 21.10  | 21.20 | 21.30 | 21.80  | 21.20  | 21.00  | 21.10  | 23.10  | 22.00 | 20.90          | 7.9         | -11.2       |
|                         | 2006 | 21.70 | 21.50  | 21.50  | 21.50  | 20.80 | 21.40 | 21.50  | 22.40  | 19.30  | 19.80  | 20.20  | 19.10 | 20.60          | -1.4        | 0.2         |
|                         | 2007 | 21.00 | 28.10  | 28.30  | 29.60  | 32.00 | 25.90 | 19.70  | 17.10  | 16.10  | 15.80  | 15.80  | 16.20 | 22.60          | -8.4        | 37.4        |
|                         | 2008 | 16.20 | 25.90  | 25.90  | 25.50  | 32.00 | 25.60 | 25.60  |        |        |        |        |       |                | 29.9        | -5.0        |
| <b>Cauliflower</b>      | 2004 | 27.20 | 42.20  | 24.20  | 23.50  | 28.80 | 46.20 | 27.50  | 26.00  | 31.00  | 32.20  | 27.10  | 40.90 | 30.80          | --          | --          |
|                         | 2005 | 27.60 | 38.00  | 50.60  | 36.70  | 29.70 | 38.10 | 25.60  | 31.50  | 28.50  | 19.70  | 23.60  | 44.30 | 30.30          | -6.9        | 6.1         |
|                         | 2006 | 33.10 | 24.90  | 35.60  | 44.40  | 27.10 | 27.90 | 24.00  | 28.40  | 47.10  | 20.90  | 34.50  | 41.70 | 32.30          | -6.3        | -4.9        |
|                         | 2007 | 45.70 | 29.40  | 51.40  | 51.60  | 24.90 | 30.00 | 22.30  | 27.90  | 27.20  | 46.20  | 26.60  | 52.40 | 34.30          | -7.1        | 7.1         |
|                         | 2008 | 53.40 | 30.20  | 41.70  | 63.60  | 24.90 | 53.90 | 38.50  |        |        |        |        |       |                | 72.6        | 33.7        |
| <b>Celery</b>           | 2004 | 20.80 | 24.40  | 13.90  | 15.60  | 15.00 | 13.80 | 11.60  | 9.25   | 11.20  | 14.60  | 18.10  | 13.40 | 14.80          | --          | --          |
|                         | 2005 | 12.90 | 22.90  | 28.40  | 20.80  | 15.50 | 9.62  | 9.69   | 9.82   | 12.00  | 11.70  | 13.10  | 10.70 | 13.90          | -16.5       | 3.4         |
|                         | 2006 | 9.64  | 10.80  | 14.90  | 16.60  | 12.70 | 17.80 | 21.00  | 23.20  | 27.70  | 27.00  | 22.00  | 20.20 | 18.20          | 116.7       | 2.6         |
|                         | 2007 | 33.90 | 58.90  | 31.90  | 18.80  | 18.30 | 11.60 | 11.60  | 9.64   | 13.80  | 13.30  | 18.60  | 13.50 | 20.40          | -44.8       | 3.4         |
|                         | 2008 | 16.20 | 13.20  | 13.40  | 14.00  | 18.30 | 30.10 | 25.80  |        |        |        |        |       |                | 122.4       | 28.1        |
| <b>Corn, sweet</b>      | 2004 | 30.30 | 20.90  | 20.30  | 17.20  | 15.60 | 12.50 | 16.60  | 20.90  | 21.30  | 27.50  | 29.30  | 18.10 | 19.30          | --          | --          |
|                         | 2005 | 21.30 | 28.60  | 26.10  | 21.50  | 18.00 | 22.50 | 22.30  | 20.40  | 24.70  | 25.50  | 25.70  | 22.40 | 22.10          | 34.3        | 36.9        |
|                         | 2006 | 35.00 | 35.00  | 34.00  | 27.10  | 15.40 | 21.50 | 21.00  | 21.70  | 25.10  | 21.10  | 20.70  | 20.80 | 22.90          | -5.8        | 3.2         |
|                         | 2007 | 27.40 | 23.70  | 30.20  | 25.60  | 21.40 | 17.30 | 22.20  | 22.80  | 23.20  | 21.40  | 20.60  | 34.10 | 22.20          | 5.7         | 0.5         |
|                         | 2008 | 30.80 | 23.00  | 28.60  | 21.00  | 22.60 | 19.20 | 28.40  |        |        |        |        |       |                | 27.9        | -2.3        |
| <b>Cucumbers</b>        | 2004 | 28.10 | 22.20  | 30.30  | 23.30  | 13.60 | 15.50 | 18.20  | 23.60  | 25.00  | 23.70  | 18.70  | --    | 20.20          | --          | --          |
|                         | 2005 | 20.20 | 17.20  | 32.60  | 29.30  | 30.70 | 28.70 | 15.70  | 21.10  | 20.10  | 23.10  | 32.60  | 53.10 | 23.00          | -13.7       | 69.3        |
|                         | 2006 | 23.90 | 27.70  | 40.70  | 29.40  | 21.30 | 24.30 | 26.80  | 27.20  | 22.50  | 18.50  | 29.60  | 27.00 | 25.30          | 70.7        | -15.4       |
|                         | 2007 | 30.80 | 35.30  | 33.60  | 21.40  | 28.50 | 23.20 | 18.90  | 24.60  | 29.10  | 25.00  | 22.00  | 18.50 | 24.40          | -29.5       | -2.5        |
|                         | 2008 | 38.40 | --     | 20.50  | 24.40  | 21.90 | 36.20 | 24.30  |        |        |        |        |       |                | 28.6        | 12.9        |
| <b>Head lettuce</b>     | 2004 | 16.00 | 19.70  | 10.50  | 14.80  | 10.50 | 13.30 | 10.70  | 17.10  | 15.20  | 24.10  | 14.10  | 13.60 | 16.90          | --          | --          |
|                         | 2005 | 11.50 | 11.70  | 27.80  | 30.10  | 13.90 | 17.30 | 11.00  | 13.50  | 12.70  | 12.40  | 9.81   | 16.10 | 15.50          | 2.8         | 58.8        |
|                         | 2006 | 10.60 | 12.10  | 19.10  | 22.40  | 33.70 | 11.80 | 12.20  | 20.70  | 16.30  | 11.80  | 12.50  | 22.20 | 16.90          | 10.9        | 10.8        |
|                         | 2007 | 20.80 | 15.50  | 29.70  | 17.80  | 13.60 | 17.80 | 17.30  | 23.10  | 29.20  | 44.40  | 17.40  | 16.00 | 22.00          | 41.8        | -27.5       |
|                         | 2008 | 17.50 | 13.30  | 14.80  | 21.70  | 13.60 | 17.70 | 16.80  |        |        |        |        |       |                | -2.9        | 7.7         |
| <b>Onions, dry bulb</b> | 2004 | 13.10 | 12.20  | 11.60  | 19.40  | 17.60 | 16.10 | 13.00  | 9.92   | 8.44   | 6.27   | 6.28   | 5.76  | 9.06           | --          | --          |
|                         | 2005 | 5.10  | 4.23   | 4.44   | 17.70  | 19.50 | 17.80 | 16.80  | 11.20  | 10.50  | 12.80  | 11.60  | 9.45  | 12.40          | 29.2        | 3.6         |
|                         | 2006 | 8.53  | 8.19   | 7.60   | 15.20  | 16.30 | 17.80 | 14.90  | 13.30  | 12.40  | 10.40  | 11.40  | 16.60 | 15.70          | -11.3       | -10.4       |
|                         | 2007 | 22.10 | 26.20  | 35.00  | 55.20  | 24.20 | 24.60 | 15.40  | 10.80  | 5.57   | 4.47   | 4.70   | 4.39  | 11.50          | 3.4         | 111.0       |
|                         | 2008 | 4.54  | 3.55   | 2.71   | 17.40  | 23.30 | 17.60 | 16.40  |        |        |        |        |       |                | 6.5         | -43.9       |
| <b>Snap beans</b>       | 2004 | 76.20 | 43.50  | 42.50  | 48.60  | 22.50 | 27.90 | 50.70  | 67.60  | 68.30  | 82.90  | 53.90  | 47.50 | 45.20          | --          | --          |
|                         | 2005 | 71.40 | 77.80  | 85.30  | 60.70  | 55.20 | 38.40 | 58.90  | 72.70  | 65.30  | 40.80  | 89.10  | 82.00 | 54.20          | 16.2        | 55.9        |
|                         | 2006 | 44.00 | 56.00  | 44.90  | 44.30  | 34.50 | 33.40 | 61.10  | 77.00  | 74.60  | 58.60  | 48.30  | 65.50 | 50.50          | 3.7         | -27.3       |
|                         | 2007 | 64.90 | 82.30  | 102.00 | 63.50  | 38.80 | 35.10 | 65.10  | 81.10  | 78.90  | 67.40  | 89.30  | 43.00 | 60.50          | 6.5         | 22.5        |
|                         | 2008 | 68.80 | 98.30  | 37.70  | 57.00  | 38.90 | 51.30 | 94.90  |        |        |        |        |       |                | 45.8        | 7.1         |
| <b>Tomatoes</b>         | 2004 | 24.70 | 32.30  | 41.00  | 44.20  | 32.20 | 21.10 | 22.50  | 35.80  | 37.30  | 70.80  | 119.00 | --    | 37.60          | --          | --          |
|                         | 2005 | 15.40 | 40.90  | 40.70  | 65.10  | 49.40 | 40.20 | 28.20  | 26.20  | 46.40  | 36.40  | 32.80  | 76.80 | 41.80          | 25.3        | 58.7        |
|                         | 2006 | 82.70 | 46.50  | 24.80  | 34.40  | 23.30 | 30.90 | 28.20  | 34.70  | 82.10  | 55.30  | 28.00  | 21.20 | 44.00          | 0.0         | -42.7       |
|                         | 2007 | 35.60 | 31.20  | 26.30  | 52.60  | 35.60 | 29.60 | 26.70  | 28.60  | 33.10  | 41.60  | 58.70  | 81.20 | 34.50          | -5.3        | 33.0        |
|                         | 2008 | 58.20 | 45.50  | 66.10  | 47.40  | 48.20 | 58.00 | 41.00  |        |        |        |        |       |                | 53.6        | 30.4        |

-- = Not available. 1/ 2008 prices are preliminary. One hundredweight (cwt) is equal to 100 pounds. The prices in this table can also be read as cents per pound. Prices beginning in 2006 are measured at the point of first sale. They are f.o.b. shipping point prices in prior years.

Source: USDA, National Agricultural Statistics Service, *Agricultural Prices*.

**Price table 3—Vegetables: Producer Price Indexes, by month, 1999-2008 1/**

| Item               | Year  | Jan.  | Feb.  | Mar.  | Apr.  | May   | June  | July  | Aug.  | Sep.  | Oct.  | Nov.  | Dec.  | Annual | Change                |
|--------------------|-------|-------|-------|-------|-------|-------|-------|-------|-------|-------|-------|-------|-------|--------|-----------------------|
|                    |       |       |       |       |       |       |       |       |       |       |       |       |       |        | July- July<br>Percent |
| -----1982=100----- |       |       |       |       |       |       |       |       |       |       |       |       |       |        |                       |
| Fresh 2/           | 1999  | 131.9 | 93.1  | 117.4 | 144.4 | 111.3 | 125.8 | 103.4 | 113.7 | 117.5 | 101.6 | 100.9 | 151.6 | 117.7  | --                    |
|                    | 2000  | 111.3 | 100.5 | 122.3 | 126.8 | 152.0 | 128.1 | 127.2 | 136.7 | 155.9 | 165.0 | 173.9 | 120.3 | 135.0  | 23.0                  |
|                    | 2001  | 147.0 | 168.6 | 178.7 | 145.6 | 144.9 | 129.4 | 109.7 | 127.2 | 132.3 | 112.3 | 105.9 | 121.0 | 135.2  | -13.8                 |
|                    | 2002  | 146.1 | 188.7 | 242.5 | 101.7 | 107.2 | 123.2 | 127.1 | 125.4 | 116.7 | 126.9 | 127.4 | 119.0 | 137.7  | 15.9                  |
|                    | 2003  | 147.8 | 127.5 | 153.0 | 167.7 | 165.0 | 138.8 | 133.3 | 136.6 | 164.7 | 156.9 | 148.4 | 184.7 | 152.0  | 4.9                   |
|                    | 2004  | 143.8 | 125.9 | 140.3 | 133.1 | 132.9 | 101.0 | 102.8 | 128.3 | 141.9 | 200.0 | 211.1 | 143.7 | 142.1  | -22.9                 |
|                    | 2005  | 122.0 | 152.8 | 168.5 | 174.7 | 144.2 | 160.0 | 126.8 | 132.3 | 153.3 | 144.0 | 163.1 | 200.8 | 153.5  | 23.3                  |
|                    | 2006  | 207.6 | 138.8 | 137.6 | 174.4 | 147.9 | 128.7 | 134.1 | 179.5 | 193.1 | 167.7 | 138.3 | 178.4 | 160.5  | 5.8                   |
|                    | 2007  | 175.3 | 190.3 | 222.4 | 222.5 | 142.1 | 145.4 | 146.0 | 137.8 | 162.7 | 218.3 | 177.4 | 204.5 | 178.7  | 8.9                   |
| 2008               | 200.2 | 158.3 | 194.1 | 182.9 | 170.7 | 191.7 | 168.3 |       |       |       |       |       |       | 15.3   |                       |
| Melons             | 1999  | --    | --    | --    | --    | 86.6  | 62.8  | 42.4  | 62.1  | --    | 63.4  | 59.1  | --    | 62.7   | --                    |
|                    | 2000  | --    | --    | --    | --    | 68.0  | 64.3  | 56.4  | 43.8  | 48.7  | 93.6  | 124.2 | --    | 71.3   | 33.0                  |
|                    | 2001  | --    | --    | --    | --    | 118.6 | 53.4  | 53.3  | 76.1  | 57.1  | 60.0  | 114.9 | --    | 76.2   | -5.5                  |
|                    | 2002  | --    | --    | --    | --    | --    | 74.7  | 80.5  | 58.7  | 60.1  | 66.2  | 55.3  | --    | 65.9   | 51.0                  |
|                    | 2003  | --    | --    | --    | --    | 120.5 | 60.6  | 60.1  | 35.8  | 49.0  | 64.9  | 106.8 | --    | 71.1   | -25.3                 |
|                    | 2004  | 106.8 | 141.3 | 157.3 | 90.2  | 95.4  | 75.1  | 56.1  | 66.6  | 76.6  | 108.8 | 114.4 | 150.6 | 103.3  | -6.7                  |
|                    | 2005  | 156.1 | 75.4  | 96.5  | 162.2 | 114.8 | 99.9  | 83.8  | 62.3  | 80.7  | 67.3  | --    | --    | 99.9   | 49.4                  |
|                    | 2006  | --    | --    | 99.8  | 99.8  | 95.6  | 93.8  | 70.3  | 80.2  | 75.0  | 76.2  | 105.1 | 154.7 | 95.1   | -16.1                 |
|                    | 2007  | 126.2 | 102.9 | 96.9  | 127.6 | 153.5 | 74.6  | 60.0  | 71.0  | 87.4  | 122.9 | 175.2 | 165.6 | 113.7  | -14.7                 |
| 2008               | 141.1 | 140.1 | 85.8  | 164.0 | 140.5 | 92.6  | 82.3  |       |       |       |       |       |       | 37.2   |                       |
| Canned 3/          | 1999  | 120.6 | 120.6 | 120.9 | 120.9 | 121.0 | 121.0 | 120.8 | 120.9 | 120.7 | 120.7 | 121.3 | 121.3 | 120.9  | --                    |
|                    | 2000  | 121.3 | 120.8 | 121.2 | 120.9 | 121.2 | 121.5 | 121.1 | 120.9 | 121.1 | 121.6 | 121.7 | 121.3 | 121.2  | 0.2                   |
|                    | 2001  | 121.4 | 121.4 | 121.3 | 121.3 | 121.4 | 121.9 | 124.1 | 124.9 | 125.3 | 126.5 | 128.0 | 128.1 | 123.8  | 2.5                   |
|                    | 2002  | 128.3 | 128.2 | 128.0 | 128.2 | 128.3 | 128.0 | 127.7 | 129.4 | 128.7 | 129.5 | 129.1 | 129.1 | 128.5  | 2.9                   |
|                    | 2003  | 128.8 | 129.0 | 128.9 | 129.3 | 129.4 | 129.3 | 129.4 | 129.1 | 130.0 | 130.7 | 131.1 | 131.3 | 129.7  | 1.3                   |
|                    | 2004  | 131.5 | 131.7 | 131.9 | 131.9 | 131.7 | 132.8 | 133.0 | 133.3 | 133.4 | 134.6 | 135.4 | 135.5 | 133.1  | 2.8                   |
|                    | 2005  | 135.7 | 135.9 | 136.1 | 136.3 | 137.6 | 137.6 | 137.7 | 137.7 | 137.5 | 137.7 | 137.6 | 138.0 | 137.1  | 3.5                   |
|                    | 2006  | 138.0 | 136.8 | 137.1 | 137.3 | 138.8 | 140.2 | 140.0 | 140.5 | 141.4 | 141.5 | 142.2 | 142.2 | 139.7  | 1.7                   |
|                    | 2007  | 142.8 | 142.9 | 143.1 | 143.3 | 143.5 | 143.6 | 143.1 | 143.1 | 144.0 | 143.9 | 144.2 | 144.6 | 143.5  | 2.2                   |
| 2008               | 147.8 | 148.4 | 149.6 | 150.8 | 151.2 | 152.5 | 153.6 |       |       |       |       |       |       | 7.3    |                       |
| Frozen             | 1999  | 125.8 | 126.6 | 125.6 | 126.7 | 125.9 | 126.0 | 126.8 | 126.1 | 126.0 | 126.4 | 125.5 | 125.3 | 126.1  | --                    |
|                    | 2000  | 125.4 | 126.2 | 125.7 | 126.3 | 126.3 | 124.9 | 125.9 | 126.4 | 126.2 | 126.9 | 126.1 | 126.2 | 126.0  | -0.7                  |
|                    | 2001  | 127.6 | 128.5 | 127.7 | 128.7 | 128.4 | 127.7 | 128.9 | 128.8 | 128.8 | 130.0 | 129.2 | 129.1 | 128.6  | 2.4                   |
|                    | 2002  | 130.0 | 131.1 | 130.1 | 131.2 | 130.7 | 129.7 | 131.4 | 131.3 | 131.5 | 132.2 | 131.9 | 132.6 | 131.1  | 1.9                   |
|                    | 2003  | 133.4 | 134.1 | 133.3 | 134.0 | 134.1 | 133.9 | 134.9 | 134.2 | 134.2 | 135.2 | 135.1 | 135.0 | 134.3  | 2.7                   |
|                    | 2004  | 135.1 | 136.0 | 135.3 | 135.3 | 134.3 | 134.7 | 135.4 | 135.8 | 136.8 | 138.1 | 137.2 | 137.0 | 135.9  | 0.4                   |
|                    | 2005  | 137.3 | 137.3 | 137.4 | 137.5 | 137.5 | 137.4 | 137.2 | 136.8 | 136.6 | 136.7 | 136.1 | 136.4 | 137.0  | 1.3                   |
|                    | 2006  | 137.3 | 137.7 | 138.7 | 138.6 | 138.8 | 139.5 | 139.4 | 139.3 | 139.9 | 142.0 | 142.7 | 142.6 | 139.7  | 1.6                   |
|                    | 2007  | 144.0 | 144.0 | 144.0 | 145.2 | 145.9 | 146.7 | 148.2 | 149.3 | 149.9 | 151.5 | 152.5 | 153.2 | 147.9  | 6.3                   |
| 2008               | 153.3 | 153.8 | 155.6 | 156.7 | 156.6 | 156.5 | 158.3 |       |       |       |       |       |       | 6.8    |                       |
| Dehydrated 4/      | 1999  | 148.0 | 148.0 | 148.4 | 147.7 | 146.1 | 146.1 | 146.0 | 146.5 | 147.1 | 146.7 | 147.4 | 151.1 | 147.4  | --                    |
|                    | 2000  | 148.9 | 149.8 | 149.9 | 149.5 | 149.3 | 149.0 | 148.6 | 144.9 | 144.0 | 144.9 | 143.4 | 140.8 | 146.9  | 1.8                   |
|                    | 2001  | 139.1 | 135.6 | 136.2 | 136.9 | 139.9 | 140.6 | 140.4 | 140.9 | 142.4 | 142.7 | 144.6 | 145.9 | 140.4  | -5.5                  |
|                    | 2002  | 148.2 | 149.3 | 150.3 | 151.0 | 150.1 | 151.2 | 152.6 | 152.3 | 151.2 | 151.1 | 150.2 | 151.1 | 150.7  | 8.7                   |
|                    | 2003  | 150.6 | 150.2 | 149.8 | 147.8 | 147.5 | 147.3 | 146.5 | 145.2 | 144.2 | 143.3 | 143.5 | 146.1 | 146.8  | -4.0                  |
|                    | 2004  | 145.4 | 145.1 | 144.5 | 144.4 | 144.2 | 144.2 | 144.3 | 144.1 | 145.7 | 144.8 | 143.9 | 144.5 | 144.6  | -1.5                  |
|                    | 2005  | 145.6 | 145.9 | 145.2 | 145.7 | 146.8 | 146.0 | 145.3 | 145.9 | 150.4 | 150.6 | 152.3 | 154.3 | 147.8  | 0.7                   |
|                    | 2006  | 154.7 | 156.4 | 158.1 | 159.3 | 163.0 | 165.0 | 165.1 | 165.5 | 168.1 | 168.5 | 169.8 | 171.9 | 163.8  | 13.6                  |
|                    | 2007  | 175.7 | 176.2 | 175.0 | 176.4 | 180.2 | 179.3 | 179.8 | 179.5 | 179.6 | 180.1 | 184.1 | 184.0 | 179.2  | 8.9                   |
| 2008               | 185.3 | 185.7 | 188.1 | 188.2 | 187.5 | 188.4 | 194.4 |       |       |       |       |       |       | 8.1    |                       |

-- = not available. 1/ Indexes for 2008 are preliminary. 2/ Excludes potatoes. 3/ Includes vegetable juices. 4/ Includes both fruits and vegetables.

Source: U.S. Department of Labor, Bureau of Labor Statistics (<http://www.bls.gov/data/home.htm>).

Price table 4—Vegetables: Consumer Price Indexes, by month, 2004-08 1/

| Item                                   | Year | Jan.  | Feb.  | Mar.  | Apr.  | May   | June  | July  | Aug.  | Sep.  | Oct.  | Nov.  | Dec.  | Annual |
|--|------|-------|-------|-------|-------|-------|-------|-------|-------|-------|-------|-------|-------|--------|
| ----- 1982-84=100 -----                |      |       |       |       |       |       |       |       |       |       |       |       |       |        |
| <b>Fresh vegetables 2/</b>             | 2004 | 265.2 | 262.8 | 261.3 | 251.7 | 251.0 | 247.2 | 244.6 | 245.6 | 248.4 | 270.7 | 291.0 | 295.1 | 261.2  |
|  | 2005 | 271.0 | 263.2 | 267.0 | 280.1 | 280.6 | 266.9 | 268.5 | 261.0 | 265.6 | 274.1 | 274.6 | 288.3 | 271.7  |
|  | 2006 | 300.6 | 289.7 | 279.7 | 276.8 | 275.6 | 272.9 | 271.5 | 274.4 | 294.2 | 301.8 | 288.6 | 286.1 | 284.3  |
|  | 2007 | 298.3 | 308.6 | 302.4 | 299.3 | 293.3 | 283.5 | 280.1 | 274.4 | 282.3 | 292.7 | 300.4 | 306.1 | 293.5  |
|  | 2008 | 317.5 | 305.0 | 301.5 | 299.8 | 298.5 | 307.2 | 313.8 |       |       |       |       |       |        |
| <b>Potatoes, fresh</b>                 | 2004 | 228.2 | 226.0 | 230.5 | 224.3 | 229.0 | 237.4 | 240.7 | 238.9 | 228.5 | 232.0 | 226.9 | 230.5 | 231.1  |
|  | 2005 | 237.5 | 235.8 | 228.3 | 235.0 | 239.1 | 246.7 | 256.7 | 263.8 | 258.6 | 265.8 | 253.5 | 251.7 | 247.7  |
|  | 2006 | 261.1 | 264.7 | 264.6 | 261.5 | 270.4 | 276.0 | 282.5 | 293.6 | 290.4 | 278.2 | 267.8 | 266.8 | 273.1  |
|  | 2007 | 272.4 | 269.9 | 276.0 | 277.6 | 284.7 | 291.6 | 294.5 | 283.4 | 283.0 | 278.8 | 278.7 | 274.7 | 280.4  |
|  | 2008 | 282.9 | 286.3 | 285.4 | 293.1 | 294.6 | 311.3 | 347.0 |       |       |       |       |       |        |
| <b>Lettuce, fresh</b>                  | 2004 | 271.7 | 245.8 | 242.3 | 232.1 | 224.1 | 221.7 | 219.8 | 228.4 | 229.2 | 236.2 | 249.0 | 276.9 | 239.8  |
|  | 2005 | 258.3 | 237.9 | 253.5 | 287.5 | 271.6 | 257.6 | 247.7 | 247.4 | 249.4 | 258.4 | 258.7 | 260.0 | 257.3  |
|  | 2006 | 260.8 | 258.0 | 254.2 | 267.2 | 285.5 | 264.0 | 246.9 | 265.8 | 274.2 | 269.7 | 265.1 | 281.9 | 266.1  |
|  | 2007 | 292.2 | 294.7 | 287.6 | 283.3 | 265.6 | 261.6 | 254.7 | 260.6 | 273.3 | 298.2 | 295.7 | 295.3 | 280.2  |
|  | 2008 | 292.9 | 282.6 | 278.3 | 277.0 | 268.3 | 269.6 | 276.6 |       |       |       |       |       |        |
| <b>Tomatoes, fresh</b>                 | 2004 | 283.2 | 282.8 | 285.0 | 274.4 | 272.3 | 252.9 | 243.5 | 249.5 | 253.8 | 316.3 | 422.7 | 425.0 | 296.8  |
|  | 2005 | 309.6 | 274.8 | 297.1 | 310.6 | 333.6 | 293.0 | 287.3 | 267.6 | 273.5 | 297.2 | 299.0 | 342.3 | 298.8  |
|  | 2006 | 393.1 | 354.7 | 311.5 | 297.9 | 293.9 | 276.1 | 271.8 | 271.8 | 336.5 | 405.5 | 347.8 | 318.5 | 323.3  |
|  | 2007 | 307.2 | 317.2 | 291.9 | 309.8 | 309.7 | 283.5 | 278.7 | 273.8 | 280.8 | 304.7 | 341.3 | 378.7 | 306.5  |
|  | 2008 | 385.2 | 329.6 | 345.1 | 334.9 | 322.1 | 346.3 | 330.7 |       |       |       |       |       |        |
| <b>Other, fresh</b>                    | 2004 | 276.2 | 279.0 | 274.2 | 263.7 | 263.0 | 259.8 | 257.1 | 255.3 | 263.5 | 282.8 | 283.5 | 282.5 | 270.1  |
|  | 2005 | 277.9 | 280.8 | 279.4 | 289.9 | 284.8 | 272.2 | 276.0 | 265.2 | 274.0 | 277.4 | 282.7 | 295.2 | 279.6  |
|  | 2006 | 298.2 | 289.6 | 285.8 | 282.4 | 273.5 | 278.2 | 279.1 | 276.1 | 291.5 | 288.1 | 286.8 | 288.0 | 284.8  |
|  | 2007 | 311.5 | 328.6 | 324.9 | 313.0 | 303.4 | 291.9 | 287.7 | 280.4 | 290.3 | 297.3 | 300.6 | 300.4 | 302.5  |
|  | 2008 | 318.2 | 313.8 | 303.3 | 301.2 | 304.8 | 307.9 | 312.0 |       |       |       |       |       |        |
| <b>Frozen vegetables</b>               | 2004 | 176.3 | 177.6 | 174.9 | 173.5 | 176.9 | 174.5 | 177.0 | 178.1 | 177.6 | 177.5 | 173.8 | 171.4 | 175.8  |
|  | 2005 | 177.0 | 176.3 | 174.7 | 177.2 | 178.6 | 176.5 | 180.2 | 177.7 | 181.5 | 179.1 | 176.8 | 177.5 | 177.8  |
|  | 2006 | 179.4 | 182.9 | 179.7 | 179.7 | 178.1 | 175.7 | 178.8 | 181.3 | 179.6 | 177.7 | 178.1 | 178.7 | 179.1  |
|  | 2007 | 179.0 | 182.1 | 180.4 | 178.2 | 181.2 | 178.6 | 182.6 | 182.5 | 183.4 | 181.1 | 180.2 | 179.8 | 180.8  |
|  | 2008 | 184.1 | 184.0 | 184.0 | 187.2 | 190.4 | 192.6 | 193.1 |       |       |       |       |       |        |
| <i>December 1997=100</i>               |      |       |       |       |       |       |       |       |       |       |       |       |       |        |
| <b>Processed fruits and vegetables</b> | 2004 | 115.1 | 115.4 | 115.4 | 114.2 | 115.9 | 115.3 | 116.6 | 117.2 | 115.6 | 116.2 | 115.0 | 114.2 | 115.5  |
|  | 2005 | 117.9 | 117.1 | 116.3 | 118.8 | 119.3 | 119.7 | 121.3 | 120.6 | 121.2 | 120.6 | 118.8 | 120.3 | 119.3  |
|  | 2006 | 121.8 | 122.5 | 122.4 | 121.3 | 122.6 | 122.8 | 123.8 | 124.1 | 123.3 | 122.8 | 122.7 | 123.5 | 122.8  |
|  | 2007 | 124.9 | 125.5 | 125.4 | 124.9 | 126.2 | 127.7 | 129.0 | 129.2 | 129.6 | 129.3 | 126.7 | 128.5 | 127.2  |
|  | 2008 | 130.8 | 132.9 | 131.5 | 134.7 | 136.8 | 138.7 | 140.5 |       |       |       |       |       |        |
| <b>Canned vegetables</b>               | 2004 | 116.1 | 116.0 | 115.7 | 115.8 | 118.0 | 116.9 | 118.3 | 119.7 | 117.0 | 117.7 | 115.9 | 116.5 | 117.0  |
|  | 2005 | 119.3 | 117.5 | 117.9 | 120.5 | 121.0 | 121.0 | 125.6 | 125.5 | 124.8 | 126.0 | 121.9 | 124.4 | 122.1  |
|  | 2006 | 124.8 | 125.0 | 126.6 | 124.1 | 126.0 | 126.5 | 128.1 | 127.9 | 125.3 | 124.7 | 125.5 | 125.9 | 125.9  |
|  | 2007 | 127.1 | 127.0 | 127.6 | 126.2 | 126.7 | 130.5 | 131.2 | 131.7 | 133.2 | 132.8 | 128.4 | 131.9 | 129.5  |
|  | 2008 | 133.1 | 136.9 | 134.9 | 141.2 | 142.1 | 144.5 | 148.1 |       |       |       |       |       |        |
| <b>Dried beans, peas, lentils</b>      | 2004 | 108.6 | 109.9 | 110.6 | 110.0 | 109.4 | 110.2 | 110.1 | 110.7 | 108.3 | 111.2 | 111.9 | 113.8 | 110.4  |
|  | 2005 | 115.2 | 116.0 | 116.4 | 118.4 | 117.5 | 118.3 | 118.3 | 118.1 | 118.3 | 118.7 | 118.9 | 116.6 | 117.6  |
|  | 2006 | 117.2 | 117.3 | 117.1 | 119.4 | 118.7 | 119.3 | 120.7 | 121.3 | 120.8 | 120.5 | 121.0 | 123.6 | 119.7  |
|  | 2007 | 126.1 | 124.5 | 126.8 | 129.3 | 131.6 | 133.0 | 134.6 | 135.3 | 136.3 | 136.3 | 136.9 | 139.0 | 132.5  |
|  | 2008 | 141.3 | 145.5 | 141.1 | 147.2 | 151.8 | 160.0 | 162.6 |       |       |       |       |       |        |
| <b>Olives, pickles and relishes</b>    | 2004 | 107.7 | 105.7 | 111.1 | 105.3 | 102.1 | 98.0  | 101.2 | 102.9 | 107.9 | 112.1 | 111.0 | 109.7 | 106.2  |
|  | 2005 | 110.0 | 107.5 | 115.2 | 112.0 | 101.1 | 98.4  | 100.4 | 108.8 | 106.7 | 119.5 | 109.1 | 110.2 | 108.2  |
|  | 2006 | 115.7 | 110.7 | 111.0 | 110.9 | 108.6 | 110.9 | 110.3 | 117.6 | 117.5 | 118.6 | 112.2 | 112.6 | 113.1  |
|  | 2007 | 118.4 | 120.8 | 118.1 | 117.7 | 121.2 | 120.9 | 121.2 | 115.8 | 129.9 | 125.8 | 123.1 | 117.2 | 120.8  |
|  | 2008 | 123.8 | 125.9 | 123.1 | 121.9 | 127.1 | 124.7 | 126.0 |       |       |       |       |       |        |

1/ Not seasonally adjusted. 2/ Includes potatoes.

Source: U.S. Department of Labor, Bureau of Labor Statistics (<http://www.bls.gov/data/home.htm>).

Price table 5—Fresh-market vegetables: U.S. average retail prices, by month, 2000-08

| Item                         | Year | Jan.  | Feb.  | Mar.  | Apr.  | May   | June  | July  | Aug.  | Sep.  | Oct.  | Nov.  | Dec.  | Annual | Change             |
|------------------------------|------|-------|-------|-------|-------|-------|-------|-------|-------|-------|-------|-------|-------|--------|--------------------|
|                              |      |       |       |       |       |       |       |       |       |       |       |       |       |        | July - July        |
|                              |      |       |       |       |       |       |       |       |       |       |       |       |       |        | Percent            |
|                              |      |       |       |       |       |       |       |       |       |       |       |       |       |        | <i>Cents/pound</i> |
| <b>Potatoes, white</b>       | 2000 | 39.2  | 40.1  | 39.3  | 38.8  | 37.9  | 37.6  | 39.0  | 40.0  | 37.4  | 36.7  | 35.1  | 34.7  | 38.0   | --                 |
|                              | 2001 | 35.5  | 34.8  | 35.6  | 36.2  | 36.3  | 38.8  | 40.9  | 43.9  | 42.2  | 41.8  | 41.0  | 41.0  | 39.0   | 4.9                |
|                              | 2002 | 42.6  | 44.7  | 46.5  | 49.3  | 50.8  | 51.7  | 54.9  | 55.9  | 51.1  | 49.2  | 47.3  | 47.9  | 49.3   | 34.2               |
|                              | 2003 | 48.3  | 47.2  | 46.3  | 46.6  | 46.6  | 46.2  | 46.4  | 46.4  | 44.4  | 44.1  | 43.8  | 43.9  | 45.9   | -15.5              |
|                              | 2004 | 45.7  | 44.6  | 45.9  | 46.1  | 43.5  | 46.2  | 47.1  | 46.4  | 44.6  | 45.0  | 44.3  | 44.9  | 45.4   | 1.5                |
|                              | 2005 | 45.8  | 44.8  | 44.0  | 45.0  | 45.2  | 45.5  | 47.7  | 49.1  | 48.2  | 50.5  | 49.9  | 49.8  | 47.1   | 1.3                |
|                              | 2006 | 50.4  | 51.7  | 51.7  | 52.2  | 53.3  | 54.1  | 55.6  | 57.2  | 56.3  | 54.5  | 51.7  | 51.7  | 53.4   | 16.6               |
|                              | 2007 | 51.7  | 51.4  | 51.8  | 52.9  | 53.0  | 53.8  | 54.5  | 52.2  | 52.0  | 51.7  | 52.7  | 52.0  | 52.5   | -2.0               |
|                              | 2008 | 52.5  | 53.1  | 54.2  | 54.6  | 56.2  | 59.8  | 67.2  |       |       |       |       |       |        | 23.3               |
| <b>Broccoli</b>              | 2000 | 118.2 | 98.9  | 106.9 | 101.3 | 117.4 | 123.6 | 113.9 | 112.0 | 105.2 | 108.0 | 108.5 | 151.8 | 113.8  | --                 |
|                              | 2001 | 98.7  | 97.8  | 108.3 | 95.4  | 99.9  | 100.5 | 98.1  | 97.8  | 96.9  | 101.1 | 89.7  | 97.3  | 98.5   | -13.9              |
|                              | 2002 | 137.4 | 168.1 | 114.7 | 120.4 | 103.6 | 109.3 | 111.9 | 113.5 | 124.7 | 107.3 | 116.5 | 105.2 | 119.4  | 14.1               |
|                              | 2003 | 112.2 | 110.1 | 119.9 | 113.9 | 115.1 | 112.7 | 113.3 | 109.3 | 130.3 | 135.8 | 131.2 | 135.6 | 120.0  | 1.3                |
|                              | 2004 | 131.9 | 121.6 | 112.5 | 102.2 | 110.7 | 106.0 | 106.9 | 106.7 | 120.8 | 139.9 | 133.5 | 141.4 | 119.5  | -5.6               |
|                              | 2005 | 123.5 | 134.6 | 131.8 | 148.9 | 129.9 | 130.7 | 144.2 | 132.0 | 135.2 | 119.6 | 128.8 | 122.9 | 131.8  | 34.9               |
|                              | 2006 | 135.5 | 149.3 | 135.8 | 136.7 | 137.3 | 143.2 | 151.1 | 152.1 | 168.9 | 140.9 | 138.9 | 146.0 | 144.6  | 4.8                |
|                              | 2007 | 182.8 | 172.0 | 145.8 | 154.1 | 141.2 | 137.3 | 147.5 | 154.2 | 153.6 | 174.9 | 174.1 | 165.5 | 158.6  | -2.4               |
|                              | 2008 | 173.3 | 163.9 | 157.4 | 173.7 | 165.2 | 160.0 | 167.0 |       |       |       |       |       |        | 13.2               |
| <b>Lettuce, iceberg</b>      | 2000 | 74.8  | 65.0  | 67.1  | 65.0  | 80.3  | 68.6  | 65.6  | 67.3  | 89.7  | 77.2  | 77.4  | 85.1  | 73.6   | --                 |
|                              | 2001 | 73.6  | 84.7  | 89.5  | 76.7  | 87.0  | 72.2  | 66.3  | 78.4  | 89.7  | 81.1  | 73.4  | 78.8  | 79.3   | 1.1                |
|                              | 2002 | 100.3 | 106.1 | 154.2 | 114.7 | 72.0  | 67.5  | 67.4  | 68.9  | 70.2  | 68.7  | 75.4  | 68.0  | 86.1   | 1.7                |
|                              | 2003 | 73.4  | 68.2  | 65.5  | 72.3  | 79.5  | 83.2  | 80.8  | 70.9  | 89.8  | 85.8  | 92.7  | 125.5 | 82.3   | 19.9               |
|                              | 2004 | 87.6  | 80.5  | 81.3  | 80.1  | 71.0  | 75.1  | 73.7  | 80.8  | 77.1  | 83.0  | 84.9  | 82.3  | 79.8   | -8.8               |
|                              | 2005 | 81.7  | 73.0  | 82.9  | 100.4 | 92.6  | 89.5  | 88.5  | 85.5  | 84.8  | 92.6  | 87.3  | 85.4  | 87.0   | 20.1               |
|                              | 2006 | 87.4  | 79.4  | 81.5  | 86.9  | 96.7  | 84.8  | 78.3  | 86.4  | 95.3  | 87.3  | 85.0  | 89.6  | 86.6   | -11.5              |
|                              | 2007 | 92.6  | 92.0  | 91.5  | 98.6  | 87.9  | 85.6  | 84.9  | 87.9  | 92.7  | 106.6 | 98.8  | 94.9  | 92.8   | 8.4                |
|                              | 2008 | 95.0  | 89.5  | 87.3  | 90.2  | 86.8  | 86.0  | 87.5  |       |       |       |       |       |        | 3.1                |
| <b>Tomatoes, field grown</b> | 2000 | 144.3 | 128.6 | 136.4 | 148.7 | 136.6 | 131.8 | 128.2 | 126.2 | 131.9 | 138.7 | 150.3 | 156.7 | 138.2  | --                 |
|                              | 2001 | 141.4 | 131.3 | 133.6 | 143.3 | 124.3 | 135.6 | 125.7 | 118.5 | 116.8 | 126.7 | 146.8 | 140.4 | 132.0  | -2.0               |
|                              | 2002 | 145.1 | 129.8 | 129.2 | 131.9 | 133.2 | 129.9 | 124.3 | 118.1 | 115.8 | 123.6 | 143.0 | 165.5 | 132.5  | -1.1               |
|                              | 2003 | 171.1 | 156.5 | 161.9 | 155.5 | 140.1 | 139.8 | 146.0 | 151.3 | 143.8 | 143.6 | 148.0 | 153.3 | 150.9  | 17.5               |
|                              | 2004 | 147.2 | 151.0 | 152.9 | 151.9 | 151.0 | 133.1 | 125.3 | 131.2 | 132.1 | 171.5 | 233.7 | 246.7 | 160.6  | -14.2              |
|                              | 2005 | 166.0 | 142.8 | 154.8 | 171.0 | 191.1 | 165.5 | 160.7 | 141.6 | 142.9 | 154.7 | 157.4 | 184.8 | 161.1  | 28.3               |
|                              | 2006 | 216.2 | 191.0 | 164.9 | 157.3 | 154.3 | 145.7 | 147.9 | 148.8 | 190.8 | 218.8 | 178.4 | 163.9 | 173.2  | -8.0               |
|                              | 2007 | 162.1 | 164.4 | 155.5 | 163.0 | 168.5 | 151.0 | 148.6 | 148.5 | 149.6 | 164.9 | 185.1 | 214.7 | 164.7  | 0.5                |
|                              | 2008 | 203.2 | 173.5 | 183.5 | 177.3 | 167.5 | 181.4 | 171.3 |       |       |       |       |       |        | 15.3               |
| <b>Lettuce, romaine 1/</b>   | 2006 | 134.1 | 140.5 | 138.3 | 147.6 | 147.6 | 132.0 | 123.7 | 135.9 | 143.0 | 141.0 | 142.9 | 145.5 | 139.3  | --                 |
|                              | 2007 | 161.2 | 181.7 | 163.1 | 154.5 | 150.4 | 142.5 | 134.4 | 137.3 | 149.4 | 157.1 | 175.7 | 177.5 | 157.1  | 8.6                |
|                              | 2008 | 172.4 | 168.2 | 158.7 | 155.7 | 158.1 | 159.0 | 160.9 |       |       |       |       |       |        | 19.7               |
| <b>Peppers, sweet 2/</b>     | 2005 | --    | --    | --    | --    | --    | --    | --    | --    | --    | 192.7 | --    | --    | --     | --                 |
|                              | 2006 | --    | --    | --    | --    | 163.8 | 169.5 | 176.8 | 171.3 | 171.0 | 208.0 | 195.5 | 189.0 | 180.6  | --                 |
|                              | 2007 | 190.5 | 211.9 | 218.2 | 235.2 | 222.6 | 221.9 | 195.3 | 181.6 | 188.7 | 208.0 | 219.8 | 218.7 | 209.4  | 10.5               |
|                              | 2008 | 216.6 | 233.0 | 271.0 | 234.6 | 239.5 | 242.7 | 262.9 |       |       |       |       |       |        | 34.6               |
| <b>Cabbage 2/</b>            | 2006 | --    | --    | --    | --    | --    | --    | --    | 56.1  | 60.0  | 58.5  | 59.5  | 60.6  | 58.9   | --                 |
|                              | 2007 | 61.0  | 66.5  | 68.9  | 65.1  | 61.0  | 58.1  | 58.6  | 57.1  | 56.8  | 62.6  | 60.6  | 61.3  | 61.5   | --                 |
|                              | 2008 | 62.6  | 58.3  | 58.7  | 59.5  | 62.5  | 66.9  | 70.8  |       |       |       |       |       |        | 20.8               |
| <b>Celery 2/</b>             | 2007 | --    | 128.3 | --    | 92.1  | --    | 82.9  | --    | 75.1  | 78.0  | --    | --    | --    | 91.3   | --                 |
|                              | 2008 | --    | --    | --    | --    | --    | --    | --    |       |       |       |       |       |        | --                 |
| <b>Carrots 2/</b>            | 2007 | --    | --    | --    | --    | --    | 80.5  | 77.8  | 77.6  | 78.2  | --    | 75.3  | 75.0  | 77.4   | --                 |
|                              | 2008 | 78.0  | 77.7  | 76.8  | 76.8  | 79.3  | 86.8  | 80.1  |       |       |       |       |       |        | 3.0                |

-- = not available. 1/ Romaine data was first reported by BLS in January 2006. 2/ Reported by BLS as statistically valid data are available.

Source: U.S. Department of Labor, Bureau of Labor Statistics (<http://www.bls.gov/data/home.htm>).

**Price table 6—Representative wholesale prices for selected fresh-market vegetables and melons in Chicago, 2007-08**

| Commodity                           | Shipping point 1/ | Shipping container       | 2007   |        |        |        |        |        |        |        | 2008   |        |        |       |        |        |       |
|-------------------------------------|-------------------|--------------------------|--------|--------|--------|--------|--------|--------|--------|--------|--------|--------|--------|-------|--------|--------|-------|
|                                     |                   |                          | June 1 | July 2 | Aug. 1 | Sep. 3 | Oct. 1 | Nov. 1 | Dec. 1 | Jan. 3 | Feb. 1 | Mar. 3 | Apr. 1 | May 1 | June 1 | July 1 | Aug 1 |
| Artichokes                          | CA                | Carton, 24s              | 16.50  | 28.75  | 21.50  | 31.00  | 30.00  | 33.00  | 41.00  | 48.00  | 32.00  | 36.00  | 23.00  | 18.50 | 12.00  | 35.50  | 22.00 |
| Beans, round green, machine-pick    | FL, GA, MI        | Bushel cartons           | 12.50  | 14.50  | 12.00  | 29.00  | 29.00  | 27.50  | 23.00  | 18.50  | 37.00  | 15.50  | 11.50  | 11.00 | 13.50  | 44.00  | 49.85 |
| Beets, medium                       | TX, IL, CA        | 25 lb sacks/filmbags     | 11.50  | 11.50  | 9.50   | 9.00   | 7.00   | 7.00   | 7.50   | 6.75   | 7.25   | 7.00   | 7.50   | 8.25  | 11.00  | 9.50   | 11.50 |
| Bok choy, baby                      | CA, FL            | 30 lb cartons            | 11.25  | 13.50  | 12.00  | 12.00  | 20.00  | 13.00  | 12.50  | 13.00  | 13.00  | 18.00  | 16.00  | 13.00 | 18.00  | 18.00  | 19.00 |
| Brussels sprouts                    | CA, MX            | 25 lb cartons            | 44.00  | --     | 36.00  | 19.00  | 33.00  | 20.00  | 21.50  | 27.50  | 24.00  | 32.00  | 31.00  | 46.00 | 25.00  | 27.50  | 21.50 |
| Cabbage, round-green, medium        | NY, GA            | 50 lb cartons            | 10.50  | 10.00  | 9.50   | 9.25   | 12.00  | 11.25  | 11.50  | 9.00   | 9.50   | 9.50   | 10.75  | 12.25 | 10.75  | 17.00  | 15.00 |
| Chinese cabbage (Napa)              | CA                | 30 lb cartons            | 11.25  | 13.50  | 11.00  | 13.00  | 22.50  | 14.00  | 14.00  | 13.00  | 15.00  | 12.00  | 20.00  | 20.00 | 15.00  | 15.00  | 18.00 |
| Carrots, baby peeled                | CA                | Carton, 24-1 lb filmbag  | 16.75  | 17.50  | 17.00  | 17.00  | 17.00  | 17.00  | 17.00  | 17.00  | 17.00  | 17.00  | 17.00  | 17.50 | 17.50  | 18.00  | 18.00 |
| Eggplant, medium                    | FL, GA, MX        | 1 1/9 bushel cartons     | 12.50  | 10.00  | 7.00   | 12.50  | 13.00  | 13.00  | 16.50  | 10.50  | 15.00  | 17.00  | 17.00  | 23.00 | 13.00  | 12.25  | 12.00 |
| Garlic, white colossal              | CA, MX            | 30 lb cartons            | 40.50  | 40.00  | 40.00  | 39.00  | 36.50  | 41.50  | 41.50  | 41.50  | 41.50  | 41.50  | 41.50  | 41.50 | 41.50  | 41.50  | 41.50 |
| Greens, kale                        | CA                | Carton, 24s              | 12.75  | 11.50  | 11.50  | 11.50  | 11.50  | 11.50  | 9.00   | 12.50  | 13.50  | 13.50  | 11.50  | 13.50 | 15.00  | 15.00  | 13.50 |
| Greens, kohlrabi                    | CA, TX, IL        | Carton, 12s/24s          | 21.00  | 21.00  | 21.00  | 22.00  | 22.00  | 22.00  | 20.50  | 20.50  | 24.00  | 20.50  | 20.00  | 20.50 | 20.50  | 24.00  | 27.00 |
| Greens, turnip tops                 | GA, IL            | Carton, 24s              | 10.25  | 9.75   | 9.50   | 11.50  | 13.75  | 10.00  | 10.50  | 10.00  | 11.50  | 10.50  | 11.50  | 10.75 | 12.50  | 11.50  | 11.50 |
| Greens, mustard                     | CA                | Carton, 24s              | 10.25  | 9.75   | 9.50   | 11.50  | 14.00  | 10.50  | 10.50  | 10.00  | 11.50  | 10.50  | 11.50  | 10.75 | 12.50  | 11.50  | 11.50 |
| Greens, collards                    | GA, CA            | Carton, 24s              | 10.25  | 9.75   | 9.50   | 11.50  | 13.50  | 10.00  | 11.00  | 10.00  | 11.50  | 10.50  | 11.50  | 10.75 | 12.50  | 11.50  | 11.50 |
| Leeks                               | CA, IL, MX        | Carton, bunched 12s      | 13.50  | 15.50  | 15.25  | 13.00  | 18.00  | 29.00  | 39.50  | 29.50  | 22.50  | 25.00  | 20.50  | 28.00 | 20.50  | 20.00  | 19.50 |
| Lettuce, Boston                     | CA                | Carton, 24s              | 13.00  | 9.50   | 11.00  | 17.00  | 16.00  | 13.00  | 14.50  | 14.50  | 13.00  | 12.50  | 13.00  | 15.50 | 15.00  | 14.00  | 14.00 |
| Lettuce, Romaine                    | CA                | Carton, 24s              | 10.50  | 11.50  | 11.50  | 17.00  | 17.00  | 17.50  | 12.00  | 15.00  | 14.00  | 14.50  | 12.00  | 14.50 | 13.00  | 16.00  | 15.00 |
| Mushrooms, button, large            | PA                | 10 lb carton             | 15.00  | 15.00  | 15.00  | 15.00  | 15.00  | 15.00  | 15.00  | 15.00  | 15.00  | 15.00  | 15.00  | 15.00 | 15.00  | 15.00  | 15.00 |
| Mushrooms, shiitake                 | PA                | 5 lb carton              | 21.00  | 21.00  | 21.00  | 21.00  | 21.00  | 21.00  | 21.00  | 21.00  | 21.00  | 21.00  | 21.00  | 21.00 | 21.00  | 21.00  | 21.00 |
| Mushrooms, oyster                   | PA                | 5 lb carton              | 15.50  | 15.50  | 15.50  | 15.50  | 15.50  | 15.50  | 15.50  | 15.50  | 15.50  | 15.50  | 15.50  | 15.50 | 15.50  | 15.50  | 15.50 |
| Mushrooms, cremini, medium          | PA                | 10 lb carton             | 12.75  | 12.75  | 12.75  | 12.50  | 12.50  | 12.50  | 12.50  | 12.50  | 12.50  | 12.50  | 12.50  | 12.50 | 12.50  | 12.50  | 12.50 |
| Mushrooms, portobellas, lrg         | PA                | 5 lb carton              | 10.00  | 10.00  | 10.00  | 10.00  | 10.00  | 10.00  | 10.00  | 10.00  | 10.00  | 10.00  | 10.00  | 10.00 | 10.00  | 10.00  | 10.00 |
| Okra, small-medium                  | FL, MX, TN        | 1/2 bushel carton        | 16.50  | 11.00  | 9.50   | 12.00  | 17.00  | 17.00  | 28.00  | 25.00  | 29.00  | 25.00  | 26.25  | 21.00 | 13.00  | 22.00  | 22.00 |
| Onions, green                       | CA, MX            | Carton, bunched 48s      | 16.50  | 12.25  | 12.50  | 13.50  | 12.50  | 17.00  | 20.50  | 17.50  | 24.50  | 13.75  | 11.50  | 12.50 | 12.50  | 16.00  | 27.05 |
| Parsley, curly                      | CA                | Cartons, bunched 60s     | 14.00  | 13.50  | 13.00  | 13.50  | 14.00  | 17.00  | 17.00  | 16.00  | 24.00  | 14.75  | 13.50  | 15.50 | 19.00  | 24.00  | 19.00 |
| Peas, snow                          | CA, GU            | 10 lb carton             | 7.00   | 18.00  | 15.00  | 15.00  | 21.00  | 16.00  | 16.00  | 20.50  | 9.00   | 21.00  | 17.00  | 15.50 | 30.00  | 28.00  | 22.50 |
| Peas, sugar snap                    | CA, GU            | 10 lb carton             | 15.00  | 20.00  | 15.00  | 17.00  | 18.00  | 16.00  | 36.50  | 21.50  | 11.00  | 14.50  | 16.00  | 15.00 | 22.00  | 30.00  | 33.00 |
| Peppers, green bell, large          | FL, CA            | 1 1/9 bushel carton      | 19.00  | 11.00  | 9.50   | 12.50  | 13.50  | 17.00  | 14.50  | 10.00  | 24.50  | 15.50  | 12.50  | 24.00 | 16.00  | 21.00  | 34.50 |
| Peppers, jalapeno, medium           | FL, GA, MI        | 1/2 & 5/9 bushel crates  | 25.00  | 9.50   | 9.75   | 8.00   | 16.00  | 9.50   | 20.00  | 9.50   | 17.50  | 9.50   | 9.50   | 22.50 | 9.50   | 13.00  | 18.50 |
| Radishes                            | FL, MI            | Carton, 30-6oz filmbag   | 9.00   | 10.00  | 8.25   | 10.00  | 10.00  | 9.00   | 9.00   | 10.00  | 9.00   | 8.75   | 8.75   | 8.75  | 9.00   | 9.00   | 11.00 |
| Spinach, flat                       | CA                | Cartons, bunched 24s     | 11.50  | 12.50  | 13.00  | 21.00  | 15.50  | 16.00  | 16.25  | 21.00  | 19.00  | 12.50  | 13.00  | 15.50 | 13.00  | 13.50  | 19.00 |
| Squash, zucchini, medium            | FL, NJ, MI        | 1/2 & 5/9 bushel crates  | 6.75   | 9.00   | 5.75   | 14.00  | 13.50  | 8.00   | 15.00  | 25.00  | 13.00  | 10.00  | 9.50   | 10.50 | 10.00  | 9.50   | 12.00 |
| Squash, yellow straightneck, med.   | FL, NJ, MI        | 1/2 & 5/9 bushel crates  | 7.00   | 9.00   | 6.75   | 17.00  | 12.00  | 9.00   | 10.50  | 19.00  | 13.00  | 17.00  | 13.00  | 15.00 | 10.25  | 9.50   | 15.00 |
| Sweet potatoes, US #1, Beauregrd    | LA                | 40 lb carton             | 22.00  | 21.50  | 22.50  | 23.50  | 23.50  | 23.00  | 21.50  | 21.00  | 21.00  | 21.00  | 20.00  | 20.50 | 20.00  | 20.00  | 20.00 |
| Tomatoes, mature green, lrg, 6x6    | FL, CA, MX        | 25 lb carton             | 9.00   | 9.50   | 7.50   | 13.00  | 13.00  | 15.75  | 20.00  | 18.00  | 12.00  | 24.50  | 15.00  | 11.00 | 20.50  | 13.00  | 12.50 |
| Tomatoes, vine ripe, md/lrg         | MX, CA, FL        | 25 lb carton             | 10.75  | 13.00  | 5.50   | 11.00  | 11.00  | 16.25  | 21.00  | 24.50  | 14.50  | 15.00  | 15.50  | 15.00 | 24.00  | 12.00  | 16.00 |
| Tomatoes, greenhse, v. ripe, md/lrg | CD, NL, MX        | 5 kg carton (on vine)    | 12.50  | 7.25   | 9.00   | 9.00   | 12.50  | 10.50  | 17.50  | 11.00  | 29.00  | 15.00  | 11.50  | 11.50 | 14.00  | 15.00  | 13.00 |
| Tomatoes, cherry                    | FL, CA, MX        | Flats, 12 1-pint buckets | 14.50  | 9.50   | 7.00   | 9.00   | 13.00  | 13.00  | 11.50  | 11.00  | 11.00  | 10.50  | 20.00  | 11.00 | 14.50  | 20.50  | 11.00 |
| Tomatoes, plum-type, med/lrg        | FL, CA, MX        | 25 lb carton             | 5.00   | 11.50  | 11.50  | 16.00  | 24.00  | 19.00  | 20.00  | 19.00  | 11.75  | 19.00  | 14.50  | 13.00 | 14.00  | 20.50  | 16.50 |
| Turnips, purple top, medium-large   | CA, IL            | 25 lb filmbags           | 15.00  | 14.00  | 9.50   | 7.75   | 7.75   | 7.75   | 8.00   | 8.00   | 8.00   | 9.00   | 10.00  | 8.00  | 10.00  | 10.00  | 10.00 |
| Cantaloups                          | CA, CR, MX        | 1/2-2/3 carton 15s       | 15.00  | 10.00  | 12.50  | 12.00  | 11.50  | 24.50  | 24.50  | 13.00  | 19.00  | 10.50  | 8.00   | 19.00 | 11.00  | 12.00  | 11.50 |
| Honeydews                           | CA, HD, CR        | 2/3 cartons 6s           | 9.00   | 9.25   | 10.50  | 10.25  | 10.50  | 16.50  | 10.50  | 11.50  | 14.00  | 15.75  | 11.50  | 13.50 | 10.00  | 14.00  | 11.00 |
| Watermelon, various red (85 lb ctn) | CA, TX, MX        | Carton 3s or 4s, per lb  | 0.36   | 0.29   | 0.18   | 0.18   | 0.29   | 0.32   | 0.34   | 0.34   | 0.40   | 0.19   | 0.21   | 0.29  | 0.27   | 0.27   | 0.25  |
| Watermelon, red seedless            | CA, MX            | Carton 4s or 5s, per lb  | 0.39   | 0.23   | 0.17   | 0.19   | 0.38   | 0.39   | 0.37   | 0.40   | 0.36   | 0.30   | 0.37   | 0.38  | 0.36   | 0.28   | 0.25  |

-- = Not available. 1/ Major shipping points by commodity into the Chicago Wholesale Market. CA=California, FL=Florida, TX=Texas, MI=Michigan, IL=Illinois, NY=New York, NJ= New Jersey, GA=Georgia, PA=Pennsylvania, LA = Louisiana, MX=Mexico, CR=Costa Rica, HD=Honduras, GU=Guatemala, CD=Canada, NL=Netherlands.

Source: USDA, Agricultural Marketing Service, *Fruit & Vegetable Market News*, FV Market News Portal, <http://marketnews.usda.gov/portal/fv>



**Price table 7—Canned vegetables: Quarterly wholesale price trends, 2000-08 1/**

| Year & quarter           | Sweet corn 2/ |       | Snap beans 3/ |       | Green peas 4/ |       | Carrots 5/ |       | Beets 6/ |       | Tomato paste 7/ |         |
|--------------------------|---------------|-------|---------------|-------|---------------|-------|------------|-------|----------|-------|-----------------|---------|
|                          | 24/300        | 6/10  | 24/300        | 6/10  | 24/300        | 6/10  | 24/300     | 6/10  | 24/300   | 6/10  | 55-drum         | 6/10    |
| ----- Dollars/case ----- |               |       |               |       |               |       |            |       |          |       | \$/lb           | \$/case |
| <b>2000</b>              |               |       |               |       |               |       |            |       |          |       |                 |         |
| I                        | 7.75          | 13.84 | 7.50          | 11.67 | 8.75          | 14.79 | 7.88       | 10.88 | 8.21     | 11.75 | 0.34            | 19.63   |
| II                       | 7.84          | 15.00 | 7.50          | 11.92 | 8.84          | 16.33 | 7.88       | 10.88 | 8.38     | 11.38 | 0.34            | 20.04   |
| III                      | 7.71          | 15.00 | 7.25          | 12.00 | 8.79          | 16.00 | 7.96       | 11.13 | 8.46     | 11.38 | 0.32            | 19.50   |
| IV                       | 7.63          | 15.09 | 7.38          | 11.17 | 8.75          | 16.13 | 7.75       | 11.01 | 8.50     | 11.75 | 0.32            | 19.00   |
| Average                  | 7.73          | 14.73 | 7.41          | 11.69 | 8.78          | 15.81 | 7.87       | 10.97 | 8.39     | 11.57 | 0.33            | 19.54   |
| <b>2001</b>              |               |       |               |       |               |       |            |       |          |       |                 |         |
| I                        | 7.25          | 14.75 | 7.25          | 10.25 | 8.63          | 15.46 | 7.75       | 10.88 | 7.75     | 11.75 | 0.31            | 17.88   |
| II                       | 7.25          | 14.75 | 7.25          | 10.25 | 8.63          | 15.25 | 7.75       | 10.88 | 7.75     | 11.75 | 0.31            | 17.88   |
| III                      | 7.67          | 14.92 | 7.67          | 10.42 | 8.96          | 15.42 | 7.92       | 11.05 | 7.92     | 11.75 | 0.32            | 17.88   |
| IV                       | 8.25          | 15.25 | 8.25          | 12.55 | 9.00          | 15.42 | 8.33       | 11.25 | 8.42     | 11.83 | 0.32            | 17.88   |
| Average                  | 7.61          | 14.92 | 7.61          | 10.87 | 8.81          | 15.39 | 7.94       | 11.02 | 7.96     | 11.77 | 0.32            | 17.88   |
| <b>2002</b>              |               |       |               |       |               |       |            |       |          |       |                 |         |
| I                        | 9.00          | 15.75 | 9.00          | 14.59 | 9.00          | 15.25 | 9.00       | 12.00 | 9.00     | 12.00 | 0.32            | 17.63   |
| II                       | 8.33          | 15.08 | 8.33          | 12.05 | 8.75          | 15.08 | 9.00       | 12.00 | 9.00     | 12.00 | 0.31            | 17.80   |
| III                      | 8.00          | 14.75 | 8.00          | 10.88 | 8.63          | 15.00 | 9.00       | 11.50 | 9.00     | 12.00 | 0.31            | 18.50   |
| IV                       | 8.00          | 14.67 | 8.00          | 11.05 | 8.88          | 15.09 | 8.75       | 11.50 | 9.00     | 12.00 | 0.31            | 20.38   |
| Average                  | 8.33          | 15.06 | 8.33          | 12.14 | 8.82          | 15.11 | 8.94       | 11.75 | 9.00     | 12.00 | 0.31            | 18.58   |
| <b>2003</b>              |               |       |               |       |               |       |            |       |          |       |                 |         |
| I                        | 8.00          | 14.00 | 8.00          | 11.13 | 9.00          | 15.42 | 8.63       | 11.50 | 9.00     | 12.00 | 0.32            | 18.46   |
| II                       | 8.00          | 14.00 | 8.00          | 11.38 | 9.00          | 15.50 | 8.71       | 11.50 | 9.00     | 12.00 | 0.30            | 19.46   |
| III                      | 8.00          | 14.00 | 8.00          | 11.75 | 9.00          | 16.00 | 8.63       | 11.50 | 9.00     | 12.00 | 0.29            | 17.63   |
| IV                       | 8.00          | 14.13 | 8.00          | 12.38 | 9.00          | 16.00 | 8.63       | 11.50 | 9.00     | 12.00 | 0.29            | 17.63   |
| Average                  | 8.00          | 14.03 | 8.00          | 11.66 | 9.00          | 15.73 | 8.65       | 11.50 | 9.00     | 12.00 | 0.30            | 18.30   |
| <b>2004</b>              |               |       |               |       |               |       |            |       |          |       |                 |         |
| I                        | 8.17          | 14.80 | 8.17          | 14.38 | 9.17          | 16.00 | 8.63       | 11.50 | 9.00     | 12.00 | 0.29            | 18.67   |
| II                       | 8.42          | 15.46 | 8.33          | 15.92 | 9.13          | 15.75 | 8.75       | 11.50 | 9.00     | 13.00 | 0.30            | 20.25   |
| III                      | 8.50          | 15.63 | 8.33          | 16.17 | 9.00          | 15.59 | 9.00       | 11.50 | 9.00     | 14.00 | 0.30            | 20.25   |
| IV                       | 8.42          | 15.29 | 8.46          | 15.84 | 8.92          | 15.54 | 9.00       | 11.75 | 8.50     | 15.00 | 0.30            | 20.25   |
| Average                  | 8.38          | 15.30 | 8.32          | 15.58 | 9.06          | 15.72 | 8.85       | 11.56 | 8.88     | 13.50 | 0.30            | 19.86   |
| <b>2005</b>              |               |       |               |       |               |       |            |       |          |       |                 |         |
| I                        | 8.58          | 14.08 | 8.54          | 13.54 | 8.96          | 15.67 | 9.00       | 11.75 | 8.83     | 14.58 | 0.30            | 20.25   |
| II                       | 8.75          | 13.42 | 8.67          | 13.25 | 9.13          | 15.33 | 9.00       | 11.75 | 9.00     | 14.00 | 0.30            | 20.25   |
| III                      | 8.67          | 13.58 | 8.71          | 12.83 | 9.13          | 15.42 | 9.00       | 12.00 | 9.00     | 13.63 | 0.31            | 20.54   |
| IV                       | 8.71          | 12.25 | 8.88          | 12.50 | 9.13          | 15.25 | 9.00       | 12.00 | 8.96     | 13.38 | 0.33            | 21.13   |
| Average                  | 8.68          | 13.33 | 8.70          | 13.03 | 9.09          | 15.42 | 9.00       | 11.88 | 8.95     | 13.90 | 0.31            | 20.54   |
| <b>2006</b>              |               |       |               |       |               |       |            |       |          |       |                 |         |
| I                        | 8.63          | 12.25 | 8.88          | 12.13 | 9.25          | 15.46 | 9.00       | 12.00 | 9.05     | 12.80 | 0.36            | 21.46   |
| II                       | 8.63          | 12.25 | 8.75          | 12.13 | 9.17          | 15.50 | 9.00       | 12.00 | 9.03     | 12.25 | 0.37            | 22.58   |
| III                      | 8.38          | 11.75 | 8.45          | 12.00 | 8.71          | 15.50 | 9.00       | 12.00 | 8.50     | 11.88 | 0.40            | 23.25   |
| IV                       | 8.38          | 11.75 | 8.57          | 12.00 | 8.63          | 15.50 | 9.00       | 12.00 | 8.50     | 11.88 | 0.44            | 23.25   |
| Average                  | 8.51          | 12.00 | 8.66          | 12.07 | 8.94          | 15.49 | 9.00       | 12.00 | 8.77     | 12.20 | 0.39            | 22.64   |
| <b>2007</b>              |               |       |               |       |               |       |            |       |          |       |                 |         |
| I                        | 8.38          | 12.50 | 8.63          | 12.38 | 9.25          | 15.50 | 8.88       | 12.00 | 8.43     | 13.10 | 0.46            | 23.25   |
| II                       | 8.60          | 13.00 | 8.73          | 13.13 | 9.17          | 16.00 | 8.88       | 12.00 | 8.71     | 11.90 | 0.46            | 23.25   |
| III                      | 9.16          | 13.33 | 8.95          | 13.30 | 8.71          | 16.00 | 8.88       | 12.00 | 8.85     | 11.97 | 0.43            | 23.25   |
| IV                       | 9.38          | 13.83 | 9.00          | 13.92 | 9.38          | 16.00 | 8.88       | 12.00 | 8.85     | 12.67 | 0.41            | 23.41   |
| Average                  | 8.88          | 13.17 | 8.83          | 13.18 | 9.13          | 15.88 | 8.88       | 12.00 | 8.71     | 12.41 | 0.44            | 23.29   |
| <b>2008</b>              |               |       |               |       |               |       |            |       |          |       |                 |         |
| I p                      | 9.10          | 14.73 | 9.10          | 14.58 | 9.38          | 16.05 | 9.00       | 12.00 | 9.13     | 14.05 | 0.42            | 22.20   |
| II p                     | 9.87          | 17.13 | 10.47         | 16.32 | 9.43          | 16.70 | 9.00       | 12.00 | 9.87     | 15.10 | 0.46            | 22.15   |
| III f                    | 10.95         | 18.13 | 10.93         | 17.55 | 11.23         | 18.10 | 9.00       | 12.00 | 10.90    | 16.13 | 0.55            | 24.00   |
| IV f                     | 11.00         | 16.70 | 11.00         | 16.70 | 10.50         | 16.70 | 9.00       | 12.00 | 10.90    | 16.25 | 0.58            | 26.00   |
| Average                  | 10.23         | 16.67 | 10.38         | 16.29 | 10.14         | 16.89 | 9.00       | 12.00 | 10.20    | 15.38 | 0.50            | 23.59   |

p = Preliminary. f = ERS forecast. -- = not available.

1/ Some prices calculated as averages of quoted ranges. 2/ Whole kernel corn, Midwest. 3/ 4-sieve cut, Midwest. 4/ 4-sieve, Midwest. 5/ Medium sliced, Midwest. 6/ Medium sliced, Midwest. 7/ 26-percent solids for 6/10 and 31 percent for 55-gallon drum, California.

Source: American Institute of Food Distribution, *Price Trends*.



**Price table 8—Frozen vegetables: Quarterly wholesale price trends, 2000-08 1/**

| Year and quarter         | Sweet corn 2/ |        | Snap beans 3/ |      | Green peas 4/ |        | Cauliflower 4/ |      | Broccoli 6/ |      | Spinach 7/ |      |
|--------------------------|---------------|--------|---------------|------|---------------|--------|----------------|------|-------------|------|------------|------|
|                          | 12/16         | 12/2.5 | 12/16         | 12/2 | 12/16         | 12/2.5 | 12/16          | 12/2 | 24/10       | 12/2 | 24/10      | 12/3 |
| ----- Dollars/case ----- |               |        |               |      |               |        |                |      |             |      |            |      |
| <b>2000</b>              |               |        |               |      |               |        |                |      |             |      |            |      |
| I                        | 6.83          | 0.48   | 6.83          | 0.47 | 6.93          | 0.54   | 9.47           | 0.70 | 10.15       | 0.72 | 8.30       | 0.43 |
| II                       | 6.83          | 0.48   | 6.83          | 0.47 | 6.93          | 0.54   | 9.47           | 0.70 | 10.15       | 0.72 | 8.30       | 0.43 |
| III                      | 6.83          | 0.47   | 6.83          | 0.47 | 6.93          | 0.54   | 9.47           | 0.70 | 10.15       | 0.72 | 8.30       | 0.43 |
| IV                       | 6.83          | 0.47   | 6.83          | 0.47 | 6.93          | 0.54   | 9.47           | 0.70 | 10.15       | 0.72 | 8.30       | 0.43 |
| Average                  | 6.83          | 0.47   | 6.83          | 0.47 | 6.93          | 0.54   | 9.47           | 0.70 | 10.15       | 0.72 | 8.30       | 0.43 |
| <b>2001</b>              |               |        |               |      |               |        |                |      |             |      |            |      |
| I                        | 6.83          | 0.46   | 6.83          | 0.47 | 6.93          | 0.53   | 9.47           | 0.70 | 10.15       | 0.72 | 8.30       | 0.43 |
| II                       | 6.83          | 0.46   | 6.84          | 0.47 | 6.88          | 0.53   | 9.47           | 0.70 | 10.15       | 0.72 | 8.30       | 0.43 |
| III                      | 6.88          | 0.49   | 6.85          | 0.47 | 6.88          | 0.55   | 9.50           | 0.72 | 10.15       | 0.72 | 8.30       | 0.45 |
| IV                       | 6.88          | 0.49   | 6.85          | 0.49 | 6.88          | 0.55   | 9.50           | 0.72 | 10.15       | 0.72 | 8.30       | 0.45 |
| Average                  | 6.86          | 0.47   | 6.84          | 0.48 | 6.89          | 0.54   | 9.49           | 0.71 | 10.15       | 0.72 | 8.30       | 0.44 |
| <b>2002</b>              |               |        |               |      |               |        |                |      |             |      |            |      |
| I                        | 6.88          | 0.49   | 6.93          | 0.49 | 6.88          | 0.55   | 9.50           | 0.72 | 10.15       | 0.72 | 8.30       | 0.48 |
| II                       | 7.10          | 0.50   | 7.10          | 0.50 | 7.05          | 0.55   | 9.49           | 0.72 | 10.15       | 0.72 | 8.30       | 0.48 |
| III                      | 7.10          | 0.50   | 7.10          | 0.51 | 7.07          | 0.55   | 9.47           | 0.72 | 10.15       | 0.72 | 8.30       | 0.48 |
| IV                       | 7.10          | 0.51   | 7.10          | 0.54 | 7.10          | 0.55   | 9.47           | 0.72 | 10.15       | 0.72 | 8.30       | 0.48 |
| Average                  | 7.05          | 0.50   | 7.06          | 0.51 | 7.02          | 0.55   | 9.48           | 0.72 | 10.15       | 0.72 | 8.30       | 0.48 |
| <b>2003</b>              |               |        |               |      |               |        |                |      |             |      |            |      |
| I                        | 7.10          | 0.55   | 7.10          | 0.54 | 7.10          | 0.55   | 9.47           | 0.72 | 10.15       | 0.72 | 8.30       | 0.48 |
| II                       | 7.10          | 0.55   | 7.10          | 0.54 | 7.10          | 0.55   | 9.47           | 0.72 | 10.15       | 0.72 | 8.30       | 0.48 |
| III                      | 7.10          | 0.55   | 7.10          | 0.54 | 7.10          | 0.55   | 9.47           | 0.72 | 10.15       | 0.72 | 8.30       | 0.48 |
| IV                       | 7.10          | 0.55   | 7.10          | 0.54 | 7.10          | 0.55   | 9.47           | 0.72 | 10.15       | 0.72 | 8.30       | 0.48 |
| Average                  | 7.10          | 0.55   | 7.10          | 0.54 | 7.10          | 0.55   | 9.47           | 0.72 | 10.15       | 0.72 | 8.30       | 0.48 |
| <b>2004</b>              |               |        |               |      |               |        |                |      |             |      |            |      |
| I                        | 7.10          | 0.55   | 7.10          | 0.54 | 7.10          | 0.55   | 9.50           | 0.72 | 10.15       | 0.72 | 8.30       | 0.48 |
| II                       | 7.10          | 0.55   | 7.10          | 0.54 | 7.38          | 0.55   | 9.50           | 0.72 | 10.15       | 0.72 | 8.30       | 0.48 |
| III                      | 7.38          | 0.56   | 7.38          | 0.58 | 7.38          | 0.58   | 9.50           | 0.72 | 10.15       | 0.72 | 8.30       | 0.50 |
| IV                       | 7.30          | 0.54   | 7.33          | 0.58 | 7.28          | 0.57   | 9.50           | 0.72 | 10.15       | 0.72 | 8.30       | 0.50 |
| Average                  | 7.22          | 0.55   | 7.23          | 0.56 | 7.29          | 0.56   | 9.50           | 0.72 | 10.15       | 0.72 | 8.30       | 0.49 |
| <b>2005</b>              |               |        |               |      |               |        |                |      |             |      |            |      |
| I                        | 7.00          | 0.48   | 7.33          | 0.57 | 7.28          | 0.52   | 9.47           | 0.72 | 10.15       | 0.72 | 8.30       | 0.52 |
| II                       | 7.04          | 0.47   | 7.33          | 0.56 | 7.28          | 0.52   | 9.47           | 0.72 | 10.15       | 0.72 | 8.30       | 0.52 |
| III                      | 7.12          | 0.48   | 7.33          | 0.56 | 7.28          | 0.52   | 9.47           | 0.72 | 10.15       | 0.72 | 8.30       | 0.53 |
| IV                       | 7.10          | 0.48   | --            | 0.56 | 7.28          | 0.52   | 9.47           | 0.72 | 10.15       | 0.72 | 8.30       | 0.52 |
| Average                  | 7.07          | 0.48   | 7.33          | 0.56 | 7.28          | 0.52   | 9.47           | 0.72 | 10.15       | 0.72 | 8.30       | 0.52 |
| <b>2006</b>              |               |        |               |      |               |        |                |      |             |      |            |      |
| I                        | 7.10          | 0.50   | 7.25          | 0.56 | 7.28          | 0.52   | 9.47           | 0.72 | 10.15       | 0.72 | 8.32       | 0.52 |
| II                       | 7.35          | 0.50   | 7.63          | 0.56 | 7.63          | 0.55   | 9.47           | 0.72 | 10.30       | 0.72 | 8.81       | 0.49 |
| III                      | 7.58          | 0.50   | 7.63          | 0.56 | 7.34          | 0.54   | 9.47           | 0.72 | 10.38       | 0.73 | 8.88       | 0.50 |
| IV                       | 7.58          | 0.50   | 7.63          | 0.56 | 7.20          | 0.54   | 9.47           | 0.72 | 10.38       | 0.73 | 8.88       | 0.50 |
| Average                  | 7.40          | 0.50   | 7.53          | 0.56 | 7.36          | 0.54   | 9.47           | 0.72 | 10.30       | 0.72 | 8.72       | 0.50 |
| <b>2007</b>              |               |        |               |      |               |        |                |      |             |      |            |      |
| I                        | 7.58          | 0.44   | 7.63          | 0.56 | 7.20          | 0.54   | 9.47           | 0.72 | 10.38       | 0.73 | 8.88       | 0.50 |
| II                       | 7.50          | 0.48   | 7.61          | 0.57 | 7.49          | 0.55   | 9.47           | 0.72 | 10.38       | 0.73 | 8.88       | 0.50 |
| III                      | 7.58          | 0.44   | 7.95          | 0.59 | 7.34          | 0.54   | 9.47           | 0.72 | 10.38       | 0.73 | 8.88       | 0.48 |
| IV                       | 7.84          | 0.44   | 7.75          | 0.59 | 7.60          | 0.54   | 9.47           | 0.72 | 10.42       | 0.79 | 8.71       | 0.50 |
| Average                  | 7.63          | 0.45   | 7.74          | 0.58 | 7.41          | 0.54   | 9.47           | 0.72 | 10.39       | 0.74 | 8.84       | 0.50 |
| <b>2008</b>              |               |        |               |      |               |        |                |      |             |      |            |      |
| I p                      | 7.88          | 0.44   | 7.75          | 0.59 | 7.38          | 0.60   | 9.47           | 0.72 | 10.75       | 0.83 | 8.73       | 0.50 |
| II p                     | 7.84          | 0.44   | 7.75          | 0.59 | 7.60          | 0.60   | 9.47           | 0.72 | 14.90       | 0.83 | 8.75       | 0.50 |
| III f                    | 8.00          | 0.50   | 8.00          | 0.59 | 8.00          | 0.60   | 9.75           | 0.75 | 14.90       | 0.83 | 8.80       | 0.51 |
| IV f                     | 8.00          | 0.50   | 8.00          | 0.59 | 8.00          | 0.60   | 9.75           | 0.75 | 14.90       | 0.83 | 8.80       | 0.51 |
| Average                  | 7.93          | 0.47   | 7.88          | 0.59 | 7.75          | 0.60   | 9.61           | 0.74 | 13.86       | 0.83 | 8.77       | 0.51 |

p = Preliminary. Except for peas and broccoli, foodservice prices carried over from the 4th quarter of 2007. f = ERS forecast.

1/ Some prices calculated as averages of quoted ranges. 2/ Whole kernel (cut) corn, f.o.b. West Coast basis. 3/ Regular cut. 4/ Poly bags. 5/ Sliced, poly bags. 6/ Spears. 7/ Chopped. F.o.b. West Coast.

Source: American Institute of Food Distribution, *Price Trends*.

Price table 9—Potatoes and pulses: Prices received by U.S. growers, by month, 2001-08 1/

| Item                                    | Year | Jan.  | Feb.  | Mar.  | Apr.  | May   | June  | July  | Aug.  | Sep.  | Oct.  | Nov.  | Dec.  | Season average |
|---|------|-------|-------|-------|-------|-------|-------|-------|-------|-------|-------|-------|-------|----------------|
| ----- Dollars/hundredweight (cwt) ----- |      |       |       |       |       |       |       |       |       |       |       |       |       |                |
| <b>Potatoes, all uses</b>               | 2001 | 4.72  | 5.28  | 5.12  | 5.47  | 5.22  | 5.71  | 6.36  | 7.20  | 6.23  | 5.28  | 6.16  | 6.73  | 6.99           |
|   | 2002 | 7.34  | 7.33  | 8.24  | 8.01  | 8.59  | 9.38  | 10.59 | 7.39  | 6.29  | 5.53  | 6.24  | 6.62  | 6.67           |
|   | 2003 | 6.44  | 6.47  | 6.79  | 6.99  | 6.94  | 6.67  | 6.84  | 5.57  | 5.24  | 5.03  | 5.42  | 5.76  | 5.89           |
|   | 2004 | 5.70  | 5.87  | 6.09  | 6.62  | 6.47  | 6.47  | 6.44  | 5.60  | 5.23  | 4.61  | 4.89  | 5.28  | 5.66           |
|   | 2005 | 5.64  | 5.79  | 6.44  | 6.20  | 6.23  | 6.30  | 7.05  | 6.61  | 5.69  | 5.37  | 6.36  | 6.89  | 7.06           |
|   | 2006 | 7.08  | 6.76  | 8.50  | 8.35  | 7.83  | 8.41  | 9.77  | 7.70  | 6.12  | 5.76  | 6.65  | 6.95  | 7.33           |
|   | 2007 | 7.16  | 7.42  | 7.93  | 8.71  | 7.95  | 7.75  | 8.48  | 6.85  | 5.92  | 5.78  | 6.55  | 7.06  | 7.12           |
|   | 2008 | 7.33  | 7.51  | 8.37  | 8.45  | 9.16  | 10.75 | 11.42 |       |       |       |       |       |                |
| <b>Potatoes, table stock</b>            | 2001 | 3.54  | 5.41  | 4.48  | 5.53  | 7.23  | 8.31  | 8.93  | 12.96 | 10.96 | 8.69  | 8.68  | 9.37  | 10.79          |
|   | 2002 | 10.49 | 11.63 | 13.19 | 12.17 | 14.69 | 16.28 | 16.70 | 15.31 | 11.52 | 8.34  | 8.62  | 8.60  | 9.59           |
|   | 2003 | 8.09  | 8.54  | 8.58  | 8.80  | 9.09  | 9.16  | 8.96  | 8.04  | 7.08  | 6.95  | 6.70  | 6.52  | 7.32           |
|   | 2004 | 6.26  | 6.68  | 7.20  | 7.82  | 7.76  | 9.04  | 9.07  | 7.87  | 6.97  | 5.09  | 4.89  | 5.56  | 6.75           |
|   | 2005 | 6.13  | 6.58  | 8.04  | 7.22  | 7.43  | 8.23  | 10.37 | 11.30 | 10.77 | 8.90  | 9.02  | 9.17  | 10.36          |
|   | 2006 | 9.58  | 9.13  | 13.78 | 12.32 | 10.51 | 11.90 | 13.14 | 13.99 | 9.67  | 9.06  | 8.48  | 8.81  | 10.27          |
|   | 2007 | 9.11  | 10.10 | 11.04 | 13.03 | 11.08 | 10.31 | 11.33 | 10.42 | 7.92  | 7.87  | 8.32  | 8.65  | 9.53           |
|   | 2008 | 9.26  | 9.86  | 11.42 | 11.66 | 14.30 | 18.61 |       |       |       |       |       |       |                |
| <b>Potatoes, processing</b>             | 2001 | 4.95  | 5.15  | 5.10  | 5.19  | 5.10  | 4.96  | 5.24  | 4.43  | 4.56  | 4.47  | 4.89  | 5.15  | 5.05           |
|   | 2002 | 5.37  | 5.27  | 5.34  | 5.66  | 6.02  | 5.83  | 6.09  | 4.67  | 4.62  | 4.79  | 5.14  | 5.35  | 5.16           |
|   | 2003 | 5.38  | 5.32  | 5.28  | 5.33  | 5.59  | 5.60  | 5.39  | 4.69  | 4.64  | 4.52  | 4.85  | 5.31  | 5.10           |
|   | 2004 | 5.29  | 5.24  | 5.24  | 5.54  | 5.64  | 5.54  | 5.30  | 4.76  | 4.60  | 4.45  | 4.88  | 5.10  | 5.06           |
|   | 2005 | 5.29  | 5.30  | 5.37  | 5.47  | 5.68  | 5.51  | 5.45  | 4.92  | 4.65  | 4.66  | 4.89  | 5.51  | 5.39           |
|   | 2006 | 5.65  | 5.59  | 5.74  | 6.04  | 6.30  | 6.46  | 6.51  | 5.47  | 5.22  | 5.10  | 5.70  | 5.96  | 5.90           |
|   | 2007 | 6.14  | 6.04  | 6.36  | 6.56  | 6.74  | 6.71  | 6.53  | 5.51  | 5.34  | 5.32  | 5.64  | 6.07  | 5.86           |
|   | 2008 | 6.17  | 6.25  | 6.15  | 6.50  | 6.71  | 6.54  |       |       |       |       |       |       |                |
| <b>Dry edible beans</b>                 | 2001 | 15.10 | 15.30 | 14.90 | 15.60 | 16.90 | 16.40 | 16.80 | 17.40 | 18.40 | 19.20 | 22.70 | 21.70 | 22.10          |
|   | 2002 | 21.50 | 26.10 | 27.10 | 27.50 | 27.80 | 27.40 | 24.50 | 23.20 | 17.90 | 16.60 | 15.90 | 16.10 | 17.10          |
|   | 2003 | 16.40 | 19.20 | 15.90 | 18.70 | 19.10 | 16.60 | 17.20 | 18.00 | 17.60 | 17.60 | 19.10 | 17.40 | 18.40          |
|   | 2004 | 17.20 | 17.50 | 20.20 | 19.60 | 19.90 | 20.00 | 19.20 | 20.90 | 22.80 | 24.50 | 25.90 | 27.00 | 25.70          |
|   | 2005 | 27.20 | 27.80 | 26.60 | 28.70 | 31.10 | 27.70 | 25.40 | 21.40 | 18.00 | 18.80 | 18.00 | 18.10 | 18.50          |
|   | 2006 | 19.20 | 17.40 | 17.10 | 18.90 | 19.30 | 19.00 | 21.70 | 19.50 | 18.80 | 19.50 | 21.80 | 21.80 | 22.10          |
|   | 2007 | 22.70 | 25.40 | 25.70 | 24.50 | 24.40 | 24.40 | 28.50 | 25.70 | 24.50 | 25.90 | 28.40 | 27.00 | 26.40          |
|   | 2008 | 27.30 | 32.20 | 32.40 | 34.40 | 35.70 | 33.00 | 38.20 |       |       |       |       |       |                |
| <b>Green peas, whole-dry 2/</b>         | 2001 | 5.84  | 6.28  | 6.44  | 6.53  | 6.43  | 6.28  | 6.25  | 6.19  | 6.21  | 6.35  | 6.56  | 6.88  | 6.80           |
|   | 2002 | 7.04  | 7.06  | 7.13  | 7.40  | 7.25  | 7.25  | 7.25  | 7.13  | 7.38  | 7.68  | 7.91  | 8.33  | 8.89           |
|   | 2003 | 9.08  | 9.81  | 10.88 | 10.60 | 10.44 | 9.92  | 9.30  | 7.56  | 7.63  | 8.09  | 8.84  | 9.08  | 9.26           |
|   | 2004 | 9.56  | 9.94  | 10.50 | 10.56 | 10.88 | 8.43  | 7.38  | 6.45  | 6.41  | 6.66  | 6.93  | 6.69  | 6.36           |
|   | 2005 | 6.63  | 6.56  | 6.03  | 5.69  | 5.47  | 5.38  | 5.31  | 5.15  | 4.84  | 4.81  | 4.80  | 4.75  | 5.26           |
|   | 2006 | 4.97  | 5.31  | 5.50  | 5.78  | 6.00  | 5.91  | 5.84  | 5.93  | 6.44  | 6.70  | 7.19  | 7.58  | 8.07           |
|   | 2007 | 7.81  | 8.69  | 9.50  | 10.25 | 10.43 | 10.44 | 10.68 | 10.88 | 11.88 | 13.25 | 13.75 | 13.75 | 14.50          |
|   | 2008 | 15.81 | 19.00 | 19.13 | 19.20 | 19.00 | 19.00 | 18.90 | 18.25 |       |       |       |       |                |
| <b>Yellow peas, whole-dry 2/</b>        | 2001 | 5.81  | 6.31  | 6.44  | 6.38  | 6.40  | 6.25  | 6.25  | 6.19  | 6.17  | 6.25  | 6.56  | 6.79  | 6.90           |
|   | 2002 | 7.04  | 7.25  | 7.31  | 7.68  | 7.66  | 7.59  | 7.38  | 6.50  | 6.72  | 7.10  | 7.34  | 7.58  | 7.66           |
|   | 2003 | 7.42  | 7.94  | 8.03  | 8.50  | 8.75  | 8.67  | 8.44  | 6.63  | 6.43  | 6.75  | 7.53  | 7.75  | 7.97           |
|   | 2004 | 7.91  | 8.72  | 9.03  | 9.25  | 9.42  | 7.73  | 7.13  | 6.08  | 5.97  | 6.25  | 6.43  | 6.25  | 6.05           |
|   | 2005 | 6.00  | 6.00  | 5.73  | 5.56  | 5.59  | 5.55  | 5.25  | 5.15  | 4.66  | 4.63  | 4.63  | 4.63  | 4.99           |
|   | 2006 | 4.75  | 4.97  | 5.00  | 5.25  | 5.50  | 5.50  | 5.53  | 5.35  | 5.78  | 6.10  | 6.66  | 7.04  | 7.30           |
|   | 2007 | 7.13  | 7.94  | 8.63  | 8.75  | 9.20  | 9.50  | 9.60  | 9.75  | 10.69 | 11.80 | 13.00 | 13.25 | 12.75          |
|   | 2008 | 14.81 | 15.19 | 15.38 | 17.80 | 17.50 | 17.50 | 17.63 | 15.07 |       |       |       |       |                |
| <b>Lentils, regular (Brewer) 2/</b>     | 2001 | 10.84 | 10.50 | 10.22 | 10.25 | 9.90  | 9.91  | 9.78  | 9.84  | 9.83  | 9.75  | 9.72  | 9.71  | 9.58           |
|   | 2002 | 9.44  | 9.06  | 9.03  | 9.75  | 9.59  | 9.44  | 9.40  | 9.50  | 10.75 | 12.85 | 13.81 | 14.25 | 14.84          |
|   | 2003 | 15.42 | 17.63 | 18.63 | 18.70 | 18.63 | 18.56 | 15.20 | 14.50 | 14.85 | 16.50 | 16.88 | 16.50 | 17.41          |
|   | 2004 | 17.13 | 19.00 | 20.90 | 21.25 | 20.38 | 15.80 | 14.19 | 13.25 | 14.38 | 15.56 | 15.95 | 15.38 | 13.93          |
|   | 2005 | 14.69 | 14.19 | 13.45 | 12.56 | 12.19 | 11.40 | 11.25 | 11.25 | 11.34 | 11.25 | 10.78 | 10.08 | 10.77          |
|   | 2006 | 10.38 | 10.31 | 10.25 | 10.69 | 10.75 | 10.94 | 10.94 | 12.25 | 13.06 | 14.15 | 14.25 | 14.50 | 14.01          |
|   | 2007 | 14.59 | 14.81 | 14.75 | 14.75 | 14.85 | 15.25 | 15.25 | 18.00 | 20.50 | 24.40 | 28.00 | 30.00 | 27.00          |
|   | 2008 | 30.38 | 30.13 | 32.38 | 34.25 | 33.88 | 34.00 | 34.20 | 34.50 |       |       |       |       |                |

-- = not available. 1/ Prices for 2008 are preliminary. 2/ Grower bids for U.S. no. 1 grade reported by the *Bean Market News* for Idaho & Washington.

The season averages for peas and lentils presented here are calculated by ERS based on a July-June marketing year.

Sources: USDA, National Agricultural Statistics Service, *Agricultural Prices*, and USDA, Agricultural Marketing Service, *Bean Market News*.

**Price table 10—U.S. fresh-market herbs: Selected monthly wholesale prices in San Francisco, CA, 2007-08**

| Herb          | Unit         | 2007                                    |       |       | 2008  |       |       | Change from prev. year |        |        |
|---------------|--------------|---|-------|-------|-------|-------|-------|------------------------|--------|--------|
|               |              | May                                     | June  | July  | May   | June  | July  | May                    | June   | July   |
|               |              | ----- Dollars/hundredweight (cwt) ----- |       |       |       |       |       | ----- Percent -----    |        |        |
| Anise         | 24-ct crtn   | 19.56                                   | 11.70 | 12.00 | 22.83 | 18.44 | 20.50 | 16.7                   | 57.6   | 70.8   |
| Arrugula      | 12-ct ctns   | 8.00                                    | 8.00  | 8.00  | 8.00  | 8.00  | 8.00  | .0                     | .0     | .0     |
| Basil         | 12-ct ctns   | 8.25                                    | 8.25  | 8.25  | 9.50  | 9.50  | 9.50  | 15.2                   | 15.2   | 15.2   |
| Celeriac      | 12-ct ctns   | 13.00                                   | 13.00 | 13.00 | 12.50 | 12.50 | 12.50 | - 3.8                  | - 3.8  | - 3.8  |
| Chervil       | 12-ct flmbag | 6.75                                    | 6.75  | 6.75  | 6.25  | 6.25  | 6.25  | - 7.4                  | - 7.4  | - 7.4  |
| Chives        | 12-ct flmbag | 5.25                                    | 5.25  | 5.50  | 6.00  | 6.00  | 5.88  | 14.3                   | 14.3   | 6.9    |
| Cilantro      | 60-ct ctns   | 9.50                                    | 12.19 | 15.72 | 12.38 | 10.06 | 12.63 | 30.3                   | - 17.5 | - 19.7 |
| Cipolinos     | 10-lb ctns   | 17.50                                   | 17.50 | 17.50 | 18.00 | 18.00 | 18.00 | 2.9                    | 2.9    | 2.9    |
| Dill          | 12-ct ctns   | 7.75                                    | 7.94  | 8.00  | 7.88  | 7.75  | 7.75  | 1.7                    | - 2.4  | - 3.1  |
| Dry Eschallot | 5-lb sack    | 5.63                                    | 6.00  | 6.00  | 5.78  | 5.88  | 5.94  | 2.7                    | - 2.0  | - 1.0  |
| Horseradish   | 5-lb bag     | 2.15                                    | 2.15  | 2.15  | 2.41  | 2.40  | 2.40  | 12.1                   | 11.6   | 11.6   |
| Lemon grass   | Per lb-ctns  | 2.00                                    | 2.25  | 2.25  | 0.81  | 0.80  | 0.80  | - 59.5                 | - 64.4 | - 64.4 |
| Marjoram      | 12-ct flmbag | 5.63                                    | 5.63  | 5.63  | 5.75  | 5.75  | 5.75  | 2.1                    | 2.1    | 2.1    |
| Oregano       | 12-ct flmbag | 5.63                                    | 5.63  | 5.63  | 5.75  | 5.75  | 5.75  | 2.1                    | 2.1    | 2.1    |
| Rosemary      | 12-ct flmbag | 5.63                                    | 5.63  | 5.63  | 5.75  | 5.75  | 5.75  | 2.1                    | 2.1    | 2.1    |
| Mint          | 12-ct ctns   | 8.00                                    | 8.00  | 8.00  | 8.00  | 8.00  | 8.00  | .0                     | .0     | .0     |
| Sage          | 12-ct flmbag | 5.63                                    | 5.63  | 5.63  | 5.75  | 5.75  | 5.75  | 2.1                    | 2.1    | 2.1    |
| Salsify       | 5-1kg flmbg  | 29.25                                   | 29.25 | 29.25 | 30.00 | 30.00 | 30.00 | 2.6                    | 2.6    | 2.6    |
| Savory        | 24-ct flmbag | 5.63                                    | 5.63  | 5.63  | 5.75  | 5.75  | 5.75  | 2.1                    | 2.1    | 2.1    |
| Sorrel        | 12-ct flmbag | 5.63                                    | 5.63  | 5.63  | 5.75  | 5.75  | 5.75  | 2.1                    | 2.1    | 2.1    |
| Tarragon      | 12-ct flmbag | 7.50                                    | 7.50  | 7.50  | 6.63  | 6.63  | 6.63  | - 11.6                 | - 11.6 | - 11.6 |
| Thyme         | 12-ct flmbag | 5.63                                    | 5.63  | 5.63  | 5.75  | 5.75  | 5.75  | 2.1                    | 2.1    | 2.1    |
| Verdulaga     | 24-ct ctns   | 9.00                                    | 11.50 | 9.00  | 7.00  | 7.00  | 7.00  | - 22.2                 | - 39.1 | - 22.2 |
| Watercress    | 12-ct ctns   | 10.69                                   | 14.25 | 12.00 | 14.88 | 15.00 | 15.00 | 39.2                   | 5.3    | 25.0   |

-- = not available.

Source: Derived from data provided by USDA, Agricultural Marketing Service, FV Data Portal, <http://marketnews.usda.gov/portal/fv>

**Price table 11—Farm-retail price spreads, 2005-08**

| Item                                   | Annual |       |       | 2007  |       |       |       | 2008  |       |       |
|--|--------|-------|-------|-------|-------|-------|-------|-------|-------|-------|
|  | 2005   | 2006  | 2007  | Sept  | Oct   | Nov   | Dec   | Jan   | Feb   | Mar   |
| <b>Market basket</b>                   |        |       |       |       |       |       |       |       |       |       |
| Retail cost (1982-84=100)              | 198.2  | 201.8 | 211.0 | 213.3 | 214.5 | 215.5 | 216.4 | 219.0 | 219.0 | 218.4 |
| Farm value (1982-84=100)               | 122.2  | 119.5 | 141.9 | 148.0 | 146.4 | 151.0 | 152.2 | 150.9 | 147.6 | 145.9 |
| Farm-retail spread (1982-84=100)       | 239.2  | 246.2 | 248.3 | 248.4 | 251.2 | 250.2 | 251.0 | 255.7 | 257.4 | 257.5 |
| Farm value-retail cost (percent)       | 21.6   | 20.7  | 23.6  | 24.3  | 23.9  | 24.5  | 24.6  | 24.1  | 23.6  | 23.4  |
| <b>Fresh fruit</b>                     |        |       |       |       |       |       |       |       |       |       |
| Retail cost (1982-84=100)              | 330.7  | 350.6 | 367.6 | 365.2 | 369.1 | 381.0 | 385.1 | 392.1 | 377.0 | 367.1 |
| Farm value (1982-84=100)               | 173.4  | 195.8 | 193.4 | 202.1 | 188.9 | 214.2 | 214.2 | 253.2 | 175.4 | 161.6 |
| Farm-retail spread (1982-84=100)       | 403.3  | 422.1 | 448.1 | 440.5 | 452.3 | 458.0 | 464.0 | 456.2 | 470.1 | 462.0 |
| Farm value-retail cost (percent)       | 16.6   | 17.6  | 16.6  | 17.5  | 16.2  | 17.8  | 17.6  | 20.4  | 14.7  | 13.9  |
| <b>Fresh vegetables</b>                |        |       |       |       |       |       |       |       |       |       |
| Retail cost (1982-84=100)              | 271.7  | 283.0 | 293.5 | 282.3 | 292.7 | 300.4 | 306.1 | 317.5 | 305.0 | 301.5 |
| Farm value (1982-84=100)               | 145.5  | 156.7 | 169.0 | 126.9 | 151.7 | 141.3 | 165.5 | 147.9 | 131.9 | 158.1 |
| Farm-retail spread (1982-84=100)       | 336.7  | 347.9 | 357.4 | 362.2 | 365.2 | 382.2 | 378.4 | 404.7 | 394.0 | 375.2 |
| Farm value-retail cost (percent)       | 18.2   | 18.8  | 19.6  | 15.3  | 17.6  | 16.0  | 18.4  | 15.8  | 14.7  | 17.8  |
| <b>Processed fruits and vegetables</b> |        |       |       |       |       |       |       |       |       |       |
| Retail cost (1982-84=100)              | 192.3  | 201.2 | 208.7 | 212.6 | 212.1 | 207.7 | 210.7 | 214.4 | 218.0 | 215.7 |
| Farm value (1982-84=100)               | 137.7  | 140.1 | 145.8 | 146.1 | 147.2 | 148.7 | 150.0 | 146.3 | 150.3 | 152.0 |
| Farm-retail spread (1982-84=100)       | 209.4  | 220.3 | 228.3 | 233.4 | 232.3 | 226.1 | 229.6 | 235.6 | 239.1 | 235.6 |
| Farm value-retail cost (percent)       | 17.0   | 16.6  | 16.6  | 16.3  | 16.5  | 17.0  | 16.9  | 16.2  | 16.4  | 16.8  |
| <b>Fats and oils</b>                   |        |       |       |       |       |       |       |       |       |       |
| Retail cost (1982-84=100)              | 167.7  | 167.8 | 172.9 | 174.1 | 173.7 | 174.3 | 174.1 | 181.8 | 184.9 | 182.8 |
| Farm value (1982-84=100)               | 108.2  | 101.9 | 150.9 | 162.6 | 153.3 | 148.6 | 162.6 | 208.8 | 228.1 | 234.1 |
| Farm-retail spread (1982-84=100)       | 189.6  | 192.1 | 181.1 | 178.3 | 181.2 | 183.7 | 178.3 | 171.9 | 169.0 | 163.9 |
| Farm value-retail cost (percent)       | 17.3   | 16.3  | 23.5  | 25.1  | 23.7  | 22.9  | 25.1  | 30.9  | 33.2  | 34.4  |
| <b>Meat products</b>                   |        |       |       |       |       |       |       |       |       |       |
| Retail cost (1982-84=100)              | 187.5  | 188.9 | 195.0 | 196.2 | 196.6 | 196.8 | 195.6 | 196.0 | 195.6 | 195.9 |
| Farm value (1982-84=100)               | 121.4  | 116.7 | 124.7 | 126.9 | 123.9 | 125.1 | 124.3 | 122.8 | 121.3 | 117.7 |
| Farm-retail spread (1982-84=100)       | 255.4  | 263.0 | 267.1 | 267.3 | 271.2 | 270.4 | 268.8 | 271.1 | 271.8 | 276.2 |
| Farm value-retail cost (percent)       | 32.8   | 31.3  | 32.4  | 32.8  | 31.9  | 32.2  | 32.2  | 31.7  | 31.4  | 30.4  |
| <b>Dairy products</b>                  |        |       |       |       |       |       |       |       |       |       |
| Retail cost (1982-84=100)              | 182.4  | 181.2 | 194.8 | 203.5 | 205.3 | 206.0 | 205.3 | 206.9 | 208.2 | 206.2 |
| Farm value (1982-84=100)               | 118.7  | 101.7 | 152.9 | 174.0 | 172.1 | 175.3 | 170.9 | 163.5 | 152.5 | 141.8 |
| Farm-retail spread (1982-84=100)       | 241.1  | 254.5 | 233.3 | 230.7 | 235.9 | 234.3 | 237.0 | 246.9 | 259.6 | 265.5 |
| Farm value-retail cost (percent)       | 31.2   | 26.9  | 37.7  | 41.0  | 40.2  | 40.8  | 39.9  | 37.9  | 35.1  | 33.0  |
| <b>Poultry</b>                         |        |       |       |       |       |       |       |       |       |       |
| Retail cost (1982-84=100)              | 185.3  | 182.0 | 191.4 | 197.1 | 195.6 | 194.6 | 194.0 | 196.9 | 195.8 | 196.1 |
| Farm value (1982-84=100)               | 139.4  | 128.5 | 154.8 | 159.3 | 146.3 | 151.8 | 144.7 | 151.8 | 158.5 | 150.3 |
| Farm-retail spread (1982-84=100)       | 238.1  | 243.7 | 233.4 | 240.6 | 252.4 | 243.9 | 250.8 | 248.8 | 238.7 | 248.9 |
| Farm value-retail cost (percent)       | 40.3   | 37.8  | 43.3  | 43.3  | 40.0  | 41.7  | 39.9  | 41.3  | 43.3  | 41.0  |
| <b>Eggs</b>                            |        |       |       |       |       |       |       |       |       |       |
| Retail cost (1982-84=100)              | 144.1  | 150.6 | 195.3 | 211.6 | 208.0 | 214.7 | 234.0 | 237.9 | 238.8 | 240.1 |
| Farm value (1982-84=100)               | 60.1   | 69.5  | 136.3 | 165.0 | 137.8 | 202.8 | 220.0 | 206.2 | 209.7 | 223.4 |
| Farm-retail spread (1982-84=100)       | 295.2  | 296.2 | 301.3 | 295.3 | 334.1 | 236.1 | 259.2 | 294.8 | 291.1 | 270.0 |
| Farm value-retail cost (percent)       | 26.8   | 29.7  | 44.8  | 50.1  | 42.6  | 60.7  | 60.4  | 55.7  | 56.4  | 59.8  |
| <b>Cereal and bakery products</b>      |        |       |       |       |       |       |       |       |       |       |
| Retail cost (1982-84=100)              | 209.0  | 213.0 | 222.1 | 223.4 | 224.7 | 225.7 | 226.5 | 228.7 | 233.4 | 236.3 |
| Farm value (1982-84=100)               | 96.4   | 111.1 | 149.5 | 166.6 | 192.5 | 177.9 | 187.3 | 181.6 | 216.8 | 230.5 |
| Farm-retail spread (1982-84=100)       | 224.6  | 227.2 | 232.2 | 231.3 | 229.2 | 232.4 | 232.0 | 235.3 | 235.7 | 237.1 |
| Farm value-retail cost (percent)       | 5.7    | 6.4   | 8.2   | 9.1   | 10.5  | 9.7   | 10.1  | 9.7   | 11.4  | 11.9  |

1/ Retail costs are based on CPI-U of retail prices for domestically produced farm foods, published monthly by the Bureau of Labor Statistics (BLS). Farm value is the payment for the quantity of farm equivalent to the retail unit, less allowance for byproduct. Farm values are based on prices at first point of sale, and may include marketing charges such as grading and packing for some commodities. The farm-retail spread, the difference between the retail value and farm value, represents charges for assembling, processing, transporting, and distributing.

Source: USDA, ERS, <http://www.ers.usda.gov/publications/agoutlook/aotables/2008/06Jun/aotab08.xls>