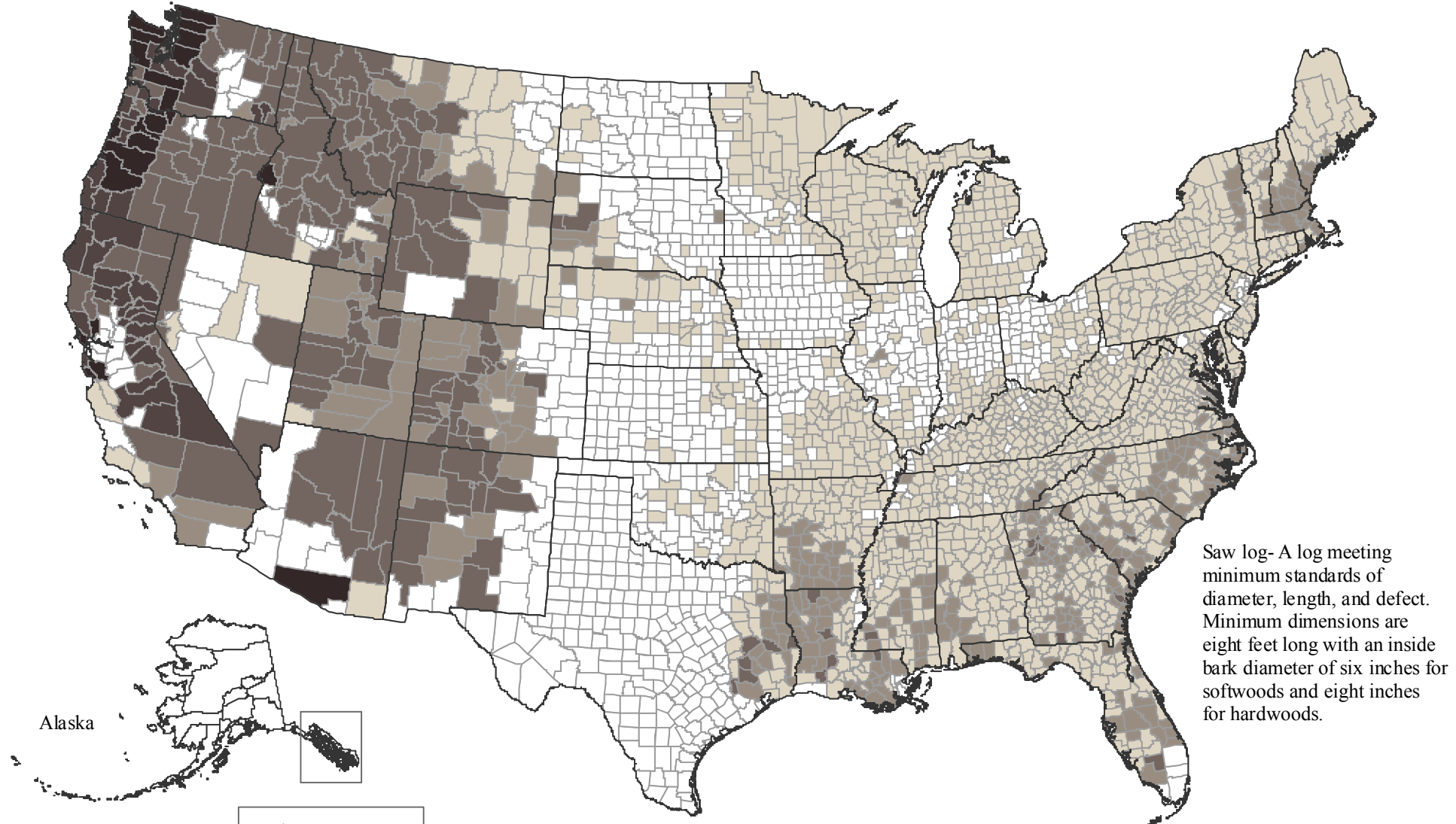


# Volume of Softwood Sawtimber Trees per Acre of Timberland

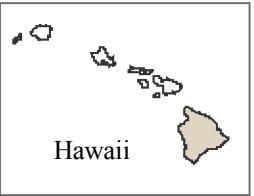


Saw log- A log meeting minimum standards of diameter, length, and defect. Minimum dimensions are eight feet long with an inside bark diameter of six inches for softwoods and eight inches for hardwoods.

Alaska

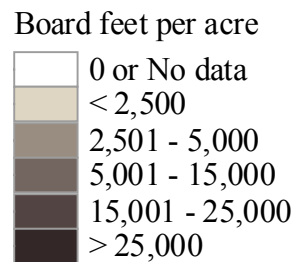


Alaska 'Panhandle'



Hawaii

Average = 1,800



USDA FOREST SERVICE  
Forest Inventory & Analysis



Sources: USDA Forest Service, 2002 RPA data and the National Atlas of the United States. For information visit: <http://www.fia.fs.fed.us/>. Produced September, 2006. Author: D. Kaisershot.