

# The epizootiology of West Nile virus in Florida, five years without St Louis Encephalitis



**Carina Blackmore, DVM, PhD**

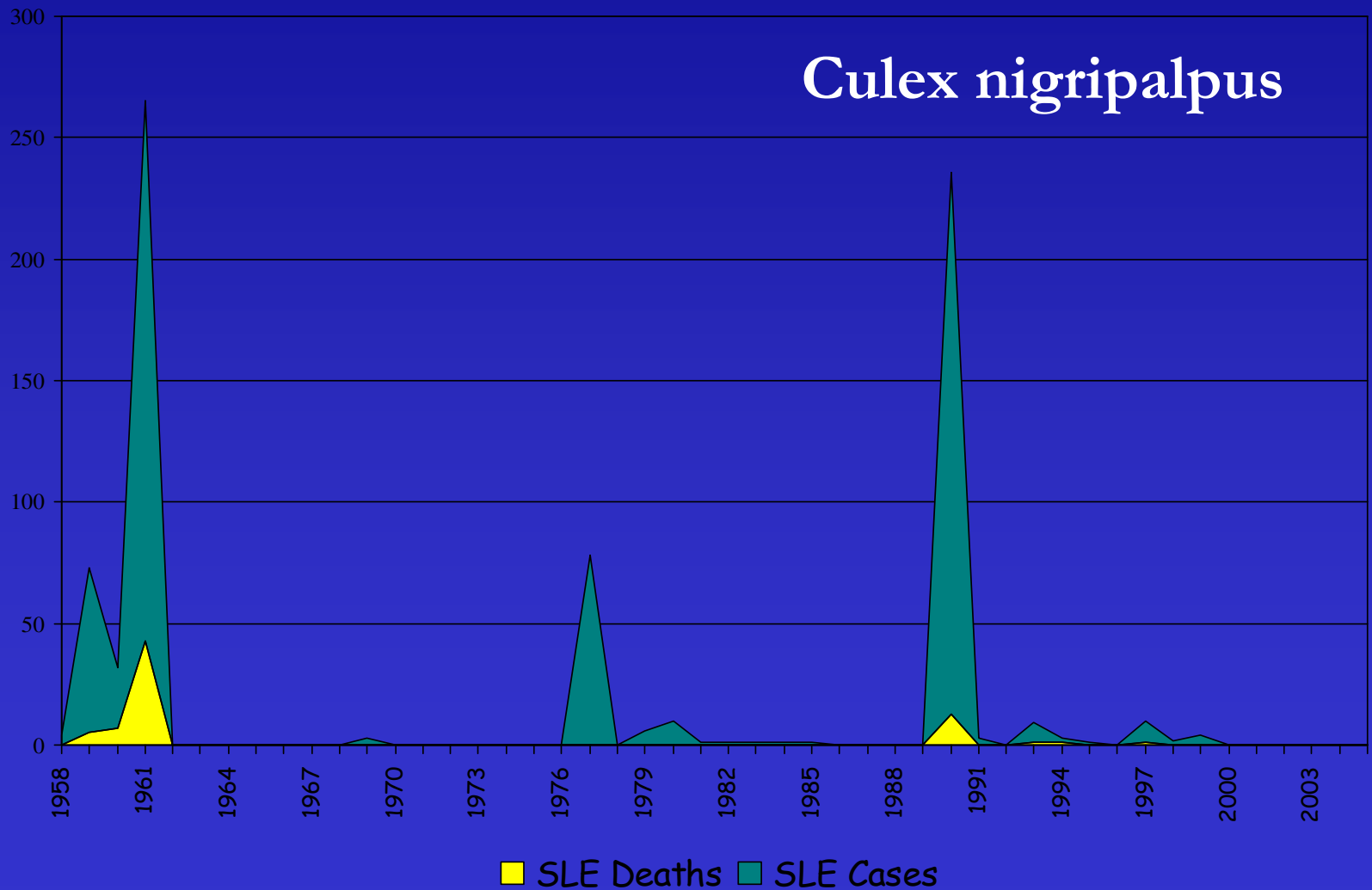
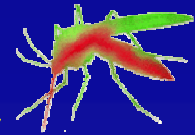
**Lillian Stark, PhD, MS, MPH**

Florida Department of Health










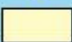
**William Jeter, DVM**

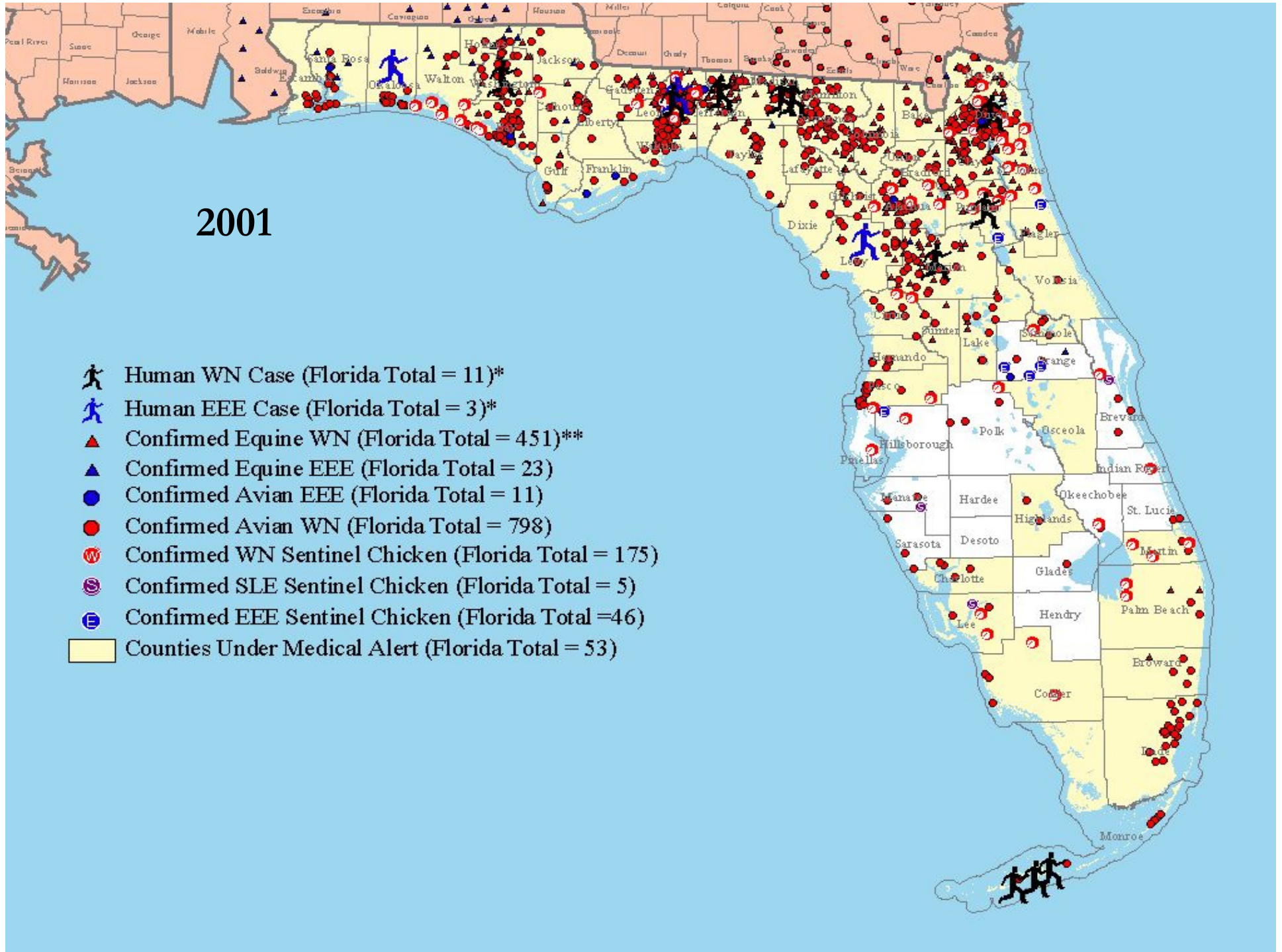
Florida Department of Agriculture and  
Consumer Services

# SLE in Florida, 1958-2005

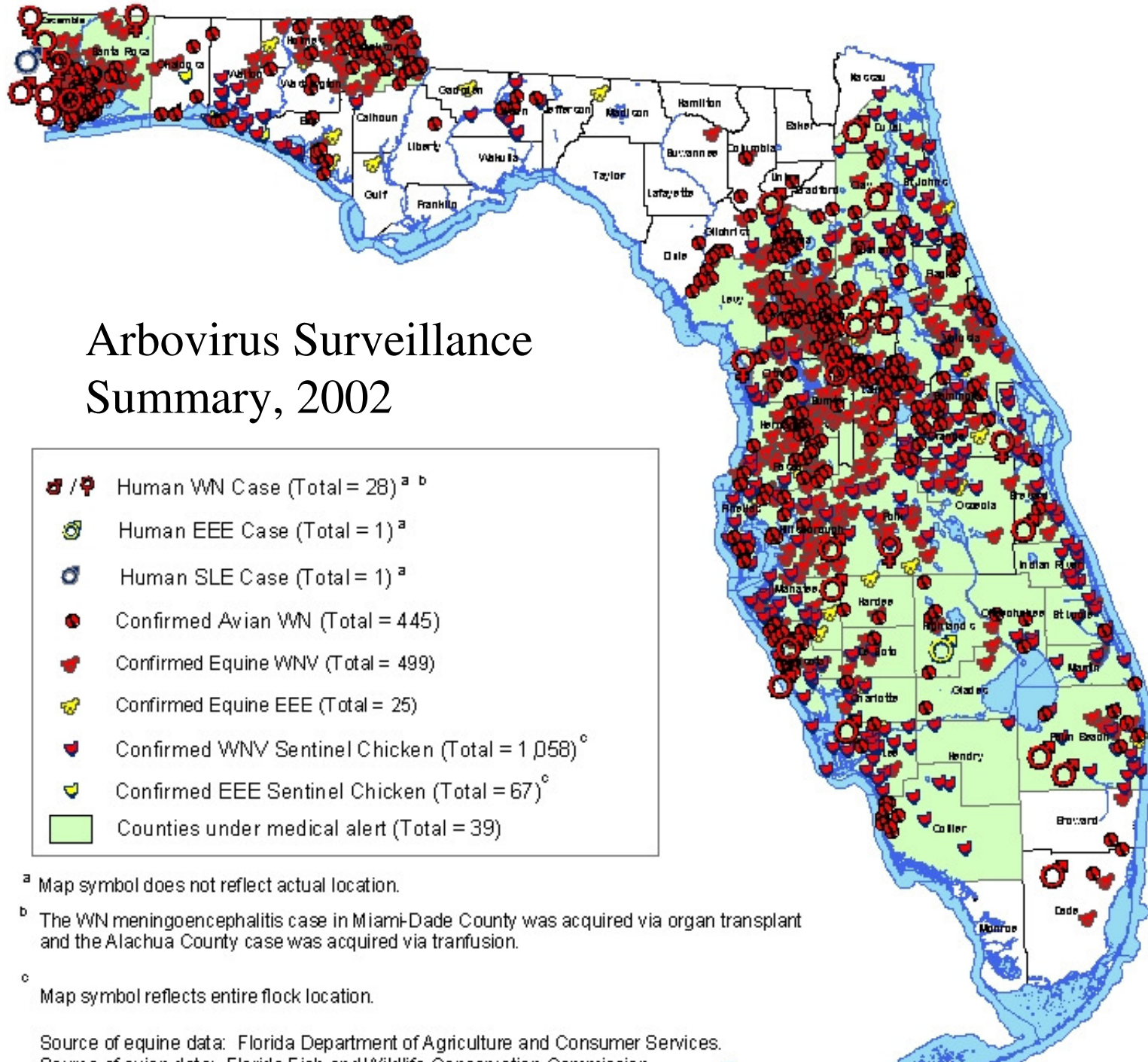


2001

-  Human WN Case (Florida Total = 11)\*
-  Human EEE Case (Florida Total = 3)\*
-  Confirmed Equine WN (Florida Total = 451)\*\*
-  Confirmed Equine EEE (Florida Total = 23)
-  Confirmed Avian EEE (Florida Total = 11)
-  Confirmed Avian WN (Florida Total = 798)
-  Confirmed WN Sentinel Chicken (Florida Total = 175)
-  Confirmed SLE Sentinel Chicken (Florida Total = 5)
-  Confirmed EEE Sentinel Chicken (Florida Total = 46)
-  Counties Under Medical Alert (Florida Total = 53)









# Florida Comprehensive WNV Surveillance

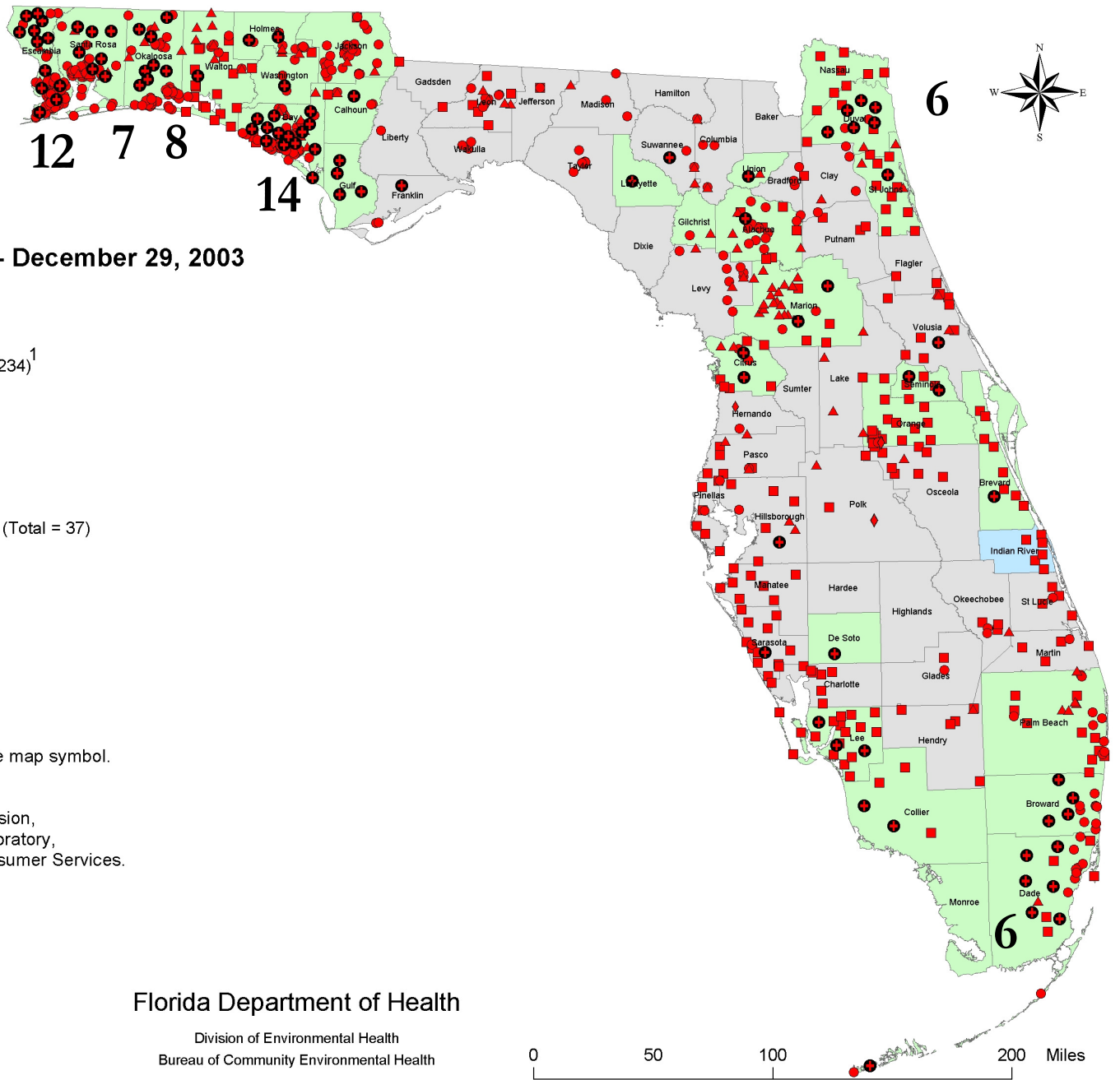
Data Collected January 1, 2003 - December 29, 2003

- Confirmed Human WNV (Total = 89)<sup>2</sup>
- Confirmed Avian WNE (Total = 487)<sup>1</sup>
- Confirmed Sentinel Chicken WNV (Total = 1234)<sup>1</sup>
- ▲ Confirmed Equine WNE (Total = 117)<sup>1</sup>
- ◆ Confirmed Other WNE (Total = 3)<sup>1</sup>
- Counties under medical alert (Total = 29)
- Counties under medical advisory (Total = 1)
- Counties not under medical alert or advisory (Total = 37)

<sup>1</sup> Geographic cluster may only appear as a single map symbol.  
<sup>2</sup> Does not represent actual location.  
 Sources of data: Florida Department of Health, Florida Fish and Wildlife Conservation Commission, County Health Department, Tampa Branch Laboratory, and Florida Department of Agriculture and Consumer Services.

WNV = West Nile Virus  
 WNE = West Nile Encephalitis

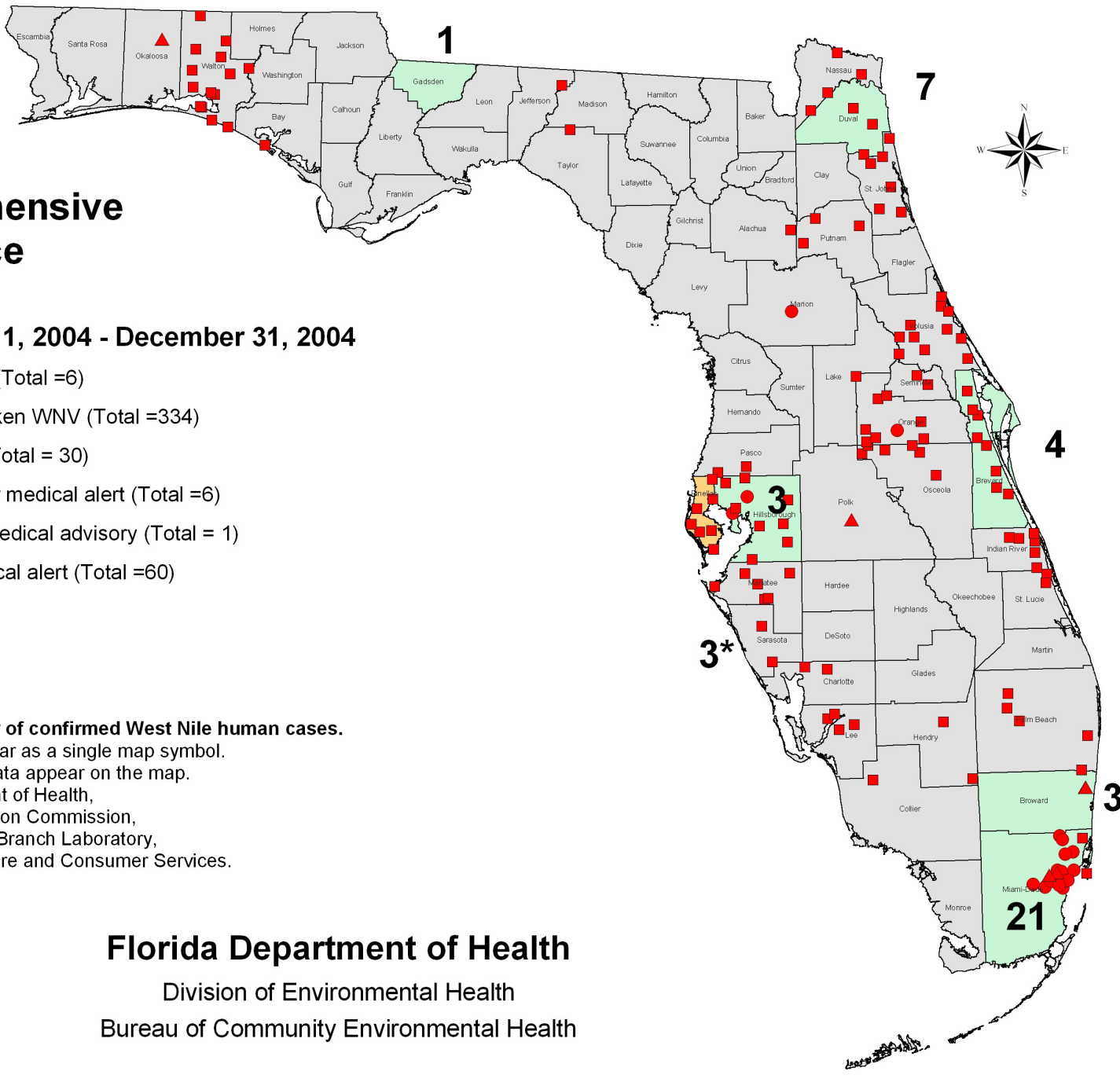
Disclaimer:  
 This product is for reference purposes only and is not to be construed as a legal document. Any reliance on the information contained herein is at the user's own risk. The Florida Department of Health and its agents assume no responsibility for any use of the information contained herein or any loss resulting there from.  
 Map printed January 8, 2003



Florida Department of Health

Division of Environmental Health  
 Bureau of Community Environmental Health

0 50 100 200 Miles



# Florida Comprehensive WNV Surveillance

Data Collected January 1, 2004 - December 31, 2004

- ▲ Confirmed Equine WNE (Total =6)
- Confirmed Sentinel Chicken WNV (Total =334)
- Confirmed Avian WNE (Total = 30)
- Counties that were under medical alert (Total =6)
- County that was under medical advisory (Total = 1)
- Counties not under medical alert (Total =60)

**Bold numeral represents number of confirmed West Nile human cases.**

Geographic clusters may only appear as a single map symbol.

Only cases with valid geographic data appear on the map.

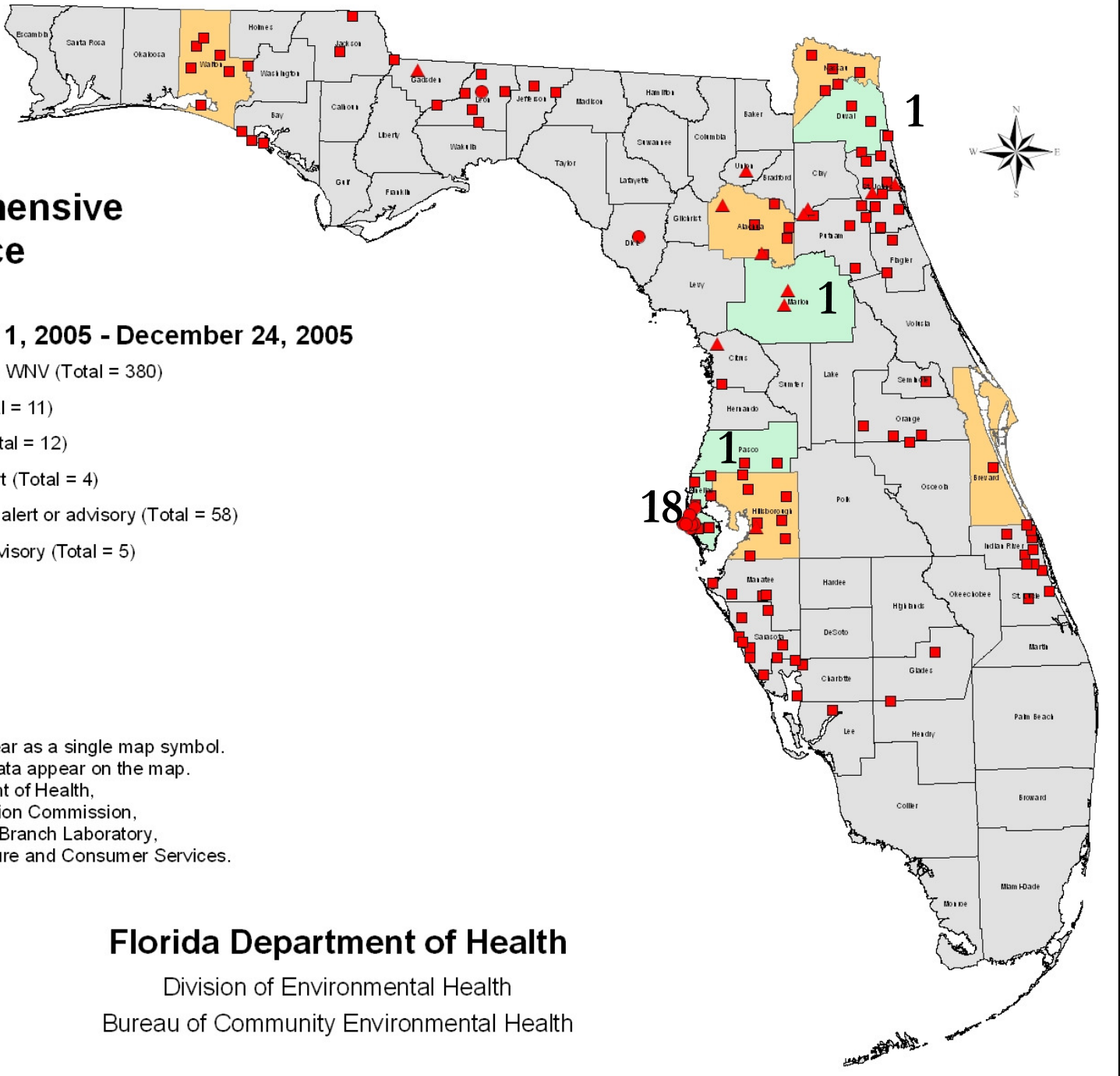
Sources of data: Florida Department of Health, Florida Fish and Wildlife Conservation Commission, County Health Department, Tampa Branch Laboratory, and Florida Department of Agriculture and Consumer Services.

WNV = West Nile Virus  
 WNE = West Nile Encephalitis  
 \*Cases with travel history

Disclaimer:  
 This product is for reference purposes only and is not to be construed as a legal document. Any reliance on the information contained herein is at the user's own risk. The Florida Department of Health and its agents assume no responsibility for any use of the information contained herein or any loss resulting there from.  
 Map printed January 6, 2004.

**Florida Department of Health**  
 Division of Environmental Health  
 Bureau of Community Environmental Health





# Florida Comprehensive WNV Surveillance

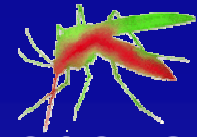
Data Collected January 1, 2005 - December 24, 2005

- Confirmed Sentinel Chicken WNV (Total = 380)
- Confirmed Avian WNE (Total = 11)
- ▲ Confirmed Equine WNV (Total = 12)
- Counties under medical alert (Total = 4)
- Counties not under medical alert or advisory (Total = 58)
- Counties under medical advisory (Total = 5)

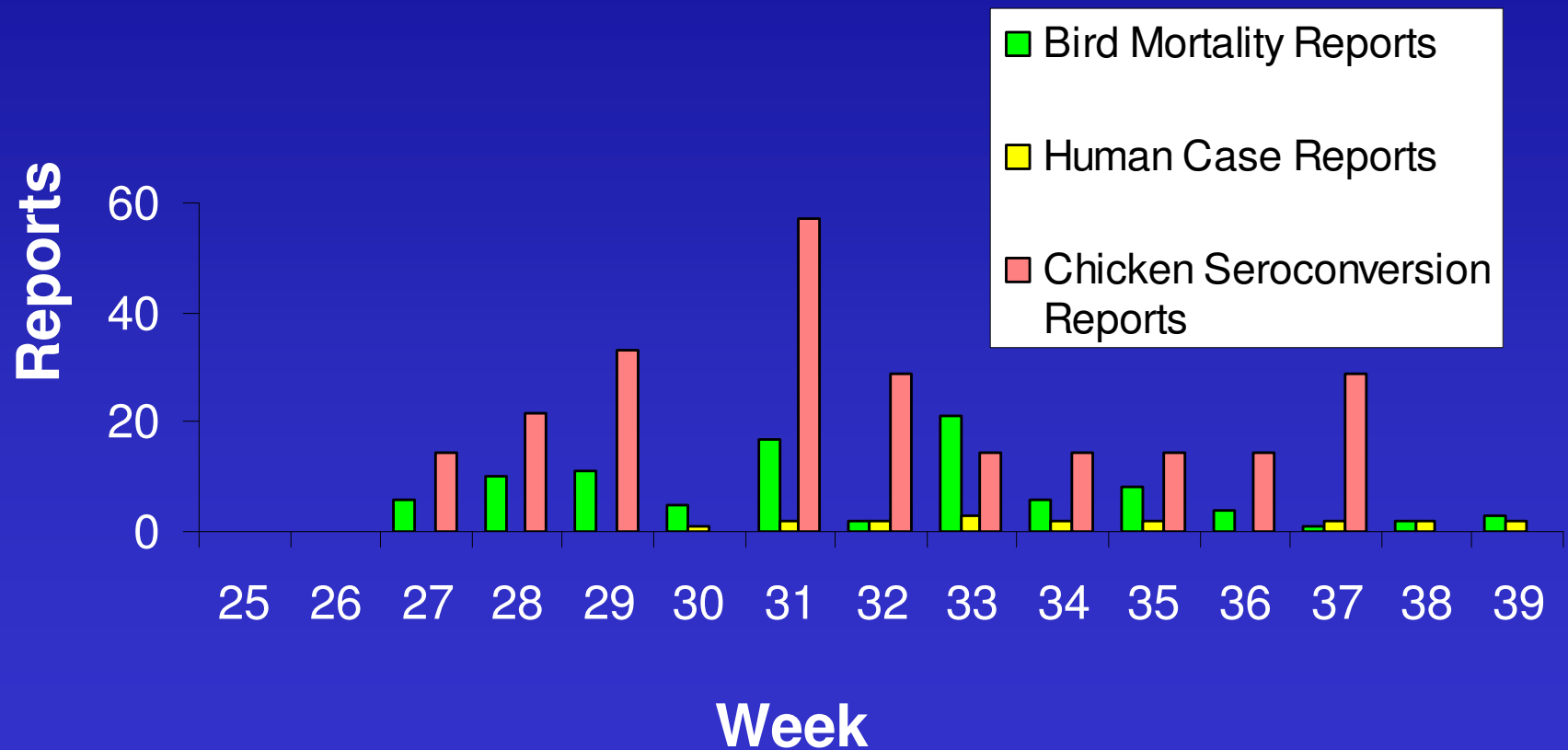
Geographic clusters may only appear as a single map symbol.  
 Only cases with valid geographic data appear on the map.  
 Sources of data: Florida Department of Health,  
 Florida Fish and Wildlife Conservation Commission,  
 County Health Department, Tampa Branch Laboratory,  
 and Florida Department of Agriculture and Consumer Services.  
 WNV = West Nile Virus  
 WNE = West Nile Encephalitis

Disclaimer:  
 This product is for reference purposes only  
 and is not to be construed as a legal  
 document. Any reliance on the information  
 contained herein is at the user's own risk.  
 The Florida Department of Health and its  
 agents assume no responsibility for any  
 use of the information contained herein  
 or any loss resulting there from.  
 Map printed January 3, 2006.

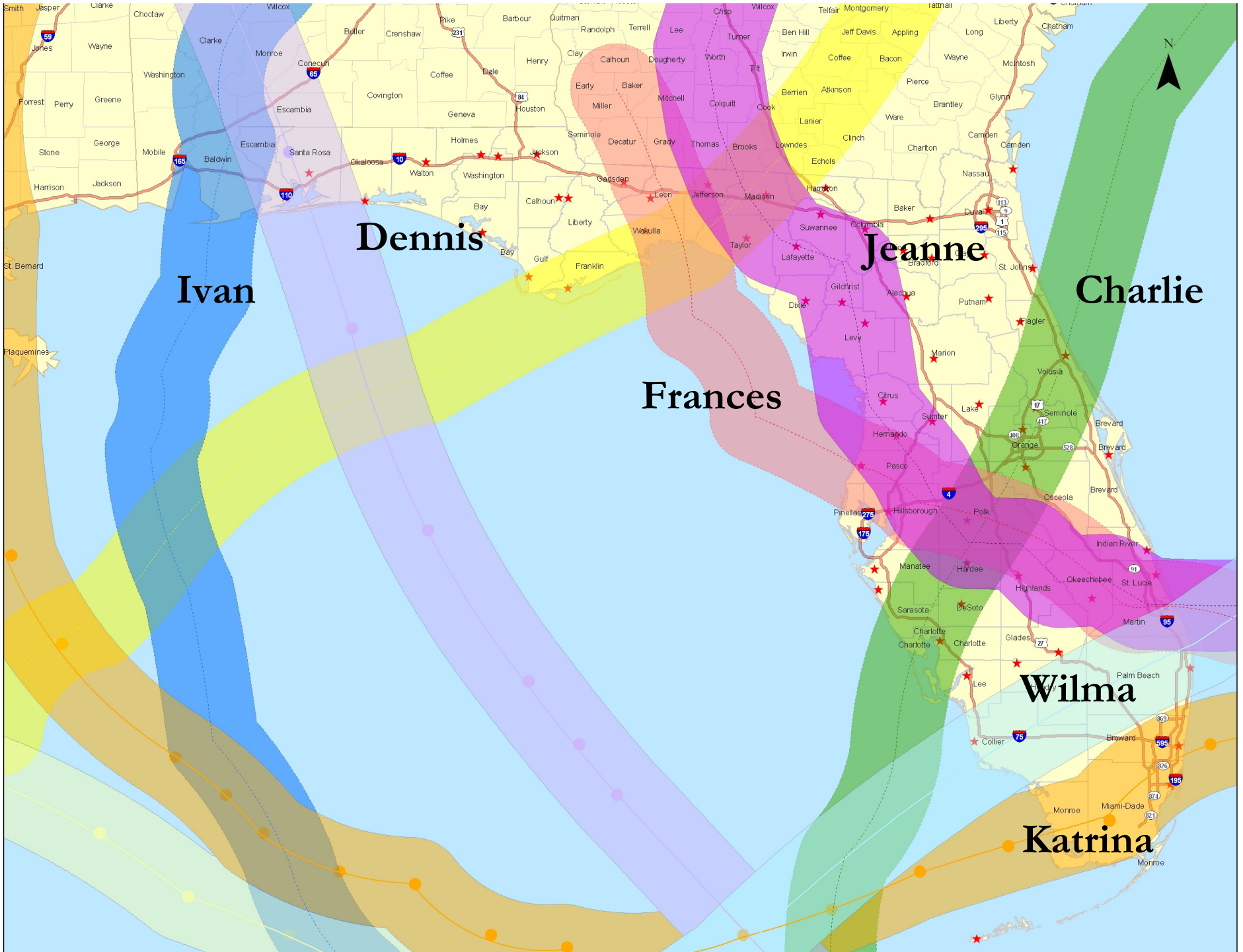
**Florida Department of Health**  
 Division of Environmental Health  
 Bureau of Community Environmental Health



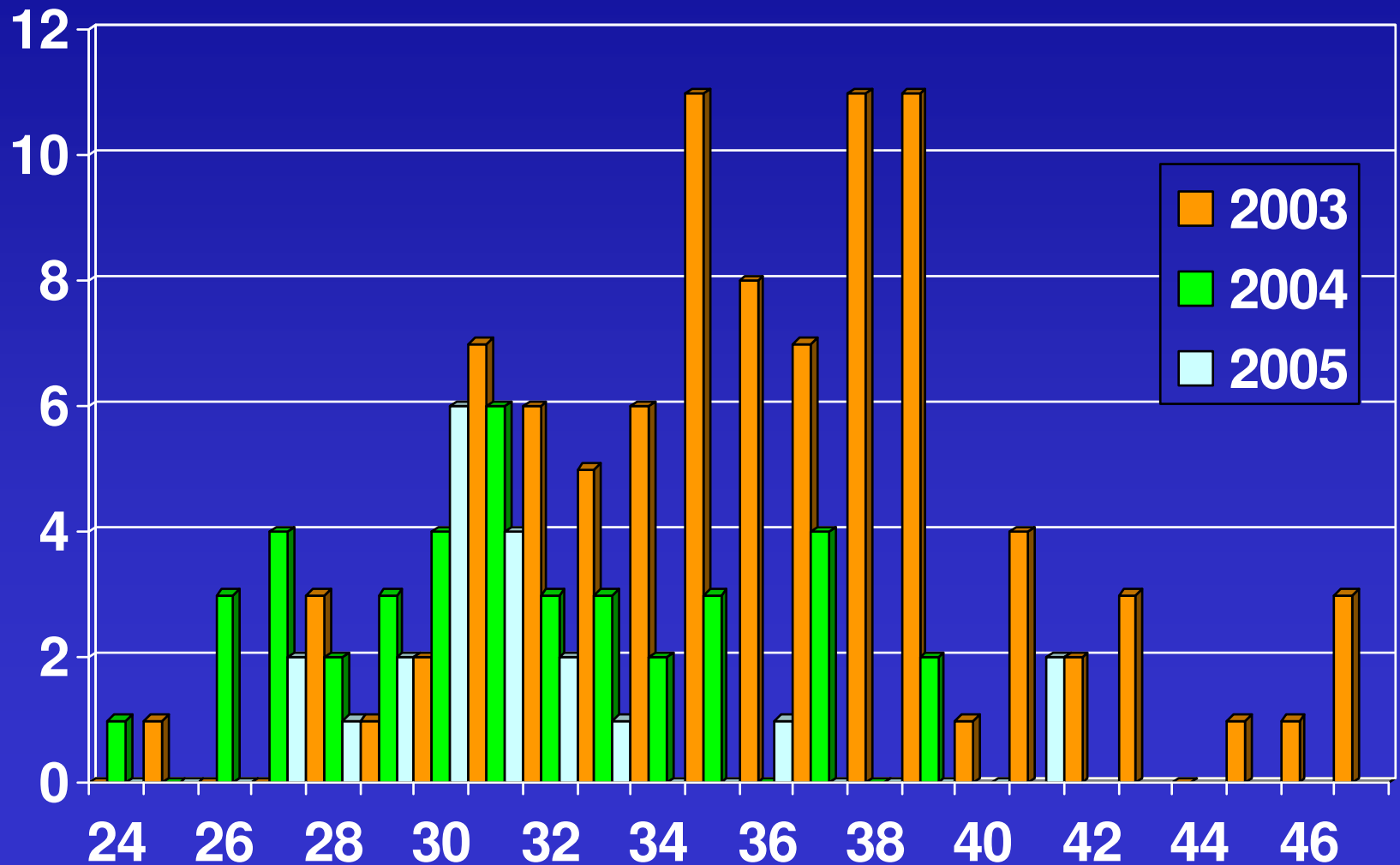
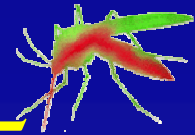
## Report Dates for Bird Mortality, Human Cases, and Chicken Seroconversions, Pinellas County, 2005



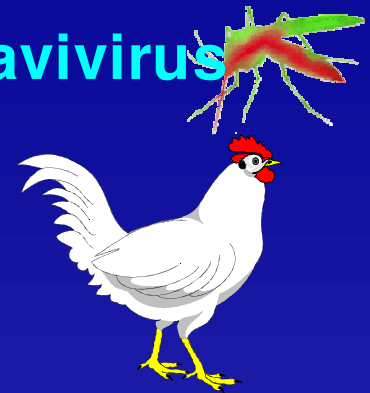
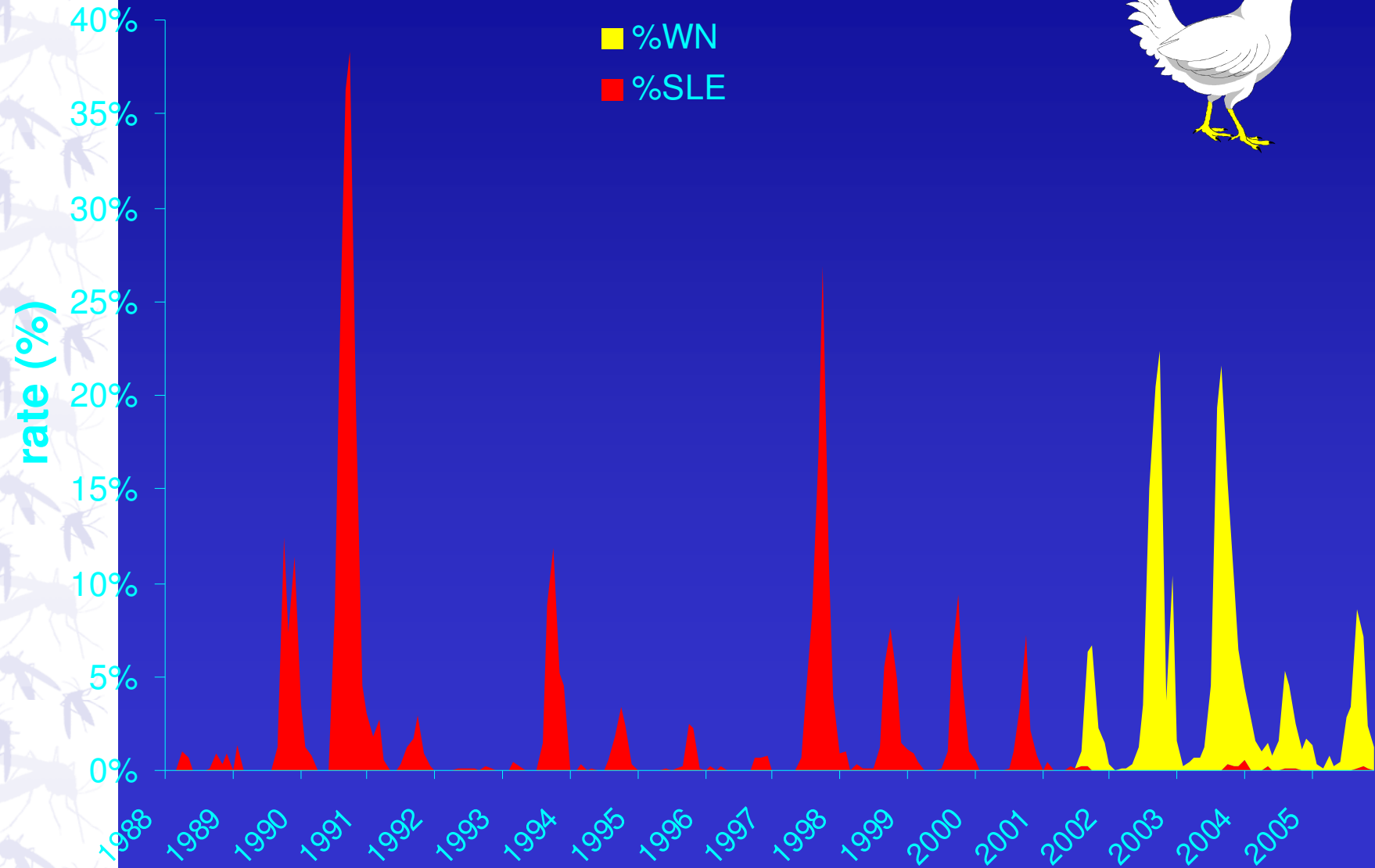


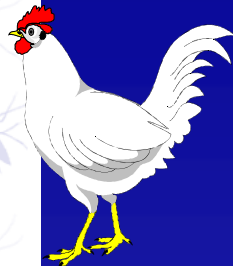


# West Nile cases 2003-2005

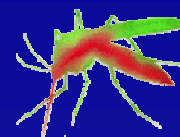


# Sentinel Chicken Seroconversions to Flavivirus 1988-2005



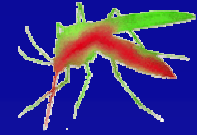


# Sentinel Results



	2005	2004	2003	2002	2001	2000
<b>sites</b>	279	281	289	230	204	181
<b>Birds</b>	3801	3258	4,361	3,356	2,128	1,675
<b>Sera</b>	47,535	47,104	44,434	31,945	23,565	18,026
<b>SLE+</b>	5	12	11	0	7	144
<b>WN +</b>	414	352	1,346	1,102	202	0

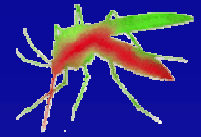




# Mosquito surveillance

	MIR
<i>Culex nigripalpus</i>	2.2-175.2
<i>Culex quinquefasciatus</i>	1.1-21.3
<i>Culex salinarius</i>	0.8-1.7
<i>Culiseta melanura</i>	1.7
<i>Oc. taeniorhynchus</i>	25-33

# Questions?



Get Out of the Zap Zone

