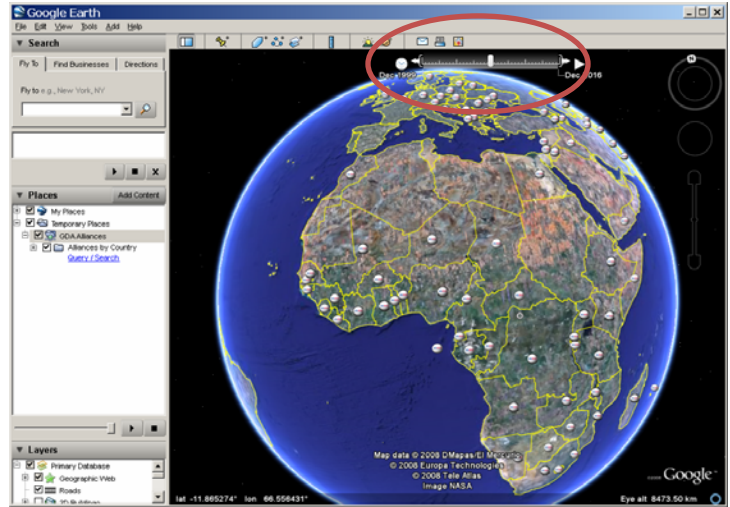


Instructions for mapping USAID's Global Development Alliances

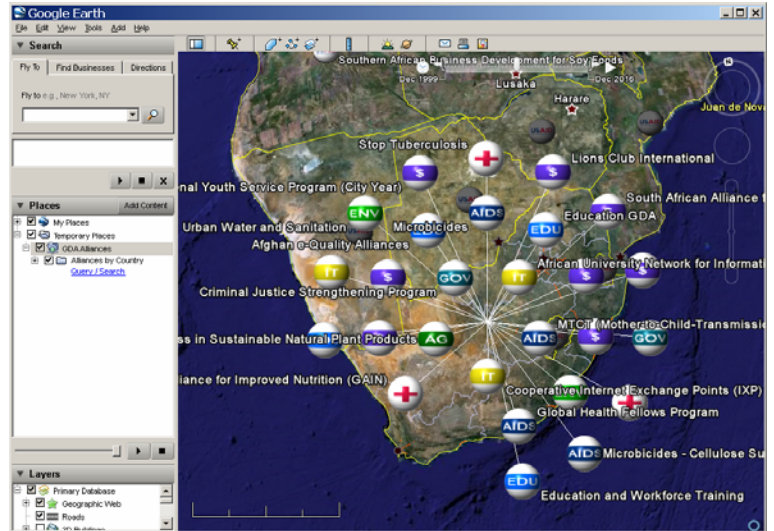
This mapping application works best with GoogleEarth™ - please click here to download. (link: <http://earth.google.com/>)

1. Click on the GoogleEarth image on the [Global Development Alliance](#) webpage. (GoogleEarth™ will automatically launch on your computer.)

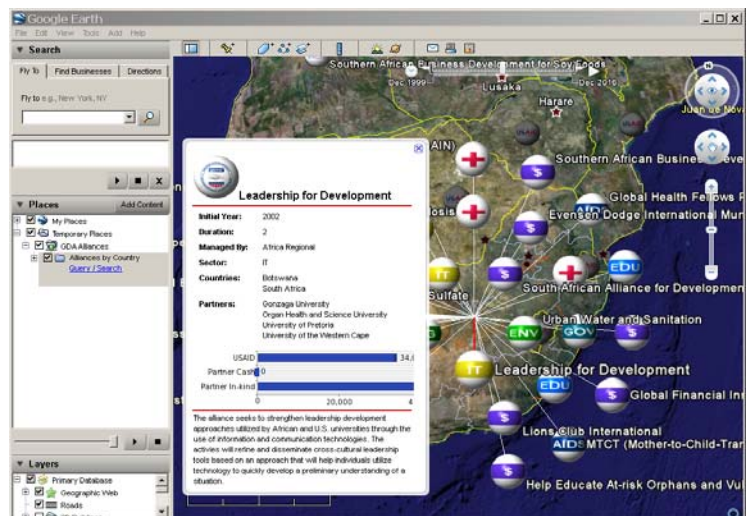
To view all alliances, open the time slider which is circled in the upper right corner. The USAID icons on the map, indicate if a country has Global Development Alliances.



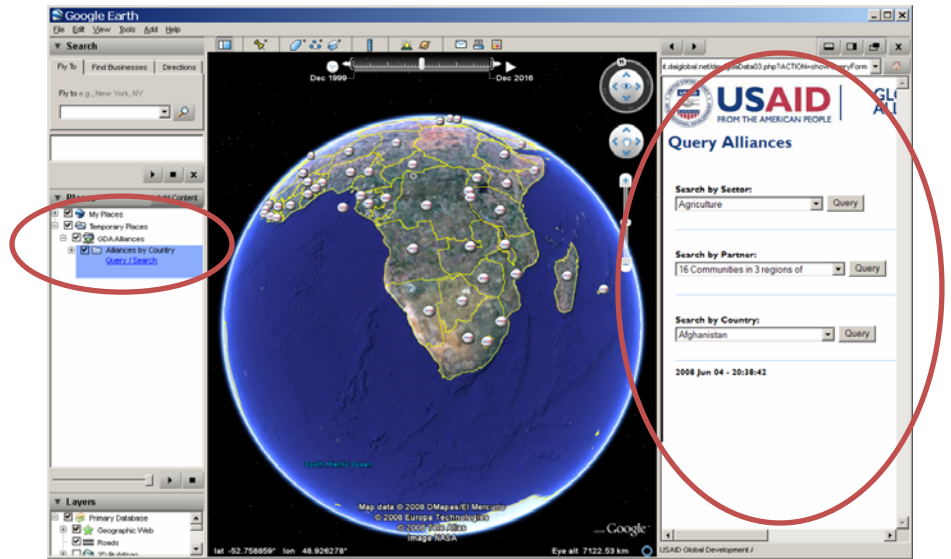
2. Click on the USAID icon to show all the Global Development Alliances in a given country. The icons are colored according to sector.



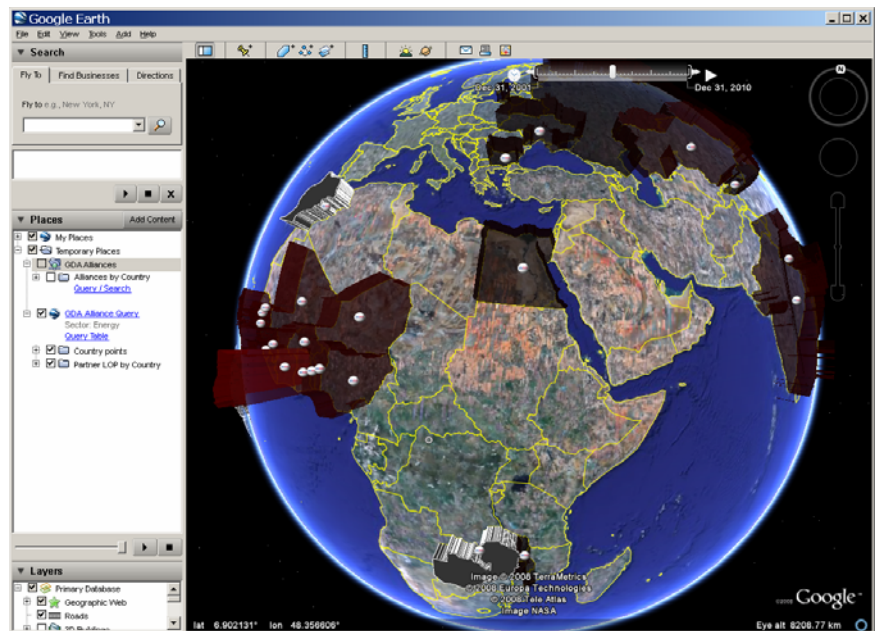
3. Click on an icon to see the full details of the Global Development Alliance.



- Click on the Query/Search link to open the query options. You can search by sector and country.



- For example, by selecting “Energy”, you will produce a new layer that will highlight the amount of money invested in Global Development Alliances in the energy sector per country.



- You could also choose to view “Energy” Alliances in a table format by clicking on the “GDA Alliances Query” link.

