

Livestock and Poultry Environmental Learning Center



Today's Topics

- Learning Center Overview
- Introduction to our issue teams that will be part of our eXtension platform
- Share an early viewing of the Febraury webcast



Financial Support

USDA CSREES 406

Integrated Water Quality Program -
national facilitation program (2006)



Livestock and Poultry Environmental Learning Center

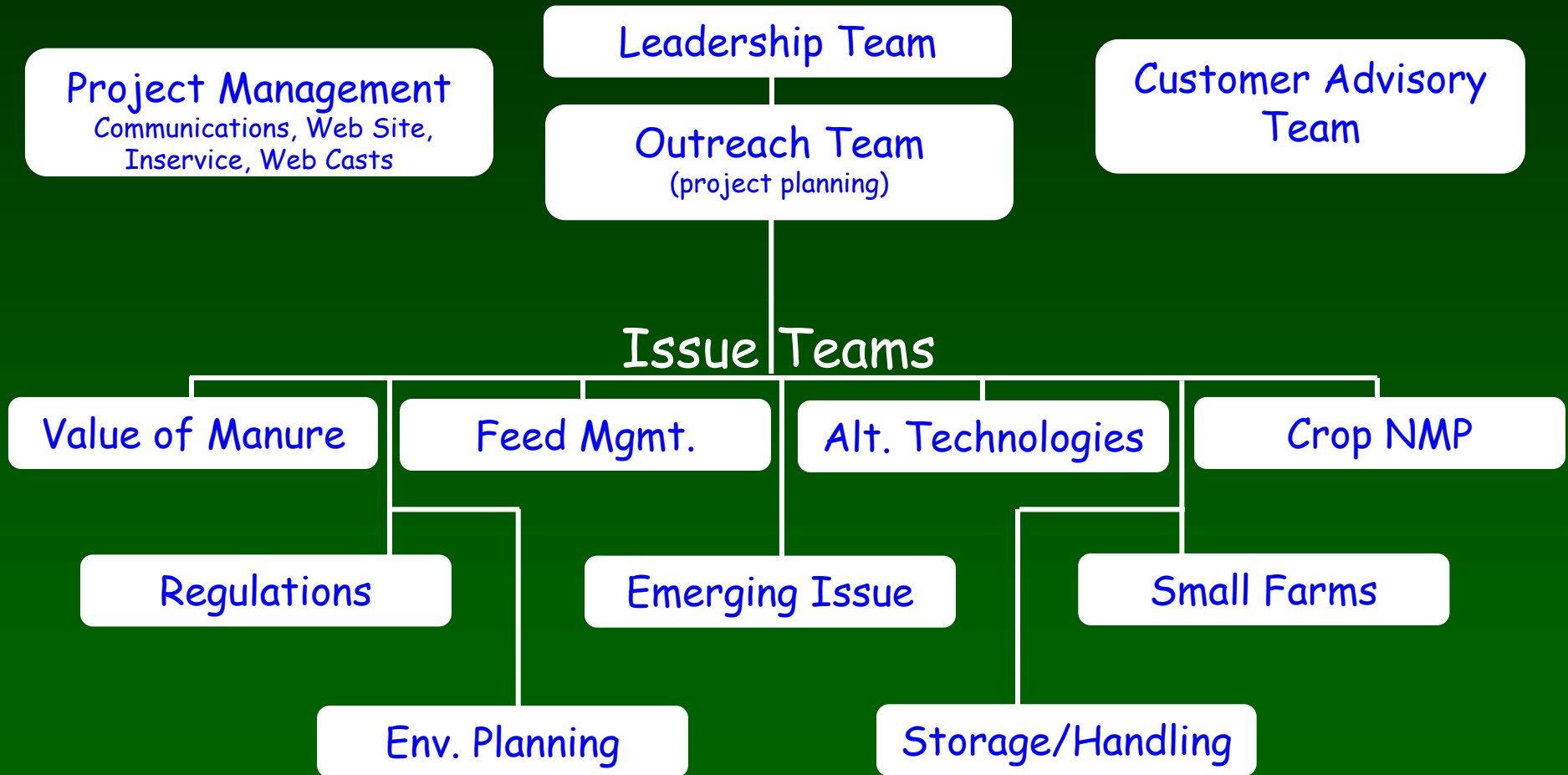


Who is Our Customer?

- Individuals and organizations that influence animal producer decisions.



Our Organization - LPE Learning Center



Livestock and Poultry Environmental Learning Center



Customer Advisory Team

NCBA, NMPF, US Poultry and Egg Assoc., American Farm Bureau, USDA NRCS and ARS, ASWIPCA, NACAA, National Ag Library, US EPA, NASDA, ICCA.

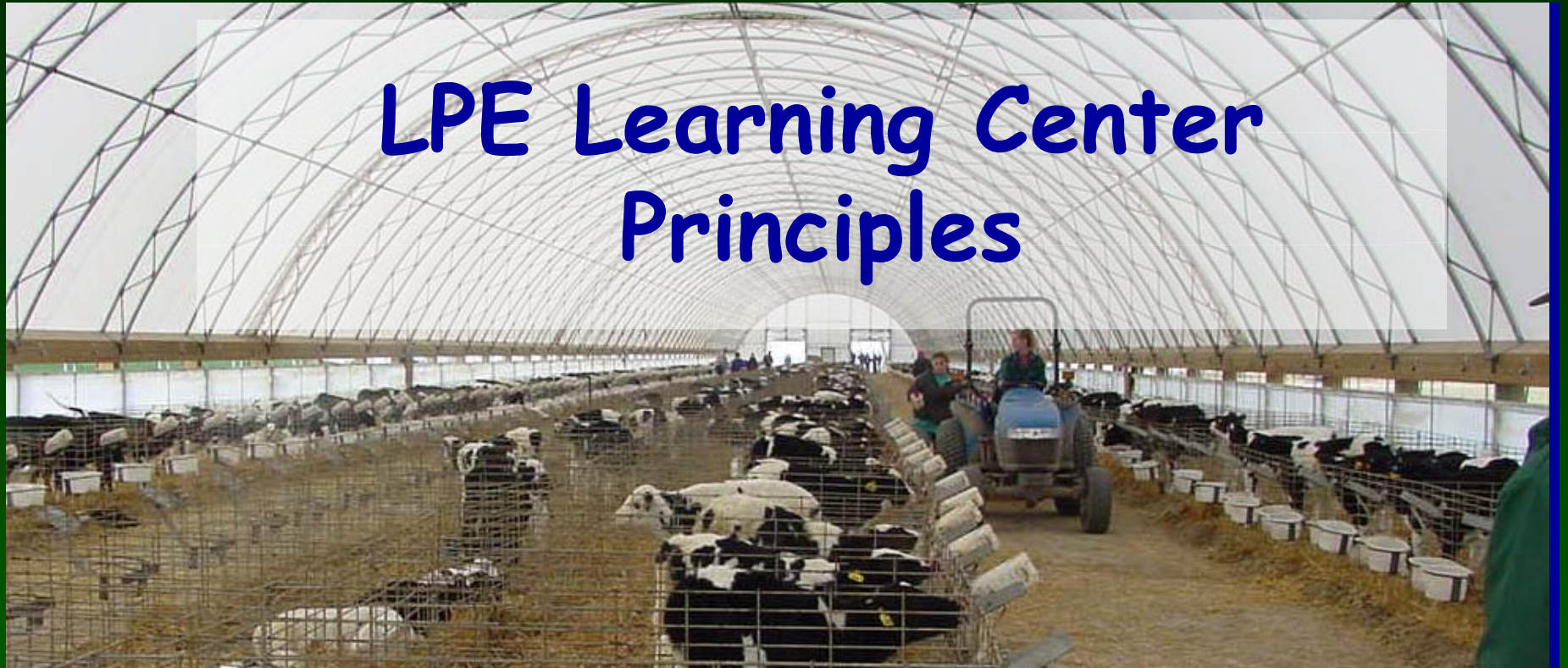
Chair: Don Parish - Am Farm Bureau



Livestock and Poultry Environmental Learning Center



LPE Learning Center Principles



- Connect national experts with those assisting producers
- On-demand access to our best science



LPE Learning Center Outreach Team Values



- National collaboration - working together, we add value to what we do individually.
- Stakeholders - We value the research & outreach of our non-land grant partners
- Inclusive - Others in our field can contribute to a shared knowledge and outreach
- Technology - emerging web resources provide a unique connection to our customers



Livestock & Poultry Environmental Learning Center

National Livestock and Poultry Environmental Learning Center

Connecting Experts With Those Assisting Producers



[Home](#)

[About the Center](#)

[Project Team](#)

[Subscribe to Newsletter](#)

[What's New?](#) | [Webcast Series](#) | [Newsletter](#)

LPELC Topics

[Alternative Technology](#)
[Nutrients](#)
[Pathogens](#)
[Value of Manure](#)

National Resources

[Education](#)
[Regulatory/Policy](#)
[Research](#)
[Technical Assistance](#)
[Financial Assistance](#)
[CSREES Water Quality](#)

Continuing Education Units

Webcast Series

[Upcoming Webcasts](#)
[How Do I Participate?](#)
[Archived Webcasts](#)
[Troubleshooting](#)

Newsletter

What's New?

September newsletter Available-Stories include:

- Matching Treatment Systems with the Environmental Concern is October's Webcast Topic
- Help us Find the "Best of the Best"
- Have You Missed Out on Past Webcasts Because of Technical Difficulties?
- LPE Learning Center Opens Door for Air Quality Education
- New Webcast Schedule Includes a Wide Variety of Topics

[View current newsletter](#) | [Subscribe to Newsletter](#) | [Additional information on the October webcast](#) (September 5)

November Webcast Will Pilot Test a New Way to Access the Series -if you have missed out on webcasts in the past because of technical difficulties or wished that you didn't need to download special software to view them--mark your calendars to try out our new system for the November 16, 2007 webcast "Vegetative Treatment Systems for Barnyard and Open Lot Runoff". The webcast will be available via your web browser using Breeze meeting technology. Your feedback on this broadcast will determine if the new system becomes permanent. More information will be released over the next few weeks. (September 5)

Webcast Schedule Released-the tentative webcast schedule for the remainder of 2007 and for 2008 has been released and is sure to include topics of interest to a wide variety of our audience. Thank you to everyone who offered feedback! [View webcast schedule](#) | [Printer friendly version](#) (September 1)

August Newsletter Available- Stories include:

- Webcast Series Resumes with "Value of Manure in Energy Production"
- Webcast Schedule Coming Soon

Livestoc

National Web Presence for AMM Issues

- Why? Customer wants on-demand access to information.
- Goal - Develop "Content Rich" Animal Manure Management web site
- Process
 - Transition web resource to eXtension
 - Assemble national content work groups



Staying in Touch...

National Livestock and Poultry Environmental Learning Center

LPE Center News



September, 2007

Connecting Experts With Those Advising Producers

<http://lpe.unl.edu>

In this issue:

- *Matching Treatment Systems with the Environmental Concern is October's Webcast Topic*.....1
- *Help Us Find the "Best of the Best".1*
- *Have You Missed Out on Past Webcasts Because of Technical Difficulties?*1
- *LPE Learning Center Opens Doors for Air Quality Education..2*
- *New Webcast Schedule Includes a Wide Variety of Topics*.....2

September Webcast

LPE Learning Center Webcast Series

Matching Treatment Systems with the Environmental Concern is October's Webcast Topic

Manure handling and treatment systems can be thought of as a jigsaw puzzle—only this jigsaw puzzle has more than one correct configuration. Because each farm operates under unique conditions and environmental challenges, it is important to take time to understand the advantages (and disadvantages) of each technology and how it fits into the overall system. By doing so it is possible to fit the pieces together in a way that minimizes the environmental impact of an operation.



Robert Burns, Iowa State University will present the October installment of the LPE Learning Center webcast series "Overview of Alternative Treatment Technologies—Matching the Treatment to the Environmental Concern". For more information go to:

<http://lpe.unl.edu/pdfs/07octflyer.pdf>.

Date/time: Friday, October 19, 2007 at 2:30 pm (eastern); 1:30 pm (central); 12:30 pm (mountain) and 11:30 am (pacific).

How to participate: Software requirements and instructions for participating in the live webcast can be found at <http://lpe.unl.edu/webcast2.html>.



Staying in Touch...

National Livestock and Poultry Environmental Learning Center

LPE Center News



September, 2007

Connecting Experts With Those Advising Producers

<http://lpe.unl.edu>

In this issue:

LPE Learning Center Webcast Series

- Matching Treatment Systems with the Environmental Concerns of October 2007
Topic: ...

Matching Treatment Systems with the Environmental

About 1,000 subscriptions to newsletter

- Help Us Find "Best Practices" ...
- Have You Missed Out on Past Webcasts? ... of Technical Difficulties ...
- LPE Learning Center Doors Open to Quality ...

minimizes the environmental impact of an operation.

Subscribe to Newsletter...
<http://lpe.unl.edu/>

- New Webcast Schedule Includes a Wide Variety of Topics.....2

Date/time: Friday, October 19, 2007 at 2:30 pm (eastern); 1:30 pm (central); 12:30 pm (mountain) and 11:30 am (pacific).

How to participate: Software requirements and instructions for participating in the live webcast can be found at <http://lpe.unl.edu/webcast2.html>.

September Webcast



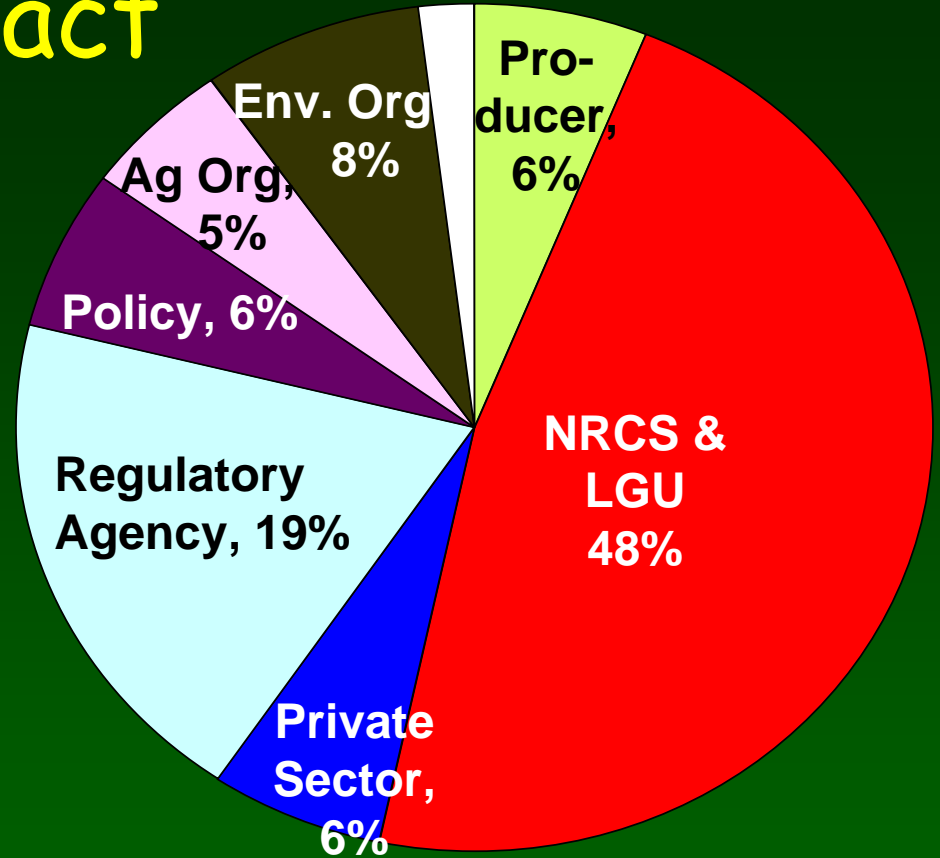
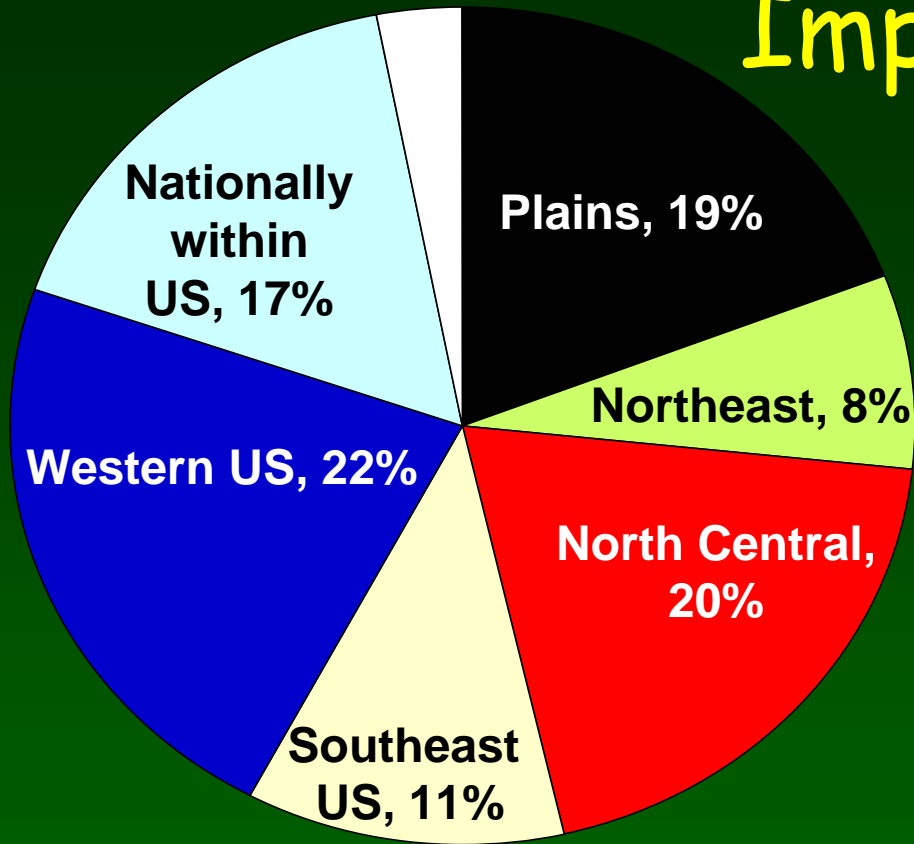
Web Cast Seminar Series

- Why? We connect our audience to national experts on national policy, research, an environmental stewardship topics
- 3rd Friday of the month, 1:30 pm Central time

Livestock and Poultry Environmental Learning Center



Impact



November '06 web cast on Pathogen Issues

Attended live by about 240 people.

Accessed in archived form by 850 people

Livestock and Poultry Environmental Learning Center



Web Cast Seminar Series

Archived Presentations...

- CNMP Development Curriculum
- CAFO Rule Proposed Changes
- Pathogens
- Integrated Nutrient Issues
- Value of Manure
- Alternative Technologies



Certified Crop Advisor's CEUs available for web casts

Address  <http://www.agronomy.org/cca/>

Certified Crop Adviser

American Society of Agronomy



<http://www.agronomy.org/cca/>

- [Log In](#)
- [Renew My Certification](#)
- [Forgot My Password](#)
- [Check CEU's](#)
- [View/Update My Address](#)

[Home](#)

[Ag Professional and CCA Advantage](#)

[Self Study CEU's](#)

[Check Credential Status](#)

[CCA Directory: Find A CCA](#)



CCA & ARPAS Continuing Education

National Livestock and Poultry Environmental Learning Center

Connecting Experts With Those Assisting Producers



[Home](#)

[About the Center](#)

[Project Team](#)

[Subscribe to Newsletter](#)

LPELC Topics

[Nutrients](#)

[Pathogens](#)

National Resources

[Education](#)

[Regulatory/Policy](#)

[Research](#)

[Technical Assistance](#)

[Financial Assistance](#)

[CSREES Water Quality](#)

Continuing Education Units

Webcast Series

[Upcoming Webcasts](#)

[How Do I Participate?](#)

[Archived Webcasts](#)

[Troubleshooting](#)

Newsletter

Continuing Education Units

[Certified Crop Advisers \(CCA\)](#) | [American Registry of Professional Animal Scientists \(ARPAS\)](#)

Certified Crop Advisers

Several LPE Learning Center webcasts have been approved for continuing education units as part of the American Society of Agronomy's Certified Crop Adviser Program. To receive credits, view a live or [archived](#) webcast, and complete the quiz (available through the CCA website). The CCA program charges \$12 for each CEU obtained through self-study.

Webcasts approved for 1 CEU each in Nutrient Management:

"Nitrogen Management from Organic Sources" (March 16, 2007) [Archive](#) | [Quiz](#) (no quiz available)

"Management of Legumes" (February 16, 2007) [Archive](#) | [Quiz](#)

"Nutrient Management and Limits of the P Index" (January 19, 2007) [Archive](#) | [Quiz](#)

Webcasts approved for 1 CEU each in Soil & Water Management:

"Pathogens in Animal Manure (Part 2)" (December 15, 2006) [Archive](#) | [Quiz](#)

"Pathogens in Animal Manure (Part 1)" (November 17, 2006) [Archive](#) | [Quiz](#)

ARPAS

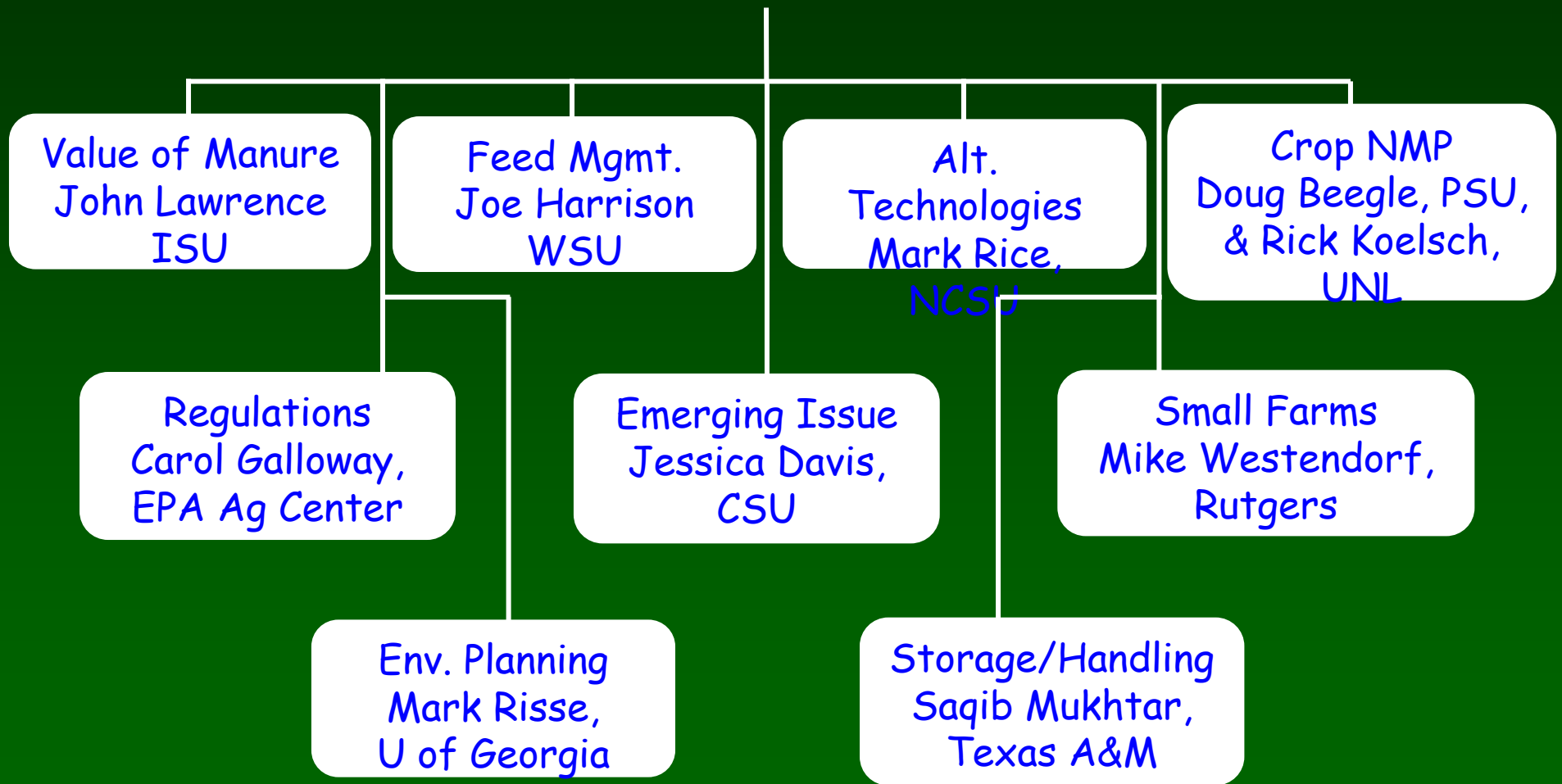
Several webcasts have been approved for continuing education units as part of the American Registry of Professional Animal Scientists (ARPAS) program. To receive credits, view a live or archived webcast, complete an evaluation, and contact Lisa Hamilton at [ARPAS](#), 217-356-5390 to have the credit applied to your CEU balance.

CEU Info

CCA Quiz

ARPAS CEUs

Issue Work Groups - Essential to Creating Content Rich Product



Fitting eXtension to LPELC?



Ask the Expert
and FAQs

What is LPELC
Passionate About?



Breeze
Workshops

Connect National
Experts with
Customers

What are
better
at than
everyone else?

What do
our
customers
want?



Wikis



Events
Calendar

Livestock and Poultry Environmental Learning Center



Fitting eXtension to LPELC?



Ask the Expert
and FAQs

What is LPELC
Passionate About?



Breeze
Workshops

Connect National
Experts with
Customers

What are
better
at than
everyone else?

What do
our
customers
want?



Wikis



Events
Calendar

Livestock and Poultry Environmental Learning Center



Fitting eXtension to LPELC?



Ask the Expert
and FAQs

What is LPELC
Passionate About?



Breeze
Workshops

On-Demand
Access to our
Best Science

What are
better
at than
everyone else?

What do
our
customers
want?



Wikis



Events
Calendar

Livestock and Poultry Environmental Learning Center



Need for new tools in tool box



What is LPELC
Passionate About?

Connect to Experts

Access to Science

What are
better
at than
everyone else?

What do
our
customers
want?



Livestock and Poultry Environmental Learning Center



Thank you



Livestock and Poultry
Environmental Learning Center



Livestock and Poultry Environmental Learning Center



What would this AMM web presence include?

Existing

- LPE Learning Center resources

New

- "Best of the Best" resources
- Frequently Asked Questions
- Ask the Expert option (after transition to eXtension)



eXtension MISSION

eXtension is an internet based educational partnership of the 74 LG institutions that helps people improve their lives by providing access to objective research based information and learning opportunities

