

**AUCTION SUMMARY**

<a href="http://www.ams.usda.gov/mnreports/jc_ls763.txt">http://www.ams.usda.gov/mnreports/jc_ls763.txt</a>			6,500 hd	Tuesday
<b>OZARKS REGIONAL STOCKYARD</b> West Plains, MO				
Feeder Steers	400-500 lbs	110.50-127.00	Feeder Heifers	400-500 lbs 94.00-105.00
Medium &	500-600 lbs	110.50-127.00	Medium &	500-600 lbs 87.00-95.00
Large #1	600-700 lbs	110.00-118.00	Large #1	600-700 lbs 85.00-93.00
	700-800 lbs	92.50-103.50		700-800 lbs pkg 88.00
	800-900 lbs	85.00-94.50		800-900 lbs 85.00-86.00

<a href="http://www.ams.usda.gov/mnreports/sf_ls759.txt">http://www.ams.usda.gov/mnreports/sf_ls759.txt</a>			4,161 hd	Tuesday
<b>PHILIP LIVESTOCK AUCTION</b> Philip, SD				
Feeder Steers	400-500 lbs	118.00-120.00	Feeder Heifers	400-500 lbs 100.00-104.50
Medium &	500-600 lbs	109.25-118.50	Medium &	500-600 lbs 94.75-103.25
Large #1	600-700 lbs	100.00-110.75	Large #1	600-700 lbs 90.25-95.00
	700-800 lbs	96.50-98.75		700-800 lbs 91.50-93.00
	800-900 lbs	pkg 95.00		800-900 lbs

<a href="http://www.ams.usda.gov/mnreports/gl_ls761.txt">http://www.ams.usda.gov/mnreports/gl_ls761.txt</a>			6,155 hd	Tuesday
<b>CENTENNIAL LIVESTOCK AUCTION</b> Ft. Collins, CO				
Feeder Steers	400-500 lbs	114.50-131.00	Feeder Heifers	400-500 lbs 101.00-113.00
Medium &	500-600 lbs	104.00-117.00	Medium &	500-600 lbs 97.10-106.00
Large #1	600-700 lbs	96.50-107.50	Large #1	600-700 lbs 87.00-94.80
	700-800 lbs	94.50-98.20		700-800 lbs 89.00-90.50
	800-900 lbs	92.00-97.00		800-900 lbs 85.80-86.25

**CHICAGO MERCANTILE EXCHANGE LIVESTOCK FUTURES SETTLEMENT**

<b>Live Cattle</b>		<b>Change</b>	<b>Feeder Cattle</b>		<b>Change</b>
Feb	83.35	(0.72)	Jan	95.70	(0.65)
Apr	86.82	(0.75)	Mar	94.62	(0.27)
Jun	85.70	(0.30)	Apr	96.22	(0.22)

**CHICAGO BOARD OF TRADE GRAIN FUTURES SETTLEMENT**

<b>Corn</b>		<b>Change</b>	<b>Soybeans</b>		<b>Change</b>
Mar	3.66 1/2	4	Jan	9.78	8 1/2
May	3.77 1/2	4 1/4	Mar	9.71 1/2	unch
Jul	3.87 3/4	4 1/4	May	9.80 1/4	(1/2)
<b>Wheat</b>		<b>Change</b>			
Mar	6.00	3			
May	6.11 1/4	3			
Jul	6.21 1/1	3			

**5 AREA WKLY ACCUMULATED WTD AVG SLAUGHTER CATTLE PRICE**

	<b>Head Count</b>	<b>Avg Weight</b>	<b>Avg Price</b>
Live Steer	604	1,398	85.14
Live Heifer	254	1,325	82.50
Dressed Steer	1,437	870	137.15
Dressed Heifer	80	781	136.00

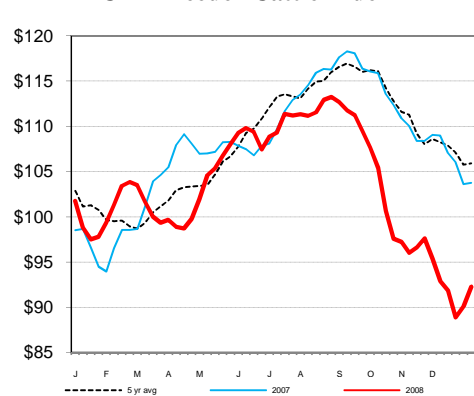
**DAILY ESTIMATED BOXED BEEF CUTOUT VALUES**

<b>Choice</b>	<b>Select</b>	<b>Choice Cuts</b>	146	Loads
<b>600-900#</b>	<b>600-900#</b>	<b>Select Cuts</b>	123	Loads
149.90	142.81	<b>Trimming</b>	18	Loads
0.64	0.88	<b>Grinds</b>	88	Loads

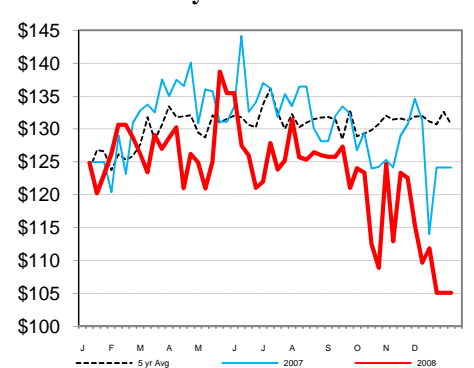
<a href="http://www.ams.usda.gov/mnreports/sj_ls710.txt">http://www.ams.usda.gov/mnreports/sj_ls710.txt</a>	
<b>ESTD DAILY CATTLE SLAUGHTER</b>	
Wed (est)	112,000
Week Ago (est)	107,000
Year Ago (act)	122,000
Wk to date (est)	357,000
Last Week (est)	352,000
Last Year (act)	378,000
Previous Day Estimated:	Steer and Heifer 100,000 Cow and Bull 26,000

<a href="http://www.ams.usda.gov/mnreports/ko_ls151.txt">http://www.ams.usda.gov/mnreports/ko_ls151.txt</a>		
<b>SLAUGHTER COW MARKET</b>		
<b>Oklahoma National Stockyards</b>		
Tuesday	<b>Pct Lean</b>	<b>Price</b>
	<b>Breaking</b>	75-80 40.75-44.25
	<b>Boning</b>	80-85 42.00-45.50
	<b>Lean</b>	85-90 40.00-43.50
<b>Tuesday</b>		

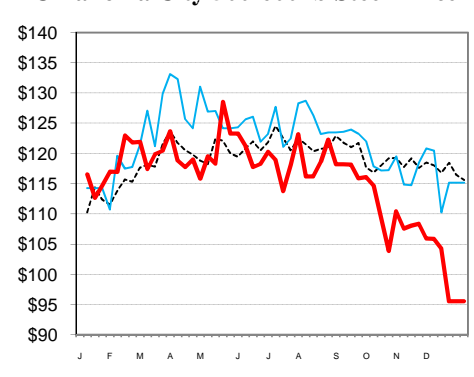
**CME Feeder Cattle Index**



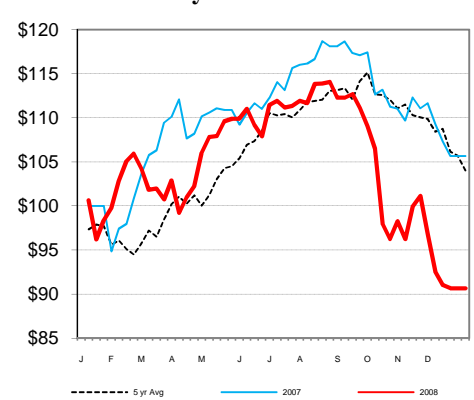
**Oklahoma City 400-500 lb Steer Price**



**Oklahoma City 500-600 lb Steer Price**



**Oklahoma City 700-800 lb Steer Price**



**USDA Livestock & Grain Market News**

St. Joseph, Missouri  
 Phone: 816-238-0678  
 Email: stjoe.Lgmn@usda.gov