

AUCTION SUMMARY

http://www.ams.usda.gov/mnreports/ko_ls751.txt			9,055 hd	Wednesday
OKC WEST - EL RENO CATTLE AUCTION				
			El Reno, OK	
Feeder Steers	400-500 lbs	110.50-124.00	Feeder Heifers	400-500 lbs 89.00-101.00
Medium &	500-600 lbs	96.00-113.50	Medium &	500-600 lbs 89.00-96.00
Large #1	600-700 lbs	94.00-101.00	Large #1	600-700 lbs 87.00-94.50
	700-800 lbs	94.00-99.00		700-800 lbs 86.50-92.00
	800-900 lbs	89.50-96.50		800-900 lbs 86.00-88.00

http://www.ams.usda.gov/mnreports/dc_ls750.txt			5,974 hd	Wednesday
WINTER LIVESTOCK CATTLE AUCTION				
			Dodge City, KS	
Feeder Steers	400-500 lbs	117.00-120.00	Feeder Heifers	400-500 lbs 95.50-104.00
Medium &	500-600 lbs	102.50-113.00	Medium &	500-600 lbs 92.50-96.00
Large #1	600-700 lbs	98.75-103.00	Large #1	600-700 lbs 91.50-94.10
	700-800 lbs	95.65-98.00		700-800 lbs 87.00-93.25
	800-900 lbs	92.50-96.00		800-900 lbs 85.00-88.75

http://www.ams.usda.gov/mnreports/wh_ls750.txt			4,750 hd	Wednesday
HUSS PLATTE VALLEY AUCTION				
			Kearney, NE	
Feeder Steers	400-500 lbs	116.50-125.00	Feeder Heifers	400-500 lbs 106.50-116.00
Medium &	500-600 lbs	107.00-122.50	Medium &	500-600 lbs 93.25-106.50
Large #1	600-700 lbs	95.00-108.50	Large #1	600-700 lbs 90.00-97.00
	700-800 lbs	90.25-99.10		700-800 lbs 89.50-95.35
	800-900 lbs	92.25-99.00		800-900 lbs 90.25-91.00

Live Cattle Settlements		Feeder Cattle Settlements		Wednesday
CHICAGO MERCANTILE EXCHANGE LIVESTOCK FUTURES SETTLEMENT				
Live Cattle	Change	Feeder Cattle	Change	
Feb	83.35 (0.72)	Jan	95.70 (0.65)	
Apr	86.82 (0.75)	Mar	94.62 (0.27)	
Jun	85.70 (0.30)	Apr	96.22 (0.22)	

Corn Settlements		Soybean Settlements		Wednesday
CHICAGO BOARD OF TRADE GRAIN FUTURES SETTLEMENT				
Corn	Change	Soybeans	Change	
Mar	3.66 1/2 4	Jan	9.78 8 1/2	
May	3.77 1/2 4 1/4	Mar	9.71 1/2 unch	
Jul	3.87 3/4 4 1/4	May	9.80 1/4 (1/2)	

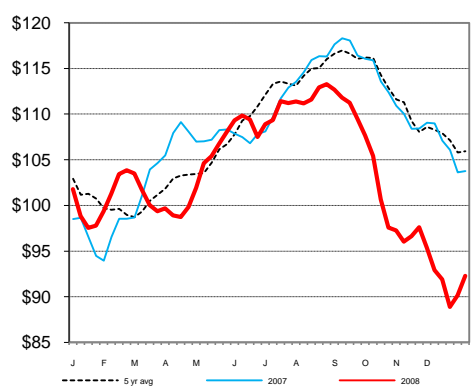
http://www.ams.usda.gov/mnreports/sj_gr710.txt			Wheat	Change
KANSAS CITY BOARD OF TRADE			Mar	6.00 3
WHEAT FUTURES SETTLEMENT			May	6.11 1/4 3
			Jul	6.21 1/1 3

http://www.ams.usda.gov/mnreports/lm_ct100.txt				Wednesday
5 AREA WKLY ACCUMULATED WTD AVG SLAUGHTER CATTLE PRICE				
	Head Count	Avg Weight	Avg Price	
Live Steer	604	1,398	85.14	
Live Heifer	254	1,325	82.50	
Dressed Steer	1,437	870	137.15	
Dressed Heifer	80	781	136.00	

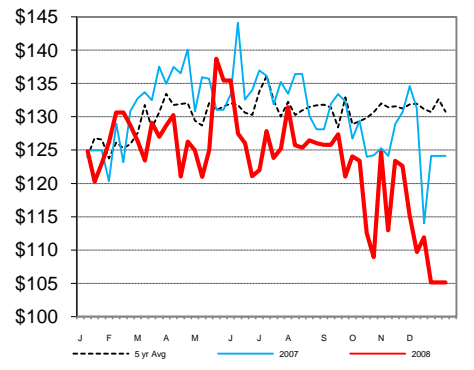
http://www.ams.usda.gov/mnreports/lm_xb403.txt					Wednesday
DAILY ESTIMATED BOXED BEEF CUTOUT VALUES					
Choice	Select	Choice Cuts	146	Loads	
600-900#	600-900#	Select Cuts	123	Loads	
149.90	142.81	Trimming	18	Loads	
0.64	0.88	Grinds	88	Loads	

http://www.ams.usda.gov/mnreports/sj_ls710.txt		http://www.ams.usda.gov/mnreports/jc_ls174.txt	
ESTD DAILY CATTLE SLAUGHTER			
Wed (est)	112,000	Joplin, MO Regional Stockyards	
Week Ago (est)	107,000	Wednesday	Pct Lean Price
Year Ago (act)	122,000	Breaking	75-80 39.00-43.00
Wk to date (est)	357,000	Boning	80-85 38.00-42.00
Last Week (est)	352,000	Lean	85-90 31.00-36.00
Last Year (act)	378,000	Tuesday	
Previous Day Estimated:	Steer and Heifer	100,000	
	Cow and Bull	26,000	

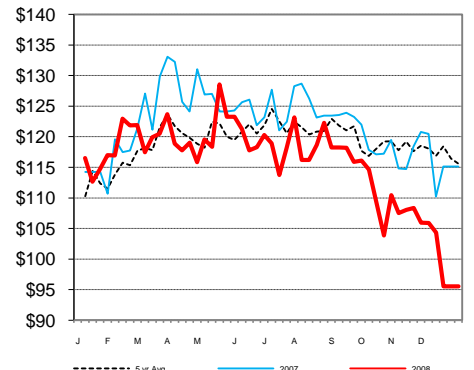
CME Feeder Cattle Index



Oklahoma City 400-500 lb Steer Price



Oklahoma City 500-600 lb Steer Price



Oklahoma City 700-800 lb Steer Price

