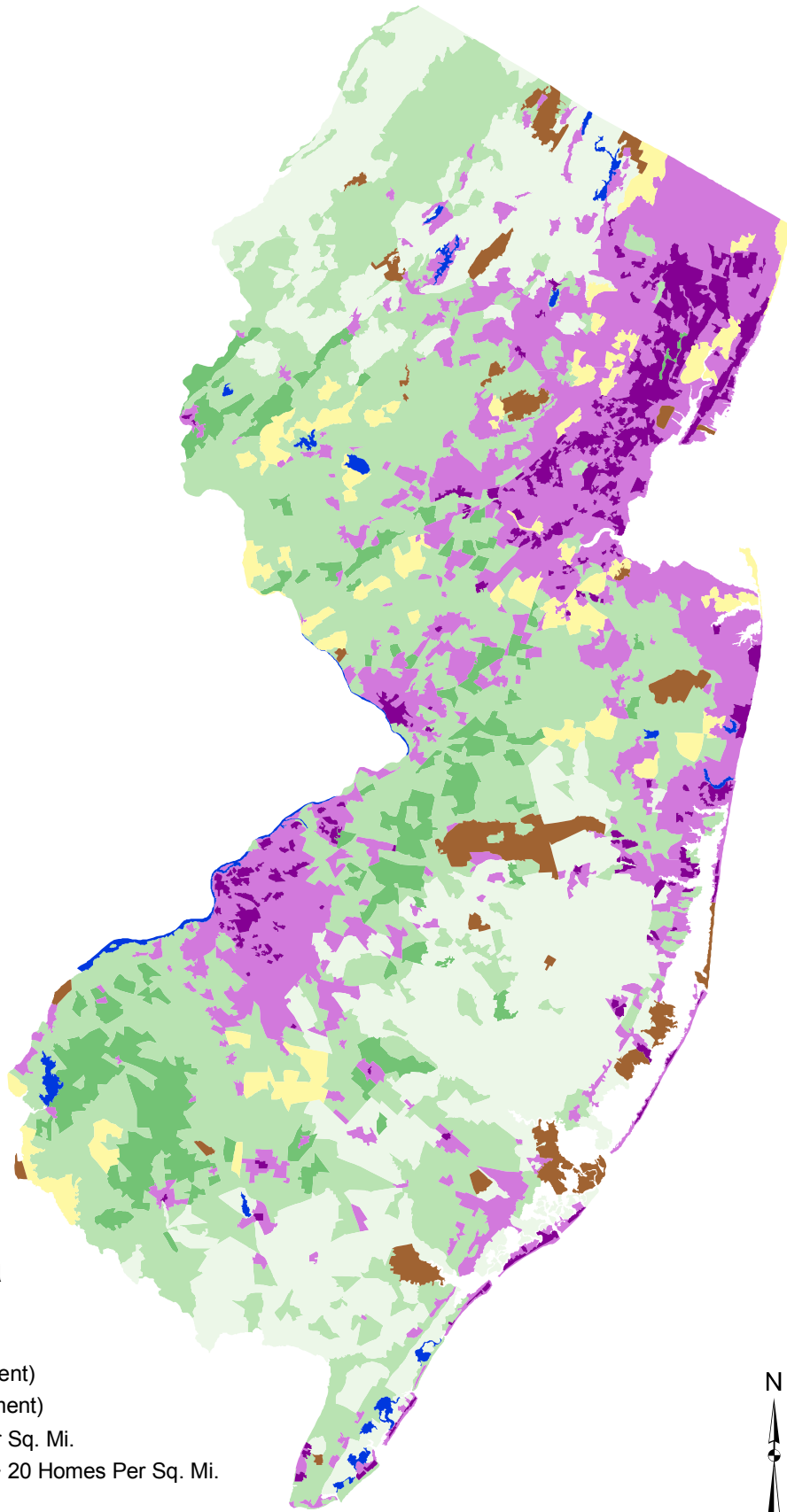


Stratification of New Jersey 1997



Land Use Strata

- > 50% Cultivated
- 15 - 50% Cultivated
- < 15% Cultivated (Lg Segment)
- < 15% Cultivated (Sm Segment)
- Agri-Urban > 20 Homes Per Sq. Mi.
- Commercial/Dense Urban > 20 Homes Per Sq. Mi.
- Non-Agriculture
- Water

