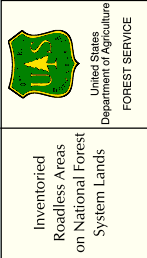
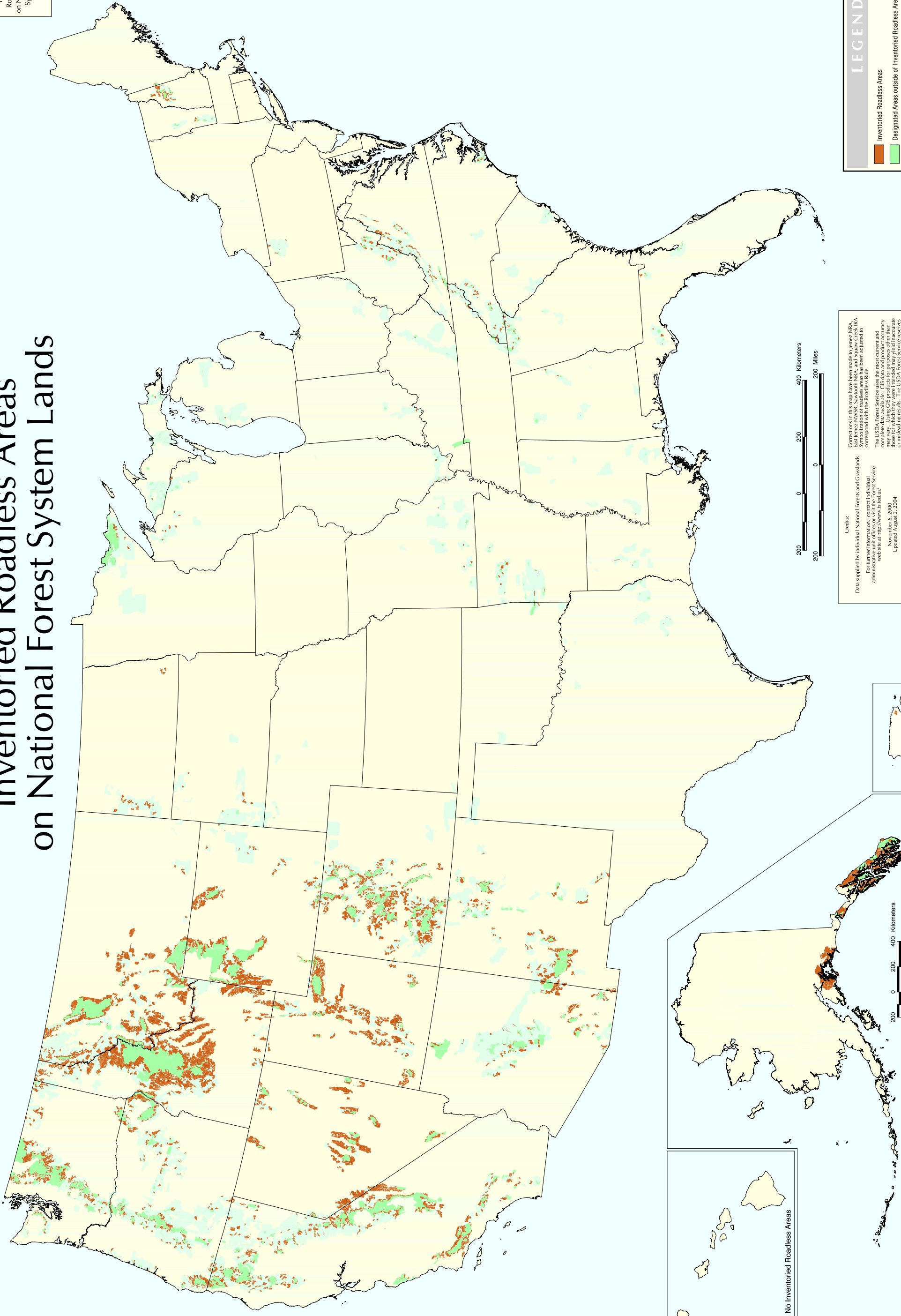


Inventoried Roadless Areas on National Forest System Lands



Inventoried
Roadless Areas
on National Forest
System Lands



Credits:
Data supplied by individual National Forests and Grasslands
For further information, contact the local
administration office or visit the Forest Service
web site at <http://www.fs.fed.us/>
November 6, 2000
Updated August 2, 2004
Albers Projection

Corrections: In this map have been made to Jemez NRA,
East Jemez NWSR, Sawtooth NRA, and Squaw Creek IRA.
Symbolization of roadless areas has been adjusted to
correspond with the Roadless Rule.
The USDA Forest Service uses the most current and
available data for the preparation of this map. Accuracy
may vary. Using GIS products for purposes other than
those for which they were intended may yield inaccurate
results. The Forest Service reserves the right to correct,
update, modify, or replace GIS products without notification.



LEGEND

- Inventoried Roadless Areas
- Designated Areas outside of Inventoried Roadless Areas
- National Forest System land outside of Inventoried Roadless Areas - not all private land is shown on the map

Hawaii No Inventoried Roadless Areas

Alaska

Puerto Rico