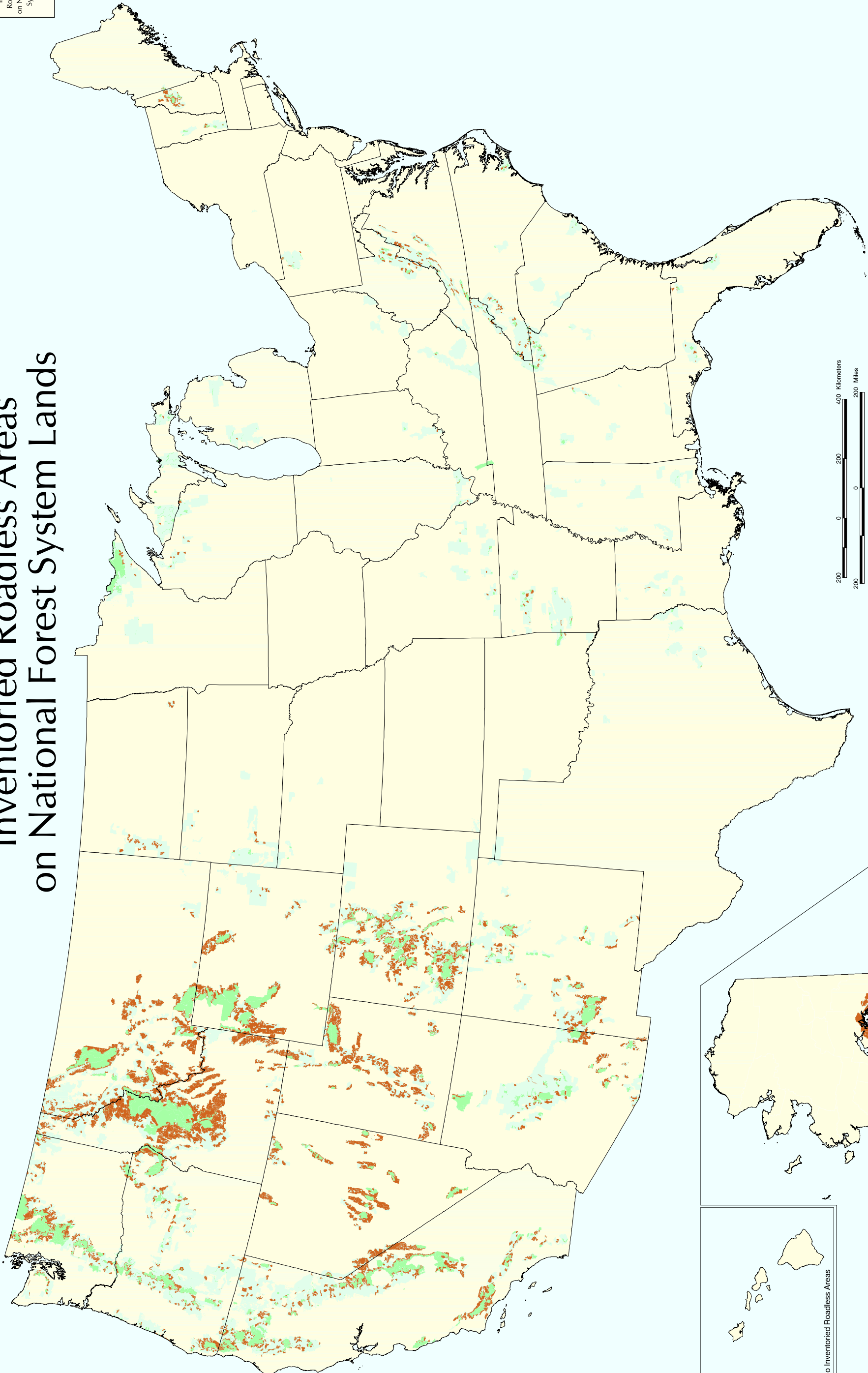


Inventoried Roadless Areas on National Forest System Lands

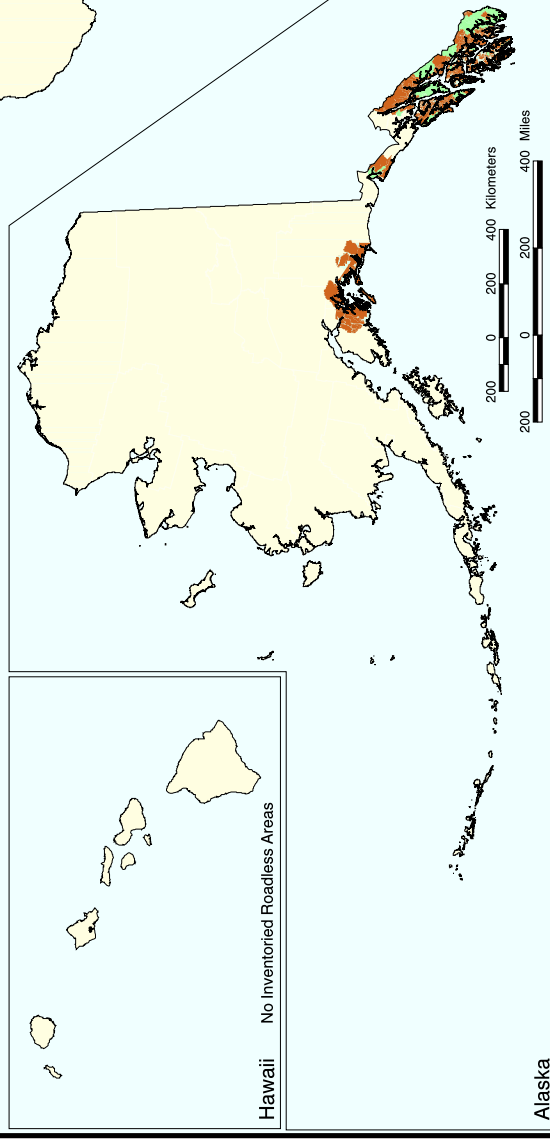


LEGEND

- Inventoried Roadless Areas
- Designated Areas outside of Inventoried Roadless Areas
- National Forest System land outside of Inventoried Roadless Areas - not all private land is shown on the map

Credits:
Data supplied by individual National Forests and Grasslands for further information, contact the individual administrative web site at <http://www.fs.fed.us/>
November 6, 2000
Updated August 2, 2004
Albers Projection

Corrections in this map have been made to Jemez NRA, East Jemez NWR, Sawtooth NRA, and Squaw Creek IRA. Symbolization of roadless areas has been adjusted to correspond with the Roadless Rule.
The USDA Forest Service uses the most current and accurate data available. The accuracy of the data and the agency products for which they were intended may vary. Using GIS products for purposes other than those for which they were intended may yield inaccurate results. The user assumes the responsibility for verifying the right to correct, update, modify, or replace GIS products without notification.



Hawaii No Inventoried Roadless Areas

Alaska