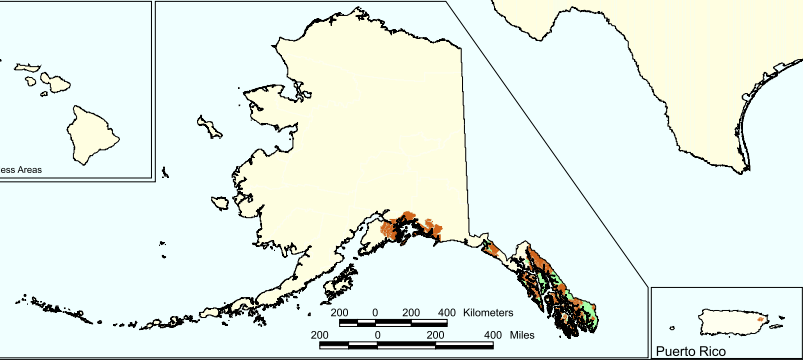
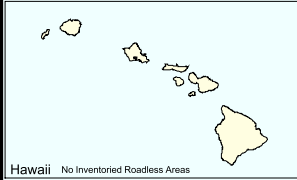
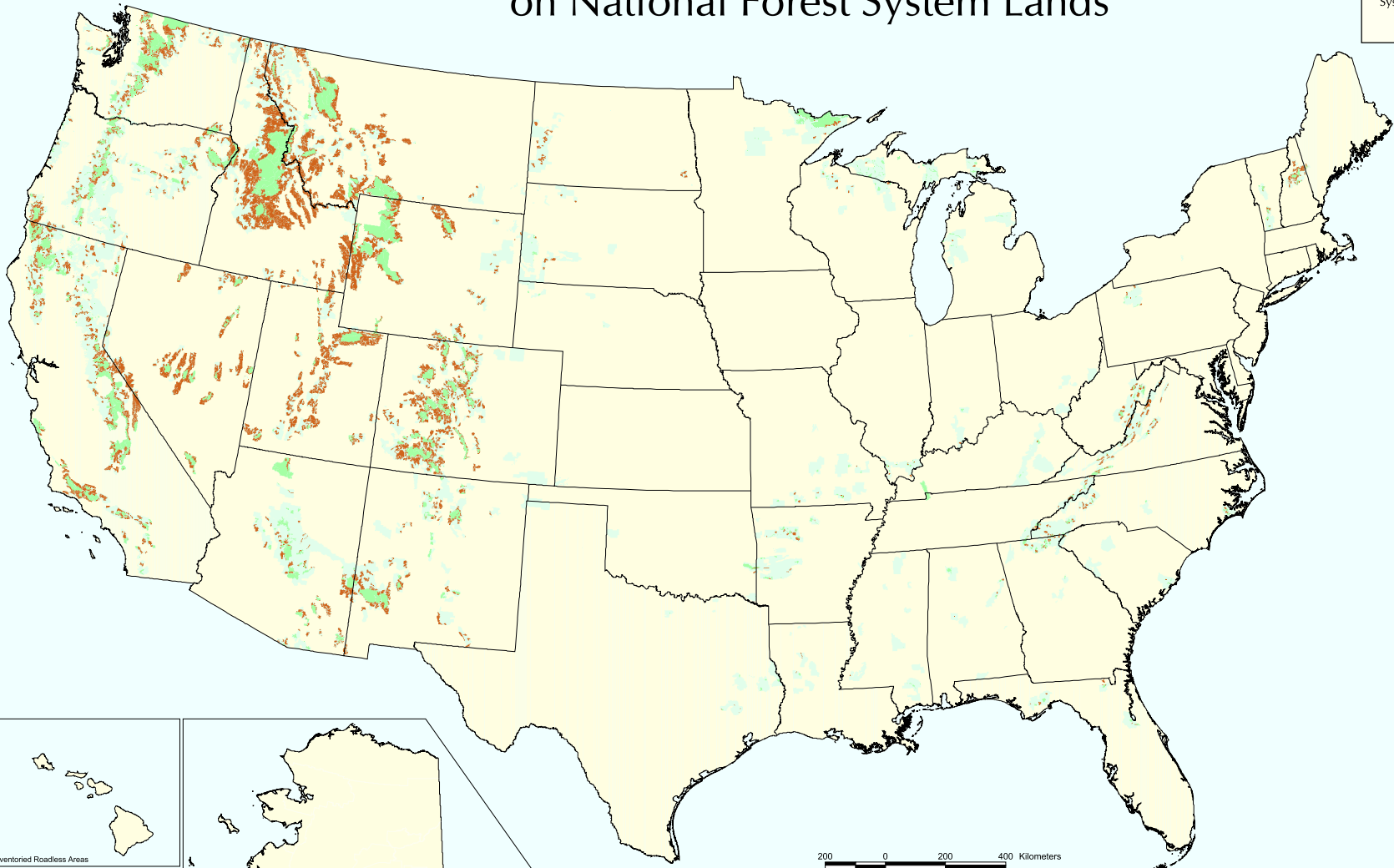


Inventoried Roadless Areas on National Forest System Lands

Inventoried
Roadless Areas
on National Forest
System Lands



United States
Department of Agriculture
FOREST SERVICE



Credits:
Data supplied by individual National Forests and Grasslands

For further information, contact individual administrative unit offices or visit the Forest Service web site at <http://www.fs.fed.us/>

Created: November 6, 2000
Corrected: June 27, 2003
Albers Projection

Changes to this map represent a correction of the roadless categorization of some NRA and East Jensen NADRE in New Mexico.

The USDA Forest Service uses the most current and complete data available. GIS data and product accuracy may vary. Using GIS products for purposes other than those for which they were intended may yield inaccurate or misleading results. The USDA Forest Service reserves the right to correct, update, modify, or replace GIS products without notification.

LEGEND

- Inventoried Roadless Areas
- Designated Areas outside of Inventoried Roadless Areas
- National Forest System land outside of Inventoried Roadless Areas - not all private land is shown on the map