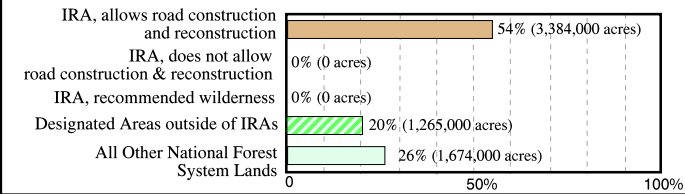


Nevada

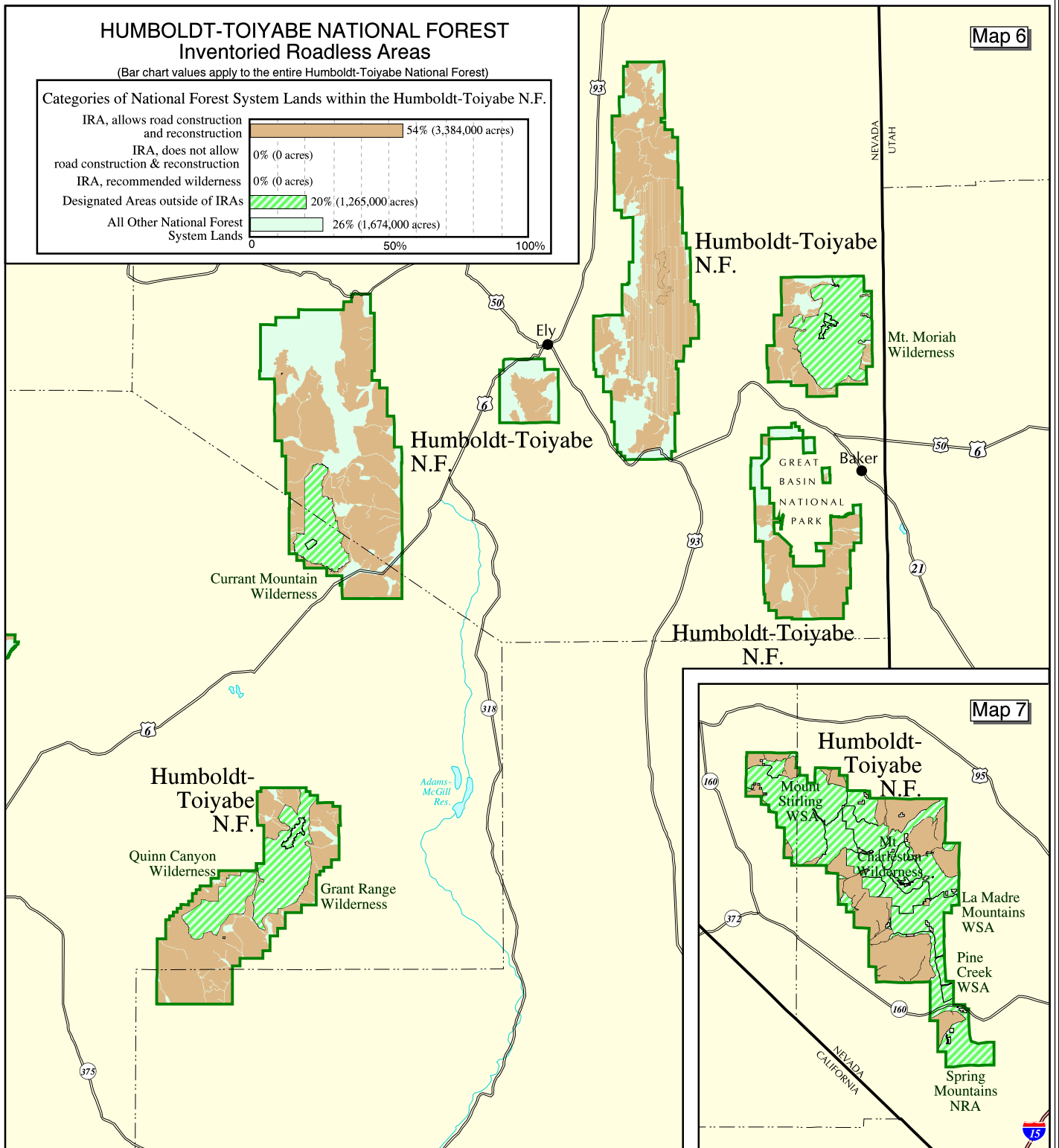
HUMBOLDT-TOIYABE NATIONAL FOREST Inventoried Roadless Areas

(Bar chart values apply to the entire Humboldt-Toiyabe National Forest)

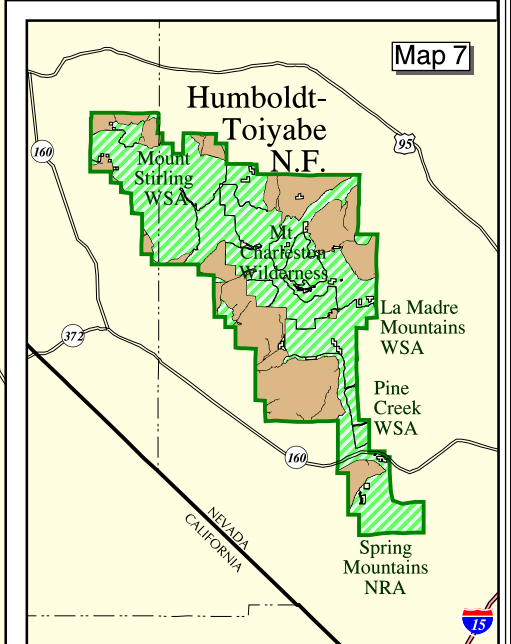
Categories of National Forest System Lands within the Humboldt-Toiyabe N.F.



Map 6



Map 7



HUMBOLDT-TOIYABE NATIONAL FOREST Inventoried Roadless Areas

The USDA Forest Service uses the most current and complete data available. GIS data and product accuracy may vary. Using GIS products for purposes other than those for which they were intended may yield inaccurate or misleading results. The USDA Forest Service reserves the right to correct, update, modify, or replace GIS products without notification.



September 15, 2000
Data Supplied by Humboldt-Toiyabe National Forest
Contact: Humboldt-Toiyabe N.F.
1200 Franklin Way
Sparks, NV 89431
(775) 331-6444

- Inventoried Roadless Area where road construction or reconstruction is allowed
- Inventoried Roadless Area where road construction or reconstruction is not allowed
- Inventoried Roadless Area where road construction or reconstruction is not allowed, and the forest plan recommends as wilderness
- Designated Areas outside of Inventoried Roadless Areas
- National Forest System lands outside of Inventoried Roadless Areas - not all private land is shown on the map

- Interstate Highway
- Other Highways
- County boundaries



Humboldt-Toiyabe National Forest (Maps 6 and 7)